

DISTRICT IV
1220 S. St. Francis Dr., Santa Fe, NM 87505
Phone (505) 476-3480 Fax: (505) 476-3488

1220 South St. Francis Dr.
Santa Fe, New Mexico 87501

MAR 06 2013

Dr. R. MOCD ARTESIA

Submit one copy to appropriate
District Office

☒ AMENDED REPORT

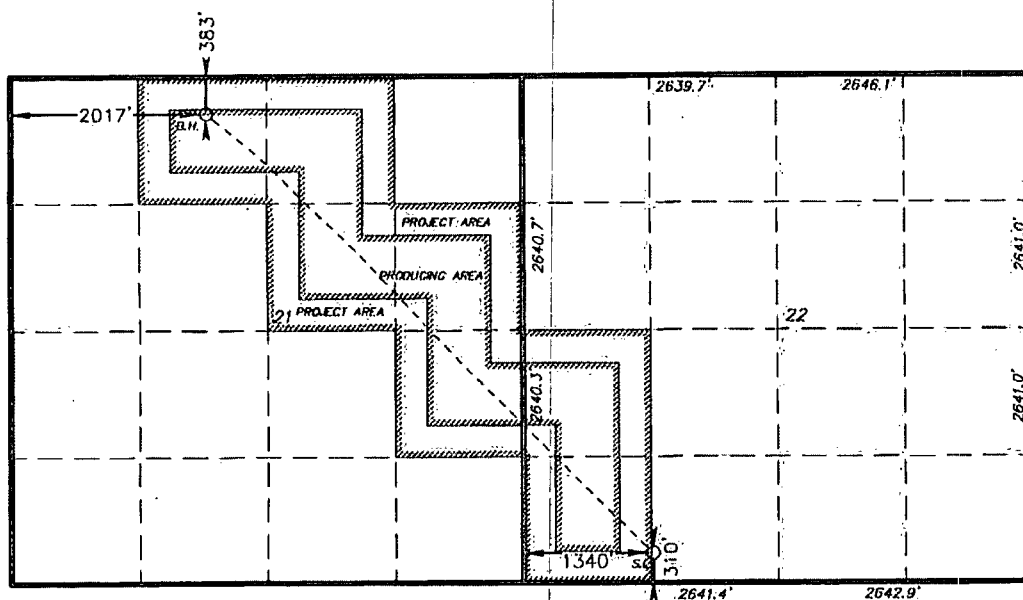
API Number 30-015-40802		Pool Code 96047	Pool Name PLU S (DELAWARE)	
Property Code 306402		Property Name POKER LAKE UNIT		Well Number 400H
GRID No. 260737		Operator Name BOPCO, L.P.		Elevation 3517'

UL or lot No.	Section	Township	Range	Lot Idn	Feet from the	North/South line	Feet from the	East/West line	County
N	22	24 S	31 E		310	SOUTH	1340	WEST	EDDY

UL or lot No.	Section	Township	Range	Lot Idn	Feet from the	North/South line	Feet from the	East/West line	County
C	21	24 S	31 E		383	NORTH	2017	WEST	EDDY

Dedicated Acres	Joint or Infill	Consolidation Code	Order No.
280			

NO ALLOWABLE WILL BE ASSIGNED TO THIS COMPLETION UNTIL ALL INTERESTS HAVE BEEN CONSOLIDATED
OR A NON-STANDARD UNIT HAS BEEN APPROVED BY THE DIVISION



Lat - N 32°12'32.06"
Long - W 103°47'03.49"
NMSPCE- N 440153.2
E 669810.3
(NAD-27)

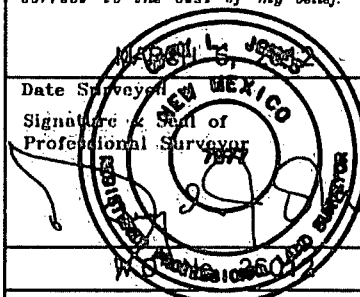
Lat - N 32°11'46.70"
Long - W 103°46'09.88"
NMSPEC- N 435593.486
E 674440.342
(NAD-27)

I hereby certify that the information contained herein is true and complete to the best of my knowledge and belief, and that this organization either owns a working interest or unleased mineral interest in the land including the proposed bottom hole location or has a right to drill this well at this location pursuant to a contract with an owner of such a mineral or working interest, or to a voluntary pooling agreement or a compulsory pooling order heretofore entered by the division.

Signature Christopher Volok Date 1-24-13

Christopher Volek
Printed Name
 cvolek@basspet.com
Email Address

I hereby certify that the well location shown on this plat was plotted from field notes of actual surveys made by me or under my supervision, and that the same is true and correct to the best of my belief.



Certificate No. Gary L. Jones 7977

BASIN SURVEYS 26012