

DISTRICT I  
1625 N. French Dr., Hobbs, NM 88240  
DISTRICT II  
1301 W. Grand Avenue, Artesia, NM 88210  
DISTRICT III  
1000 Rio Brazos Rd., Aztec, NM 87410  
DISTRICT IV  
1220 S. St. Francis Dr., Santa Fe, NM 87505

State of New Mexico  
Energy, Minerals and Natural Resources Department

RECEIVED

Form C-102  
Revised July 16, 2010  
Submit one copy to appropriate  
District Office

OIL CONSERVATION DIVISION

1220 South St. Francis Dr.  
Santa Fe, New Mexico 87505

APR 11 2013  
WOOD ARTESIA

WELL LOCATION AND ACREAGE DEDICATION PLAT

☐ AMENDED REPORT

API Number 30-015-4093A	Pool Code 54600	Pool Name Santo Nino Bone Spring
Property Code 3847A	Property Name BRADLEY "30" FEDERAL COM	Well Number 4H
OGRID No. 14744	Operator Name MEWBOURNE OIL COMPANY	Elevation 3449'

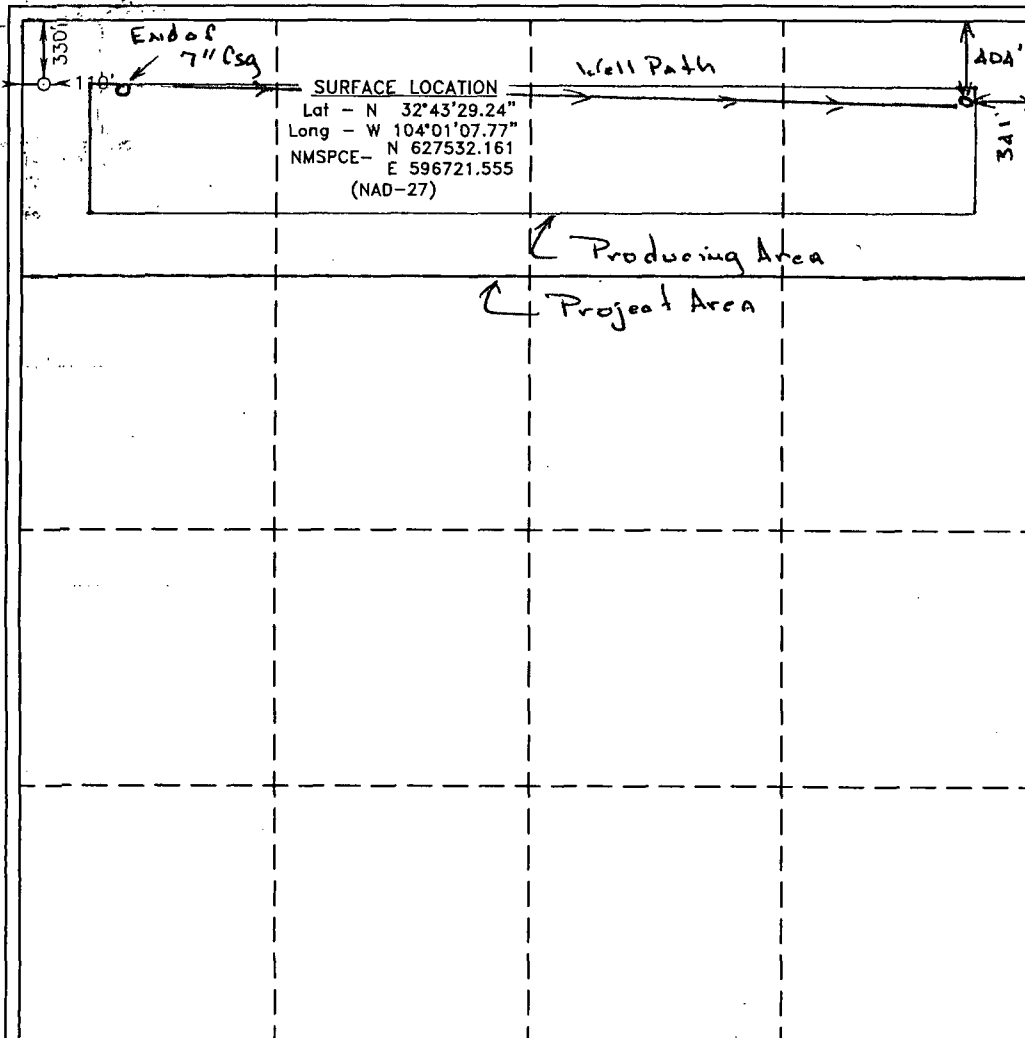
Surface Location

UL or lot No. D	Section 30	Township 18 S	Range 30 E	Lot Idn	Feet from the 330	North/South line NORTH	Feet from the 110	East/West line WEST	County EDDY
--------------------	---------------	------------------	---------------	---------	----------------------	---------------------------	----------------------	------------------------	----------------

Bottom Hole Location If Different From Surface

UL or lot No. A	Section 30	Township 18 S	Range 30 E	Lot Idn	Feet from the 40A	North/South line North	Feet from the 341	East/West line East	County Eddy
Dedicated Acres 160	Joint or Infill	Consolidation Code	Order No.						

NO ALLOWABLE WILL BE ASSIGNED TO THIS COMPLETION UNTIL ALL INTERESTS HAVE BEEN CONSOLIDATED  
OR A NON-STANDARD UNIT HAS BEEN APPROVED BY THE DIVISION



OPERATOR CERTIFICATION

I hereby certify that the information contained herein is true and complete to the best of my knowledge and belief, and that this organization either owns a working interest or unleased mineral interest in the land including the proposed bottom hole location or has a right to drill this well at this location pursuant to a contract with an owner of such a mineral or working interest, or to a voluntary pooling agreement or a compulsory pooling order heretofore entered by the division.

Signature: H.M. Young Date: 3/16/13  
Printed Name: H.M. Young  
Email Address: \_\_\_\_\_

SURVEYOR CERTIFICATION

I hereby certify that the well location shown on this plat was plotted from field notes of actual surveys made by me or under my supervision, and that the same is true and correct to the best of my belief.

Date Surveyed: AUGUST 14, 2013  
Signature & Seal of Professional Surveyor: [Signature]  
Certificate No. Gary L. Jones 7977  
BASIN SURVEYS 23143