

APR 17 2013
NMOCD ARTESIA

DISTRICT I
 1825 N. French Dr., Hobbs, NM 88240
 Phone (575) 393-6161 Fax: (575) 393-0720

DISTRICT II
 811 S. First St., Artesia, NM 88210
 Phone (575) 748-1283 Fax: (575) 748-0720

DISTRICT III
 1000 Rio Brazos Rd., Aztec, NM 87410
 Phone (505) 334-6178 Fax: (505) 334-6170

DISTRICT IV
 1220 S. St. Francis Dr., Santa Fe, NM 87505
 Phone (505) 476-3460 Fax: (505) 476-3462

State of New Mexico
 Energy, Minerals and Natural Resources Department

Form C-102
 Revised August 1, 2011

Submit one copy to appropriate
 District Office

OIL CONSERVATION DIVISION
 1220 South St. Francis Dr.
 Santa Fe, New Mexico 87505

WELL LOCATION AND ACREAGE DEDICATION PLAT

☐ AMENDED REPORT

API Number 30-015-40974	Pool Code 96217	Pool Name Southwest Willow Lake; Bone Spring
Property Code 39632	Property Name MALAGA 13 CN FEDERAL COM	Well Number 1H
GRID No. 14744	Operator Name MEWBOURNE OIL COMPANY	Elevation 2893'

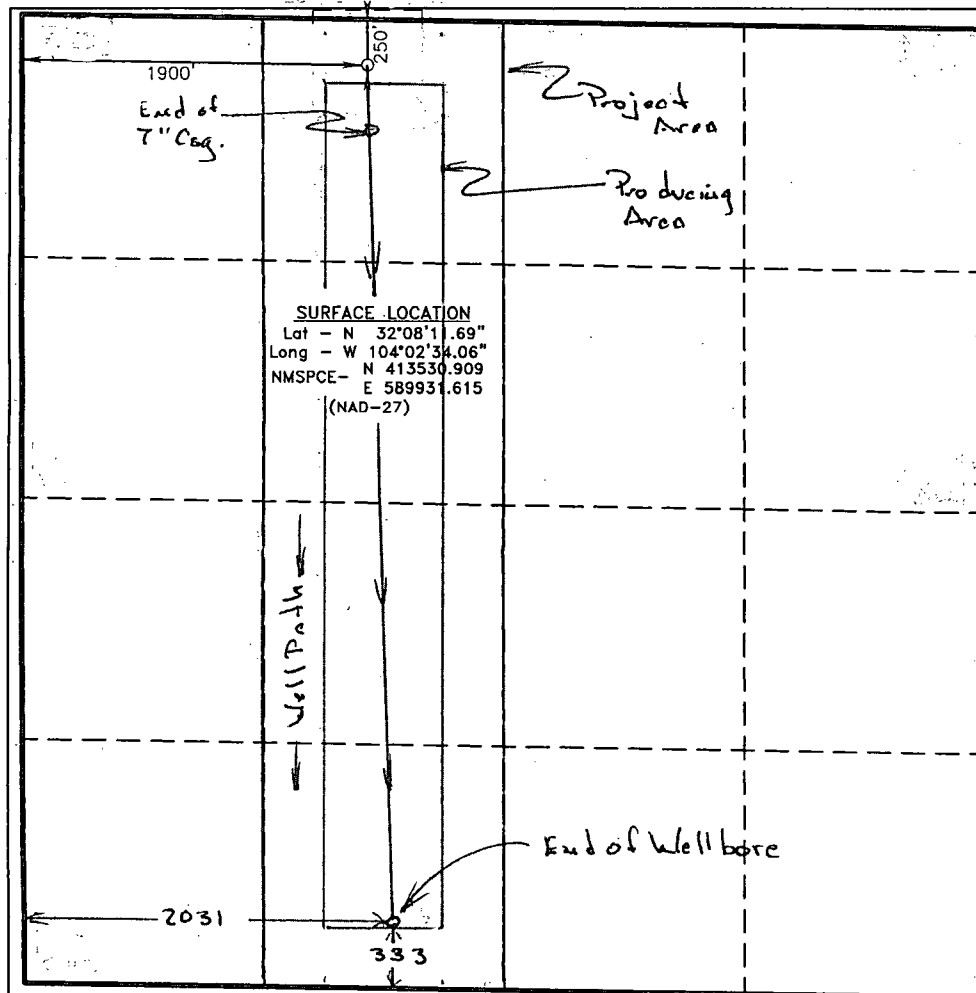
Surface Location

UL or lot No.	Section	Township	Range	Lot Idn	Feet from the	North/South line	Feet from the	East/West line	County
C	13	25 S	28 E		250	NORTH	1900	WEST	EDDY

Bottom Hole Location If Different From Surface

UL or lot No.	Section	Township	Range	Lot Idn	Feet from the	North/South line	Feet from the	East/West line	County
N	13	25 S	28 E		333	South	2031	West	Eddy
Dedicated Acres 160	Joint or Infill	Consolidation Code	Order No.						

NO ALLOWABLE WILL BE ASSIGNED TO THIS COMPLETION UNTIL ALL INTERESTS HAVE BEEN CONSOLIDATED
 OR A NON-STANDARD UNIT HAS BEEN APPROVED BY THE DIVISION



OPERATOR CERTIFICATION
 I hereby certify that the information contained herein is true and complete to the best of my knowledge and belief, and that this organization either owns a working interest or unleased mineral interest in the land including the proposed bottom hole location or has a right to drill this well at this location pursuant to a contract with an owner of such a mineral or working interest, or to a voluntary pooling agreement or a compulsory pooling order heretofore entered by the division.

Signature [Signature] Date 4/13/13
 Printed Name N.M. Jones
 Email Address _____

SURVEYOR CERTIFICATION
 I hereby certify that the well location shown on this plat was plotted from field notes of actual surveys made by me or under my supervision, and that the same is true and correct to the best of my belief.

Date Surveyed 4/13/13
 Signature & Seal of Professional Surveyor [Signature]
 Certificate No. Gary L. Jones 7977
 BASIN SURVEYS 27504