

DISTRICT I
1625 N. FRENCH DR., HOBBS, NM 88240

DISTRICT II
1201 W. GRAND AVENUE, ARTESIA, NM 88210

DISTRICT III
1000 Rio Brazos, Rd., Aztec, NM 87410

DISTRICT IV
1220 S. ST. FRANCIS DR., SANTA FE, NM 87505

State of New Mexico
Energy, Minerals and Natural Resources Department

OIL CONSERVATION DIVISION
1220 SOUTH ST. FRANCIS DR.
Santa Fe, New Mexico 87505

Form C
Revised October 12
Submit to Appropriate District
State Lease - 4
Fee Lease - 3

WELL LOCATION AND ACREAGE DEDICATION PLAT

AMENDED RE

API Number 30-015-37603	Pool Code 17970	Pool Name Dog Canyon; Wolfcamp
Property Code 38044	Property Name CARBON VALLEY 31 FEDERAL COM	
OGRID No. 15363	Operator Name MURCHISON OIL & GAS, INC.	
	Well Number 1H	Elevation 3558'

Surface Location

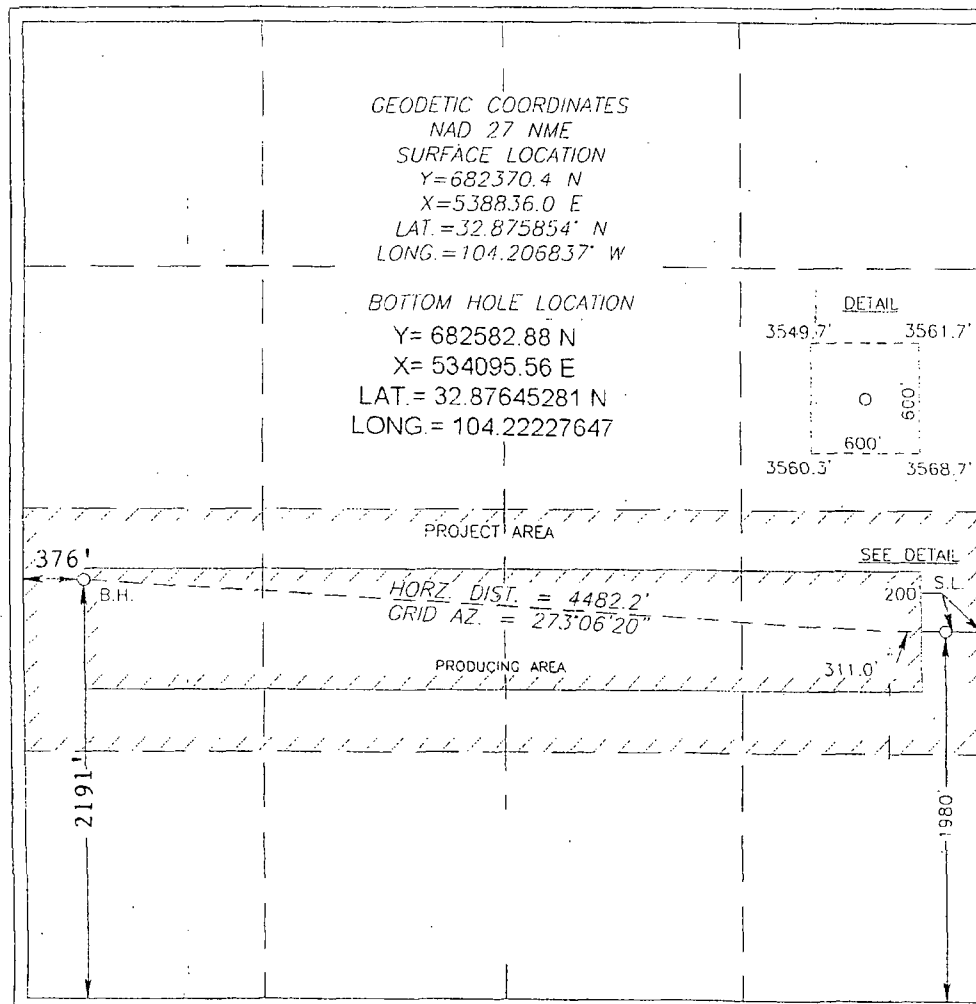
UL or lot No.	Section	Township	Range	Lot Idn	Feet from the	North/South line	Feet from the	East/West line	Co
I	31	16-S	28-E		1980	SOUTH	200	EAST	ED

Bottom Hole Location If Different From Surface

UL or lot No.	Section	Township	Range	Lot Idn	Feet from the	North/South line	Feet from the	East/West line	Co
L	31	16-S	28-E		2191	SOUTH	376	WEST	ED

Dedicated Acres	Joint or Infill	Consolidation Code	Order No.

NO ALLOWABLE WILL BE ASSIGNED TO THIS COMPLETION UNTIL ALL INTERESTS HAVE BEEN CONSOLIDATED OR A NON-STANDARD UNIT HAS BEEN APPROVED BY THE DIVISION



OPERATOR CERTIFICATION

I hereby certify that the information herein is true and complete to the best of my knowledge and belief, and that this organization either owns a working interest or unleased mineral interest in the land including the proposed bottom hole location or has a right to drill this well at this location pursuant to a contract with an owner of such mineral or working interest or to a voluntary pooling agreement or compulsory pooling order heretofore entered by the division.

A. Arnold Nall 8/13/12
Signature Date
A. Arnold Nall
Printed Name

SURVEYOR CERTIFICATION

I hereby certify that the well location shown on this plat was plotted from field notes of actual surveys made by me or under my supervision and that the same are true and correct to the best of my belief.

DECEMBER 4, 2009
Date Surveyed
Signature & Seal of Professional Surveyor
Ronald J. Eidson 06/17/12
10.13.0907

Certificate No. GARY EIDSON 1:
RONALD J. EIDSON :