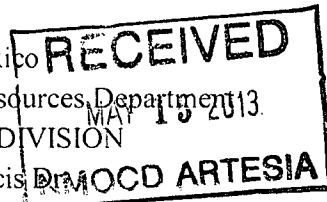


District I
1625 N. French Dr., Hobbs, NM 88240
Phone: (575) 393-6161 Fax: (575) 393-0720
District II
811 S. First St., Artesia, NM 88210
Phone: (575) 748-1283 Fax: (575) 748-0720
District III
1000 Rio Brazos Road, Aztec, NM 87410
Phone: (505) 334-6178 Fax: (505) 334-6170
District IV
1220 S. St. Francis Dr., Santa Fe, NM 87505
Phone: (505) 476-3460 Fax: (505) 476-3462

State of New Mexico
Energy, Minerals & Natural Resources Department
OIL CONSERVATION DIVISION
1220 South St. Francis
Santa Fe, NM 87505



Form C-102
Revised August 1, 2011
Submit one copy to appropriate District Office
☐ AMENDED REPORT

WELL LOCATION AND ACREAGE DEDICATION PLAT

¹ API Number 30-015-41357		² Pool Code 30216	³ Pool Name Hay Hollow North; Bone Spring
⁴ Property Code 39904	⁵ Property Name IRRITABLE 22 STATE COM		⁶ Well Number 1H
⁷ OGRID No. 6137	⁸ Operator Name DEVON ENERGY PRODUCTION COMPANY, L.P.		⁹ Elevation 3070.5

¹⁰ Surface Location

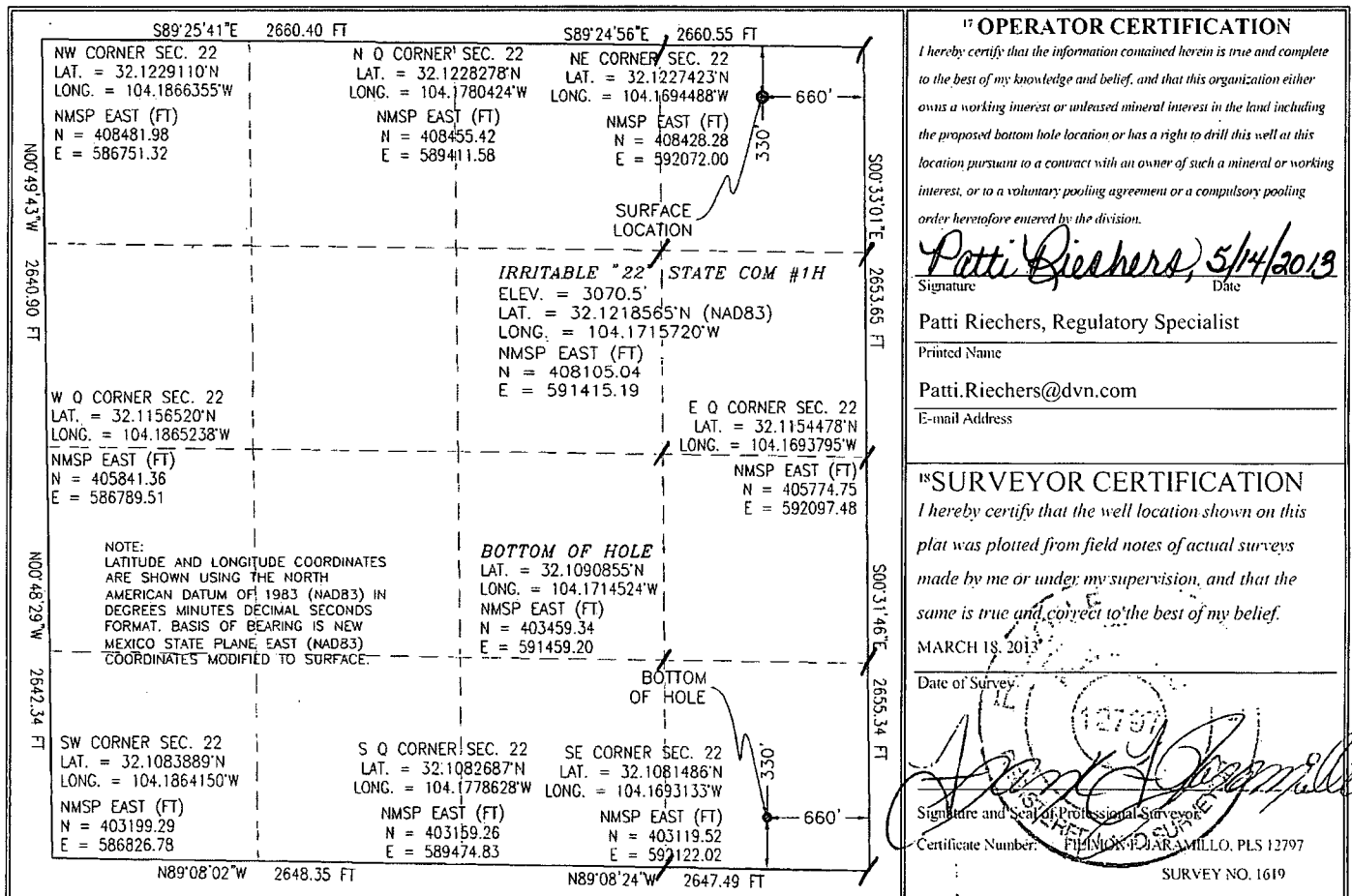
UL or lot no.	Section	Township	Range	Lot Idn	Feet from the	North/South line	Feet from the	East/West line	County
A	22	25 S	27 E		330	NORTH	660	EAST	EDDY

¹¹ Bottom Hole Location If Different From Surface

UL or lot no.	Section	Township	Range	Lot Idn	Feet from the	North/South line	Feet from the	East/West line	County
P	22	25 S	27 E		330	SOUTH	660	EAST	EDDY

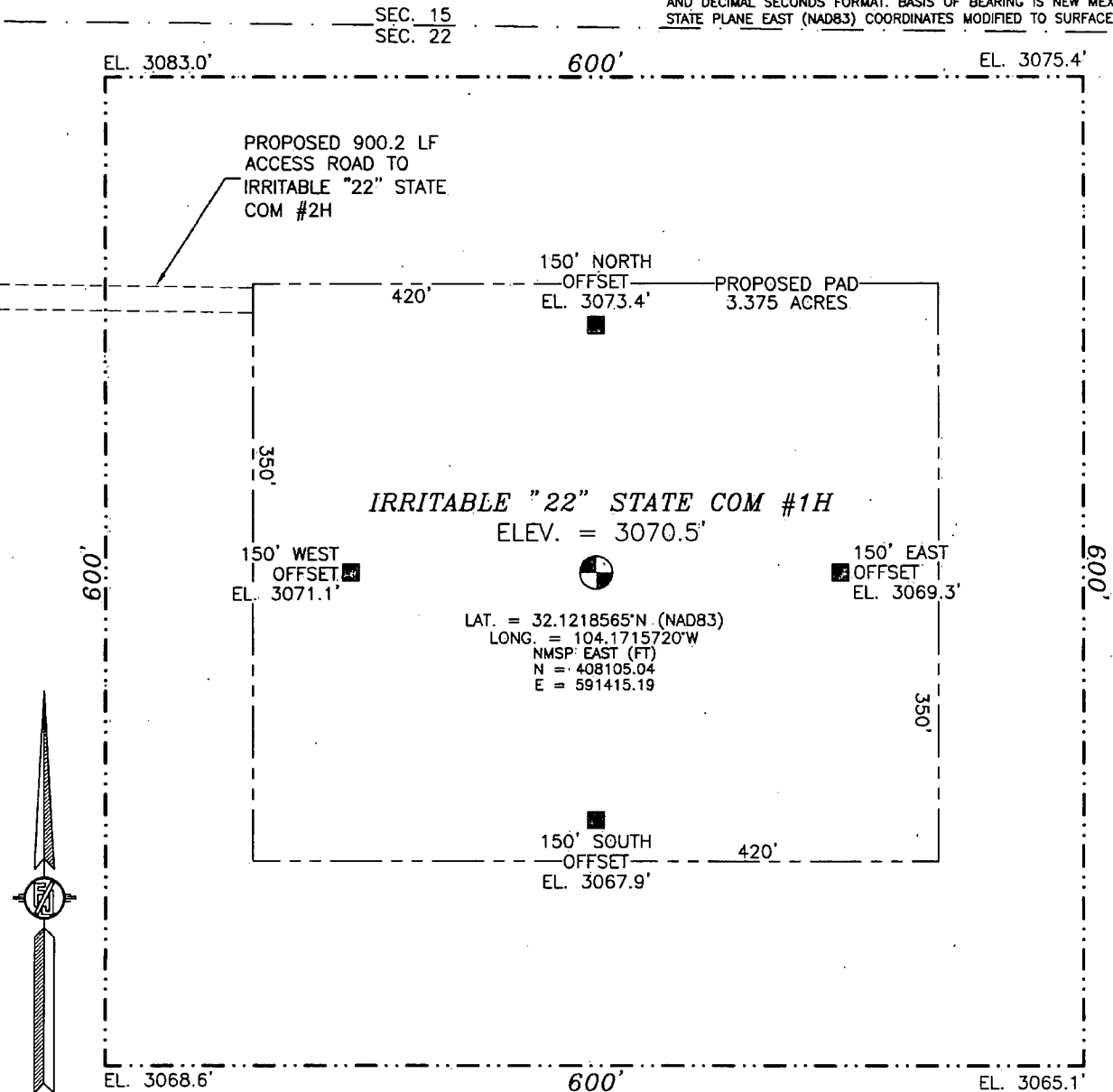
¹² Dedicated Acres 160	¹³ Joint or Infill	¹⁴ Consolidation Code	¹⁵ Order No.
---	-------------------------------	----------------------------------	-------------------------

No allowable will be assigned to this completion until all interests have been consolidated or a non-standard unit has been approved by the division.



SECTION 22, TOWNSHIP 25 SOUTH, RANGE 27 EAST, N.M.P.M.
EDDY COUNTY, STATE OF NEW MEXICO

NOTE: LATITUDE AND LONGITUDE COORDINATES ARE SHOWN USING THE NORTH AMERICAN DATUM OF 1983 (NAD83) IN DEGREES, MINUTES AND DECIMAL SECONDS FORMAT. BASIS OF BEARING IS NEW MEXICO STATE PLANE EAST (NAD83) COORDINATES MODIFIED TO SURFACE.



010 50 100 200

SCALE 1" = 100'
DIRECTIONS TO LOCATION

FROM THE INTERSECTION OF CR 720 (BLACK RIVER VILLAGE) AND CR 774 (ROADRUNNER) GO SOUTHWEST ON CR 774 FOR APPROX. 8.8 MILES. GO EAST ON CALICHE LEASE ROAD FOR APPROX. 0.1 OF A MILE (ACROSS CATTLE GUARD). FOLLOW ROAD LATHS EAST (ACROSS NORTH SIDE OF #4H, #3H, AND #2H LOCATIONS) FOR APPROX. 1.1 MILES TO NORTHWEST CORNER PAD. LOCATION IS APPROX. 267 FT. SOUTHEAST.

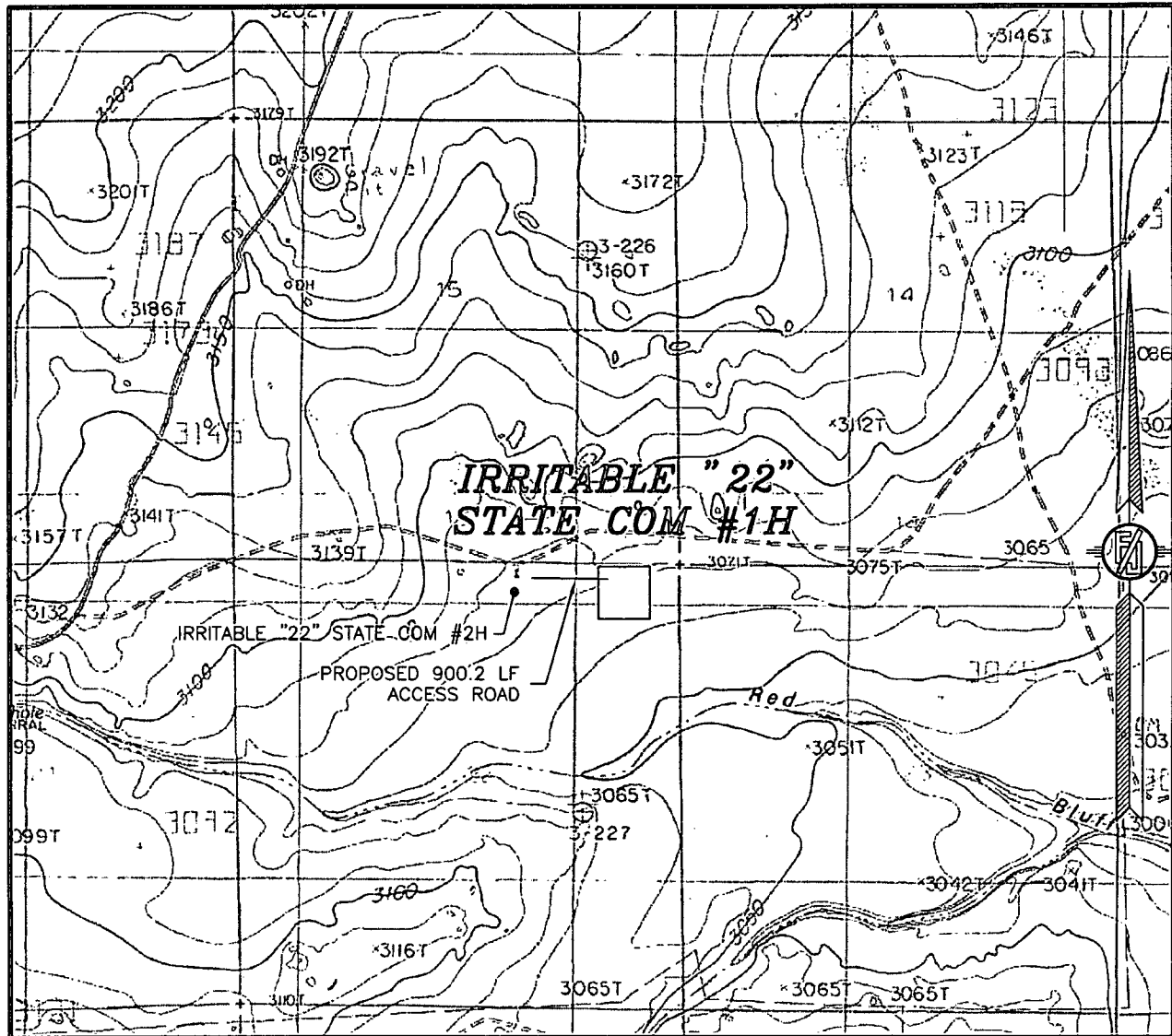
DEVON ENERGY PRODUCTION COMPANY, L.P.
IRRITABLE "22" STATE COM #1H
LOCATED 330 FT. FROM THE NORTH LINE
AND 660 FT. FROM THE EAST LINE OF
SECTION 22, TOWNSHIP 25 SOUTH,
RANGE 27 EAST, N.M.P.M.
EDDY COUNTY, STATE OF NEW MEXICO

MARCH 18, 2013

SURVEY NO. 1619

MADRON SURVEYING, INC. 301 SOUTH CANAL (575) 234-3341 CARLSBAD, NEW MEXICO

SECTION 22, TOWNSHIP 25 SOUTH, RANGE 27 EAST, N.M.P.M.
EDDY COUNTY, STATE OF NEW MEXICO
LOCATION VERIFICATION MAP



USGS QUAD MAP:
COTTONWOOD HILLS

NOT TO SCALE

DEVON ENERGY PRODUCTION COMPANY, L.P.

IRRITABLE "22" STATE COM #1H

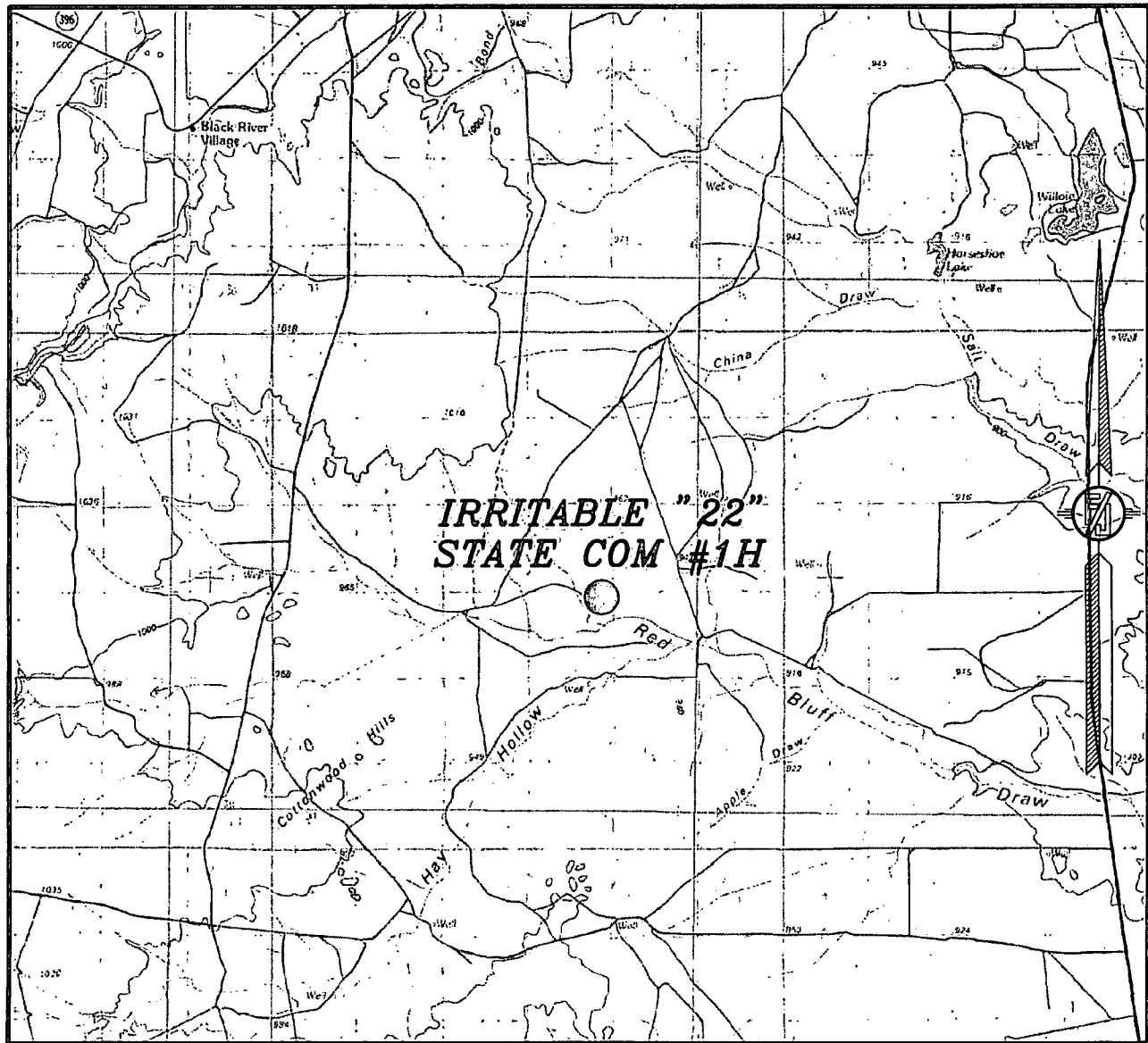
LOCATED 330 FT. FROM THE NORTH LINE
AND 660 FT. FROM THE EAST LINE OF
SECTION 22, TOWNSHIP 25 SOUTH,
RANGE 27 EAST, N.M.P.M.
EDDY COUNTY, STATE OF NEW MEXICO

MARCH 18, 2013

SURVEY NO. 1619

MADRON SURVEYING, INC. 301 SOUTH CANAL CARLSBAD, NEW MEXICO
(575) 234-3341

SECTION 22, TOWNSHIP 25 SOUTH, RANGE 27 EAST, N.M.P.M.
EDDY COUNTY, STATE OF NEW MEXICO
VICINITY MAP



NOT TO SCALE

DEVON ENERGY PRODUCTION COMPANY, L.P.

IRRITABLE "22" STATE COM #1H

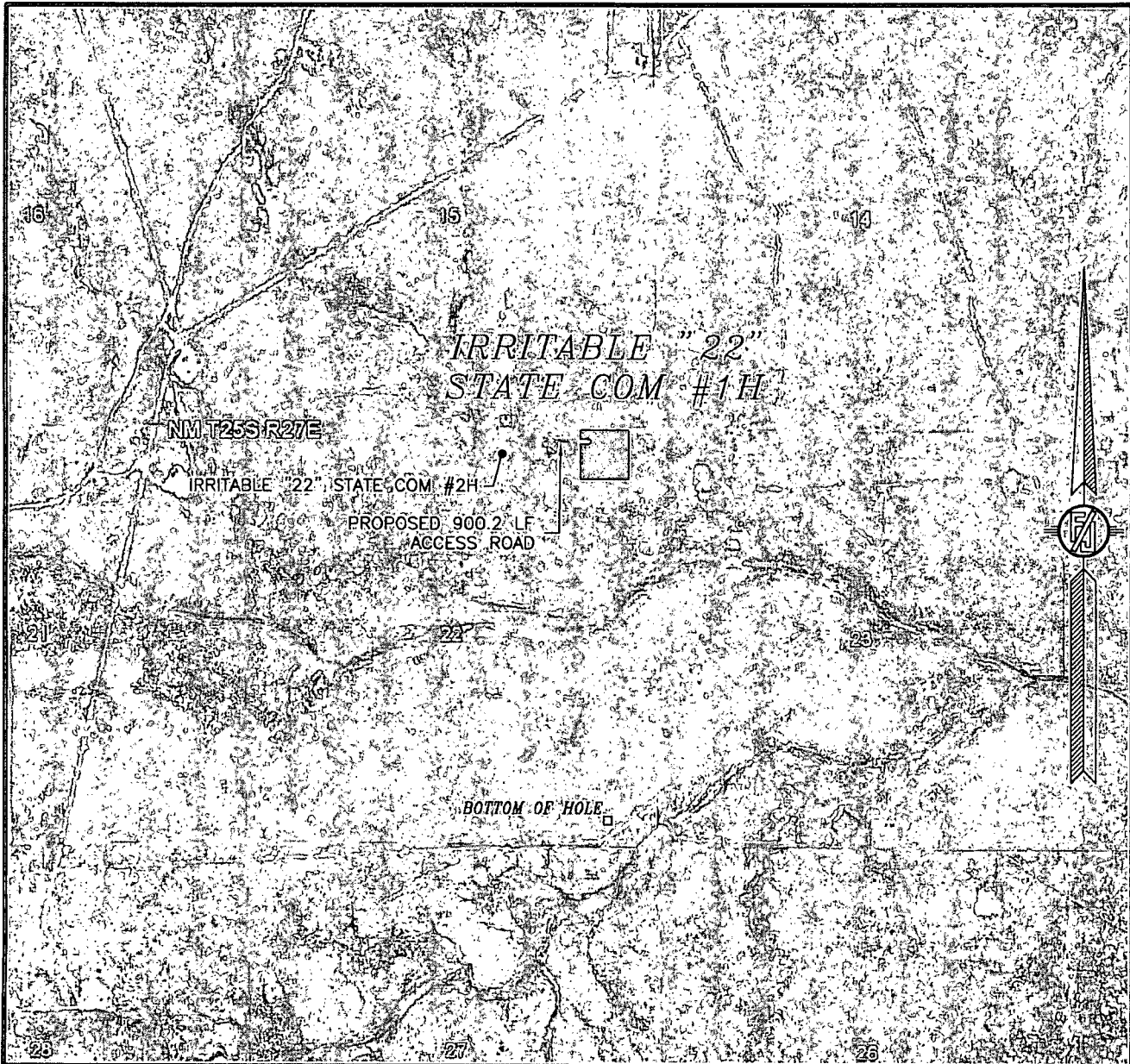
LOCATED 330 FT. FROM THE NORTH LINE
AND 660 FT. FROM THE EAST LINE OF
SECTION 22, TOWNSHIP 25 SOUTH,
RANGE 27 EAST, N.M.P.M.
EDDY COUNTY, STATE OF NEW MEXICO

MARCH 18, 2013

SURVEY NO. 1619

MADRON SURVEYING, INC. 301 SOUTH CANAL (575) 234-3341 CARLSBAD, NEW MEXICO

SECTION 22, TOWNSHIP 25 SOUTH, RANGE 27 EAST, N.M.P.M.
EDDY COUNTY, STATE OF NEW MEXICO
AERIAL PHOTO



NOT TO SCALE
AERIAL PHOTO:
GOOGLE EARTH
JULY 2011

DEVON ENERGY PRODUCTION COMPANY, L.P.

IRRITABLE "22" STATE COM #1H

LOCATED 330 FT. FROM THE NORTH LINE
AND 660 FT. FROM THE EAST LINE OF
SECTION 22, TOWNSHIP 25 SOUTH,
RANGE 27 EAST, N.M.P.M.
EDDY COUNTY, STATE OF NEW MEXICO

MARCH 18, 2013

SURVEY NO. 1619

MADRON SURVEYING, INC. 301 SOUTH CANAL CARLSBAD, NEW MEXICO
(575) 234-3341