

District I  
1625 N. French Dr., Hobbs, NM 88240  
Phone: (575) 393-6161 Fax: (575) 393-0720

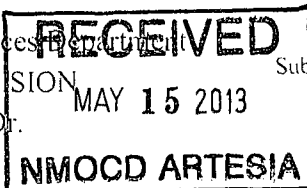
District II  
511 S. First St., Artesia, NM 88210  
Phone: (575) 748-1283 Fax: (575) 748-9720

District III  
1000 Rio Brazos Road, Aztec, NM 87410  
Phone: (505) 354-6178 Fax: (505) 354-6170

District IV  
1220 S. St. Francis Dr., Santa Fe, NM 87505  
Phone: (505) 476-3460 Fax: (505) 476-3462

State of New Mexico  
Energy, Minerals & Natural Resources Department  
OIL CONSERVATION DIVISION  
1220 South St. Francis Dr.  
Santa Fe, NM 87505

Form C-102  
Revised August 1, 2011  
Submit one copy to appropriate  
District Office



☐ AMENDED REPORT

WELL LOCATION AND ACREAGE DEDICATION PLAT

<sup>1</sup> API Number <b>30-015-41363</b>	<sup>2</sup> Pool Code <b>96641</b>	<sup>3</sup> Pool Name <b>Paduca; Bone Spring</b>
<sup>4</sup> Property Code <b>300635</b>	<sup>5</sup> Property Name <b>COTTON DRAW UNIT</b>	
<sup>7</sup> OGRID No. <b>6137</b>	<sup>8</sup> Operator Name <b>DEVON ENERGY PRODUCTION COMPANY, L.P.</b>	
		<sup>6</sup> Well Number <b>219H</b>
		<sup>9</sup> Elevation <b>3452.8</b>

<sup>10</sup> Surface Location

U.I. or lot no.	Section	Township	Range	Lot Idn	Feet from the	North/South line	Feet from the	East/West line	County
<b>P</b>	<b>2</b>	<b>25 S</b>	<b>31 E</b>		<b>200</b>	<b>SOUTH</b>	<b>1110</b>	<b>EAST</b>	<b>EDDY</b>

<sup>11</sup> Bottom Hole Location If Different From Surface

U.I. or lot no.	Section	Township	Range	Lot Idn	Feet from the	North/South line	Feet from the	East/West line	County
<b>2</b>	<b>2</b>	<b>25 S</b>	<b>31 E</b>		<b>330</b>	<b>NORTH</b>	<b>1980</b>	<b>EAST</b>	<b>EDDY</b>

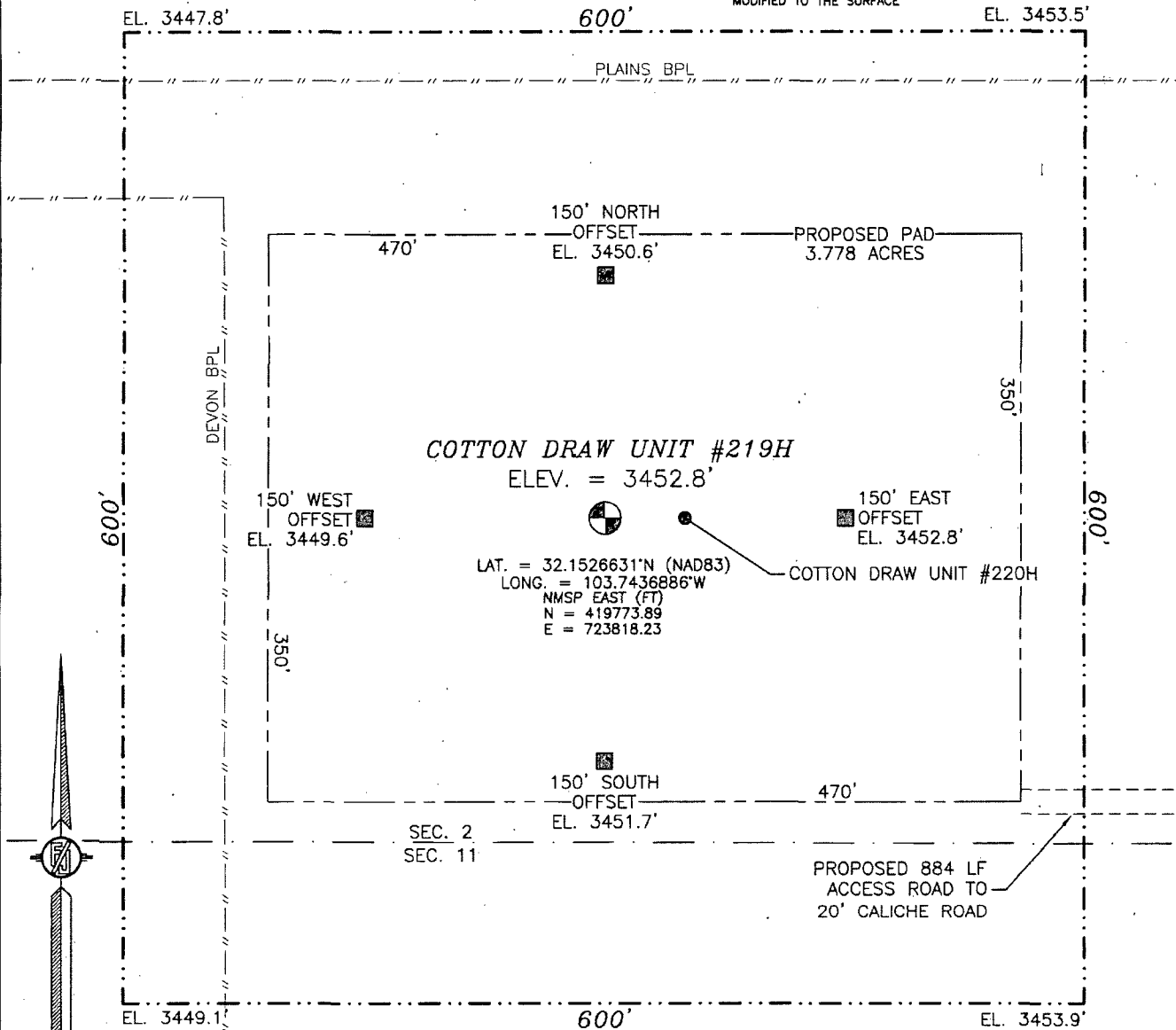
<sup>12</sup> Dedicated Acres	<sup>13</sup> Joint or Infill	<sup>14</sup> Consolidation Code	<sup>15</sup> Order No.
<b>160.08</b>			

No allowable will be assigned to this completion until all interests have been consolidated or a non-standard unit has been approved by the division.

<p>S89°57'44"E 2646.81 FT</p> <p>NW CORNER SEC. 2 LAT. = 32.1667474°N LONG. = 103.7571765°W NMSP EAST (FT) N = 424874.92 E = 719616.56</p> <p>W O CORNER SEC. 2 LAT. = 32.1595170°N LONG. = 103.7571486°W NMSP EAST (FT) N = 422244.67 E = 719639.30</p> <p>SW CORNER SEC. 2 LAT. = 32.1522404°N LONG. = 103.7572193°W NMSP EAST (FT) N = 419597.42 E = 719631.59</p> <p>NOTE: LATITUDE AND LONGITUDE COORDINATES ARE SHOWN USING THE NORTH AMERICAN DATUM OF 1983 (NAD83). LISTED NEW MEXICO STATE PLANE EAST COORDINATES ARE GRID (NAD83). BASIS OF BEARING AND DISTANCES USED ARE NEW MEXICO STATE PLANE EAST COORDINATES MODIFIED TO THE SURFACE.</p>		<p>S89°58'34"E 2643.08 FT</p> <p>N Q CORNER SEC. 2 LAT. = 32.1667033°N LONG. = 103.7486249°W NMSP EAST (FT) N = 424873.17 E = 722262.79</p> <p>NE CORNER SEC. 2 LAT. = 32.1666805°N LONG. = 103.7400854°W NMSP EAST (FT) N = 424872.06 E = 724905.29</p> <p>E O CORNER SEC. 2 LAT. = 32.1593306°N LONG. = 103.7400976°W NMSP EAST (FT) N = 422205.54 E = 724916.21</p> <p>SE CORNER SEC. 2 LAT. = 32.1520883°N LONG. = 103.7401032°W NMSP EAST (FT) N = 419570.86 E = 724929.01</p>		<p><b>17 OPERATOR CERTIFICATION</b> I hereby certify that the information contained herein is true and complete to the best of my knowledge and belief, and that this organization either owns a working interest or unleased mineral interest in the land including the proposed bottom hole location or has a right to drill this well at this location pursuant to a contract with an owner of such a mineral or working interest, or to a voluntary pooling agreement or a compulsory pooling order heretofore entered by the division.</p> <p>Signature _____ Date _____ <b>Patti Riechers, Regulatory Specialist</b> Printed Name <b>Patti.Riechers@dmv.com</b> E-mail Address</p>
<p>LOT 4 LOT 3</p> <p>LOT 2 LOT 1</p> <p>1980'</p> <p>330'</p> <p>BOTTOM OF HOLE</p> <p>BOTTOM OF HOLE LAT. = 32.1661430°N LONG. = 103.7484835°W NMSP EAST (FT) N = 424672.93 E = 722266.52</p> <p>COTTON DRAW UNIT #219H ELEV. = 3452.8 LAT. = 32.1526331°N (NAD83) LONG. = 103.7436886°W NMSP EAST (FT) N = 419773.89 E = 723818.23</p> <p>SURFACE LOCATION</p>		<p><b>18 SURVEYOR CERTIFICATION</b> I hereby certify that the well location shown on this plat was plotted from field notes of actual surveys made by me or under my supervision, and that the same is true and correct to the best of my belief.</p> <p>MAY 15 2013</p> <p>Date of Survey</p> <p>Signature and Seal of Professional Surveyor <i>[Signature]</i> Certificate Number: 11101 SURVEY NO. 1793</p>		

SECTION 2, TOWNSHIP 25 SOUTH, RANGE 31 EAST, N.M.P.M.  
EDDY COUNTY, STATE OF NEW MEXICO  
**SITE MAP**

NOTE: LATITUDE AND LONGITUDE COORDINATES ARE SHOWN USING THE NORTH AMERICAN DATUM OF 1983 (NAD83). LISTED NEW MEXICO STATE PLANE EAST COORDINATES ARE GRID (NAD83). BASIS OF BEARING AND DISTANCES USED ARE NEW MEXICO STATE PLANE EAST COORDINATES MODIFIED TO THE SURFACE



0 10 50 100 200  
SCALE 1" = 100'

**DIRECTIONS TO LOCATION**

FROM STATE HIGHWAY 128 AND PAVED CR 1 (ORLA ROAD) GO SOUTH ON CR 1 6.2 MILES, TURN RIGHT ON CALICHE LEASE ROAD (MONSANTO ROAD) AND GO WEST 2.1 MILES, TURN RIGHT AND GO NORTH 0.75 MILES, BEND LEFT AND GO WEST 2.0 MILES, TURN RIGHT AND GO NORTH 1.15 MILES TO A PROPOSED ROAD SURVEY AND FOLLOW FLAGS WEST 884 FT. TO THE SOUTHEAST CORNER OF PROPOSED PAD FOR THIS LOCATION.

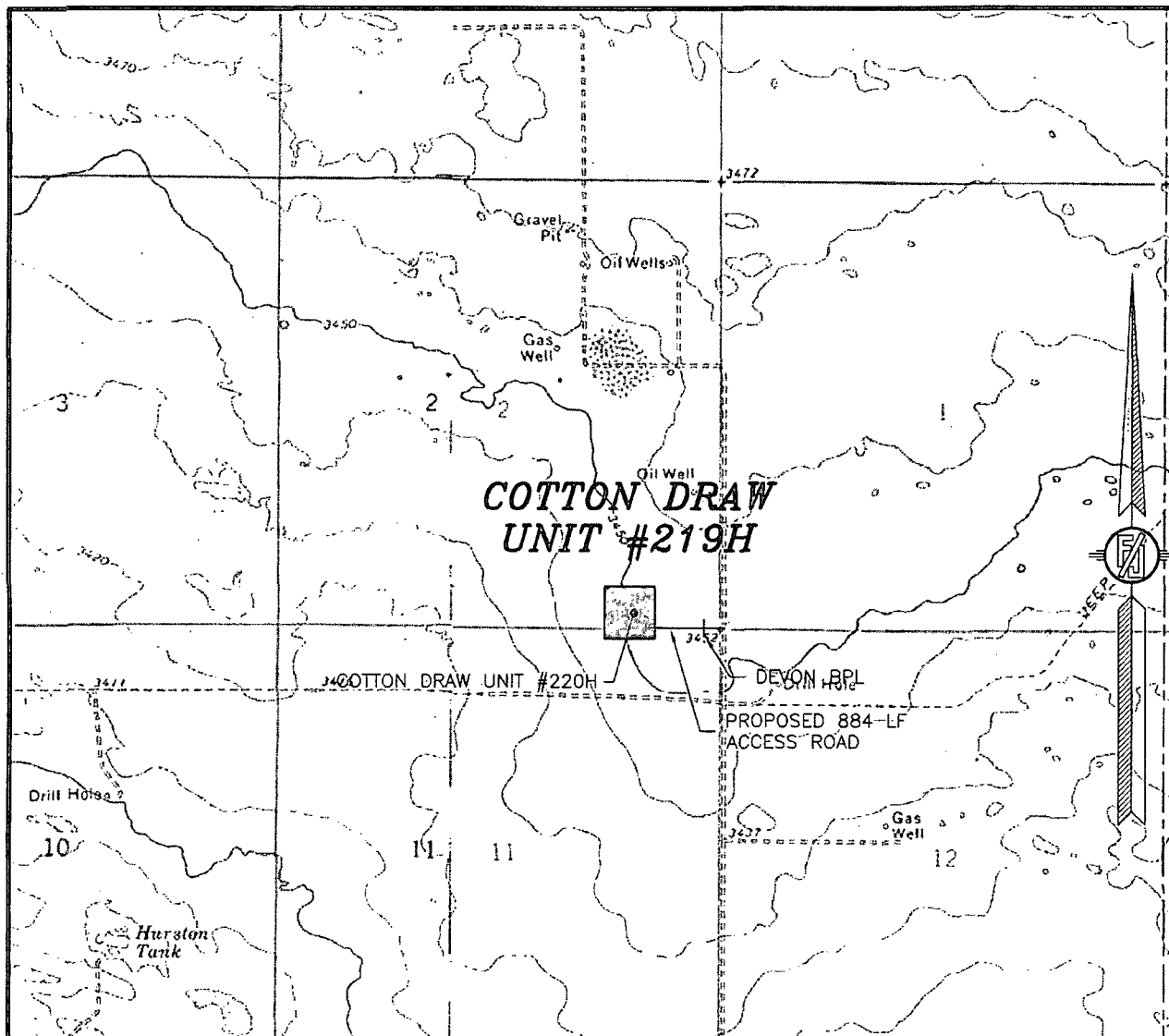
DEVON ENERGY PRODUCTION COMPANY, L.P.  
**COTTON DRAW UNIT #219H**  
LOCATED 200 FT. FROM THE SOUTH LINE  
AND 1110 FT. FROM THE EAST LINE OF  
SECTION 2, TOWNSHIP 25 SOUTH,  
RANGE 31 EAST, N.M.P.M.  
EDDY COUNTY, STATE OF NEW MEXICO

MAY 3, 2013

SURVEY NO. 1793

MADRON SURVEYING, INC. 301 SOUTH CANAL CARLSBAD, NEW MEXICO  
(575) 234-3341

SECTION 2, TOWNSHIP 25 SOUTH, RANGE 31 EAST, N.M.P.M.  
EDDY COUNTY, STATE OF NEW MEXICO  
LOCATION VERIFICATION MAP



USGS QUAD MAP:  
PADUCA BREAKS NW

NOT TO SCALE

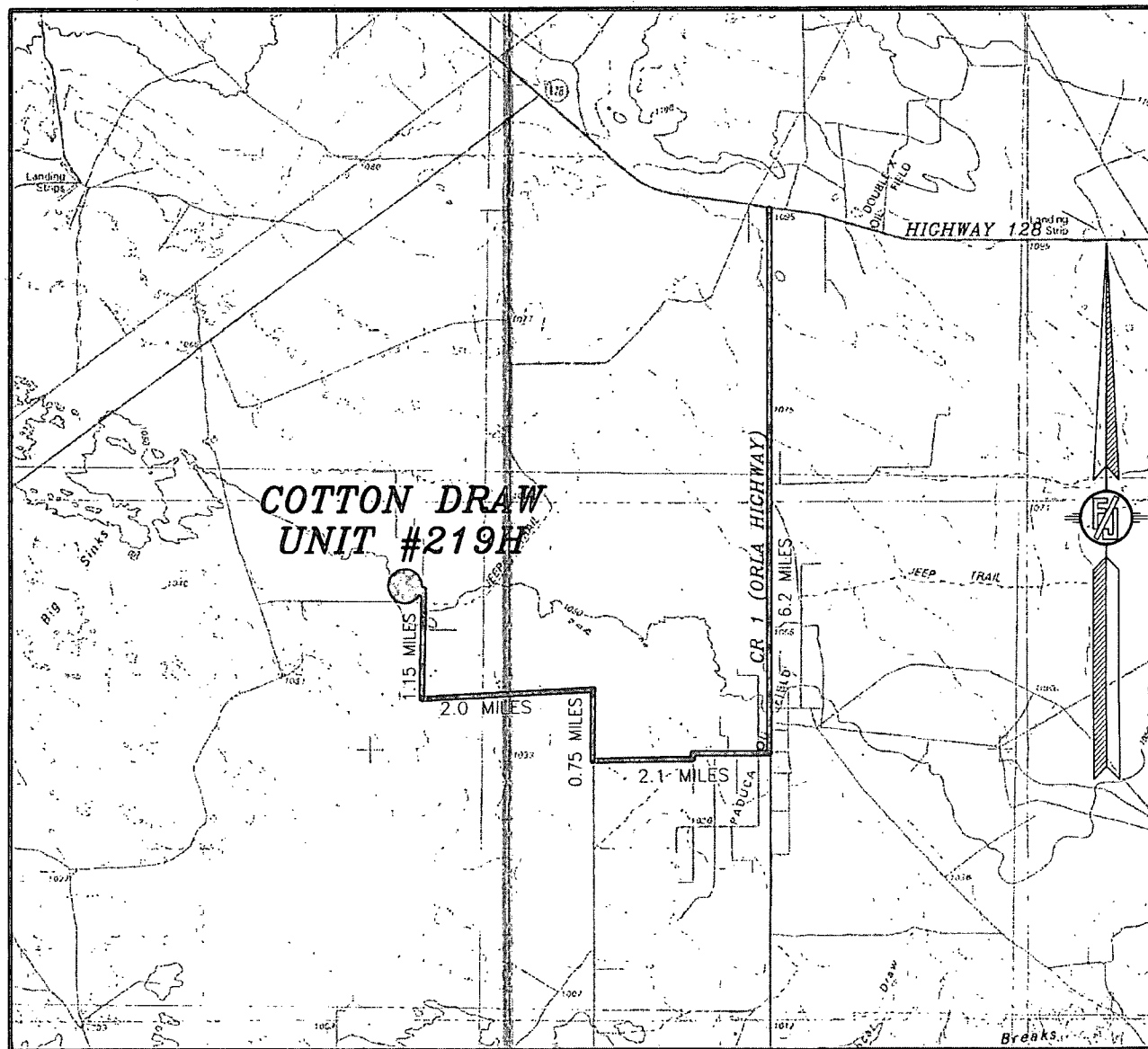
DEVON ENERGY PRODUCTION COMPANY, L.P.  
**COTTON DRAW UNIT #219H**  
LOCATED 200 FT. FROM THE SOUTH LINE  
AND 1110 FT. FROM THE EAST LINE OF  
SECTION 2, TOWNSHIP 25 SOUTH,  
RANGE 31 EAST, N.M.P.M.  
EDDY COUNTY, STATE OF NEW MEXICO

MAY 3, 2013

SURVEY NO. 1793

MADRON SURVEYING, INC. 301 SOUTH CANAL CARLSBAD, NEW MEXICO  
(575) 234-3341

SECTION 2, TOWNSHIP 25 SOUTH, RANGE 31 EAST, N.M.P.M.  
EDDY COUNTY, STATE OF NEW MEXICO  
VICINITY MAP



NOT TO SCALE

DEVON ENERGY PRODUCTION COMPANY, L.P.

**COTTON DRAW UNIT #219H**

LOCATED 200 FT. FROM THE SOUTH LINE  
AND 1110 FT. FROM THE EAST LINE OF  
SECTION 2, TOWNSHIP 25 SOUTH,  
RANGE 31 EAST, N.M.P.M.  
EDDY COUNTY, STATE OF NEW MEXICO

MAY 3, 2013

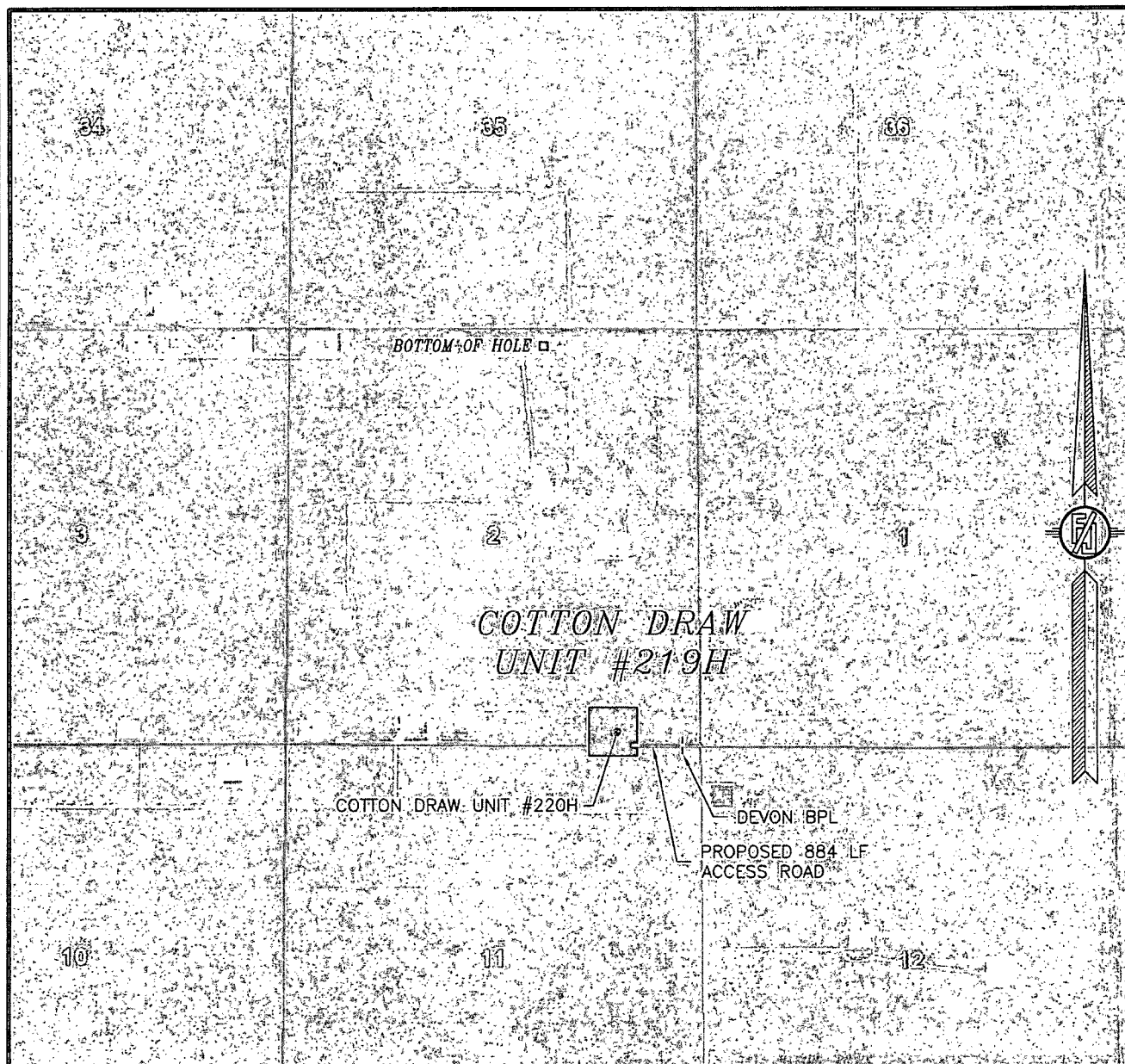
**DIRECTIONS TO LOCATION**

FROM STATE HIGHWAY 128 AND PAVED CR 1 (ORLA ROAD) GO SOUTH ON CR 1 6.2 MILES, TURN RIGHT ON CALICHE LEASE ROAD (MONSANTO ROAD) AND GO WEST 2.1 MILES, TURN RIGHT AND GO NORTH 0.75 MILES, BEND LEFT AND GO WEST 2.0 MILES, TURN RIGHT AND GO NORTH 1.15 MILES TO A PROPOSED ROAD SURVEY AND FOLLOW FLAGS WEST 884 FT. TO THE SOUTHEAST CORNER OF PROPOSED PAD FOR THIS LOCATION.

MADRON SURVEYING, INC. 301 SOUTH CANAL (575) 234-3341 CARLSBAD, NEW MEXICO

SURVEY NO. 1793

SECTION 2, TOWNSHIP 25 SOUTH, RANGE 31 EAST, N.M.P.M.  
EDDY COUNTY, STATE OF NEW MEXICO  
AERIAL PHOTO



NOT TO SCALE  
AERIAL PHOTO:  
GOOGLE EARTH  
MARCH 2012

DEVON ENERGY PRODUCTION COMPANY, L.P.  
**COTTON DRAW UNIT #219H**

LOCATED 200 FT. FROM THE SOUTH LINE  
AND 1110 FT. FROM THE EAST LINE OF  
SECTION 2, TOWNSHIP 25 SOUTH,  
RANGE 31 EAST, N.M.P.M.  
EDDY COUNTY, STATE OF NEW MEXICO

MAY 3, 2013

SURVEY NO. 1793

MADRON SURVEYING, INC. 301 SOUTH CANAL (575) 234-3341 CARLSBAD, NEW MEXICO