

RECEIVED

MAY 29 2013

District I
1625 N. French Dr., Hobbs, NM 88240
District II
1301 W. Grand Avenue, Artesia, NM 88210
District III
1000 Rio Brazos Rd., Aztec, NM 87410
District IV
1220 S. St. Francis Dr., Santa Fe, NM 87505

State of New Mexico
Energy, Minerals & Natural Resources Department
NMOC ARTESIA
OIL CONSERVATION DIVISION
1220 South St. Francis Dr.
Santa Fe, NM 87505

Form C-102
Revised October 15, 2009
Submit one copy to appropriate
District Office
☐ AMENDED REPORT

WELL LOCATION AND ACREAGE DEDICATION PLAT

¹ API Number 30-015-40506	² Pool Code 49622	³ Pool Name Parkway; Bone Spring
⁴ Property Code 38434	⁵ Property Name TURQUOISE PWU "27"	⁶ Well Number 2H
⁷ OGRID No. 6137	⁸ Operator Name DEVON ENERGY PRODUCTION COMPANY, L.P.	⁹ Elevation 3332.8

¹⁰ Surface Location

UL or lot no.	Section	Township	Range	Lot Idn	Feet from the	North/South line	Feet from the	East/West line	County
H	27	19 S	29 E		1980	NORTH	50	EAST	EDDY

¹¹ Bottom Hole Location If Different From Surface

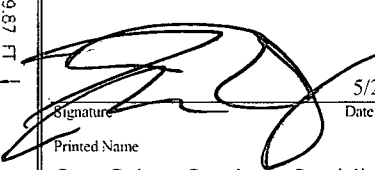
UL or lot no.	Section	Township	Range	Lot Idn	Feet from the	North/South line	Feet from the	East/West line	County
E	27	19 S	29 E		1673	NORTH	335	WEST	EDDY

¹² Dedicated Acres 160	¹³ Joint or Infill	¹⁴ Consolidation Code	¹⁵ Order No.
--------------------------------------	-------------------------------	----------------------------------	-------------------------

No allowable will be assigned to this completion until all interests have been consolidated or a non-standard unit has been approved by the division.

<p>N89°22'07"W 2632.22 FT</p> <p>NW CORNER SEC. 27 LAT. = 32.6390370°N LONG. = 104.0712463°W NMSP EAST (FT) N = 596312.05 E = 622012.94</p>		<p>S89°50'52"W 2635.86 FT</p> <p>N 0 CORNER SEC. 27 LAT. = 32.6389391°N LONG. = 104.0626959°W NMSP EAST (FT) N = 596283.05 E = 624645.01</p>		<p>NE CORNER SEC. 27 LAT. = 32.6389396°N LONG. = 104.0541330°W NMSP EAST (FT) N = 596290.05 E = 627280.86</p>	
<p>500°09'08"W 2631.63 FT</p>		<p>BOTTOM OF HOLE LAT. = 32.6326768°N</p>		<p>MO0°12'42"W 2639.67 FT</p>	
<p>500°09'08"W 2631.63 FT</p>		<p>TURQUOISE PWU "27" #2H NMSP EAST (FT) N = 593660.08 E = 622336.70</p>		<p>LOCATION NMSP EAST (FT) N = 594310.36 E = 627290.61</p>	
<p>500°09'08"W 2631.63 FT</p>		<p>PP: 1980 FNL & 50 FEL Project Area: XXXXXXXXXXXXXXXXXXXX Production Area: XXXXXXXXXXXXXXXXXXXX</p>		<p>MO0°06'34"W 2644.93 FT</p>	
<p>500°09'08"W 2631.63 FT</p>		<p>SW CORNER SEC. 27 LAT. = 32.6244740°N LONG. = 104.0713099°W NMSP EAST (FT) N = 591013.90 E = 622006.42</p>		<p>SE CORNER SEC. 27 LAT. = 32.6244132°N LONG. = 104.0541300°W NMSP EAST (FT) N = 591005.28 E = 627295.67</p>	
<p>S89°54'24"E 2644.63 FT</p>				<p>S89°54'24"E 2644.63 FT</p>	

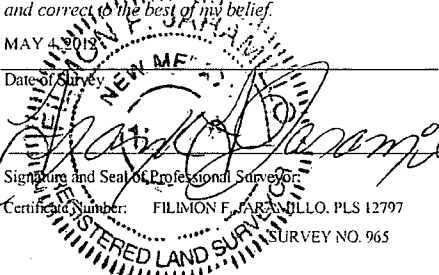
¹⁷ OPERATOR CERTIFICATION
I hereby certify that the information contained herein is true and complete to the best of my knowledge and belief, and that this organization either owns a working interest or unleased mineral interest in the land including the proposed bottom hole location or has a right to drill this well at this location pursuant to a contract with an owner of such a mineral or working interest, or to a voluntary pooling agreement or a compulsory pooling order heretofore entered by the division.

Signature:  Date: 5/23/2013

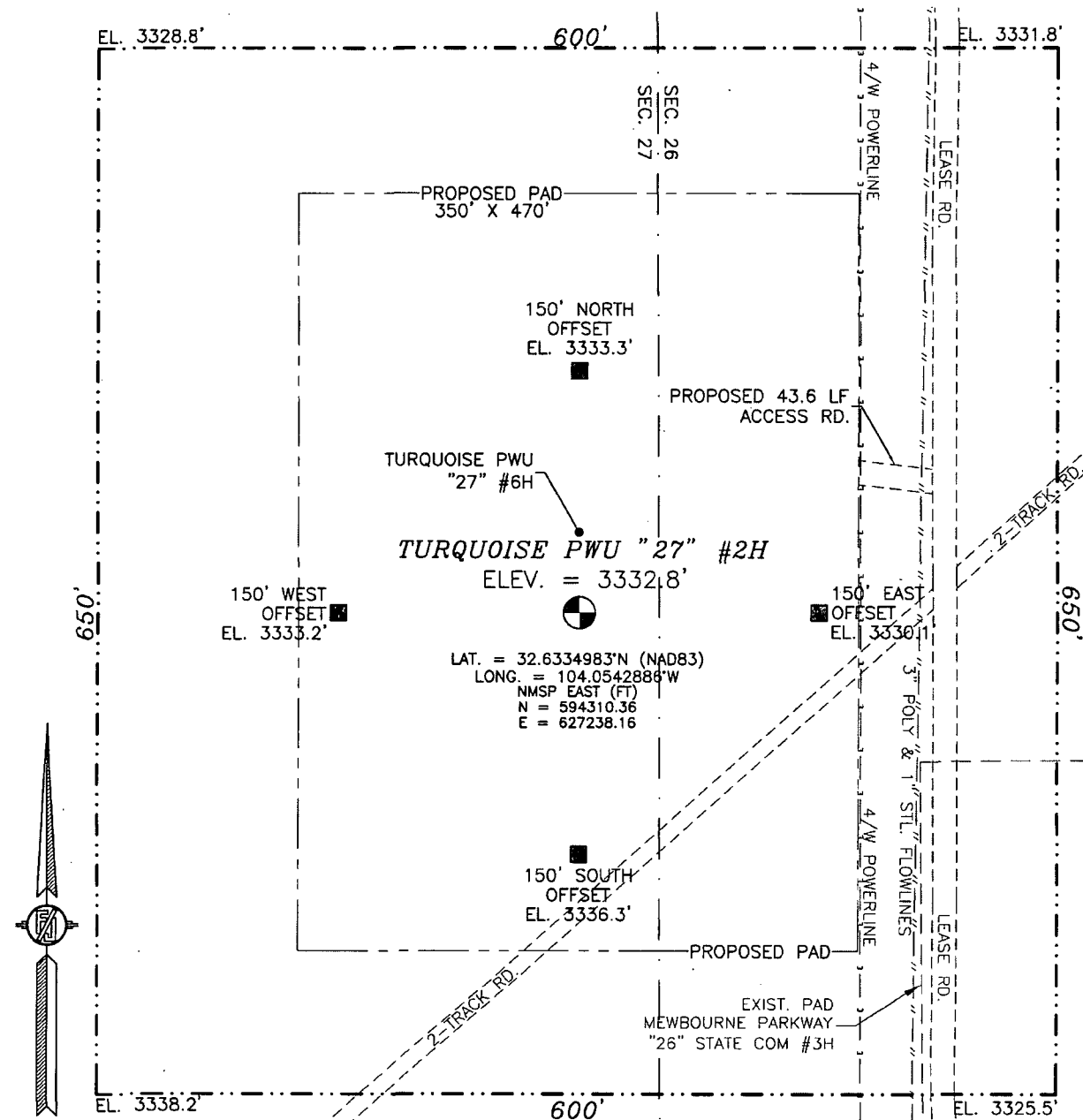
Printed Name: Ryan Delong, Regulatory Specialist

¹⁸ SURVEYOR CERTIFICATION
I hereby certify that the well location shown on this plat was plotted from field notes of actual surveys made by me or under my supervision, and that the same is true and correct to the best of my belief.

MAY 4 2013
Date of Survey

Signature and Seal of Professional Surveyor: 
Certificate Number: FILIMON F. JARAMILLO, PLS 12797
REGISTERED LAND SURVEYOR SURVEY NO. 965

SECTION 27, TOWNSHIP 19 SOUTH, RANGE 29 EAST, N.M.P.M.
EDDY COUNTY, STATE OF NEW MEXICO



LAT. = 32.6334983°N (NAD83)
LONG. = 104.0542886°W
NMSP EAST (FT)
N = 594310.36
E = 627238.16

010 50 100 200

SCALE 1" = 100'

DIRECTIONS TO LOCATION

FROM THE INTERSECTION OF CR 210 (OLD LOCO) AND CR 235 (CURRY COMB) GO SOUTHEAST ON CR 235 FOR APPROX. 2.6 MILES. GO SOUTH FOR APPROX. 0.4 OF A MILE. GO NORTHWEST APPROX. 0.7 OF A MILE. GO SOUTH APPROX. 0.2 OF A MILE. LOCATION IS APPROX. 200 FT SOUTH.

DEVON ENERGY PRODUCTION COMPANY, L.P.

TURQUOISE PWU "27" #2H

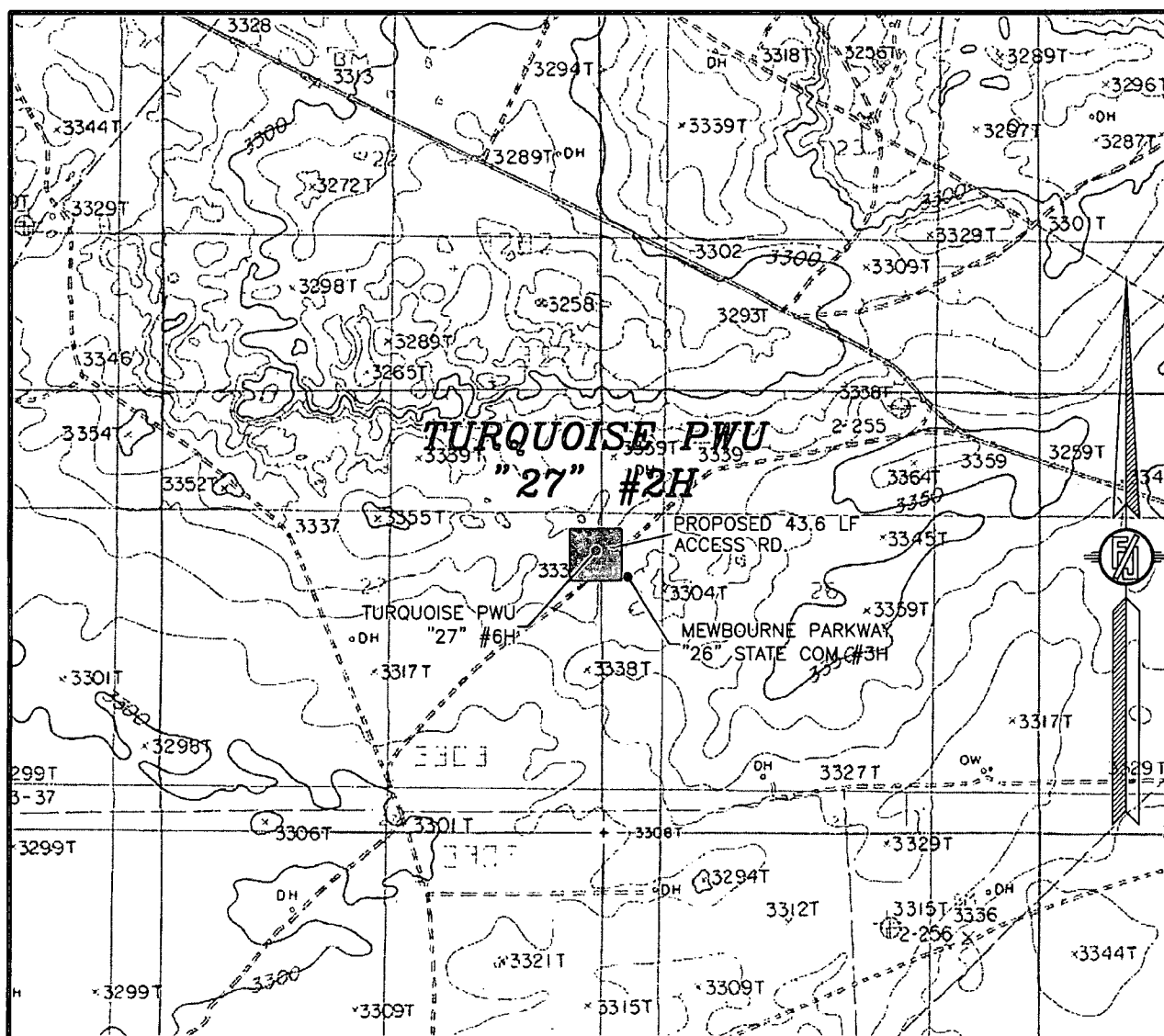
LOCATED 1980 FT. FROM THE NORTH LINE
AND 50 FT. FROM THE EAST LINE OF
SECTION 27, TOWNSHIP 19 SOUTH,
RANGE 29 EAST, N.M.P.M.
EDDY COUNTY, STATE OF NEW MEXICO

MAY 4, 2012

SURVEY NO. 965

MADRON SURVEYING, INC. 301 SOUTH CANAL (575) 234-3341 CARLSBAD, NEW MEXICO

SECTION 27, TOWNSHIP 19 SOUTH, RANGE 29 EAST, N.M.P.M.
 EDDY COUNTY, STATE OF NEW MEXICO
 LOCATION VERIFICATION MAP



USGS QUAD MAP:
 ILLINOIS CAMP NE

NOT TO SCALE

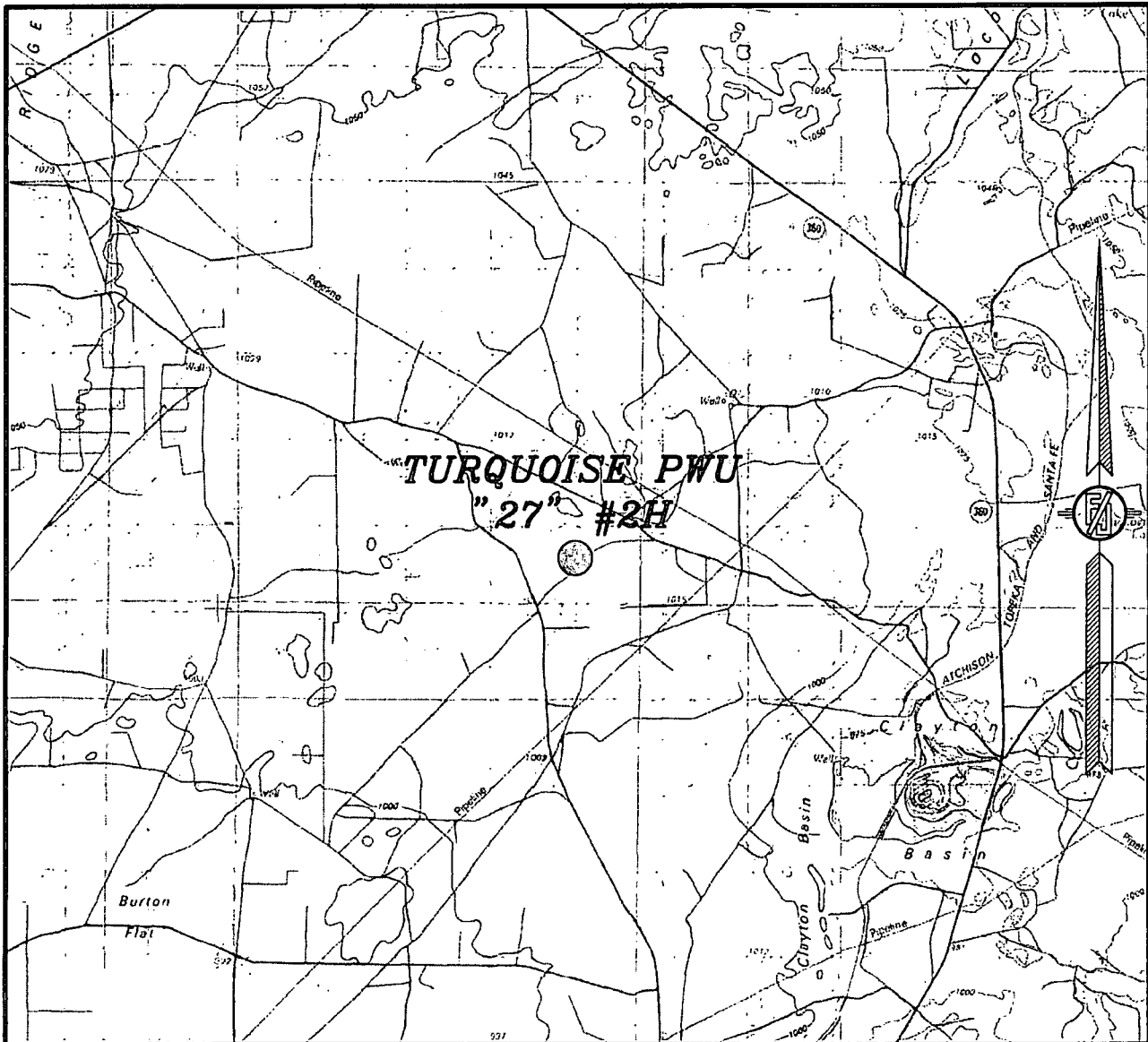
DEVON ENERGY PRODUCTION COMPANY, L.P.
TURQUOISE PWU "27" #2H
 LOCATED 1980 FT. FROM THE NORTH LINE
 AND 50 FT. FROM THE EAST LINE OF
 SECTION 27, TOWNSHIP 19 SOUTH,
 RANGE 29 EAST, N.M.P.M.
 EDDY COUNTY, STATE OF NEW MEXICO

MAY 4, 2012

SURVEY NO. 965

MADRON SURVEYING, INC. 301 SOUTH CANAL (575) 234-3341 CARLSBAD, NEW MEXICO

SECTION 27, TOWNSHIP 19 SOUTH, RANGE 29 EAST, N.M.P.M.
EDDY COUNTY, STATE OF NEW MEXICO
VICINITY MAP



NOT TO SCALE

DEVON ENERGY PRODUCTION COMPANY, L.P.

TURQUOISE PWU "27" #2H

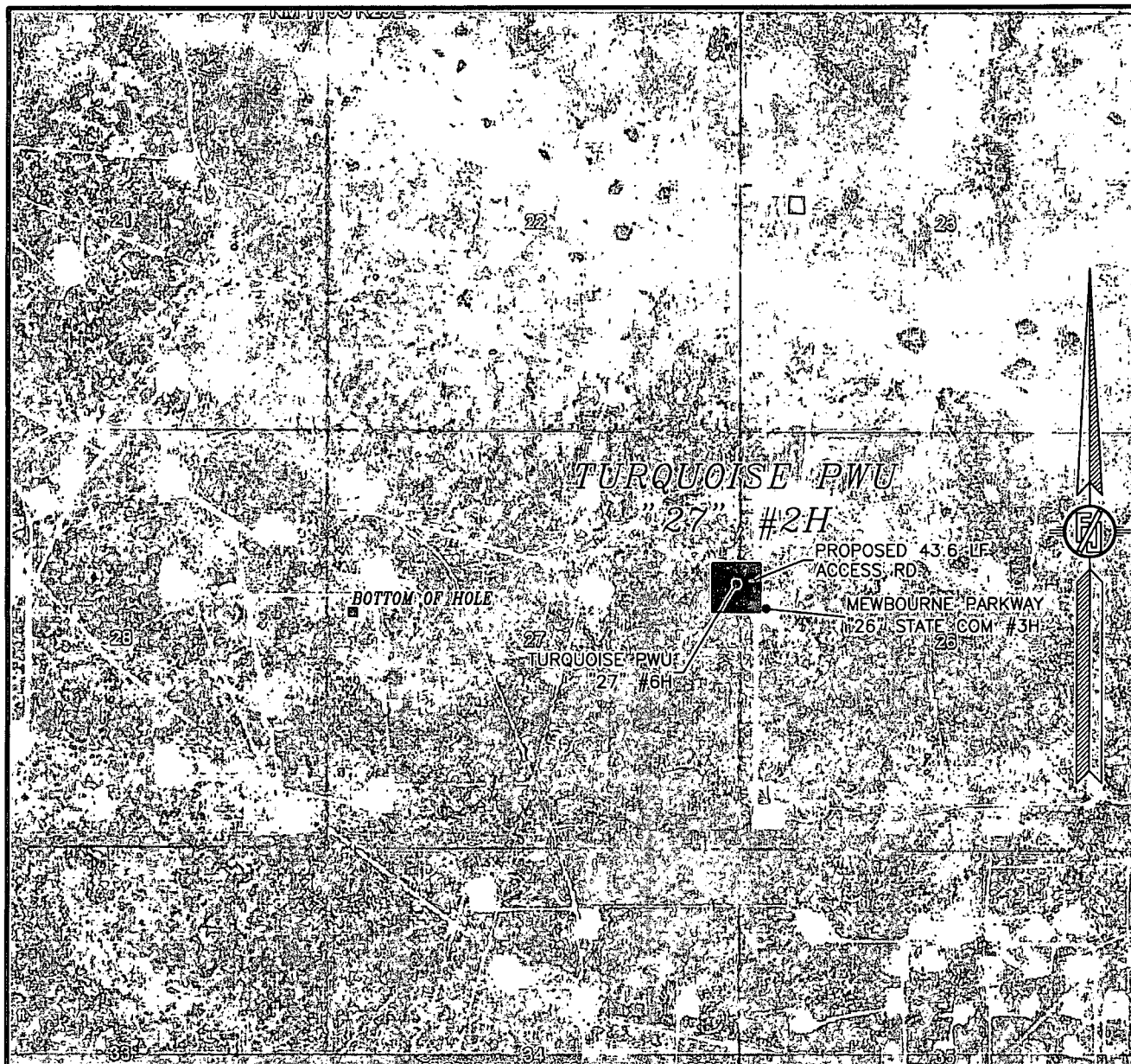
LOCATED 1980 FT. FROM THE NORTH LINE
AND 50 FT. FROM THE EAST LINE OF
SECTION 27, TOWNSHIP 19 SOUTH,
RANGE 29 EAST, N.M.P.M.
EDDY COUNTY, STATE OF NEW MEXICO

MAY 4, 2012

SURVEY NO. 965

MADRON SURVEYING, INC. 301 SOUTH CANAL CARLSBAD, NEW MEXICO
(575) 234-3341

SECTION 27, TOWNSHIP 19 SOUTH, RANGE 29 EAST, N.M.P.M.
 EDDY COUNTY, STATE OF NEW MEXICO
 AERIAL PHOTO



NOT TO SCALE
 AERIAL PHOTO:
 GOOGLE EARTH
 JUNE, 2011

DEVON ENERGY PRODUCTION COMPANY, L.P.

TURQUOISE PWU "27" #2H

LOCATED 1980 FT. FROM THE NORTH LINE
 AND 50 FT. FROM THE EAST LINE OF
 SECTION 27, TOWNSHIP 19 SOUTH,
 RANGE 29 EAST, N.M.P.M.
 EDDY COUNTY, STATE OF NEW MEXICO

MAY 4, 2012

SURVEY NO. 965

MADRON SURVEYING, INC. 301 SOUTH CANAL CARLSBAD, NEW MEXICO
 (575) 234-3341