

DISTRICT I
1625 N. French Dr., Hobbs, NM 88240
Phone: (575) 393-6161 Fax: (575) 393-0720
DISTRICT II
811 S. First St., Artesia, NM 88210
Phone: (575) 748-1283 Fax: (575) 748-9720
DISTRICT III
1000 Rio Brazos Road, Aztec, NM 87410
Phone: (505) 334-6178 Fax: (505) 334-6170
DISTRICT IV
1220 S. St. Francis Dr., Santa Fe, NM 87505
Phone: (505) 476-3460 Fax: (505) 476-3462

State of New Mexico
Energy, Minerals & Natural Resources Department
OIL CONSERVATION DIVISION
1220 South St. Francis Dr.
Santa Fe, New Mexico 87505

Form C-102
Revised August 1, 2011
Submit one copy to appropriate
District Office

☐ AMENDED REPORT

WELL LOCATION AND ACREAGE DEDICATION PLAT

API Number 30-015-40550	Pool Code 96831	Pool Name Cedar Lake, Glorieta - Yeso
Property Code 308724	Property Name NFE FEDERAL	Well Number 015
OGRID No. 873	Operator Name APACHE CORPORATION	Elevation 3918'

Surface Location

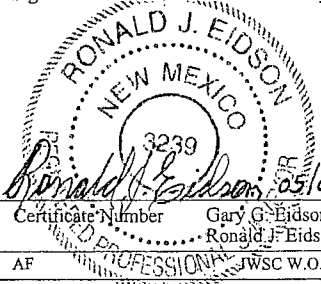
UL or lot No.	Section	Township	Range	Lot Idn	Feet from the	North/South line	Feet from the	East/West line	County
1	5	17-S	31-E		770	NORTH	670	EAST	EDDY

Bottom Hole Location If Different From Surface

UL or lot No.	Section	Township	Range	Lot Idn	Feet from the	North/South line	Feet from the	East/West line	County

Dedicated Acres 39.94	Joint or Infill	Consolidation Code	Order No.
---------------------------------	-----------------	--------------------	-----------

NO ALLOWABLE WILL BE ASSIGNED TO THIS COMPLETION UNTIL ALL INTERESTS HAVE BEEN CONSOLIDATED OR A NON-STANDARD UNIT HAS BEEN APPROVED BY THE DIVISION

4	3	2	1
39.96 AC.	39.95 AC.	39.95 AC.	39.94 AC.
<p>SEE DETAIL</p> <p>770'</p> <p>670'</p>			<p>DETAIL</p> <p>3910.6'</p> <p>3923.2'</p> <p>600'</p> <p>3910.4'</p> <p>3924.4'</p>
<p>GEODETIC COORDINATES NAD 27 NME</p> <p>SURFACE LOCATION Y=679995.5 N X=637654.9 E</p> <p>LAT.=32.868587° N LONG.=103.885002° W</p> <p>LAT.=32° 52' 07" N LONG.=103° 53' 06" W</p>			
<p>OPERATOR CERTIFICATION</p> <p>I hereby certify that the information herein is true and complete to the best of my knowledge and belief, and that this organization either owns a working interest or unleased mineral interest in the land including the proposed bottom hole location or has a right to drill this well at this location pursuant to a contract with an owner of such mineral or working interest, or to a voluntary pooling agreement or a compulsory pooling order heretofore entered by the division.</p> <p><i>[Signature]</i> 05/23/13 Signature Date Fatima Vasquez Printed Name Fatima.Vasquez@apachecorp.com E-mail Address</p>			
<p>SURVEYOR CERTIFICATION</p> <p>I hereby certify that the well location shown on this plat was plotted from field notes of actual surveys made by me or under my supervision, and that the same is true and correct to the best of my belief.</p> <p>APRIL 2, 2012 Date of Survey Signature & Seal of Professional Surveyor:  </p> <p>Certificate Number 3239 Gary G. Eidson 12641 Ronald J. Eidson 3239 AF PROFESSIONAL SURVEYOR WSC W.O.: 12.11.0552</p>			

APACHE CORPORATION

5/21/2013

API 30-015-40550

NFE Federal #15

RE-COMPLETION PROCEDURE

Relative Data:

Casing: 5-1/2", 17 lb/ft, J-55

ID = 4.892"

Drift = 4.767"

Capacity = 0.02324 BBL/ft

Burst = 5320 psi; 80% = 4256 psi

Tubing: 2-7/8", 6.5 lb/ft, J-55, 8rd, EUE

Capacity = 0.005794 bbl/ft

Burst = 7260 psi; 80% = 5808 psi

Collapse 7680 psi; 80% = 6144 psi

Yield 99,660 lbs; 80% = 79,728 lbs

5-1/2" x 2-7/8" Annular capacity 0.0152 BBL/ft KB = 13 ft (AGL) PBTD = x,xxx' KB TD = 6,405' KB

1. MIRU. POH w/Production Equipment. RIH set & test CBP @ +/-5570'. Load csg & test CBP & csg to 1000 psi. Rlse pressure
2. Spot 600 gallons 15% HCL across perf area. TOH.
3. Perforate the Paddock/Blinbry zone @ 4830, 42, 56, 64, 97, 4931, 42, 58, 73, 88, 5004, 22, 41, 62, 79, 91, 5118, 40, 54, 72, 89, 5204, 38, 50, 66, 80, 92, 5310, 25, 40, 61, 80, 5403, 34, 52, 67, 84 & 5510'. (1 JSPF) (38 holes) using a charge that generates a .37" - .42" diameter hole with a minimum 21" penetration.
4. RU wellhead tree saver & multi-stg frac tool for fracture stimulating.
5. Acidize/Frac the Paddock/Blinbry dn csg according to vendor recommended procedure.
6. Flow back well until dead. RU reverse unit & swivel.
7. TIH W/4-3/4" bit, bit sub, XO, 6 - 3" DCs, XO, & 2-7/8" tbg to top of fill. DO CBPs @ +/-5570' and CO well to PBTD (COMMINGLING ALL ZONES). Reverse circ clean. TOH & LD DCs & bit.
8. Hydrotest in hole with W/tbg for production as specified by the Artesia office. TIH W/pump & rods as specified by the Artesia office.
9. MIRU pumping unit. Connect electrical service. Construct & tie in flowline. Place well into production.

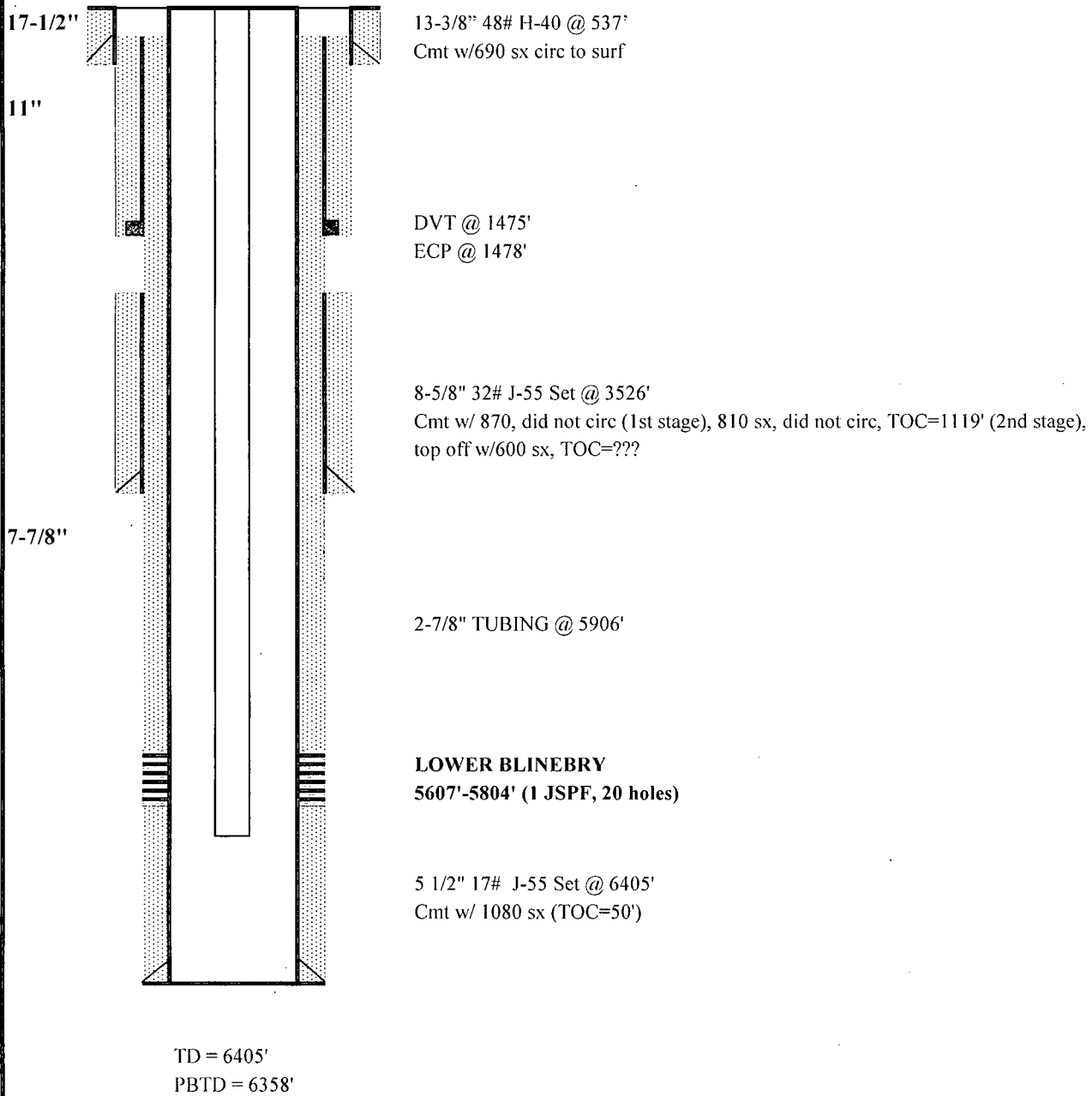
Apache Corp.
Current Wellbore

GROUP: Permian North
FIELD: Cedar Lake (BP)
LEASE/UNIT: NFE Federal
COUNTY: Eddy
API NUMBER: 30-015-40550

DATE: May. 23, 2013
BY: SNH
WELL: #15
STATE: New Mexico

Spud Date: 11/25/2012
Rig Release Date: 12/6/2012

KB = 13'
GL = 3918'



Apache Corp.
Proposed Wellbore

GROUP: Permian North
FIELD: Cedar Lake (BP)
LEASE/UNIT: NFE Federal
COUNTY: Eddy
API NUMBER: 30-015-40550

DATE: May. 23, 2013
BY: SNH
WELL: #15
STATE: New Mexico

Spud Date: 11/25/2012
Rig Release Date: 12/6/2012

KB = 13'
GL = 3918'

