

District I
1625 N. French Dr., Hobbs, NM 88240
Phone: (575) 393-6161 Fax: (575) 393-0990

District II
811 S. First St., Artesia, NM 88210
Phone: (575) 748-1283 Fax: (575) 748-9720

District III
1000 Rio Brazos Road, Aztec, NM 87410
Phone: (505) 334-6178 Fax: (505) 334-6170

District IV
1220 S. St. Francis Dr., Santa Fe, NM 87505
Phone: (505) 476-3460 Fax: (505) 476-3462

State of New Mexico

Form C-101
Revised November 14, 2012

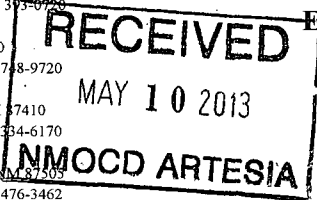
Energy Minerals and Natural Resources

Oil Conservation Division

1220 South St. Francis Dr.

Santa Fe, NM 87505

☐ AMENDED REPORT



APPLICATION FOR PERMIT TO DRILL, RE-ENTER, DEEPEN, PLUGBACK, OR ADD A ZONE

1. Operator Name and Address COG Operating LLC 2208 West Main Street Artesia, NM 88210		2. OGRID Number 229137
3. Property Code 39920	4. Property Name Apple 5 State SWD	5. Well No 1

7. Surface Location

UL - Lot	Section	Township	Range	Lot Idn	Feet from	N/S Line	Feet From	E/W Line	County
B	5	26S	28E		990'	North	1980'	East	Eddy

8. Proposed Bottom Hole Location

UL - Lot	Section	Township	Range	Lot Idn	Feet from	N/S Line	Feet From	E/W Line	County

9. Pool Information

Pool Name	Pool Code
SWD; Devonian	96101

Additional Well Information

11. Work Type New Well	12. Well Type SWD	13. Cable/Rotary	14. Lease Type State	15. Ground Level Elevation 3017.4'
16. Multiple N	17. Proposed Depth 15,400'	18. Formation Delaware	19. Contractor	20. Spud Date 5/10/2013
Depth to Ground water		Distance from nearest fresh water well		Distance to nearest surface water

21. Proposed Casing and Cement Program

Type	Hole Size	Casing Size	Casing Weight/ft	Setting Depth	Sacks of Cement	Estimated TOC
Surface	26	20	94	300'	550	
Intrmd	17.5	13.375	54.5	2300'	1350	
Poduction	12.25	9.625	40	9100'	1350	2100'
Liner	8.75	7	29	14100'	500	9100'
Disposal	6.125	OH		15400'		

Casing/Cement Program: Additional Comments

Plan to drill a 26" hole to 300' with Fresh Water. Run 17-1/2", 94#, H-40 csg and cmt to surface. Drill 17-1/2" hole to 2300' with Brine, and run 13-3/8", 54.5#, J-55 and cement to surface. Drill 12-1/4" hole to approximately 9100' with cut brine, and run 9-5/8", 40#, J-55/ P-110 csg and cement to 2100'. Drill 8-3/4" hole to approximately 14,100' with cut brine, run & hang a 7", 29#, P-110 liner and cement back to liner hanger. Drill 6-1/8" hole to approximately 15,400' with cut brine, and leave it open hole for salt water disposal purposes.

22. Proposed Blowout Prevention Program

Type	Working Pressure	Test Pressure	Manufacturer
Double Ram	5000	5000	Cameron

23. I hereby certify that the information given above is true and complete to the best of my knowledge and belief. I further certify that I have complied with 19.15.14.9 (A) NMAC <input checked="" type="checkbox"/> and/or 19.15.14.9 (B) NMAC <input checked="" type="checkbox"/> , if applicable. Signature: <i>Mayte Reyes</i>		OIL CONSERVATION DIVISION	
Printed name: Mayte Reyes		Approved By: <i>T.C. Shepard</i>	
Title: Regulatory Analyst		Title: <i>600/415</i>	
E-mail Address: mreyes1@concho.com		Approved Date: <i>5/24/2013</i> Expiration Date: <i>5/24/2015</i>	
Date: 5/9/2013	Phone: 575-748-6945	Conditions of Approval Attached	

RECEIVED

State of New Mexico
Energy, Minerals & Natural Resources Department
OIL CONSERVATION DIVISION
11885 SOUTH ST. FRANCIS DR.
Santa Fe, New Mexico 87505

Form C-102
Revised August 1, 2011
Submit one copy to appropriate

☐ AMENDED REPORT

WELL LOCATION AND ACREAGE DEDICATION PLAT

Property Code
39920

Surface Location

B

Bottom Hole Location If Different From Surface

III. or lot No.

Dedicated Acres

NO ALLOWABLE WILL BE ASSIGNED TO THIS COMPLETION UNTIL ALL INTERESTS HAVE BEEN CONSOLIDATED
OR A NON-STANDARD UNIT HAS BEEN APPROVED BY THE DIVISION

NAD 27
SURFACE LOCATION
Y=391478.7 N
X=570199.3 E
LAT.=32.076088° N
LONG.=104.106693° W

OPERATOR CERTIFICATION

I hereby certify that the information herein is true and complete to the best of my knowledge and belief, and that this organization neither owns a working interest or an unleased mineral interest in the land including the proposed bottom hole location or has a right to drill this well at this location pursuant to a contract with an owner of such mineral or working interest, or to a voluntary pooling agreement or a compulsory pooling order heretofore entered by the division.

Signature Melanie Parker 5/9/13
Date
Printed Name Melanie J Parker
Email Address m.parker@concho.com

SURVEYOR CERTIFICATION

I hereby certify that the well location shown on this plat was plotted from field notes of actual surveys made by me or under my supervision, and that the same is true and correct to the best of my belief.

DECEMBER 12 2012

Date of Survey _____

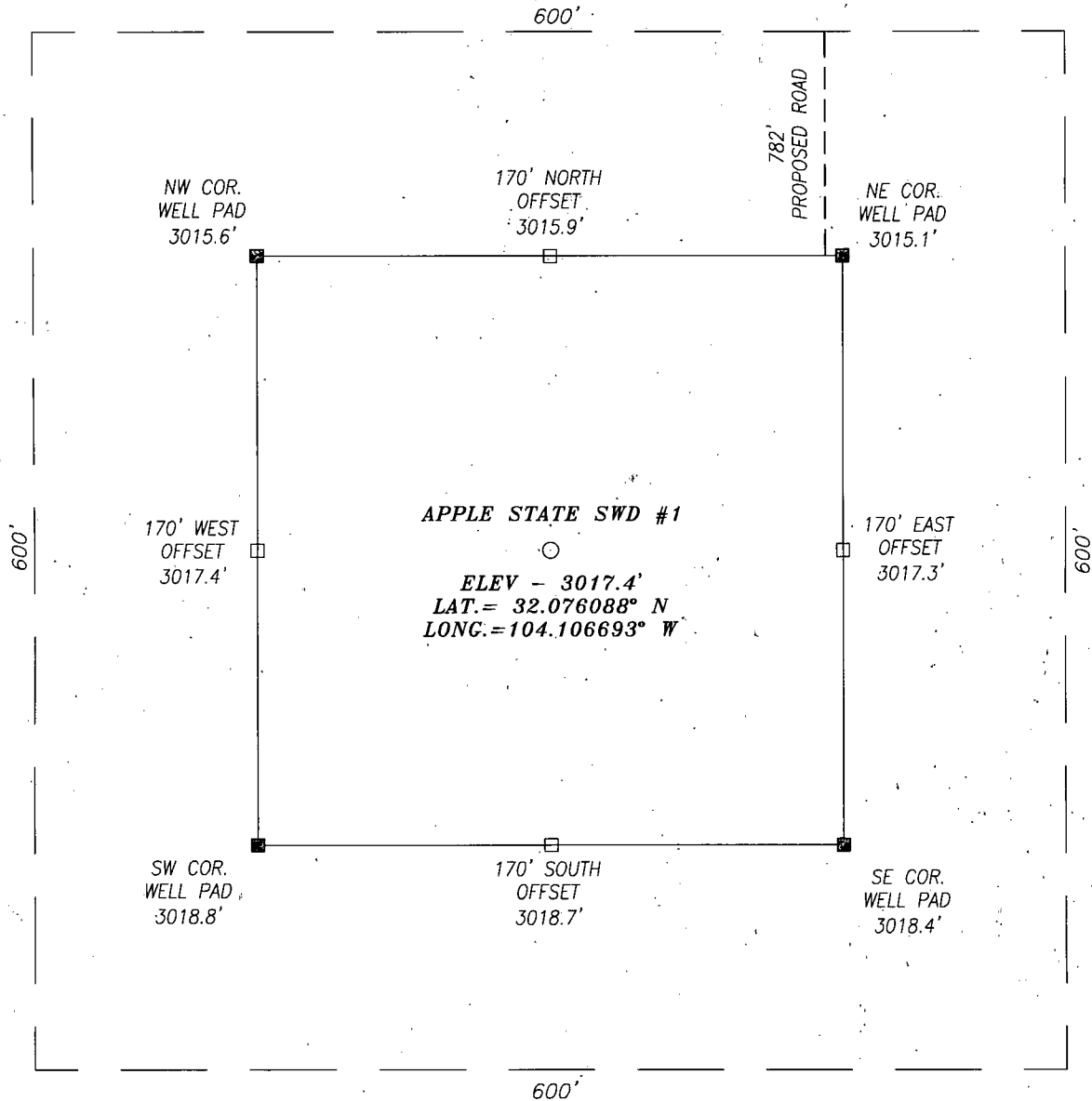
Signature & Seal of Professional Surveyor



Chad H. Brown 11/31/13

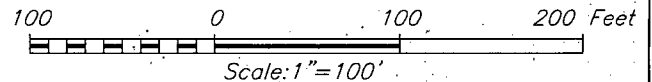
Certificate No. CHAD HARCROW 17777
W.O. # 12-182 DRAWN BY: VD

SECTION 5 , TOWNSHIP 26 SOUTH, RANGE 28 EAST, N.M.P.M.,
EDDY COUNTY NEW MEXICO



DIRECTIONS TO LOCATION

HEADING SOUTH ON HWY 285 TURN RIGHT ON COUNTY RD 724, CALICHE RD. GO APPROX. 2 MILES. TAKE ANOTHER RIGHT ON CALICHE RD. GO 1.1 MILES TURN LEFT. TRAVEL ANOTHER .3 MILES TO PROPOSED RD. TURN LEFT. PROPOSED WELL IS APPROX. 800FT DOWN PROPOSED RD.



HARCROW SURVEYING, LLC
1107 WATSON, ARTESIA, N.M. 88210
PH: (575) 513-2570 FAX: (575) 746-2158
chad_harcrow77@yahoo.com



COG PRODUCTION, LLC

APPLE 5 STATE SWD #1 WELL
LOCATED 990 FEET FROM THE NORTH LINE
AND 1980 FEET FROM THE EAST LINE OF SECTION 5,
TOWNSHIP 26 SOUTH, RANGE 28 EAST, N.M.P.M.,
EDDY COUNTY, NEW MEXICO

SURVEY DATE: 12/12/2012

PAGE: 1 OF 1

DRAFT DATE: 01/03/2012

APPROVED BY: CH

DRAWN BY: VD

FILE: 12-182

This topographic map depicts a region with a proposed road and a specific site. The map includes the following features:

- Proposed Road:** A dashed line labeled "782' PROPOSED ROAD" runs horizontally across the upper portion of the map.
- Apple 5 St SWD #1:** A site labeled "APPLE 5 ST SWD #1" is located in the center-left, near a "5-123" marker.
- East Apple Tank:** A feature labeled "East Apple Tank" is situated to the left of the SWD #1 site.
- Elevation Points:** Numerous points are marked with elevations, including 3009, 3003, 3005, 3006, 3007, 3008, 3009, 3010, 3011, 3012, 3013, 3014, 3015, 3016, 3017, 3018, 3019, 3020, 3021, 3022, 3023, 3024, 3025, 3026, 3027, 3028, 3029, 3030, 3031, 3032, 3033, 3034, 3035, 3036, 3037, 3038, 3039, 3040, 3041, 3042, 3043, 3044, 3045, 3046, 3047, 3048, 3049, 3050, 3051, 3052, 3053, 3054, 3055, 3056, 3057, 3058, 3059, 3060, 3061, 3062, 3063, 3064, 3065, 3066, 3067, 3068, 3069, 3070, 3071, 3072, 3073, 3074, 3075, 3076, 3077, 3078, 3079, 3080, 3081, 3082, 3083, 3084, 3085, 3086, 3087, 3088, 3089, 3090, 3091, 3092, 3093, 3094, 3095, 3096, 3097, 3098, 3099, 3100, 3101, 3102, 3103, 3104, 3105, 3106, 3107, 3108, 3109, 3110, 3111, 3112, 3113, 3114, 3115, 3116, 3117, 3118, 3119, 3120, 3121, 3122, 3123, 3124, 3125, 3126, 3127, 3128, 3129, 3130, 3131, 3132, 3133, 3134, 3135, 3136, 3137, 3138, 3139, 3140, 3141, 3142, 3143, 3144, 3145, 3146, 3147, 3148, 3149, 3150, 3151, 3152, 3153, 3154, 3155, 3156, 3157, 3158, 3159, 3160, 3161, 3162, 3163, 3164, 3165, 3166, 3167, 3168, 3169, 3170, 3171, 3172, 3173, 3174, 3175, 3176, 3177, 3178, 3179, 3180, 3181, 3182, 3183, 3184, 3185, 3186, 3187, 3188, 3189, 3190, 3191, 3192, 3193, 3194, 3195, 3196, 3197, 3198, 3199, 3200, 3201, 3202, 3203, 3204, 3205, 3206, 3207, 3208, 3209, 3210, 3211, 3212, 3213, 3214, 3215, 3216, 3217, 3218, 3219, 3220, 3221, 3222, 3223, 3224, 3225, 3226, 3227, 3228, 3229, 3230, 3231, 3232, 3233, 3234, 3235, 3236, 3237, 3238, 3239, 3240, 3241, 3242, 3243, 3244, 3245, 3246, 3247, 3248, 3249, 3250, 3251, 3252, 3253, 3254, 3255, 3256, 3257, 3258, 3259, 3260, 3261, 3262, 3263, 3264, 3265, 3266, 3267, 3268, 3269, 3270, 3271, 3272, 3273, 3274, 3275, 3276, 3277, 3278, 3279, 3280, 3281, 3282, 3283, 3284, 3285, 3286, 3287, 3288, 3289, 3290, 3291, 3292, 3293, 3294, 3295, 3296, 3297, 3298, 3299, 3300, 3301, 3302, 3303, 3304, 3305, 3306, 3307, 3308, 3309, 3310, 3311, 3312, 3313, 3314, 3315, 3316, 3317, 3318, 3319, 3320, 3321, 3322, 3323, 3324, 3325, 3326, 3327, 3328, 3329, 3330, 3331, 3332, 3333, 3334, 3335, 3336, 3337, 3338, 3339, 3340, 3341, 3342, 3343, 3344, 3345, 3346, 3347, 3348, 3349, 3350, 3351, 3352, 3353, 3354, 3355, 3356, 3357, 3358, 3359, 3360, 3361, 3362, 3363, 3364, 3365, 3366, 3367, 3368, 3369, 3370, 3371, 3372, 3373, 3374, 3375, 3376, 3377, 3378, 3379, 3380, 3381, 3382, 3383, 3384, 3385, 3386, 3387, 3388, 3389, 3390, 3391, 3392, 3393, 3394, 3395, 3396, 3397, 3398, 3399, 3400, 3401, 3402, 3403, 3404, 3405, 3406, 3407, 3408, 3409, 3410, 3411, 3412, 3413, 3414, 3415, 3416, 3417, 3418, 3419, 3420, 3421, 3422, 3423, 3424, 3425, 3426, 3427, 3428, 3429, 3430, 3431, 3432, 3433, 3434, 3435, 3436, 3437, 3438, 3439, 3440, 3441, 3442, 3443, 3444, 3445, 3446, 3447, 3448, 3449, 3450, 3451, 3452, 3453, 3454, 3455, 3456, 3457, 3458, 3459, 3460, 3461, 3462, 3463, 3464, 3465, 3466, 3467, 3468, 3469, 3470, 3471, 3472, 3473, 3474, 3475, 3476, 3477, 3478, 3479, 3480, 3481, 3482, 3483, 3484, 3485, 3486, 3487, 3488, 3489, 3490, 3491, 3492, 3493, 3494, 3495, 3496, 3497, 3498, 3499, 3500, 3501, 3502, 3503, 3504, 3505, 3506, 3507, 3508, 3509, 3510, 3511, 3512, 3513, 3514, 3515, 3516, 3517, 3518, 3519, 3520, 3521, 3522, 3523, 3524, 3525, 3526, 3527, 3528, 3529, 3530, 3531, 3532, 3533, 3534, 3535, 3536, 3537, 3538, 3539, 3540, 3541, 3542, 3543, 3544, 3545, 3546, 3547, 3548, 3549, 3550, 3551, 3552, 3553, 3554, 3555, 3556, 3557, 3558, 3559, 3560, 3561, 3562, 3563, 3564, 3565, 3566, 3567, 3568, 3569, 3570, 3571, 3572, 3573, 3574, 3575, 3576, 3577, 3578, 3579, 3580, 3581, 3582, 3583, 3584, 3585, 3586, 3587, 3588, 3589, 3590, 3591, 3592, 3593, 3594, 3595, 3596, 3597, 3598, 3599, 3600, 3601, 3602, 3603, 3604, 3605, 3606, 3607, 3608, 3609, 3610, 3611, 3612, 3613, 3614, 3615, 3616, 3617, 3618, 3619, 3620, 3621, 3622, 3623, 3624, 3625, 3626, 3627, 3628, 3629, 3630, 3631, 3632, 3633, 3634, 3635, 3636, 3637, 3638, 3639, 3640, 3641, 3642, 3643, 3644, 3645, 3646, 3647, 3648, 3649, 3650, 3651, 3652

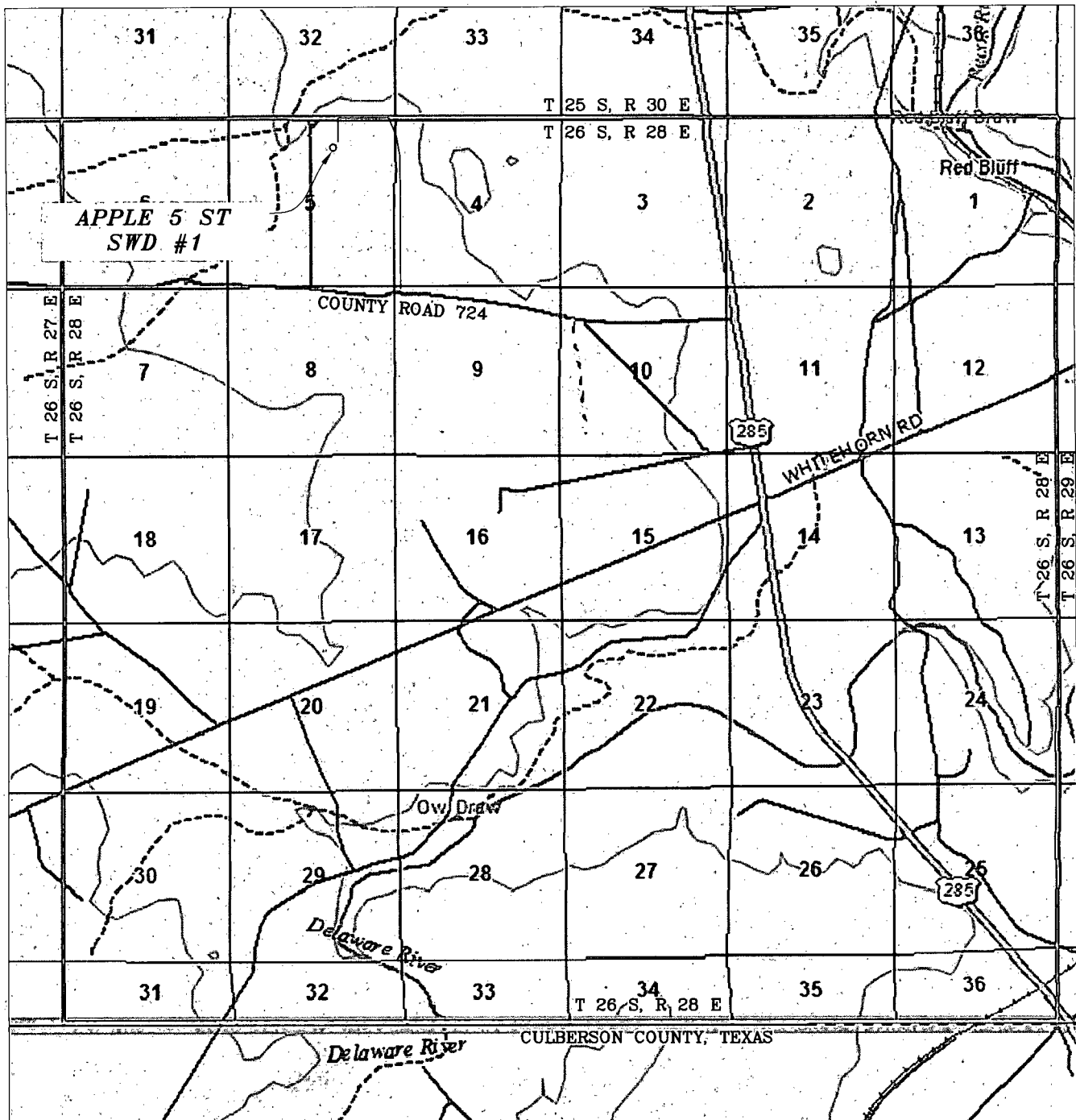
CONTOUR INTERVAL: 10'

HARCROW SURVEYING
1107 WATSON, ARTESIA N.M. 88210
PH: (575) 513-2570
FAX: (575) 746-2808
EST. 2007



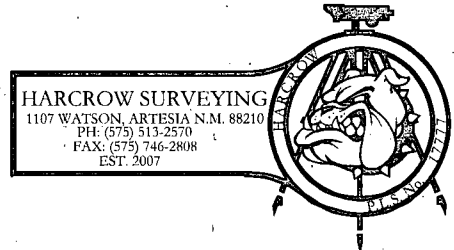
SURVEY DATE: DEC. 12, 2012		PAGE: 1 OF 1
DRAFTING DATE: JAN. 03, 2013		
APPROVED BY: CH	DRAWN BY: DDSI	FILE: 12-182

VICINITY MAP



SEC. 5 TWP. 26-S RGE. 28-E
 SURVEY N.M.P.M.
 COUNTY EDDY STATE NEW MEXICO
 DESCRIPTION 990' FNL & 1980' FEL
 ELEVATION 3017.3'
 OPERATOR COG OPERATING, LLC
 LEASE APPLE 5 ST SWD

SCALE: 1" = 1 MILE



COG OPERATING, LLC		
SURVEY DATE: DEC. 12, 2012	PAGE: .1 OF 1	
DRAFTING DATE: JAN. 03, 2013		
APPROVED BY: CH	DRAWN BY: DDSI	FILE: 12-182

Apple 5 State SWD 1

	Hole Size	Casing	Wt	Depth	Cmt	TOC
Surface	26	20	94	300'	550	0
Intrmd	17.5	13.375	54.5	2300'	1350	0
Prod	12.25	9.625	40	9100'	1350	2100'
Liner	8.75	7	29	14,100'	500	9100'
Disposal	6.125	OH	-	15,400'	-	-

Plan to drill a 26" hole to 300' with Fresh Water. Run 17-1/2", 94#, H-40 csg and cmt to surface. Drill 17-1/2" hole to 2300' with Brine, and run 13-3/8", 54.5#, J-55 and cement to surface. Drill 12-1/4" hole to approximately 9100' with cut brine, and run 9-5/8", 40#, J-55/ P-110 csg and cement to 2100'. Drill 8-3/4" hole to approximately 14,100' with cut brine, run & hang a 7", 29#, P-110 liner and cement back to liner hanger. Drill 6-1/8" hole to approximately 15,400' with cut brine, and leave it open hole for salt water disposal purposes.

Well Control

Type	Pressure	Test	Manufacture
Double Ram	5000	5000	Cameron