

District I
1625 N. French Dr., Hobbs, NM 88240
District II
1301 W. Grand Avenue, Artesia, NM 88210
District III
1000 Rio Brazos Rd., Aztec, NM 87410
District IV
1220 S. St. Francis Dr., Santa Fe, NM 87505

State of New Mexico
Energy, Minerals & Natural Resources Department
OIL CONSERVATION DIVISION
1220 South St. Francis Dr.
Santa Fe, NM 87505

Form C-102
Revised October 15, 2009
Submit one copy to appropriate
District Office
☐ AMENDED REPORT

WELL LOCATION AND ACREAGE DEDICATION PLAT

1 API Number 30-015-40217		2 Pool Code 49622		3 Pool Name PARKWAY; BONE SPRING	
4 Property Code 38555		5 Property Name CORAL PWU "28"			6 Well Number 2H
7 OGRID No. 6137		8 Operator Name DEVON ENERGY PRODUCTION COMPANY, L.P.			9 Elevation 3322.5

10 Surface Location



UL or lot no.	Section	Township	Range	Lot Idn	Feet from the	North/South line	Feet from the	East/West line	County
C	28	19 S	29 E		65	NORTH	1330	WEST	EDDY

11 Bottom Hole Location if Different From Surface

UL or lot no.	Section	Township	Range	Lot Idn	Feet from the	North/South line	Feet from the	East/West line	County
N	28	19 S	29 E		424	SOUTH	1482	WEST	EDDY

12 Dedicated Acres 160	13 Joint or Infill	14 Consolidation Code	15 Order No.
---------------------------	--------------------	-----------------------	--------------

No allowable will be assigned to this completion until all interests have been consolidated or a non-standard unit has been approved by the division.

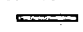

17 OPERATOR CERTIFICATION I hereby certify that the information contained herein is true and complete to the best of my knowledge and belief, and that this organization either owns a working interest or unleased mineral interest in the land including the proposed bottom hole location or has a right to drill this well at this location pursuant to a contract with an owner of such a mineral or working interest, or to a voluntary pooling agreement or a compulsory pooling order heretofore entered by the division. Signature:  Date: 6/3/2013 Printed Name: Ryan Delong, Regulatory Specialist	
18 SURVEYOR CERTIFICATION I hereby certify that the well location shown on this plat was plotted from field notes of actual surveys made by me or under my supervision, and that the same is true and correct to the best of my belief. Date of Survey: MAY 25, 2013 Signature and Seal of Professional Surveyor:  Certificate Number: FILMON F. JARAMILLO, PLS 12797 Survey No. 796A	

HW CORNER SEC. 28
LAT. = 32.6390699°N
LONG. = 104.0883927°W
NMSP EAST (FT)
N = 596311.43
E = 616734.90

SW CORNER SEC. 28
LAT. = 32.6318084°N
LONG. = 104.0883956°W
NMSP EAST (FT)
N = 593669.64
E = 616739.19

SE CORNER SEC. 28
LAT. = 32.6244740°N
LONG. = 104.0713099°W
NMSP EAST (FT)
N = 591013.90
E = 622006.42

NE CORNER SEC. 28
LAT. = 32.6390370°N
LONG. = 104.0712463°W
NMSP EAST (FT)
N = 595312.05
E = 622012.94

PP: 157 FNL & 903 FWL
Project Area: 
Producing Area: 

SURFACE LOCATION
CORAL PWU "28" #2H
LEV. = 3322.5'
LAT. = 32.63887°N (NAD83)
LONG. = 104.088393°W
NMSP EAST (FT)
N = 596243.29
E = 618064.68

BOTTOM OF HOLE
LAT. = 32.6244740°N
LONG. = 104.0713099°W
NMSP EAST (FT)
N = 591013.90
E = 622006.42

424'

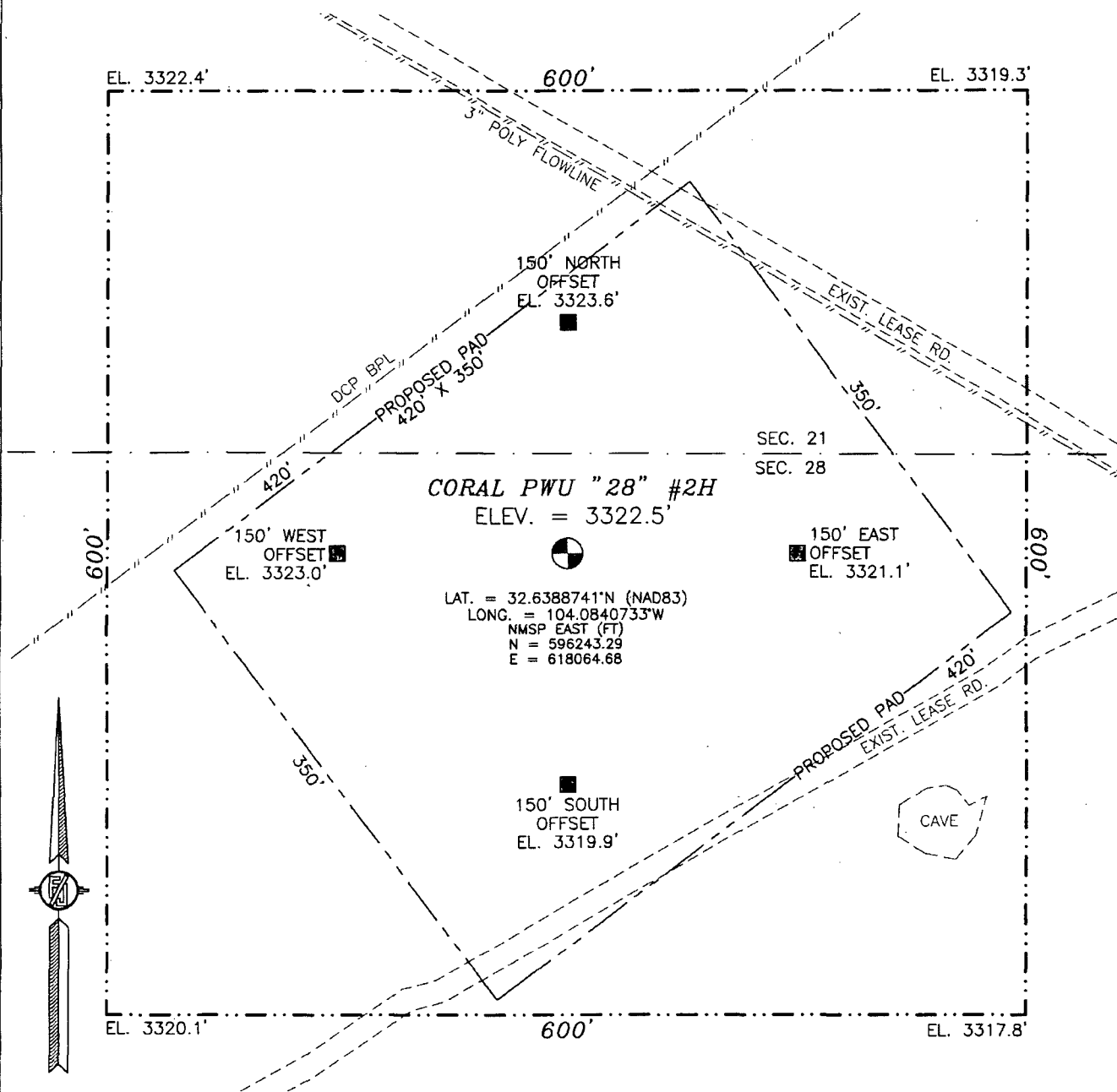
1482'

2639.24 FT
2638.82 FT
2633.59 FT
2633.59 FT
2641.79 FT
2641.91 FT
2641.63 FT
2645.54 FT

500'05'35"E
500'00'05"E
500'00'41"W
500'00'41"W

N89°51'49"W
S89°51'00"W
S89°50'58"E

SECTION 28, TOWNSHIP 19 SOUTH, RANGE 29 EAST, N.M.P.M.
EDDY COUNTY, STATE OF NEW MEXICO



010 50 100 200

SCALE 1" = 100'

DIRECTIONS TO LOCATION

FROM THE INTERSECTION OF CR 235 (CURRY COMB) AND CR 210 (OLD LOCO) GO SOUTHEAST ON CR 235 FOR APPROX. 0.25 OF A MILE, GO SOUTH-SOUTHEAST (AT DEVON PARKWAY UNIT SIGN) AND GO APPROX. 1 MILE. GO WEST-SOUTHWEST FOR APPROX. 0.6 OF A MILE. LOCATION IS APPROX. 200 FT NORTH.

DEVON ENERGY PRODUCTION COMPANY, L.P.

CORAL PWU "28" #2H

LOCATED 65 FT. FROM THE NORTH LINE
AND 1330 FT. FROM THE WEST LINE OF
SECTION 28, TOWNSHIP 19 SOUTH,
RANGE 29 EAST, N.M.P.M.
EDDY COUNTY, STATE OF NEW MEXICO

MAY 25, 2012

SURVEY NO. 796A

MADRON SURVEYING, INC. 301 SOUTH CANAL (575) 234-3341 CARLSBAD, NEW MEXICO

Topographic map of the Coral PWU area. The map shows a grid of elevation points and contour lines. A central square marker is labeled "CORAL PWU #28". A pipeline is shown running diagonally across the map. The map is labeled with numerous elevation points and grid coordinates.

Key features and labels on the map include:

- Central Marker:** CORAL PWU #28 (indicated by a square symbol)
- Pipeline:** A dashed line labeled "PIPELINE" runs diagonally from the bottom left towards the top right.
- Elevation Points:** Numerous points are labeled with values such as 3354, 3352, 3351, 3350, 3349, 3348, 3347, 3346, 3345, 3344, 3343, 3342, 3341, 3340, 3339, 3338, 3337, 3336, 3335, 3334, 3333, 3332, 3331, 3330, 3329, 3328, 3327, 3326, 3325, 3324, 3323, 3322, 3321, 3320, 3319, 3318, 3317, 3316, 3315, 3314, 3313, 3312, 3311, 3310, 3309, 3308, 3307, 3306, 3305, 3304, 3303, 3302, 3301, 3300, 3299, 3298, 3297, 3296, 3295, 3294, 3293, 3292, 3291, 3290, 3289, 3288, 3287, 3286, 3285, 3284, 3283, 3282, 3281, 3280, 3279, 3278, 3277, 3276, 3275, 3274, 3273, 3272, 3271, 3270, 3269, 3268, 3267, 3266, 3265, 3264, 3263, 3262, 3261, 3260, 3259, 3258, 3257, 3256, 3255, 3254, 3253, 3252, 3251, 3250, 3249, 3248, 3247, 3246, 3245, 3244, 3243, 3242, 3241, 3240, 3239, 3238, 3237, 3236, 3235, 3234, 3233, 3232, 3231, 3230, 3229, 3228, 3227, 3226, 3225, 3224, 3223, 3222, 3221, 3220, 3219, 3218, 3217, 3216, 3215, 3214, 3213, 3212, 3211, 3210, 3209, 3208, 3207, 3206, 3205, 3204, 3203, 3202, 3201, 3200, 3199, 3198, 3197, 3196, 3195, 3194, 3193, 3192, 3191, 3190, 3189, 3188, 3187, 3186, 3185, 3184, 3183, 3182, 3181, 3180, 3179, 3178, 3177, 3176, 3175, 3174, 3173, 3172, 3171, 3170, 3169, 3168, 3167, 3166, 3165, 3164, 3163, 3162, 3161, 3160, 3159, 3158, 3157, 3156, 3155, 3154, 3153, 3152, 3151, 3150, 3149, 3148, 3147, 3146, 3145, 3144, 3143, 3142, 3141, 3140, 3139, 3138, 3137, 3136, 3135, 3134, 3133, 3132, 3131, 3130, 3129, 3128, 3127, 3126, 3125, 3124, 3123, 3122, 3121, 3120, 3119, 3118, 3117, 3116, 3115, 3114, 3113, 3112, 3111, 3110, 3109, 3108, 3107, 3106, 3105, 3104, 3103, 3102, 3101, 3100, 3099, 3098, 3097, 3096, 3095, 3094, 3093, 3092, 3091, 3090, 3089, 3088, 3087, 3086, 3085, 3084, 3083, 3082, 3081, 3080, 3079, 3078, 3077, 3076, 3075, 3074, 3073, 3072, 3071, 3070, 3069, 3068, 3067, 3066, 3065, 3064, 3063, 3062, 3061, 3060, 3059, 3058, 3057, 3056, 3055, 3054, 3053, 3052, 3051, 3050, 3049, 3048, 3047, 3046, 3045, 3044, 3043, 3042, 3041, 3040, 3039, 3038, 3037, 3036, 3035, 3034, 3033, 3032, 3031, 3030, 3029, 3028, 3027, 3026, 3025, 3024, 3023, 3022, 3021, 3020, 3019, 3018, 3017, 3016, 3015, 3014, 3013, 3012, 3011, 3010, 3009, 3008, 3007, 3006, 3005, 3004, 3003, 3002, 3001, 3000, 2999, 2998, 2997, 2996, 2995, 2994, 2993, 2992, 2991, 2990, 2989, 2988, 2987, 2986, 2985, 2984, 2983, 2982, 2981, 2980, 2979, 2978, 2977, 2976, 2975, 2974, 2973, 2972, 2971, 2970, 2969, 2968, 2967, 2966, 2965, 2964, 2963, 2962, 2961, 2960, 2959, 2958, 2957, 2956, 2955, 2954, 2953, 2952, 2951, 2950, 2949, 2948, 2947, 2946, 2945, 2944, 2943, 2942, 2941, 2940, 2939, 2938, 2937, 2936, 2935, 2934, 2933, 2932, 2931, 2930, 2929, 2928, 2927, 2926, 2925, 2924, 2923, 2922, 2921, 2920, 2919, 2918, 2917, 2916, 2915, 2914, 2913, 2912, 2911, 2910, 2909, 2908, 2907, 2906, 2905, 2904, 2903, 2902, 2901, 2900, 2899, 2898, 2897, 2896, 2895, 2894, 2893, 2892, 2891, 2890, 2889, 2888, 2887, 2886, 2885, 2884, 2883, 2882, 2881, 2880, 2879, 2878, 2877, 2876, 2875, 2874, 2873, 2872, 2871, 2870, 2869, 2868, 2867, 2866, 2865, 2864, 2863, 2862, 2861, 2860, 2859, 2858, 2857, 2856, 2855, 2854, 2853, 2852, 2851, 2850, 2849, 2848, 2847, 2846, 2845, 2844, 2843, 2842, 2841, 2840, 2839, 2838, 2837, 2836, 2835, 2834, 2833, 2832, 2831, 2830, 2829, 2828, 2827, 2826, 2825, 2824, 2823, 2822, 2821, 2820, 2819, 2818, 2817, 2816, 2815, 2814, 2813, 2812, 2811, 2810, 2809, 2808, 2807, 2806, 2805, 2804, 2803, 2802, 2801, 2800, 2799, 2798, 2797, 2796, 2795, 2794, 2793, 2792, 2791, 2790, 2789, 2788, 2787, 2786, 2785, 2784, 2783, 2782, 2781, 2780, 2779, 2778, 2777, 2776, 2775, 2774, 2773, 2772, 2771, 2770, 2769, 2768, 2767, 2766, 2765, 2764, 2763, 2762, 2761, 2760, 2759, 2758, 2757, 2756, 2755, 2754, 2753, 2752, 2751, 2750, 2749, 2748, 2747, 2746, 2745, 2744, 2743, 2742, 2741, 2740, 2739, 2738, 2737, 2736, 2735, 2734, 2733, 2732, 2731, 2730, 2729, 2728, 2727, 2726, 2725, 2724, 2723, 2722, 2721, 2720, 2719, 2718, 2717, 2716, 2715, 2714, 2713, 2712, 2711, 2710, 2709, 27

NOT TO SCALE

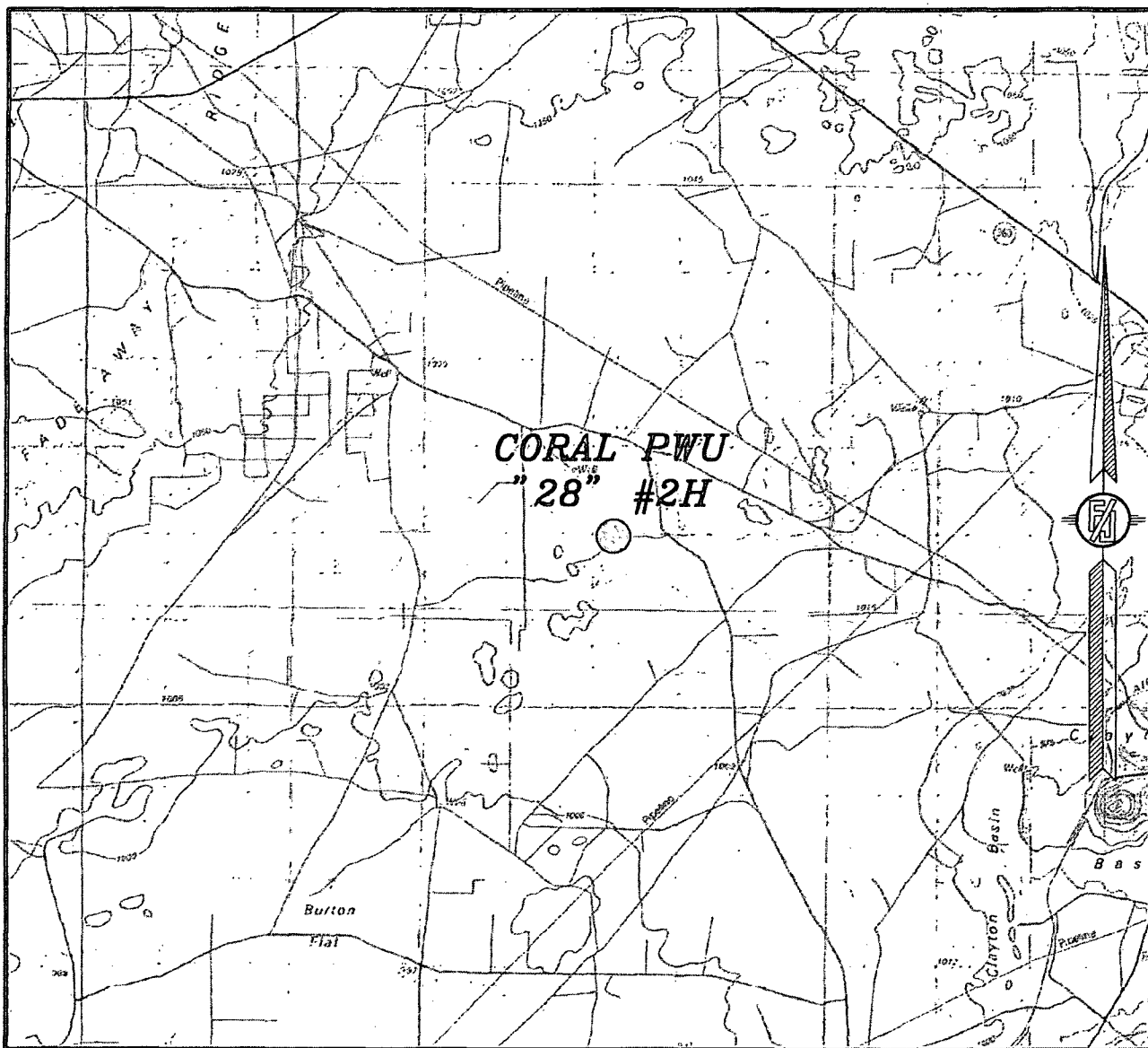
LOCATED 65 FT. FROM THE "NORTH LINE
AND 1330 FT. FROM THE WEST LINE OF
SECTION 28, TOWNSHIP 19 SOUTH,
RANGE 29 EAST, N.M.P.M.
EDDY COUNTY, STATE OF NEW MEXICO

SURVEY NO. 796A

MADRON SURVEYING, INC. 301 SOUTH CANAL CARLSBAD, NEW MEXICO
(575) 234-3341

301 SOUTH CANAL
(575) 234-3341

SECTION 28, TOWNSHIP 19 SOUTH, RANGE 29 EAST, N.M.P.M.
EDDY COUNTY, STATE OF NEW MEXICO
VICINITY MAP



NOT TO SCALE

DEVON ENERGY PRODUCTION COMPANY, L.P.

CORAL PWU "28" #2H

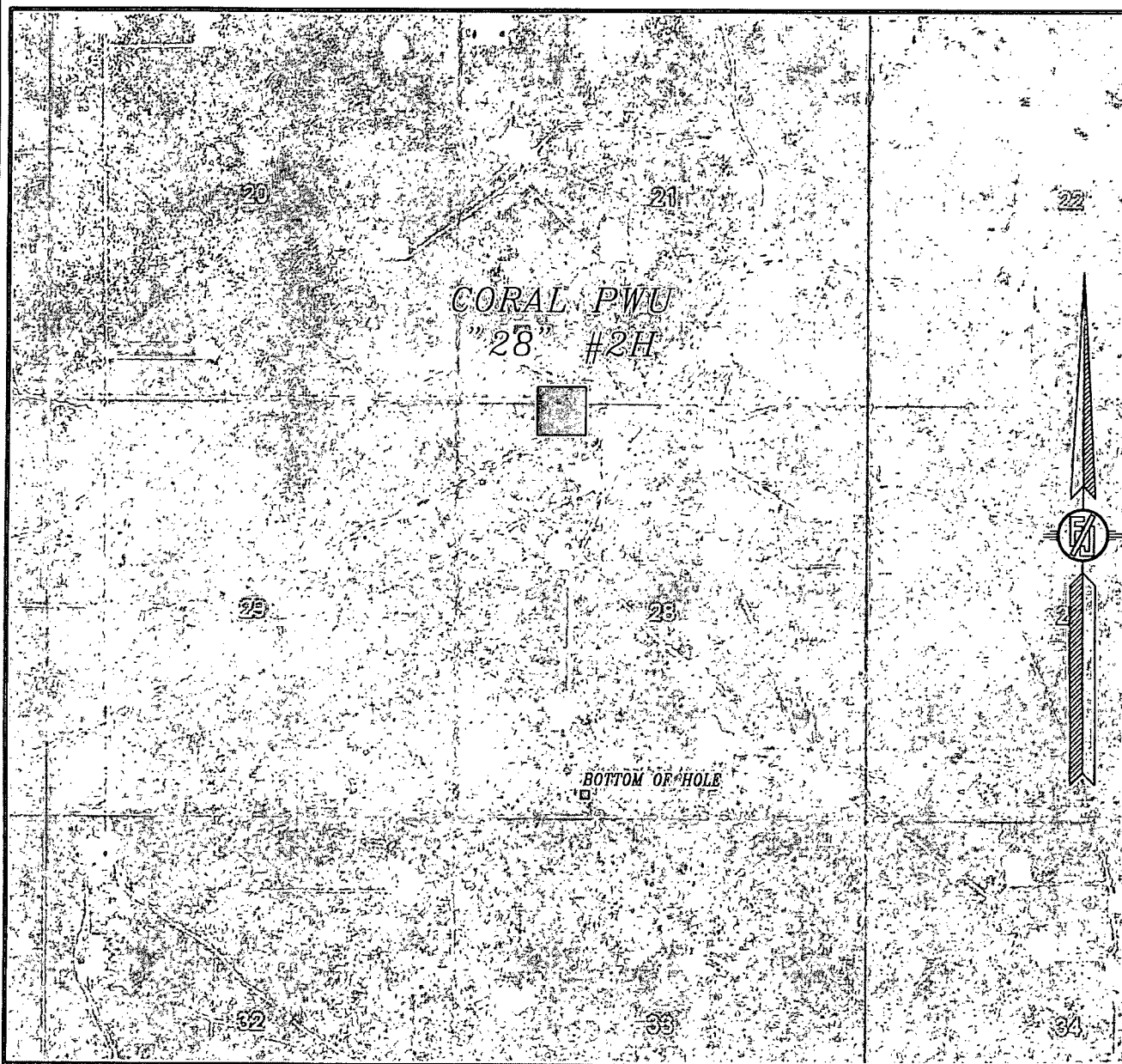
LOCATED 65 FT. FROM THE NORTH LINE
AND 1330 FT. FROM THE WEST LINE OF
SECTION 28, TOWNSHIP 19 SOUTH,
RANGE 29 EAST, N.M.P.M.
EDDY COUNTY, STATE OF NEW MEXICO

MAY 25, 2012

SURVEY NO. 796A

MADRON SURVEYING, INC. 301 SOUTH CANAL (575) 234-3341 CARLSBAD, NEW MEXICO

SECTION 28, TOWNSHIP 19 SOUTH, RANGE 29 EAST, N.M.P.M.
EDDY COUNTY, STATE OF NEW MEXICO
AERIAL PHOTO



NOT TO SCALE
AERIAL PHOTO:
GOOGLE EARTH
JUNE, 2011

DEVON ENERGY PRODUCTION COMPANY, L.P.

CORAL PWU "28" #2H

LOCATED 65 FT. FROM THE NORTH LINE
AND 1330 FT. FROM THE WEST LINE OF
SECTION 28, TOWNSHIP 19 SOUTH,
RANGE 29 EAST, N.M.P.M.
EDDY COUNTY, STATE OF NEW MEXICO

MAY 25, 2012

SURVEY NO. 796A

MADRON SURVEYING, INC. 301 SOUTH CANAL CARLSBAD, NEW MEXICO
(575) 234-3341