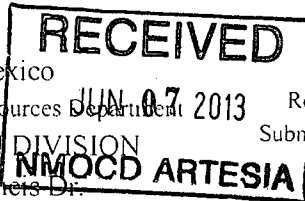


District I  
1625 N. French Dr., Hobbs, NM 88240  
District II  
1301 W. Grand Avenue, Artesia, NM 88210  
District III  
1000 Rio Brazos Rd., Aztec, NM 87410  
District IV  
1220 S. St. Francis Dr., Santa Fe, NM 87505

State of New Mexico  
Energy, Minerals & Natural Resources Department  
OIL CONSERVATION DIVISION  
1220 South St. Francis Dr.  
Santa Fe, NM 87505



Form C-102  
Revised October 15, 2009  
Submit one copy to appropriate  
District Office  
☒ AMENDED REPORT

### WELL LOCATION AND ACREAGE DEDICATION PLAT

<sup>1</sup> API Number 30-015-40514		<sup>2</sup> Pool Code 55510	<sup>3</sup> Pool Name Scanlon Draw; Bone Spring
<sup>4</sup> Property Code 38568	<sup>5</sup> Property Name ONYX PWU "29"		<sup>6</sup> Well Number 6H
<sup>7</sup> OGRID No. 6137	<sup>8</sup> Operator Name DEVON ENERGY PRODUCTION COMPANY, L.P.		<sup>9</sup> Elevation 3314.1

#### <sup>10</sup> Surface Location

UL or lot no.	Section	Township	Range	Lot Idn	Feet from the	North/South line	Feet from the	East/West line	County
H	29	19 S	29 E		1550	NORTH	50	EAST	EDDY

#### <sup>11</sup> Bottom Hole Location If Different From Surface

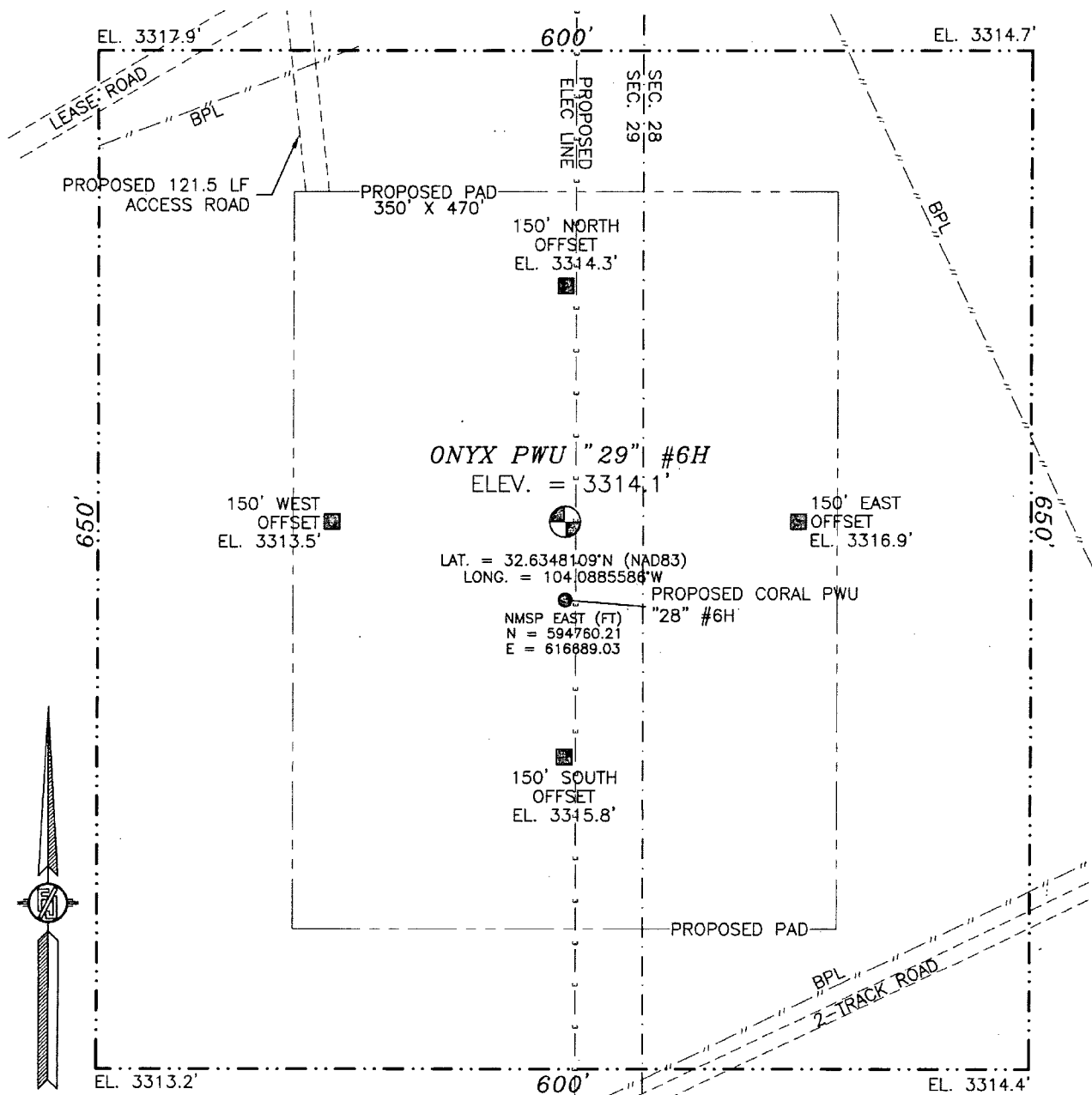
UL or lot no.	Section	Township	Range	Lot Idn	Feet from the	North/South line	Feet from the	East/West line	County
E	29	19 S	29 E		1681	NORTH	392	WEST	EDDY

<sup>12</sup> Dedicated Acres 160	<sup>13</sup> Joint or Infill	<sup>14</sup> Consolidation Code	<sup>15</sup> Order No.
--------------------------------------	-------------------------------	----------------------------------	-------------------------

No allowable will be assigned to this completion until all interests have been consolidated or a non-standard unit has been approved by the division.

<p>N89°49'44"W 2654.06 FT</p> <p>N89°57'47"W 2643.91 FT</p> <p>SW CORNER SEC. 29 LAT. = 32.6391287°N LONG. = 104.1055995°W NMSP EAST (FT) N = 596319.79 E = 611438.58</p> <p>SQ CORNER SEC. 29 LAT. = 32.6390910°N LONG. = 104.0969797°W NMSP EAST (FT) N = 596311.87 E = 614092.63</p> <p>NE CORNER SEC. 29 LAT. = 32.6390699°N LONG. = 104.0883927°W NMSP EAST (FT) N = 596310.15 E = 616736.54</p>			<p><sup>17</sup> OPERATOR CERTIFICATION</p> <p>I hereby certify that the information contained herein is true and complete to the best of my knowledge and belief, and that this organization either owns a working interest or unleased mineral interest in the land including the proposed bottom hole location or has a right to drill this well at this location pursuant to a contract with an owner of such a mineral or working interest, or to a voluntary pooling agreement or a compulsory pooling order heretofore entered by the division.</p> <p>Signature:  Date: 6/3/2013</p> <p>Printed Name: Ryan Delong, Regulatory Specialist</p>		
<p>500'13.43'E 2644.11 FT</p> <p>392' BOTTOM OF HOLE</p> <p>1681' BOTTOM OF HOLE</p> <p>PP: 1550 FNL &amp; 50 FEL</p> <p>Project Area: </p> <p>Producing Area: </p> <p>SW CORNER SEC. 29 LAT. = 32.6245985°N LONG. = 104.1055679°W NMSP EAST (FT) N = 591031.62 E = 611459.69</p> <p>SQ CORNER SEC. 29 LAT. = 32.6245766°N LONG. = 104.0969987°W NMSP EAST (FT) N = 591030.15 E = 614098.52</p> <p>SE CORNER SEC. 29 LAT. = 32.6245465°N LONG. = 104.0884131°W NMSP EAST (FT) N = 591025.17 E = 616740.89</p> <p>589°58'05"E 2638.83 FT</p> <p>589°53'32"E 2642.38 FT</p>			<p><sup>18</sup> SURVEYOR CERTIFICATION</p> <p>I hereby certify that the well location shown on this plat was plotted from field notes of actual surveys made by me or under my supervision, and that the same is true and correct to the best of my belief.</p> <p>MARCH 15, 2012</p> <p>Date of Survey</p> <p>Signature and Seal of Professional Surveyor: </p> <p>Certificate Number: FILMON F. JARAMILLO, PLS 12797</p> <p>SURVEY NO. 949</p>		

SECTION 29, TOWNSHIP 19 SOUTH, RANGE 29 EAST, N.M.P.M.  
EDDY COUNTY, STATE OF NEW MEXICO



010 50 100 200

SCALE 1" = 100'

**DIRECTIONS TO LOCATION**

FROM THE INTERSECTION OF Cr 210 (OLD LOCO) AND Cr 235 (CURRY COMB) GO NORTHWEST ON Cr 235 FOR APPROXIMATE 1.6 MILES. TURN SOUTH ON LEASE ROAD (YELLOW CATTLE GUARD) AND GO SOUTH APPROXIMATE 1.8 MILES. GO EAST-NORTHEAST APPROXIMATE 1.2 MILES. LOCATION IS APPROXIMATE 373 FT SOUTHEAST.

DEVON ENERGY PRODUCTION COMPANY, L.P.

**ONYX PWU "29" #6H**

LOCATED 1550 FT. FROM THE NORTH LINE  
AND 50 FT. FROM THE EAST LINE OF

SECTION 29, TOWNSHIP 19 SOUTH,  
RANGE 29 EAST, N.M.P.M.

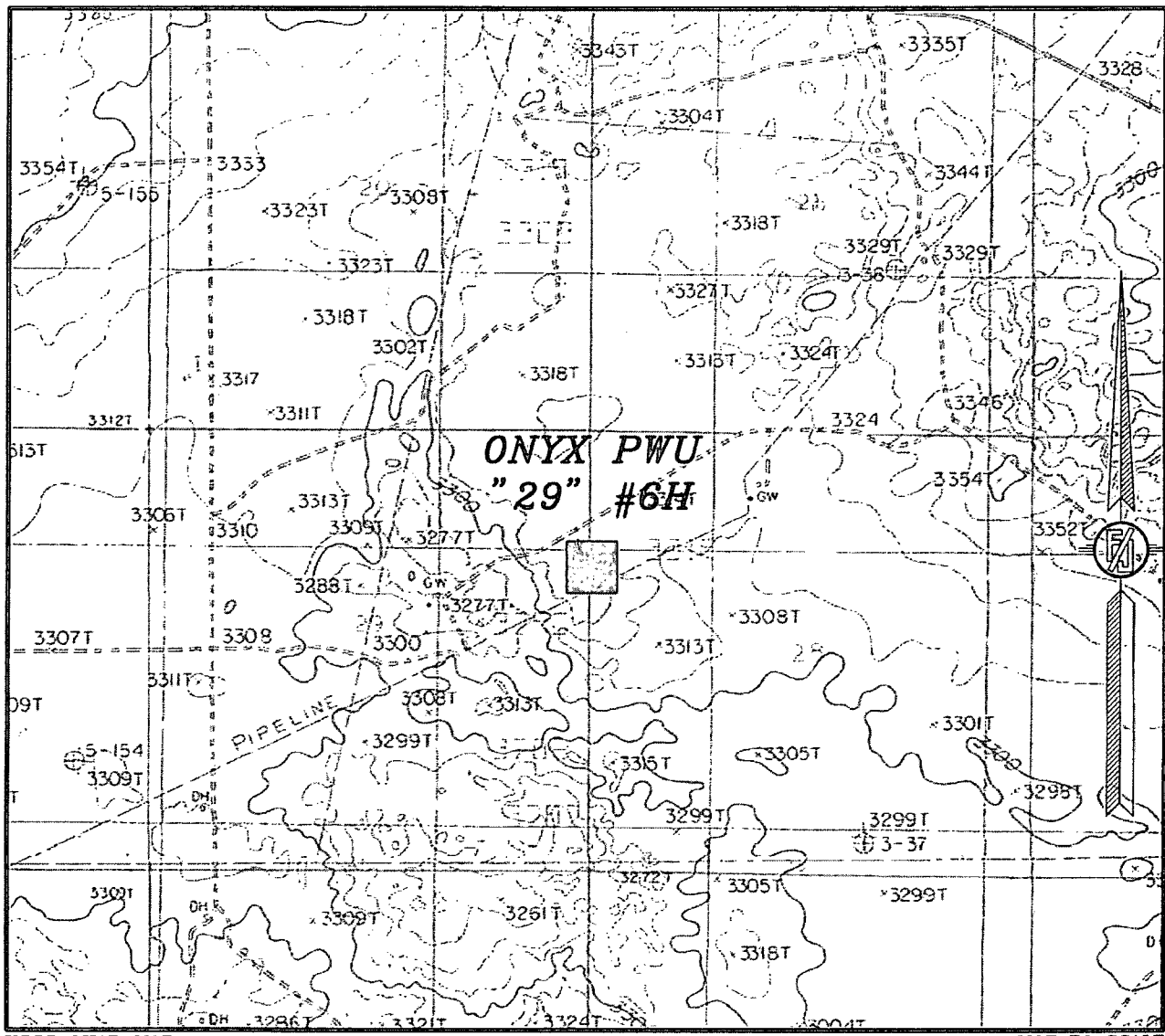
EDDY COUNTY, STATE OF NEW MEXICO

MARCH 24, 2012

SURVEY NO. 949

MADRON SURVEYING, INC. 301 SOUTH CANAL (575) 234-3341 CARLSBAD, NEW MEXICO

SECTION 29, TOWNSHIP 19 SOUTH, RANGE 29 EAST, N.M.P.M.  
 EDDY COUNTY, STATE OF NEW MEXICO  
 LOCATION VERIFICATION MAP



USGS QUAD MAP:  
 ILLINOIS CAMP NE

NOT TO SCALE

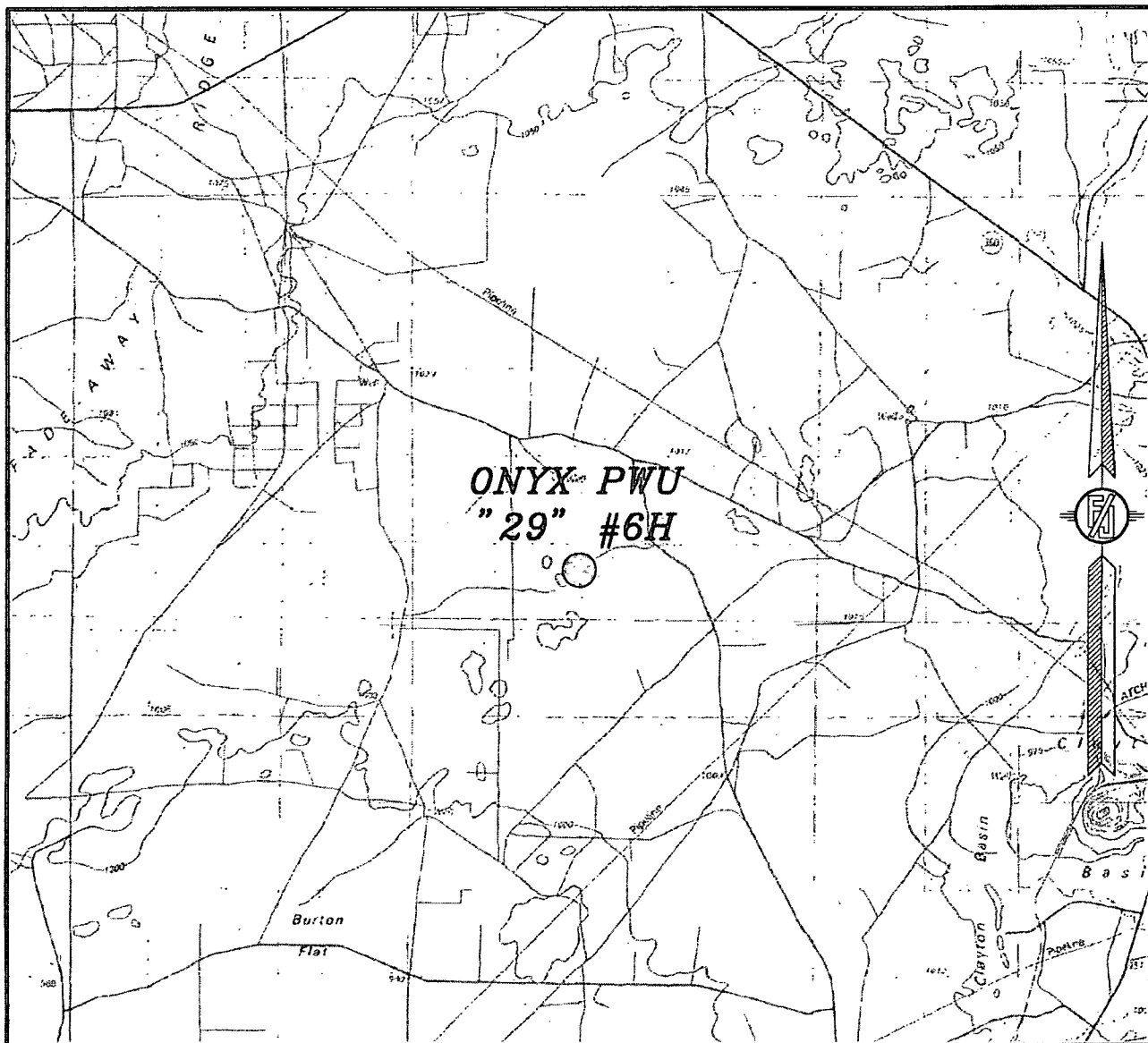
DEVON ENERGY PRODUCTION COMPANY, L.P.  
**ONYX PWU "29" #6H**  
 LOCATED 1550 FT. FROM THE NORTH LINE  
 AND 50 FT. FROM THE EAST LINE OF  
 SECTION 29, TOWNSHIP 19 SOUTH,  
 RANGE 29 EAST, N.M.P.M.  
 EDDY COUNTY, STATE OF NEW MEXICO

MARCH 24, 2012

SURVEY NO. 949

MADRON SURVEYING, INC. 301 SOUTH CANAL CARLSBAD, NEW MEXICO  
 (575) 234-3341

SECTION 29, TOWNSHIP 19 SOUTH, RANGE 29 EAST, N.M.P.M.  
EDDY COUNTY, STATE OF NEW MEXICO  
VICINITY MAP



NOT TO SCALE

DEVON ENERGY PRODUCTION COMPANY, L.P.

**ONYX PWU "29" #6H**

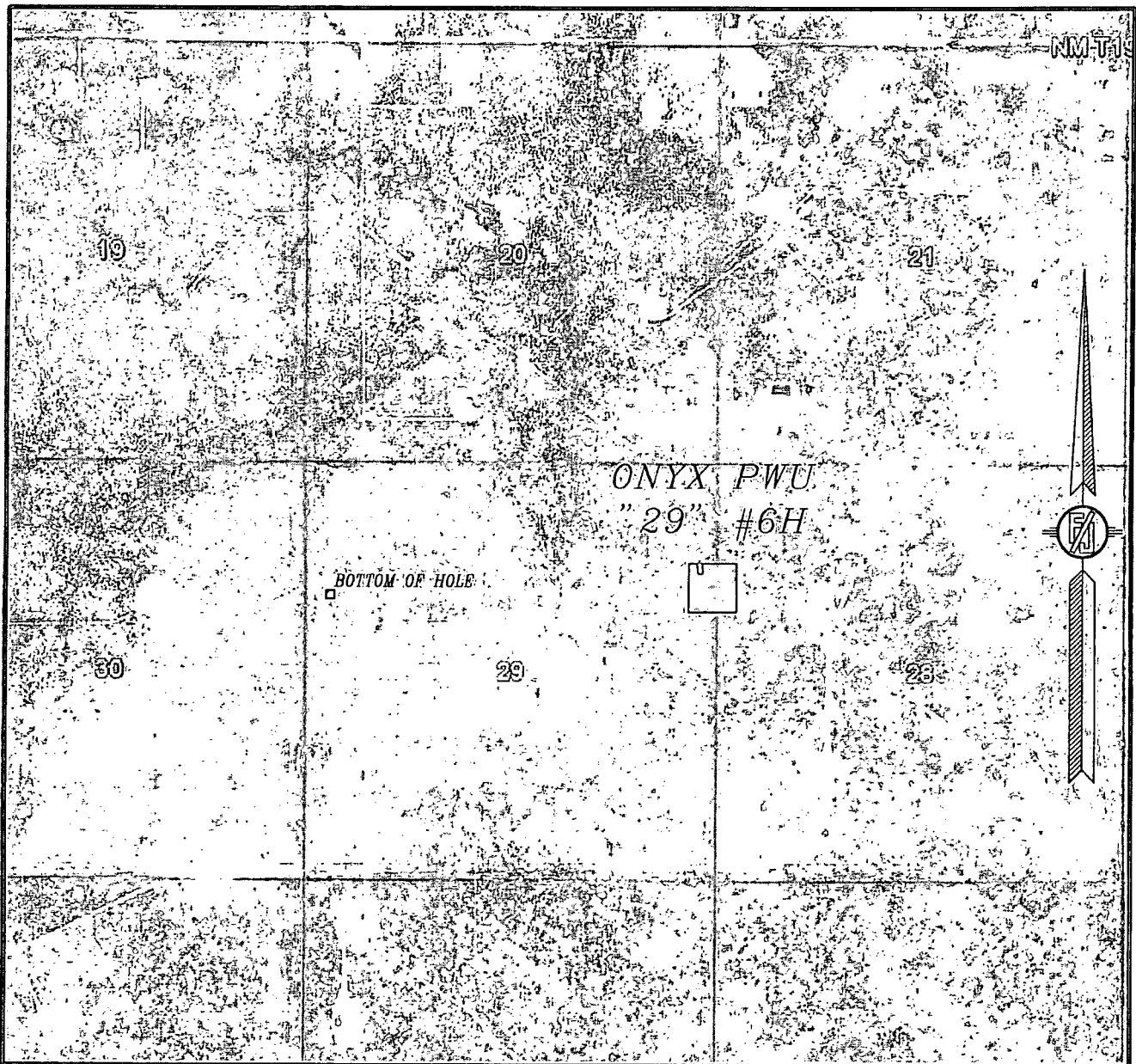
LOCATED 1550 FT. FROM THE NORTH LINE  
AND 50 FT. FROM THE EAST LINE OF  
SECTION 29, TOWNSHIP 19 SOUTH,  
RANGE 29 EAST, N.M.P.M.  
EDDY COUNTY, STATE OF NEW MEXICO

MARCH 24, 2012

SURVEY NO. 949

MADRON SURVEYING, INC. 301 SOUTH CANAL (575) 234-3341 CARLSBAD, NEW MEXICO

SECTION 29, TOWNSHIP 19 SOUTH, RANGE 29 EAST, N.M.P.M.  
EDDY COUNTY, STATE OF NEW MEXICO  
AERIAL PHOTO



NOT TO SCALE  
AERIAL PHOTO:  
GOOGLE EARTH  
JUNE, 2011

DEVON ENERGY PRODUCTION COMPANY, L.P.

ONYX PWU "29" #6H

LOCATED 1550 FT. FROM THE NORTH LINE  
AND 50 FT. FROM THE EAST LINE OF  
SECTION 29, TOWNSHIP 19 SOUTH,  
RANGE 29 EAST, N.M.P.M.  
EDDY COUNTY, STATE OF NEW MEXICO

MARCH 24, 2012

SURVEY NO. 949

MADRON SURVEYING, INC. 301 SOUTH CANAL (575) 234-3341 CARLSBAD, NEW MEXICO