

District I
1625 N. French Dr., Hobbs, NM 88240
Phone: (575) 393-6161 Fax: (575) 393-0720
District II
811 S. First St., Artesia, NM 88210
Phone: (575) 748-1283 Fax: (575) 748-9720
District III
1000 Rio Brazos Road, Aztec, NM 87410
Phone: (505) 334-6178 Fax: (505) 334-6170
District IV
1220 S. St. Francis Dr., Santa Fe, NM 87505
Phone: (505) 476-3460 Fax: (505) 476-3462

State of New Mexico
Energy, Minerals & Natural Resources Department
OIL CONSERVATION DIVISION
1220 South St. Francis Dr.
Santa Fe, NM 87505

Form C-102

Revised August 1, 2011

Submit one copy to appropriate

District Office

RECEIVED

JUN 21 2013

☐ AMENDED REPORT

NMOCD ARTESIA

WELL LOCATION AND ACREAGE DEDICATION PLAT

¹ API Number 30-015-40369	² Pool Code 30215	³ Pool Name Hay Hollow; Bone Spring
⁴ Property Code 308269	⁵ Property Name WAY SOUTH STATE COM	
⁷ OGRID No. 229137	⁸ Operator Name COG OPERATING, LLC	
		⁶ Well Number 3H
		⁹ Elevation 3066'

¹⁰ Surface Location

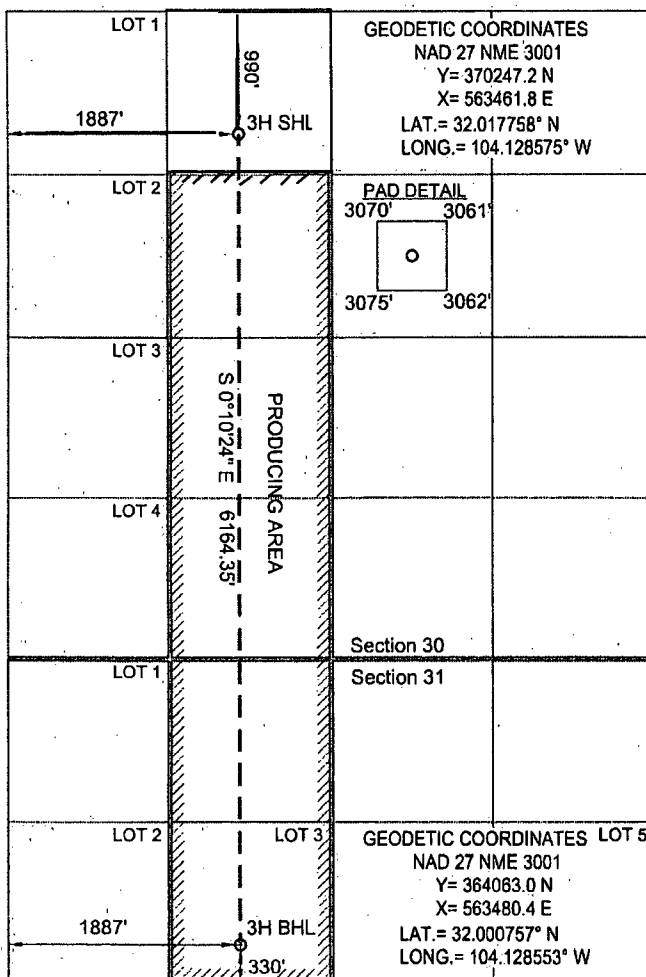
UL or lot no.	Section	Township	Range	Lot Idn	Feet from the	North/South line	Feet from the	East/West line	County
C	30	26S	28E		990'	NORTH	1887'	WEST	EDDY

¹¹ Bottom Hole Location If Different From Surface

UL or lot no.	Section	Township	Range	Lot Idn	Feet from the	North/South line	Feet from the	East/West line	County
3	31	26S	28E		330'	SOUTH	1887'	WEST	EDDY

¹² Dedicated Acres 183.89	¹³ Joint or Infill	¹⁴ Consolidation Code	¹⁵ Order No.
---	-------------------------------	----------------------------------	-------------------------

No allowable will be assigned to this completion until all interests have been consolidated or a non-standard unit has been approved by the division.



¹⁷ OPERATOR CERTIFICATION	
I hereby certify that the information contained herein is true and complete to the best of my knowledge and belief, and that this organization either owns a working interest or an undivided mineral interest in the land including the proposed bottom hole location or has a right to drill this well at this location pursuant to a contract with an owner of such a mineral or working interest, or to a voluntary pooling agreement or a compulsory pooling order heretofore entered by the division.	
Signature <i>Maite Reyes</i>	Date 6-21-13
Printed Name MAITE REYES	
E-mail Address mreyes1@concho.com	
¹⁸ SURVEYOR CERTIFICATION	
I hereby certify that the well location shown on this plat was plotted from field notes of actual surveys made by me or under my supervision, and that the same is true and correct to the best of my belief.	
Date of Survey MAY 30, 2012	
Signature and Seal of Professional Surveyor <i>Jeffrey E. Hudson</i>	
Certificate Number JEFFERY E. HUDSON PLS#20559	