

## District I

1625 N. French Dr., Hobbs, NM 88240

## District II

1301 W. Grand Avenue, Artesia, NM 88210

## District III

1000 Rio Brazos Rd., Aztec, NM 87401

## District IV

1220 S. St. Francis Dr., Santa Fe, NM 87505

RECEIVED

JUN 17 2013

NMOCD ARTESIA

State of New Mexico

Energy, Minerals &amp; Natural Resources Department

OIL CONSERVATION DIVISION

1220 South St. Francis Dr.

Santa Fe, NM 87505

Form C-102

Revised October 15, 2009

Submit one copy to appropriate

District Office

☐ AMENDED REPORT

## WELL LOCATION AND ACREAGE DEDICATION PLAT

<sup>1</sup> API Number 30-015-40592	<sup>2</sup> Pool Code 49622	<sup>3</sup> Pool Name Parkway; Bone Spring
<sup>4</sup> Property Code 38555	<sup>5</sup> Property Name CORAL PWU "28"	<sup>6</sup> Well Number 7H
<sup>7</sup> OGRID No. 6137	<sup>8</sup> Operator Name DEVON ENERGY PRODUCTION COMPANY, L.P.	<sup>9</sup> Elevation 3309.6

<sup>10</sup> Surface Location

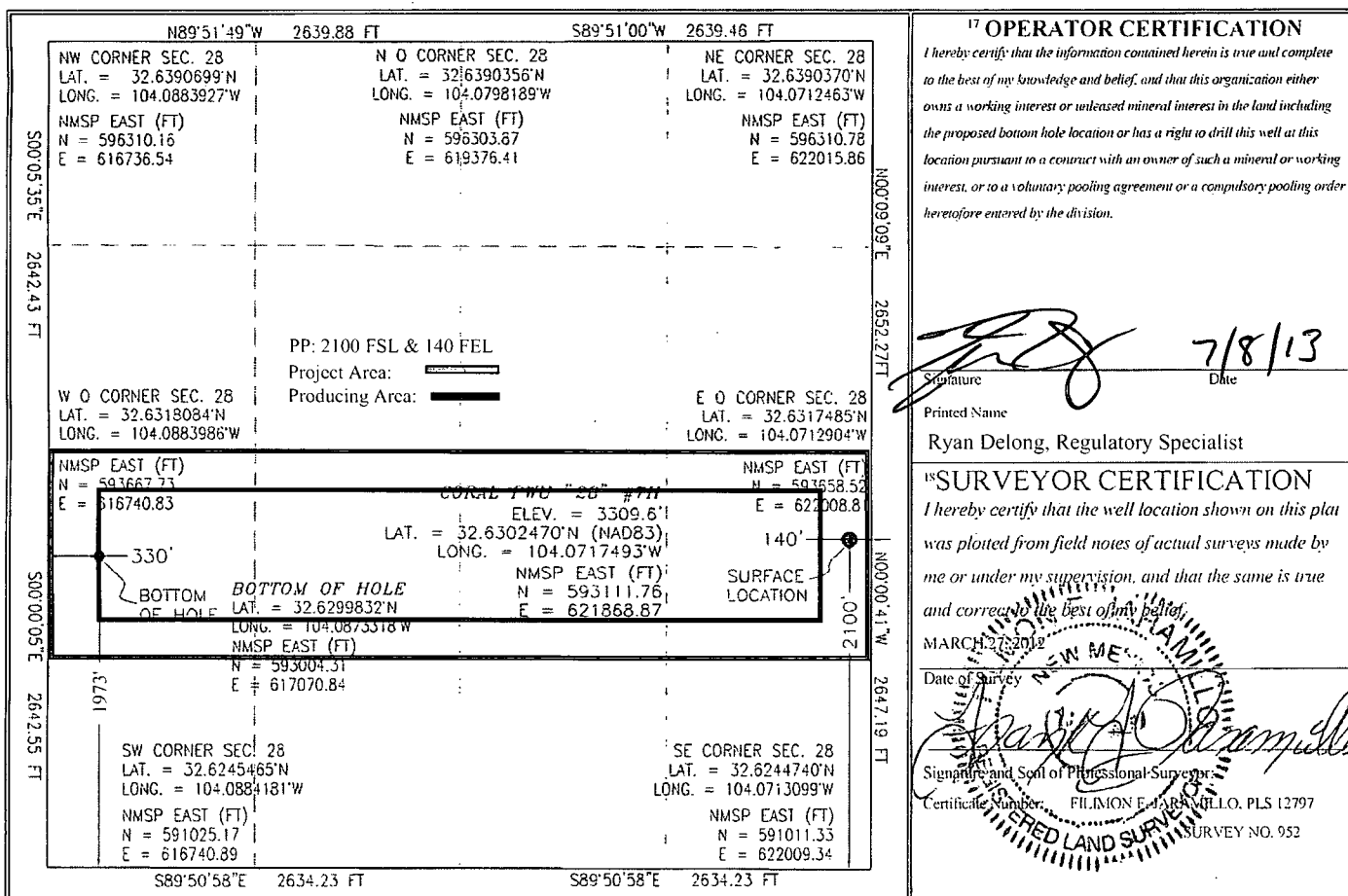
UL or lot no.	Section	Township	Range	Lot Idn	Feet from the	North/South line	Feet from the	East/West line	County
I	28	19 S	29 E		2100	SOUTH	140	EAST	EDDY

<sup>11</sup> Bottom Hole Location If Different From Surface

UL or lot no.	Section	Township	Range	Lot Idn	Feet from the	North/South line	Feet from the	East/West line	County
L	28	19 S	29 E		1973	SOUTH	330	WEST	EDDY

<sup>12</sup> Dedicated Acres 160	<sup>13</sup> Joint or Infill	<sup>14</sup> Consolidation Code	<sup>15</sup> Order No.
--------------------------------------	-------------------------------	----------------------------------	-------------------------

No allowable will be assigned to this completion until all interests have been consolidated or a non-standard unit has been approved by the division.

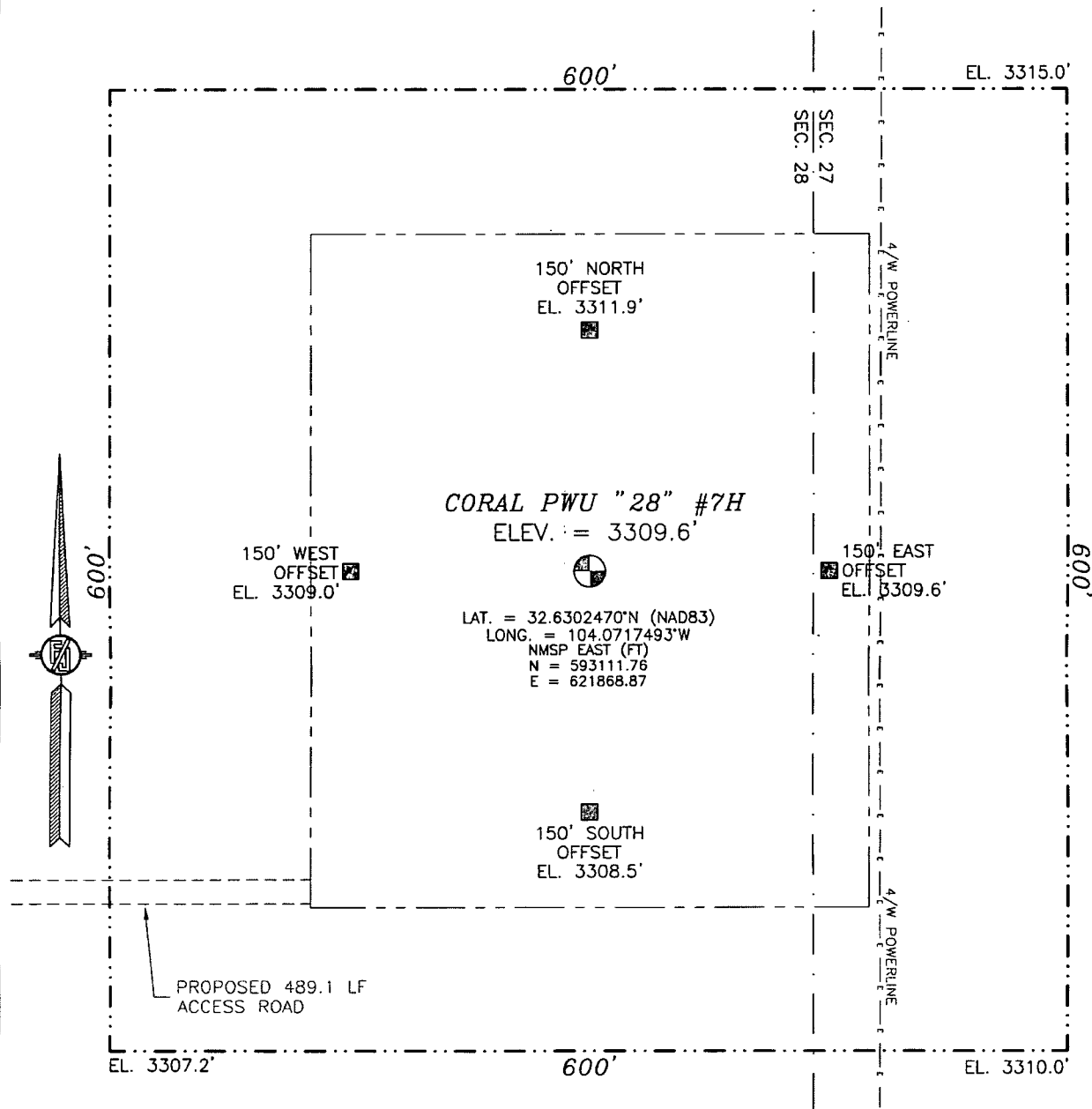


RECEIVED

JUL 09 2013

NMOCD ARTESIA

SECTION 28, TOWNSHIP 19 SOUTH, RANGE 29 EAST, N.M.P.M.  
EDDY COUNTY, STATE OF NEW MEXICO



010 50 100 200  
SCALE 1" = 100'

DIRECTIONS TO LOCATION

FROM THE INTERSECTION OF Cr 210 (OLD LOCO) AND Cr 235  
(CURRY COMB) GO NORTHWEST ON Cr 235 FOR APPROX. 1.6 MILES.  
GO SOUTH ON LEASE ROAD (YELLOW CATTLE GUARD) FOR APPROX.  
1.8 MILES. GO EAST-NORTHEAST ON LEASE ROAD FOR APPROX. 1.6  
MILES. GO SOUTH-SOUTHWEST FOR APPROX. 0.8 OF A MILE.  
LOCATION IS APPROX. 665 FT EAST.

DEVON ENERGY PRODUCTION COMPANY, L.P.

**CORAL PWU "28" #7H**

LOCATED 2100 FT. FROM THE SOUTH LINE  
AND 140 FT. FROM THE EAST LINE OF  
SECTION 28, TOWNSHIP 19 SOUTH,  
RANGE 29 EAST, N.M.P.M.  
EDDY COUNTY, STATE OF NEW MEXICO

MARCH 27, 2012

SURVEY NO. 952

MADRON SURVEYING, INC. 301 SOUTH CANAL CARLSBAD, NEW MEXICO  
(575) 234-3341

This is a detailed topographic map of the Coral PWU '28' #7H area. The map features a grid system with horizontal and vertical lines. Elevation contours are shown as solid lines, with spot heights marked by 'x' symbols (e.g., 3318T, 3329T, 3344T, 3352T, 3355T, 3358T, 3369T, 3389T, 3397T, 3398T, 3399T, 3300T, 3301T, 3306T, 3309T, 3315T, 3321T, 3324T, 3326T, 3327T, 3329T, 3330T, 3331T, 3332T, 3333T, 3334T, 3335T, 3336T, 3337T, 3338T, 3339T, 3340T, 3341T, 3342T, 3343T, 3344T, 3345T, 3346T, 3347T, 3348T, 3349T, 3350T, 3351T, 3352T, 3353T, 3354T, 3355T, 3356T, 3357T, 3358T, 3359T, 3360T, 3361T, 3362T, 3363T, 3364T, 3365T, 3366T, 3367T, 3368T, 3369T, 3370T, 3371T, 3372T, 3373T, 3374T, 3375T, 3376T, 3377T, 3378T, 3379T, 3380T, 3381T, 3382T, 3383T, 3384T, 3385T, 3386T, 3387T, 3388T, 3389T, 3390T, 3391T, 3392T, 3393T, 3394T, 3395T, 3396T, 3397T, 3398T, 3399T, 3400T). A dashed line indicates a proposed access road, labeled 'PROPOSED 489.1 LF ACCESS ROAD 3299T'. A square symbol marks a specific location on the map. The map also shows various other features such as a 'GW' (groundwater) symbol, a 'DH' (ditch) symbol, and a '3-37' symbol. The map is oriented with North at the top.

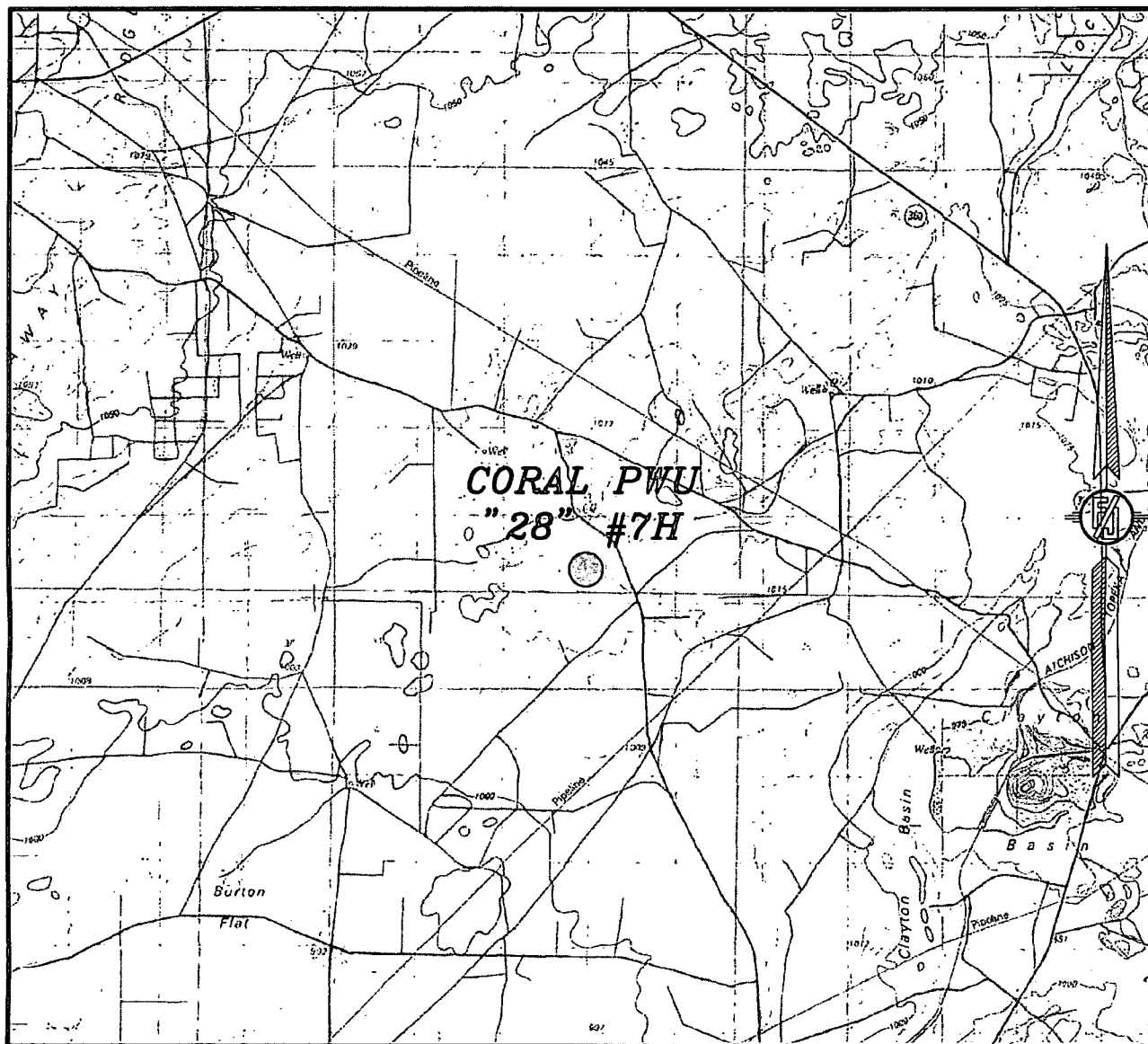
**NOT TO SCALE**

MARCH 27, 2012

**MADRON SURVEYING, INC.** 301 SOUTH CANAL  
(575) 234-3341 **CARLSBAD, NEW MEXICO**

301 SOUTH CANAL  
(575) 234-3341

SECTION 28, TOWNSHIP 19 SOUTH, RANGE 29 EAST, N.M.P.M.  
EDDY COUNTY, STATE OF NEW MEXICO  
VICINITY MAP



NOT TO SCALE

DEVON ENERGY PRODUCTION COMPANY, L.P.

**CORAL PWU "28" #7H**

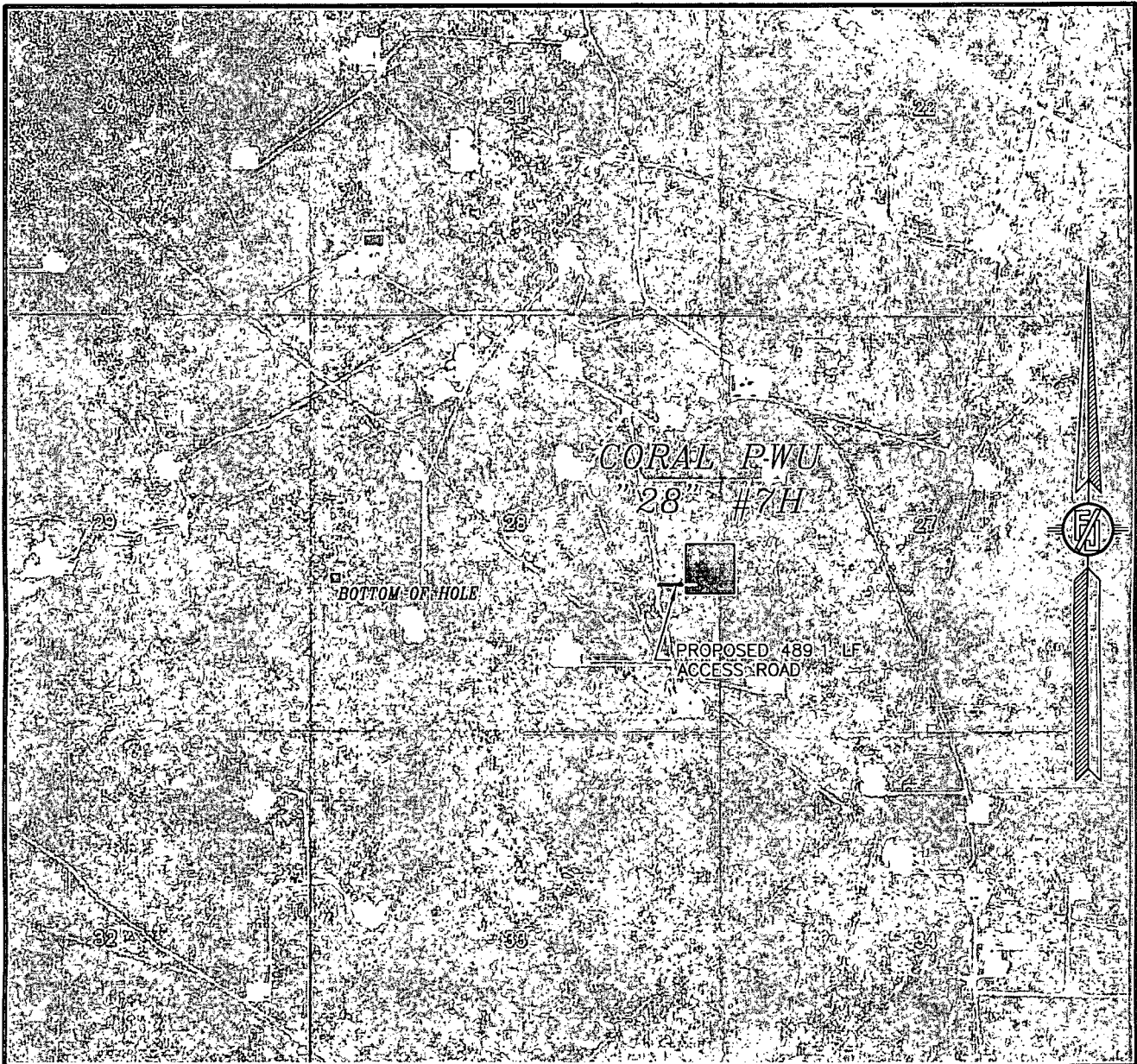
LOCATED 2100 FT. FROM THE SOUTH LINE  
AND 140 FT. FROM THE EAST LINE OF  
SECTION 28, TOWNSHIP 19 SOUTH,  
RANGE 29 EAST, N.M.P.M.  
EDDY COUNTY, STATE OF NEW MEXICO

MARCH 27, 2012

SURVEY NO. 952

MADRON SURVEYING, INC. 301 SOUTH CANAL CARLSBAD, NEW MEXICO  
(575) 234-3341

SECTION 28, TOWNSHIP 19 SOUTH, RANGE 29 EAST, N.M.P.M.  
EDDY COUNTY, STATE OF NEW MEXICO  
AERIAL PHOTO



NOT TO SCALE  
AERIAL PHOTO:  
GOOGLE EARTH  
JUNE, 2011

DEVON ENERGY PRODUCTION COMPANY, L.P.

**CORAL PWU "28" #7H**

LOCATED 2100 FT. FROM THE SOUTH LINE  
AND 140 FT. FROM THE EAST LINE OF  
SECTION 28, TOWNSHIP 19 SOUTH,  
RANGE 29 EAST, N.M.P.M.  
EDDY COUNTY, STATE OF NEW MEXICO

MARCH 27, 2012

SURVEY NO. 952

MADRON SURVEYING, INC. 301 SOUTH CANAL CARLSBAD, NEW MEXICO  
(575) 234-3341