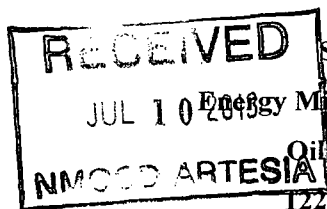


District I
1625 N. French Dr., Hobbs, NM 88240
Phone: (575) 393-6161 Fax: (575) 393-0720

District II
311 S. First St., Artesia, NM 88210
Phone: (575) 748-1283 Fax: (575) 748-9720

District III
1000 Rio Brazos Road, Aztec, NM 87410
Phone: (505) 334-6178 Fax: (505) 334-6170

District IV
1220 S. St. Francis Dr., Santa Fe, NM 87505
Phone: (505) 476-3460 Fax: (505) 476-3462



State of New Mexico
Energy Minerals and Natural Resources
Oil Conservation Division
1220 South St. Francis Dr.
Santa Fe, NM 87505

Form C-101
Revised November 14, 2012

☐ AMENDED REPORT

APPLICATION FOR PERMIT TO DRILL, RE-ENTER, DEEPEN, PLUGBACK, OR ADD A ZONE

¹ Operator Name and Address CAZA OPERATING, LLC. 200 NORTH LORAIN SUITE 1550 MIDLAND, TEXAS 79701		² OGRID Number 249099
³ Property Code 40013		⁴ Property Name FOREHAND RANCH 27 STATE
⁵ API Number 30-015-41530		⁶ Well No. #5 SWD

⁷ Surface Location

UL - Lot B	Section 27	Township 23S	Range 27E	Lot Idn	Feet from 500'	N/S Line North	Feet From 1650'	E/W Line East	County Eddy
----------------------	----------------------	------------------------	---------------------	---------	--------------------------	--------------------------	---------------------------	-------------------------	-----------------------

⁸ Proposed Bottom Hole Location

UL - Lot	Section	Township	Range	Lot Idn	Feet from	N/S Line	Feet From	E/W Line	County
----------	---------	----------	-------	---------	-----------	----------	-----------	----------	--------

⁹ Pool Information

¹⁰ Pool Name SWD; Bell Canyon - Cherry Canyon	¹¹ Pool Code 96502
--	---

Additional Well Information

¹² Work Type N	¹³ Well Type S	¹⁴ Cable/Rotary Rotary	¹⁵ Lease Type S	¹⁶ Ground Level Elevation 3158'
¹⁷ Multiple NO	¹⁸ Proposed Depth 3500'	¹⁹ Formation CHERRY CANYON	²⁰ Contractor Capstar	²¹ Spud Date When Approved
²² Depth to Ground water 100'		²³ Distance from nearest fresh water well .5 miles Northeast		²⁴ Distance to nearest surface water No surface water near

²⁵ Proposed Casing and Cement Program

Type	Hole Size	Casing Size	Casing Weight/ft	Setting Depth	Sacks of Cement	Estimated TOC
Conductor	26"	20"	NA	40'	Redi-mix	Surface
Surface	12 1/4"	8 5/8"	24#	450'	195 Sx.	Surface
Prod.	7 7/8"	5 1/2"	17#	3500'	780 Sx.	Surface

Casing/Cement Program: Additional Comments

SEE ATTACHED SHEET

²⁶ Proposed Blowout Prevention Program

Type	Working Pressure	Test Pressure	Manufacturer
Double Ram	3000 PSI	2000 PSI	Cameron or Schaffer

²⁷ I hereby certify that the information given above is true and complete to the best of my knowledge and belief.
I further certify that I have complied with 19.15.14.9 (A) NMAC ☐ and/or 19.15.14.9 (B) NMAC ☐, if applicable.

Signature: *Joe T. Janica*

Printed name: Joe T. Janica

Title: Permit Eng.

E-mail Address: joejanica@valornet.com

Date: 07/09/13

Phone: 575-391-8503

OIL CONSERVATION DIVISION

Approved By: *T.C. Shepard*

Title: *Geologist*

Approved Date: *7/10/2013*

Expiration Date: *7/10/2015*

Conditions of Approval Attached

Non-well POIS 2837077

1. Drill 26" hole to 40'. Set 40' of 20" conductor pipe and cement to surface with Redi-mix.
2. Drill 12 $\frac{1}{4}$ " hole to 450'. Run and set 450' of 8 5/8" 24# J-55 ST&C casing. Cement with 95 Sx. of Class "C" cement + 4% Bentonite, + 2% CaCl, + 0.25# Celloflakes/Sx. Yield 1.75. Tail in with 100 Sx. of Class "C" cement + 2% CaCl. Yield 1.33 50% Excess, circulate cement to surface.
3. Drill 7 7/8" hole to 3500'. Run and set 3500' of 5 $\frac{1}{2}$ " 17# J-55 LT&C casing. Cement with 389 Sx. of Class "C" cement + 4% Gel, + 1% CaCl Yield 1.75, tail in with 391 Sx. of Class "C" cement + 1% CaCl, Yield 1.33. 100% Excess, circulate circulate cement to surface.

DISTRICT I
1825 N. French Dr., Hobbs, NM 88240
Phone (575) 393-6161 Fax: (575) 393-0720

DISTRICT II
1301 W. Grand Avenue, Artesia, NM 88210
Phone (575) 748-1283 Fax: (575) 748-9720

DISTRICT III
1000 Rio Brazos Rd., Aztec, NM 87410
Phone (505) 334-6178 Fax: (505) 334-6170

DISTRICT IV
1220 S. St. Francis Dr., Santa Fe, NM 87505
Phone (505) 476-3460 Fax: (505) 476-3462

State of New Mexico
Energy, Minerals and Natural Resources Department

OIL CONSERVATION DIVISION
1220 South St. Francis Dr.
Santa Fe, New Mexico 87505

RECEIVED

JUL 10 2013

Submit one copy to appropriate District Office

Form C-102

Revised August 1, 2011

WELL LOCATION AND ACREAGE DEDICATION PLAT

☐ AMENDED REPORT

API Number 30-08-41530	Pool Code 6802	Pool Name SWD, Bell Canyon FOREHAND RANCH-SWD
Property Code 40013	Property Name FOREHAND RANCH "27" STATE	Well Number 5 SWD
GRID No. 249099	Operator Name CAZA OPERATING, LLC.	Elevation 3158'

Surface Location

UL or lot No.	Section	Township	Range	Lot Idn	Feet from the	North/South line	Feet from the	East/West line	County
B	27	23 S	27 E		500	NORTH	1650	EAST	EDDY

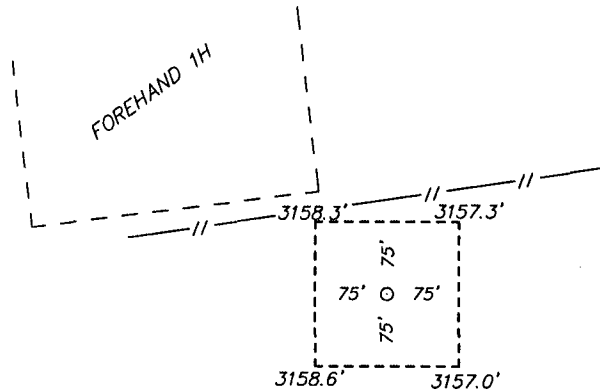
Bottom Hole Location If Different From Surface

UL or lot No.	Section	Township	Range	Lot Idn	Feet from the	North/South line	Feet from the	East/West line	County
Dedicated Acres 40	Joint or Infill	Consolidation Code	Order No.						

NO ALLOWABLE WILL BE ASSIGNED TO THIS COMPLETION UNTIL ALL INTERESTS HAVE BEEN CONSOLIDATED
OR A NON-STANDARD UNIT HAS BEEN APPROVED BY THE DIVISION

<p>SURFACE LOCATION Lot - N 32°16'54.68" Long - W 104°10'29.30" NMSPCE- N 466308.1 E 590328.4 (NAD-83)</p>	<p>500'</p> <p>1650'</p>	<p>OPERATOR CERTIFICATION</p> <p>I hereby certify that the information contained herein is true and complete to the best of my knowledge and belief, and that this organization either owns a working interest or unleased mineral interest in the land including the proposed bottom hole location or has a right to drill this well at this location pursuant to a contract with an owner of such a mineral or working interest, or to a voluntary pooling agreement or a compulsory pooling order heretofore entered by the division.</p> <p><i>Joe T. Janica</i> Signature Date Joe T. Janica 07/09/13 Printed Name joejanica@valornet.com Email Address</p>
		<p>SURVEYOR CERTIFICATION</p> <p>I hereby certify that the well location shown on this plat was plotted from field notes of actual surveys made by me or under my supervision, and that the same is true and correct to the best of my belief.</p>
		<p>Date Surveyed Signature and Seal of Professional Surveyor 7977</p>
		<p>Certificate No. Gary L. Jones 7977 BASIN SURVEYS 28521</p>

SECTION 27, TOWNSHIP 23 SOUTH, RANGE 27 EAST, N.M.P.M.,
EDDY COUNTY, NEW MEXICO.



CAZA OPERATING, LLC.
FOREHAND RANCH "27" STATE #5 SWD
ELEV. - 3158'

Lat - N 32°16'54.68"
Long - W 104°10'29.30"
NMSPCE- N 466308.1
E 590328.4
(NAD-83)

200 0 200 400 FEET

SCALE: 1" = 200'

Directions to Location:

FROM THE JUNCTION OF LONDON AND GRANDI, GO
SOUTH ON GRANDI FOR 0.3 MILES TO PROPOSED
LEASE ROAD.

CAZA OPERATING, LLC.

REF: FOREHAND RANCH "27" STATE #5 SWD / WELL PAD TOPO

THE FOREHAND RANCH "27" STATE #5 SWD LOCATED 500'

FROM THE NORTH LINE AND 1650' FROM THE EAST LINE OF

SECTION 27, TOWNSHIP 23 SOUTH, RANGE 27 EAST,

N.M.P.M., EDDY COUNTY, NEW MEXICO.

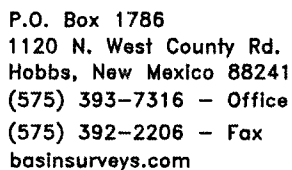
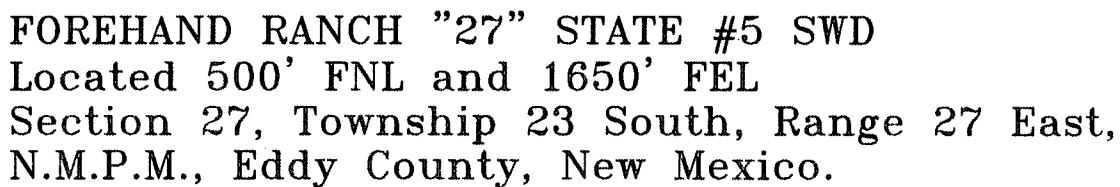
BASIN SURVEYS P.O. BOX 1786-HOBBS, NEW MEXICO

W.O. Number: 28521 Drawn By: J. SMALL

Date: 04-25-2013 Disk: JMS 28521

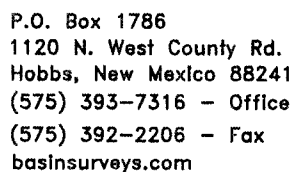
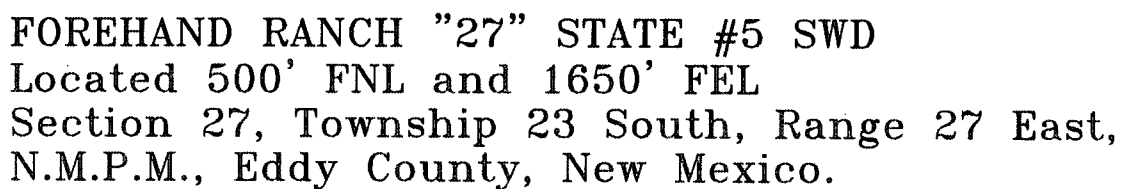
Survey Date: 04-20-2013

Sheet 1 of 1 Sheets



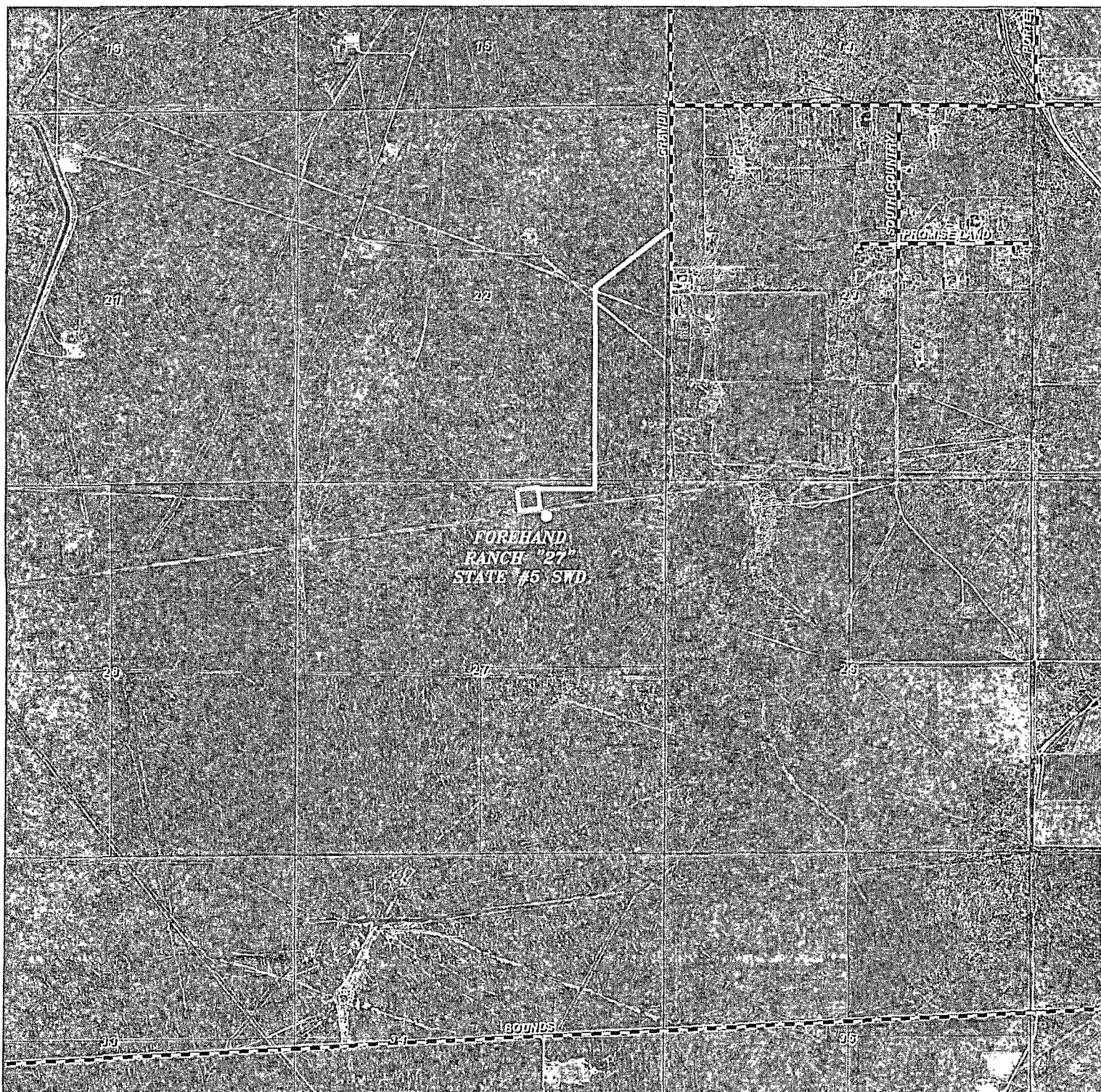
Date: 04-25-2013

CAZA
OPERATING,
LLC.



Date: 04-25-2013





FOREHAND RANCH "27" STATE #5 SWD
Located 500' FNL and 1650' FEL
Section 27, Township 23 South, Range 27 East,
N.M.P.M., Eddy County, New Mexico.

basin
surveys
focused on excellence
in the oilfield

P.O. Box 1786
1120 N. West County Rd.
Hobbs, New Mexico 88241
(575) 393-7316 - Office
(575) 392-2206 - Fax
basinsurveys.com

W.O. Number: JMS 20981

Scale: 1" = 2000'

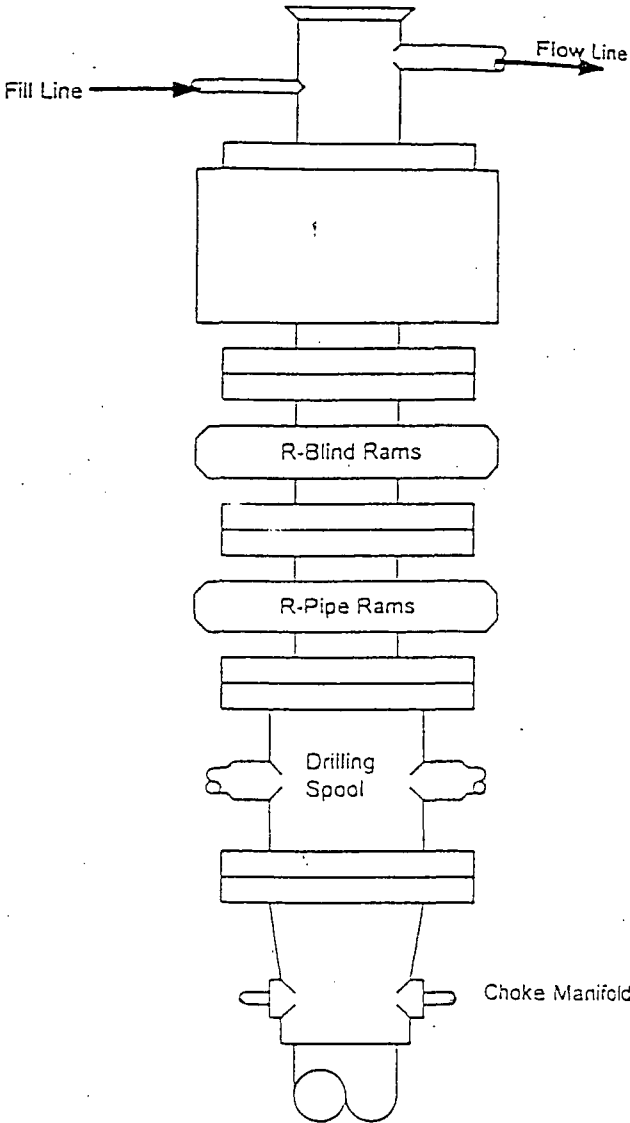
YELLOW TINT - USA LAND
BLUE TINT - STATE LAND
NATURAL COLOR - FEE LAND



CAZA
OPERATING,
LLC.

BLOWOUT PREVENTER SYSTEM

3000 PSI WORKING PRESSURE



Type 900 Series
3000 psi WP

Choke Manifold Assembly for 3M WP System

