

DISTRICT I  
1625 N. FRENCH DR., HOBBS, NM 88240

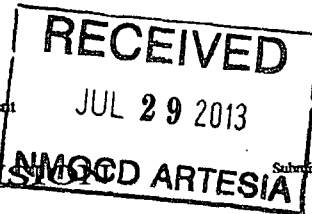
DISTRICT II  
1301 W. GRAND AVENUE, ARTESIA, NM 88210

DISTRICT III  
1000 RIO BRAZOS RD., AZTEC, NM 87410

DISTRICT IV  
11885 S. ST. FRANCIS DR., SANTA FE, NM 87505

State of New Mexico  
Energy, Minerals and Natural Resources Department

OIL CONSERVATION DIVISION  
11885 SOUTH ST. FRANCIS DR.  
Santa Fe, New Mexico 87505



Form C-102  
Revised October 12, 2005  
Submit to Appropriate District Office  
State Lease - 4 Copies  
Fee Lease - 3 Copies

WELL LOCATION AND ACREAGE DEDICATION PLAT

☐ AMENDED REPORT

API Number 30-015-37584	Pool Code 97558	Pool Name GJ;7RVS-QN-GB-Glorieta Yeso
Property Code 302497	Property Name GJ WEST COOP UNIT	Well Number 303
OGRID No. 229137	Operator Name COG OPERATING, LLC	Elevation 3551'

Surface Location

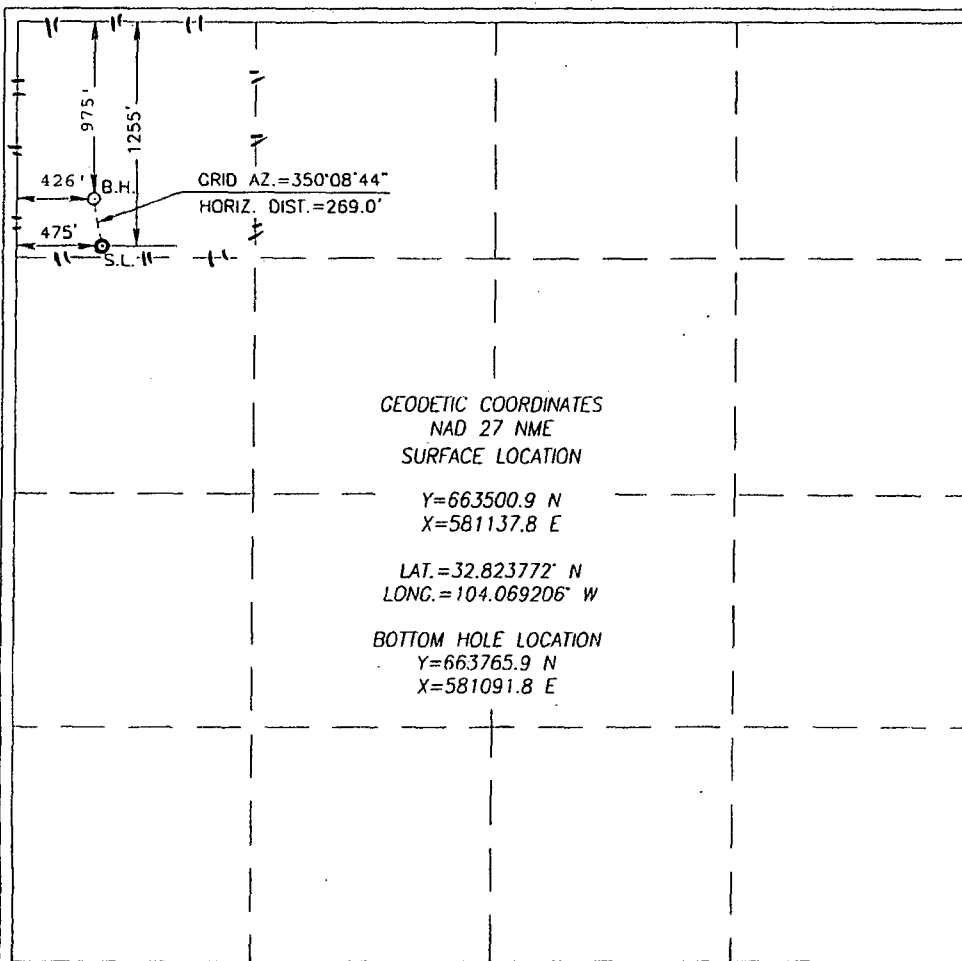
UL or lot No.	Section	Township	Range	Lot Idn	Feet from the	North/South line	Feet from the	East/West line	County
D	22	17-S	29-E		1255	NORTH	475	WEST	EDDY

Bottom Hole Location If Different From Surface

UL or lot No.	Section	Township	Range	Lot Idn	Feet from the	North/South line	Feet from the	East/West line	County
D	22	17-S	29-E		975	NORTH	426	WEST	EDDY

Dedicated Acres 40	Joint or Infill	Consolidation Code	Order No.
-----------------------	-----------------	--------------------	-----------

NO ALLOWABLE WILL BE ASSIGNED TO THIS COMPLETION UNTIL ALL INTERESTS HAVE BEEN CONSOLIDATED  
OR A NON-STANDARD UNIT HAS BEEN APPROVED BY THE DIVISION



OPERATOR CERTIFICATION

I hereby certify that the information herein is true and complete to the best of my knowledge and belief, and that this organization either owns a working interest or unleased mineral interest in the land including the proposed bottom hole location or has a right to drill this well at this location pursuant to a contract with an owner of such mineral or working interest, or to a voluntary pooling agreement or a compulsory pooling order heretofore entered by the division.

Date  
7/26/2013  
Signature  
Kelly J. Holly  
Printed Name

SURVEYOR CERTIFICATION

I hereby certify that the well location shown on this plat was plotted from field notes of actual surveys made by me or under my supervision, and that the same is true and correct to the best of my belief.

Date Surveyed  
Signature & Seal of  
Professional Surveyor  
Ronald J. Eidson  
09/11/2010

Certificate No. GARY G. EIDSON 12841  
RONALD J. EIDSON 3239