

UNITED STATES  
DEPARTMENT OF THE INTERIOR  
BUREAU OF LAND MANAGEMENTArtesia  
OCD HobbsFORM APPROVED  
OMB NO. 1004-0135  
Expires: July 31, 2010**SUNDRY NOTICES AND REPORTS ON WELLS**  
*Do not use this form for proposals to drill or to re-enter an abandoned well. Use form 3160-3 (APD) for such proposals.*5. Lease Serial No.  
NMLC029435B

6. If Indian, Allottee or Tribe Name

7. If Unit or CA/Agreement, Name and/or No.

**SUBMIT IN TRIPLICATE - Other instructions on reverse side.**8. Well Name and No.  
J L KEEL B 279. API Well No.  
30-015-1037210. Field and Pool, or Exploratory  
GRAYBURG JACKSON;SR-Q-G-S11. County or Parish, and State  
EDDY COUNTY, NM

1. Type of Well

☒ Oil Well ☐ Gas Well ☐ Other2. Name of Operator  
LINN OPERATING INC.Contact: TERRY B CALLAHAN  
E-Mail: tcallahan@linnenergy.com3a. Address  
600 TRAVIS STREET, SUITE 5100  
HOUSTON, TX 770023b. Phone No. (include area code)  
Ph: 281-840-4272

4. Location of Well (Footage, Sec., T., R., M., or Survey Description)

Sec 8 T17S R31E Mer NMP NWSE 1980FSL 1980FEL  
32.847290 N Lat, 103.888980 W Lon

## 12. CHECK APPROPRIATE BOX(ES) TO INDICATE NATURE OF NOTICE, REPORT, OR OTHER DATA

TYPE OF SUBMISSION	TYPE OF ACTION			
<input type="checkbox"/> Notice of Intent	<input type="checkbox"/> Acidize	<input type="checkbox"/> Deepen	<input type="checkbox"/> Production (Start/Resume)	<input type="checkbox"/> Water Shut-Off
<input checked="" type="checkbox"/> Subsequent Report	<input type="checkbox"/> Alter Casing	<input type="checkbox"/> Fracture Treat	<input type="checkbox"/> Reclamation	<input type="checkbox"/> Well Integrity
<input type="checkbox"/> Final Abandonment Notice	<input type="checkbox"/> Casing Repair	<input type="checkbox"/> New Construction	<input type="checkbox"/> Recomplete	<input type="checkbox"/> Other
	<input type="checkbox"/> Change Plans	<input checked="" type="checkbox"/> Plug and Abandon	<input type="checkbox"/> Temporarily Abandon	
	<input type="checkbox"/> Convert to Injection	<input type="checkbox"/> Plug Back	<input type="checkbox"/> Water Disposal	

13. Describe Proposed or Completed Operation (clearly state all pertinent details, including estimated starting date of any proposed work and approximate duration thereof. If the proposal is to deepen directionally or recompleat horizontally, give subsurface locations and measured and true vertical depths of all pertinent markers and zones. Attach the Bond under which the work will be performed or provide the Bond No. on file with BLM/BIA. Required subsequent reports shall be filed within 30 days following completion of the involved operations. If the operation results in a multiple completion or recompleat in a new interval, a Form 3160-4 shall be filed once testing has been completed. Final Abandonment Notices shall be filed only after all requirements, including reclamation, have been completed, and the operator has determined that the site is ready for final inspection.)

WIS SYSTEM IS NOT ACCEPTING THE LENGTH OF THE PROCEDURES, PLEASE SEE ATTACHED DOCUMENT AND WELLBORE DIAGRAM

ACCEPTED FOR RECORD

JUL 29 2013

BUREAU OF LAND MANAGEMENT

RECEIVED

JUL 31 2013

NMOCD ARTESIA

RECLAMATION  
DUE 11-5-13

Accepted as to plugging of the well bore.  
Liability under bond is retained until  
Surface restoration is completed.

Accepted for record 8/1/2013  
NMOCD

14. I hereby certify, that the foregoing is true and correct.

Electronic Submission #213699 verified by the BLM Well Information System  
For LINN OPERATING INC., sent to the Carlsbad  
Committed to AFMSS for processing by JOHNNY DICKERSON on 07/18/2013 ()

Name (Printed/Typed) TERRY B CALLAHAN

Title REG COMPLIANCE SPECIALIST 3

Signature (Electronic Submission)

Date 07/16/2013

## THIS SPACE FOR FEDERAL OR STATE OFFICE USE

Approved By

Title

Date

Conditions of approval, if any, are attached. Approval of this notice does not warrant or certify that the applicant holds legal or equitable title to those rights in the subject lease which would entitle the applicant to conduct operations thereon.

Office

Title 18 U.S.C. Section 1001 and Title 43 U.S.C. Section 1212, make it a crime for any person knowingly and willfully to make to any department or agency of the United States any false, fictitious or fraudulent statements or representations as to any matter within its jurisdiction.

**\*\* OPERATOR-SUBMITTED \*\* OPERATOR-SUBMITTED \*\* OPERATOR-SUBMITTED \*\***

J L KEEL B 27  
API # 30-015-10372  
3160-5 ATTACHMENT

---

4/18/2013 - MIRU PU. CLEAN OUT CELLAR AROUND WELLHEAD. WO 8-1/4" WELLHEAD FLANGE. NDWH NU BOP CATCH PAN. RU WL TIH W/ 5 1/2" GAUGE RING. TAG UP @ 618' TOH W/ GAUGE RING. PICK UP WS 2 3/8" TIH OPEN END TAG FISH/ FILL @ 653'. TOH W/ 10 STDS RU MULE SHOE TIH TAG @ 653'. TOH W/ 10 STANDS RU MULE SHOE TIH TAG @ 653'. WORKED SHOE W/ TONGS MADE 1 1/2". RU PUMP TRUCK PUMP 400 BBLs WATER UNABLE TO WASH OUT FILL.

4/19/2013 - RIH W/ 5 1/2" PKR. TO 549' AND SET PKR. EST INJ. RATE OF 3 1/2 BPM @ 200 PSI. COMMUNICATED ABOVE PKR. UNLOADED 15 JTS. OF WS FROM TRUCK. MOVED TRUCK TO NEXT LOCATION. RD WL AND MOVED TO SAME LOCATION.

4/22/2013 - PU & RIH W/6-3 1/2" DC'S & 4 3/4" BIT. TAGGED @ 659'. RU REV UNIT. DRILLING OUT FILL FROM 659 - 966'. CONTACTED JIM AMOS W/BLM. HE APPROVED SETTING A 100 SX PLUG THERE. RD REV UNIT. POH LD DC'S & BIT. RIH W/TBG. COULDN'T GO DEEPER THAN 903'. MIXED & PUMPED 100 SX CLASS "C" CEMENT. POH STANDING TBG. BACK IN DERRICK. SI WELL.

4/23/2013 - OPENED UP WELL. SICP 0 PSI. RIH W/TBG. TO 903'. DIDN'T TAG ANYTHING. DROVE TRANSPORT TO WTR. STATION AND BROUGHT BACK LOAD OF FW. PUMPED 100 SX CLASS "C" CMT. @ 903' POH W/TBG. WOC. RIH W/ TBG. DIDN'T TAG. PUMPED 100 SX CLASS "C" CMT. AT 903'. POH W/TBG. LOAD CMT ONTO PUMP BULK.

4/24/2013 - HELD SAFETY MTG. OPENED UP WELL. RIH W/TBG. DIDN'T TAG CMT. JIM AMOS W/BLM APPROVED 100 SX PLUG W/LCM & 2% CACL. MIXED & PUMPED 100 SX CLASS "C" CEMENT W/LCM & 2% CACL @ 903'. WITNESSED BY CHERYL DE MONTIGNY W/BLM. POH STANDING BACK TBG. WOC DROVE TO WATER STATION AND LOADED FW. WOC DROVE TO WATER STATION AND LOADED FW. RIH W/TBG. & TAGGED PLUG @ 874'. CHERYL DE MONTIGNY W/BLM APPROVED 25 SX PLUG W/LCM & CACL. MIXED & PUMPED S5 SX CLASS "C" CEMENT W/LCM & 2% CACL @ 874 - 627'. WITNESSED BY CHERYL DE MONTIGNY W/BLM. POH STANDING BACK TBG. SION

4/25/2013 - HELD SAFETY MTG. OPENED UP WELL. RIH W/TBG. TO 874', DIDN'T TAG PLUG. CHERYL W/BLM APPROVED 35 SX PLUG W/2% CACL & LCM. MIXED & PUMPED 35 SX CLASS "C" CEMENT W/2% CACL & LCM FROM 874 - 627'. POH STANDING TBG. BACK. WOC REPAIRED HYDRAULIC LEAKS ON PUMP, REPAIRED BAD CYLINDER ON TYPE "B" SLIPS. RIH W/TBG. TO 874', DIDN'T TAG PLUG. CHERYL W/BLM APPROVED 100 SX PLUG W/CACL & LCM. MIXED AND PUMPED 100 SX CLASS "C" CEMENT W/2% CACL AND LCM FROM 874-627'. POH W/TBG. SION DROVE TO WATER STATION & LOADED FW. LOADED BULK CEMENT ON TRUCK. REPAIRED AIR LEAKS ON RIG. REPLACED TWO 1/4" VALVES.

4/26/2013 - OPENED UP WELL. RIH W/TBG. TAGGED PLUG @ 826'. JIM AMOS W/BLM ASKED TO PERFORATE @ 620'. PUMPED 30 BBLs. DOWNHOLE, BROKE CIRCULATION FROM PRODUCTION CSG. POH LD 10 JTS. & STOOD BACK REST. RU WL, PERF. CSG. @ 620'. RIH W/5 1/2" PKR. JIM AMOS W/BLM APPROVED SPOTTING 25 SX PLUG @ 826'.

POH LD PKR. RIH W/TBG. MIXED & PUMPED 25 SX CLASS "C" CEMENT W/2% CACL AND LCM. POH W/TBG. WOC. RIH W/TBG. AND TAGGED PLUG @ 826'. JIM AMOS APPROVED ANOTHER 25 SX PLUG. MIXED & PUMPED 25 SX CLASS "C" CEMENT W/2% CACL AND LCM FROM 826-630'. POH SION.

4/29/2013 - RIH W/ TBG TO 826' TAGGED CMT PLUG. WOO. TALKED TO JIM AMOS W/ BLM. POUR PEA GRAVEL DOWN TBG @ 826' TO BUILD 5' BASE. PUMP 25 SKS CLASS C CMT. MIXED W/ 3% CC. WOC. POUR 2 SKS PEA GRAVEL DOWN TBG @ 826' POH W/ TBG. RIH W/ WL TO 826' TAG CMT. POH W/ WL. RIH W/ TBG TO 826' POUR 8 SKS PEA GRAVEL BUILD BASE. NO CHANGE. ORDER 10 YDS PEA GRAVEL FOR TUESDAY. SISD

4/30/2013 - POH W/ 1 JT TBG. POUR 2 5 GAL CANS OF PEA GRAVEL. RIH W/ WL TAG @ 826' REPEAT PROCESS 8 TIMES. TAG FILL @ 818' CALL BLM. JIM AMOS. SPOT 25 SKS CLASS C CMT W/ 3% CC. FROM 818'-571'. SPOT 25 SKS CLASS C CMT W/ 3% CC. FROM 818'-571'. RAISE TBG UP TO 620' REVERSE CIRC FROM 620- TO SURFACE. POH W/ TBG. DID NOT CIRC. PUMPED 30 BBLs. RIH W/ WL TAG @ 818' CALL BLM. JIM AMOS. POH W/ WL. PUR 2 FIVE GALLON BUCKETS OF PEA GRAVEL. RIH W/ WL TAG @ 792'. SPOT 25 SKS CLASS C CMT. W/ 3% CC & LCM. 792'-545' RAISE TBG UP TO 620' REVERSE CIRC W/ 30 BBLs. DID NOT CIRCULATE. POH W/ TBG. SISD

5/1/2013 - RIH W/TBG. TAGGED PLUG @ 697'. WOO. POH W/ TBG. RIH W/PKR. MIXED & PUMPED 40 SX CLASS "C" CEMENT W/3% CACL FROM 620-520'. 0 PSI SI WELL. WOC DROVE TO WATER STATION & LOADED 120 BBLs. FW. POH W/PKR., RIH W/TBG. TAGGED PLUG @ 633'. JIM AMOS APPROVED ANOTHER SQUEEZE W/50 SX. POH W/TBG. RBIH W/PKR. & SET @ 372'. MIXED & PUMPED 50 SX CLASS "C" CEMENT W/3% CACL FROM 620-520'. 0 PSI SION

5/2/2013 - OPENED WELL. TRIED TO RELEASE PKR. PACKER STUCK. TRIED TO SHEAR PKR. BUT COULDN'T GET IT LOOSE. RIH WWL, TAGGED CMT. @ 367'. PKR. SET @ 372'. PKR. CEMENTED IN WELL. CONTACTED RON RAGLAND, BLM, & BCM. PULLED 10,000# ON TBG., TRIED TO SPIN TO THE RIGHT & UNSCREW FROM PKR. DIDN'T WORK. WORKED TBG. UP & DOWN, TRIED TO BACK OF TBG. TO THE LEFT. UNSCREWED 4 JTS. RIH & SCREWED BACK ON. TRIED TO UNSCREW AGAIN, UNSCREWED 5 JTS. RIH & SCREWED BACK ON. CALLED BCM. RU PRIMERCORD SHOT ON 5' X 3/4" ROD. RIH TO 367' WWL & SHOT. PULLED 20,000# ON TBG. & PUT RIGHT HAND TORQUE IN. SET OFF SHOT. POH WWL. TBG. DIDN'T COME FREE. WORKED TBG., TURNED TO RIGH. WORKED TBG. FROM 30,000# & DROPPED TO 0#. WOULDN'T COME FREE. RU ROPE SOCKET FOR TBG. CUTTER (JET CUTTER). FIRING SUB HAD SHORT IN IT, WOULD NOT TEST GOOD. PICKUP FIRING HEAD FROM RIG #1 - ALSO HAD SHORT IN IT. CALLED RON & BLM. SION

5/3/2013 - OPENED UP WELL. PULLED 20,000# ON TBG. AND SET SLIPS. RU WL W/NEW ROPESOCKET & 2 3/8" TBG. CUTTER. RIH TO 365'. SHOT TBG. POH. WORKED TBG. UP & DOWN TO 40,000#. TURNED TBG. TO THE RIGHT. WOULDN'T COME FREE. JIM AMOS W/BLM APPROVED CUTTING 10' HIGHER @ 355'. PULLED 40,000# ON TBG. AND SET SLIPS. RU WL W/2 3/8" JET CUTTER, RIH & CUT TBG. @ 355'. POH WWL. WORKED TBG. UP & DOWN NS DTO THE RIGHT BUT WOULDN'T COME FREE. PULLED STRECH ON TBG. AND SHOWS TO BE FREE AT 300'. CALLED JIM AMOS W/BLM. HE APPROVED CUTTING TBG. @ 275'. RU WL W/2 3/8" JET CUTTER. RIH & CUT TBG. @ 275'. POH WWL. WORKED TBG. LOOSE AND POH LD 8 JTS. & 27' OF CUT JT. RIH W/TBG. IN DERRICK, LD TBG. RIH W/8 JTS. TBG. CLOSED BOP & 5 1/2" CSG. VALVES. PUMPED

DOWN TBG. & TRIED TO CIRCULATE TO SURFACE. PUMPED 30 BBLS. WATER BUT DIDN'T CIRCULATE. TIED ONTO SURFACE VALVES. PUMPED DOWN HOLE WITH 200 PSI. 2" PLUG ON SURFACE WELLHEAD BLEW OUT. REMOVED BAD 2" PLUG WITH A CHISEL & REPLACED W/GOOD PLUG. PUMPED DOWN SURFACE VALVE @ 250 PSI, BLEW HOLE IN SURFACE CASING.

5/6/2013 - OPENED UP WELL. JIM AMOS W/BLM APPROVED SQUEEZING 30 SX W/3% CACL @ 250'. WO REGULATORY IN HOUSTON TO START PLUG. TIH W/TBG. TO 250'. MIXED & PUMPED 30 SX CLASS "C" W/2% CACL @ 80 PSI. SI W/O PSI. POH W/TBG. WOC. RU WL RIH TO TAG PLUG. CEMENT NOT SET UP YET. WAITED 1 1/2 MORE HRS. CHERYL W/BLM APPROVED WAITING UNTIL MORNING TO TAG AGAIN.

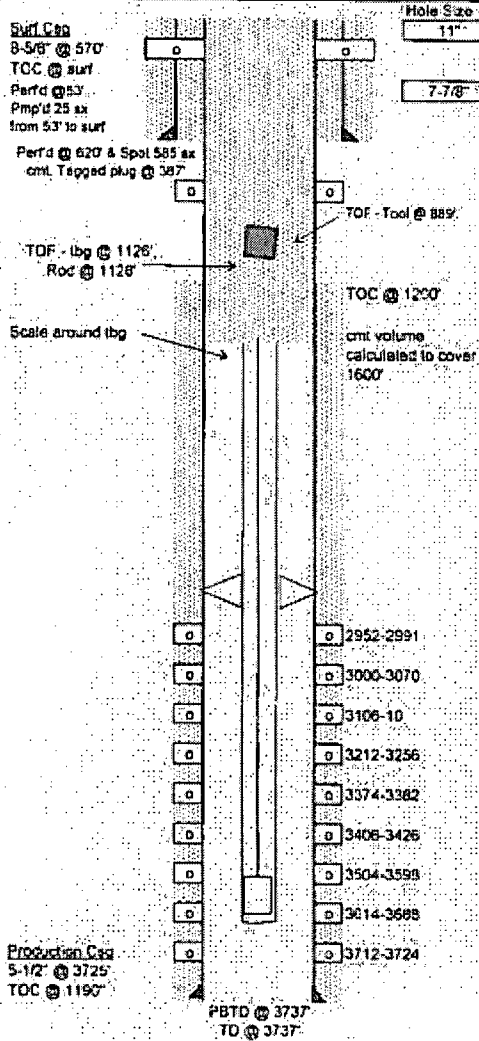
5/7/2013 - OPENED WELL UP. RIH AND TAGGED PLUG @ 53'. POH. NOTIFIED JIM AMOS OF PLUG DEPTH. HE APPROVED PERFORATING @ 53' AND TRYING TO CIRC. CEMENT TO SURFACE. RU WL, RIH & PERF. @ 53'. POH. NOTIFIED JIM AMOS OF PLUG DEPTH. HE APPROVED PERFORATING @ 53' AND TRYING TO CIRC. CEMENT TO SURFACE. RU WL, RIH & PERF. @ 53'. POH. RIH W/PKR. & SET @ 5'. MIXED & PUMPED 25 SX CLASS "C" CEMENT FROM 53' TO SURFACE. DID NOT CIRC. TO SURFACE HEAD. HOOKED UP TO SURFACE HEAD. BEGAN TO PUMP CEMENT. HOLE DEVELOPED IN SURFACE CASING BELOW SURFACE WELLHEAD. DUG OUT CELLAR. ND BOP CUT OFF WELLHEAD. CLEANED OUT STEEL PIT W/PUMP. RD PUMP & EQUIPMENT.

5/8/2013 - RDPV & EQUIPMENT. DROVE TO NEXT LOCATION. INSTALLED GROUND LEVEL MARKER. COVERED CELLAR, CUT OFF DEADMEN & CLEANED LOCATION.

# Current Wellbore Schematic as of 5/2/2013

Well Name: JL KEEL 9 27  
 Location: J-08-17S-31E 1980 FSL 1980 FEL  
 API #: 32 84729 103 88898  
 30-015-10372  
 Elevations: GROUND: 3781'  
 KB:   
 Depths (KB): PBTD:   
 TD: 3737'

Date Prepared: 6/25/2013 Brandi Williams  
 Last Updated:   
 Spud Date: 5-09-64  
 RR Date: 22-09-64  
 Spud Date to RR Date:   
 Completion Start Date:   
 Completion End Date:   
 Completion Total Days:   
 Co-ordinates:



Hole Size	Surface Casing
11"	8-5/8" 24# J-55 set at 570'
	Cmt w/ 370' ex incor 2% gel - 2% Ca Cl
	TOC @ Surf
7-7/8"	Production Casing
	5-1/2" 148.17# J-55 set at 3725'
	Cmt w/ 325' ex
	TOC @ 1200' - C81
	Tubing
	Length (ft)
	2-7/8" 6.5# J-55, Bnd 3637'
	1 SN 3638'
	Rods & Pump
	1 polish rod 25'
	2 pony rods (78-D) 10'
	51 7/8 rods (78-D) 1275'
	81 3/4 rods (78-D) 2025'
	12 7/8 rods (78-D) 900'
	1 pony rod (78-D) 2'
	Notes:
	1/25/11 - Unsuccessful workover. Tbg and rods stuck in hole and full of scale.
	P&A Notes:
	Pumped 585' ex @ 874'. Tagged plug @ 826'. Dumped 50 gals of pea gravel and tagged @ 697'.
	Sp'd 40' ex and displaced to 520'. Tagged @ 633'. Sp'd 50' ex, tagged @ 367'.
	Perf'd @ 53'. Pmp'd 25' ex from 53' to surf. Cull off wellhead. Install ground level marker.
	Perforations:
	2952-2991
	2983-89, 91, 3000-10
	3027-29
	3048-51, 53-58, 60, 3064-70
	3106-10
	3212-14, 20, 22, 24, 34
	3243-45, 47, 52, 54
	3276-78, 3286-89, 3308-10, 12
	3247-58
	3374-76, 78, 80, 82
	3405-12, 20, 26
	3504-05, 06, 07, 08
	3542-46, 3551-57
	3594-98
	3614-19, 3624-28, 3639-55, 3668-74, 3680-88
	3712-16, 3722-24

Production Casing  
 5-1/2" @ 3725'  
 TOC @ 1190'