

UNITED STATES  
DEPARTMENT OF THE INTERIOR  
BUREAU OF LAND MANAGEMENT

OCD Artesia

## APPLICATION FOR PERMIT TO DRILL OR REENTER

5. Lease Serial No.  
SL:NMO16786; BL:NM1175556. If Indian, Allottee or Tribe Name  
N/A7. If Unit or CA Agreement, Name and No.  
N/A8. Lease Name and Well No.  
Chimay 6 Federal Com LBB #5H9. API Well No.  
30-015-10. Field and Pool, or Exploratory  
Loco Hills; Glorieta-Yeso11. Sec., T. R. M. or Blk. and Survey or Area  
Sec 1 & 6, T17S, R29E & R30E12. County or Parish  
EDDY13. State  
NM1a. Type of work: ☒ DRILL☐ REENTER1b. Type of Well: ☒ Oil Well ☐ Gas Well ☐ Other☒ Single Zone ☐ Multiple Zone

2. Name of Operator COG Operating LLC

3a. Address One Concho Center, 600 W. Illinois Ave  
Midland, TX 797013b. Phone No. (include area code)  
432-685-4385

4. Location of Well (Report location clearly and in accordance with any State requirements.)\*

At surface SHL: 2310' FSL &amp; 10' FEL, Unit I, Sec 1, R29E

At proposed prod. zone BHL: 2301' FSL &amp; 330' FEL, Unit I, Sec 6, R30E

14. Distance in miles and direction from nearest town or post office\*

2 miles from Loco Hills, NM

15. Distance from proposed\*  
location to nearest  
property or lease line, ft.  
(Also to nearest drig. unit line, if any)

10'

16. No. of acres in lease  
SL:312.97; BL:12017. Spacing Unit dedicated to this well  
157.1718. Distance from proposed location\*  
to nearest well, drilling, completed,  
applied for, on this lease, ft.

32'

19. Proposed Depth  
TVD: 5424' MD: 10144'20. BLM/BIA Bond No. on file  
NMB000740; NMB00021521. Elevations (Show whether DF, KDB, RT, GL, etc.)  
3686' GL22. Approximate date work will start\*  
07/30/201323. Estimated duration  
15 Days

## 24. Attachments

The following, completed in accordance with the requirements of Onshore Oil and Gas Order No. 1, must be attached to this form:

1. Well plat certified by a registered surveyor.

2. A Drilling Plan.

3. A Surface Use Plan (if the location is on National Forest System Lands, the  
SUPO must be filed with the appropriate Forest Service Office).4. Bond to cover the operations unless covered by an existing bond on file (see  
Item 20 above).

5. Operator certification

6. Such other site specific information and/or plans as may be required by the  
BLM.

25. Signature

Name (Printed/Typed)

Robyn M. Odom

Date

05/15/2013

Title

Regulatory Analyst

Approved by (Signature)

/s/George MacDonell

Name (Printed/Typed)

/s/George MacDonell

Date

JUL 29 2013

Title

FIELD MANAGER

Office

CARLSBAD FIELD OFFICE

Application approval does not warrant or certify that the applicant holds legal or equitable title to those rights in the subject lease which would entitle the applicant to  
conduct operations thereon.  
Conditions of approval, if any, are attached.

APPROVAL FOR TWO YEARS

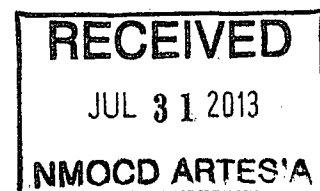
Title 18 U.S.C. Section 1001 and Title 43 U.S.C. Section 1212, make it a crime for any person knowingly and willfully to make to any department or agency of the United  
States any false, fictitious or fraudulent statements or representations as to any matter within its jurisdiction.

(Continued on page 2)

Roswell Controlled Water Basin

SEE ATTACHED FOR  
CONDITIONS OF APPROVALApproval Subject to General Requirements  
& Special Stipulations Attached

Closed loop System - Surface Use Plan - p.5



District I  
 1625 N. Branch Dr., Hobbs, NM 88240  
 Phone (505) 393-6161 Fax (505) 393-6170  
 District II  
 8118 First St., Artesia, NM 88210  
 Phone (505) 748-1283 Fax (505) 748-1270  
 District III  
 1900 E. 8th Street, Alamogordo, NM 88410  
 Phone (505) 734-6178 Fax (505) 734-6179  
 District IV  
 1220 S. St. Francis Dr., Santa Fe, NM 87505  
 Phone (505) 476-3460 Fax (505) 476-3462

State of New Mexico  
 Energy, Minerals & Natural Resources Department  
**OIL CONSERVATION DIVISION**  
 1220 South St. Francis Dr.  
 Santa Fe, NM 87505

Form C-102  
 Revised August 1, 2011  
 Submit one copy to appropriate  
 District Office

☐ AMENDED REPORT

**WELL LOCATION AND ACREAGE DEDICATION PLAT**

<sup>1</sup> API Number 30-015- <b>41584</b>	<sup>2</sup> Pool Code 96718	<sup>3</sup> Pool Name Loco Hills; Glorieta Yeso
<sup>4</sup> Property Code <b>40051</b>	<sup>5</sup> Property Name CHIMAY 6 FED. COM. LBB	<sup>6</sup> Well Number 5H
<sup>7</sup> OGRIN No. 229137	<sup>8</sup> Operator Name COG OPERATING, LLC	<sup>9</sup> Elevation 3686'

**<sup>10</sup> Surface Location**

UL or lot no.	Section	Township	Range	Lot Idn	Feet from the	North/South line	Feet from the	East/West line	County
I	1	17-S	29-E		2310	SOUTH	10	EAST	EDDY

**<sup>11</sup> Bottom Hole Location If Different From Surface**

UL or lot no.	Section	Township	Range	Lot Idn	Feet from the	North/South line	Feet from the	East/West line	County
I	6	17-S	30-E		2301	SOUTH	330	EAST	EDDY

<sup>12</sup> Dedicated Acres 157.17	<sup>13</sup> Joint or Infill 145.83	<sup>14</sup> Consolidation Code	<sup>15</sup> Order No.
---	---	----------------------------------	-------------------------

No allowable will be assigned to this completion until all interests have been consolidated or a non-standard unit has been approved by the division.

<p><b>16</b></p>				<p><b>17 OPERATOR CERTIFICATION</b>          I hereby certify that the information contained herein is true and complete to the best of my knowledge and belief, and that this organization either owns a working interest or selected mineral interest in the land including the proposed bottom hole location or has a right to drill this well at this location pursuant to a contract with an owner of such a mineral or working interest, or to a voluntary pooling agreement or a compulsory pooling order heretofore entered by the division.          Signature: <i>Kelly J. Holly</i>          Date: 5-15-13       </p>	
<p><b>18 SURVEYOR CERTIFICATION</b>          I hereby certify that the well location shown on this plat was plotted from field notes of actual surveys made by me or under my supervision, and that the same is true and correct to the best of my belief.          Date of Survey: 2/26/13          Signature and Seal of Professional Surveyor: <i>Robert M. Howell</i>          Certificate Number: 19680          Revised: 5/2/13       </p>				<p><b>19 CORNER DATA</b>          NAD 27 GRID - NM EAST          A: BRASS CAP "1914"          N 675322.5 - E 591200.4          B: BRASS CAP "1914"          N 677961.6 - E 591193.9          C: BRASS CAP "1914"          N 680599.9 - E 591196.5          D: BRASS CAP "1914"          N 680602.4 - E 593835.9          E: BRASS CAP "1914"          N 680602.3 - E 596475.6          F: BRASS CAP "1914"          N 677961.9 - E 596474.4          G: BRASS CAP "1914"          N 675324.2 - E 596474.6       </p>	
<p><b>20 GEODETIC DATA</b>          NAD 27 GRID - NM EAST          SURFACE LOCATION          N 677633.6 - E 596464.3          LAT: 32.862504° N          LONG: 104.013177° W          BOTTOM LOCATION          N 677654.7 - E 601331.2       </p>				<p><b>21 DETAIL "A"</b>  </p>	

Surface Use Plan  
COG Operating, LLC  
Chimay 6 Fed Com LBB #5H  
SL: 2310' FSL & 10' FEL      UL I  
Section 1, T-17-S, R-29-E  
BHL: 2301' FSL & 330' FEL      UL L  
~~Section 6, T-17-S, R-30-E~~  
Eddy County, New Mexico

---

I hereby certify that I, or persons under my direct supervision, have inspected the drill site and access road proposed herein; that I am familiar with the conditions that presently exist; that I have full knowledge of State and Federal laws applicable to this operation; that the statements made in this APD package are, to the best of my knowledge, true and correct; and that the work associated with the operations proposed herein will be performed in conformity with this APD package and the terms and conditions under which it is approved. I also certify that I, or COG Operating, LLC, am responsible for the operations conducted under this application. These statements are subject to the provisions of 18 U.S.C. 1001 for the filing of false statements. Executed this 16th day of April, 2013.

Signed: Carl Bird

Printed Name: Carl Bird

Position: Sr. Drilling Engineer

Address: One Concho Center, 600 W. Illinois, Midland, Texas 79701

Telephone: (432) 683-7443

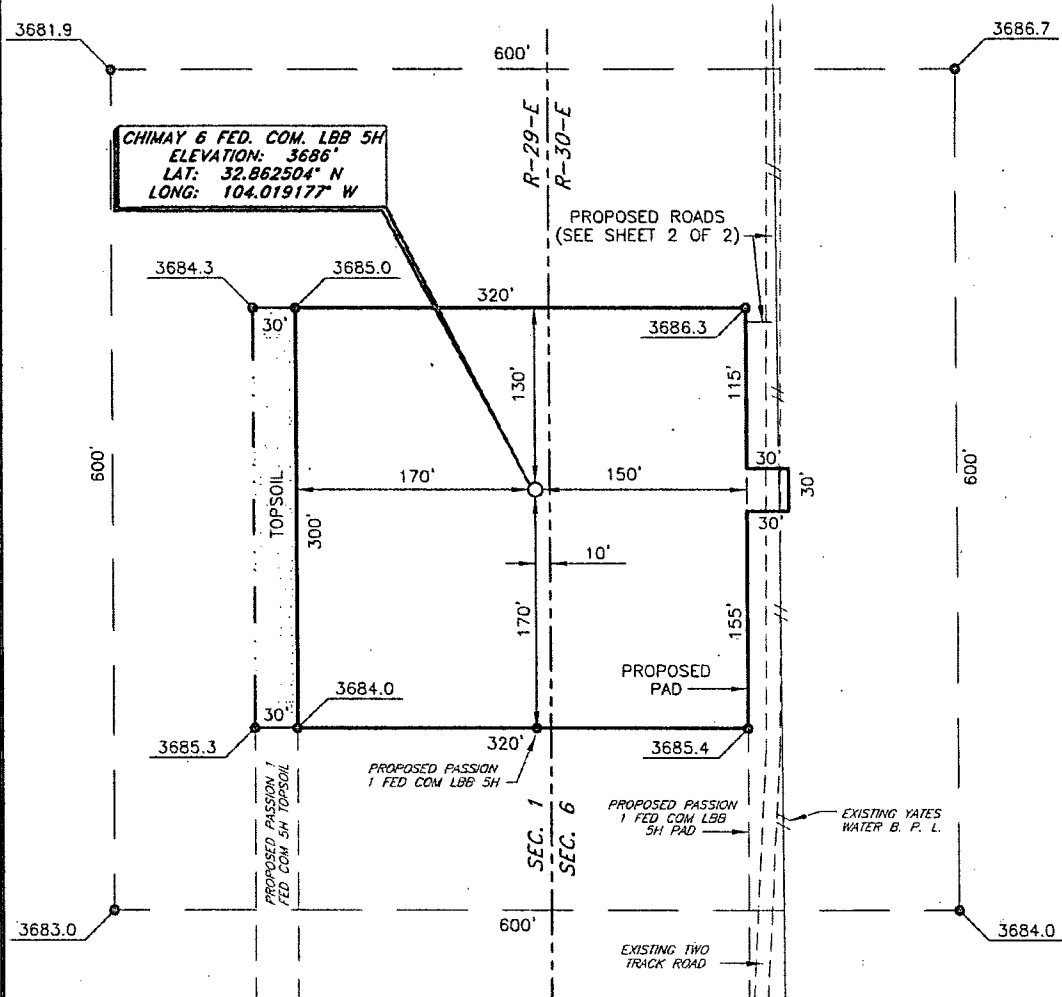
Field Representative (if not above signatory): Same

E-mail: cbird@concho.com

# COG OPERATING, LLC

CHIMAY 6 FED COM LBB 5H  
(2310' FSL & 10' FEL)

Section 1; T-17-S; R-29-E,  
N. M. P. M., Eddy Co., New Mexico



## DIRECTIONS TO LOCATION

From the intersection of Co. Rd. No. 215 (Kewanee)  
& Co. Rd. No. 257 (Mallet Rd.);

Go East on Co. Rd. No. 257 approx. 1.0 mile;

Turn right onto a lease road;

Follow lease road (becoming a two track road)  
South approx. 0.6 mile;

Location is approx. 165 feet West of two track road.

SCALE: 1" = 100'  
0 50 100  
BEARINGS ARE  
NAD 27 - NM EAST  
DISTANCES ARE  
GROUND.

Copyright 2012 - All Rights Reserved

1	Well Name	5/2/13
NO.	REVISION	DATE
JOB NO.:	LS130078	
DWG. NO.:	130078PAD	

PROSPERITY CONSULTANTS, LLC



2251 Double Creek Drive, Suite 602, Round Rock, Texas 78664

o (512) 992-2087 f (512) 251-2518

SCALE: 1" = 100'

DATE: 2/26/13

SURVEYED BY: GB/SM

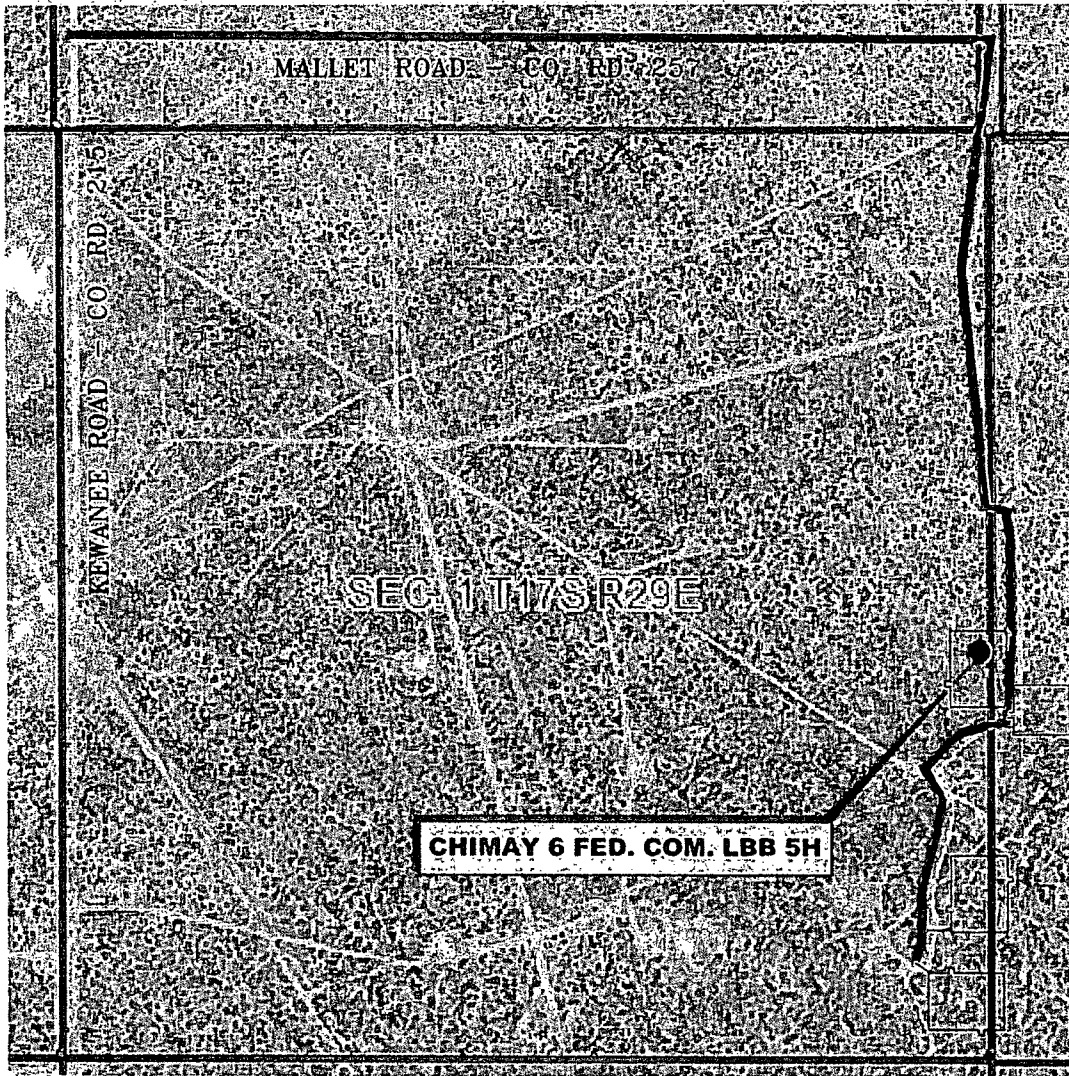
DRAWN BY: LWB

APPROVED BY: LWB

SHEET : 1 OF 2

# VICINITY MAP

NOT TO SCALE



SECTION 1, TWP. 17 SOUTH, RGE. 29 EAST,  
N. M. P. M., EDDY COUNTY, NEW MEXICO

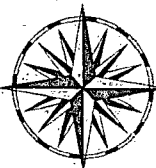
OPERATOR: COG Operating, LLC  
 LEASE: Chimay 6 Fed. Com. LBB  
 WELL NO.: 5H

LOCATION: 2310' FSL & 10' FEL  
 ELEVATION: 3686'

Copyright 2012 - All Rights Reserved

1	Well Name	5/2/13
NO.	REVISION	DATE
JOB NO.: LS130078		
DWG. NO.: 130078VM		

PROSPERITY CONSULTANTS, LLC

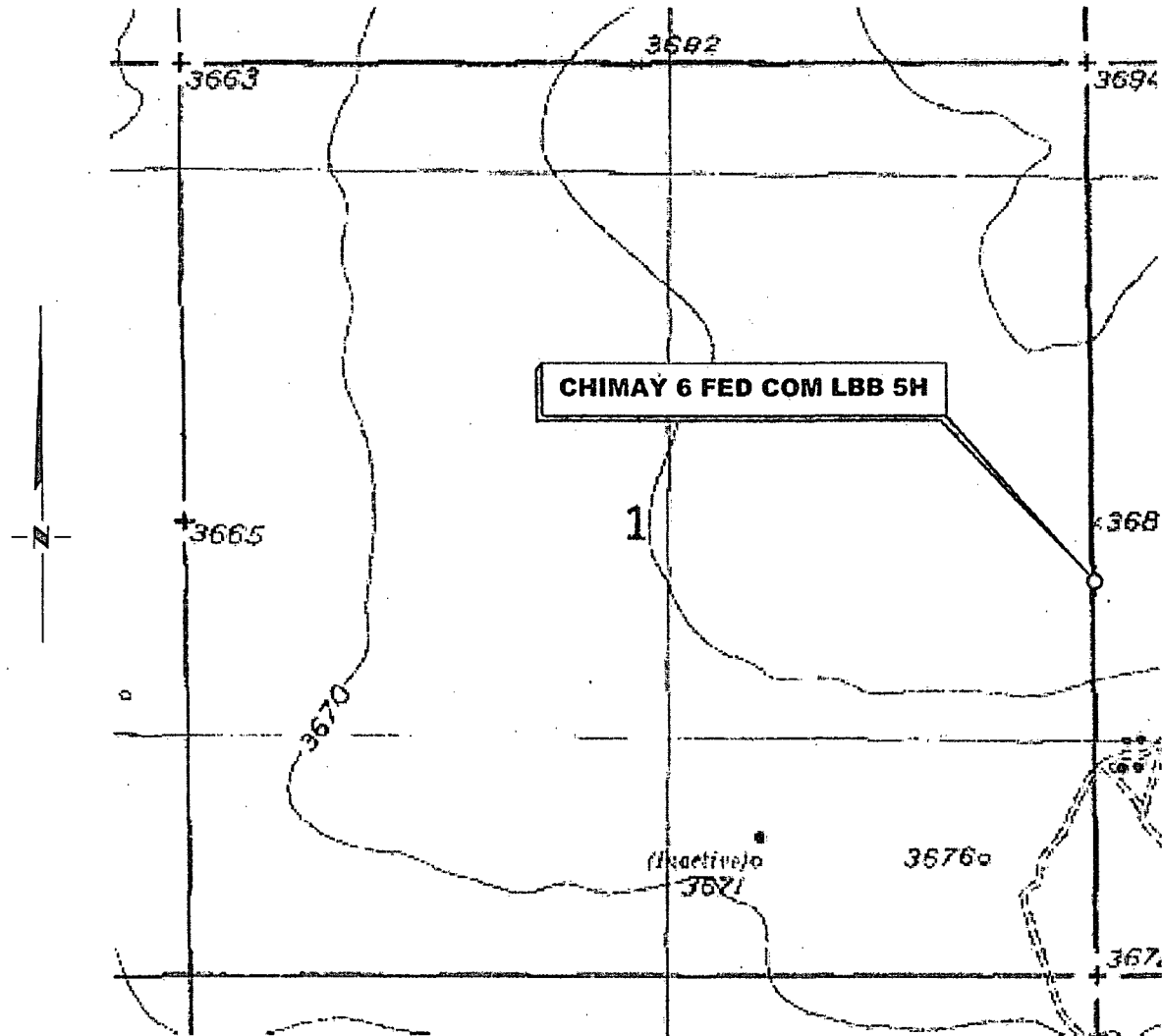


2251 Double Creek Drive, Suite 602, Round Rock, Texas 78664

o (512) 992-2087 f (512) 251-2518

SCALE: 1" = 1000'
DATE: 2/26/13
SURVEYED BY: GB/SM
DRAWN BY: LWB
APPROVED BY: LWB
SHEET : 1 OF 1

# LOCATION VERIFICATION MAP



SECTION 1, TWP. 17 SOUTH, RGE. 29 EAST,  
N. M. P. M., EDDY COUNTY, NEW MEXICO

OPERATOR: COG Operating, LLC  
LEASE: Chimay 6 Fed. Com. LBB  
WELL NO.: 5H  
ELEVATION: 3686'

LOCATION: 2310' FSL & 10' FEL  
CONTOUR INTERVAL: 10'  
USGS TOPO. SOURCE MAP:  
Red Lake SE, NM (1955)

Copyright 2012 - All Rights Reserved

1	Well Name	5/2/13
NO.	REVISION	DATE
JOB NO.: LS130078		
DWG. NO.: 130078LVM		

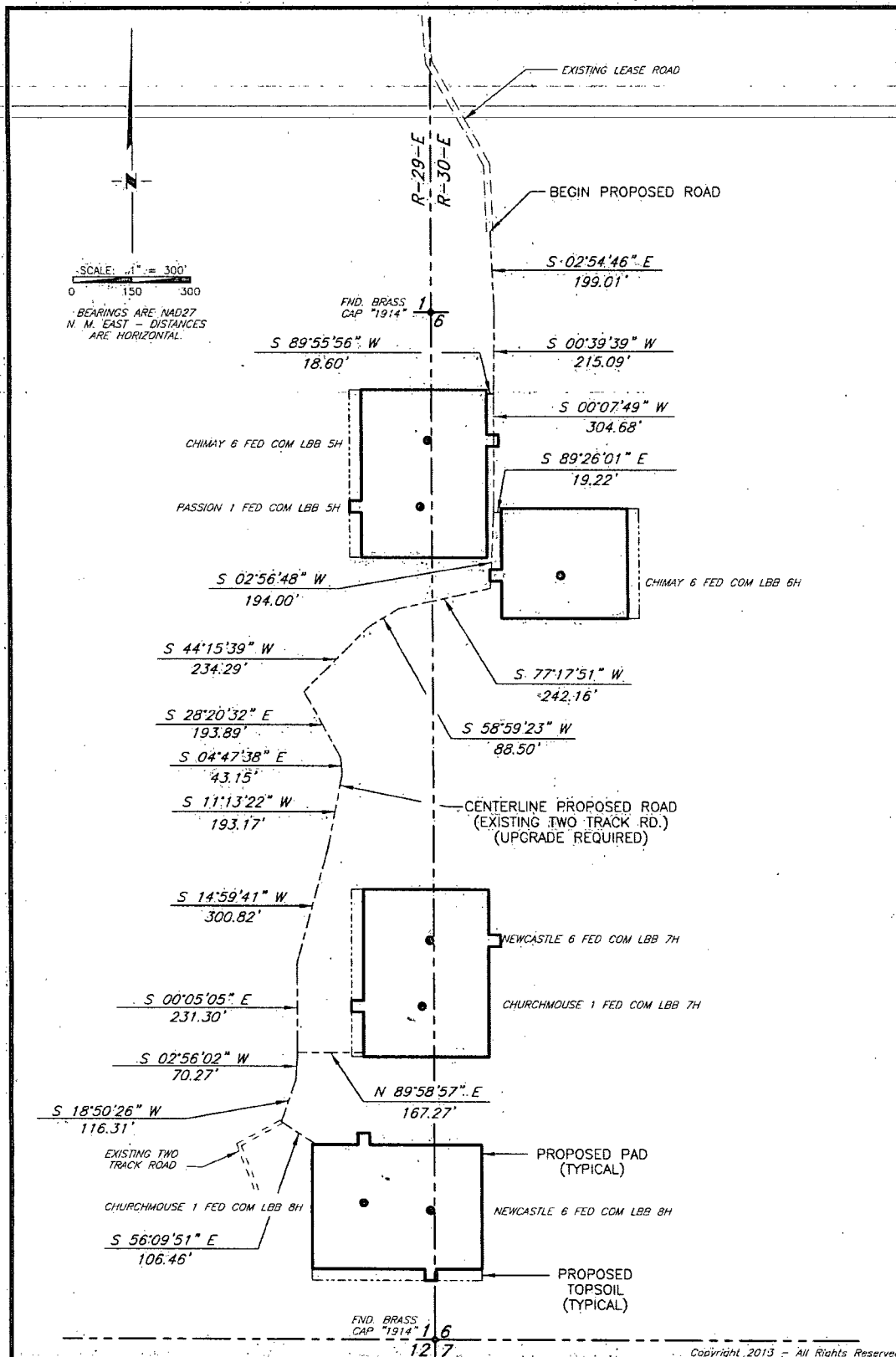
PROSPERITY CONSULTANTS, LLC



2251 Double Creek Drive, Suite 602, Round Rock, Texas 78664

o (512) 992-2087 f (512) 251-2518

SCALE: 1" = 1000'
DATE: 2/26/13
SURVEYED BY: GB/SM
DRAWN BY: LWB
APPROVED BY: LWB
SHEET : 1 OF 1



Copyright, 2013 - All Rights Reserved

NO.	REVISION	DATE
1	Well Name	5/2/13
	REVISION	DATE
	JOB. NO.:	LS130078
	DWG. NO.:	130078PAD2

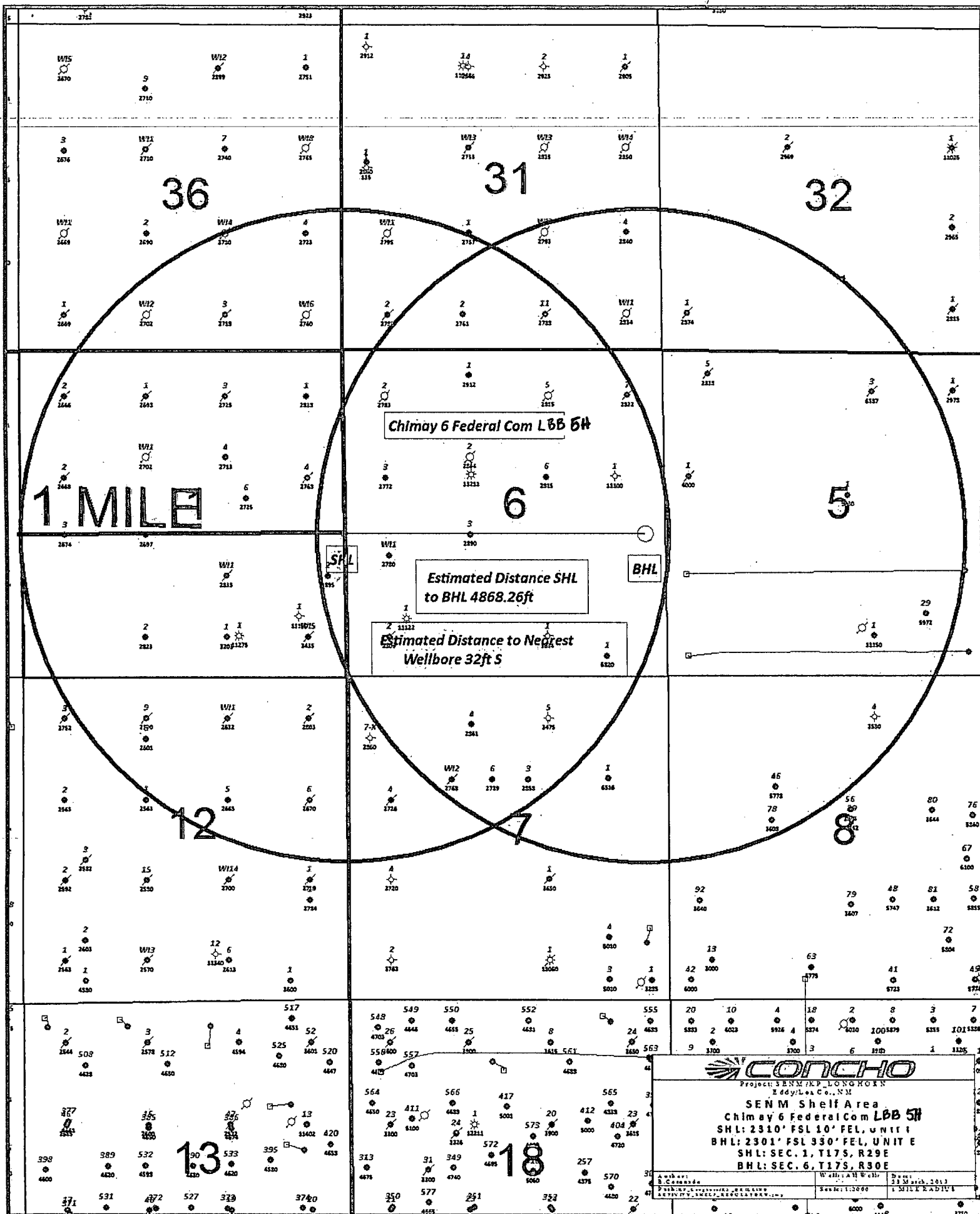
PROSPERITY CONSULTANTS, LLC



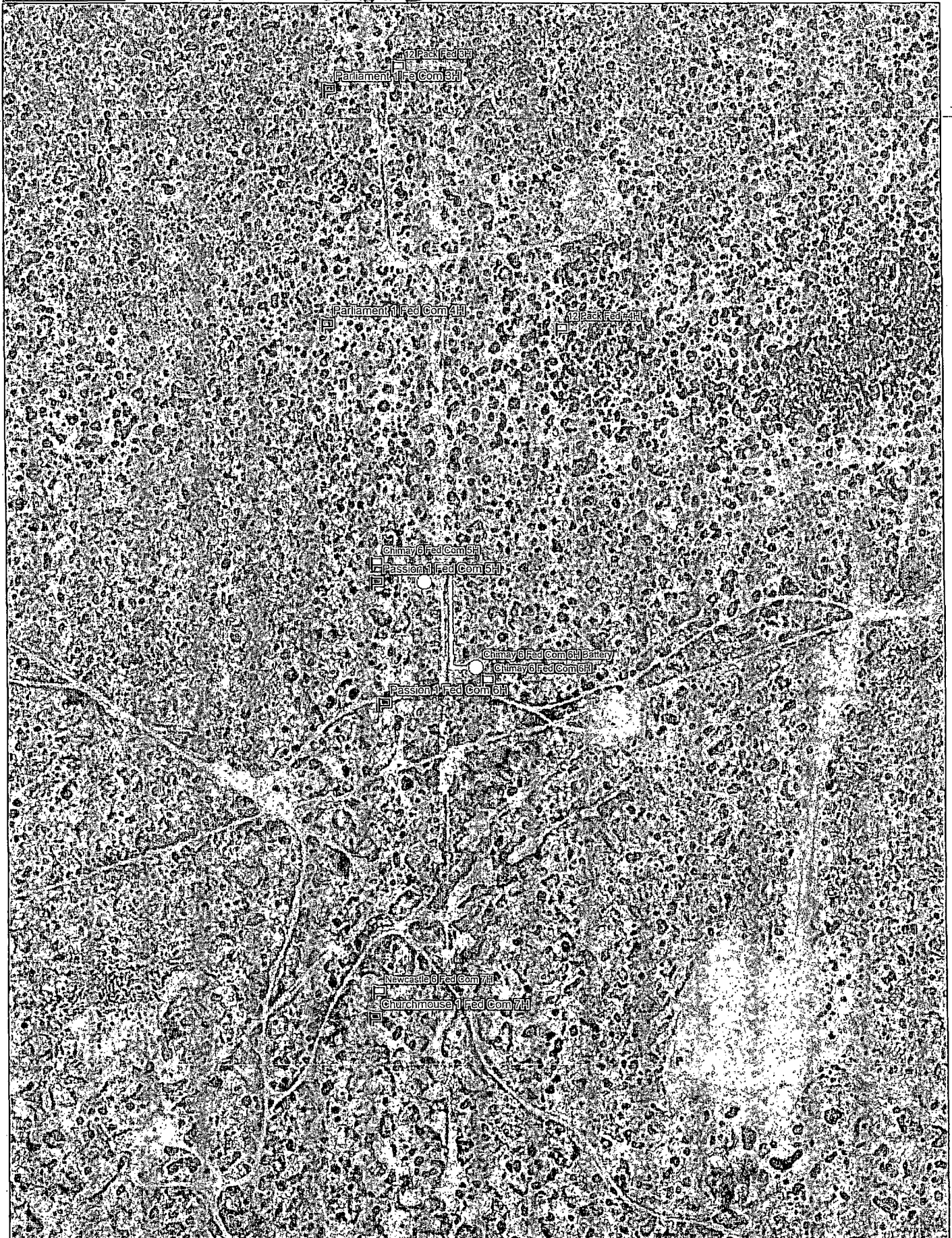
2251 Double Creek Drive, Suite 602, Round Rock, Texas 78664

(512) 992-2087 / (512) 251-2518

SCALE: 1" = 300'
DATE: 2/26/13
SURVEYED BY: GB/SM
DRAWN BY: LWB
APPROVED BY: LWB
SHEET: 2 OF 2



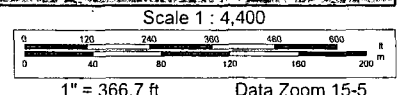




Data use subject to license.

© DeLorme. XMap® 7.

www.delorme.com



ATTACHMENT TO FORM 3160-3  
COG Operating, LLC  
CHIMAY 6 FEDERAL COM LBB #5H  
SHL: 2310' FSL & 10' FEL, Unit I  
Sec 1, T17S, R29E  
BHL: 2301' FSL & 330' FEL, Unit I  
Sec 6, T17S, R30E  
Eddy County, NM

1. Proration Unit Spacing: 160 Acres
2. Ground Elevation: 3686'
3. Proposed Depths: Horizontal: **EOC (end of curve) TVD=5500' MD=5806'**  
**Toe (end of lateral) TVD=5424' MD=10144'**
4. Estimated tops of geological markers:

Fresh Water	no fresh water
Rustler	325'
Top of Salt	600'
Base of Salt	1060'
Yates	1180'
Seven Rivers	1460'
Queen	2080'
Grayburg	2506'
San Andres	2781'
Glorieta	4196'
Paddock	4240'
Blaine	4628'
Tubb	5672'

5. Possible mineral bearing formations:

Grayburg	2506'	Oil/Gas
San Andres	2781'	Oil/Gas
Glorieta	4196'	Oil/Gas
Paddock	4240'	Oil/Gas
Blaine	4628'	Oil/Gas
Tubb	5672'	Oil/Gas

1150' — No other formations are expected to give up oil, gas or fresh water in measurable quantities. Setting 13 3/8" casing to 350' (25' into Rustler) and circulating cement back to the surface will protect the surface fresh water sand. The Salt Section will be protected by setting 9 5/8" casing to 1200' and circulating cement back to surface in a single or multi-stage job and/or with an ECP. Any shallower zones between the 9 5/8" casing shoe and TD, which contain commercial quantities of oil and/or gas, will have cement circulated across them in either a single or multi-stage cement jobs. The production casing will be a tapered string 7" X 5 1/2". The 5 1/2" will be cemented from TD back to KOP and the 7" will be cemented from KOP back to a minimum of 200' into the intermediate casing; although, cement volume is actually calculated to surface. If wellbore conditions arise that require immediate action and/or a change to this program, COG Operating LLC personnel will always react to protect the wellbore and/or environment.

see  
COA

**ATTACHMENT TO FORM 3160-3**  
**COG Operating, LLC**  
**CHIMAY 6 FEDERAL COM LBB #5H**  
 Page 2 of 7

**6. Proposed Mud System**

The well will be drilled to TD with a combination of fresh water, brine, cut brine and polymer mud systems. The applicable depths and properties of these systems are as follows:

See COA

DEPTH (MD)	TYPE	WEIGHT	VISCOSITY	WATERLOSS
0-350' 1150'	Fresh Water	8.5	28	N.C.
350'-1200'	Brine	10	30	N.C.
1200'-4979'	Cut Brine	8.7-9.2	30	N.C.
4979'-5806'	Cut Brine/polymer mud	8.7-9.2	30	N.C.
5806'-10144'	Cut Brine/polymer mud	8.7-9.2	30	N.C.

Sufficient mud materials will be kept at the well site to maintain mud properties and meet minimum lost circulation and weight increase requirements at all times.

Visual or electronic mud monitoring equipment shall be in place to detect volume changes indicating loss or gain of circulating fluid volume.

The mud program has been designed to minimize the volume of H<sub>2</sub>S circulated to surface. Proper mud weights, safe drilling practices and the use of H<sub>2</sub>S scavengers will minimize hazards when penetrating H<sub>2</sub>S bearing zones.

**6. Proposed Casing Program**

See COA

Hole Size	Interval MD	OD Casing	Weight	Grade	Condition	Jt.	brst/clps/ten
17 1/2"	0-350'	13 3/8" 0-350'	48#	H-40/J-55 Hybrid	New	ST&C	4.40/4.42/19.62
12 1/4"	350'-1200' 1150'	9 5/8" 0-1200' 1150'	40#	J/K-55	New	LT&C	3.95/3.16/12.24
8 3/4"	1200'-4979'	7" 0-4979'	26#	L-80	New	LT&C	1.45/2.74/5.54
8 3/4"	4979'-5806'	5 1/2" 4979'-5806'	17#	L-80	New	LT&C	1.55/2.86/5.03
7 7/8"	5806'-10144'	5 1/2" 5806'-10144'	17#	L-80	New	LT&C	1.55/2.86/5.03

Production string will be a tapered string with 7" 26# L-80 LTC run from surface to kick off point (4979') and then crossed over to 5 1/2" 17# L-80 LTC.

## 7. Proposed Cement Program

### 13 3/8" SURFACE: (Circulate to Surface)

Lead: 0'-350'	450 sks	Class "C" w/2% CaCl <sub>2</sub>	1.32 cf/sk	14.8 ppg
Excess 113%		+ 0.25 pps CF		

### 9 5/8" INTERMEDIATE:

#### **Option #1: Single Stage (Circulate to Surface)**

Lead: 0'-800'	300 sks	50:50:10 C:Poz:Gel w/ 5% Salt+ 0.25% CF+ 5 pps LCM	2.45 cf/sk	11.8 ppg
Excess 170%				

Tail: 1150' 800'-1200'	200 sks	Class C w/2% CaCl <sub>2</sub>	1.32 cf/sk	14.8 ppg
Excess 86%				

#### **Option #2: Multi-stage w/ DV Tool @ +/-400 (DV Tool 50' below 13 3/8" csg. Shoe)** (Circulate to Surface)

##### **Stage #1:**

Lead: 400'-800'	100 sks	50:50:10 C:Poz:Gel w/5% Salt+0.25% CF+5 pps LCM	2.45 cf/sk	11.8 ppg
Excess 96%				

Tail: 1150' 800'-1200'	200 sks	Class "C" w/2% CaCl <sub>2</sub>	1.32 cf/sk	14.8 ppg
Excess 86%				

##### **Stage #2**

0'-400'	200 sks	50:50:10 C:Poz:Gel w/5% salt+ 0.25% CF + 5 pps LCM	2.45 cf/sk	11.8 ppg
Excess 232%				

Note: Multi-stage tool to be set depending on hole conditions at approximately 400' (50' below the surface casing shoe). Cement volumes will be adjusted proportionately for depth changes of multi-stage tool.

**7" X 5 1/2" TAPERED PRODUCTION CASING:**

**Option #1: Single Stage (Cement cal to Surface)**

**1st Lead:**

(7" casing x 8 3/4" OH) 0'-3400' (min. tie back 200' above 9 5/8" shoe) Excess 93%	500 sks	35:65:6 C:Poz Gel w/5% salt+ 5 pps LCM+ 0.2 % SMS+ 0.3% FL-52A+ 0.125 pps CF+1 % BA-58+ 1% FL-25	2.01 cf/sk	12.5 ppg
--	---------	--	------------	----------

**2<sup>nd</sup> Lead:**

(7" casing x 8 3/4" OH) 3400'-4979' Excess 131%	400 sks	50:50:2 C:Poz Gel w/5% salt+ 3 pps LCM+ 0.6 % SMS+ 0.3% FL-52A+ 0.125 pps CF+1% FL-25+ 1% BA-58	1.37 cf/sk	14.0 ppg
---	---------	---	------------	----------

**Tail:**

**Curve \***

(5 1/2" casing x 8 3/4" OH) 4979'-5806'	75 sks	Class "H" SOLUCEM-H W/0.7% HR-601	2.62 cf/sk	15.0 ppg
--	--------	--------------------------------------	------------	----------

**Lateral \***

(5 1/2" casing x 7 7/8" OH) 5806'-10144'	275 sks	Class "H" SOLUCEM-H W/0.7% HR-601	2.62 cf/sk	15.0 ppg
---	---------	--------------------------------------	------------	----------

\* Combined Excess -5%

**Option #2: Multi-stage (3 Stages)**

**Stage #1: TD to KOP w/DV Tool & ECP @ +/-4979'**

**Tail:**

**Curve \***

(5 1/2" casing x 8 3/4" OH) 4979'-5806'	125 sks	Class "H" SOLUCEM-H W/0.7% HR-601	2.62 cf/sk	15.0 ppg
--	---------	--------------------------------------	------------	----------

**Lateral \***

(5 1/2" casing x 7 7/8" OH) 5806'-10144'	275 sks	Class "H" SOLUCEM-H W/0.7% HR-601	2.62 cf/sk	15.0 ppg
---	---------	--------------------------------------	------------	----------

\* Combined Excess 9%

ATTACHMENT TO FORM 3160-3  
COG Operating, LLC  
CHIMAY 6 FEDERAL COM LBB #5H  
Page 5 of 7

Stage #2:

See COA

DV Tool & ECP @ +/- 4979' to 2nd DV Tool @ 1250' (50' below 9 5/8" csg shoe)

Lead:

(7" casing x 8 3/4" OH) 1250'-3400'	250 sks	35:65:2 C:Poz Gel w/5% salt+ 5 pps LCM+ 0.2 % SMS+ 0.3% FL-52A+ 0.125 pps CF+1% BA-58+ 1% FL-25	2.01 cf/sk	12.5 ppg
Excess 55%				

Tail:

(7" casing x 8 3/4" OH) 3400'-4979'	400 sks	50:50:2 C:Poz Gel w/5% salt+ 3 pps LCM+ 0.6 % SMS+ 0.3% FL-52A+ 0.125 pps CF+1% FL-25+ 1% BA-58	1.37 cf/sk	14.0 ppg
Excess 131%				

Stage #3:

See COA

2<sup>nd</sup> DV Tool @ 1250' (50' below 9 5/8" csg shoe) to surface (Cement cal to surface)

Lead:

(7" casing x 8 3/4" OH) 0'-1250'	250 sks	35:65:2 C:Poz Gel w/5% salt+ 5 pps LCM+ 0.2 % SMS+ 0.3% FL-52A+ 0.125 pps CF+1% FL-25+ 1% BA-58	2.01 cf/sk	12.5 ppg
(min. tie back 200' above 9 5/8" shoe)				
Excess 154%				

Note: 7 " casing will be run from surface to KOP and crossed over to 5 1/2". 5 1/2" casing will be run from KOP at 4979' thru curve and lateral to TD of 10144' MD. Productive intervals will be isolated by cement as described above.

Note: Assumption for 2nd DV tool is water flow. Multi-stage tool to be set depending on hole conditions at approximatedly 1250'. Cement volumes will be adjusted proportionately for depth changes of multi-stage tool.

See COA

ATTACHMENT TO FORM 3160-3  
COG Operating, LLC  
CHIMAY 6 FEDERAL COM LBB #5H  
Page 6 of 7

8. Pressure Control Equipment:

The blowout preventer equipment (BOP) shown in Exhibit #9 will consist of a 13 5/8" double ram-type (2000 psi WP) preventer, and in some cases possibly a 13 5/8" 2000 psi Hydril type annular preventer as provided for in Onshore Order #2. These units will be hydraulically operated and the ram type preventer will be equipped with blind rams on top and 4 1/2" drill pipe rams on the bottom. A 13 5/8" 3M x 13 3/8" 3M SOW permanent casing head will be installed on the 13 3/8" casing. The BOP will be nipped up on the 13 5/8" permanent casing head and tested by independent tester. Test plug will be used and BOP tested to 250-300 psig low pressure and 2000 psig high pressure for 10 minutes. After setting 9-5/8", permanent "B section" well head will be installed and the BOP will then be nipped up on the permanent B section. BOP and well head will be tested by again by a third party. Test plug will be used and BOP tested to 250-300 psig low pressure and 2000 psig high pressure for 10 minutes. BOP stack will be used continuously until total depth is reached. Pipe rams will be operationally checked each 24-hour period. Blind rams will be operationally checked on each trip out of the hole. These checks will be noted on the daily tour sheets. Other accessories to the BOP equipment will include a Kelly cock and floor safety valve, choke lines and a choke manifold with a 2000 psi WP rating all of which will also be tested to working pressure by independent tester also. Any time a component of the BOP stack or choke manifold is changed or installed BOPE will be partially re-tested as required.

See  
COG

All casing strings below the conductor shall be pressure tested to 0.22 psi per foot of casing string depth or 1500 psig, whichever is greater, but not to exceed 70 percent of casing's minimum internal yield. If pressure declines more than 10 percent in 30 minutes, corrective action will be taken.

9. Production Hole Drilling Summary:

**Drill 8 3/4" hole and kick off at +/- 4979', building curve at 11°/100' over +/- 827' to horizontal at 5806' MD/ 5500' TVD Az 91.00°. AT 5806' reduce hole to 7 7/8". Drill 7 7/8" lateral section turning at 3°/100' to azi 89.59. Continue this azimuth and inclination in a easterly direction for +/-4338' lateral to TD at +/-10144' MD, 5424' TVD. Run 7" x 5-1/2" production casing. 7" to be run from surface to kickoff point and then changed over to 5 1/2". 5 1/2" casing will be run from kickoff point thru curve and lateral to TD. Both strings will be cemented in single stage. Cement volumes will be calculated to surface.**

10. Auxiliary Well Control and Monitoring Equipment

- A. Kelly cock will be kept in the drill string at all times.
- B. A full opening drill pipe-stabbing valve with proper drill pipe connections will be on the rig floor at all times.

11. Logging, Testing and Coring Program:

See COG

- A. The following logs will be run in the vertical portion of the hole to KOP: SLB-PEX/HRLA, HNGS.
- B. The mud logging program will consist of lagged 10' samples from KOP to TD in Horizontal hole.
- C. Drill Stem test is not anticipated.
- D. No conventional coring is anticipated.
- E. Further testing procedures will be determined after the 7" x 5 1/2" production casing has been cemented at TD based on drill shows and log evaluation.

ATTACHMENT TO FORM 3160-3  
COG Operating, LLC  
CHIMAY 6 FEDERAL COM LBB #5H

Page 7 of 7

12. Abnormal Conditions, Pressures, Temperatures and Potential Hazards:

52  
COA

No abnormal pressures or temperatures are anticipated. The estimated bottom hole temperature at TD is 92° Fahrenheit and estimated maximum bottom hole pressure is 2420 psi. Wells in the Loco Hills area will penetrate formations that are known or could reasonably be expected to contain hydrogen sulfide. Measurable gas volumes or hydrogen sulfide levels have not been encountered during drilling operations in this area; however, a H2S drilling operations plan is included with this APD. If H2S concentrations exceed 100 ppm a remote operated choke will be installed (see diagram #8 & #9) and COG will comply with the specifics of Onshore Order #6. All BOPE testing companies used by COG have H2S certified employees and will work on H2S locations. No major loss circulation zones have been reported in offsetting wells.

13. Anticipated Starting Date

Drilling operations will commence approximately on July 30, 2013 with drilling and completion operations lasting approximately 90 days.

GEG/5.23.13



# Plan Proposal

FOR

COG Operating, LLC  
Chimay 6 Federal Com LBB #5H  
Eddy Co., NM

Design #1

Presented By:

---

Aaron Boger  
Account Manager

---

Bret Wolford  
Well Planner

**SHL**

2310' FSL & 10' FEL

Sec.1-T17S-R29E

**Penetration Point**

2301' FSL & 330' FWL

**PBHL**

2301' FSL & 330' FEL

Sec.6-T17S-R30E

WATER



# **COG Operating, LLC**

**Eddy County(NM27E)**

**Sec.6-T17S-R30E**

**Chimay 6 Federal Com LBB #5H**

**Wellbore #1**

**Plan: Design #1**

## **Standard Planning Report**

**14 May, 2013**

# **Archer**

Database:	EDM 5000.1 Single User Db	Local Co-ordinate Reference:	Well Chimay 6 Federal Com LBB #5H
Company:	COG Operating, LLC	TVD Reference:	WELL @ 3700.00usft
Project:	Eddy County(NM27E)	MD Reference:	WELL @ 3700.00usft
Site:	Sec.6-T17S-R30E	North Reference:	Grid
Well:	Chimay 6 Federal Com LBB #5H	Survey Calculation Method:	Minimum Curvature
Wellbore:	Wellbore #1		
Design:	Design #1		

Project	Eddy County(NM27E)		
Map System:	US State Plane 1927 (Exact solution)	System Datum:	Mean Sea Level
Geo Datum:	NAD 1927 (NADCON CONUS)		
Map Zone:	New Mexico East 3001		

Site	Sec.6-T17S-R30E		
Site Position:		Northing:	678,293.700 usft
From:	Map	Easting:	596,804.400 usft
Position Uncertainty:	0.00 usft	Slot Radius:	13-3/16"
		Latitude:	32° 51' 51.534 N
		Longitude:	104° 1' 5.028 W
		Grid Convergence:	0.17 °

Well	Chimay 6 Federal Com LBB #5H		
Well Position	+N/-S	-660.10 usft	Northing:
	+E/-W	-340.10 usft	Easting:
Position Uncertainty	0.00 usft	Wellhead Elevation:	usft
		Latitude:	32° 51' 45.013 N
		Longitude:	104° 1' 9.038 W
		Ground Level:	3,686.00 usft

Wellbore	Wellbore #1		
Magnetics	Model Name	Sample Date	Declination
			(°)
	Dip Angle	Field Strength	
	(°)	(nT)	
	IGRF2010	05/14/13	7.61
			60.65
			48,758

Design	Design #1		
Audit Notes:			
Version:	Phase:	PLAN	Tie On Depth:
			0.00
Vertical Section:	Depth From (TVD)	+N/-S	+E/-W
	(usft)	(usft)	(usft)
	5,424.30	0.00	0.00
			Direction
			(°)
			89.75

Plan Sections										
Measured Depth (usft)	Inclination (°)	Azimuth (°)	Vertical Depth (usft)	+N/-S (usft)	+E/-W (usft)	Dogleg Rate (°/100usft)	Build Rate (°/100usft)	Turn Rate (°/100usft)	TFO (°)	Target
0.00	0.00	0.00	0.00	0.00	0.00	0.00	0.00	0.00	0.00	
4,979.21	0.00	0.00	4,979.21	0.00	0.00	0.00	0.00	0.00	0.00	
5,806.48	91.00	91.00	5,500.00	-9.25	529.88	11.00	11.00	0.00	91.00	
5,853.56	91.00	89.59	5,499.18	-9.49	576.95	3.00	0.00	-3.00	-89.99	Chimay 6 Fed Com LI
10,144.17	91.00	89.59	5,424.30	21.40	4,866.80	0.00	0.00	0.00	0.00	Chimay 6 Fed Com LI

Database:	EDM 5000.1 Single User.Db	Local Co-ordinate Reference:	Well Chimay 6 Federal Com LBB #5H
Company:	COG Operating, LLC	TVD Reference:	WELL @ 3700.00usft
Project:	Eddy County(NM27E)	MD Reference:	WELL @ 3700.00usft
Site:	Sec.6-T17S-R30E	North Reference:	Grid
Well:	Chimay 6 Federal Com LBB #5H	Survey Calculation Method:	Minimum Curvature
Wellbore:	Wellbore #1		
Design:	Design #1		

Planned Survey									
Measured Depth (usft)	Inclination (°)	Azimuth (°)	Vertical Depth (usft)	+N/-S (usft)	+E/-W (usft)	Vertical Section (usft)	Dogleg Rate (°/100usft)	Build Rate (°/100usft)	Turn Rate (°/100usft)
0.00	0.00	0.00	0.00	0.00	0.00	0.00	0.00	0.00	0.00
100.00	0.00	0.00	100.00	0.00	0.00	0.00	0.00	0.00	0.00
200.00	0.00	0.00	200.00	0.00	0.00	0.00	0.00	0.00	0.00
300.00	0.00	0.00	300.00	0.00	0.00	0.00	0.00	0.00	0.00
400.00	0.00	0.00	400.00	0.00	0.00	0.00	0.00	0.00	0.00
500.00	0.00	0.00	500.00	0.00	0.00	0.00	0.00	0.00	0.00
600.00	0.00	0.00	600.00	0.00	0.00	0.00	0.00	0.00	0.00
700.00	0.00	0.00	700.00	0.00	0.00	0.00	0.00	0.00	0.00
800.00	0.00	0.00	800.00	0.00	0.00	0.00	0.00	0.00	0.00
900.00	0.00	0.00	900.00	0.00	0.00	0.00	0.00	0.00	0.00
1,000.00	0.00	0.00	1,000.00	0.00	0.00	0.00	0.00	0.00	0.00
1,100.00	0.00	0.00	1,100.00	0.00	0.00	0.00	0.00	0.00	0.00
1,200.00	0.00	0.00	1,200.00	0.00	0.00	0.00	0.00	0.00	0.00
1,300.00	0.00	0.00	1,300.00	0.00	0.00	0.00	0.00	0.00	0.00
1,400.00	0.00	0.00	1,400.00	0.00	0.00	0.00	0.00	0.00	0.00
1,500.00	0.00	0.00	1,500.00	0.00	0.00	0.00	0.00	0.00	0.00
1,600.00	0.00	0.00	1,600.00	0.00	0.00	0.00	0.00	0.00	0.00
1,700.00	0.00	0.00	1,700.00	0.00	0.00	0.00	0.00	0.00	0.00
1,800.00	0.00	0.00	1,800.00	0.00	0.00	0.00	0.00	0.00	0.00
1,900.00	0.00	0.00	1,900.00	0.00	0.00	0.00	0.00	0.00	0.00
2,000.00	0.00	0.00	2,000.00	0.00	0.00	0.00	0.00	0.00	0.00
2,100.00	0.00	0.00	2,100.00	0.00	0.00	0.00	0.00	0.00	0.00
2,200.00	0.00	0.00	2,200.00	0.00	0.00	0.00	0.00	0.00	0.00
2,300.00	0.00	0.00	2,300.00	0.00	0.00	0.00	0.00	0.00	0.00
2,400.00	0.00	0.00	2,400.00	0.00	0.00	0.00	0.00	0.00	0.00
2,500.00	0.00	0.00	2,500.00	0.00	0.00	0.00	0.00	0.00	0.00
2,600.00	0.00	0.00	2,600.00	0.00	0.00	0.00	0.00	0.00	0.00
2,700.00	0.00	0.00	2,700.00	0.00	0.00	0.00	0.00	0.00	0.00
2,800.00	0.00	0.00	2,800.00	0.00	0.00	0.00	0.00	0.00	0.00
2,900.00	0.00	0.00	2,900.00	0.00	0.00	0.00	0.00	0.00	0.00
3,000.00	0.00	0.00	3,000.00	0.00	0.00	0.00	0.00	0.00	0.00
3,100.00	0.00	0.00	3,100.00	0.00	0.00	0.00	0.00	0.00	0.00
3,200.00	0.00	0.00	3,200.00	0.00	0.00	0.00	0.00	0.00	0.00
3,300.00	0.00	0.00	3,300.00	0.00	0.00	0.00	0.00	0.00	0.00
3,400.00	0.00	0.00	3,400.00	0.00	0.00	0.00	0.00	0.00	0.00
3,500.00	0.00	0.00	3,500.00	0.00	0.00	0.00	0.00	0.00	0.00
3,600.00	0.00	0.00	3,600.00	0.00	0.00	0.00	0.00	0.00	0.00
3,700.00	0.00	0.00	3,700.00	0.00	0.00	0.00	0.00	0.00	0.00
3,800.00	0.00	0.00	3,800.00	0.00	0.00	0.00	0.00	0.00	0.00
3,900.00	0.00	0.00	3,900.00	0.00	0.00	0.00	0.00	0.00	0.00
4,000.00	0.00	0.00	4,000.00	0.00	0.00	0.00	0.00	0.00	0.00
4,100.00	0.00	0.00	4,100.00	0.00	0.00	0.00	0.00	0.00	0.00
4,200.00	0.00	0.00	4,200.00	0.00	0.00	0.00	0.00	0.00	0.00
4,300.00	0.00	0.00	4,300.00	0.00	0.00	0.00	0.00	0.00	0.00
4,400.00	0.00	0.00	4,400.00	0.00	0.00	0.00	0.00	0.00	0.00
4,500.00	0.00	0.00	4,500.00	0.00	0.00	0.00	0.00	0.00	0.00
4,600.00	0.00	0.00	4,600.00	0.00	0.00	0.00	0.00	0.00	0.00
4,700.00	0.00	0.00	4,700.00	0.00	0.00	0.00	0.00	0.00	0.00
4,800.00	0.00	0.00	4,800.00	0.00	0.00	0.00	0.00	0.00	0.00
4,900.00	0.00	0.00	4,900.00	0.00	0.00	0.00	0.00	0.00	0.00
KOP / Start Build 11.00°									
4,979.21	0.00	0.00	4,979.21	0.00	0.00	0.00	0.00	0.00	0.00
5,000.00	2.29	91.00	4,999.99	-0.01	0.41	0.41	11.00	11.00	0.00
5,050.00	7.79	91.00	5,049.78	-0.08	4.80	4.80	11.00	11.00	0.00

Database:	EDM 5000.1 Single User Db	Local Co-ordinate Reference:	Well Chimay 6 Federal Com LBB #5H
Company:	COG Operating, LLC	TVD Reference:	WELL @ 3700.00usft
Project:	Eddy County(NM27E)	MD Reference:	WELL @ 3700.00usft
Site:	Sec 6 T17S-R30E	North Reference:	Grid
Well:	Chimay 6 Federal Com LBB #5H	Survey Calculation Method:	Minimum Curvature
Wellbore:	Wellbore #1		
Design:	Design #1		

Planned Survey									
Measured Depth (usft)	Inclination (°)	Azimuth (°)	Vertical Depth (usft)	+N/-S (usft)	+E/-W (usft)	Vertical Section (usft)	Dogleg Rate (°/100usft)	Build Rate (°/100usft)	Turn Rate (°/100usft)
5,100.00	13.29	91.00	5,098.92	-0.24	13.94	13.94	11.00	11.00	0.00
5,150.00	18.79	91.00	5,146.96	-0.48	27.75	27.74	11.00	11.00	0.00
5,200.00	24.29	91.00	5,193.45	-0.80	46.09	46.09	11.00	11.00	0.00
5,250.00	29.79	91.00	5,237.97	-1.20	68.81	68.80	11.00	11.00	0.00
5,300.00	35.29	91.00	5,280.10	-1.67	95.69	95.68	11.00	11.00	0.00
5,350.00	40.79	91.00	5,319.47	-2.21	126.48	126.47	11.00	11.00	0.00
5,400.00	46.29	91.00	5,355.70	-2.81	160.90	160.89	11.00	11.00	0.00
5,450.00	51.79	91.00	5,388.47	-3.47	198.64	198.62	11.00	11.00	0.00
5,500.00	57.29	91.00	5,417.46	-4.18	239.34	239.32	11.00	11.00	0.00
5,550.00	62.79	91.00	5,442.43	-4.93	282.63	282.61	11.00	11.00	0.00
5,600.00	68.29	91.00	5,463.12	-5.73	328.12	328.09	11.00	11.00	0.00
PP @ 5613' MD									
5,613.00	69.72	91.00	5,467.78	-5.94	340.26	340.23	11.00	11.00	0.00
5,650.00	73.79	91.00	5,479.36	-6.55	375.38	375.35	11.00	11.00	0.00
5,700.00	79.29	91.00	5,491.00	-7.40	423.98	423.95	11.00	11.00	0.00
5,750.00	84.79	91.00	5,497.92	-8.26	473.47	473.43	11.00	11.00	0.00
5,800.00	90.29	91.00	5,500.07	-9.14	523.40	523.36	11.00	11.00	0.00
EOC / Start DLS 3.00° TFO -89.99									
5,806.48	91.00	91.00	5,500.00	-9.25	529.88	529.83	11.00	11.00	0.00
EOT / Start 4290.61' hold at 5853.56 MD									
5,853.56	91.00	89.59	5,499.18	-9.49	576.95	576.90	3.00	0.00	-3.00
5,900.00	91.00	89.59	5,498.37	-9.16	623.38	623.34	0.00	0.00	0.00
6,000.00	91.00	89.59	5,496.62	-8.44	723.36	723.32	0.00	0.00	0.00
6,100.00	91.00	89.59	5,494.88	-7.72	823.35	823.30	0.00	0.00	0.00
6,200.00	91.00	89.59	5,493.13	-7.00	923.33	923.29	0.00	0.00	0.00
6,300.00	91.00	89.59	5,491.39	-6.28	1,023.31	1,023.27	0.00	0.00	0.00
6,400.00	91.00	89.59	5,489.64	-5.56	1,123.29	1,123.26	0.00	0.00	0.00
6,500.00	91.00	89.59	5,487.90	-4.84	1,223.27	1,223.24	0.00	0.00	0.00
6,600.00	91.00	89.59	5,486.15	-4.12	1,323.26	1,323.23	0.00	0.00	0.00
6,700.00	91.00	89.59	5,484.41	-3.40	1,423.24	1,423.21	0.00	0.00	0.00
6,800.00	91.00	89.59	5,482.66	-2.68	1,523.22	1,523.19	0.00	0.00	0.00
6,900.00	91.00	89.59	5,480.92	-1.96	1,623.20	1,623.18	0.00	0.00	0.00
7,000.00	91.00	89.59	5,479.17	-1.24	1,723.19	1,723.16	0.00	0.00	0.00
7,100.00	91.00	89.59	5,477.42	-0.52	1,823.17	1,823.15	0.00	0.00	0.00
7,200.00	91.00	89.59	5,475.68	0.20	1,923.15	1,923.13	0.00	0.00	0.00
7,300.00	91.00	89.59	5,473.93	0.92	2,023.13	2,023.12	0.00	0.00	0.00
7,400.00	91.00	89.59	5,472.19	1.64	2,123.11	2,123.10	0.00	0.00	0.00
7,500.00	91.00	89.59	5,470.44	2.36	2,223.10	2,223.09	0.00	0.00	0.00
7,600.00	91.00	89.59	5,468.70	3.08	2,323.08	2,323.07	0.00	0.00	0.00
7,700.00	91.00	89.59	5,466.95	3.80	2,423.06	2,423.05	0.00	0.00	0.00
7,800.00	91.00	89.59	5,465.21	4.52	2,523.04	2,523.04	0.00	0.00	0.00
7,900.00	91.00	89.59	5,463.46	5.24	2,623.03	2,623.02	0.00	0.00	0.00
8,000.00	91.00	89.59	5,461.72	5.96	2,723.01	2,723.01	0.00	0.00	0.00
8,100.00	91.00	89.59	5,459.97	6.68	2,822.99	2,822.99	0.00	0.00	0.00
8,200.00	91.00	89.59	5,458.23	7.40	2,922.97	2,922.98	0.00	0.00	0.00
8,300.00	91.00	89.59	5,456.48	8.12	3,022.95	3,022.96	0.00	0.00	0.00
8,400.00	91.00	89.59	5,454.74	8.84	3,122.94	3,122.94	0.00	0.00	0.00
8,500.00	91.00	89.59	5,452.99	9.56	3,222.92	3,222.93	0.00	0.00	0.00
8,600.00	91.00	89.59	5,451.25	10.28	3,322.90	3,322.91	0.00	0.00	0.00
8,700.00	91.00	89.59	5,449.50	11.00	3,422.88	3,422.90	0.00	0.00	0.00
8,800.00	91.00	89.59	5,447.76	11.72	3,522.87	3,522.88	0.00	0.00	0.00
8,900.00	91.00	89.59	5,446.01	12.44	3,622.85	3,622.87	0.00	0.00	0.00
9,000.00	91.00	89.59	5,444.27	13.16	3,722.83	3,722.85	0.00	0.00	0.00

Database:	EDM 5000.1 Single User Db	Local Co-ordinate Reference:	Well Chimay 6 Federal Com LBB #5H
Company:	COG Operating, LLC	TVD Reference:	WELL @ 3700.00usft
Project:	Eddy County (NM27E)	MD Reference:	WELL @ 3700.00usft
Site:	Sec.6-T17S-R30E	North Reference:	Grid
Well:	Chimay 6 Federal Com LBB #5H	Survey Calculation Method:	Minimum Curvature
Wellbore:	Wellbore #1		
Design:	Design #1		

Planned Survey										
Measured Depth (usft)	Inclination (°)	Azimuth (°)	Vertical Depth (usft)	+N/-S (usft)	+E/-W (usft)	Vertical Section (usft)	Dogleg Rate (°/100usft)	Build Rate (°/100usft)	Turn Rate (°/100usft)	
9,100.00	91.00	89.59	5,442.52	13.88	3,822.81	3,822.84	0.00	0.00	0.00	
9,200.00	91.00	89.59	5,440.77	14.60	3,922.79	3,922.82	0.00	0.00	0.00	
9,300.00	91.00	89.59	5,439.03	15.32	4,022.78	4,022.80	0.00	0.00	0.00	
9,400.00	91.00	89.59	5,437.28	16.04	4,122.76	4,122.79	0.00	0.00	0.00	
9,500.00	91.00	89.59	5,435.54	16.76	4,222.74	4,222.77	0.00	0.00	0.00	
9,600.00	91.00	89.59	5,433.79	17.48	4,322.72	4,322.76	0.00	0.00	0.00	
9,700.00	91.00	89.59	5,432.05	18.20	4,422.70	4,422.74	0.00	0.00	0.00	
9,800.00	91.00	89.59	5,430.30	18.92	4,522.69	4,522.73	0.00	0.00	0.00	
9,900.00	91.00	89.59	5,428.56	19.64	4,622.67	4,622.71	0.00	0.00	0.00	
10,000.00	91.00	89.59	5,426.81	20.36	4,722.65	4,722.70	0.00	0.00	0.00	
10,100.00	91.00	89.59	5,425.07	21.08	4,822.63	4,822.68	0.00	0.00	0.00	
TD at 10144.17 - Chimay 6 Fed Com LBB 5H PBHL										
10,144.17	91.00	89.59	5,424.30	21.40	4,866.80	4,866.84	0.00	0.00	0.00	

Design Targets										
Target Name	Dip Angle (°)	Dip Dir. (°)	TVD (usft)	+N/-S (usft)	+E/-W (usft)	Northing (usft)	Easting (usft)	Latitude	Longitude	
hit/miss target										
Shape										
Chimay 6 Fed Com LBB	0.00	0.00	5,424.30	21.40	4,866.80	677,655.000	601,331.100	32° 51' 45.078 N	104° 0' 11.979 W	
- plan misses target center by 0.01usft at 10144.17usft MD (5424.30 TVD, 21.40 N, 4866.80 E)										
- Point										

Plan Annotations:					
Measured Depth (usft)	Vertical Depth (usft)	Local Coordinates			
		+N/-S (usft)	+E/-W (usft)	Comment	
4,979.21	4,979.21	0.00	0.00	KOP / Start Build 11.00°	
5,613.00	5,467.78	-5.94	340.26	PP @ 5613' MD	
5,806.48	5,500.00	-9.25	529.88	EOC / Start DLS 3.00° TFO -89.99	
5,853.56	5,499.18	-9.49	576.95	EOT / Start 4290.61' hold at 5853.56 MD	
10,144.17	5,424.30	21.40	4,866.80	TD at 10144.17	



Project: Eddy County(NM27E)  
 Site: Sec.6-T17S-R30E  
 Well: Chimay 6 Federal Com LBB #5H  
 Wellbore: Wellbore #1  
 Design: Design #1  
 Lat: 32° 51' 45.013 N  
 Long: 104° 1' 9.038 W  
 GL: 3686.00  
 KB: WELL @ 3700.00usft

# Archer

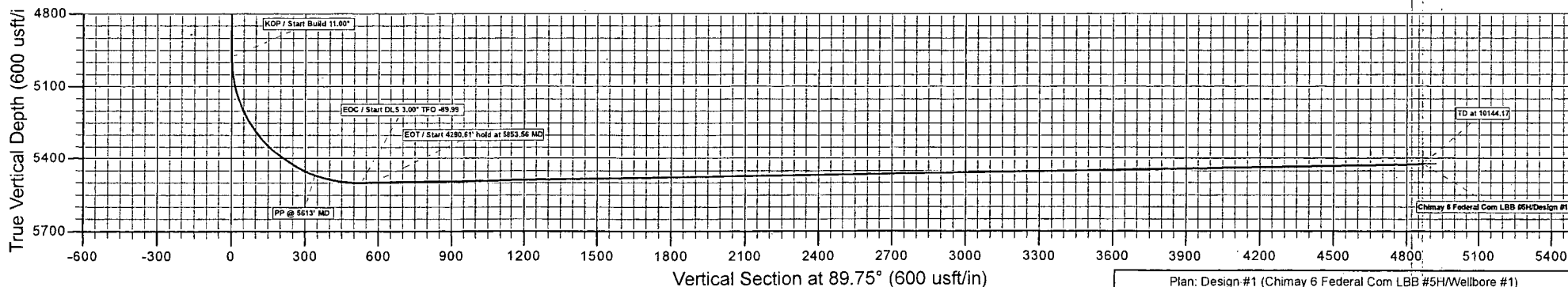
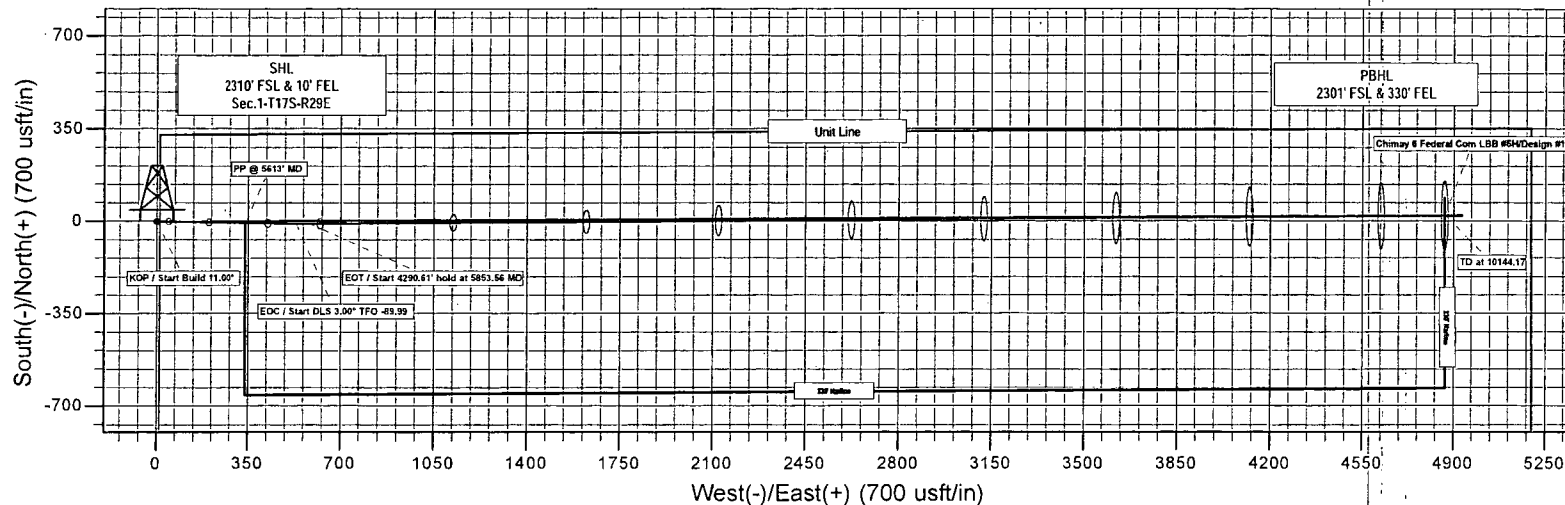
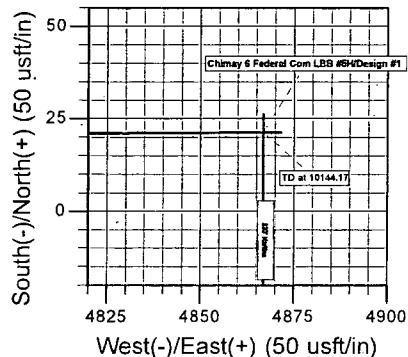
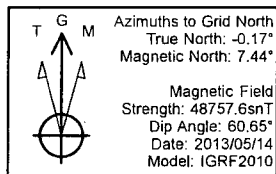
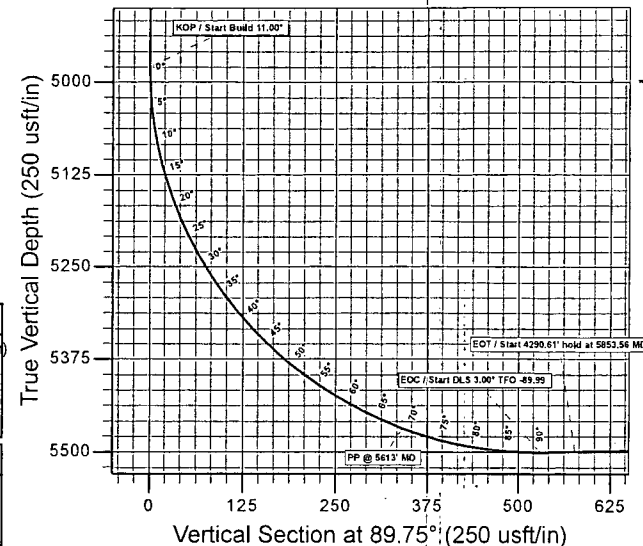
SECTION DETAILS									
MD	Inc	Azi	TVD	+N/-S	+E/-W	Deg	TFace	VSec	Annotation
0.00	0.00	0.00	0.00	0.00	0.00	0.00	0.00	0.00	
4979.21	0.00	0.00	4979.21	0.00	0.00	0.00	0.00	0.00	KOP / Start Build 11.00°
5806.48	91.00	91.00	5500.00	-9.25	529.88	11.00	91.00	529.83	EOC / Start DLS 3.00° TFO -89.99
5853.56	91.00	89.59	5499.18	-9.49	576.95	3.00	-89.99	576.90	EOT / Start 4290.61' hold at 5853.56 MD
10144.17	91.00	89.59	5424.30	21.40	4866.80	0.00	0.00	4866.85	TD at 10144.17

WELL DETAILS: Chimay 6 Federal Com LBB #5H									
+N/-S	+E/-W	Northing	Ground Level:	3686.00	Latitude	Longitude	Slot		
0.00	0.00	677633.600	Easting	596464.300	32° 51' 45.013 N	104° 1' 9.038 W			

WELLBORE TARGET DETAILS (LAT/LONG)							
Name	TVD	+N/-S	+E/-W	Latitude	Longitude	Shape	Point
Chimay 6 Fed Com LBB 5H PBHL	5424.30	21.40	4866.80	32° 51' 45.078 N	104° 0' 11.979 W		

PROJECT DETAILS: Eddy County(NM27E)  
 Geodetic System: US State Plane 1927 (Exact solution)  
 Datum: NAD 1927 (NADCON CONUS)  
 Ellipsoid: Clarke 1866  
 Zone: New Mexico East 3001  
 System Datum: Mean Sea Level

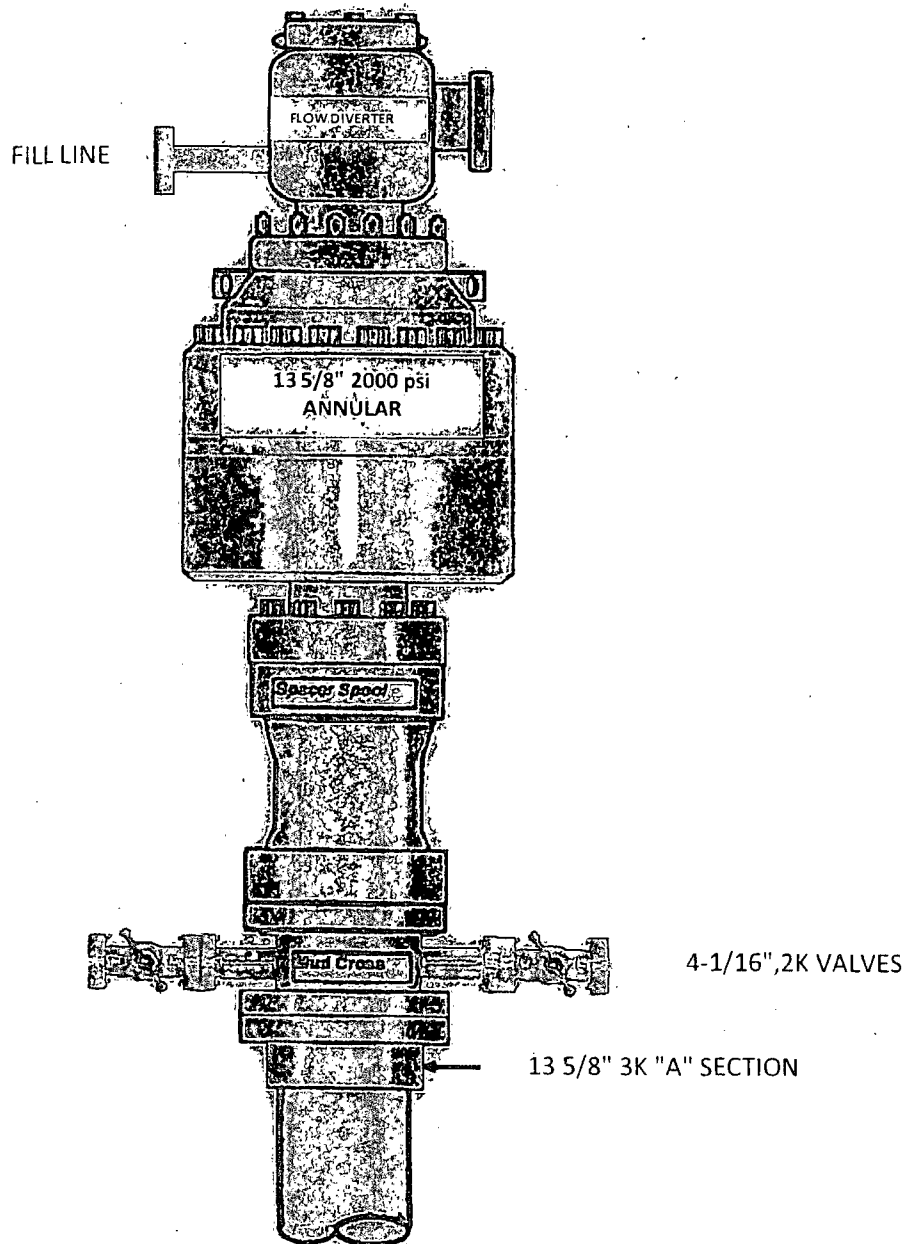
SITE DETAILS: Sec.6-T17S-R30E  
 Site Centre Latitude: 32° 51' 51.534 N  
 Longitude: 104° 1' 5.028 W  
 Positional Uncertainty: 0.00  
 Convergence: 0.17  
 Local North: Grid



Plan: Design #1 (Chimay 6 Federal Com LBB #5H/Wellbore #1)

Created By: Bret Wolford Date: 9:46, May 14 2013

## 13 5/8" 2K ANNULAR

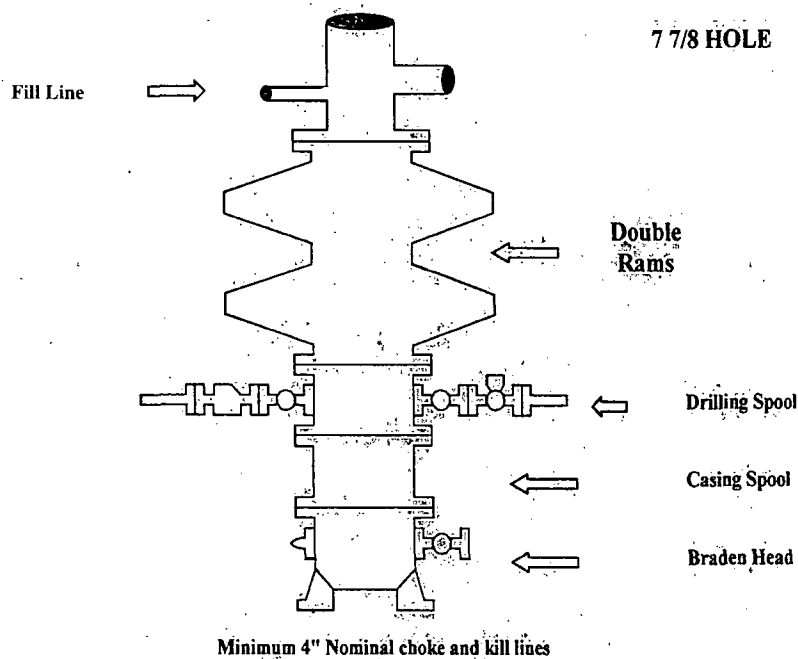




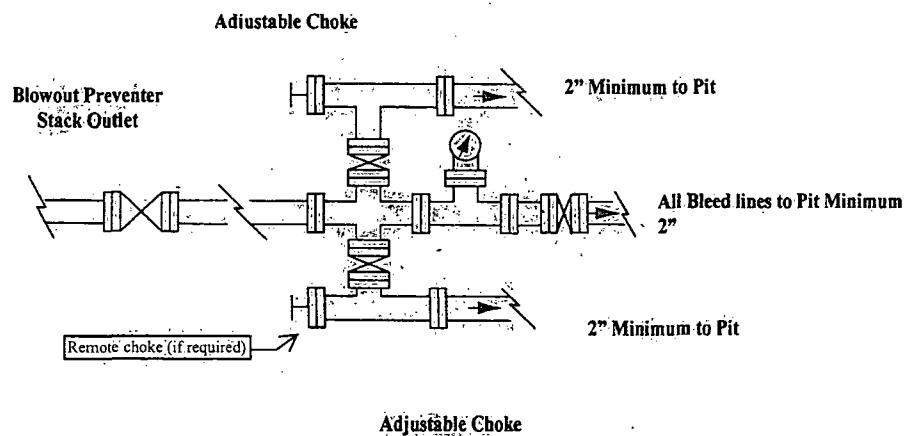
# COG Operating LLC

## Exhibit #9

### BOPE and Choke Schematic



Choke Manifold Requirement (2000 psi WP)  
No Annular Required



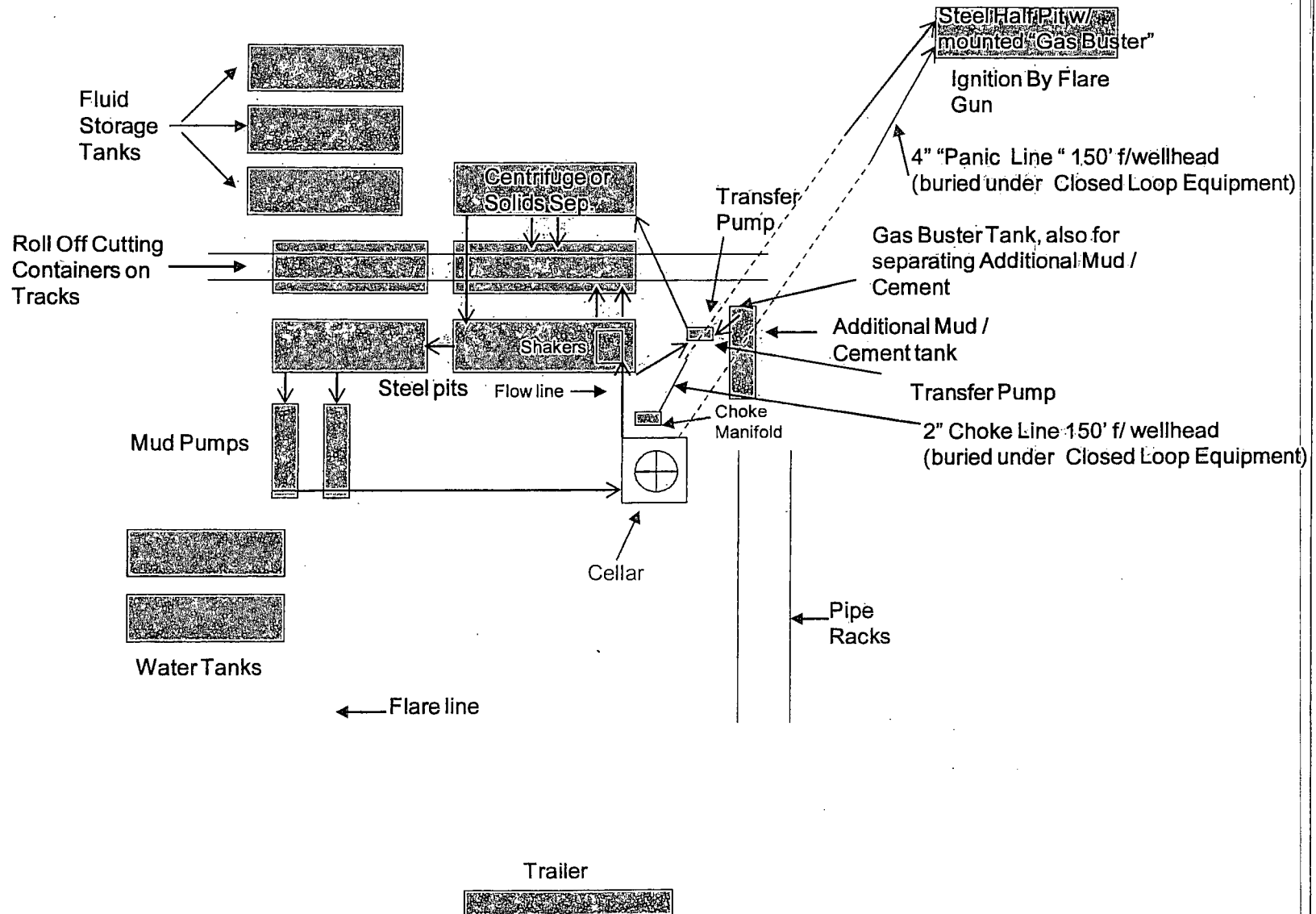
**NOTES REGARDING THE BLOWOUT PREVENTERS**

**Master Drilling Plan  
Eddy County, New Mexico**

1. Drilling nipple to be so constructed that it can be removed without use of a welder through rotary table opening, with minimum I.D. equal to preventer bore.
2. Wear ring to be properly installed in head.
3. Blow out preventer and all fittings must be in good condition, 2000 psi WP minimum.
4. All fittings to be flanged.
5. Safety valve must be available on rig floor at all times with proper connections, valve to be full 2000 psi WP minimum.
6. All choke and fill lines to be securely anchored especially ends of choke lines.
7. Equipment through which bit must pass shall be at least as large as the diameter of the casing being drilled through.
8. Kelly cock on Kelly.
9. Extension wrenches and hands wheels to be properly installed.
10. Blow out preventer control to be located as close to driller's position as feasible.
11. Blow out preventer closing equipment to include minimum 40-gallon accumulator, two independent sources of pump power on each closing unit installation all API specifications.

# COG Operating LLC

## Closed Loop Equipment Diagram



## Closed Loop Operation & Maintenance Procedure

All drilling fluid circulated over shaker(s) with cuttings discharged into roll off container.

~~Fluid and fines below shaker(s) are circulated with transfer pump through centrifuge(s) or solids separator with cuttings and fines discharged into roll off container.~~

Fluid is continuously re-circulated through equipment with polymer added to aid separation of cutting fines.

Roll off containers are lined and de-watered with fluids re-circulated into system.

Additional tank is used to capture unused drilling fluid or cement returns from casing jobs.

This equipment will be maintained 24 hrs./day by solids control personnel and or rig crews that stay on location.

Cuttings will be hauled to either:

CRI (permit number R9166)

or

GMI (permit number 711-019-001)

dependent upon which rig is available to drill this well.

## Hydrogen Sulfide Drilling Operation Plan

### I. HYDROGEN SULFIDE TRAINING

All personnel, whether regularly assigned, contracted, or employed on an unscheduled basis, will receive training from a qualified instructor in the following areas prior to commencing drilling operations on this well:

1. The hazards and characteristics of hydrogen sulfide (H<sub>2</sub>S)
2. The proper use and maintenance of personal protective equipment and life support systems.
3. The proper use of H<sub>2</sub>S detectors, alarms, warning systems, briefing areas, evacuation procedures, and prevailing winds.
4. The proper techniques for first aid and rescue procedures.

In addition, supervisory personnel will be trained in the following areas:

1. The effects of H<sub>2</sub>S on metal components. If high tensile tubular are to be used, personnel will be trained in their special maintenance requirements.
2. Corrective action and shut-in procedures when drilling or reworking a well and blowout prevention and well control procedures.
3. The contents and requirements of the H<sub>2</sub>S Drilling Operations Plan and Public Protection Plan.

There will be an initial training session just prior to encountering a known or probable H<sub>2</sub>S zone (within 3 days or 500 feet) and weekly H<sub>2</sub>S and well control drills for all personnel in each crew. The initial training session shall include a review of the site specific H<sub>2</sub>S Drilling Operations Plan and the Public Protection Plan. **The concentrations of H<sub>2</sub>S of wells in this area from surface to TD are low enough that a contingency plan is not required.**

---

## **II. H2S SAFETY EQUIPMENT AND SYSTEMS**

---

Note: All H2S safety equipment and systems will be installed, tested, and operational when drilling reaches a depth of 500 feet above, or three days prior to penetrating the first zone containing or reasonable expected to contain H2S.

---

### **1. Well Control Equipment:**

- A. Flare line.
- B. Choke manifold with minimum of one remotely operated choke.
- C. Closed Loop Blow Down Tank
- D. Blind rams and pipe rams to accommodate all pipe sizes with properly sized closing unit.
- E. Auxiliary equipment may include if applicable: annular preventer & rotating head.

### **2. Protective equipment for essential personnel:**

- A. SCBA (Self contained breathing apparatus) 30-minute units located in the doghouse and at briefing areas, as indicated on well site diagram.

### **3. H2S detection and monitoring equipment:**

- A. Portable H2S monitors positioned on location for best coverage and response. These units have warning lights and audible sirens when H2S levels of 20 PPM are reached.

### **4. Visual warning systems:**

- A. Wind direction indicators as shown on well site diagram.
- B. Caution/Danger signs (Exhibit #7) shall be posted on roads providing direct access to location. Signs will be painted a high visibility yellow with black lettering of sufficient size to be readable at a reasonable distance from the immediate location. Bilingual signs will be used, when appropriate. See example attached.

### **5. Mud program:**

- A. The mud program has been designed to minimize the volume of H2S circulated to surface. Proper mud weight, safe drilling practices, and the use of H2S scavengers will minimize hazards when penetrating H2S bearing zones.
-

**6. Metallurgy:**

A. All drill strings, casings, tubing, wellhead, blowout preventer, drilling spool, kill lines, choke manifold and lines, and valves shall be suitable for H2S service.

B. All elastomers used for packing and seals shall be H2S trim.

**7. Communication:**

A. Radio communications in company vehicles including cellular telephone and 2-way radio.

B. Land line (telephone) communication at Office.

**8. Well testing:**

A. Drill stem testing will be performed with a minimum number of personnel in the immediate vicinity, which are necessary to safely and adequately conduct the test. The drill stem testing will be conducted during daylight hours and formation fluids will not be flowed to the surface. All drill-stem-testing operations conducted in an H2S environment will use the closed chamber method of testing.

B. There will be no drill stem testing.

**EXHIBIT #7**

**WARNING  
YOU ARE ENTERING AN H<sub>2</sub>S  
AUTHORIZED PERSONNEL ONLY**

1. BEARDS OR CONTACT LENSES NOT ALLOWED
2. HARD HATS REQUIRED
3. SMOKING IN DESIGNATED AREAS ONLY
4. BE WIND CONSCIOUS AT ALL TIMES
5. CHECK WITH COG OPERATING FOREMAN AT

**COG OPERATING LLC  
1-432-683-7443  
1-575-746-2010**

**EDDY COUNTY EMERGENCY NUMBERS**

ARTESIA FIRE DEPT. 575-746-5050  
ARTESIA POLICE DEPT. 575-746-5000  
EDDY CO. SHERIFF DEPT. 575-746-9888

**LEA COUNTY EMERGENCY NUMBERS**

HOBBS FIRE DEPT. 575-397-9308  
HOBBS POLICE DEPT. 575-397-9285  
LEA CO. SHERIFF DEPT. 575-396-1196

COG Operating LLC

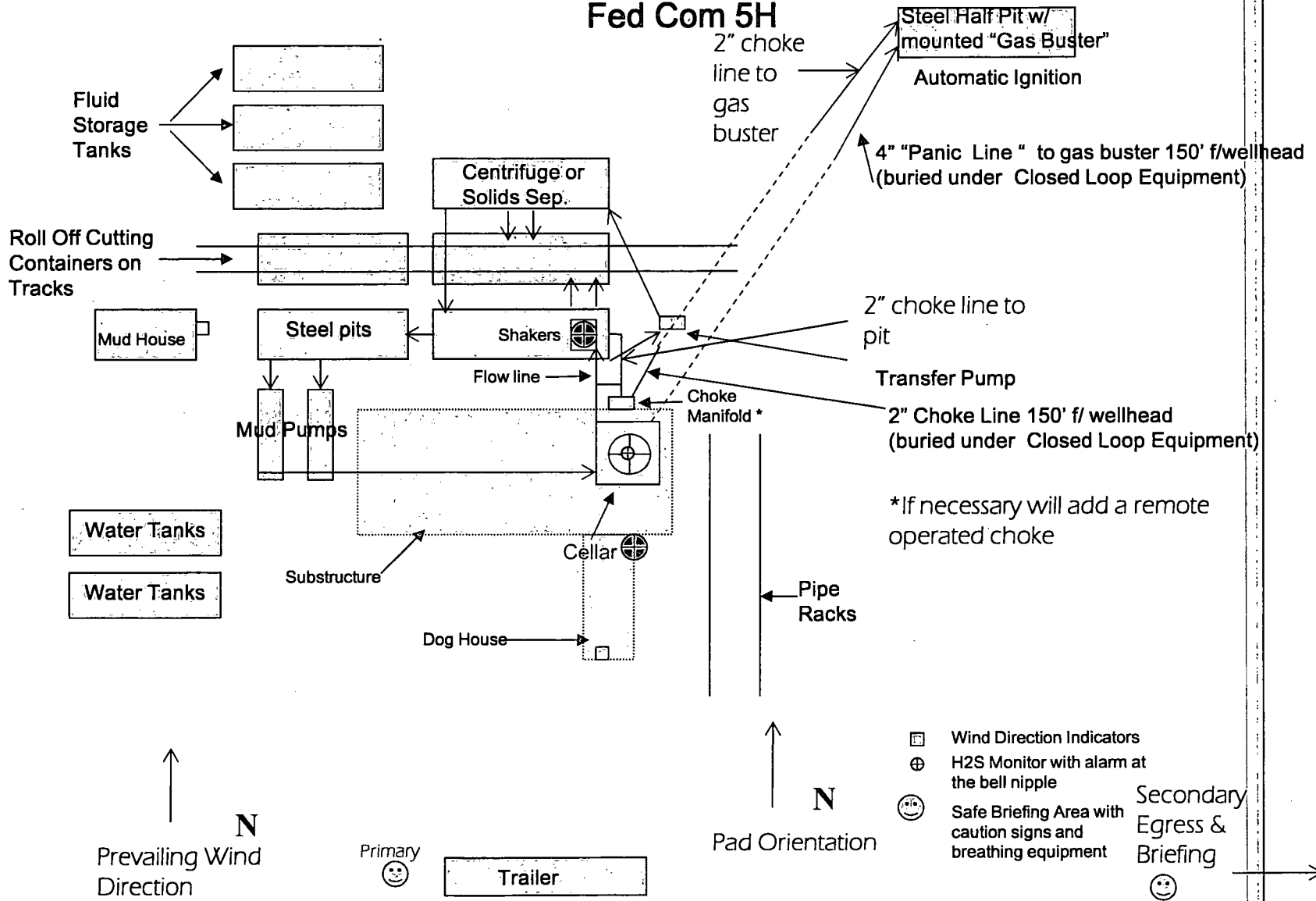
Drilling Location - H2S Safety Equipment Diagram

EXHIBIT 8-

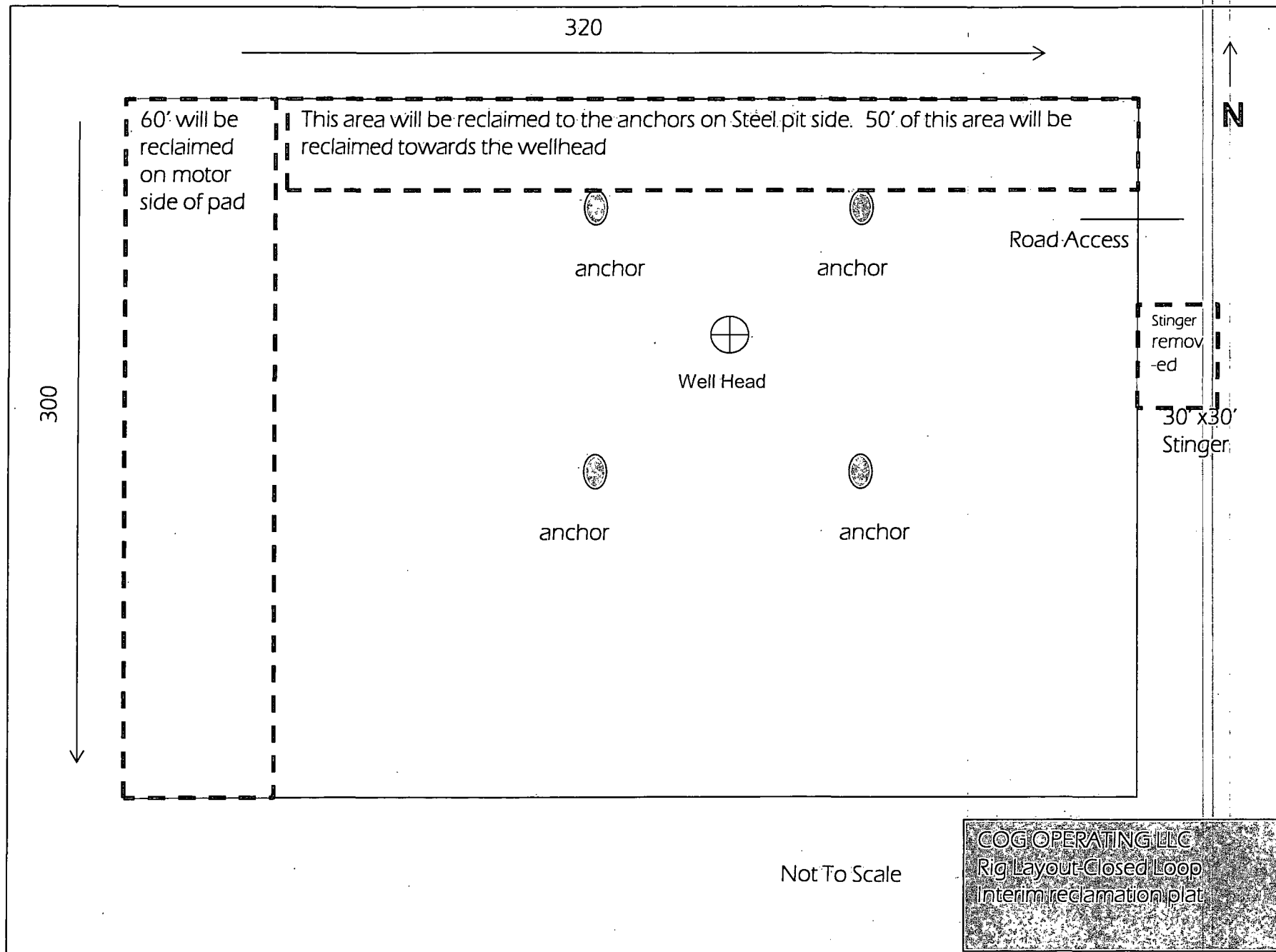
Chimay 6

Fed Com 5H

Road Access  
with H2S  
sign







Surface Use Plan  
COG Operating, LLC  
Chimay 6 Fed Com LBB #5H  
SL: 2310' FSL & 10' FEL      UL I  
Section 1, T-17-S, R-29-E  
BHL: 2301' FSL & 330' FEL      UL L  
Section 6, T-17-S, R-30-E  
Eddy County, New Mexico

---

# Surface Use & Operating Plan

## Chimay 6 Fed Com LBB #5H

- Surface Tenant: Bogle Farms, Lewis Derrick, P O Box 441, Artesia, NM 88211.
- New Road: approx. 18.6'
- Flow Line: approx. 570 feet
- Facilities: Chimay 6 Fed Com 6H

### Well Site Information

V Door: East

Topsoil: West

Interim Reclamation: West/North

### Notes

-Staked to share pad with the Passion 1 Fed Com LBB 5H

Onsite: 2/21/2013

Tanner Nygren(BLM), Caden Jameson (COG), Gary Box (P.C.)

---

## **SURFACE USE AND OPERATING PLAN**

### **1. Existing & Proposed Access Roads**

- A. The well site survey and elevation plat for the proposed well is attached with this application. It was staked by Prosperity Consultants, LLC, Midland, TX.
- B. All roads to the location are shown in the Vicinity Map. The existing lease roads are illustrated and are adequate for travel during drilling and production operations. Upgrading existing roads prior to drilling the well will be done where necessary. The road route to the well site is depicted in Vicinity Map. The road highlighted in the Vicinity Map will be used to access the well.
- C. Directions to location: See Vicinity Map.
- D. Routine grading and maintenance of existing roads will be conducted as necessary to maintain their condition as long as any operations continue on this lease. Roads will be maintained according to specifications in section 2A of this Surface Use and Operating Plan.

### **2. Proposed Access Road:**

The Elevation Plat shows that 18.6' of new access road will be required for this location. If any road is required it will be constructed as follows:

- A. The maximum width of the running surface will be 14'. The road will be crowned, ditched and constructed of 6" rolled and compacted caliche. Ditches will be at 3:1 slope and 4 feet wide. Water will be diverted where necessary to avoid ponding, prevent erosion, maintain good drainage, and to be consistent with local drainage patterns.
- B. The average grade will be less than 1%.
- C. No turnouts are planned.
- D. No culverts, cattleguard, gates, low water crossings or fence cuts are necessary.
- E. Surfacing material will consist of native caliche. Caliche will be obtained from the actual well site if available. If not available onsite, caliche will be hauled from the nearest BLM approved caliche pit.

---

**3. Location of Existing Well:**

The 1-mile Map shows all existing wells within a one-mile radius of this well.

As shown on this plat there are numerous wells producing from the San Andres and Yeso formations.

**4. Location of Existing and/or Proposed Facilities:**

- A. COG Operating LLC does operate a production facility on this lease.
- B. If the well is productive, contemplated facilities will be as follows:
  - 1) Production will be sent to the Chimay 6 Fed Com 6H LBB 6H Federal Tank Battery located in Section 6 at approx. 2000' FSL & 330' FWL in T17S R30E. The facility location is shown in Exhibit #1.
  - 2) The tank battery and facilities including all flow lines and piping will be installed according to API specifications.
  - 3) Any additional caliche will be obtained from the actual well site. If caliche does not exist or is not plentiful from the well site, the caliche will be hauled from a BLM approved caliche pit. Any additional construction materials will be purchased from contractors.
  - 4) Proposed flow lines, will follow an archaeologically approved route to the Chimay 6 Fed Com LBB 6H Federal Tank Battery located in Section 6 at approx. 2000' FSL & 330' FWL in T17S R30E. The flowline will be SDR 7 3" poly line laid on the surface and will be approximately 570 feet in length. See Exhibit 1.
  - 5) It will be necessary to run electric power if this well is productive. Power will be provided by CVE and they will submit a separate plan and ROW for service to the well location.
  - 6) If the well is productive, rehabilitation plans will include the following:
    - The original topsoil from the well site will be returned to the location, and the site will be re-contoured as close as possible to the original site.

---

**5. Location and Type of Water Supply:**

The well will be drilled with combination brine and fresh water mud system as outlined in the drilling program. The water will be obtained from commercial water stations in the area and hauled to location by transport truck over the existing and proposed access roads shown in Vicinity Map. If a commercial fresh water source is nearby, fast line may be laid along existing road ROW's and fresh water pumped to the well. No water well will be drilled on the location.

**6. Source of Construction Materials and Location "Turn-Over" Procedure:**

Obtaining caliche: The primary way of obtaining caliche to build locations and roads will be by "turning over" the location. This means, caliche will be obtained from the actual well sight. A caliche permit will be obtained from BLM prior to pushing up any caliche. 2400 cu. Yards is max amount of caliche needed for pad and roads. Amount will vary for each pad. The procedure below has been approved by BLM personnel:

- A. The top 6 inches of topsoil is pushed off and stockpiled along the side of the location.**
- B. An approximate 120' X 120' area is used within the proposed well site to remove caliche.**
- C. Subsoil is removed and piled alongside the 120' by 120' area within the pad site.**
- D. When caliche is found, material will be stock piled within the pad site to build the location and road.**
- E. Then subsoil is pushed back in the hole and caliche is spread accordingly across entire location and road.**
- F. Once well is drilled, the stock piled top soil will be used for interim reclamation and spread along areas where caliche is picked up and the location size is reduced. Neither caliche nor subsoil will be stock piled outside of the well pad. Topsoil will be stockpiled along the edge of the pad as depicted in attached plat.**
  - In the event that no caliche is found onsite, caliche will be hauled in from a BLM approved caliche pit.

---

**7. Methods of Handling Water Disposal:**

- A. The well will be drilled utilizing a closed loop mud system. Drill cuttings will be held in roll-off style mud boxes and taken to an NMOCD approved disposal site.
- B. Drilling fluids will be contained in steel mud pits.
- C. Water produced from the well during completion will be held temporarily in steel tanks and then taken to an NMOCD approved commercial disposal facility.
- D. Garbage and trash produced during drilling or completion operations will be collected in a trash bin and hauled to an approved landfill. No toxic waste or hazardous chemicals will be produced by this operation.
- E. Human waste and grey water will need to be properly contained and disposed of. Proper disposal and elimination of waste and grey water may include but are not limited to portable septic systems and/or portable waste gathering systems (i.e. portable toilets).
- F. After the rig is moved out and the well is either completed or abandoned, all waste materials will be cleaned up within 30 days. In the event of a dry hole only a dry hole marker will remain.

**8. Ancillary Facilities:**

No airstrip, campsite or other facilities will be built as a result of the operation on this well.

**9. Well Site Layout:**

- A. The drill pad layout, with elevations staked by Prosperity Consultants, LLC, is shown in the Elevation Plat. Dimensions of the pad and pits are shown on the Rig Layout. V door direction is East. Topsoil, if available, will be stockpiled per BLM specifications. Because the pad is almost level no major cuts will be required.
- B. The Rig Layout Closed-Loop exhibit shows the proposed orientation of closed loop system and access road. No permanent living facilities are planned, but a temporary foreman/toolpusher's trailer will be on location during the drilling operations.

#### **10. Plans for Restoration of the Surface:**

- A. Interim Reclamation will take place after the well has been completed. The pad will be downsized by reclaiming the areas not needed for production operations. The portions of the pad that are not needed for production operations will be re-contoured to its original state as much as possible. The caliche that is removed will be reused to either build another pad site or for road repairs within the lease. The stockpiled topsoil will then be spread out reclaimed area and reseeded with a BLM approved seed mixture. In the event that the well must be worked over or maintained, it may be necessary to drive, park, and/or operate machinery on reclaimed land. This area will be repaired or reclaimed after work is complete.
- B. Final Reclamation: Upon plugging and abandoning the well all caliche for well pad and lease road will be removed and surface will be recountoured to reflect its surroundings as much as possible. Caliche will be recycled for road repair or reused for another well pad within the lease. If any topsoil remains, it will be spread out and the area will be reseeded with a BLM approved mixture and re-vegetated as per BLM orders.

#### **11. Surface Ownership:**

- A. The surface is owned by the U.S. Government and is administered by the Bureau of Land Management. The surface is multiple uses with the primary uses of the region for grazing of livestock and the production of oil and gas.
- B. The surface tenant is Bogle Farms, Lewis Derrick, P.O. Box 441, Artesia, NM 88211.
- C. The proposed road routes and surface location will be restored as directed by the BLM

## 12. Other Information:

- A. The area around the well site is grassland and the topsoil is sandy. The vegetation is moderately sparse with native prairie grasses, some mesquite and shinnery oak. No wildlife was observed but it is likely that mule deer, rabbits, coyotes and rodents traverse the area.
- B. There is no permanent or live water in the immediate area.
- C. There are no dwellings within 2 miles of this location.
- D. If needed, a Cultural Resources Examination is being prepared by Boone Arch Services of New Mexico, LLC. Carlsbad, NM, 88220. 506 E Chapman Rd. , phone # 575.887.7667 and the results will be forwarded to your office in the near future. Otherwise, **COG will be participating in the Permian Basin MOA Program.**

## 13. Bond Coverage:

Bond Coverage is Nationwide Bond # 000215

## 14. Lessee's and Operator's Representative:

The COG Operating LLC representative responsible for assuring compliance with the surface use plan is as follows:

Jim Evans	Ray Peterson
Drilling Superintendent	Drilling Manager
COG Operating LLC	COG Operating LLC
One Concho Center	One Concho Center
600 W. Illinois	600 W. Illinois
Midland, TX 79701	Midland, TX 79701
Phone (432) 685-4304 (office)	Phone (432) 685-4304 (office)
(432) 221-0346 (business)	(432) 818-2254 (business)



# PECOS DISTRICT CONDITIONS OF APPROVAL

<b>OPERATOR'S NAME:</b>	<b>COG Operating, LLC</b>
<b>LEASE NO.:</b>	<b>NMMN-117555</b>
<b>WELL NAME &amp; NO.:</b>	<b>Chimay 6 Federal Com LBB 6H</b>
<b>SURFACE HOLE FOOTAGE:</b>	<b>1963' FSL &amp; 0327' FWL</b>
<b>BOTTOM HOLE FOOTAGE</b>	<b>1646' FSL &amp; 0330' FEL</b>
<b>LOCATION:</b>	<b>Section 06, T. 17 S., R 30 E., NMPM</b>
<b>COUNTY:</b>	<b>Eddy County, New Mexico</b>

## TABLE OF CONTENTS

Standard Conditions of Approval (COA) apply to this APD. If any deviations to these standards exist or special COAs are required, the section with the deviation or requirement will be checked below.

- ☐ **General Provisions**
- ☐ **Permit Expiration**
- ☐ **Archaeology, Paleontology, and Historical Sites**
- ☐ **Noxious Weeds**
- ☒ **Special Requirements**
  - Lesser Prairie-Chicken Timing Stipulations
  - Ground-level Abandoned Well Marker
  - Communitization Agreement
- ☒ **Construction**
  - Notification
  - Topsoil
  - Closed Loop System
  - Federal Mineral Material Pits
  - Well Pads
  - Roads
- ☐ **Road Section Diagram**
- ☒ **Drilling**
  - Cement Requirements
  - H2S Requirements
  - Logging Requirements
  - Waste Material and Fluids
- ☒ **Production (Post Drilling)**
  - Well Structures & Facilities
  - Pipelines
- ☐ **Interim Reclamation**
- ☒ **Final Abandonment & Reclamation**

## **I. GENERAL PROVISIONS**

The approval of the Application For Permit To Drill (APD) is in compliance with all applicable laws and regulations: 43 Code of Federal Regulations 3160, the lease terms, Onshore Oil and Gas Orders, Notices To Lessees, New Mexico Oil Conservation Division (NMOCD) Rules, National Historical Preservation Act As Amended, and instructions and orders of the Authorized Officer. Any request for a variance shall be submitted to the Authorized Officer on Form 3160-5, Sundry Notices and Report on Wells.

## **II. PERMIT EXPIRATION**

If the permit terminates prior to drilling and drilling cannot be commenced within 60 days after expiration, an operator is required to submit Form 3160-5, Sundry Notices and Reports on Wells, requesting surface reclamation requirements for any surface disturbance. However, if the operator will be able to initiate drilling within 60 days after the expiration of the permit, the operator must have set the conductor pipe in order to allow for an extension of 60 days beyond the expiration date of the APD. (Filing of a Sundry Notice is required for this 60 day extension.)

## **III. ARCHAEOLOGICAL, PALEONTOLOGY & HISTORICAL SITES**

Any cultural and/or paleontological resource discovered by the operator or by any person working on the operator's behalf shall immediately report such findings to the Authorized Officer. The operator is fully accountable for the actions of their contractors and subcontractors. The operator shall suspend all operations in the immediate area of such discovery until written authorization to proceed is issued by the Authorized Officer. An evaluation of the discovery shall be made by the Authorized Officer to determine the appropriate actions that shall be required to prevent the loss of significant cultural or scientific values of the discovery. The operator shall be held responsible for the cost of the proper mitigation measures that the Authorized Officer assesses after consultation with the operator on the evaluation and decisions of the discovery. Any unauthorized collection or disturbance of cultural or paleontological resources may result in a shutdown order by the Authorized Officer.

## **IV. NOXIOUS WEEDS**

The operator shall be held responsible if noxious weeds become established within the areas of operations. Weed control shall be required on the disturbed land where noxious weeds exist, which includes the roads, pads, associated pipeline corridor, and adjacent land affected by the establishment of weeds due to this action. The operator shall consult with the Authorized Officer for acceptable weed control methods, which include following EPA and BLM requirements and policies.

## V. SPECIAL REQUIREMENT(S)

### **Timing Limitation Stipulation / Condition of Approval for lesser prairie-chicken:**

Oil and gas activities including 3-D geophysical exploration, and drilling will not be allowed in lesser prairie-chicken habitat during the period from March 1st through June 15th annually. During that period, other activities that produce noise or involve human activity, such as the maintenance of oil and gas facilities, pipeline, road, and well pad construction, will be allowed except between 3:00 am and 9:00 am. The 3:00 am to 9:00 am restriction will not apply to normal, around-the-clock operations, such as venting, flaring, or pumping, which do not require a human presence during this period. Additionally, no new drilling will be allowed within up to 200 meters of leks known at the time of permitting. Normal vehicle use on existing roads will not be restricted. Exhaust noise from pump jack engines must be muffled or otherwise controlled so as not to exceed 75 db measured at 30 feet from the source of the noise.

**Ground-level Abandoned Well Marker to avoid raptor perching:** Upon the plugging and subsequent abandonment of the well, the well marker will be installed at ground level on a plate containing the pertinent information for the plugged well. For more installation details, contact the Carlsbad Field Office at 575-234-5972.

### **Communitization Agreement**

A Communitization Agreement covering the acreage dedicated to this well must be filed for approval with the BLM. The effective date of the agreement shall be prior to any sales. In addition, the well sign shall include the surface and bottom hole lease numbers. If the Communitization Agreement number is known, it shall also be on the sign. If not, it shall be placed on the sign when the sign is replaced.

examples of enclosure fencing design, refer to BLM's Oil and Gas Gold Book, Enclosure Fence Illustrations, Figure 1, Page 18.)

## **G. ON LEASE ACCESS ROADS**

### **Road Width**

The access road shall have a driving surface that creates the smallest possible surface disturbance and does not exceed fourteen (14) feet in width. The maximum width of surface disturbance, when constructing the access road, shall not exceed twenty-five (25) feet.

### **Surfacing**

Surfacing material is not required on the new access road driving surface. If the operator elects to surface the new access road or pad, the surfacing material may be required to be removed at the time of reclamation.

Where possible, no improvements should be made on the unsurfaced access road other than to remove vegetation as necessary, road irregularities, safety issues, or to fill low areas that may sustain standing water.

The Authorized Officer reserves the right to require surfacing of any portion of the access road at any time deemed necessary. Surfacing may be required in the event the road deteriorates, erodes, road traffic increases, or it is determined to be beneficial for future field development. The surfacing depth and type of material will be determined at the time of notification.

### **Crowning**

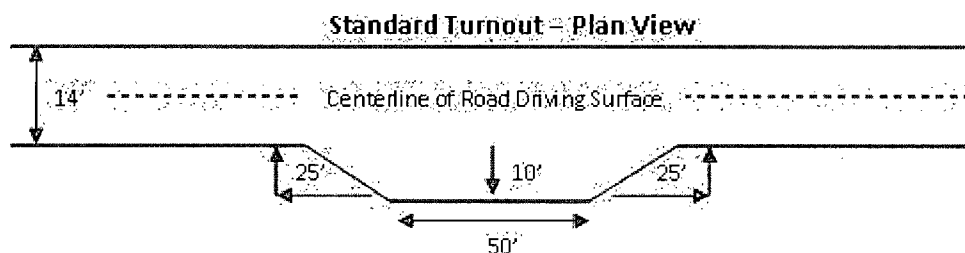
Crowning shall be done on the access road driving surface. The road crown shall have a grade of approximately 2% (i.e., a 1" crown on a 14' wide road). The road shall conform to Figure 1; cross section and plans for typical road construction.

### **Ditching**

Ditching shall be required on both sides of the road.

### **Turnouts**

Vehicle turnouts shall be constructed on the road. Turnouts shall be intervisible with interval spacing distance less than 1000 feet. Turnouts shall be constructed on all blind curves. Turnouts shall conform to the following diagram:



- d. The results of the test shall be reported to the appropriate BLM office.
- e. All tests are required to be recorded on a calibrated test chart. **A copy of the BOP/BOPE test chart and a copy of independent service company test will be submitted to the appropriate BLM office.**
- f. The BOP/BOPE test shall include a low pressure test from 250 to 300 psi. The test will be held for a minimum of 10 minutes if test is done with a test plug and 30 minutes without a test plug. This test shall be performed prior to the test at full stack pressure.

#### **D. DRILL STEM TEST**

If drill stem tests are performed, Onshore Order 2.III.D shall be followed.

#### **E. WASTE MATERIAL AND FLUIDS**

All waste (i.e. drilling fluids, trash, salts, chemicals, sewage, gray water, etc.) created as a result of drilling operations and completion operations shall be safely contained and disposed of properly at a waste disposal facility. No waste material or fluid shall be disposed of on the well location or surrounding area.

Porto-johns and trash containers will be on-location during fracturing operations or any other crew-intensive operations.

**JAM 072313**

largest tank, plus freeboard to account for precipitation, unless more stringent protective requirements are deemed necessary.

### **Painting Requirement**

All above-ground structures including meter housing that are not subject to safety requirements shall be painted a flat non-reflective paint color, **Shale Green** from the BLM Standard Environmental Color Chart (CC-001: June 2008).

## **B. PIPELINES**

### **STANDARD STIPULATIONS FOR SURFACE INSTALLED PIPELINES**

**A copy of the application (Grant, Sundry Notice, APD) and attachments, including stipulations, survey plat and/or map, will be on location during construction. BLM personnel may request to you a copy of your permit during construction to ensure compliance with all stipulations.**

Holder agrees to comply with the following stipulations to the satisfaction of the Authorized Officer:

1. The holder shall indemnify the United States against any liability for damage to life or property arising from the occupancy or use of public lands under this grant.
2. The holder shall comply with all applicable Federal laws and regulations existing or hereafter enacted or promulgated. In any event, the holder shall comply with the Toxic Substances Control Act of 1976 as amended, 15 USC 2601 et seq. (1982) with regards to any toxic substances that are used, generated by or stored on the right-of-way or on facilities authorized under this right-of-way grant. (See 40 CFR, Part 702-799 and especially, provisions on polychlorinated biphenyls, 40 CFR 761.1-761.193.) Additionally, any release of toxic substances (leaks, spills, etc.) in excess of the reportable quantity established by 40 CFR, Part 117 shall be reported as required by the Comprehensive Environmental Response, Compensation, and Liability Act, section 102b. A copy of any report required or requested by any Federal agency or State government as a result of a reportable release or spill of any toxic substances shall be furnished to the authorized officer concurrent with the filing of the reports to the involved Federal agency or State government.
3. The holder agrees to indemnify the United States against any liability arising from the release of any hazardous substance or hazardous waste (as these terms are defined in the Comprehensive Environmental Response, Compensation and Liability Act of 1980, 42 U.S.C. 9601, et seq. or the Resource Conservation and Recovery Act, 42 U.S.C. 6901, et seq.) on the Right-of-Way (unless the release or threatened release is wholly unrelated to activity of the Right-of-Way holder's activity on the Right-of-Way), or resulting from the activity of the Right-of-Way holder on the Right-of-Way. This agreement applies without regard to whether a release is caused by the holder, its agent, or unrelated third parties.

4. The holder shall be liable for damage or injury to the United States to the extent provided by 43 CFR Sec. 2883.1-4. The holder shall be held to a standard of strict liability for damage or injury to the United States resulting from pipe rupture, fire, or spills caused or substantially aggravated by any of the following within the right-of-way or permit area:

- a. Activities of the holder including, but not limited to construction, operation, maintenance, and termination of the facility.
- b. Activities of other parties including, but not limited to:
  - (1) Land clearing.
  - (2) Earth-disturbing and earth-moving work.
  - (3) Blasting.
  - (4) Vandalism and sabotage.
- c. Acts of God.

The maximum limitation for such strict liability damages shall not exceed one million dollars (\$1,000,000) for any one event, and any liability in excess of such amount shall be determined by the ordinary rules of negligence of the jurisdiction in which the damage or injury occurred.

This section shall not impose strict liability for damage or injury resulting primarily from an act of war or from the negligent acts or omissions of the United States.

5. If, during any phase of the construction, operation, maintenance, or termination of the pipeline, any oil, salt water, or other pollutant should be discharged from the pipeline system, impacting Federal lands, the control and total removal, disposal, and cleaning up of such oil, salt water, or other pollutant, wherever found, shall be the responsibility of the holder, regardless of fault. Upon failure of the holder to control, dispose of, or clean up such discharge on or affecting Federal lands, or to repair all damages resulting therefrom, on the Federal lands, the Authorized Officer may take such measures as he deems necessary to control and clean up the discharge and restore the area, including, where appropriate, the aquatic environment and fish and wildlife habitats, at the full expense of the holder. Such action by the Authorized Officer shall not relieve the holder of any responsibility as provided herein.

6. All construction and maintenance activity will be confined to the authorized right-of-way width of 20 feet. If the pipeline route follows an existing road or buried pipeline right-of-way, the surface pipeline must be installed no farther than 10 feet from the edge of the road or buried pipeline right-of-way. If existing surface pipelines prevent this distance, the proposed surface pipeline must be installed immediately adjacent to the outer surface pipeline. All construction and maintenance activity will be confined to existing roads or right-of-ways.

7. No blading or clearing of any vegetation will be allowed unless approved in writing by the Authorized Officer.

8. The holder shall install the pipeline on the surface in such a manner that will minimize suspension of the pipeline across low areas in the terrain. In hummocky or dune areas, the pipeline will be "snaked" around hummocks and dunes rather than suspended across these features.

9. The pipeline shall be buried with a minimum of 24 inches under all roads, "two-tracks," and trails. Burial of the pipe will continue for 20 feet on each side of each crossing. The condition of the road, upon completion of construction, shall be returned to at least its former state with no bumps or dips remaining in the road surface.

10. The holder shall minimize disturbance to existing fences and other improvements on public lands. The holder is required to promptly repair improvements to at least their former state. Functional use of these improvements will be maintained at all times. The holder will contact the owner of any improvements prior to disturbing them. When necessary to pass through a fence line, the fence shall be braced on both sides of the passageway prior to cutting of the fence. No permanent gates will be allowed unless approved by the Authorized Officer.

11. In those areas where erosion control structures are required to stabilize soil conditions, the holder will install such structures as are suitable for the specific soil conditions being encountered and which are in accordance with sound resource management practices.

12. Excluding the pipe, all above-ground structures not subject to safety requirement shall be painted by the holder to blend with the natural color of the landscape. The paint used shall be a color which simulates "Standard Environmental Colors" – **Shale Green**, Munsell Soil Color No. 5Y 4/2; designated by the Rocky Mountain Five State Interagency Committee.

13. The pipeline will be identified by signs at the point of origin and completion of the right-of-way and at all road crossings. At a minimum, signs will state the holder's name, BLM serial number, and the product being transported. Signs will be maintained in a legible condition for the life of the pipeline.

14. The holder shall not use the pipeline route as a road for purposes other than routine maintenance as determined necessary by the Authorized Officer in consultation with the holder. The holder will take whatever steps are necessary to ensure that the pipeline route is not used as a roadway.

15. Any cultural and/or paleontological resource (historic or prehistoric site or object) discovered by the holder, or any person working on his behalf, on public or Federal land shall be immediately reported to the authorized officer. Holder shall suspend all operations in the immediate area of such discovery until written authorization to proceed is issued by the authorized officer. An evaluation of the discovery will be made by the authorized officer to determine appropriate cultural or scientific values. The holder will be responsible for the cost of evaluation and any decision as to proper mitigation.



measures will be made by the authorized officer after consulting with the holder.

16. The operator shall be held responsible if noxious weeds become established within the areas of operations. Weed control shall be required on the disturbed land where noxious weeds exist, which includes the roads, powerline corridor, and adjacent land affected by the establishment of weeds due to this action. The operator shall consult with the Authorized Officer for acceptable weed control methods, which include following EPA and BLM requirements and policies.

17. Surface pipelines must be less than or equal to 4 inches and a working pressure below 125 psi.

## **IX. INTERIM RECLAMATION**

During the life of the development, all disturbed areas not needed for active support of production operations should undergo interim reclamation in order to minimize the environmental impacts of development on other resources and uses.

Within six (6) months of well completion, operators should work with BLM surface management specialists (Jim Amos: 575-234-5909) to devise the best strategies to reduce the size of the location. Interim reclamation should allow for remedial well operations, as well as safe and efficient removal of oil and gas.

During reclamation, the removal of caliche is important to increasing the success of revegetating the site. Removed caliche that is free of contaminants may be used for road repairs, fire walls or for building other roads and locations. In order to operate the well or complete workover operations, it may be necessary to drive, park and operate on restored interim vegetation within the previously disturbed area. Disturbing revegetated areas for production or workover operations will be allowed. If there is significant disturbance and loss of vegetation, the area will need to be revegetated. Communicate with the appropriate BLM office for any exceptions/exemptions if needed.

All disturbed areas after they have been satisfactorily prepared need to be reseeded with the seed mixture provided below.

Upon completion of interim reclamation, the operator shall submit a Sundry Notices and Reports on Wells, Subsequent Report of Reclamation (Form 3160-5).

## **X. FINAL ABANDONMENT & RECLAMATION**

At final abandonment, well locations, production facilities, and access roads must undergo "final" reclamation so that the character and productivity of the land are restored.

Earthwork for final reclamation must be completed within six (6) months of well plugging. All pads, pits, facility locations and roads must be reclaimed to a satisfactory revegetated, safe, and stable condition, unless an agreement is made with the landowner or BLM to keep the road and/or pad intact.

After all disturbed areas have been satisfactorily prepared, these areas need to be revegetated with the seed mixture provided below. Seeding should be accomplished by drilling on the contour whenever practical or by other approved methods. Seeding may need to be repeated until revegetation is successful, as determined by the BLM.

Operators shall contact a BLM surface protection specialist prior to surface abandonment operations for site specific objectives (Jim Amos: 575-234-5909).

Ground-level Abandoned Well Marker to avoid raptor perching: Upon the plugging and subsequent abandonment of the well, the well marker will be installed at ground level on a plate containing the pertinent information for the plugged well.

## Seed Mixture 2, for Sandy Sites

The holder shall seed all disturbed areas with the seed mixture listed below. The seed mixture shall be planted in the amounts specified in pounds of pure live seed (PLS)\* per acre. There shall be no primary or secondary noxious weeds in the seed mixture. Seed will be tested and the viability testing of seed will be done in accordance with State law (s) and within nine (9) months prior to purchase. Commercial seed will be either certified or registered seed. The seed container will be tagged in accordance with State law(s) and available for inspection by the authorized officer.

Seed will be planted using a drill equipped with a depth regulator to ensure proper depth of planting where drilling is possible. The seed mixture will be evenly and uniformly planted over the disturbed area (smaller/heavier seeds have a tendency to drop the bottom of the drill and are planted first). The holder shall take appropriate measures to ensure this does not occur. Where drilling is not possible, seed will be broadcast and the area shall be raked or chained to cover the seed. When broadcasting the seed, the pounds per acre are to be doubled. The seeding will be repeated until a satisfactory stand is established as determined by the authorized officer. Evaluation of growth will not be made before completion of at least one full growing season after seeding.

Species to be planted in pounds of pure live seed\* per acre:

<u>Species</u>	<u>lb/acre</u>
Sand dropseed ( <i>Sporobolus cryptandrus</i> )	1.0
Sand love grass ( <i>Eragrostis trichodes</i> )	1.0
Plains bristlegrass ( <i>Setaria macrostachya</i> )	2.0

\*Pounds of pure live seed:

Pounds of seed x percent purity x percent germination = pounds pure live seed