

RECEIVED

SEP 03 2013

DISTRICT I
1625 N. French Dr., Hobbs, NM 88241
Phone: (575) 393-6161 Fax: (505) 334-6178

DISTRICT II
811 S. First St., Artesia, NM 88210
Phone: (575) 748-1283 Fax: (575) 748-9720

DISTRICT III
1000 Rio Brazos Road, Aztec, NM 87410
Phone: (505) 334-6178 Fax: (505) 334-6170

DISTRICT IV
1220 S. St. Francis Dr., Santa Fe, NM 87505
Phone: (505) 476-3460 Fax: (505) 476-3462

NMOC D ARTESIA

State of New Mexico
Energy, Minerals & Natural Resources Department

OIL CONSERVATION DIVISION

1220 South St. Francis Dr.
Santa Fe, New Mexico 87505

Form C-102

Revised August 1, 2011

Submit one copy to appropriate
District Office

☒ AMENDED REPORT

WELL LOCATION AND ACREAGE DEDICATION PLAT

API Number 30-015-41251	Pool Code 96473	Pool Name Pierce Crossing Bone Springs East
Property Code 39668	Property Name CEDAR CANYON 16 STATE	Well Number 7H
OGRID No. 16696	Operator Name OXY U.S.A. INC.	Elevation 2926

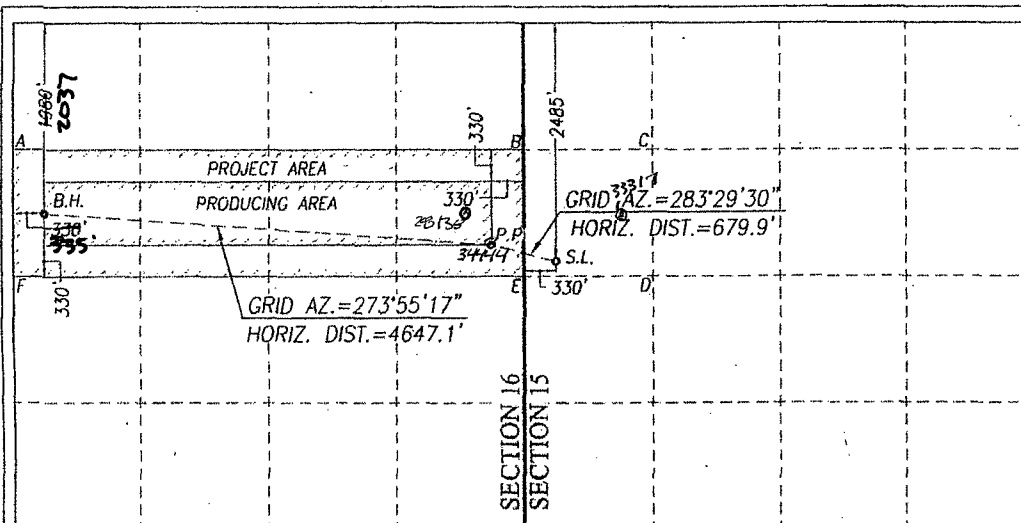
Surface Location

UL or lot No.	Section	Township	Range	Lot Idn	Feet from the	North/South line	Feet from the	East/West line	County
E	15	24-S	29-E		2485	NORTH	330	WEST	EDDY

Bottom Hole Location If Different From Surface

UL or lot No.	Section	Township	Range	Lot Idn	Feet from the	North/South line	Feet from the	East/West line	County
E	16	24-S	29-E		1980 2037	NORTH	330 335	WEST	EDDY
Dedicated Acres 160	Joint or Infill N	Consolidation Code	Order No. Top Prod Int. 388 FEL 2302 FNL H - Sec 15						

NO ALLOWABLE WILL BE ASSIGNED TO THIS COMPLETION UNTIL ALL INTERESTS HAVE BEEN CONSOLIDATED OR A NON-STANDARD UNIT HAS BEEN APPROVED BY THE DIVISION



OPERATOR CERTIFICATION

I hereby certify that the information herein is true and complete to the best of my knowledge and belief, and that this organization either owns a working interest or unleased mineral interest in the land including the proposed bottom hole location or has a right to drill this well at this location pursuant to a contract with an owner of such mineral or working interest, or to a voluntary pooling agreement or a compulsory pooling order heretofore entered by the division.

David Stewart 4/5/13
Signature Date
David Stewart Reg. A.D.O.
Printed Name
david.stewart@oxy.com
E-mail Address

SURVEYOR CERTIFICATION

I hereby certify that the well location shown on this plat was plotted from field notes of actual surveys made by me or under my supervision, and that the same is true and correct to the best of my belief.

APRIL 1, 2013

Date of Survey
Signature & Seal of Professional Surveyor:

GARY G. EIDSON
NEW MEXICO
12641
BKI.
Certification Number Gary G. Eidson 12641
Ronald J. Eidson 3239
W.S.C. W.O. 13.11.0335

CORNER COORDINATES TABLE

A - Y=444309.4 N, X=603845.0 E
B - Y=444340.2 N, X=609137.2 E
C - Y=444338.8 N, X=610463.2 E
D - Y=443011.9 N, X=610470.4 E
E - Y=443013.2 N, X=609146.1 E
F - Y=442982.3 N, X=603852.8 E

GEODETIC COORDINATES NAD 27 NME

SURFACE LOCATION
Y=443182.6 N
X=609474.9 E
LAT.=32.217930° N
LONG.=103.979344° W

BOTTOM HOLE LOCATION
Y=443658.9 N
X=604178.8 E
LAT.=32.219286° N
LONG.=103.996464° W

PENETRATION POINT

Y=443341.1 N
X=608813.9 E
LAT.=32.218372° N
LONG.=103.981479° W

SCALE: 1"=2000'