

District I1625 N. French Dr., Hobbs, NM 88240
Phone:(575) 393-6161 Fax:(575) 393-0720**District II**811 S. First St., Artesia, NM 88210
Phone:(575) 748-1283 Fax:(575) 748-9720**District III**1000 Rio Brazos Rd., Aztec, NM 87410
Phone:(505) 334-6178 Fax:(505) 334-6170**District IV**1220 S. St Francis Dr., Santa Fe, NM 87505
Phone:(505) 476-3470 Fax:(505) 476-3462

State of New Mexico
Energy, Minerals and Natural
Resources
Oil Conservation Division
1220 S. St Francis Dr.
Santa Fe, NM 87505

Form C-101
August 1, 2011

Permit 173084

~ AMENDED ~

APPLICATION FOR PERMIT TO DRILL, RE-ENTER, DEEPEN, PLUGBACK, OR ADD A ZONE

1. Operator Name and Address DEVON ENERGY PRODUCTION COMPANY, LP 333 W. Sheridan Avenue Oklahoma City, OK 73102		2. OGRID Number 6137
		3. API Number 30-015-41649
4. Property Code 40125	5. Property Name Cotton Draw Unit SWD	6. Well No. 181

7. Surface Location

UL - Lot	Section	Township	Range	Lot Idn	Feet From	N/S Line	Feet From	E/W Line	County
H	36	24S	31E	H	1568	N	1189	E	Eddy

8. Proposed Bottom Hole Location

UL - Lot	Section	Township	Range	Lot Idn	Feet From	N/S Line	Feet From	E/W Line	County
H	36	24S	31E	H	1568	N	1189	E	Eddy

9. Pool Information

SWD;DEVONIAN	96101
--------------	-------

Additional Well Information

11. Work Type New Well	12. Well Type S OL	13. Cable/Rotary R	14. Lease Type State	15. Ground Level Elevation 3511
16. Multiple N	17. Proposed Depth 19770	18. Formation Devonian	19. Contractor	20. Spud Date 10/1/2013
Depth to Ground water		Distance from nearest fresh water well		Distance to nearest surface water

☒ We will be using a closed-loop system in lieu of lined pits**21. Proposed Casing and Cement Program**

Type	Hole Size	Casing Size	Casing Weight/ft.	Setting Depth	Sacks of Cement	Estimated TOC
Surf	26	20	94	750	1750	0
Int1	17.5	13.375	68	4400	1910	0
Int2	12.25	9.625	47	11650	1930	3500
Prod	8.5	7	32	16742	800	10500
Surf	5.875	0	0	19770	0	0

Casing/Cement Program: Additional Comments

20" Surface: Tail: 1750 sx CI C Cmt + 2% CACI2 + 3#Kol seal/sk @ 14.8 ppg, Yield: 1.33 cf/sk, TOC @ Surf: 13-3/8" 1st Inter: Lead: 1360 sx CI C Cmt + 2% bwoc CACI2 + 0.125 lbs/sk Poly-E-Flake + 4% bwoc Bent + 70.1% FW, 12.9 ppg, Yld: 1.85 cf/sk, TOC @ surf, Tail: 550 sx CI C Cmt + 2% bwoc CACI2, Yld: 1.33 cf/sk 9-5/8" 2nd Inter: Lead: 1460 sx (65:35) CI C Cmt:Poz (Fly Ash): + 5% bwow NACI + 0.125 lbs/sk Poly-E-Flake + 6% bwoc Bent + 70.9% FW, 11.5 ppg, Yld: 2.57 cf/sk, TOC @ 3500, Tail: 470 sx CI C Cmt + 0.125 lbs/sk Poly-E-Flake + 63.5% Wtr, 14.4 ppg, Yld: 1.33 cf/sk. 7" Prod: Tail: 800 sx (50:50) CI H Cmt:Poz (Fly Ash) + 1 lb/sk NACI + 0.5% bwoc HALAD-344 + 0.4% bwoc CFR-3 + 0.1% bwoc HR-601 + 2% bwoc Bent + 58.8% FW, 14.5 ppg, Yld: 1.22 cf/sk TOC for All Strings: Surface: 0, 1st Intermediate: 0, 2nd Intermediate: 3,500, Production: 10,500' ft Note: This will be an open hole completion, thus the hole interval is deeper than the 7" production casing depth.

22. Proposed Blowout Prevention Program

Type	Working Pressure	Test Pressure	Manufacturer
Annular	5000	5000	

23. I hereby certify that the information given above is true and complete to the best of my knowledge and belief.
 I further certify I have complied with 19.15.14.9 (A) NMAC ☒ and/or 19.15.14.9 (B) NMAC ☒ if applicable.

OIL CONSERVATION DIVISION

Signature:			
Printed Name:	Electronically filed by Randy Bolles	Approved By:	Randy Dade
Title:	Manager, Regulatory Affairs	Title:	District Supervisor
Email Address:	randy.bolles@dmn.com	Approved Date:	9/11/2013
		Expiration Date:	9/11/2015

Date:	9/10/2013	Phone: 405-228-8588	Conditions of Approval Attached
-------	-----------	---------------------	---------------------------------

District I

1625 N. French Dr., Hobbs, NM 88240
Phone:(575) 393-6161 Fax:(575) 393-0720

District II

811 S. First St., Artesia, NM 88210
Phone:(575) 748-1283 Fax:(575) 748-9720

District III

1000 Rio Brazos Rd., Aztec, NM 87410
Phone:(505) 334-6178 Fax:(505) 334-6170

District IV

1220 S. St Francis Dr., Santa Fe, NM 87505
Phone:(505) 476-3470 Fax:(505) 476-3462

State of New Mexico
Energy, Minerals and Natural
Resources
Oil Conservation Division
1220 S. St Francis Dr.
Santa Fe, NM 87505

Form APD Comments

Permit 173084

PERMIT COMMENTS

Operator Name and Address: DEVON ENERGY PRODUCTION COMPANY, LP [6137] 333 W. Sheridan Avenue Oklahoma City, OK 73102	API Number: 30-015-41649 Well: Cotton Draw Unit SWD #181
---	---

Created By	Comment	Comment Date
priechers	The BOP system used to drill the 26" hole will consist of a 30" 2M Annular preventer. The BOP system will be tested as per BLM Onshore Oil and Gas Order 2 as a 2M system prior to drilling out the casing shoe. The BOP system used to drill the 17-1/2" hole will consist of a 20" 2M Annular preventer. The BOP system will be tested as per BLM Onshore Oil and Gas Order 2 as a 2M system prior to drilling out the casing shoe. The BOP system used to drill the 12-1/4" and 8-1/2" holes will consist of a 13-5/8" 5M Double Ram and Annular preventer. The BOP system will be tested as per BLM Onshore Oil	9/10/2013
priechers	The BOP system used to drill the 12-1/4" and 8-1/2" holes will consist of a 13-5/8" 5M Double Ram and Annular preventer. The BOP system will be tested as per BLM Onshore Oil and Gas Order 2 as a 5M system prior to drilling out the casing shoe.	9/10/2013
priechers	The BOP system used to drill the 12-1/4" and 8-1/2" holes will consist of a 13-5/8" 5M Double Ram and Annular preventer. The BOP system will be tested as per BLM Onshore Oil and Gas Order 2 as a 5M system prior to drilling out the casing shoe.	9/10/2013
priechers	The BOP system used to drill the 12-1/4" and 8-1/2" holes will consist of a 13-5/8" 5M Double Ram and Annular preventer. The BOP system will be tested as per BLM Onshore Oil and Gas Order 2 as a 5M system prior to drilling out the casing shoe.	9/10/2013
priechers	The pipe rams will be operated and checked as per Onshore Order No 2. A 2" kill line and 3" choke line will be incorporated into the drilling spool below the ram BOP. In addition to the rams and annular preventer, additional BOP accessories include a kelly cock, floor safety valve, choke lines, and choke manifold rated at 5,000 psi WP.	9/10/2013
CSHAPARD	Well Type: SWD	9/11/2013

☐ AMENDED REPORT

WELL LOCATION AND ACREAGE DEDICATION PLAT

¹ API Number 30-015-41649	² Pool Code 96101	³ Pool Name SWD; Devonian
⁴ Property Code 40125	⁵ Property Name COTTON DRAW UNIT SWD	⁶ Well Number 181
⁷ OGRID No. 6137	⁸ Operator Name DEVON ENERGY PRODUCTION COMPANY, L.P.	⁹ Elevation 3511.3

B Surface Location									
UL or lot no.	Section	Township	Range	Lot 1th	Feet from the	North/South line	Feet from the	East/West line	County
H	36	24 S	31 E		1568	NORTH	1189	EAST	EDDY

" Bottom Hole Location if Different From Surface									
UL or lot no.	Section	Township	Range	Lot Idn	Feet from the	North/South line	Feet from the	East/West line	County

¹² Dedicated Acres 40	¹³ Joint or Infill	¹⁴ Consolidation Code	¹⁵ Order No.
-------------------------------------	-------------------------------	----------------------------------	-------------------------

No allowable will be assigned to this completion until all interests have been consolidated or a non-standard unit has been approved by the division.

N89°39'31"E 2641.29 FT		N89°39'22"E 2641.18 FT	
<p>NW CORNER SEC. 36 LAT. = 32.1810643"N LONG. = 103.7400380"W</p> <p>NMSP EAST (FT) N = 430119.30 E = 724891.03</p>	<p>N O CORNER SEC. 36 LAT. = 32.1810872"N LONG. = 103.7315028"W</p> <p>NMSP EAST (FT) N = 430135.04 E = 727551.89</p>	<p>NE CORNER SEC. 36 LAT. = 32.1810898"N LONG. = 103.7229679"W</p> <p>NMSP EAST (FT) N = 430150.88 E = 730172.25</p>	<p>SE CORNER SEC. 36 LAT. = 32.1738293"N LONG. = 103.7229613"W</p> <p>NMSP EAST (FT) N = 427509.60 E = 730189.13</p>
<p>W O CORNER SEC. 36 LAT. = 32.1738255"N LONG. = 103.7400604"W</p> <p>NMSP EAST (FT) N = 427478.61 E = 724898.64</p>			
<p>COTTON DRAW UNIT #181 SWD</p> <p>ELEV. = 3511.3'</p> <p>LAT. = 32.1767786"N (NAD83) LONG. = 103.7268063"W</p> <p>NMSP EAST (FT) N = 428375.78 E = 728593.53</p>			
<p>NOTE: LATITUDE AND LONGITUDE COORDINATES ARE SHOWN USING THE NORTH AMERICAN DATUM OF 1983 (NAD83). LISTED NEW MEXICO STATE PLANE EAST COORDINATES ARE GRID (NAD83). BASES OF BEARING AND DISTANCES USED ARE NEW MEXICO STATE PLANE EAST COORDINATES MODIFIED TO THE SURFACE.</p>			
<p>LOT 1 LOT 2 LOT 3 LOT 4</p>			
<p>SW CORNER SEC. 36 LAT. = 32.1666604"N LONG. = 103.7400932"W</p> <p>NMSP EAST (FT) N = 424872.03 E = 724905.34</p>	<p>S O CORNER SEC. 36 LAT. = 32.1666199"N LONG. = 103.7315230"W</p> <p>NMSP EAST (FT) N = 424872.00 E = 727554.88</p>	<p>SE CORNER SEC. 36 LAT. = 32.1665815"N LONG. = 103.7229565"W</p> <p>NMSP EAST (FT) N = 424872.96 E = 730205.72</p>	<p>SW CORNER SEC. 36 LAT. = 32.1666604"N LONG. = 103.7400932"W</p> <p>NMSP EAST (FT) N = 424872.03 E = 724905.34</p>
N89°59'58"W 2650.11 FT		S89°58'45"W 2651.42 FT	

SURVEYOR CERTIFICATION

I hereby certify that the information contained herein is true and accurate to the best of my knowledge and belief, and that this organization either owns a working interest or a vested mineral interest in the land including the proposed bottom hole location or has a right to drill this well at this location pursuant to a contract with an owner of such a mineral or working interest, or to a voluntary pooling agreement or a compulsory pooling order heretofore entered by the division.

Patti Riechers 09/11/2013
Signature Date

Patti Riechers, Regulatory Specialist

Printed Name

patti.riechers@dmn.com

Email Address

"SURVEYOR CERTIFICATION"

I hereby certify that the well location shown on this plat was plotted from field notes of actual surveys made by me or under my supervision, and that the same is true and correct to the best of my belief.

AUGUST 29, 2013

Date of Survey

[Signature]

Signature and Seal of Professional Surveyor

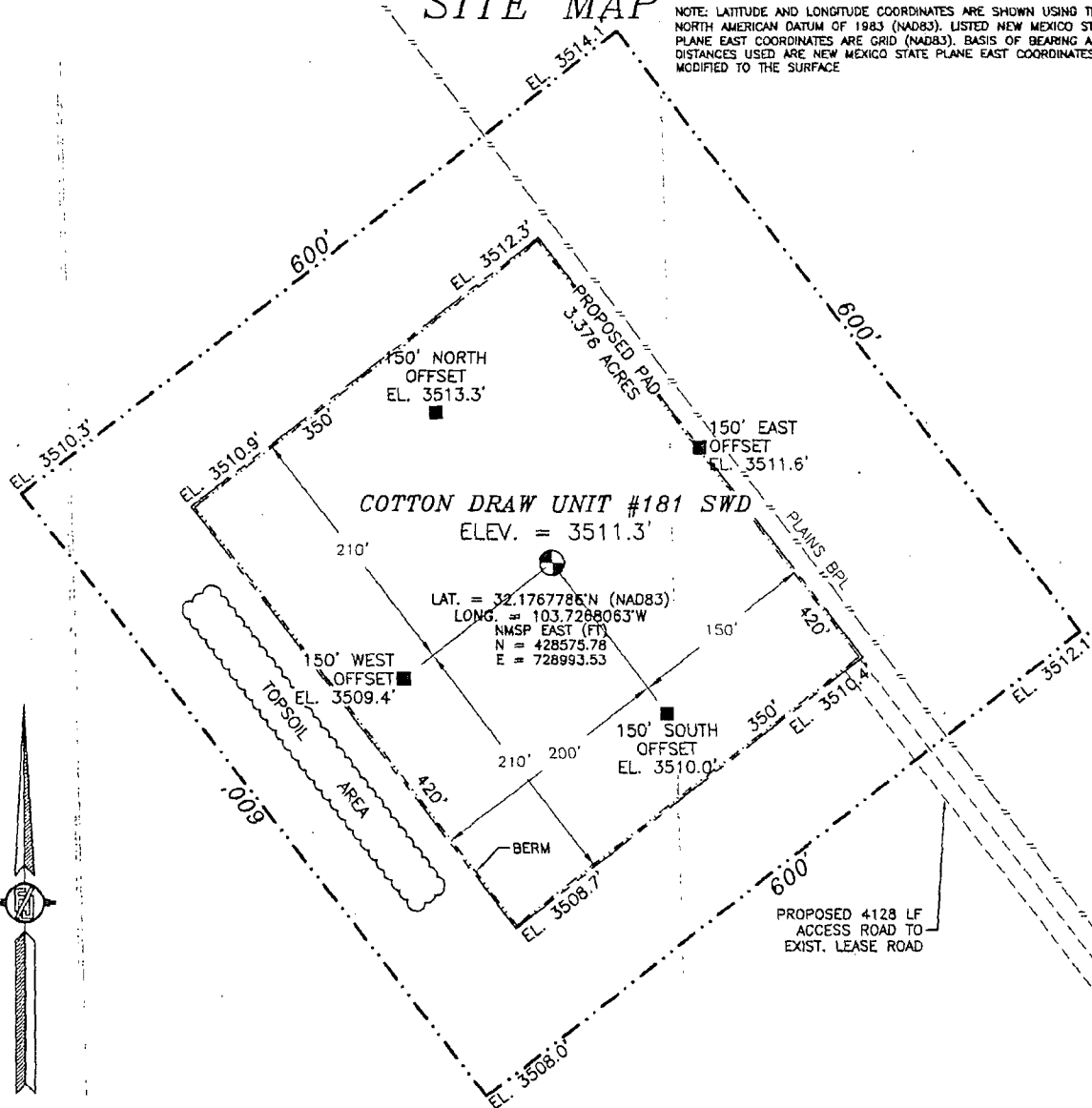
Certificate Number: FILLMORE COUNTY, NEW MEXICO, PLS 12797

SURVEY NO. 2181A

SECTION 36, TOWNSHIP 24 SOUTH, RANGE 31 EAST, N.M.P.M.
EDDY COUNTY, STATE OF NEW MEXICO

SITE MAP

NOTE: LATITUDE AND LONGITUDE COORDINATES ARE SHOWN USING THE NORTH AMERICAN DATUM OF 1983 (NAD83). LISTED NEW MEXICO STATE PLANE EAST COORDINATES ARE GRID (NAD83). BASIS OF BEARING AND DISTANCES USED ARE NEW MEXICO STATE PLANE EAST COORDINATES MODIFIED TO THE SURFACE



0 12 60 120 240

SCALE 1" = 120'

DIRECTIONS TO LOCATION

FROM THE INTERSECTION OF STATE HIGHWAY 1 (ORLA HIGHWAY) AND MONSANTO ROAD GO WEST ON MONSANTO ROAD APPROX. 2.1 MILES. ROAD TURNS RIGHT (NORTH) GO NORTH APPROX. 0.9 MILES. ROAD TURNS LEFT (WEST) GO WEST APPROX. 2.0 MILES. ROAD TURNS RIGHT (NORTH) GO NORTH APPROX. 1.8 MILES. ROAD TURNS LEFT (WEST) GO WEST APPROX. 0.3 MILES. ROAD TURNS RIGHT (NORTH) GO NORTH CROSS CATTLE GUARD APPROX. 0.4 MILES. TURN RIGHT (EAST) GO EAST APPROX. 1.2 MILES TO EXISTING DEVON COTTON DRAW UNIT #116H. CENTERLINE OF PROPOSED ROAD STARTS ON THE SOUTH EDGE OF PAD, GO EAST APPROX. 400' AND TURN LEFT (NORTH) ON EAST EDGE OF PAD. CENTERLINE PROPOSED ROAD GOES (NORTH) APPROX. 0.5 MILES. ROAD TURNS LEFT (NORTHWEST) PARALLELING PIPELINE APPROX. 0.2 MILES TO LOCATION.

DEVON ENERGY PRODUCTION COMPANY, L.P.

COTTON DRAW UNIT #181 SWD

LOCATED 1568 FT. FROM THE NORTH LINE

AND 1189 FT. FROM THE EAST LINE OF

SECTION 36, TOWNSHIP 24 SOUTH,

RANGE 31 EAST, N.M.P.M.

EDDY COUNTY, STATE OF NEW MEXICO

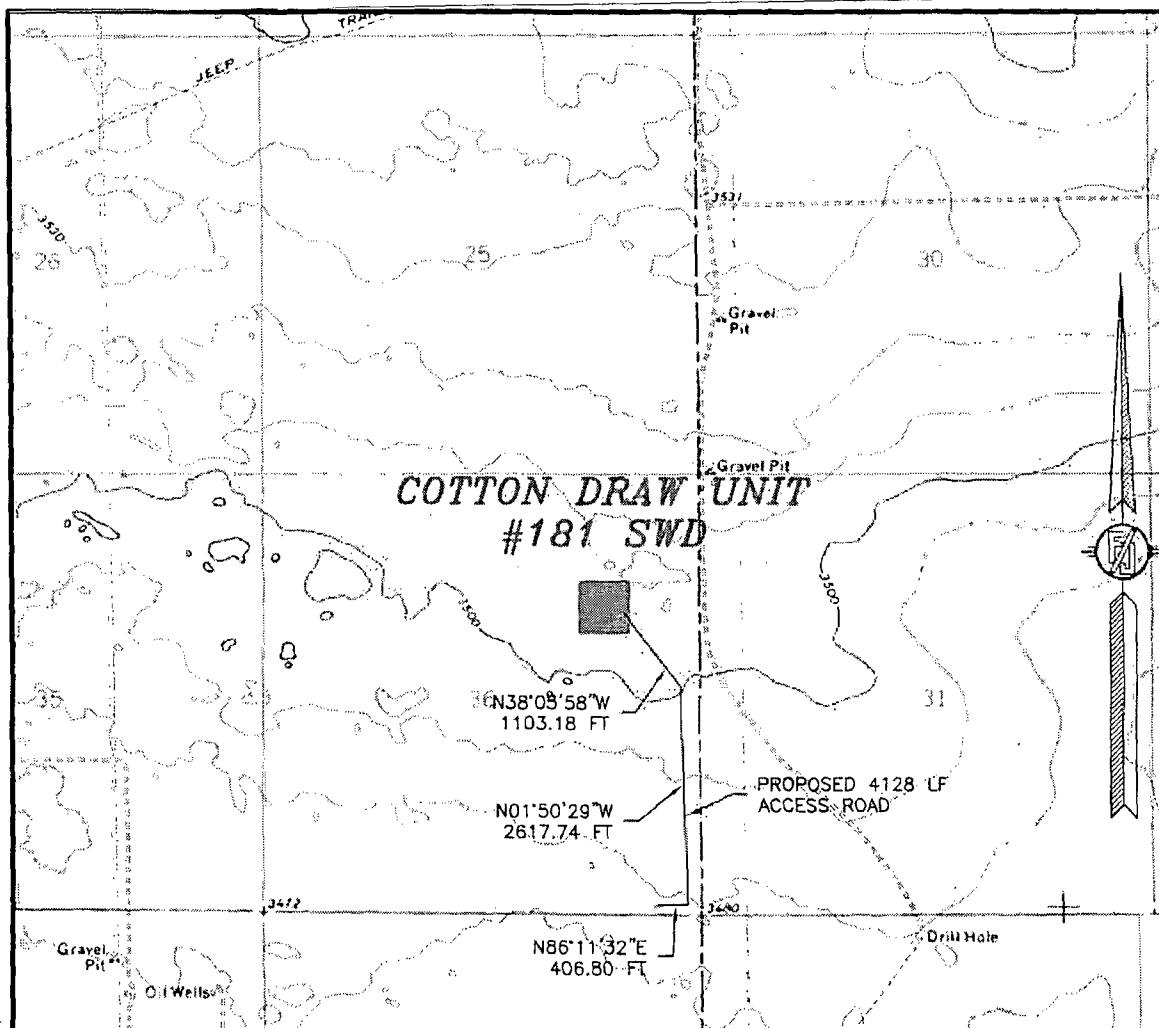
AUGUST 2, 2013

SURVEY NO. 2181

MADRON SURVEYING, INC. 301 SOUTH CANAL (575) 234-3341

CARLSBAD, NEW MEXICO

SECTION 36, TOWNSHIP 24 SOUTH, RANGE 31 EAST, N.M.P.M.
EDDY COUNTY, STATE OF NEW MEXICO
LOCATION VERIFICATION MAP



USGS QUAD MAP:
PADUCA BREAKS NW

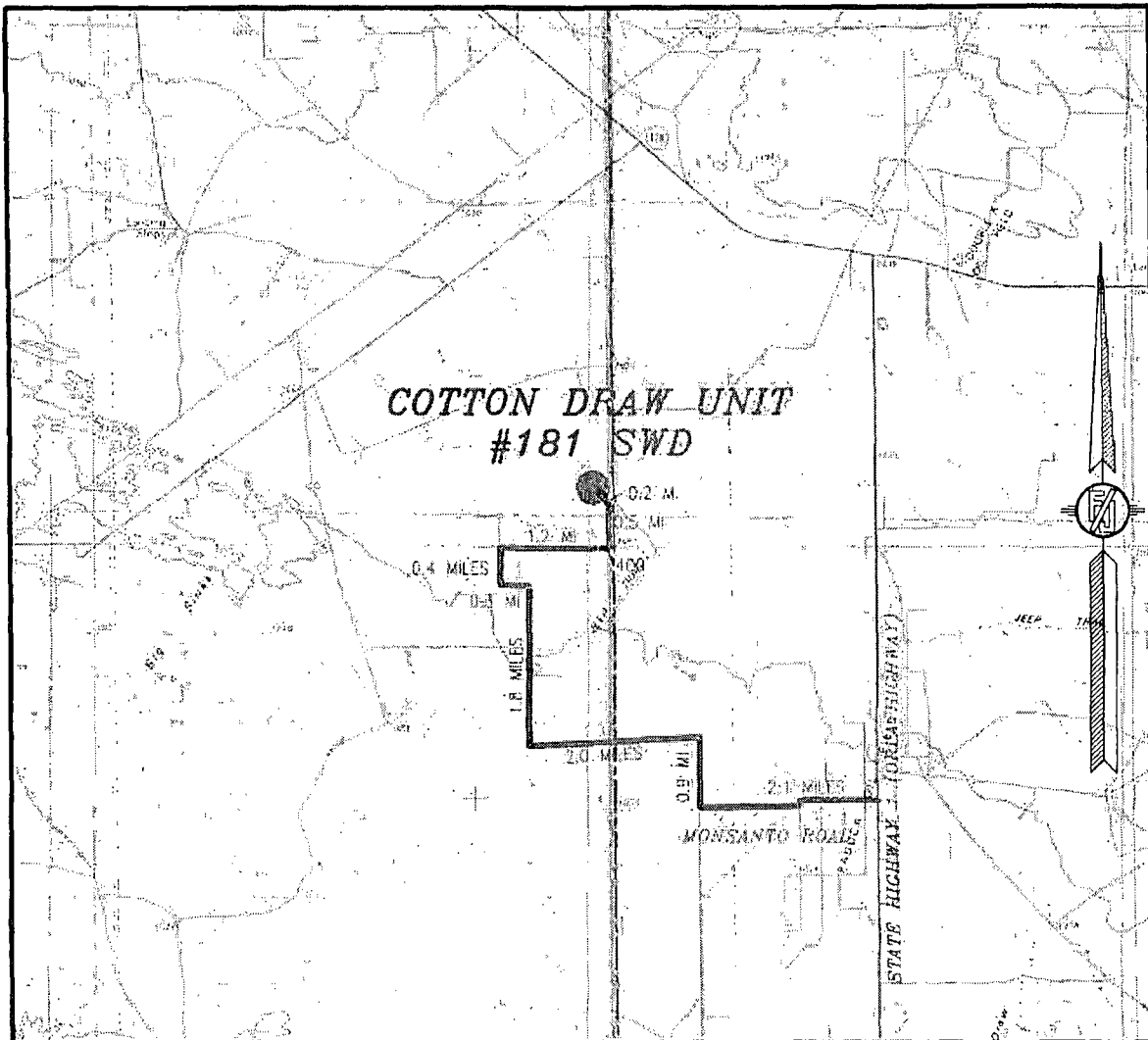
NOT TO SCALE

DEVON ENERGY PRODUCTION COMPANY, L.P.
COTTON DRAW UNIT #181 SWD
LOCATED 1568 FT. FROM THE NORTH LINE
AND 1189 FT. FROM THE EAST LINE OF
SECTION 36, TOWNSHIP 24 SOUTH,
RANGE 31 EAST, N.M.P.M.
EDDY COUNTY, STATE OF NEW MEXICO

AUGUST 2, 2013

MADRON SURVEYING, INC. 301 SOUTH CANAL CARLSBAD, NEW MEXICO
(575) 234-3341 SURVEY NO. 2181

SECTION 36, TOWNSHIP 24 SOUTH, RANGE 31 EAST, N.M.P.M.
EDDY COUNTY, STATE OF NEW MEXICO
VICINITY MAP



NOT TO SCALE

DEVON ENERGY PRODUCTION COMPANY, L.P.

COTTON DRAW UNIT #181 SWD

LOCATED 1568 FT. FROM THE NORTH LINE
AND 1189 FT. FROM THE EAST LINE OF
SECTION 36, TOWNSHIP 24 SOUTH,
RANGE 31 EAST, N.M.P.M.
EDDY COUNTY, STATE OF NEW MEXICO

AUGUST 2, 2013

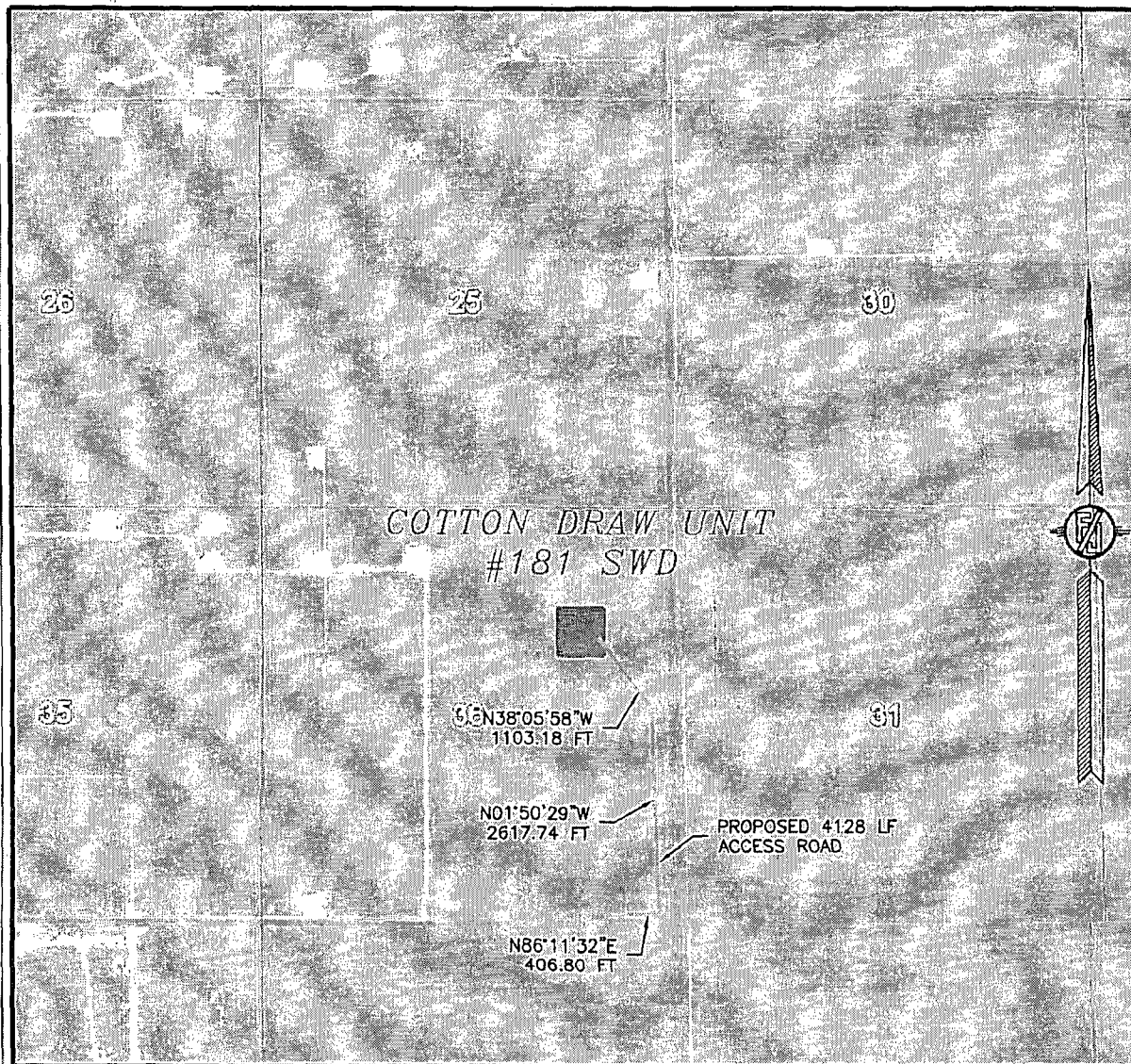
DIRECTIONS TO LOCATION

FROM THE INTERSECTION OF STATE HIGHWAY 1 (ORLA HIGHWAY) AND MONSANTO ROAD GO WEST ON MONSANTO ROAD APPROX. 2.1 MILES, ROAD TURNS RIGHT (NORTH) GO NORTH APPROX. 0.9 MILES, ROAD TURNS LEFT (WEST) GO WEST APPROX. 2.0 MILES, ROAD TURNS RIGHT (NORTH) GO NORTH APPROX. 1.8 MILES, ROAD TURNS LEFT (WEST) GO WEST APPROX. 0.3 MILES, ROAD TURNS RIGHT (NORTH) GO NORTH, CROSS CATTLE GUARD APPROX. 0.4 MILES, TURN RIGHT (EAST) GO EAST APPROX. 1.2 MILES TO EXISTING DEVON COTTON DRAW UNIT #116H. CENTERLINE OF PROPOSED ROAD STARTS ON THE SOUTH EDGE OF PAD, GO EAST APPROX. 400' AND TURN LEFT (NORTH) ON EAST EDGE OF PAD, CENTERLINE PROPOSED ROAD GOES (NORTH) APPROX. 0.5 MILES, ROAD TURNS LEFT (NORTHWEST) PARALLELING PIPELINE APPROX. 0.2 MILES TO LOCATION.

SURVEY NO. 2181

MADRON SURVEYING, INC. 301 SOUTH CANAL (575) 234-3341 CARLSBAD, NEW MEXICO

SECTION 36, TOWNSHIP 24 SOUTH, RANGE 31 EAST, N.M.P.M.
EDDY COUNTY, STATE OF NEW MEXICO
AERIAL PHOTO



NOT TO SCALE
AERIAL PHOTO:
GOOGLE EARTH
MARCH 2012

DEVON ENERGY PRODUCTION COMPANY, L.P.
COTTON DRAW UNIT #181 SWD
LOCATED 1568 FT. FROM THE NORTH LINE
AND 1189 FT. FROM THE EAST LINE OF
SECTION 36, TOWNSHIP 24 SOUTH,
RANGE 31 EAST, N.M.P.M.
EDDY COUNTY, STATE OF NEW MEXICO

AUGUST 2, 2013

SURVEY NO. 2181

MADRON SURVEYING, INC. 301 SOUTH CANAL (575) 234-3341 CARLSBAD, NEW MEXICO

Permit Conditions of Approval

API: 30-015-41649

OCD Reviewer	Condition
CSHAPARD	Once the well is spud, to prevent ground water contamination through whole or partial conduits from the surface, the operator shall drill without interruption through the fresh water zone or zones and shall immediately set in cement the water protection string.