

District I
1625 N. French Dr., Hobbs, NM 88240
Phone: (575) 393-6161 Fax: (575) 393-0720
District II
811 S. First St., Artesia, NM 88210
Phone: (575) 748-1283 Fax: (575) 748-9720
District III
1000 Rio Brazos Road, Aztec, NM 87410
Phone: (505) 334-6178 Fax: (505) 334-6170
District IV
1220 S. St. Francis Dr., Santa Fe, NM 87505
Phone: (505) 476-3460 Fax: (505) 476-3462

State of New Mexico
Energy, Minerals & Natural Resources Department
OIL CONSERVATION DIVISION
1220 South St. Francis Dr.
Santa Fe, NM 87505

RECEIVED

SEP 16 2013

Form C-102

Revised August 1, 2011

NMOC D ARTESIA

Submit one copy to appropriate

District Office

☐ AMENDED REPORT

WELL LOCATION AND ACREAGE DEDICATION PLAT

¹ API Number 30-015 41650	² Pool Code 2713	³ Pool Name Avalon, Bone Spring, East
⁴ Property Code 39822	⁵ Property Name CARLSBAD ; B.S., EAST	⁶ Well Number 7H
⁷ OGRID No. 6137	⁸ Operator Name DEVON ENERGY PRODUCTION COMPANY, L.P.	⁹ Elevation 3186.9

¹⁰ Surface Location

UL or lot no.	Section	Township	Range	Lot Idn	Feet from the	North/South line	Feet from the	East/West line	County
C	13	21 S	27 E		150	NORTH	1980	WEST	EDDY

¹¹ Bottom Hole Location If Different From Surface

UL or lot no.	Section	Township	Range	Lot Idn	Feet from the	North/South line	Feet from the	East/West line	County
N	13	21 S	27 E		330	SOUTH	1700	WEST	EDDY

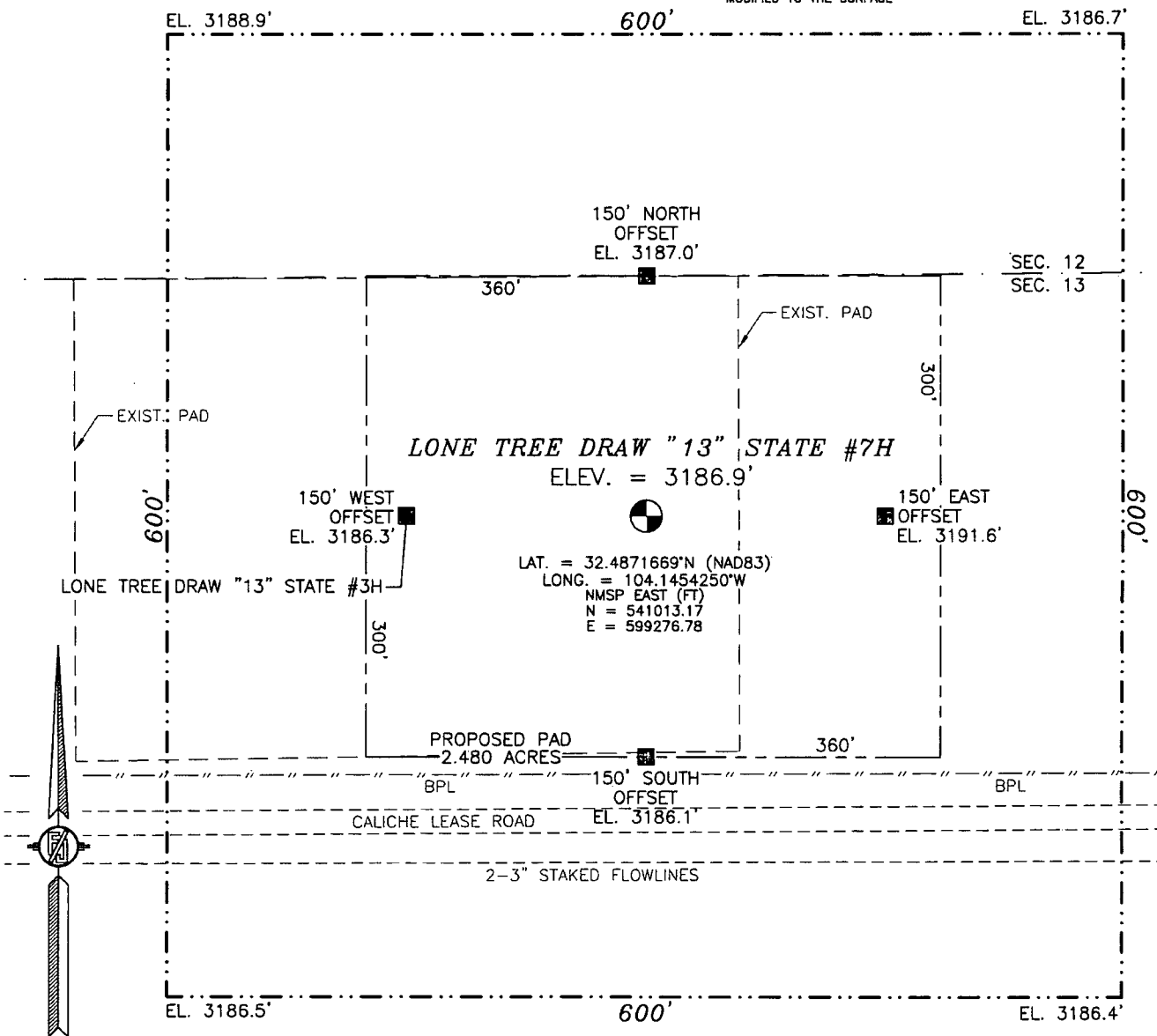
¹² Dedicated Acres 160	¹³ Joint or Infill	¹⁴ Consolidation Code	¹⁵ Order No.
---	-------------------------------	----------------------------------	-------------------------

No allowable will be assigned to this completion until all interests have been consolidated or a non-standard unit has been approved by the division.

<p>N89°39'37"E 2683.56 FT</p> <p>NW CORNER SEC. 13 LAT. = 32.4875564°N LONG. = 104.1518460°W NMSP EAST (FT) N = 541151.41 E = 597296.70</p> <p>W O CORNER SEC. 13 LAT. = 32.4802578°N LONG. = 104.1518272°W NMSP EAST (FT) N = 538496.22 E = 597307.03</p> <p>SW CORNER SEC. 13 LAT. = 32.4729694°N LONG. = 104.1517858°W NMSP EAST (FT) N = 535844.76 E = 597324.31</p> <p>NOTE: LATITUDE AND LONGITUDE COORDINATES ARE SHOWN USING THE NORTH AMERICAN DATUM OF 1983 (NAD83). LISTED NEW MEXICO STATE PLANE EAST COORDINATES ARE GRID (NAD83). BASIS OF BEARING AND DISTANCES USED ARE NEW MEXICO STATE PLANE EAST COORDINATES MODIFIED TO THE SURFACE.</p>		<p>N89°38'05"E 2685.30 FT</p> <p>N O CORNER SEC. 13 LAT. = 32.4875872°N LONG. = 104.1431449°W NMSP EAST (FT) N = 541167.32 E = 599979.57</p> <p>NE CORNER SEC. 13 LAT. = 32.4876208°N LONG. = 104.1344381°W NMSP EAST (FT) N = 541184.43 E = 602664.17</p> <p>E O CORNER SEC. 13 LAT. = 32.4803890°N LONG. = 104.1344261°W NMSP EAST (FT) N = 538553.51 E = 602672.78</p> <p>SE CORNER SEC. 13 LAT. = 32.4731639°N LONG. = 104.1344162°W NMSP EAST (FT) N = 535925.08 E = 602680.72</p>		<p>¹⁷ OPERATOR CERTIFICATION</p> <p>I hereby certify that the information contained herein is true and complete to the best of my knowledge and belief, and that this organization either owns a working interest or unleased mineral interest in the land including the proposed bottom hole location or has a right to drill this well at this location pursuant to a contract with an owner of such a mineral or working interest, or to a voluntary pooling agreement or a compulsory pooling order heretofore entered by the division.</p> <p>Signature: <i>[Signature]</i> Date: 9/12/2013</p> <p>Printed Name: Ryan DeLong</p> <p>E-mail Address: ryan.delong@dvn.com</p>
<p>150'</p> <p>SURFACE LOCATION</p> <p>LONE TREE DRAW "13" STATE #7H</p> <p>ELEV. = 3186.9'</p> <p>LAT. = 32.4871669°N (NAD83) LONG. = 104.1454250°W NMSP EAST (FT) N = 541013.17 E = 599276.78</p> <p>330'</p> <p>BOTTOM OF HOLE</p> <p>S O CORNER SEC. 13 LAT. = 32.4730671°N LONG. = 104.1431031°W NMSP EAST (FT) N = 535884.98 E = 600001.86</p>		<p>2652.15 FT</p> <p>2652.85 FT</p> <p>2652.80 FT</p> <p>2678.49 FT</p> <p>2679.80 FT</p> <p>2678.49 FT</p> <p>2679.80 FT</p> <p>2678.49 FT</p> <p>2679.80 FT</p>		<p>¹⁸ SURVEYOR CERTIFICATION</p> <p>I hereby certify that the well location shown on this plat was plotted from field notes of actual surveys made by me or under my supervision, and that the same is true and correct to the best of my belief.</p> <p>MAY 9, 2013</p> <p>Date of Survey</p> <p>Signature and Seal of Professional Surveyor: <i>[Signature]</i></p> <p>Certificate Number: FILMON F. JARAMILLO, PLS 12797</p> <p>SURVEY NO. 1852</p>

SECTION 13, TOWNSHIP 21 SOUTH, RANGE 27 EAST, N.M.P.M.
 EDDY COUNTY, STATE OF NEW MEXICO
SITE MAP

NOTE: LATITUDE AND LONGITUDE COORDINATES ARE SHOWN USING THE NORTH AMERICAN DATUM OF 1983 (NAD83). LISTED NEW MEXICO STATE PLANE EAST COORDINATES ARE GRID (NAD83). BASIS OF BEARING AND DISTANCES USED ARE NEW MEXICO STATE PLANE EAST COORDINATES MODIFIED TO THE SURFACE



0 10 50 100 200

SCALE 1" = 100'

DIRECTIONS TO LOCATION

FROM CR 600 (RAINS) AND CR 237 (ANGEL RANCH ROAD) AND CALICHE LEASE ROAD GO NORTHWEST ON CALICHE LEASE ROAD 0.1 MILE, TURN RIGHT AND GO SOUTHEAST 0.6 MILES, BEND LEFT AND GO EAST 1.0 MILES, TURN RIGHT AND GO SOUTH 0.6 MILES, TURN LEFT AND GO EAST 0.7 MILES, TURN LEFT AND GO NORTH 0.15 MILES, TURN RIGHT AND GO EAST 0.3 MILES AND LOCATION IS ON THE LEFT (NORTH) 190 FT.

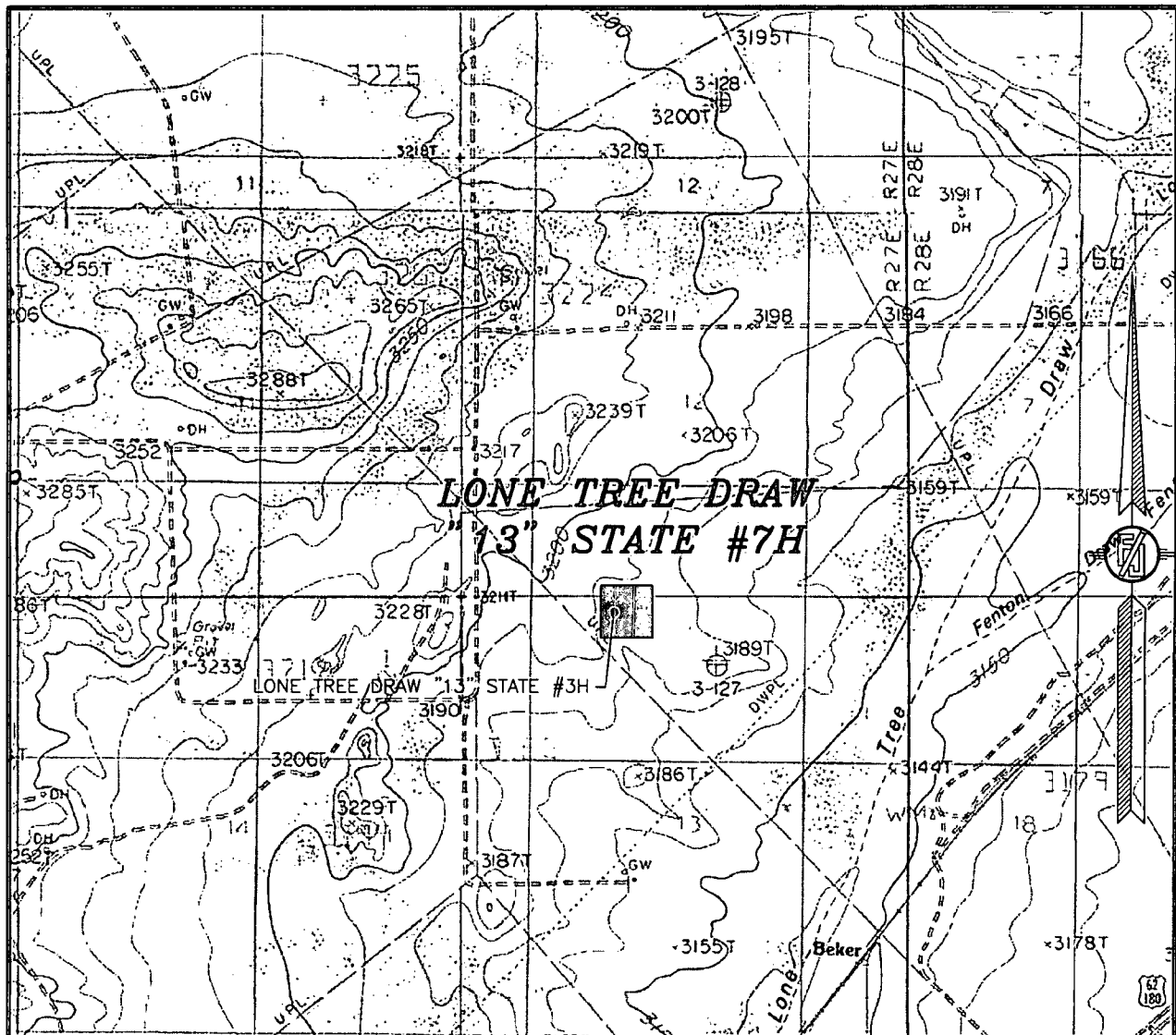
DEVON ENERGY PRODUCTION COMPANY, L.P.
LONE TREE DRAW "13" STATE #7H
 LOCATED 150 FT. FROM THE NORTH LINE
 AND 1980 FT. FROM THE WEST LINE OF
 SECTION 13, TOWNSHIP 21 SOUTH,
 RANGE 27 EAST, N.M.P.M.
 EDDY COUNTY, STATE OF NEW MEXICO

MAY 9, 2013

SURVEY NO. 1852

MADRON SURVEYING, INC. 301 SOUTH CANAL (575) 234-3341 CARLSBAD, NEW MEXICO

SECTION 13, TOWNSHIP 21 SOUTH, RANGE 27 EAST, N.M.P.M.
 EDDY COUNTY, STATE OF NEW MEXICO
 LOCATION VERIFICATION MAP



USGS QUAD MAP:
 CARLSBAD EAST

NOT TO SCALE

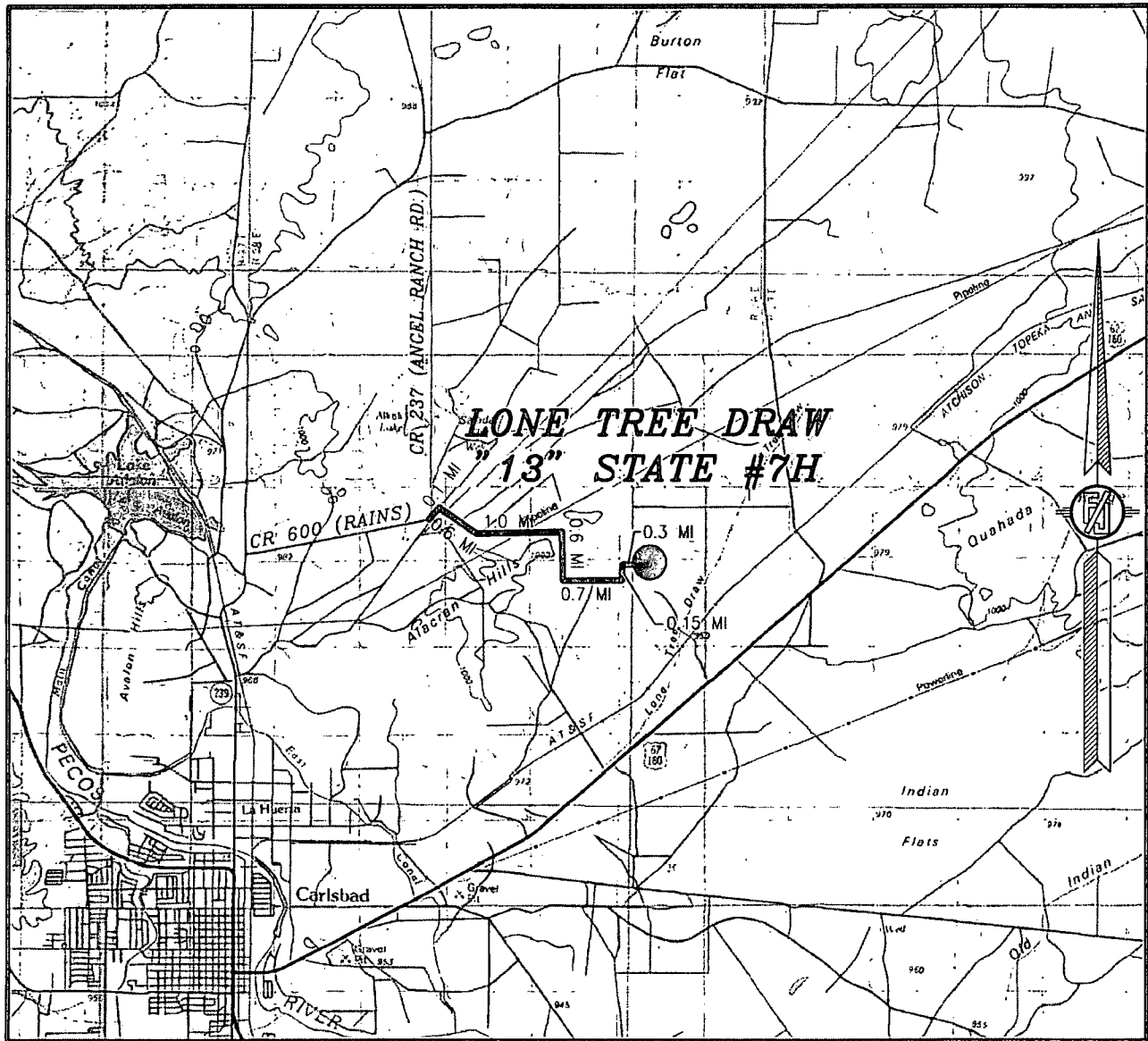
DEVON ENERGY PRODUCTION COMPANY, L.P.
LONE TREE DRAW "13" STATE #7H
 LOCATED 150 FT. FROM THE NORTH LINE
 AND 1980 FT. FROM THE WEST LINE OF
 SECTION 13, TOWNSHIP 21 SOUTH,
 RANGE 27 EAST, N.M.P.M.
 EDDY COUNTY, STATE OF NEW MEXICO

MAY 9, 2013

MADRON SURVEYING, INC. 301 SOUTH CANAL (575) 234-3341 CARLSBAD, NEW MEXICO

SURVEY NO. 1852

SECTION 13, TOWNSHIP 21 SOUTH, RANGE 27 EAST, N.M.P.M.
EDDY COUNTY, STATE OF NEW MEXICO
VICINITY MAP



NOT TO SCALE

DEVON ENERGY PRODUCTION COMPANY, L.P.

LONE TREE DRAW "13" STATE #7H

LOCATED 150 FT. FROM THE NORTH LINE
AND 1980 FT. FROM THE WEST LINE OF
SECTION 13, TOWNSHIP 21 SOUTH,
RANGE 27 EAST, N.M.P.M.

EDDY COUNTY, STATE OF NEW MEXICO

MAY 9, 2013

DIRECTIONS TO LOCATION

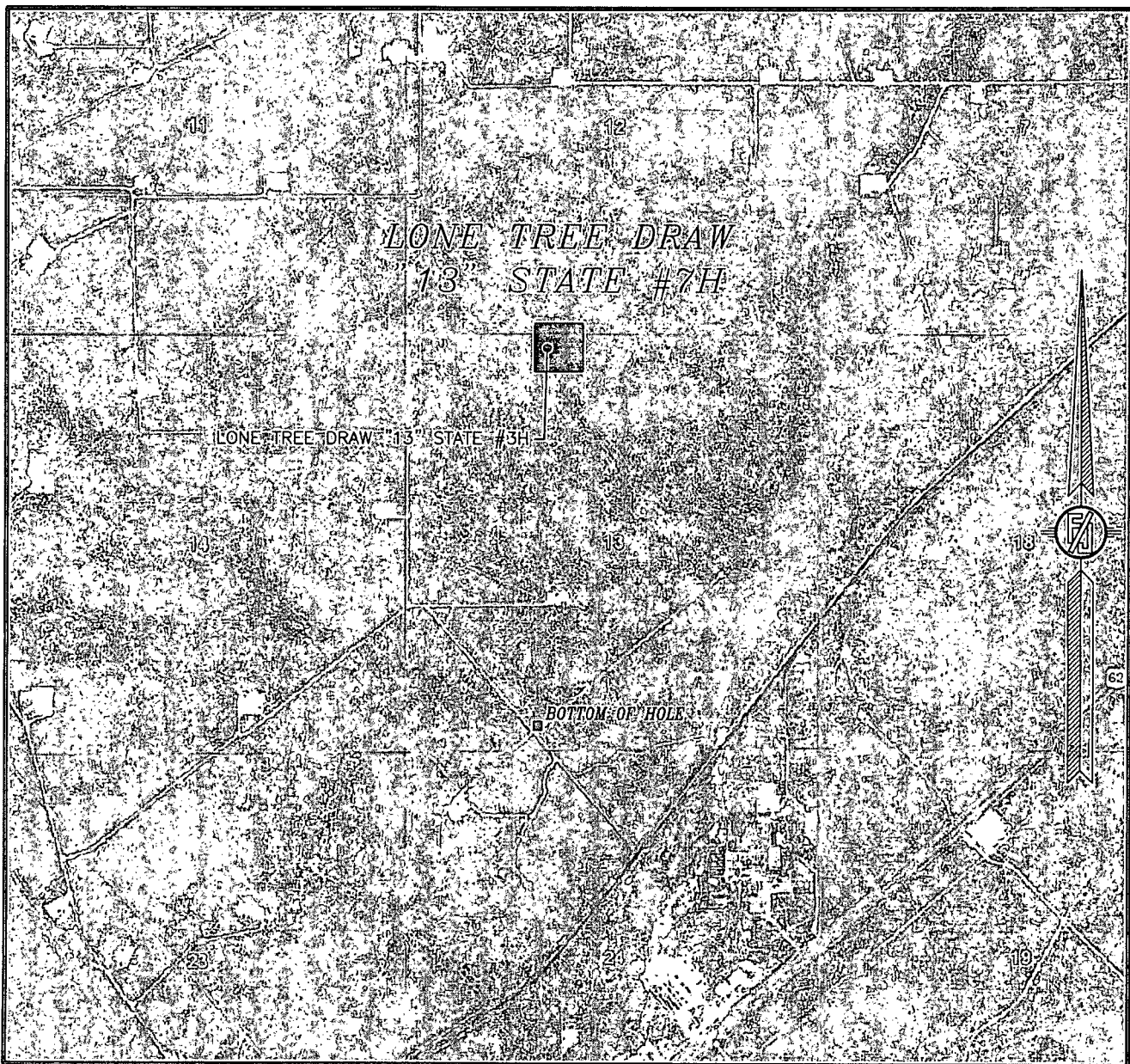
FROM CR 600 (RAINS) AND CR 237 (ANGEL RANCH ROAD) AND CALICHE LEASE ROAD GO NORTHWEST ON CALICHE LEASE ROAD 0.1 MILE, TURN RIGHT AND GO SOUTHEAST 0.6 MILES, BEND LEFT AND GO EAST 1.0 MILES, TURN RIGHT AND GO SOUTH 0.6 MILES, TURN LEFT AND GO EAST 0.7 MILES, TURN LEFT AND GO NORTH 0.15 MILES, TURN RIGHT AND GO EAST 0.3 MILES AND LOCATION IS ON THE LEFT (NORTH) 190 FT.

SURVEY NO. 1852

MADRON SURVEYING, INC. 301 SOUTH CANAL (575) 234-3341

CARLSBAD, NEW MEXICO

SECTION 13, TOWNSHIP 21 SOUTH, RANGE 27 EAST, N.M.P.M.
EDDY COUNTY, STATE OF NEW MEXICO
AERIAL PHOTO



NOT TO SCALE
AERIAL PHOTO:
GOOGLE EARTH
JUNE 2011

DEVON ENERGY PRODUCTION COMPANY, L.P.
LONE TREE DRAW "13" STATE #7H
LOCATED 150 FT. FROM THE NORTH LINE
AND 1980 FT. FROM THE WEST LINE OF
SECTION 13, TOWNSHIP 21 SOUTH,
RANGE 27 EAST, N.M.P.M.
EDDY COUNTY, STATE OF NEW MEXICO

MAY 9, 2013

SURVEY NO. 1852

MADRON SURVEYING, INC. 301 SOUTH CANAL (575) 234-3341 CARLSBAD, NEW MEXICO