

**DISTRICT IV**  
1220 S. St. Francis Dr., Santa Fe, NM 87506

**OIL CONSERVATION DIVISION**  
1220 South St. Francis Dr. SEP 25 2013  
Santa Fe, New Mexico 87505

Submit one copy to appropriate District Office

Department **RECEIVED** Subm  
DIVISION  
Dr. SEP 25 2013  
7505  
NMOCD ARTESIA

☐ AMENDED REPORT

|               |                           |               |
|---------------|---------------------------|---------------|
| API Number    | Pool Code                 | Pool Name     |
| 30-05-40935   | 96101                     | SWD; Devonian |
| Property Code | Property Name             | Well Number   |
| 39611         | PLU DELAWARE B 23 FEDERAL | 1 SWD         |
| OGRID No.     | Operator Name             | Elevation     |
| 260737        | BOPCO, L.P.               | 3435          |

### Surface Location

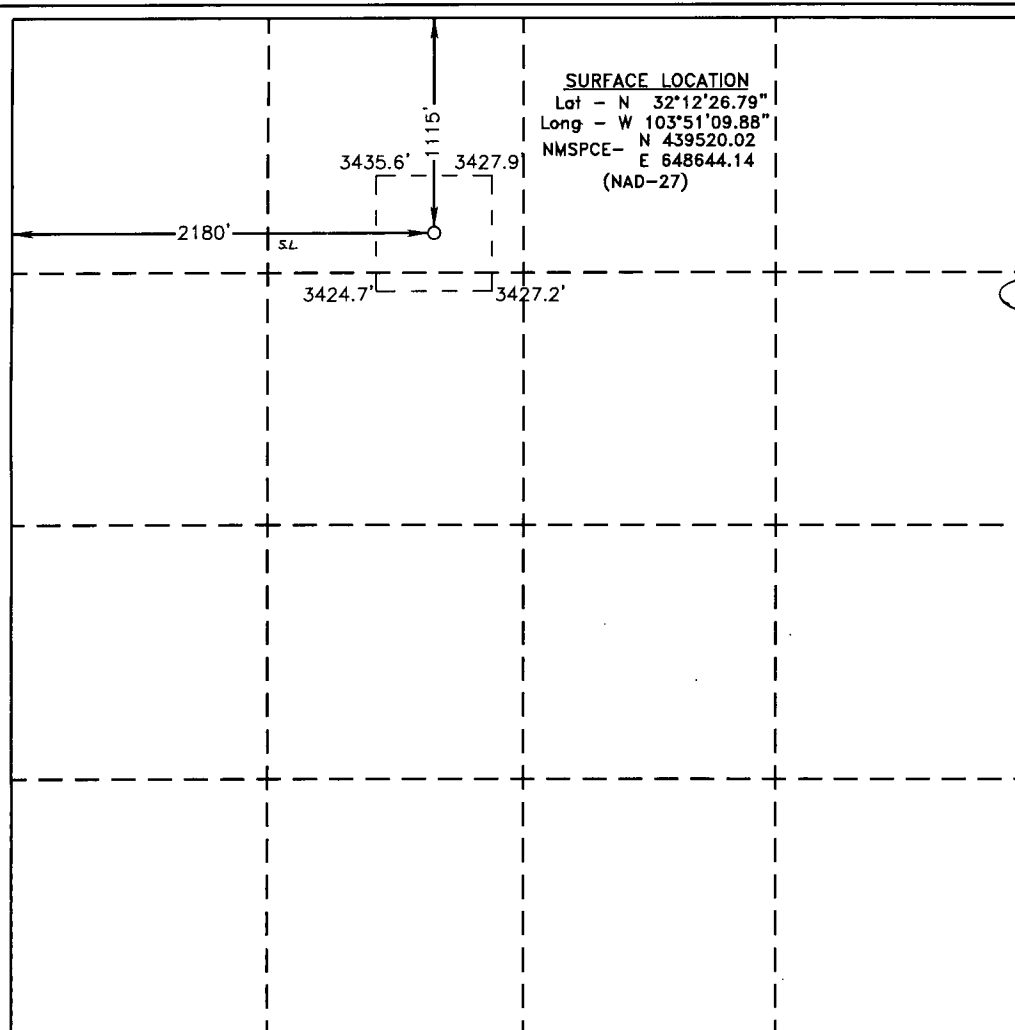
| UL or lot No. | Section | Township | Range | Lot Idn | Feet from the | North/South line | Feet from the | East/West line | County |
|---------------|---------|----------|-------|---------|---------------|------------------|---------------|----------------|--------|
| C             | 23      | 24 S     | 30 E  |         | 1115          | NORTH            | 2180          | WEST           | EDDY   |

## Bottom Hole Location If Different From Surface

| UL or lot No. | Section | Township | Range | Lot Idn | Feet from the | North/South line | Feet from the | East/West line | County |
|---------------|---------|----------|-------|---------|---------------|------------------|---------------|----------------|--------|
|---------------|---------|----------|-------|---------|---------------|------------------|---------------|----------------|--------|

|                 |                 |                    |           |
|-----------------|-----------------|--------------------|-----------|
| Dedicated Acres | Joint or Infill | Consolidation Code | Order No. |
| 0               |                 |                    |           |

NO ALLOWABLE WILL BE ASSIGNED TO THIS COMPLETION UNTIL ALL INTERESTS HAVE BEEN CONSOLIDATED  
OR A NON-STANDARD UNIT HAS BEEN APPROVED BY THE DIVISION



## OPERATOR CERTIFICATION

I hereby certify that the information contained herein is true and complete to the best of my knowledge and belief, and that this organization either owns a working interest or unleased mineral interest in the land including the proposed bottom hole location or has a right to drill this well at this location pursuant to a contract with an owner of such a mineral or working interest, or to a voluntary pooling agreement or a compulsory pooling order heretofore entered by the division.

Signature Michael Dwyer Date 09-25-13

Tracie J Cherry  
Printed Name  
tjcherry@basspet.com  
Email Address

### SURVEYOR CERTIFICATION

I hereby certify that the well location shown on this plat was plotted from field notes of actual surveys made by me or under my supervision and that the same is true and correct to the best of my belief.

Date Surveyed \_\_\_\_\_  
Signature & Seal of  
Professional Surveyor \_\_\_\_\_

Certificate No. Gary L. Jones 7977

BASIN SURVEYS 26947