

DISTRICT I
1825 N. French Dr., Hobbs, NM 88240

DISTRICT II
1301 W. Grand Avenue, Artesia, NM 88210

DISTRICT III
1000 Rio Brazos Rd., Aztec, NM 87410

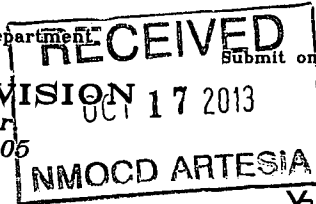
DISTRICT IV
1220 S. St. Francis Dr., Santa Fe, NM 87505

State of New Mexico
Energy, Minerals and Natural Resources Department

Form C-102

Revised July 16, 2010

OIL CONSERVATION DIVISION
1220 South St. Francis Dr.
Santa Fe, New Mexico 87505



Submit one copy to appropriate
District Office

WELL LOCATION AND ACREAGE DEDICATION PLAT

☒ AMENDED REPORT
"As Drilled"

API Number 30-015-41246	Pool Code 47545	Pool Name Nash Draw; Delaware/Bone Spring (Av. Sand)
Property Code 306402	Property Name POKER LAKE UNIT	Well Number 428H
OGRID No. 260737	Operator Name BOPCO, L.P.	Elevation 3336'

Surface Location

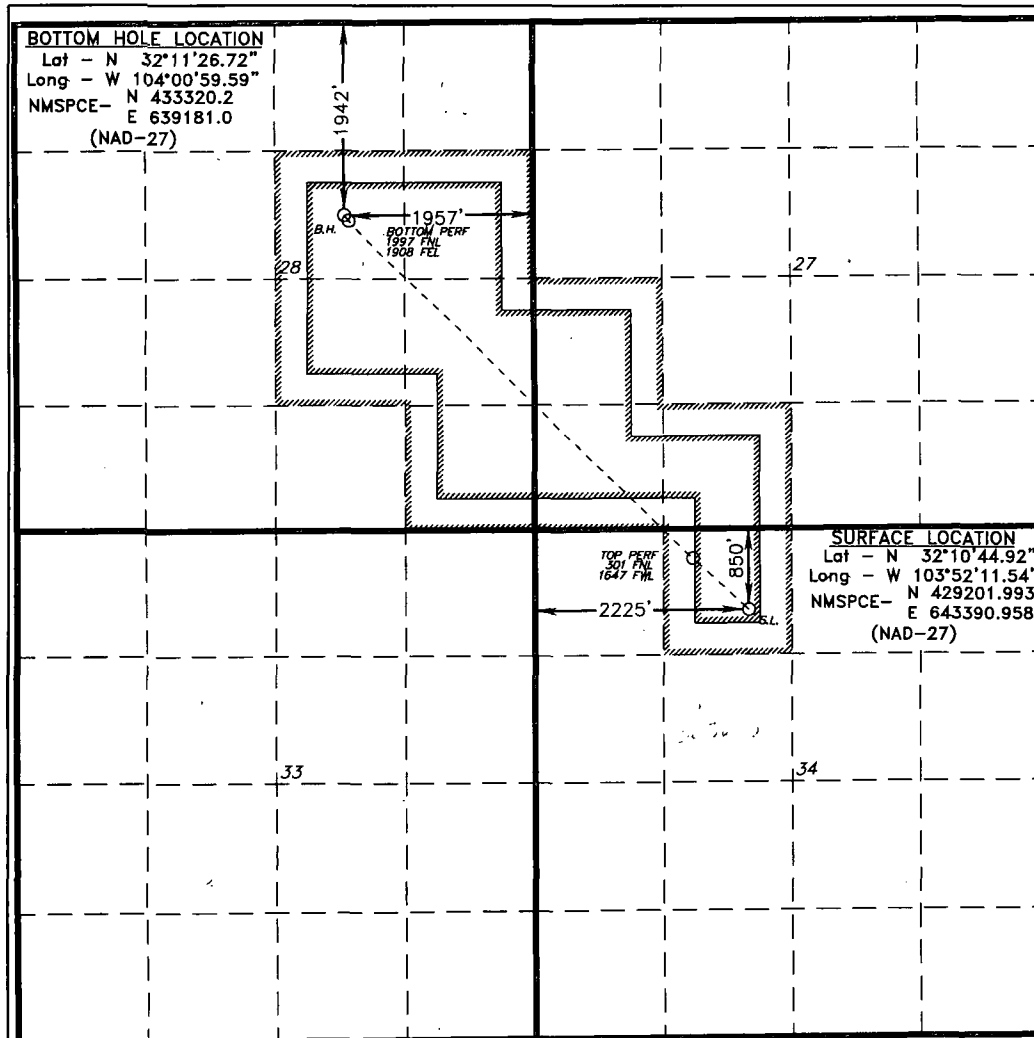
UL or lot No. C	Section 34	Township 24 S	Range 30 E	Lot Idn	Feet from the 850	North/South line NORTH	Feet from the 2225	East/West line WEST	County EDDY
--------------------	---------------	------------------	---------------	---------	----------------------	---------------------------	-----------------------	------------------------	----------------

Bottom Hole Location If Different From Surface

UL or lot No. G	Section 28	Township 24 S	Range 30 E	Lot Idn	Feet from the 1942	North/South line NORTH	Feet from the 1957	East/West line EAST	County EDDY
--------------------	---------------	------------------	---------------	---------	-----------------------	---------------------------	-----------------------	------------------------	----------------

Dedicated Acres 360	Joint or Infill	Consolidation Code	Order No.
------------------------	-----------------	--------------------	-----------

NO ALLOWABLE WILL BE ASSIGNED TO THIS COMPLETION UNTIL ALL INTERESTS HAVE BEEN CONSOLIDATED
OR A NON-STANDARD UNIT HAS BEEN APPROVED BY THE DIVISION



OPERATOR CERTIFICATION

I hereby certify that the information contained herein is true and complete to the best of my knowledge and belief, and that this organization either owns a working interest or unleased mineral interest in the land including the proposed bottom hole location or has a right to drill this well at this location pursuant to a contract with an owner of such a mineral or working interest, or to a voluntary pooling agreement or a compulsory pooling order heretofore entered by the division.

Tracie J Cherry 10-16-13
Signature Date

Tracie J Cherry

Printed Name
tjcherry@basspet.com

Email Address

SURVEYOR CERTIFICATION

I hereby certify that the well location shown on this plat was plotted from field notes of actual surveys made by me or under my supervision, and that the same is true and correct to the best of my belief.

JANUARY 12 2013
Date Surveyed
Signature & Seal of Professional Surveyor
Certificate No. 7977
BASIN SURVEYS 27921