

District I
1635 N. French Dr., Hobbs, NM 88240
Phone: (575) 393-6161 Fax: (575) 393-0720
District II
811 S. First St., Artesia, NM 88210
Phone: (575) 748-1283 Fax: (575) 748-9720
District III
1000 Rio Brazos Road, Aztec, NM 87410
Phone: (505) 334-6178 Fax: (505) 334-6170
District IV
1220 S. St. Francis Dr., Santa Fe, NM 87505
Phone: (505) 476-3460 Fax: (505) 476-3462

State of New Mexico

Form C-101
Revised July 18, 2013

Energy Minerals and Natural Resources

Oil Conservation Division

☐ AMENDED REPORT

1220 South St. Francis Dr.

Santa Fe, NM 87505

APPLICATION FOR PERMIT TO DRILL, RE-ENTER, DEEPEN, PLUGBACK, OR ADD A ZONE

1. Operator Name and Address CHEVRON U.S.A. INC. 15 SMITH ROAD MIDLAND, TEXAS 79705		2. OGRID Number 4323
3. Property Code 40179		4. Property Name SKEEN 2 SWD
5. Well No. 30-05-41144		6. Well No. 1

7. Surface Location

UL - Lot M	Section 2	Township 26S	Range 27E	Lot Idn	Feet from 400	N/S Line SOUTH	Feet From 1200	E/W Line WEST	County EDDY
---------------	--------------	-----------------	--------------	---------	------------------	-------------------	-------------------	------------------	----------------

* Proposed Bottom Hole Location

UL - Lot	Section	Township	Range	Lot Idn	Feet from	N/S Line	Feet From	E/W Line	County
----------	---------	----------	-------	---------	-----------	----------	-----------	----------	--------

9. Pool Information

Pool Name SWD, BRUSHY CANYON	Pool Code 97802
---------------------------------	--------------------

Additional Well Information

11. Work Type NEW WELL	12. Well Type SWD	13. Cable/Rotary	14. Lease Type P	15. Ground Level Elevation 3218' GR
16. Multiple NO	17. Proposed Depth 5600'	18. Formation BRUSHY CANYON	19. Contractor	20. Spud Date
Depth to Ground water		Distance from nearest fresh water well		Distance to nearest surface water

☒ We will be using a closed-loop system in lieu of lined pits

21. Proposed Casing and Cement Program

Type	Hole Size	Casing Size	Casing Weight/ft	Setting Depth	Sacks of Cement	Estimated TOC
SURF	12 1/4"	9 5/8"	40#	1500'	645	
PROD	8 3/4"	7"	26#	5600'	545	

Casing/Cement Program: Additional Comments

C-108 FOR SWD IS BEING PREPARED TO SEND TO SANTA FE

22. Proposed Blowout Prevention Program

Type	Working Pressure	Test Pressure	Manufacturer
DBL RAM & SINGLE RAM	5000	5000	CAMERON TYPE U

23. I hereby certify that the information given above is true and complete to the best of my knowledge and belief.
I further certify that I have complied with 19.15.14.9 (A) NMAC ☒ and/or 19.15.14.9 (B) NMAC ☐, if applicable.
Signature: Denise Pinkerton

Printed name: DENISE PINKERTON

Title: REGULATORY SPECIALIST

E-mail Address: leakejd@chevron.com

Date: 10/16/2013

Phone: 432-687-7375

OIL CONSERVATION DIVISION

Approved By:

T. C. Shepard

Title:

"Geologist"

Approved Date:

10/17/2013

Expiration Date:

10/17/2015

Conditions of Approval Attached

Cannot inject until C108 approval is in place

District I
1625 N. French Dr., Hobbs, NM 88240
Phone: (575) 393-6161 Fax: (575) 393-0720
District II
611 S. First St., Artesia, NM 88210
Phone: (575) 748-1253 Fax: (575) 748-9720
District III
1000 Rio Brazos Road, Aztec, NM 87410
Phone: (505) 334-6178 Fax: (505) 334-6170
District IV
1220 S. St. Francis Dr., Santa Fe, NM 87505
Phone: (505) 476-3460 Fax: (505) 476-3462

State of New Mexico
Energy, Minerals & Natural Resources Department
OIL CONSERVATION DIVISION
1220 South St. Francis Dr.
Santa Fe, NM 87505

Form C-102
Revised August 1, 2011
Submit one copy to appropriate
District Office

☐ AMENDED REPORT

WELL LOCATION AND ACREAGE DEDICATION PLAT

¹ API Number 30-015-41744	² Pool Code 97802	³ Pool Name SWD; BRUSHY CANYON
⁴ Property Code 40179	⁵ Property Name SKEEN 2 SWD	⁶ Well Number 1
⁷ OGRID No. 4323	⁸ Operator Name CHEVRON U.S.A., INC.	⁹ Elevation 3218'

¹⁰ Surface Location

UL or lot no.	Section	Township	Range	Lot (dn)	Feet from the	North/South line	Feet from the	East/West line	County
M	2	26 SOUTH	27 EAST, N.M.P.M.		400'	SOUTH	1200'	WEST	EDDY

¹¹ Bottom Hole Location If Different From Surface

UL or lot no.	Section	Township	Range	Lot (dn)	Feet from the	North/South line	Feet from the	East/West line	County
M	2	26 SOUTH	27 EAST, N.M.P.M.		400'	SOUTH	1200'	WEST	EDDY

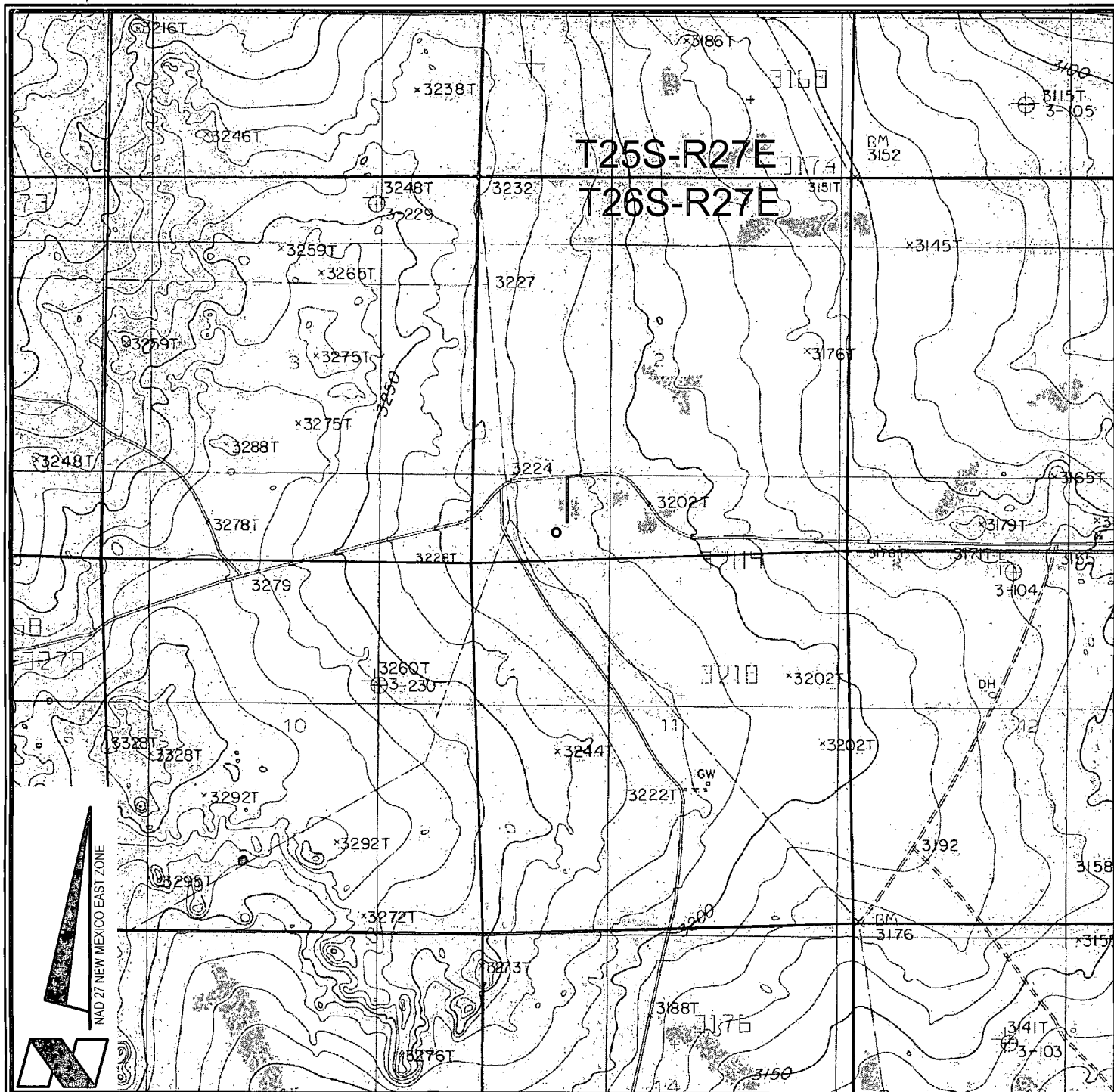
¹² Dedicated Acres	¹³ Joint or Infill	¹⁴ Consolidation Code	¹⁵ Order No.
-------------------------------	-------------------------------	----------------------------------	-------------------------

No allowable will be assigned to this completion until all interests have been consolidated or a non-standard unit has been approved by the division.

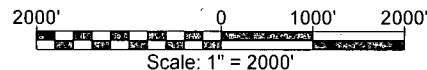
	<p>¹⁷ OPERATOR CERTIFICATION</p> <p>I hereby certify that the information contained herein is true and complete to the best of my knowledge and belief, and that this organization either owns a working interest or unleased mineral interest in the land including the proposed bottom hole location or has a right to drill this well at this location pursuant to a contract with an owner of such a mineral or working interest, or to a voluntary pooling agreement or a compulsory pooling order heretofore entered by the division.</p> <p><i>Denise Pinkerton</i> 10/15/2013 Signature Date</p> <p>Denise Pinkerton Printed Name</p> <p>leakjd@chevron.com E-mail Address</p>
	<p>¹⁸ SURVEYOR CERTIFICATION</p> <p>I hereby certify that the well location shown on this plat was plotted from field notes of actual surveys made by me or under my supervision, and that the same is true and correct to the best of my belief.</p> <p><i>July 26 2013</i> Date of Survey</p> <p><i>[Signature]</i> Signature and Seal of Professional Surveyor</p> <p>Wm. J. Daniel III NEW MEXICO REGISTERED PROFESSIONAL SURVEYOR 15078</p> <p>#15078</p>

Skeen 2 SWD #1

API# 30-015-41744



VICINITY MAP



CHEVRON U.S.A. INC.

SKEEN 2 SWD NO. 1 WELL
LOCATED 400' FSL AND 1200' FWL
SECTION 2, T26S-R27E
EDDY COUNTY, NEW MEXICO



Lafayette New Orleans Houston
135 Regency Sq. Lafayette, LA 70508
Ph. 337-237-2200 Fax. 337-232-3299
www.fenstermaker.com

DRAWN BY: BMO

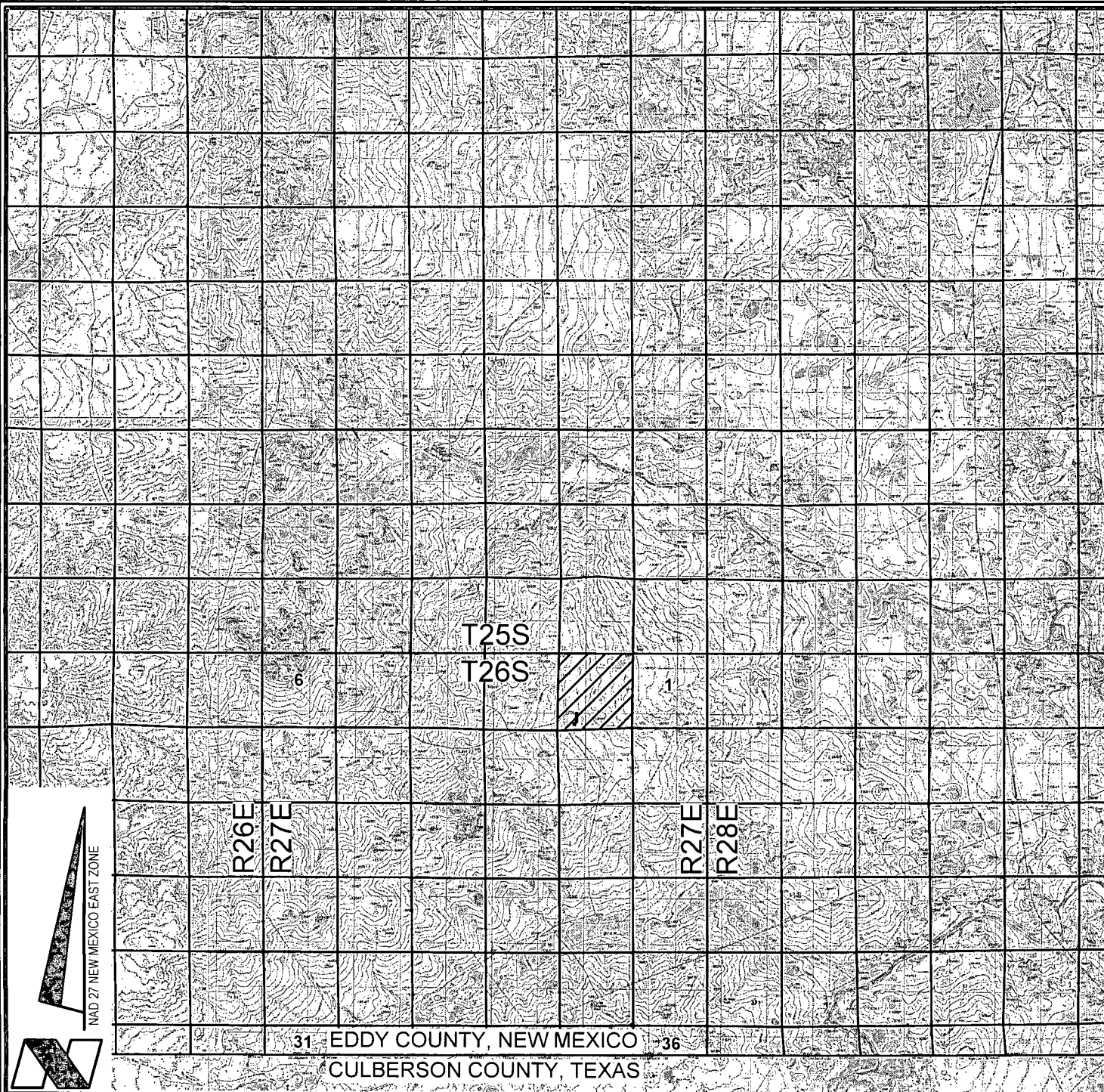
REVISED:

DATE: JULY 23, 2013

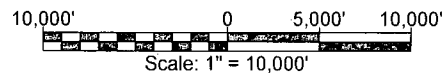
PROJ. MGR.: GDG

SHEET 1 OF 3 SHEETS

FILENAME: T:\2013\2131310\DWG\SKEEN 2 SWD No. 1 APD.dwg



VICINITY MAP



CHEVRON U.S.A. INC.

SKEEN 2 SWD NO. 1 WELL
 LOCATED 400' FSL AND 1200' FWL
 SECTION 2, T26S-R27E
 EDDY COUNTY, NEW MEXICO



Lafayette New Orleans Houston
 135 Regency Sq. Lafayette, LA 70508
 Ph. 337-237-2200 Fax. 337-232-3299
www.fenstermaker.com

DRAWN BY: BMO

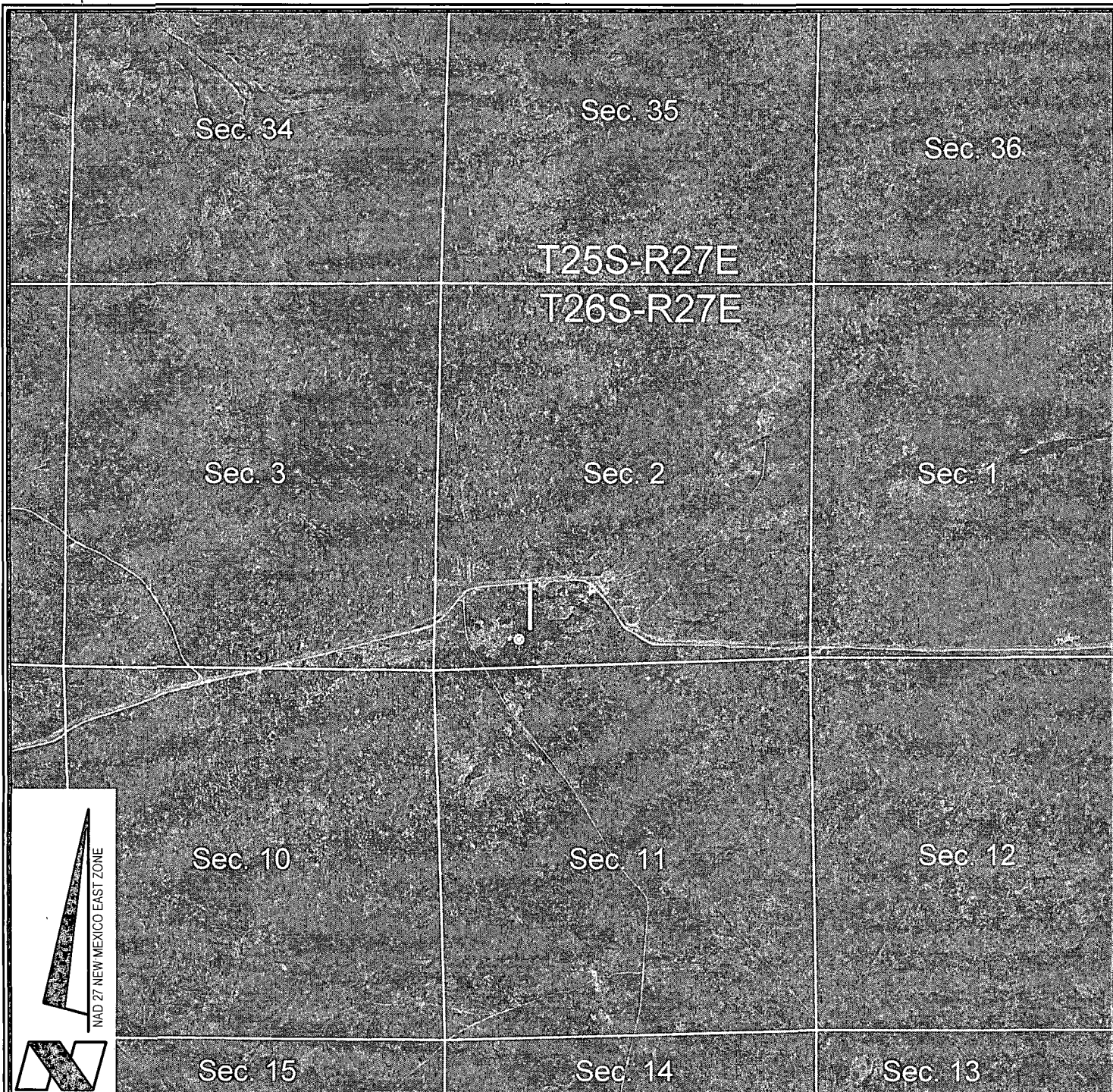
REVISED:

DATE: JULY 23, 2013

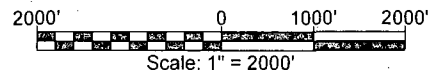
PROJ. MGR.: GDG




SHEET 2 OF 3 SHEETS

FILENAME: T:\2013\2131310\DWG\SKEEN 2 SWD No. 1 APD.dwg



VICINITY MAP



-  = FEDERAL LAND
-  = FEE LAND
-  = STATE LAND

CHEVRON U.S.A. INC.
 SKEEN 2 SWD NO. 1 WELL
 LOCATED 400' FSL AND 1200' FWL
 SECTION 2, T26S-R27E
 EDDY COUNTY, NEW MEXICO



Lafayette New Orleans Houston
 135 Regency Sq. Lafayette, LA 70508
 Ph. 337-237-2200 Fax. 337-232-3299
www.fenstermaker.com

DRAWN BY: BMO

PROJ. MGR.: GDG

REVISED:

DATE: JULY 23, 2013

SHEET 3 OF 3 SHEETS

FILENAME: T:\2013\2131310\DWG\SKEEN 2 SWD No.1 APD.dwg

NOTE:
PLEASE BE ADVISED, THAT WHILE REASONABLE EFFORTS ARE MADE TO LOCATE AND VERIFY PIPELINES AND ANOMALIES USING OUR STANDARD PIPELINE LOCATING EQUIPMENT, IT IS IMPOSSIBLE TO BE 100% EFFECTIVE. AS SUCH, WE ADVISE USING CAUTION WHEN PERFORMING WORK AS THERE IS A POSSIBILITY THAT PIPELINES AND OTHER HAZARDS, SUCH AS FIBER OPTIC CABLES, PVC PIPELINES, ETC. MAY EXIST UNDETECTED ON SITE.

MANY STATES MAINTAIN INFORMATION CENTERS THAT ESTABLISH LINKS BETWEEN THOSE WHO DIG (EXCAVATORS) AND THOSE WHO OWN AND OPERATE UNDERGROUND FACILITIES (OPERATORS). IT IS ADVISABLE AND IN MOST STATES, LAW, FOR THE CONTRACTOR TO CONTACT THE CENTER FOR ASSISTANCE IN LOCATING AND MARKING UNDERGROUND UTILITIES. NEW MEXICO ONE CALL, <http://www.nmonecall.org/>.

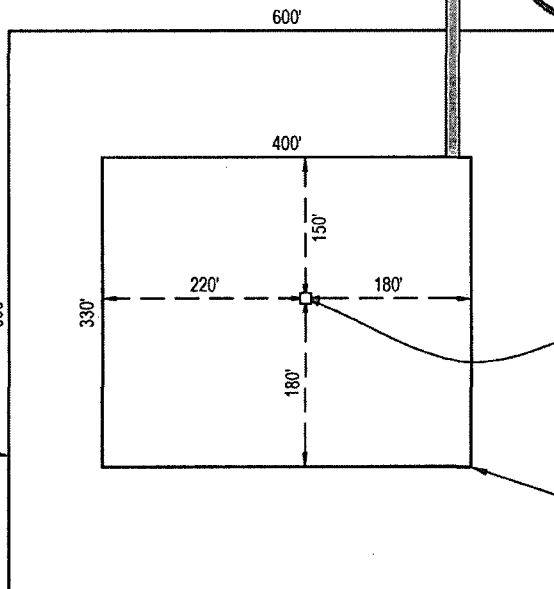
DISCLAIMER: AT THIS TIME, FENSTERMAKER & ASSOCIATES, LLC HAS NOT PERFORMED NOR WAS ASKED TO PERFORM ANY TYPE OF ENGINEERING, HYDROLOGICAL MODELING, FLOOD PLAIN, OR 'NO RISE' CERTIFICATION ANALYSES, INCLUDING BUT NOT LIMITED TO DETERMINING WHETHER THE PROJECT WILL IMPACT FLOOD HAZARDS IN CONNECTION WITH FEDERAL/FEMA, STATE, AND/OR LOCAL LAWS, ORDINANCES AND REGULATIONS. ACCORDINGLY, FENSTERMAKER MAKES NO WARRANTY OR REPRESENTATION OF ANY KIND AS TO THE FOREGOING ISSUES, AND PERSONS OR ENTITIES USING THIS INFORMATION SHALL DO SO AT THEIR OWN RISK.

LEGEND	
	Proposed Well
	Section Line
	Existing Road

**PROPOSED
ARCHAEOLOGICAL
AREA**
±5.23 Acres

R 27 E
Existing 16'
Gravel Road
**PROPOSED
ACCESS ROAD**
14' X ±654'
±0.21 Acres
±39.64 Rods

Sec. 2
State of New Mexico



FOR THE EXCLUSIVE USE OF
CHEVRON U.S.A. INC.
I, WM. J. Daniel III, Registered Professional
Land Surveyor, do hereby state this plat is true
and correct to the best of my knowledge.



WM. J. Daniel III
Registration No. 15078

**T
26
S**

Skeen 2 SWD
No. 1 Well
FSL=400'
FWL=1200'

PROPOSED PAD
±3.03 Acres

NAD 27 NEW MEXICO EAST ZONE



SKEEN 2 SWD NO. 1 WELL	
X=	551,984 NAD 27
Y=	387,381
LAT.	32.064914
LONG.	104.165523
X=	593,168 NAD83
Y=	387,438
LAT.	32.065036
LONG.	104.166015
ELEVATION	+3218' NAVD 88

NW ARCH. AREA CRN.		NE ARCH. AREA CRN.		SE ARCH. AREA CRN.		SW ARCH. AREA CRN.	
X=	551,664 NAD 27	X=	552,264 NAD 27	X=	552,264 NAD 27	X=	551,664 NAD 27
Y=	387,666	Y=	387,666	Y=	387,066	Y=	387,066
NW PAD CRN.		NE PAD CRN.		SE PAD CRN.		SW PAD CRN.	
X=	551,764 NAD 27	X=	552,164 NAD 27	X=	552,164 NAD 27	X=	551,764 NAD 27
Y=	387,531	Y=	387,531	Y=	387,201	Y=	387,201
ELEVATION	+3219' NAVD 88	ELEVATION	+3216' NAVD 88	ELEVATION	+3217' NAVD 88	ELEVATION	+3220' NAVD 88

Sec. 11

SURFACE USE PLAT

SCALE

200' 0 100' 200'

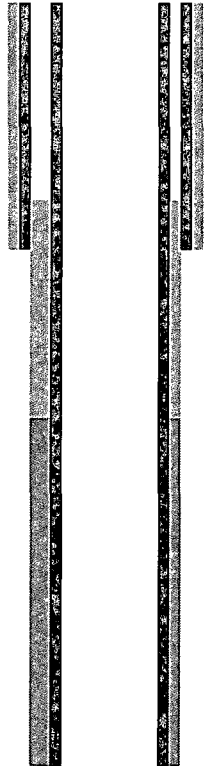
CHEVRON U.S.A. INC.
PROPOSED PAD & ACCESS ROAD
SKEEN 2 SWD NO. 1 WELL
SECTION 2, T26S-R27E
EDDY COUNTY, NEW MEXICO



135 Regency Sq. Lafayette, LA 70508
Ph. 337-237-2200 Fax. 337-232-3299
www.fenstermaker.com

DRAWN BY: BMO		REVISIONS	
PROJ. MGR.: GDG	No.	DATE:	REVISED BY:
DATE: JULY 23, 2013	No.	DATE:	REVISED BY:
FILENAME: T:\2013\2131310\DWG\SKEEN 2 SWD No.1 SUP.dwg			

Skeen 2 State SWD #1 Drilling Program "Quick-Look"



9-5/8", 40 ppf, HC K55, LTC (special drift - 8-3/4") @ +/-1,500'

7", 26 ppf, C110, CDC @ +/-5,600' TVD

General Drilling Procedure

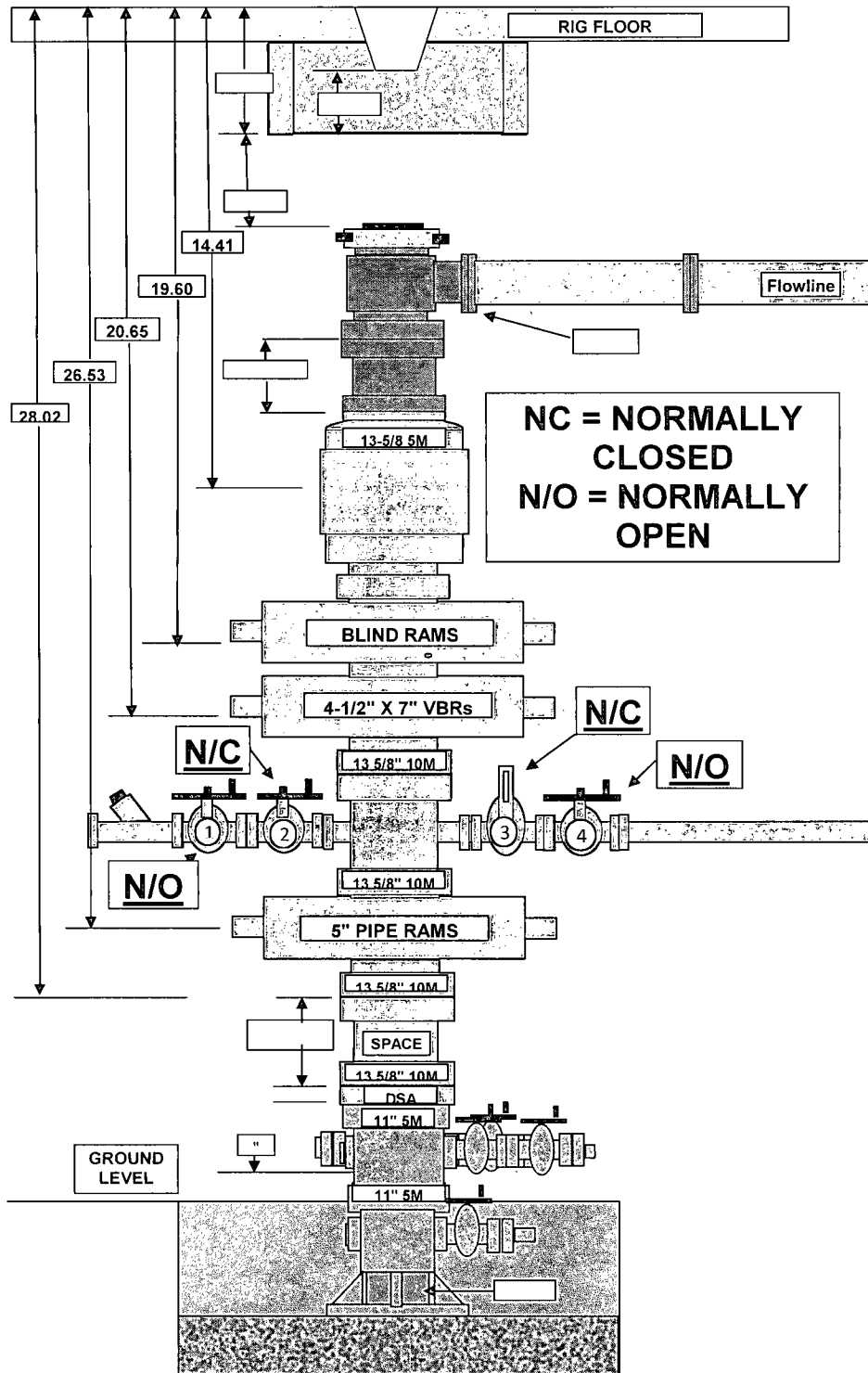
- Currently 10' cylindrical cellar installed with 80' of 20" conductor pipe set.
- MIRU
- N/U on 20" conductor and drill 12-1/24 surface hole with fresh water to 1,500'.
- Run 9-5/8" - 40# - K55 - LTC casing and cement with Class "C" lead and tail system.
- Install wellhead. N/U and test BOPE to 250 psi / 5,000 psi.
- Drill 8-3/4" production hole to 5,600' with brine past salt zone.
- POOH and run 7" - 26# - C110 - CDC casing and cement with a Class "C" lead and tail system.
- POOH and run specified logs.
- RDMO and turn well over for completion.

Delaware River: 2, 26S, 27E Eddy County, New Mexico

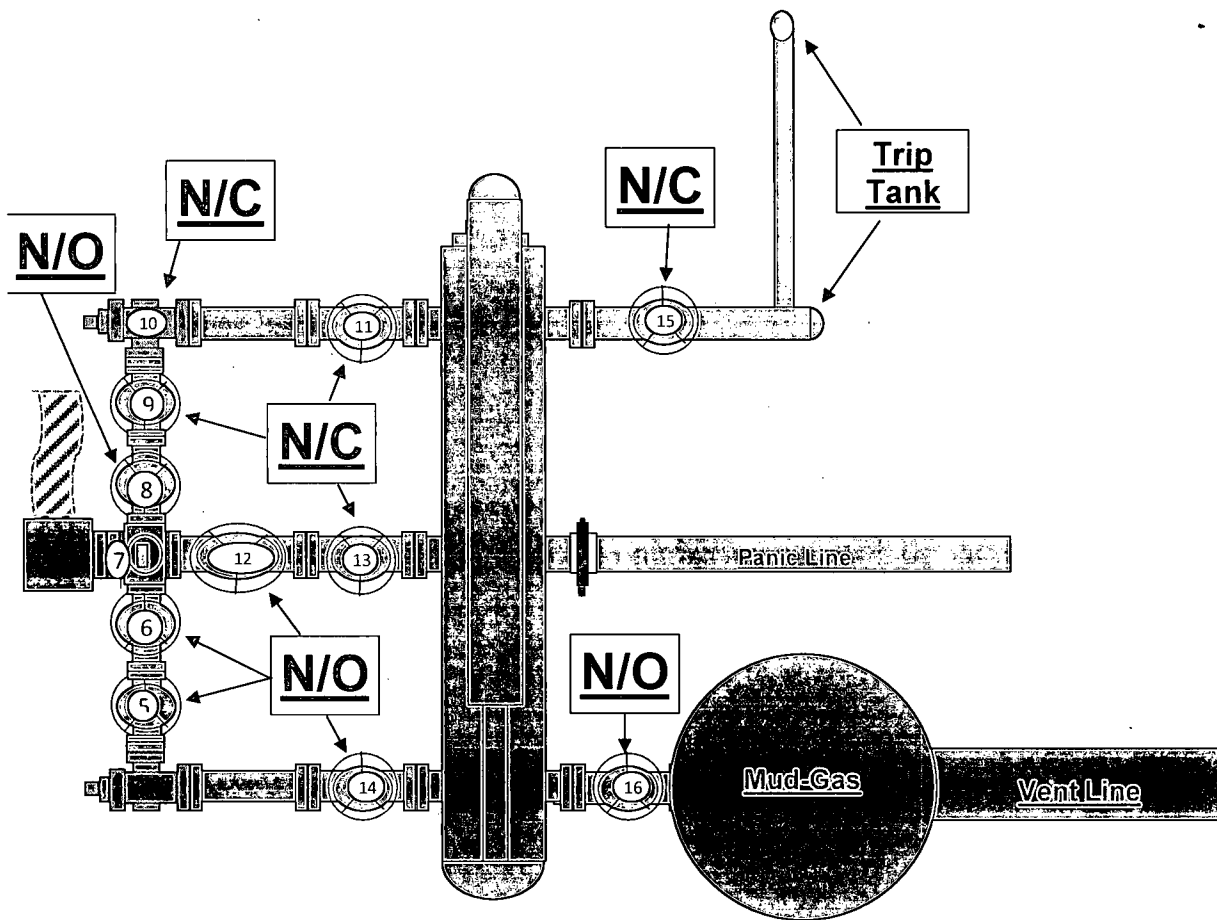
Hole Size	Mud	Bits
12-1/4"	Freshwater 8.4	PDC
8-3/4"	Brine 10.0 ppg	PDC

Formation & Geologic Feature Tops	Lithology	Depth (TVD)
Redbeds	Redbeds	0
Rustler	dol, ss, salt	791
Castile	anhydrite	857
Lamar LS	LS	2359
Bell Canyon	SS	2414
Cherry Canyon	LS	3281
Brushy Canyon	SS/LS	4312
T/Bone Spring	LS	6089
T/1st Bone Spring Sand	SS	6966
T/2nd Bone Spring Sand	SS	7617
B/2nd Bone Spring Sand		7921

Ensign 767 BOP Stack



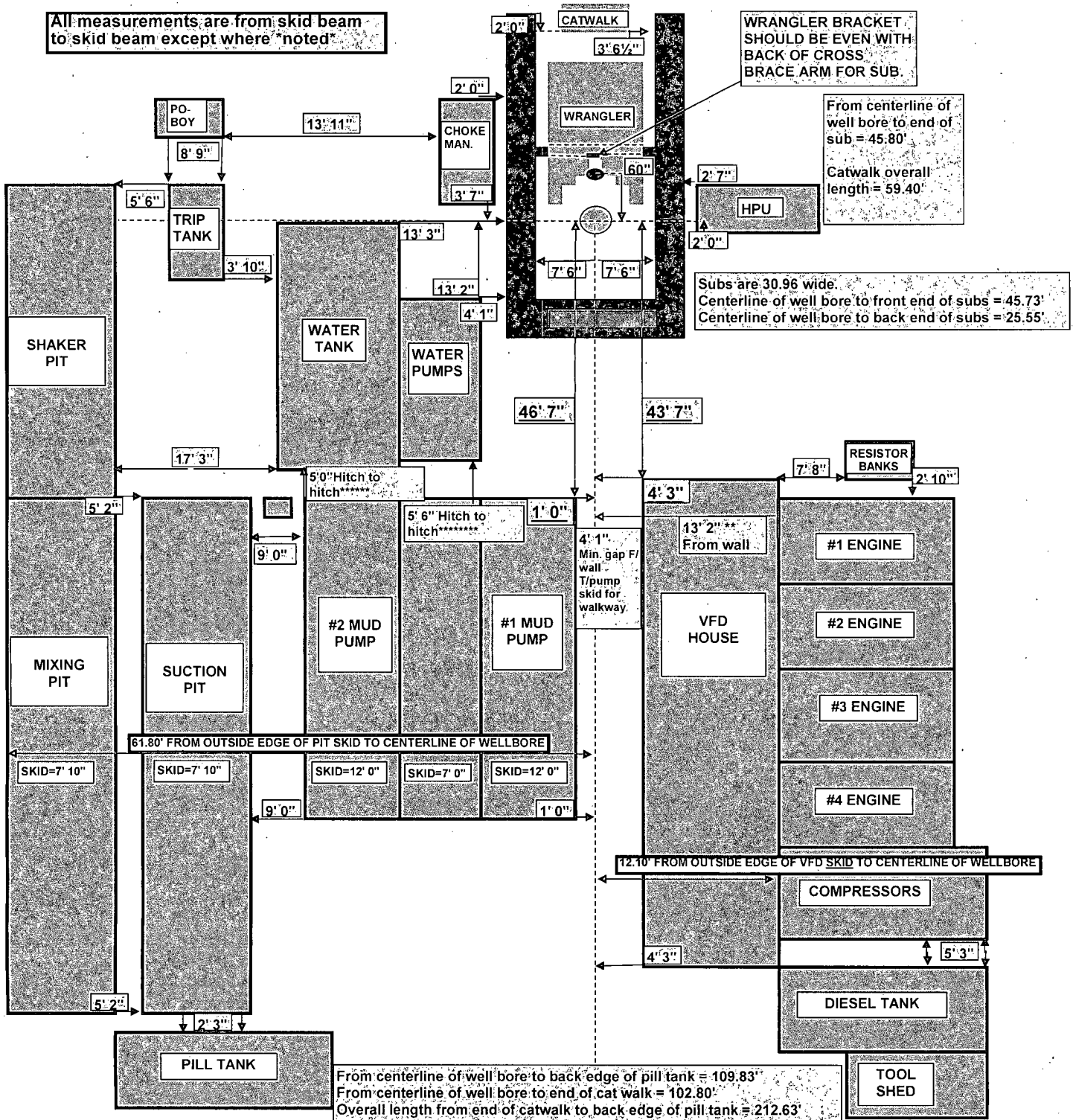
Ensign 767 Choke Manifold



N/C = NORMALLY CLOSED
N/O = NORMALLY OPEN

Ensign 767 Rig Layout

All measurements are from skid beam to skid beam except where noted



Directions to Skeen 2 State 2H

1. Starting in Pecos, take US-285 north; drive 58 miles
2. Turn left onto Whites City Rd; drive 6.1 miles
3. Turn right onto lease road (will be within a few hundred feet of county rd 775); drive 1.1 miles
4. Arrive at Skeen 2H

Permit Conditions of Approval

API: 30-015-41744

OCD Reviewer	Condition
CSHAPARD	Once the well is spud, to prevent ground water contamination through whole or partial conduits from the surface, the operator shall drill without interruption through the fresh water zone or zones and shall immediately set in cement the water protection string.