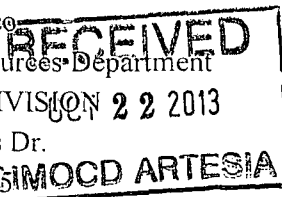


District I
1625 N. French Dr., Hobbs, NM 88240
Phone: (575) 393-6161 Fax: (575) 393-0720
District II
811 S. First St., Artesia, NM 88210
Phone: (575) 748-1283 Fax: (575) 748-9720
District III
1000 Rio Brazos Road, Aztec, NM 87410
Phone: (505) 334-6178 Fax: (505) 334-6170
District IV
1220 S. St. Francis Dr., Santa Fe, NM 87505
Phone: (505) 476-3460 Fax: (505) 476-3462

State of New Mexico
Energy, Minerals & Natural Resources Department
OIL CONSERVATION DIVISION
1220 South St. Francis Dr.
Santa Fe, NM 87505



Form C-102
Revised August 1, 2011
Submit one copy to appropriate
District Office
☐ AMENDED REPORT

WELL LOCATION AND ACREAGE DEDICATION PLAT

¹ API Number 30-015-40584	² Pool Code 65010	³ Pool Name Winchester; Bone Spring
⁴ Property Code 38500	⁵ Property Name JASPER "32" STATE	⁶ Well Number 7H
⁷ OGRID No. 6137	⁸ Operator Name DEVON ENERGY PRODUCTION COMPANY, L.P.	⁹ Elevation 3268.1

¹⁰ Surface Location

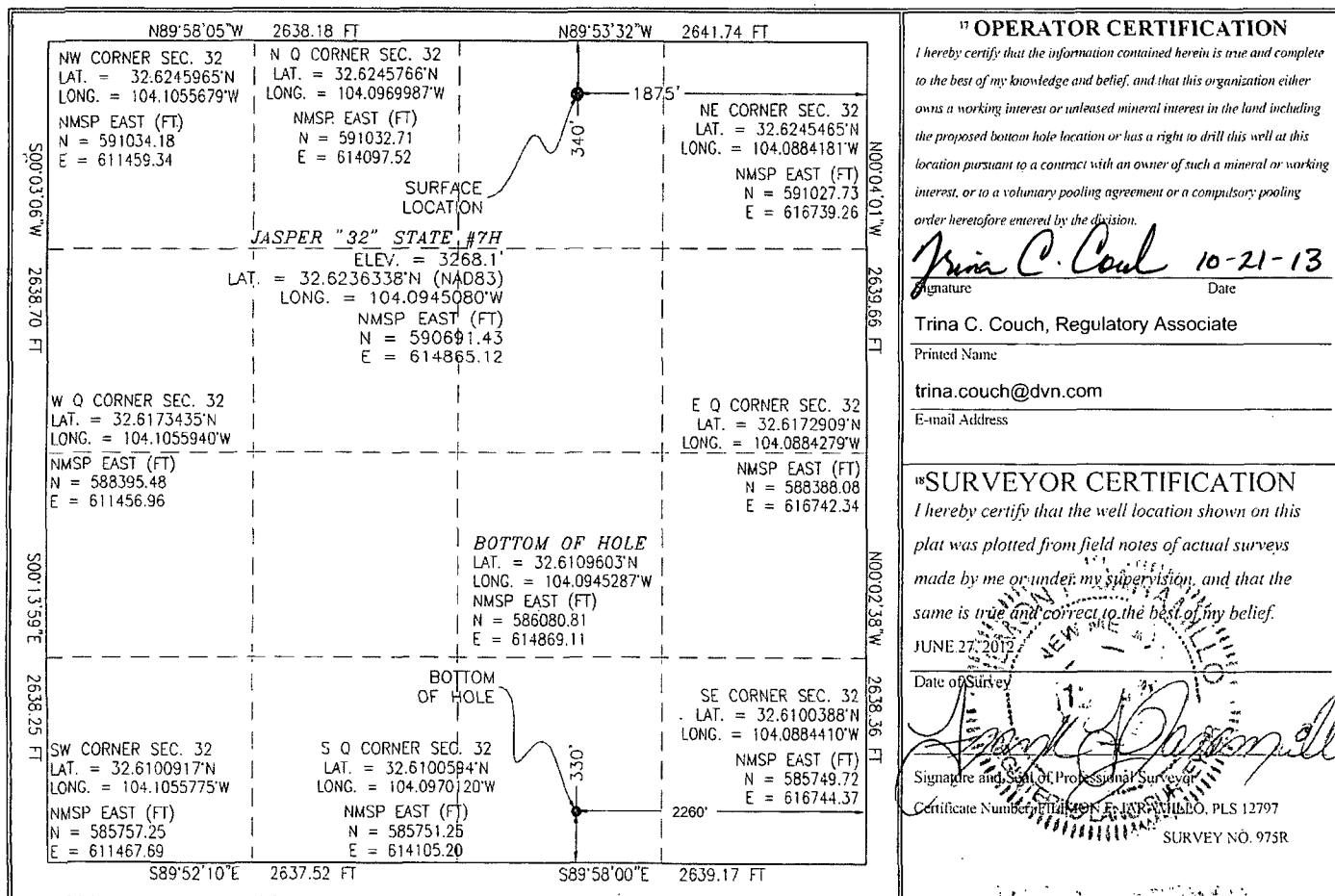
U.I. or lot no.	Section	Township	Range	Lot Idn	Feet from the	North/South line	Feet from the	East/West line	County
B	32	19 S	29 E		340	NORTH	1875	EAST	EDDY

¹¹ Bottom Hole Location If Different From Surface

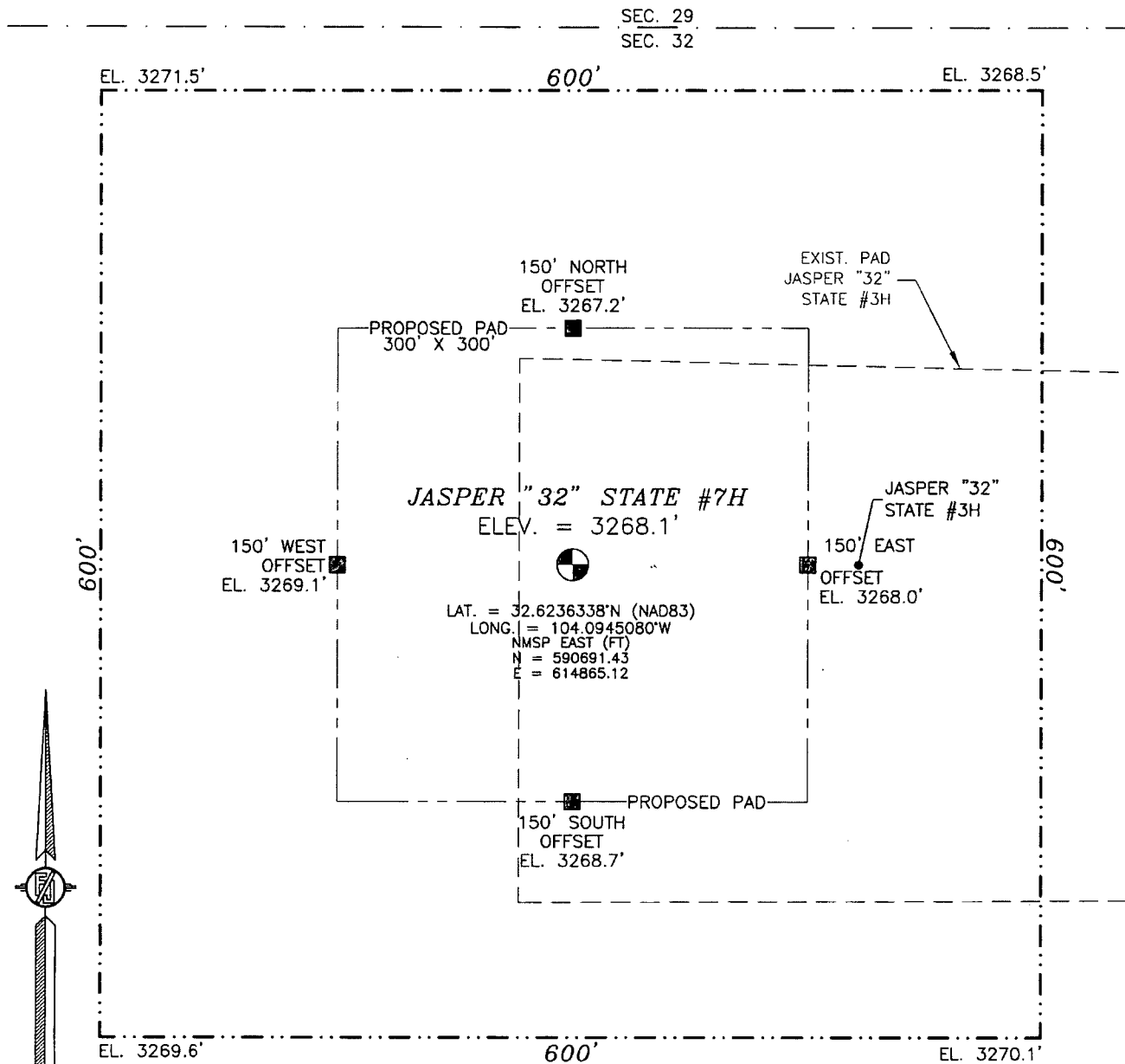
U.I. or lot no.	Section	Township	Range	Lot Idn	Feet from the	North/South line	Feet from the	East/West line	County
O	32	19 S	29 E		330	SOUTH	2260	EAST	EDDY

¹² Dedicated Acres 160	¹³ Joint or Infill	¹⁴ Consolidation Code	¹⁵ Order No.
--------------------------------------	-------------------------------	----------------------------------	-------------------------

No allowable will be assigned to this completion until all interests have been consolidated or a non-standard unit has been approved by the division.



SECTION 32, TOWNSHIP 19 SOUTH, RANGE 29 EAST, N.M.P.M.
EDDY COUNTY, STATE OF NEW MEXICO



010 50 100 200

SCALE 1" = 100'

DIRECTIONS TO LOCATION

FROM THE INTERSECTION OF CR 210 (OLD LOCO) AND CR 235 (CURRY COMB) GO NORTHWEST ON CR 235 FOR APPROX. 1.4 MILES. GO SOUTH (YELLOW CATTLE GUARD) FOR APPROX. 2.5 MILES. VEER SOUTHEAST AND GO APPROX. 0.9 OF A MILE. GO NORTH-NORTHEAST APPROX. 0.5 OF A MILE. GO NORTHWEST APPROX. 0.1 OF A MILE TO JASPER #3H. LOCATION IS APPROX. 175 FT WEST OF WELL HEAD.

DEVON ENERGY PRODUCTION COMPANY, L.P.

JASPER "32" STATE #7H

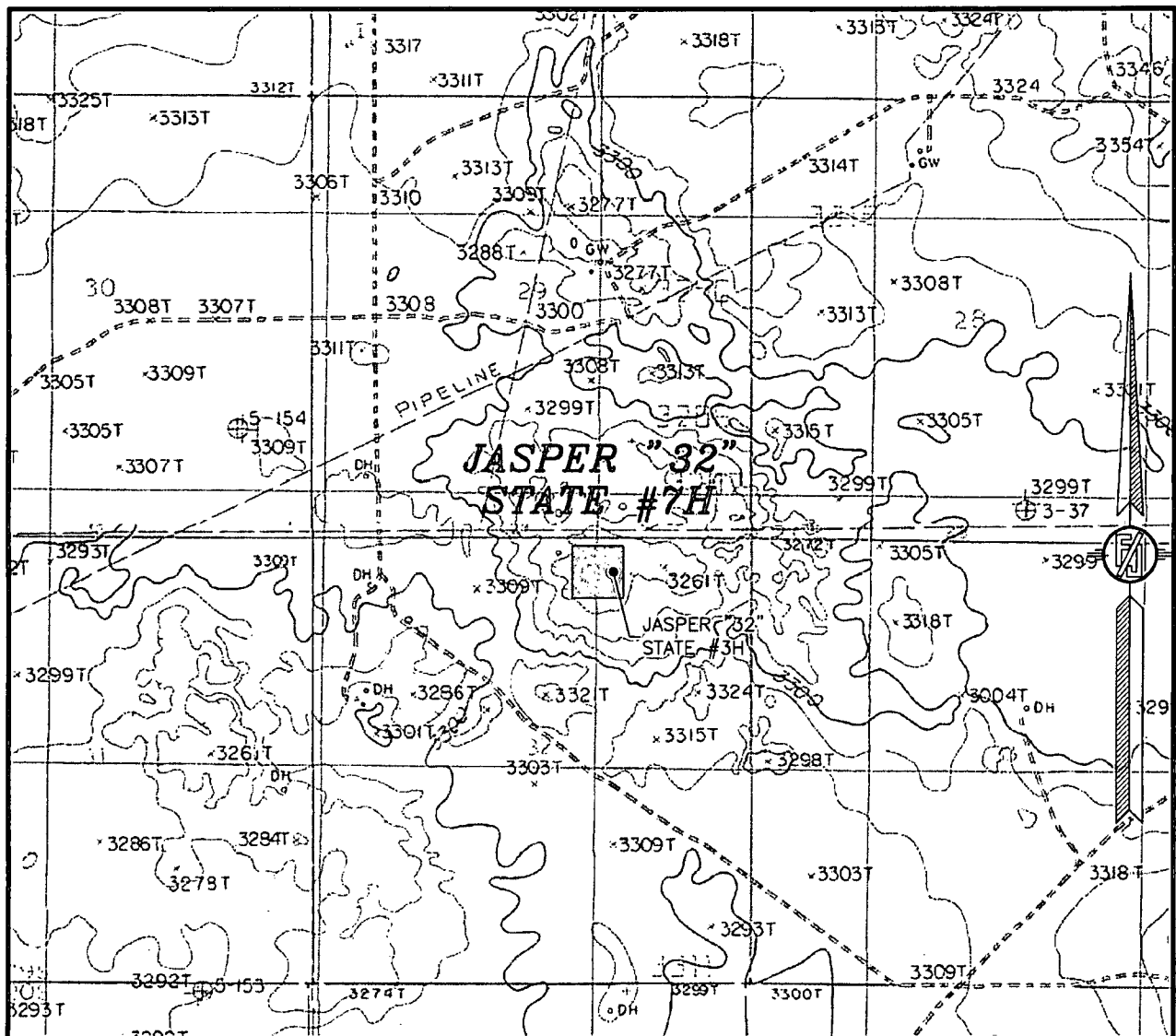
LOCATED 340 FT. FROM THE NORTH LINE
AND 1875 FT. FROM THE EAST LINE OF
SECTION 32, TOWNSHIP 19 SOUTH,
RANGE 29 EAST, N.M.P.M.
EDDY COUNTY, STATE OF NEW MEXICO

JUNE 27, 2012

SURVEY NO. 975R

MADRON SURVEYING, INC. 301 SOUTH CANAL (575) 234-3341 CARLSBAD, NEW MEXICO

SECTION 32, TOWNSHIP 19 SOUTH, RANGE 29 EAST, N.M.P.M.
 EDDY COUNTY, STATE OF NEW MEXICO
 LOCATION VERIFICATION MAP



USGS QUAD MAP:
 ILLINOIS CAMP SE

NOT TO SCALE

DEVON ENERGY PRODUCTION COMPANY, L.P.

JASPER "32" STATE #7H

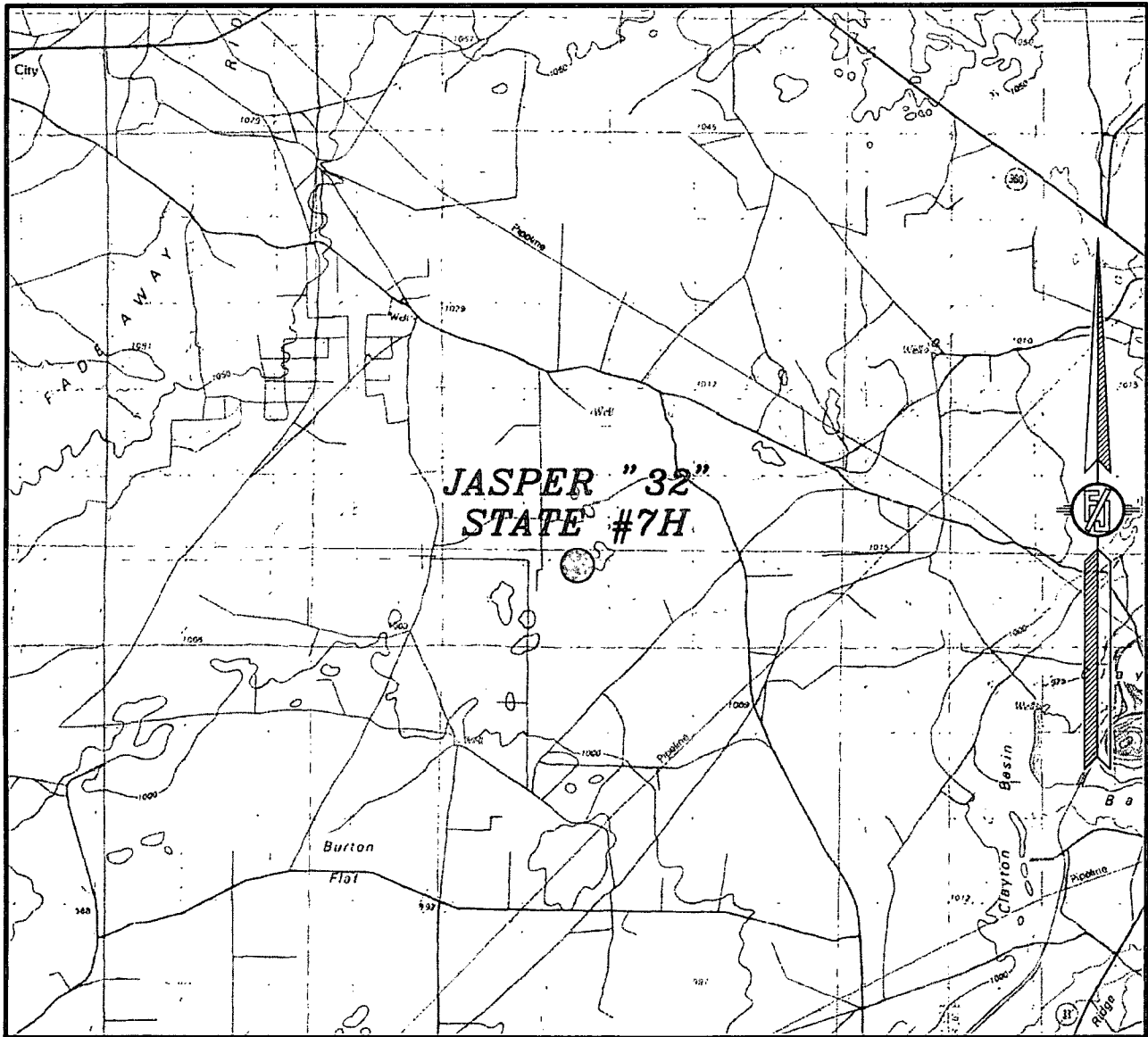
LOCATED 340 FT. FROM THE NORTH LINE
 AND 1875 FT. FROM THE EAST LINE OF
 SECTION 32, TOWNSHIP 19 SOUTH,
 RANGE 29 EAST, N.M.P.M.
 EDDY COUNTY, STATE OF NEW MEXICO

JUNE 27, 2012

SURVEY NO. 975R

MADRON SURVEYING, INC. 301 SOUTH CANAL (575) 234-3341 CARLSBAD, NEW MEXICO

SECTION 32, TOWNSHIP 19 SOUTH, RANGE 29 EAST, N.M.P.M.
EDDY COUNTY, STATE OF NEW MEXICO
VICINITY MAP



NOT TO SCALE

DEVON ENERGY PRODUCTION COMPANY, L.P.

JASPER "32" STATE #7H

LOCATED 340 FT. FROM THE NORTH LINE
AND 1875 FT. FROM THE EAST LINE OF
SECTION 32, TOWNSHIP 19 SOUTH,
RANGE 29 EAST, N.M.P.M.
EDDY COUNTY, STATE OF NEW MEXICO

JUNE 27, 2012

SURVEY NO. 975R

MADRON SURVEYING, INC. 301 SOUTH CANAL (575) 234-3341 CARLSBAD, NEW MEXICO

SECTION 32, TOWNSHIP 19 SOUTH, RANGE 29 EAST, N.M.P.M.
EDDY COUNTY, STATE OF NEW MEXICO
AERIAL PHOTO



NOT TO SCALE
AERIAL PHOTO:
GOOGLE EARTH
JUNE, 2011

DEVON ENERGY PRODUCTION COMPANY, L.P.

JASPER "32" STATE #7H

LOCATED 340 FT. FROM THE NORTH LINE
AND 1875 FT. FROM THE EAST LINE OF
SECTION 32, TOWNSHIP 19 SOUTH,
RANGE 29 EAST, N.M.P.M.
EDDY COUNTY, STATE OF NEW MEXICO

JUNE 27, 2012

SURVEY NO. 975R

MADRON SURVEYING, INC. 301 SOUTH CANAL (575) 234-3341 CARLSBAD, NEW MEXICO