

District I
1625 N. French Dr., Hobbs, NM 88240
Phone: (575) 393-6161 Fax: (575) 393-0720

District II
811 S. First St., Artesia, NM 88210
Phone: (575) 748-1283 Fax: (575) 748-9720

District III
1000 Rio Brazos Road, Aztec, NM 87410
Phone: (505) 334-6178 Fax: (505) 334-6170

District IV
1220 S. St. Francis Dr., Santa Fe, NM 87505
Phone: (505) 476-3460 Fax: (505) 476-3462

RECEIVED

DEC 04 2013

NMOC D ARTESIA

State of New Mexico

Energy Minerals and Natural Resources

Oil Conservation Division

1220 South St. Francis Dr.

Santa Fe, NM 87505

Form C-101
Revised July 18, 2013

☐ AMENDED REPORT

APPLICATION FOR PERMIT TO DRILL, RE-ENTER, DEEPEN, PLUGBACK, OR ADD A ZONE

¹ Operator Name and Address JALAPENO CORPORATION PO BOX 1608 ALBUQUERQUE, NM 87103		² OGRID Number 26307
³ Property Code 40272	⁴ Property Name KOBE 22 STATE	⁵ API Number 30-005-64180
		⁶ Well No. 001

7. Surface Location

UL - Lot E	Section 22	Township 9-S	Range 27-E	Lot Idn	Feet from 2195	N/S Line NORTH	Feet From 330	E/W Line WEST	County CHAVES
----------------------	----------------------	------------------------	----------------------	---------	--------------------------	--------------------------	-------------------------	-------------------------	-------------------------

8. Proposed Bottom Hole Location

UL - Lot	Section	Township	Range	Lot Idn	Feet from	N/S Line	Feet From	E/W Line	County
----------	---------	----------	-------	---------	-----------	----------	-----------	----------	--------

9. Pool Information

¹⁰ Pool Name WOLF LAKE; SAN ANDRES, S. WILDCAT WELL	¹¹ Pool Code 65075
--	---

Additional Well Information

¹² Work Type NEW WELL	¹³ Well Type OIL	¹⁴ Cable/Rotary CABLE	¹⁵ Lease Type STATE	¹⁶ Ground Level Elevation 3861'
¹⁷ Multiple NO	¹⁸ Proposed Depth 2100	¹⁹ Formation SAN ANDRES	²⁰ Contractor JALAPENO CORPORATION	²¹ Spud Date
²² Depth to Ground water 135		²³ Distance from nearest fresh water well appr. 4.5 miles		²⁴ Distance to nearest surface water appr. 4.25 miles

☐ We will be using a closed-loop system in lieu of lined pits

21. Proposed Casing and Cement Program

Type	Hole Size	Casing Size	Casing Weight/ft	Setting Depth	Sacks of Cement	Estimated TOC
Surface	12 1/4	8 5/8	24#	400'	250 SX	Surface
Production	7 7/8	5 1/2	15.5#	2100'	275 SX	1600'

Casing/Cement Program: Additional Comments

--

22. Proposed Blowout Prevention Program

Type	Working Pressure	Test Pressure	Manufacturer
Pressure System Schematic	2000 PSI	2000	

²⁵ I hereby certify that the information given above is true and complete to the best of my knowledge and belief. I further certify that I have complied with 19.15.14.9 (A) NMAC <input type="checkbox"/> and/or 19.15.14.9 (B) NMAC <input type="checkbox"/> if applicable. Signature: <i>Jun Barrack</i>		OIL CONSERVATION DIVISION	
Printed name: Jun Barrack		Approved By: <i>T. C. Shepard</i>	
Title: Oil & Gas Operations Associate		Title: "Geologist"	
E-mail Address: eyates@jalapenocorp.com (Edmons) or jbarack@jalapenocorp.com		Approved Date: 12/4/2013 Expiration Date: 12/4/2015	
Date: 12/2/13	Phone: 505-242-2050	Conditions of Approval Attached	

DISTRICT I
1625 N. French Dr., Hobbs, NM 88240
Phone: (575) 393-6161 Fax: (575) 393-0720

DISTRICT II
511 S. First St., Artesia, NM 88210
Phone: (575) 748-1283 Fax: (575) 748-0720

DISTRICT III
1000 Rio Brazos Road, Aztec, NM 87410
Phone: (505) 334-6178 Fax: (505) 334-6170

DISTRICT IV
1220 S. St. Francis Dr., Santa Fe, NM 87505
Phone: (505) 476-3460 Fax: (505) 476-3462

State of New Mexico
Energy, Minerals & Natural Resources Department
OIL CONSERVATION DIVISION
1220 South St. Francis Dr.
Santa Fe, New Mexico 87505

Form C-102
Revised August 1, 2011
Submit one copy to appropriate
District Office

AMENDED REPORT

WELL LOCATION AND ACREAGE DEDICATION PLAT

API Number 30-005-64180	Pool Code 65075	Well Name Wolf Lake, San Andres S.
Property Code 40272	Property Name KOBE 22 STATE	Well Number 1
GRID No. 26307	Operator Name JALAPENO CORPORATION	Elevation 3861'

Surface Location

UL or lot No.	Section	Township	Range	Lot Idn	Feet from the	North/South line	Feet from the	East/West line	County
E	22	9-S	27-E		2195	NORTH	330	WEST	CHAVES

Bottom Hole Location If Different From Surface

UL or lot No.	Section	Township	Range	Lot Idn	Feet from the	North/South line	Feet from the	East/West line	County
Dedicated Acres 40	Joint or Infill	Consolidation Code	Order No.						

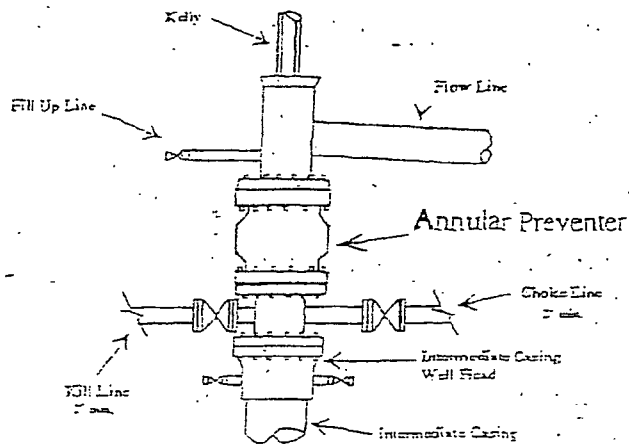
NO ALLOWABLE WILL BE ASSIGNED TO THIS COMPLETION UNTIL ALL INTERESTS HAVE BEEN CONSOLIDATED OR A NON-STANDARD UNIT HAS BEEN APPROVED BY THE DIVISION

	<p>GEODETC COORDINATES NAD 27 NME</p>	<p>OPERATOR CERTIFICATION</p> <p>I hereby certify that the information herein is true and complete to the best of my knowledge and belief, and that this organization either owns a working interest or unleased mineral interest in the land including the proposed bottom hole location or has a right to drill this well at this location pursuant to a contract with an owner of such mineral or working interest, or to a voluntary pooling agreement or a compulsory pooling order heretofore entered by the division.</p> <p><i>H. Emmans</i> <i>Nov 20, 2013</i> Signature Date</p> <p><i>H. Emmans</i> Printed Name</p> <p><i>eyates@jalapenocorp.com</i> E-mail Address</p>	
	<p>SURFACE LOCATION Y=916578.2 N X=544235.1 E</p>		<p>SURVEYOR CERTIFICATION</p> <p>I hereby certify that the well location shown on this plat was plotted from field notes of actual surveys made by me or under my supervision, and that the same is true and correct to the best of my belief.</p>
	<p>LAT.=33.519568° N LONG.=104.188193° W</p>		<p>NOVEMBER 14, 2013</p>
			<p>Date of Survey</p> <p>Signature & Seal of Professional Surveyor:</p> <p><i>Ronald J. Eidson</i> <i>11/19/2013</i> Certificate Number Gary G. Eidson 12641 Ronald J. Eidson 3239</p> <p>BKI. JWSC W.O. 13.11.1263</p>

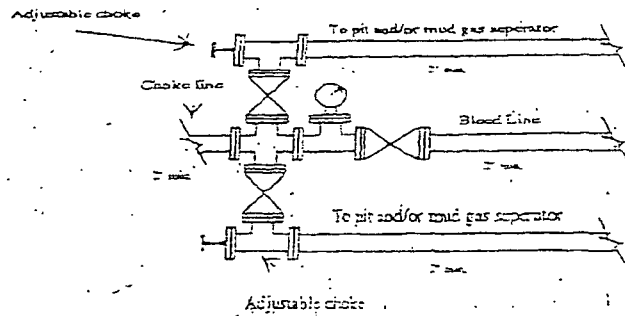
JALAPENO CORPORATION

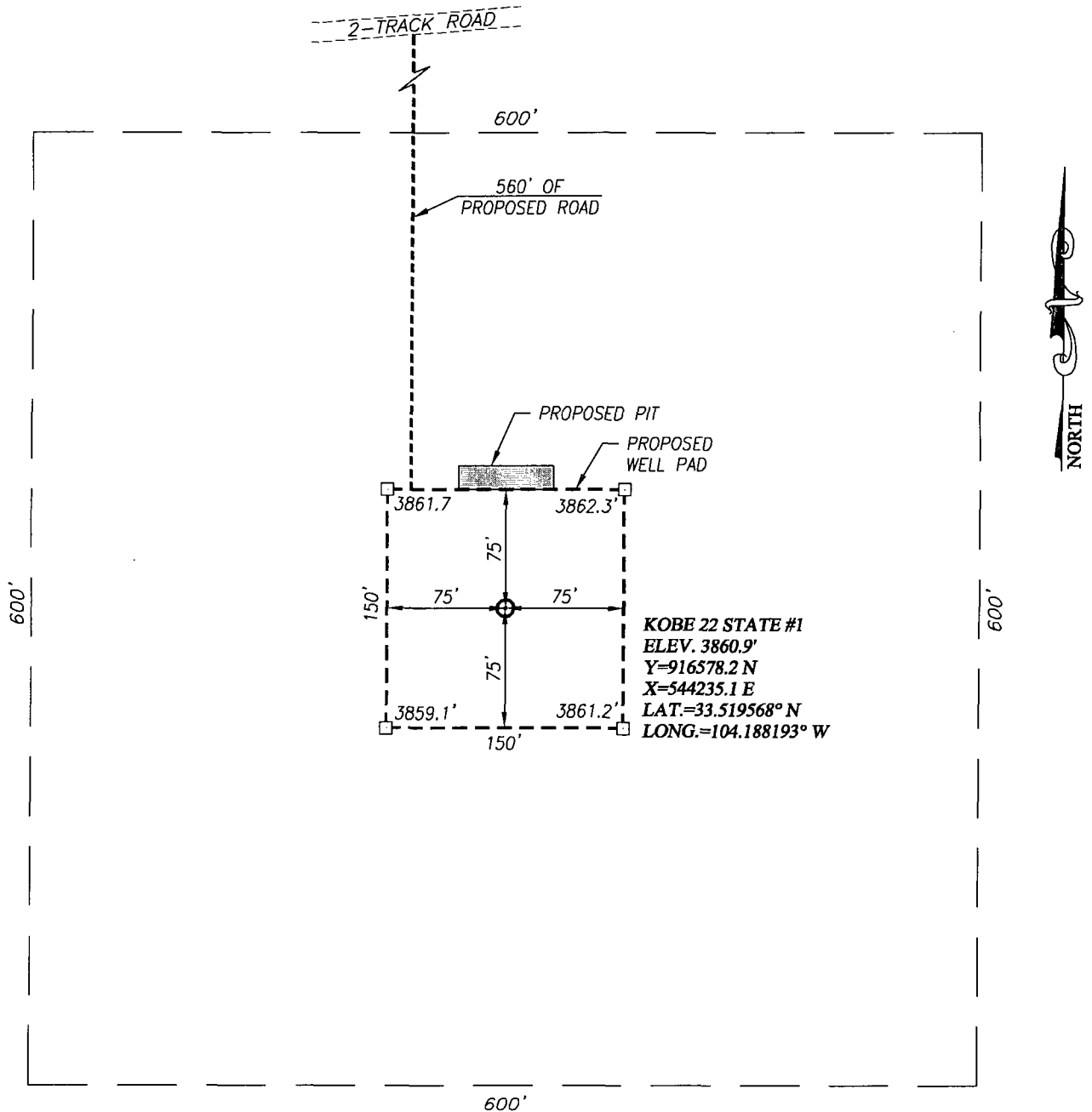
KOBE 22 STATE #1

2,000 psi Pressure System
Schematic



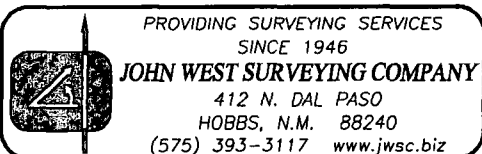
Typical 2,000 psi choke manifold assembly with at least these minimum features





DIRECTIONS TO LOCATION

FROM THE INTERSECTION OF ST. HIGHWAY #380 AND COUNTY ROAD #51 (PONDEROSA RD.) GO NORTH ON CO. RD. #51 APPROX 6.9 MILES; TURN RIGHT AND GO EAST-NORTHEAST APPROX. 0.8 MILES TO A PROPOSED ACCESS ROAD SURVEY. FOLLOW STAKED ROAD SOUTH 560 FEET TO THE NORTHWEST PAD CORNER.

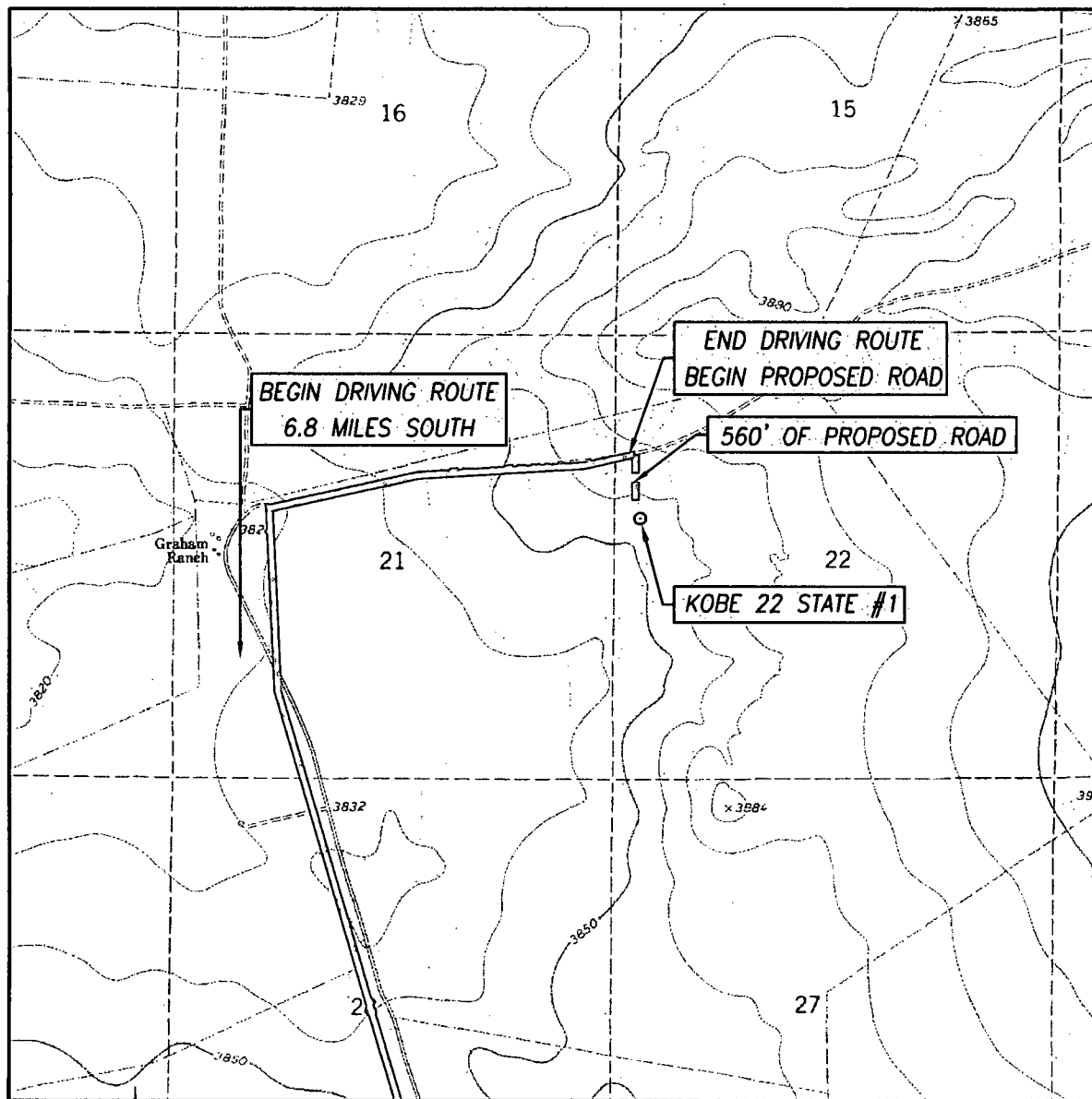


JALAPENO CORPORATION

KOBE 22 STATE #1 WELL
 LOCATED 2195 FEET FROM THE NORTH LINE
 AND 330 FEET FROM THE WEST LINE OF SECTION 22,
 TOWNSHIP 9 SOUTH, RANGE 27 EAST, N.M.P.M.,
 CHAVES COUNTY, NEW MEXICO

Survey Date: 11/14/13	CAD Date: 11/19/13	Drawn By: BKL
W.O. No.: 13111268	Rev: .	Rel. W.O.:
		Sheet 1 of 1

LOCATION VERIFICATION MAP



SCALE: 1" = 2000'

CONTOUR INTERVAL:
CAMPBELL, N.M. - 10'

SEC. 22 TWP. 9-S RGE. 27-E

SURVEY N.M.P.M.

COUNTY CHAVES STATE NEW MEXICO

DESCRIPTION 2195' FNL & 330' FWL

ELEVATION 3861'

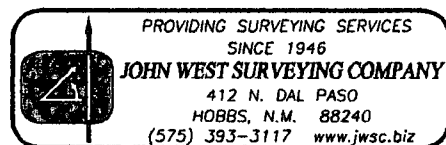
OPERATOR JALAPENO CORPORATION

LEASE KOBE 22 STATE

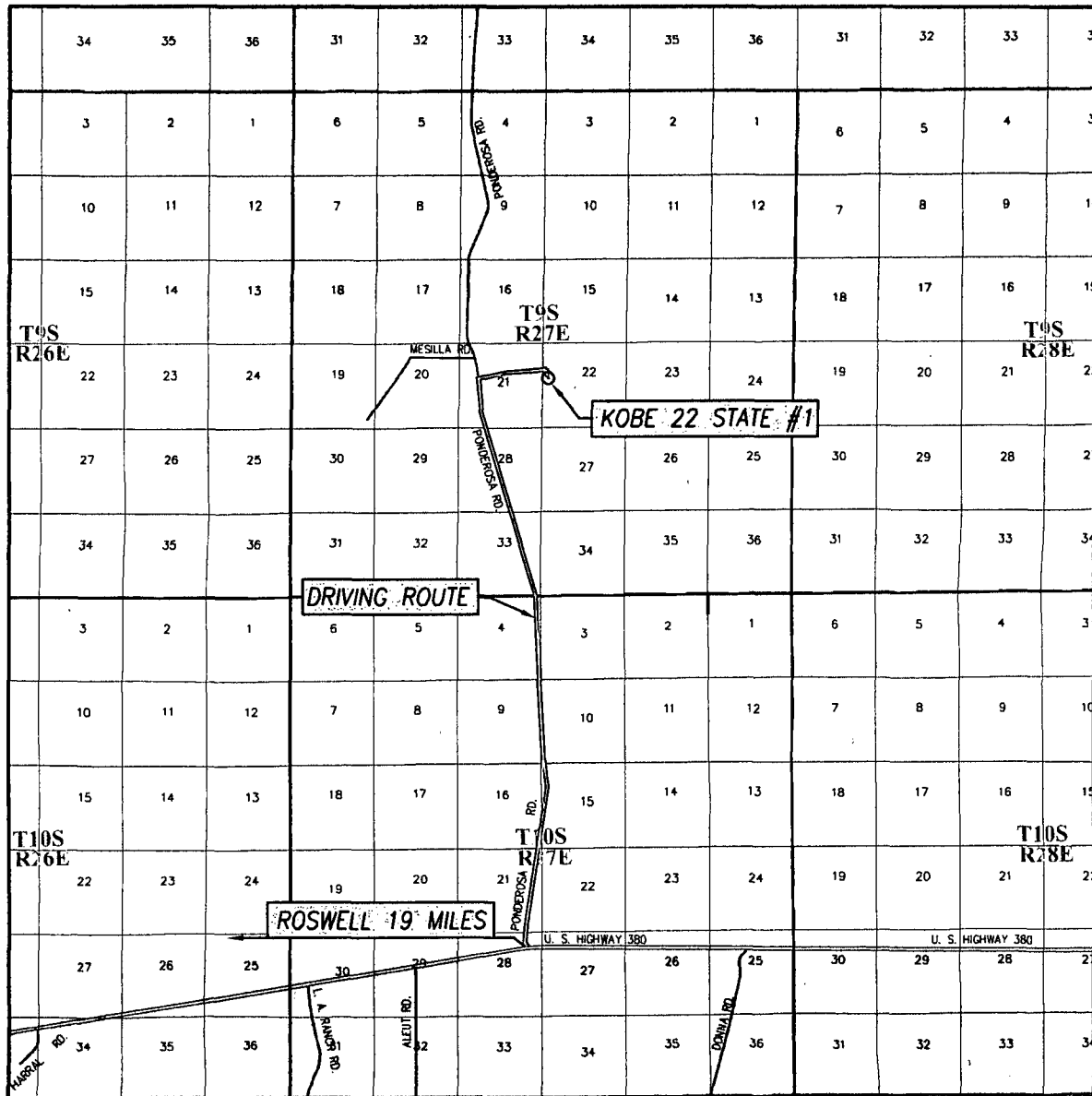
U.S.G.S. TOPOGRAPHIC MAP
CAMPBELL, N.M.

DIRECTIONS TO LOCATION

FROM THE INTERSECTION OF ST. HIGHWAY #380 AND COUNTY ROAD #51 (PONDEROSA RD.) GO NORTH ON CO. RD. #51 APPROX 6.9 MILES; TURN RIGHT AND GO EAST-NORTHEAST APPROX. 0.8 MILES TO A PROPOSED ACCESS ROAD SURVEY. FOLLOW STAKED ROAD SOUTH 560 FEET TO THE NORTHWEST PAD CORNER.

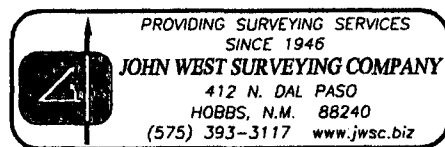


VICINITY MAP



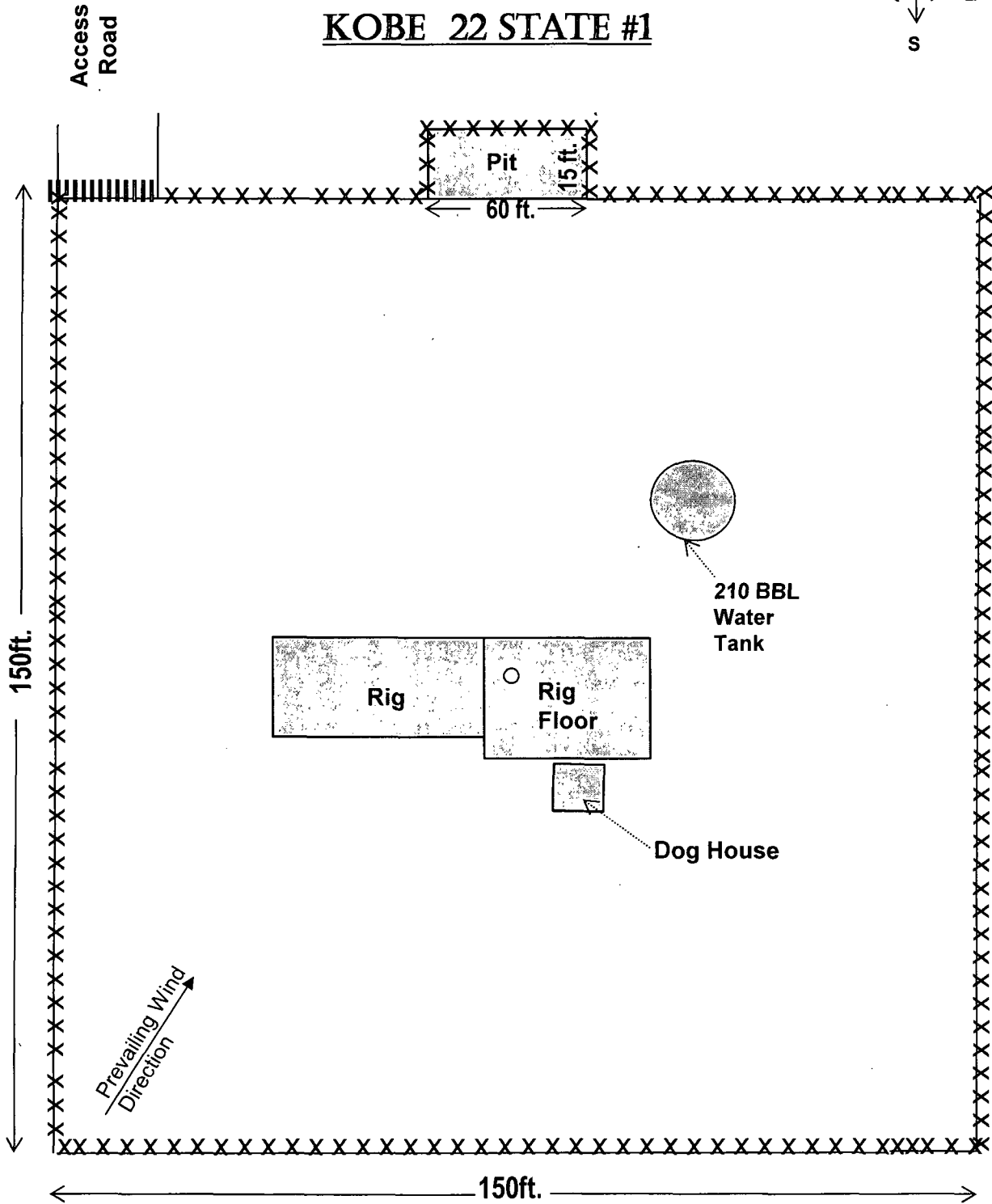
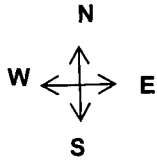
SCALE: 1" = 2 MILES
DRIVING ROUTE: SEE LOCATION MAP

SEC. 22 TWP. 9-S RGE. 27-E
SURVEY N.M.P.M.
COUNTY CHAVES STATE NEW MEXICO
DESCRIPTION 2195' FNL & 330' FWL
ELEVATION 3861'
OPERATOR JALAPENO CORPORATION
LEASE KOBE 22 STATE



JALAPENO CORPORATION

KOBE 22 STATE #1



LEGEND	
....xxx....	Fence
.... 	Cattle guard

SEC. 22 TWP. 09S RGE. 27E
COUNTY CHAVES STATE NEW MEXICO
DESCRIPTION 2195 FNL & 330 FEL