

District I  
1625 N. French Dr., Hobbs, NM 88240  
Phone: (575) 393-6161 Fax: (575) 393-0720  
District II  
811 S. First St., Artesia, NM 88210  
Phone: (575) 748-1283 Fax: (575) 748-9720  
District III  
1000 Rio Brazos Road, Aztec, NM 87410  
Phone: (505) 334-6178 Fax: (505) 334-6170  
District IV  
1220 S. St. Francis Dr., Santa Fe, NM 87505  
Phone: (505) 476-3460 Fax: (505) 476-3462

State of New Mexico  
Energy, Minerals & Natural Resources Department  
OIL CONSERVATION DIVISION  
1220 South St. Francis Dr.  
Santa Fe, NM 87505

RECEIVED

DEC 04 2013

Form C-102

Revised August 1, 2011

NMOC DARTESIA

This form shall apply to appropriate

District Office

☐ AMENDED REPORT

WELL LOCATION AND ACREAGE DEDICATION PLAT

<sup>1</sup> API Number <b>30-015-41837</b>	<sup>2</sup> Pool Code <b>96437</b>	<sup>3</sup> Pool Name <b>Happy Valley, Bone Spring</b>
<sup>4</sup> Property Code <b>40253</b>	<sup>5</sup> Property Name <b>BOSS HOGG 15 STATE COM</b>	<sup>6</sup> Well Number <b>WC-015 G-04 S232615DP; P.S.</b>
<sup>7</sup> OGRID No. <b>6137</b>	<sup>8</sup> Operator Name <b>DEVON ENERGY PRODUCTION COMPANY, L.P.</b>	<sup>9</sup> Elevation <b>3306.4</b>

<sup>10</sup> Surface Location

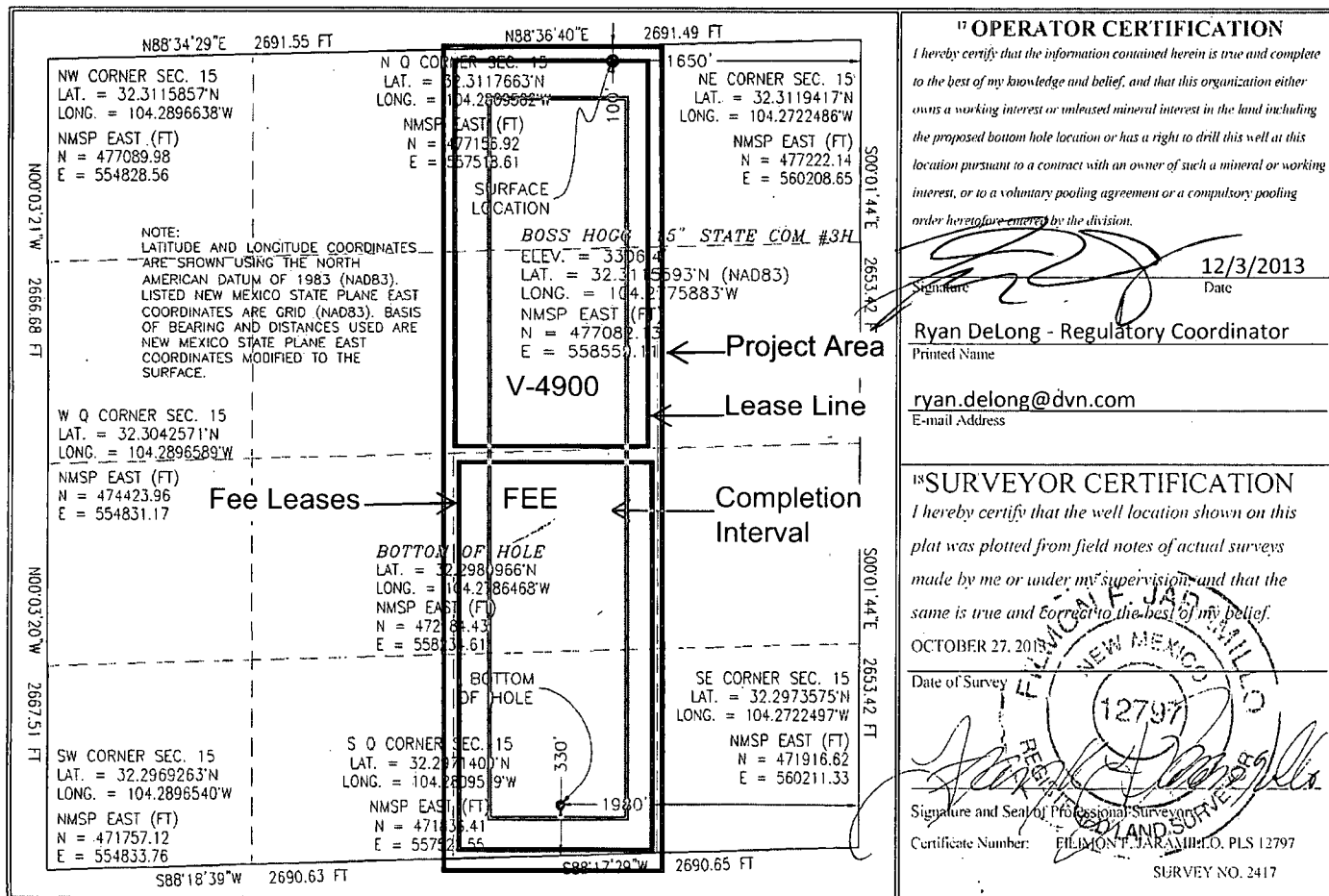
UL or lot no.	Section	Township	Range	Lot Idn	Feet from the	North/South line	Feet from the	East/West line	County
<b>B</b>	<b>15</b>	<b>23 S</b>	<b>26 E</b>		<b>100</b>	<b>NORTH</b>	<b>1650</b>	<b>EAST</b>	<b>EDDY</b>

<sup>11</sup> Bottom Hole Location If Different From Surface

UL or lot no.	Section	Township	Range	Lot Idn	Feet from the	North/South line	Feet from the	East/West line	County
<b>O</b>	<b>15</b>	<b>23 S</b>	<b>26 E</b>		<b>330</b>	<b>SOUTH</b>	<b>1980</b>	<b>EAST</b>	<b>EDDY</b>

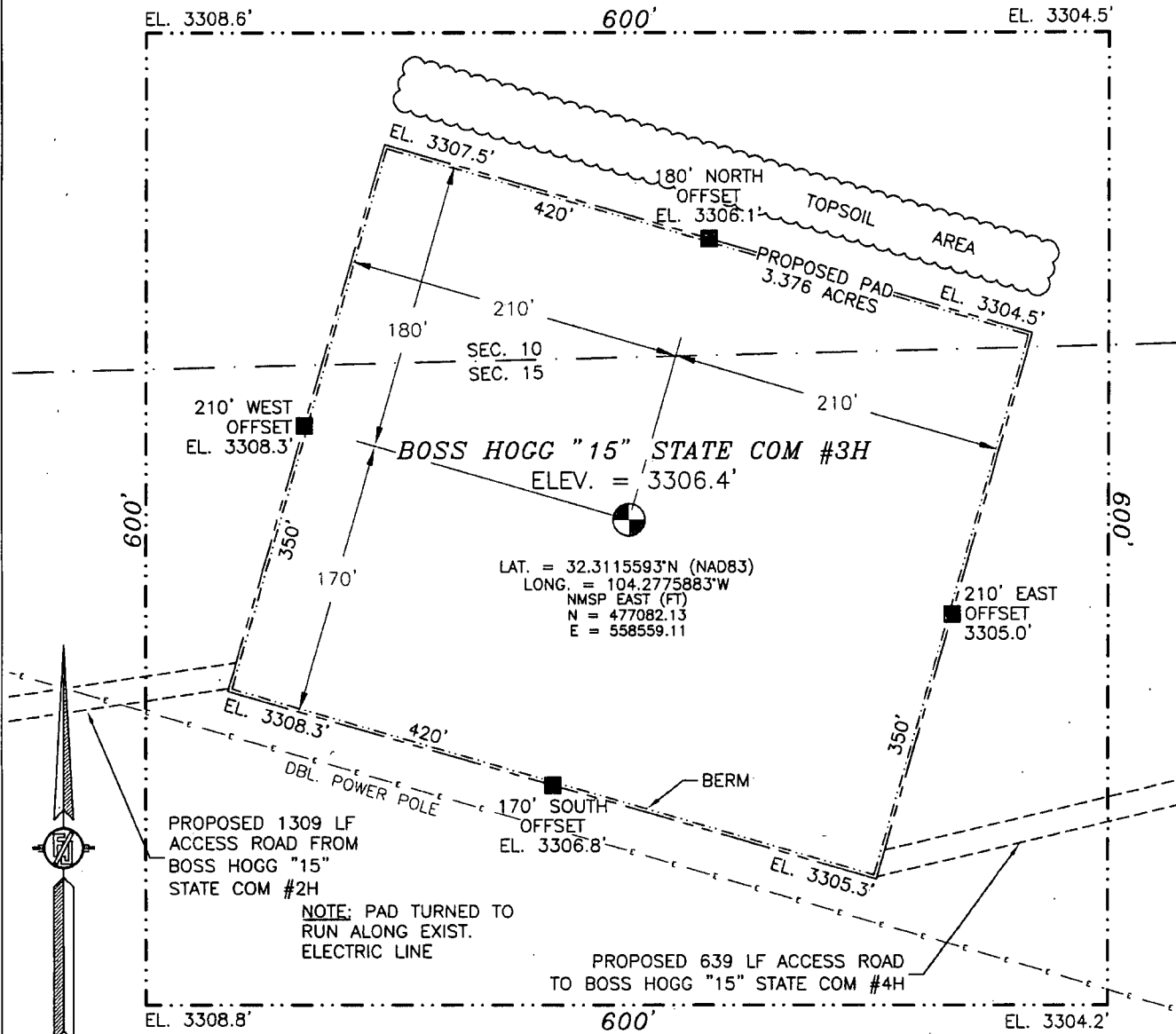
<sup>12</sup> Dedicated Acres <b>160.00</b>	<sup>13</sup> Joint or Infill	<sup>14</sup> Consolidation Code	<sup>15</sup> Order No.
------------------------------------------------	-------------------------------	----------------------------------	-------------------------

No allowable will be assigned to this completion until all interests have been consolidated or a non-standard unit has been approved by the division.



SECTION 15, TOWNSHIP 23 SOUTH, RANGE 26 EAST, N.M.P.M.  
EDDY COUNTY, STATE OF NEW MEXICO  
**SITE MAP**

NOTE: LATITUDE AND LONGITUDE COORDINATES ARE SHOWN USING THE NORTH AMERICAN DATUM OF 1983 (NAD83). LISTED NEW MEXICO STATE PLANE EAST COORDINATES ARE GRID (NAD83). BASIS OF BEARING AND DISTANCES USED ARE NEW MEXICO STATE PLANE EAST COORDINATES MODIFIED TO THE SURFACE



010 50 100 200

SCALE 1" = 100'

**DIRECTIONS TO LOCATION**

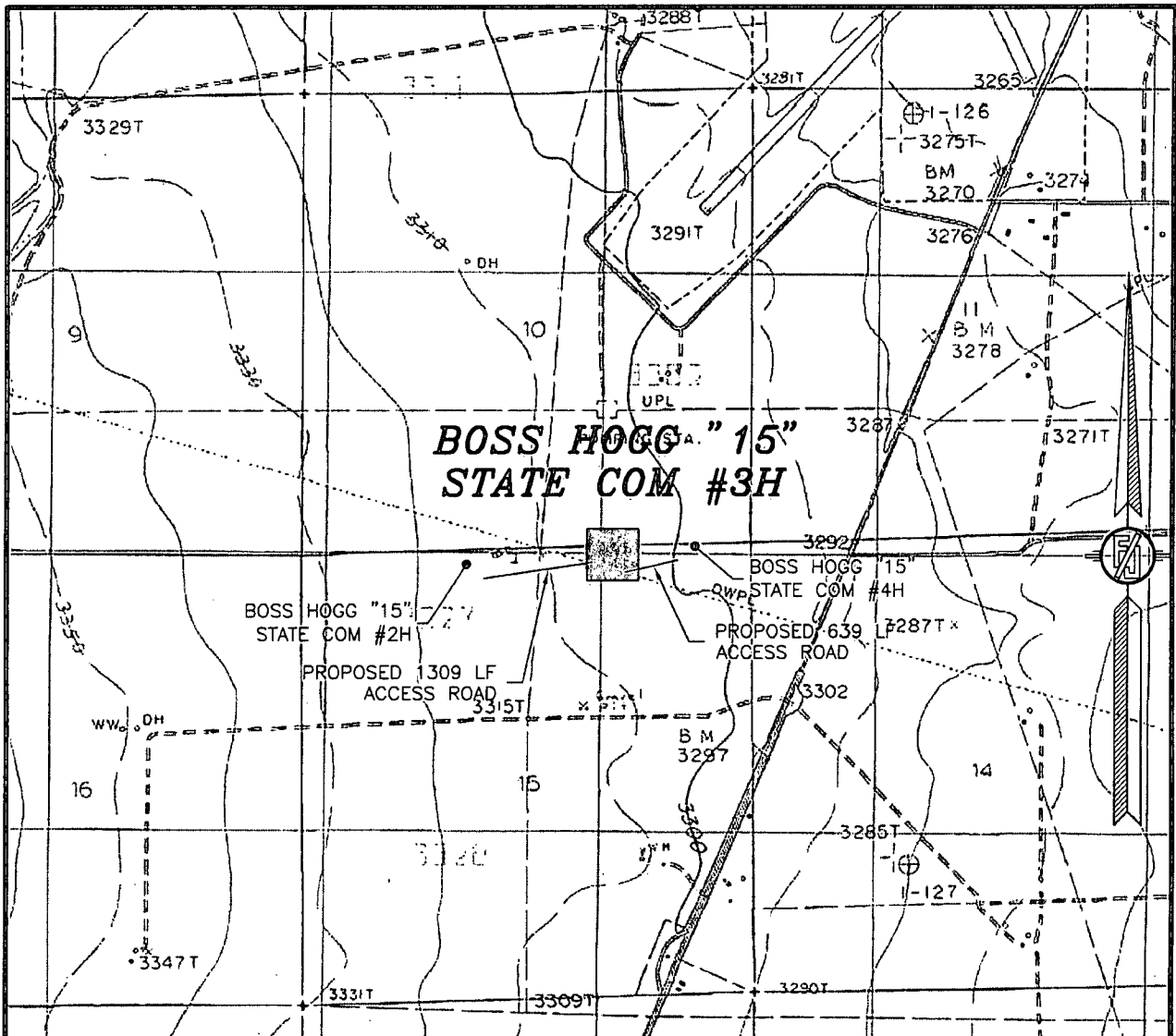
FROM MILE MARKER 28 ON NATIONAL PARKS HIGHWAY GO SOUTH APPROX. 0.9 MILES TO LEASE ROAD ON RIGHT (WEST) TURN WEST GO APPROX. 0.9 MILES, PASS CALICHE PIT ON RIGHT (NORTH) TO A ROAD LATH ON RIGHT (NORTH) OF LEASE ROAD WITH RED AND WHITE FLAGGING. FOLLOW ROAD LATHS GOING NORTH APPROX. 0.31 MILES TO BOSS HOGG "15" STATE COM #1H, CENTERLINE PROPOSED ROAD LATHS CONTINUES GOING EAST APPROX. 0.2 MILES TO BOSS HOGG "15" STATE COM #2H. FROM SOUTHEAST PAD CORNER GO EAST APPROX. 0.24 MILES TO SOUTHWEST PAD CORNER FOR THIS LOCATION.

DEVON ENERGY PRODUCTION COMPANY, L.P.  
**BOSS HOGG "15" STATE COM #3H**  
LOCATED 100 FT. FROM THE NORTH LINE  
AND 1650 FT. FROM THE EAST LINE OF  
SECTION 15, TOWNSHIP 23 SOUTH,  
RANGE 26 EAST, N.M.P.M.  
EDDY COUNTY, STATE OF NEW MEXICO

OCTOBER 27, 2013

SURVEY NO. 2417

MADRON SURVEYING, INC. 301 SOUTH CANAL (575) 234-3341 CARLSBAD, NEW MEXICO



USGS QUAD MAP:  
KITCHEN COVE

NOT TO SCALE

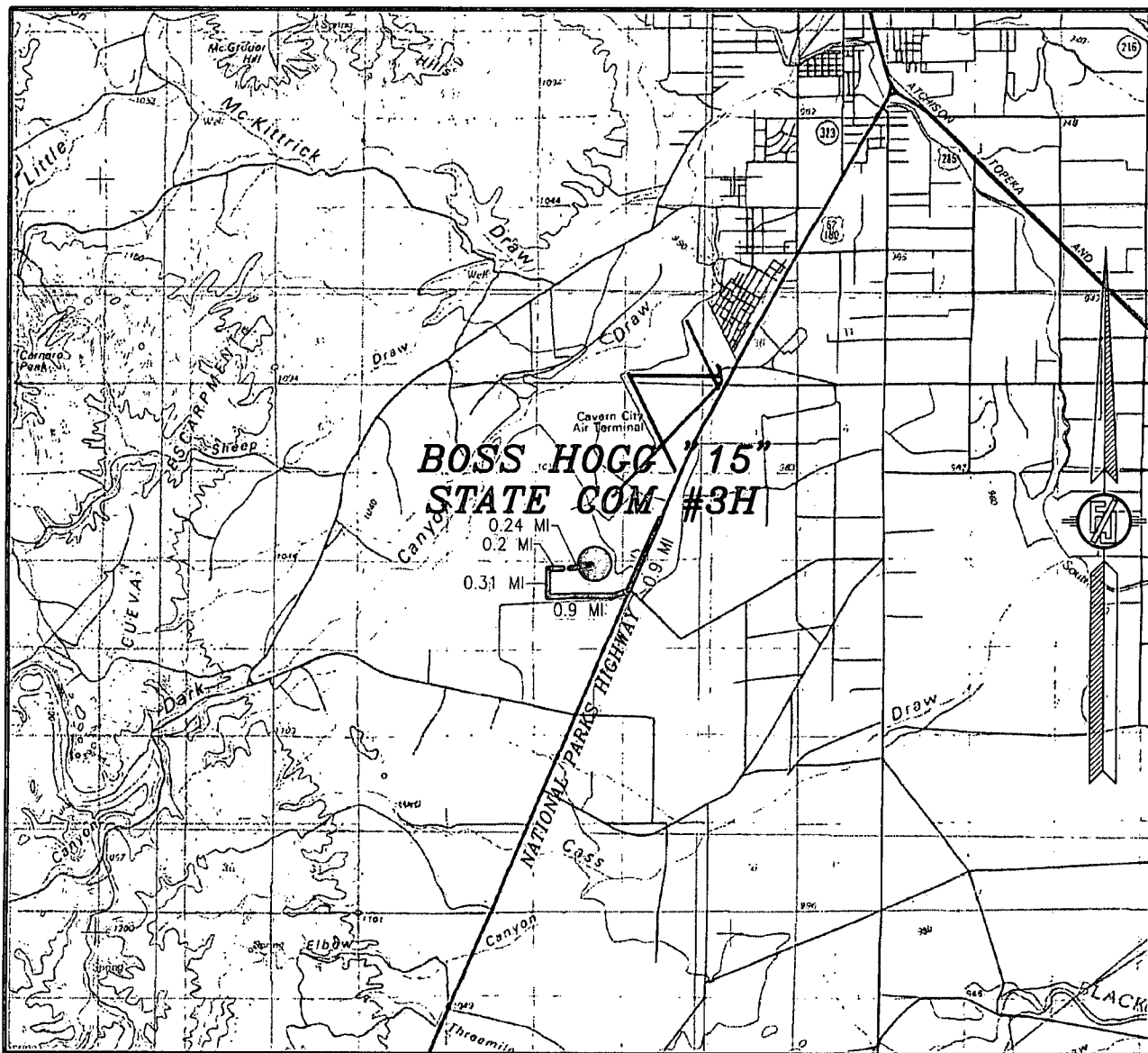
DEVON ENERGY PRODUCTION COMPANY, L.P.  
BOSS HOGG "15" STATE COM #3H  
LOCATED 100 FT. FROM THE NORTH LINE  
AND 1650 FT. FROM THE EAST LINE OF  
SECTION 15, TOWNSHIP 23 SOUTH,  
RANGE 26 EAST, N.M.P.M.  
EDDY COUNTY, STATE OF NEW MEXICO

OCTOBER 27, 2013

SURVEY NO. 2417.

MADRON SURVEYING, INC. 301 SOUTH CANAL CARLSBAD, NEW MEXICO  
(575) 234-3341

SECTION 15, TOWNSHIP 23 SOUTH, RANGE 26 EAST, N.M.P.M.  
EDDY COUNTY, STATE OF NEW MEXICO  
VICINITY MAP



DEVON ENERGY PRODUCTION COMPANY, L.P.

**BOSS HOGG "15" STATE COM #3H**

LOCATED 100 FT. FROM THE NORTH LINE  
AND 1650 FT. FROM THE EAST LINE OF  
SECTION 15, TOWNSHIP 23 SOUTH,  
RANGE 26 EAST, N.M.P.M.  
EDDY COUNTY, STATE OF NEW MEXICO

OCTOBER 27, 2013

**DIRECTIONS TO LOCATION**

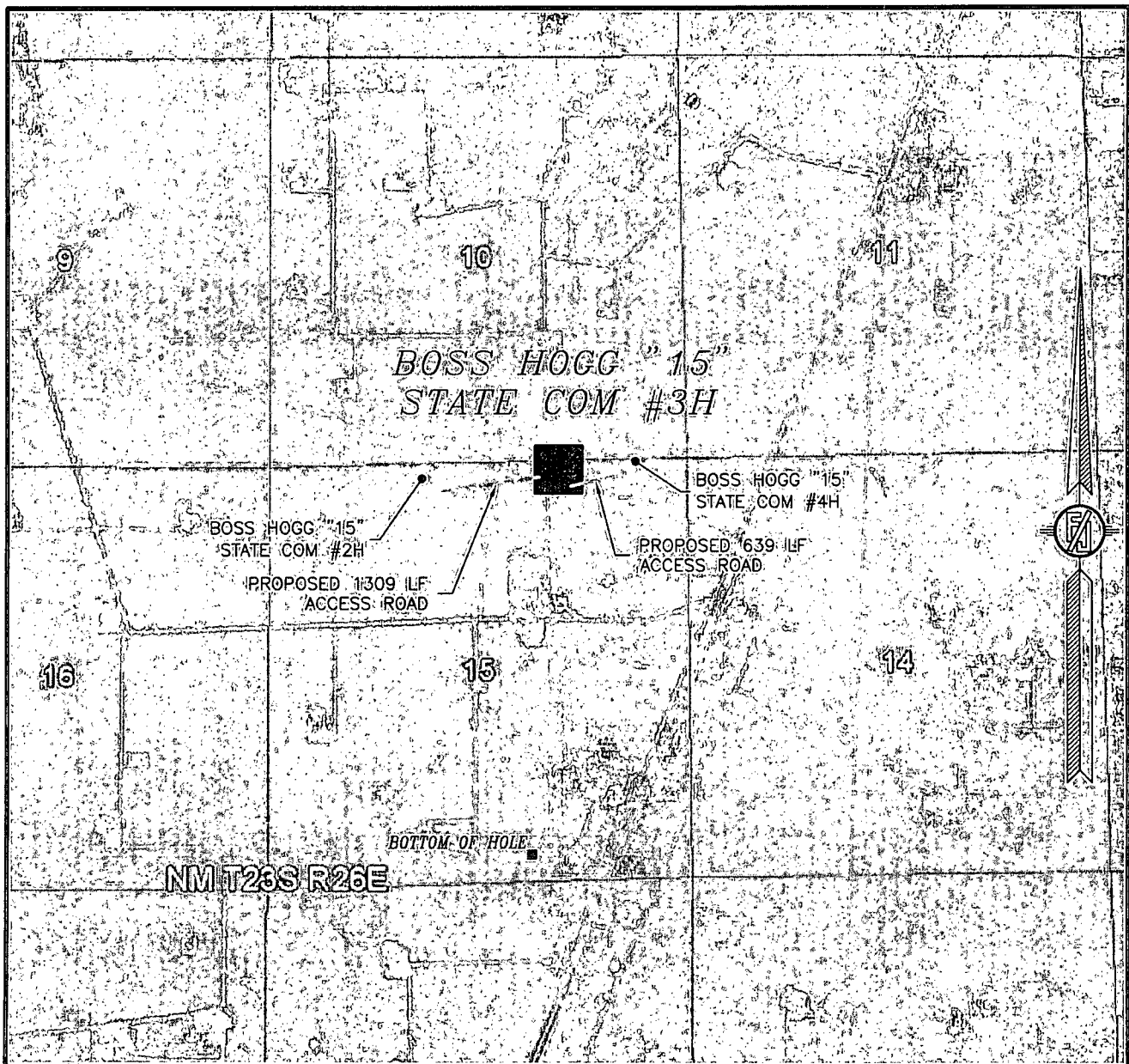
FROM MILE MARKER 28 ON NATIONAL PARKS HIGHWAY GO SOUTH  
APPROX. 0.9 MILES TO LEASE ROAD ON RIGHT (WEST) TURN WEST  
GO APPROX. 0.9 MILES, PASS CALICHE PIT ON RIGHT (NORTH) TO A  
ROAD LATH ON RIGHT (NORTH) OF LEASE ROAD WITH RED AND WHITE  
FLAGGING. FOLLOW ROAD LATHS GOING NORTH APPROX. 0.31 MILES  
TO BOSS HOGG "15" STATE COM #1H, CENTERLINE PROPOSED ROAD  
LATHS CONTINUES GOING EAST APPROX. 0.2 MILES TO BOSS HOGG  
"15" STATE COM #2H. FROM SOUTHEAST PAD CORNER GO EAST  
APPROX. 0.24 MILES TO SOUTHWEST PAD CORNER FOR THIS  
LOCATION.

NOT TO SCALE

MADRON SURVEYING, INC. 301 SOUTH CANAL (575) 234-3341

SURVEY NO. 2417  
CARLSBAD, NEW MEXICO

SECTION 15, TOWNSHIP 23 SOUTH, RANGE 26 EAST, N.M.P.M.  
EDDY COUNTY, STATE OF NEW MEXICO  
AERIAL PHOTO



NOT TO SCALE  
AERIAL PHOTO:  
GOOGLE EARTH  
APRIL 2013

DEVON ENERGY PRODUCTION COMPANY, L.P.

**BOSS HOGG "15" STATE COM #3H**

LOCATED 100 FT. FROM THE NORTH LINE  
AND 1650 FT. FROM THE EAST LINE OF  
SECTION 15, TOWNSHIP 23 SOUTH,  
RANGE 26 EAST, N.M.P.M.  
EDDY COUNTY, STATE OF NEW MEXICO

OCTOBER 27, 2013

SURVEY NO. 2417

MADRON SURVEYING, INC. 301 SOUTH CANAL (575) 234-3341 CARLSBAD, NEW MEXICO