

ATS-14-15

Form 3160-3
(March 2012)

OCD Artesia

FORM APPROVED
OMB No. 1004-0137
Expires October 31, 2014UNITED STATES
DEPARTMENT OF THE INTERIOR
BUREAU OF LAND MANAGEMENT5. Lease Serial No.
SHL: NM041645; BHL: NM041424

6. If Indian, Allottee or Tribe Name

7. If Unit or CA Agreement, Name and No.

8. Lease Name and Well No.

Marquardt Federal #11H

9. API Well No.

30025

10. Field and Pool, or Exploratory
Bone Spring Windcat

11. Sec., T. R. M. or Blk. and Survey and Area

13, 25S, 26E

1a. Type of Work



DRILL



REENTER

1b. Type of Well



Oil Well



Gas Well



Other



Single Zone



Multiple Zone

2. Name of Operator

Cimarex Energy Co.

3a. Address

600 N. Marienfield St. Ste. 600 Midland Tx 79071

3b. Phone No. (include area code)

432-571-7800

4. Location of Well (Report location clearly and in accordance with any State requirements. *)

At Surface

360 FNL & 1750 FWL: 13-25S-26E

At proposed prod. Zone

330 FNL & 1980 FWL: 12-25S-26E

Bone Spring

14. Distance in miles and direction from nearest town or post office*

Approximately 18 miles south of Carsbad, NM

12. County or Parish

Eddy

13. State

NM

15. Distance from proposed* location to
nearest property or lease line, ft. (Also to
nearest drig. unit line if any)

330'

16. No of acres in lease
NM041645=440 acres
NM041424=1280 acres

1280.48

17. Spacing Unit dedicated to this well

160

18. Distance from proposed* location to
nearest well, drilling, completed,
applied for, on this lease, ft.

977'

19. Proposed Depth
Pilot Hole TD: N/A
12,383 MD 7,258 TVD

20. BLM/BIA Bond No. on File

NM2575; NMB000835

21. Elevations (Show whether DF, KDB, RT, GL, etc.)

3276 GR

22. Approximate date work will start*

1/1/14

23. Estimated duration

35 days

RECEIVED

DEC 09 2013

NMOCD ARTESIA

24. Attachments

Cannot produce until in compliance
w/ NMOCD Rule 5.9

The following, completed in accordance with the requirements of Onshore Oil and Gas Order No. 1, shall be attached to this form:

1. Well plat certified by a registered surveyor
2. A Drilling Plan
3. A Surface Use Plan (if the location is on National Forest System Lands, the SUPO shall be filed with the appropriate Forest Service Office).
4. Bond to cover the operations unless covered by an existing bond on file (see Item 20 above).
5. Operator Certification
6. Such other site specific information and/or plans as may be required by the authorized officer.

25. Signature

Paula Brunson

Name (Printed/Typed)

Paula Brunson

Date

9/27/13

Title

Regulatory Compliance

Approved By (Signature) /s/ James Stovall

Name (Printed/Typed)

Date

DEC - 5 2013

Title

FIELD MANAGER

Office

CARLSBAD FIELD OFFICE

Application approval does not warrant or certify that the applicant holds legal or equitable title to those rights in the subject lease which would entitle the applicant to
conduct operations thereon.

Conditions of approval, if any, are attached.

APPROVAL FOR TWO YEARS

Title 18 U.S.S. Section 1001 and Title 43 U.S.C. Section 1212, make it a crime for any person knowingly and willfully to make to any department or agency of the United
States any false, fictitious, or fraudulent statements or representations as to any matter within its jurisdiction.

(Continued on page 2)

*(Instructions on page 2)

Carlsbad Controlled Water Basin

Approval Subject to General Requirements
& Special Stipulations AttachedSEE ATTACHED FOR
CONDITIONS OF APPROVAL

Operator Certification Statement

Marquardt Federal #11H

Cimarex Energy Co.

UL: C, Sec. 13, 25S, 26E

Eddy Co., NM

Operator's Representative

Cimarex Energy Co. of Colorado

600 N. Marienfeld St., Ste. 600

Midland, TX 79701

Office Phone: (432) 571-7800

CERTIFICATION: I hereby certify that I, or someone under my direct supervision, have inspected the drill site and access route proposed herein; that I am familiar with the conditions which currently exist; that I have full knowledge of state and Federal laws applicable to this operation; that the statements made in this APD package are, to the best of my knowledge, true and correct; and that the work associated with the operations proposed herein will be performed in conformity with this APD package and the terms and conditions under which it is approved. I also certify that I, or the company I represent, am responsible for the operations conducted under this application. These statements are subject to the provisions of 18 U.S.C. 1001 for the filing of false statements.

Executed this 27 day of September, 2013

NAME: Paula Brunson

Paula Brunson

TITLE: Regulatory Compliance

ADDRESS: 600 N. Marienfeld St. Ste. 600 Midland Tx 79071

TELEPHONE: 432-571-7800

EMAIL: pbrunson@cimarex.com

Field Representative: Same as above

DISTRICT I
1625 N. French Dr., Hobbs, NM 88240
Phone (575) 393-6161 Fax: (575) 393-0720

DISTRICT II
811 S. First St., Artesia, NM 88210
Phone (575) 748-1263 Fax: (575) 748-9720

DISTRICT III
1000 Rio Brazos Rd., Aztec, NM 87410
Phone (505) 834-6178 Fax: (505) 334-6170

DISTRICT IV
1220 S. St. Francis Dr., Santa Fe, NM 87505
Phone (505) 476-3450 Fax: (505) 476-3462

State of New Mexico
Energy, Minerals and Natural Resources Department

Form C-102
Revised August 1, 2011

Submit one copy to appropriate
District Office

OIL CONSERVATION DIVISION

1220 South St. Francis Dr.
Santa Fe, New Mexico 87505

WELL LOCATION AND ACREAGE DEDICATION PLAT

☐ AMENDED REPORT

| | | |
|--------------------------------|-------------------------------------|----------------------------------|
| API Number 30-025-015-41849 | Pool Code 97494 | Pool Name Bone Spring Wildcat |
| Property Code 37374 | Property Name MARQUARDT FEDERAL | Well Number 11H |
| GRID No. 162683 | Operator Name CIMAREX ENERGY CO. | Elevation 3276 |

Surface Location

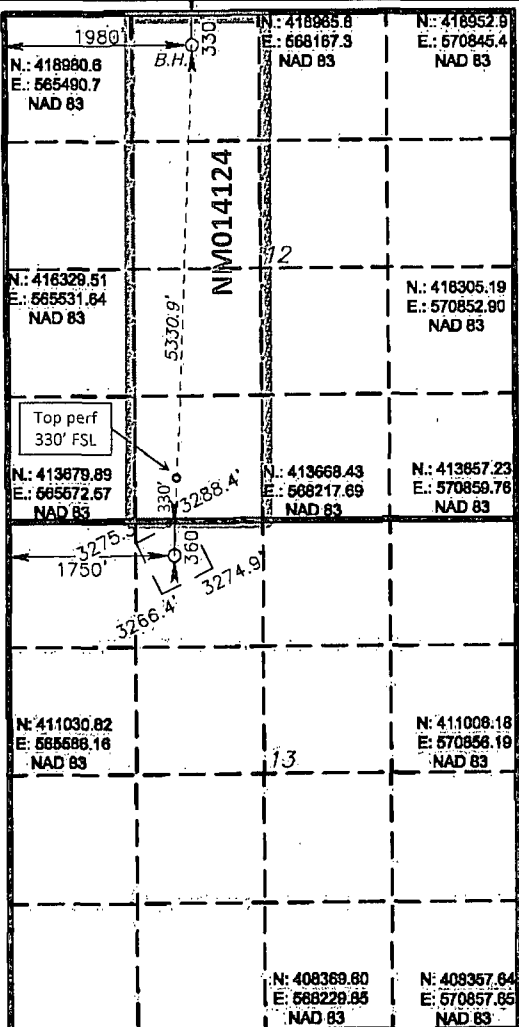
| UL or lot No. | Section | Township | Range | Lot Idn | Feet from the | North/South line | Feet from the | East/West line | County |
|---------------|---------|----------|-------|---------|---------------|------------------|---------------|----------------|--------|
| C | 13 | 25 S | 26 E | | 360 | NORTH | 1750 | WEST | EDDY |

Bottom Hole Location If Different From Surface

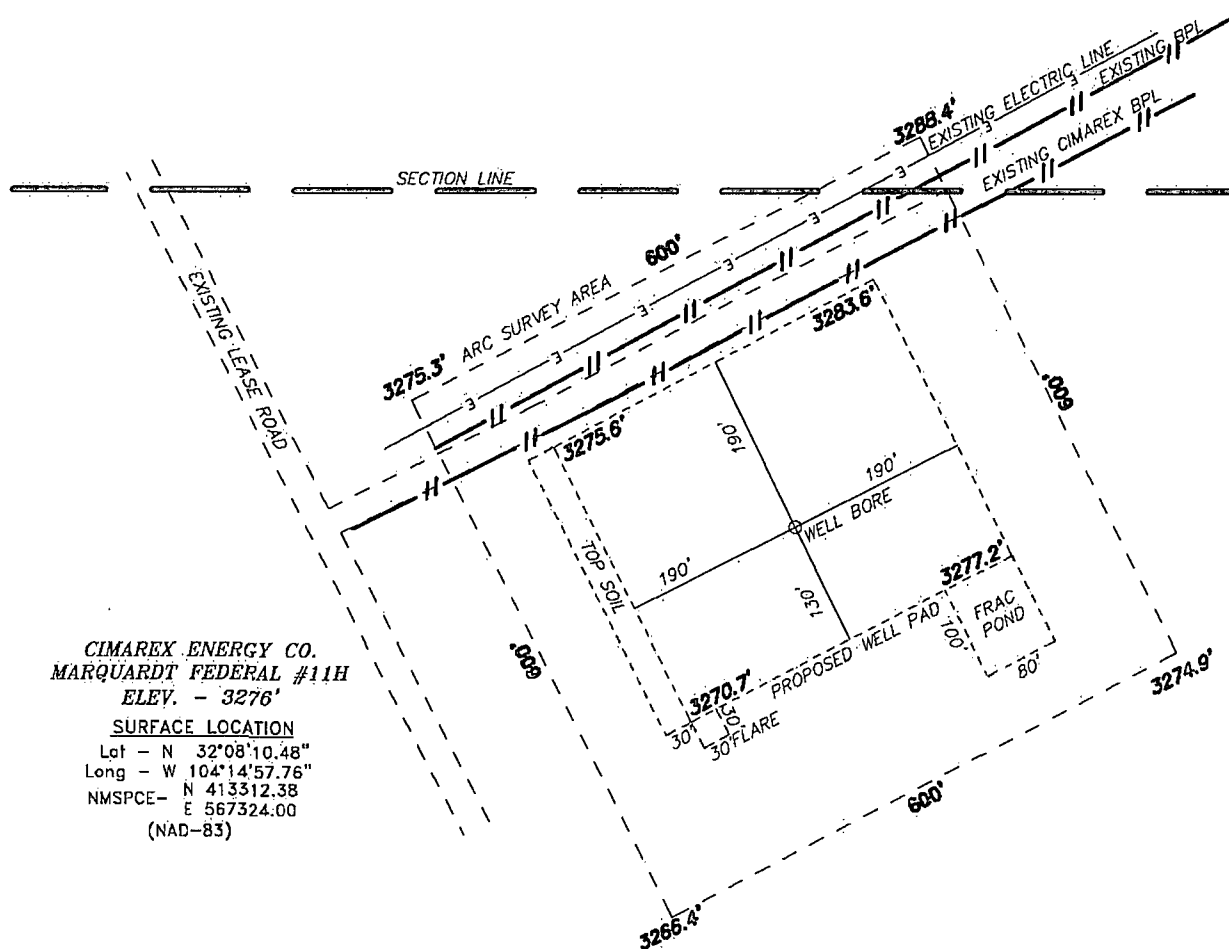
| UL or lot No. | Section | Township | Range | Lot Idn | Feet from the | North/South line | Feet from the | East/West line | County |
|---------------|---------|----------|-------|---------|---------------|------------------|---------------|----------------|--------|
| C | 12 | 25 S | 26 E | | 330 | NORTH | 1980 | WEST | EDDY |

| | | | |
|------------------------|-----------------|--------------------|-----------|
| Dedicated Acres 160 | Joint or Infill | Consolidation Code | Order No. |
|------------------------|-----------------|--------------------|-----------|

NO ALLOWABLE WILL BE ASSIGNED TO THIS COMPLETION UNTIL ALL INTERESTS HAVE BEEN CONSOLIDATED
OR A NON-STANDARD UNIT HAS BEEN APPROVED BY THE DIVISION

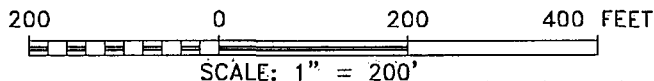
| | | |
|--|---|---|
| <p>PROPOSED BOTTOM HOLE LOCATION Lot - N 32°09'03.20" Long - W 104°14'55.95" NMSPCE- N 418639.80 E 567475.25 (NAD-83)</p> |  | <p>OPERATOR CERTIFICATION I hereby certify that the information contained herein is true and complete to the best of my knowledge and belief, and that this organization either owns a working interest or unleased mineral interest in the land including the proposed bottom hole location or has a right to drill this well at this location pursuant to a contract with an owner of such a mineral or working interest, or to a voluntary pooling agreement or a compulsory pooling order heretofore entered by the division. Paula Brunson 9/27/2013 Signature Date Paula Brunson Printed Name pbrunson@cimarex.com Email Address</p> |
| <p>SURFACE LOCATION Lot - N 32°08'10.48" Long - W 104°14'57.76" NMSPCE- N 413312.38 E 567324.00 (NAD-83)</p> | | <p>SURVEYOR CERTIFICATION I hereby certify that the well location shown on this plat was plotted from field notes of actual surveys made by me or under my supervision, and that the same is true and correct to the best of my belief. Date Surveyed Signature of Professional Surveyor Certificate No. 7977 BASIN SURVEYS 28763</p> |

**SECTION 13, TOWNSHIP 25 SOUTH, RANGE 26 EAST, N.M.P.M.,
EDDY COUNTY, NEW MEXICO.**



CIMAREX ENERGY CO.
MARQUARDT FEDERAL #11H
ELEV. - 3276'
SURFACE LOCATION
Lat - N 32°08'10.48"
Long - W 104°14'57.76"
NMSPCE- N 413312.38
E 567324.00
(NAD-83)

WELL IS 18 MILES SOUTH OF CARLSBAD NEW MEXICO



Directions to Location:

FROM THE JUNCTION OF JOHN D FOREHAND AND BLACK RIVER VILLAGE, GO SOUTH ON JOHN D FOREHAND FOR 4.0 MILES TURN WEST GO 3.4 MILES VEERING SOUTH, CONTINUE 1 MILE TO PROPOSED LOCATION.

BASIN SURVEYS P.O. BOX 1786-HOBBS, NEW MEXICO

W.O. Number: 28763 Drawn By: **D. JONES**

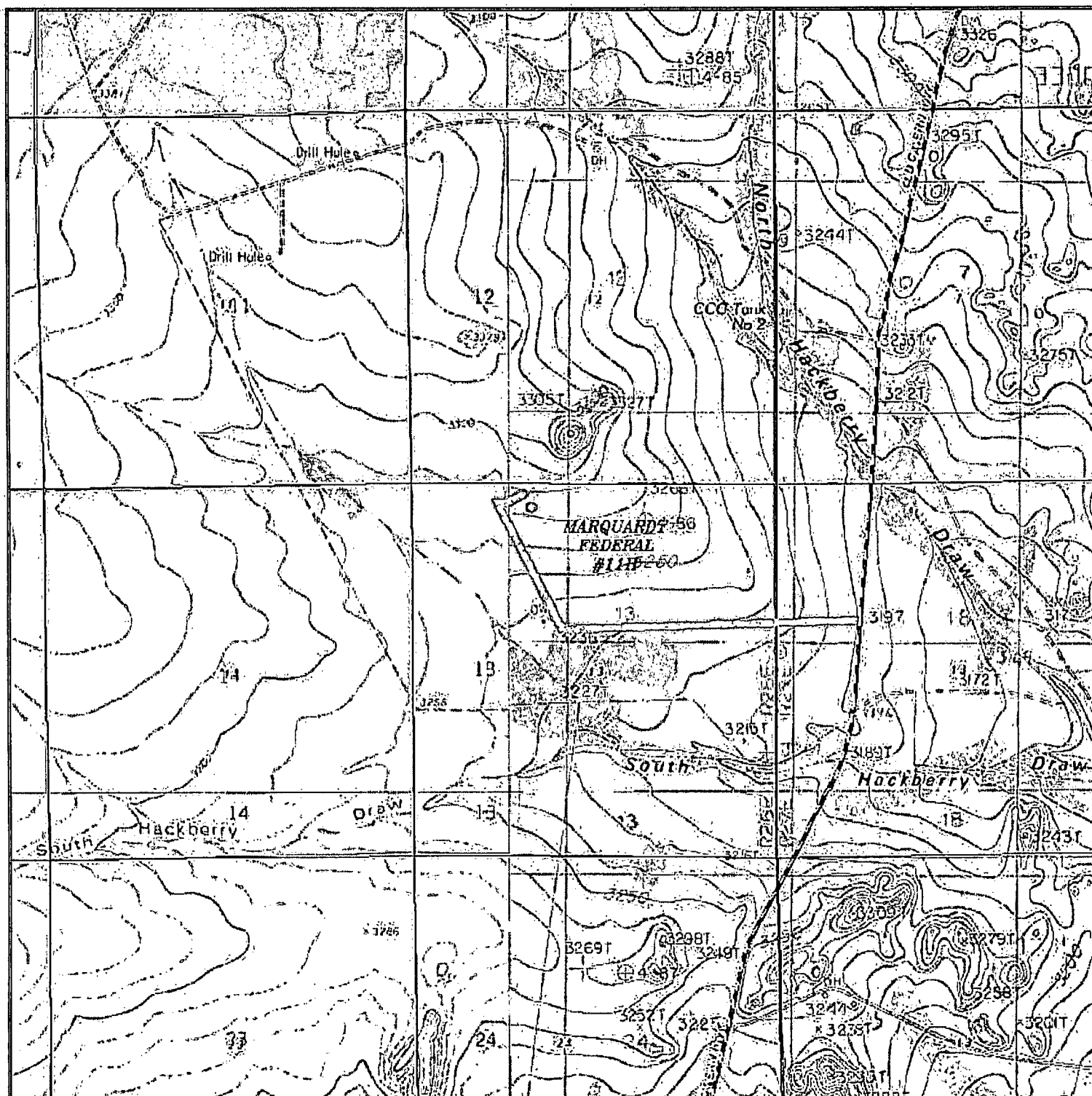
Date: 06-24-2013 Disk: DAJ 28763

CIMAREX ENERGY CO.

REF: MARQUARDT FEDERAL #11H / WELL PAD TOPO

THE MARQUARDT FEDERAL #11H LOCATED 360'
FROM THE NORTH LINE AND 1750' FROM THE WEST LINE OF
SECTION 13, TOWNSHIP 25 SOUTH, RANGE 26 EAST,
N.M.P.M., EDDY COUNTY, NEW MEXICO.

Survey Date: 06-17-2013 Sheet 1 of 1 Sheets



MARQUARDT FEDERAL #11H
 Located 360' FNL and 1750' FWL
 Section 13, Township 25 South, Range 26 East,
 N.M.P.M., Eddy County, New Mexico.

basin
surveys
 focused on excellence
 in the oilfield

P.O. Box 1786
 1120 N. West County Rd.
 Hobbs, New Mexico 88241
 (575) 393-7316 - Office
 (575) 392-2206 - Fax
 basin-surveys.com

W.O. Number: DAJ 28763

Survey Date: 06-17-2013

Scale: 1" = 2000'

Date: 06-24-2013

CIMAREX
ENERGY CO.

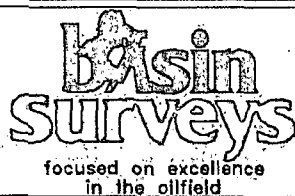
Exhibit C



MARQUARDT FEDERAL #11H

Located 360' FNL and 1750' FWL

Section 13, Township 25 South, Range 26 East,
N.M.P.M., Eddy County, New Mexico.



P.O. Box 1786
1120 N. West County Rd.
Hobbs, New Mexico 88241
(575) 393-7316 - Office
(575) 392-2206 - Fax
basinsurveys.com

W.O. Number: DAJ 28763

Survey Date: 06-17-2013

Scale: 1" = 2 Miles

Date: 06-24-2013

**CIMAREX
ENERGY CO.**

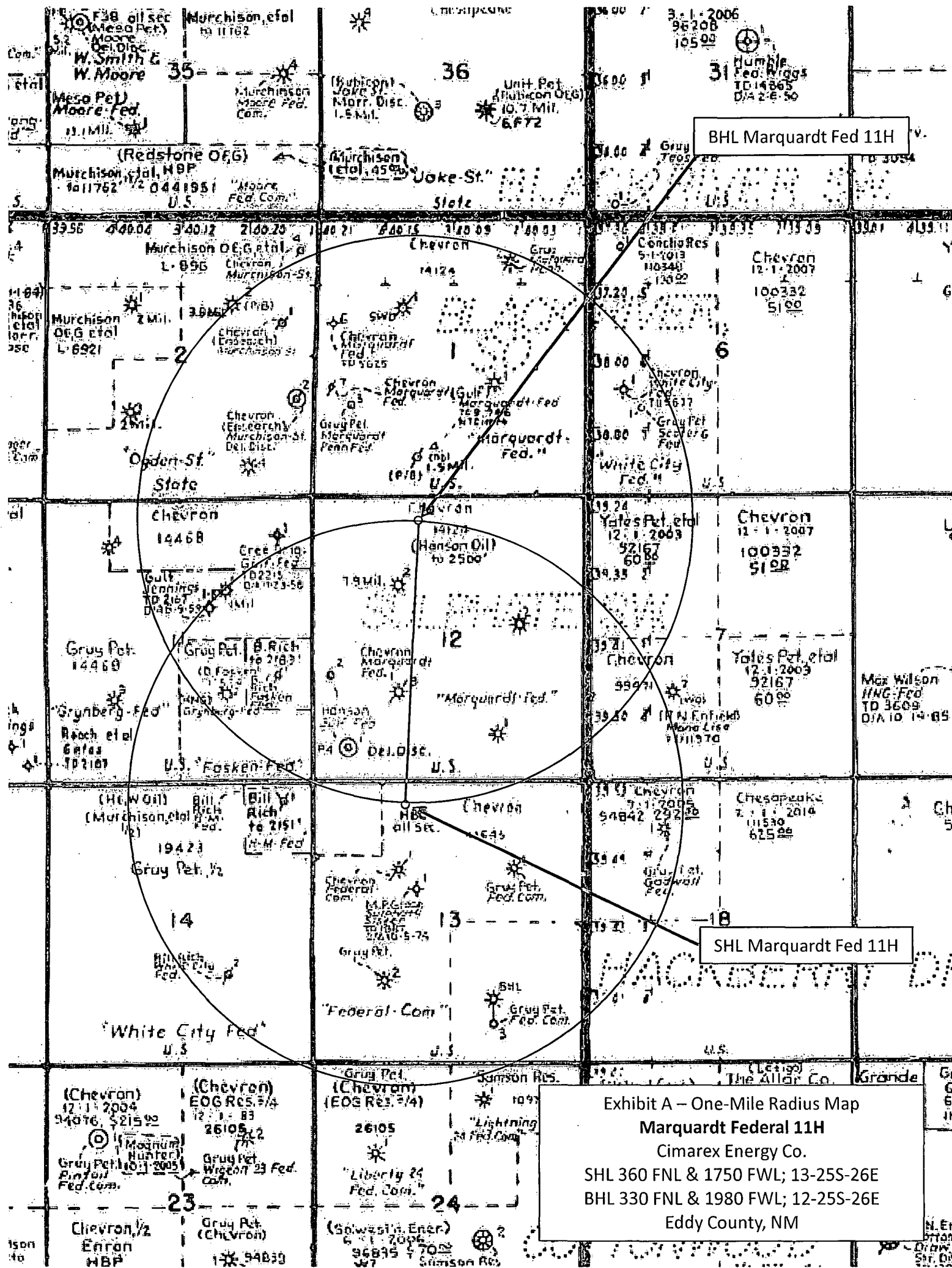
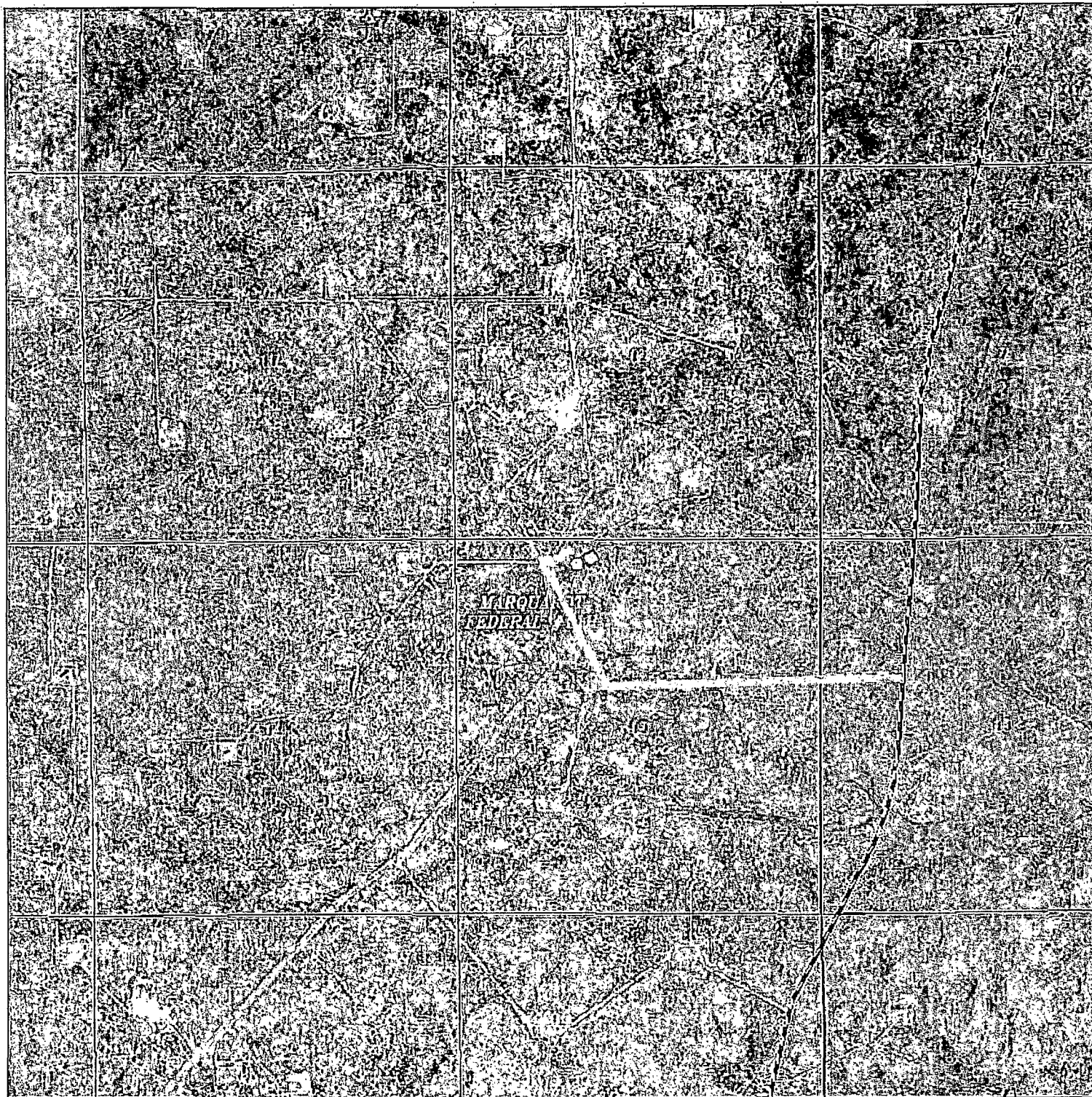


Exhibit A – One-Mile Radius Map
Marquardt Federal 11H
Cimarex Energy Co.
SHL 360 FNL & 1750 FWL; 13-25S-26E
BHL 330 FNL & 1980 FWL; 12-25S-26E
Eddy County, NM

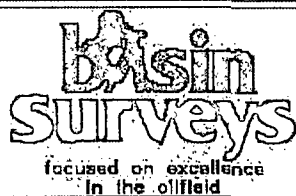


MARQUARDT FEDERAL #11H

☐ Battery

Located 360' FNL and 1750' FWL

Section 13, Township 25 South, Range 26 East,
N.M.P.M., Eddy County, New Mexico.



P.O. Box 1786
1120 N. West County Rd.
Hobbs, New Mexico 88241
(575) 393-7316 - Office
(575) 392-2206 - Fax
basinsurveys.com

W.O. Number: DAJ 28763

Scale: 1" = 2000'

YELLOW TINT - USA LAND
BLUE TINT - STATE LAND
NATURAL COLOR - FEE LAND

**CIMAREX
ENERGY CO.**

Application to Drill
Marquardt Federal #11H
 Cimarex Energy Co.
 UL: C, Sec. 13, 25S, 26E
 Eddy Co., NM

In response to questions asked under Section II B of Bulletin NTL-6, the following information is provided for your consideration:

- 1. Location:** SHL 360 FNL & 1750 FWL: 13-25S-26E
 BHL 330 FNL & 1980 FWL: 12-25S-26E
- 2. Elevation Above Sea Level:** 3,276' GR
- 3. Geologic Name of Surface Formation:** Quaternary Alluvium Deposits
- 4. Drilling Tools and Associated Equipment:** Conventional rotary drilling rig using fluid as a circulating medium for solids removal
- 5. Proposed Drilling Depth:** 12,383 MD 7,258 TVD Pilot Hole TD: N/A
- 6. Estimated Tops of Geological Markers:**

| Formation | Est Top | Bearing |
|-----------------------|---------|--------------|
| Rustler | | 0 N/A |
| Salado (Top Salt) | 1189 | N/A |
| Castille (Base Salt) | 1745 | N/A |
| Bell Canyon | 1943 | Hydrocarbons |
| Cherry Canyon | 2975 | Hydrocarbons |
| Brushy Canyon | 4218 | Hydrocarbons |
| Brushy Canyon Lower | 5132 | N/A |
| Bone Spring | 5451 | N/A |
| Bone Spring "A" Shale | 5576 | Hydrocarbons |
| Bone Spring "C" Shale | 5879 | N/A |
| 1st Bone Spring Ss | 6400 | N/A |
| 2nd Bone Spring Ss | 6917 | Hydrocarbons |
| 2nd BS Ss Horz Target | 7258 | Hydrocarbons |

7. Possible Mineral Bearing Formation: Shown above

7A. OSE Ground Water Estimated Depth: 20'

8. Casing Program:

| Name | Casing Depth From (ft) | Casing Setting Depth (ft) MD | Casing Setting Depth (ft) TVD | Open Hole Size (inches) | Casing Size (inches) | Casing Weight (lb/ft) | Casing Grade | Thread | Condition | BHP (psig) | Anticipated Mud Weight (ppg) | Collapse SF at Full Evacuation (1.125) | Collapse SF at 1/3 Evacuation (1.125) | Burst SF (1.125) | Cumulative Air Weight | Cumulative Buoyed Weight (lbs) | Bouyant Tension SF (1.8) |
|--------------|------------------------|------------------------------|-------------------------------|-------------------------|----------------------|-----------------------|--------------|--------|-----------|------------|------------------------------|--|---------------------------------------|------------------|-----------------------|--------------------------------|--------------------------|
| Surface | 0 | 400 | 400 | 17 1/2 | 13-3/8" | 48.00 | H-40 | ST&C | New | 180 | 8.3 | 4.29 | | 9.61 | 19,200 | 16,767 | 19.20 |
| Intermediate | 0 | 1920 | 1920 | 12 1/4 | 9-5/8" | 36.00 | J-55 | LT&C | New | 864 | 10.0 | | 2.02 | 4.07 | 69,120 | 58,567 | 7.73 |
| Production | 0 | 6780 | 6780 | 8 3/4 | 5-1/2" | 17.00 | L-80 | LT&C | New | 1669 | 9.0 | 1.98 | | 4.64 | 123,386 | 106,432 | 3.18 |
| Production | 6780 | 12383 | 7258 | 8 3/4 | 5-1/2" | 17.00 | L-80 | BT&C | New | 3266 | 9.0 | 1.85 | | 2.37 | 8,126 | 7,009 | 56.64 |

Application to Drill
Marquardt Federal #11H
 Cimarex Energy Co.
 UL: C, Sec. 13, 25S, 26E
 Eddy Co., NM

8A. Casing Design and Casing Loading Assumptions:

| | | |
|--------------|----------|---|
| Surface | Tension | A 1.8 design factor with effects of buoyancy: 8.30 ppg. |
| | Collapse | A 1.125 design factor with full internal evacuation and a collapse force equal to a 8.30 ppg mud gradient. |
| | Burst | A 1.125 design with a surface pressure equal to the fracture gradient at setting depth less gas gradient to surface. |
| Intermediate | Tension | A 1.8 design factor with effects of buoyancy: 10.00 ppg. |
| | Collapse | A 1.125 design factor evacuated 1/3 TVD of next casing string with a collapse force equal to a 10.00 ppg mud gradient. |
| | Burst | A 1.125 design with a surface pressure equal to the fracture gradient at setting depth less gas gradient to surface. |
| Production | Tension | A 1.8 design factor with effects of buoyancy: 9.00 ppg. |
| | Collapse | A 1.125 design factor with full internal evacuation of next casing string with a collapse force equal to a 9.00 ppg mud gradient. |
| | Burst | A 1.125 design with a surface pressure equal to the fracture gradient at setting depth less gas gradient to surface. |

9. Cementing Program:

| Casing Type | Type | Sacks | Yield | Weight | Cubic Feet | Cement Blend |
|--------------|-----------|-------|------------|--------|------------|--|
| Surface | Lead | 79 | 1.75 | 13.50 | 138 | Class C + Bentonite + Calcium Chloride + LCM, 8.829 gps water |
| | Tail | 195 | 1.34 | 14.80 | 260 | Class C + LCM, 6.32 gps water |
| | TOC: 0 | | 44% Excess | | | Centralizers per Onshore Order 2.III.B.1f |
| Intermediate | Lead | 446 | 1.88 | 12.90 | 837 | 35:65 (poz/C) + Salt + Bentonite + LCM + retarder, 9.65 gps water |
| | Tail | 112 | 1.34 | 14.80 | 150 | Class C + retarder + LCM, 6.32 gps water |
| | TOC: 0 | | 82% Excess | | | |
| Production | Lead | 595 | 2.40 | 11.90 | 1428 | 35:65 (poz/H) + salt + Sodium Metasilicate + Bentonite + Fluid Loss + Dispersant + LCM + Retarder, 13.80 gps water |
| | Tail | 1555 | 1.24 | 14.50 | 1928 | 50:50 (poz/H) + Bentonite + Salt + Fluid Loss + Dispersant + LCM + Retarder, 5.55 gps water |
| | TOC: 1720 | | 25% Excess | | | No centralizers planned in the lateral section. 1 every jt from EOC to KOP. 1 every 4th joint from KOP to 500' inside previous casing. |

Cement volumes will be adjusted depending on hole size

9a. Proposed Drilling Plan:

Pilot Hole TD: No Pilot KOP: 6,780' EOC: 7,531'

Set Surface and Intermediate casing strings. Drill production hole to KOP. Continue drilling lateral through the curve to TD. Run prod casing & cement.

10. Pressure Control Equipment:

Exhibit "E-1". A BOP consisting of two rams with blind rams and pipe rams, and one annular preventer. Below the surface casing, a 2M system will be used. Below the intermediate casing, a 3M system will be used. See attachments for BOP and choke manifold diagrams. An accumulator that meets the requirements in Onshore Order #2 for the pressure rating of the BOP stack. A Rotating head may be installed as needed. A kelly cock will be installed and maintained in operable condition and a drill string safety valve in the open position will be available on the rig floor.

BOP and associated equipment will be installed, used, maintained, and tested in a manner necessary to assure well control and shall be in place and operational prior to drilling the surface casing shoe. The Annular Preventer shall be functioned at least weekly. The pipe and blind rams will be operated each trip. No abnormal pressure or temperature is expected while drilling.

BOPS will be tested by an independent service company. The ram preventers, choke manifold, and safety valves will be tested as follows: On the surface casing, pressure tests will be made to 250 psi low and 2000 psi high. On the intermediate casing, pressure tests will be made to 250 psi low and 3000 psi high.

The Annular Preventer will be tested to 250 psi low and 1000 psi high on the surface casing, and 250 low and 1500 high on the intermediate casing.

See COA Cimarex Energy Co. of Colorado requests a variance to drill this well using a co-flex line between the BOP and choke manifold. Certification for proposed co-flex hose is attached (please see Exhibit F, F-1, F-2, F-3). The hose is not required by the manufacturer to be anchored. In the event the specific hose is not available, one of equal or higher rating will be used.

Application to Drill
Marquardt Federal #11H
Cimarex Energy Co.
UL: C, Sec. 13, 25S, 26E
Eddy Co., NM

11. Proposed Mud Circulating System:

| Depth | Mud Weight | Visc | Fluid Loss | Type Mud |
|-----------------|------------|-------|------------|--------------|
| 0' to 400' | 8.30 | 28 | NC | FW Spud Mud |
| 400' to 1920' | 10.00 | 30-32 | NC | Brine Water |
| 1920' to 12383' | 9.00 | 30-32 | NC | FW/Cut Brine |

Sufficient mud materials will be kept on location at all times in order to combat lost circulation or unexpected kicks. In order to run DSTs, open hole logs, and casing, the viscosity and water loss may have to be adjusted in order to meet these needs.

The Mud Monitoring System is an electronic Pason System satisfying requirements of Onshore Order 1.

12. Testing, Logging and Coring Program:

- A. Mud logging program: 2 man unit from 1920 to TD
- B. Electric logging program: CNL / LDT / CAL / GR, DLL /GR -- Inter. Csg to TD
CNL /GR -- Surf to Inter. Csg
- C. No DSTs or cores are planned at this time
- D. CBL w/ CCL from as far as gravity will let it fall to TOC

13. Potential Hazards:

See COA
No abnormal pressures or temperatures are expected. In accordance with Onshore Order 6, Cimarex does not anticipate that there will be enough H₂S from the surface to the Bone Spring formations to meet the BLM's minimum requirements for the submission of an "H₂S Drilling Operation Plan" or "Public Protection Plan" for the drilling and completion of this well. Since we have an H₂S Safety package on all wells, attached is an "H₂S Drilling Operations Plan." Adequate flare lines will be installed off the mud / gas separator where gas may be flared safely. All personnel will be familiar with all aspects of safe operation of equipment being used.

Estimated BHP: 3267 psi

Estimated BHT: 138°

14. Construction and Drilling:

Road and location construction will begin after BLM approval of APD. Anticipated spud date as soon as approved.

Drilling expected to take: 35 days.

If production casing is run an additional 30 days will be required to complete and construct surface facilities.

15. Other Facets of Operations:

If production casing is run an additional 30 days will be required to complete and construct surface facilities.

2nd Bone Spring Ss pay will be perforated and stimulated.

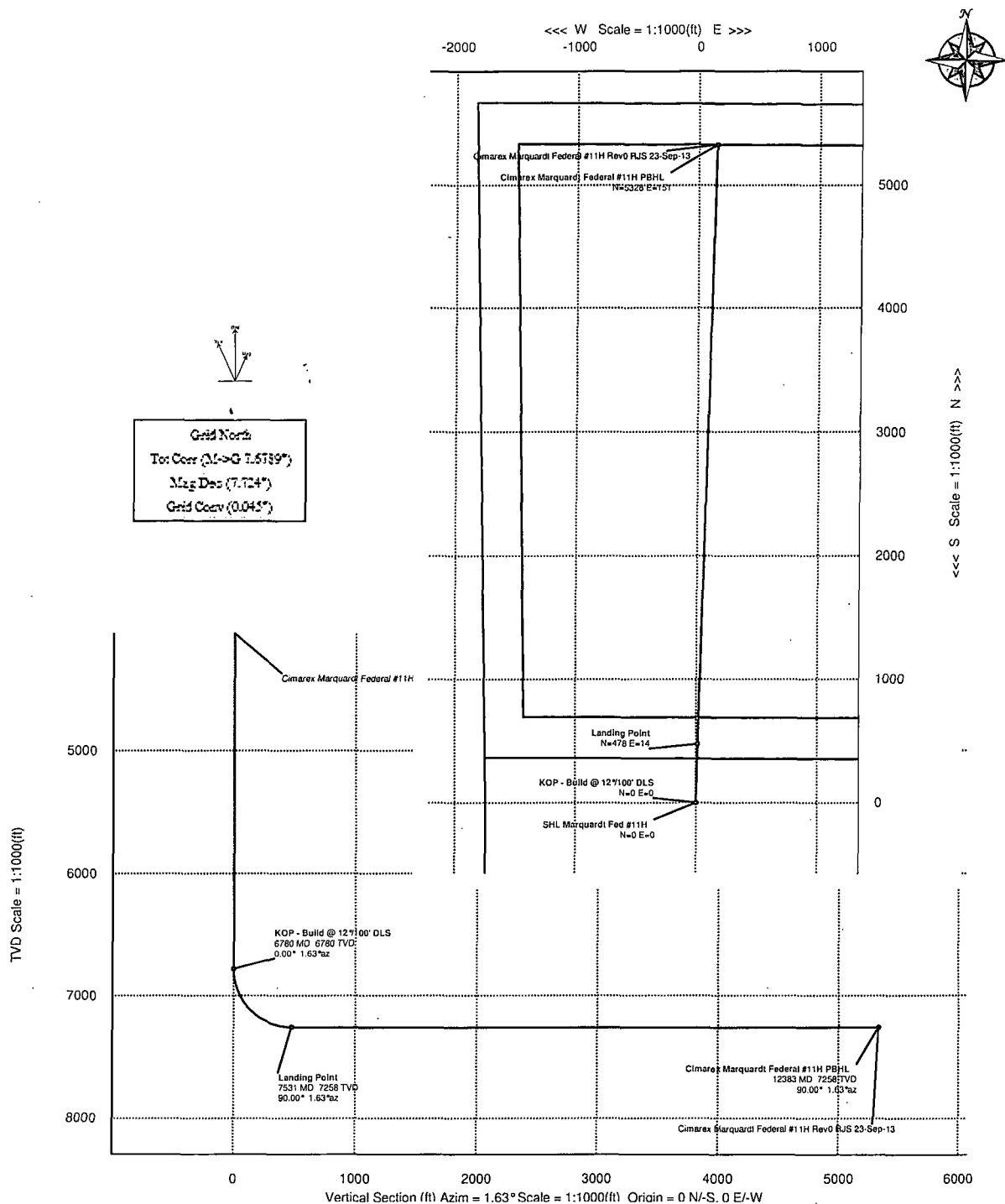
The proposed well will be tested and potential as **Oil**



Cimarex

PATHFINDER
A Schlumberger Company

| | | | | | | | | |
|---------------------|------------------------|---------------|--------------------------|----------------------|---|-----------------------|------------------------------|------------------------------------|
| WELL | Marquardt Federal #11H | | FIELD | NM Eddy County | | STRUCTURE | TBD | |
| Magnetic Parameters | Model: BOGM 2013 | Dip: 50.815° | Date: September 23, 2013 | Surface Location | NAD83 New Mexico State Plane, Eastern Zone, US Foot | Miscellaneous | | |
| | Mag Dec: 7.724° | PS: 48340.3mT | | Lat: N 32 5 10.488 | North: 41312.38 RJUS | Grid Conv: 0.045° | Plot: Marquardt Federal #11H | TVD Ref: Ground Level (27ft above) |
| | | | | Lon: W 104 14 57.763 | East: 567324.60 RJUS | Scale Fact: 0.9999998 | Rev: RJUS 23-Sep-13 | Draw Date: September 23, 2013 |



Critical Points

| Critical Point | MD | INCL | AZIM | TVD | VSEC | N(+)/S(-) | E(+)/W(-) | DLS |
|--|----------|-------|------|---------|---------|-----------|-----------|-------|
| SHL Marquardt 1 Fed #11H | 0.00 | 0.00 | 1.63 | 0.00 | 0.00 | 0.00 | 0.00 | |
| KOP - Build @ 12°/100' DLS | 6780.00 | 0.00 | 1.63 | 6780.00 | 0.00 | 0.00 | 0.00 | 0.00 |
| Landing Point | 7530.84 | 90.00 | 1.63 | 7258.00 | 478.00 | 477.81 | 13.56 | 11.99 |
| Cimarex Marquardt 1 Federal #11H PBHL | 12382.90 | 90.00 | 1.63 | 7258.00 | 5330.06 | 5327.91 | 151.26 | 0.00 |



Cimarex Marquardt Federal #11H Rev0 RJS 23-Sep-13 Proposal Report 100'
Interpolated
(Non-Def Plan)



Report Date: September 23, 2013 - 03:10 PM
Client: Cimarex
Field: NM Eddy County (NAD 83)
Structure / Slot: TBD / Cimarex Marquardt Federal #11H
Well: Cimarex Marquardt Federal #11H
Borehole: Original Borehole
UWI / API#: Unknown / Unknown
Survey Name: Cimarex Marquardt Federal #11H Rev0 RJS 23-Sep-13
Survey Date: September 23, 2013
Tort / AHD / DDI / ERD Ratio: 90.001 ° / 5330.058 ft / 5.913 / 0.734
Coordinate Reference System: NAD83 New Mexico State Plane, Eastern Zone, US Feet
Location Lat / Long: N 32° 8' 10.48801", W 104° 14' 57.76193"
Location Grid N/E Y/X: N 413312.380 ftUS, E 567324.000 ftUS
CRS Grid Convergence Angle: 0.0447 °
Grid Scale Factor: 0.99990986

Survey / DLS Computation: Minimum Curvature / Lubinski
Vertical Section Azimuth: 1.626 ° (Grid North)
Vertical Section Origin: 0.000 ft, 0.000 ft
TVD Reference Datum: Ground Level
TVD Reference Elevation: 3276.000 ft above
Seabed / Ground Elevation: 3276.000 ft above
Magnetic Declination: 7.724 °
Total Gravity Field Strength: 998.4923mgn (9.80665 Based)
Total Magnetic Field Strength: 48240.330 nT
Magnetic Dip Angle: 59.915 °
Declination Date: September 23, 2013
Magnetic Declination Model: BGGM 2013
North Reference: Grid North
Grid Convergence Used: 0.0447 °
Total Corr Mag North->Grid North: 7.6789 °
Local Coord Referenced To: Structure Reference Point

| Comments | MD (ft) | Incl (°) | Azim Grid (°) | TVD (ft) | VSEC (ft) | NS (ft) | EW (ft) | Northing (ftUS) | Easting (ftUS) | Latitude (N/S ° ' ") | Longitude (E/W ° ' ") | Closure (ft) | Closure Azimuth (°) | DLS (°/100ft) |
|---------------------------|------------|-------------|------------------|-------------|--------------|------------|------------|--------------------|-------------------|-------------------------|--------------------------|-----------------|------------------------|------------------|
| SHL Marquardt Fed #11H | 0.00 | 0.00 | 1.63 | 0.00 | 0.00 | 0.00 | 0.00 | 413312.38 | 567324.00 | N 32 8 10.49 | W 104 14 57.76 | 0.00 | 0.00 | N/A |
| | 100.00 | 0.00 | 1.63 | 100.00 | 0.00 | 0.00 | 0.00 | 413312.38 | 567324.00 | N 32 8 10.49 | W 104 14 57.76 | 0.00 | 0.00 | 0.00 |
| | 200.00 | 0.00 | 1.63 | 200.00 | 0.00 | 0.00 | 0.00 | 413312.38 | 567324.00 | N 32 8 10.49 | W 104 14 57.76 | 0.00 | 0.00 | 0.00 |
| | 300.00 | 0.00 | 1.63 | 300.00 | 0.00 | 0.00 | 0.00 | 413312.38 | 567324.00 | N 32 8 10.49 | W 104 14 57.76 | 0.00 | 0.00 | 0.00 |
| | 400.00 | 0.00 | 1.63 | 400.00 | 0.00 | 0.00 | 0.00 | 413312.38 | 567324.00 | N 32 8 10.49 | W 104 14 57.76 | 0.00 | 0.00 | 0.00 |
| | 500.00 | 0.00 | 1.63 | 500.00 | 0.00 | 0.00 | 0.00 | 413312.38 | 567324.00 | N 32 8 10.49 | W 104 14 57.76 | 0.00 | 0.00 | 0.00 |
| | 600.00 | 0.00 | 1.63 | 600.00 | 0.00 | 0.00 | 0.00 | 413312.38 | 567324.00 | N 32 8 10.49 | W 104 14 57.76 | 0.00 | 0.00 | 0.00 |
| | 700.00 | 0.00 | 1.63 | 700.00 | 0.00 | 0.00 | 0.00 | 413312.38 | 567324.00 | N 32 8 10.49 | W 104 14 57.76 | 0.00 | 0.00 | 0.00 |
| | 800.00 | 0.00 | 1.63 | 800.00 | 0.00 | 0.00 | 0.00 | 413312.38 | 567324.00 | N 32 8 10.49 | W 104 14 57.76 | 0.00 | 0.00 | 0.00 |
| | 900.00 | 0.00 | 1.63 | 900.00 | 0.00 | 0.00 | 0.00 | 413312.38 | 567324.00 | N 32 8 10.49 | W 104 14 57.76 | 0.00 | 0.00 | 0.00 |
| | 1000.00 | 0.00 | 1.63 | 1000.00 | 0.00 | 0.00 | 0.00 | 413312.38 | 567324.00 | N 32 8 10.49 | W 104 14 57.76 | 0.00 | 0.00 | 0.00 |
| | 1100.00 | 0.00 | 1.63 | 1100.00 | 0.00 | 0.00 | 0.00 | 413312.38 | 567324.00 | N 32 8 10.49 | W 104 14 57.76 | 0.00 | 0.00 | 0.00 |
| | 1200.00 | 0.00 | 1.63 | 1200.00 | 0.00 | 0.00 | 0.00 | 413312.38 | 567324.00 | N 32 8 10.49 | W 104 14 57.76 | 0.00 | 0.00 | 0.00 |
| | 1300.00 | 0.00 | 1.63 | 1300.00 | 0.00 | 0.00 | 0.00 | 413312.38 | 567324.00 | N 32 8 10.49 | W 104 14 57.76 | 0.00 | 0.00 | 0.00 |
| | 1400.00 | 0.00 | 1.63 | 1400.00 | 0.00 | 0.00 | 0.00 | 413312.38 | 567324.00 | N 32 8 10.49 | W 104 14 57.76 | 0.00 | 0.00 | 0.00 |
| | 1500.00 | 0.00 | 1.63 | 1500.00 | 0.00 | 0.00 | 0.00 | 413312.38 | 567324.00 | N 32 8 10.49 | W 104 14 57.76 | 0.00 | 0.00 | 0.00 |
| | 1600.00 | 0.00 | 1.63 | 1600.00 | 0.00 | 0.00 | 0.00 | 413312.38 | 567324.00 | N 32 8 10.49 | W 104 14 57.76 | 0.00 | 0.00 | 0.00 |
| | 1700.00 | 0.00 | 1.63 | 1700.00 | 0.00 | 0.00 | 0.00 | 413312.38 | 567324.00 | N 32 8 10.49 | W 104 14 57.76 | 0.00 | 0.00 | 0.00 |
| | 1800.00 | 0.00 | 1.63 | 1800.00 | 0.00 | 0.00 | 0.00 | 413312.38 | 567324.00 | N 32 8 10.49 | W 104 14 57.76 | 0.00 | 0.00 | 0.00 |
| | 1900.00 | 0.00 | 1.63 | 1900.00 | 0.00 | 0.00 | 0.00 | 413312.38 | 567324.00 | N 32 8 10.49 | W 104 14 57.76 | 0.00 | 0.00 | 0.00 |
| | 2000.00 | 0.00 | 1.63 | 2000.00 | 0.00 | 0.00 | 0.00 | 413312.38 | 567324.00 | N 32 8 10.49 | W 104 14 57.76 | 0.00 | 0.00 | 0.00 |
| | 2100.00 | 0.00 | 1.63 | 2100.00 | 0.00 | 0.00 | 0.00 | 413312.38 | 567324.00 | N 32 8 10.49 | W 104 14 57.76 | 0.00 | 0.00 | 0.00 |
| | 2200.00 | 0.00 | 1.63 | 2200.00 | 0.00 | 0.00 | 0.00 | 413312.38 | 567324.00 | N 32 8 10.49 | W 104 14 57.76 | 0.00 | 0.00 | 0.00 |
| | 2300.00 | 0.00 | 1.63 | 2300.00 | 0.00 | 0.00 | 0.00 | 413312.38 | 567324.00 | N 32 8 10.49 | W 104 14 57.76 | 0.00 | 0.00 | 0.00 |
| | 2400.00 | 0.00 | 1.63 | 2400.00 | 0.00 | 0.00 | 0.00 | 413312.38 | 567324.00 | N 32 8 10.49 | W 104 14 57.76 | 0.00 | 0.00 | 0.00 |
| | 2500.00 | 0.00 | 1.63 | 2500.00 | 0.00 | 0.00 | 0.00 | 413312.38 | 567324.00 | N 32 8 10.49 | W 104 14 57.76 | 0.00 | 0.00 | 0.00 |
| | 2600.00 | 0.00 | 1.63 | 2600.00 | 0.00 | 0.00 | 0.00 | 413312.38 | 567324.00 | N 32 8 10.49 | W 104 14 57.76 | 0.00 | 0.00 | 0.00 |
| | 2700.00 | 0.00 | 1.63 | 2700.00 | 0.00 | 0.00 | 0.00 | 413312.38 | 567324.00 | N 32 8 10.49 | W 104 14 57.76 | 0.00 | 0.00 | 0.00 |
| | 2800.00 | 0.00 | 1.63 | 2800.00 | 0.00 | 0.00 | 0.00 | 413312.38 | 567324.00 | N 32 8 10.49 | W 104 14 57.76 | 0.00 | 0.00 | 0.00 |

| Comments | MD (ft) | Incl (°) | Azim Grid (°) | TVD (ft) | VSEC (ft) | NS (ft) | EW (ft) | Northing (ftUS) | Easting (ftUS) | Latitude (N/S ° ' '') | Longitude (E/W ° ' '') | Closure (ft) | Closure Azimuth (°) | DLS (°/100ft) |
|-------------------------------|------------|-------------|------------------|-------------|--------------|------------|------------|--------------------|-------------------|--------------------------|---------------------------|-----------------|------------------------|------------------|
| | 2900.00 | 0.00 | 1.63 | 2900.00 | 0.00 | 0.00 | 0.00 | 413312.38 | 567324.00 | N 32 8 10.49 | W 104 14 57.76 | 0.00 | 0.00 | 0.00 |
| | 3000.00 | 0.00 | 1.63 | 3000.00 | 0.00 | 0.00 | 0.00 | 413312.38 | 567324.00 | N 32 8 10.49 | W 104 14 57.76 | 0.00 | 0.00 | 0.00 |
| | 3100.00 | 0.00 | 1.63 | 3100.00 | 0.00 | 0.00 | 0.00 | 413312.38 | 567324.00 | N 32 8 10.49 | W 104 14 57.76 | 0.00 | 0.00 | 0.00 |
| | 3200.00 | 0.00 | 1.63 | 3200.00 | 0.00 | 0.00 | 0.00 | 413312.38 | 567324.00 | N 32 8 10.49 | W 104 14 57.76 | 0.00 | 0.00 | 0.00 |
| | 3300.00 | 0.00 | 1.63 | 3300.00 | 0.00 | 0.00 | 0.00 | 413312.38 | 567324.00 | N 32 8 10.49 | W 104 14 57.76 | 0.00 | 0.00 | 0.00 |
| | 3400.00 | 0.00 | 1.63 | 3400.00 | 0.00 | 0.00 | 0.00 | 413312.38 | 567324.00 | N 32 8 10.49 | W 104 14 57.76 | 0.00 | 0.00 | 0.00 |
| | 3500.00 | 0.00 | 1.63 | 3500.00 | 0.00 | 0.00 | 0.00 | 413312.38 | 567324.00 | N 32 8 10.49 | W 104 14 57.76 | 0.00 | 0.00 | 0.00 |
| | 3600.00 | 0.00 | 1.63 | 3600.00 | 0.00 | 0.00 | 0.00 | 413312.38 | 567324.00 | N 32 8 10.49 | W 104 14 57.76 | 0.00 | 0.00 | 0.00 |
| | 3700.00 | 0.00 | 1.63 | 3700.00 | 0.00 | 0.00 | 0.00 | 413312.38 | 567324.00 | N 32 8 10.49 | W 104 14 57.76 | 0.00 | 0.00 | 0.00 |
| | 3800.00 | 0.00 | 1.63 | 3800.00 | 0.00 | 0.00 | 0.00 | 413312.38 | 567324.00 | N 32 8 10.49 | W 104 14 57.76 | 0.00 | 0.00 | 0.00 |
| | 3900.00 | 0.00 | 1.63 | 3900.00 | 0.00 | 0.00 | 0.00 | 413312.38 | 567324.00 | N 32 8 10.49 | W 104 14 57.76 | 0.00 | 0.00 | 0.00 |
| | 4000.00 | 0.00 | 1.63 | 4000.00 | 0.00 | 0.00 | 0.00 | 413312.38 | 567324.00 | N 32 8 10.49 | W 104 14 57.76 | 0.00 | 0.00 | 0.00 |
| | 4100.00 | 0.00 | 1.63 | 4100.00 | 0.00 | 0.00 | 0.00 | 413312.38 | 567324.00 | N 32 8 10.49 | W 104 14 57.76 | 0.00 | 0.00 | 0.00 |
| | 4200.00 | 0.00 | 1.63 | 4200.00 | 0.00 | 0.00 | 0.00 | 413312.38 | 567324.00 | N 32 8 10.49 | W 104 14 57.76 | 0.00 | 0.00 | 0.00 |
| | 4300.00 | 0.00 | 1.63 | 4300.00 | 0.00 | 0.00 | 0.00 | 413312.38 | 567324.00 | N 32 8 10.49 | W 104 14 57.76 | 0.00 | 0.00 | 0.00 |
| | 4400.00 | 0.00 | 1.63 | 4400.00 | 0.00 | 0.00 | 0.00 | 413312.38 | 567324.00 | N 32 8 10.49 | W 104 14 57.76 | 0.00 | 0.00 | 0.00 |
| | 4500.00 | 0.00 | 1.63 | 4500.00 | 0.00 | 0.00 | 0.00 | 413312.38 | 567324.00 | N 32 8 10.49 | W 104 14 57.76 | 0.00 | 0.00 | 0.00 |
| | 4600.00 | 0.00 | 1.63 | 4600.00 | 0.00 | 0.00 | 0.00 | 413312.38 | 567324.00 | N 32 8 10.49 | W 104 14 57.76 | 0.00 | 0.00 | 0.00 |
| | 4700.00 | 0.00 | 1.63 | 4700.00 | 0.00 | 0.00 | 0.00 | 413312.38 | 567324.00 | N 32 8 10.49 | W 104 14 57.76 | 0.00 | 0.00 | 0.00 |
| | 4800.00 | 0.00 | 1.63 | 4800.00 | 0.00 | 0.00 | 0.00 | 413312.38 | 567324.00 | N 32 8 10.49 | W 104 14 57.76 | 0.00 | 0.00 | 0.00 |
| | 4900.00 | 0.00 | 1.63 | 4900.00 | 0.00 | 0.00 | 0.00 | 413312.38 | 567324.00 | N 32 8 10.49 | W 104 14 57.76 | 0.00 | 0.00 | 0.00 |
| | 5000.00 | 0.00 | 1.63 | 5000.00 | 0.00 | 0.00 | 0.00 | 413312.38 | 567324.00 | N 32 8 10.49 | W 104 14 57.76 | 0.00 | 0.00 | 0.00 |
| | 5100.00 | 0.00 | 1.63 | 5100.00 | 0.00 | 0.00 | 0.00 | 413312.38 | 567324.00 | N 32 8 10.49 | W 104 14 57.76 | 0.00 | 0.00 | 0.00 |
| | 5200.00 | 0.00 | 1.63 | 5200.00 | 0.00 | 0.00 | 0.00 | 413312.38 | 567324.00 | N 32 8 10.49 | W 104 14 57.76 | 0.00 | 0.00 | 0.00 |
| | 5300.00 | 0.00 | 1.63 | 5300.00 | 0.00 | 0.00 | 0.00 | 413312.38 | 567324.00 | N 32 8 10.49 | W 104 14 57.76 | 0.00 | 0.00 | 0.00 |
| | 5400.00 | 0.00 | 1.63 | 5400.00 | 0.00 | 0.00 | 0.00 | 413312.38 | 567324.00 | N 32 8 10.49 | W 104 14 57.76 | 0.00 | 0.00 | 0.00 |
| | 5500.00 | 0.00 | 1.63 | 5500.00 | 0.00 | 0.00 | 0.00 | 413312.38 | 567324.00 | N 32 8 10.49 | W 104 14 57.76 | 0.00 | 0.00 | 0.00 |
| | 5600.00 | 0.00 | 1.63 | 5600.00 | 0.00 | 0.00 | 0.00 | 413312.38 | 567324.00 | N 32 8 10.49 | W 104 14 57.76 | 0.00 | 0.00 | 0.00 |
| | 5700.00 | 0.00 | 1.63 | 5700.00 | 0.00 | 0.00 | 0.00 | 413312.38 | 567324.00 | N 32 8 10.49 | W 104 14 57.76 | 0.00 | 0.00 | 0.00 |
| | 5800.00 | 0.00 | 1.63 | 5800.00 | 0.00 | 0.00 | 0.00 | 413312.38 | 567324.00 | N 32 8 10.49 | W 104 14 57.76 | 0.00 | 0.00 | 0.00 |
| | 5900.00 | 0.00 | 1.63 | 5900.00 | 0.00 | 0.00 | 0.00 | 413312.38 | 567324.00 | N 32 8 10.49 | W 104 14 57.76 | 0.00 | 0.00 | 0.00 |
| | 6000.00 | 0.00 | 1.63 | 6000.00 | 0.00 | 0.00 | 0.00 | 413312.38 | 567324.00 | N 32 8 10.49 | W 104 14 57.76 | 0.00 | 0.00 | 0.00 |
| | 6100.00 | 0.00 | 1.63 | 6100.00 | 0.00 | 0.00 | 0.00 | 413312.38 | 567324.00 | N 32 8 10.49 | W 104 14 57.76 | 0.00 | 0.00 | 0.00 |
| | 6200.00 | 0.00 | 1.63 | 6200.00 | 0.00 | 0.00 | 0.00 | 413312.38 | 567324.00 | N 32 8 10.49 | W 104 14 57.76 | 0.00 | 0.00 | 0.00 |
| | 6300.00 | 0.00 | 1.63 | 6300.00 | 0.00 | 0.00 | 0.00 | 413312.38 | 567324.00 | N 32 8 10.49 | W 104 14 57.76 | 0.00 | 0.00 | 0.00 |
| | 6400.00 | 0.00 | 1.63 | 6400.00 | 0.00 | 0.00 | 0.00 | 413312.38 | 567324.00 | N 32 8 10.49 | W 104 14 57.76 | 0.00 | 0.00 | 0.00 |
| | 6500.00 | 0.00 | 1.63 | 6500.00 | 0.00 | 0.00 | 0.00 | 413312.38 | 567324.00 | N 32 8 10.49 | W 104 14 57.76 | 0.00 | 0.00 | 0.00 |
| | 6600.00 | 0.00 | 1.63 | 6600.00 | 0.00 | 0.00 | 0.00 | 413312.38 | 567324.00 | N 32 8 10.49 | W 104 14 57.76 | 0.00 | 0.00 | 0.00 |
| | 6700.00 | 0.00 | 1.63 | 6700.00 | 0.00 | 0.00 | 0.00 | 413312.38 | 567324.00 | N 32 8 10.49 | W 104 14 57.76 | 0.00 | 0.00 | 0.00 |
| KOP - Build @ 12"/100" DLS | 6780.00 | 0.00 | 1.63 | 6780.00 | 0.00 | 0.00 | 0.00 | 413312.38 | 567324.00 | N 32 8 10.49 | W 104 14 57.76 | 0.00 | 0.00 | 0.00 |
| | 6800.00 | 2.40 | 1.63 | 6799.99 | 0.42 | 0.42 | 0.01 | 413312.80 | 567324.01 | N 32 8 10.49 | W 104 14 57.76 | 0.42 | 1.63 | 11.99 |
| | 6900.00 | 14.38 | 1.63 | 6898.74 | 14.98 | 14.98 | 0.43 | 413327.36 | 567324.43 | N 32 8 10.64 | W 104 14 57.76 | 14.98 | 1.63 | 11.99 |
| | 7000.00 | 26.37 | 1.63 | 6992.31 | 49.74 | 49.72 | 1.41 | 413362.10 | 567325.41 | N 32 8 10.98 | W 104 14 57.75 | 49.74 | 1.63 | 11.99 |
| | 7100.00 | 38.36 | 1.63 | 7076.63 | 103.17 | 103.13 | 2.93 | 413415.50 | 567326.93 | N 32 8 11.51 | W 104 14 57.73 | 103.17 | 1.63 | 11.99 |
| | 7200.00 | 50.34 | 1.63 | 7148.01 | 172.95 | 172.88 | 4.91 | 413485.24 | 567328.91 | N 32 8 12.20 | W 104 14 57.70 | 172.95 | 1.63 | 11.99 |
| | 7300.00 | 62.33 | 1.63 | 7203.33 | 256.03 | 255.93 | 7.26 | 413568.28 | 567331.26 | N 32 8 13.02 | W 104 14 57.68 | 256.03 | 1.63 | 11.99 |
| | 7400.00 | 74.32 | 1.63 | 7240.20 | 348.79 | 348.65 | 9.90 | 413660.99 | 567333.90 | N 32 8 13.94 | W 104 14 57.64 | 348.79 | 1.63 | 11.99 |
| | 7500.00 | 86.30 | 1.63 | 7257.01 | 447.18 | 447.00 | 12.69 | 413759.34 | 567336.69 | N 32 8 14.91 | W 104 14 57.61 | 447.18 | 1.63 | 11.99 |
| Landing Point | 7530.84 | 90.00 | 1.63 | 7258.00 | 478.00 | 477.81 | 13.56 | 413790.14 | 567337.56 | N 32 8 15.22 | W 104 14 57.60 | 478.00 | 1.63 | 11.99 |
| | 7600.00 | 90.00 | 1.63 | 7258.00 | 547.16 | 546.94 | 15.53 | 413859.27 | 567339.52 | N 32 8 15.90 | W 104 14 57.58 | 547.16 | 1.63 | 0.00 |
| | 7700.00 | 90.00 | 1.63 | 7258.00 | 647.16 | 646.90 | 18.36 | 413959.22 | 567342.36 | N 32 8 16.89 | W 104 14 57.54 | 647.16 | 1.63 | 0.00 |
| | 7800.00 | 90.00 | 1.63 | 7258.00 | 747.16 | 746.86 | 21.20 | 414059.17 | 567345.20 | N 32 8 17.88 | W 104 14 57.51 | 747.16 | 1.63 | 0.00 |
| | 7900.00 | 90.00 | 1.63 | 7258.00 | 847.16 | 846.82 | 24.04 | 414159.12 | 567348.04 | N 32 8 18.87 | W 104 14 57.47 | 847.16 | 1.63 | 0.00 |
| | 8000.00 | 90.00 | 1.63 | 7258.00 | 947.16 | 946.78 | 26.88 | 414259.07 | 567350.88 | N 32 8 19.86 | W 104 14 57.44 | 947.16 | 1.63 | 0.00 |

| Comments | MD (ft) | Incl (°) | Azim Grid (°) | TVD (ft) | VSEC (ft) | NS (ft) | EW (ft) | Northing (ftUS) | Easting (ftUS) | Latitude (N/S ° ' ") | Longitude (E/W ° ' ") | Closure (ft) | Closure Azimuth (°) | DLS ("/100ft) |
|--|------------|-------------|------------------|-------------|--------------|------------|------------|--------------------|-------------------|-------------------------|--------------------------|-----------------|------------------------|------------------|
| | 8100.00 | 90.00 | 1.63 | 7258.00 | 1047.16 | 1046.74 | 29.72 | 414359.02 | 567353.71 | N 32 8 20.85 | W 104 14 57.41 | 1047.16 | 1.63 | 0.00 |
| | 8200.00 | 90.00 | 1.63 | 7258.00 | 1147.16 | 1146.70 | 32.55 | 414458.97 | 567356.55 | N 32 8 21.83 | W 104 14 57.37 | 1147.16 | 1.63 | 0.00 |
| | 8300.00 | 90.00 | 1.63 | 7258.00 | 1247.16 | 1246.66 | 35.39 | 414558.92 | 567359.39 | N 32 8 22.82 | W 104 14 57.34 | 1247.16 | 1.63 | 0.00 |
| | 8400.00 | 90.00 | 1.63 | 7258.00 | 1347.16 | 1346.62 | 38.23 | 414658.87 | 567362.23 | N 32 8 23.81 | W 104 14 57.31 | 1347.16 | 1.63 | 0.00 |
| | 8500.00 | 90.00 | 1.63 | 7258.00 | 1447.16 | 1446.58 | 41.07 | 414758.82 | 567365.06 | N 32 8 24.80 | W 104 14 57.27 | 1447.16 | 1.63 | 0.00 |
| | 8600.00 | 90.00 | 1.63 | 7258.00 | 1547.16 | 1546.54 | 43.91 | 414858.77 | 567367.90 | N 32 8 25.79 | W 104 14 57.24 | 1547.16 | 1.63 | 0.00 |
| | 8700.00 | 90.00 | 1.63 | 7258.00 | 1647.16 | 1646.50 | 46.74 | 414958.72 | 567370.74 | N 32 8 26.78 | W 104 14 57.20 | 1647.16 | 1.63 | 0.00 |
| | 8800.00 | 90.00 | 1.63 | 7258.00 | 1747.16 | 1746.46 | 49.58 | 415058.67 | 567373.58 | N 32 8 27.77 | W 104 14 57.17 | 1747.16 | 1.63 | 0.00 |
| | 8900.00 | 90.00 | 1.63 | 7258.00 | 1847.16 | 1846.42 | 52.42 | 415158.63 | 567376.42 | N 32 8 28.76 | W 104 14 57.14 | 1847.16 | 1.63 | 0.00 |
| | 9000.00 | 90.00 | 1.63 | 7258.00 | 1947.16 | 1946.38 | 55.26 | 415258.58 | 567379.25 | N 32 8 29.75 | W 104 14 57.10 | 1947.16 | 1.63 | 0.00 |
| | 9100.00 | 90.00 | 1.63 | 7258.00 | 2047.16 | 2046.33 | 58.10 | 415358.53 | 567382.09 | N 32 8 30.74 | W 104 14 57.07 | 2047.16 | 1.63 | 0.00 |
| | 9200.00 | 90.00 | 1.63 | 7258.00 | 2147.16 | 2146.29 | 60.93 | 415458.48 | 567384.93 | N 32 8 31.73 | W 104 14 57.03 | 2147.16 | 1.63 | 0.00 |
| | 9300.00 | 90.00 | 1.63 | 7258.00 | 2247.16 | 2246.25 | 63.77 | 415558.43 | 567387.77 | N 32 8 32.71 | W 104 14 57.00 | 2247.16 | 1.63 | 0.00 |
| | 9400.00 | 90.00 | 1.63 | 7258.00 | 2347.16 | 2346.21 | 66.61 | 415658.38 | 567390.60 | N 32 8 33.70 | W 104 14 56.97 | 2347.16 | 1.63 | 0.00 |
| | 9500.00 | 90.00 | 1.63 | 7258.00 | 2447.16 | 2446.17 | 69.45 | 415758.33 | 567393.44 | N 32 8 34.69 | W 104 14 56.93 | 2447.16 | 1.63 | 0.00 |
| | 9600.00 | 90.00 | 1.63 | 7258.00 | 2547.16 | 2546.13 | 72.29 | 415858.28 | 567396.28 | N 32 8 35.68 | W 104 14 56.90 | 2547.16 | 1.63 | 0.00 |
| | 9700.00 | 90.00 | 1.63 | 7258.00 | 2647.16 | 2646.09 | 75.12 | 415958.23 | 567399.12 | N 32 8 36.67 | W 104 14 56.86 | 2647.16 | 1.63 | 0.00 |
| | 9800.00 | 90.00 | 1.63 | 7258.00 | 2747.16 | 2746.05 | 77.96 | 416058.18 | 567401.95 | N 32 8 37.66 | W 104 14 56.83 | 2747.16 | 1.63 | 0.00 |
| | 9900.00 | 90.00 | 1.63 | 7258.00 | 2847.16 | 2846.01 | 80.80 | 416158.13 | 567404.79 | N 32 8 38.65 | W 104 14 56.80 | 2847.16 | 1.63 | 0.00 |
| | 10000.00 | 90.00 | 1.63 | 7258.00 | 2947.16 | 2945.97 | 83.64 | 416258.08 | 567407.63 | N 32 8 39.64 | W 104 14 56.76 | 2947.16 | 1.63 | 0.00 |
| | 10100.00 | 90.00 | 1.63 | 7258.00 | 3047.16 | 3045.93 | 86.48 | 416358.03 | 567410.47 | N 32 8 40.63 | W 104 14 56.73 | 3047.16 | 1.63 | 0.00 |
| | 10200.00 | 90.00 | 1.63 | 7258.00 | 3147.16 | 3145.89 | 89.31 | 416457.98 | 567413.31 | N 32 8 41.62 | W 104 14 56.69 | 3147.16 | 1.63 | 0.00 |
| | 10300.00 | 90.00 | 1.63 | 7258.00 | 3247.16 | 3245.85 | 92.15 | 416557.93 | 567416.14 | N 32 8 42.61 | W 104 14 56.66 | 3247.16 | 1.63 | 0.00 |
| | 10400.00 | 90.00 | 1.63 | 7258.00 | 3347.16 | 3345.81 | 94.99 | 416657.88 | 567418.98 | N 32 8 43.59 | W 104 14 56.63 | 3347.16 | 1.63 | 0.00 |
| | 10500.00 | 90.00 | 1.63 | 7258.00 | 3447.16 | 3445.77 | 97.83 | 416757.83 | 567421.82 | N 32 8 44.58 | W 104 14 56.59 | 3447.16 | 1.63 | 0.00 |
| | 10600.00 | 90.00 | 1.63 | 7258.00 | 3547.16 | 3545.73 | 100.67 | 416857.78 | 567424.66 | N 32 8 45.57 | W 104 14 56.56 | 3547.16 | 1.63 | 0.00 |
| | 10700.00 | 90.00 | 1.63 | 7258.00 | 3647.16 | 3645.69 | 103.50 | 416957.73 | 567427.49 | N 32 8 46.56 | W 104 14 56.53 | 3647.16 | 1.63 | 0.00 |
| | 10800.00 | 90.00 | 1.63 | 7258.00 | 3747.16 | 3745.65 | 106.34 | 417057.68 | 567430.33 | N 32 8 47.55 | W 104 14 56.49 | 3747.16 | 1.63 | 0.00 |
| | 10900.00 | 90.00 | 1.63 | 7258.00 | 3847.16 | 3845.61 | 109.18 | 417157.64 | 567433.17 | N 32 8 48.54 | W 104 14 56.46 | 3847.16 | 1.63 | 0.00 |
| | 11000.00 | 90.00 | 1.63 | 7258.00 | 3947.16 | 3945.57 | 112.02 | 417257.59 | 567436.01 | N 32 8 49.53 | W 104 14 56.42 | 3947.16 | 1.63 | 0.00 |
| | 11100.00 | 90.00 | 1.63 | 7258.00 | 4047.16 | 4045.53 | 114.86 | 417357.54 | 567438.84 | N 32 8 50.52 | W 104 14 56.39 | 4047.16 | 1.63 | 0.00 |
| | 11200.00 | 90.00 | 1.63 | 7258.00 | 4147.16 | 4145.49 | 117.69 | 417457.49 | 567441.68 | N 32 8 51.51 | W 104 14 56.36 | 4147.16 | 1.63 | 0.00 |
| | 11300.00 | 90.00 | 1.63 | 7258.00 | 4247.16 | 4245.45 | 120.53 | 417557.44 | 567444.52 | N 32 8 52.50 | W 104 14 56.32 | 4247.16 | 1.63 | 0.00 |
| | 11400.00 | 90.00 | 1.63 | 7258.00 | 4347.16 | 4345.41 | 123.37 | 417657.39 | 567447.36 | N 32 8 53.49 | W 104 14 56.29 | 4347.16 | 1.63 | 0.00 |
| | 11500.00 | 90.00 | 1.63 | 7258.00 | 4447.16 | 4445.37 | 126.21 | 417757.34 | 567450.20 | N 32 8 54.48 | W 104 14 56.25 | 4447.16 | 1.63 | 0.00 |
| | 11600.00 | 90.00 | 1.63 | 7258.00 | 4547.16 | 4545.33 | 129.05 | 417857.29 | 567453.03 | N 32 8 55.46 | W 104 14 56.22 | 4547.16 | 1.63 | 0.00 |
| | 11700.00 | 90.00 | 1.63 | 7258.00 | 4647.16 | 4645.29 | 131.88 | 417957.24 | 567455.87 | N 32 8 56.45 | W 104 14 56.19 | 4647.16 | 1.63 | 0.00 |
| | 11800.00 | 90.00 | 1.63 | 7258.00 | 4747.16 | 4745.25 | 134.72 | 418057.19 | 567458.71 | N 32 8 57.44 | W 104 14 56.15 | 4747.16 | 1.63 | 0.00 |
| | 11900.00 | 90.00 | 1.63 | 7258.00 | 4847.16 | 4845.21 | 137.56 | 418157.14 | 567461.55 | N 32 8 58.43 | W 104 14 56.12 | 4847.16 | 1.63 | 0.00 |
| | 12000.00 | 90.00 | 1.63 | 7258.00 | 4947.16 | 4945.17 | 140.40 | 418257.09 | 567464.38 | N 32 8 59.42 | W 104 14 56.08 | 4947.16 | 1.63 | 0.00 |
| | 12100.00 | 90.00 | 1.63 | 7258.00 | 5047.16 | 5045.13 | 143.24 | 418357.04 | 567467.22 | N 32 9 0.41 | W 104 14 56.05 | 5047.16 | 1.63 | 0.00 |
| | 12200.00 | 90.00 | 1.63 | 7258.00 | 5147.16 | 5145.09 | 146.07 | 418456.99 | 567470.06 | N 32 9 1.40 | W 104 14 56.02 | 5147.16 | 1.63 | 0.00 |
| | 12300.00 | 90.00 | 1.63 | 7258.00 | 5247.16 | 5245.05 | 148.91 | 418556.94 | 567472.90 | N 32 9 2.39 | W 104 14 55.98 | 5247.16 | 1.63 | 0.00 |
| Cimarex Marquardt Federal #11H PBHL | 12382.90 | 90.00 | 1.63 | 7258.00 | 5330.06 | 5327.91 | 151.26 | 418639.80 | 567475.25 | N 32 9 3.21 | W 104 14 55.95 | 5330.06 | 1.63 | 0.00 |

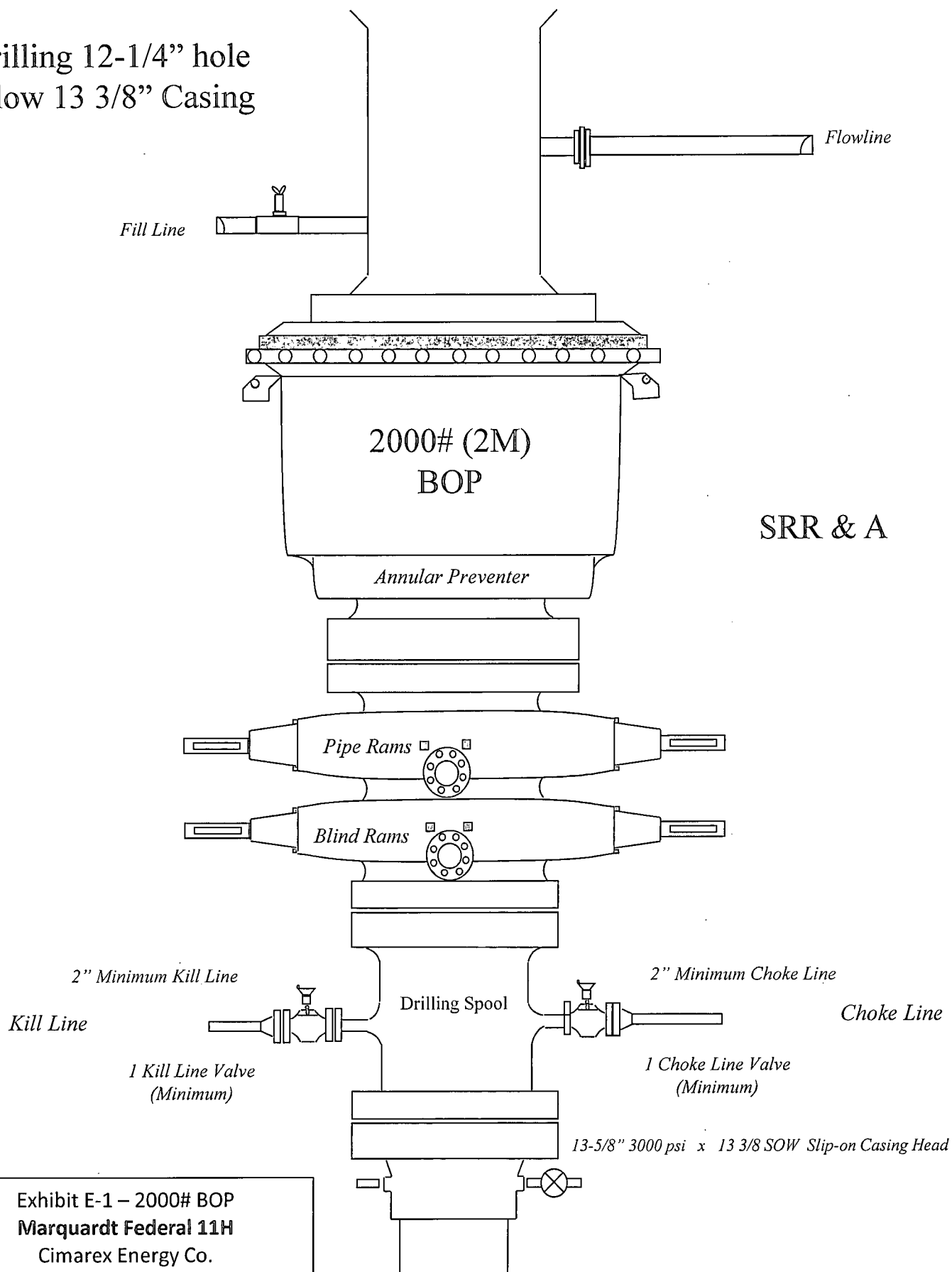
Survey Type: Non-Def Plan

Survey Error Model: ISCWSA Rev 0 *** 3-D 95.000% Confidence 2.7955 sigma
Survey Program:

| Description | MD From (ft) | MD To (ft) | EOU Freq (ft) | Hole Size (in) | Casing Diameter (in) | Survey Tool Type | Borehole / Survey |
|-------------|-----------------|---------------|------------------|-------------------|-------------------------|------------------|-------------------|
|-------------|-----------------|---------------|------------------|-------------------|-------------------------|------------------|-------------------|

| Comments | MD (ft) | Incl (°) | Azim Grid (°) | TVD (ft) | VSEC (ft) | NS (ft) | EW (ft) | Northing (ftUS) | Easting (ftUS) | Latitude (N/S ° ' ") | Longitude (E/W ° ' ") | Closure (ft) | Closure Azimuth (°) | DLS (°/100ft) |
|----------|------------|-------------|------------------|-------------|--------------|------------|------------|--------------------|-------------------|--|--------------------------|-----------------|------------------------|------------------|
| | | 0.000 | 12382.898 | | 1/100.000 | 30.000 | 30.000 | SLB_MWD-STD | | Original Borehole / Cimarex Marquardt Federal #11H Rev0 | | | | |

Drilling 12-1/4" hole
below 13 3/8" Casing



SRR & A

Exhibit E-1 – 2000# BOP
Marquardt Federal 11H

Cimarex Energy Co.

SHL 360 FNL & 1750 FWL; 13-25S-26E

BHL 330 FNL & 1980 FWL; 12-25S-26E

Eddy County, NM

Drilling 8-3/4" hole
below 9 5/8" Casing

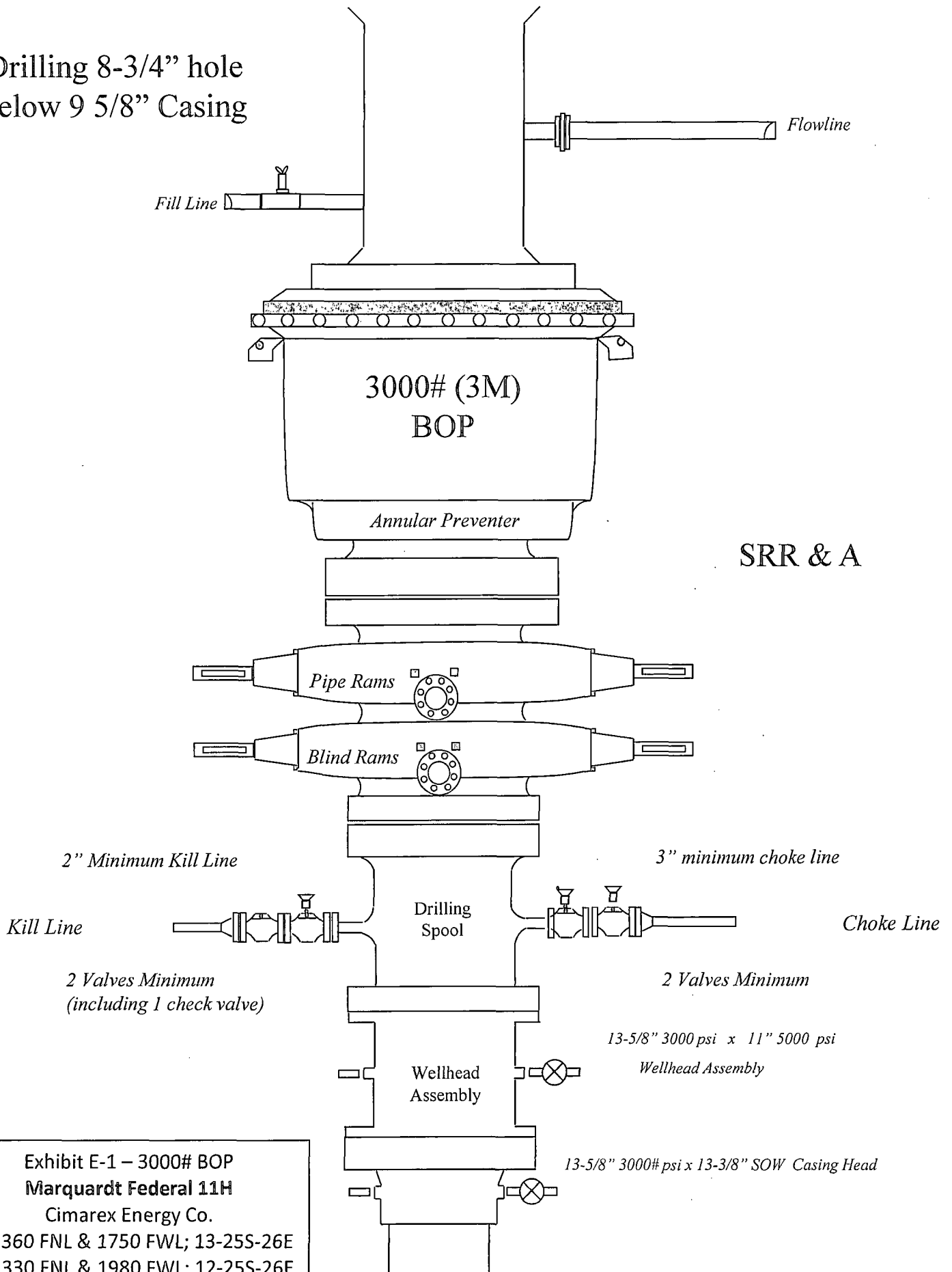


Exhibit E-1 – 3000# BOP
Marquardt Federal 11H

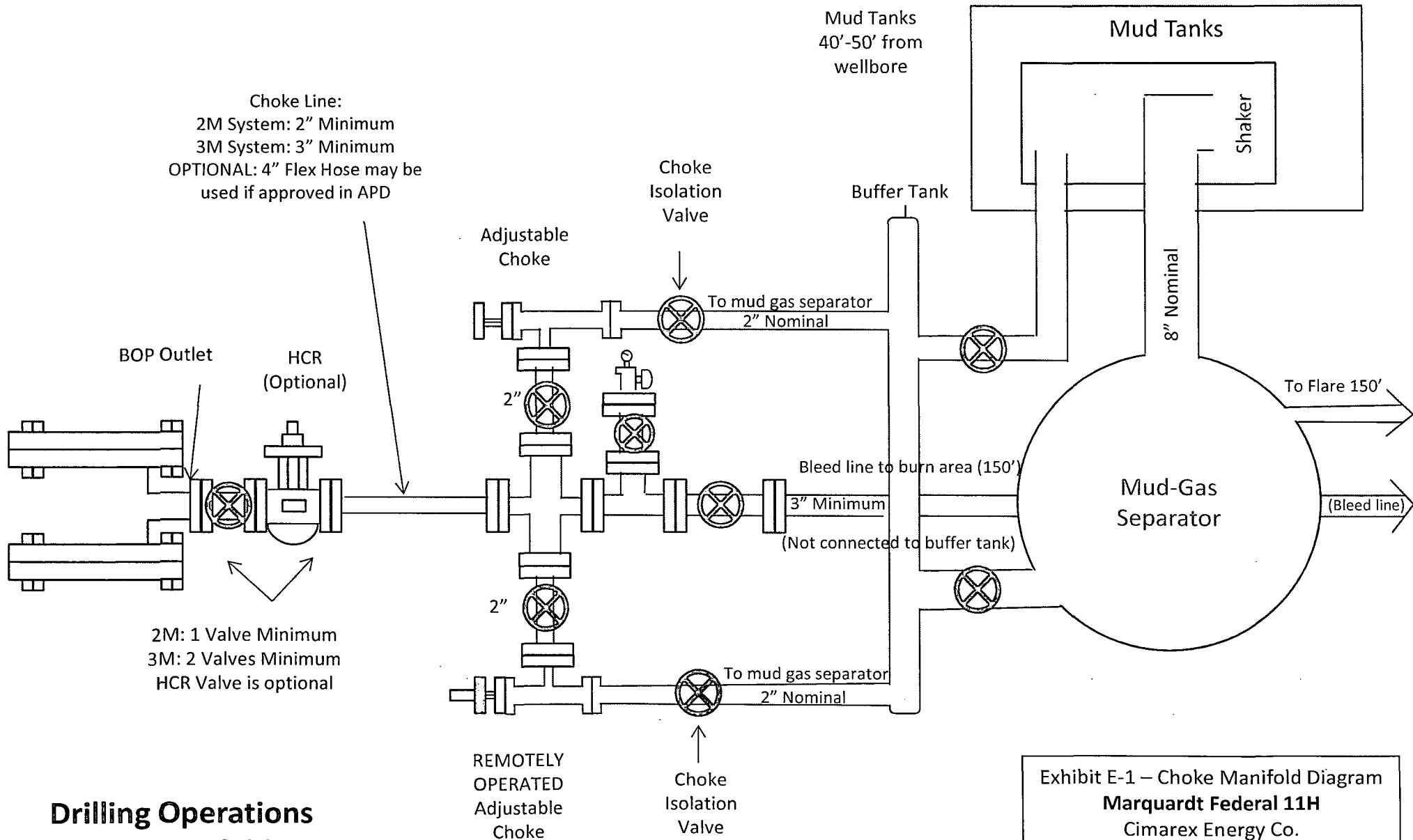
Cimarex Energy Co.

SHL 360 FNL & 1750 FWL; 13-25S-26E

BHL 330 FNL & 1980 FWL; 12-25S-26E

Eddy County, NM

Choke Line:
 2M System: 2" Minimum
 3M System: 3" Minimum
 OPTIONAL: 4" Flex Hose may be
 used if approved in APD



Drilling Operations Choke Manifold 2M/3M Service

Exhibit E-1 – Choke Manifold Diagram
Marquardt Federal 11H
 Cimarex Energy Co.
 SHL 360 FNL & 1750 FWL; 13-25S-26E
 BHL 330 FNL & 1980 FWL; 12-25S-26E
 Eddy County, NM



Midwest Hose & Specialty, Inc.

Exhibit F-1 - Co-Flex Hose Hydrostatic Test

Marquardt Federal 11H

Cimarex Energy Co.

SHL 360 FNL & 1750 FWL; 13-25S-26E

BHL 330 FNL & 1980 FWL; 12-25S-26E

Eddy County, NM

INTERNAL HYDROSTATIC TEST REPORT

| | | | |
|---|--------------------------------------|--|--|
| Customer: Oderco Inc. | | P.O. Number: odyd-271 | |
| HOSE SPECIFICATIONS | | | |
| Type: Stainless Steel Armor Choke & Kill Hose | | Hose Length: 45'ft. | |
| I.D. 4 INCHES | | O.D. 9 INCHES | |
| WORKING PRESSURE 10,000 PSI | TEST PRESSURE 15,000 PSI | BURST PRESSURE 0 PSI | |
| COUPLINGS | | | |
| Stem Part No. OKC OKC | | Ferrule No. OKC OKC | |
| Type of Coupling: Swage-It | | | |
| PROCEDURE | | | |
| <u>Hose assembly pressure tested with water at ambient temperature.</u> | | | |
| TIME HELD AT TEST PRESSURE 15 MIN. | | ACTUAL BURST PRESSURE: 0 PSI | |
| Hose Assembly Serial Number: 79793 | | Hose Serial Number: OKC | |
| Comments: | | | |
| Date: 3/8/2011 | Tested: <i>A. J. J. J.</i> | Approved: <i>[Signature]</i> | |



Midwest Hose
& Specialty, Inc.

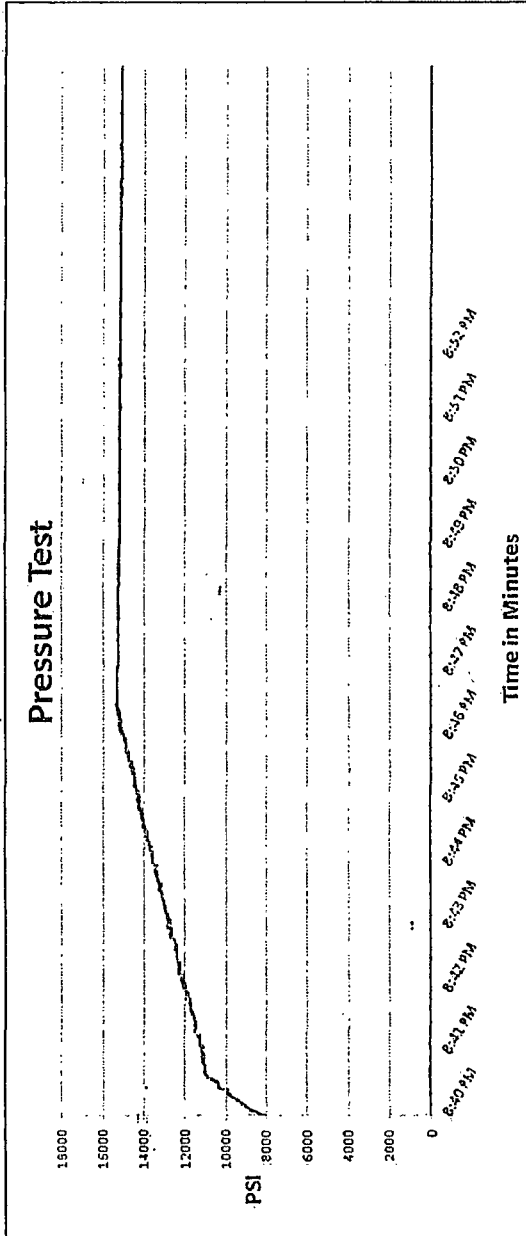
Internal Hydrostatic Test Graph

Customer: Houston

Pick Ticket #: 94260

March 3, 2011

| Hose Specifications | | Verification | |
|---------------------|------------------------------------|------------------|------------------------|
| Hose Type | Length | Type of Fittings | Coupling Method |
| C&K | 45' | 4 1/16 10K | Swage |
| I.D. | O.D. | Die Size | Final O.D. |
| 4" | 6.09" | 6.38" | 6.25" |
| Working Pressure | Burst Pressure | Hose Serial # | Hose Assembly Serial # |
| 1000 PSI | Standard Safety Multiplier Applies | 5544 | 79793 |



| | | | |
|---------------|----------------------------|-----------------------|---------------|
| Test Pressure | Time Held at Test Pressure | Actual Burst Pressure | Peak Pressure |
| 15000 PSI | 11 Minutes | | 15483 PSI |

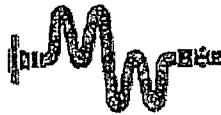
Comments: Hose assembly pressure tested with water at ambient temperature.

Tested By: Zac McConnell

Approved By: Kim Thomas

[Signature]

[Signature]



Midwest Hose
& Specialty Inc.

Exhibit F -3- Co-Flex Hose

Marquardt Federal 11H

Cimarx Energy Co.

SHL 360 FNL & 1750 FWL; 13-25S-26E

BHL 330 FNL & 1980 FWL; 12-25S-26E

Eddy County, NM

Specification Sheet Choke & Kill Hose

The Midwest Hose & Specialty Choke & Kill hose is manufactured with only premium components. The reinforcement cables, inner liner and cover are made of the highest quality material to handle the tough drilling applications of today's industry. The end connections are available with API flanges, API male threads, hubs, hammer unions or other special fittings upon request. Hose assembly is manufactured to API 7K. This assembly is wrapped with fire resistant vermiculite coated fiberglass insulation, rated at 2000 degrees with stainless steel armor cover.

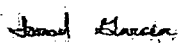
| | |
|-------------------------------|--|
| Working Pressure: | 5,000 or 10,000 psi working pressure |
| Test Pressure: | 10,000 or 15,000 psi test pressure |
| Reinforcement: | Multiple steel cables |
| Cover: | Stainless Steel Armor |
| Inner Tube: | Petroleum resistant, Abrasion resistant |
| End Fitting: | API flanges, API male threads, threaded or butt weld hammer unions, unbolt and other special connections |
| Maximum Length: | 110 Feet |
| ID: | 2-1/2", 3", 3-1/2", 4" |
| Operating Temperature: | -22 deg F to +180 deg F (-30 deg C to +82 deg C) |

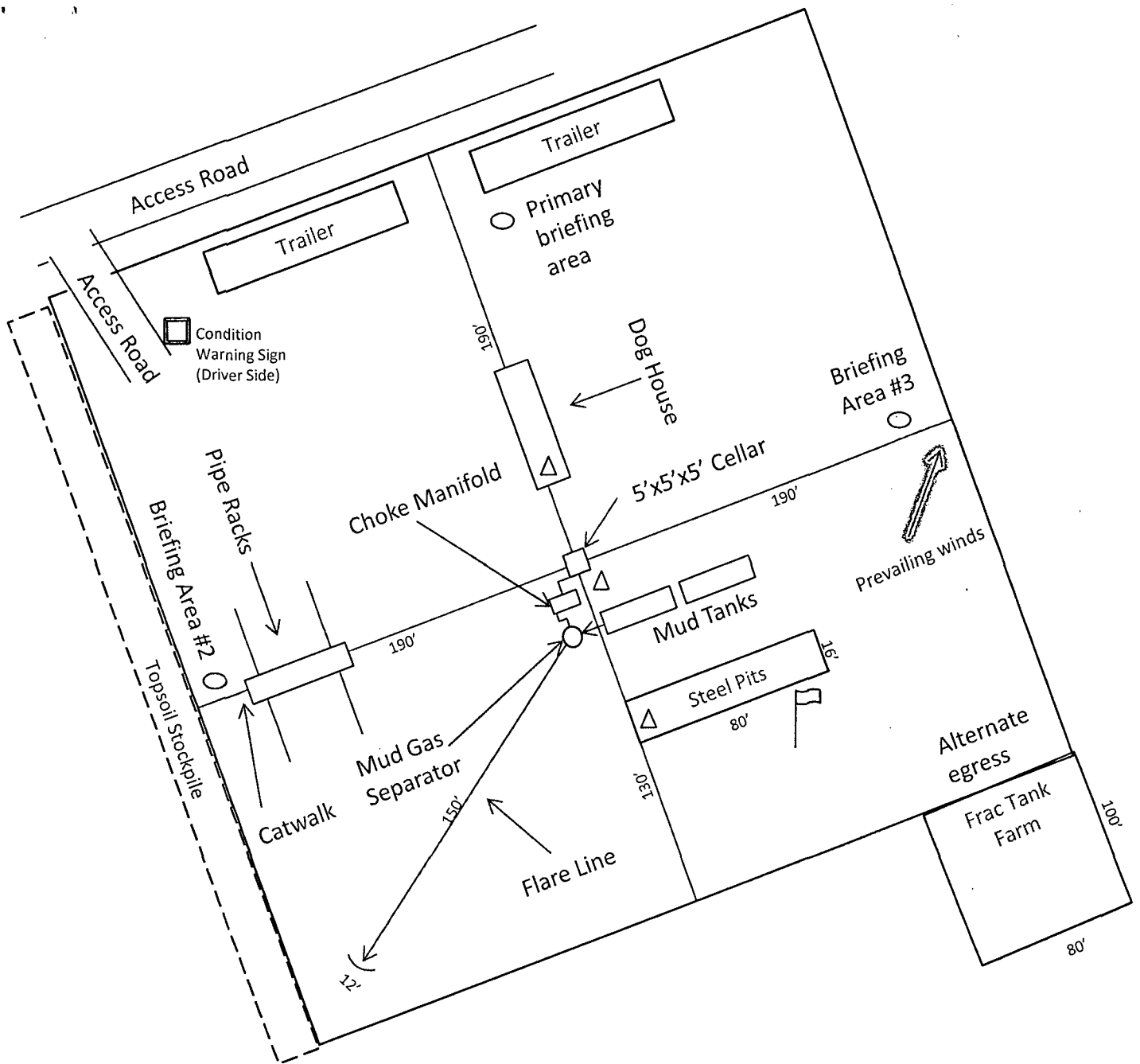
Exhibit F-2 – Co-Flex Hose
Marquardt Federal 11H
Cimarex Energy Co.
SHL 360 FNL & 1750 FWL; 13-25S-26E
BHL 330 FNL & 1980 FWL; 12-25S-26E
Eddy County, NM



Midwest Hose & Specialty, Inc.

Certificate of Conformity

| | | |
|--|---------------|--------------|
| Customer: | | PO |
| DEM | | ODYD-271 |
| SPECIFICATIONS | | |
| Sales Order | Dated: | |
| 79793 | 3/8/2011 | |
| <p>We hereby certify that the material supplied for the referenced purchase order to be true according to the requirements of the purchase order and current industry standards</p> <p>Supplier: Midwest Hose & Specialty, Inc. 10640 Tanner Road Houston, Texas 77041</p> | | |
| Comments: | | |
| Approved: | | Date: |
|  | | 3/8/2011 |



Wind Direction Indicators
(wind sock or streamers)



• H2S Monitors
(alarms at bell nipple and shale shaker)



Briefing Areas

N



Exhibit D – Rig Diagram

Marquardt Federal 11H

Cimarex Energy Co.

SHL 360 FNL & 1750 FWL; 13-25S-26E

BHL 330 FNL & 1980 FWL; 12-25S-26E

Eddy County, NM

Hydrogen Sulfide Drilling Operations Plan

Marquardt Federal 11H

Cimarex Energy Co.

UL: C, Sec. 13, 25S, 26E

Eddy Co., NM

- 1 All Company and Contract personnel admitted on location must be trained by a qualified H₂S safety instructor to the following:
 - A. Characteristics of H₂S
 - B. Physical effects and hazards
 - C. Principal and operation of H₂S detectors, warning system and briefing areas.
 - D. Evacuation procedure, routes and first aid.
 - E. Proper use of safety equipment & life support systems
 - F. Essential personnel meeting Medical Evaluation criteria will receive additional training on the proper use of 30 minute pressure demand air packs.
- 2 H₂S Detection and Alarm Systems:
 - A. H₂S sensors/detectors to be located on the drilling rig floor, in the base of the sub structure/cellar area, on the mud pits in the shale shaker area. Additional H₂S detectors may be placed as deemed necessary.
 - B. An audio alarm system will be installed on the derrick floor and in the top doghouse.
- 3 Windsock and/or wind streamers:
 - A. Windsock at mudpit area should be high enough to be visible.
 - B. Windsock on the rig floor and / or top doghouse should be high enough to be visible.
- 4 Condition Flags and Signs
 - A. Warning sign on access road to location.
 - B. Flags to be displayed on sign at entrance to location. Green flag indicates normal safe condition. Yellow flag indicates potential pressure and danger. Red flag indicates danger (H₂S present in dangerous concentration). Only H₂S trained and certified personnel admitted to location.
- 5 Well control equipment:
 - A. See exhibit "E-1"
- 6 Communication:
 - A. While working under masks chalkboards will be used for communication.
 - B. Hand signals will be used where chalk board is inappropriate.
 - C. Two way radio will be used to communicate off location in case of emergency help is required. In most cases cellular telephones will be available at most drilling foreman's trailer or living quarters.
- 7 Drillstem Testing:

No DSTs or cores are planned at this time.
- 8 Drilling contractor supervisor will be required to be familiar with the effects H₂S has on tubular goods and other mechanical equipment.
- 9 If H₂S is encountered, mud system will be altered if necessary to maintain control of formation. A mud gas separator will be brought into service along with H₂S scavengers if necessary.

H₂S Contingency Plan
Marquardt Federal 11H
Cimarex Energy Co.
UL: C, Sec. 13, 25S, 26E
Eddy Co., NM

Emergency Procedures

In the event of a release of gas containing H₂S, the first responder(s) must:

- « Isolate the area and prevent entry by other persons into the 100 ppm ROE.
- « Evacuate any public places encompassed by the 100 ppm ROE.
- « Be equipped with H₂S monitors and air packs in order to control the release.
- « Use the "buddy system" to ensure no injuries occur during the response.
- « Take precautions to avoid personal injury during this operation.
- « Contact operator and/or local officials to aid in operation. See list of phone numbers attached.
- « Have received training in the:
 - Detection of H₂S, and
 - Measures for protection against the gas,
 - Equipment used for protection and emergency response.

Ignition of Gas Source

Should control of the well be considered lost and ignition considered, take care to protect against exposure to Sulfur Dioxide (SO₂). Intentional ignition must be coordinated with the NMOCD and local officials. Additionally, the NM State Police may become involved. NM State Police shall be the Incident Command on scene of any major release. Take care to protect downwind whenever there is an ignition of the gas.

Characteristics of H₂S and SO₂

| Common Name | Chemical Formula | Specific Gravity | Threshold Limit | Hazardous Limit | Lethal Concentration |
|------------------|------------------|------------------|-----------------|-----------------|----------------------|
| Hydrogen Sulfide | H ₂ S | 1.189 Air=1 | 10 ppm | 100 ppm/hr | 600 ppm |
| Sulfur Dioxide | SO ₂ | 2.21 Air=1 | 2 ppm | N/A | 1000 ppm |

Contacting Authorities

Cimarex Energy Co. of Colorado's personnel must liaise with local and state agencies to ensure a proper response to a major release. Additionally, the OCD must be notified of the release as soon as possible but no later than 4 hours. Agencies will ask for information such as type and volume of release, wind direction, location of release, etc. Be prepared with all information available including directions to site. The following call list of essential and potential responders has been prepared for use during a release. Cimarex Energy Co. of Colorado's response must be in coordination with the State of New Mexico's "Hazardous Materials Emergency Response Plan" (HMER).

H₂S Contingency Plan Emergency Contacts

Marquardt Federal 11H

Cimarex Energy Co.

UL: C, Sec. 13, 25S, 26E

Eddy Co., NM

Company Office

| | |
|---------------------------------|--------------|
| Cimarex Energy Co. of Colorado | 800-969-4789 |
| Co. Office and After-Hours Menu | |

Key Personnel

| Name | Title | Office | Mobile |
|-----------------|-----------------------------|--------------|--------------|
| Larry Seigrist | Drilling Manager | 432-620-1934 | 580-243-8485 |
| Doug McQuitty | Drilling Superintendent | 432-620-1933 | 806-640-2605 |
| Scott Lucas | Drilling Superintendent | 432-620-1989 | 432-894-5572 |
| Conner Cromeens | Construction Foreman | | 432-270-0313 |
| Roy Shirley | Construction Superintendent | | 432-634-2136 |

Artesia

| | |
|--------------------------------------|---------------------|
| Ambulance | 911 |
| State Police | 575-746-2703 |
| City Police | 575-746-2703 |
| Sheriff's Office | 575-746-9888 |
| Fire Department | 575-746-2701 |
| Local Emergency Planning Committee | 575-746-2122 |
| New Mexico Oil Conservation Division | 575-748-1283 |

Carlsbad

| | |
|------------------------------------|---------------------|
| Ambulance | 911 |
| State Police | 575-885-3137 |
| City Police | 575-885-2111 |
| Sheriff's Office | 575-887-7551 |
| Fire Department | 575-887-3798 |
| Local Emergency Planning Committee | 575-887-6544 |
| US Bureau of Land Management | 575-887-6544 |

Santa Fe

| | |
|--|--------------|
| New Mexico Emergency Response Commission (Santa Fe) | 505-476-9600 |
| New Mexico Emergency Response Commission (Santa Fe) 24 Hrs | 505-827-9126 |
| New Mexico State Emergency Operations Center | 505-476-9635 |

National

| | |
|---|--------------|
| National Emergency Response Center (Washington, D.C.) | 800-424-8802 |
|---|--------------|

Medical

| | |
|---|--------------|
| Flight for Life - 4000 24th St.; Lubbock, TX | 806-743-9911 |
| Aerocare - R3, Box 49F; Lubbock, TX | 806-747-8923 |
| Med Flight Air Amb - 2301 Yale Blvd S.E., #D3; Albuquerque, NM | 505-842-4433 |
| SB Air Med Service - 2505 Clark Carr Loop S.E.; Albuquerque, NM | 505-842-4949 |

Other

| | | | |
|-----------------------|--------------|----|--------------|
| Boots & Coots IWC | 800-256-9688 | or | 281-931-8884 |
| Cudd Pressure Control | 432-699-0139 | or | 432-563-3356 |
| Halliburton | 575-746-2757 | | |
| B.J. Services | 575-746-3569 | | |

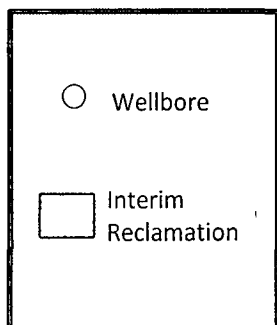
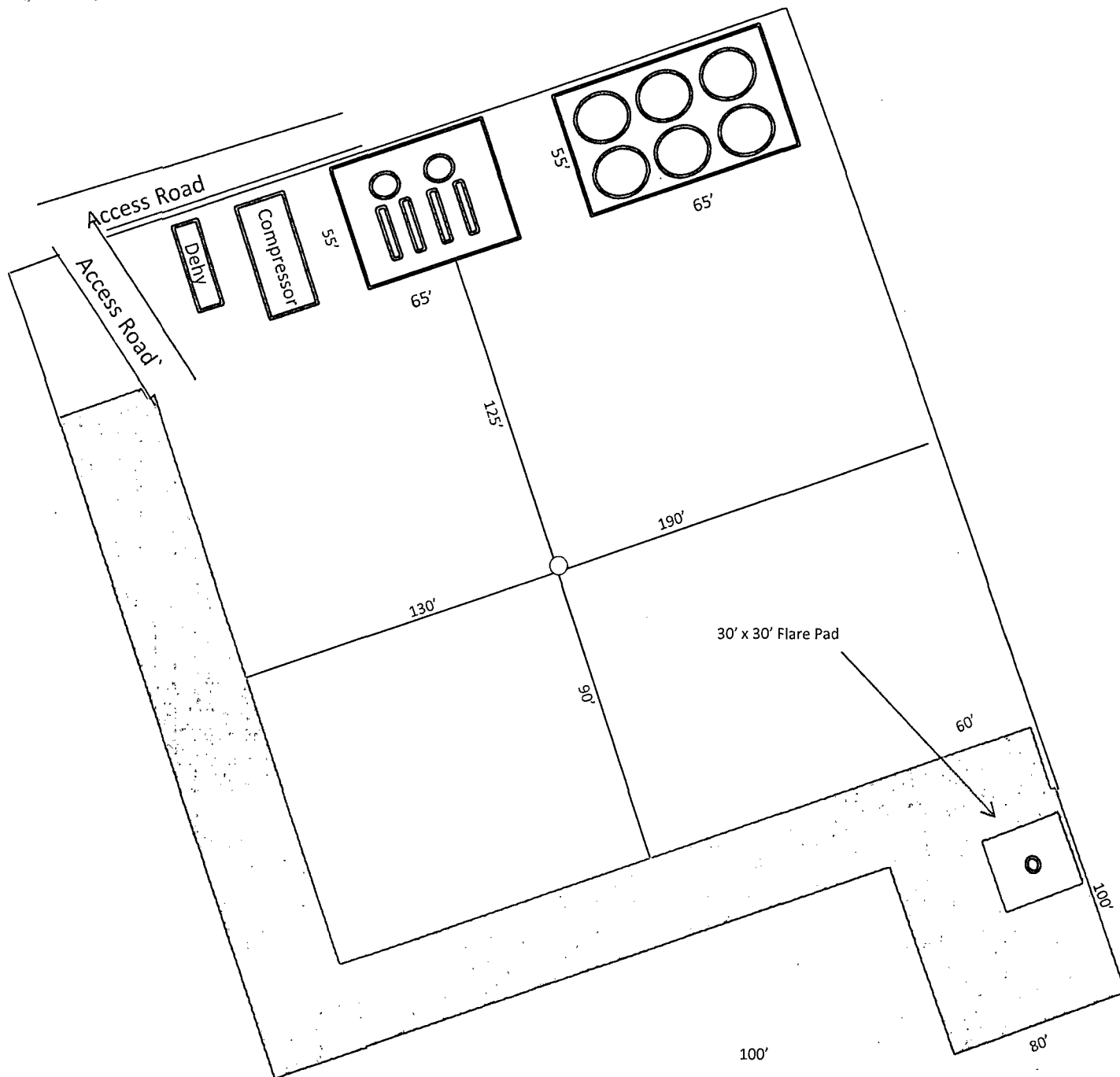


Exhibit D-1 – Production Facilities and
Interim Reclamation Diagram
Marquardt Federal 11H
Cimarex Energy Co.
SHL 360 FNL & 1750 FWL; 13-25S-26E
BHL 330 FNL & 1980 FWL; 12-25S-26E
Eddy County, NM

Surface Use Plan
Marquardt Federal #11H
Cimarex Energy Co.
UL: C, Sec. 13, 25S, 26E
Eddy Co., NM

The following surface use plan of operations will be followed and carried out once the APD is approved. No other disturbance will be created other than what is submitted in this surface use plan without approval. If any other disturbance is needed after the APD is approved, a BLM approved sundry notice or right of way application will be submitted for approval prior to any new surface disturbance.

1. Existing Roads:

Area maps: Exhibit "B" - reproduction of Eddy Co. General Highway Map. Exhibit "C" - reproduction of a USGS Topographic Map. Exhibit "C-1" - well site layout map. Exhibits "C," "C-1" - existing roads map.

The maximum width of the driving surface will be 14'. The road will be crowned and ditched with a 2% slope from the tip of the crown to the edge of the driving surface. The ditches will be 1' deep with 3:1 slopes. The driving surface will be made of 6" rolled and compacted caliche.

Existing access road route to the proposed project is depicted on the public access point map if applicable. Improvements to the driving surface will be done where necessary. No new surface disturbance will be done, unless otherwise noted in the New or Reconstructed Access Roads section of the surface use plan.

From the junction of John D. Forehand and Black River Village, go south on John D. Forehand for 4.0 miles. Turn west, go 3.4 miles veering south. Continue 1 miles to proposed location.

If existing roads are used, the operator will improve or maintain existing roads in a condition the same as or better than before the operations began. The operator will repair pot holes, etc. All existing structures on the entire access route such as cattleguards, other range improvement projects, culverts, etc. will be properly repaired or replaced if they are damaged or have deteriorated beyond practical use.

The operator will prevent and abate fugitive dust as needed, whether created by vehicular traffic, equipment operations, or other events.

2. New or Reconstructed Access Roads:

No new access road planned.

3. Planned Electric Line:

Cimarex Energy plans to construct an off-lease electric line to service the well. The proposed electric line does cross lease boundaries, a right of way grant will be submitted to and obtained from the BLM.

4. Location of Existing Well in a One-Mile Radius -Exhibit A:

- Water Wells - None known
- Disposal Wells - None known
- Drilling Wells - None known
- Producing Wells - As shown on Exhibit A
- Abandoned Wells - As shown on Exhibit A

Surface Use Plan
Marquardt Federal #11H
Cimarex Energy Co.
UL: C, Sec. 13, 25S, 26E
Eddy Co., NM

5. Location of Existing or Proposed Production Facilities:

If on completion this well is a producer, a tank battery will be used and the necessary production equipment will be installed at the wellsite. Any changes to the facility will be submitted via sundry notice.

6. Location and Type of Water Supply:

Water will be purchased locally from a commercial source and trucked over the access roads.

7. Source of Construction Material:

If possible, native caliche will be obtained from the excavation of drill site. The primary way of obtaining caliche will be by "turning over" the location. This means caliche will be obtained from the actual well site. A caliche permit will be obtained from BLM prior to pushing up any caliche. 2400 cu yds is the max amount of caliche needed for pad and roads. Amount will vary for each pad. The procedure below has been approved by BLM personnel:

- The top 6 inches of topsoil is pushed off and stockpiled along the side of the location.
- An approximate 120' x 120' area is used within the proposed well site to remove caliche.
- Subsoil is removed and piled alongside the 120' by 120' area within the pad site.
- When caliche is found, material will be stockpiled within the pad site to build the location and road.
- Then subsoil is pushed back in the hole and caliche is spread accordingly across entire location and road.
- Once well is drilled, the stockpiled top soil will be used for interim reclamation and spread along areas where caliche is picked up and the location size is reduced. Neither caliche nor subsoil will be stockpiled outside of the well pad. Topsoil will be stockpiled along the edge of the pad as depicted in Exhibit D – Rig Layout Diagram.

In the event that no caliche is found onsite, caliche will be hauled in from a BLM-approved caliche pit.

8. Ancillary Facilities:

No camps or airstrips to be constructed.

9. Well Site Layout:

- Exhibit "D" shows location and rig layout.
- Mud pits in the closed circulation system will be steel pits and the cuttings will be stored in steel containment pits.
- Cuttings will be stored in steel pits until they are hauled to a state-approved disposal facility.
- If the well is a producer, those areas of the location not essential to production facilities will be reclaimed and seeded per BLM requirements.

Surface Use Plan
Marquardt Federal #11H
Cimarex Energy Co.
UL: C, Sec. 13, 25S, 26E
Eddy Co., NM

10. Plans for Restoration of Surface:

Rehabilitation of the location will start in a timely manner after all drilling operations cease. The type of reclamation will depend on whether the well is a producer or a dry hole.

In areas planned for interim and final reclamation, surfacing materials will be removed and returned to a mineral pit or recycled to repair or build roads and well pads.

Drainage systems, if any, will be reshaped to the original configuration with provisions made to alleviate erosion. These may need to be modified in certain circumstances to prevent inundation of the location's pad and surface facilities. After the area has been shaped and contoured, topsoil from the spoil pile will be placed over the disturbed area to the extent possible. Revegetation procedures will comply with BLM standards.

If the well is a dry hole, the pad and road area will be recountoured to match the existing terrain. Topsoil will be spread to the extent possible. Revegetation will comply with BLM standards.

Should the well be producer, those areas of the location not essential to production facilities and operations will be reclaimed and seeded per BLM requirements. Please see Production Facilities Layout Diagram, exhibit D-1

11. Methods of Handling Waste

- Drilling fluids, produced oil, and water from the well during drilling and completion operations will be stored safely and disposed of properly in a NMOCD approved disposal facility.
- Garbage and trash produced during drilling and completion operations will be collected in a trash container and disposed of properly at a state approved disposal facility. All trash on and around well site will be collected for disposal.
- Human waste and grey water will be properly contained and disposed of properly at a state approved disposal site.
- After drilling and completion operations, trash, chemicals, salts, frac sand and other waste will be removed and disposed of properly at a state approved disposal site.
- The well will be drilled utilizing a closed loop system. Drill cuttings will be properly disposed of into steel tanks and taken to an NMOCD approved disposal facility.

12. Other Information:

- Topography consists of a sloping plane with loose tan sands. Vegetation is mainly yucca, mesquite and shin oak.
- The wellsite is on surface owned by Department of the Interior, Bureau of Land Management. The land is used mainly for farming, cattle ranching, recreational use, and oil and gas production.
- An archaeological survey will be conducted on the location and proposed roads and this report will be filed with the Bureau of Land Management in the Carsbad BLM office.
- There are no known dwellings within 1½ miles of this location.

13. On Site Notes and Information:

On 6/18/13 there was an on-site meeting with Barry Hunt, Cimarex representative, and Legion Brumley, BLM. The original location was taken out by Cimarex pipeline and powerline. Moved 690' south (into section to the south) due to the utility lines as well as other other the south. At move, closest pipeline is 211' north. V-door west. Top soil west. Interim reclamation: south, east, west. Frac pad SE. Flare pad SW. Short access road at northwest corner of about 20'.

PECOS DISTRICT CONDITIONS OF APPROVAL

| | |
|------------------------------|---|
| OPERATOR'S NAME: | Cimarex Energy Co. |
| LEASE NO.: | NMNM-14124 |
| WELL NAME & NO.: | Marquardt Federal 11H |
| SURFACE HOLE FOOTAGE: | 0360' FNL & 1750' FWL |
| BOTTOM HOLE FOOTAGE | 0330' FNL & 1980' FWL Sec. 12, T. 25 S., R 26 E. |
| LOCATION: | Section 13, T. 25 S., R 26 E., NMPM |
| COUNTY: | Eddy County, New Mexico |

TABLE OF CONTENTS

Standard Conditions of Approval (COA) apply to this APD. If any deviations to these standards exist or special COAs are required, the section with the deviation or requirement will be checked below.

- ☐ **General Provisions**
- ☐ **Permit Expiration**
- ☐ **Archaeology, Paleontology, and Historical Sites**
- ☐ **Noxious Weeds**
- ☐ **Special Requirements**
- ☐ **Construction**
 - Notification
 - Topsoil
 - Closed Loop System
 - Federal Mineral Material Pits
 - Well Pads
 - Roads
- ☐ **Road Section Diagram**
- ☒ **Drilling**
 - Cement Requirements
 - H2S Requirements
 - Medium Cave/Karst
 - Logging Requirements
 - Waste Material and Fluids
- ☐ **Production (Post Drilling)**
 - Well Structures & Facilities
 - Pipelines
 - Electric Lines
- ☐ **Interim Reclamation**
- ☐ **Final Abandonment & Reclamation**

I. GENERAL PROVISIONS

The approval of the Application For Permit To Drill (APD) is in compliance with all applicable laws and regulations: 43 Code of Federal Regulations 3160, the lease terms, Onshore Oil and Gas Orders, Notices To Lessees, New Mexico Oil Conservation Division (NMOCD) Rules, National Historical Preservation Act As Amended, and instructions and orders of the Authorized Officer. Any request for a variance shall be submitted to the Authorized Officer on Form 3160-5, Sundry Notices and Report on Wells.

II. PERMIT EXPIRATION

If the permit terminates prior to drilling and drilling cannot be commenced within 60 days after expiration, an operator is required to submit Form 3160-5, Sundry Notices and Reports on Wells, requesting surface reclamation requirements for any surface disturbance. However, if the operator will be able to initiate drilling within 60 days after the expiration of the permit, the operator must have set the conductor pipe in order to allow for an extension of 60 days beyond the expiration date of the APD. (Filing of a Sundry Notice is required for this 60 day extension.)

III. ARCHAEOLOGICAL, PALEONTOLOGY & HISTORICAL SITES

Any cultural and/or paleontological resource discovered by the operator or by any person working on the operator's behalf shall immediately report such findings to the Authorized Officer. The operator is fully accountable for the actions of their contractors and subcontractors. The operator shall suspend all operations in the immediate area of such discovery until written authorization to proceed is issued by the Authorized Officer. An evaluation of the discovery shall be made by the Authorized Officer to determine the appropriate actions that shall be required to prevent the loss of significant cultural or scientific values of the discovery. The operator shall be held responsible for the cost of the proper mitigation measures that the Authorized Officer assesses after consultation with the operator on the evaluation and decisions of the discovery. Any unauthorized collection or disturbance of cultural or paleontological resources may result in a shutdown order by the Authorized Officer.

IV. NOXIOUS WEEDS

The operator shall be held responsible if noxious weeds become established within the areas of operations. Weed control shall be required on the disturbed land where noxious weeds exist, which includes the roads, pads, associated pipeline corridor, and adjacent land affected by the establishment of weeds due to this action. The operator shall consult with the Authorized Officer for acceptable weed control methods, which include following EPA and BLM requirements and policies.

V. SPECIAL REQUIREMENT(S)

VI. CONSTRUCTION

A. NOTIFICATION

The BLM shall administer compliance and monitor construction of the access road and well pad. Notify the Carlsbad Field Office at (575) 234-5909 at least 3 working days prior to commencing construction of the access road and/or well pad.

When construction operations are being conducted on this well, the operator shall have the approved APD and Conditions of Approval (COA) on the well site and they shall be made available upon request by the Authorized Officer.

B. TOPSOIL

The operator shall strip the top portion of the soil (root zone) from the entire well pad area and stockpile the topsoil along the edge of the well pad as depicted in the APD. The root zone is typically six (6) inches in depth. All the stockpiled topsoil will be redistributed over the interim reclamation areas. Topsoil shall not be used for berming the pad or facilities. For final reclamation, the topsoil shall be spread over the entire pad area for seeding preparation.

Other subsoil (below six inches) stockpiles must be completely segregated from the topsoil stockpile. Large rocks or subsoil clods (not evident in the surrounding terrain) must be buried within the approved area for interim and final reclamation.

C. CLOSED LOOP SYSTEM

Tanks are required for drilling operations: No Pits.

The operator shall properly dispose of drilling contents at an authorized disposal site.

D. FEDERAL MINERAL MATERIALS PIT

Payment shall be made to the BLM prior to removal of any federal mineral materials. Call the Carlsbad Field Office at (575) 234-5972.

E. WELL PAD SURFACING

Surfacing of the well pad is not required.

If the operator elects to surface the well pad, the surfacing material may be required to be removed at the time of reclamation.

The well pad shall be constructed in a manner which creates the smallest possible surface disturbance, consistent with safety and operational needs.

F. EXCLOSURE FENCING (CELLARS & PITS)

Exclosure Fencing

The operator will install and maintain exclosure fencing for all open well cellars to prevent access to public, livestock, and large forms of wildlife before and after drilling operations until the pit is free of fluids and the operator initiates backfilling. (For examples of exclosure fencing design, refer to BLM's Oil and Gas Gold Book, Exclosure Fence Illustrations, Figure 1, Page 18.)

G. ON LEASE ACCESS ROADS

Road Width

The access road shall have a driving surface that creates the smallest possible surface disturbance and does not exceed fourteen (14) feet in width. The maximum width of surface disturbance, when constructing the access road, shall not exceed twenty-five (25) feet.

Surfacing

Surfacing material is not required on the new access road driving surface. If the operator elects to surface the new access road or pad, the surfacing material may be required to be removed at the time of reclamation.

Where possible, no improvements should be made on the unsurfaced access road other than to remove vegetation as necessary, road irregularities, safety issues, or to fill low areas that may sustain standing water.

The Authorized Officer reserves the right to require surfacing of any portion of the access road at any time deemed necessary. Surfacing may be required in the event the road deteriorates, erodes, road traffic increases, or it is determined to be beneficial for future field development. The surfacing depth and type of material will be determined at the time of notification.

Crowning

Crowning shall be done on the access road driving surface. The road crown shall have a grade of approximately 2% (i.e., a 1" crown on a 14' wide road). The road shall conform to Figure 1; cross section and plans for typical road construction.

Ditching

Ditching shall be required on both sides of the road.

Turnouts

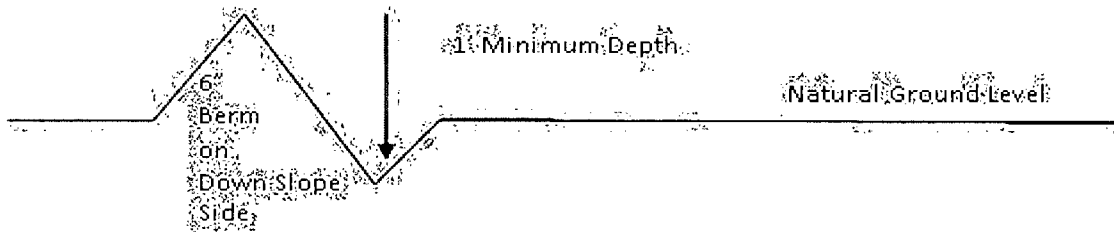
Vehicle turnouts shall be constructed on the road. Turnouts shall be intervisible with interval spacing distance less than 1000 feet. Turnouts shall conform to Figure 1; cross section and plans for typical road construction.

Drainage

Drainage control systems shall be constructed on the entire length of road (e.g. ditches, sidehill outslowing and insloping, lead-off ditches, culvert installation, and low water crossings).

A typical lead-off ditch has a minimum depth of 1 foot below and a berm of 6 inches above natural ground level. The berm shall be on the down-slope side of the lead-off ditch.

Cross Section of a Typical Lead-off Ditch



All lead-off ditches shall be graded to drain water with a 1 percent minimum to 3 percent maximum ditch slope. The spacing interval are variable for lead-off ditches and shall be determined according to the formula for spacing intervals of lead-off ditches, but may be amended depending upon existing soil types and centerline road slope (in %);

Formula for Spacing Interval of Lead-off Ditches

Example - On a 4% road slope that is 400 feet long, the water flow shall drain water into a lead-off ditch. Spacing interval shall be determined by the following formula:

$$400 \text{ foot road with } 4\% \text{ road slope: } \frac{400'}{4\%} + 100' = 200' \text{ lead-off ditch interval}$$

Culvert Installations

Appropriately sized culverts shall be installed at deep waterway channel flow crossings through the road.

Cattleguards

An appropriately sized cattleguard sufficient to carry out the project shall be installed and maintained at fence/road crossings.

Any existing cattleguards on the access road route shall be repaired or replaced if they are damaged or have deteriorated beyond practical use. The operator shall be responsible for the condition of the existing cattleguards that are in place and are utilized during lease operations.

Fence Requirement

Where entry is granted across a fence line, the fence shall be braced and tied off on both sides of the passageway prior to cutting.

The operator shall notify the private surface landowner or the grazing allotment holder prior to crossing any fences.

Public Access

Public access on this road shall not be restricted by the operator without specific written approval granted by the Authorized Officer.

Construction Steps

1. Salvage topsoil
2. Construct road

3. Redistribute topsoil
4. Revegetate slopes

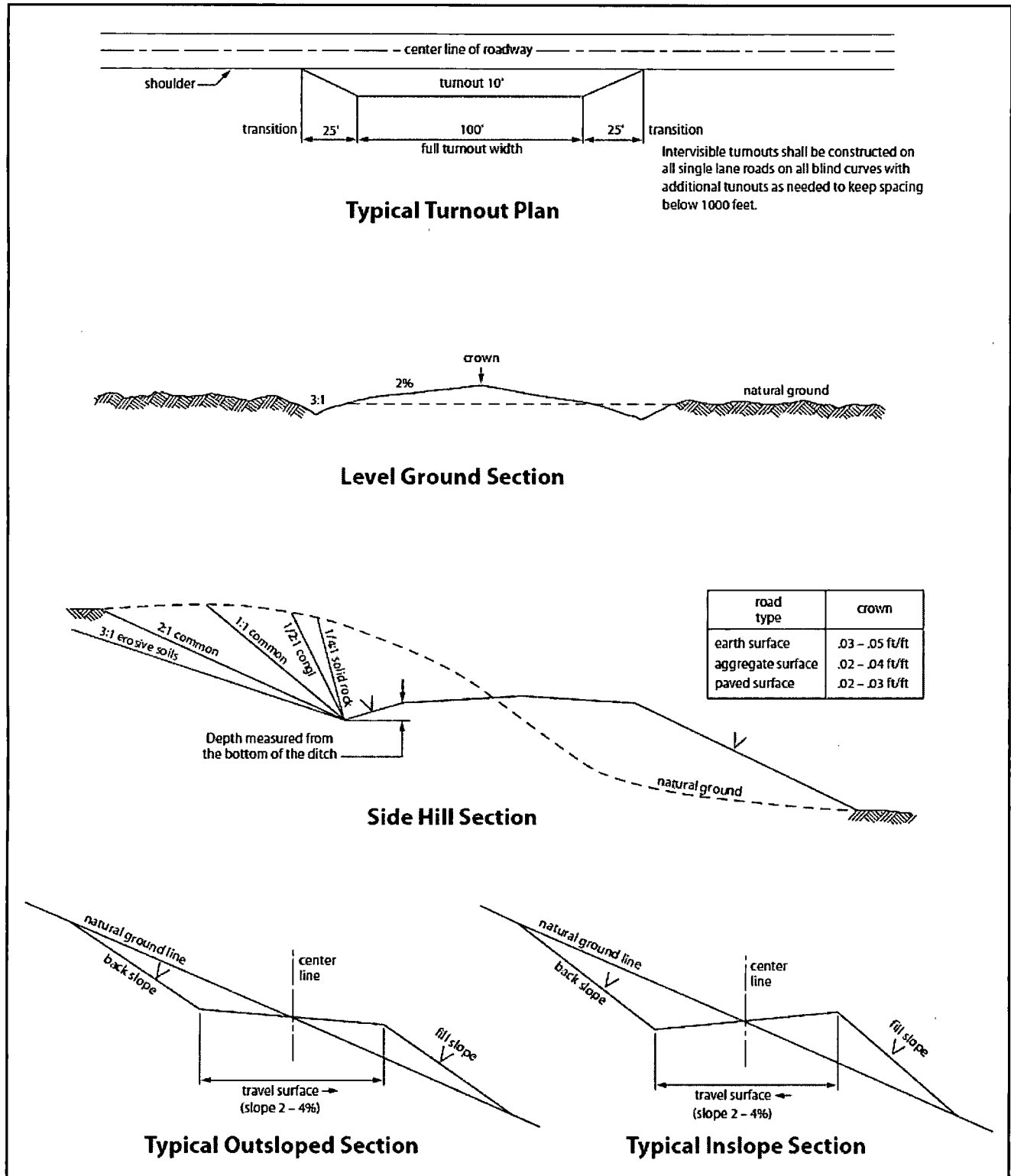


Figure 1. Cross-sections and plans for typical road sections representative of BLM resource or FS local and higher-class roads.

VII. DRILLING

A. DRILLING OPERATIONS REQUIREMENTS

The BLM is to be notified in advance for a representative to witness:

- a. Spudding well (minimum of 24 hours)
- b. Setting and/or Cementing of all casing strings (minimum of 4 hours)
- c. BOPE tests (minimum of 4 hours)

☒ **Eddy County**

Call the Carlsbad Field Office, 620 East Greene St., Carlsbad, NM 88220,
(575) 361-2822

1. A Hydrogen Sulfide (H₂S) Drilling Plan shall be activated 500 feet prior to drilling into the **Delaware** formation. **As a result, the Hydrogen Sulfide area must meet Onshore Order 6 requirements, which includes equipment and personnel/public protection items. If Hydrogen Sulfide is encountered, please provide measured values and formations to the BLM.**
2. Unless the production casing has been run and cemented or the well has been properly plugged, the drilling rig shall not be removed from over the hole without prior approval. **If the drilling rig is removed without approval – an Incident of Non-Compliance will be written and will be a “Major” violation.**
3. Floor controls are required for 3M or Greater systems. These controls will be on the rig floor, unobstructed, readily accessible to the driller and will be operational at all times during drilling and/or completion activities. Rig floor is defined as the area immediately around the rotary table; the area immediately above the substructure on which the draw works is located, this does not include the dog house or stairway area.
4. **The record of the drilling rate along with the GR/N well log run from TD to surface (horizontal well – vertical portion of hole) shall be submitted to the BLM office as well as all other logs run on the borehole 30 days from completion. If available, a digital copy of the logs is to be submitted in addition to the paper copies. The top and bottom of Salt are to be recorded on the Completion Report.**

B. CASING

Changes to the approved APD casing program need prior approval if the items substituted are of lesser grade or different casing size. The Operator can exchange the components of the proposal with that of superior strength (i.e. changing from J-55 to N-80, or from 36# to 40#). Changes to the approved cement program need prior approval if the altered cement plan has less volume or strength or if the changes are substantial (i.e. Multistage tool, ECP, etc.).

Centralizers required on surface casing per Onshore Order 2.III.B.1.f.

Wait on cement (WOC) time prior to drilling out for a primary cement job will be a minimum 18 hours for a water basin, 24 hours in the potash area, or 500 pounds compressive strength, whichever is greater for all casing strings. DURING THIS WOC TIME, NO DRILL PIPE, ETC. SHALL BE RUN IN THE HOLE. Provide compressive strengths including hours to reach required 500 pounds compressive strength prior to cementing each casing string. IF OPERATOR DOES NOT HAVE THE WELL SPECIFIC CEMENT DETAILS ONSITE PRIOR TO PUMPING THE CEMENT FOR EACH CASING STRING, THE WOC WILL BE 30 HOURS. See individual casing strings for details regarding lead cement slurry requirements.

No pea gravel permitted for remedial or fall back remedial without prior authorization from the BLM engineer.

Medium Cave/Karst

Possibility of water flows in the Salado, Castile, and Delaware.

Possibility of lost circulation in the Salado and Delaware.

1. The 13-3/8 inch surface casing shall be set at approximately 400 feet and cemented to the surface. **If salt is encountered, set casing at least 25 feet above the salt. Excess calculates to 20% - Additional cement may be required.**
 - a. If cement does not circulate to the surface, the appropriate BLM office shall be notified and a temperature survey utilizing an electronic type temperature survey with surface log readout will be used or a cement bond log shall be run to verify the top of the cement. Temperature survey will be run a minimum of six hours after pumping cement and ideally between 8-10 hours after completing the cement job.
 - b. **Wait on cement (WOC) time for a primary cement job is to include the lead cement slurry.**
 - c. Wait on cement (WOC) time for a remedial job will be a minimum of 4 hours after bringing cement to surface or 500 pounds compressive strength, whichever is greater.

- d. If cement falls back, remedial cementing will be done prior to drilling out that string.
2. The minimum required fill of cement behind the 9-5/8 inch intermediate casing is:
 - ☒ Cement to surface. If cement does not circulate see B.1.a, c-d above. **Wait on cement (WOC) time for a primary cement job is to include the lead cement slurry due to cave/karst.**

If 75% or greater lost circulation occurs while drilling the intermediate casing hole, the cement on the production casing must come to surface.

Centralizers approved as written.

3. The minimum required fill of cement behind the 5-1/2 inch production casing is:
 - ☒ Cement should tie-back at least 200 feet into previous casing string. Operator shall provide method of verification.
4. If hardband drill pipe is rotated inside casing, returns will be monitored for metal. If metal is found in samples, drill pipe will be pulled and rubber protectors which have a larger diameter than the tool joints of the drill pipe will be installed prior to continuing drilling operations.

C. PRESSURE CONTROL

1. All blowout preventer (BOP) and related equipment (BOPE) shall comply with well control requirements as described in Onshore Oil and Gas Order No. 2 and API RP 53 Sec. 17.
2. Variance approved to use flex line from BOP to choke manifold. Check condition of flexible line from BOP to choke manifold, replace if exterior is damaged or if line fails test. Line to be as straight as possible with no hard bends and is to be anchored according to Manufacturer's requirements. The flexible hose can be exchanged with a hose of equal size and equal or greater pressure rating. **Anchor requirements, specification sheet and hydrostatic pressure test certification matching the hose in service, to be onsite for review. These documents shall be posted in the company man's trailer and on the rig floor.** If the BLM inspector questions the straightness of the hose, a BLM engineer will be contacted and will review in the field or via picture supplied by inspector to determine if changes are required (operator shall expect delays if this occurs).

3. Minimum working pressure of the blowout preventer (BOP) and related equipment (BOPE) required for drilling below the surface casing shoe shall be **2000 (2M)** psi.
 - a. **For surface casing only:** If the BOP/BOPE is to be tested against casing, the wait on cement (WOC) time for that casing is to be met (see WOC statement at start of casing section). Independent service company required.
4. Minimum working pressure of the blowout preventer (BOP) and related equipment (BOPE) required for drilling below the **9-5/8** intermediate casing shoe shall be **3000 (3M)** psi.
5. The appropriate BLM office shall be notified a minimum of 4 hours in advance for a representative to witness the tests.
 - a. In a water basin, for all casing strings utilizing slips, these are to be set as soon as the crew and rig are ready and any fallback cement remediation has been done. The casing cut-off and BOP installation can be initiated four hours after installing the slips, which will be approximately six hours after bumping the plug. For those casing strings not using slips, the minimum wait time before cut-off is eight hours after bumping the plug. BOP/BOPE testing can begin after cut-off or once cement reaches 500 psi compressive strength (including lead when specified), whichever is greater. However, if the float does not hold, cut-off cannot be initiated until cement reaches 500 psi compressive strength (including lead when specified).
 - b. The tests shall be done by an independent service company utilizing a test plug **not a cup or J-packer**. The operator also has the option of utilizing an independent tester to test without a plug (i.e. against the casing) pursuant to Onshore Order 2 with the pressure not to exceed 70% of the burst rating for the casing. Any test against the casing must meet the WOC time for water basin (18 hours) or potash (24 hours) or 500 pounds compressive strength, whichever is greater, prior to initiating the test (see casing segment as lead cement may be critical item).
 - c. The test shall be run on a 5000 psi chart for a 2-3M BOP/BOP, on a 10000 psi chart for a 5M BOP/BOPE and on a 15000 psi chart for a 10M BOP/BOPE. If a linear chart is used, it shall be a one hour chart. A circular chart shall have a maximum 2 hour clock.
 - d. The results of the test shall be reported to the appropriate BLM office.
 - e. All tests are required to be recorded on a calibrated test chart. **A copy of the BOP/BOPE test chart and a copy of independent service company test will be submitted to the appropriate BLM office.**

- f. The BOP/BOPE test shall include a low pressure test from 250 to 300 psi. The test will be held for a minimum of 10 minutes if test is done with a test plug and 30 minutes without a test plug. This test shall be performed prior to the test at full stack pressure.

D. DRILL STEM TEST

If drill stem tests are performed, Onshore Order 2.III.D shall be followed.

E. WASTE MATERIAL AND FLUIDS

All waste (i.e. drilling fluids, trash, salts, chemicals, sewage, gray water, etc.) created as a result of drilling operations and completion operations shall be safely contained and disposed of properly at a waste disposal facility. No waste material or fluid shall be disposed of on the well location or surrounding area.

Porto-johns and trash containers will be on-location during fracturing operations or any other crew-intensive operations.

JAM 120413

VIII. PRODUCTION (POST DRILLING)

A. WELL STRUCTURES & FACILITIES

Placement of Production Facilities

Production facilities should be placed on the well pad to allow for maximum interim recontouring and revegetation of the well location.

Exclosure Netting (Open-top Tanks)

Immediately following active drilling or completion operations, the operator will take actions necessary to prevent wildlife and livestock access, including avian wildlife, to all open-topped tanks that contain or have the potential to contain salinity sufficient to cause harm to wildlife or livestock, hydrocarbons, or Resource Conservation and Recovery Act of 1976-exempt hazardous substances. At a minimum, the operator will net, screen, or cover open-topped tanks to exclude wildlife and livestock and prevent mortality. If the operator uses netting, the operator will cover and secure the open portion of the tank to prevent wildlife entry. The operator will net, screen, or cover the tanks until the operator removes the tanks from the location or the tanks no longer contain substances that could be harmful to wildlife or livestock. Use a maximum netting mesh size of 1 ½ inches. The netting must not be in contact with fluids and must not have holes or gaps.

Chemical and Fuel Secondary Containment and Exclosure Screening

The operator will prevent all hazardous, poisonous, flammable, and toxic substances from coming into contact with soil and water. At a minimum, the operator will install and maintain an impervious secondary containment system for any tank or barrel containing hazardous, poisonous, flammable, or toxic substances sufficient to contain the contents of the tank or barrel and any drips, leaks, and anticipated precipitation. The operator will dispose of fluids within the containment system that do not meet applicable state or U. S. Environmental Protection Agency livestock water standards in accordance with state law; the operator must not drain the fluids to the soil or ground. The operator will design, construct, and maintain all secondary containment systems to prevent wildlife and livestock exposure to harmful substances. At a minimum, the operator will install effective wildlife and livestock exclosure systems such as fencing, netting, expanded metal mesh, lids, and grate covers. Use a maximum netting mesh size of 1 ½ inches.

Open-Vent Exhaust Stack Exclosures

The operator will construct, modify, equip, and maintain all open-vent exhaust stacks on production equipment to prevent birds and bats from entering, and to discourage perching, roosting, and nesting. (*Recommended exclosure structures on open-vent exhaust stacks are in the shape of a cone.*) Production equipment includes, but may not be limited to, tanks, heater-treaters, separators, dehydrators, flare stacks, in-line units, and compressor mufflers.

Containment Structures

Proposed production facilities such as storage tanks and other vessels will have a secondary containment structure that is constructed to hold the capacity of 1.5 times the

largest tank, plus freeboard to account for precipitation, unless more stringent protective requirements are deemed necessary.

Painting Requirement

All above-ground structures including meter housing that are not subject to safety requirements shall be painted a flat non-reflective paint color, **Shale Green** from the BLM Standard Environmental Color Chart (CC-001: June 2008).

B. PIPELINES (not applied for in APD)

C. ELECTRIC LINES (A Right-of-Way will be required from the BLM prior to constructing any electric lines)

IX. INTERIM RECLAMATION

During the life of the development, all disturbed areas not needed for active support of production operations should undergo interim reclamation in order to minimize the environmental impacts of development on other resources and uses.

Within six (6) months of well completion, operators should work with BLM surface management specialists (Jim Amos: 575-234-5909) to devise the best strategies to reduce the size of the location. Interim reclamation should allow for remedial well operations, as well as safe and efficient removal of oil and gas.

During reclamation, the removal of caliche is important to increasing the success of revegetating the site. Removed caliche that is free of contaminants may be used for road repairs, fire walls or for building other roads and locations. In order to operate the well or complete workover operations, it may be necessary to drive, park and operate on restored interim vegetation within the previously disturbed area. Disturbing revegetated areas for production or workover operations will be allowed. If there is significant disturbance and loss of vegetation, the area will need to be revegetated. Communicate with the appropriate BLM office for any exceptions/exemptions if needed.

All disturbed areas after they have been satisfactorily prepared need to be reseeded with the seed mixture provided below.

Upon completion of interim reclamation, the operator shall submit a Sundry Notices and Reports on Wells, Subsequent Report of Reclamation (Form 3160-5).

X. FINAL ABANDONMENT & RECLAMATION

At final abandonment, well locations, production facilities, and access roads must undergo "final" reclamation so that the character and productivity of the land are restored.

Earthwork for final reclamation must be completed within six (6) months of well plugging. All pads, pits, facility locations and roads must be reclaimed to a satisfactory revegetated, safe, and stable condition, unless an agreement is made with the landowner or BLM to keep the road and/or pad intact.

After all disturbed areas have been satisfactorily prepared, these areas need to be revegetated with the seed mixture provided below. Seeding should be accomplished by drilling on the contour whenever practical or by other approved methods. Seeding may need to be repeated until revegetation is successful, as determined by the BLM.

Operators shall contact a BLM surface protection specialist prior to surface abandonment operations for site specific objectives (Jim Amos: 575-234-5909).

Ground-level Abandoned Well Marker to avoid raptor perching: Upon the plugging and subsequent abandonment of the well, the well marker will be installed at ground level on a plate containing the pertinent information for the plugged well.

Seed Mixture 1, for Loamy Sites

The holder shall seed all disturbed areas with the seed mixture listed below. The seed mixture shall be planted in the amounts specified in pounds of pure live seed (PLS)* per acre. There shall be no primary or secondary noxious weeds in the seed mixture. Seed will be tested and the viability testing of seed will be done in accordance with State law(s) and within nine (9) months prior to purchase. Commercial seed will be either certified or registered seed. The seed container will be tagged in accordance with State law(s) and available for inspection by the authorized officer.

Seed will be planted using a drill equipped with a depth regulator to ensure proper depth regulator to ensure proper depth of planting where drilling is possible. The seed mixture will be evenly and uniformly planted over the disturbed area (small/heavier seeds have a tendency to drop the bottom of the drill and are planted first). The holder shall take appropriate measures to ensure this does not occur. Where drilling is not possible, seed will be broadcast and the area shall be raked or chained to cover the seed. When broadcasting the seed, the pounds per acre are to be doubled. The seeding will be repeated until a satisfactory stand is established as determined by the authorized officer. Evaluation of growth will not be made before completion of at least one full growing season after seeding.

Species to be planted in pounds of pure live seed* per acre:

| <u>Species</u> | <u>lb/acre</u> |
|---|----------------|
| Plains lovegrass (<i>Eragrostis intermedia</i>) | 0.5 |
| Sand dropseed (<i>Sporobolus cryptandrus</i>) | 1.0 |
| Sideoats grama (<i>Bouteloua curtipendula</i>) | 5.0 |
| Plains bristlegrass (<i>Setaria macrostachya</i>) | 2.0 |

*Pounds of pure live seed:

Pounds of seed x percent purity x percent germination = pounds pure live seed