

res  
12/16/2013

Form 3160-3  
(March 2012)

OCD Artesia

FORM APPROVED  
OMB No. 1004-0157  
Expires October 31, 2014

UNITED STATES  
DEPARTMENT OF THE INTERIOR  
BUREAU OF LAND MANAGEMENT

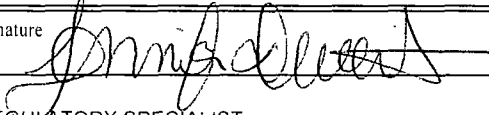
APPLICATION FOR PERMIT TO DRILL OR REENTER

1a. Type of work: <input checked="" type="checkbox"/> DRILL <input type="checkbox"/> REENTER		5. Lease Serial No. NMNM-0025527
1b. Type of Well: <input checked="" type="checkbox"/> Oil Well <input type="checkbox"/> Gas Well <input type="checkbox"/> Other <input type="checkbox"/> Single Zone <input type="checkbox"/> Multiple Zone		6. If Indian, Allottee or Tribe Name
2. Name of Operator OXY USA WTP LP		7. If Unit or CA Agreement, Name and No.
3a. Address PO BOX 4294 HOUSTON, TX 77210		8. Lease Name and Well No. YESO VIKING FEDERAL #24 < 39812 >
3b. Phone No. (include area code) 713-513-6640		9. API Well No. 30-015-41881
4. Location of Well (Report location clearly and in accordance with any State requirements.)* At surface 2409' FSL & 876' FEL At proposed prod. zone 2160' FSL & 860' FEL		10. Field and Pool, or Exploratory REDLAKE, GLORIETA-YESO, NE < 96836 >
14. Distance in miles and direction from nearest town or post office* 10 MILES SOUTHEAST OF ARTESIA, NM		11. Sec., T. R. M. or Blk. and Survey or Area I, SEC 23, T17S-R27E
15. Distance from proposed* 876' location to nearest property or lease line, ft. (Also to nearest drig. unit line, if any)	16. No. of acres in lease 640	12. County or Parish EDDY COUNTY
17. Spacing Unit dedicated to this well 40	18. Distance from proposed location* 242' to nearest well, drilling, completed, applied for, on this lease, ft.	13. State NM
19. Proposed Depth 5000' MD/ 5000' TVD	20. BLM/BIA Bond No. on file ESB000226 / NMB000862	
21. Elevations (Show whether DF, KDB, RT, GL, etc.) 3531' GL	22. Approximate date work will start* 03/29/2014	23. Estimated duration 7 DAYS

24. Attachments

The following, completed in accordance with the requirements of Onshore Oil and Gas Order No.1, must be attached to this form:

- |  |   |
|--|---|
| 1. Well plat certified by a registered surveyor.   | 4. Bond to cover the operations unless covered by an existing bond on file (see Item 20 above). |
| 2. A Drilling Plan.  | 5. Operator certification   |
| 3. A Surface Use Plan (if the location is on National Forest System Lands, the SUPO must be filed with the appropriate Forest Service Office). | 6. Such other site specific information and/or plans as may be required by the BLM.             |

25. Signature 	Name (Printed/Typed) JENNIFER DUARTE (jennifer_duarte@oxy.com)	Date 09/17/2013
Title REGULATORY SPECIALIST		

Approved by (Signature) /s/ James Stovall	Name (Printed/Typed)	Date DEC 6 2013
Title FIELD MANAGER	Office CARLSBAD FIELD OFFICE	

Application approval does not warrant or certify that the applicant holds legal or equitable title to those rights in the subject lease which would entitle the applicant to conduct operations thereon.  
Conditions of approval, if any, are attached.

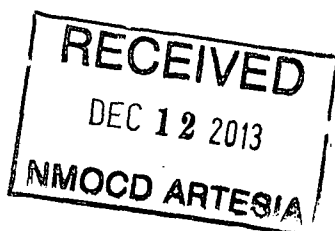
APPROVAL FOR TWO YEARS

Title 18 U.S.C. Section 1001 and Title 43 U.S.C. Section 1212, make it a crime for any person knowingly and willfully to make to any department or agency of the United States any false, fictitious or fraudulent statements or representations as to any matter within its jurisdiction.

(Continued on page 2)

\*(Instructions on page 2)

Roswell Controlled Water Basin

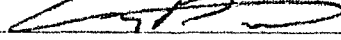


SEE ATTACHED FOR  
CONDITIONS OF APPROVAL

Approval Subject to General Requirements  
& Special Stipulations Attached

### OPERATOR CERTIFICATION

I hereby certify that I, or someone under my direct supervision, have inspected the drill site and access route proposed herein; that I am familiar with the conditions that presently exist; that I have full knowledge of State and Federal laws applicable to this operation; that the statements made in this APD package are, to the best of my knowledge, true and correct; and that the work associated with the operations proposed herein will be performed in conformity with this APD package and the terms and conditions under which it is approved. I also certify that I, or the company I represent, am responsible for the operations conducted under this application. These statements are subject to the provisions of 18 U.S.C. 1001 for the filing of false statements. Executed this 17<sup>th</sup> day of September, 2013.

Name: Anthony D'Addieco   
Position: Reservoir Management Team Leader  
Address: 5 Greenway Plaza, Suite 110, Houston, TX 77046  
Telephone: 713-350-4964  
E-mail: (optional): Anthony\_DAddieco@oxy.com  
Company: Occidental Permian LP / OXY USA Inc / OXY USA WTP LP  
Field Representative (if not above signatory): Dusty Weaver  
Address (If different from above): P.O. Box 50250 Midland, TX 79710  
Telephone (if different from above): 432-685-5723  
E-mail (if different from above): calvin\_weaver@oxy.com

DISTRICT I  
1625 N. French Dr., Hobbs, NM 88240  
Phone: (575) 393-6161 Fax: (575) 393-0720  
DISTRICT II  
811 S. First St., Artesia, NM 88210  
Phone: (575) 748-1283 Fax: (575) 748-9720  
DISTRICT III  
1000 Rio Brazos Road, Aztec, NM 87410  
Phone: (505) 334-6178 Fax: (505) 334-6170  
DISTRICT IV  
1220 S. St. Francis Dr., Santa Fe, NM 87505  
Phone: (505) 476-3460 Fax: (505) 476-3462

State of New Mexico  
Energy, Minerals & Natural Resources Department  
OIL CONSERVATION DIVISION  
1220 South St. Francis Dr.  
Santa Fe, New Mexico 87505

Form C-102  
Revised August 1, 2011  
Submit one copy to appropriate  
District Office

☐ AMENDED REPORT

WELL LOCATION AND ACREAGE DEDICATION PLAT

API Number <b>30-015-41881</b>	Pool Code <b>96836</b>	Pool Name <b>Red Lake, Gloria-Yeso, NE</b>
Property Code <b>39812</b>	Property Name <b>YESO VIKING FEDERAL</b>	Well Number <b>24</b>
OGRID No. <b>192463</b>	Operator Name <b>OXY U.S.A. WTP LP</b>	Elevation <b>3531'</b>

Surface Location

UL or lot No.	Section	Township	Range	Lot Idn	Feet from the	North/South line	Feet from the	East/West line	County
I	23	17-S	27-E		2409	SOUTH	876	EAST	EDDY

Bottom Hole Location If Different From Surface

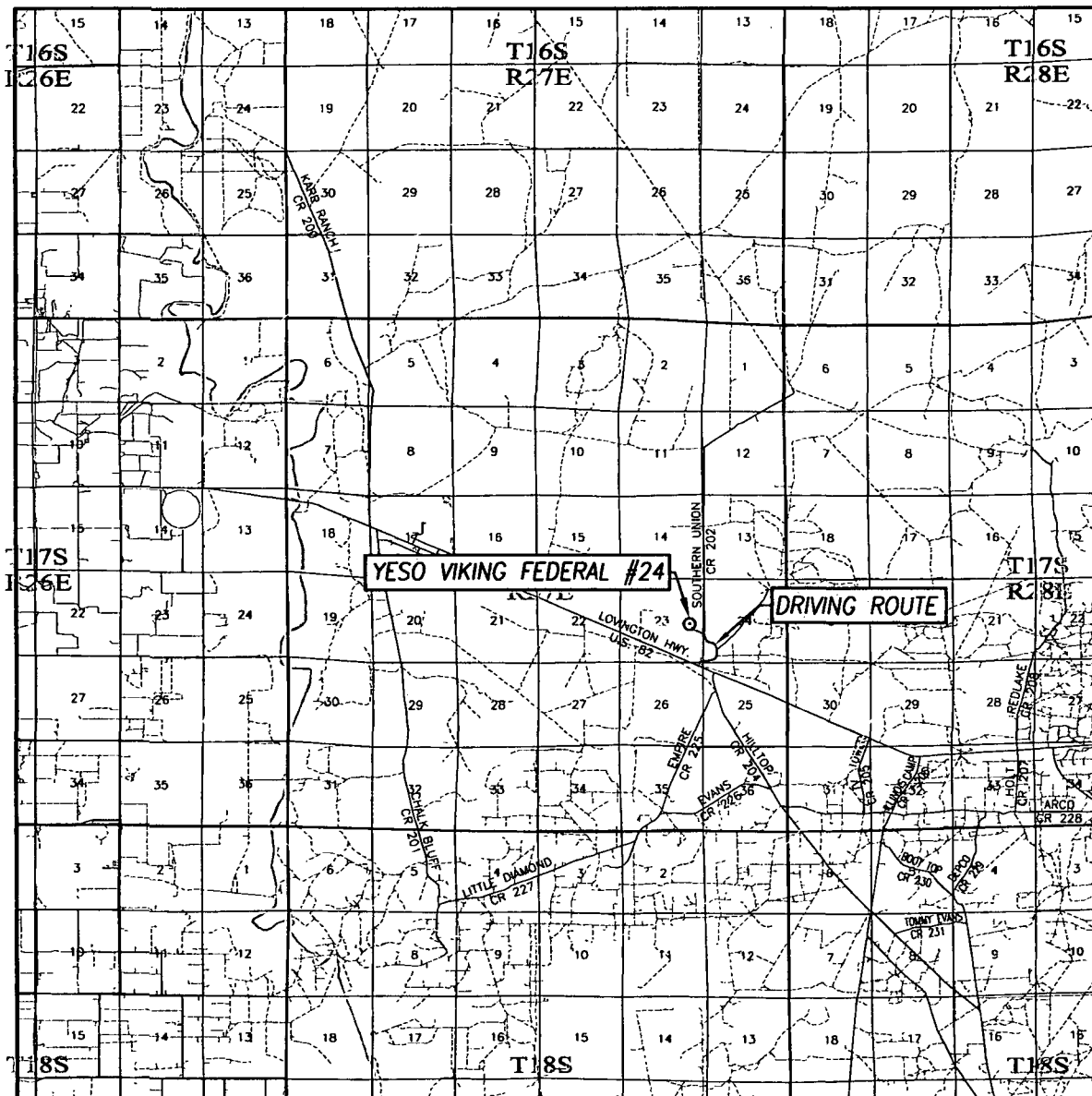
UL or lot No.	Section	Township	Range	Lot Idn	Feet from the	North/South line	Feet from the	East/West line	County
I	23	17-S	27-E		2160	SOUTH	860	EAST	EDDY

Dedicated Acres	Joint or Infill	Consolidation Code	Order No
<b>40</b>			

NO ALLOWABLE WILL BE ASSIGNED TO THIS COMPLETION UNTIL ALL INTERESTS HAVE BEEN CONSOLIDATED OR A NON-STANDARD UNIT HAS BEEN APPROVED BY THE DIVISION

<p style="text-align: center;"><b>CORNER COORDINATES TABLE</b></p> <p>A - Y=661870.6 N, X=527261.7 E B - Y=661860.3 N, X=528577.9 E C - Y=660543.5 N, X=528577.4 E D - Y=660555.7 N, X=527259.8 E</p> <p><b>GEODETIC COORDINATES</b> NAD 27 NME</p> <p><b>SURFACE LOCATION</b> Y=661644.0 N X=527701.6 E</p> <p><b>BOTTOM HOLE LOCATION</b> Y=661395.1 N X=527718.0 E</p> <p><b>GRID AZ.=176°14'53"</b> <b>HORIZ. DIST.=249.5'</b></p> <p><b>DETAIL</b></p>	<p style="text-align: center;"><b>OPERATOR CERTIFICATION</b></p> <p>I hereby certify that the information herein is true and complete to the best of my knowledge and belief, and that this organization either owns a working interest or unleased mineral interest in the land including the proposed bottom hole location or has a right to drill this well at this location pursuant to a contract with an owner of such mineral or working interest, or to a voluntary pooling agreement or a compulsory pooling order heretofore entered by the division.</p> <p><i>Jennifer Duarte</i> Signature Date <b>9/5/13</b></p> <p><b>Jennifer Duarte</b> Printed Name</p> <p><b>jennifer-duarte@oxy.com</b> E-mail Address</p> <p style="text-align: center;"><b>SURVEYOR CERTIFICATION</b></p> <p>I hereby certify that the well location shown on this plat was plotted from field notes of actual surveys made by me or under my supervision, and that the same is true and correct to the best of my belief.</p> <p style="text-align: center;"><b>MAY 21, 2013</b></p> <p>Date of Survey</p> <p>Signature of Professional Surveyor:</p> <p><b>RONALD J. EIDSON</b> NEW MEXICO 3239 RECEIVED 6/11/2013</p> <p>Certificate Number <b>12641</b> Surveyor <b>Ronald J. Eidson</b> 3239</p> <p>BKL JWSC W.O., 13.11 0455</p>
---	--

# VICINITY MAP



SCALE: 1" = 2 MILES  
FOR DRIVING ROUTE DIRECTIONS  
SEE LOCATION VERIFICATION MAP

SEC. 23 TWP. 17-S RGE. 27-E

SURVEY N.M.P.M.

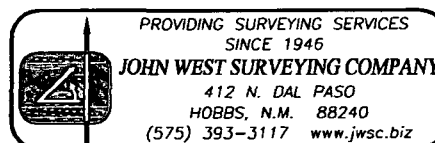
COUNTY EDDY STATE NEW MEXICO

DESCRIPTION 2409' FSL & 876' FEL

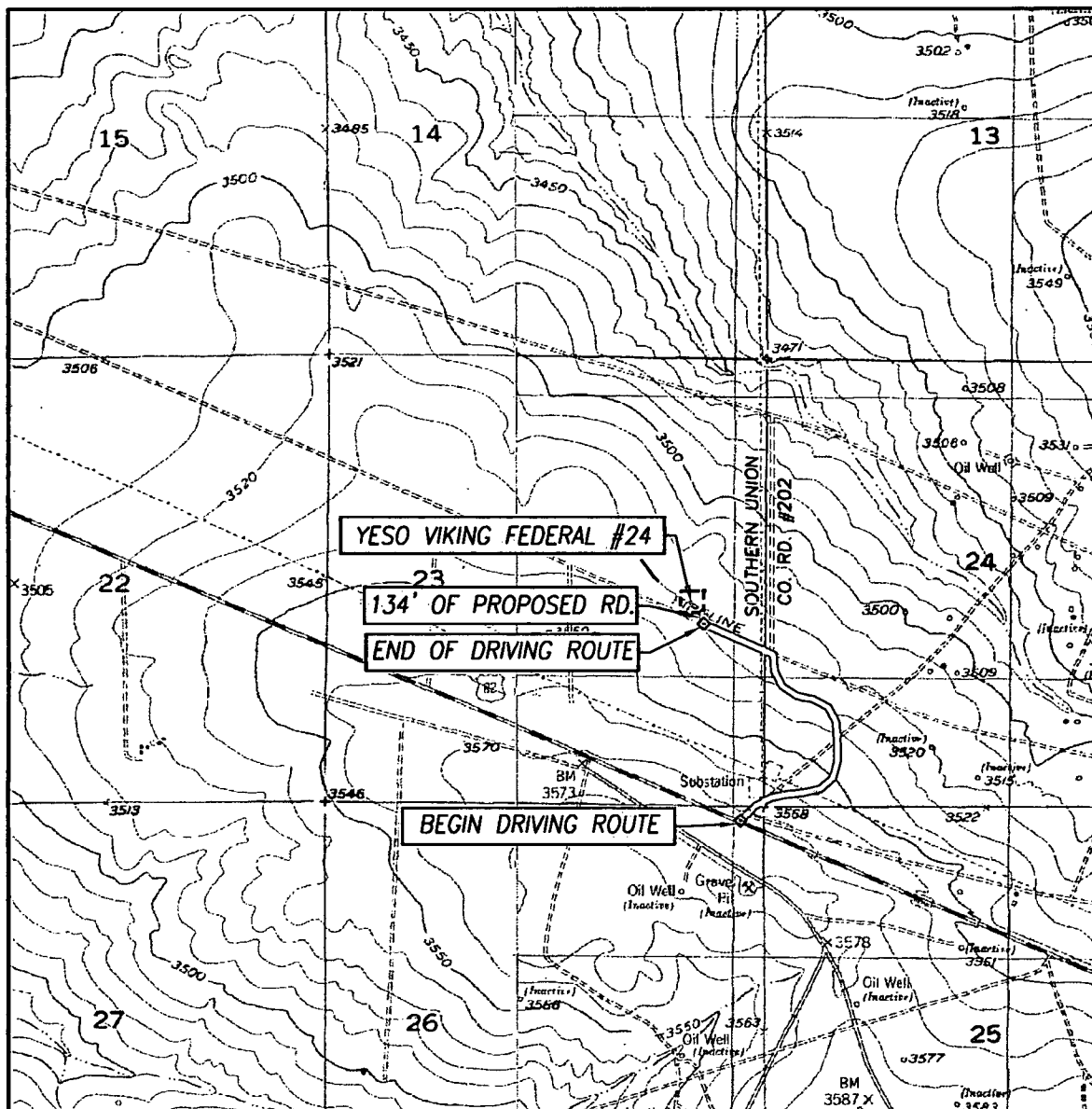
ELEVATION 3531'

OPERATOR OXY U.S.A. INC.

LEASE YESO VIKING FEDERAL



# LOCATION VERIFICATION MAP



SCALE: 1" = 2000'

CONTOUR INTERVAL:  
SPRING LAKE, N.M. - 10'  
RED LAKE, N.M. - 10'

SEC. 23 TWP. 17-S RGE. 27-E

SURVEY N.M.P.M.

COUNTY EDDY STATE NEW MEXICO

DESCRIPTION 2409' FSL & 876' FEL

ELEVATION 3531'

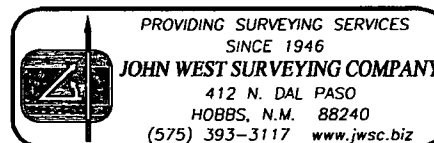
OPERATOR OXY U.S.A. INC.

LEASE YESO VIKING FEDERAL

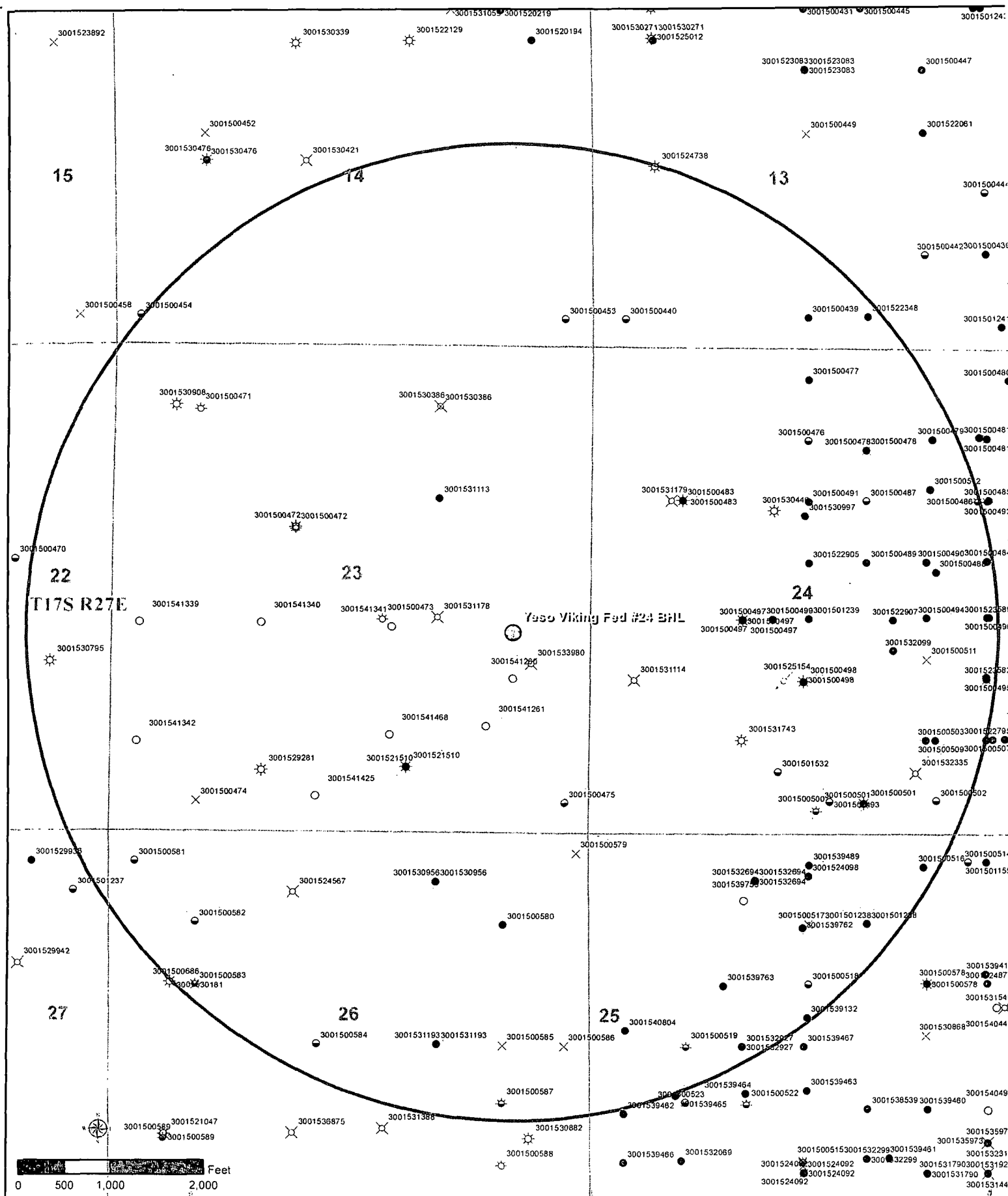
U.S.G.S. TOPOGRAPHIC MAP  
SPRING LAKE, N.M.

DIRECTIONS TO YESO VIKING FEDERAL #24:

FROM THE INTERSECTION OF U.S. HIGHWAY 82 AND  
CO. RD. 202 (SOUTHERN UNION), GO NORTH ON  
CO. RD. 202 APPROX. 0.5 MILES; TURN LEFT AND GO  
NORTHWEST ON A LEASE ROAD APPROX. 0.2 MILES TO  
STAKED ROAD; FOLLOW ROAD SURVEY STAKES NORTH  
134 FEET TO LOCATION.



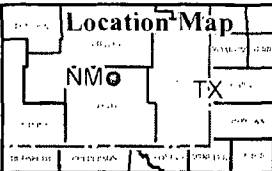




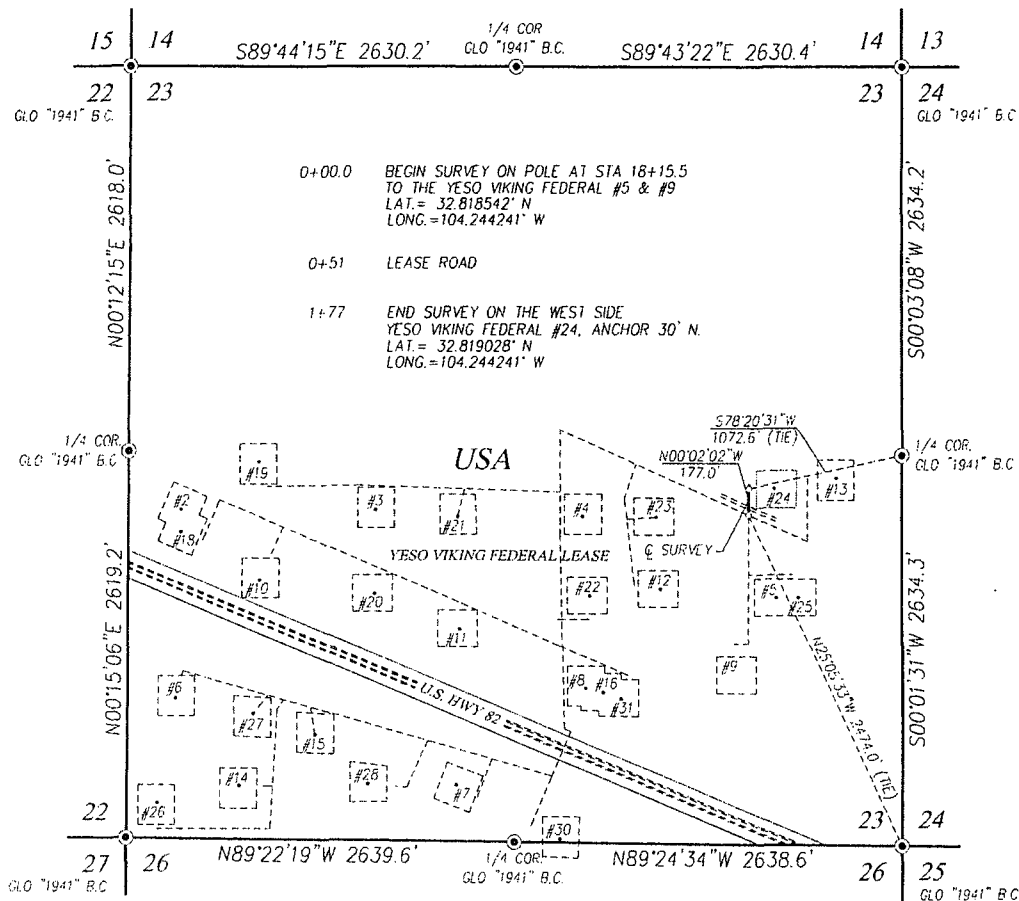
**Permian Primary**  
**New Mexico**  
**Eddy & Lea Counties**  
**Oxy Wells with**  
**1 Mile Radius**

- |            |             |         |                  |
|------------|-------------|---------|------------------|
| ● OXY WELL | ☼ GAS SHOWS | ☼ SUS   | ✕ ABAND-LOC      |
| ☼ GAS      | ☼ O&G SHOWS | ✕ AGW   | ✕ ABAND-NO SHOWS |
| ● OIL      | ○ LOC       | ☼ AOW   | ✕ INJ-NO SHOWS   |
| ☼ O&G      |             | ☼ AO&GW | ● OTHER          |
- 
- |            |                    |
|------------|--------------------|
| ▭ Sections | ▭ Township & Range |
| ▭ County   | ▭ 1mi Buffer       |

**Coordinate System Information**  
 Geographic Coordinate System North American 1927  
 Datum: North American 1927  
 NAD 1927 State Plane New Mexico FIPS 3001  
 Projection: Transverse Mercator  
 False Easting: 500000.000000  
 False Northing: 0.000000  
 Central Meridian: -104.333333  
 Scale Factor: 0.999909  
 Latitude Of Origin: 31.000000  
 Linear Unit: Feet US



SECTION 23, TOWNSHIP 17 SOUTH, RANGE 27 EAST, N.M.P.M.,  
EDDY COUNTY NEW MEXICO



DESCRIPTION

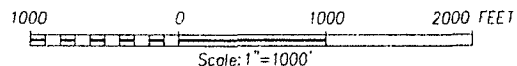
SURVEY OF A STRIP OF LAND 50.0 FEET WIDE AND 177.0 FEET OR 0.034 MILES IN LENGTH CROSSING USA LAND IN SECTION 23, TOWNSHIP 17 SOUTH, RANGE 27 EAST, N.M.P.M., EDDY COUNTY, NEW MEXICO, AND BEING 25.0 FEET LEFT AND 25.0 FEET RIGHT OF THE ABOVE PLATTED CENTERLINE SURVEY.

NOTE

- 1) BEARINGS SHOWN HEREON ARE MERCATOR GRID AND CONFORM TO THE NEW MEXICO COORDINATE SYSTEM "NEW MEXICO EAST ZONE" NORTH AMERICAN DATUM 1983. DISTANCES ARE SURFACE VALUES.
- 2) LATITUDE AND LONGITUDE VALUES SHOWN HEREON ARE RELATIVE TO THE NORTH AMERICAN DATUM 1983 (NAD83).

LEGEND

- DENOTES FOUND CORNER AS NOTED
- ⊗ DENOTES CALCULATED CORNER



I, RONALD J. EIDSON, NEW MEXICO PROFESSIONAL SURVEYOR No. 3239, DO HEREBY CERTIFY THAT THIS SURVEY PLAT AND THE ACTUAL SURVEY ON THE GROUND UPON WHICH IT IS BASED WERE PERFORMED BY ME OR UNDER MY DIRECT SUPERVISION; THAT I AM RESPONSIBLE FOR THIS SURVEY; THAT THIS SURVEY MEETS THE MINIMUM STANDARDS FOR SURVEYING IN NEW MEXICO; AND THAT IT IS TRUE AND CORRECT TO THE BEST OF MY KNOWLEDGE AND BELIEF.

RONALD J. EIDSON

DATE: 06/24/2013



PROVIDING SURVEYING SERVICES  
SINCE 1946  
JOHN WEST SURVEYING COMPANY  
412 N. DAL PASO  
HOBBS, N.M. 88240  
(575) 393-3117 www.jwsc.biz

**OXY U.S.A. INC.**

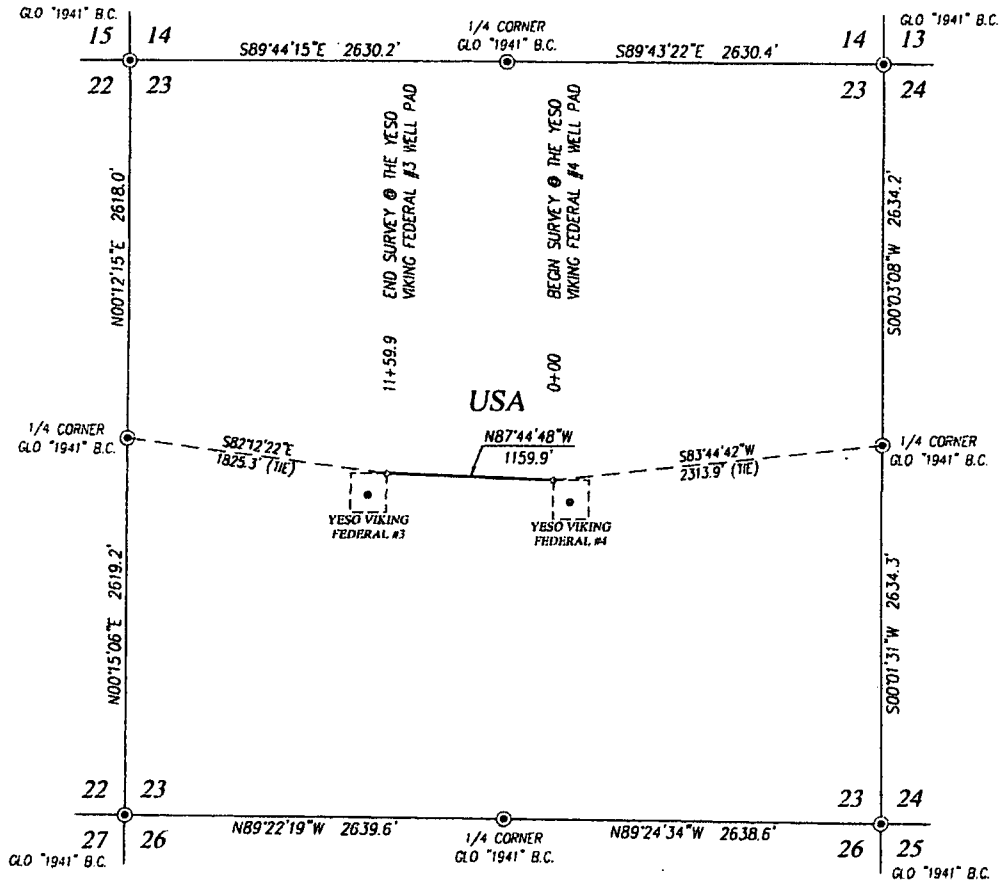
SURVEY OF AN ELECTRIC LINE  
TO THE YESO VIKING FEDERAL #24  
WELL CROSSING SECTION 23,  
TOWNSHIP 17 SOUTH, RANGE 27 EAST, N.M.P.M.  
EDDY COUNTY, NEW MEXICO

Survey Date: 06/03/2013	CAD Date: 06/10/13	Drawn By: DSR
W.O. No.: 13110644	Rev:	Rel. W.O.:

Sheet 1 of 1



SECTION 23, TOWNSHIP 17 SOUTH, RANGE 27 EAST, N.M.P.M.,  
EDDY COUNTY  
NEW MEXICO



**DESCRIPTION**

SURVEY OF A STRIP OF LAND 50.0 FEET WIDE AND 1159.9 FEET OR 0.220 MILES IN LENGTH CROSSING  
USA LAND IN SECTION 23, TOWNSHIP 17 SOUTH, RANGE 27 EAST, N.M.P.M., EDDY COUNTY, NEW MEXICO,  
AND BEING 25.0 FEET LEFT AND 25.0 FEET RIGHT OF THE ABOVE PLATTED CENTERLINE SURVEY.

**NOTE**

BEARINGS SHOWN HEREON ARE MERCATOR GRID AND CONFORM TO  
THE NEW MEXICO COORDINATE SYSTEM "NEW MEXICO EAST ZONE"  
NORTH AMERICAN DATUM 1983. DISTANCES ARE SURFACE VALUES.

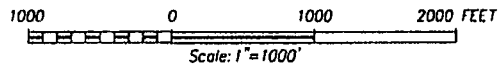
**LEGEND**

⊙ DENOTES FOUND CORNER AS NOTED

I, RONALD J. EIDSON, NEW MEXICO PROFESSIONAL SURVEYOR No. 3239,  
DO HEREBY CERTIFY THAT THIS SURVEY PLAT AND THE ACTUAL SURVEY  
ON THE GROUND UPON WHICH IT IS BASED WERE PERFORMED BY ME OR  
UNDER MY DIRECT SUPERVISION, THAT I AM RESPONSIBLE FOR THIS  
SURVEY, THAT THIS SURVEY MEETS THE MINIMUM STANDARDS FOR  
SURVEYING IN NEW MEXICO AND THAT IT IS TRUE AND CORRECT TO  
THE BEST OF MY KNOWLEDGE AND BELIEF.

RONALD J. EIDSON

DATE: 05/30/2013



**OXY U.S.A. INC.**

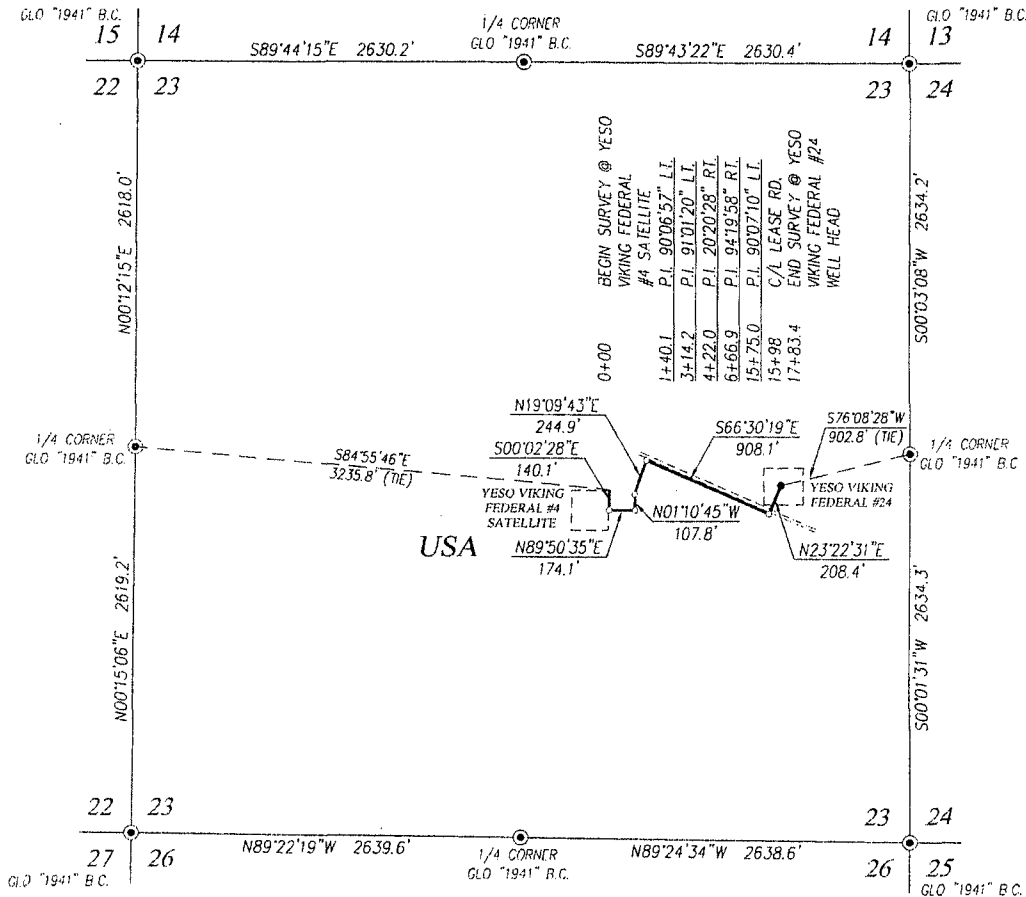
**SURVEY OF A PIPELINE  
CROSSING SECTION 23,  
TOWNSHIP 17 SOUTH, RANGE 27 EAST, N.M.P.M.  
EDDY COUNTY, NEW MEXICO**

Survey Date: 5/10/13	CAD Date: 5/28/13	Drawn By: BKL
W.O. No.: 13110515	Rev.:	Rel. W.O.:

Sheet 1 of 1

PROVIDING SURVEYING SERVICES  
SINCE 1946  
**JOHN WEST SURVEYING COMPANY**  
412 N. DAL PASO  
HOBBS, N.M. 88240  
(575) 393-3117 www.jwsc.biz

SECTION 23, TOWNSHIP 17 SOUTH, RANGE 27 EAST, N.M.P.M.,  
EDDY COUNTY NEW MEXICO



DESCRIPTION

SURVEY OF A STRIP OF LAND 50.0 FEET WIDE AND 1783.4 FEET OR 0.378 MILES IN LENGTH CROSSING  
USA LAND IN SECTION 23, TOWNSHIP 17 SOUTH, RANGE 27 EAST, N.M.P.M., EDDY COUNTY, NEW MEXICO,  
AND BEING 25.0 FEET LEFT AND 25.0 FEET RIGHT OF THE ABOVE PLATTED CENTERLINE SURVEY.

NOTE

BEARINGS SHOWN HEREON ARE MERCATOR GRID AND CONFORM TO  
THE NEW MEXICO COORDINATE SYSTEM "NEW MEXICO EAST ZONE"  
NORTH AMERICAN DATUM 1983. DISTANCES ARE SURFACE VALUES.

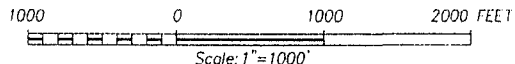
LEGEND

● DENOTES FOUND CORNER AS NOTED

I, RONALD J. EIDSON, NEW MEXICO PROFESSIONAL SURVEYOR No. 3239,  
DO HEREBY CERTIFY THAT THIS SURVEY PLAT AND THE ACTUAL SURVEY  
ON THE GROUND UPON WHICH IT IS BASED, WERE PERFORMED BY ME OR  
UNDER MY DIRECT SUPERVISION, THAT I AM RESPONSIBLE FOR THIS  
SURVEY, THAT THIS SURVEY MEETS THE MINIMUM STANDARDS FOR  
SURVEYING IN NEW MEXICO, AND THAT IT IS TRUE AND CORRECT TO  
THE BEST OF MY KNOWLEDGE AND BELIEF.

RONALD J. EIDSON

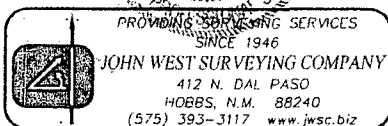
DATE: 06/28/2013



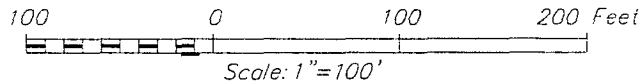
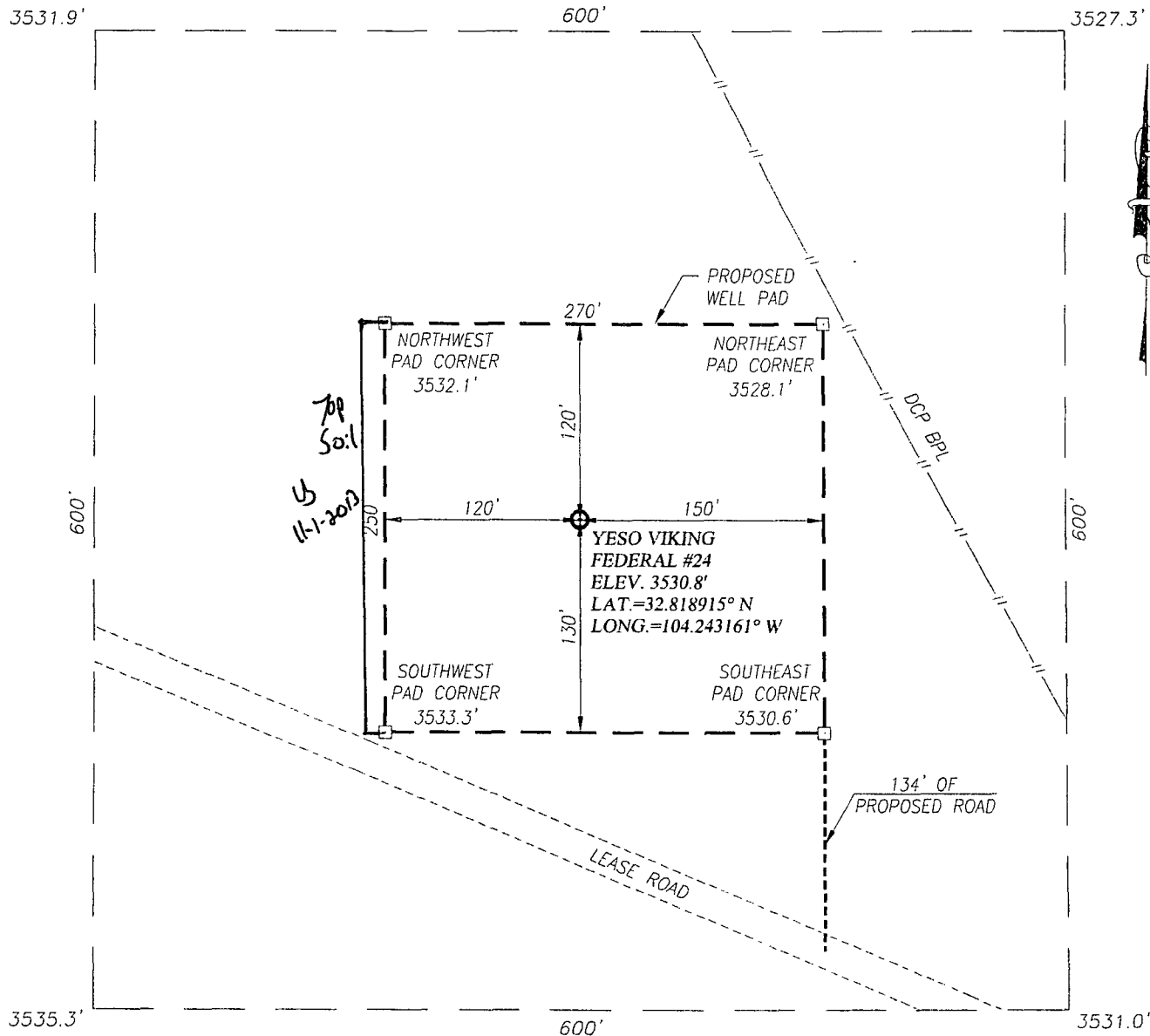
OXY U.S.A. INC.

SURVEY OF A PIPELINE  
CROSSING SECTION 23,  
TOWNSHIP 17 SOUTH, RANGE 27 EAST, N.M.P.M.  
EDDY COUNTY, NEW MEXICO

Survey Date: 6/14/13	CAD Date: 6/27/13	Drawn By: BKL
W.O. No.: 13110707	Rev:	Rel. W.O.:
		Sheet 1 of 1

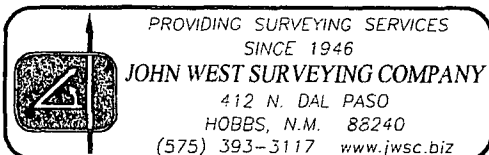


**SECTION 23, TOWNSHIP 17 SOUTH, RANGE 27 EAST, N.M.P.M.**  
**EDDY COUNTY** **NEW MEXICO**



DIRECTIONS TO YESO VIKING FEDERAL #24:

FROM THE INTERSECTION OF U.S. HIGHWAY 82 AND CO. RD. 202 GO NORTH ON CO. RD. 202 APPROX. 0.5 MILES; TURN LEFT AND GO NORTHWEST ON A LEASE ROAD APPROX. 0.2 MILES; FOLLOW ROAD STAKES 134 FEET NORTH TO LOCATION.



**OXY U.S.A. WTP LP**

**YESO VIKING FEDERAL #24 WELL**  
 LOCATED 2409 FEET FROM THE SOUTH LINE  
 AND 876 FEET FROM THE EAST LINE OF SECTION 23,  
 TOWNSHIP 17 SOUTH, RANGE 27 EAST, N.M.P.M.,  
 EDDY COUNTY, NEW MEXICO

Survey Date: 5/21/13	CAD Date: 6/6/13	Drawn By: BKL
W.O. No.: 13110455	Rev: .	Rel. W.O.: Sheet 1 of 1

# OXY USA WTP LP

## APD Data

OPERATOR NAME / NUMBER: OXY USA WTP LP

192463

LEASE NAME / NUMBER: Yeso Viking Federal # 24

Federal Lease No:

STATE: NM

COUNTY: Eddy

SURFACE HOLE LOCATION: 2409' FSL & 876' FEL, Sec 23, T17S, R27E

BOTTOM HOLE LOCATION: 2160' FSL & 860' FEL, Sec 23, T17S, R27E

APPROX GR ELEV: 3531'

EST KB ELEV: 3545' (14' KB-GL)

### 1. GEOLOGIC NAME OF SURFACE FORMATION

a. Permian

### 2. ESTIMATED TOPS OF GEOLOGICAL MARKERS & DEPTHS OF ANTICIPATED FRESH WATER, OIL OR GAS

Formation Name	TVD	Expected Fluids
Quaternary - base of Salt	0' - 170'	Fresh Water
Tansil	170' - 280'	-
Yates	376'	-
Seven Rivers	760'	-
Queen	915'	-
Grayburg	1340'	Oil
San Andres	1690'	Oil/Water
Glorieta	3080'	Oil
Paddock	3130'	Oil
Blinbry	3580'	Oil
Tubb	4533'	Oil
TD	5000'	TD
Abo	5175'	-

A. Fresh Water formation is outcropping and will be covered with the 16" conductor pipe, which will be set at 80' prior to spud.

GREATEST PROJECTED TD: 5009' MD / 5000' TVD

OBJECTIVE: Yeso

### 3. CASING PROGRAM

Surface Casing set at  $\pm$  400' MD/ 400' TVD in a 11" hole filled with 8.4 ppg mud

Interval (MD)	OD (in)	Wt (ppf)	Grade	Conn	ID (in)	Condition	Jt Str (M-lbs)	Burst (psi)	Collapse (psi)	Burst SF	Coll SF	Ten SF
0' - 400'	8.625	24	J55	STC	8.097	New	244	2950	1370	1.42	10.42	2.26

Production Casing set at  $\pm$  5009' MD / 5000' TVD in a 7.875" hole filled 9.6 ppg mud

Interval (MD)	OD (in)	Wt (ppf)	Grade	Conn	ID (in)	Condition	Jt Str (M-lbs)	Burst (psi)	Collapse (psi)	Burst SF	Coll SF	Ten SF
0' - 5,009'	5.5	17	L80	BTC	4.892	New	428	7740	6290	1.28	2.42	2.31

## **Casing Design Assumptions:**

### **Burst Loads**

#### **CSG Test (Surface)**

- Internal: Displacement fluid + 70% CSG Burst rating
- External: Pore Pressure from section TD to surface

#### **CSG Test (Production)**

- Internal: Displacement fluid + 80% CSG Burst rating
- External: Pore Pressure from the well TD the Surface CSG shoe and MW of the drilling mud that was in the hole when the CSG was run to surface

#### **Gas Kick (Surface)**

- Internal: Gas Kick based on Pore Pressure or Fracture Gradient @ CSG shoe with a gas 0.115psi/ft Gas gradient to surface while drilling the next hole section
- External: Pore Pressure from section TD to previous CSG shoe and MW of the drilling mud that was in the hole when the CSG was run to surface

#### **Stimulation (Production)**

- Internal: Displacement fluid + Max Frac treating pressure (not to exceed 80% CSG Burst rating)
- External: Pore Pressure from the well TD to the surface CSG shoe and 8.5 ppg MWE to surface

### **Collapse Loads**

#### **Lost Circulation (Surface)**

- Internal: Losses experienced while drilling the next hole section (e.g. losses while drilling the production hole section are used as a collapse load to design the surface CSG). After losses there will be a column of mud inside the CSG with an equivalent weight to the Pore Pressure of the lost circulation zone
- External: MW of the drilling mud that was in the hole when the CSG was run

#### **Cementing (Surface/Production)**

- Internal: Displacement Fluid
- External: Cement Slurries to TOC, MW to surface

#### **Full Evacuation (Production)**

- Internal: Atmospheric Pressure
- External: MW of the drilling mud that was in the hole when the CSG was run

### **Tension Loads**

#### **Running CSG (Surface/Production)**

- Axial load of the buoyant weight of the string plus either 100 klb over-pull or string weight in air, whichever is less

#### **Green Cement (Surface/Production)**

- Axial load of the buoyant weight of the string plus the cement plug bump pressure (Final displacement pressure + 500 psi)

Burst, Collapse and Tensile SF are calculated using Landmark's Stress Check (Casing Design) software.

## **4. CEMENT PROGRAM:**

### **Surface Interval**

Interval	Amount sx	Ft of Fill	Type	Gal/Sk	PPG	Ft <sup>3</sup> /sk	24 Hr Comp
<b>Surface (TOC: 0' – 400')</b>							
<b>Lead:</b> 0' – 400' (125% Excess)	190	400	Premium Plus Cement: 1% Calcium Chloride – Flake	6.36	14.8	1.34	1608 psi

**Production Interval**

Interval	Amount sx	Ft of Fill	Type	Gal/Sk	PPG	Ft <sup>3</sup> /sk	24 Hr Comp
<b>Production (TOC: 0' – 5009')</b>							
<b>Lead:</b> 0' – 2900' (100 % Excess)	400	2900	Interfill C: 0.25 lbm/sk D-AIR 5000	13.88	11.9	2.43	281 psi
<b>Tail:</b> 2900' - 5009' (100 % Excess)	480	2100	Premium Plus Cement: 0.5% Halad ®-344, 0.2% WellLife 734, 5 lbm/sk Microbond, 0.3% Econolite, 0.3% CFR-3	7.72	14.2	1.55	1413 psi

**Description of Cement Additives:** Calcium Chloride – Flake (Accelerator), D-AIR 5000 (Defoamer), Halad ®-344 (Low Fluid Loss Control), WellLife 734 (Cement Enhancer), Microbond (Expander), Econolite (Light Weight Additive), CFR-3 (Dispersant)

The volumes indicated above may be revised depending on if a caliper measurement.

**5. DIRECTIONAL PLAN**

See directional plan attached.

**6. PRESSURE CONTROL EQUIPMENT**

**Surface: 0' – 400'** None.

**Production: 400' MD/TVD – 5009' MD/ 5000' TVD** The minimum working pressure of the blowout preventer (BOP) and related equipment (BOPE) required to drill below the surface casing shoe shall be 3000 (3M) psi. Operator will be using an 11" 3M two ram stack with 3M annular preventer, & 3M Choke Manifold.

- a. The 11" 3000 psi blowout prevention equipment will be installed and operational after setting the 8 5/8" surface casing and the 8 5/8" SOW x 11" 3K conventional wellhead; the rotating head body will be installed but the rubber will be installed when it becomes operationally necessary.
- b. The BOP and ancillary BOPE will be tested by a third party after setting surface casing. All equipment will be tested to 250/3000 psi for 10 minutes and charted, except the annular, which will be tested to 70% of working pressure.
- c. The BOPE test will be repeated within 21 days of the original test, on the first trip
- d. Other accessory BOP equipment will include a floor safety valve, choke lines, and choke manifold having a 3000 psi working pressure rating and tested to 3000 psi.
- e. The Operator also requests a variance to connect the BOP choke outlet to the choke manifold using a 3" co-flex hose with a working pressure of 3000 psi.
- f. BOP & Choke manifold diagrams attached.

*Self*  
*Ed*

## 7. MUD PROGRAM:

Depth	Mud Wt ppg	Vis Sec	Fluid Loss	Type System
0' – 400'	8.4 – 8.8	27 – 38	NC	Fresh Water / Spud Mud
400' – TD	9.6 – 10.0	28 – 40	NC	Brine Water / Salt Gel / Sweeps

**Remarks:** Pump high viscosity sweeps as needed for hole cleaning. The mud system will be monitored visually/manually as well as with an electronic PVT. The necessary mud products for additional weight and fluid loss control will be on location at all times. Appropriately weighted mud will be used to isolate potential gas, oil, and water zones until such time as casing can be cemented into place for zonal isolation.

## 8. AUXILIARY WELL CONTROL AND MONITORING EQUIPMENT

- A full opening drill pipe stabbing valve having the appropriate connections will be on the rig floor unobstructed and readily accessible at all times.
- Hydrogen Sulfide detection equipment will be in operation after drilling out the surface casing shoe until the production casing is cemented. Breathing equipment will be on location upon drilling the surface casing shoe until total depth is reached. **If Hydrogen Sulfide is encountered, measured amounts and formations will be reported to the BLM.**

See COA

## 9. POTENTIAL HAZARDS:

- H<sub>2</sub>S detection equipment will be in operation after drilling out the surface casing shoe until the production casing has been cemented. Breathing equipment will be on location from drilling out the surface shoe until production casing is cemented. If H<sub>2</sub>S is encountered the operator will comply with Onshore Order #6.
- No abnormal temperatures or pressures are anticipated. The highest anticipated pressure gradient is **0.5 psi/ft**. Maximum anticipated bottom hole pressure is **2500 psi**.
- All personnel will be familiar with all aspects of safe operation of equipment being used to drill this well. Adequate flare lines will be installed off the mud/gas separator where gas may be flared safely.

## 10. ANTICIPATED STARTING DATE AND DURATION OF OPERATIONS

Road and location construction will begin after the BLM has approved the APD. Anticipated spud date will be as soon as possible after BLM approval and as soon as a rig will be available. Move in operations and drilling is expected to take 15 days. If production casing is run, then an additional 30 days will be needed to complete the well and construct surface facilities and/or lay flow lines in order to place well on production.

## 11. WIRELINE LOGGING / MUD LOGGING / LWD

- NO open hole wireline logging
- Mud logging: 3,000' – TD

See COA

## COMPANY PERSONNEL:

<u>Name</u>	<u>Title</u>	<u>Office Phone</u>	<u>Mobile Phone</u>
Kacie Cruz	Drilling Engineer	(713)350-4889	(281) 433-6594
Sebastian Millan	Drilling Engineer Supervisor	(713)350-4950	(832) 528-3268
Roger Allen	Drilling Superintendent	(713)215-7617	(281) 682-3919
Oscar Quintero	Drilling Manager	(713)985-6343	(713) 689-4946



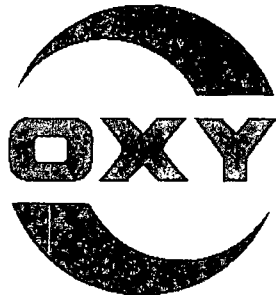
**Weatherford<sup>®</sup>**

## **Drilling Services**

---

## **Proposal**

---



**OCCIDENTAL PERMIAN LTD.**

YESO VIKING FED #13

EDDY CO., NEW MEXICO

WELL FILE: **PLAN 1**

AUGUST 23, 2013

---

**Weatherford International, Ltd.**

P.O. Box 61028

Midland, TX 79711 USA

+1.432.561.8892 Main

+1.432.561.8895 Fax

[www.weatherford.com](http://www.weatherford.com)





# Yeso Viking Fed #13 Eddy Co., New Mexico

KB ELEV: 3545.0  
GL ELEV: 3531.0

## SECTION DETAILS

Sec	MD	Inc	Azi	TVD	+N/-S	+E/-W	DLeg	TFace	VSec	Target
1	0.00	0.00	176.23	0.00	0.00	0.00	0.00	0.00	0.00	
2	1350.00	0.00	176.23	1350.00	0.00	0.00	0.00	0.00	0.00	
3	1620.64	4.06	176.23	1620.41	-9.56	0.63	1.50	176.23	9.17	
4	5008.73	4.06	176.23	5000.00	-248.90	16.40	0.00	0.00	238.70	PBHL

## WELL DETAILS

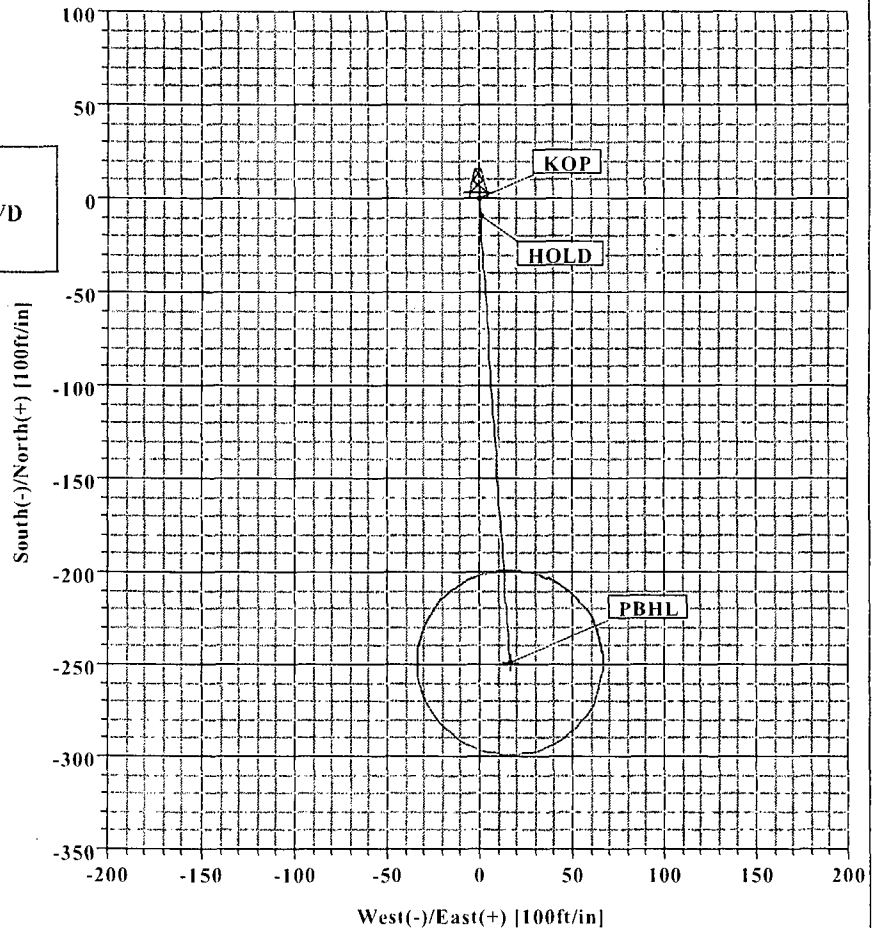
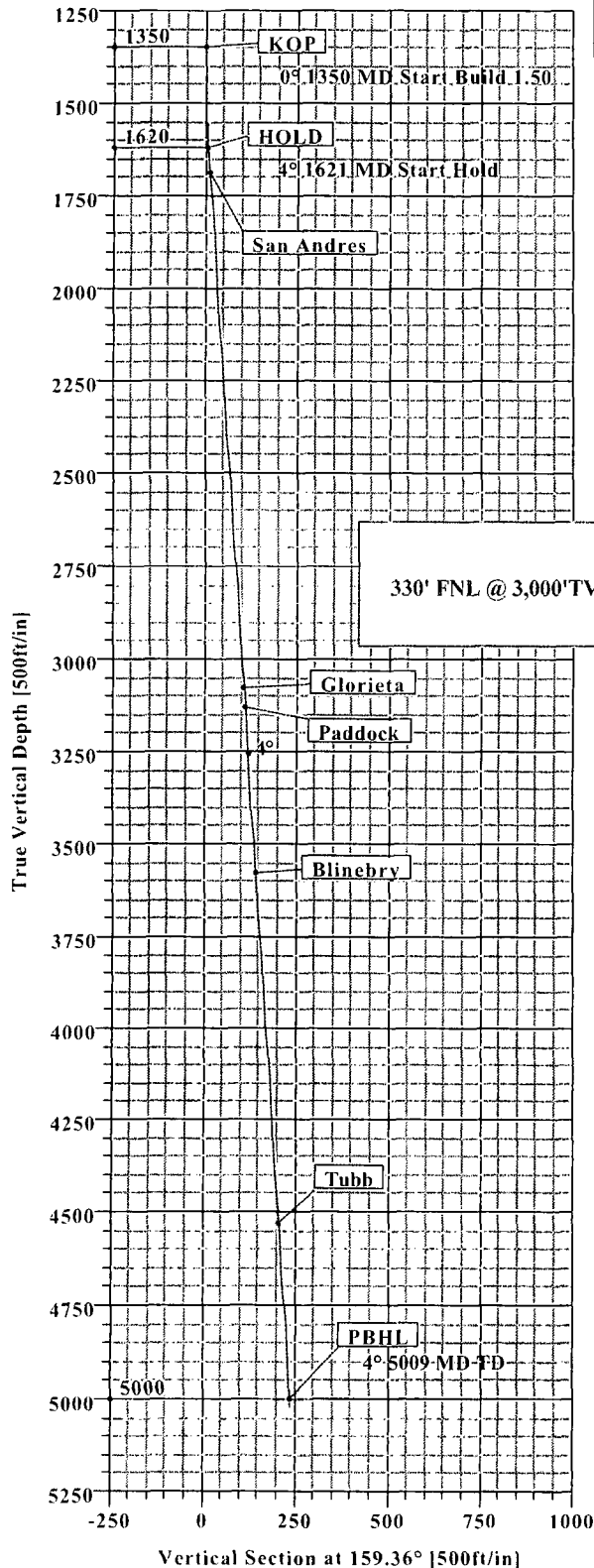
Name	+N/-S	+E/-W	Northing	Easting	Latitude	Longitude	Slot
#13	0.00	0.00	661644.00	527701.60	32°49'08.092N	104°14'35.380W	N/A

## TARGET DETAILS

Name	TVD	+N/-S	+E/-W	Northing	Easting	Shape
PBHL	5000.00	-248.90	16.40	661395.10	527718.00	Circle (Radius: 50)

## SITE DETAILS

Yeso Viking Fed #13  
Site Centre Northing: 661644.00  
Easting: 527701.60  
Ground Level: 3525.00  
Positional Uncertainty: 0.00  
Convergence: 0.05



Weatherford

Plan: Plan #1 (#13/1)

Created By: Patrick Rudolph

Date: 8/23/2013



# Weatherford International Ltd.

## WFT Plan Report - X & Y's



Weatherford

Company: Occidental Permian Ltd. Date: 8/23/2013 Time: 08:51:58 Page: 1  
 Field: Eddy Co, NM (Nad 27) Co-ordinate(NE) Reference: Well: #13, Grid North  
 Site: Yeso Viking Fed #13 Vertical (TVD) Reference: SITE 3539.0  
 Well: #13 Section (VS) Reference: Well (0.00N,0.00E,159.36Azi)  
 Wellpath: 1 Survey Calculation Method: Minimum Curvature Db: Sybase

Plan: Plan #1 Date Composed: 8/23/2013  
 Principal: Yes Version: 1  
 Tied-to: From Surface

Site: Yeso Viking Fed #13

Site Position: Northing: 661644.00 ft Latitude: 32 49 8.092 N  
 From: Map Easting: 527701.60 ft Longitude: 104 14 35.380 W  
 Position Uncertainty: 0.00 ft North Reference: Grid  
 Ground Level: 3525.00 ft Grid Convergence: 0.05 deg

Well: #13 Slot Name:  
 Well Position: +N/-S 0.00 ft Northing: 661644.00 ft Latitude: 32 49 8.092 N  
 +E/-W 0.00 ft Easting: 527701.60 ft Longitude: 104 14 35.380 W  
 Position Uncertainty: 0.00 ft

Wellpath: 1 Drilled From: Surface  
 Current Datum: SITE Height 3539.00 ft Tie-on Depth: 0.00 ft  
 Magnetic Data: 5/28/2014 Above System Datum: Mean Sea Level  
 Field Strength: 51387 nT Declination: 5.63 deg  
 Vertical Section: Depth From (TVD) +N/-S Mag Dip Angle: 64.74 deg  
 ft ft ft Direction deg  
 0.00 0.00 0.00 159.36

### Plan Section Information

MD ft	Incl deg	Azim deg	TVD ft	+N/-S ft	+E/-W ft	DLS deg/100ft	Build deg/100ft	Turn deg/100ft	TFO deg	Target
0.00	0.00	176.23	0.00	0.00	0.00	0.00	0.00	0.00	0.00	
1350.00	0.00	176.23	1350.00	0.00	0.00	0.00	0.00	0.00	0.00	
1620.64	4.06	176.23	1620.41	-9.56	0.63	1.50	1.50	0.00	176.23	
5008.73	4.06	176.23	5000.00	-248.90	16.40	0.00	0.00	0.00	0.00	PBHL

### Survey

MD ft	Incl deg	Azim deg	TVD ft	N/S ft	E/W ft	VS ft	DLS deg/100ft	MapN ft	MapE ft	Comment
1300.00	0.00	176.23	1300.00	0.00	0.00	0.00	0.00	661644.00	527701.60	
1350.00	0.00	176.23	1350.00	0.00	0.00	0.00	0.00	661644.00	527701.60	KOP
1400.00	0.75	176.23	1400.00	-0.33	0.02	0.31	1.50	661643.67	527701.62	
1500.00	2.25	176.23	1499.96	-2.94	0.19	2.82	1.50	661641.06	527701.79	
1600.00	3.75	176.23	1599.82	-8.16	0.54	7.83	1.50	661635.84	527702.14	
1620.64	4.06	176.23	1620.41	-9.56	0.63	9.17	1.50	661634.44	527702.23	HOLD
1690.40	4.06	176.23	1690.00	-14.49	0.95	13.90	0.00	661629.51	527702.55	San Andres
1700.00	4.06	176.23	1699.57	-15.17	1.00	14.55	0.00	661628.83	527702.60	
1800.00	4.06	176.23	1799.32	-22.23	1.46	21.32	0.00	661621.77	527703.06	
1900.00	4.06	176.23	1899.07	-29.30	1.93	28.10	0.00	661614.70	527703.53	
2000.00	4.06	176.23	1998.82	-36.36	2.40	34.87	0.00	661607.64	527704.00	
2100.00	4.06	176.23	2098.57	-43.43	2.86	41.65	0.00	661600.57	527704.46	
2200.00	4.06	176.23	2198.32	-50.49	3.33	48.42	0.00	661593.51	527704.93	
2300.00	4.06	176.23	2298.07	-57.55	3.79	55.20	0.00	661586.45	527705.39	
2400.00	4.06	176.23	2397.82	-64.62	4.26	61.97	0.00	661579.38	527705.86	
2500.00	4.06	176.23	2497.57	-71.68	4.72	68.75	0.00	661572.32	527706.32	
2600.00	4.06	176.23	2597.32	-78.75	5.19	75.52	0.00	661565.25	527706.79	
2700.00	4.06	176.23	2697.07	-85.81	5.65	82.30	0.00	661558.19	527707.25	
2800.00	4.06	176.23	2796.81	-92.87	6.12	89.07	0.00	661551.13	527707.72	
2900.00	4.06	176.23	2896.56	-99.94	6.58	95.84	0.00	661544.06	527708.18	
3000.00	4.06	176.23	2996.31	-107.00	7.05	102.62	0.00	661537.00	527708.65	
3083.90	4.06	176.23	3080.00	-112.93	7.44	108.30	0.00	661531.07	527709.04	Glorieta
3100.00	4.06	176.23	3096.06	-114.07	7.52	109.39	0.00	661529.93	527709.12	



# Weatherford International Ltd.

## WFT Plan Report - X & Y's



**Weatherford**

<b>Company:</b> Occidental Permian Ltd.	<b>Date:</b> 8/23/2013	<b>Time:</b> 08:51:58	<b>Page:</b> 2
<b>Field:</b> Eddy Co, NM (Nad 27)	<b>Co-ordinate(NE) Reference:</b> Well: #13, Grid North		
<b>Site:</b> Yeso Viking Fed #13	<b>Vertical (TVD) Reference:</b> SITE 3539.0		
<b>Well:</b> #13	<b>Section (VS) Reference:</b> Well (0.00N,0.00E,159.36Azi)		
<b>Wellpath:</b> 1	<b>Survey Calculation Method:</b> Minimum Curvature	<b>Db:</b> Sybase	

### Survey

MD ft	Incl deg	Azim deg	TVD ft	N/S ft	E/W ft	VS ft	DLS deg/100ft	MapN ft	MapE ft	Comment
3134.02	4.06	176.23	3130.00	-116.47	7.67	111.70	0.00	661527.53	527709.27	Paddock
3200.00	4.06	176.23	3195.81	-121.13	7.98	116.17	0.00	661522.87	527709.58	
3300.00	4.06	176.23	3295.56	-128.19	8.45	122.94	0.00	661515.81	527710.05	Blinebry
3400.00	4.06	176.23	3395.31	-135.26	8.91	129.72	0.00	661508.74	527710.51	
3500.00	4.06	176.23	3495.06	-142.32	9.38	136.49	0.00	661501.68	527710.98	
3585.16	4.06	176.23	3580.00	-148.34	9.77	142.26	0.00	661495.66	527711.37	
3600.00	4.06	176.23	3594.81	-149.39	9.84	143.27	0.00	661494.61	527711.44	
3700.00	4.06	176.23	3694.56	-156.45	10.31	150.04	0.00	661487.55	527711.91	
3800.00	4.06	176.23	3794.31	-163.51	10.77	156.82	0.00	661480.49	527712.37	
3900.00	4.06	176.23	3894.05	-170.58	11.24	163.59	0.00	661473.42	527712.84	Tubb
4000.00	4.06	176.23	3993.80	-177.64	11.70	170.37	0.00	661466.36	527713.30	
4100.00	4.06	176.23	4093.55	-184.71	12.17	177.14	0.00	661459.29	527713.77	
4200.00	4.06	176.23	4193.30	-191.77	12.64	183.92	0.00	661452.23	527714.24	
4300.00	4.06	176.23	4293.05	-198.84	13.10	190.69	0.00	661445.16	527714.70	
4400.00	4.06	176.23	4392.80	-205.90	13.57	197.47	0.00	661438.10	527715.17	
4500.00	4.06	176.23	4492.55	-212.96	14.03	204.24	0.00	661431.04	527715.63	
4540.55	4.06	176.23	4533.00	-215.83	14.22	206.99	0.00	661428.17	527715.82	
4600.00	4.06	176.23	4592.30	-220.03	14.50	211.01	0.00	661423.97	527716.10	PBHL
4700.00	4.06	176.23	4692.05	-227.09	14.96	217.79	0.00	661416.91	527716.56	
4800.00	4.06	176.23	4791.80	-234.16	15.43	224.56	0.00	661409.84	527717.03	
4900.00	4.06	176.23	4891.55	-241.22	15.89	231.34	0.00	661402.78	527717.49	
5008.73	4.06	176.23	5000.00	-248.90	16.40	238.70	0.00	661395.10	527718.00	

### Targets

Name	Description Dip.	Dir.	TVD ft	+N/-S ft	+E/-W ft	Map Northing ft	Map Easting ft	<--- Latitude ---> Deg Min Sec			<--- Longitude ---> Deg Min Sec		
PBHL			5000.00	-248.90	16.40	661395.10	527718.00	32	49	5.629 N	104	14	35.191 W
-Circle (Radius: 50)													
-Plan hit target													

### Casing Points

MD	TVD	Diameter	Hole Size	Name

### Annotation

MD ft	TVD ft	
1350.00	1350.00	KOP
1620.64	1620.41	HOLD
5008.72	4999.99	PBHL

### Formations

MD ft	TVD ft	Formations	Lithology	Dip Angle deg	Dip Direction deg
1690.40	1690.00	San Andres		0.00	0.00
3083.90	3080.00	Glorieta		0.00	0.00
3134.02	3130.00	Paddock		0.00	0.00
3585.16	3580.00	Blinebry		0.00	0.00
4540.55	4533.00	Tubb		0.00	0.00

**Weatherford****Weatherford Drilling Services**

GeoDec v5.03

---

Report Date: August 22, 2013  
Job Number: \_\_\_\_\_  
Customer: Occidental Permian Ltd.  
Well Name: Yeso Viking Fed #13  
API Number: \_\_\_\_\_  
Rig Name: \_\_\_\_\_  
Location: Eddy County, NM(Nad 27)  
Block: \_\_\_\_\_  
Engineer: Patrick Rudolph

---

US State Plane 1927	Geodetic Latitude / Longitude
System: New Mexico East 3001 (NON-EXACT)	System: Latitude / Longitude
Projection: SPC27 Transverse Mercator	Projection: Geodetic Latitude and Longitude
Datum: NAD 1927 (NADCON CONUS)	Datum: NAD 1927 (NADCON CONUS)
Ellipsoid: Clarke 1866	Ellipsoid: Clarke 1866
North/South 661644.000 USFT	Latitude 32.8189145 DEG
East/West 527701.600 USFT	Longitude -104.2431612 DEG
Grid Convergence: .05°	
Total Correction: +7.66°	

---

Geodetic Location WGS84	Elevation =	0.0 Meters
Latitude =	32.81891° N	32° 49 min 8.092 sec
Longitude =	104.24316° W	104° 14 min 35.380 sec

---

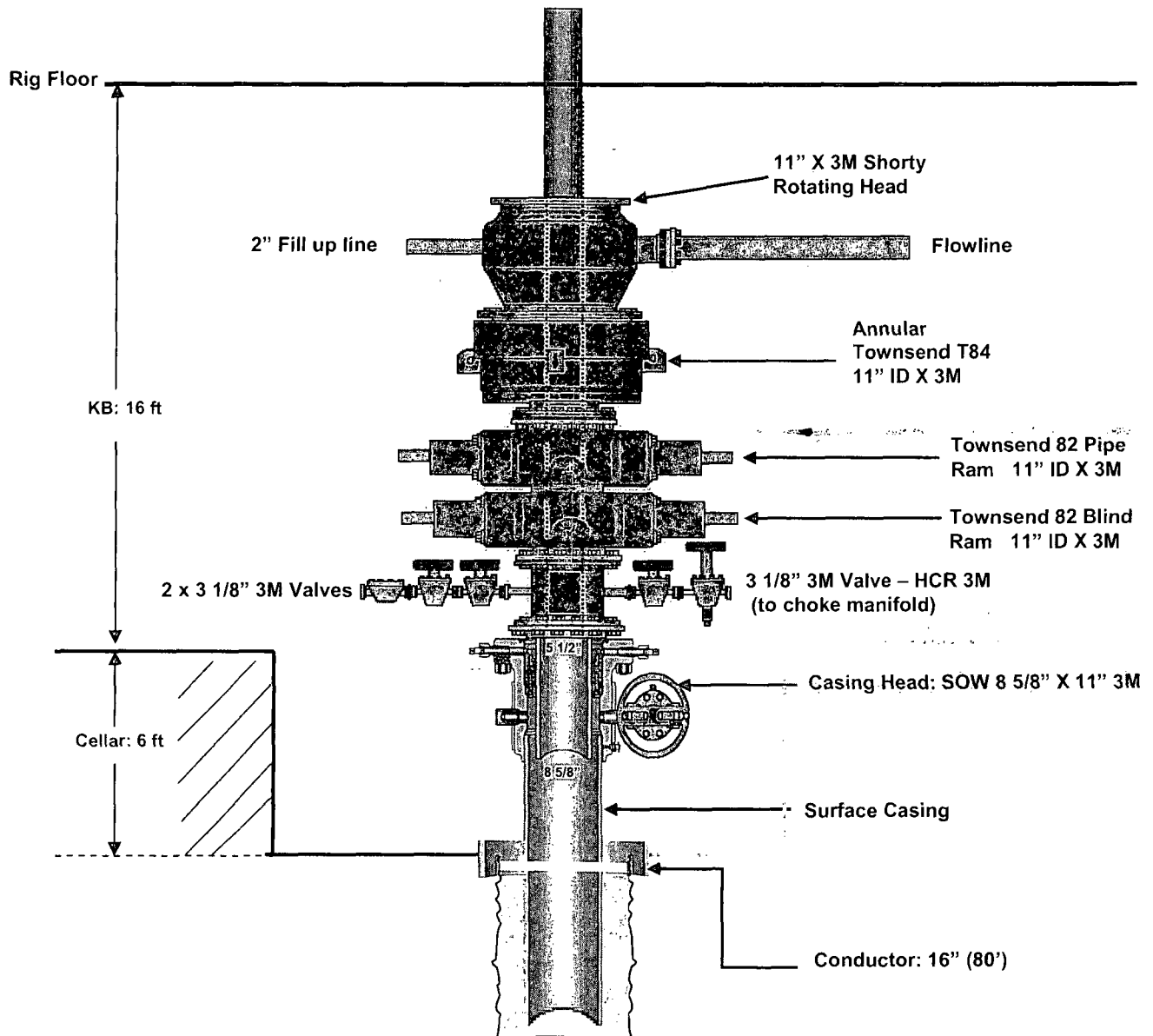
Magnetic Declination =	7.71°	[True North Offset]	
Local Gravity =	.9989 g	Checksum =	6686
Local Field Strength =	48599 nT	Magnetic Vector X =	23691 nT
Magnetic Dip =	60.53°	Magnetic Vector Y =	3206 nT
Magnetic Model =	bggm2013	Magnetic Vector Z =	42312 nT
Spud Date =	May 28, 2014	Magnetic Vector H =	23907 nT

---

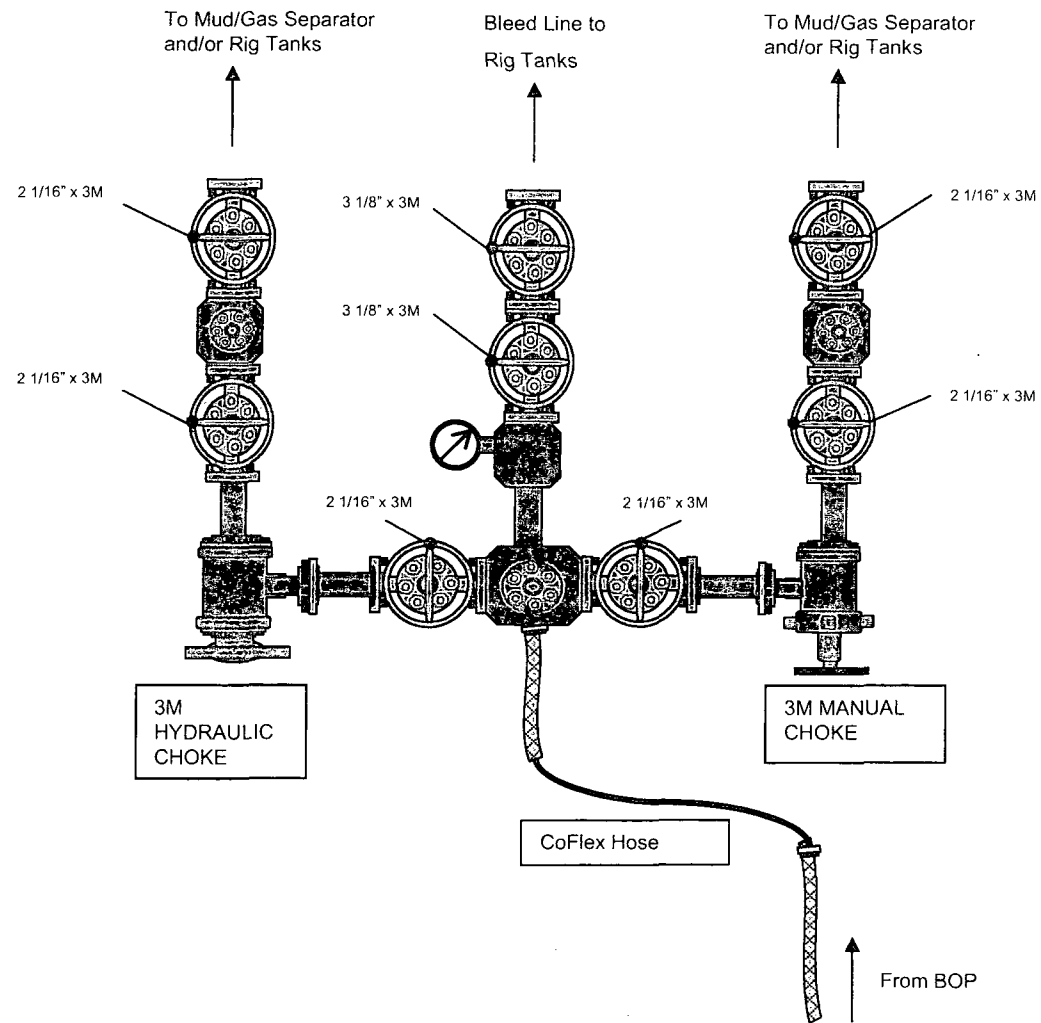
Signed: \_\_\_\_\_

Date: \_\_\_\_\_

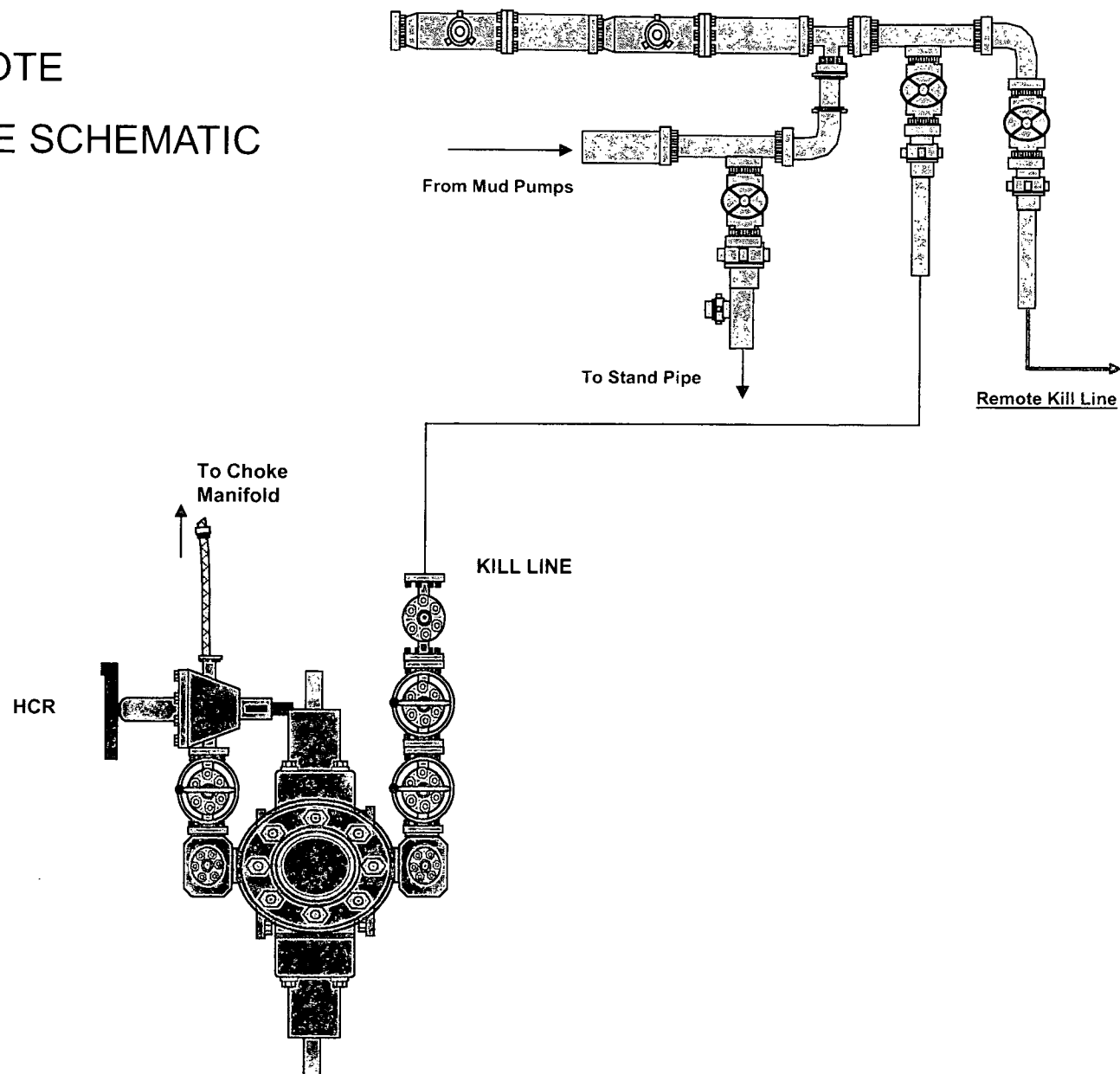
# BOP Diagram



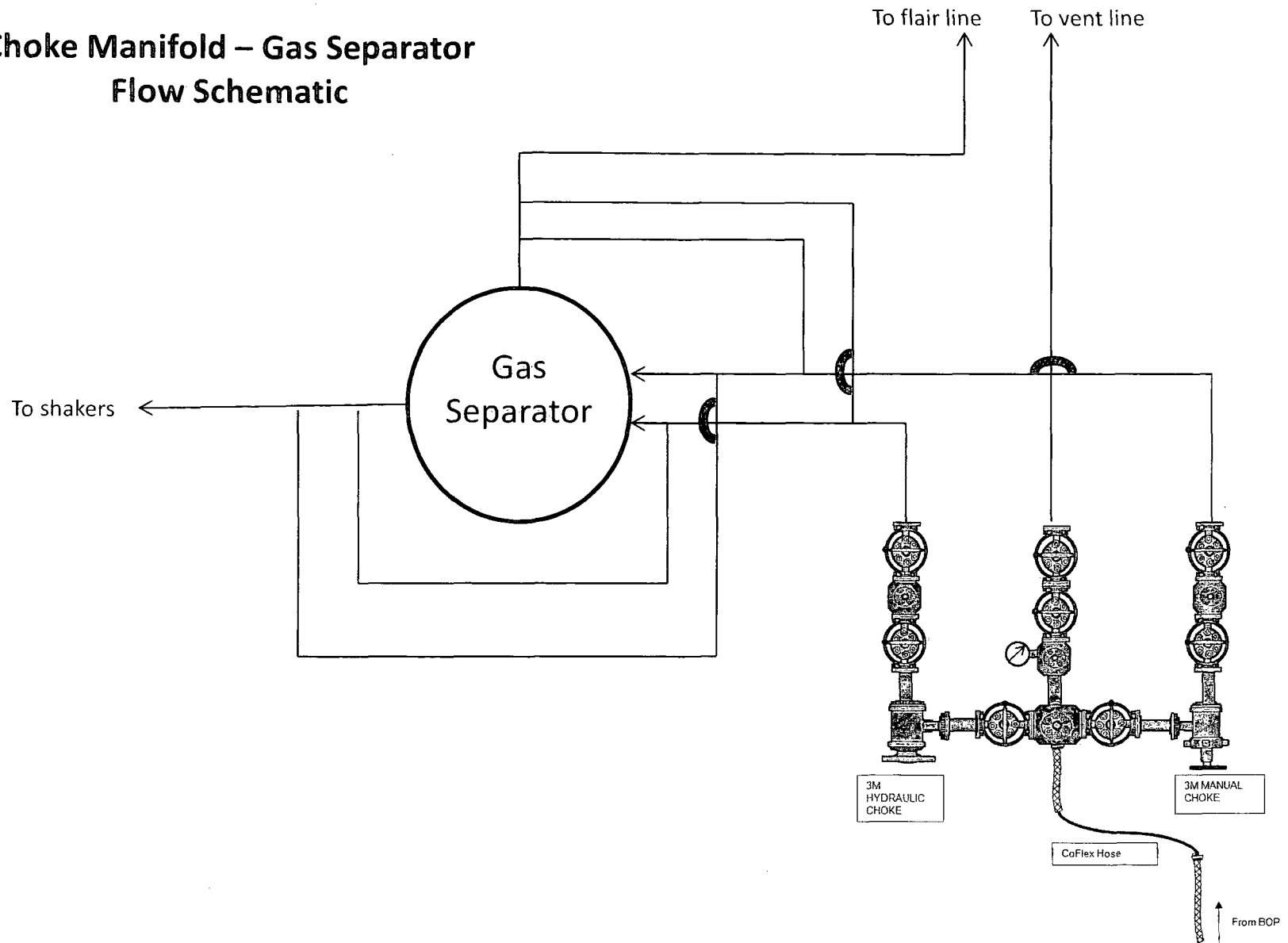
## 3M CHOKE MANIFOLD CONFIGURATION



# 3M REMOTE KILL LINE SCHEMATIC

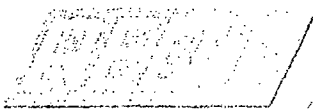


# Choke Manifold – Gas Separator Flow Schematic





MANIFOLD



HEBEI OUYA LTD. THE HOSE PEOPLE PLUS

9727 47th Ave  
Edmonton, AB T6E 5M7  
780-437-2630

## Certificate of Compliance

Date: 2011-12-01  
Item Desc: REDL-SLIM-48x39IN-FIG1502  
Asset #: 1642343-04  
Chip ID: NOCHIPID  
Owner: Commercial Solutions INC (103867)

Test#:   
Initial Location:   
Site: 2714 5 ST

Tested by: Dave Penner

Witnessed by: Ben Ahlskog

### Item Attributes:

Serial Number	1642343-04
Manufacturer	HEBEI OUYA LTD.
Application Group	SLIMHOLE
Model	REDL-SLIMHOLE-3000-48
Date of Mfr	
Date Installed	2011-12-01
Locn Desc	
Inside Dia.	3 IN
Length	39 IN
Working Pressure	3000 PSI
Test Pressure	4500 PSI
Coupling A	948HX+48B/FIG1502-HU-48
Attach Method A	Swaged
Coupling A Model	GEORGE MYER/KEMPER REBUILT
Coupling B	948HX+48B/FIG1502-HU-48
Attach Method B	Swaged
Coupling B Model	GEORGE MYER/KEMPER REBUILT
Distributor Ref #	1642343-04
Factory Ref #	
EndUser Ref #	
Notes	BUILT ON PO: JON

### Default Hose Certification

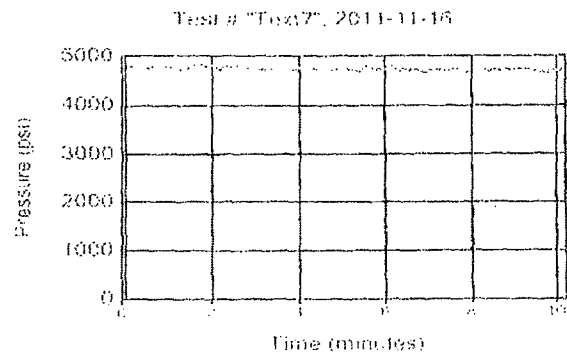
#### Test Notes

Hose passed all visual and physical inspections.

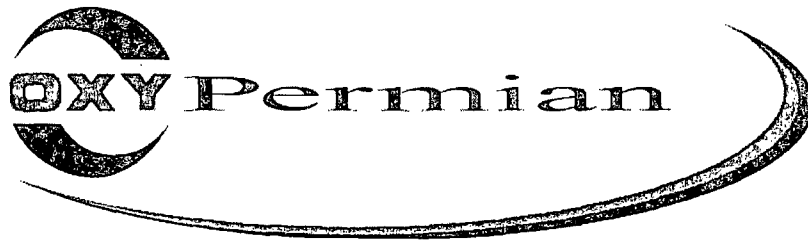
Continuity Test Results  
Continuity Ohm Reading  
Certification Result  
Generate Alert?  
Comments  
TimeStamp

N/A  
PASS

2011-12-01 12:54:14 -07:00







## **Permian Drilling Hydrogen Sulfide Drilling Operations Plan New Mexico**

### **Scope**

This contingency plan establishes guidelines for the public, all company employees, and contract employees who's work activities may involve exposure to hydrogen sulfide (H<sub>2</sub>S) gas.

While drilling this well, it is possible to encounter H<sub>2</sub>S bearing formations. At all times, the first barrier to control H<sub>2</sub>S emissions will be the drilling fluid, which will have a density high enough to control influx.

### **Objective**

1. Provide an immediate and predetermined response plan to any condition when H<sub>2</sub>S is detected. All H<sub>2</sub>S detections in excess of 10 parts per million (ppm) concentration are considered an Emergency.
2. Prevent any and all accidents, and prevent the uncontrolled release of hydrogen sulfide into the atmosphere.
3. Provide proper evacuation procedures to cope with emergencies.
4. Provide immediate and adequate medical attention should an injury occur.

## **Discussion**

Implementation:	This plan with all details is to be fully implemented before drilling to <u>commence</u> .
Emergency response Procedure:	This section outlines the conditions and denotes steps to be taken in the event of an emergency.
Emergency equipment Procedure:	This section outlines the safety and emergency equipment that will be required for the drilling of this well.
Training provisions:	This section outlines the training provisions that must be adhered to prior to drilling.
Drilling emergency call lists:	Included are the telephone numbers of all persons to be contacted should an emergency exist.
Briefing:	This section deals with the briefing of all people involved in the drilling operation.
Public safety:	Public safety personnel will be made aware of any potential evacuation and any additional support needed.
Check lists:	Status check lists and procedural check lists have been included to insure adherence to the plan.
General information:	A general information section has been included to supply support information.

## **Hydrogen Sulfide Training**

All personnel, whether regularly assigned, contracted, or employed on an unscheduled basis, will receive training from a qualified instructor in the following areas prior to commencing drilling operations on the well:

1. The hazards and characteristics of H<sub>2</sub>S.
2. Proper use and maintenance of personal protective equipment and life support systems.
3. H<sub>2</sub>S detection.
4. Proper use of H<sub>2</sub>S detectors, alarms, warning systems, briefing areas, evacuation procedures and prevailing winds.
5. Proper techniques for first aid and rescue procedures.
6. Physical effects of hydrogen sulfide on the human body.
7. Toxicity of hydrogen sulfide and sulfur dioxide.
8. Use of SCBA and supplied air equipment.
9. First aid and artificial respiration.
10. Emergency rescue.

In addition, supervisory personnel will be trained in the following areas:

1. The effects of H<sub>2</sub>S on metal components. If high tensile strength tubular is to be used, personnel will be trained in their special maintenance requirements.
2. Corrective action and shut-in procedures when drilling a well, blowout prevention and well control procedures.
3. The contents and requirements of the H<sub>2</sub>S Drilling Operations Plan.

H<sub>2</sub>S training refresher must have been taken within one year prior to drilling the well. Specifics on the well to be drilled will be discussed during the pre-spud meeting. H<sub>2</sub>S and well control (choke) drills will be performed while drilling the well, at least on a weekly basis. This plan shall be available in the well site. All personnel will be required to carry the documentation proving that the H<sub>2</sub>S training has been taken.

### **Service company and visiting personnel**

- A. Each service company that will be on this well will be notified if the zone contains H<sub>2</sub>S.
- B. Each service company must provide for the training and equipment of their employees before they arrive at the well site.
- C. Each service company will be expected to attend a well site briefing

## **Emergency Equipment Requirements**

### 1. Well control equipment

The well shall have hydraulic BOP equipment for the anticipated pressures. Equipment is to be tested on installation and follow Oxy Well Control standard, as well as BLM Onshore Order #2.

*Special control equipment:*

- A. Hydraulic BOP equipment with remote control on ground. Remotely operated choke.
- B. Rotating head
- C. Gas buster equipment shall be installed before drilling out of surface pipe.

### 2. Protective equipment for personnel

- A. Four (4) 30-minute positive pressure air packs (2 at each briefing area) on location.
- B. Adequate fire extinguishers shall be located at strategic locations.
- C. Radio / cell telephone communication will be available at the rig.
  - Rig floor and trailers.
  - Vehicle.

### 3. Hydrogen sulfide sensors and alarms

- A. H<sub>2</sub>S sensor with alarms will be located on the rig floor, at the bell nipple, and at the flow line. These monitors will be set to alarm at 10 ppm with strobe light, and audible alarm.
- B. Hand operated detectors with tubes.
- C. H<sub>2</sub>S monitor tester (to be provided by contract Safety Company.)
- D. There shall be one combustible gas detector on location at all times.

### 4. Visual Warning Systems

- A. One sign located at each location entrance with the following language:

**Caution – potential poison gas  
Hydrogen sulfide  
No admittance without authorization**

*Wind sock – wind streamers:*

- A. One 36" (in length) wind sock located at protection center, at height visible from rig floor.
- B. One 36" (in length) wind sock located at height visible from pit areas.

*Condition flags*

- A. One each condition flag to be displayed to denote conditions.

**green – normal conditions**

**yellow – potential danger**

**red – danger, H2S present**

- B. Condition flag shall be posted at each location sign entrance.

5. Mud Program

The mud program is designed to minimize the risk of having H2S and other formation fluids at surface. Proper mud weight and safe drilling practices will be applied. H2S scavengers will be used to minimize the hazards while drilling. Below is a summary of the drilling program.

*Mud inspection devices:*

Garrett gas train or hatch tester for inspection of sulfide concentration in mud system.

6. Metallurgy

- A. Drill string, casing, tubing, wellhead, blowout preventers, drilling spools or adapters, kill lines, choke manifold, lines and valves shall be suitable for the H2S service.
- B. All the elastomers, packing, seals and ring gaskets shall be suitable for H2S service.

7. Well Testing

No drill stem test will be performed on this well.

8. Evacuation plan

Evacuation routes should be established prior to well spud for each well and discussed with all rig personnel.

9. Designated area

- A. Parking and visitor area: all vehicles are to be parked at a predetermined safe distance from the wellhead.
- B. There will be a designated smoking area.
- C. Two briefing areas on either side of the location at the maximum allowable distance from the well bore so they offset prevailing winds perpendicularly, or at a 45-degree angle if wind direction tends to shift in the area.

**Emergency procedures**

- A. In the event of any evidence of H<sub>2</sub>S level above 10 ppm, take the following steps:
  - 1. The Driller will pick up off bottom, shut down the pumps, slow down the pipe rotation.
  - 2. Secure and don escape breathing equipment, report to the upwind designated safe briefing / muster area.
  - 3. All personnel on location will be accounted for and emergency search should begin for any missing, the Buddy System will be implemented.
  - 4. Order non-essential personnel to leave the well site, order all essential personnel out of the danger zone and upwind to the nearest designated safe briefing / muster area.
  - 5. Entrance to the location will be secured to a higher level than our usual "Meet and Greet" requirement, and the proper condition flag will be displayed at the entrance to the location.
  - 6. Take steps to determine if the H<sub>2</sub>S level can be corrected or suppressed and, if so, proceed as required.
- B. If uncontrollable conditions occur:
  - 1. Take steps to protect and/or remove any public in the down-wind area from the rig – partial evacuation and isolation. Notify necessary public safety personnel and appropriate regulatory entities (i.e. BLM) of the situation.



2. Remove all personnel to the nearest upwind designated safe briefing / muster area or off location.
3. Notify public safety personnel of safe briefing / muster area.
4. An assigned crew member will blockade the entrance to the location. No unauthorized personnel will be allowed entry to the location.
5. Proceed with best plan (at the time) to regain control of the well. Maintain tight security and safety procedures.

C. Responsibility:

1. Designated personnel.

- a. Shall be responsible for the total implementation of this plan.
- b. Shall be in complete command during any emergency.
- c. Shall designate a back-up.

All personnel:

1. On alarm, don escape unit and report to the nearest upwind designated safe briefing / muster area upw
2. Check status of personnel (buddy system).
3. Secure breathing equipment.
4. Await orders from supervisor.

Drill site manager:

1. Don escape unit if necessary and report to nearest upwind designated safe briefing / muster area.
2. Coordinate preparations of individuals to return to point of release with tool pusher and driller (using the buddy system).
3. Determine H2S concentrations.
4. Assess situation and take control measures.

Tool pusher:

1. Don escape unit Report to up nearest upwind designated safe briefing / muster area.
2. Coordinate preparation of individuals to return to point of release with tool pusher drill site manager (using the buddy system).
3. Determine H2S concentration.
4. Assess situation and take control measures.

Driller:

1. Don escape unit, shut down pumps, continue

- |   |   |
|---|---|
|   | rotating DP.  |
|   | 2. Check monitor for point of release.  |
|   | 3. Report to nearest upwind designated safe briefing / muster area.   |
|   | 4. Check status of personnel (in an attempt to rescue, use the buddy system).   |
|   | 5. Assigns least essential person to notify Drill Site Manager and tool pusher by quickest means in case of their absence.                              |
|   | 6. Assumes the responsibilities of the Drill Site Manager and tool pusher until they arrive should they be absent.                                      |
| Derrick man<br>Floor man #1<br>Floor man #2 | 1. Will remain in briefing / muster area until instructed by supervisor.  |
| Mud engineer:                               | 1. Report to nearest upwind designated safe briefing / muster area.<br>2. When instructed, begin check of mud for ph and H2S level. (Garett gas train.) |
| Safety personnel:                           | 1. Mask up and check status of all personnel and secure operations as instructed by drill site manager.   |

### **Taking a kick**

When taking a kick during an H2S emergency, all personnel will follow standard Well control procedures after reporting to briefing area and masking up.

### **Open-hole logging**

All unnecessary personnel off floor. Drill Site Manager and safety personnel should monitor condition, advise status and determine need for use of air equipment.

### **Running casing or plugging**

Following the same “tripping” procedure as above. Drill Site Manager and safety personnel should determine if all personnel have access to protective equipment.

### **Ignition procedures**

The decision to ignite the well is the responsibility of the operator (Oxy Drilling Management). The decision should be made only as a last resort and in a situation where it is clear that:

1. Human life and property are endangered.
2. There is no hope controlling the blowout under the prevailing conditions at the well.

#### **Instructions for igniting the well**

1. Two people are required for the actual igniting operation. They must wear self-contained breathing units and have a safety rope attached. One man (tool pusher or safety engineer) will check the atmosphere for explosive gases with the gas monitor. The other man is responsible for igniting the well.
2. Primary method to ignite: 25 mm flare gun with range of approximately 500 feet.
3. Ignite upwind and do not approach any closer than is warranted.
4. Select the ignition site best for protection, and which offers an easy escape route.
5. Before firing, check for presence of combustible gas.
6. After lighting, continue emergency action and procedure as before.
7. All unassigned personnel will remain in briefing area until instructed by supervisor or directed by the Drill Site Manager.

**Remember:** After well is ignited, burning hydrogen sulfide will convert to sulfur dioxide, which is also highly toxic. **Do not assume the area is safe after the well is ignited.**

### **Status check list**

Note: All items on this list must be completed before drilling to production casing point.

1. H2S sign at location entrance.
2. Two (2) wind socks located as required.
3. Four (4) 30-minute positive pressure air packs (2 at each Briefing area) on location for all rig personnel and mud loggers.
4. Air packs inspected and ready for use.
5. Cascade system and hose line hook-up as needed.
6. Cascade system for refilling air bottles as needed.
7. Condition flag on location and ready for use.
8. H2S detection system hooked up and tested.
9. H2S alarm system hooked up and tested.
10. Hand operated H2S detector with tubes on location.
11. 1 – 100' length of nylon rope on location.
12. All rig crew and supervisors trained as required.
13. All outside service contractors advised of potential H2S hazard on well.
14. No smoking sign posted and a designated smoking area identified.
15. Calibration of all H2S equipment shall be noted on the IADC report.

Checked by: \_\_\_\_\_ Date: \_\_\_\_\_

### **Procedural check list during H2S events**

#### **Perform each tour:**

1. Check fire extinguishers to see that they have the proper charge.
2. Check breathing equipment to ensure that it is in proper working order.
3. Make sure all the H2S detection system is operative.

#### **Perform each week:**

1. Check each piece of breathing equipment to make sure that demand or forced air regulator is working. This requires that the bottle be opened and the mask assembly be put on tight enough so that when you inhale, you receive air or feel air flow.
2. BOP skills (well control drills).
3. Check supply pressure on BOP accumulator stand by source.
4. Check breathing equipment mask assembly to see that straps are loosened and turned back, ready to put on.
5. Check pressure on breathing equipment air bottles to make sure they are charged to full volume. ( Air quality checked for proper air grade "D" before bringing to location)
6. Confirm pressure on all supply air bottles.
7. Perform breathing equipment drills with on-site personnel.
8. Check the following supplies for availability.
  - A. Emergency telephone list.
  - B. Hand operated H2S detectors and tubes.

### **General evacuation plan**

1. When the company approved supervisor (Drill Site Manager, consultant, rig pusher, or driller) determines the H<sub>2</sub>S gas cannot be limited to the well location and the public will be involved, he will activate the evacuation plan.
2. Drill Site Manager or designee will notify local government agency that a hazardous condition exists and evacuation needs to be implemented.
3. Company or contractor safety personnel that have been trained in the use of H<sub>2</sub>S detection equipment and self-contained breathing equipment will monitor H<sub>2</sub>S concentrations, wind directions, and area of exposure. They will delineate the outer perimeter of the hazardous gas area. Extension to the evacuation area will be determined from information gathered.
4. Law enforcement personnel (state police, police dept., fire dept., and sheriff's dept.) Will be called to aid in setting up and maintaining road blocks. Also, they will aid in evacuation of the public if necessary.
5. After the discharge of gas has been controlled, company safety personnel will determine when the area is safe for re-entry.

**Important: Law enforcement personnel will not be asked to come into a contaminated area. Their assistance will be limited to uncontaminated areas. Constant radio contact will be maintained with them.**

### **Emergency actions**

#### **Well blowout – if emergency**

1. Evacuate all personnel to “Safe Briefing / Muster Areas” or off location if needed.
2. If sour gas – evacuate rig personnel.
3. If sour gas – evacuate public within 3000 ft radius of exposure.
4. Don SCBA and shut well in if possible using the buddy system.
5. Notify Drilling Superintendent and call 911 for emergency help (fire dept and ambulance) if needed.
6. Implement the Blowout Contingency Plan, and Drilling Emergency Action Plan.
6. Give first aid as needed.

#### **Person down location/facility**

1. If immediately possible, contact 911. Give location and wait for confirmation.
2. Don SCBA and perform rescue operation using buddy system.

### Toxic effects of hydrogen sulfide

Hydrogen sulfide is extremely toxic. The acceptable ceiling concentration for eight-hour exposure is 10 ppm, which is .001% by volume. Hydrogen sulfide is heavier than air (specific gravity – 1.192) and colorless. It forms an explosive mixture with air between 4.3 and 46.0 percent by volume. Hydrogen sulfide is almost as toxic as hydrogen cyanide and is between five and six times more toxic than carbon monoxide. Toxicity data for hydrogen sulfide and various other gases are compared in table i. Physical effects at various hydrogen sulfide exposure levels are shown in table ii.

Table i  
Toxicity of various gases

Common name	Chemical formula	Specific gravity (sc=1)	Threshold limit (1)	Hazardous limit (2)	Lethal concentration (3)
Hydrogen Cyanide	Hcn	0.94	10 ppm	150 ppm/hr	300 ppm
Hydrogen Sulfide	H2S	1.18	10 ppm	250 ppm/hr	600 ppm
Sulfur Dioxide	So2	2.21	5 ppm	-	1000 ppm
Chlorine	Cl2	2.45	1 ppm	4 ppm/hr	1000 ppm
Carbon Monoxide	Co	0.97	50 ppm	400 ppm/hr	1000 ppm
Carbon Dioxide	Co2	1.52	5000 ppm	5%	10%
Methane	Ch4	0.55	90,000 ppm	Combustible above 5% in air	

- 1) threshold limit – concentration at which it is believed that all workers may be repeatedly exposed day after day without adverse effects.
- 2) hazardous limit – concentration that will cause death with short-term exposure.
- 3) lethal concentration – concentration that will cause death with short-term exposure.

### Toxic effects of hydrogen sulfide

Table ii  
Physical effects of hydrogen sulfide

<u>Percent (%)</u>	<u>Ppm</u>	<u>Concentration</u> Grains 100 std. Ft3*	<u>Physical effects</u>
0.001	<10	00.65	Obvious and unpleasant odor.



0.002	10	01.30	Safe for 8 hours of exposure.
0.010	100	06.48	Kill smell in 3 – 15 minutes. May sting eyes and throat.
0.020	200	12.96	Kills smell shortly; stings eyes and throat.
0.050	500	32.96	Dizziness; breathing ceases in a few minutes; needs prompt artificial respiration.
0.070	700	45.36	Unconscious quickly; death will result if not rescued promptly.
0.100	1000	64.30	Unconscious at once; followed by death within minutes.

\*at 15.00 psia and 60'f.

### **Use of self-contained breathing equipment (SCBA)**

1. Written procedures shall be prepared covering safe use of SCBA's in dangerous atmosphere, which might be encountered in normal operations or in emergencies. Personnel shall be familiar with these procedures and the available SCBA.
2. SCBA's shall be inspected frequently at random to insure that they are properly used, cleaned, and maintained.
3. Anyone who may use the SCBA's shall be trained in how to insure proper face-piece to face seal. They shall wear SCBA's in normal air and then wear them in a test atmosphere. (note: such items as facial hair {beard or sideburns} and eyeglasses will not allow proper seal.) Anyone that may be reasonably expected to wear SCBA's should have these items removed before entering a toxic atmosphere. A special mask must be obtained for anyone who must wear eyeglasses or contact lenses.
4. Maintenance and care of SCBA's:
  - a. A program for maintenance and care of SCBA's shall include the following:
    1. Inspection for defects, including leak checks.
    2. Cleaning and disinfecting.
    3. Repair.
    4. Storage.
  - b. Inspection, self-contained breathing apparatus for emergency use shall be inspected monthly.
    1. Fully charged cylinders.
    2. Regulator and warning device operation.
    3. Condition of face piece and connections.
    4. Rubber parts shall be maintained to keep them pliable and prevent deterioration.
  - c. Routinely used SCBA's shall be collected, cleaned and disinfected as frequently as necessary to insure proper protection is provided.
5. Persons assigned tasks that requires use of self-contained breathing equipment shall be certified physically fit (medically cleared) for breathing equipment usage at least annually.
6. SCBA's should be worn when:
  - A. Any employee works near the top or on top of any tank unless test reveals less than 10 ppm of H<sub>2</sub>S.

- B. When breaking out any line where H<sub>2</sub>S can reasonably be expected.
- C. When sampling air in areas to determine if toxic concentrations of H<sub>2</sub>S exists.
- D. When working in areas where over 10 ppm H<sub>2</sub>S has been detected.
- E. At any time there is a doubt as to the H<sub>2</sub>S level in the area to be entered.

**Rescue**  
**First aid for H<sub>2</sub>S poisoning**

Do not panic!

Remain calm – think!

1. Don SCBA breathing equipment.
2. Remove victim(s) utilizing buddy system to fresh air as quickly as possible. (go up-wind from source or at right angle to the wind. Not down wind.)
3. Briefly apply chest pressure – arm lift method of artificial respiration to clean the victim's lungs and to avoid inhaling any toxic gas directly from the victim's lungs.
4. Provide for prompt transportation to the hospital, and continue giving artificial respiration if needed.
5. Hospital(s) or medical facilities need to be informed, before-hand, of the possibility of H<sub>2</sub>S gas poisoning – no matter how remote the possibility is.
6. Notify emergency room personnel that the victim(s) has been exposed to H<sub>2</sub>S gas.

Besides basic first aid, everyone on location should have a good working knowledge of artificial respiration.

Revised CM 6/27/2012



## **Permian Drilling Hydrogen Sulfide Drilling Operations Plan Yeso Viking Federal 24**

Open drill site. No homes or buildings are near the proposed location.

### **1. Escape**

Personnel shall escape upwind of wellbore in the event of an emergency gas release. Escape can take place through the lease road on the Northwest side of the location. Personnel need to move to a safe distance and block the entrance to location. If the primary route is not an option due to the wind direction, then a secondary egress route should be taken.

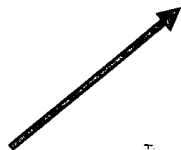
▲ H<sub>2</sub>S Detectors. At least three detectors will be installed: bell nipple, rig floor and Shakers.

Briefing Areas. At least two briefing areas will be placed, 90 deg off.

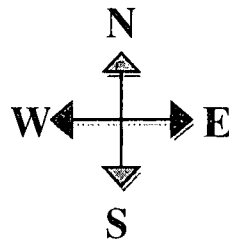
■ Wind direction indicators. Visible from rig floor and from the mud pits area.

A gas buster is connected to both the choke manifold and flowing outlets.

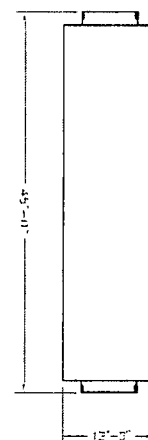
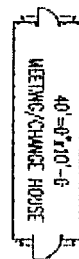
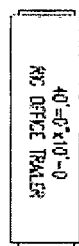
**WIND:** Prevailing winds are from the Southwest



## Primary Briefing Area



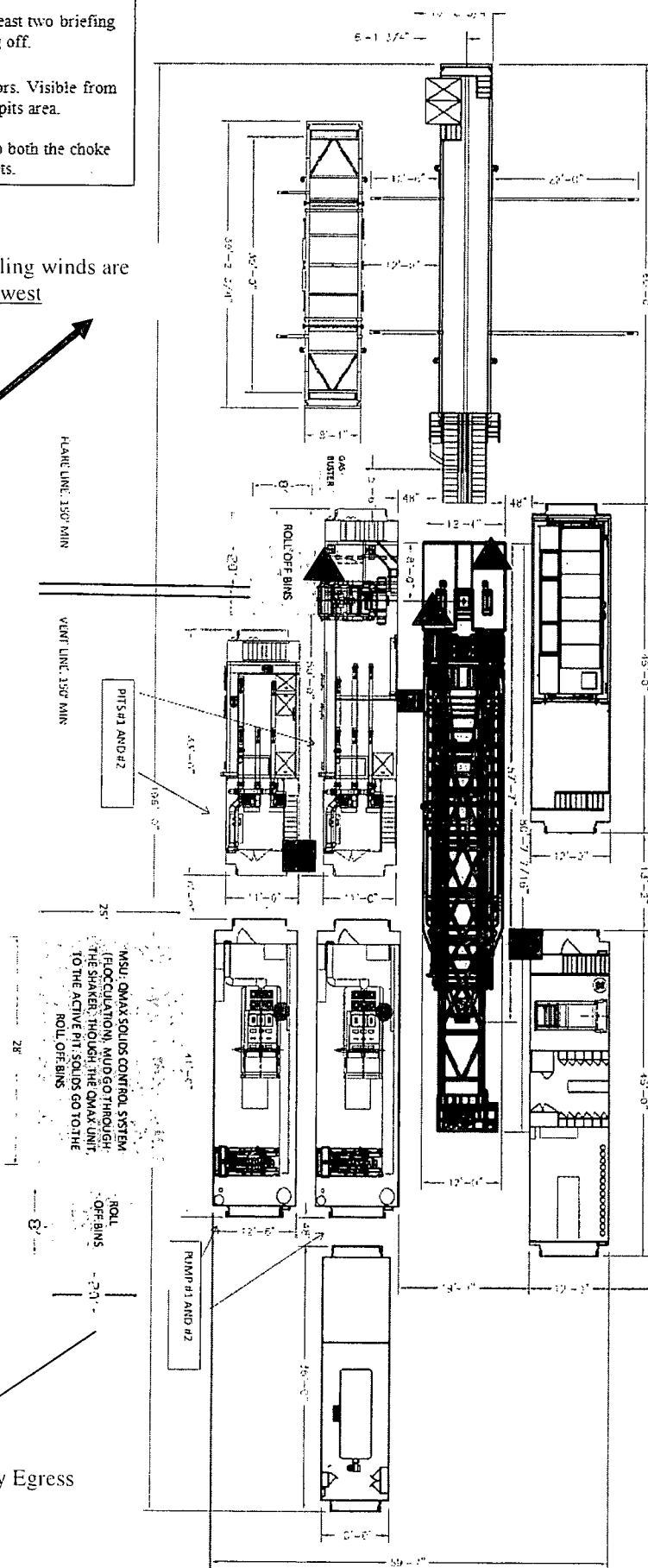
## Secondary Briefing Area

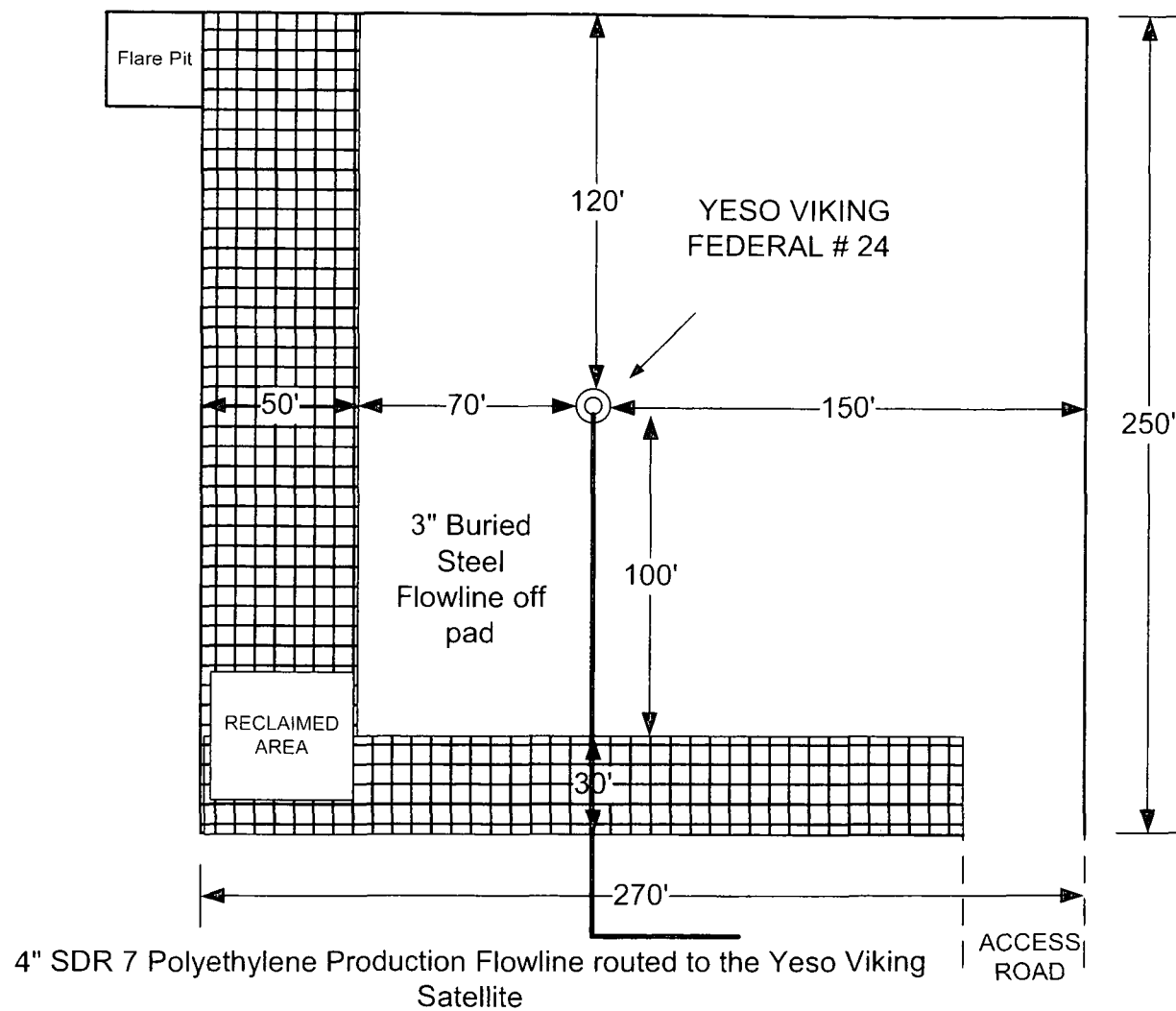


Exit to road. Caution sign placed here.



Secondary Egress





6' Diameter x 6' Deep Tinhorn  
Cellar

REVISION BLOCK						ENGINEERING RECORD	
NO.	DATE	DESCRIPTION	BY	CHK	APP	BY	DATE

SAVANNA 415 RIG DIAGRAM  
YESO VIKING FEDERAL # 24

EDDY COUNTY, NEW MEXICO

# Surface Use Plan of Operations

## Introduction

The following surface use plan of operations will be followed and carried out once the APD is approved. No other disturbance will be created other than what was submitted in this surface use plan. If any other surface disturbance is needed after the APD is approved, a BLM approved sundry notice or right of way application will be acquired prior to any new surface disturbance.

Before any surface disturbance is created, stakes or flagging will be installed to mark boundaries of permitted areas of disturbance, including soils storage areas. As necessary, slope, grade, and other construction control stakes will be placed to ensure construction in accordance with the surface use plan. All boundary markers will be maintained in place until final construction cleanup is completed. If disturbance boundary markers are disturbed or knocked down, they will be replaced before construction proceeds.

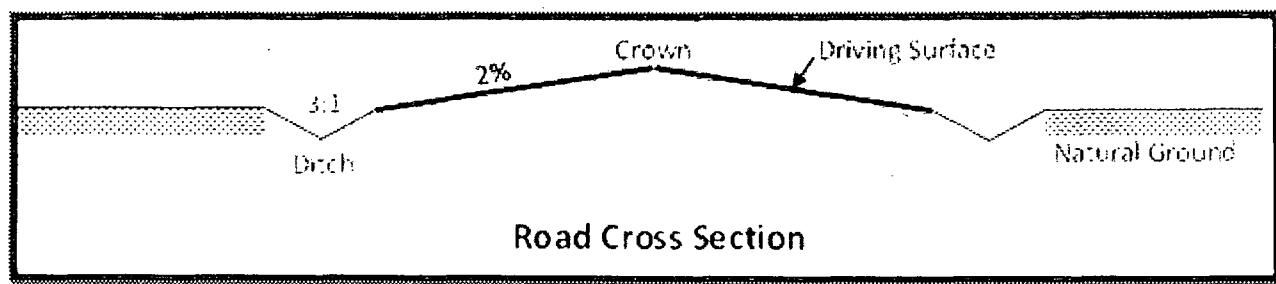
If terms and conditions are attached to the approved APD and amend any of the proposed actions in this surface use plan, we will adhere to the terms and conditions.

## 1. Existing Roads

- a. The existing access road route to the proposed project is depicted on LOCATION VERIFICATION MAP. Improvements to the driving surface will be done where necessary. No new surface disturbance will be done, unless otherwise noted in the New or Reconstructed Access Roads section of this surface use plan..
- b. The existing access road route to the proposed project does cross lease boundaries and a BLM road right-of-way will be acquired from the BLM prior to construction activities.
- c. The operator will improve or maintain existing roads in a condition the same as or better than before operations begin. The operator will repair pot holes, clear ditches, repair the crown, etc. All existing structures on the entire access route such as cattleguards, other range improvement projects, culverts, etc. will be properly repaired or replaced if they are damaged or have deteriorated beyond practical use.
- d. We will prevent and abate fugitive dust as needed, whether created by vehicular traffic, equipment operations, or wind events. BLM written approval will be acquired before application of surfactants, binding agents, or other dust suppression chemicals on roadways.

## 2. New or Reconstructed Access Roads

- a. An access road will be needed for this proposed project. See the survey plat for the location of the access road.
- b. The length of access road needed to be constructed for this proposed project is about 134 feet.
- c. The maximum driving width of the access road will be 15 feet. The maximum width of surface disturbance when constructing the access road will not exceed 25 feet. All areas outside of the driving surface will be revegetated.
- d. The access road will be constructed with 6 inches of compacted native caliche.
- e. When the road travels on fairly level ground, the road will be crowned and ditched with a 2% slope from the tip of the road crown to the edge of the driving surface. The ditches will be 3 feet wide with 3:1 slopes. See Road Cross Section diagram below.



- f. The access road will be constructed with a ditch on each side of the road.
- g. The maximum grade for the access road will be 1 percent.
- h. No turnouts will be constructed on the proposed access road.
- i. No cattleguards will be installed for this proposed access road.
- j. No BLM right-of-way grant is needed for the construction of this access road.
- k. No culverts will be constructed for this proposed access road.
- l. No low water crossings will be constructed for the access road.
- m. Since the access road is on level ground, no lead-off ditches will be constructed for the proposed access road.
- n. Newly constructed or reconstructed roads, on surface under the jurisdiction of the Bureau of Land Management, will be constructed as outlined in the BLM "Gold Book" and to meet the standards of the anticipated traffic flow and all anticipated weather requirements as needed. Construction will include ditching, draining, crowning and capping or sloping and dipping the roadbed as necessary to provide a well-constructed and safe road.

### 3. Location of Existing Wells

- a. 1 MILE MAP of the APD depicts all known wells within a one mile radius of the proposed well.
- b. There is no other information regarding wells within a one mile radius.

### 4. Location of Existing and/or Proposed Production Facilities

- a. All permanent, lasting more than 6 months, above ground structures including but not limited to pumpjacks, storage tanks, barrels, pipeline risers, meter housing, etc. that are not subject to safety requirements will be painted a non-reflective paint color, Shale Green, from the BLM Standard Environmental Colors chart, unless another color is required in the APD Conditions of Approval.
- b. If any type of production facilities are located on the well pad, they will be strategically placed to allow for maximum interim reclamation, recontouring, and revegetation of the well location.
- c. Production from the proposed well will be transported to the production facility located on the Yeso Viking Federal #3. The location of the well is as follows: Sec. 23 T17S R27E; 2240' FSL & 1680' FWL.
- d. A pipeline to transport production will be installed from the proposed well to the existing production facility.
  - i. We plan to install a 4 inch surface polyethylene pipeline from the proposed well to the production facility. The proposed length of the pipeline will be 2943.3 feet. The working pressure of the pipeline will be 125 psi or less. If the pipeline route follows an existing road or buried pipeline right-of-way, the surface pipeline will be installed no farther than 10 feet from the edge of the road or buried pipeline right-of-way.



If existing surface pipelines prevent this distance, the proposed surface pipeline will be installed immediately adjacent to the outer surface pipeline. All construction and maintenance activity will be confined to existing roads or right-of-ways.

ii. *Survey of a Pipeline* <sup>JD 10-30-13</sup> depicts the proposed production pipeline route from the well to the production facility.

iii. The proposed pipeline does ~~not~~ cross lease boundaries, so a right of way grant will ~~not~~ need to be acquired from the BLM. *US 11-1-2013*

**If any plans change regarding the production facility or other infrastructure (pipeline, electric line, etc.), we will submit a sundry notice or right of way (if applicable) prior to installation or construction.**

### **Electric Line(s)**

- a. We plan to install an overhead electric line for the proposed well. The proposed length of the electric line will be 177 feet. Survey of an Electric Line depicts the location of the proposed electric line route. The electric line will be construction to provide protection from raptor electrocution.
- b. The proposed electric line does not cross lease boundaries, so a right of way grant will not need to be acquired from the BLM.

## **5. Location and Types of Water**

- a. The source and location of the water supply are as follows: This well will be drilled using a combination of water mud systems. It will be obtained from a commercial water stations in the area and will be hauled to location by transport truck using existing and proposed roads.
- b. The operator will use established or constructed oil and gas roads to transport water to the well site. The operator will try to utilize the identified access route in the surface use plan.

## **6. Construction Material**

- a. All caliche utilized for the drilling pad and proposed access road will be obtained from an existing BLM approved pit or from prevailing deposits found under the location. Will use BLM recommended use of extra caliche from other locations close by for roads, if available.

## **7. Methods for Handling Waste**

- a. Drilling fluids and produced oil and water from the well during drilling and completion operations will be stored safely and disposed of properly in an NMOCD approved disposal facility.
- b. Garbage and trash produced during drilling and completion operations will be collected in a trash container and disposed of properly at a state approved disposal facility. All trash on and around the well site will be collected for disposal.
- c. Human waste and grey water will be properly contained and disposed of properly at a state approved disposal facility.
- d. After drilling and completion operations, trash, chemicals, salts, frac sand and other waste material will be removed and disposed of properly at a state approved disposal facility.
- e. The well will be drilled utilizing a closed loop system. Drill cutting will be properly disposed of into steel tanks and taken to an NMOCD approved disposal facility.

## 8. Ancillary Facilities

- a. No ancillary facilities will be needed for this proposed project.

## 9. Well Site Layout

- a. The following information is presented in the well site survey plat or diagram:
  - i. reasonable scale (near 1":50')
  - ii. well pad dimensions
  - iii. well pad orientation
  - iv. drilling rig components
  - v. proposed access road
  - vi. elevations of all points
  - vii. topsoil stockpile
  - viii. reserve pit location/dimensions if applicable
  - ix. other disturbances needed (flare pit, stinger, frac farm pad, etc.)
  - x. existing structures within the 600' x 600' archaeological surveyed area (pipelines, electric lines, well pads, etc)
- b. The proposed drilling pad was staked and surveyed by a professional surveyor. The attached survey plat of the well site depicts the drilling pad layout as staked.
- c. A title of a well site diagram is Savanna 415 Rig Diagram. This diagram depicts the reclaimed area and dimensions of pad..
- d. Topsoil Salvaging
  - i. Grass, forbs, and small woody vegetation, such as mesquite will be excavated as the topsoil is removed. Large woody vegetation will be stripped and stored separately and respread evenly on the site following topsoil resspreading. Topsoil depth is defined as the top layer of soil that contains 80% of the roots. In areas to be heavily disturbed, the top 6 inches of soil material, will be stripped and stockpiled on the perimeter of the well location and along the perimeter of the access road to control run-on and run-off, to keep topsoil viable, and to make redistribution of topsoil more efficient during interim reclamation. Stockpiled topsoil should include vegetative material. Topsoil will be clearly segregated and stored separately from subsoils. Contaminated soil will not be stockpiled, but properly treated and handled prior to topsoil salvaging.

## 10. Plans for Surface Reclamation

### Reclamation Objectives

- i. The objective of interim reclamation is to restore vegetative cover and a portion of the landform sufficient to maintain healthy, biologically active topsoil; control erosion; and minimize habitat and forage loss, visual impact, and weed infestation, during the life of the well or facilities.
- ii. The long-term objective of final reclamation is to return the land to a condition similar to what existed prior to disturbance. This includes restoration of the landform and natural vegetative community, hydrologic systems, visual resources, and wildlife habitats. To ensure that the long-term objective will be reached through human and natural processes, actions will be taken to ensure standards are met for site stability, visual quality, hydrological functioning, and vegetative productivity.
- iii. The BLM will be notified at least 3 days prior to commencement of any reclamation procedures.

iv. If circumstances allow, interim reclamation and/or final reclamation actions will be completed no later than 6 months from when the final well on the location has been completed or plugged. We will gain written permission from the BLM if more time is needed.

v. Interim reclamation will be performed on the well site after the well is drilled and completed. Savanna 415 Rig Diagram depicts the location and dimensions of the planned interim reclamation for the well site.

#### **Interim Reclamation Procedures (If performed)**

1. Within 30 days of well completion, the well location and surrounding areas will be cleared of, and maintained free of, all materials, trash, and equipment not required for production.
2. In areas planned for interim reclamation, all the surfacing material will be removed and returned to the original mineral pit or recycled to repair or build roads and well pads.
3. The areas planned for interim reclamation will then be recontoured to the original contour if feasible, or if not feasible, to an interim contour that blends with the surrounding topography as much as possible. Where applicable, the fill material of the well pad will be backfilled into the cut to bring the area back to the original contour. The interim cut and fill slopes prior to re-seeding will not be steeper than a 3:1 ratio, unless the adjacent native topography is steeper. Note: Constructed slopes may be much steeper during drilling, but will be recontoured to the above ratios during interim reclamation.
4. Topsoil will be evenly respread and aggressively revegetated over the entire disturbed area not needed for all-weather operations including cuts & fills. To seed the area, the proper BLM seed mixture, free of noxious weeds, will be used. Final seedbed preparation will consist of contour cultivating to a depth of 4 to 6 inches within 24 hours prior to seeding, dozer tracking, or other imprinting in order to break the soil crust and create seed germination micro-sites.
5. Proper erosion control methods will be used on the area to control erosion, runoff and siltation of the surrounding area.
6. The interim reclamation will be monitored periodically to ensure that vegetation has reestablished and that erosion is controlled.

#### **Final Reclamation (well pad, buried pipelines, etc.)**

1. Prior to final reclamation procedures, the well pad, road, and surrounding area will be cleared of material, trash, and equipment.
2. All surfacing material will be removed and returned to the original mineral pit or recycled to repair or build roads and well pads.
3. All disturbed areas, including roads, pipelines, pads, production facilities, and interim reclaimed areas will be recontoured to the contour existing prior to initial construction or a contour that blends indistinguishably with the surrounding landscape. Topsoil that was spread over the interim reclamation areas will be stockpiled prior to recontouring. The topsoil will be redistributed evenly over the entire disturbed site to ensure successful revegetation.
4. After all the disturbed areas have been properly prepared, the areas will be seeded with the proper BLM seed mixture, free of noxious weeds. Final seedbed preparation will consist of contour cultivating to a depth of 4 to 6 inches within 24 hours prior to seeding, dozer tracking, or other imprinting in order to break the soil crust and create seed germination micro-sites.
5. Proper erosion control methods will be used on the entire area to control erosion, runoff and siltation

of the surrounding area.

6. All unused equipment and structures including pipelines, electric line poles, tanks, etc. that serviced the well will be removed.

7. All reclaimed areas will be monitored periodically to ensure that revegetation occurs, that the area is not redisturbed, and that erosion is controlled.

## **11. Surface Ownership**

- a. The surface ownership of the proposed project is federal.

## **12. Other Information**

- a. No other information is needed at this time.

## **13. Maps and Diagrams**

LOCATION VERIFICATION MAP - Existing Road

1 MILE MAP - Wells Within One Mile

YESO VIKING FLOWLINE ROUTING - Production Pipeline

Survey of an Electric Line - Electric Line

Savanna 415 Rig Diagram - Well Site Diagram

Savanna 415 Rig Diagram - Interim Reclamation

# PECOS DISTRICT CONDITIONS OF APPROVAL

<b>OPERATOR'S NAME:</b>	<b>OXY USA WTP LP</b>
<b>LEASE NO.:</b>	<b>NMNM-025527</b>
<b>WELL NAME &amp; NO.:</b>	<b>Yeso Viking Federal 24</b>
<b>SURFACE HOLE FOOTAGE:</b>	<b>2409' FSL &amp; 0876' FEL</b>
<b>BOOTOM HOLE FOOTAGE:</b>	<b>2160' FSL &amp; 0860' FEL</b>
<b>LOCATION:</b>	<b>Section 23, T. 17 S., R 27 E., NMPM</b>
<b>COUNTY:</b>	<b>Eddy County, New Mexico</b>

## TABLE OF CONTENTS

Standard Conditions of Approval (COA) apply to this APD. If any deviations to these standards exist or special COAs are required, the section with the deviation or requirement will be checked below.

- ☐ **General Provisions**
- ☐ **Permit Expiration**
- ☐ **Archaeology, Paleontology, and Historical Sites**
- ☐ **Noxious Weeds**
- ☒ **Special Requirements**
  - Cave/Karst
- ☐ **Construction**
  - Notification
  - Topsoil
  - Closed Loop System
  - Federal Mineral Material Pits
  - Well Pads
  - Roads
- ☐ **Road Section Diagram**
- ☒ **Drilling**
  - H2S Requirements
  - Cement Requirements
  - High Cave/Karst
  - Logging Requirements
  - Waste Material and Fluids
- ☒ **Production (Post Drilling)**
  - Well Structures & Facilities
  - Pipelines
  - Electric Lines
- ☐ **Interim Reclamation**
- ☐ **Final Abandonment & Reclamation**

## **I. GENERAL PROVISIONS**

The approval of the Application For Permit To Drill (APD) is in compliance with all applicable laws and regulations: 43 Code of Federal Regulations 3160, the lease terms, Onshore Oil and Gas Orders, Notices To Lessees, New Mexico Oil Conservation Division (NMOCD) Rules, National Historical Preservation Act As Amended, and instructions and orders of the Authorized Officer. Any request for a variance shall be submitted to the Authorized Officer on Form 3160-5, Sundry Notices and Report on Wells.

## **II. PERMIT EXPIRATION**

If the permit terminates prior to drilling and drilling cannot be commenced within 60 days after expiration, an operator is required to submit Form 3160-5, Sundry Notices and Reports on Wells, requesting surface reclamation requirements for any surface disturbance. However, if the operator will be able to initiate drilling within 60 days after the expiration of the permit, the operator must have set the conductor pipe in order to allow for an extension of 60 days beyond the expiration date of the APD. (Filing of a Sundry Notice is required for this 60 day extension.)

## **III. ARCHAEOLOGICAL, PALEONTOLOGY & HISTORICAL SITES**

Any cultural and/or paleontological resource discovered by the operator or by any person working on the operator's behalf shall immediately report such findings to the Authorized Officer. The operator is fully accountable for the actions of their contractors and subcontractors. The operator shall suspend all operations in the immediate area of such discovery until written authorization to proceed is issued by the Authorized Officer. An evaluation of the discovery shall be made by the Authorized Officer to determine the appropriate actions that shall be required to prevent the loss of significant cultural or scientific values of the discovery. The operator shall be held responsible for the cost of the proper mitigation measures that the Authorized Officer assesses after consultation with the operator on the evaluation and decisions of the discovery. Any unauthorized collection or disturbance of cultural or paleontological resources may result in a shutdown order by the Authorized Officer.

## **IV. NOXIOUS WEEDS**

The operator shall be held responsible if noxious weeds become established within the areas of operations. Weed control shall be required on the disturbed land where noxious weeds exist, which includes the roads, pads, associated pipeline corridor, and adjacent land affected by the establishment of weeds due to this action. The operator shall consult with the Authorized Officer for acceptable weed control methods, which include following EPA and BLM requirements and policies.

## **V. SPECIAL REQUIREMENT(S)**

### **Cave and Karst**

\*\* Depending on location, additional Drilling, Casing, and Cementing procedures may be required by engineering to protect critical karst groundwater recharge areas.

#### **Cave/Karst Surface Mitigation**

The following stipulations will be applied to minimize impacts during construction, drilling and production.

##### **Construction:**

In the advent that any underground voids are opened up during construction activities, construction activities will be halted and the BLM will be notified immediately.

##### **No Blasting:**

No blasting will be utilized for pad construction. The pad will be constructed and leveled by adding the necessary fill and caliche.

##### **Pad Berming:**

The pad will be bermed to prevent oil, salt, and other chemical contaminants from leaving the pad. All sides will be bermed.

##### **Tank Battery Liners and Berms:**

Tank battery locations will be lined and bermed. A 20 mil permanent liner will be installed with a 4 oz. felt backing to prevent tears or punctures. Tank battery berms must be large enough to contain 1 ½ times the content of the largest tank.

##### **Leak Detection System:**

A method of detecting leaks is required. The method could incorporate gauges to measure loss, siting valves and lines so they can be visually inspected, or installing electronic sensors to alarm when a leak is present. Leak detection plan will be submitted to BLM for approval.

##### **Automatic Shut-off Systems:**

Automatic shut off, check valves, or similar systems will be installed for pipelines and tanks to minimize the effects of catastrophic line failures used in production or drilling.

#### **Cave/Karst Subsurface Mitigation**

The following stipulations will be applied to protect cave/karst and ground water concerns:

##### **Rotary Drilling with Fresh Water:**

Fresh water will be used as a circulating medium in zones where caves or karst features are expected. SEE ALSO: Drilling COAs for this well.

**Directional Drilling:**

Kick off for directional drilling will occur at least 100 feet below the bottom of the cave occurrence zone. SEE ALSO: Drilling COAs for this well.

**Lost Circulation:**

ALL lost circulation zones from the surface to the base of the cave occurrence zone will be logged and reported in the drilling report.

Regardless of the type of drilling machinery used, if a void of four feet or more and circulation losses greater than 70 percent occur simultaneously while drilling in any cave-bearing zone, the BLM will be notified immediately by the operator. The BLM will assess the situation and work with the operator on corrective actions to resolve the problem.

**Abandonment Cementing:**

Upon well abandonment in high cave karst areas additional plugging conditions of approval may be required. The BLM will assess the situation and work with the operator to ensure proper plugging of the wellbore.

**Pressure Testing:**

Annual pressure monitoring will be performed by the operator on all casing annuli and reported in a sundry notice. If the test results indicated a casing failure has occurred, remedial action will be undertaken to correct the problem to the BLM's approval.

## **VI. CONSTRUCTION**

### **A. NOTIFICATION**

The BLM shall administer compliance and monitor construction of the access road and well pad. Notify the Carlsbad Field Office at (575) 234-5909 at least 3 working days prior to commencing construction of the access road and/or well pad.

When construction operations are being conducted on this well, the operator shall have the approved APD and Conditions of Approval (COA) on the well site and they shall be made available upon request by the Authorized Officer.

### **B. TOPSOIL**

The operator shall strip the top portion of the soil (root zone) from the entire well pad area and stockpile the topsoil along the edge of the well pad as depicted in the APD. The root zone is typically six (6) inches in depth. All the stockpiled topsoil will be redistributed over the interim reclamation areas. Topsoil shall not be used for berming



the pad or facilities. For final reclamation, the topsoil shall be spread over the entire pad area for seeding preparation.

Other subsoil (below six inches) stockpiles must be completely segregated from the topsoil stockpile. Large rocks or subsoil clods (not evident in the surrounding terrain) must be buried within the approved area for interim and final reclamation.

#### **C. CLOSED LOOP SYSTEM**

Tanks are required for drilling operations: No Pits.

The operator shall properly dispose of drilling contents at an authorized disposal site.

#### **D. FEDERAL MINERAL MATERIALS PIT**

Payment shall be made to the BLM prior to removal of any federal mineral materials. Call the Carlsbad Field Office at (575) 234-5972.

#### **E. WELL PAD SURFACING**

Surfacing of the well pad is not required.

If the operator elects to surface the well pad, the surfacing material may be required to be removed at the time of reclamation.

The well pad shall be constructed in a manner which creates the smallest possible surface disturbance, consistent with safety and operational needs.

#### **F. EXCLOSURE FENCING (CELLARS & PITS)**

##### **Exclosure Fencing**

The operator will install and maintain exclosure fencing for all open well cellars to prevent access to public, livestock, and large forms of wildlife before and after drilling operations until the pit is free of fluids and the operator initiates backfilling. (For examples of exclosure fencing design, refer to BLM's Oil and Gas Gold Book, Exclosure Fence Illustrations, Figure 1, Page 18.)

#### **G. ON LEASE ACCESS ROADS**

##### **Road Width**

The access road shall have a driving surface that creates the smallest possible surface disturbance and does not exceed fourteen (14) feet in width. The maximum width of surface disturbance, when constructing the access road, shall not exceed twenty-five (25) feet.

##### **Surfacing**

Surfacing material is not required on the new access road driving surface. If the operator elects to surface the new access road or pad, the surfacing material may be required to be removed at the time of reclamation.

Where possible, no improvements should be made on the unsurfaced access road other than to remove vegetation as necessary, road irregularities, safety issues, or to fill low areas that may sustain standing water.

The Authorized Officer reserves the right to require surfacing of any portion of the access road at any time deemed necessary. Surfacing may be required in the event the road deteriorates, erodes, road traffic increases, or it is determined to be beneficial for future field development. The surfacing depth and type of material will be determined at the time of notification.

### **Crowning**

Crowning shall be done on the access road driving surface. The road crown shall have a grade of approximately 2% (i.e., a 1" crown on a 14' wide road). The road shall conform to Figure 1; cross section and plans for typical road construction.

### **Ditching**

Ditching shall be required on both sides of the road.

### **Turnouts**

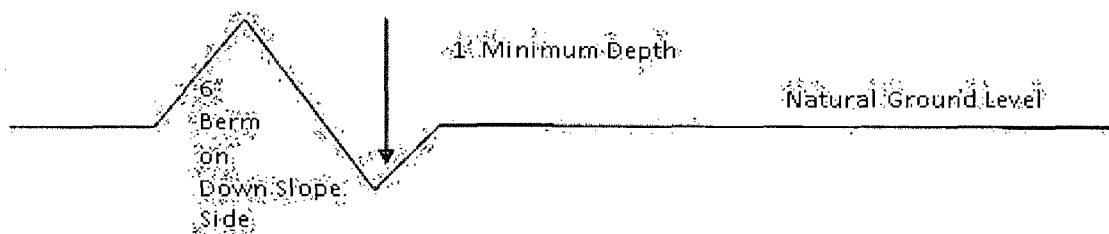
Vehicle turnouts shall be constructed on the road. Turnouts shall be intervisible with interval spacing distance less than 1000 feet. Turnouts shall conform to Figure 1; cross section and plans for typical road construction.

### **Drainage**

Drainage control systems shall be constructed on the entire length of road (e.g. ditches, sidehill outsloping and insloping, lead-off ditches, culvert installation, and low water crossings).

A typical lead-off ditch has a minimum depth of 1 foot below and a berm of 6 inches above natural ground level. The berm shall be on the down-slope side of the lead-off ditch.

**Cross Section of a Typical Lead-off Ditch**



All lead-off ditches shall be graded to drain water with a 1 percent minimum to 3 percent maximum ditch slope. The spacing interval are variable for lead-off ditches and shall be determined according to the formula for spacing intervals of lead-off ditches, but may be amended depending upon existing soil types and centerline road slope (in %);

#### **Formula for Spacing Interval of Lead-off Ditches**

Example - On a 4% road slope that is 400 feet long, the water flow shall drain water into a lead-off ditch. Spacing interval shall be determined by the following formula:

$$400 \text{ foot road with } 4\% \text{ road slope: } \frac{400'}{4\%} + 100' = 200' \text{ lead-off ditch interval}$$

#### **Culvert Installations**

Appropriately sized culverts shall be installed at deep waterway channel flow crossings through the road.

#### **Cattleguards**

An appropriately sized cattleguard sufficient to carry out the project shall be installed and maintained at fence/road crossings.

Any existing cattleguards on the access road route shall be repaired or replaced if they are damaged or have deteriorated beyond practical use. The operator shall be responsible for the condition of the existing cattleguards that are in place and are utilized during lease operations.

#### **Fence Requirement**

Where entry is granted across a fence line, the fence shall be braced and tied off on both sides of the passageway prior to cutting.

The operator shall notify the private surface landowner or the grazing allotment holder prior to crossing any fences.

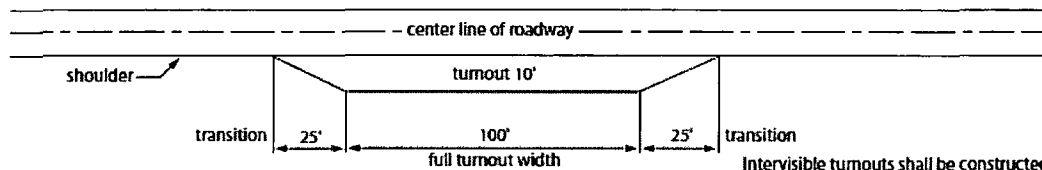
#### **Public Access**

Public access on this road shall not be restricted by the operator without specific written approval granted by the Authorized Officer.

## Construction Steps

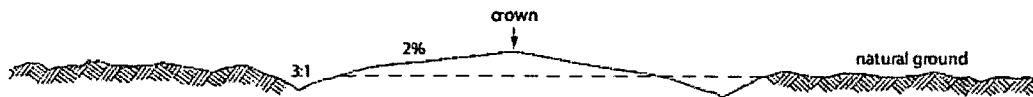
1. Salvage topsoil
2. Construct road

3. Redistribute topsoil
4. Revegetate slopes

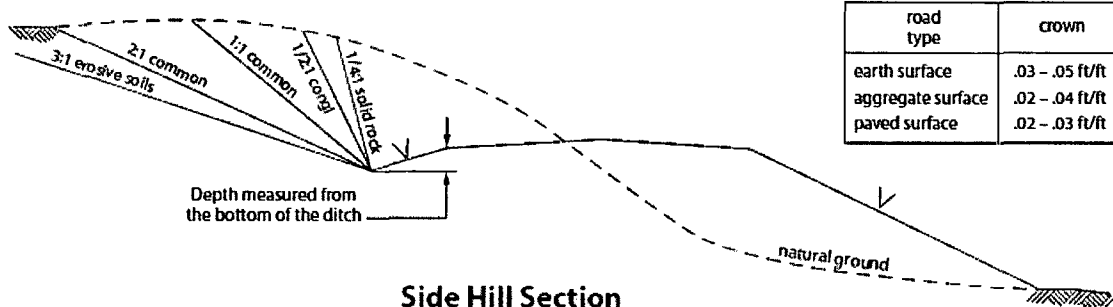


**Typical Turnout Plan**

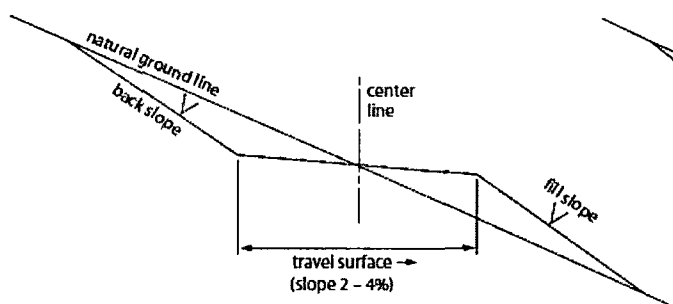
Intervisible turnouts shall be constructed on all single lane roads on all blind curves with additional turnouts as needed to keep spacing below 1000 feet.



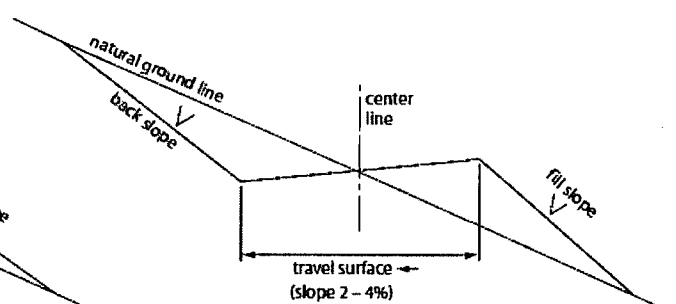
**Level Ground Section**



**Side Hill Section**



**Typical Outsloped Section**



**Typical Insloped Section**

Figure 1. Cross-sections and plans for typical road sections representative of BLM resource or FS local and higher-class roads.

## VII. DRILLING

### A. DRILLING OPERATIONS REQUIREMENTS

The BLM is to be notified in advance for a representative to witness:

- a. Spudding well (minimum of 24 hours)
- b. Setting and/or Cementing of all casing strings (minimum of 4 hours)
- c. BOPE tests (minimum of 4 hours)

☒ **Eddy County**

Call the Carlsbad Field Office, 620 East Greene St., Carlsbad, NM 88220,  
(575) 361-2822

1. A Hydrogen Sulfide (H<sub>2</sub>S) Drilling Plan shall be activated 500 feet prior to drilling into the **Glorieta** formation. **As a result, the Hydrogen Sulfide area must meet Onshore Order 6 requirements, which includes equipment and personnel/public protection items. If Hydrogen Sulfide is encountered, please provide measured values and formations to the BLM. Operator has stated that they will have monitoring equipment in place prior to drilling out of the surface shoe.**
2. Unless the production casing has been run and cemented or the well has been properly plugged, the drilling rig shall not be removed from over the hole without prior approval. **If the drilling rig is removed without approval – an Incident of Non-Compliance will be written and will be a “Major” violation.**
3. Floor controls are required for 3M or Greater systems. These controls will be on the rig floor, unobstructed, readily accessible to the driller and will be operational at all times during drilling and/or completion activities. Rig floor is defined as the area immediately around the rotary table; the area immediately above the substructure on which the draw works is located, this does not include the dog house or stairway area.
4. **The record of the drilling rate along with the GR/N well log run from TD to surface shall be submitted to the BLM office as well as all other logs run on the borehole 30 days from completion. If available, a digital copy of the logs is to be submitted in addition to the paper copies.**

### B. CASING

**Changes to the approved APD casing program need prior approval if the items substituted are of lesser grade or different casing size. The Operator can exchange the components of the proposal with that of superior strength (i.e. changing from J-55 to N-80, or from 36# to 40#). Changes to the approved cement program need prior approval if the altered cement plan has less volume or strength or if the changes are substantial (i.e. Multistage tool, ECP, etc.).**

**Centralizers required on surface casing per Onshore Order 2.III.B.1.f.**

**Wait on cement (WOC) time prior to drilling out for a primary cement job will be a minimum 18 hours for a water basin, 24 hours in the potash area, or 500 pounds compressive strength, whichever is greater for all casing strings. DURING THIS WOC TIME, NO DRILL PIPE, ETC. SHALL BE RUN IN THE HOLE. Provide compressive strengths including hours to reach required 500 pounds compressive strength prior to cementing each casing string. IF OPERATOR DOES NOT HAVE THE WELL SPECIFIC CEMENT DETAILS ONSITE PRIOR TO PUMPING THE CEMENT FOR EACH CASING STRING, THE WOC WILL BE 30 HOURS. See individual casing strings for details regarding lead cement slurry requirements.**

**No pea gravel permitted for remedial or fall back remedial without prior authorization from the BLM engineer.**

**Possible water flows in the Artesia Group.**

**Possible of lost circulation in the Grayburg and San Andres.**

**HIGH CAVE/KARST – CONTINGENCY CASING WILL BE REQUIRED IF LOST CIRCULATION OCCURS WHILE DRILLING THE SURFACE HOLE. THE SURFACE HOLE WILL HAVE TO BE REAMED AND A LARGER CASING INSTALLED. IF LOST CIRCULATION OCCURS WHILE DRILLING THE 7-7/8" HOLE, THE CEMENT PROGRAM FOR THE 5-1/2" CASING WILL NEED TO BE MODIFIED AND THE BLM IS TO BE CONTACTED PRIOR TO RUNNING THE CASING. A MINIMUM OF TWO CASING STRINGS CEMENTED TO SURFACE IS REQUIRED IN HIGH CAVE/KARST AREAS. THE CEMENT MUST BE IN A SOLID SHEATH THEREFORE, ONE INCH OPERATIONS WILL NOT BE PERMITTED. A DV TOOL WILL BE REQUIRED.**

1. The **8-5/8** inch surface casing shall be set at approximately **400** feet (a minimum of 25 feet into the Rustler Anhydrite and above the salt) and cemented to the surface.
  - a. If cement does not circulate to the surface, the appropriate BLM office shall be notified and a temperature survey utilizing an electronic type temperature survey with surface log readout will be used or a cement bond log shall be run to verify the top of the cement. Temperature survey will be run a minimum of six hours after pumping cement and ideally between 8-10 hours after completing the cement job.
  - b. **Wait on cement (WOC) time for a primary cement job is to include the lead cement slurry.**
  - c. Wait on cement (WOC) time for a remedial job will be a minimum of 4 hours after bringing cement to surface or 500 pounds compressive strength, whichever is greater.

- d. If cement falls back, remedial cementing will be done prior to drilling out that string.
2. The minimum required fill of cement behind the **5-1/2** inch production casing is:
  - ☒ Cement to surface. If cement does not circulate, contact the appropriate BLM office.
3. If hardband drill pipe is rotated inside casing, returns will be monitored for metal. If metal is found in samples, drill pipe will be pulled and rubber protectors which have a larger diameter than the tool joints of the drill pipe will be installed prior to continuing drilling operations.

### C. PRESSURE CONTROL

1. All blowout preventer (BOP) and related equipment (BOPE) shall comply with well control requirements as described in Onshore Oil and Gas Order No. 2 and API RP 53 Sec. 17.
2. Variance approved to use flex line from BOP to choke manifold. Check condition of flexible line from BOP to choke manifold, replace if exterior is damaged or if line fails test. Line to be as straight as possible with no hard bends and is to be anchored according to Manufacturer's requirements. The flexible hose can be exchanged with a hose of equal size and equal or greater pressure rating. **Anchor requirements, specification sheet and hydrostatic pressure test certification matching the hose in service, to be onsite for review. These documents shall be posted in the company man's trailer and on the rig floor.** If the BLM inspector questions the straightness of the hose, a BLM engineer will be contacted and will review in the field or via picture supplied by inspector to determine if changes are required (operator shall expect delays if this occurs).
3. Minimum working pressure of the blowout preventer (BOP) and related equipment (BOPE) required for drilling below the surface casing shoe shall be **3000 (3M)** psi.
4. The appropriate BLM office shall be notified a minimum of 4 hours in advance for a representative to witness the tests.
  - a. In a water basin, for all casing strings utilizing slips, these are to be set as soon as the crew and rig are ready and any fallback cement remediation has been done. The casing cut-off and BOP installation can be initiated four hours after installing the slips, which will be approximately six hours after bumping the plug. For those casing strings not using slips, the minimum wait time before cut-off is eight hours after bumping the plug. BOP/BOPE testing can begin after cut-off or once cement reaches 500 psi compressive strength (including lead when specified), whichever is greater. However, if the float does not

hold, cut-off cannot be initiated until cement reaches 500 psi compressive strength (including lead when specified).

- b. The tests shall be done by an independent service company utilizing a test plug **not a cup or J-packer**.
- c. The test shall be run on a 5000 psi chart for a 2-3M BOP/BOP, on a 10000 psi chart for a 5M BOP/BOPE and on a 15000 psi chart for a 10M BOP/BOPE. If a linear chart is used, it shall be a one hour chart. A circular chart shall have a maximum 2 hour clock.
- d. The results of the test shall be reported to the appropriate BLM office.
- e. All tests are required to be recorded on a calibrated test chart. **A copy of the BOP/BOPE test chart and a copy of independent service company test will be submitted to the appropriate BLM office.**
- f. The BOP/BOPE test shall include a low pressure test from 250 to 300 psi. The test will be held for a minimum of 10 minutes if test is done with a test plug and 30 minutes without a test plug. This test shall be performed prior to the test at full stack pressure.

#### **D. DRILL STEM TEST**

If drill stem tests are performed, Onshore Order 2.III.D shall be followed.

#### **E. WASTE MATERIAL AND FLUIDS**

All waste (i.e. drilling fluids, trash, salts, chemicals, sewage, gray water, etc.) created as a result of drilling operations and completion operations shall be safely contained and disposed of properly at a waste disposal facility. No waste material or fluid shall be disposed of on the well location or surrounding area.

Porto-johns and trash containers will be on-location during fracturing operations or any other crew-intensive operations.

**JAM 102413**



## **VIII. PRODUCTION (POST DRILLING)**

### **A. WELL STRUCTURES & FACILITIES**

#### **Placement of Production Facilities**

Production facilities should be placed on the well pad to allow for maximum interim recontouring and revegetation of the well location.

#### **Exclosure Netting (Open-top Tanks)**

Immediately following active drilling or completion operations, the operator will take actions necessary to prevent wildlife and livestock access, including avian wildlife, to all open-topped tanks that contain or have the potential to contain salinity sufficient to cause harm to wildlife or livestock, hydrocarbons, or Resource Conservation and Recovery Act of 1976-exempt hazardous substances. At a minimum, the operator will net, screen, or cover open-topped tanks to exclude wildlife and livestock and prevent mortality. If the operator uses netting, the operator will cover and secure the open portion of the tank to prevent wildlife entry. The operator will net, screen, or cover the tanks until the operator removes the tanks from the location or the tanks no longer contain substances that could be harmful to wildlife or livestock. Use a maximum netting mesh size of 1 ½ inches. The netting must not be in contact with fluids and must not have holes or gaps.

#### **Chemical and Fuel Secondary Containment and Exclosure Screening**

The operator will prevent all hazardous, poisonous, flammable, and toxic substances from coming into contact with soil and water. At a minimum, the operator will install and maintain an impervious secondary containment system for any tank or barrel containing hazardous, poisonous, flammable, or toxic substances sufficient to contain the contents of the tank or barrel and any drips, leaks, and anticipated precipitation. The operator will dispose of fluids within the containment system that do not meet applicable state or U. S. Environmental Protection Agency livestock water standards in accordance with state law; the operator must not drain the fluids to the soil or ground. The operator will design, construct, and maintain all secondary containment systems to prevent wildlife and livestock exposure to harmful substances. At a minimum, the operator will install effective wildlife and livestock exclosure systems such as fencing, netting, expanded metal mesh, lids, and grate covers. Use a maximum netting mesh size of 1 ½ inches.

#### **Open-Vent Exhaust Stack Exclosures**

The operator will construct, modify, equip, and maintain all open-vent exhaust stacks on production equipment to prevent birds and bats from entering, and to discourage perching, roosting, and nesting. (*Recommended exclosure structures on open-vent exhaust stacks are in the shape of a cone.*) Production equipment includes, but may not be limited to, tanks, heater-treaters, separators, dehydrators, flare stacks, in-line units, and compressor mufflers.

#### **Containment Structures**

Proposed production facilities such as storage tanks and other vessels will have a secondary containment structure that is constructed to hold the capacity of 1.5 times the

largest tank, plus freeboard to account for precipitation, unless more stringent protective requirements are deemed necessary.

### **Painting Requirement**

All above-ground structures including meter housing that are not subject to safety requirements shall be painted a flat non-reflective paint color, **Shale Green** from the BLM Standard Environmental Color Chart (CC-001: June 2008).

**B. PIPELINES (A Right-of-Way will be obtained prior to construction of the surface pipeline.)**

**C. ELECTRIC LINES**

### **STANDARD STIPULATIONS FOR OVERHEAD ELECTRIC DISTRIBUTION LINES**

**A copy of the grant and attachments, including stipulations, survey plat and/or map, will be on location during construction. BLM personnel may request to you a copy of your permit during construction to ensure compliance with all stipulations.**

Holder agrees to comply with the following stipulations to the satisfaction of the Authorized Officer:

1. The holder shall indemnify the United States against any liability for damage to life or property arising from the occupancy or use of public lands under this grant.
2. The holder shall comply with all applicable Federal laws and regulations existing or hereafter enacted or promulgated. In any event, the holder shall comply with the Toxic Substances Control Act of 1976 as amended, 15 USC 2601 et seq. (1982) with regards to any toxic substances that are used, generated by or stored on the right-of-way or on facilities authorized under this right-of-way grant. (See 40 CFR, Part 702-799 and especially, provisions on polychlorinated biphenyls, 40 CFR 761.1-761.193.) Additionally, any release of toxic substances (leaks, spills, etc.) in excess of the reportable quantity established by 40 CFR, Part 117 shall be reported as required by the Comprehensive Environmental Response, Compensation, and Liability Act, section 102b. A copy of any report required or requested by any Federal agency or State government as a result of a reportable release or spill of any toxic substances shall be furnished to the authorized officer concurrent with the filing of the reports to the involved Federal agency or State government.
3. The holder agrees to indemnify the United States against any liability arising from the release of any hazardous substance or hazardous waste (as these terms are defined in the Comprehensive Environmental Response, Compensation and Liability Act of 1980, 42 U.S.C. 9601, et seq. or the Resource Conservation and Recovery Act, 42 U.S.C. 6901, et seq.) on the Right-of-Way (unless the release or threatened release is wholly unrelated to the Right-of-Way holder's activity on the Right-of-Way), or resulting from the activity of

the Right-of-Way holder on the Right-of-Way. This agreement applies without regard to whether a release is caused by the holder, its agent, or unrelated third parties.

4. There will be no clearing or blading of the right-of-way unless otherwise agreed to in writing by the Authorized Officer.

5. Power lines shall be constructed and designed in accordance to standards outlined in "Suggested Practices for Avian Protection on Power lines: The State of the Art in 2006" Edison Electric Institute, APLIC, and the California Energy Commission 2006 . The holder shall assume the burden and expense of proving that pole designs not shown in the above publication deter raptor perching, roosting, and nesting. Such proof shall be provided by a raptor expert approved by the Authorized Officer. The BLM reserves the right to require modification or additions to all powerline structures placed on this right-of-way, should they be necessary to ensure the safety of large perching birds. Such modifications and/or additions shall be made by the holder without liability or expense to the United States.

Raptor deterrence will consist of but not limited to the following: triangle perch discouragers shall be placed on each side of the cross arms and a nonconductive perching deterrence shall be placed on all vertical poles that extend past the cross arms.

6. The holder shall minimize disturbance to existing fences and other improvements on public lands. The holder is required to promptly repair improvements to at least their former state. Functional use of these improvements will be maintained at all times. The holder will contact the owner of any improvements prior to disturbing them. When necessary to pass through a fence line, the fence shall be braced on both sides of the passageway prior to cutting the fence. No permanent gates will be allowed unless approved by the Authorized Officer.

7. The BLM serial number assigned to this authorization shall be posted in a permanent, conspicuous manner where the power line crosses roads and at all serviced facilities. Numbers will be at least two inches high and will be affixed to the pole nearest the road crossing and at the facilities served.

8. Upon cancellation, relinquishment, or expiration of this grant, the holder shall comply with those abandonment procedures as prescribed by the Authorized Officer.

9. All surface structures (poles, lines, transformers, etc.) shall be removed within 180 days of abandonment, relinquishment, or termination of use of the serviced facility or facilities or within 180 days of abandonment, relinquishment, cancellation, or expiration of this grant, whichever comes first. This will not apply where the power line extends service to an active, adjoining facility or facilities.

10. Any cultural and/or paleontological resource (historic or prehistoric site or object)

discovered by the holder, or any person working on his behalf, on public or Federal land shall be immediately reported to the Authorized Officer. Holder shall suspend all operations in the immediate area of such discovery until written authorization to proceed is issued by the Authorized Officer. An evaluation of the discovery will be made by the Authorized Officer to determine appropriate actions to prevent the loss of significant cultural or scientific values. The holder will be responsible for the cost of evaluation and any decision as to proper mitigation measures will be made by the Authorized Officer after consulting with the holder.

11. Special Stipulations:

- For reclamation remove poles, lines, transformer, etc. and dispose of properly.
- Fill in any holes with native soil.

## **IX. INTERIM RECLAMATION**

During the life of the development, all disturbed areas not needed for active support of production operations should undergo interim reclamation in order to minimize the environmental impacts of development on other resources and uses.

Within six (6) months of well completion, operators should work with BLM surface management specialists (Jim Amos: 575-234-5909) to devise the best strategies to reduce the size of the location. Interim reclamation should allow for remedial well operations, as well as safe and efficient removal of oil and gas.

During reclamation, the removal of caliche is important to increasing the success of revegetating the site. Removed caliche that is free of contaminants may be used for road repairs, fire walls or for building other roads and locations. In order to operate the well or complete workover operations, it may be necessary to drive, park and operate on restored interim vegetation within the previously disturbed area. Disturbing revegetated areas for production or workover operations will be allowed. If there is significant disturbance and loss of vegetation, the area will need to be revegetated. Communicate with the appropriate BLM office for any exceptions/exemptions if needed.

All disturbed areas after they have been satisfactorily prepared need to be reseeded with the seed mixture provided below.

Upon completion of interim reclamation, the operator shall submit a Sundry Notices and Reports on Wells, Subsequent Report of Reclamation (Form 3160-5).

## **X. FINAL ABANDONMENT & RECLAMATION**

At final abandonment, well locations, production facilities, and access roads must undergo "final" reclamation so that the character and productivity of the land are restored.

Earthwork for final reclamation must be completed within six (6) months of well plugging. All pads, pits, facility locations and roads must be reclaimed to a satisfactory

revegetated, safe, and stable condition, unless an agreement is made with the landowner or BLM to keep the road and/or pad intact.

After all disturbed areas have been satisfactorily prepared, these areas need to be revegetated with the seed mixture provided below. Seeding should be accomplished by drilling on the contour whenever practical or by other approved methods. Seeding may need to be repeated until revegetation is successful, as determined by the BLM.

Operators shall contact a BLM surface protection specialist prior to surface abandonment operations for site specific objectives (Jim Amos: 575-234-5909).

#### Seed Mixture 1, for Loamy Sites

The holder shall seed all disturbed areas with the seed mixture listed below. The seed mixture shall be planted in the amounts specified in pounds of pure live seed (PLS)\* per acre. There shall be no primary or secondary noxious weeds in the seed mixture. Seed will be tested and the viability testing of seed will be done in accordance with State law(s) and within nine (9) months prior to purchase. Commercial seed will be either certified or registered seed. The seed container will be tagged in accordance with State law(s) and available for inspection by the authorized officer.

Seed will be planted using a drill equipped with a depth regulator to ensure proper depth regulator to ensure proper depth of planting where drilling is possible. The seed mixture will be evenly and uniformly planted over the disturbed area (small/heavier seeds have a tendency to drop the bottom of the drill and are planted first). The holder shall take appropriate measures to ensure this does not occur. Where drilling is not possible, seed will be broadcast and the area shall be raked or chained to cover the seed. When broadcasting the seed, the pounds per acre are to be doubled. The seeding will be repeated until a satisfactory stand is established as determined by the authorized officer. Evaluation of growth will not be made before completion of at least one full growing season after seeding.

Species to be planted in pounds of pure live seed\* per acre:

<u>Species</u>	<u>lb/acre</u>
Plains lovegrass ( <i>Eragrostis intermedia</i> )	0.5
Sand dropseed ( <i>Sporobolus cryptandrus</i> )	1.0
Sideoats grama ( <i>Bouteloua curtipendula</i> )	5.0
Plains bristlegrass ( <i>Setaria macrostachya</i> )	2.0

\*Pounds of pure live seed:

Pounds of seed x percent purity x percent germination = pounds pure live seed