

DISTRICT I
1625 N. French Dr., Hobbs, NM 88240
Phone (575) 393-6161 Fax: (575) 393-0720

DISTRICT II
811 S. First St., Artesia, NM 88210
Phone (575) 748-1283 Fax: (575) 748-0720

DISTRICT III
1000 Rio Brazos Rd., Aztec, NM 87410
Phone (505) 334-6178 Fax: (505) 334-6170

DISTRICT IV
1220 S. St. Francis Dr., Santa Fe, NM 87505
Phone (505) 476-3460 Fax: (505) 476-3462

State of New Mexico
Energy, Minerals and Natural Resources Department

OIL CONSERVATION DIVISION
1220 South St. Francis Dr.
Santa Fe, New Mexico 87505

Form C-102
August 1, 2011

Revised
Submit one copy to appropriate District Office

RECEIVED
JAN 07 2014
NMOCD ARTESIA

WELL LOCATION AND ACREAGE DEDICATION PLAT

AMENDED REPORT

Actual

API Number 30-015-40862	Pool Code U4450	Pool Name Willow Lake ; Bone Spring
Property Code 39572	Property Name COLT STATE COM	Well Number 2H
OGRID No. 258894	Operator Name LEGEND NATURAL GAS III, L.P.	Elevation 3037'

Surface Location

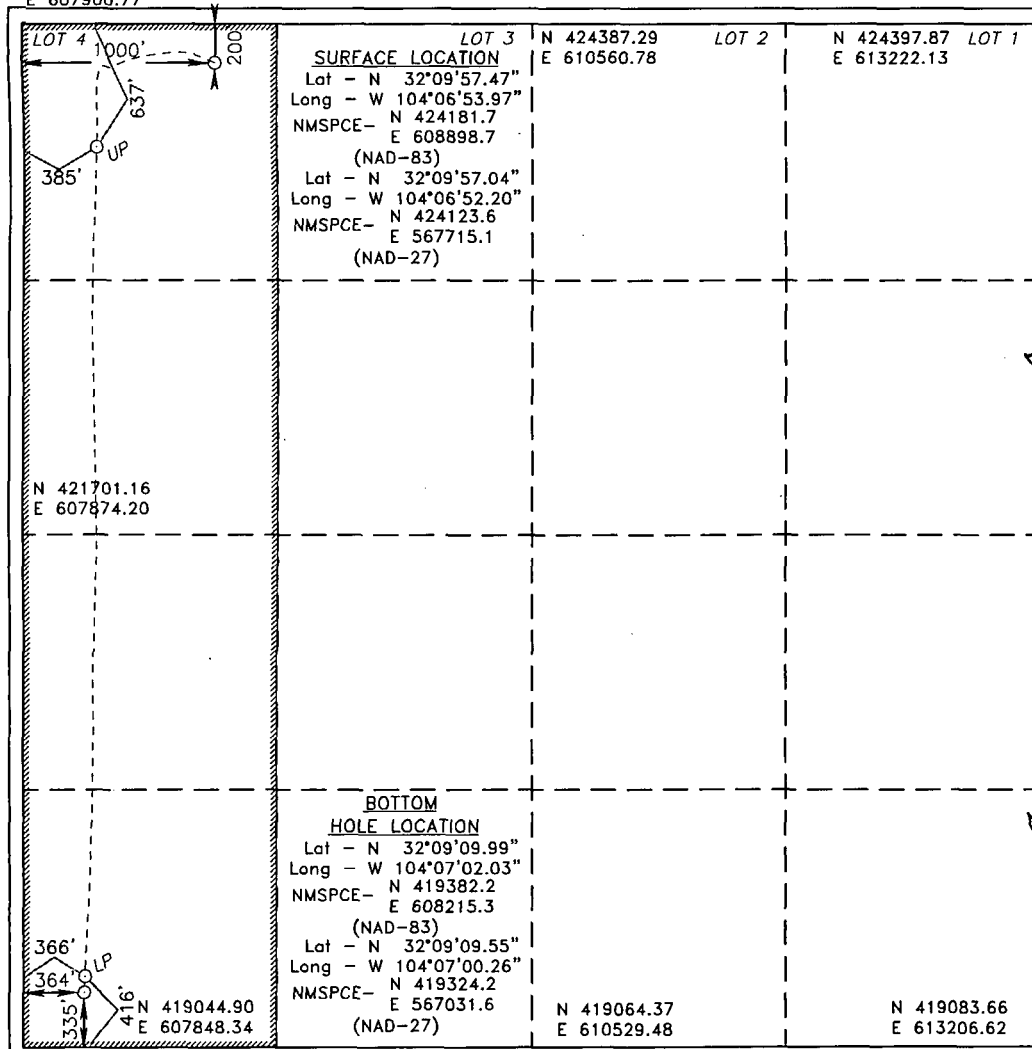
UL or lot No.	Section	Township	Range	Lot Idn	Feet from the	North/South line	Feet from the	East/West line	County
LOT 4	5	25 S	28 E		200	NORTH	1000	WEST	EDDY

Bottom Hole Location If Different From Surface

UL or lot No.	Section	Township	Range	Lot Idn	Feet from the	North/South line	Feet from the	East/West line	County
M	5	25 S	28 E		335	SOUTH	364	WEST	EDDY
Dedicated Acres	Joint or Infill	Consolidation Code	Order No.						

NO ALLOWABLE WILL BE ASSIGNED TO THIS COMPLETION UNTIL ALL INTERESTS HAVE BEEN CONSOLIDATED
OR A NON-STANDARD UNIT HAS BEEN APPROVED BY THE DIVISION

N 424378.15
E 607900.77



OPERATOR CERTIFICATION

I hereby certify that the information contained herein is true and complete to the best of my knowledge and belief, and that this organization either owns a working interest or unleased mineral interest in the land including the proposed bottom hole location or has a right to drill this well at this location pursuant to a contract with an owner of such a mineral or working interest, or to a voluntary pooling agreement or a compulsory pooling order heretofore entered by the division.

Signature: *Jennifer Moeley Elrod* Date: *12/14/2013*

Printed Name: **JENNIFER MOELEY ELROD**

Email Address: **elrod@ng2.com**

SURVEYOR CERTIFICATION

I hereby certify that the well location shown on this plat was plotted from field notes of actual surveys made by me or under my supervision, and that the same is true and correct to the best of my belief.

Date Surveyed: *12/14/2013*

Signature: *Gary L. Jones* Seal of Professional Surveyor: *7977*

Certificate No. **Gary L. Jones 7977**

Basin Surveys: **28601**