

DISTRICT I
1625 N. French Dr., Hobbs, NM 88240
Phone (505) 393-8161 Fax: (505) 393-0720

DISTRICT II
811 S. First St., Artesia, NM 88210
Phone (505) 748-1283 Fax: (505) 748-0720

DISTRICT III
1000 Rio Brazos Rd., Aztec, NM 87410
Phone (505) 334-6178 Fax: (505) 334-6170

DISTRICT IV
1220 S. St. Francis Dr., Santa Fe, NM 87505
Phone (505) 476-3460 Fax: (505) 476-3462

State of New Mexico
Energy, Minerals and Natural Resources Department

OIL CONSERVATION DIVISION
1220 South St. Francis Dr.
Santa Fe, New Mexico 87505

RECEIVED

JAN 15 2014

Form C-102
Revised August 1, 2011
Submit one copy to appropriate
District Office

WELL LOCATION AND ACREAGE DEDICATION PLAT

☐ AMENDED REPORT

API Number 30-015-41646	Pool Code 49622	Pool Name Parkway Bone Spring
Property Code 39023	Property Name PARKWAY 35 FEDERAL COM	Well Number 6H
OGRID No. 154903	Operator Name SM ENERGY Company	Elevation 3332

Surface Location

UL or lot No.	Section	Township	Range	Lot Idn	Feet from the	North/South line	Feet from the	East/West line	County
1	34	19 S	29 E		1700	SOUTH	5	EAST	EDDY

Bottom Hole Location If Different From Surface

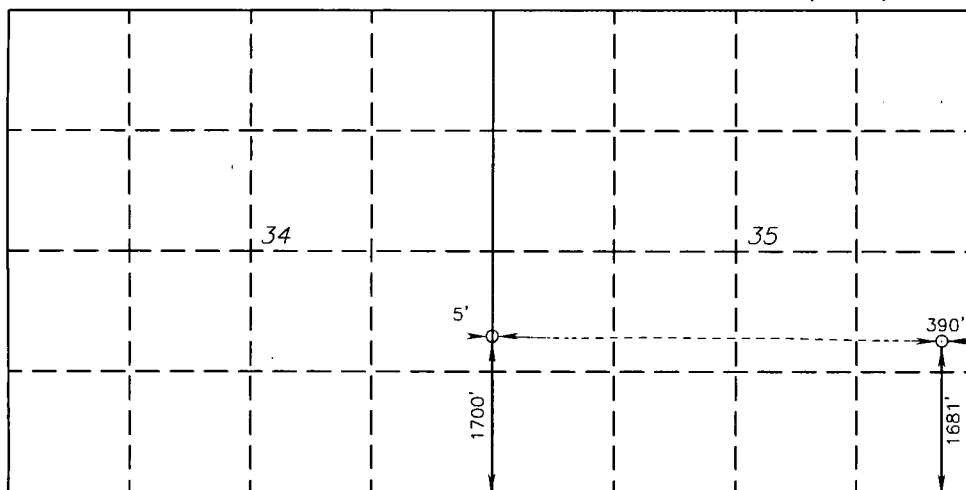
UL or lot No.	Section	Township	Range	Lot Idn	Feet from the	North/South line	Feet from the	East/West line	County
1	35	19 S	29 E		1681	SOUTH	390	EAST	EDDY

Dedicated Acres	Joint or Infill	Consolidation Code	Order No.
160			

NO ALLOWABLE WILL BE ASSIGNED TO THIS COMPLETION UNTIL ALL INTERESTS HAVE BEEN CONSOLIDATED
OR A NON-STANDARD UNIT HAS BEEN APPROVED BY THE DIVISION

SURFACE LOCATION
Lat - N 32°36'52.47"
Long - W 104°03'14.99"
NMSPCE- N 587426.77
E 627294.28
(NAD-83)

BOTTOM HOLE LOCATION
Lat - N 32°36'51.87"
Long - W 104°02'17.78"
NMSPCE- N 587379.2
E 632187.7
(NAD-83)



OPERATOR CERTIFICATION

I hereby certify that the information contained herein is true and complete to the best of my knowledge and belief, and that this organization either owns a working interest or unleased mineral interest in the land including the proposed bottom hole location or has a right to drill this well at this location pursuant to a contract with an owner of such a mineral or working interest, or to a voluntary pooling agreement or a compulsory pooling order heretofore entered by the division.

Vicac Martinez 11/13/13
Signature Date

Vicac Martinez
Printed Name

vmartinez@sm-energy.com
Email Address

SURVEYOR CERTIFICATION

I hereby certify that the well location shown on this plat was plotted from field notes of actual surveys made by me or under my supervision and that the same is true and correct to the best of my belief.

GARY L. JONES
Date Surveyed
Signature & Seal of
Professional Surveyor
7977
Certificate No. 28486

Certificate No. Gary L. Jones 7977
BASIN SURVEYS 28486