

**RECEIVED**

FEB 18 2014

Form C-102

Revised August 1, 2011

One copy to appropriate

District Office

☐ AMENDED REPORT

**District I**  
1625 N. French Dr., Hobbs, NM 88240  
Phone: (575) 393-6161 Fax: (575) 393-0720

**District II**  
811 S. First St., Artesia, NM 88210  
Phone: (575) 748-1283 Fax: (575) 748-9720

**District III**  
1000 Rio Brazos Road, Aztec, NM 87410  
Phone: (505) 334-6178 Fax: (505) 334-6170

**District IV**  
1220 S. St. Francis Dr., Santa Fe, NM 87505  
Phone: (505) 476-3460 Fax: (505) 476-3462

State of New Mexico  
Energy, Minerals & Natural Resources Department  
**OIL CONSERVATION DIVISION**  
1220 South St. Francis Dr.  
Santa Fe, NM 87505

**WELL LOCATION AND ACREAGE DEDICATION PLAT**

<sup>1</sup> API Number <b>30015-42082</b>	<sup>2</sup> Pool Code 39350	<sup>3</sup> Pool Name Livingston Ridge; Bone Spring
<sup>4</sup> Property Code <b>40396</b>	<sup>5</sup> Property Name <b>ARK 36 STATE</b>	<sup>6</sup> Well Number <b>1H</b>
<sup>7</sup> OGRID No. <b>6137</b>	<sup>8</sup> Operator Name <b>DEVON ENERGY PRODUCTION COMPANY, L.P.</b>	<sup>9</sup> Elevation <b>3450.2</b>

<sup>10</sup> Surface Location

UL or lot no.	Section	Township	Range	Lot Idn	Feet from the	North/South line	Feet from the	East/West line	County
<b>M</b>	<b>36</b>	<b>22 S</b>	<b>31 E</b>		<b>200</b>	<b>SOUTH</b>	<b>795</b>	<b>WEST</b>	<b>EDDY</b>

<sup>11</sup> Bottom Hole Location If Different From Surface

UL or lot no.	Section	Township	Range	Lot Idn	Feet from the	North/South line	Feet from the	East/West line	County
<b>D</b>	<b>36</b>	<b>22 S</b>	<b>31 E</b>		<b>330</b>	<b>NORTH</b>	<b>660</b>	<b>WEST</b>	<b>EDDY</b>

<sup>12</sup> Dedicated Acres 160	<sup>13</sup> Joint or Infill	<sup>14</sup> Consolidation Code	<sup>15</sup> Order No.
--------------------------------------	-------------------------------	----------------------------------	-------------------------

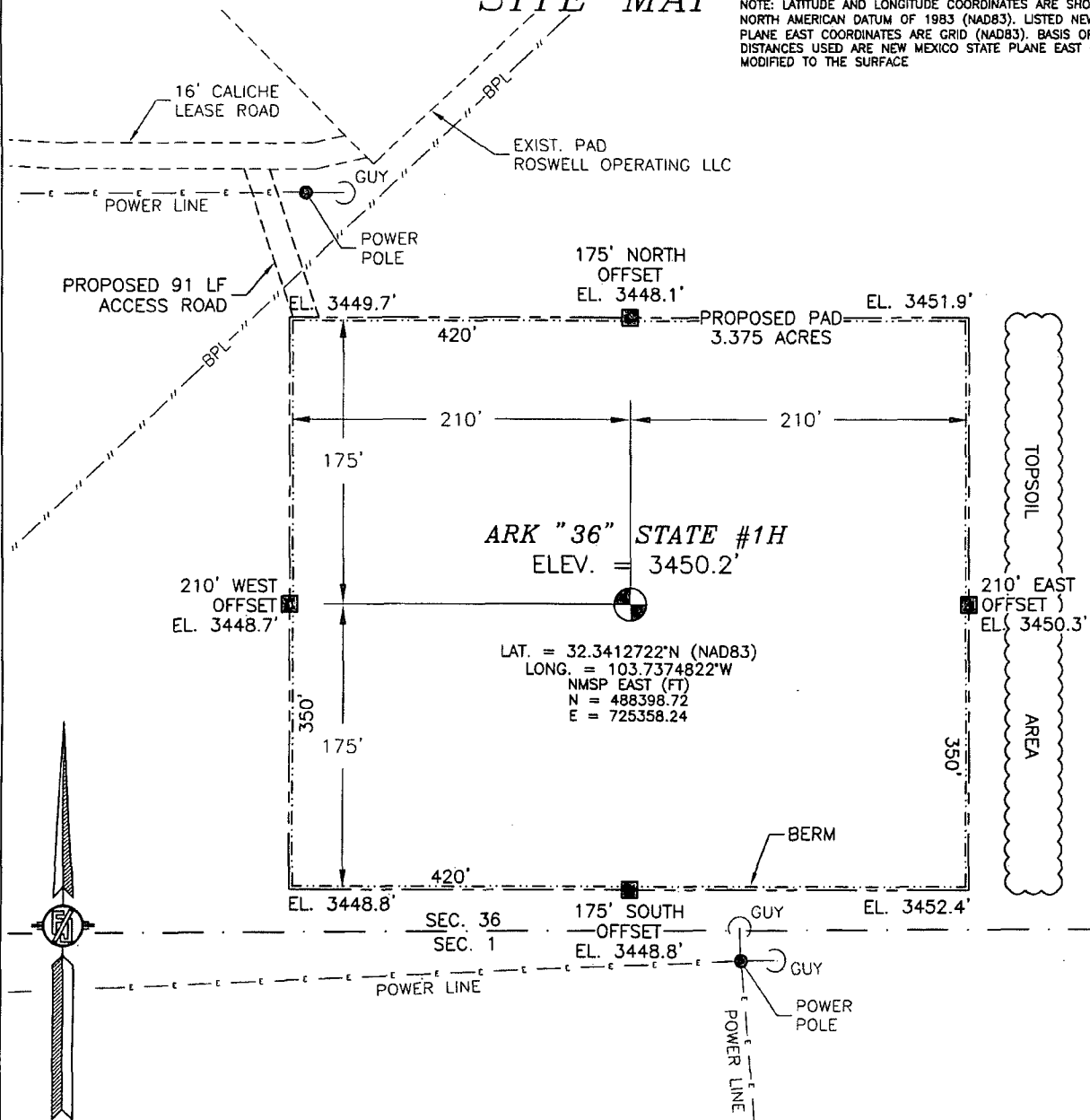
No allowable will be assigned to this completion until all interests have been consolidated or a non-standard unit has been approved by the division.

<p>N89°55'39"E 2645.92 FT</p> <p>NW CORNER SEC. 36 LAT. = 32.8552397°N LONG. = 103.7400617°W</p> <p>NMSP EAST (FT) N = 493475.63 E = 724563.44</p> <p>BOTTOM OF HOLE</p> <p>BOTTOM OF HOLE LAT. = 32.3543520°N LONG. = 103.7379279°W NMSP EAST (FT) N = 493156.34 E = 725194.13</p> <p>W Q CORNER SEC. 36 LAT. = 32.3479770°N LONG. = 103.7400589°W</p> <p>NMSP EAST (FT) N = 490833.46 E = 724548.94</p> <p>ARK "36" STATE #1H ELEV. = 3450.2' LAT. = 32.3412722°N (NAD83) LONG. = 103.7374822°W NMSP EAST (FT) N = 488398.72 E = 725358.24</p> <p>SURFACE LOCATION</p> <p>SW CORNER SEC. 36 LAT. = 32.3407245°N LONG. = 103.7400556°W NMSP EAST (FT) N = 488195.03 E = 724564.59</p> <p>S O CORNER SEC. 36 LAT. = 32.3407180°N LONG. = 103.7315040°W NMSP EAST (FT) N = 488207.42 E = 727205.71</p> <p>SE CORNER SEC. 36 LAT. = 32.3407105°N LONG. = 103.7229557°W NMSP EAST (FT) N = 488219.63 E = 729845.81</p> <p>589°43'53"W 2641.72 FT</p> <p>589°44'06"W 2640.70 FT</p>	<p>N89°55'39"E 2645.92 FT</p> <p>NE CORNER SEC. 36 LAT. = 32.3551764°N LONG. = 103.7229288°W</p> <p>NMSP EAST (FT) N = 493482.33 E = 729824.11</p> <p>NOTE: LATITUDE AND LONGITUDE COORDINATES ARE SHOWN USING THE NORTH AMERICAN DATUM OF 1983 (NAD83). LISTED NEW MEXICO STATE PLANE EAST COORDINATES ARE GRID (NAD83). BASIS OF BEARING AND DISTANCES USED ARE NEW MEXICO STATE PLANE EAST COORDINATES MODIFIED TO THE SURFACE.</p> <p>500°08'35"E 2625.35 FT</p> <p>500°19'44"E 2638.54 FT</p>	<p><b>17 OPERATOR CERTIFICATION</b></p> <p>I hereby certify that the information contained herein is true and complete to the best of my knowledge and belief, and that this organization either owns a working interest or unleased mineral interest in the land including the proposed bottom hole location or has a right to drill this well at this location pursuant to a contract with an owner of such a mineral or working interest, or to a voluntary pooling agreement or a compulsory pooling order heretofore entered by the division.</p> <p><i>Trina C. Couch</i> 2/17/14 Signature Date</p> <p>Trina C. Couch, Regulatory Analyst Printed Name</p> <p>trina.couch@dmn.com E-mail Address</p> <p><b>18 SURVEYOR CERTIFICATION</b></p> <p>I hereby certify that the well location shown on this plat was plotted from field notes of actual surveys made by me or under my supervision, and that the same is true and correct to the best of my belief.</p> <p>NOVEMBER 14, 2013 Date of Survey</p> <p><i>William F. Jaramillo</i> Signature and Seal of Professional Surveyor</p> <p>Certificate Number: WILLIAM F. JARAMILLO, PLS 12797 SURVEY NO. 2463</p>
---	--	--

SECTION 36, TOWNSHIP 22 SOUTH, RANGE 31 EAST, N.M.P.M.  
EDDY COUNTY, STATE OF NEW MEXICO

SITE MAP

NOTE: LATITUDE AND LONGITUDE COORDINATES ARE SHOWN USING THE NORTH AMERICAN DATUM OF 1983 (NAD83). LISTED NEW MEXICO STATE PLANE EAST COORDINATES ARE GRID (NAD83). BASIS OF BEARING AND DISTANCES USED ARE NEW MEXICO STATE PLANE EAST COORDINATES MODIFIED TO THE SURFACE



LAT. = 32.3412722°N (NAD83)  
LONG. = 103.7374822°W  
NMSP EAST (FT)  
N = 488398.72  
E = 725358.24

010 50 100 200

SCALE 1" = 100'

DIRECTIONS TO LOCATION

FROM THE INTERSECTION OF SR 128 (JAL. HIGHWAY) AND CR 798 (RED ROAD) GO NORTH ON CR 798 8.2 MILES TO CALICHE LEASE ROAD ON RIGHT, GO EAST 0.15 MILES TO PROPOSED ROAD ON RIGHT, FOLLOW FLAGS ABOUT 90° TO NORTHWEST CORNER OF PAD.

DEVON ENERGY PRODUCTION COMPANY, L.P.

ARK "36" STATE #1H

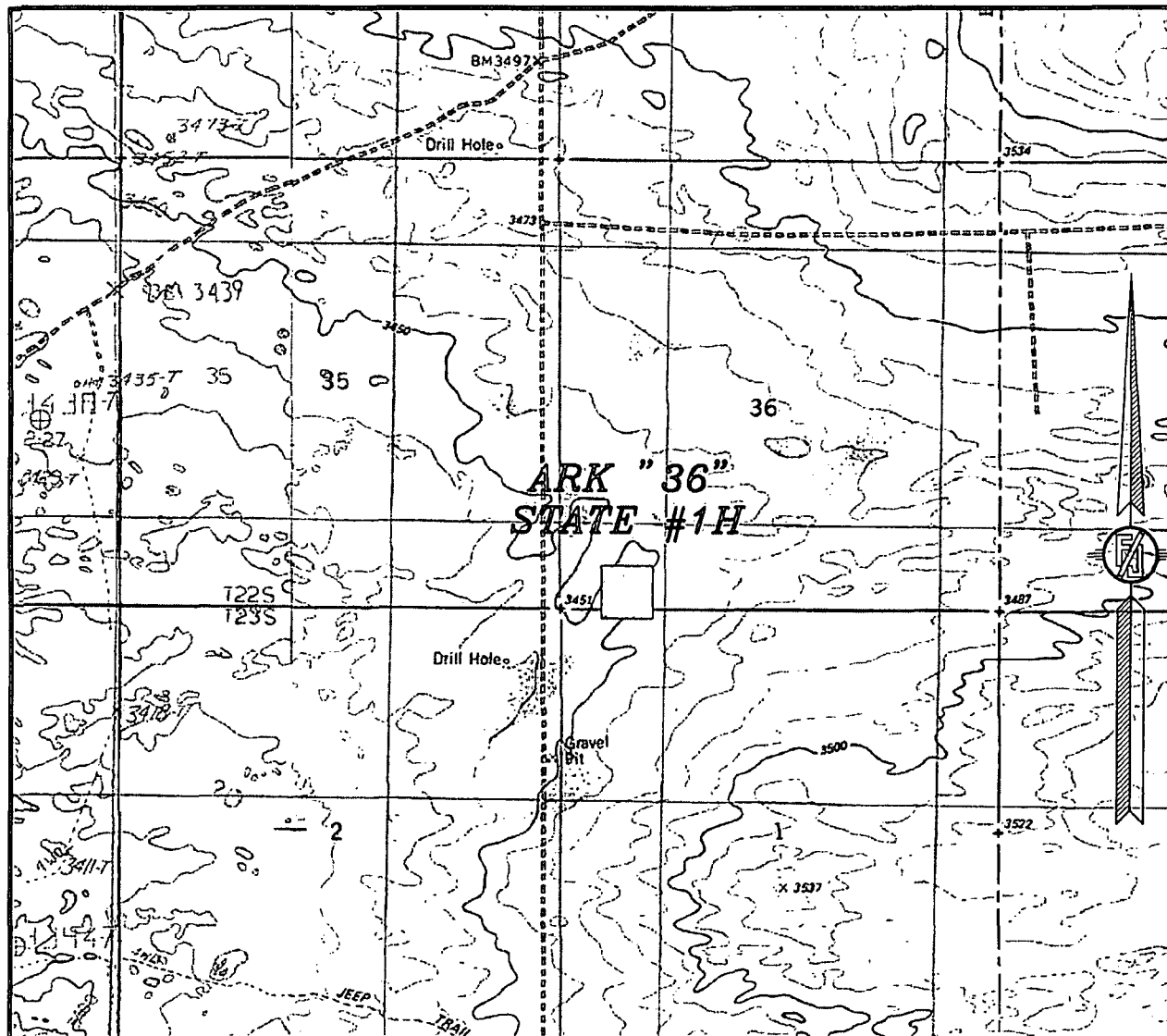
LOCATED 200 FT. FROM THE SOUTH LINE  
AND 795 FT. FROM THE WEST LINE OF  
SECTION 36, TOWNSHIP 22 SOUTH,  
RANGE 31 EAST, N.M.P.M.  
EDDY COUNTY, STATE OF NEW MEXICO

NOVEMBER 14, 2013

SURVEY NO. 2463

MADRON SURVEYING, INC. 301 SOUTH CANAL (575) 234-3341 CARLSBAD, NEW MEXICO

SECTION 36, TOWNSHIP 22 SOUTH, RANGE 31 EAST, N.M.P.M.  
EDDY COUNTY, STATE OF NEW MEXICO  
LOCATION VERIFICATION MAP



USGS QUAD MAP:  
BOOTLEG RIDGE

NOT TO SCALE

DEVON ENERGY PRODUCTION COMPANY, L.P.

**ARK "36" STATE #1H**

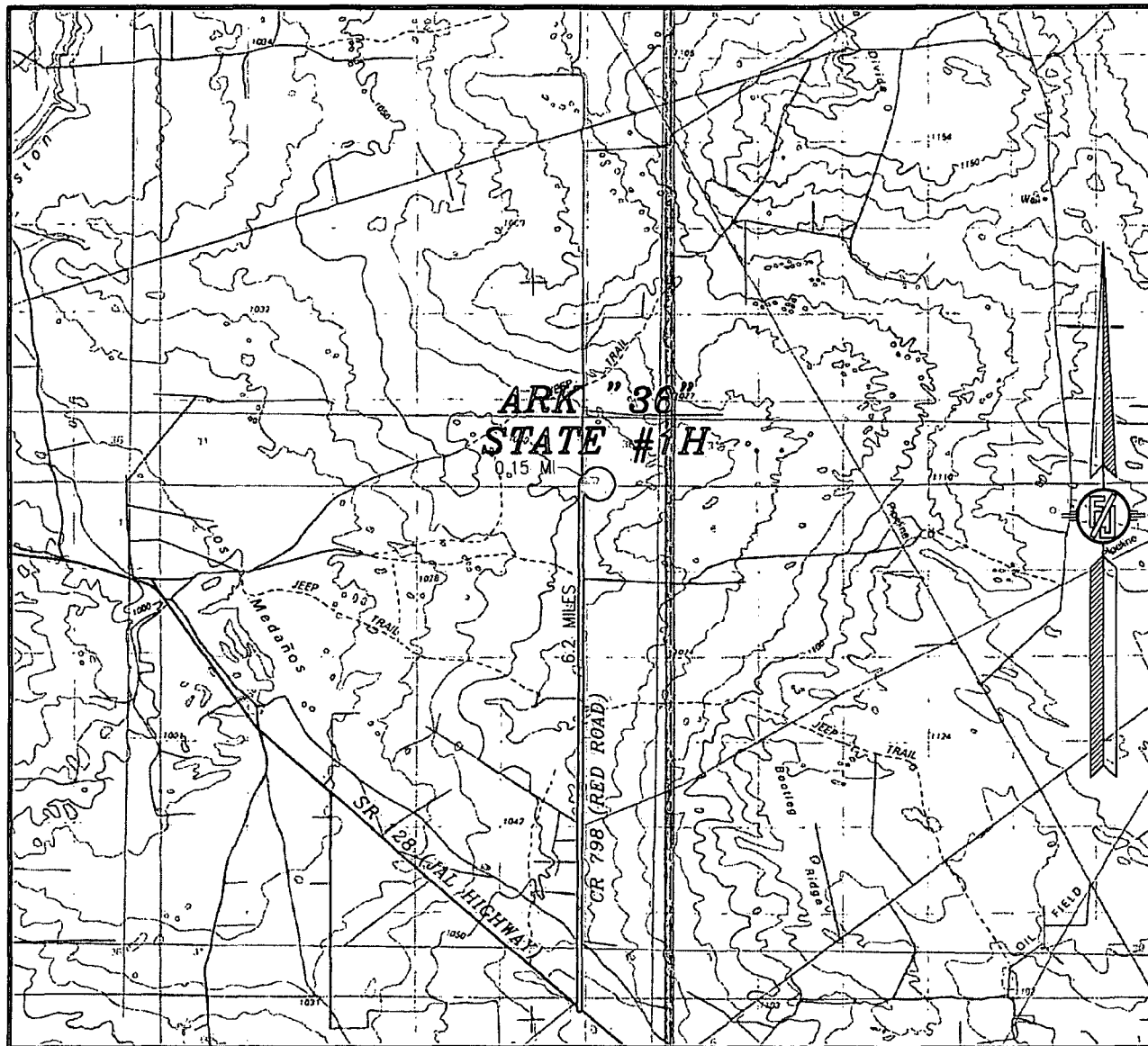
LOCATED 200 FT. FROM THE SOUTH LINE  
AND 795 FT. FROM THE WEST LINE OF  
SECTION 36, TOWNSHIP 22 SOUTH,  
RANGE 31 EAST, N.M.P.M.  
EDDY COUNTY, STATE OF NEW MEXICO

NOVEMBER 14, 2013

SURVEY NO. 2463

MADRON SURVEYING, INC. 301 SOUTH CANAL (575) 234-3341 CARLSBAD, NEW MEXICO

SECTION 36, TOWNSHIP 22 SOUTH, RANGE 31 EAST, N.M.P.M.  
EDDY COUNTY, STATE OF NEW MEXICO  
VICINITY MAP



NOT TO SCALE

DEVON ENERGY PRODUCTION COMPANY, L.P.

**ARK "36" STATE #1H**

LOCATED 200 FT. FROM THE SOUTH LINE  
AND 795 FT. FROM THE WEST LINE OF  
SECTION 36, TOWNSHIP 22 SOUTH,  
RANGE 31 EAST, N.M.P.M.  
EDDY COUNTY, STATE OF NEW MEXICO

**DIRECTIONS TO LOCATION**

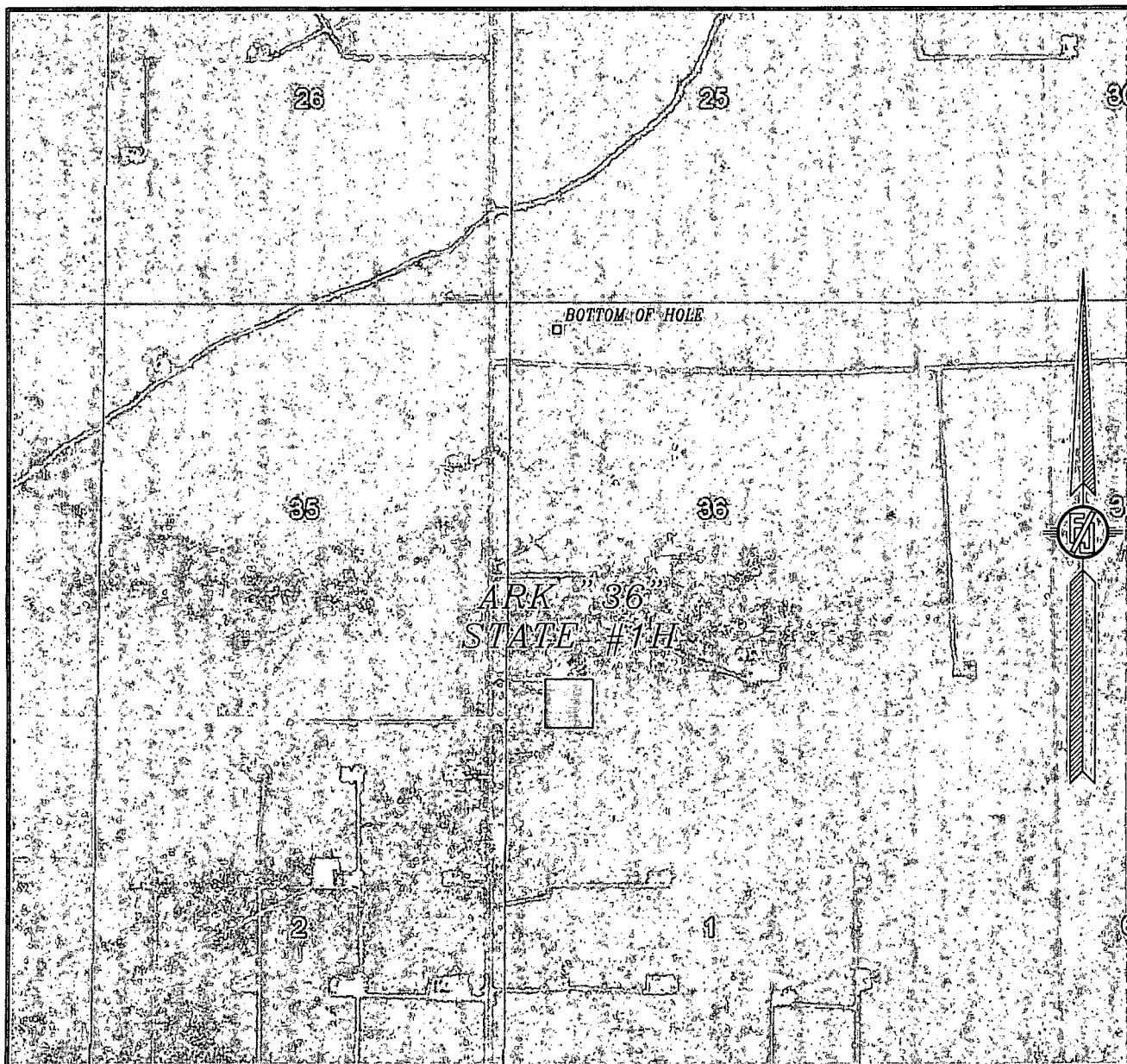
FROM THE INTERSECTION OF SR 128 (JAL HIGHWAY) AND CR 798 (RED ROAD) GO NORTH ON CR 798 6.2 MILES TO CALICHE LEASE ROAD ON RIGHT, GO EAST 0.15 MILES TO PROPOSED ROAD ON RIGHT, FOLLOW FLAGS ABOUT 90' TO NORTHWEST CORNER OF PAD.

NOVEMBER 14, 2013

SURVEY NO. 2463

MADRON SURVEYING, INC. 301 SOUTH CANAL (575) 234-3341 CARLSBAD, NEW MEXICO

SECTION 36, TOWNSHIP 22 SOUTH, RANGE 31 EAST, N.M.P.M.  
EDDY COUNTY, STATE OF NEW MEXICO  
AERIAL PHOTO



NOT TO SCALE  
AERIAL PHOTO:  
GOOGLE EARTH  
MARCH 2012

DEVON ENERGY PRODUCTION COMPANY, L.P.

ARK "36" STATE #1H

LOCATED 200 FT. FROM THE SOUTH LINE  
AND 795 FT. FROM THE WEST LINE OF  
SECTION 36, TOWNSHIP 22 SOUTH,  
RANGE 31 EAST, N.M.P.M.  
EDDY COUNTY, STATE OF NEW MEXICO

NOVEMBER 14, 2013

SURVEY NO. 2463

MADRON SURVEYING, INC. 301 SOUTH CANAL (575) 234-3341 CARLSBAD, NEW MEXICO