

DISTRICT I
1625 N. French Dr., Hobbs, NM 88240
DISTRICT II
1301 W. Grand Avenue, Artesia, NM 88210
DISTRICT III
1000 Rio Brazos Rd., Aztec, NM 87410
DISTRICT IV
1220 S. St. Francis Dr., Santa Fe, NM 87505

State of New Mexico
Energy, Minerals and Natural Resources Department

OIL CONSERVATION DIVISION
1220 South St. Francis Dr.
Santa Fe, New Mexico 87505

RECEIVED

FEB 25 2014

Submit one copy to appropriate District Office

Form C-102
Revised July 16, 2010

WELL LOCATION AND ACREAGE DEDICATION PLAT

☐ AMENDED REPORT

API Number 30-015-41420	Pool Code 49622	Pool Name Parkway Bone Spring
Property Code 39931	Property Name TWO MESAS "7" MP Fed	Well Number 1H
OGRID No. 14744	Operator Name MEWBOURNE OIL COMPANY	Elevation 3314'

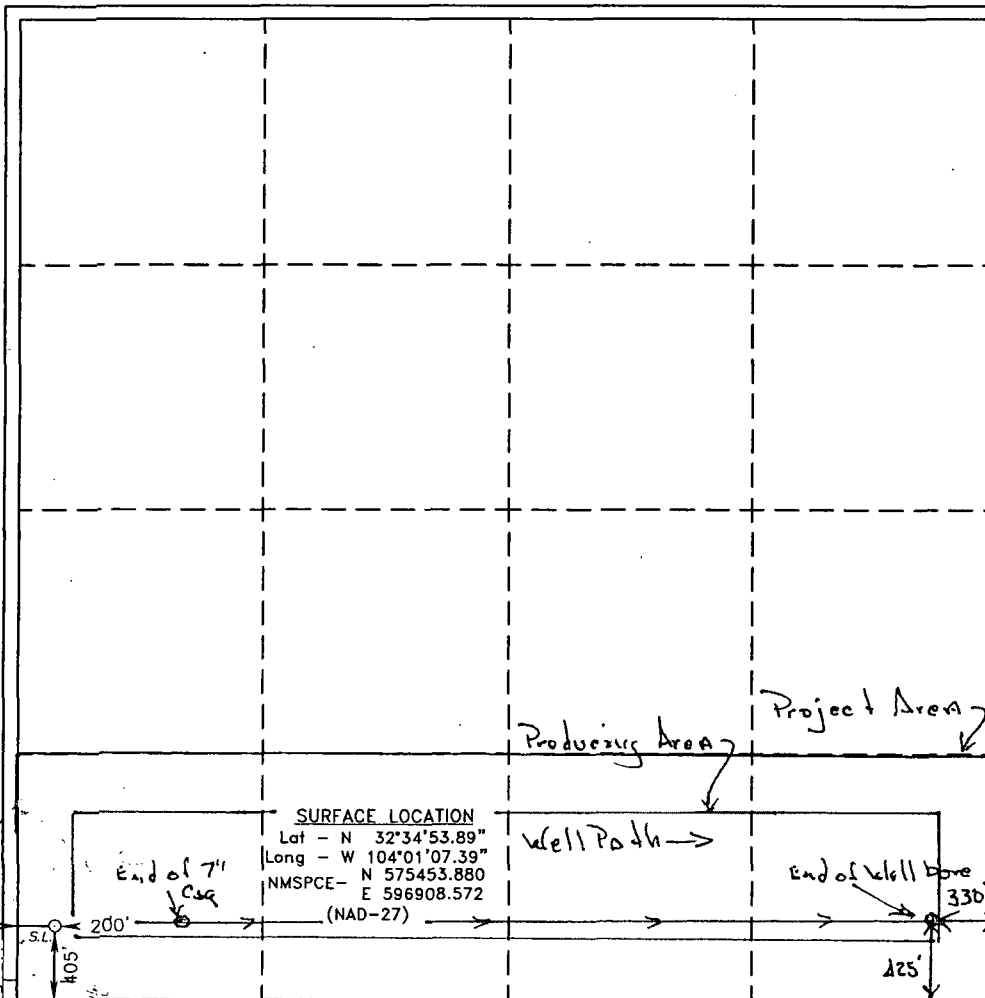
Surface Location

UL or lot No. 4	Section 7	Township 20 S	Range 30 E	Lot Idn	Feet from the 405	North/South line SOUTH	Feet from the 200	East/West line WEST	County EDDY
--------------------	--------------	------------------	---------------	---------	----------------------	---------------------------	----------------------	------------------------	----------------

Bottom Hole Location If Different From Surface

UL or lot No. P	Section 7	Township 20 S	Range 30 E	Lot Idn	Feet from the 425	North/South line South	Feet from the 330	East/West line East	County Eddy
Dedicated Acres 159.27	Joint or Infill	Consolidation Code	Order No.						

NO ALLOWABLE WILL BE ASSIGNED TO THIS COMPLETION UNTIL ALL INTERESTS HAVE BEEN CONSOLIDATED
OR A NON-STANDARD UNIT HAS BEEN APPROVED BY THE DIVISION



OPERATOR CERTIFICATION

I hereby certify that the information contained herein is true and complete to the best of my knowledge and belief, and that this organization either owns a working interest or unleased mineral interest in the land including the proposed bottom hole location or has a right to drill this well at this location pursuant to a contract with an owner of such a mineral or working interest, or to a voluntary pooling agreement or a compulsory pooling order heretofore entered by the division.

Signature: *[Signature]* Date: 1/2/14

Printed Name: M. H. Young

Email Address:

SURVEYOR CERTIFICATION

I hereby certify that the well location shown on this plat was plotted from field notes of actual surveys made by me or under my supervision and that the same is true and correct to the best of my belief.

Date Surveyed: JAN 16 2014
Signature & Seal of Professional Surveyor: *[Signature]*
W.C. 10-23888

Certificate No. Gary L. Jones 7977

Basin Surveys 23980