

District I
1625 N. French Dr., Hobbs, NM 88240
District II
1301 W. Grand Avenue, Artesia, NM 88210
District III
1000 Rio Brazos Rd., Aztec, NM 87410
District IV
1220 S. St. Francis Dr., Santa Fe, NM 87505

State of New Mexico
Energy, Minerals & Natural Resources Department
OIL CONSERVATION DIVISION
1220 South St. Francis Dr.
Santa Fe, NM 87505

Form C-102
Revised October 15, 2009
Submit one copy to appropriate
District Office

☒ AMENDED REPORT

WELL LOCATION AND ACREAGE DEDICATION PLAT

¹ API Number 30-015-40035	² Pool Code 65010	³ Pool Name WINCHESTER; BONE SPRING
⁴ Property Code 38500	⁵ Property Name JASPER 32 STATE COM	
⁶ OGRID No. 6137	⁷ Operator Name DEVON ENERGY PRODUCTION COMPANY, L.P.	
		⁸ Well Number 3H
		⁹ Elevation 3266.5

¹⁰ Surface Location

UL or lot no.	Section	Township	Range	Lot Idn	Feet from the	North/South line	Feet from the	East/West line	County
B	32	19 S	29 E		340	NORTH	1700	EAST	EDDY

¹¹ Bottom Hole Location If Different From Surface

UL or lot no.	Section	Township	Range	Lot Idn	Feet from the	North/South line	Feet from the	East/West line	County
O	32	19 S	29 E		347	SOUTH	1699	EAST	EDDY

¹² Dedicated Acres	¹³ Joint or Infill	¹⁴ Consolidation Code	¹⁵ Order No.

No allowable will be assigned to this completion until all interests have been consolidated or a non-standard unit has been approved by the division.

NW CORNER SEC. 32 LAT. = 32.6245965°N LONG. = 104.1055679°W NMSP EAST (FT) N = 591034.18 E = 611459.34		NE CORNER SEC. 32 LAT. = 32.6245465°N LONG. = 104.0884181°W NMSP EAST (FT) N = 591027.73 E = 616739.26
JASPER 32 STATE 3H ELEV. = 3266.5' LAT. = 32.6236313°N (NAD83) LONG. = 104.0939398°W NMSP EAST (FT) N = 590690.89 E = 615040.04		
BOTTOM OF HOLE LAT. = 32.6109864°N LONG. = 104.0939588°W NMSP EAST (FT) N = 586090.62 E = 615044.52		
SW CORNER SEC. 32 LAT. = 32.6100917°N LONG. = 104.1055775°W NMSP EAST (FT) N = 585757.25 E = 611467.89	BOTTOM OF HOLE 1699'	SE CORNER SEC. 32 LAT. = 32.6100388°N LONG. = 104.0884410°W NMSP EAST (FT) N = 585749.72 E = 616744.32

17 OPERATOR CERTIFICATION
 I hereby certify that the information contained herein is true and complete to the best of my knowledge and belief, and that this organization either owns a working interest or undivided mineral interest in the land including the proposed bottom hole location or has a right to drill this well at this location pursuant to a contract with an owner of such a mineral or working interest, or to a voluntary pooling agreement or a compulsory pooling order heretofore entered by the division.

Erin Workman 05.05.14
 Signature
 Printed Name **Erin Workman,**

Regulatory Compliance Prof.

18 SURVEYOR CERTIFICATION
 I hereby certify that the well location shown on this plat was plotted from field notes of actual surveys made by me or under my supervision, and that the same is true and correct to the best of my belief.

FEBRUARY 23, 2012
 Date of Survey

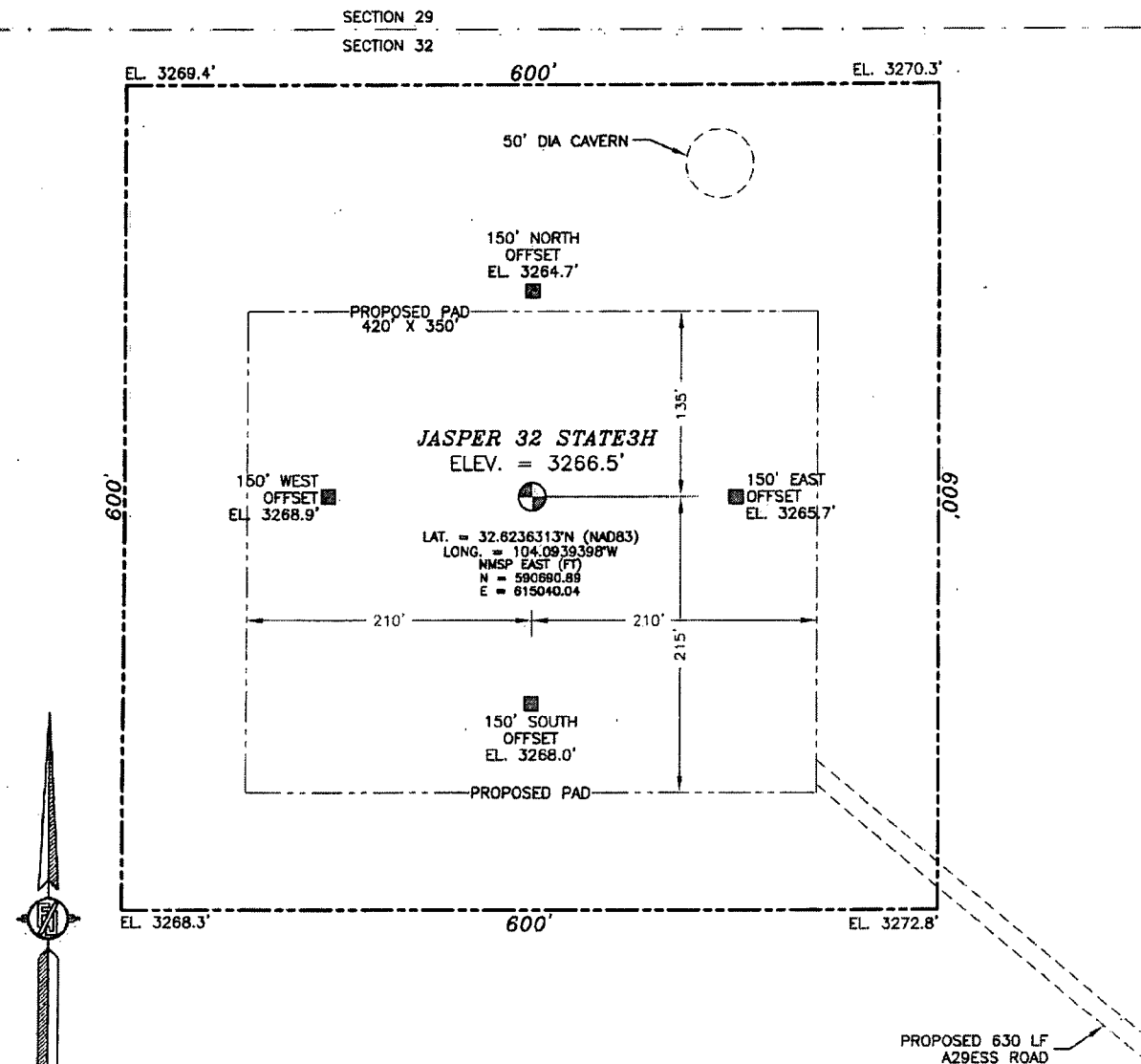
[Signature]
 Signature and Seal of Professional Surveyor
 Certificate Number **FILMON F. JARAMILLO, PLS 12797**
 SURVEY NO. 806

1ST PERFORATION POINT: 1700' FEL & 880' FNL

☐ PROJECT AREA
☒ PRODUCING AREA

email 5-13-14
 B

SECTION 32, TOWNSHIP 19 SOUTH, RANGE 29 EAST, N.M.P.M.
EDDY COUNTY, STATE OF NEW MEXICO



0 12 60 120 240

SCALE 1" = 120'

DIRECTIONS TO LOCATION

FROM THE INTERSECTION OF Cr 206 (ILLINOIS CAMP) AND Cr 235
(CURRY COMB. RD) GO SOUTHEAST ON Cr 235 7.4 MILES TAKE
CALICHE LEASE RD ON RIGHT (SOUTH) OVER A YELLOW CATTLE
GUARD, GO 3.85 MILES TO CALICHE RD ON LEFT (NORTH) GO NORTH
0.25 MILES THEN TURN LEFT WEST ABOUT 100 FT TO OXY PEARL
STATE #2 SITE IS ABOUT 1000 FT NW OF SITE.

DEVON ENERGY PRODUCTION COMPANY, L.P.
JASPER 32 STATE 3H

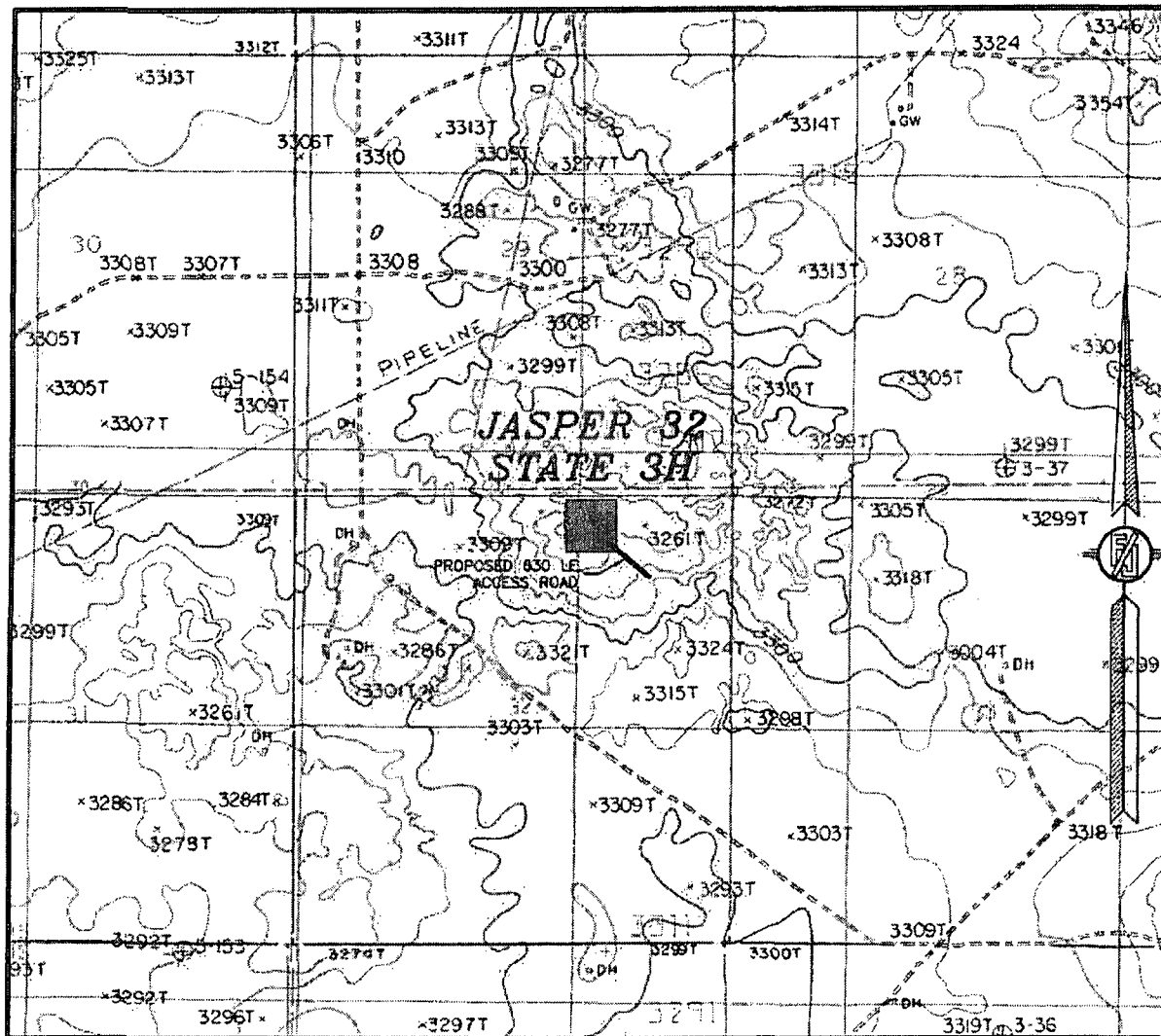
LOCATED 340 FT. FROM THE NORTH LINE
AND 1700 FT. FROM THE EAST LINE OF
SECTION 32, TOWNSHIP 19 SOUTH,
RANGE 29 EAST, N.M.P.M.
EDDY COUNTY, STATE OF NEW MEXICO

FEBRUARY 23, 2012

SURVEY NO. 806

MADRON SURVEYING, INC. 301 SOUTH CANAL CARLSBAD, NEW MEXICO
(575) 234-3341

SECTION 32, TOWNSHIP 19 SOUTH, RANGE 29 EAST, N.M.P.M.
 EDDY COUNTY, STATE OF NEW MEXICO
 LOCATION VERIFICATION MAP



USGS QUAD MAP:
 ILLINOIS CAMP SE

NOT TO SCALE

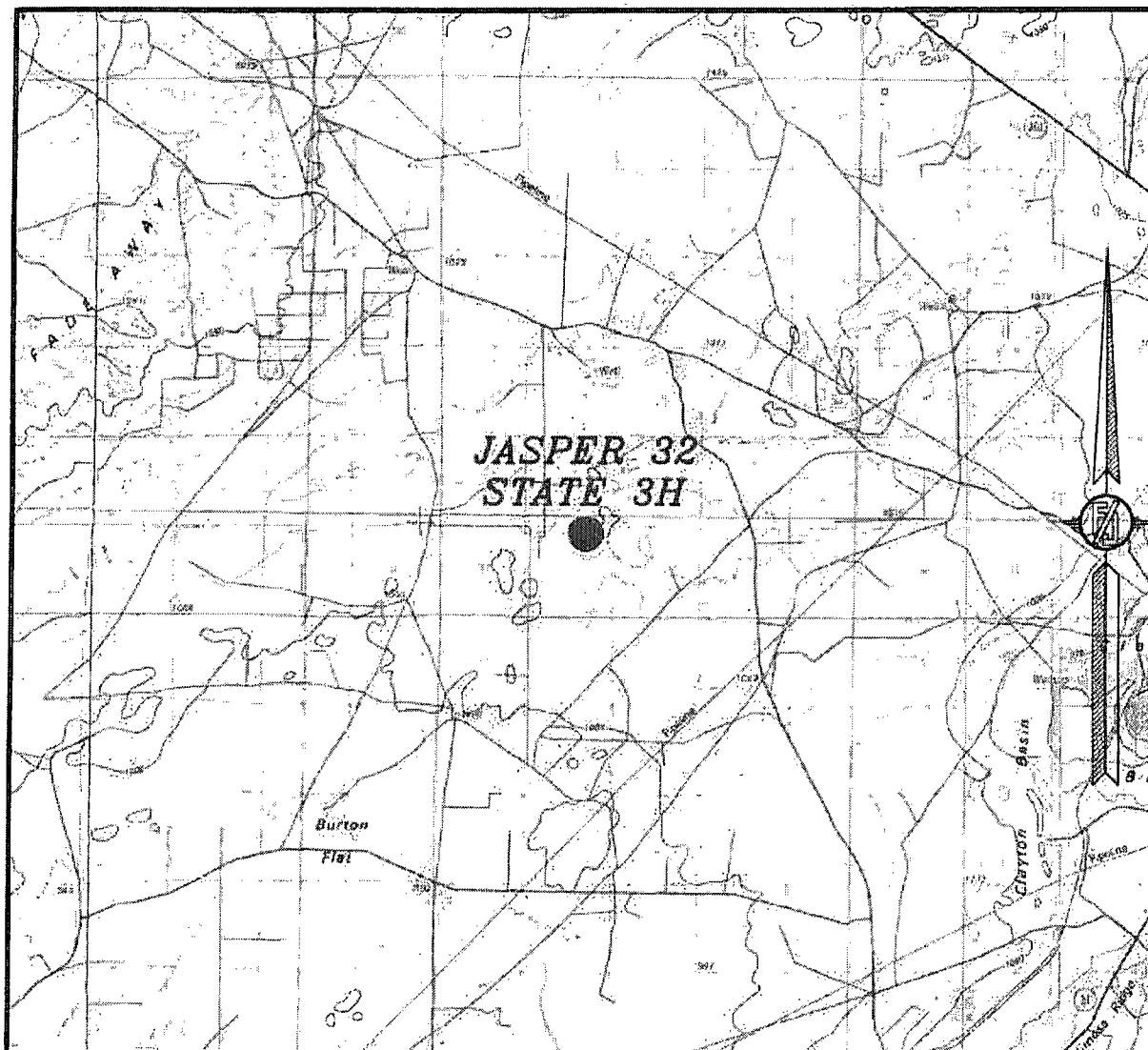
DEVON ENERGY PRODUCTION COMPANY, L.P.
JASPER 32 STATE 3H
 LOCATED 340 FT. FROM THE NORTH LINE
 AND 1700 FT. FROM THE EAST LINE OF
 SECTION 32, TOWNSHIP 19 SOUTH,
 RANGE 29 EAST, N.M.P.M.
 EDDY COUNTY, STATE OF NEW MEXICO

FEBRUARY 23, 2012

SURVEY NO. 806

MADRON SURVEYING, INC. 301 SOUTH CANAL CARLSBAD, NEW MEXICO
 (575) 234-3341

SECTION 32, TOWNSHIP 19 SOUTH, RANGE 29 EAST, N.M.P.M.
EDDY COUNTY, STATE OF NEW MEXICO
VICINITY MAP



NOT TO SCALE

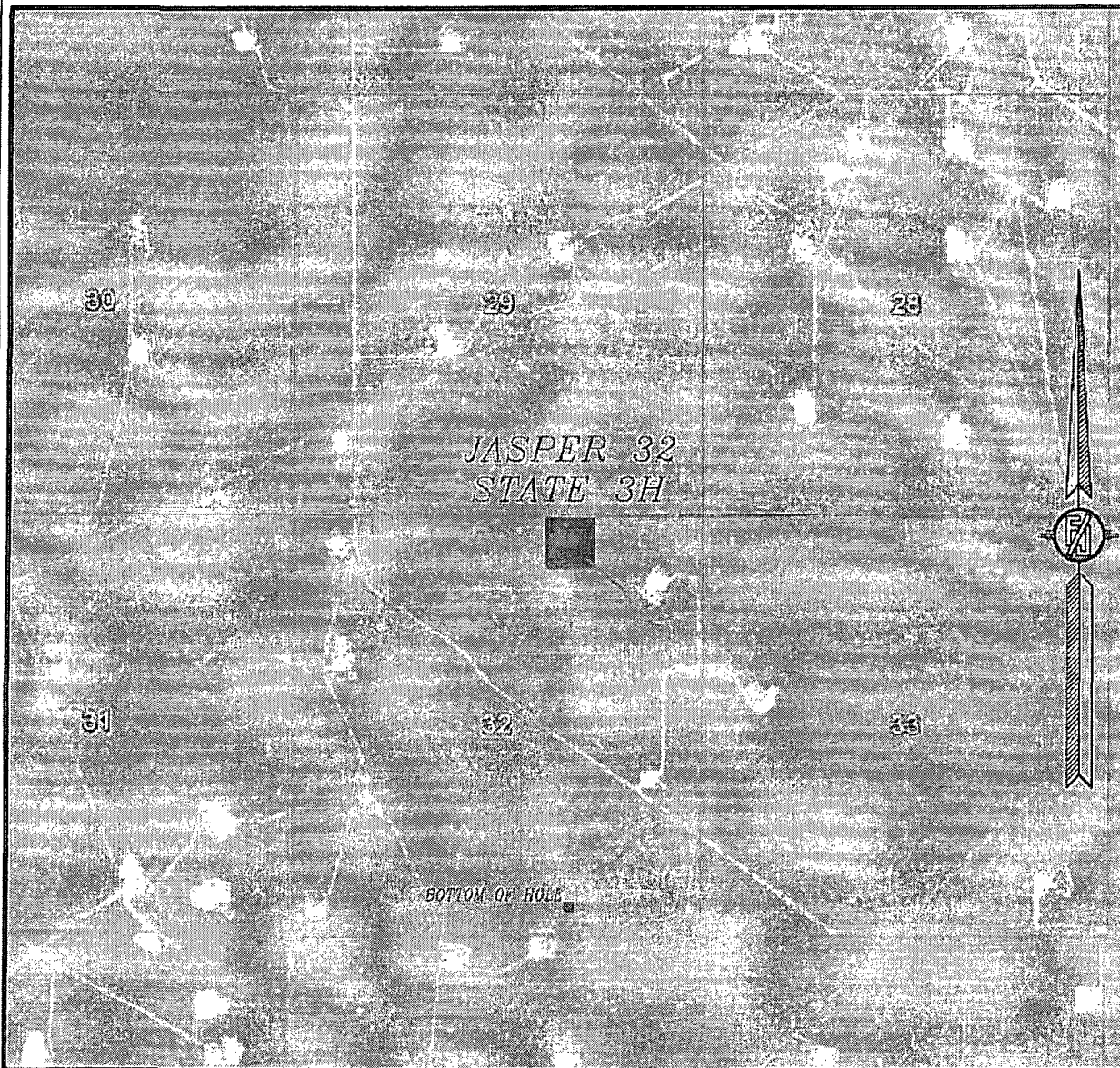
DEVON ENERGY PRODUCTION COMPANY, L.P.
JASPER 32 STATE 3H
LOCATED 340 FT. FROM THE NORTH LINE
AND 1700 FT. FROM THE EAST LINE OF
SECTION 32, TOWNSHIP 19 SOUTH,
RANGE 29 EAST, N.M.P.M.
EDDY COUNTY, STATE OF NEW MEXICO

FEBRUARY 23, 2012

SURVEY NO. 806

MADRON SURVEYING, INC. 301 SOUTH CANAL (575) 234-3341 CARLSBAD, NEW MEXICO

SECTION 32, TOWNSHIP 19 SOUTH, RANGE 29 EAST, N.M.P.M.
EDDY COUNTY, STATE OF NEW MEXICO
AERIAL PHOTO



NOT TO SCALE
AERIAL PHOTO:
GOOGLE EARTH
JUNE 2011

DEVON ENERGY PRODUCTION COMPANY, L.P.
JASPER 32 STATE 3H

LOCATED 340 FT. FROM THE NORTH LINE
AND 1700 FT. FROM THE EAST LINE OF
SECTION 32, TOWNSHIP 19 SOUTH,
RANGE 29 EAST, N.M.P.M.
EDDY COUNTY, STATE OF NEW MEXICO

FEBRUARY 23, 2012

SURVEY NO. 806

MADRON SURVEYING, INC. 301 SOUTH CANAL CARLSBAD, NEW MEXICO
(575) 238-3341