

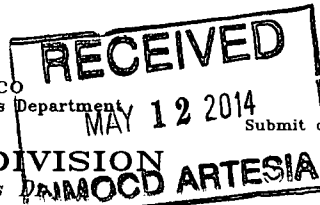
DISTRICT I
1625 N. French Dr., Hobbs, NM 88240

DISTRICT II
1301 W. Grand Avenue, Artesia, NM 88210

DISTRICT III
1000 Rio Brazos Rd., Aztec, NM 87410

DISTRICT IV
1220 S. St. Francis Dr., Santa Fe, NM 87505

State of New Mexico
Energy, Minerals and Natural Resources Department



Form C-102
Revised July 16, 2010
Submit one copy to appropriate
District Office

OIL CONSERVATION DIVISION
1220 South St. Francis
Santa Fe, New Mexico 87505

WELL LOCATION AND ACREAGE DEDICATION PLAT

☒ AMENDED REPORT

As Drilled

API Number 30-015-42081	Pool Code 51010	Pool Name WC-015 S262814C; Wolfcamp
Property Code 51010	Property Name DELAWARE RANCH "12" FEDERAL COM	Well Number 2H
OGRID No. 14744	Operator Name MEWBOURNE OIL COMPANY	Elevation 2947'

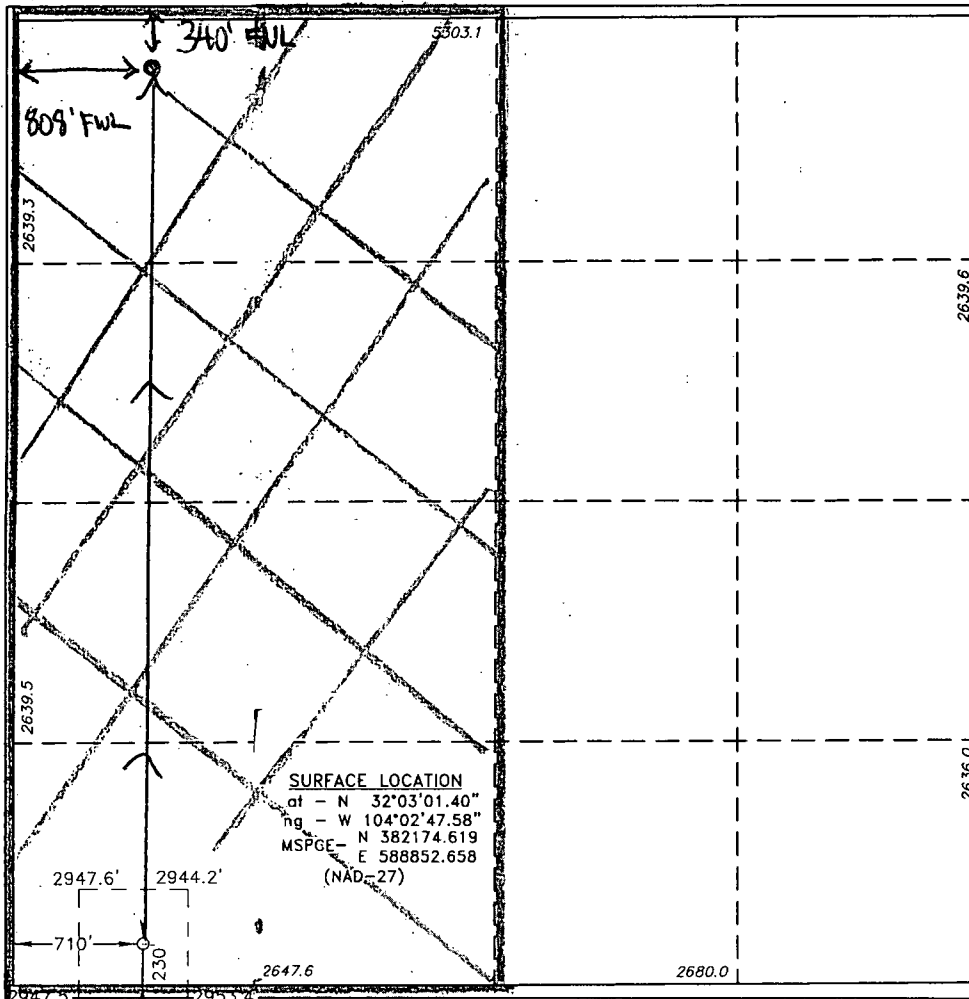
Surface Location

UL or lot No.	Section	Township	Range	Lot Idn	Feet from the	North/South line	Feet from the	East/West line	County
M	12	26 S	28 E		230	SOUTH	710	WEST	EDDY

Bottom Hole Location If Different From Surface

UL or lot No.	Section	Township	Range	Lot Idn	Feet from the	North/South line	Feet from the	East/West line	County
D	12	26 S	28 E		340'	North	809'	West	Eddy
Dedicated Acres 320	Joint or Infill	Consolidation Code	Order No.						

NO ALLOWABLE WILL BE ASSIGNED TO THIS COMPLETION UNTIL ALL INTERESTS HAVE BEEN CONSOLIDATED
OR A NON-STANDARD UNIT HAS BEEN APPROVED BY THE DIVISION



OPERATOR CERTIFICATION

I hereby certify that the information contained herein is true and complete to the best of my knowledge and belief, and that this organization either owns a working interest or unleased mineral interest in the land including the proposed bottom hole location or has a right to drill this well at this location pursuant to a contract with an owner of such a mineral or working interest, or to a voluntary pooling agreement or a compulsory pooling order heretofore entered by the division.

J. Lathan 5/9/14
Signature Date

Jackie Lathan
Printed Name

Email Address

SURVEYOR CERTIFICATION

I hereby certify that the well location shown on this plat was plotted from field notes of actual surveys made by me or under my supervision, and that the same is true and correct to the best of my belief.

SEPTEMBER 23 2014
Date Surveyed
Signature & Seal of
Professional Surveyor
W.O. Jones
25654

Certificate No. Gary L. Jones 7977

BASIN SURVEYS

25654