

District I  
1625 N. French Dr., Hobbs, NM 88240  
Phone: (575) 393-6161 Fax: (575) 393-0720  
District II  
811 S. First St., Artesia, NM 88210  
Phone: (575) 748-1283 Fax: (575) 748-9720  
District III  
1000 Rio Brazos Road, Aztec, NM 87410  
Phone: (505) 334-6178 Fax: (505) 334-6170  
District IV  
1220 S. St. Francis Dr., Santa Fe, NM 87505  
Phone: (505) 476-3460 Fax: (505) 476-3462

State of New Mexico  
Energy, Minerals & Natural Resources Department  
OIL CONSERVATION DIVISION  
1220 South St. Francis Dr.  
Santa Fe, NM 87505

NM OIL CONSERVATION  
ARTESIA DISTRICT

Form C-102  
Revised August 1, 2011  
Submit one copy to appropriate  
District Office

RECEIVED

☐ AMENDED REPORT

WELL LOCATION AND ACREAGE DEDICATION PLAT

<sup>1</sup> API Number 30-015-42207	<sup>2</sup> Pool Code 60660	<sup>3</sup> Pool Name Turkey Track Bone Spring
<sup>4</sup> Property Code 40468	<sup>5</sup> Property Name ZIRCON 12/7 GF FEDERAL COM	
<sup>7</sup> OGRID No. 14744	<sup>8</sup> Operator Name MEWBOURNE OIL COMPANY	<sup>6</sup> Well Number 1H
		<sup>9</sup> Elevation 3399'

<sup>10</sup> Surface Location

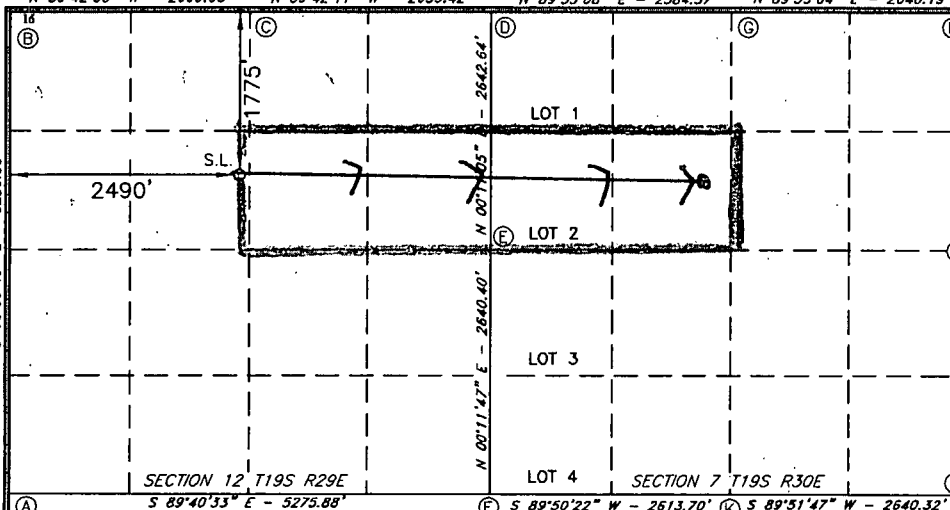
UL or lot no.	Section	Township	Range	Lot Idn	Feet from the	North/South line	Feet from the	East/West line	County
F	12	19-S	29-E		1775	NORTH	2490	WEST	EDDY

<sup>11</sup> Bottom Hole Location If Different From Surface

UL or lot no.	Section	Township	Range	Lot Idn	Feet from the	North/South line	Feet from the	East/West line	County
F	7	19S	30E		1932	North	2268	West	Eddy
<sup>12</sup> Dedicated Acres 158.68		<sup>13</sup> Joint or Infill		<sup>14</sup> Consolidation Code		<sup>15</sup> Order No.			

No allowable will be assigned to this completion until all interests have been consolidated or a non-standard unit has been approved by the division.

N 89°42'35" W - 2669.08' N 89°42'11" W - 2639.42' N 89°53'08" E - 2584.57' N 89°53'04" E - 2640.19'



<sup>17</sup> OPERATOR CERTIFICATION

I hereby certify that the information contained herein is true and complete to the best of my knowledge and belief, and that this organization either owns a working interest or unleased mineral interest in the land including the proposed bottom hole location or has a right to drill this well at this location pursuant to a contract with an owner of such a mineral or working interest, or to a voluntary pooling agreement or a compulsory pooling order heretofore entered by the division.

Signature: Jackie Lathan Date: 6/6/14

Printed Name: Jackie Lathan

E-mail Address:

<sup>18</sup> SURVEYOR CERTIFICATION

I hereby certify that the well location shown on this plat was plotted from field notes of actual surveys made by me or under my supervision, and that the same is true and correct to the best of my belief.

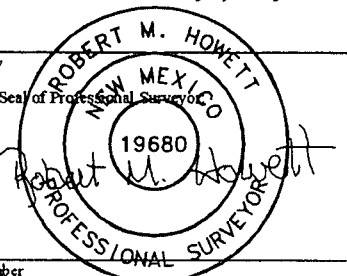
6/12/13

Date of Survey

Signature and Seal of Professional Surveyor

19680

Certificate Number



GEODETIC DATA  
NAD 27 GRID - NM EAST

SURFACE LOCATION

N 610247.0  
E 593846.0

LAT: 32.677297' N  
LONG: 104.028336' W

CORNER DATA  
NAD 27 GRID - NM EAST

A: 1" IP STONE  
N 606754.9 - E 591366.7

B: 1/2" REBAR  
N 612034.0 - E 591351.6

C: 1/2" REBAR  
N 612020.5 - E 594020.0

D: FND BC "1916"  
N 612006.8 - E 596658.8

E: FND BC  
N 609364.8 - E 596650.2

F: FND BC "1916"  
N 606725.1 - E 596641.2

CORNER DATA  
NAD 27 GRID - NM EAST

G: FND BC "1916"  
N 612012.0 - E 599242.7

H: FND BC "1916"  
N 612017.3 - E 601882.2

I: FND BC "1916"  
N 606738.7 - E 601893.9

K: FND BC "1916"  
N 606732.4 - E 599254.3