

UNITED STATES
DEPARTMENT OF THE INTERIOR
BUREAU OF LAND MANAGEMENT

NM OIL CONSERVATION
OCD Artesia
ARTESIA DISTRICT

FORM APPROVED
OMB NO. 1004-0137
Expires October 31, 2014

JUL 14 2014

RECEIVED

5. Lease Serial No.
NMLC064756

6. If Indian, Allottee or Tribe Name

7. Unit or CA Agreement Name and No.

8. Lease Name and Well No.

Ramblin Rose 23 Fed 4H <313491>

9. API Well No.

30-015- 42510

10. Field and Pool, or Exploratory

Jennings; Bone Spring, West <9780>

11. Sec., T., R., M., or Blk. and Survey or Area

Sec 23, T26S, R31E

APPLICATION FOR PERMIT TO DRILL OR REENTER

1a. Type of Work ☒ DRILL ☐ REENTER

1b. Type of Well ☒ Oil Well ☐ Gas Well ☐ Other ☒ Single Zone ☐ Multiple Zone

2. Name of Operator

EOG Resources, Inc.

3a. Address

P.O. Box 2267 Midland, TX 79702

3b. Phone No. (include area code)

432-686-3689

4. Location of Well (Report location clearly and in accordance with any State requirements)*

At surface 450 FNL & 915 FWL, NWNW (D), Sec 23 T26S R31E

At proposed prod. zone 230 FNL & 880 FWL, NWNW (D), Sec 14 T26S R31E

14. Distance in miles and direction from nearest town or post office*

Approximately +/- 33 miles Southwest from Jal, NM

12. County or Parish

Eddy

13. State

NM

15. Distance from proposed*

location to nearest
property or lease line, ft. 450' OL, 50' PP
(Also to nearest drg. unit line, if any)

16. No. of Acres in lease

2560

17. Spacing Unit dedicated to this well

160 ac

18. Distance from proposed location*
to nearest well, drilling, completed,
applied for, on this lease, ft.

30' from 5H

19. Proposed Depth

13750 MD - 8400 TVD

20. BLM/BIA Bond No. on file

NM 2308

21. Elevations (Show whether DF, KDB, RT, GL, etc.)

3201' GL

22. Approximate date work will start*

12/01/14

23. Estimated duration

20 days

24. Attachments

The following, completed in accordance with the requirements of Onshore Oil and Gas Order No. 1, must be attached to this form:

1. Well plat certified by a registered surveyor.
2. A Drilling Plan.
3. A Surface Use Plan (if the location is on National Forest System Lands, the SUPO must be filed with the appropriate Forest Service Office).
4. Bond to cover the operations unless covered by an existing bond on file (see Item 20 above).
5. Operator certification.
6. Such other site specific information and/or plans as may be required by the BLM

25. Signature

Name (Printed/Typed)

Date

Stan Wagner

2/26/14

Title

Regulatory Analyst

Approved by (Signature)

Steve Caffey

Name (Printed/Typed)

Date JUL 11 2014

Title

FIELD MANAGER

Office

CARLSBAD FIELD OFFICE

Application approval does not warrant or certify that the applicant holds legal or equitable title to those rights in the subject lease which would entitle the applicant to conduct operations thereon.

Conditions of approval, if any, are attached.

APPROVAL FOR TWO YEARS

Title 18 U.S.C. Section 1001 and Title 43 U.S.C. Section 1212, make it a crime for any person knowingly and willfully to make to any department or agency of the United States any false, fictitious or fraudulent statements or representations as to any matter within its jurisdiction.

(Continued on page 2)

BH Loc is Non-Standard
Carlsbad Controlled Water Basin

*(Instructions on page 2)

SEE ATTACHED FOR
CONDITIONS OF APPROVAL

Approval Subject to General Requirements
& Special Stipulations Attached

OPERATOR CERTIFICATION

I certify that I, or someone under my direct supervision, have inspected the drill site and access route proposed herein; that I am familiar with the conditions that presently exist; that I have full knowledge of State and Federal Laws applicable to this operation; that the statements made in this APD package are, to the best of my knowledge, true, and correct; and that the work associated with the operations proposed herein will be performed in conformity with this APD package and the terms and conditions under which it is approved. I also certify that I, or the company I represent, am responsible for the operations conducted under this application. These statements are subject to the provisions of 18 U.S.C. 1001 for the filing of false statements. Executed this 24 day of February, 2014.

Name: Roger Motley

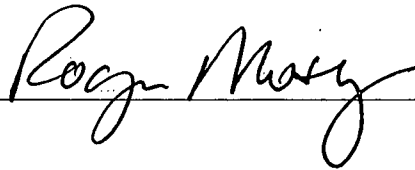
Position: Land Specialist

Address: P.O. Box 2267, Midland, TX 79705

Telephone: (432) 686-3642

Email: roger_motley@eogresources.com

Signed _____



District I
1625 N. French Dr., Hobbs, NM 88240
Phone: (575) 393-6161 Fax: (575) 393-0720
District II
811 S. First St., Artesia, NM 88210
Phone: (575) 748-1283 Fax: (575) 748-9720
District III
1000 Rio Brazos Road, Aztec, NM 87410
Phone: (505) 334-6178 Fax: (505) 334-6170
District IV
1220 S. St. Francis Dr., Santa Fe, NM 87505
Phone: (505) 476-3460 Fax: (505) 476-3462

State of New Mexico
Energy, Minerals & Natural Resources
Department
OIL CONSERVATION DIVISION
1220 South St. Francis Dr.
Santa Fe, NM 87505

FORM C-102

Revised August 1, 2011

Submit one copy to appropriate

District Office

☐ AMENDED REPORT

WELL LOCATION AND ACREAGE DEDICATION PLAT

¹ API Number 30-015- 42510	² Pool Code 97860	³ Pool Name Jennings; Bone Spring, West
⁴ Property Code < 313491 >	⁵ Property Name RAMBLIN ROSE 23 FED	⁶ Well Number #4H
⁷ OGRID No. 7377	⁸ Operator Name EOG RESOURCES, INC.	⁹ Elevation 3201'

¹⁰Surface Location

UL or lot no.	Section	Township	Range	Lot Idn	Feet from the	North/South line	Feet from the	East/West line	County
D	23	26-S	31-E	-	450'	NORTH	915'	WEST	EDDY

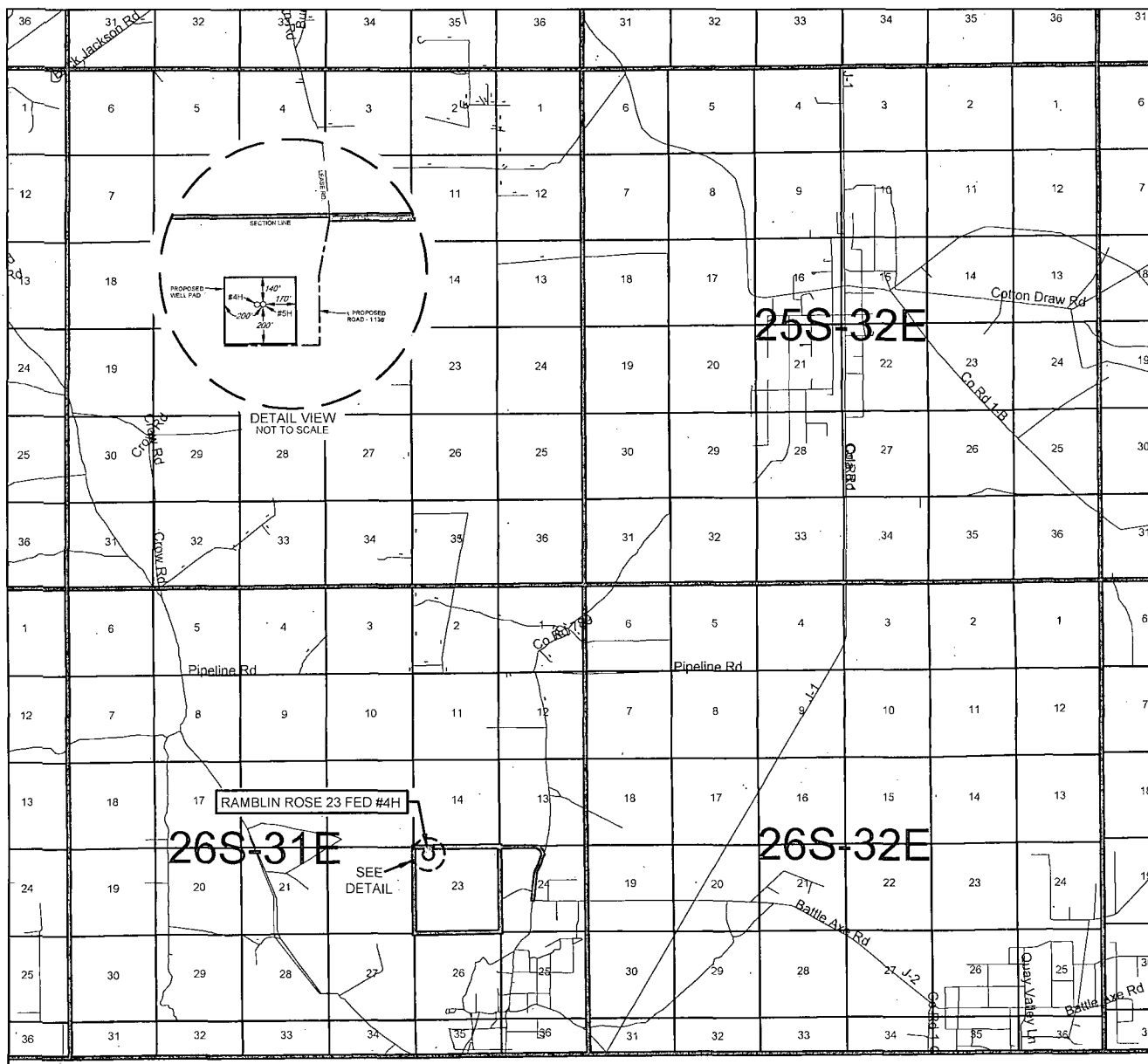
UL or lot no.	Section	Township	Range	Lot Idn	Feet from the	North/South line	Feet from the	East/West line	County
D	14	26-S	31-E	-	230'	NORTH	880'	WEST	EDDY

¹² Dedicated Acres 160	¹³ Joint or Infill	¹⁴ Consolidation Code	¹⁵ Order No.
--------------------------------------	-------------------------------	----------------------------------	-------------------------

No allowable will be assigned to this completion until all interests have been consolidated or a non-standard unit has been approved by the division.

					14	13
<p>17 OPERATOR CERTIFICATION I hereby certify that the information contained herein is true and complete to the best of my knowledge and belief, and that this organization either owns a working interest or undivided mineral interest in the land including the proposed bottom hole location or has a right to drill this well at this location pursuant to a contract with an owner of such a mineral or working interest, or to a voluntary pooling agreement or a compulsory pooling order heretofore entered by the division.</p> <p><i>Stan Wagner</i> 2/26/14 Signature Date</p> <p>Stan Wagner Printed Name</p> <p>E-mail Address</p>						
<p>18 SURVEYOR CERTIFICATION I hereby certify that the well location shown on this plat was plotted from field notes of actual surveys made by me or under my supervision, and that the same is true to the best of my belief.</p> <p>10/28/2013 Date of Survey Signature and Seal of Professional Surveyor</p> <p><i>Michael Brown</i> Professional Surveyor 18329</p>						
<p>19 SURFACE LOCATION NEW MEXICO EAST NAD 1927 X=679517 Y=376624 LAT.: N 32.0341306 LONG.: W 103.7540265</p>					14	24

EXHIBIT 2 VICINITY MAP



LEASE NAME & WELL NO.: RAMBLIN ROSE 23 FED #4H

SECTION 23 TWP 26-S RGE 31-E SURVEY N.M.P.M.

COUNTY EDDY STATE NM

DESCRIPTION 450' FNL & 915' FWL

DISTANCE & DIRECTION FROM INT. OF NM-18 N & NM-128, GO WEST
ON NM-128 W ±30.0 MILES, THENCE SOUTH (LEFT) ON CR. 1/J-1/ORLA RD.
±13.6 MILES, THENCE WEST (RIGHT) ON BATTLE AXE RD./J-2 ±1.9 MILES,
THENCE NORTH (RIGHT) ON LEASE RD. ±0.6 MILES, THENCE NORTHWEST
(LEFT) ON LEASE RD. ±1.3 MILES, THENCE SOUTH (LEFT) ON PROPOSED
RD. ±1136 FEET TO A POINT SOUTH OF THE LOCATION.

THIS EASEMENT/SERVITUDE LOCATION SHOWN HEREON HAS BEEN SURVEYED ON THE GROUND UNDER MY SUPERVISION AND PREPARED ACCORDING TO THE EVIDENCE FOUND AT THE TIME OF SURVEY, AND DATA PROVIDED BY EOG RESOURCES, INC. THIS CERTIFICATION IS MADE AND LIMITED TO THOSE PERSONS OR ENTITIES SHOWN ON THE FACE OF THIS PLAT AND IS NON-TRANSFERABLE. THIS SURVEY IS CERTIFIED FOR THIS TRANSACTION ONLY.

ALL BEARINGS, DISTANCES, AND COORDINATE VALUES CONTAINED HEREON ARE GRID BASED UPON THE NEW MEXICO STATE PLANE COORDINATE SYSTEM, EAST ZONE OF THE NORTH AMERICAN DATUM 1927, U.S. SURVEY FEET.



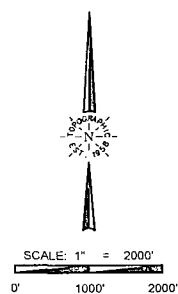
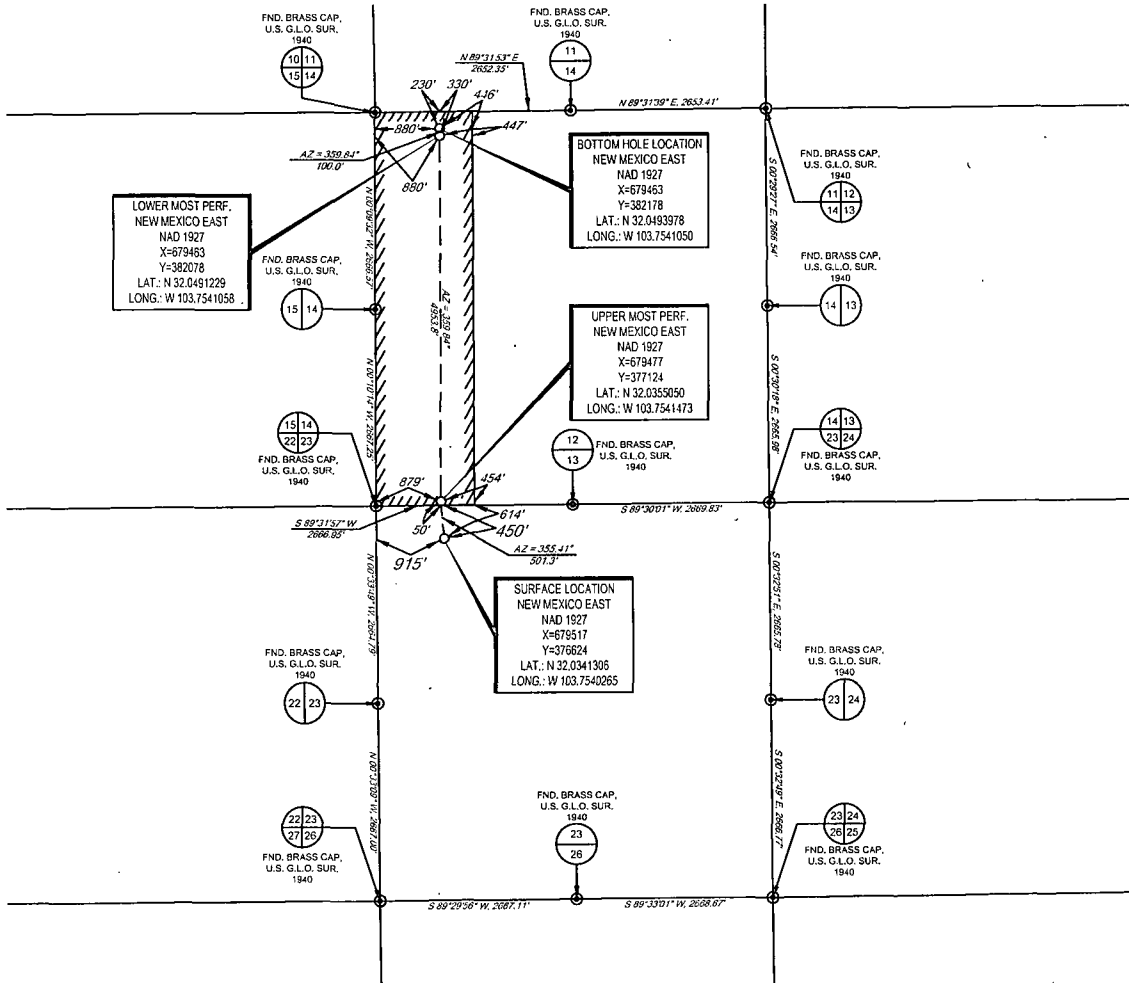
TOPOGRAPHIC
 LOYALTY INNOVATION LEGACY

1400 EVERMAN PARKWAY, Ste. 197 • FT. WORTH, TEXAS 76140
 TELEPHONE: (817) 744-7512 • FAX (817) 744-7548
 2903 NORTH BIG SPRING • MIDLAND, TEXAS 79705
 TELEPHONE: (432) 682-1653 OR (800) 767-1653 • FAX (432) 682-1743
 WWW.TOPOGRAPHIC.COM



EXHIBIT 2A

SECTION 23, TOWNSHIP 26 SOUTH, RANGE 31 EAST, N.M.P.M.
EDDY COUNTY, NEW MEXICO



LEASE NAME & WELL NO.: RAMBLIN ROSE 23 FED #4H

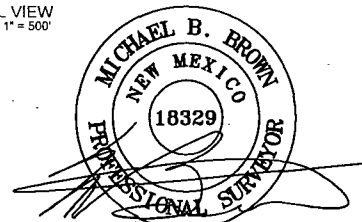
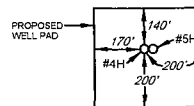
SECTION 23 TWP 26-S RGE 31-E SURVEY N.M.P.M.
COUNTY EDDY STATE NM
DESCRIPTION 450' FNL & 915' FWL

DISTANCE & DIRECTION FROM INT. OF NM-18 N & NM-128, GO WEST
ON NM-128 W ±30.0 MILES, THENCE SOUTH (LEFT) ON CR. 1/J-1/ORLA RD.
±13.6 MILES, THENCE WEST (RIGHT) ON BATTLE AXE RD./J-2 ±1.9 MILES,
THENCE NORTH (RIGHT) ON LEASE RD. ±0.6 MILES, THENCE NORTHWEST
(LEFT) ON LEASE RD. ±1.3 MILES, THENCE SOUTH (LEFT) ON PROPOSED
RD. ±1136 FEET TO A POINT SOUTH OF THE LOCATION.

ALL BEARINGS, DISTANCES, AND COORDINATE VALUES CONTAINED HEREON ARE GRID
BASED UPON THE NEW MEXICO STATE PLANE COORDINATE SYSTEM, EAST ZONE OF THE
NORTH AMERICAN DATUM 1927, U.S. SURVEY FEET

THIS EASEMENT/SERVITUDE LOCATION SHOWN HEREON HAS BEEN SURVEYED ON THE GROUND
UNDER MY SUPERVISION AND PREPARED ACCORDING TO THE EVIDENCE FOUND AT THE TIME OF
SURVEY, AND DATA PROVIDED BY EOG RESOURCES, INC. THIS CERTIFICATION IS MADE AND LIMITED
TO THOSE PERSONS OR ENTITIES SHOWN ON THE FACE OF THIS PLAT AND IS NON-TRANSFERABLE.
THIS SURVEY IS CERTIFIED FOR THIS TRANSACTION ONLY.

DETAIL VIEW
SCALE: 1" = 500'



Michael Blake Brown, P.S. No. 18329
NOVEMBER 5, 2013



TOPOGRAPHIC
LOYALTY INNOVATION LEGACY

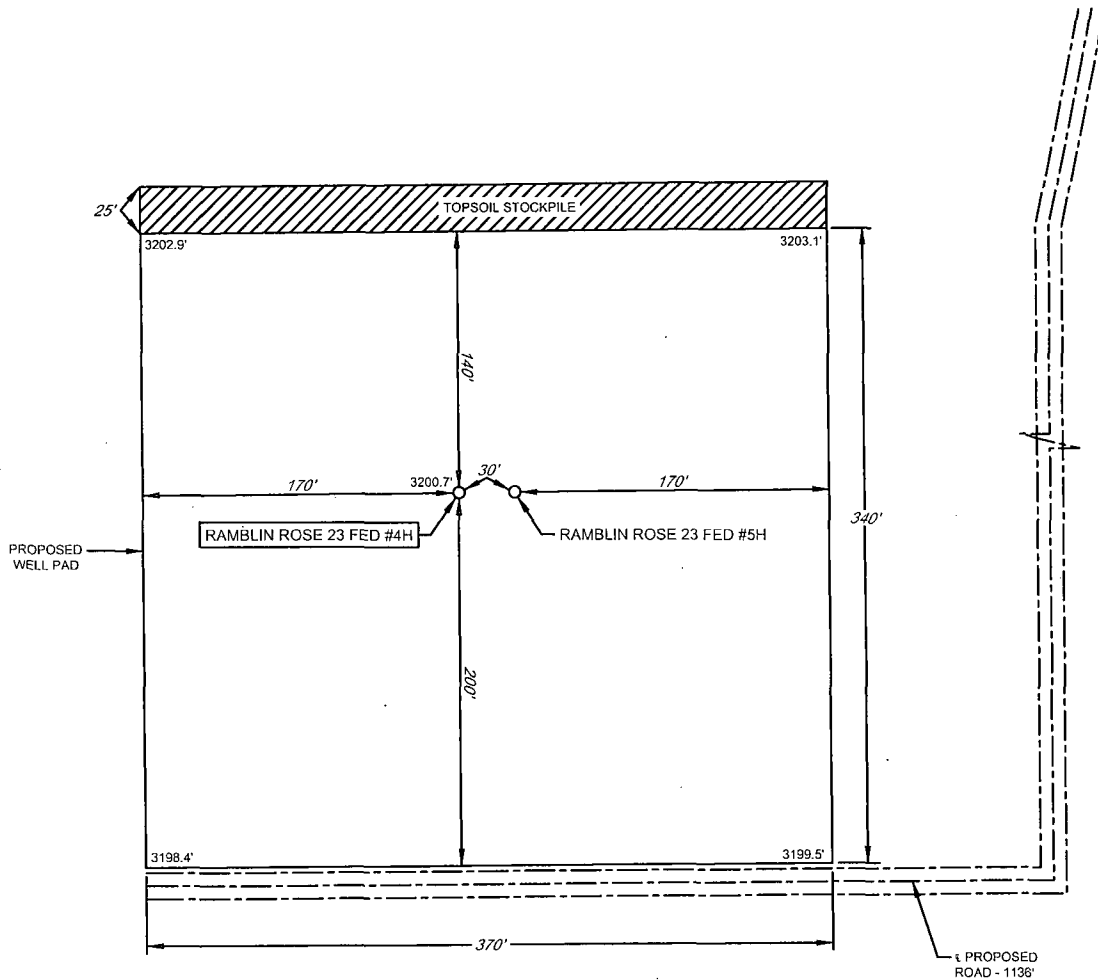
1400 EVERMAN PARKWAY, Ste. 197 • FT. WORTH, TEXAS 76140
TELEPHONE: (817) 744-7512 • FAX (817) 744-7548
2903 NORTH BIG SPRING • MIDLAND, TEXAS 79705
TELEPHONE: (432) 682-1653 OR (800) 767-1653 • FAX (432) 682-1743
WWW.TOPOGRAPHIC.COM



EXHIBIT 2B

SECTION 23, TOWNSHIP 26 SOUTH, RANGE 31 EAST, N.M.P.M.
EDDY COUNTY, NEW MEXICO

DETAIL VIEW
SCALE: 1" = 100'



LEASE NAME & WELL NO.: RAMBLIN ROSE 23 FED #4H
#4H LATITUDE N 32.0341306 #4H LONGITUDE W 103.7540265

LEGEND

== == == == == EXISTING ROAD
--- SECTION LINE
--- || --- EXISTING PIPELINE



SCALE: 1" = 100'
0' 50' 100'

ALL BEARINGS, DISTANCES, AND COORDINATE VALUES CONTAINED HEREON ARE GRID
BASED UPON THE NEW MEXICO STATE PLANE COORDINATE SYSTEM, EAST ZONE OF THE
NORTH AMERICAN DATUM 1927, U.S. SURVEY FEET

THIS PROPOSED PAD SITE LOCATION SHOWN HEREON HAS BEEN SURVEYED ON THE GROUND UNDER
MY SUPERVISION AND PREPARED ACCORDING TO THE EVIDENCE FOUND AT THE TIME OF SURVEY,
AND DATA PROVIDED BY EOG RESOURCES, INC. THIS CERTIFICATION IS MADE AND LIMITED TO THOSE
PERSONS OR ENTITIES SHOWN ON THE FACE OF THIS PLAT AND IS NON-TRANSFERABLE. THIS
SURVEY IS CERTIFIED FOR THIS TRANSACTION ONLY.



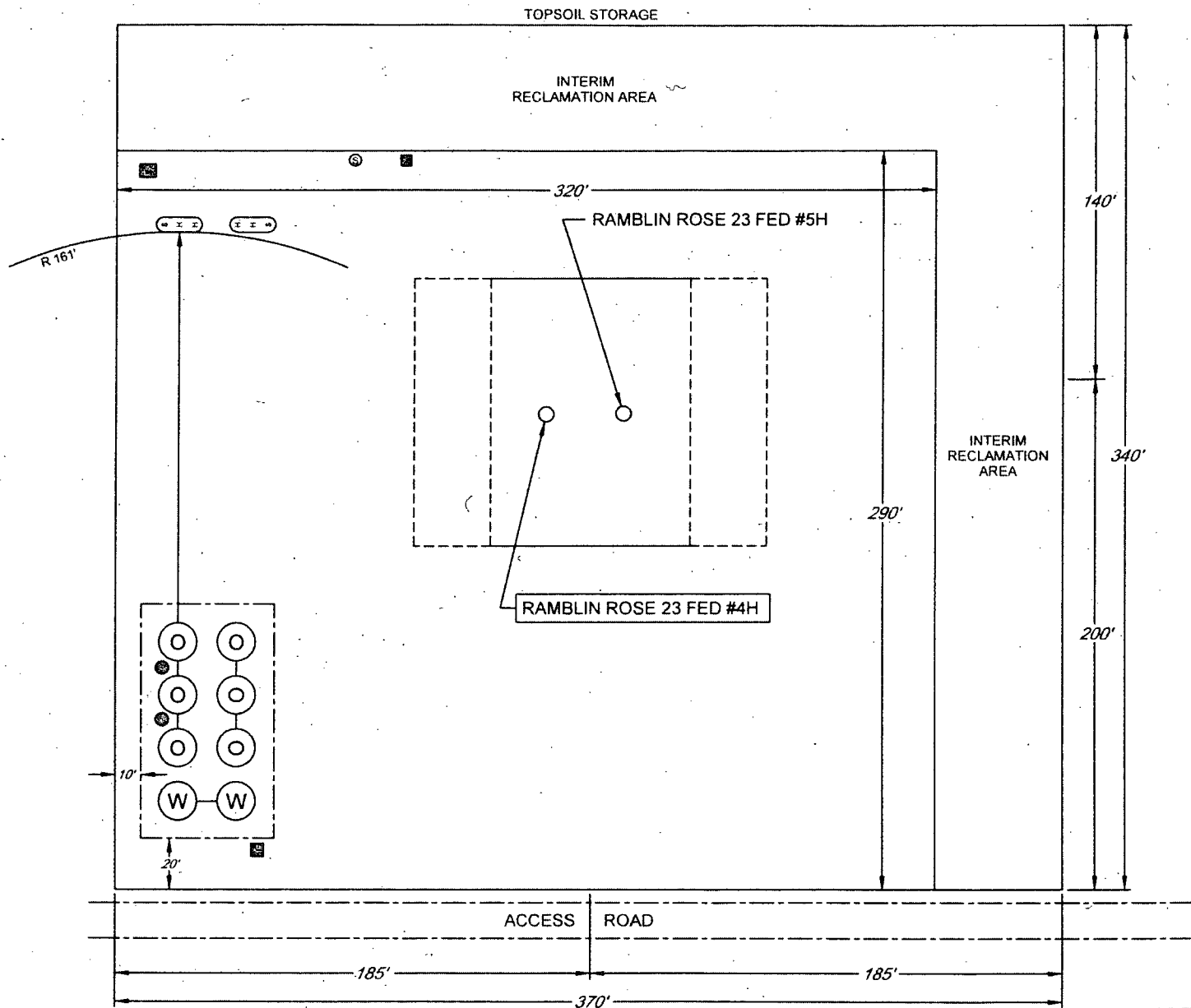
TOPOGRAPHIC
'LOYALTY' 'INNOVATION' 'LEGACY'

1400 EVERMAN PARKWAY, Ste. 197 • FT. WORTH, TEXAS 76140
TELEPHONE: (817) 744-7512 • FAX (817) 744-7548
2903 NORTH BIG SPRING • MIDLAND, TEXAS 79705
TELEPHONE: (432) 682-1653 OR (800) 767-1653 • FAX (432) 682-1743
WWW.TOPOGRAPHIC.COM

ORIGINAL DOCUMENT SIZE: 8.5" X 11"

EXHIBIT 2C RECLAMATION AND FACILITY DIAGRAM - PRODUCTION FACILITIES DIAGRAM

SECTION 23, TOWNSHIP 26 SOUTH, RANGE 31 EAST, N.M.P.M.
EDDY COUNTY, NEW MEXICO
DETAIL VIEW
SCALE: 1"=80'



LEASE NAME & WELL NO.: RAMBLIN ROSE 23 FED #4H
#4H LATITUDE N 32.0341306 #4H LONGITUDE W 103.7540265

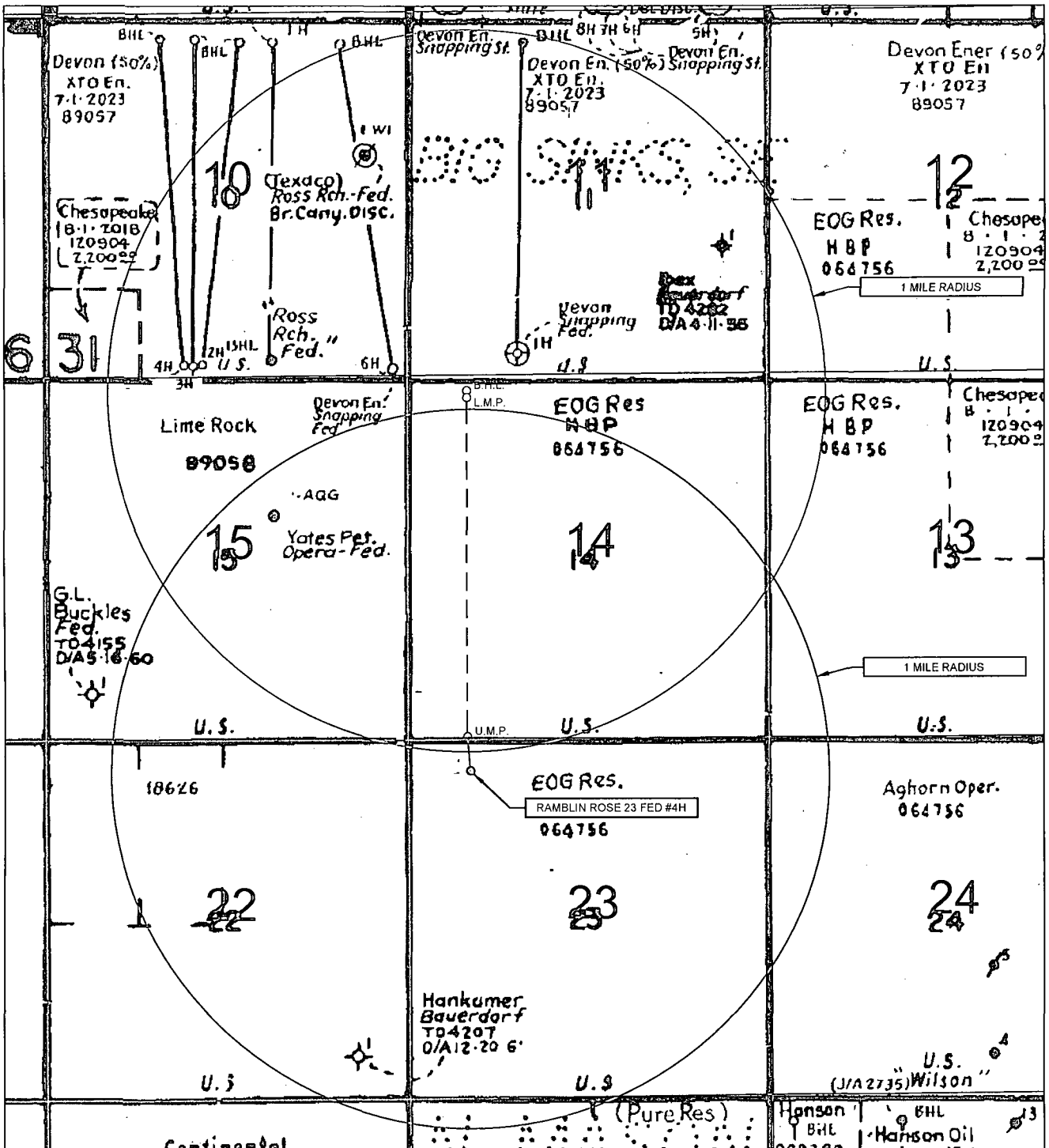
	500 BBL OIL TANK		FLARE SEPARATOR
	500 BBL WATER TANK		VRU
	36 x 15 HEATER/SEPARATOR		48 x 25 VRT
			FP FLARE
			OP FLARE

EXHIBIT 3



EOG resources, Inc.

SECTION 23, TOWNSHIP 26 SOUTH, RANGE 31 EAST, N.M.P.M.
EDDY COUNTY, NEW MEXICO



LEASE NAME & WELL NO.:

RAMBLIN ROSE 23 FED #4H

SCALE: NTS

#4H LATITUDE N 32.0341306

#4H LONGITUDE W 103.7540265

LEGEND

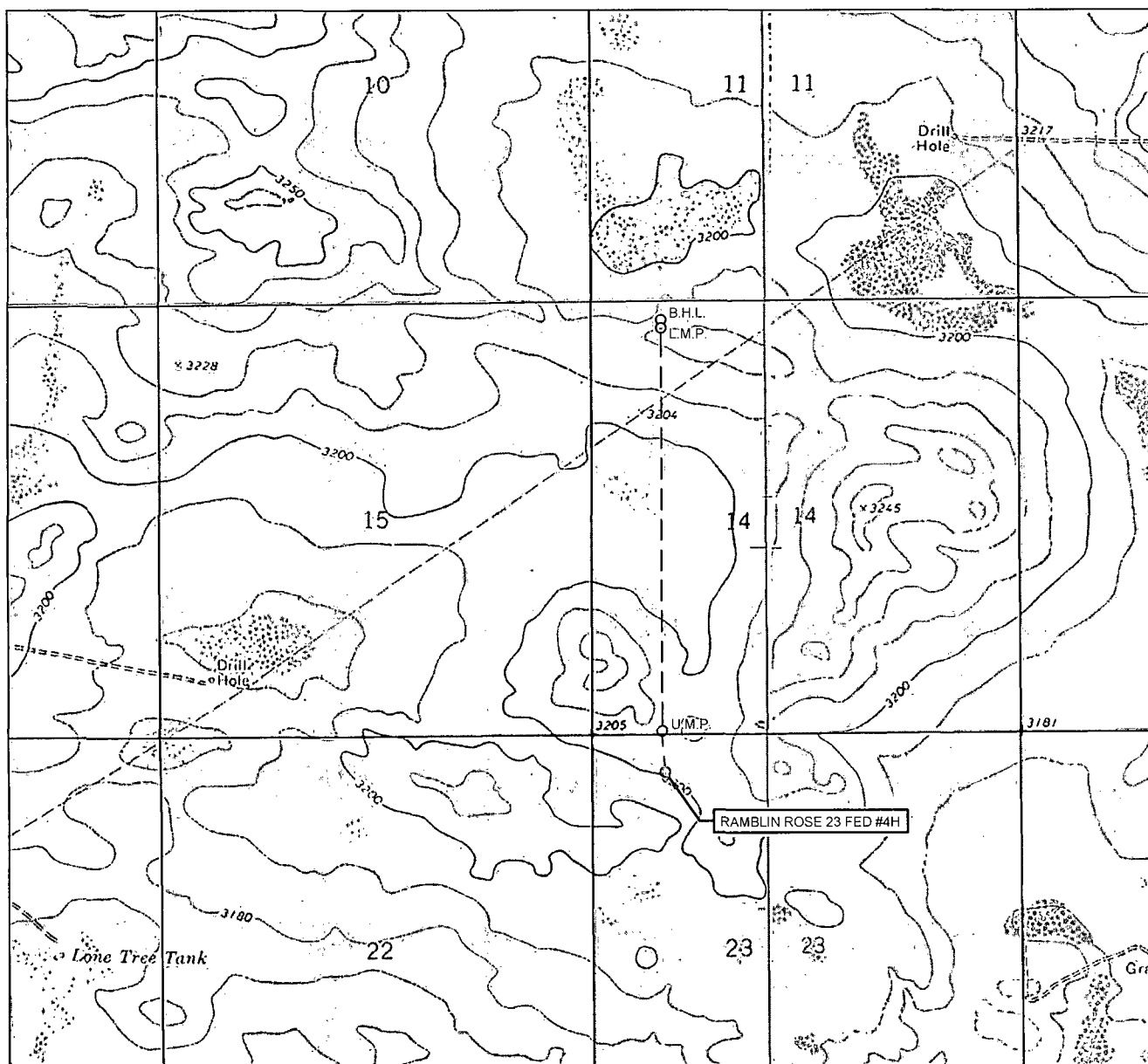
ALL BEARINGS, DISTANCES, AND COORDINATE VALUES CONTAINED HEREON ARE GRID
BASED UPON THE NEW MEXICO STATE PLANE COORDINATE SYSTEM, EAST ZONE OF THE
NORTH AMERICAN DATUM 1927, U.S. SURVEY FEET

THIS EASEMENT/SERVITUDE LOCATION SHOWN HEREON HAS BEEN SURVEYED ON THE GROUND
UNDER MY SUPERVISION AND PREPARED ACCORDING TO THE EVIDENCE FOUND AT THE TIME OF
SURVEY, AND DATA PROVIDED BY EOG RESOURCES, INC. THIS CERTIFICATION IS MADE AND LIMITED
TO THOSE PERSONS OR ENTITIES SHOWN ON THE FACE OF THIS PLAT AND IS NON-TRANSFERABLE.
THIS SURVEY IS CERTIFIED FOR THIS TRANSACTION ONLY.

— — — — — EXISTING ROAD
— — — — — SECTION LINE
— — — — — EXISTING PIPELINE
— — — — — OVERHEAD ELECTRIC
— — — — — FENCE LINE

1400 EVERMAN PARKWAY, Ste. 197 • FT. WORTH, TEXAS 76140
TELEPHONE: (817) 744-7512 • FAX: (817) 744-7548
2903 NORTH BIG SPRING • MIDLAND, TEXAS 79705
TELEPHONE: (432) 682-1653 OR (800) 767-1653 • FAX: (432) 682-1743
WWW.TOPOGRAPHIC.COM

LOCATION & ELEVATION VERIFICATION MAP



LEASE NAME & WELL NO.: RAMBLIN ROSE 23 FED #4H

SECTION 23 TWP 26-S RGE 31-E SURVEY N.M.P.M.
 COUNTY EDDY STATE NM ELEVATION 3201'
 DESCRIPTION 450' FNL & 915' FWL

LATITUDE N 32.0341306 LONGITUDE W 103.7540265



SCALE: 1" = 2000'
 0' 1000' 2000'

THIS EASEMENT/SERVITUDE LOCATION SHOWN HEREON HAS BEEN SURVEYED ON THE GROUND UNDER MY SUPERVISION AND PREPARED ACCORDING TO THE EVIDENCE FOUND AT THE TIME OF SURVEY, AND DATA PROVIDED BY EOG RESOURCES, INC. THIS CERTIFICATION IS MADE AND LIMITED TO THOSE PERSONS OR ENTITIES SHOWN ON THE FACE OF THIS PLAT AND IS NON-TRANSFERABLE. THIS SURVEY IS CERTIFIED FOR THIS TRANSACTION ONLY.

ALL BEARINGS, DISTANCES, AND COORDINATE VALUES CONTAINED HEREON ARE GRID BASED UPON THE NEW MEXICO STATE PLANE COORDINATE SYSTEM, EAST ZONE OF THE NORTH AMERICAN DATUM 1927, U.S. SURVEY FEET.



TOPOGRAPHIC
 'LOYALTY INNOVATION LEGACY'

1400 EVERMAN PARKWAY, Ste. 197 • FT. WORTH, TEXAS 76140
 TELEPHONE: (817) 744-7512 • FAX (817) 744-7548
 2903 NORTH BIG SPRING • MIDLAND, TEXAS 79705
 TELEPHONE: (432) 682-1653 OR (800) 767-1653 • FAX (432) 682-1743
 WWW.TOPOGRAPHIC.COM

EOG RESOURCES, INC.
RAMBLIN ROSE 23 FED NO. 4H

1. GEOLOGIC NAME OF SURFACE FORMATION:

Permian

2. ESTIMATED TOPS OF IMPORTANT GEOLOGICAL MARKERS:

Rustler		1,260'
Top of Salt		1,600'
Base of Salt	<i>Anhydrite TOP -</i>	3,900'
Base Anhydrite	<i>R. Marking</i>	4,100'
Lamar	<i>operator</i>	4,115'
Bell Canyon	<i>MDL</i>	4,143'
Cherry Canyon	<i>2/20/14</i>	5,075'
Brushy Canyon		6,370'
Bone Spring Lime		8,115'
TD		8,400'

3. ESTIMATED DEPTHS OF ANTICIPATED FRESH WATER, OIL OR GAS:

Upper Permian Sands	0- 400'	Fresh Water
Brushy Canyon	6,370'	Oil
Bone Spring Lime	8,115'	Oil

No other Formations are expected to give up oil, gas or fresh water in measurable quantities. Surface fresh water sands will be protected by setting 13.375" casing at 1285' and circulating cement back to surface.

4. CASING PROGRAM - NEW

Hole Size	Interval	Csg OD	Weight	Grade	Conn	DF _{min} Collapse	DF _{min} Burst	DF _{min} Tension
17.5"	0 - 1285'	13.375"	54.5#	J55	STC	1.125	1.25	1.60
12.25"	0-4000'	9.625"	40#	J55	LTC	1.125	1.25	1.60
8.75"	0'-13,750'	5.500"	17#	P110 or HCP110	LTC	1.125	1.25	1.60

**EOG RESOURCES, INC.
RAMBLIN ROSE 23 FED NO. 4H**

Cementing Program:

Depth	No. Sacks	Wt. lb/gal	Yld Ft ³ /ft	Mix Water Gal/sk	Slurry Description
13-3/8" 1285'	400	13.5	1.73	9.13	Lead: Class C + 4.0% Bentonite + 0.6% CD-32 + 0.5% CaCl ₂ + 0.25 lb/sk Cello-Flake (TOC @ surface)
	300	14.8	1.34	6.34	Tail: Class C + 0.005 pps Static Free + 2% CaCl ₂ + 0.25 pps CelloFlake + 0.005 gps FP-6L
9-5/8" 4,000'	600	12.7	2.22	12.38	Lead: Class 'C' + 1.50% R-3 + 0.25 lb/sk Cello-Flake + 2.0% Sodium Metasilicate + 10% Salt + 0.005 lb/sk Static Free (TOC @ surface)
	200	14.8	1.32	6.26	Tail: Class 'C' + 0.25 lb/sk Cello Flake + 0.005 lb/sk Static Free
5-1/2" 13,750'	375	10.8	3.67	21.4	Lead: 60:40:0 Class 'C' + 15.00 lb/sk BA-90 + 4.00% MPA-5 + 3.00% SMS + 5.00% A-10 + 1.00% BA-10A + 0.80% ASA-301 + 2.90% R-21 + 8.00 lb/sk LCM-1 + 0.005 lb/sk Static Free (TOC @ 3500')
	400	11.8	2.38	13.25	Middle: 50:50:10 Class 'H' + 0.80% FL-52 + 0.45% ASA-301 + 0.40% SMS + 2.00% Salt + 3.00 lb/sx LCM-1 + 0.20% R-21 + 0.25 lb/sk Cello Flake + 0.005 lb/sk Static Free
	1400	14.2	1.28	5.75	Tail: 50:50:2 Class 'H' + 0.65% FL-52 + 0.20% CD-32 + 0.15% SMS + 2.00% Salt + 0.10% R-3 + 0.005 lb/sk Static Free

Note: Cement volumes based on bit size plus at least 25% excess in the open hole plus 10% excess in the cased-hole overlap section.

5. MINIMUM SPECIFICATIONS FOR PRESSURE CONTROL:

Variance is requested to use a co-flex line between the BOP and choke manifold (instead of using a 4" OD steel line).

The minimum blowout preventer equipment (BOPE) shown in Exhibit #1 will consist of a double ram-type (10,000 psi WP) preventer and an annular preventer (5000-psi WP). Both units will be hydraulically operated and the ram-type will be equipped with blind rams on bottom and drill pipe rams on top. All BOPE will be tested in accordance with Onshore Oil & Gas order No. 2.

3000 psi BOPE is adequate for this application. Due to the 3000 psi BOPE requirement no FIT tests are planned.

Before drilling out of the surface casing, the ram-type BOP and accessory equipment will be tested to 2000/ 250 psig and the annular preventer to 2000/ 250 psig. The surface casing will be tested to 1500 psi for 30 minutes.

EOG RESOURCES, INC.
RAMBLIN ROSE 23 FED NO. 4H

Before drilling out of the intermediate casing, the ram-type BOP and accessory equipment will be tested to 3000/ 250 psig and the annular preventer to 3000/ 250 psig. The intermediate casing will be tested to 2000 psi for 30 minutes.

Pipe rams will be operationally checked each 24-hour period. Blind rams will be operationally checked on each trip out of the hole. These checks will be noted on the daily tour sheets.

A hydraulically operated choke will be installed prior to drilling out of the intermediate casing shoe.

6. TYPES AND CHARACTERISTICS OF THE PROPOSED MUD SYSTEM:

During this procedure we plan to use a Closed-Loop System and haul contents to the required disposal.

The applicable depths and properties of the drilling fluid systems are as follows.

Depth	Type	Weight (ppg)	Viscosity	Water Loss
0 – 1285'	Fresh Water Gel	8.6-8.8	28-34	N/c
1285' – 4,000'	Saturated Brine	10.0-10.2	28-34	N/c
4,000' – 7,922'	Fresh Water	8.4-8.6	28-34	N/c
7,922' – 13,750' Lateral	Cut Brine Water	9.0-9.5	28-34	N/c

An electronic pit volume totalizer (PVT) will be utilized on the circulating system, to monitor pit volume, flow rate, pump pressure and stroke rate.

Sufficient mud materials to maintain mud properties and meet minimum lost circulation and weight increase requirements will be kept at the wellsite at all times.

7. AUXILIARY WELL CONTROL AND MONITORING EQUIPMENT:

- (A) A kelly cock will be kept in the drill string at all times.
- (B) A full opening drill pipe-stabbing valve (inside BOP) with proper drill pipe connections will be on the rig floor at all times.
- (C) H₂S monitoring and detection equipment will be utilized from surface casing point to TD.

EOG RESOURCES, INC.
RAMBLIN ROSE 23 FED NO. 4H

8. LOGGING, TESTING AND CORING PROGRAM:

Open-hole logs are not planned for this well.

*See
COA*

GR-CCL Will be run in cased hole during completions phase of operations.

**9. ABNORMAL CONDITIONS, PRESSURES, TEMPERATURES AND
POTENTIAL HAZARDS:**

The estimated bottom-hole temperature (BHT) at TD is 145 degrees F with an estimated maximum bottom-hole pressure (BHP) at TD of 3637 psig. No hydrogen sulfide or other hazardous gases or fluids have been encountered, reported or are known to exist at this depth in this area. No major loss circulation zones have been reported in offsetting wells.

10. ANTICIPATED STARTING DATE AND DURATION OF OPERATIONS:

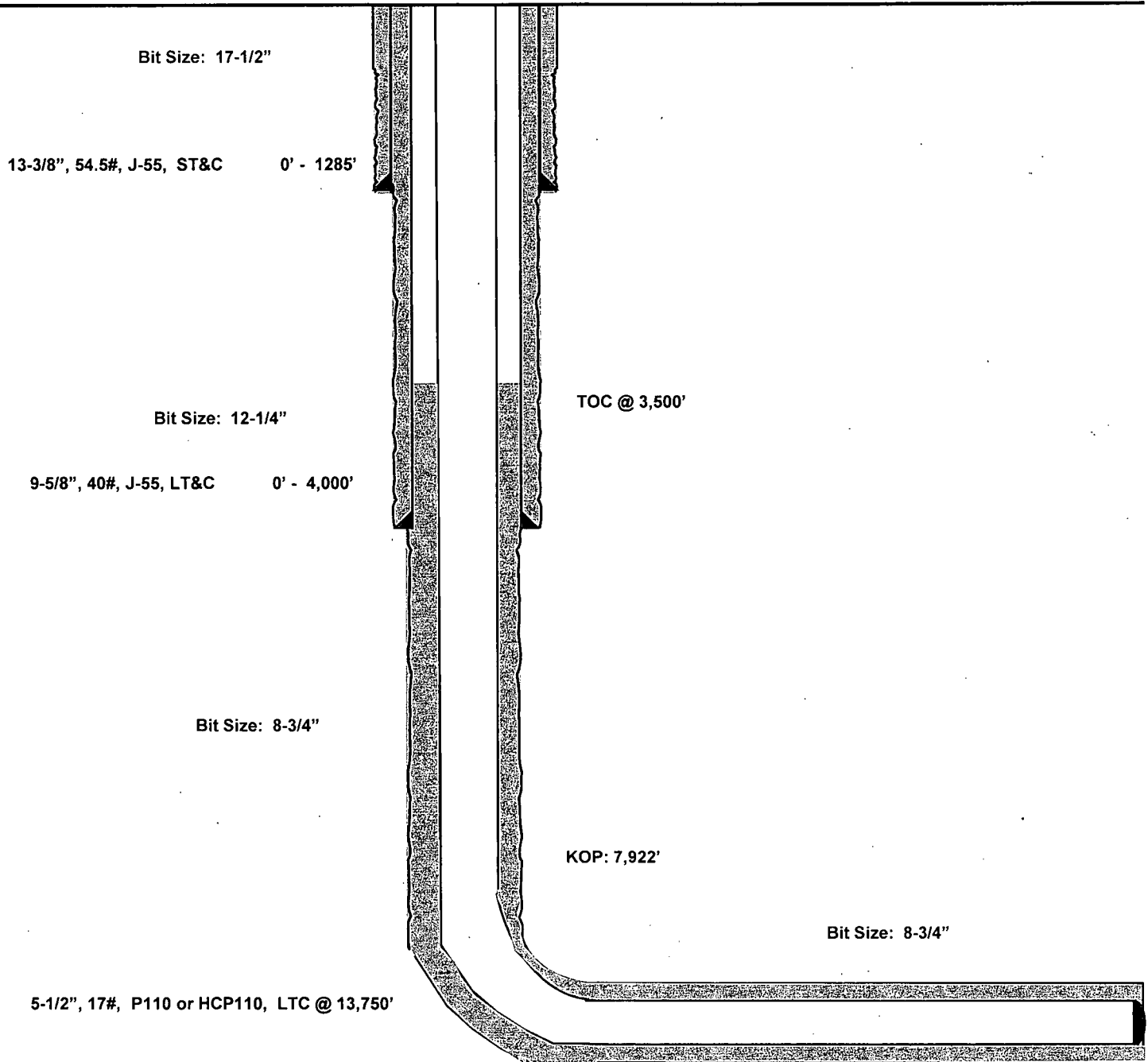
The drilling operation should be finished in approximately one month. If the well is productive, an additional 60-90 days will be required for completion and testing before a decision is made to install permanent facilities.

Ramblin Rose 23 Fed #4H
Eddy County, New Mexico
Proposed Wellbore

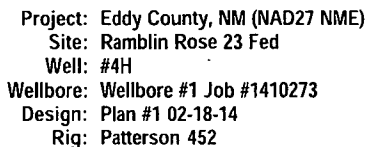
450' FNL
915' FWL
Section 23
T-26-S, R-31-E

API: 30-015-*****

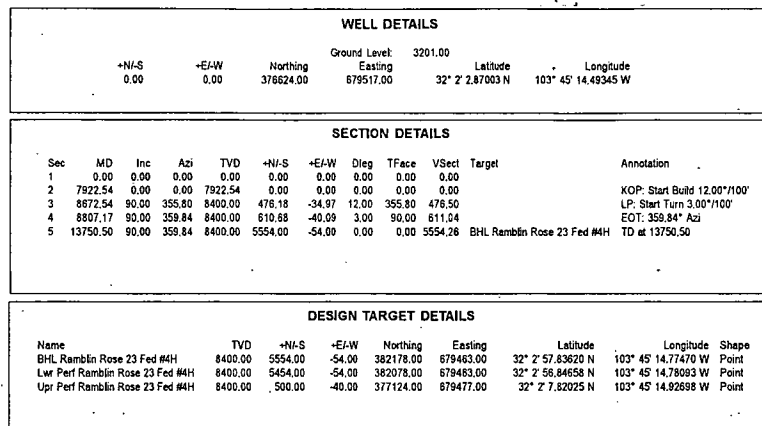
KB: 3,231'
GL: 3,201'



Lateral:
13,750' MD, 8,400' TVD
Upper Most Perf:
50' FSL & 879' FWL
Lower Most Perf:
330' FNL & 880' FWL
BH Location: 230' FNL & 880' FWL
Section 14
T-26-S, R-31-E

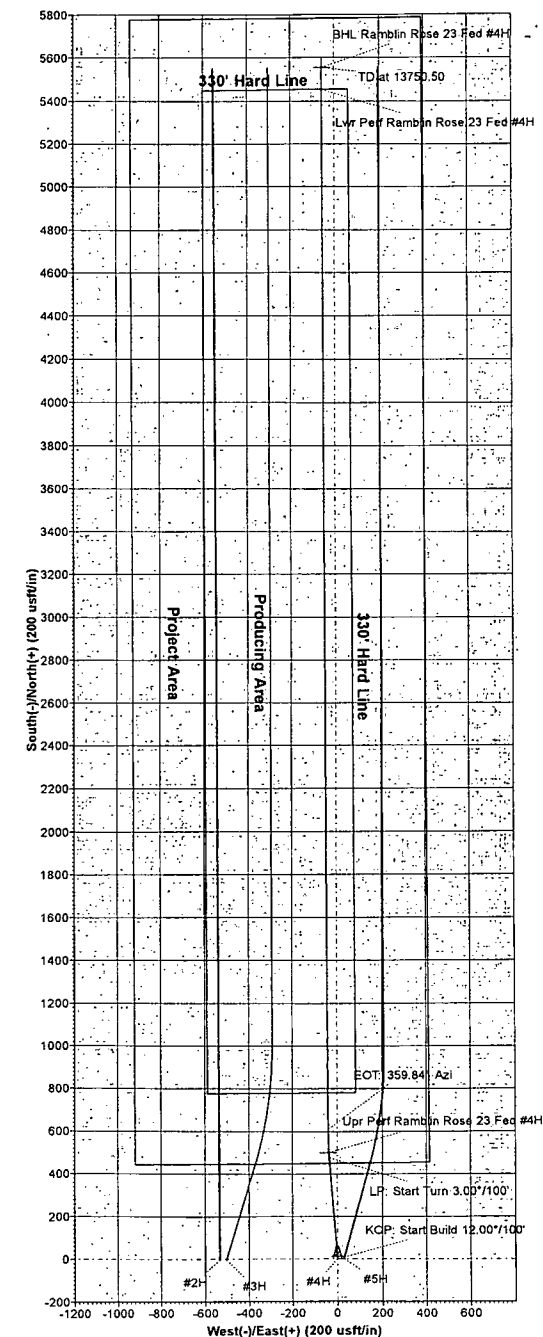
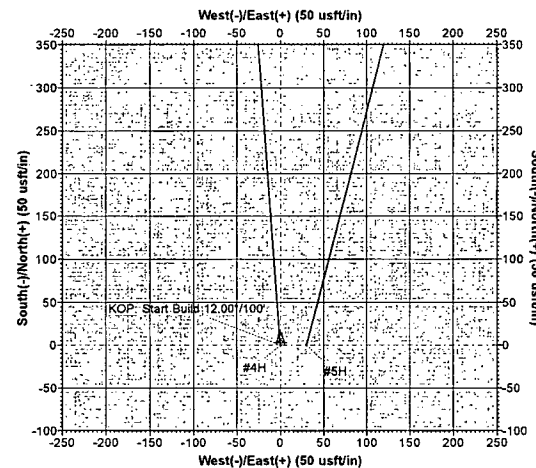


Magnetic Field
Strength: 48217.1nT
Dip Angle: 59.91°
Date: 02/13/2014
Model: IGRF2010_14



To convert a Magnetic Direction to a Grid Direction, Add 7.02°
 To convert a Magnetic Direction to a True Direction, Add 7.33° East
 To convert a True Direction to a Grid Direction, Subtract 0.31°

#5H, Wellbore #1 Job #1410274, Plan #1 02-18-14 V0
 #2H, WB1/Job #1410037, Plan #1 01-04-14 V0
 #3H, WB1/Job #1410038, Plan #1 01-04-14 V0
 Plan #1 02-18-14





EOG Resources

Eddy County, NM (NAD27 NME)

Ramblin Rose 23 Fed

#4H

Wellbore #1 Job #1410273

Plan: Plan #1 02-18-14

Planning Report

18 February, 2014





Phoenix Technology Services
Planning Report



Company:	EOG Resources	Local Co-ordinate Reference:	Well #4H
Project:	Eddy County, NM (NAD27 NME)	TVD Reference:	WELL @ 3228.00usft (Patterson 452)
Site:	Ramblin Rose 23 Fed	MD Reference:	WELL @ 3228.00usft (Patterson 452)
Well:	#4H	North Reference:	Grid
Wellbore:	Wellbore #1 Job #1410273	Survey Calculation Method:	Minimum Curvature
Design:	Plan #1 02-18-14	Database:	Compass 5000 GCR DB

Project:	Eddy County, NM (NAD27 NME)		
Map System:	US State Plane 1927 (Exact solution)	System Datum:	Mean Sea Level
Geo Datum:	NAD 1927 (NADCON CONUS)		
Map Zone:	New Mexico East 3001		

Site:	Ramblin Rose 23 Fed		
Site Position:		Northing:	376,620.00 usft
From:	Map	Easting:	678,982.00 usft
Position Uncertainty:	0.00 usft	Slot Radius:	13-3/16 "
		Latitude:	32° 2' 2.85880 N
		Longitude:	103° 45' 20.70869 W
		Grid Convergence:	0.31 °

Well:	#4H					
Well Position	+N/-S	0.00 usft	Northing:	376,624.00 usft	Latitude:	32° 2' 2.87003 N
	+E/-W	0.00 usft	Easting:	679,517.00 usft	Longitude:	103° 45' 14.49345 W
Position Uncertainty	0.00 usft	Wellhead Elevation:	usft	Ground Level:	3,201.00 usft	

Wellbore:	Wellbore #1 Job #1410273				
Magnetics:	Model Name	Sample Date	Declination	Dip Angle	Field Strength
	IGRF2010_14	02/13/14	(°)	(°)	(nT)
			7.33	59.91	48,217

Design:	Plan #1 02-18-14			
Audit Notes:				
Version:	Phase:	PROTOTYPE	Tie On Depth:	0.00
Vertical Section:	Depth From (TVD)	+N/-S	+E/-W	Direction
	(usft)	(usft)	(usft)	(°)
	0.00	0.00	0.00	359.44

Survey Tool Program:	Date	02/18/14		
From	To	Survey (Wellbore)	Tool Name	Description
(usft)	(usft)			
0.00	13,750.50	Plan #1 02-18-14 (Wellbore #1 Job #1410	MWD	MWD - Standard



Phoenix Technology Services Planning Report



Company: EOG Resources
Project: Eddy County, NM (NAD27 NME)
Site: Ramblin Rose 23 Fed
Well: #4H
Wellbore: Wellbore #1 Job #1410273
Design: Plan #1 02-18-14

Local Co-ordinate Reference: Well #4H
TVD Reference: WELL @ 3228.00usft (Patterson 452)
MD Reference: WELL @ 3228.00usft (Patterson 452)
North Reference: Grid
Survey Calculation Method: Minimum Curvature
Database: Compass 5000 GCR DB

Planned Survey

MD (usft)	Inc (°)	Azi (azimuth) (°)	TVDSS (usft)	TVD (usft)	N/S (usft)	E/W (usft)	Northing (usft)	Easting (usft)	V. Sec (usft)	DLeg (°/100usft)
0.00	0.00	0.00	-3,228.00	0.00	0.00	0.00	376,624.00	679,517.00	0.00	0.00
100.00	0.00	0.00	-3,128.00	100.00	0.00	0.00	376,624.00	679,517.00	0.00	0.00
200.00	0.00	0.00	-3,028.00	200.00	0.00	0.00	376,624.00	679,517.00	0.00	0.00
300.00	0.00	0.00	-2,928.00	300.00	0.00	0.00	376,624.00	679,517.00	0.00	0.00
400.00	0.00	0.00	-2,828.00	400.00	0.00	0.00	376,624.00	679,517.00	0.00	0.00
500.00	0.00	0.00	-2,728.00	500.00	0.00	0.00	376,624.00	679,517.00	0.00	0.00
600.00	0.00	0.00	-2,628.00	600.00	0.00	0.00	376,624.00	679,517.00	0.00	0.00
700.00	0.00	0.00	-2,528.00	700.00	0.00	0.00	376,624.00	679,517.00	0.00	0.00
800.00	0.00	0.00	-2,428.00	800.00	0.00	0.00	376,624.00	679,517.00	0.00	0.00
900.00	0.00	0.00	-2,328.00	900.00	0.00	0.00	376,624.00	679,517.00	0.00	0.00
1,000.00	0.00	0.00	-2,228.00	1,000.00	0.00	0.00	376,624.00	679,517.00	0.00	0.00
1,100.00	0.00	0.00	-2,128.00	1,100.00	0.00	0.00	376,624.00	679,517.00	0.00	0.00
1,200.00	0.00	0.00	-2,028.00	1,200.00	0.00	0.00	376,624.00	679,517.00	0.00	0.00
1,300.00	0.00	0.00	-1,928.00	1,300.00	0.00	0.00	376,624.00	679,517.00	0.00	0.00
1,400.00	0.00	0.00	-1,828.00	1,400.00	0.00	0.00	376,624.00	679,517.00	0.00	0.00
1,500.00	0.00	0.00	-1,728.00	1,500.00	0.00	0.00	376,624.00	679,517.00	0.00	0.00
1,600.00	0.00	0.00	-1,628.00	1,600.00	0.00	0.00	376,624.00	679,517.00	0.00	0.00
1,700.00	0.00	0.00	-1,528.00	1,700.00	0.00	0.00	376,624.00	679,517.00	0.00	0.00
1,800.00	0.00	0.00	-1,428.00	1,800.00	0.00	0.00	376,624.00	679,517.00	0.00	0.00
1,900.00	0.00	0.00	-1,328.00	1,900.00	0.00	0.00	376,624.00	679,517.00	0.00	0.00
2,000.00	0.00	0.00	-1,228.00	2,000.00	0.00	0.00	376,624.00	679,517.00	0.00	0.00
2,100.00	0.00	0.00	-1,128.00	2,100.00	0.00	0.00	376,624.00	679,517.00	0.00	0.00
2,200.00	0.00	0.00	-1,028.00	2,200.00	0.00	0.00	376,624.00	679,517.00	0.00	0.00
2,300.00	0.00	0.00	-928.00	2,300.00	0.00	0.00	376,624.00	679,517.00	0.00	0.00
2,400.00	0.00	0.00	-828.00	2,400.00	0.00	0.00	376,624.00	679,517.00	0.00	0.00
2,500.00	0.00	0.00	-728.00	2,500.00	0.00	0.00	376,624.00	679,517.00	0.00	0.00
2,600.00	0.00	0.00	-628.00	2,600.00	0.00	0.00	376,624.00	679,517.00	0.00	0.00



Phoenix Technology Services Planning Report



Company: EOG Resources
Project: Eddy County, NM (NAD27 NME)
Site: Ramblin Rose 23 Fed
Well: #4H
Wellbore: Wellbore #1 Job #1410273
Design: Plan #1 02-18-14

Local Co-ordinate Reference: Well #4H
TVD Reference: WELL @ 3228.00usft (Patterson 452)
MD Reference: WELL @ 3228.00usft (Patterson 452)
North Reference: Grid
Survey Calculation Method: Minimum Curvature
Database: Compass 5000 GCR DB

Planned Survey

MD (usft)	Inc (°)	Azi (azimuth) (°)	TVDSS (usft)	TVD (usft)	N/S (usft)	E/W (usft)	Northing (usft)	Easting (usft)	V. Sec (usft)	DLeg (°/100usft)
2,700.00	0.00	0.00	-528.00	2,700.00	0.00	0.00	376,624.00	679,517.00	0.00	0.00
2,800.00	0.00	0.00	-428.00	2,800.00	0.00	0.00	376,624.00	679,517.00	0.00	0.00
2,900.00	0.00	0.00	-328.00	2,900.00	0.00	0.00	376,624.00	679,517.00	0.00	0.00
3,000.00	0.00	0.00	-228.00	3,000.00	0.00	0.00	376,624.00	679,517.00	0.00	0.00
3,100.00	0.00	0.00	-128.00	3,100.00	0.00	0.00	376,624.00	679,517.00	0.00	0.00
3,200.00	0.00	0.00	-28.00	3,200.00	0.00	0.00	376,624.00	679,517.00	0.00	0.00
3,300.00	0.00	0.00	72.00	3,300.00	0.00	0.00	376,624.00	679,517.00	0.00	0.00
3,400.00	0.00	0.00	172.00	3,400.00	0.00	0.00	376,624.00	679,517.00	0.00	0.00
3,500.00	0.00	0.00	272.00	3,500.00	0.00	0.00	376,624.00	679,517.00	0.00	0.00
3,600.00	0.00	0.00	372.00	3,600.00	0.00	0.00	376,624.00	679,517.00	0.00	0.00
3,700.00	0.00	0.00	472.00	3,700.00	0.00	0.00	376,624.00	679,517.00	0.00	0.00
3,800.00	0.00	0.00	572.00	3,800.00	0.00	0.00	376,624.00	679,517.00	0.00	0.00
3,900.00	0.00	0.00	672.00	3,900.00	0.00	0.00	376,624.00	679,517.00	0.00	0.00
4,000.00	0.00	0.00	772.00	4,000.00	0.00	0.00	376,624.00	679,517.00	0.00	0.00
4,100.00	0.00	0.00	872.00	4,100.00	0.00	0.00	376,624.00	679,517.00	0.00	0.00
4,200.00	0.00	0.00	972.00	4,200.00	0.00	0.00	376,624.00	679,517.00	0.00	0.00
4,300.00	0.00	0.00	1,072.00	4,300.00	0.00	0.00	376,624.00	679,517.00	0.00	0.00
4,400.00	0.00	0.00	1,172.00	4,400.00	0.00	0.00	376,624.00	679,517.00	0.00	0.00
4,500.00	0.00	0.00	1,272.00	4,500.00	0.00	0.00	376,624.00	679,517.00	0.00	0.00
4,600.00	0.00	0.00	1,372.00	4,600.00	0.00	0.00	376,624.00	679,517.00	0.00	0.00
4,700.00	0.00	0.00	1,472.00	4,700.00	0.00	0.00	376,624.00	679,517.00	0.00	0.00
4,800.00	0.00	0.00	1,572.00	4,800.00	0.00	0.00	376,624.00	679,517.00	0.00	0.00
4,900.00	0.00	0.00	1,672.00	4,900.00	0.00	0.00	376,624.00	679,517.00	0.00	0.00
5,000.00	0.00	0.00	1,772.00	5,000.00	0.00	0.00	376,624.00	679,517.00	0.00	0.00
5,100.00	0.00	0.00	1,872.00	5,100.00	0.00	0.00	376,624.00	679,517.00	0.00	0.00
5,200.00	0.00	0.00	1,972.00	5,200.00	0.00	0.00	376,624.00	679,517.00	0.00	0.00
5,300.00	0.00	0.00	2,072.00	5,300.00	0.00	0.00	376,624.00	679,517.00	0.00	0.00



Phoenix Technology Services Planning Report



Company: EOG Resources
Project: Eddy County, NM (NAD27 NME)
Site: Ramblin Rose 23 Fed
Well: #4H
Wellbore: Wellbore #1 Job #1410273
Design: Plan #1 02-18-14

Local Co-ordinate Reference: Well #4H
TVD Reference: WELL @ 3228.00usft (Patterson 452)
MD Reference: WELL @ 3228.00usft (Patterson 452)
North Reference: Grid
Survey Calculation Method: Minimum Curvature
Database: Compass 5000 GCR DB

Planned Survey

MD (usft)	Inc (°)	Azi (azimuth) (°)	TVDSS (usft)	TVD (usft)	N/S (usft)	E/W (usft)	Northing (usft)	Easting (usft)	V. Sec (usft)	DLeg (°/100usft)
5,400.00	0.00	0.00	2,172.00	5,400.00	0.00	0.00	376,624.00	679,517.00	0.00	0.00
5,500.00	0.00	0.00	2,272.00	5,500.00	0.00	0.00	376,624.00	679,517.00	0.00	0.00
5,600.00	0.00	0.00	2,372.00	5,600.00	0.00	0.00	376,624.00	679,517.00	0.00	0.00
5,700.00	0.00	0.00	2,472.00	5,700.00	0.00	0.00	376,624.00	679,517.00	0.00	0.00
5,800.00	0.00	0.00	2,572.00	5,800.00	0.00	0.00	376,624.00	679,517.00	0.00	0.00
5,900.00	0.00	0.00	2,672.00	5,900.00	0.00	0.00	376,624.00	679,517.00	0.00	0.00
6,000.00	0.00	0.00	2,772.00	6,000.00	0.00	0.00	376,624.00	679,517.00	0.00	0.00
6,100.00	0.00	0.00	2,872.00	6,100.00	0.00	0.00	376,624.00	679,517.00	0.00	0.00
6,200.00	0.00	0.00	2,972.00	6,200.00	0.00	0.00	376,624.00	679,517.00	0.00	0.00
6,300.00	0.00	0.00	3,072.00	6,300.00	0.00	0.00	376,624.00	679,517.00	0.00	0.00
6,400.00	0.00	0.00	3,172.00	6,400.00	0.00	0.00	376,624.00	679,517.00	0.00	0.00
6,500.00	0.00	0.00	3,272.00	6,500.00	0.00	0.00	376,624.00	679,517.00	0.00	0.00
6,600.00	0.00	0.00	3,372.00	6,600.00	0.00	0.00	376,624.00	679,517.00	0.00	0.00
6,700.00	0.00	0.00	3,472.00	6,700.00	0.00	0.00	376,624.00	679,517.00	0.00	0.00
6,800.00	0.00	0.00	3,572.00	6,800.00	0.00	0.00	376,624.00	679,517.00	0.00	0.00
6,900.00	0.00	0.00	3,672.00	6,900.00	0.00	0.00	376,624.00	679,517.00	0.00	0.00
7,000.00	0.00	0.00	3,772.00	7,000.00	0.00	0.00	376,624.00	679,517.00	0.00	0.00
7,100.00	0.00	0.00	3,872.00	7,100.00	0.00	0.00	376,624.00	679,517.00	0.00	0.00
7,200.00	0.00	0.00	3,972.00	7,200.00	0.00	0.00	376,624.00	679,517.00	0.00	0.00
7,300.00	0.00	0.00	4,072.00	7,300.00	0.00	0.00	376,624.00	679,517.00	0.00	0.00
7,400.00	0.00	0.00	4,172.00	7,400.00	0.00	0.00	376,624.00	679,517.00	0.00	0.00
7,500.00	0.00	0.00	4,272.00	7,500.00	0.00	0.00	376,624.00	679,517.00	0.00	0.00
7,600.00	0.00	0.00	4,372.00	7,600.00	0.00	0.00	376,624.00	679,517.00	0.00	0.00
7,700.00	0.00	0.00	4,472.00	7,700.00	0.00	0.00	376,624.00	679,517.00	0.00	0.00
7,800.00	0.00	0.00	4,572.00	7,800.00	0.00	0.00	376,624.00	679,517.00	0.00	0.00
7,900.00	0.00	0.00	4,672.00	7,900.00	0.00	0.00	376,624.00	679,517.00	0.00	0.00



Phoenix Technology Services
Planning Report



Company: EOG Resources
Project: Eddy County, NM (NAD27 NME)
Site: Ramblin Rose 23 Fed
Well: #4H
Wellbore: Wellbore #1 Job #1410273
Design: Plan #1 02-18-14

Local Co-ordinate Reference: Well #4H
TVD Reference: WELL @ 3228.00usft (Patterson 452)
MD Reference: WELL @ 3228.00usft (Patterson 452)
North Reference: Grid
Survey Calculation Method: Minimum Curvature
Database: Compass 5000 GCR DB

Planned Survey

MD (usft)	Inc (°)	Azi (azimuth) (°)	TVDSS (usft)	TVD (usft)	N/S (usft)	E/W (usft)	Northing (usft)	Easting (usft)	V. Sec (usft)	DLeg (*/100usft)
7,922.54	0.00	0.00	4,694.54	7,922.54	0.00	0.00	376,624.00	679,517.00	0.00	0.00
KOP: Start Build 12.00°/100'										
7,925.00	0.30	355.80	4,697.00	7,925.00	0.01	0.00	376,624.01	679,517.00	0.01	12.00
7,950.00	3.30	355.80	4,721.98	7,949.98	0.79	-0.06	376,624.79	679,516.94	0.79	12.00
7,975.00	6.30	355.80	4,746.89	7,974.89	2.87	-0.21	376,626.87	679,516.79	2.87	12.00
8,000.00	9.30	355.80	4,771.66	7,999.66	6.25	-0.46	376,630.25	679,516.54	6.26	12.00
8,025.00	12.30	355.80	4,796.22	8,024.22	10.92	-0.80	376,634.92	679,516.20	10.93	12.00
8,050.00	15.30	355.80	4,820.49	8,048.49	16.87	-1.24	376,640.87	679,515.76	16.88	12.00
8,075.00	18.30	355.80	4,844.42	8,072.42	24.07	-1.77	376,648.07	679,515.23	24.09	12.00
8,100.00	21.30	355.80	4,867.94	8,095.94	32.51	-2.39	376,656.51	679,514.61	32.53	12.00
8,125.00	24.30	355.80	4,890.99	8,118.99	42.17	-3.10	376,666.17	679,513.90	42.20	12.00
8,150.00	27.30	355.80	4,913.49	8,141.49	53.02	-3.89	376,677.02	679,513.11	53.06	12.00
8,175.00	30.30	355.80	4,935.40	8,163.40	65.03	-4.78	376,689.03	679,512.22	65.07	12.00
8,200.00	33.30	355.80	4,956.65	8,184.65	78.16	-5.74	376,702.16	679,511.26	78.22	12.00
8,225.00	36.30	355.80	4,977.17	8,205.17	92.39	-6.78	376,716.39	679,510.22	92.45	12.00
8,250.00	39.30	355.80	4,996.93	8,224.93	107.67	-7.91	376,731.67	679,509.09	107.74	12.00
8,275.00	42.30	355.80	5,015.85	8,243.85	123.96	-9.10	376,747.96	679,507.90	124.04	12.00
8,300.00	45.30	355.80	5,033.89	8,261.89	141.21	-10.37	376,765.21	679,506.63	141.30	12.00
8,325.00	48.30	355.80	5,051.01	8,279.01	159.38	-11.70	376,783.38	679,505.30	159.49	12.00
8,350.00	51.30	355.80	5,067.14	8,295.14	178.42	-13.10	376,802.42	679,503.90	178.54	12.00
8,375.00	54.30	355.80	5,082.26	8,310.26	198.28	-14.56	376,822.28	679,502.44	198.41	12.00
8,400.00	57.30	355.80	5,096.31	8,324.31	218.90	-16.07	376,842.90	679,500.93	219.04	12.00
8,425.00	60.30	355.80	5,109.26	8,337.26	240.22	-17.64	376,864.22	679,499.36	240.38	12.00
8,450.00	63.30	355.80	5,121.08	8,349.08	262.19	-19.25	376,886.19	679,497.75	262.36	12.00
8,475.00	66.30	355.80	5,131.72	8,359.72	284.75	-20.91	376,908.75	679,496.09	284.94	12.00
8,500.00	69.30	355.80	5,141.17	8,369.17	307.83	-22.61	376,931.83	679,494.39	308.03	12.00
8,525.00	72.30	355.80	5,149.39	8,377.39	331.37	-24.33	376,955.37	679,492.67	331.59	12.00



Phoenix Technology Services Planning Report



Company: EOG Resources
Project: Eddy County, NM (NAD27 NME)
Site: Ramblin Rose 23 Fed
Well: #4H
Wellbore: Wellbore #1 Job #1410273
Design: Plan #1 02-18-14

Local Co-ordinate Reference: Well #4H
TVD Reference: WELL @ 3228.00usft (Patterson 452)
MD Reference: WELL @ 3228.00usft (Patterson 452)
North Reference: Grid
Survey Calculation Method: Minimum Curvature
Database: Compass 5000 GCR DB

Planned Survey

MD (usft)	Inc (°)	Azi (azimuth) (°)	TVDSS (usft)	TVD (usft)	N/S (usft)	E/W (usft)	Northing (usft)	Easting (usft)	V. Sec (usft)	DLeg (°/100usft)
8,550.00	75.30	355.80	5,156.37	8,384.37	355.31	-26.09	376,979.31	679,490.91	355.55	12.00
8,575.00	78.30	355.80	5,162.08	8,390.08	379.58	-27.87	377,003.58	679,489.13	379.83	12.00
8,600.00	81.30	355.80	5,166.51	8,394.51	404.12	-29.68	377,028.12	679,487.32	404.38	12.00
8,625.00	84.30	355.80	5,169.64	8,397.64	428.85	-31.49	377,052.85	679,485.51	429.13	12.00
8,650.00	87.30	355.80	5,171.47	8,399.47	453.71	-33.32	377,077.71	679,483.68	454.01	12.00
8,672.54	90.00	355.80	5,172.00	8,400.00	476.18	-34.97	377,100.18	679,482.03	476.50	12.00
LP: Start Turn 3.00°/100'										
8,700.00	90.00	356.62	5,172.00	8,400.00	503.58	-36.78	377,127.58	679,480.22	503.92	3.00
8,807.17	90.00	359.84	5,172.00	8,400.00	610.68	-40.09	377,234.68	679,476.91	611.04	3.00
EOT: 359.84° Azi										
8,900.00	90.00	359.84	5,172.00	8,400.00	703.52	-40.35	377,327.52	679,476.65	703.88	0.00
9,000.00	90.00	359.84	5,172.00	8,400.00	803.52	-40.63	377,427.52	679,476.37	803.87	0.00
9,100.00	90.00	359.84	5,172.00	8,400.00	903.52	-40.91	377,527.52	679,476.09	903.87	0.00
9,200.00	90.00	359.84	5,172.00	8,400.00	1,003.52	-41.20	377,627.52	679,475.80	1,003.87	0.00
9,300.00	90.00	359.84	5,172.00	8,400.00	1,103.52	-41.48	377,727.52	679,475.52	1,103.87	0.00
9,400.00	90.00	359.84	5,172.00	8,400.00	1,203.51	-41.76	377,827.51	679,475.24	1,203.86	0.00
9,500.00	90.00	359.84	5,172.00	8,400.00	1,303.51	-42.04	377,927.51	679,474.96	1,303.86	0.00
9,600.00	90.00	359.84	5,172.00	8,400.00	1,403.51	-42.32	378,027.51	679,474.68	1,403.86	0.00
9,700.00	90.00	359.84	5,172.00	8,400.00	1,503.51	-42.60	378,127.51	679,474.40	1,503.86	0.00
9,800.00	90.00	359.84	5,172.00	8,400.00	1,603.51	-42.88	378,227.51	679,474.12	1,603.85	0.00
9,900.00	90.00	359.84	5,172.00	8,400.00	1,703.51	-43.17	378,327.51	679,473.83	1,703.85	0.00
10,000.00	90.00	359.84	5,172.00	8,400.00	1,803.51	-43.45	378,427.51	679,473.55	1,803.85	0.00
10,100.00	90.00	359.84	5,172.00	8,400.00	1,903.51	-43.73	378,527.51	679,473.27	1,903.85	0.00
10,200.00	90.00	359.84	5,172.00	8,400.00	2,003.51	-44.01	378,627.51	679,472.99	2,003.84	0.00
10,300.00	90.00	359.84	5,172.00	8,400.00	2,103.51	-44.29	378,727.51	679,472.71	2,103.84	0.00
10,400.00	90.00	359.84	5,172.00	8,400.00	2,203.51	-44.57	378,827.51	679,472.43	2,203.84	0.00
10,500.00	90.00	359.84	5,172.00	8,400.00	2,303.51	-44.85	378,927.51	679,472.15	2,303.84	0.00



Phoenix Technology Services Planning Report



Company: EOG Resources
Project: Eddy County, NM (NAD27 NME)
Site: Ramblin Rose 23 Fed
Well: #4H
Wellbore: Wellbore #1 Job #1410273
Design: Plan #1 02-18-14

Local Co-ordinate Reference: Well #4H
TVD Reference: WELL @ 3228.00usft (Patterson 452)
MD Reference: WELL @ 3228.00usft (Patterson 452)
North Reference: Grid
Survey Calculation Method: Minimum Curvature
Database: Compass 5000 GCR DB

Planned Survey

MD (usft)	Inc (°)	Azi (azimuth) (°)	TVDSS (usft)	TVD (usft)	N/S (usft)	E/W (usft)	Northing (usft)	Easting (usft)	V. Sec (usft)	DLeg (°/100usft)
10,600.00	90.00	359.84	5,172.00	8,400.00	2,403.51	-45.13	379,027.51	679,471.87	2,403.84	0.00
10,700.00	90.00	359.84	5,172.00	8,400.00	2,503.51	-45.42	379,127.51	679,471.58	2,503.83	0.00
10,800.00	90.00	359.84	5,172.00	8,400.00	2,603.51	-45.70	379,227.51	679,471.30	2,603.83	0.00
10,900.00	90.00	359.84	5,172.00	8,400.00	2,703.51	-45.98	379,327.51	679,471.02	2,703.83	0.00
11,000.00	90.00	359.84	5,172.00	8,400.00	2,803.51	-46.26	379,427.51	679,470.74	2,803.83	0.00
11,100.00	90.00	359.84	5,172.00	8,400.00	2,903.51	-46.54	379,527.51	679,470.46	2,903.82	0.00
11,200.00	90.00	359.84	5,172.00	8,400.00	3,003.51	-46.82	379,627.51	679,470.18	3,003.82	0.00
11,300.00	90.00	359.84	5,172.00	8,400.00	3,103.51	-47.10	379,727.51	679,469.90	3,103.82	0.00
11,400.00	90.00	359.84	5,172.00	8,400.00	3,203.51	-47.39	379,827.51	679,469.61	3,203.82	0.00
11,500.00	90.00	359.84	5,172.00	8,400.00	3,303.51	-47.67	379,927.51	679,469.33	3,303.81	0.00
11,600.00	90.00	359.84	5,172.00	8,400.00	3,403.51	-47.95	380,027.51	679,469.05	3,403.81	0.00
11,700.00	90.00	359.84	5,172.00	8,400.00	3,503.51	-48.23	380,127.51	679,468.77	3,503.81	0.00
11,800.00	90.00	359.84	5,172.00	8,400.00	3,603.51	-48.51	380,227.51	679,468.49	3,603.81	0.00
11,900.00	90.00	359.84	5,172.00	8,400.00	3,703.51	-48.79	380,327.51	679,468.21	3,703.80	0.00
12,000.00	90.00	359.84	5,172.00	8,400.00	3,803.50	-49.07	380,427.50	679,467.93	3,803.80	0.00
12,100.00	90.00	359.84	5,172.00	8,400.00	3,903.50	-49.36	380,527.50	679,467.64	3,903.80	0.00
12,200.00	90.00	359.84	5,172.00	8,400.00	4,003.50	-49.64	380,627.50	679,467.36	4,003.80	0.00
12,300.00	90.00	359.84	5,172.00	8,400.00	4,103.50	-49.92	380,727.50	679,467.08	4,103.79	0.00
12,400.00	90.00	359.84	5,172.00	8,400.00	4,203.50	-50.20	380,827.50	679,466.80	4,203.79	0.00
12,500.00	90.00	359.84	5,172.00	8,400.00	4,303.50	-50.48	380,927.50	679,466.52	4,303.79	0.00
12,600.00	90.00	359.84	5,172.00	8,400.00	4,403.50	-50.76	381,027.50	679,466.24	4,403.79	0.00
12,700.00	90.00	359.84	5,172.00	8,400.00	4,503.50	-51.04	381,127.50	679,465.96	4,503.79	0.00
12,800.00	90.00	359.84	5,172.00	8,400.00	4,603.50	-51.33	381,227.50	679,465.67	4,603.78	0.00
12,900.00	90.00	359.84	5,172.00	8,400.00	4,703.50	-51.61	381,327.50	679,465.39	4,703.78	0.00
13,000.00	90.00	359.84	5,172.00	8,400.00	4,803.50	-51.89	381,427.50	679,465.11	4,803.78	0.00
13,100.00	90.00	359.84	5,172.00	8,400.00	4,903.50	-52.17	381,527.50	679,464.83	4,903.78	0.00
13,200.00	90.00	359.84	5,172.00	8,400.00	5,003.50	-52.45	381,627.50	679,464.55	5,003.77	0.00



Phoenix Technology Services Planning Report



Company: EOG Resources
Project: Eddy County, NM (NAD27 NME)
Site: Ramblin Rose 23 Fed
Well: #4H
Wellbore: Wellbore #1 Job #1410273
Design: Plan #1 02-18-14

Local Co-ordinate Reference:
TVD Reference: WELL @ 3228.00usft (Patterson 452)
MD Reference: WELL @ 3228.00usft (Patterson 452)
North Reference: Grid
Survey Calculation Method: Minimum Curvature
Database: Compass 5000 GCR DB

Planned Survey

MD (usft)	Inc (°)	Azi (azimuth) (°)	TVDSS (usft)	TVD (usft)	N/S (usft)	E/W (usft)	Northing (usft)	Easting (usft)	V. Sec (usft)	DLeg (°/100usft)
13,300.00	90.00	359.84	5,172.00	8,400.00	5,103.50	-52.73	381,727.50	679,464.27	5,103.77	0.00
13,400.00	90.00	359.84	5,172.00	8,400.00	5,203.50	-53.01	381,827.50	679,463.99	5,203.77	0.00
13,500.00	90.00	359.84	5,172.00	8,400.00	5,303.50	-53.30	381,927.50	679,463.70	5,303.77	0.00
13,600.00	90.00	359.84	5,172.00	8,400.00	5,403.50	-53.58	382,027.50	679,463.42	5,403.76	0.00
13,700.00	90.00	359.84	5,172.00	8,400.00	5,503.50	-53.86	382,127.50	679,463.14	5,503.76	0.00
13,750.50	90.00	359.84	5,172.00	8,400.00	5,554.00	-54.00	382,178.00	679,463.00	5,554.26	0.00

TD at 13750.50

Plan Annotations

Measured Depth (usft)	Vertical Depth (usft)	Local Coordinates		Comment
		+N/-S (usft)	+E/-W (usft)	
7,922.54	7,922.54	0.00	0.00	KOP: Start Build 12.00°/100'
8,672.54	8,400.00	476.18	-34.97	LP: Start Turn 3.00°/100'
8,807.17	8,400.00	610.68	-40.09	EOT: 359.84° Azi
13,750.50	8,400.00	5,554.00	-54.00	TD at 13750.50

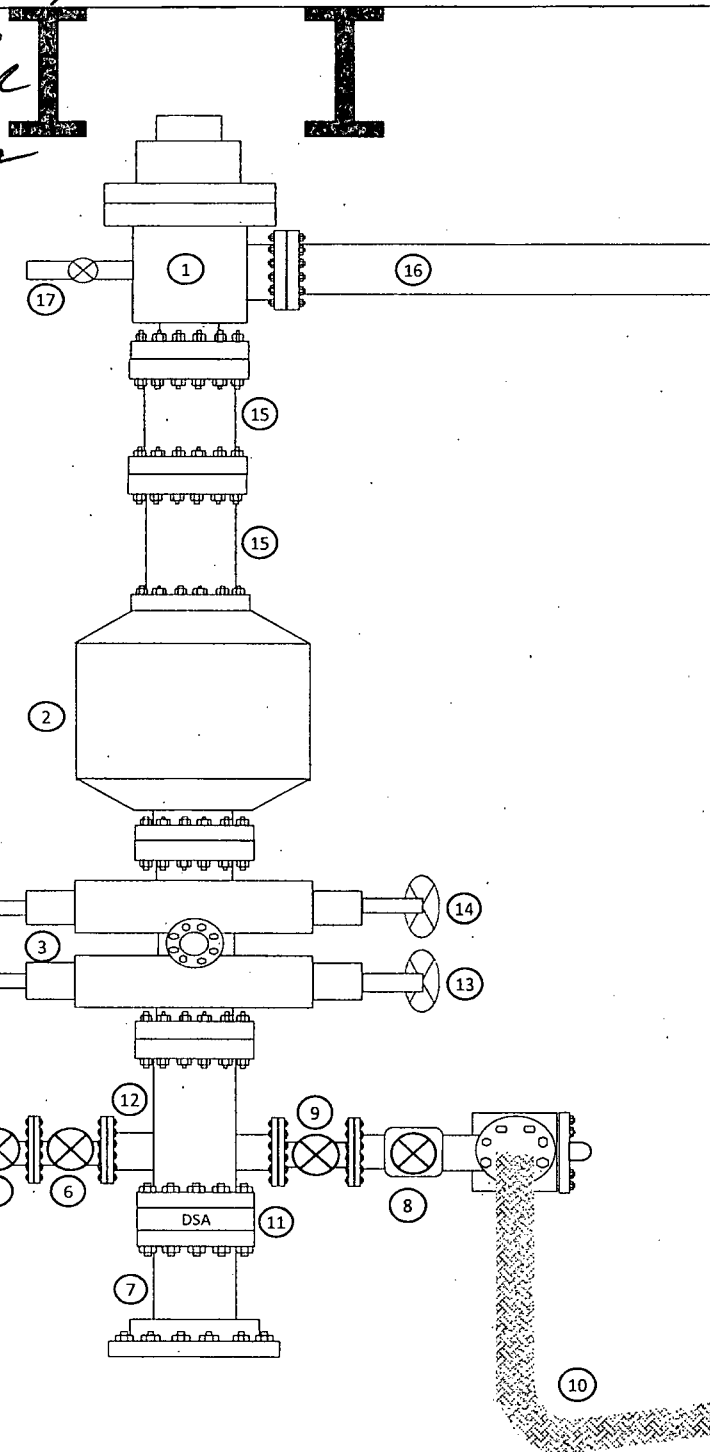
EOG Resources

5 10M BOPE

R. Motley Exhibit #1

Rig Floor

open
HPL
3/29/14



1. 13 5/8" Rotating Head
2. Hydril 13 5/8" 5,000 PSI WP GK Annular Preventor
3. 13 5/8" Cameron Type "U" 10,000 PSI WP Ram Preventors
4. 2 1/16" - 10,000 PSI WP Check Valve
5. 10,000 PSI WP - 1502 Union to kill line
6. 2 1/16" - 10,000 PSI WP Manual Valves
7. 13 5/8" 3,000 PSI WP x 13 5/8" 5,000 PSI WP Spacer Spool
8. 4 1/16" 10,000 PSI WP HCR Valve
9. 4 1/16" 10,000 PSI WP Manual Valve
10. 8" OD x 4" ID 10,000 PSI WP Flex Choke Line
11. DSA - 13 5/8" 10,000 PSI WP x 13 5/8" 5,000 PSI WP
12. Mud Cross - 13 5/8" 10,000 PSI WP
13. Blind Rams
14. Pipe Rams
15. 13 5/8" 5,000 PSI WP Spacer Spools
16. Flow Line
17. 2" Fill Line

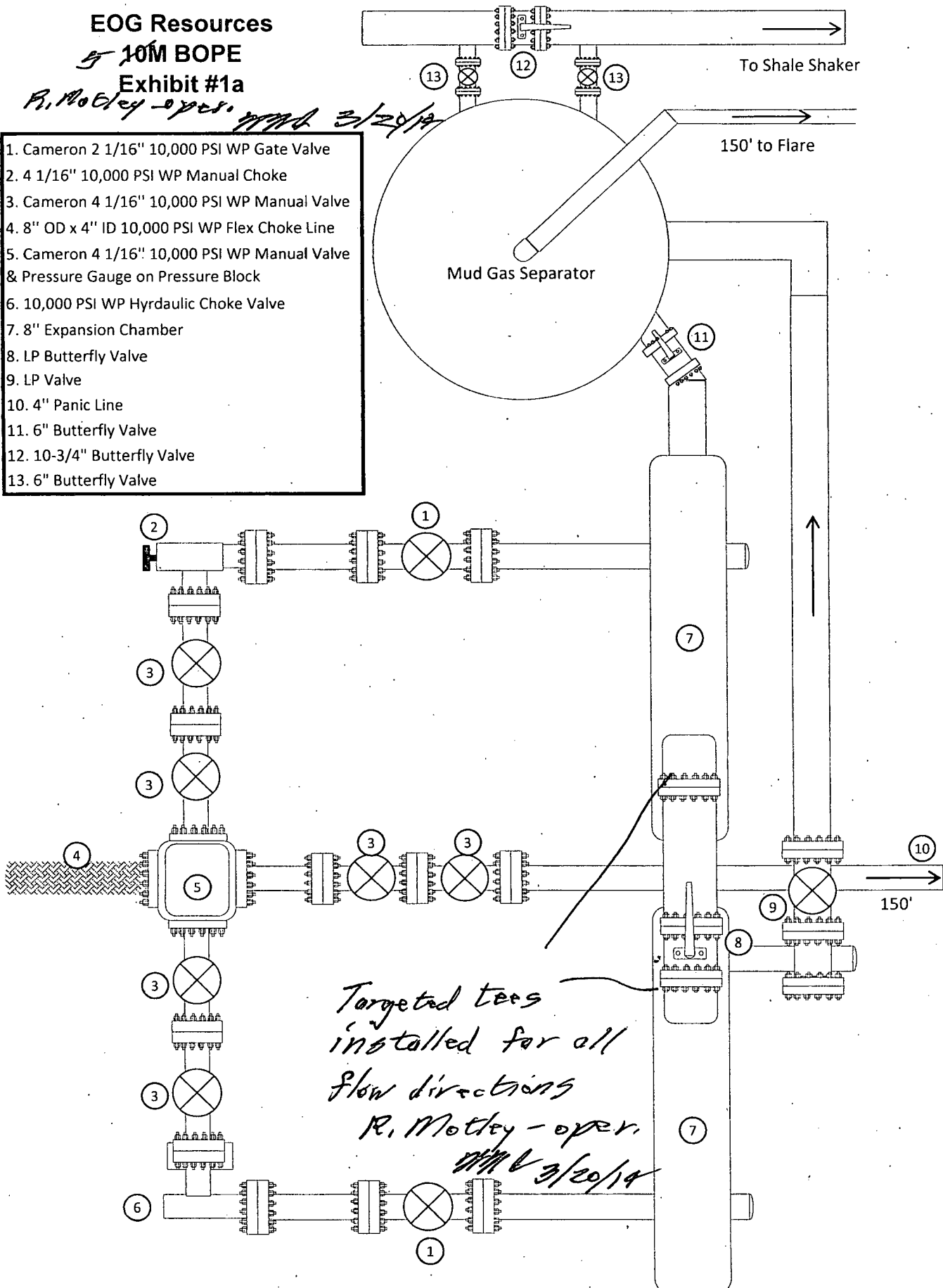
EOG Resources

5 10M BOPE

Exhibit #1a

R. Motley - oper. MML 3/29/14

1. Cameron 2 1/16" 10,000 PSI WP Gate Valve
2. 4 1/16" 10,000 PSI WP Manual Choke
3. Cameron 4 1/16" 10,000 PSI WP Manual Valve
4. 8" OD x 4" ID 10,000 PSI WP Flex Choke Line
5. Cameron 4 1/16" 10,000 PSI WP Manual Valve & Pressure Gauge on Pressure Block
6. 10,000 PSI WP Hydraulic Choke Valve
7. 8" Expansion Chamber
8. LP Butterfly Valve
9. LP Valve
10. 4" Panic Line
11. 6" Butterfly Valve
12. 10-3/4" Butterfly Valve
13. 6" Butterfly Valve



M I D W E S T
HOSE AND SPECIALTY INC.

INTERNAL HYDROSTATIC TEST REPORT			
Customer: CACTUS		P.O. Number: RIG #123 Asset # M10761	
HOSE SPECIFICATIONS			
Type: CHOKER LINE		Length: 35'	
I.D. 4" INCHES		O.D. 8" INCHES	
WORKING PRESSURE 10,000 PSI	TEST PRESSURE 15,000 PSI	BURST PRESSURE PSI	
COUPLINGS			
Type of End Fitting 4 1/16 10K FLANGE			
Type of Coupling: SWEDGED		MANUFACTURED BY MIDWEST HOSE & SPECIALTY	
PROCEDURE			
<i>Hose assembly pressure tested with water at ambient temperature.</i>			
TIME HELD AT TEST PRESSURE 1 MIN.		ACTUAL BURST PRESSURE: 0 PSI	
COMMENTS: SN#90067 M10761 Hose is covered with stainless steel armour cover and wrapped with fire resistant vermiculite coated fiberglass insulation rated for 1500 degrees complete with lifting eyes			
Date: 6/6/2011	Tested By: BOBBY FINK		Approved: MENDI JACKSON



Midwest Hose
& Specialty, Inc.

Internal Hydrostatic Test Graph

Customer: CACTUS

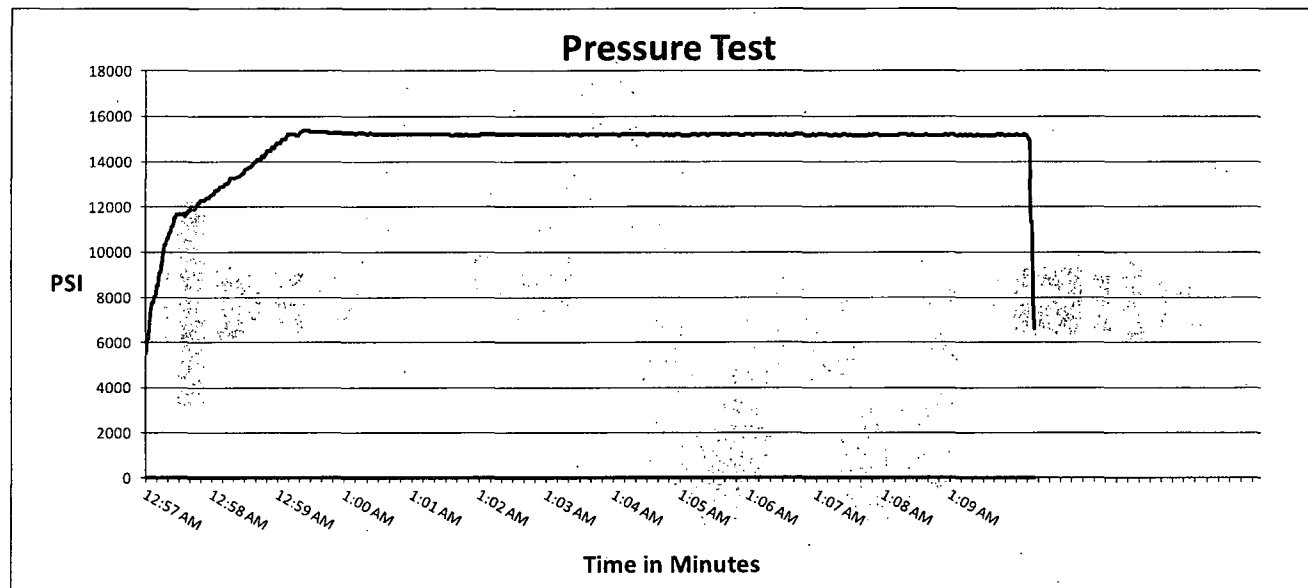
SALES ORDER# 90067

Hose Specifications

<u>Hose Type</u>	<u>Length</u>
C & K	35'
<u>I.D.</u>	<u>O.D.</u>
4"	8"
<u>Working Pressure</u>	<u>Burst Pressure</u>
10000 PSI	Standard Safety Multiplier Applies

Verification

<u>Type of Fitting</u>	<u>Coupling Method</u>
4 1/16 10K	Swage
<u>Die Size</u>	<u>Final O.D.</u>
6.62"	6.68"
<u>Hose Serial #</u>	<u>Hose Assembly Serial #</u>
	90067



Test Pressure
15000 PSI

Time Held at Test Pressure
11 1/4 Minutes

Actual Burst Pressure

Peak Pressure
15439 PSI

Comments: Hose assembly pressure tested with water at ambient temperature.

Tested By: Bobby Fink

Approved By: Mendi Jackson

Manufacturer: Midwest Hose & Specialty

Serial Number: SN#90067

Length: 35'

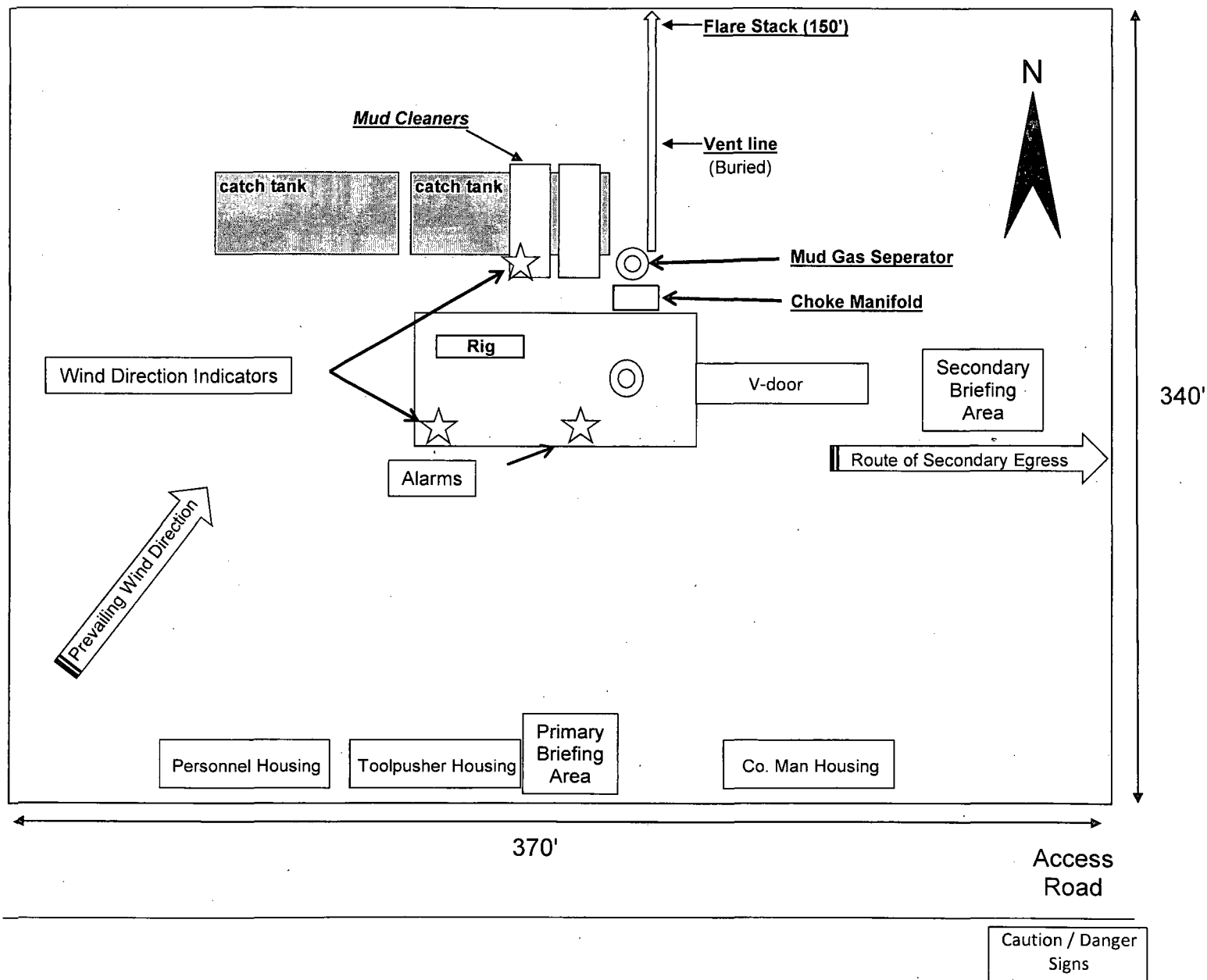
Size: OD = 8" ID = 4"

Ends: Flanges Size: 4-1/16"

WP Rating: 10,000 psi Anchors required by manufacturer: No

Exhibit 4
EOG Resources
Ramblin Rose 23 Fed #4H

Well Site Diagram



EOG RESOURCES, INC.
RAMBLIN ROSE 23 FED NO. 4H

Hydrogen Sulfide Plan Summary

- A. All personnel shall receive proper H₂S training in accordance with Onshore Order III.C.3.a.
- B. Briefing Area: two perpendicular areas will be designated by signs and readily accessible.
- C. Required Emergency Equipment:

- Well control equipment
 - a. Flare line 150' from wellhead to be ignited by flare gun.
 - b. Choke manifold with a remotely operated choke.
 - c. Mud/gas separator

- Protective equipment for essential personnel.

Breathing apparatus:

- a. Rescue Packs (SCBA) — 1 unit shall be placed at each breathing area, 2 shall be stored in the safety trailer.
- b. Work/Escapes packs — 4 packs shall be stored on the rig floor with sufficient air hose not to restrict work activity.
- c. Emergency Escape Packs — 4 packs shall be stored in the doghouse for emergency evacuation.

Auxiliary Rescue Equipment:

- a. Stretcher
- b. Two OSHA full body harness
- c. 100 ft 5/8 inch OSHA approved rope
- d. 1-20# class ABC fire extinguisher

- H₂S detection and monitoring equipment:

The stationary detector with three sensors will be placed in the upper dog house if equipped, set to visually alarm @ 10 ppm and audible @ 14 ppm. Calibrate a minimum of every 30 days or as needed. The sensors will be placed in the following places: Rig floor / Bell nipple / End of flow line or where well bore fluid is being discharged.

(Gas sample tubes will be stored in the safety trailer)

- Visual warning systems.
 - a. One color code condition sign will be placed at the entrance to the site reflecting the possible conditions at the site.
 - b. A colored condition flag will be on display, reflecting the current condition at the site at the time.
 - c. Two wind socks will be placed in strategic locations, visible from all angles.

EOG RESOURCES, INC.
RAMBLIN ROSE 23 FED NO. 4H

Emergency Assistance Telephone List

PUBLIC SAFETY:		911 or
Eddy County Sheriff's Department		(575) 887-7551
Kent Waller		
Fire Department:		
Carlsbad		(575) 885-3125
Artesia		(575) 746-5050
Hospitals:		
Carlsbad		(575) 887-4121
Artesia		(575) 748-3333
Hobbs		(575) 392-1979
Dept. of Public Safety/Carlsbad		(575) 748-9718
Highway Department		(575) 885-3281
New Mexico Oil Conservation		(575) 476-3440
U.S. Dept. of Labor		(575) 887-1174

EOG Resources, Inc.

EOG / Midland	Office (432) 686-3600
---------------	-----------------------

Company Drilling Consultants:

Danny Kiser Will Henderson	Cell (432) 894-3417
Larry King	

Drilling Engineer

Robert Brosig	Office (432) 686-3737
	Cell (432) 770-0705

Drilling Manager

Steve Munsell	Office (432) 686-3609
	Cell (432) 894-1256

Drilling Superintendents

Ron Welch	Office (432) 686-3695
	Cell (432) 386-0592

Cactus Drilling

Cactus Drilling	Office (580) 799-2752
Cactus 123 Drilling Rig	Rig (432) 894-3417

Tool Pusher:

Jack Herndon	Cell (405) 519-6552
Larry Slife	Cell (405) 250-6368

Safety

Reggie Phillips (HSE Manager)	Office (432) 686-3747
	Cell (303) 501-4587

Surface Use Plan of Operations

Introduction

The following surface use plan of operations will be followed and carried out once the APD is approved. No other disturbance will be created other than what was submitted in this surface use plan. If any other surface disturbance is needed after the APD is approved, a BLM approved sundry notice or right of way application will be acquired prior to any new surface disturbance.

Before any surface disturbance is created, stakes or flagging will be installed to mark boundaries of permitted areas of disturbance, including soils storage areas. As necessary, slope, grade, and other construction control stakes will be placed to ensure construction in accordance with the surface use plan. All boundary markers will be maintained in place until final construction cleanup is completed. If disturbance boundary markers are disturbed or knocked down, they will be replaced before construction proceeds.

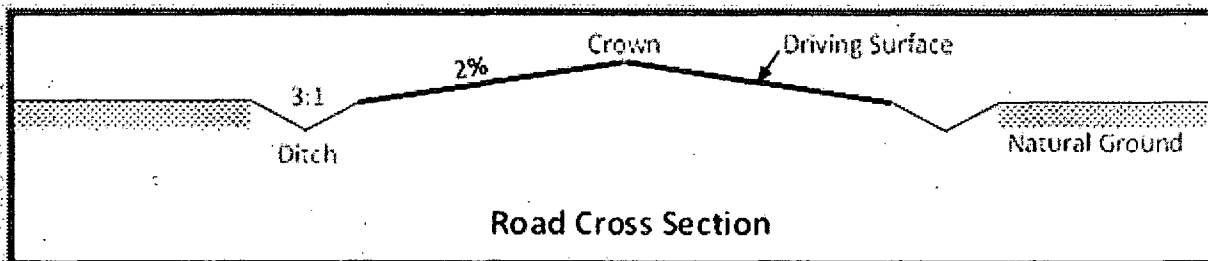
If terms and conditions are attached to the approved APD and amend any of the proposed actions in this surface use plan, we will adhere to the terms and conditions.

1. Existing Roads

- a. The existing access road route to the proposed project is depicted on Exhibit 2A. Improvements to the driving surface will be done where necessary. No new surface disturbance will be done, unless otherwise noted in the New or Reconstructed Access Roads section of this surface use plan..
- b. The existing access road route to the proposed project does not cross lease or unit boundaries, so a BLM right-of-way grant will not be acquired for this proposed road route.
- c. The operator will improve or maintain existing roads in a condition the same as or better than before operations begin. The operator will repair pot holes, clear ditches, repair the crown, etc. All existing structures on the entire access route such as cattleguards, other range improvement projects, culverts, etc. will be properly repaired or replaced if they are damaged or have deteriorated beyond practical use.
- d. We will prevent and abate fugitive dust as needed, whether created by vehicular traffic, equipment operations, or wind events. BLM written approval will be acquired before application of surfactants, binding agents, or other dust suppression chemicals on roadways.

2. New or Reconstructed Access Roads

- a. An access road will be needed for this proposed project. See the survey plat for the location of the access road.
- b. The length of access road needed to be constructed for this proposed project is about 1167 feet.
- c. The maximum driving width of the access road will be 14 feet. The maximum width of surface disturbance when constructing the access road will not exceed 25 feet. All areas outside of the driving surface will be revegetated.
- d. The access road will be constructed with 6 inches of compacted caliche.
- e. When the road travels on fairly level ground, the road will be crowned and ditched with a 2% slope from the tip of the road crown to the edge of the driving surface. The ditches will be 3 feet wide with 3:1 slopes. See Road Cross Section diagram below.



- f. The access road will be constructed with a ditch on each side of the road.
- g. The maximum grade for the access road will be 2 percent.
- h. No turnouts will be constructed on the proposed access road.
- i. No cattleguards will be installed for this proposed access road.
- j. No BLM right-of-way grant is needed for the construction of this access road.
- k. No culverts will be constructed for this proposed access road.
- l. No low water crossings will be constructed for the access road.
- m. Since the access road is on level ground, no lead-off ditches will be constructed for the proposed access road.
- n. Newly constructed or reconstructed roads, on surface under the jurisdiction of the Bureau of Land Management, will be constructed as outlined in the BLM "Gold Book" and to meet the standards of the anticipated traffic flow and all anticipated weather requirements as needed. Construction will include ditching, draining, crowning and capping or sloping and dipping the roadbed as necessary to provide a well-constructed and safe road.

3. Location of Existing Wells

- a. Exhibit 3 of the APD depicts all known wells within a one mile radius of the proposed well.
- b. There is no other information regarding wells within a one mile radius.

4. Location of Existing and/or Proposed Production Facilities

- a. All permanent, lasting more than 6 months, above ground structures including but not limited to pumpjacks, storage tanks, barrels, pipeline risers, meter housing, etc. that are not subject to safety requirements will be painted a non-reflective paint color, Shale Green, from the BLM Standard Environmental Colors chart, unless another color is required in the APD Conditions of Approval.
- b. If any type of production facilities are located on the well pad, they will be strategically placed to allow for maximum interim reclamation, recontouring, and revegetation of the well location.
- c. A production facility is proposed to be installed on the proposed well location. Production from the well will be processed on site in the production facility. Exhibit 2C depicts the location of the production facilities as they relate to the well and well pad.
- d. The proposed production facility will have a secondary containment structure that is constructed to hold the capacity of 1-1/2 times the largest tank, plus freeboard to account for precipitation, unless more stringent protective requirements are deemed necessary.
- e. There is no other diagram that depicts production facilities.

If any plans change regarding the production facility or other infrastructure (pipeline, electric line, etc.), we will submit a sundry notice or right of way (if applicable) prior to installation or construction.

Additional Pipeline(s)

We propose to install 4 additional pipeline(s):

1. Surface natural gas for gas lifting of production pipeline:
 - a. We plan to install a 4 inch surface polyethylene pipeline from an existing gas lift line located at the Ramblin Rose 14 Fed #1 well to the proposed well. The proposed length of the pipeline will be 4,494 feet. The working pressure of the pipeline will be 124 psi or less. The pipeline will transport natural gas for gas lifting of production. If the pipeline route follows an existing road or buried pipeline right-of-way, the surface pipeline will be installed no farther than 10 feet from the edge of the road or buried pipeline right-of-way. If existing surface pipelines prevent this distance, the proposed surface pipeline will be installed immediately adjacent to the outer surface pipeline. All construction and maintenance activity will be confined to existing roads or right-of-ways.
 - b. Exhibit 5 depicts the proposed natural gas for gas lifting of production pipeline route.
 - c. The proposed pipeline does not cross lease boundaries, so a right of way grant will not need to be acquired from the BLM.
2. Surface produced water pipeline:
 - a. We plan to install a 4 inch surface polyethylene pipeline from the proposed well to an existing produced water line located at the Ramblin Rose 14 Fed #1 well. The proposed length of the pipeline will be 4,494 feet. The working pressure of the pipeline will be 124 psi or less. The pipeline will transport produced water. If the pipeline route follows an existing road or buried pipeline right-of-way, the surface pipeline will be installed no farther than 10 feet from the edge of the road or buried pipeline right-of-way. If existing surface pipelines prevent this distance, the proposed surface pipeline will be installed immediately adjacent to the outer surface pipeline. All construction and maintenance activity will be confined to existing roads or right-of-ways.
 - b. Exhibit 5 depicts the proposed produced water pipeline route.
 - c. The proposed pipeline does not cross lease boundaries, so a right of way grant will not need to be acquired from the BLM.
3. Surface produced water pipeline:
 - a. We plan to install a 4 inch surface polyethylene pipeline from the proposed well to an existing produced water line located at the Ramblin Rose 14 Fed #1 well. The proposed length of the pipeline will be 4,494 feet. The working pressure of the pipeline will be 124 psi or less. The pipeline will transport produced water. If the pipeline route follows an existing road or buried pipeline right-of-way, the surface pipeline will be installed no farther than 10 feet from the edge of the road or buried pipeline right-of-way. If existing surface pipelines prevent this distance, the proposed surface pipeline will be installed immediately adjacent to the outer surface pipeline. All construction and maintenance activity will be confined to existing roads or right-of-ways.
 - b. Exhibit 5 depicts the proposed produced water pipeline route.
 - c. The proposed pipeline does not cross lease boundaries, so a right of way grant will not need to

be acquired from the BLM.

4. Surface natural gas to sales pipeline:

a. We plan to install a 4 inch surface polyethylene pipeline from the proposed well to an existing sales line at the Ramblin Rose 14 Fed #1 well. The proposed length of the pipeline will be 4,444 feet. The working pressure of the pipeline will be 124 psi or less. The pipeline will transport natural gas to sales. If the pipeline route follows an existing road or buried pipeline right-of-way, the surface pipeline will be installed no farther than 10 feet from the edge of the road or buried pipeline right-of-way. If existing surface pipelines prevent this distance, the proposed surface pipeline will be installed immediately adjacent to the outer surface pipeline. All construction and maintenance activity will be confined to existing roads or right-of-ways.

b. Exhibit 5 depicts the proposed natural gas to sales pipeline route.

c. The proposed pipeline does not cross lease boundaries, so a right of way grant will not need to be acquired from the BLM.

Electric Line(s)

a. We plan to install an overhead electric line for the proposed well. The proposed length of the electric line will be 4,444 feet. Exhibit 5 depicts the location of the proposed electric line route. The electric line will be construction to provide protection from raptor electrocution.

b. The proposed electric line does not cross lease boundaries, so a right of way grant will not need to be acquired from the BLM.

5. Location and Types of Water

a. The source and location of the water supply are as follows: This location will be drilled using a combination of water mud systems (outlined in the drilling program) The water will be obtained from commercial water stations in the area and hauled to location by trucks or poly pipelines using existing and proposed roads depicted on the proposed existing access road maps. In these cases where a poly pipeline is used to transport fresh water for drilling purposes, proper authorizations will be secured by the contractor.

b. Exhibit 5 depicts the proposed route for a 4 inch polyethylene temporary (<90 days) water pipeline supplying water for drilling operations.

6. Construction Material

a. Caliche utilized for the drilling pad will be obtained either from an existing approved mineral pit, or by benching into a hill, which will allow the pad to be level with existing caliche from the cut, or extracted by "Flipping" the well location. A mineral material permit will be obtained from BLM prior to excavating any caliche on Federal Lands. Amount will vary for each pad. The procedure for "Flipping" a well location is as follows:

*

-An adequate amount of topsoil/root zone (usually top 6 inches of soil) will be stripped from the proposed well location and stockpiled along the side of the well location as depicted on the well site diagram/survey plat.

-An area will be used within the proposed well site dimensions to excavate caliche.

Subsoil will be removed and stockpiled within the surveyed well pad dimensions.

-Once caliche/surfacing mineral is found, the mineral material will be excavated and stock piled within the approved drilling pad dimensions.

-Then, subsoil will be pushed back in the excavated hole and caliche will be spread accordingly across the entire well pad and road (if available).

-Neither caliche, nor subsoil will be stock piled outside of the well pad dimensions. Topsoil will be stockpiled

along the edge of the pad as depicted in the Well Site Layout or survey plat.

*

In the event that no caliche is found onsite, caliche will be hauled in from a BLM approved caliche pit or other established mineral pit. A BLM mineral material permit will be acquired prior to obtaining any mineral material from BLM pits or federal land.

7. Methods for Handling Waste

- a. Drilling fluids and produced oil and water from the well during drilling and completion operations will be stored safely and disposed of properly in an NMOCD approved disposal facility.
- b. Garbage and trash produced during drilling and completion operations will be collected in a trash container and disposed of properly at a state approved disposal facility. All trash on and around the well site will be collected for disposal.
- c. Human waste and grey water will be properly contained and disposed of properly at a state approved disposal facility.
- d. After drilling and completion operations, trash, chemicals, salts, frac sand and other waste material will be removed and disposed of properly at a state approved disposal facility.
- e. The well will be drilled utilizing a closed loop system. Drill cutting will be properly disposed of into steel tanks and taken to an NMOCD approved disposal facility.

8. Ancillary Facilities

- a. No ancillary facilities will be needed for this proposed project.

9. Well Site Layout

- a. The following information is presented in the well site survey plat or diagram:
 - i. reasonable scale (near 1":50')
 - ii. well pad dimensions
 - iii. well pad orientation
 - iv. drilling rig components
 - v. proposed access road
 - vi. elevations of all points
 - vii. topsoil stockpile
 - viii. reserve pit location/dimensions if applicable
 - ix. other disturbances needed (flare pit, stinger, frac farm pad, etc.)
 - x. existing structures within the 600' x 600' archaeological surveyed area (pipelines, electric lines, well pads, etc)
- b. The proposed drilling pad was staked and surveyed by a professional surveyor. The attached survey plat of the well site depicts the drilling pad layout as staked.
- c. The submitted survey plat does depict all the necessary information required by Onshore Order No. 1.
- d. Topsoil Salvaging
 - i. Grass, forbs, and small woody vegetation, such as mesquite will be excavated as the topsoil is removed.

Large woody vegetation will be stripped and stored separately and respread evenly on the site following topsoil resspreading. Topsoil depth is defined as the top layer of soil that contains 80% of the roots. In areas to be heavily disturbed, the top 6 inches of soil material, will be stripped and stockpiled on the perimeter of the well location and along the perimeter of the access road to control run-on and run-off, to keep topsoil viable, and to make redistribution of topsoil more efficient during interim reclamation. Stockpiled topsoil should include vegetative material. Topsoil will be clearly segregated and stored separately from subsoils. Contaminated soil will not be stockpiled, but properly treated and handled prior to topsoil salvaging.

10. Plans for Surface Reclamation

Reclamation Objectives

- i. The objective of interim reclamation is to restore vegetative cover and a portion of the landform sufficient to maintain healthy, biologically active topsoil; control erosion; and minimize habitat and forage loss, visual impact, and weed infestation, during the life of the well or facilities.
- ii. The long-term objective of final reclamation is to return the land to a condition similar to what existed prior to disturbance. This includes restoration of the landform and natural vegetative community, hydrologic systems, visual resources, and wildlife habitats. To ensure that the long-term objective will be reached through human and natural processes, actions will be taken to ensure standards are met for site stability, visual quality, hydrological functioning, and vegetative productivity.
- iii. The BLM will be notified at least 3 days prior to commencement of any reclamation procedures.
- iv. If circumstances allow, interim reclamation and/or final reclamation actions will be completed no later than 6 months from when the final well on the location has been completed or plugged. We will gain written permission from the BLM if more time is needed.
- v. Interim reclamation will be performed on the well site after the well is drilled and completed. Exhibit 2C depicts the location and dimensions of the planned interim reclamation for the well site.

Interim Reclamation Procedures (If performed)

1. Within 30 days of well completion, the well location and surrounding areas will be cleared of, and maintained free of, all materials, trash, and equipment not required for production.
2. In areas planned for interim reclamation, all the surfacing material will be removed and returned to the original mineral pit or recycled to repair or build roads and well pads.
3. The areas planned for interim reclamation will then be recontoured to the original contour if feasible, or if not feasible, to an interim contour that blends with the surrounding topography as much as possible. Where applicable, the fill material of the well pad will be backfilled into the cut to bring the area back to the original contour. The interim cut and fill slopes prior to re-seeding will not be steeper than a 3:1 ratio, unless the adjacent native topography is steeper. Note: Constructed slopes may be much steeper during drilling, but will be recontoured to the above ratios during interim reclamation.
4. Topsoil will be evenly respread and aggressively revegetated over the entire disturbed area not needed for all-weather operations including cuts & fills. To seed the area, the proper BLM seed mixture, free of noxious weeds, will be used. Final seedbed preparation will consist of contour cultivating to a depth of 4 to 6 inches within 24 hours prior to seeding, dozer tracking, or other imprinting in order to break the soil crust and create seed germination micro-sites.
5. Proper erosion control methods will be used on the area to control erosion, runoff and siltation of the surrounding area.

6. The interim reclamation will be monitored periodically to ensure that vegetation has reestablished and that erosion is controlled.

Final Reclamation (well pad, buried pipelines, etc.)

1. Prior to final reclamation procedures, the well pad, road, and surrounding area will be cleared of material, trash, and equipment.
2. All surfacing material will be removed and returned to the original mineral pit or recycled to repair or build roads and well pads.
3. All disturbed areas, including roads, pipelines, pads, production facilities, and interim reclaimed areas will be recontoured to the contour existing prior to initial construction or a contour that blends indistinguishably with the surrounding landscape. Topsoil that was spread over the interim reclamation areas will be stockpiled prior to recontouring. The topsoil will be redistributed evenly over the entire disturbed site to ensure successful revegetation.
4. After all the disturbed areas have been properly prepared, the areas will be seeded with the proper BLM seed mixture, free of noxious weeds. Final seedbed preparation will consist of contour cultivating to a depth of 4 to 6 inches within 24 hours prior to seeding, dozer tracking, or other imprinting in order to break the soil crust and create seed germination micro-sites.
5. Proper erosion control methods will be used on the entire area to control erosion, runoff and siltation of the surrounding area.
6. All unused equipment and structures including pipelines, electric line poles, tanks, etc. that serviced the well will be removed.
7. All reclaimed areas will be monitored periodically to ensure that revegetation occurs, that the area is not redisturbed, and that erosion is controlled.

11. Surface Ownership

- a. The surface ownership of the proposed project is Federal.

12. Other Information

- a. Company Representatives:

*

Representatives responsible for ensuring compliance of the surface use plan are listed below:

*

Land and Right of Way

*

Mr. Roger Motley
Senior Lease Operations ROW Representative
EOG Resources, Inc.
P.O. Box 2267
Midland TX 79702
(432) 686-3642 Office
(361) 537-8281 Cell

Drilling

*

Mr. Steve Munsell
Drilling Engineer
EOG Resources, Inc.
P.O. Box 2267
Midland TX 79702
(432) 686-3609 Office
(432) 894-1256 Cell

Operations

*

Mr. Howard Kemp
Production Manager
EOG Resources, Inc.
P.O. Box 2267
Midland TX 79702
(432) 686-3704 Office
(432) 634-1001 Cell

Regulatory

*

Mr. Stan Wagner
Regulatory Analyst
EOG Resources, Inc.
P.O. Box 2267
Midland TX 79702
(432) 686-3689 Office

13. Maps and Diagrams

Exhibit 2A - Existing Road
Exhibit 3 - Wells Within One Mile
Exhibit 2B - Production Facilities Diagram
Exhibit 5 - natural gas for gas lifting of production Pipeline
Exhibit 5 - produced water Pipeline
Exhibit 5 - produced water Pipeline
Exhibit 5 - natural gas to sales Pipeline
Exhibit 5 - Electric Line
Exhibit 5 - Drilling Water Pipeline
Exhibit 2C - Interim Reclamation

PECOS DISTRICT CONDITIONS OF APPROVAL

OPERATOR'S NAME:	EOG Resources, Inc.
LEASE NO.:	NMLC-064756
WELL NAME & NO.:	Ramblin Rose 23 Fed 4H
SURFACE HOLE FOOTAGE:	0450' FNL & 0915' FWL
BOTTOM HOLE FOOTAGE	0230' FNL & 0880' FWL Sec. 14, T. 26 S., R 31 E.
LOCATION:	Section 23, T. 26 S., R 31 E., NMPM
COUNTY:	Eddy County, New Mexico

TABLE OF CONTENTS

Standard Conditions of Approval (COA) apply to this APD. If any deviations to these standards exist or special COAs are required, the section with the deviation or requirement will be checked below.

- ☐ **General Provisions**
- ☐ **Permit Expiration**
- ☐ **Archaeology, Paleontology, and Historical Sites**
- ☐ **Noxious Weeds**
- ☒ **Special Requirements**
 - Phantom Banks Heronry Requirements
- ☐ **Construction**
 - Notification
 - Topsoil
 - Closed Loop System
 - Federal Mineral Material Pits
 - Well Pads
 - Roads
- ☐ **Road Section Diagram**
- ☒ **Drilling**
 - Cement Requirements
 - Logging Requirements
 - Waste Material and Fluids
- ☒ **Production (Post Drilling)**
 - Well Structures & Facilities
 - Pipelines
 - Electric Lines
- ☐ **Interim Reclamation**
- ☐ **Final Abandonment & Reclamation**

I. GENERAL PROVISIONS

The approval of the Application For Permit To Drill (APD) is in compliance with all applicable laws and regulations: 43 Code of Federal Regulations 3160, the lease terms, Onshore Oil and Gas Orders, Notices To Lessees, New Mexico Oil Conservation Division (NMOCD) Rules, National Historical Preservation Act As Amended, and instructions and orders of the Authorized Officer. Any request for a variance shall be submitted to the Authorized Officer on Form 3160-5, Sundry Notices and Report on Wells.

II. PERMIT EXPIRATION

If the permit terminates prior to drilling and drilling cannot be commenced within 60 days after expiration, an operator is required to submit Form 3160-5, Sundry Notices and Reports on Wells; requesting surface reclamation requirements for any surface disturbance. However, if the operator will be able to initiate drilling within 60 days after the expiration of the permit, the operator must have set the conductor pipe in order to allow for an extension of 60 days beyond the expiration date of the APD. (Filing of a Sundry Notice is required for this 60 day extension.)

III. ARCHAEOLOGICAL, PALEONTOLOGY & HISTORICAL SITES

Any cultural and/or paleontological resource discovered by the operator or by any person working on the operator's behalf shall immediately report such findings to the Authorized Officer. The operator is fully accountable for the actions of their contractors and subcontractors. The operator shall suspend all operations in the immediate area of such discovery until written authorization to proceed is issued by the Authorized Officer. An evaluation of the discovery shall be made by the Authorized Officer to determine the appropriate actions that shall be required to prevent the loss of significant cultural or scientific values of the discovery. The operator shall be held responsible for the cost of the proper mitigation measures that the Authorized Officer assesses after consultation with the operator on the evaluation and decisions of the discovery. Any unauthorized collection or disturbance of cultural or paleontological resources may result in a shutdown order by the Authorized Officer.

IV. NOXIOUS WEEDS

The operator shall be held responsible if noxious weeds become established within the areas of operations. Weed control shall be required on the disturbed land where noxious weeds exist, which includes the roads, pads, associated pipeline corridor, and adjacent land affected by the establishment of weeds due to this action. The operator shall consult with the Authorized Officer for acceptable weed control methods, which include following EPA and BLM requirements and policies.

V. SPECIAL REQUIREMENT(S)

Phantom Banks Heronry Requirements

- Exhaust noise from pump jack engines must be muffled or otherwise controlled so as not to exceed 75 db measured at 30 ft. from the source of the noise.

VI. CONSTRUCTION

A. NOTIFICATION

The BLM shall administer compliance and monitor construction of the access road and well pad. Notify the Carlsbad Field Office at (575) 234-5909 at least 3 working days prior to commencing construction of the access road and/or well pad.

When construction operations are being conducted on this well, the operator shall have the approved APD and Conditions of Approval (COA) on the well site and they shall be made available upon request by the Authorized Officer.

B. TOPSOIL

The operator shall strip the top portion of the soil (root zone) from the entire well pad area and stockpile the topsoil along the edge of the well pad as depicted in the APD. The root zone is typically six (6) inches in depth. All the stockpiled topsoil will be redistributed over the interim reclamation areas. Topsoil shall not be used for berming the pad or facilities. For final reclamation, the topsoil shall be spread over the entire pad area for seeding preparation.

Other subsoil (below six inches) stockpiles must be completely segregated from the topsoil stockpile. Large rocks or subsoil clods (not evident in the surrounding terrain) must be buried within the approved area for interim and final reclamation.

C. CLOSED LOOP SYSTEM

Tanks are required for drilling operations: No Pits.

The operator shall properly dispose of drilling contents at an authorized disposal site.

D. FEDERAL MINERAL MATERIALS PIT

Payment shall be made to the BLM prior to removal of any federal mineral materials. Call the Carlsbad Field Office at (575) 234-5972.

E. WELL PAD SURFACING

Surfacing of the well pad is not required.

If the operator elects to surface the well pad, the surfacing material may be required to be removed at the time of reclamation. The well pad shall be constructed in a manner which creates the smallest possible surface disturbance, consistent with safety and operational needs.

F. EXCLOSURE FENCING (CELLARS & PITS)

Exclosure Fencing

The operator will install and maintain exclosure fencing for all open well cellars to prevent access to public, livestock, and large forms of wildlife before and after drilling operations until the pit is free of fluids and the operator initiates backfilling. (For examples of exclosure fencing design, refer to BLM's Oil and Gas Gold Book, Exclosure Fence Illustrations, Figure 1, Page 18.)

G. ON LEASE ACCESS ROADS

Road Width

The access road shall have a driving surface that creates the smallest possible surface disturbance and does not exceed fourteen (14) feet in width. The maximum width of surface disturbance, when constructing the access road, shall not exceed twenty-five (25) feet.

Surfacing

Surfacing material is not required on the new access road driving surface. If the operator elects to surface the new access road or pad, the surfacing material may be required to be removed at the time of reclamation.

Where possible, no improvements should be made on the unsurfaced access road other than to remove vegetation as necessary, road irregularities, safety issues, or to fill low areas that may sustain standing water.

The Authorized Officer reserves the right to require surfacing of any portion of the access road at any time deemed necessary. Surfacing may be required in the event the road deteriorates, erodes, road traffic increases, or it is determined to be beneficial for future field development. The surfacing depth and type of material will be determined at the time of notification.

Crowning

Crowning shall be done on the access road driving surface. The road crown shall have a grade of approximately 2% (i.e., a 1" crown on a 14' wide road). The road shall conform to Figure 1; cross section and plans for typical road construction.

Ditching

Ditching shall be required on both sides of the road.

Turnouts

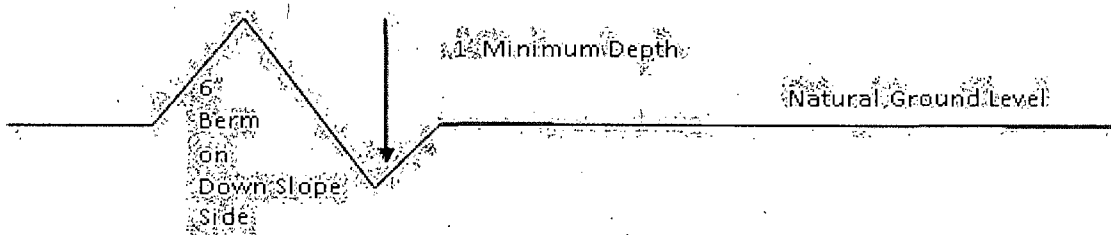
Vehicle turnouts shall be constructed on the road. Turnouts shall be intervisible with interval spacing distance less than 1000 feet. Turnouts shall conform to Figure 1; cross section and plans for typical road construction.

Drainage

Drainage control systems shall be constructed on the entire length of road (e.g. ditches, sidehill outslowing and insloping, lead-off ditches, culvert installation, and low water crossings).

A typical lead-off ditch has a minimum depth of 1 foot below and a berm of 6 inches above natural ground level. The berm shall be on the down-slope side of the lead-off ditch.

Cross Section of a Typical Lead-off Ditch



All lead-off ditches shall be graded to drain water with a 1 percent minimum to 3 percent maximum ditch slope. The spacing interval are variable for lead-off ditches and shall be determined according to the formula for spacing intervals of lead-off ditches, but may be amended depending upon existing soil types and centerline road slope (in %);

Formula for Spacing Interval of Lead-off Ditches

Example - On a 4% road slope that is 400 feet long, the water flow shall drain water into a lead-off ditch. Spacing interval shall be determined by the following formula:

$$400 \text{ foot road with } 4\% \text{ road slope: } \frac{400'}{4\%} + 100' = 200' \text{ lead-off ditch interval}$$

Cattleguards

An appropriately sized cattleguard sufficient to carry out the project shall be installed and maintained at fence/road crossings. Any existing cattleguards on the access road route shall be repaired or replaced if they are damaged or have deteriorated beyond practical use. The operator shall be responsible for the condition of the existing cattleguards that are in place and are utilized during lease operations.

Fence Requirement

Where entry is granted across a fence line, the fence shall be braced and tied off on both sides of the passageway prior to cutting. The operator shall notify the private surface landowner or the grazing allotment holder prior to crossing any fences.

Public Access

Public access on this road shall not be restricted by the operator without specific written approval granted by the Authorized Officer.

Construction Steps

1. Salvage topsoil
2. Construct road

3. Redistribute topsoil
4. Revegetate slopes

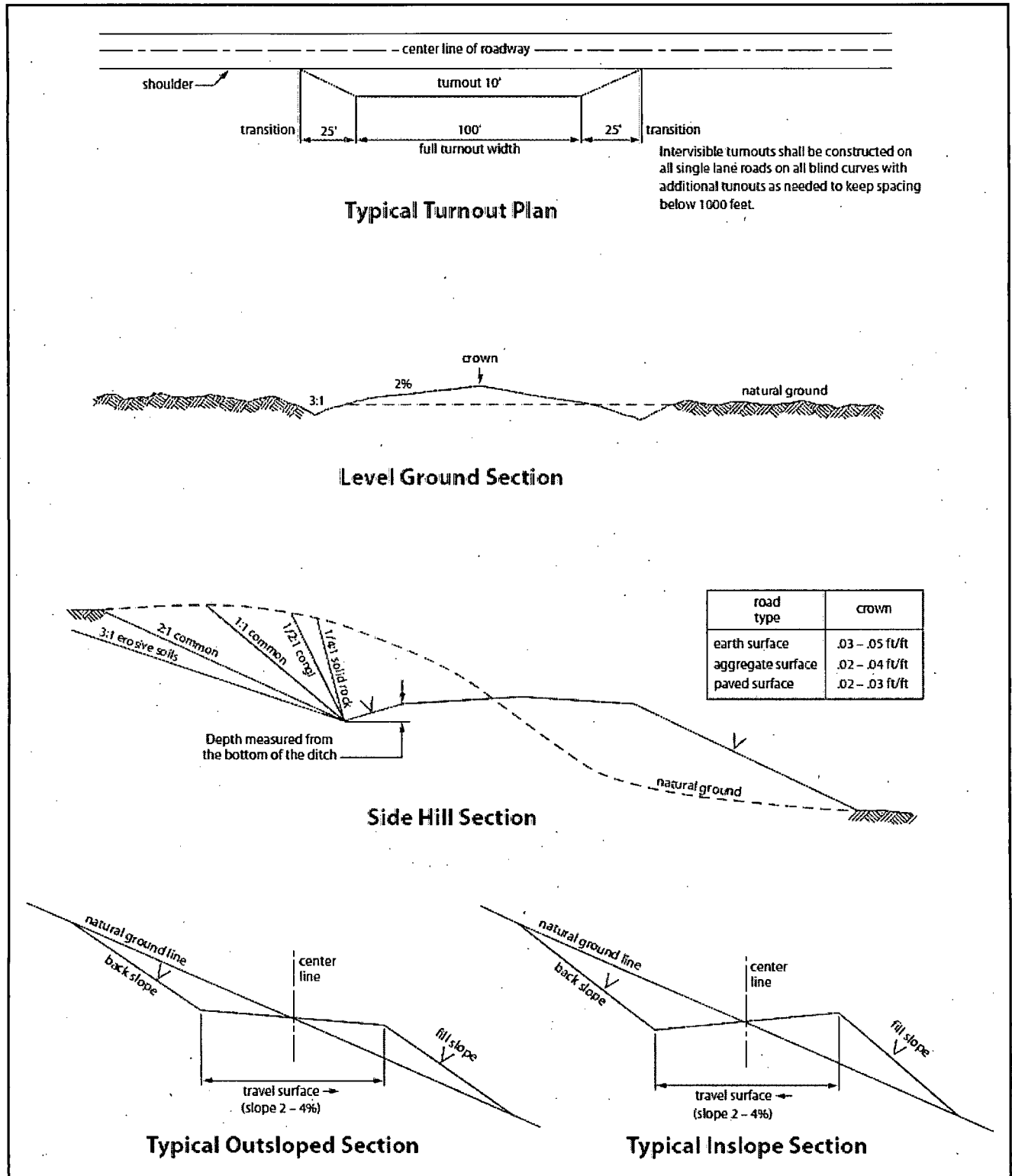


Figure 1. Cross-sections and plans for typical road sections representative of BLM resource or FS local and higher-class roads.

VII. DRILLING

A. DRILLING OPERATIONS REQUIREMENTS

The BLM is to be notified in advance for a representative to witness:

- a. Spudding well (minimum of 24 hours)
- b. Setting and/or Cementing of all casing strings (minimum of 4 hours)
- c. BOPE tests (minimum of 4 hours)

☒ **Eddy County**

Call the Carlsbad Field Office, 620 East Greene St., Carlsbad, NM 88220,
(575) 361-2822

1. **Although Hydrogen Sulfide has not been reported in the area, it is always a potential hazard. Operator has stated that they will have monitoring equipment in place prior to drilling out of the surface shoe. If Hydrogen Sulfide is encountered, report measured amounts and formations to the BLM.**
2. Unless the production casing has been run and cemented or the well has been properly plugged, the drilling rig shall not be removed from over the hole without prior approval. **If the drilling rig is removed without approval – an Incident of Non-Compliance will be written and will be a “Major” violation.**
3. Floor controls are required for 3M or Greater systems. These controls will be on the rig floor, unobstructed, readily accessible to the driller and will be operational at all times during drilling and/or completion activities. Rig floor is defined as the area immediately around the rotary table; the area immediately above the substructure on which the draw works is located, this does not include the dog house or stairway area.
4. **The record of the drilling rate along with the GR/N well log run from TD to surface (horizontal well – vertical portion of hole) shall be submitted to the BLM office as well as all other logs run on the borehole 30 days from completion. If available, a digital copy of the logs is to be submitted in addition to the paper copies. The Rustler top and top and bottom of Salt are to be recorded on the Completion Report.**

B. CASING

Changes to the approved APD casing program need prior approval if the items substituted are of lesser grade or different casing size. The Operator can exchange the components of the proposal with that of superior strength (i.e. changing from J-55 to N-80, or from 36# to 40#). Changes to the approved cement program need prior approval if the altered cement plan has less volume or strength or if the changes are substantial (i.e. Multistage tool, ECP, etc.).

Centralizers required on surface casing per Onshore Order 2.III.B.1.f.

Wait on cement (WOC) time prior to drilling out for a primary cement job will be a minimum 18 hours for a water basin, 24 hours in the potash area, or 500 pounds compressive strength, whichever is greater for all casing strings. DURING THIS WOC TIME, NO DRILL PIPE, ETC. SHALL BE RUN IN THE HOLE. Provide compressive strengths including hours to reach required 500 pounds compressive strength prior to cementing each casing string. IF OPERATOR DOES NOT HAVE THE WELL SPECIFIC CEMENT DETAILS ONSITE PRIOR TO PUMPING THE CEMENT FOR EACH CASING STRING, THE WOC WILL BE 30 HOURS. See individual casing strings for details regarding lead cement slurry requirements.

No pea gravel permitted for remedial or fall back remedial without prior authorization from the BLM engineer.

Possibility of water flows in the Salado and Castile.

Possibility of lost circulation in the Rustler, Red Beds, and Delaware.

1. The 13-3/8 inch surface casing shall be set at approximately **1285** feet (a minimum of 25 feet into the Rustler Anhydrite and above the salt) and cemented to the surface. **If salt is encountered, set casing at least 25 feet above the salt. Excess calculates to 16% - Additional cement may be required.**
 - a. If cement does not circulate to the surface, the appropriate BLM office shall be notified and a temperature survey utilizing an electronic type temperature survey with surface log readout will be used or a cement bond log shall be run to verify the top of the cement. Temperature survey will be run a minimum of six hours after pumping cement and ideally between 8-10 hours after completing the cement job.
 - b. **Wait on cement (WOC) time for a primary cement job is to include the lead cement slurry.**
 - c. Wait on cement (WOC) time for a remedial job will be a minimum of 4 hours after bringing cement to surface or 500 pounds compressive strength, whichever is greater.
 - d. If cement falls back, remedial cementing will be done prior to drilling out that string.
2. The minimum required fill of cement behind the 9-5/8 inch intermediate casing is:
 - ☒ Cement to surface. If cement does not circulate see B.1.a, c-d above. **Excess calculates to 20% - Additional cement may be required.**

Centralizers required on horizontal leg, must be type for horizontal service and a minimum of one every other joint.

3. The minimum required fill of cement behind the 5-1/2 inch production casing is:

- ☒ Cement should tie-back at least 500 feet into previous casing string. Operator shall provide method of verification. **Excess calculates to 17% - Additional cement may be required.**

4. If hardband drill pipe is rotated inside casing, returns will be monitored for metal. If metal is found in samples, drill pipe will be pulled and rubber protectors which have a larger diameter than the tool joints of the drill pipe will be installed prior to continuing drilling operations.

C. PRESSURE CONTROL

1. All blowout preventer (BOP) and related equipment (BOPE) shall comply with well control requirements as described in Onshore Oil and Gas Order No. 2 and API RP 53 Sec. 17.

2. Variance approved to use flex line from BOP to choke manifold. Check condition of flexible line from BOP to choke manifold, replace if exterior is damaged or if line fails test. Line to be as straight as possible with no hard bends and is to be anchored according to Manufacturer's requirements. The flexible hose can be exchanged with a hose of equal size and equal or greater pressure rating. **Anchor requirements, specification sheet and hydrostatic pressure test certification matching the hose in service, to be onsite for review. These documents shall be posted in the company man's trailer and on the rig floor.** If the BLM inspector questions the straightness of the hose, a BLM engineer will be contacted and will review in the field or via picture supplied by inspector to determine if changes are required (operator shall expect delays if this occurs).

3. Minimum working pressure of the blowout preventer (BOP) and related equipment (BOPE) required for drilling below the surface casing shoe shall be **2000 (2M) psi (Installing a 5M, testing to 2,000 psi).**

- a. **For surface casing only:** If the BOP/BOPE is to be tested against casing, the wait on cement (WOC) time for that casing is to be met (see WOC statement at start of casing section). Independent service company required.

4. Minimum working pressure of the blowout preventer (BOP) and related equipment (BOPE) required for drilling below the 9-5/8 intermediate casing shoe shall be **3000 (3M) psi (Installing a 5M, testing to 3,000 psi).**

5. The appropriate BLM office shall be notified a minimum of 4 hours in advance for a representative to witness the tests.
- a. In a water basin, for all casing strings utilizing slips, these are to be set as soon as the crew and rig are ready and any fallback cement remediation has been done. The casing cut-off and BOP installation can be initiated four hours after installing the slips, which will be approximately six hours after bumping the plug. For those casing strings not using slips, the minimum wait time before cut-off is eight hours after bumping the plug. BOP/BOPE testing can begin after cut-off or once cement reaches 500 psi compressive strength (including lead when specified), whichever is greater. However, if the float does not hold, cut-off cannot be initiated until cement reaches 500 psi compressive strength (including lead when specified).
 - b. The tests shall be done by an independent service company utilizing a test plug **not a cup or J-packer**. The operator also has the option of utilizing an independent tester to test without a plug (i.e. against the casing) pursuant to Onshore Order 2 with the pressure not to exceed 70% of the burst rating for the casing. Any test against the casing must meet the WOC time for water basin (18 hours) or potash (24 hours) or 500 pounds compressive strength, whichever is greater, prior to initiating the test (see casing segment as lead cement may be critical item).
 - c. The test shall be run on a 5000 psi chart for a 2-3M BOP/BOP, on a 10000 psi chart for a 5M BOP/BOPE and on a 15000 psi chart for a 10M BOP/BOPE. If a linear chart is used, it shall be a one hour chart. A circular chart shall have a maximum 2 hour clock. If a twelve hour or twenty-four hour chart is used, tester shall make a notation that it is run with a two hour clock.
 - d. The results of the test shall be reported to the appropriate BLM office.
 - e. All tests are required to be recorded on a calibrated test chart. **A copy of the BOP/BOPE test chart and a copy of independent service company test will be submitted to the appropriate BLM office.**
 - f. The BOP/BOPE test shall include a low pressure test from 250 to 300 psi. The test will be held for a minimum of 10 minutes if test is done with a test plug and 30 minutes without a test plug. This test shall be performed prior to the test at full stack pressure.

D. DRILL STEM TEST

If drill stem tests are performed, Onshore Order 2.III.D shall be followed.

E. WASTE MATERIAL AND FLUIDS

All waste (i.e. drilling fluids, trash, salts, chemicals, sewage, gray water, etc.) created as a result of drilling operations and completion operations shall be safely contained and disposed of properly at a waste disposal facility. No waste material or fluid shall be disposed of on the well location or surrounding area.

Porto-johns and trash containers will be on-location during fracturing operations or any other crew-intensive operations.

JAM 050114

VIII. PRODUCTION (POST DRILLING)

A. WELL STRUCTURES & FACILITIES

Placement of Production Facilities

Production facilities should be placed on the well pad to allow for maximum interim recontouring and revegetation of the well location.

Exclosure Netting (Open-top Tanks)

Immediately following active drilling or completion operations, the operator will take actions necessary to prevent wildlife and livestock access, including avian wildlife, to all open-topped tanks that contain or have the potential to contain salinity sufficient to cause harm to wildlife or livestock, hydrocarbons, or Resource Conservation and Recovery Act of 1976-exempt hazardous substances. At a minimum, the operator will net, screen, or cover open-topped tanks to exclude wildlife and livestock and prevent mortality. If the operator uses netting, the operator will cover and secure the open portion of the tank to prevent wildlife entry. The operator will net, screen, or cover the tanks until the operator removes the tanks from the location or the tanks no longer contain substances that could be harmful to wildlife or livestock. Use a maximum netting mesh size of 1 ½ inches. The netting must not be in contact with fluids and must not have holes or gaps.

Chemical and Fuel Secondary Containment and Exclosure Screening

The operator will prevent all hazardous, poisonous, flammable, and toxic substances from coming into contact with soil and water. At a minimum, the operator will install and maintain an impervious secondary containment system for any tank or barrel containing hazardous, poisonous, flammable, or toxic substances sufficient to contain the contents of the tank or barrel and any drips, leaks, and anticipated precipitation. The operator will dispose of fluids within the containment system that do not meet applicable state or U. S. Environmental Protection Agency livestock water standards in accordance with state law; the operator must not drain the fluids to the soil or ground. The operator will design, construct, and maintain all secondary containment systems to prevent wildlife and livestock exposure to harmful substances. At a minimum, the operator will install effective wildlife and livestock exclosure systems such as fencing, netting, expanded metal mesh, lids, and grate covers. Use a maximum netting mesh size of 1 ½ inches.

Open-Vent Exhaust Stack Exclosures

The operator will construct, modify, equip, and maintain all open-vent exhaust stacks on production equipment to prevent birds and bats from entering, and to discourage perching, roosting, and nesting. (*Recommended exclosure structures on open-vent exhaust stacks are in the shape of a cone.*) Production equipment includes, but may not be limited to, tanks, heater-treaters, separators, dehydrators, flare stacks, in-line units, and compressor mufflers.

Containment Structures

Proposed production facilities such as storage tanks and other vessels will have a secondary containment structure that is constructed to hold the capacity of 1.5 times the

largest tank, plus freeboard to account for precipitation, unless more stringent protective requirements are deemed necessary.

Painting Requirement

All above-ground structures including meter housing that are not subject to safety requirements shall be painted a flat non-reflective paint color, **Shale Green** from the BLM Standard Environmental Color Chart (CC-001: June 2008).

B. PIPELINES

STANDARD STIPULATIONS FOR SURFACE INSTALLED PIPELINES

A copy of the application (Grant, Sundry Notice, APD) and attachments, including stipulations, survey plat and/or map, will be on location during construction. BLM personnel may request to you a copy of your permit during construction to ensure compliance with all stipulations.

Holder agrees to comply with the following stipulations to the satisfaction of the Authorized Officer:

1. The holder shall indemnify the United States against any liability for damage to life or property arising from the occupancy or use of public lands under this grant.
2. The holder shall comply with all applicable Federal laws and regulations existing or hereafter enacted or promulgated. In any event, the holder shall comply with the Toxic Substances Control Act of 1976 as amended, 15 USC 2601 et seq. (1982) with regards to any toxic substances that are used, generated by or stored on the right-of-way or on facilities authorized under this right-of-way grant. (See 40 CFR, Part 702-799 and especially, provisions on polychlorinated biphenyls, 40 CFR 761.1-761.193.) Additionally, any release of toxic substances (leaks, spills, etc.) in excess of the reportable quantity established by 40 CFR, Part 117 shall be reported as required by the Comprehensive Environmental Response, Compensation, and Liability Act, section 102b. A copy of any report required or requested by any Federal agency or State government as a result of a reportable release or spill of any toxic substances shall be furnished to the authorized officer concurrent with the filing of the reports to the involved Federal agency or State government.
3. The holder agrees to indemnify the United States against any liability arising from the release of any hazardous substance or hazardous waste (as these terms are defined in the Comprehensive Environmental Response, Compensation and Liability Act of 1980, 42 U.S.C. 9601, et seq. or the Resource Conservation and Recovery Act, 42 U.S.C. 6901, et seq.) on the Right-of-Way (unless the release or threatened release is wholly unrelated to activity of the Right-of-Way holder's activity on the Right-of-Way), or resulting from the activity of the Right-of-Way holder on the Right-of-Way. This agreement applies without regard to whether a release is caused by the holder, its agent, or unrelated third parties.

4. The holder shall be liable for damage or injury to the United States to the extent provided by 43 CFR Sec. 2883.1-4. The holder shall be held to a standard of strict liability for damage or injury to the United States resulting from pipe rupture, fire, or spills caused or substantially aggravated by any of the following within the right-of-way or permit area:

- a. Activities of the holder including, but not limited to construction, operation, maintenance, and termination of the facility.
- b. Activities of other parties including, but not limited to:
 - (1) Land clearing.
 - (2) Earth-disturbing and earth-moving work.
 - (3) Blasting.
 - (4) Vandalism and sabotage.
- c. Acts of God.

The maximum limitation for such strict liability damages shall not exceed one million dollars (\$1,000,000) for any one event, and any liability in excess of such amount shall be determined by the ordinary rules of negligence of the jurisdiction in which the damage or injury occurred.

This section shall not impose strict liability for damage or injury resulting primarily from an act of war or from the negligent acts or omissions of the United States.

5. If, during any phase of the construction, operation, maintenance, or termination of the pipeline, any oil, salt water, or other pollutant should be discharged from the pipeline system, impacting Federal lands, the control and total removal, disposal, and cleaning up of such oil, salt water, or other pollutant, wherever found, shall be the responsibility of the holder, regardless of fault. Upon failure of the holder to control, dispose of, or clean up such discharge on or affecting Federal lands, or to repair all damages resulting therefrom, on the Federal lands, the Authorized Officer may take such measures as he deems necessary to control and clean up the discharge and restore the area, including, where appropriate, the aquatic environment and fish and wildlife habitats, at the full expense of the holder. Such action by the Authorized Officer shall not relieve the holder of any responsibility as provided herein.

6. All construction and maintenance activity will be confined to the authorized right-of-way width of 20 feet. If the pipeline route follows an existing road or buried pipeline right-of-way, the surface pipeline must be installed no farther than 10 feet from the edge of the road or buried pipeline right-of-way. If existing surface pipelines prevent this distance, the proposed surface pipeline must be installed immediately adjacent to the outer surface pipeline. All construction and maintenance activity will be confined to existing roads or right-of-ways.

7. No blading or clearing of any vegetation will be allowed unless approved in writing by the Authorized Officer.

8. The holder shall install the pipeline on the surface in such a manner that will minimize suspension of the pipeline across low areas in the terrain. In hummocky or dune areas, the pipeline will be "snaked" around hummocks and dunes rather than suspended across these features.

9. The pipeline shall be buried with a minimum of 24 inches under all roads, "two-tracks," and trails. Burial of the pipe will continue for 20 feet on each side of each crossing. The condition of the road, upon completion of construction, shall be returned to at least its former state with no bumps or dips remaining in the road surface.

10. The holder shall minimize disturbance to existing fences and other improvements on public lands. The holder is required to promptly repair improvements to at least their former state. Functional use of these improvements will be maintained at all times. The holder will contact the owner of any improvements prior to disturbing them. When necessary to pass through a fence line, the fence shall be braced on both sides of the passageway prior to cutting of the fence. No permanent gates will be allowed unless approved by the Authorized Officer.

11. In those areas where erosion control structures are required to stabilize soil conditions, the holder will install such structures as are suitable for the specific soil conditions being encountered and which are in accordance with sound resource management practices.

12. Excluding the pipe, all above-ground structures not subject to safety requirement shall be painted by the holder to blend with the natural color of the landscape. The paint used shall be a color which simulates "Standard Environmental Colors" – **Shale Green**, Munsell Soil Color No. 5Y 4/2; designated by the Rocky Mountain Five State Interagency Committee.

13. The pipeline will be identified by signs at the point of origin and completion of the right-of-way and at all road crossings. At a minimum, signs will state the holder's name, BLM serial number, and the product being transported. Signs will be maintained in a legible condition for the life of the pipeline.

14. The holder shall not use the pipeline route as a road for purposes other than routine maintenance as determined necessary by the Authorized Officer in consultation with the holder. The holder will take whatever steps are necessary to ensure that the pipeline route is not used as a roadway.

15. Any cultural and/or paleontological resource (historic or prehistoric site or object) discovered by the holder, or any person working on his behalf, on public or Federal land shall be immediately reported to the authorized officer. Holder shall suspend all operations in the immediate area of such discovery until written authorization to proceed is issued by the authorized officer. An evaluation of the discovery will be made by the authorized officer to determine appropriate cultural or scientific values. The holder will

be responsible for the cost of evaluation and any decision as to proper mitigation measures will be made by the authorized officer after consulting with the holder.

16. The operator shall be held responsible if noxious weeds become established within the areas of operations. Weed control shall be required on the disturbed land where noxious weeds exist, which includes the roads, powerline corridor, and adjacent land affected by the establishment of weeds due to this action. The operator shall consult with the Authorized Officer for acceptable weed control methods, which include following EPA and BLM requirements and policies.

17. Surface pipelines must be less than or equal to 4 inches and a working pressure below 125 psi.

C. ELECTRIC LINES

STANDARD STIPULATIONS FOR OVERHEAD ELECTRIC DISTRIBUTION LINES

A copy of the grant and attachments, including stipulations, survey plat and/or map, will be on location during construction. BLM personnel may request to you a copy of your permit during construction to ensure compliance with all stipulations.

Holder agrees to comply with the following stipulations to the satisfaction of the Authorized Officer:

1. The holder shall indemnify the United States against any liability for damage to life or property arising from the occupancy or use of public lands under this grant.

2. The holder shall comply with all applicable Federal laws and regulations existing or hereafter enacted or promulgated. In any event, the holder shall comply with the Toxic Substances Control Act of 1976 as amended, 15 USC 2601 et seq. (1982) with regards to any toxic substances that are used, generated by or stored on the right-of-way or on facilities authorized under this right-of-way grant. (See 40 CFR, Part 702-799 and especially, provisions on polychlorinated biphenyls, 40 CFR 761.1-761.193.) Additionally, any release of toxic substances (leaks, spills, etc.) in excess of the reportable quantity established by 40 CFR, Part 117 shall be reported as required by the Comprehensive Environmental Response, Compensation, and Liability Act, section 102b. A copy of any report required or requested by any Federal agency or State government as a result of a reportable release or spill of any toxic substances shall be furnished to the authorized officer concurrent with the filing of the reports to the involved Federal agency or State government.

3. The holder agrees to indemnify the United States against any liability arising from the release of any hazardous substance or hazardous waste (as these terms are defined in the Comprehensive Environmental Response, Compensation and Liability Act of 1980, 42 U.S.C. 9601, et seq. or the Resource Conservation and Recovery Act, 42 U.S.C. 6901, et

seq.) on the Right-of-Way (unless the release or threatened release is wholly unrelated to the Right-of-Way holder's activity on the Right-of-Way), or resulting from the activity of the Right-of-Way holder on the Right-of-Way. This agreement applies without regard to whether a release is caused by the holder, its agent, or unrelated third parties.

4. There will be no clearing or blading of the right-of-way unless otherwise agreed to in writing by the Authorized Officer.

5. Power lines shall be constructed and designed in accordance to standards outlined in "Suggested Practices for Avian Protection on Power lines: The State of the Art in 2006" Edison Electric Institute, APLIC, and the California Energy Commission 2006 . The holder shall assume the burden and expense of proving that pole designs not shown in the above publication deter raptor perching, roosting, and nesting. Such proof shall be provided by a raptor expert approved by the Authorized Officer. The BLM reserves the right to require modification or additions to all powerline structures placed on this right-of-way, should they be necessary to ensure the safety of large perching birds. Such modifications and/or additions shall be made by the holder without liability or expense to the United States.

Raptor deterrence will consist of but not limited to the following: triangle perch discouragers shall be placed on each side of the cross arms and a nonconductive perching deterrence shall be placed on all vertical poles that extend past the cross arms.

6. The holder shall minimize disturbance to existing fences and other improvements on public lands. The holder is required to promptly repair improvements to at least their former state. Functional use of these improvements will be maintained at all times. The holder will contact the owner of any improvements prior to disturbing them. When necessary to pass through a fence line, the fence shall be braced on both sides of the passageway prior to cutting the fence. No permanent gates will be allowed unless approved by the Authorized Officer.

7. The BLM serial number assigned to this authorization shall be posted in a permanent, conspicuous manner where the power line crosses roads and at all serviced facilities. Numbers will be at least two inches high and will be affixed to the pole nearest the road crossing and at the facilities served.

8. Upon cancellation, relinquishment, or expiration of this grant, the holder shall comply with those abandonment procedures as prescribed by the Authorized Officer.

9. All surface structures (poles, lines, transformers, etc.) shall be removed within 180 days of abandonment, relinquishment, or termination of use of the serviced facility or facilities or within 180 days of abandonment, relinquishment, cancellation, or expiration of this grant, whichever comes first. This will not apply where the power line extends service to an active, adjoining facility or facilities.

10. Any cultural and/or paleontological resource (historic or prehistoric site or object) discovered by the holder, or any person working on his behalf, on public or Federal land shall be immediately reported to the Authorized Officer. Holder shall suspend all operations in the immediate area of such discovery until written authorization to proceed is issued by the Authorized Officer. An evaluation of the discovery will be made by the Authorized Officer to determine appropriate actions to prevent the loss of significant cultural or scientific values. The holder will be responsible for the cost of evaluation and any decision as to proper mitigation measures will be made by the Authorized Officer after consulting with the holder.

11. Special Stipulations:

- For reclamation remove poles, lines, transformer, etc. and dispose of properly.
- Fill in any holes from the poles removed.

IX. INTERIM RECLAMATION

During the life of the development, all disturbed areas not needed for active support of production operations should undergo interim reclamation in order to minimize the environmental impacts of development on other resources and uses.

Within six (6) months of well completion, operators should work with BLM surface management specialists (Jim Amos: 575-234-5909) to devise the best strategies to reduce the size of the location. Interim reclamation should allow for remedial well operations, as well as safe and efficient removal of oil and gas.

During reclamation, the removal of caliche is important to increasing the success of revegetating the site. Removed caliche that is free of contaminants may be used for road repairs, fire walls or for building other roads and locations. In order to operate the well or complete workover operations, it may be necessary to drive, park and operate on restored interim vegetation within the previously disturbed area. Disturbing revegetated areas for production or workover operations will be allowed. If there is significant disturbance and loss of vegetation, the area will need to be revegetated. Communicate with the appropriate BLM office for any exceptions/exemptions if needed.

All disturbed areas after they have been satisfactorily prepared need to be reseeded with the seed mixture provided below.

Upon completion of interim reclamation, the operator shall submit a Sundry Notices and Reports on Wells, Subsequent Report of Reclamation (Form 3160-5).

X. FINAL ABANDONMENT & RECLAMATION

At final abandonment, well locations, production facilities, and access roads must undergo "final" reclamation so that the character and productivity of the land are restored.

Earthwork for final reclamation must be completed within six (6) months of well plugging. All pads, pits, facility locations and roads must be reclaimed to a satisfactory revegetated, safe, and stable condition, unless an agreement is made with the landowner or BLM to keep the road and/or pad intact.

After all disturbed areas have been satisfactorily prepared, these areas need to be revegetated with the seed mixture provided below. Seeding should be accomplished by drilling on the contour whenever practical or by other approved methods. Seeding may need to be repeated until revegetation is successful, as determined by the BLM.

Operators shall contact a BLM surface protection specialist prior to surface abandonment operations for site specific objectives (Jim Amos: 575-234-5909).

Seed Mixture 2, for Sandy Sites

The holder shall seed all disturbed areas with the seed mixture listed below. The seed mixture shall be planted in the amounts specified in pounds of pure live seed (PLS)* per acre. There shall be no primary or secondary noxious weeds in the seed mixture. Seed will be tested and the viability testing of seed will be done in accordance with State law (s) and within nine (9) months prior to purchase. Commercial seed will be either certified or registered seed. The seed container will be tagged in accordance with State law(s) and available for inspection by the authorized officer.

Seed will be planted using a drill equipped with a depth regulator to ensure proper depth of planting where drilling is possible. The seed mixture will be evenly and uniformly planted over the disturbed area (smaller/heavier seeds have a tendency to drop the bottom of the drill and are planted first). The holder shall take appropriate measures to ensure this does not occur. Where drilling is not possible, seed will be broadcast and the area shall be raked or chained to cover the seed. When broadcasting the seed, the pounds per acre are to be doubled. The seeding will be repeated until a satisfactory stand is established as determined by the authorized officer. Evaluation of growth will not be made before completion of at least one full growing season after seeding.

Species to be planted in pounds of pure live seed* per acre:

<u>Species</u>	<u>lb/acre</u>
Sand dropseed (<i>Sporobolus cryptandrus</i>)	1.0
Sand love grass (<i>Eragrostis trichodes</i>)	1.0
Plains bristlegrass (<i>Setaria macrostachya</i>)	2.0

*Pounds of pure live seed:

Pounds of seed x percent purity x percent germination = pounds pure live seed