

DISTRICT I
1035 N. FRENCH DR., BOBBS, NM 88240
Phone: (505) 393-5161 Fax: (505) 393-0720

DISTRICT II
811 S. FIRST ST., ARTESIA, NM 88210
Phone: (505) 748-1223 Fax: (505) 748-9770

DISTRICT III
1000 RIO BRAZOS RD., AZTEC, NM 87410
Phone: (505) 334-6170 Fax: (505) 334-6170

DISTRICT IV
1220 S. ST. FRANCIS DR., SANTA FE, NM 87503
Phone: (505) 476-3480 Fax: (505) 476-3482

State of New Mexico
Energy, Minerals & Natural Resources Department
OIL CONSERVATION DIVISION
1220 SOUTH ST. FRANCIS DR.
Santa Fe, New Mexico 87505

Form C-102
Revised August 1, 2011
Submit one copy to appropriate
District Office

AMENDED REPORT
location change

WELL LOCATION AND ACREAGE DEDICATION PLAT

API Number 30-015-41924	Pool Code 30216	Pool Name Hay Hollow; Bone Spring, North
Property Code 40313	Property Name MYOX 8 STATE	Well Number 4H
OGRID No. 229137	Operator Name COG OPERATING, LLC	Elevation 3113.5

Surface Location

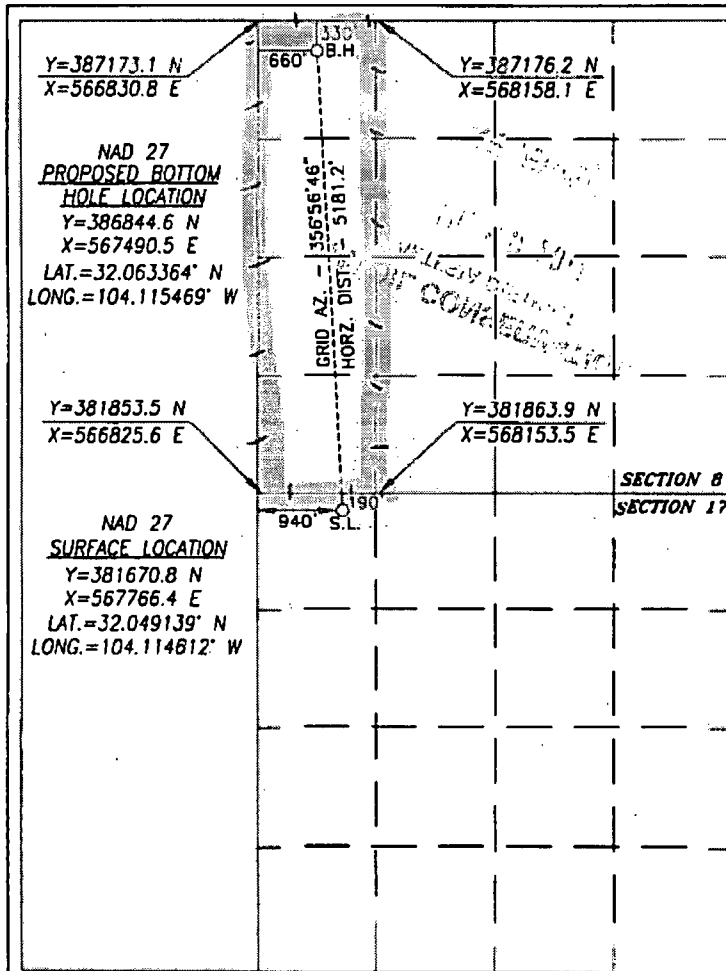
UL or lot No.	Section	Township	Range	Lot Idn	Feet from the	North/South line	Feet from the	East/West line	County
D	17	26-S	28-E		190	NORTH	940	WEST	EDDY

Bottom Hole Location If Different From Surface

UL or lot No.	Section	Township	Range	Lot Idn	Feet from the	North/South line	Feet from the	East/West line	County
D	8	26-S	28-E		330	NORTH	660	WEST	EDDY

Dedicated Acres 160	Joint or Infill	Consolidation Code	Order No.
------------------------	-----------------	--------------------	-----------

NO ALLOWABLE WILL BE ASSIGNED TO THIS COMPLETION UNTIL ALL INTERESTS HAVE BEEN CONSOLIDATED
OR A NON-STANDARD UNIT HAS BEEN APPROVED BY THE DIVISION



OPERATOR CERTIFICATION

I hereby certify that the information herein is true and complete to the best of my knowledge and belief, and that this organization either owns a working interest or unleased mineral interest in the land including the proposed bottom hole location or has a right to drill this well at this location pursuant to a contract with an owner of such mineral or working interest, or to a voluntary pooling agreement or a compulsory pooling order heretofore entered by the division.

Mayte Reyes 7-29-14
Signature Date

Mayte Reyes

Printed Name

mreyes1@concho.com

E-mail Address

SURVEYOR CERTIFICATION

I hereby certify that the well location shown on this plat was plotted from field notes of actual surveys made by me or under my supervision, and that the same is true and correct to the best of my belief.

JULY 24, 2014

Date of Survey

Signature & Seal of Professional Surveyor



Chad Harcrow 7/28/14
Certificate No. CHAD HARCROW 17777
W.O. 14-506 DRAWN BY: J.C.