

**DISTRICT I**  
1625 N. French Dr., Hobbs, NM 88240  
Phone (575) 393-6161 Fax: (575) 393-0720

**DISTRICT II**  
611 S. First St., Artesia, NM 88210  
Phone (575) 746-1283 Fax: (575) 746-9720

**DISTRICT III**  
1000 Rio Brazos Rd., Aztec, NM 87410  
Phone (505) 354-6178 Fax: (505) 354-6170

**DISTRICT IV**  
1220 S. St. Francis Dr., Santa Fe, NM 87505  
Phone (505) 476-3460 Fax: (505) 476-3462

State of New Mexico  
Energy, Minerals and Natural Resources Department

Form C-102  
Revised August 1, 2011

Submit one copy to appropriate  
District Office

**OIL CONSERVATION DIVISION**

1220 South St. Francis Dr.  
Santa Fe, New Mexico 87505

**WELL LOCATION AND ACREAGE DEDICATION PLAT**

☐ AMENDED REPORT

API Number <sup>15</sup> 30-025-42090	Pool Code 49622	Pool Name Parkway; Bone Spring
Property Code 40409	Property Name Perazzi, DA FEDERAL	Well Number 1H
GRID No. 14744	Operator Name MEWBOURNE OIL COMPANY	Elevation 3287'

**Surface Location**

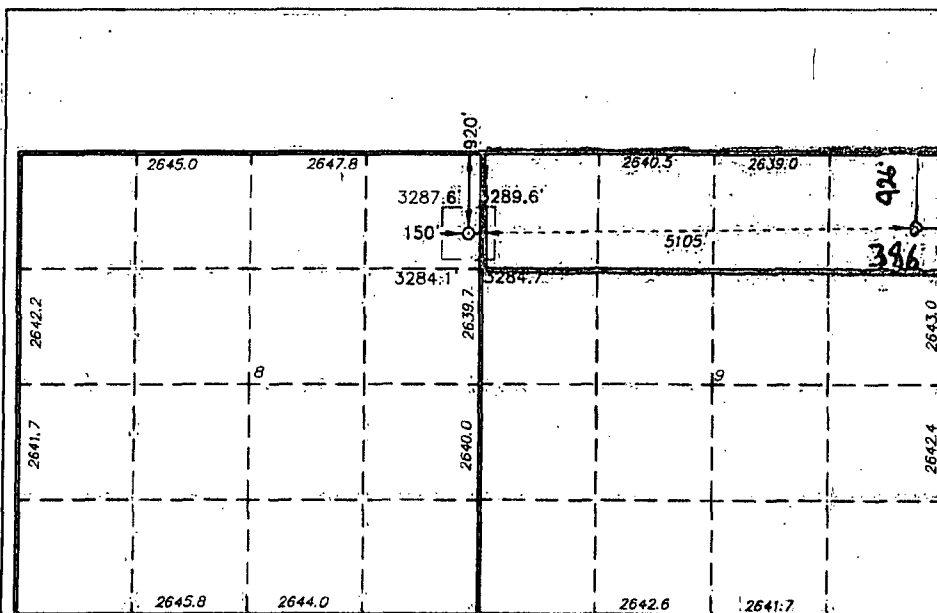
UL or lot No.	Section	Township	Range	Lot Idn	Feet from the	North/South line	Feet from the	East/West line	County
A	8	20 S	29 E		920	NORTH	150	EAST	EDDY

**Bottom Hole Location If Different From Surface**

UL or lot No.	Section	Township	Range	Lot Idn	Feet from the	North/South line	Feet from the	East/West line	County
A	9	20 S	29 E		926	NORTH	386	EAST	EDDY

Dedicated Acres 160	Joint or Infill	Consolidation Code	Order No.
------------------------	-----------------	--------------------	-----------

NO ALLOWABLE WILL BE ASSIGNED TO THIS COMPLETION UNTIL ALL INTERESTS HAVE BEEN CONSOLIDATED  
OR A NON-STANDARD UNIT HAS BEEN APPROVED BY THE DIVISION



**SURFACE LOCATION**  
Lat - N 32°35'33.29"  
Long - W 104°05'18.94"  
NMSPCE- N 579379.159  
E 575375.478  
(NAD-27)

**PROPOSED BOTTOM HOLE LOCATION**  
Lat - N 32°35'34.10"  
Long - W 104°04'19.29"  
NMSPCE- N 579473.326  
E 580478.778  
(NAD-27)

**OPERATOR CERTIFICATION**

I hereby certify that the information contained herein is true and complete to the best of my knowledge and belief, and that this organization either owns a working interest or unleased mineral interest in the land including the proposed bottom hole location or has a right to drill this well at this location pursuant to a contract with an owner of such a mineral or working interest, or to a voluntary pooling agreement or a compulsory pooling order heretofore entered by the division.

Signature: Jackie Lathan  
Printed Name: Jackie Lathan  
Date: 6/16/14

Email Address

**SURVEYOR CERTIFICATION**

I hereby certify that the well location shown on this plat was plotted from field notes of actual surveys made by me or under my supervision, and that the same is true and correct to the best of my belief.

Date: September 12, 2012  
Signature: Gary L. Jones  
Professional Surveyor  
Certificate No. 7977

Certificate No. Gary L. Jones 7977  
BASIN SURVEYS 27305