

UNORTHODOX

OCD Artesia

ATS-14-428

Form 3160-3
(March 2012)

LOCATION

HIGH CAVEKARST

UNITED STATES
DEPARTMENT OF THE INTERIOR
BUREAU OF LAND MANAGEMENT

APPLICATION FOR PERMIT TO DRILL OR REENTER

FORM APPROVED
OMB No. 1004-0137
Expires October 31, 2014705
9-22-141a. Type of work: ☒ DRILL ☐ REENTER1b. Type of Well: ☒ Oil Well ☐ Gas Well ☐ Other ☒ Single Zone ☐ Multiple Zone

2. Name of Operator Mewbourne Oil Company

3a. Address PO Box 5270
Hobbs, NM 882413b. Phone No. (include area code)
575-393-5905

4. Location of Well (Report location clearly and in accordance with any State requirements.)

At surface 2320' FNL & 170' FWL, Sec 17 T20S R29E

At proposed prod. zone 2100' FNL & 330' FEL, Sec 17 T20S R29E

14. Distance in miles and direction from nearest town or post office*

16 miles NE of Carlsbad, NM

15. Distance from proposed* 170'
location to nearest
property or lease line, ft.
(Also to nearest drig. unit line, if any)16. No. of acres in lease
2,494.4117. Spacing Unit dedicated to this well
16018. Distance from proposed location* 1135' NAVAJO AA #002
to nearest well, drilling, completed,
applied for, on this lease, ft.19. Proposed Depth
12,300' - MD ☒
7,834' - TVD20. BLM/BIA Bond No. on file
NM-1693 Nationwide, NMB-00091921. Elevations (Show whether DF, KDB, RT, GL, etc.)
3274'-GL22. Approximate date work will start*
04/21/201423. Estimated duration
60 Days

24. Attachments

The following, completed in accordance with the requirements of Onshore Oil and Gas Order No. 1, must be attached to this form:

- Well plat certified by a registered surveyor.
- A Drilling Plan.
- A Surface Use Plan (if the location is on National Forest System Lands, the SUPO must be filed with the appropriate Forest Service Office).
- Bond to cover the operations unless covered by an existing bond on file (see Item 20 above).
- Operator certification
- Such other site specific information and/or plans as may be required by the BLM.

25. Signature

Bradley Bishop

Name (Printed/Typed)

BRADLEY BISHOP

Date

3-6-14

Title

Approved by (Signature)

Steve Caffey

Name (Printed/Typed)

Date

SEP 18 2014

Title

FIELD MANAGER

Office

CARLSBAD FIELD OFFICE

Application approval does not warrant or certify that the applicant holds legal or equitable title to those rights in the subject lease which would entitle the applicant to conduct operations thereon.

Conditions of approval, if any, are attached.

APPROVAL FOR TWO YEARS

Title 18 U.S.C. Section 1001 and Title 43 U.S.C. Section 1212, make it a crime for any person knowingly and willfully to make to any department or agency of the United States any false, fictitious or fraudulent statements or representations as to any matter within its jurisdiction.

(Continued on page 2)

*(Instructions on page 2)

NM OIL CONSERVATION

ARTESIA DISTRICT

SEP 22 2014

RECEIVED

SEE ATTACHED FOR
CONDITIONS OF APPROVALApproval Subject to General Requirements
& Special Stipulations Attached

Capitan Controlled Water Basin

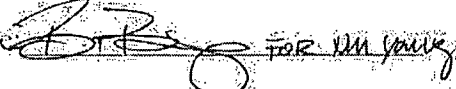
Mewbourne Oil Company

PO Box 5270
Hobbs, NM 88241
(575) 393-5905

I hereby certify that I, or someone under my direct supervision, have inspected the drill site and access route proposed herein; that I am familiar with the conditions which currently exist; that I have full knowledge of State and Federal laws applicable to this operation; that the statements made in this APD package are, to the best of my knowledge, true and correct; and that the work associated with the operations proposed herein will be performed in conformity with this APD package and the terms and conditions under which it is approved. I also certify that I, or the company I represent, am responsible for the operations conducted under this application. These statements are subject to the provisions of 18 U.S.C. 1001 for the filing of false statements.

Executed this 6 day of March, 2014.

Name: NM Young

Signature:  for NM Young

Position Title: Hobbs District Manager

Address: PO Box 5270, Hobbs NM 88241

Telephone: 575-393-5905

E-mail: myoung@mewbourne.com

District I
1623 N. French Dr., Hobbs, NM 88240
Phone: (575) 393-6161 Fax: (575) 393-0720
District II
811 S. Ford St., Artesia, NM 88210
Phone: (575) 749-1283 Fax: (575) 749-9720
District III
1000 Rio Brazos Road, Aztec, NM 87410
Phone: (505) 334-6178 Fax: (505) 334-6170
District IV
1220 S. St. Francis Dr., Santa Fe, NM 87505
Phone: (505) 476-3460 Fax: (505) 476-3462

State of New Mexico
Energy, Minerals & Natural Resources Department
OIL CONSERVATION DIVISION
1220 South St. Francis Dr.
Santa Fe, NM 87505

Form C-102
Revised August 1, 2011
Submit one copy to appropriate
District Office

☐ AMENDED REPORT

WELL LOCATION AND ACREAGE DEDICATION PLAT

API Number 30-015-42664		Pool Code 52805		Well Name WC-015 6-04 Russell Bone Spring		Well Number S2029200; BS	
Property Code 313 720		Property Name 98015		Property Name GLOCK 17 2EH Fed		Well Number 1H	
GRID No. 14744		Operator Name MEWBOURNE OIL COMPANY		Operator Name		Elevation 3274'	

Surface Location

UL or lot no.	Section	Township	Range	Lot Idn	Feet from the	North/South line	Feet from the	East/West line	County
E	17	20-S	29-E		2320	NORTH	170	WEST	EDDY

Bottom Hole Location If Different From Surface

UL or lot no.	Section	Township	Range	Lot Idn	Feet from the	North/South line	Feet from the	East/West line	County
H	17	20-S	29-E		2100	North	330	EAST	EDDY
Dedicated Acres 16.0		Joint or Interest		Consolidation Code		Order No.			

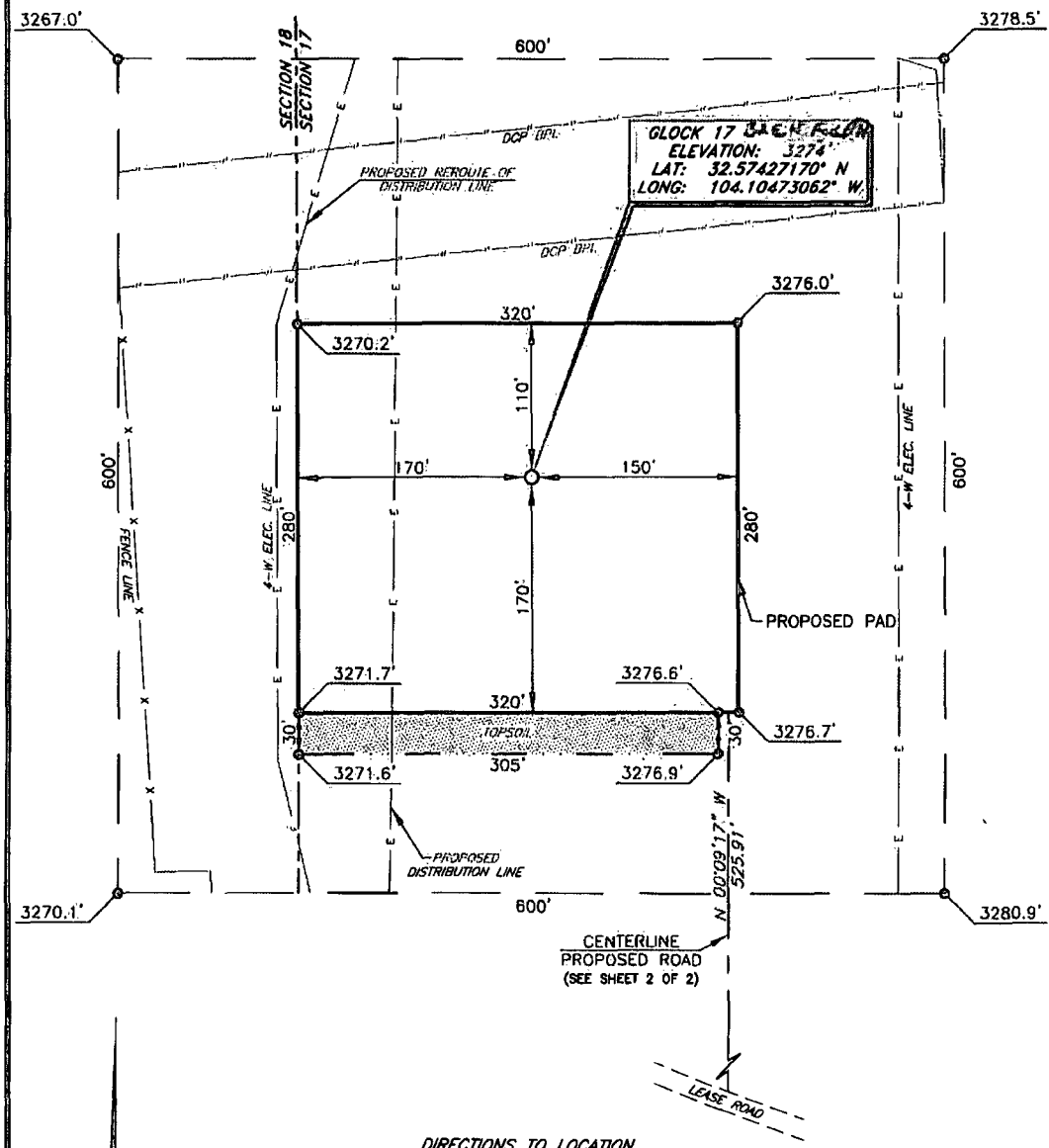
No allowable will be assigned to this completion until all interests have been consolidated or a non-standard unit has been approved by the division.

<p>Project Area</p> <p>Producing Area</p> <p>Well Path</p> <p>GEODETIC DATA NAD 27 GRID - NM EAST SURFACE LOCATION N 452207.1 E 670420.5 LAT: 32.57427170° N LONG: 104.10873062° W</p>		<p>"OPERATOR CERTIFICATION" I hereby certify that the information contained herein is true and complete to the best of my knowledge and belief, and that this organization either owns a working interest or undivided mineral interest in the land including the proposed bottom hole location or has a right to drill this well at this location pursuant to a contract with an owner of such a mineral or working interest, or to a voluntary pooling agreement or a compulsory pooling order heretofore entered by the division.</p> <p>Signature <i>Brady Bish</i> Date 3-6-14 BRADY BISHOP Printed Name Email Address</p>	
<p>DETAIL "A"</p> <p>3267.0' 600' 3278.5'</p> <p>3270.1' 3280.9'</p> <p>CORNER DATA NAD 27 GRID - NM EAST A: FND BRASS CAP 1916 N 569743.4 - E 570257.5 B: FND BRASS CAP 1916 N 575027.1 - E 570245.1 C: FND BRASS CAP 1916 N 575024.9 - E 572890.7 D: FND BRASS CAP 1916 N 575023.4 - E 575534.7 E: FND BRASS CAP 1916 N 572382.0 - E 575541.2 F: FND BRASS CAP 1916 N 569737.0 - E 575547.3 G: FND BRASS CAP 1916 N 569740.4 - E 572901.8</p>		<p>"SURVEYOR CERTIFICATION" I hereby certify that the well location shown on this plat was plotted from field notes of actual surveys made by me or under my supervision, and that the same is true and correct to the best of my belief.</p> <p>11/1/13 Date of Survey Signature and Seal of Professional Surveyor <i>Robert M. Howett</i> 19680 Certificate Number</p>	

Exhibit 3

MEWBOURNE OIL COMPANY

Glock 17 ~~BAEN~~ Fed #1H
(2320' FNL & 170' FWL)
Section 17, T-20-S, R-29-E,
N. M. P. M., Eddy Co., New Mexico



DIRECTIONS TO LOCATION

From the intersection of CR-238 (Burton Flat) and CR-243 (Magnum):

Go East on CR-238 approx. 0.8 mile to lease road.

Turn left and go North approx. 0.5 mile to lease road.

Turn right and go East on a lease road turning Southeast approx. 0.2 mile to proposed road on left.

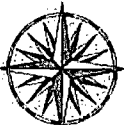
Follow proposed road North approx. 0.1 mile to this location.

SCALE: 1" = 100'
0 50 100
BEARINGS ARE
MAD 27 GRID - NM EAST
DISTANCES ARE
GROUND.

Copyright 2012 - All Rights Reserved

NO.	REVISION	DATE
JOB NO.: LS130454		
DWG. NO.: 130454PAD		

PROSPERITY CONSULTANTS, LLC



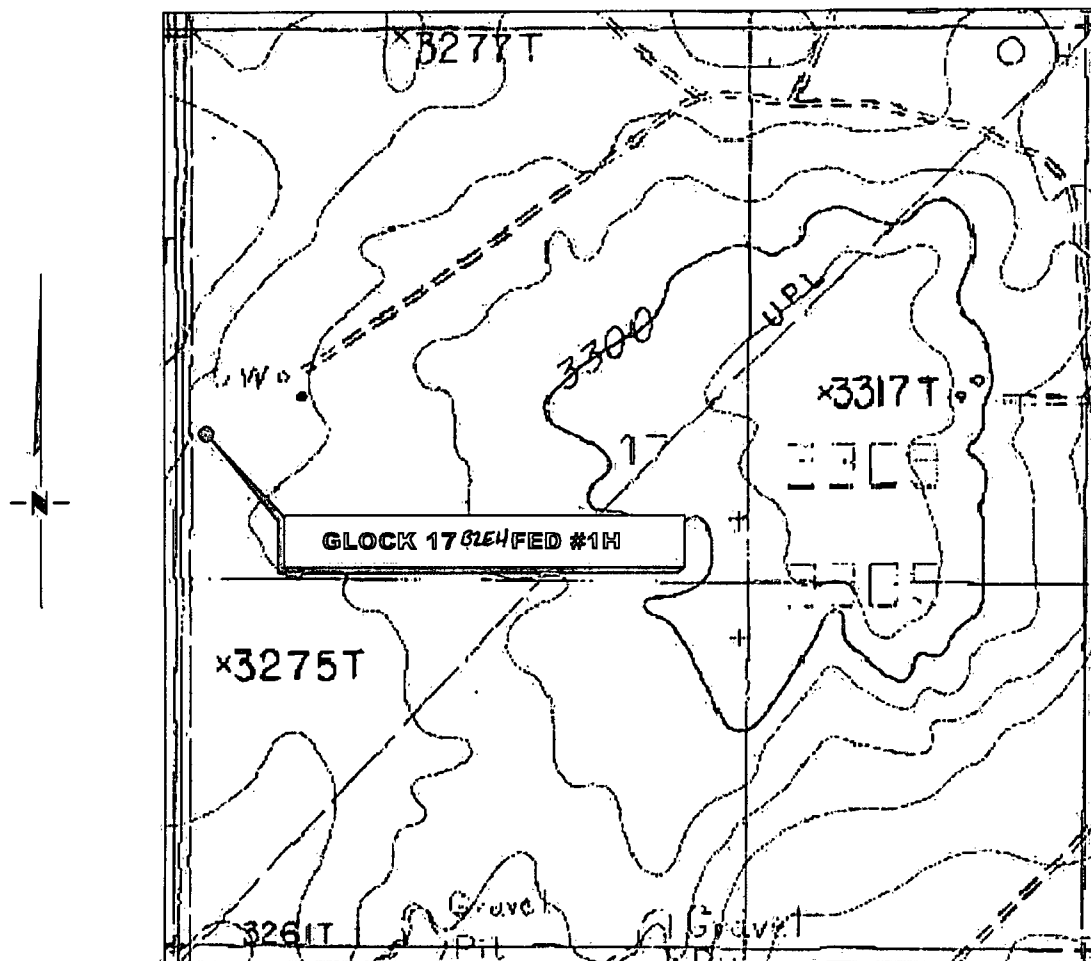
2251 Double Creek Drive, Suite 602, Round Rock, Texas 78664

© (512) 992-2087 f (512) 251-2518

SCALE: 1" = 100'
DATE: 11/1/13
SURVEYED BY: BK/IE
DRAWN BY: AF
APPROVED BY: LWB
SHEET : 1 OF 2

Exhibit 3A

LOCATION VERIFICATION MAP



SECTION 17, TWP. 20 SOUTH, RGE. 29 EAST,
N. M. P. M., EDDY COUNTY, NEW MEXICO

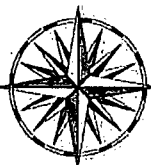
OPERATOR: Mewbourne Oil Company
LEASE: Glock 17 BLEH Fed
WELL NO.: 1H
ELEVATION: 3274'

LOCATION: 2320' FNL & 170' FWL
CONTOUR INTERVAL: 10'
USGS TOPO. SOURCE MAP:
Illinois Camp NE, NM (Prov. Ed. 1985)

Copyright 2012 - All Rights Reserved

NO.	REVISION	DATE
JOB NO.: LS130454		
DWG. NO.: 130454LVM		

PROSPERITY CONSULTANTS, LLC



2251 Double Creek Drive, Suite 602, Round Rock, Texas 78664

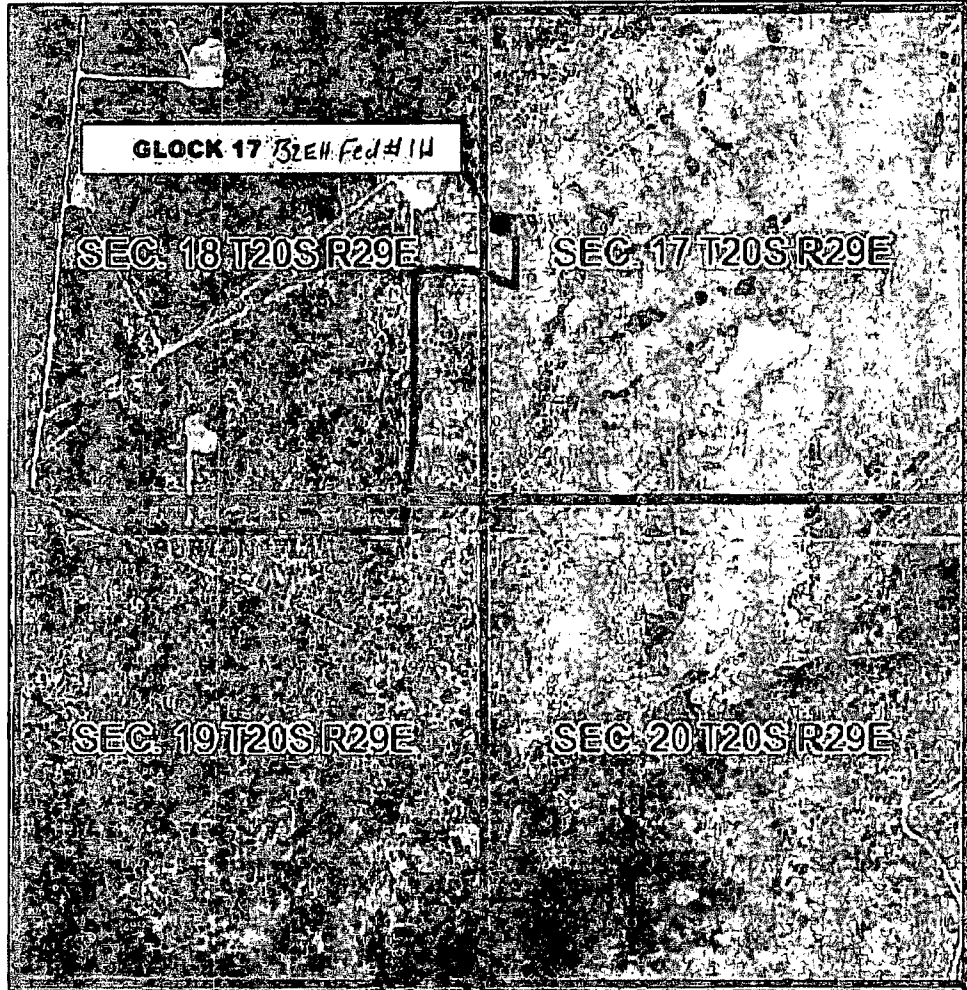
o (512) 992-2087 f (512) 251-2518

SCALE: 1" = 1000'
DATE: 11/1/13
SURVEYED BY: BK/IE
DRAWN BY: AF
APPROVED BY: LWB
SHEET : 1 OF 1

Exhibit 3B

VICINITY MAP

NOT TO SCALE



**SECTION 17, TWP. 20 SOUTH, RGE. 29 EAST,
N. M. P. M., EDDY COUNTY, NEW MEXICO**

OPERATOR: Mewbourne Oil Company
LEASE: Glock 17 B2EH Fed
WELL NO.: 1H

LOCATION: 2320' FNL & 170' FWL
ELEVATION: 3274'

Copyright 2012 - All Rights Reserved

NO.	REVISION	DATE
JOB NO.: LS130454		
DWG. NO.: 130454VM		

PROSPERITY CONSULTANTS, LLC



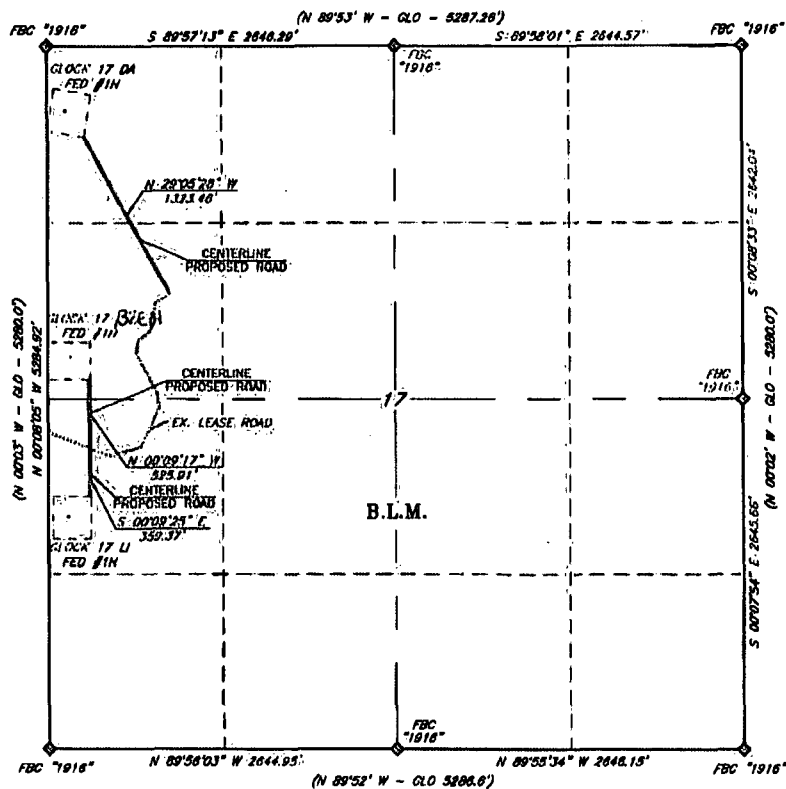
2251 Double Creek Drive, Suite 602, Round Rock, Texas 78664

o (512) 992-2087 f (512) 251-2518

SCALE: N.T.S.
DATE: 11/1/13
SURVEYED BY: BK/IE
DRAWN BY: AF
APPROVED BY: LWB
SHEET : 1 OF 1

Exhibit 3C

**MEWBOURNE OIL COMPANY
PROPOSED ACCESS ROADS FOR GLOCK 17 WELLS
SEC. 17, T20S, R29E, N.M.P.M., EDDY CO., N.M.**



SCALE: 1" = 1000'
0 500 1000

BEARINGS: MAG 27 GRID-NM EAST
DISTANCES: HORIZ. GROUND

LEGEND
() RECORD DATA
◆ FBC*** FOUND BRASS CAP "YEAR"

Copyright 2013 - All Rights Reserved

NO.	REVISION	DATE
JOB NO.: LS130454		
DWG. NO.: 130454RD		

PROSPERITY CONSULTANTS, LLC



2251 Double Creek Drive, Suite 602, Round Rock, Texas 78664

o (512) 992-2087 f (512) 251-2518

SCALE: 1" = 1000'
DATE: 11/1/13
SURVEYED BY: BK/IE
DRAWN BY: AF
APPROVED BY: LWB
SHEET : 2 OF 2

Exhibit 3D

Access Road

Proposed Road

236

© 2015 Google

SWNE

SENE

NWSE

SESE

SWSE

SWNE

SENE

NWSE

SESE

SWSE

SWNE

SENE

NWSE

SESE

SWSE

SWNE

SENE

NWSE

SESE

SWSE

Google Earth Pro 6.0.2.11

Google

Exhibit "3E"

SWNE

SENE

SWNW

SENW

SWNE

SENE

Block 17 B2EH Fed 41H

Flow Line

NWSE

NESE

NWSW

NESW

NWSE

NESE

Block 17 L1 Fed 41H

Approved Flow Line

SESE

SWSW

SESW

SWSE

SESE

238

Burton's Rd

NWNE

NENE

NWNW

NENW

NWNE

NENE

©2013 Google

GOO
GL

Imagery Date: 4/16/2013 32°34'10.34" N 104°16'15.77" W elev: 3290 ft

Exhibit "3F"

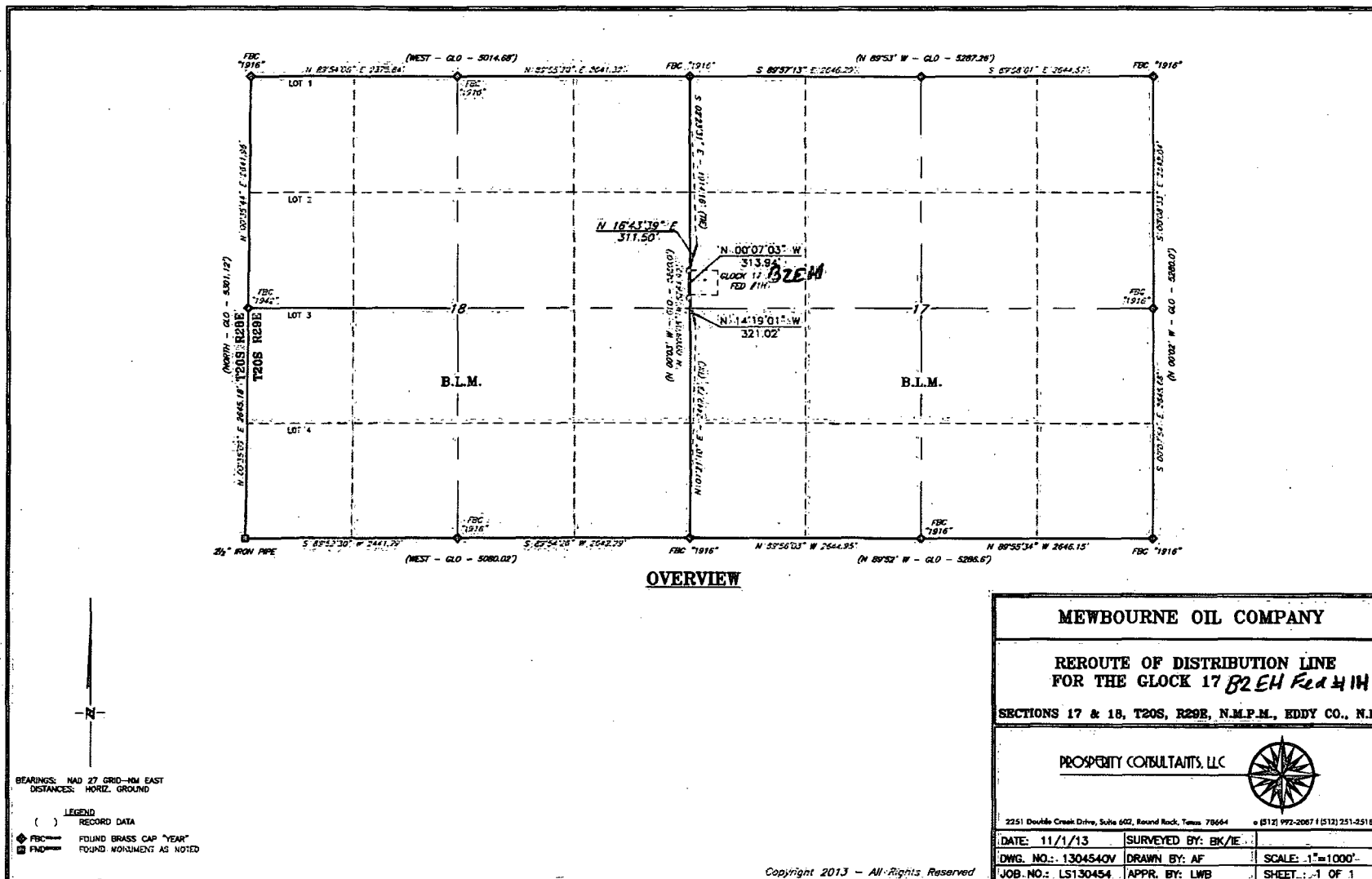
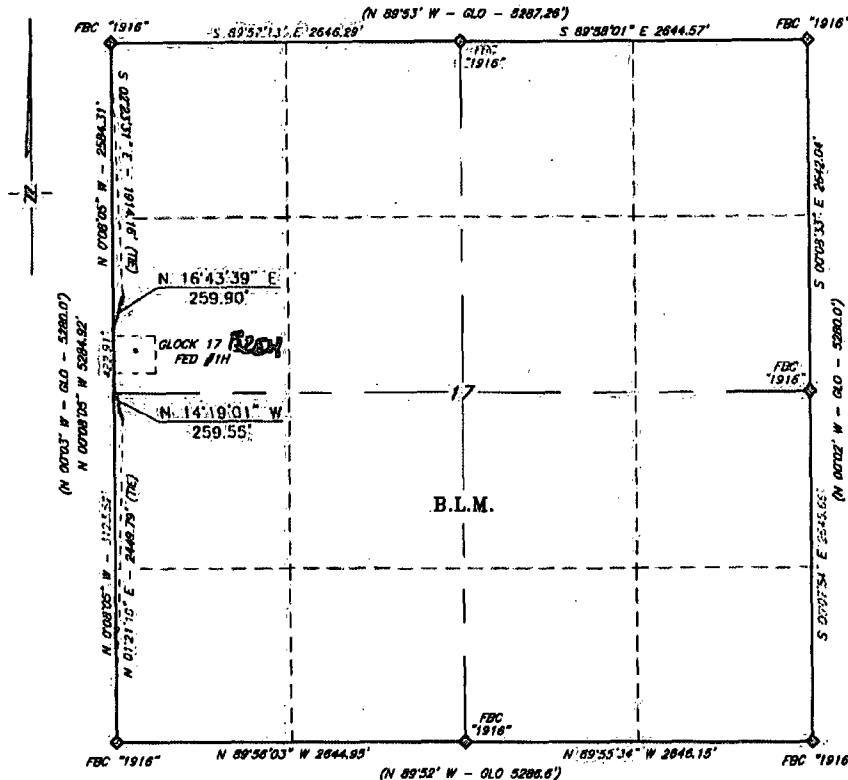


Exhibit "36"

**MEWBOURNE OIL COMPANY
REROUTE OF DISTRIBUTION LINE
FOR THE GLOCK 17326H Fed #1H
SEC. 17, T20S, R29E, N.M.P.M., EDDY CO., N.M.**



DESCRIPTION

A strip of land 30 feet wide, being 519.45 feet or 31.482 rods in length lying in Section 17, Township 20 South, Range 29 East, N. M. P. M., Eddy County, New Mexico, being 15 feet left and 15 feet right of the following described survey of a centerline across B.L.M. Land, Eddy Co., N.M.:

Beginning at a point which lies N 01°21'10" E, 2448.79 feet from a Brass Cap stamped, "1916" found for the Southwest corner of Section 17;

Thence N 14°19'01" W, 259.55 feet, to a point on the West line of said Section 17 which bears S 00°08'05" E, 2584.31 feet from a Brass Cap stamped, "1916" found for the Northwest corner of said Section 17.

Thence Beginning Again at a point on the West line of Section 17 which lies N 00°08'05" W, 3123.52 feet from a Brass Cap, stamped "1916", found for the Southwest corner of Section 17;

Thence N 16°43'39" E, 259.90 feet to a point in the Northwest quarter of section 17 which bears S 02°23'31" E 1914.18 feet from a Brass Cap, stamped "1916", found for the Northwest corner of section 17.

Said strip of land contains 0.358 acres, more or less and is allocated by forties as follows:

NW ¼	SW ¼	0.138 Acres
SE ¼	NW ¼	0.220 Acres

SCALE: 1" = 1000'
0 500 1000

BEARINGS: NAD 27 GRID-NM EAST
DISTANCES: HORIZ. GROUND

LEGEND

() RECORD DATA
◆ FBC**** FOUND BRASS CAP YEAR

I, R. M. Howell, a N. M. Professional Surveyor, hereby certify that this plat was prepared from an actual ground survey made under my direct supervision and that said survey and plat meet the Min. Stds. for Land Surveying in the State of N. M. and are true and correct to the best of my knowledge and belief.

Robert M. Howell
Robert M. Howell NMPS 19680

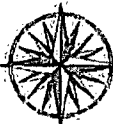


Copyright 2013 - All Rights Reserved

NO.	REVISION	DATE

JOB NO.: LS130454-1
DWG. NO.: 130454ELEC

PROSPERITY CONSULTANTS, LLC

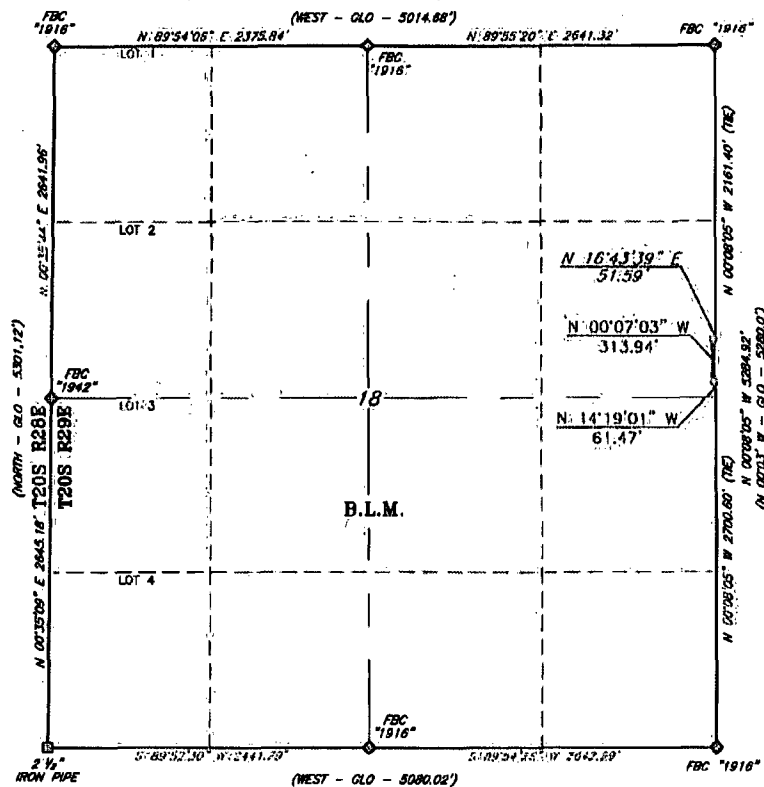


2251 Double Creek Drive, Suite 402, Round Rock, Texas 78664

o (512) 992-2087 f (512) 251-2519

SCALE: 1" = 1000'
DATE: 11/1/13
SURVEYED BY: BK/IE
DRAWN BY: AF
APPROVED BY: LWB
SHEET : 1 OF 1

MEWBORNE OIL COMPANY
REROUTE OF DISTRIBUTION LINE
FOR THE GLOCK 17~~24~~ FED #1H
SEC. 18, T20S, R29E, N.M.P.M., EDDY CO., N.M.

**DESCRIPTION**

A strip of land 30 feet wide, being 427.00 feet or 25.879 rods in length lying in Section 18, Township 20 South, Range 29 East, N. M. P. M., Eddy County, New Mexico, being 15 feet left and 15 feet right of the following described survey of a centerline across B.L.M. Land, Eddy Co., N.M.:

Beginning at a point on the East line of Section 18, which lies N 00°08'05" W, 2700.80 feet from a Brass Cap stamped, "1916" found for the Southeast corner of Section 18;

Thence N 14°19'01" W, 61.47 feet;

Thence N 00°07'03" W, 313.94 feet;

Thence N 16°43'39" E, 51.59 feet to the Point of Ending, a point on the East line of the Northeast quarter of section 18, which bears, S 00°08'05" E 2181.40 feet from a Brass Cap stamped, "1918" found for the Northeast corner of section 18.

Said strip of land contains 0.284 acres, more or less and is allocated by forties as follows:

SE ¼ NE ¼ 0.294 Acres



SCALE: 1" = 1000'

BEARINGS: NAD 27 GRID-NM EAST
DISTANCES: HORIZ. GROUND

LEGEND

() RECORD DATA
 4 FEB**** FOUND BRASS CAP "YEAR"
 8 FND**** FOUND MONUMENT AS NOTED

I, R. M. Howett, a N. M. Professional Surveyor, hereby certify that this plat was prepared from an actual ground survey made under my direct supervision, said survey and plat meet the Min. Stds. for Land Surveying in the State of N. M. and are true and correct to the best of my knowledge and belief.

Robert M. Howatt NM-PS 19680

Copyright 2013 - All Rights Reserved

NO.	REVISION	DATE
JOB NO.: LS130454-2		
DWG. NO.: 130454ELEC		

PROSPERITY CONSULTANTS, LLC



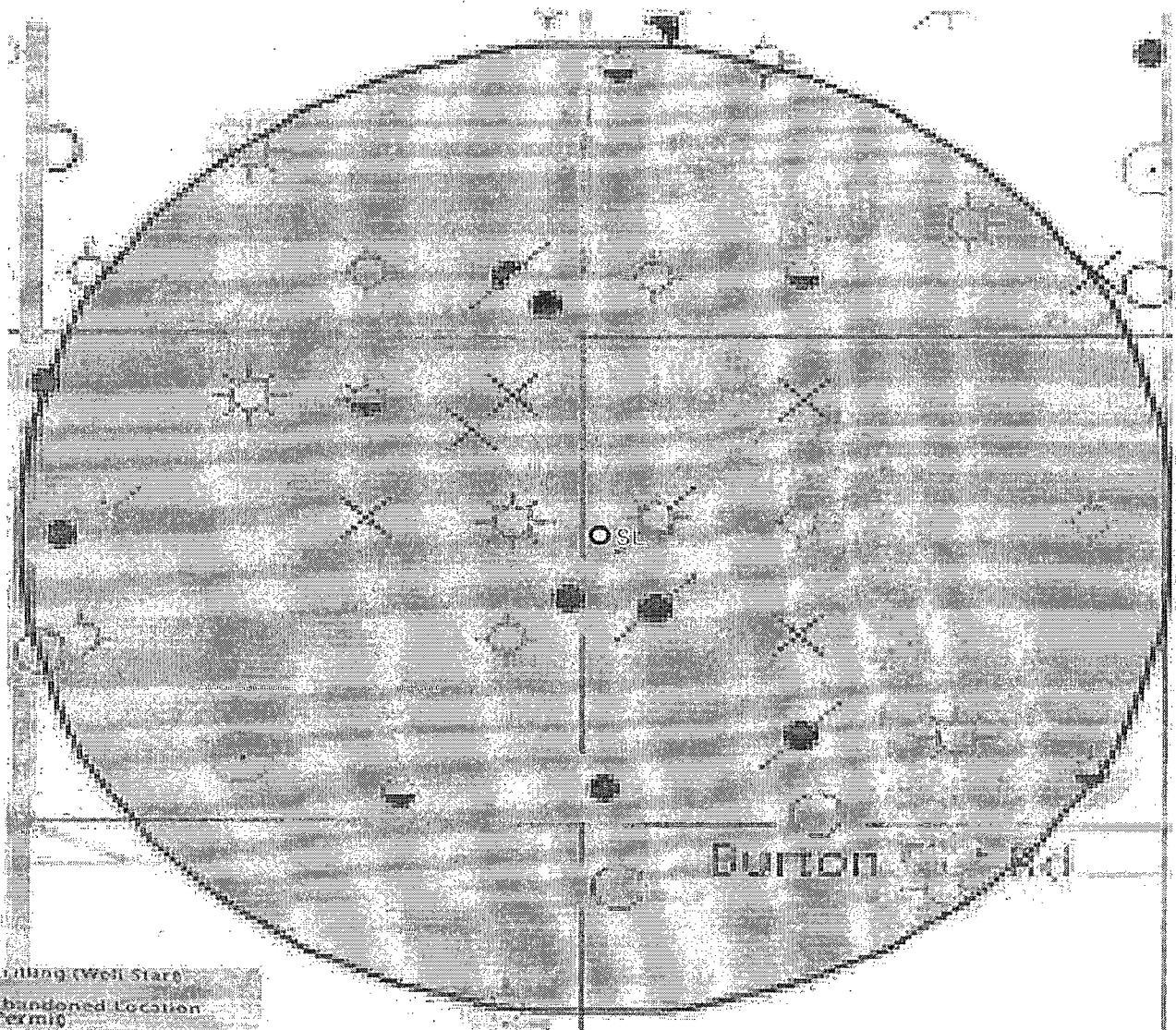
SCALE: 1" = 1000'
DATE: 11/1/13
SURVEYED BY: BK/IE
DRAWN BY: AF
APPROVED BY: LWB
SHEET : 1 OF 1

2251 Double Creek Drive, Suite 602, Round Rock, Texas 78664

• (512) 992-2067 f (512) 261-2616

SHEET : 1 OF 1

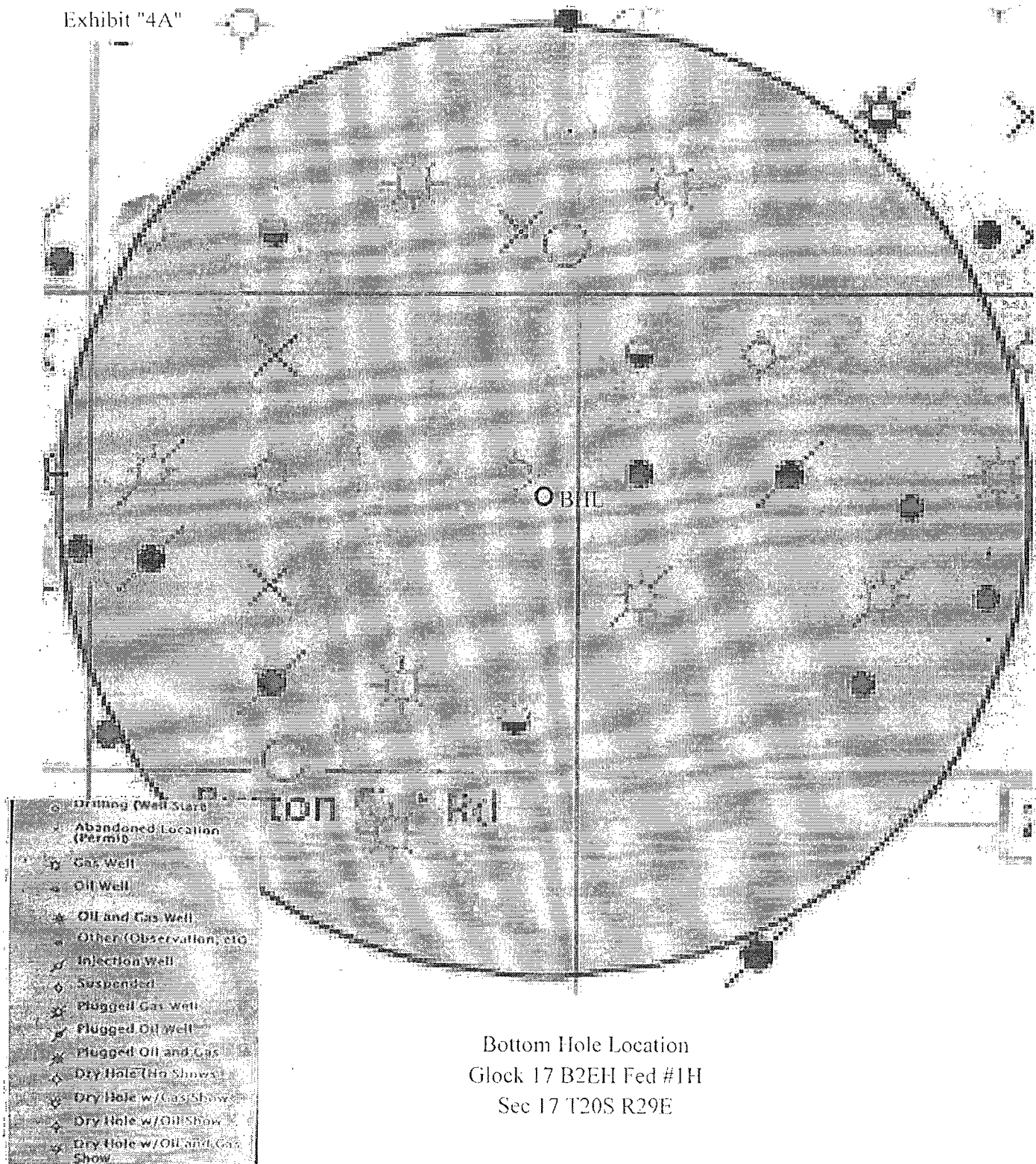
Exhibit 4



○	Drilling (Well Start)
×	Abandoned Location (Permit)
◇	Gas Well
●	Oil Well
⊗	Oil and Gas Well
⊙	Other (Observation, etc)
⊕	Injection Well
○	Suspended
⊗	Plugged Gas Well
⊗	Plugged Oil Well
⊗	Plugged Oil and Gas
◇	Dry Hole (No Shows)
◇	Dry Hole w/Gas Show
◇	Dry Hole w/Oil Show
◇	Dry Hole w/Oil and Gas Show

Surface Location
Glock 17 B2EH Fed #1H
Sec 17 T20S R29E

Exhibit "4A"



Drilling Program
Mewbourne Oil Company
 Glock "17" B2EH Federal #1H
 2320' FNL & 170' FWL (SHL)
 Sec 17-T20S-R29E
 Eddy County, New Mexico

1. The estimated tops of geological markers are as follows:

Rustler	125'
Top Salt	400'
Base Salt/Tansill	800'
Yates	1020'
Seven Rivers	NP
Queen	NP
Capitan	1225'
Grayburg	NP
San Andres	NP
*Delaware	3070'
*Bone Spring	5725'
*2 nd Bone Spring Sand	7470'

2. Estimated depths of anticipated fresh water, oil, or gas:

Water	Fresh water is anticipated at 50' and will be protected by setting surface casing at 375' and cementing to surface.
Hydrocarbons	Oil and gas are anticipated in the above (*) formations. These zones will be protected by casing as necessary.

3. Pressure control equipment:

MOC requests a variance to install a 2M diverter after running 20" casing. A 2000# WP Annular will be installed after running 13 3/8" casing. A 3000# WP Double Ram BOP and 3000# WP Annular will be installed after running 9 5/8" & 7" casing strings. Pressure tests will be conducted prior to drilling out under all casing strings. BOP controls will be installed prior to drilling under surface casing and will remain in use until completion of drilling operations. BOPE will be inspected and operated as recommended in Onshore Order #2. A kelly cock and a sub equipped with a full opening valve sized to fit the drill pipe and collars will be available on the rig floor in the open position when the kelly is not in use. Will test the 13 3/8" annular to 1500# and the 9 5/8" & 7" BOPE to 3000# and annular to 1500# with a third party testing company before drilling below each shoe, but will test again, if needed, in 30 days from the 1st test as per BLM Onshore Oil and Gas Order #2.

4. Drilling Program:

MOC proposes to drill a vertical wellbore to 7257' & kick off to horizontal @ 7734' TVD. The well will be drilled to 12325' MD (7834' TVD). See attached directional plan.

5. Proposed casing and cementing program:

A. Casing Program:

Hole Size	Casing	Wt/Ft.	Grade	Depth	Jt Type
26"	20" (new)	94#	K55	0'-375'	BT&C
17 1/2"	13 3/8" (new)	48#	H40	0'-1300'	ST&C
12 1/4"	9 5/8" (new)	36#	J55	0'-3000'	LT&C
8 3/4"	5 1/2" (new)	17#	P110	0'-7257' MD	LT&C
8 3/4"	5 1/2" (new)	17#	P110	7257'-8157' MD	BT&C
8 3/4"	5 1/2" (new)	17#	P110	8157'-12325' MD	LT&C

Minimum casing design factors: Collapse 1.125, Burst 1.0, Tensile strength 1.8.

*Subject to availability of casing.

B. Cementing Program:

- See COA* i. Surface Casing: 200 sacks Class "C" (35:65:4) light cement w/ 2% CaCl₂ & LCM additives. Yield at 2.0 cuft/sk. 200 sacks Class "C" cement w/ 2% CaCl₂. Yield at 1.34 cuft/sk. Cmt circulated to surface w/100% excess.
- See COA* ii. 1st Intermediate Casing: 360 sacks Class "C" (35:65:4) light cement w/ salt and LCM additives. Yield at 2.0 cuft/sk. 200 sacks Class "C" cement w/2% CaCl₂. Yield at 1.34 cuft/sk. Cmt circulated to surface w/25% excess.
- See COA* iii. 2nd Intermediate Casing: 460 sacks Class "C" (35:65:4) light cement w/ salt and LCM additives. Yield at 2.0 cuft/sk. 200 sacks Class "C" cement w/2% CaCl₂. Yield at 1.34 cuft/sk. Cmt circulated to surface w/25% excess.
- iii. Production Casing: 960 sacks Class H light cement (35:65:4) with fluid loss, LCM, & salt additives w/315 bbl fresh water. Yield at 2.45 cuft/sk. 1075 sacks Class H cement w/150 bbl fres water. Yield at 1.21 cuft/sk. ~~Cmt circulated to 200' into 9 5/8" casing.~~ *50' above Capitan Reef ~ 1324'*

*Referring to above blends of light cement: (wt% fly ash : wt% cement : wt% bentonite of the total of first two numbers). Generic names of additives are used since the availability of specific company and products are unknown at this time.

* If circulation is lost in 2nd Intermediate casing MOC will do the following:

	Hole Size	Casing	Wt/Ft.	Grade	Depth	Jt Type
<i>See COA</i> 1 st stage	12 1/4"	9 5/8" (new)	36#	J55	0'-1500'	LT&C
DV tool @ 1500'						
External casing packer						
2 nd stage	12 1/4"	9 5/8" (new)	36#	J55	1500'-3000'	LT&C

Cementing Program: (for lost circulation)

See COA 1st stage: 250 sacks Class "C" (35:65:4) light cement w/ salt and LCM additives. Yield at 2.0 cuft/sk. 200 sacks Class "C" cement w/2% CaCl₂. Yield at 1.34 cuft/sk. Cmt circulated to tie back to DV tool with 25% excess.

2nd stage: 230 sacks Class "C" (35:65:4) light cement w/ salt and LCM additives. Yield at 2.12 cuft/sk. 100 sacks Class "C" neat cement w/2% CaCl₂. Yield at 1.33 cuft/sk. Cmt circulated to surface w/25% excess.

6. Mud Program:

Interval	Type System	Weight	Viscosity	Fluid Loss
0'-375'	FW spud mud	8.6-9.0	32-34	NA
375'-1300'	Brine water	10.0-10.2	28-30	NA
1300'-3000'	FW	8.3-8.6	28-30	NA
3000'-7257'(KOP)FW		8.5-8.7	28-30	15
7257'- TD	FW w/Polymer	8.5-8.7	32-35	15

*Visual mud monitoring system shall be in place to detect volume changes indicating loss or gain of circulation fluid volume. Sufficient mud materials will be kept on location at all times to combat abnormal conditions.

7. Evaluation Program:

Samples: 10' samples from surface casing to TD
Logging: GR, CN & Gyro 100' above KOP (7157') to surface. GR from 7157' to TD.

8. Downhole Conditions

See CDA

Zones of abnormal pressure:	None anticipated
Zones of lost circulation:	Anticipated in surface and intermediate holes
Maximum bottom hole temperature:	120 degree F
Maximum bottom hole pressure:	8.3 lbs/gal gradient or less (.43368 x 7834"=3397 psi)
MOC does not anticipate H2S, However H2S contingency plan is attached.	

9. Anticipated Starting Date:

Mewbourne Oil Company intends to drill this well as soon as possible after receiving approval with approximately 60 days involved in drilling operations and an additional 20 days involved in completion operations on the project.

Mewbourne Oil Co

Eddy County, New Mexico

Sec 17, T20S, R29E

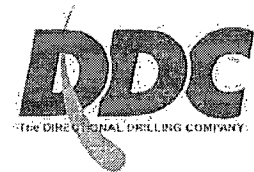
Glock 17 B2EH Fed #1H

Wellbore #1

Plan: Design #1

DDC Well Planning Report

03 March, 2014



DDC
Well Planning Report



Database:	EDM 5000.1 Single User Db	Local Co-ordinate Reference:	Well Glock 17 B2EH Fed #1H
Company:	Mewbourne Oil Co	TVD Reference:	Well @ 3294.0usft (Patterson)
Project:	Eddy County, New Mexico	MD Reference:	Well @ 3294.0usft (Patterson)
Site:	Sec 17, T20S, R29E	North Reference:	Grid
Well:	Glock 17 B2EH Fed #1H	Survey Calculation Method:	Minimum Curvature
Wellbore:	Wellbore #1		
Design:	Design #1		

Project				Eddy County, New Mexico			
Map System:		US State Plane 1927 (Exact solution)		System Datum:		Mean Sea Level	
Geo Datum:		NAD 1927 (NADCON CONUS)					
Map Zone:		New Mexico East 3001					

Site:	Sec 17, T20S, R29E				
Site Position:		Northing:	569,892.00 usft	Latitude:	32° 33' 59.474 N
From:	Map	Easting:	572,398.59 usft	Longitude:	104° 5' 53.986 W
Position Uncertainty:	0.0 usft	Slot Radius:	13-3/16 "	Grid Convergence:	0.13 °

Well	Glock 17 B2EH Fed #1H					
Well Position	+N/-S	2,815.5 usft	Northing:	572,707.50 usft	Latitude:	32° 34' 27.378 N
	+E/-W	-1,978.1 usft	Easting:	570,420.50 usft	Longitude:	104° 6' 17.030 W
Position Uncertainty		0.0 usft	Wellhead Elevation:	0.0 usft	Ground Level:	3,274.0 usft

Wellbore		Wellbore #1			
Magnetics	Model Name	Sample Date	Declination (°)	Dip Angle (°)	Field Strength (nT)
	IGRF2010	3/3/2014	7.52	60.35	48,498

Design:	Design #1			
Audit Notes:				
Version:	Phase:	PLAN	Tile On Depth:	0.0
Vertical Section:	Depth From (TVD)	+N/-S	+E/-W	Direction
	(usft)	(usft)	(usft)	(°)
	0.0	0.0	0.0	87.42

Plan Sections										
Measured Depth (usft)	Inclination (°)	Azimuth (°)	Vertical Depth (usft)	+N/-S (usft)	+E/-W (usft)	Dogleg Rate (°/100usft)	Build Rate (°/100usft)	Turn Rate (°/100usft)	TFO (°)	Target
0.0	0.00	0.00	0.0	0.0	0.0	0.00	0.00	0.00	0.00	
7,256.7	0.00	0.00	7,256.7	0.0	0.0	0.00	0.00	0.00	0.00	
7,995.7	88.68	87.42	7,734.0	21.0	466.0	12.00	12.00	11.83	87.42	
12,324.6	88.68	87.42	7,834.0	216.1	4,789.4	0.00	0.00	0.00	0.00	PBHL Glock 17 B2EH

DDC
Well Planning Report



Database: EDM 5000.1 Single User Db
Company: Mewbourne Oil Co
Project: Eddy County, New Mexico
Site: Sec 17, T20S, R29E
Well: Glock 17 B2EH Fed #1H
Wellbore: Wellbore #1
Design: Design #1

Local Co-ordinate Reference:
TVD Reference:
MD Reference:
North Reference:
Survey Calculation Method:

Well: GLOCK 17 B2EH Fed #1H
Well @ 3294.0usft (Patterson)
Well @ 3294.0usft (Patterson)
Grid
Minimum Curvature

Planned Survey

Measured Depth (usft)	Inclination (°)	Azimuth (°)	Vertical Depth (usft)	+N/-S (usft)	+E/-W (usft)	Vertical Section (usft)	Dogleg Rate (°/100usft)	Build Rate (°/100usft)	Turn Rate (°/100usft)
Build 12°/100'									
7,256.7	0.00	0.00	7,256.7	0.0	0.0	0.0	0.00	0.00	0.00
7,300.0	5.20	87.42	7,299.9	0.1	2.0	2.0	12.00	12.00	0.00
7,400.0	17.20	87.42	7,397.9	1.0	21.3	21.3	12.00	12.00	0.00
7,500.0	29.20	87.42	7,489.6	2.7	60.6	60.7	12.00	12.00	0.00
7,600.0	41.20	87.42	7,571.2	5.3	118.1	118.2	12.00	12.00	0.00
7,700.0	53.20	87.42	7,639.0	8.6	191.2	191.4	12.00	12.00	0.00
7,800.0	65.20	87.42	7,690.1	12.5	276.9	277.2	12.00	12.00	0.00
7,900.0	77.20	87.42	7,722.3	16.8	371.3	371.7	12.00	12.00	0.00
End of Curve / 88.68° Inc / 87.42° Azm / 7734' TVD									
7,995.7	88.68	87.42	7,734.0	21.0	466.0	466.4	12.00	12.00	0.00
8,000.0	88.68	87.42	7,734.1	21.2	470.3	470.8	0.00	0.00	0.00
8,100.0	88.68	87.42	7,736.4	25.7	570.2	570.7	0.00	0.00	0.00
8,200.0	88.68	87.42	7,738.8	30.2	670.0	670.7	0.00	0.00	0.00
8,300.0	88.68	87.42	7,741.1	34.7	769.9	770.7	0.00	0.00	0.00
8,400.0	88.68	87.42	7,743.4	39.2	869.8	870.7	0.00	0.00	0.00
8,500.0	88.68	87.42	7,745.7	43.7	969.6	970.6	0.00	0.00	0.00
8,600.0	88.68	87.42	7,748.0	48.3	1,069.5	1,070.6	0.00	0.00	0.00
8,700.0	88.68	87.42	7,750.3	52.8	1,169.4	1,170.6	0.00	0.00	0.00
8,800.0	88.68	87.42	7,752.6	57.3	1,269.3	1,270.6	0.00	0.00	0.00
8,900.0	88.68	87.42	7,754.9	61.8	1,369.1	1,370.5	0.00	0.00	0.00
9,000.0	88.68	87.42	7,757.2	66.3	1,469.0	1,470.5	0.00	0.00	0.00
9,100.0	88.68	87.42	7,759.5	70.8	1,568.9	1,570.5	0.00	0.00	0.00
9,200.0	88.68	87.42	7,761.8	75.3	1,668.7	1,670.4	0.00	0.00	0.00
9,300.0	88.68	87.42	7,764.2	79.8	1,768.6	1,770.4	0.00	0.00	0.00
9,400.0	88.68	87.42	7,766.5	84.3	1,868.5	1,870.4	0.00	0.00	0.00
9,500.0	88.68	87.42	7,768.8	88.8	1,968.4	1,970.4	0.00	0.00	0.00
9,600.0	88.68	87.42	7,771.1	93.3	2,068.2	2,070.3	0.00	0.00	0.00
9,700.0	88.68	87.42	7,773.4	97.8	2,168.1	2,170.3	0.00	0.00	0.00
9,800.0	88.68	87.42	7,775.7	102.3	2,268.0	2,270.3	0.00	0.00	0.00
9,900.0	88.68	87.42	7,778.0	106.8	2,367.8	2,370.3	0.00	0.00	0.00
10,000.0	88.68	87.42	7,780.3	111.3	2,467.7	2,470.2	0.00	0.00	0.00
10,100.0	88.68	87.42	7,782.6	115.8	2,567.6	2,570.2	0.00	0.00	0.00
10,200.0	88.68	87.42	7,784.9	120.3	2,667.5	2,670.2	0.00	0.00	0.00
10,300.0	88.68	87.42	7,787.2	124.9	2,767.3	2,770.2	0.00	0.00	0.00
10,400.0	88.68	87.42	7,789.6	129.4	2,867.2	2,870.1	0.00	0.00	0.00
10,500.0	88.68	87.42	7,791.9	133.9	2,967.1	2,970.1	0.00	0.00	0.00
10,600.0	88.68	87.42	7,794.2	138.4	3,067.0	3,070.1	0.00	0.00	0.00
10,700.0	88.68	87.42	7,796.5	142.9	3,166.8	3,170.0	0.00	0.00	0.00
10,800.0	88.68	87.42	7,798.8	147.4	3,266.7	3,270.0	0.00	0.00	0.00
10,900.0	88.68	87.42	7,801.1	151.9	3,366.6	3,370.0	0.00	0.00	0.00
11,000.0	88.68	87.42	7,803.4	156.4	3,466.4	3,470.0	0.00	0.00	0.00
11,100.0	88.68	87.42	7,805.7	160.9	3,566.3	3,569.9	0.00	0.00	0.00
11,200.0	88.68	87.42	7,808.0	165.4	3,666.2	3,669.9	0.00	0.00	0.00
11,300.0	88.68	87.42	7,810.3	169.9	3,766.1	3,769.9	0.00	0.00	0.00
11,400.0	88.68	87.42	7,812.6	174.4	3,865.9	3,869.9	0.00	0.00	0.00
11,500.0	88.68	87.42	7,815.0	178.9	3,965.8	3,969.8	0.00	0.00	0.00
11,600.0	88.68	87.42	7,817.3	183.4	4,065.7	4,069.8	0.00	0.00	0.00
11,700.0	88.68	87.42	7,819.6	187.9	4,165.5	4,169.8	0.00	0.00	0.00
11,800.0	88.68	87.42	7,821.9	192.4	4,265.4	4,269.8	0.00	0.00	0.00
11,900.0	88.68	87.42	7,824.2	197.0	4,365.3	4,369.7	0.00	0.00	0.00
12,000.0	88.68	87.42	7,826.5	201.5	4,465.2	4,469.7	0.00	0.00	0.00
12,100.0	88.68	87.42	7,828.8	206.0	4,565.0	4,569.7	0.00	0.00	0.00
12,200.0	88.68	87.42	7,831.1	210.5	4,664.9	4,669.6	0.00	0.00	0.00

DDC
Well Planning Report



Database: EDM 5000.1 Single User Db
Company: Mawbourne Oil Co
Project: Eddy County, New Mexico
Site: Sec 17, T20S, R29E
Well: GLOCK 17 B2EH Fed #1H
Wellbore: Wellbore #1
Design: Design #1

Local Co-ordinate Reference: Well GLOCK 17 B2EH Fed #1H
TVD Reference: Well @ 3294.0usft (Patterson)
MD Reference: Well @ 3294.0usft (Patterson)
North Reference: Grid
Survey Calculation Method: Minimum Curvature

Planned Survey

Measured Depth (usft)	Inclination (°)	Azimuth (°)	Vertical Depth (usft)	+N/-S (usft)	+E/-W (usft)	Vertical Section (usft)	Dogleg Rate (°/100usft)	Build Rate (°/100usft)	Turn Rate (°/100usft)
12,300.0	88.68	87.42	7,833.4	215.0	4,764.8	4,769.6	0.00	0.00	0.00
TD @ 12325' MD / 7834' TVD									
12,324.6	88.68	87.42	7,834.0	216.1	4,789.4	4,794.2	0.00	0.00	0.00

Design Targets

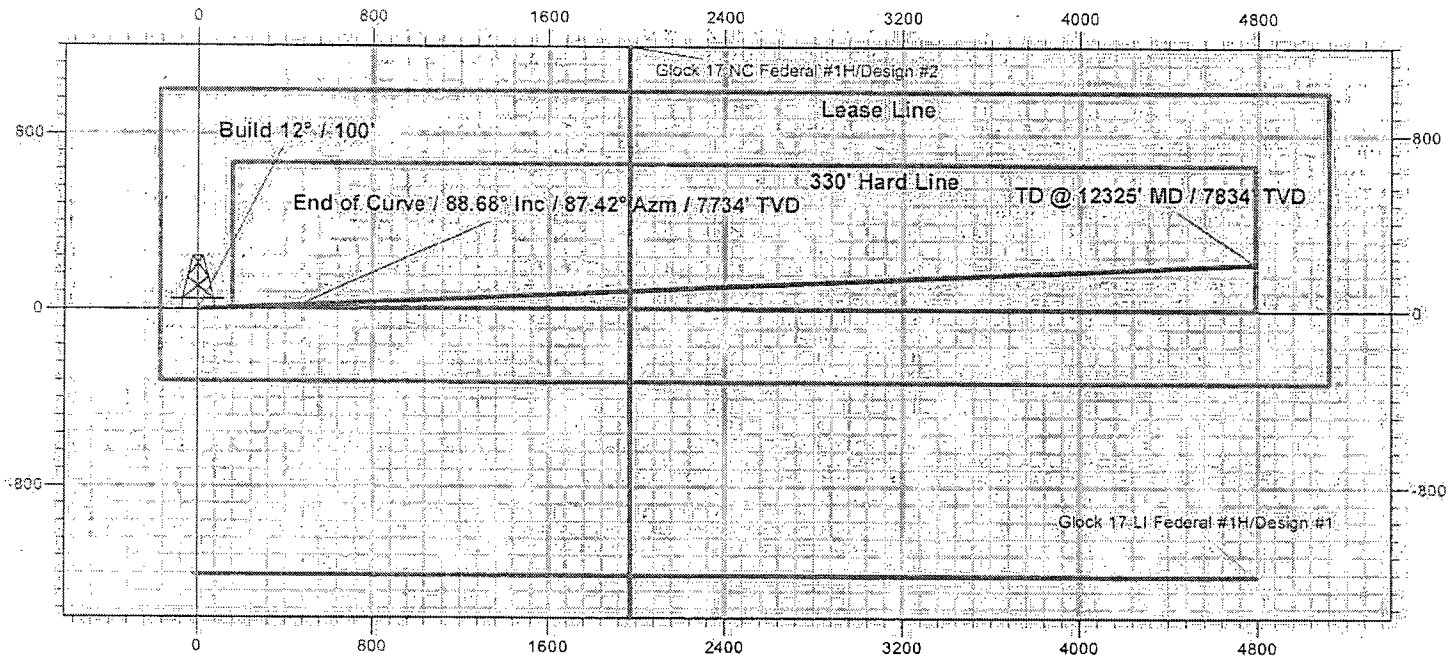
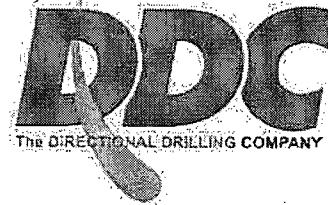
Target Name	Dip Angle (°)	Dip Dir. (°)	TVD (usft)	+N/-S (usft)	+E/-W (usft)	Northing (usft)	Easting (usft)	Latitude	Longitude
- hit/miss target Shape									
PBHL GLOCK 17 B2EH F. - plan hits target center - Point	0.00	0.00	7,834.0	216.1	4,789.4	572,923.59	575,209.87	32° 34' 29.411 N	104° 5' 21.054 W

Plan Annotations

Measured Depth (usft)	Vertical Depth (usft)	Local Coordinates		Comment
		+N/-S (usft)	+E/-W (usft)	
7,256.7	7,256.7	0.0	0.0	Build 12° / 100'
7,995.7	7,734.0	21.0	466.0	End of Curve / 88.68° Inc / 87.42° Azm / 7734' TVD
12,324.6	7,834.0	216.1	4,789.4	TD @ 12325' MD / 7834' TVD

Mewbourne Oil Co

Eddy County, New Mexico
Glock 17 B2EH Fed #1H
Design #1



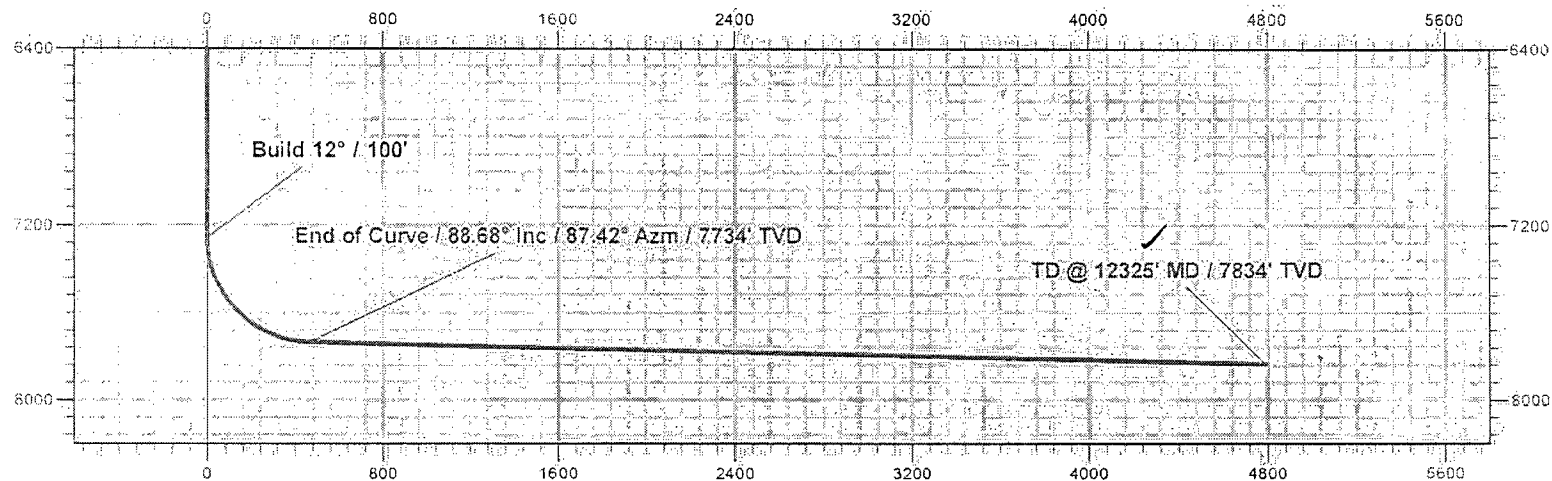
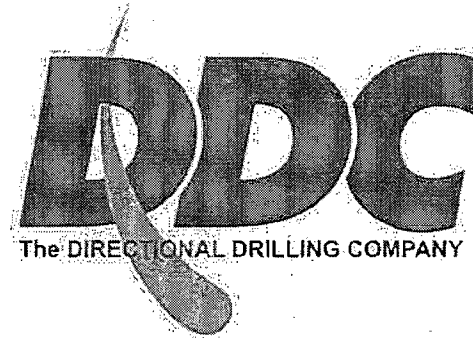
EOB @ 90.26° Inc / 359.86° Azm / 7784' TVD

Mewbourne Oil Company

Eddy County, New Mexico

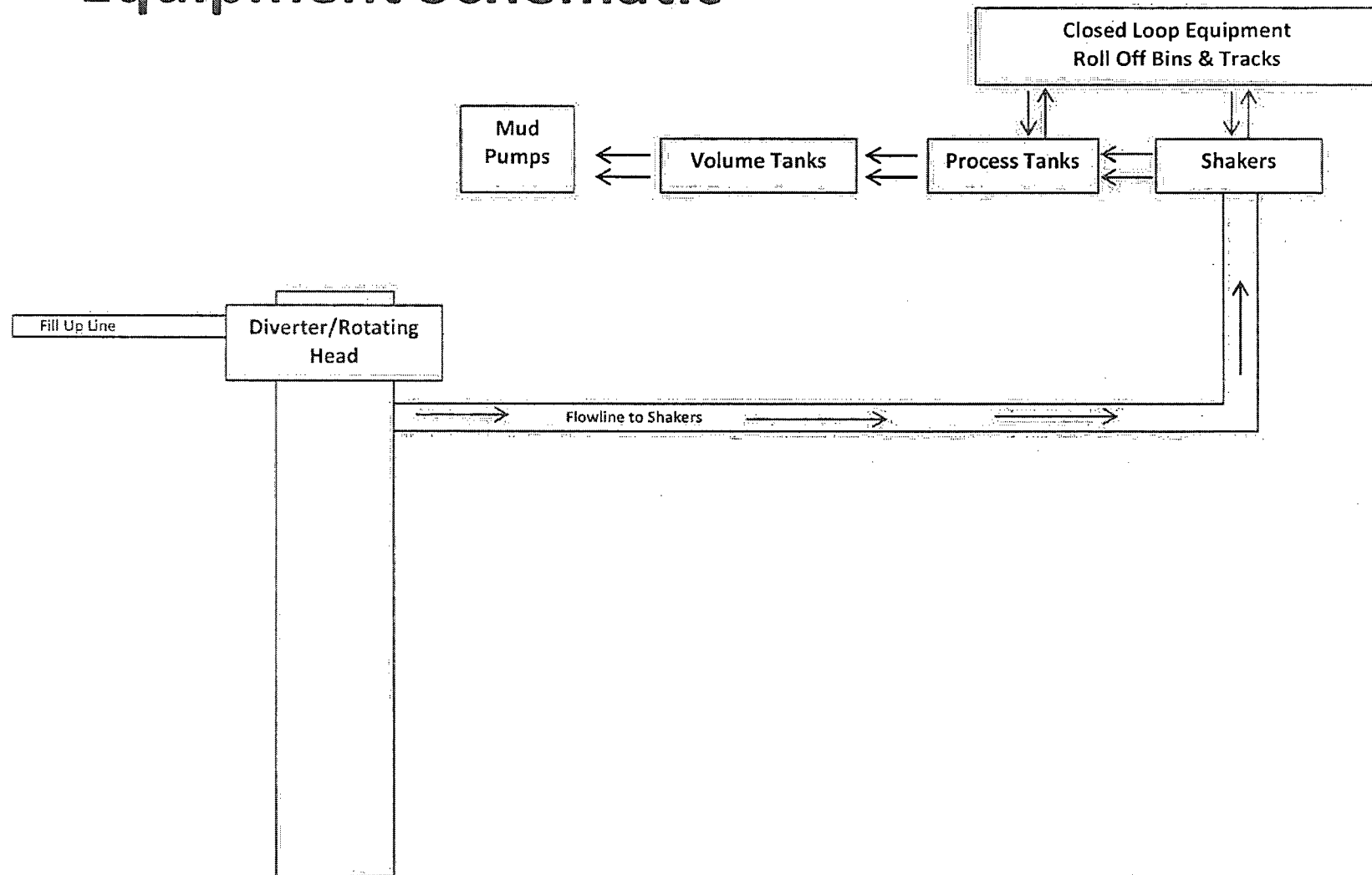
Glock 17 B2EH Fed #1H

Design #1



Vertical Section at 87.42° (800 usft/in)

20" Diverter & Closed Loop Equipment Schematic



13 5/8" 2M BOPE & Closed Loop Equipment Schematic

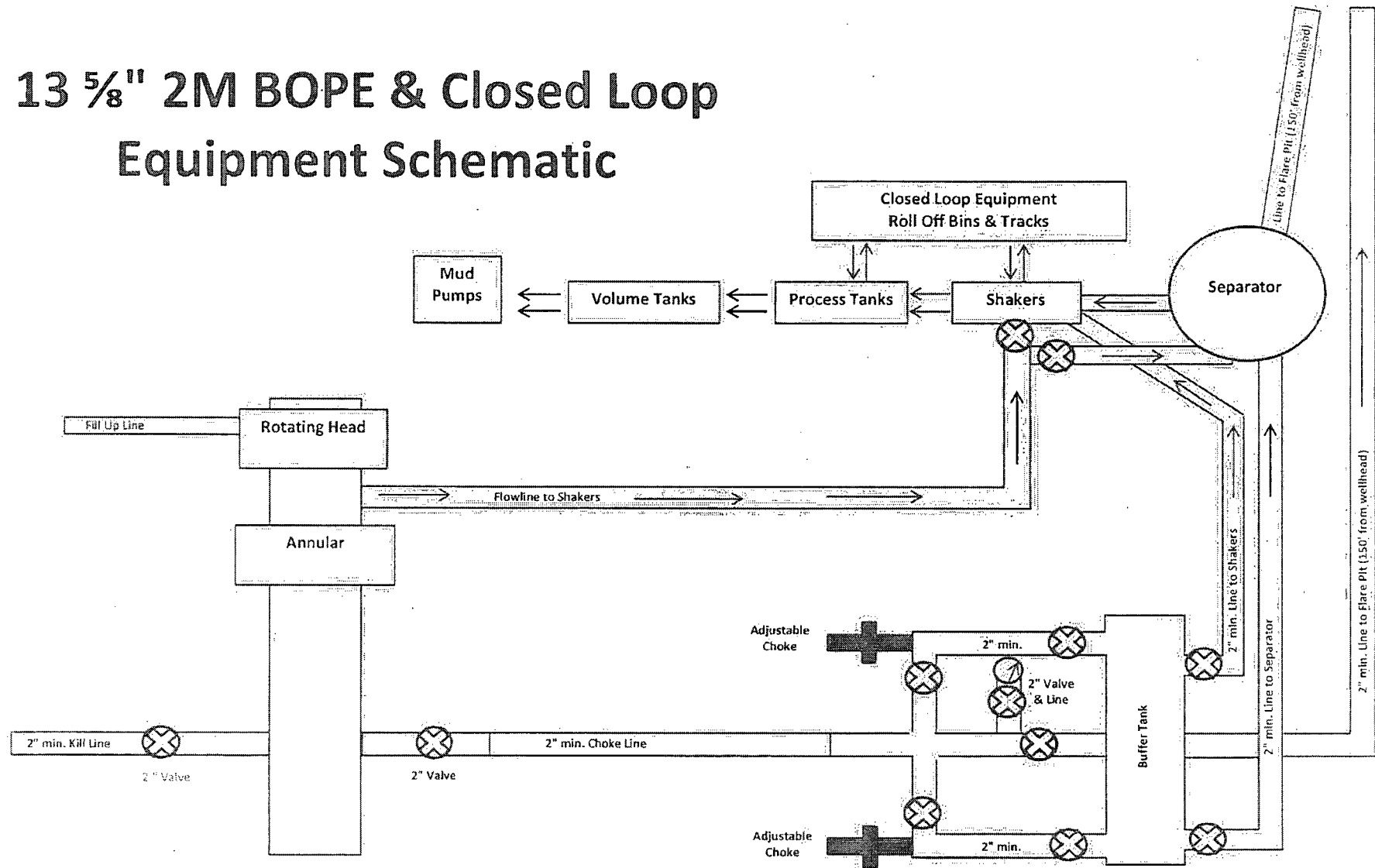


Exhibit 2A

Glock 17 B2EH Federal #1H

11" 3M BOPE & Closed Loop Equipment Schematic

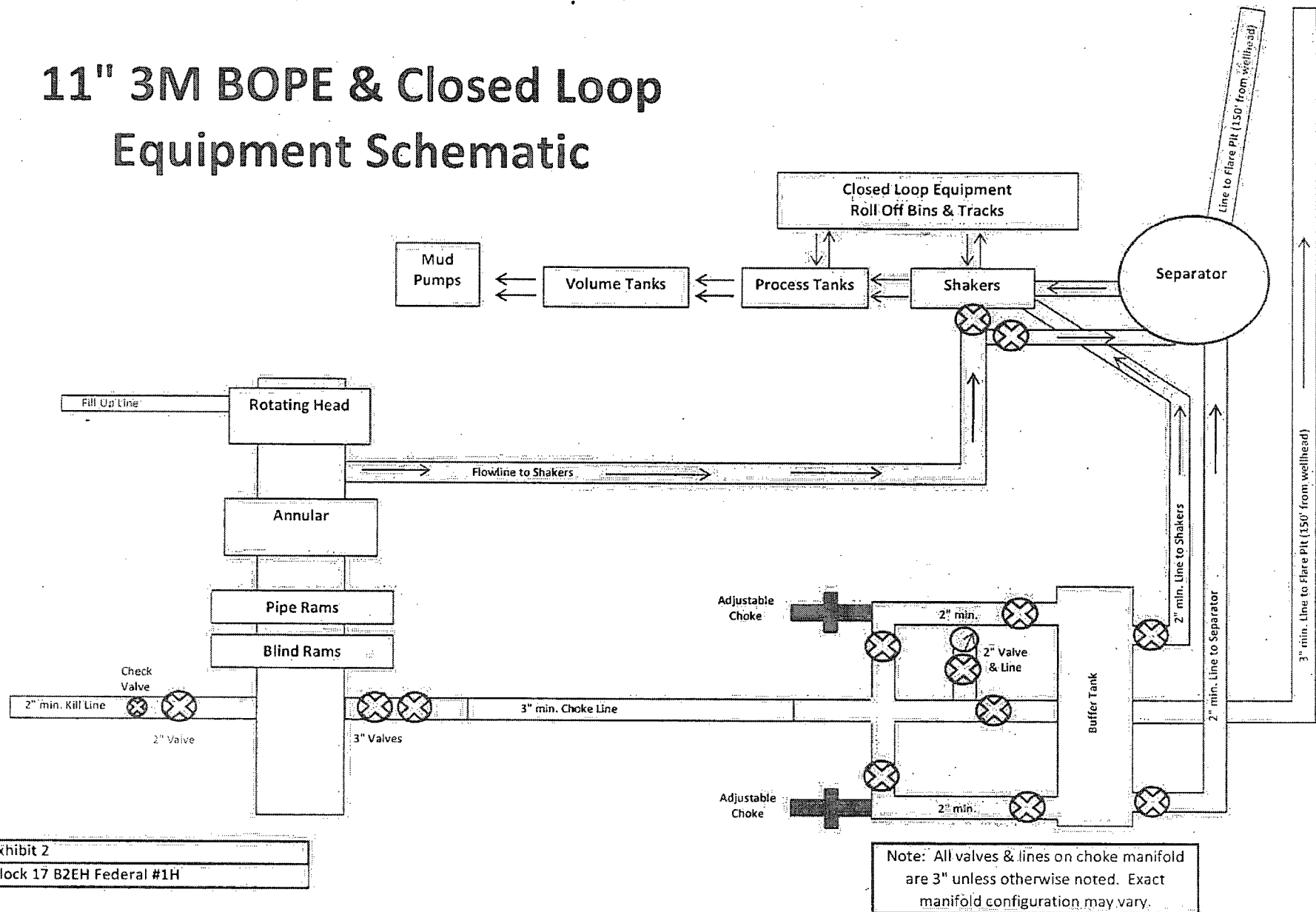


Exhibit 2
Glock 17 B2EH Federal #1H

Notes Regarding Blowout Preventer

Mewbourne Oil Company

Glock 17 B2EH Federal #1H
2320' FNL & 170' FWL (SHL)
Sec 17-T20S-R29E
Eddy County, New Mexico

- I. Drilling nipple (bell nipple) to be constructed so that it can be removed without the use of a welder through the opening of the rotary table, with minimum internal diameter equal to blowout preventer bore.
- II. Blowout preventer and all fittings must be in good condition with a minimum 3000 psi working pressure on 9-5/8" and 7" casing.
- III. Safety valve must be available on the rig floor at all times with proper connections to install in the drill string. Valve must be full bore with minimum 3000 psi working pressure.
- IV. Equipment through which bit must pass shall be at least as large as internal diameter of the casing.
- V. A kelly cock shall be installed on the kelly at all times.

Blowout preventer closing equipment to include an accumulator of at least 40 gallon capacity, two independent sources of pressure on closing unit, and meet all other API specifications.

H2S Diagram
Closed Loop Pad Dimensions 280' x 320'

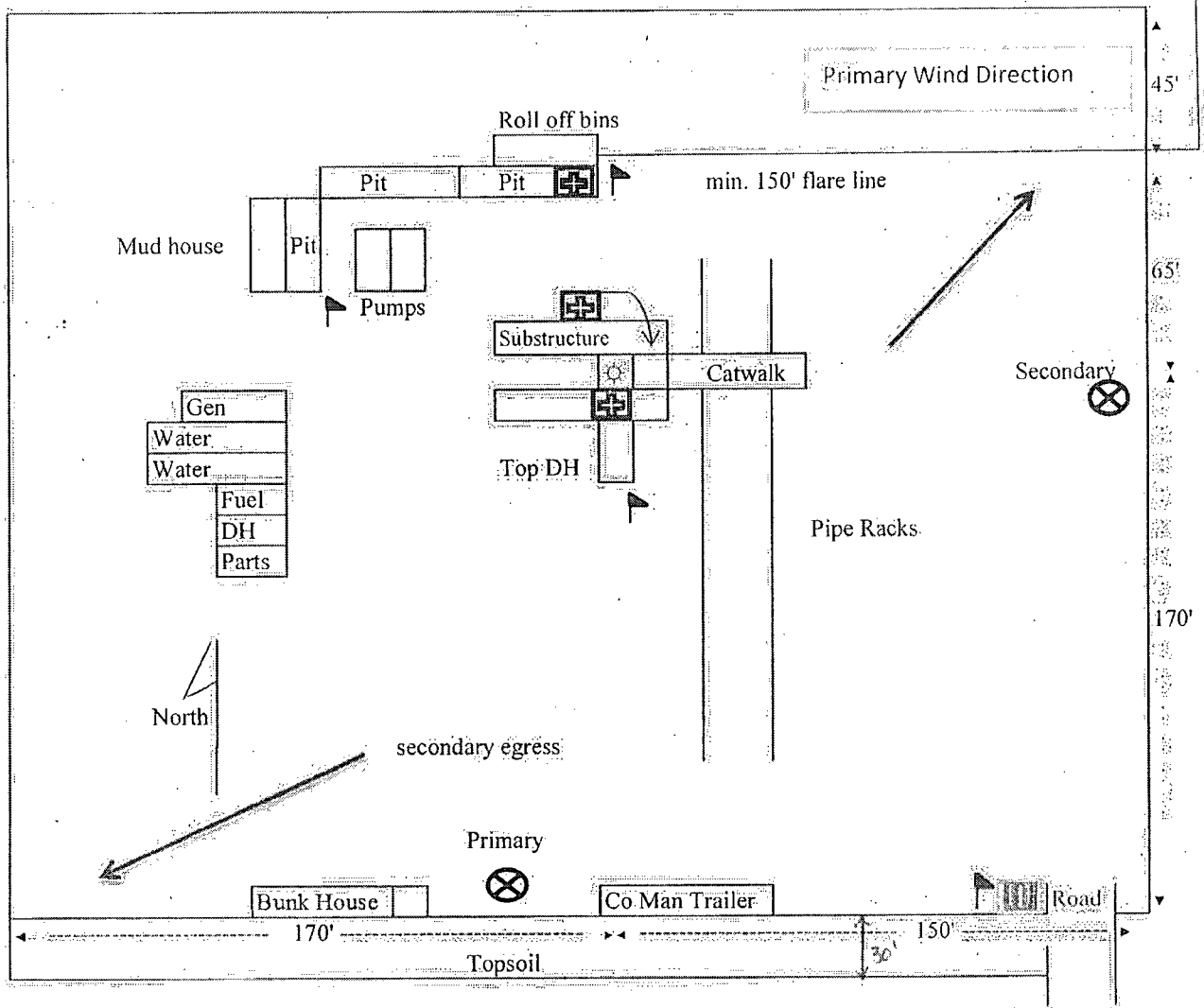
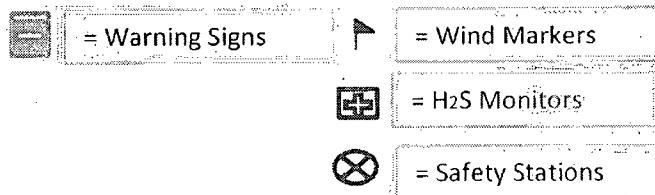


Exhibit 6

Mewbourne Oil Company
Glock 17 B2EH Federal #1H
2320' FNL & 170' FWL
Sec. 17 T20S R29E
Eddy County, NM



Hydrogen Sulfide Drilling Operations Plan

Mewbourne Oil Company

Glock 17 B2EH Federal #1H

2320' FNL & 170' FWL (SHL)

Sec 17-T20S-R29E

Eddy County, New Mexico

1. General Requirements

Rule 118 does not apply to this well because MOC has researched this area and no high concentrations of H₂S were found. MOC will have on location and working all H₂S safety equipment before the Delaware formation for purposes of safety and insurance requirements.

2. Hydrogen Sulfide Training

All personnel, whether regularly assigned, contracted, or employed on an unscheduled basis, will have received training from a qualified instructor in the following areas prior to entering the drilling pad area of the well:

1. The hazards and characteristics of hydrogen sulfide gas.
2. The proper use of personal protective equipment and life support systems.
3. The proper use of hydrogen sulfide detectors, alarms, warning systems, briefing areas, evacuation procedures.
4. The proper techniques for first aid and rescue operations.

Additionally, supervisory personnel will be trained in the following areas:

1. The effects of hydrogen sulfide on metal components. If high tensile tubular systems are utilized, supervisory personnel will be trained in their special maintenance requirements.
2. Corrective action and shut in procedures, blowout prevention, and well control procedures while drilling a well.
3. The contents of the Hydrogen Sulfide Drilling Operations Plan.

There will be an initial training session prior to encountering a known hydrogen sulfide source. The initial training session shall include a review of the site specific Hydrogen Sulfide Drilling Operations Plan.

3. Hydrogen Sulfide Safety Equipment and Systems

All hydrogen sulfide safety equipment and systems will be installed, tested, and operational prior to drilling below the intermediate casing.

1. Well Control Equipment

- A. Choke manifold with minimum of one adjustable choke/remote choke.
- B. Blowout preventers equipped with blind rams and pipe rams to accommodate all pipe sizes with properly sized closing unit
- C. Auxiliary equipment including annular type blowout preventer.

2. Protective Equipment for Essential Personnel

Thirty minute self contained work unit located in the dog house and at briefing areas.

Additionally: If H₂S is encountered in concentrations less than 10 ppm, fans will be placed in work areas to prevent the accumulation of hazardous amounts of poisonous gas. If higher concentrations of H₂S are detected the well will be shut in MOC will follow Onshore Order 6 and install a rotating head, mud/gas separator, remote choke and flare line with igniter will be installed.

3. Hydrogen Sulfide Protection and Monitoring Equipment

Two portable hydrogen sulfide monitors positioned on location for optimum coverage and detection. The units shall have audible sirens to notify personnel when hydrogen sulfide levels exceed 20 PPM.

4. Visual Warning Systems

A. Wind direction indicators as indicated on the wellsite diagram.

B. Caution signs shall be posted on roads providing access to location. Signs shall be painted a high visibility color with lettering of sufficient size to be readable at reasonable distances from potentially contaminated areas.

4. **Mud Program**

The mud program has been designed to minimize the amount of hydrogen sulfide entrained in the mud system. Proper mud weight, safe drilling practices, and the use of hydrogen sulfide scavengers will minimize hazards while drilling the well.

5. **Metallurgy**

All tubular systems, wellheads, blowout preventers, drilling spools, kill lines, choke manifolds, and valves shall be suitable for service in a hydrogen sulfide environment when chemically treated.

6. **Communications**

State & County officials' phone numbers are posted on rig floor and supervisors trailer. Communications in company vehicles and toolpushers are either two way radios or cellular phones.

7. **Well Testing**

Drill stem testing is not an anticipated requirement for evaluation of this well. A drill stem test is required and will be conducted with a minimum number of personnel in the immediate vicinity. The test will be conducted during daylight hours only.

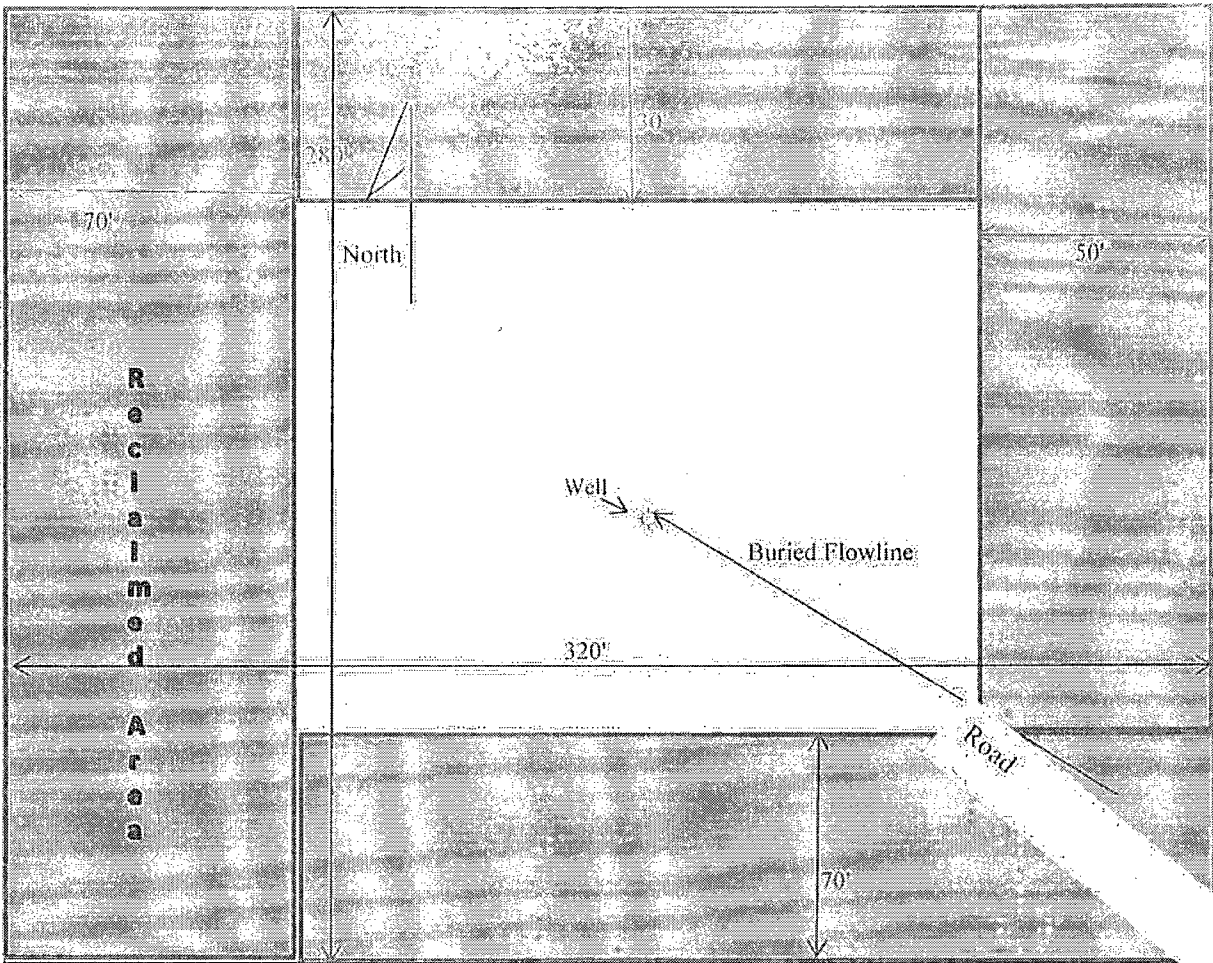
8. **Emergency Phone Numbers**

Lea County Sheriff's Office	911 or 575-396-3611
Ambulance Service	911 or 575-885-2111
Carlsbad Fire Dept	911 or 575-885-2111
Closest Medical Facility - Columbia Medical Center of Carlsbad	575-492-5000

Mewbourne Oil Company	Hobbs District Office	575-393-5905
	Fax	575-397-6252
	2 nd Fax	575-393-7259

District Manager	Micky Young	575-390-0999
Drilling Superintendent	Frosty Lathan	575-390-4103
	Bradley Bishop	575-390-6838
Drilling Foreman	Wesley Noseff	575-441-0729

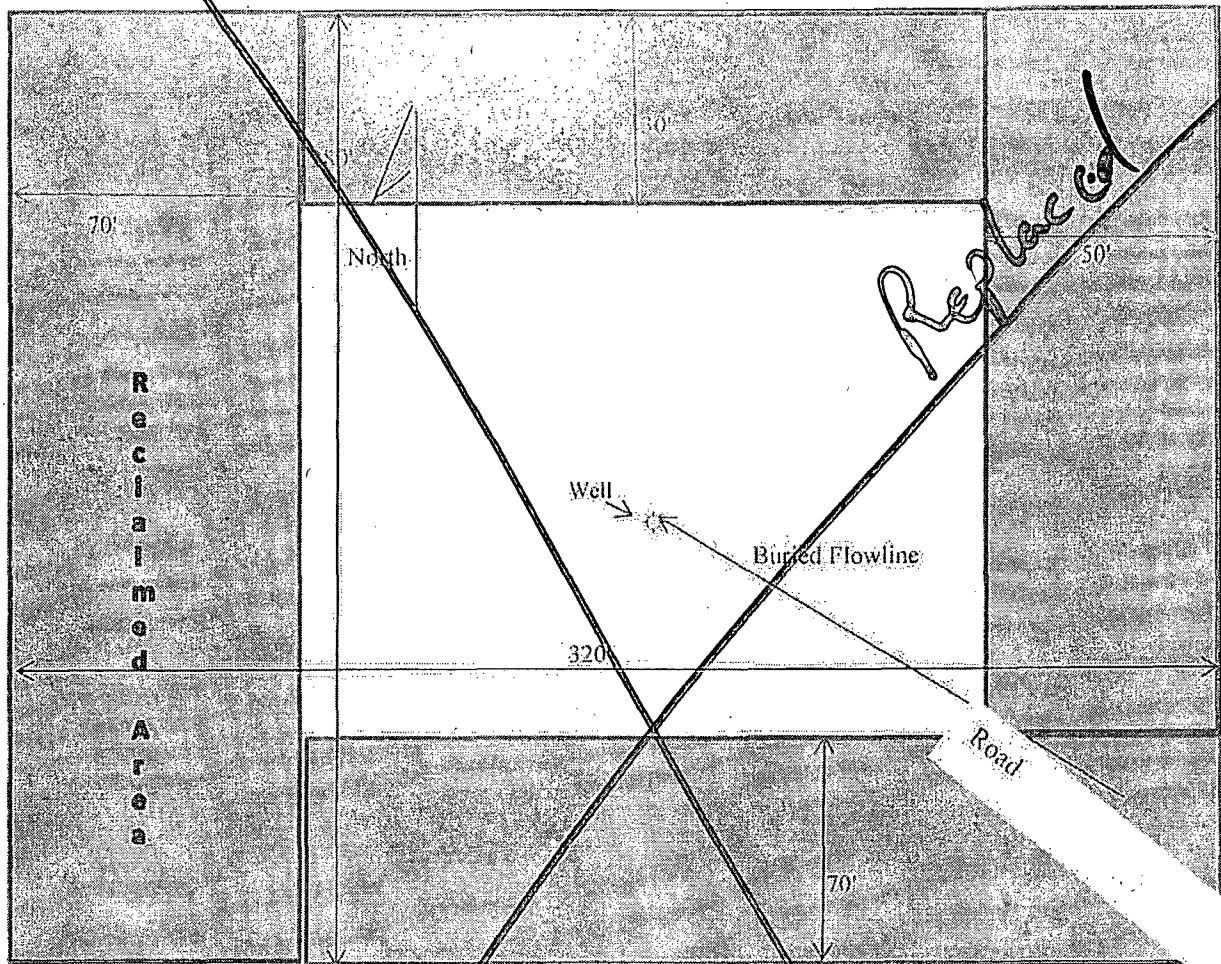
Closed Loop Pad Dimensions 280' x 320'



Mewbourne Oil Company
Glock 17 B2EH Fed #1H
2320' FNL & 170' FWL
Sec. 17 T20S R29E
Eddy Co. NM

Exhibit 5

Closed Loop Pad Dimensions 280' x 320'



Mewbourne Oil Company
Glock 17 B2EH Fed #1H
2320' FNL & 170' FWL
Sec. 17 T20S R29E
Eddy Co. NM

MULTI-POINT SURFACE USE AND OPERATIONS PLAN

MEWBOURNE OIL COMPANY

Glock 17 B2EH Federal #1H
2320' FNL & 170' FWL (SHL)
Sec 17-T20S-R29E
Eddy County, New Mexico

This plan is submitted with Form 3160-3, Application for Permit to Drill, Covering the above described well. The purpose of this plan is to describe the location of the proposed well, the proposed construction activities and operations plan, the magnitude of the surface disturbance involved, and the procedures to be followed in restoring the surface so that a complete appraisal can be made of the environmental impact associated with the proposed operations.

1. Existing Roads:

- A. Exhibit #3 is a road map showing the location of the proposed well. Existing roads are highlighted in black. Exhibits #3-#3C are maps showing the location of the proposed well and access road. Existing and proposed roads are highlighted in black.
- B. Directions to location: From the intersection of CR-238 (Burton Flats) and CR-243 (Magnum), go east on CR-238 approx. 0.8 miles to a lease road. Turn left and go north approx. 0.5 miles to a lease road. Turn right and go east approx. 0.2 miles to proposed road on left. Follow proposed road approx. 0.1 miles to location.
- C. Existing roads will be maintained in a condition the same as or better than before operations begin.

2. Proposed Access Road:

- A. Approx. 525.91 feet of new road construction will be needed.
- B. The maximum width of the driving surface will be 14 feet. The road will be crowned and ditched with a 2% slope from the tip of the crown to the edge of the driving surface. The ditches will be 1 foot deep with 3:1 slopes. The road will be surfaced with 6" of rolled and compacted caliche.
- C. Mewbourne Oil Co. will cooperate with other operators in the maintenance of lease roads.

3. Location of Existing Wells:

There are producing wells within the immediate vicinity of the well site. Exhibit #4 shows existing wells within a one mile radius of the surface location. Exhibit #4A shows existing wells within a one mile radius of the bottom-hole location.

4. Location of Existing and/or Proposed Facilities:

- A. There are no production facilities on this lease at the present time.
- B. In the event that the well is productive, flow lines will begin at the southeast corner of the Glock 17 B2EH Fed #1H well pad to the northeast corner of the Glock 17 IL Fed Com #1H well pad and continuing to the Glock 17 MP Fed Com #1H battery within 10 feet of the electric line poles to the west and following existing and proposed disturbances as shown in Exhibit "3E". Exhibits "3F", "3G", and "3H", show the re-route of approx. 964.46' of electric distribution line to the west of the well pad.
- C. All production vessels left on location will be painted to conform to BLM painting stipulations within 180 days of installation.

5. Location and Type of Water Supply

The well will be drilled with a combination of fresh water and brine water based mud systems. The water will be obtained from commercial suppliers in the area and/or hauled to the location by transport trucks over existing and proposed roads as indicated in Exhibit #3.

6. Source of Construction Materials

All material required for construction of the drill pad and access roads will be obtained from private, state, or federal pits. The construction contractor will be solely responsible for securing construction materials required for this operation and paying any royalties that may be required on those materials.

7. Methods of Handling Waste Disposal:

- A. Drill cuttings not retained for evaluation purposed will be hauled to an off-site permitted facility.
- B. Water produced during operations will be hauled to an off-site permitted SWD in the area.
- C. If any liquid hydrocarbons are produced during operations, those liquids will be stored in suitable tanks until sold.
- D. Sewage and gray water will be safely contained on-site, and then waste will be disposed at an approved off-site facility.
- E. All trash, junk, and other waste materials will be stored in proper containers to prevent dispersal and will be removed to an appropriate facility within one week of cessation of drilling and completion activities.
- F. MOC will utilize a closed loop system during drilling operations.

8. Ancillary Facilities

There are no ancillary facilities within the immediate vicinity of the proposed well site.

9. Well Site Layout

- A. A diagram of the drill pad is shown in Exhibit #6. Dimensions of the pad and location of major rig components are shown.
- B. The pad dimension of 280' x 320' has been staked and flagged.

10. Plans for Restoration of Surface

- A. Within 120 days of cessation of drilling and completion operations, all equipment not necessary for production operations will be removed. The location and surrounding area will be cleaned of all trash and junk to assure the well site is left as esthetically pleasing as reasonably possible.
- B. Interim reclamation:

- i. All areas not needed for production operations will be reclaimed as shown in the interim reclamation layout, exhibit #5.
 - ii. In these areas, caliche will be removed, the land will be recontoured to match the surrounding area and the topsoil from the stockpile will be spread over these areas.
 - iii. The disturbed area will be restored by seeding during the proper growing season.
 - iv. Any additional caliche required for production facilities will be obtained from the reclaimed areas.
- C. Final Reclamation:
- i. Upon cessation of the proposed operations, if the well is abandoned, all equipment and trash will be removed and taken to a proper facility.
 - ii. The location and road surfacing material will be removed and used to patch area lease roads.
 - iii. The entire location will be restored to the original contour as much as reasonable possible.
 - iv. The topsoil used for interim reclamation will be spread over the entire location.
 - v. The disturbed area will be restored by seeding during the proper growing season.

All restoration work will be completed within 180 days of cessation of activities.

11. Surface Ownership:

The surface is owned by BLM. Archaeology is cleared through BLM MOA program.

12. Other Information:

- A. The primary use of the surface at the location is for grazing of livestock.

13. Operators Representative:

- A. Through APD approval, drilling, completion and production operations:

N.M. Young, District Manager
Meybourne Oil Company
PO Box 5270
Hobbs, NM 88241
575-393-5905

PECOS DISTRICT CONDITIONS OF APPROVAL

OPERATOR'S NAME:	Mewbourne Oil Company
LEASE NO.:	NMNM-01165
WELL NAME & NO.:	Glock 17 B2EH Federal 1H
SURFACE HOLE FOOTAGE:	2320' FNL & 0170' FWL
BOTTOM HOLE FOOTAGE:	2100' FNL & 0330' FEL
LOCATION:	Section 17, T. 20 S., R 29 E., NMPM
COUNTY:	Eddy County, New Mexico

TABLE OF CONTENTS

Standard Conditions of Approval (COA) apply to this APD. If any deviations to these standards exist or special COAs are required, the section with the deviation or requirement will be checked below.

- ☐ **General Provisions**
- ☐ **Permit Expiration**
- ☐ **Archaeology, Paleontology, and Historical Sites**
- ☐ **Noxious Weeds**
- ☒ **Special Requirements**
 - Surface Pipeline Placement Requirement
 - Cave/Karst
- ☐ **Construction**
 - Notification
 - Topsoil
 - Closed Loop System
 - Federal Mineral Material Pits
 - Well Pads
 - Roads
- ☐ **Road Section Diagram**
- ☒ **Drilling**
 - Cement Requirements
 - H2S Requirements
 - High Cave/Karst
 - Capitan Reef
 - Logging Requirements
 - Waste Material and Fluids
- ☒ **Production (Post Drilling)**
 - Well Structures & Facilities
 - Pipelines
- ☐ **Interim Reclamation**
- ☐ **Final Abandonment & Reclamation**

I. GENERAL PROVISIONS

The approval of the Application For Permit To Drill (APD) is in compliance with all applicable laws and regulations: 43 Code of Federal Regulations 3160, the lease terms, Onshore Oil and Gas Orders, Notices To Lessees, New Mexico Oil Conservation Division (NMOCD) Rules, National Historical Preservation Act As Amended, and instructions and orders of the Authorized Officer. Any request for a variance shall be submitted to the Authorized Officer on Form 3160-5, Sundry Notices and Report on Wells.

II. PERMIT EXPIRATION

If the permit terminates prior to drilling and drilling cannot be commenced within 60 days after expiration, an operator is required to submit Form 3160-5, Sundry Notices and Reports on Wells, requesting surface reclamation requirements for any surface disturbance. However, if the operator will be able to initiate drilling within 60 days after the expiration of the permit, the operator must have set the conductor pipe in order to allow for an extension of 60 days beyond the expiration date of the APD. (Filing of a Sundry Notice is required for this 60 day extension.)

III. ARCHAEOLOGICAL, PALEONTOLOGY & HISTORICAL SITES

Any cultural and/or paleontological resource discovered by the operator or by any person working on the operator's behalf shall immediately report such findings to the Authorized Officer. The operator is fully accountable for the actions of their contractors and subcontractors. The operator shall suspend all operations in the immediate area of such discovery until written authorization to proceed is issued by the Authorized Officer. An evaluation of the discovery shall be made by the Authorized Officer to determine the appropriate actions that shall be required to prevent the loss of significant cultural or scientific values of the discovery. The operator shall be held responsible for the cost of the proper mitigation measures that the Authorized Officer assesses after consultation with the operator on the evaluation and decisions of the discovery. Any unauthorized collection or disturbance of cultural or paleontological resources may result in a shutdown order by the Authorized Officer.

IV. NOXIOUS WEEDS

The operator shall be held responsible if noxious weeds become established within the areas of operations. Weed control shall be required on the disturbed land where noxious weeds exist, which includes the roads, pads, associated pipeline corridor, and adjacent land affected by the establishment of weeds due to this action. The operator shall consult with the Authorized Officer for acceptable weed control methods, which include following EPA and BLM requirements and policies.

V. SPECIAL REQUIREMENT(S)

Surface Pipeline Placement Requirement:

The surface pipeline must be installed along existing roads and along the electric line route near the well pad. The pipeline must be installed no farther than 15 feet from existing roads and powerline (or future powerline routes).

Cave and Karst

****** Depending on location, additional Drilling, Casing, and Cementing procedures may be required by engineering to protect critical karst groundwater recharge areas.

Cave/Karst Surface Mitigation

The following stipulations will be applied to minimize impacts during construction, drilling and production.

Construction:

In the advent that any underground voids are opened up during construction activities, construction activities will be halted and the BLM will be notified immediately.

No Blasting:

No blasting will be utilized for pad construction. The pad will be constructed and leveled by adding the necessary fill and caliche.

Pad Berming:

The entire perimeter of the well pad will be bermed to prevent oil, salt, and other chemical contaminants from leaving the well pad.

- The compacted berm shall be constructed at a minimum of 12 inches high with impermeable mineral material (e.g. caliche).
- No water flow from the uphill side(s) of the pad shall be allowed to enter the well pad.
- The topsoil stockpile shall be located outside the bermed well pad.
- Topsoil, either from the well pad or surrounding area, shall not be used to construct the berm.
- No storm drains, tubing or openings shall be placed in the berm.
- If fluid collects within the bermed area, the fluid must be vacuumed into a safe container and disposed of properly at a state approved facility.
- The integrity of the berm shall be maintained around the surfaced pad throughout the life of the well and around the downsized pad after interim reclamation has been completed.

- Any access road entering the well pad shall be constructed so that the integrity of the berm height surrounding the well pad is not compromised. (Any access road crossing the berm cannot be lower than the berm height.)

Tank Battery Liners and Berms:

Tank battery locations will be lined and bermed. A 20 mil permanent liner will be installed with a 4 oz. felt backing to prevent tears or punctures. Tank battery berms must be large enough to contain 1 ½ times the content of the largest tank.

Leak Detection System:

A method of detecting leaks is required. The method could incorporate gauges to measure loss, siting valves and lines so they can be visually inspected, or installing electronic sensors to alarm when a leak is present. Leak detection plan will be submitted to BLM for approval.

Automatic Shut-off Systems:

Automatic shut off, check valves, or similar systems will be installed for pipelines and tanks to minimize the effects of catastrophic line failures used in production or drilling.

Cave/Karst Subsurface Mitigation

The following stipulations will be applied to protect cave/karst and ground water concerns:

Rotary Drilling with Fresh Water:

Fresh water will be used as a circulating medium in zones where caves or karst features are expected. SEE ALSO: Drilling COAs for this well.

Directional Drilling:

Kick off for directional drilling will occur at least 100 feet below the bottom of the cave occurrence zone. SEE ALSO: Drilling COAs for this well.

Lost Circulation:

ALL lost circulation zones from the surface to the base of the cave occurrence zone will be logged and reported in the drilling report.

Regardless of the type of drilling machinery used, if a void of four feet or more and circulation losses greater than 70 percent occur simultaneously while drilling in any cave-bearing zone, the BLM will be notified immediately by the operator. The BLM will assess the situation and work with the operator on corrective actions to resolve the problem.

Abandonment Cementing:

Upon well abandonment in high cave karst areas additional plugging conditions of approval may be required. The BLM will assess the situation and work with the operator to ensure proper plugging of the wellbore.

Pressure Testing:

Annual pressure monitoring will be performed by the operator on all casing annuli and reported in a sundry notice. If the test results indicated a casing failure has occurred, remedial action will be undertaken to correct the problem to the BLM's approval.

VI. CONSTRUCTION

A. NOTIFICATION

The BLM shall administer compliance and monitor construction of the access road and well pad. Notify the Carlsbad Field Office at (575) 234-5909 at least 3 working days prior to commencing construction of the access road and/or well pad.

When construction operations are being conducted on this well, the operator shall have the approved APD and Conditions of Approval (COA) on the well site and they shall be made available upon request by the Authorized Officer.

B. TOPSOIL

The operator shall strip the top portion of the soil (root zone) from the entire well pad area and stockpile the topsoil along the edge of the well pad as depicted in the APD. The root zone is typically six (6) inches in depth. All the stockpiled topsoil will be redistributed over the interim reclamation areas. Topsoil shall not be used for berming the pad or facilities. For final reclamation, the topsoil shall be spread over the entire pad area for seeding preparation.

Other subsoil (below six inches) stockpiles must be completely segregated from the topsoil stockpile. Large rocks or subsoil clods (not evident in the surrounding terrain) must be buried within the approved area for interim and final reclamation.

C. CLOSED LOOP SYSTEM

Tanks are required for drilling operations: No Pits.

The operator shall properly dispose of drilling contents at an authorized disposal site.

D. FEDERAL MINERAL MATERIALS PIT

Payment shall be made to the BLM prior to removal of any federal mineral materials. Call the Carlsbad Field Office at (575) 234-5972.

E. WELL PAD SURFACING

Surfacing of the well pad is not required.

If the operator elects to surface the well pad, the surfacing material may be required to be removed at the time of reclamation. The well pad shall be constructed in a manner which creates the smallest possible surface disturbance, consistent with safety and operational needs.

F. EXCLOSURE FENCING (CELLARS & PITS)

Exclosure Fencing

The operator will install and maintain exclosure fencing for all open well cellars to prevent access to public, livestock, and large forms of wildlife before and after drilling operations until the pit is free of fluids and the operator initiates backfilling. (For examples of exclosure fencing design, refer to BLM's Oil and Gas Gold Book, Exclosure Fence Illustrations, Figure 1, Page 18.)

G. ON LEASE ACCESS ROADS**Road Width**

The access road shall have a driving surface that creates the smallest possible surface disturbance and does not exceed fourteen (14) feet in width. The maximum width of surface disturbance, when constructing the access road, shall not exceed twenty-five (25) feet.

Surfacing

Surfacing material is not required on the new access road driving surface. If the operator elects to surface the new access road or pad, the surfacing material may be required to be removed at the time of reclamation.

Where possible, no improvements should be made on the unsurfaced access road other than to remove vegetation as necessary, road irregularities, safety issues, or to fill low areas that may sustain standing water.

The Authorized Officer reserves the right to require surfacing of any portion of the access road at any time deemed necessary. Surfacing may be required in the event the road deteriorates, erodes, road traffic increases, or it is determined to be beneficial for future field development. The surfacing depth and type of material will be determined at the time of notification.

Crowning

Crowning shall be done on the access road driving surface. The road crown shall have a grade of approximately 2% (i.e., a 1" crown on a 14' wide road). The road shall conform to Figure 1; cross section and plans for typical road construction.

Ditching

Ditching shall be required on both sides of the road.

Turnouts

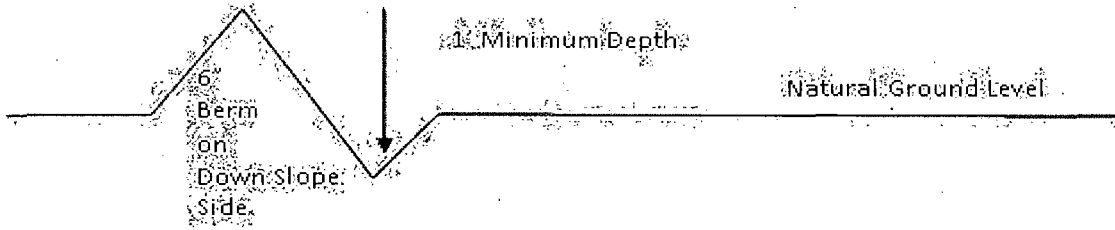
Vehicle turnouts shall be constructed on the road. Turnouts shall be intervisible with interval spacing distance less than 1000 feet. Turnouts shall conform to Figure 1; cross section and plans for typical road construction.

Drainage

Drainage control systems shall be constructed on the entire length of road (e.g. ditches, sidehill outslowing and insloping, lead-off ditches, culvert installation, and low water crossings).

A typical lead-off ditch has a minimum depth of 1 foot below and a berm of 6 inches above natural ground level. The berm shall be on the down-slope side of the lead-off ditch.

Cross Section of a Typical Lead-off Ditch



All lead-off ditches shall be graded to drain water with a 1 percent minimum to 3 percent maximum ditch slope. The spacing interval are variable for lead-off ditches and shall be determined according to the formula for spacing intervals of lead-off ditches, but may be amended depending upon existing soil types and centerline road slope (in %);

Formula for Spacing Interval of Lead-off Ditches

Example - On a 4% road slope that is 400 feet long, the water flow shall drain water into a lead-off ditch. Spacing interval shall be determined by the following formula:

$$400 \text{ foot road with } 4\% \text{ road slope: } \frac{400'}{4\%} + 100' = 200' \text{ lead-off ditch interval}$$

Cattleguards

An appropriately sized cattleguard sufficient to carry out the project shall be installed and maintained at fence/road crossings. Any existing cattleguards on the access road route shall be repaired or replaced if they are damaged or have deteriorated beyond practical use. The operator shall be responsible for the condition of the existing cattleguards that are in place and are utilized during lease operations.

Public Access

Public access on this road shall not be restricted by the operator without specific written approval granted by the Authorized Officer.

Construction Steps

1. Salvage topsoil
2. Construct road

3. Redistribute topsoil
4. Revegetate slopes

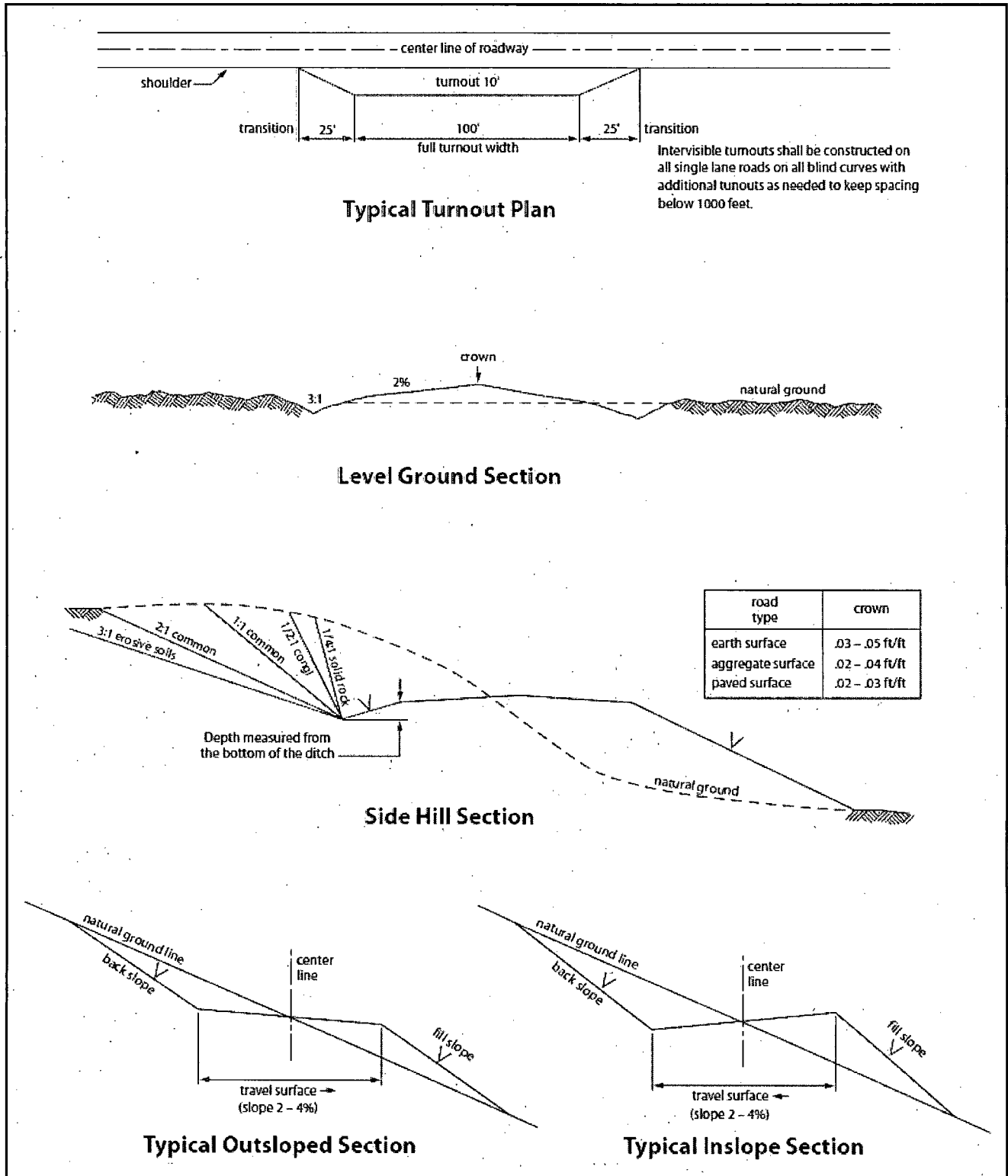


Figure 1. Cross-sections and plans for typical road sections representative of BLM resource or FS local and higher-class roads.

VII. DRILLING

A. DRILLING OPERATIONS REQUIREMENTS

The BLM is to be notified in advance for a representative to witness:

- a. Spudding well (minimum of 24 hours)
- b. Setting and/or Cementing of all casing strings (minimum of 4 hours)
- c. BOPE tests (minimum of 4 hours)

☒ **Eddy County**

Call the Carlsbad Field Office, 620 East Greene St., Carlsbad, NM 88220,
(575) 361-2822

1. A Hydrogen Sulfide (H₂S) Drilling Plan shall be activated 500 feet prior to drilling into the **Delaware** formation. **As a result, the Hydrogen Sulfide area must meet Onshore Order 6 requirements, which includes equipment and personnel/public protection items. If Hydrogen Sulfide is encountered, please provide measured values and formations to the BLM.**
2. Unless the production casing has been run and cemented or the well has been properly plugged, the drilling rig shall not be removed from over the hole without prior approval. **If the drilling rig is removed without approval – an Incident of Non-Compliance will be written and will be a “Major” violation.**
3. Floor controls are required for 3M or Greater systems. These controls will be on the rig floor, unobstructed, readily accessible to the driller and will be operational at all times during drilling and/or completion activities. Rig floor is defined as the area immediately around the rotary table; the area immediately above the substructure on which the draw works is located, this does not include the dog house or stairway area.
4. **The record of the drilling rate along with the GR/N well log run from TD to surface (horizontal well – vertical portion of hole) shall be submitted to the BLM office as well as all other logs run on the borehole 30 days from completion. If available, a digital copy of the logs is to be submitted in addition to the paper copies. The Rustler top and top and bottom of Salt are to be recorded on the Completion Report.**

B. CASING

Changes to the approved APD casing program need prior approval if the items substituted are of lesser grade or different casing size or are Non-API. The Operator can exchange the components of the proposal with that of superior strength (i.e. changing from J-55 to N-80, or from 36# to 40#). Changes to the approved cement program need prior approval if the altered cement plan has less volume or strength or if the changes are substantial (i.e. Multistage tool, ECP, etc.). The initial wellhead installed on the well will remain on the well with spools used as needed.

Centralizers required on surface casing per Onshore Order 2.III.B.1.f.

Wait on cement (WOC) time prior to drilling out for a primary cement job will be a minimum 18 hours for a water basin, 24 hours in the potash area, or 500 pounds compressive strength, whichever is greater for all casing strings. DURING THIS WOC TIME, NO DRILL PIPE, ETC. SHALL BE RUN IN THE HOLE. Provide compressive strengths including hours to reach required 500 pounds compressive strength prior to cementing each casing string. IF OPERATOR DOES NOT HAVE THE WELL SPECIFIC CEMENT DETAILS ONSITE PRIOR TO PUMPING THE CEMENT FOR EACH CASING STRING, THE WOC WILL BE 30 HOURS. See individual casing strings for details regarding lead cement slurry requirements.

No pea gravel permitted for remedial or fall back remedial without prior authorization from the BLM engineer.

High Cave/Karst

Capitan Reef

Possible water flows in the Artesia Group, Salado, and Queen.

Possible lost circulation in the Artesia Group, Rustler, Capitan Reef, and Delaware.

A MINIMUM OF TWO CASING STRINGS CEMENTED TO SURFACE IS REQUIRED IN HIGH CAVE/KARST AREAS. THE CEMENT MUST BE IN A SOLID SHEATH. THEREFORE, ONE INCH OPERATIONS ARE NOT SUFFICIENT TO PROTECT CAVE KARST RESOURCES. A CASING DESIGN THAT HAS A ONE INCH JOB PERFORMED DOES NOT COUNT AS A SOLID SHEATH.

1. The 20 inch surface casing shall be set at approximately 375 feet (a minimum of 25 feet into the Rustler Anhydrite and above the salt) and cemented to the surface. **If salt is encountered, set casing at least 25 feet above the salt. Excess calculates to negative 4% - Additional cement will be required.**
 - a. If cement does not circulate to the surface, the appropriate BLM office shall be notified and a temperature survey utilizing an electronic type temperature survey with surface log readout will be used or a cement bond log shall be run to verify the top of the cement. Temperature survey will be run a minimum of six hours after pumping cement and ideally between 8-10 hours after completing the cement job.
 - b. **Wait on cement (WOC) time for a primary cement job is to include the lead cement slurry.**
 - c. Wait on cement (WOC) time for a remedial job will be a minimum of 4 hours after bringing cement to surface or 500 pounds compressive strength, whichever is greater.
 - d. If cement falls back, remedial cementing will be done prior to drilling out that string.

13-3/8 Intermediate casing shall be kept fluid filled while running into hole to meet BLM minimum collapse requirements.

2. The minimum required fill of cement behind the 13-3/8 inch 1st intermediate casing is:
 - ☒ Cement to surface. If cement does not circulate see B.1.a, c-d above. **Wait on cement (WOC) time for a primary cement job is to include the lead cement slurry due to cave/karst. Excess calculates to negative 7% - Additional cement will be required.**

3. The minimum required fill of cement behind the 9-5/8 inch 2nd intermediate casing is:

Option #1:

- ☒ Cement to surface. If cement does not circulate see B.1.a, c-d above. **Wait on cement (WOC) time for a primary cement job is to include the lead cement slurry due to cave/karst and Capitan Reef. Excess calculates to 14% - Additional cement may be required.**

Option #2:

Operator has proposed DV tool at depth of 1500'. Operator is to submit sundry if DV tool depth varies by more than 100' from approved depth.

a. First stage to DV tool:

- ☒ Cement to circulate. If cement does not circulate, contact the appropriate BLM office before proceeding with second stage cement job. Operator should have plans as to how they will achieve circulation on the next stage.

b. Second stage above DV tool:

- ☒ Cement to surface. If cement does not circulate see B.1.a, c-d above. **Wait on cement (WOC) time for a primary cement job is to include the lead cement slurry due to cave/karst and Capitan Reef. Excess calculates to 12% - Additional cement may be required.**

Centralizers required on horizontal leg, must be type for horizontal service and a minimum of one every other joint.

4. The minimum required fill of cement behind the 5-1/2 inch production casing is:

- ☒ Cement should tie-back at least **50 feet above the Capitan Reef** (Top of Capitan Reef estimated at 1374'). Operator shall provide method of verification.

5. If hardband drill pipe is rotated inside casing, returns will be monitored for metal. If metal is found in samples, drill pipe will be pulled and rubber protectors which have a larger diameter than the tool joints of the drill pipe will be installed prior to continuing drilling operations.

C. PRESSURE CONTROL

1. All blowout preventer (BOP) and related equipment (BOPE) shall comply with well control requirements as described in Onshore Oil and Gas Order No. 2 and API RP 53 Sec. 17.
2. **A variance is granted for the use of a diverter on the 20" surface casing.**
3. Minimum working pressure of the blowout preventer (BOP) and related equipment (BOPE) required for drilling below the 1st intermediate casing shoe shall be **2000 (2M) psi (Installing a 2M annular).**

4. Minimum working pressure of the blowout preventer (BOP) and related equipment (BOPE) required for drilling below the 9-5/8 2nd intermediate casing shoe shall be **3000 (3M) psi**.
5. The appropriate BLM office shall be notified a minimum of 4 hours in advance for a representative to witness the tests.
 - a. In a water basin, for all casing strings utilizing slips, these are to be set as soon as the crew and rig are ready and any fallback cement remediation has been done. The casing cut-off and BOP installation can be initiated four hours after installing the slips, which will be approximately six hours after bumping the plug. For those casing strings not using slips, the minimum wait time before cut-off is eight hours after bumping the plug. BOP/BOPE testing can begin after cut-off or once cement reaches 500 psi compressive strength (including lead when specified), whichever is greater. However, if the float does not hold, cut-off cannot be initiated until cement reaches 500 psi compressive strength (including lead when specified).
 - b. The tests shall be done by an independent service company utilizing a test plug **not a cup or J-packer**.
 - c. The test shall be run on a 5000 psi chart for a 2-3M BOP/BOP, on a 10000 psi chart for a 5M BOP/BOPE and on a 15000 psi chart for a 10M BOP/BOPE. If a linear chart is used, it shall be a one hour chart. A circular chart shall have a maximum 2 hour clock. If a twelve hour or twenty-four hour chart is used, tester shall make a notation that it is run with a two hour clock.
 - d. The results of the test shall be reported to the appropriate BLM office.
 - e. All tests are required to be recorded on a calibrated test chart. **A copy of the BOP/BOPE test chart and a copy of independent service company test will be submitted to the appropriate BLM office.**
 - f. The BOP/BOPE test shall include a low pressure test from 250 to 300 psi. The test will be held for a minimum of 10 minutes if test is done with a test plug and 30 minutes without a test plug. This test shall be performed prior to the test at full stack pressure.

D. DRILL STEM TEST

If drill stem tests are performed, Onshore Order 2.III.D shall be followed.

E. WASTE MATERIAL AND FLUIDS

All waste (i.e. drilling fluids, trash, salts, chemicals, sewage, gray water, etc.) created as a result of drilling operations and completion operations shall be safely contained and disposed of properly at a waste disposal facility. No waste material or fluid shall be disposed of on the well location or surrounding area.

Porto-johns and trash containers will be on-location during fracturing operations or any other crew-intensive operations.

JAM 091814

VIII. PRODUCTION (POST DRILLING)

A. WELL STRUCTURES & FACILITIES

Placement of Production Facilities

Production facilities should be placed on the well pad to allow for maximum interim recontouring and revegetation of the well location.

Exclosure Netting (Open-top Tanks)

Immediately following active drilling or completion operations, the operator will take actions necessary to prevent wildlife and livestock access, including avian wildlife, to all open-topped tanks that contain or have the potential to contain salinity sufficient to cause harm to wildlife or livestock, hydrocarbons, or Resource Conservation and Recovery Act of 1976-exempt hazardous substances. At a minimum, the operator will net, screen, or cover open-topped tanks to exclude wildlife and livestock and prevent mortality. If the operator uses netting, the operator will cover and secure the open portion of the tank to prevent wildlife entry. The operator will net, screen, or cover the tanks until the operator removes the tanks from the location or the tanks no longer contain substances that could be harmful to wildlife or livestock. Use a maximum netting mesh size of 1 ½ inches. The netting must not be in contact with fluids and must not have holes or gaps.

Chemical and Fuel Secondary Containment and Exclosure Screening

The operator will prevent all hazardous, poisonous, flammable, and toxic substances from coming into contact with soil and water. At a minimum, the operator will install and maintain an impervious secondary containment system for any tank or barrel containing hazardous, poisonous, flammable, or toxic substances sufficient to contain the contents of the tank or barrel and any drips, leaks, and anticipated precipitation. The operator will dispose of fluids within the containment system that do not meet applicable state or U. S. Environmental Protection Agency livestock water standards in accordance with state law; the operator must not drain the fluids to the soil or ground. The operator will design, construct, and maintain all secondary containment systems to prevent wildlife and livestock exposure to harmful substances. At a minimum, the operator will install effective wildlife and livestock exclosure systems such as fencing, netting, expanded metal mesh, lids, and grate covers. Use a maximum netting mesh size of 1 ½ inches.

Open-Vent Exhaust Stack Exclosures

The operator will construct, modify, equip, and maintain all open-vent exhaust stacks on production equipment to prevent birds and bats from entering, and to discourage perching, roosting, and nesting. (*Recommended exclosure structures on open-vent exhaust stacks are in the shape of a cone.*) Production equipment includes, but may not be limited to, tanks, heater-treaters, separators, dehydrators, flare stacks, in-line units, and compressor mufflers.

Containment Structures

Proposed production facilities such as storage tanks and other vessels will have a secondary containment structure that is constructed to hold the capacity of 1.5 times the

largest tank, plus freeboard to account for precipitation, unless more stringent protective requirements are deemed necessary.

Painting Requirement

All above-ground structures including meter housing that are not subject to safety requirements shall be painted a flat non-reflective paint color, **Shale Green** from the BLM Standard Environmental Color Chart (CC-001: June 2008).

B. PIPELINES

STANDARD STIPULATIONS FOR SURFACE INSTALLED PIPELINES

A copy of the application (Grant, Sundry Notice, APD) and attachments, including stipulations, survey plat and/or map, will be on location during construction. BLM personnel may request to you a copy of your permit during construction to ensure compliance with all stipulations.

Holder agrees to comply with the following stipulations to the satisfaction of the Authorized Officer:

1. The holder shall indemnify the United States against any liability for damage to life or property arising from the occupancy or use of public lands under this grant.

2. The holder shall comply with all applicable Federal laws and regulations existing or hereafter enacted or promulgated. In any event, the holder shall comply with the Toxic Substances Control Act of 1976 as amended, 15 USC 2601 et seq. (1982) with regards to any toxic substances that are used, generated by or stored on the right-of-way or on facilities authorized under this right-of-way grant. (See 40 CFR, Part 702-799 and especially, provisions on polychlorinated biphenyls, 40 CFR 761.1-761.193.) Additionally, any release of toxic substances (leaks, spills, etc.) in excess of the reportable quantity established by 40 CFR, Part 117 shall be reported as required by the Comprehensive Environmental Response, Compensation, and Liability Act, section 102b. A copy of any report required or requested by any Federal agency or State government as a result of a reportable release or spill of any toxic substances shall be furnished to the authorized officer concurrent with the filing of the reports to the involved Federal agency or State government.

3. The holder agrees to indemnify the United States against any liability arising from the release of any hazardous substance or hazardous waste (as these terms are defined in the Comprehensive Environmental Response, Compensation and Liability Act of 1980, 42 U.S.C. 9601, et seq. or the Resource Conservation and Recovery Act, 42 U.S.C. 6901, et seq.) on the Right-of-Way (unless the release or threatened release is wholly unrelated to activity of the Right-of-Way holder's activity on the Right-of-Way), or resulting from the activity of the Right-of-Way holder on the Right-of-Way. This agreement applies without regard to whether a release is caused by the holder, its agent, or unrelated third parties.

4. The holder shall be liable for damage or injury to the United States to the extent provided by 43 CFR Sec. 2883.1-4. The holder shall be held to a standard of strict liability for damage or injury to the United States resulting from pipe rupture, fire, or spills caused or substantially aggravated by any of the following within the right-of-way or permit area:

- a. Activities of the holder including, but not limited to construction, operation, maintenance, and termination of the facility.
- b. Activities of other parties including, but not limited to:
 - (1) Land clearing.
 - (2) Earth-disturbing and earth-moving work.
 - (3) Blasting.
 - (4) Vandalism and sabotage.
- c. Acts of God.

The maximum limitation for such strict liability damages shall not exceed one million dollars (\$1,000,000) for any one event, and any liability in excess of such amount shall be determined by the ordinary rules of negligence of the jurisdiction in which the damage or injury occurred.

This section shall not impose strict liability for damage or injury resulting primarily from an act of war or from the negligent acts or omissions of the United States.

5. If, during any phase of the construction, operation, maintenance, or termination of the pipeline, any oil, salt water, or other pollutant should be discharged from the pipeline system, impacting Federal lands, the control and total removal, disposal, and cleaning up of such oil, salt water, or other pollutant, wherever found, shall be the responsibility of the holder, regardless of fault. Upon failure of the holder to control, dispose of, or clean up such discharge on or affecting Federal lands, or to repair all damages resulting therefrom, on the Federal lands, the Authorized Officer may take such measures as he deems necessary to control and clean up the discharge and restore the area, including, where appropriate, the aquatic environment and fish and wildlife habitats, at the full expense of the holder. Such action by the Authorized Officer shall not relieve the holder of any responsibility as provided herein.

6. All construction and maintenance activity will be confined to the authorized right-of-way width of 20 feet. If the pipeline route follows an existing road or buried pipeline right-of-way, the surface pipeline must be installed no farther than 10 feet from the edge of the road or buried pipeline right-of-way. If existing surface pipelines prevent this distance, the proposed surface pipeline must be installed immediately adjacent to the outer surface pipeline. All construction and maintenance activity will be confined to existing roads or right-of-ways.

7. No blading or clearing of any vegetation will be allowed unless approved in writing by the Authorized Officer.

8. The holder shall install the pipeline on the surface in such a manner that will minimize suspension of the pipeline across low areas in the terrain. In hummocky or dune areas, the pipeline will be "snaked" around hummocks and dunes rather than suspended across these features.

9. The pipeline shall be buried with a minimum of 24 inches under all roads, "two-tracks," and trails. Burial of the pipe will continue for 20 feet on each side of each crossing. The condition of the road, upon completion of construction, shall be returned to at least its former state with no bumps or dips remaining in the road surface.

10. The holder shall minimize disturbance to existing fences and other improvements on public lands. The holder is required to promptly repair improvements to at least their former state. Functional use of these improvements will be maintained at all times. The holder will contact the owner of any improvements prior to disturbing them. When necessary to pass through a fence line, the fence shall be braced on both sides of the passageway prior to cutting of the fence. No permanent gates will be allowed unless approved by the Authorized Officer.

11. In those areas where erosion control structures are required to stabilize soil conditions, the holder will install such structures as are suitable for the specific soil conditions being encountered and which are in accordance with sound resource management practices.

12. Excluding the pipe, all above-ground structures not subject to safety requirement shall be painted by the holder to blend with the natural color of the landscape. The paint used shall be a color which simulates "Standard Environmental Colors" – **Shale Green**, Munsell Soil Color No. 5Y 4/2; designated by the Rocky Mountain Five State Interagency Committee.

13. The pipeline will be identified by signs at the point of origin and completion of the right-of-way and at all road crossings. At a minimum, signs will state the holder's name, BLM serial number, and the product being transported. Signs will be maintained in a legible condition for the life of the pipeline.

14. The holder shall not use the pipeline route as a road for purposes other than routine maintenance as determined necessary by the Authorized Officer in consultation with the holder. The holder will take whatever steps are necessary to ensure that the pipeline route is not used as a roadway.

15. Any cultural and/or paleontological resource (historic or prehistoric site or object) discovered by the holder, or any person working on his behalf, on public or Federal land shall be immediately reported to the authorized officer. Holder shall suspend all operations in the immediate area of such discovery until written authorization to proceed is issued by the authorized officer. An evaluation of the discovery will be made by the authorized officer to determine appropriate cultural or scientific values. The holder will

be responsible for the cost of evaluation and any decision as to proper mitigation measures will be made by the authorized officer after consulting with the holder.

16. The operator shall be held responsible if noxious weeds become established within the areas of operations. Weed control shall be required on the disturbed land where noxious weeds exist, which includes the roads, powerline corridor, and adjacent land affected by the establishment of weeds due to this action. The operator shall consult with the Authorized Officer for acceptable weed control methods, which include following EPA and BLM requirements and policies.

17. Surface pipelines must be less than or equal to 4 inches and a working pressure below 125 psi.

IX. INTERIM RECLAMATION

During the life of the development, all disturbed areas not needed for active support of production operations should undergo interim reclamation in order to minimize the environmental impacts of development on other resources and uses.

Within six (6) months of well completion, operators should work with BLM surface management specialists (Jim Amos: 575-234-5909) to devise the best strategies to reduce the size of the location. Interim reclamation should allow for remedial well operations, as well as safe and efficient removal of oil and gas.

During reclamation, the removal of caliche is important to increasing the success of revegetating the site. Removed caliche that is free of contaminants may be used for road repairs, fire walls or for building other roads and locations. In order to operate the well or complete workover operations, it may be necessary to drive, park and operate on restored interim vegetation within the previously disturbed area. Disturbing revegetated areas for production or workover operations will be allowed. If there is significant disturbance and loss of vegetation, the area will need to be revegetated. Communicate with the appropriate BLM office for any exceptions/exemptions if needed.

All disturbed areas after they have been satisfactorily prepared need to be reseeded with the seed mixture provided below.

Upon completion of interim reclamation, the operator shall submit a Sundry Notices and Reports on Wells, Subsequent Report of Reclamation (Form 3160-5).

X. FINAL ABANDONMENT & RECLAMATION

At final abandonment, well locations, production facilities, and access roads must undergo "final" reclamation so that the character and productivity of the land are restored.

Earthwork for final reclamation must be completed within six (6) months of well plugging. All pads, pits, facility locations and roads must be reclaimed to a satisfactory revegetated, safe, and stable condition, unless an agreement is made with the landowner or BLM to keep the road and/or pad intact.

After all disturbed areas have been satisfactorily prepared, these areas need to be revegetated with the seed mixture provided below. Seeding should be accomplished by drilling on the contour whenever practical or by other approved methods. Seeding may need to be repeated until revegetation is successful, as determined by the BLM.

Operators shall contact a BLM surface protection specialist prior to surface abandonment operations for site specific objectives (Jim Amos: 575-234-5909).

Seed Mixture 2, for Sandy Sites

The holder shall seed all disturbed areas with the seed mixture listed below. The seed mixture shall be planted in the amounts specified in pounds of pure live seed (PLS)* per acre. There shall be no primary or secondary noxious weeds in the seed mixture. Seed will be tested and the viability testing of seed will be done in accordance with State law (s) and within nine (9) months prior to purchase. Commercial seed will be either certified or registered seed. The seed container will be tagged in accordance with State law(s) and available for inspection by the authorized officer.

Seed will be planted using a drill equipped with a depth regulator to ensure proper depth of planting where drilling is possible. The seed mixture will be evenly and uniformly planted over the disturbed area (smaller/heavier seeds have a tendency to drop the bottom of the drill and are planted first). The holder shall take appropriate measures to ensure this does not occur. Where drilling is not possible, seed will be broadcast and the area shall be raked or chained to cover the seed. When broadcasting the seed, the pounds per acre are to be doubled. The seeding will be repeated until a satisfactory stand is established as determined by the authorized officer. Evaluation of growth will not be made before completion of at least one full growing season after seeding.

Species to be planted in pounds of pure live seed* per acre:

<u>Species</u>	<u>lb/acre</u>
Sand dropseed (<i>Sporobolus cryptandrus</i>)	1.0
Sand love grass (<i>Eragrostis trichodes</i>)	1.0
Plains bristlegrass (<i>Setaria macrostachya</i>)	2.0

*Pounds of pure live seed:

Pounds of seed x percent purity x percent germination = pounds pure live seed