

DISTRICT I
1825 N. French Dr., Hobbs, NM 88240
Phone (575) 393-5161 Fax: (575) 393-0720

DISTRICT II
811 S. First St., Artesia, NM 88210
Phone (505) 746-1283 Fax: (505) 746-9720

DISTRICT III
1000 Rio Brazos Rd., Aztec, NM 87410
Phone (505) 334-6178 Fax: (505) 334-6170

DISTRICT IV
1224 S. St. Francis Dr., Santa Fe, NM 87505
Phone (505) 476-3460 Fax: (505) 476-3462

State of New Mexico
Energy, Minerals and Natural Resources Department



CONFIDENTIAL

Form C-102
Revised August 1, 2011

Submit one copy to appropriate
District Office

OIL CONSERVATION DIVISION

1224 South St. Francis Dr.
Santa Fe, New Mexico 87505

WELL LOCATION AND ACREAGE DEDICATION PLAT

AMENDED REPORT
As Drilled

API Number 30-015-42488	Pool Code 96047	Pool Name Poker Lake; Delaware, SW
Property Code 306402	Property Name POKER LAKE UNIT	Well Number 432H
OGRID No. 260737	Operator Name BOPCO, L.P.	Elevation 3402

Surface Location

UL or lot No.	Section	Township	Range	Lot Idn	FEET from the	North/South line	FEET from the	East/West line	County
M	23	24 S	30 E		900	SOUTH	300	WEST	EDDY

Bottom Hole Location If Different From Surface

UL or lot No.	Section	Township	Range	Lot Idn	FEET from the	North/South line	FEET from the	East/West line	County
I	16	24 S	30 E		2115	SOUTH	636	EAST	EDDY

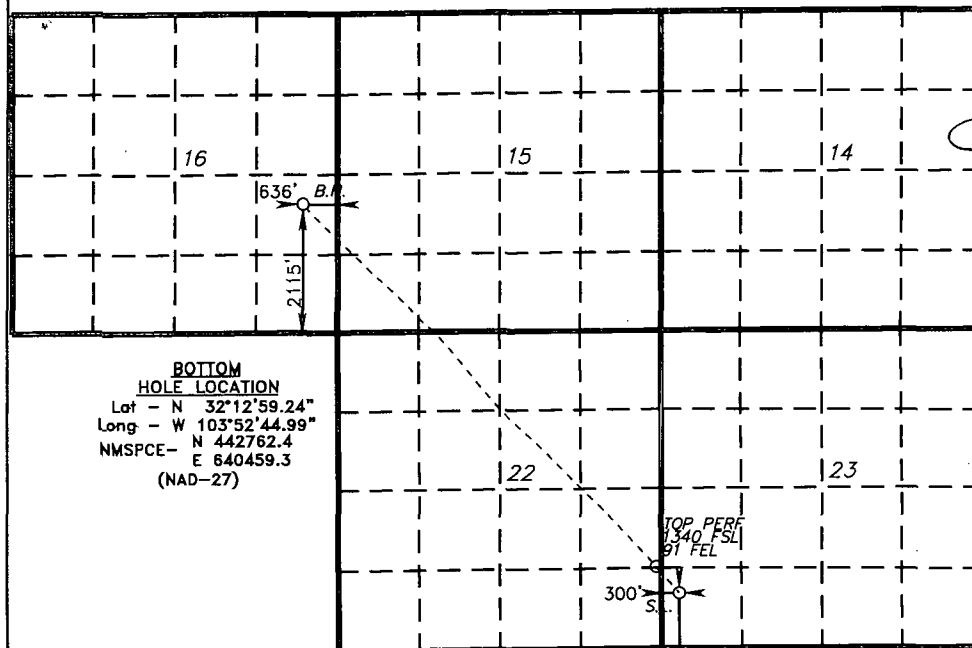
Dedicated Acres 640	Joint or Infill	Consolidation Code	Order No.
------------------------	-----------------	--------------------	-----------

NO ALLOWABLE WILL BE ASSIGNED TO THIS COMPLETION UNTIL
OR NON-STANDARD UNIT HAD

RESTS HAVE BEEN CONSOLIDATED
THE DIVISION

"Denied"

Designate acreage to be subsequently
dedicated to the well and resubmit



**BOTTOM
HOLE LOCATION**
Lat - N 32°12'59.24"
Long - W 103°52'44.99"
NMSPC- N 442762.4
E 640459.3
(NAD-27)

SURFACE LOCATION
Lat - N 32°11'54.54"
Long - W 103°51'31.85"
NMSPC- N 436251.4
E 648771.6
(NAD-27)

OPERATOR CERTIFICATION

I hereby certify that the information
contained herein is true and complete to
the best of my knowledge and belief, and that
this organization either owns a working
interest or unleased mineral interest in the
land including the proposed bottom hole
location or has a right to drill this well at
this location pursuant to a contract with an
owner of such a mineral or working interest,
or to a voluntary pooling agreement or a
compulsory pooling order heretofore entered by
the division.

Signature *Tracie J Cherry* Date 11/04/14

Tracie J Cherry

Printed Name
tjcherry@basspet.com

Email Address

SURVEYOR CERTIFICATION

I hereby certify that the well location shown
on this plat was plotted from field notes of
actual surveys made by me or under my
supervision and that the same is true and
correct to the best of my belief.

DECEMBER 30, 2013

Date Surveyed

Signature & Seal of
Professional Surveyor

Certificate No. 7977

0' 1500' 3000' 4500' 6000'
SCALE: 1" = 3000'
WO Num.: 29923