

# NM OIL CONSERVATION

ARTESIA DISTRICT

District I  
1625 N. French Dr., Hobbs, NM 88240  
District II  
1301 W. Grand Avenue, Artesia, NM 88210  
District III  
1000 Rio Brazos Rd., Aztec, NM 87410  
District IV  
1220 S. St. Francis Dr., Santa Fe, NM 87505

State of New Mexico  
Energy, Minerals & Natural Resources Department  
OIL CONSERVATION DIVISION  
1220 South St. Francis Dr.  
Santa Fe, NM 87505

NOV 14 2014

Form C-102  
Revised October 12, 2005  
Submit to Appropriate District Office  
State Lease- 4 Copies  
Fee Lease- 3 Copies

RECEIVED

☒ AMENDED REPORT  
As Directed

## WELL LOCATION AND ACREAGE DEDICATION PLAT

|                                   |   |   |
|-----------------------------------|---|---|
| API Number<br><b>30-015-41657</b> | Pool Code<br><b>96046</b>                   | Pool Name<br><b>Poker Lake Delaware, NW</b> |
| Property Code<br><b>39655</b>     | Property Name<br><b>NIMITZ "12" FEDERAL</b> | Well Number<br><b>5H</b>                    |
| GRID No.<br><b>16694</b>          | Operator Name<br><b>OXY USA INC.</b>        | Elevation<br><b>3497.9'</b>                 |

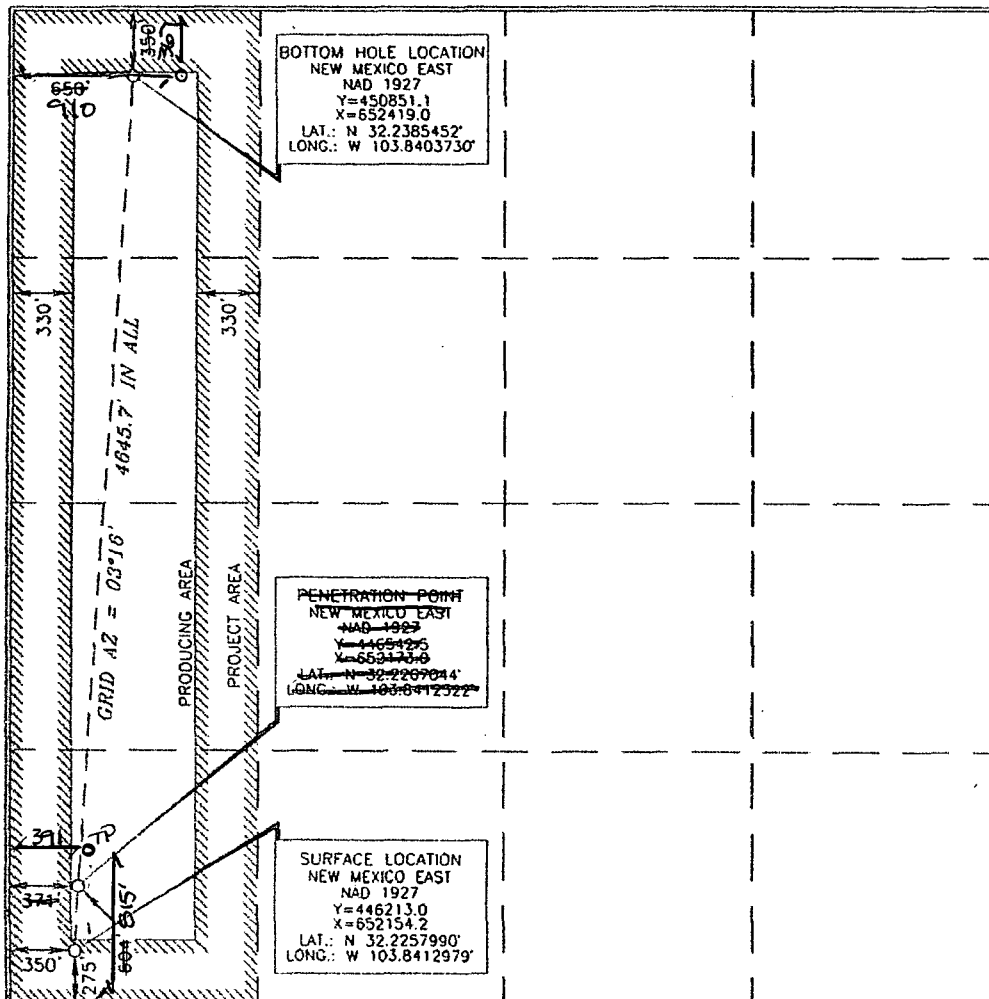
### Surface Location

| UL or lot no. | Section   | Township        | Range                    | Lot Idn | Feet from the | North/South line | Feet from the | East/West line | County      |
|---------------|-----------|-----------------|--------------------------|---------|---------------|------------------|---------------|----------------|-------------|
| <b>M</b>      | <b>12</b> | <b>24 SOUTH</b> | <b>30 EAST, N.M.P.M.</b> |         | <b>275'</b>   | <b>SOUTH</b>     | <b>350'</b>   | <b>WEST</b>    | <b>EDDY</b> |

### Bottom Hole Location If Different From Surface

| UL or lot no.                 | Section   | Township                    | Range                    | Lot Idn                                     | Feet from the             | North/South line | Feet from the             | East/West line | County      |
|-------------------------------|-----------|-----------------------------|--------------------------|---|---------------------------|------------------|---------------------------|----------------|-------------|
| <b>D</b>                      | <b>12</b> | <b>24 SOUTH</b>             | <b>30 EAST, N.M.P.M.</b> |   | <b>350'</b><br><b>367</b> | <b>NORTH</b>     | <b>650'</b><br><b>910</b> | <b>WEST</b>    | <b>EDDY</b> |
| Dedicated Acres<br><b>160</b> |           | Joint or Infill<br><b>N</b> | Consolidation Code       | Order No. <b>Top Pent - B15 FNL 391 FWL</b> |                           |                  |                           |                |             |

No allowable will be assigned to this completion until all interests have been consolidated or a non-standard unit has been approved by the division.



### OPERATOR CERTIFICATION

I hereby certify that the information contained herein is true and complete to the best of my knowledge and belief, and that this organization either owns a working interest or unleased mineral interest in the land including the proposed bottom hole location or has a right to drill this well at this location pursuant to a contract with an owner of such a mineral or working interest, or to a voluntary pooling agreement or a compulsory pooling order heretofore entered by the division.

*David Stewart* 5/22/13  
Signature Date

David Stewart Sr. Pres. Adv.  
Printed Name

### SURVEYOR CERTIFICATION

I hereby certify that the well location shown on this plat was plotted from field notes of previous surveys made by me or under my supervision, and that the same is true and correct to the best of my belief.

MARCH 13, 2014  
Date of Survey

Signature and Seal of Professional Surveyor:

*Terry J. Paul* 4/25/2012  
Certificate Number 15079

WO# 120313WL (KA)