

District I  
1625 N. French Dr., Hobbs, NM 88240  
Phone: (575) 393-6161 Fax: (575) 399-1000  
District II  
811 S. First St., Artesia, NM 88210  
Phone: (575) 748-1283 Fax: (575) 748-9720  
District III  
1000 Rio Brazos Road, Aztec, NM 87410  
Phone: (505) 334-6178 Fax: (505) 334-6170  
District IV  
1220 S. St. Francis Dr., Santa Fe, NM 87505  
Phone: (505) 476-3460 Fax: (505) 476-3462

State of New Mexico

Form C-101  
Revised July 18, 2013

**NM OIL CONSERVATION**  
ARTESIA DISTRICT Energy Minerals and Natural Resources

NOV 20 2014

Oil Conservation Division

AMENDED REPORT

1220 South St. Francis Dr.

RECEIVED

Santa Fe, NM 87505

**APPLICATION FOR PERMIT TO DRILL, RE-ENTER, DEEPEN, PLUGBACK, OR ADD A ZONE**

<sup>1</sup> Operator Name and Address Great Western Drilling Company 700 W. Louisiana Midland, TX 79701		<sup>2</sup> OGRID Number 9338
		<sup>3</sup> API Number 30-015-20169
<sup>4</sup> Property Code 313916	<sup>5</sup> Property Name Thorpe Sears SWD	<sup>6</sup> Well No. 001

<sup>7</sup> Surface Location

UL - Lot	Section	Township	Range	Lot Idn	Feet from	N/S Line	Feet From	E/W Line	County
P	18	18S	26S		1094	South	913	East	Eddy

<sup>8</sup> Proposed Bottom Hole Location

UL - Lot	Section	Township	Range	Lot Idn	Feet from	N/S Line	Feet From	E/W Line	County

<sup>9</sup> Pool Information

Pool Name SWD; Devonian	Pool Code 96101
----------------------------	--------------------

**Additional Well Information**

<sup>11</sup> Work Type E	<sup>12</sup> Well Type S	<sup>13</sup> Cable/Rotary R	<sup>14</sup> Lease Type P	<sup>15</sup> Ground Level Elevation 3412
<sup>16</sup> Multiple N	<sup>17</sup> Proposed Depth 10500	<sup>18</sup> Formation Devonian	<sup>19</sup> Contractor Unknown	<sup>20</sup> Spud Date ASAP
Depth to Ground water 111 feet		Distance from nearest fresh water well 1853 feet		Distance to nearest surface water 1200 feet

We will be using a closed-loop system in lieu of lined pits

<sup>21</sup> Proposed Casing and Cement Program

Type	Hole Size	Casing Size	Casing Weight/ft	Setting Depth	Sacks of Cement	Estimated TOC
Surface	15 1/2	14		158	50	Surface-In Place
Int	12 1/4	8 5/8	24	1210	900	Surface-In Place
Inj/Prod	7 7/8	5 1/2	17	9800 /	1200	Surface

**Casing/Cement Program: Additional Comments**

Original C102 not correct Open Hole completion in Devonian 9800-10500 C108 in preparation stage

<sup>22</sup> Proposed Blowout Prevention Program

Type	Working Pressure	Test Pressure	Manufacturer
Hydraulic Double/ Blinds /Pipe Rams	5000	5000	Cameron/Schaffer

<sup>23</sup> I hereby certify that the information given above is true and complete to the best of my knowledge and belief.  
I further certify that I have complied with 19.15.14.9 (A) NMAC  and/or 19.15.14.9 (B) NMAC , if applicable.

Signature: *Billy E. Prichard*

Printed name: Billy E. Prichard

Title: Agent for Great Western Drilling Company

E-mail Address: billy@pwillc.net

Date: 11/18/14 Phone: 432-934-7680

OIL CONSERVATION DIVISION

Approved By: *T. C. Shepard*

Title: *Biologist*

Approved Date: 11-26-2014 Expiration Date: 11-26-2016

Conditions of Approval Attached

DISTRICT I  
1625 N. French Dr., Hobbs, NM 88240  
Phone: (575) 393-6161 Fax: (575) 393-0720

DISTRICT II  
811 S. First St., Artesia, NM 88210  
Phone: (505) 748-1283 Fax: (505) 748-9720

DISTRICT III  
1000 Rio Brazos Road, Aztec, NM 87410  
Phone: (505) 334-6178 Fax: (505) 334-6170

DISTRICT IV  
1220 S. St. Francis Dr., Santa Fe, NM 87505  
Phone: (505) 476-3460 Fax: (505) 476-3462

State of New Mexico  
Energy, Minerals & Natural Resources Department  
OIL CONSERVATION DIVISION  
1220 South St. Francis Dr.  
Santa Fe, New Mexico 87505

Form C-102  
Revised August 1, 2011  
Submit one copy to appropriate  
District Office

AMENDED REPORT

WELL LOCATION AND ACREAGE DEDICATION PLAT

API Number <b>30-015-20169</b>	Pool Code <b>96101</b>	Pool Name <b>SWD; Devonian</b>
Property Code <b>313916</b>	Property Name <b>Thorpe Sears SWD</b>	Well Number <b>1</b>
OGRID No. <b>9338</b>	Operator Name <b>GREAT WESTERN DRILLING COMPANY</b>	Elevation <b>3411'</b>

Surface Location

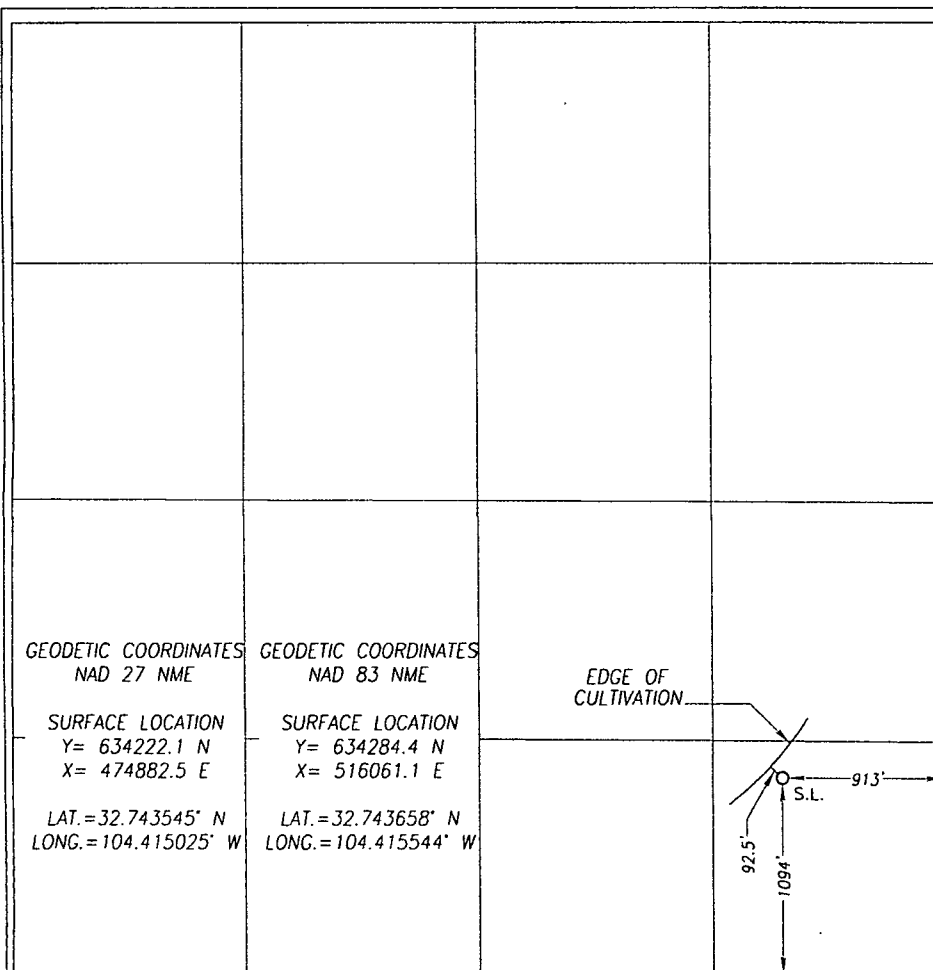
UL or lot No.	Section	Township	Range	Lot Idn	Feet from the	North/South line	Feet from the	East/West line	County
P	18	18-S	26-E		1094	SOUTH	913	EAST	EDDY

Bottom Hole Location If Different From Surface

UL or lot No.	Section	Township	Range	Lot Idn	Feet from the	North/South line	Feet from the	East/West line	County

Dedicated Acres <b>40</b>	Joint or Infill	Consolidation Code	Order No.
------------------------------	-----------------	--------------------	-----------

NO ALLOWABLE WILL BE ASSIGNED TO THIS COMPLETION UNTIL ALL INTERESTS HAVE BEEN CONSOLIDATED OR A NON-STANDARD UNIT HAS BEEN APPROVED BY THE DIVISION



**OPERATOR CERTIFICATION**

I hereby certify that the information herein is true and complete to the best of my knowledge and belief, and that this organization either owns a working interest or unleased mineral interest in the land including the proposed bottom hole location or has a right to drill this well at this location pursuant to a contract with an owner of such mineral or working interest, or to a voluntary pooling agreement or a compulsory pooling order heretofore entered by the division.

*Billy E. Prichard* 11/18/14  
Signature Date

**Billy E. Prichard - Agent**  
Printed Name

**billy@pwllc.net**  
E-mail Address

**SURVEYOR CERTIFICATION**

I hereby certify that the well location shown on this plat was plotted from field notes of actual surveys made by me or under my supervision, and that the same is true and correct to the best of my belief.

OCTOBER 29, 2014  
Date of Survey

Signature & Seal of Professional Surveyor:  
*Ronald J. Eidson* 11/14/2014

**NEW MEXICO**  
REGISTERED SURVEYOR  
3239

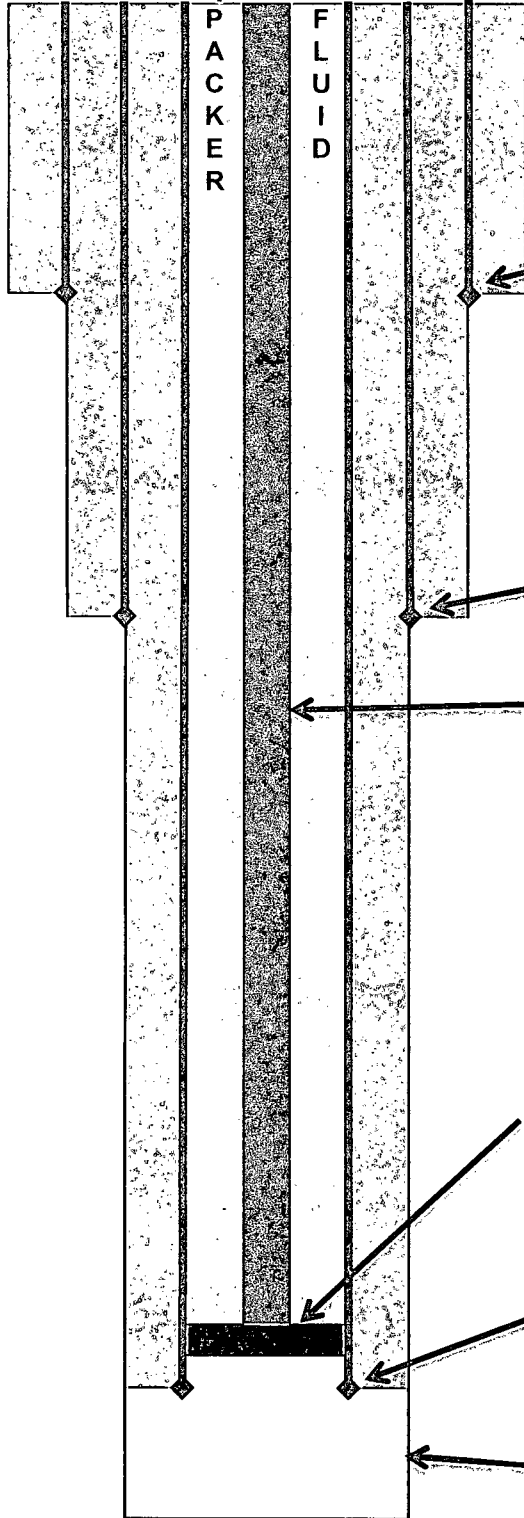
Certificate Number: 3239  
Ronald J. Eidson 12641

LSL JWSC W.O.: 14.11.1007

**Great Western Drilling Company**  
 Unit Letter "P", Section 18, T18S, R26E  
 Eddy County, New Mexico  
 990 FSL X 990 FEL

**Thorpe-Sears SWD #1**

**Proposed SWD**



14" Lap Weld CSA 158' in 15 1/2" Hole  
 Cemented w/ 50 sks  
 Top off w/ RediMix  
 Cement circulated to Surface

8 5/8" 24# J55 CSA 1210' in 12 1/4" Hole  
 Cemented w/ 900 sks Class "C"  
 Cement circulated to Surface

2 7/8" IPC tubing  
*Estimated Formation Tops*

San Andres	900
Glorieta	2900
Tubb	3712
Abo	4305
Wolfcamp	5595
Virgilian	7020
Canyon	7435
Strawn	8045
Atoka	8460
Morrow	8645
Morrow C	8925

5 1/2" NC packer @ 9750+/-

5 1/2" 17# L80 CSA 9800' in 7 7/8" Hole  
 Cement lead 900sks CLASS H 35/65 + 6%  
 BENTONITE + 0.4% R-20 + 0.25# CELLO-  
 FLAKE followed by 300 sks  
 CLASS H + 0.2% R-20 + 0.25# CELLO-FLAKE  
 Circulate cement to the surface

BEP

Devonian Open Hole  
[www.pwllc.net](http://www.pwllc.net)

TD 10500

N MEXICO OIL CONSERVATION COMMISSION  
WELL LOCATION AND ACREAGE DEDICATION PLAT

Form C-102  
Supersedes C-128  
Effective 1-1-65

All distances must be from the outer boundaries of the Section.

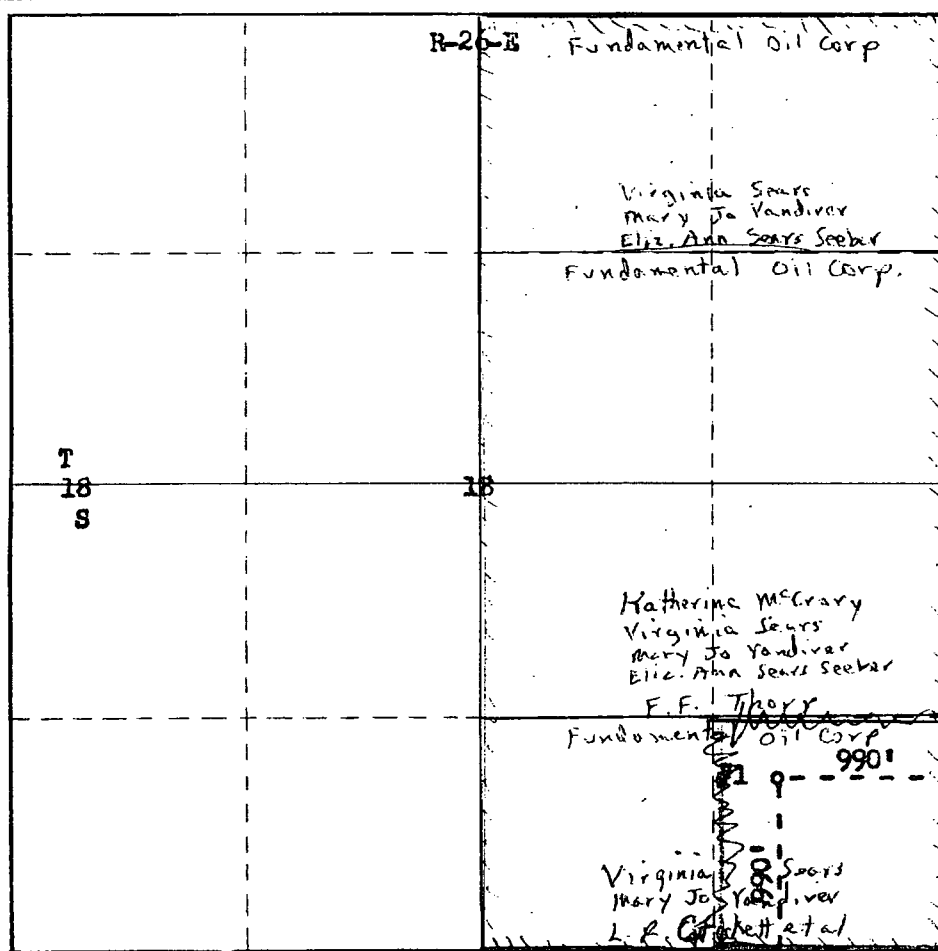
Operator <b>The Fundamental Oil Corp.</b>		Lease <b>Macathon Thoyx - Sears</b>		Well No. <b>1</b>
Unit Letter <b>P</b>	Section <b>18</b>	Township <b>T-18-S</b>	Range <b>R-26-E</b>	County <b>Eddy</b>
Actual Footage Location of Well: <b>990</b> feet from the <b>South</b> line and <b>990</b> feet from the <b>East</b> line				
Ground Level Elev. <b>3412</b>	Producing Formation <b>Marian</b>	Pool <b>Ato Ka. Penn and</b>	Dedicated Acreage: <del>40</del> <b>320</b> Acres	

1. Outline the acreage dedicated to the subject well by colored pencil or hachure marks on the plat below.
2. If more than one lease is dedicated to the well, outline each and identify the ownership thereof (both as to working interest and royalty).
3. If more than one lease of different ownership is dedicated to the well, have the interests of all owners be consolidated by communitization, unitization, ~~forced-pooling~~ etc?

Yes  No If answer is "yes," type of consolidation By Lease Agreement **AUG 26 1968**

If answer is "no," list the owners and tract descriptions which have actually been consolidated (by communitization, unitization, forced-pooling, or otherwise) or until a non-standard unit, eliminating such interests, has been approved by the Commission.

No allowable will be assigned to the well until all interests have been consolidated (by communitization, unitization, forced-pooling, or otherwise) or until a non-standard unit, eliminating such interests, has been approved by the Commission.



CERTIFICATION

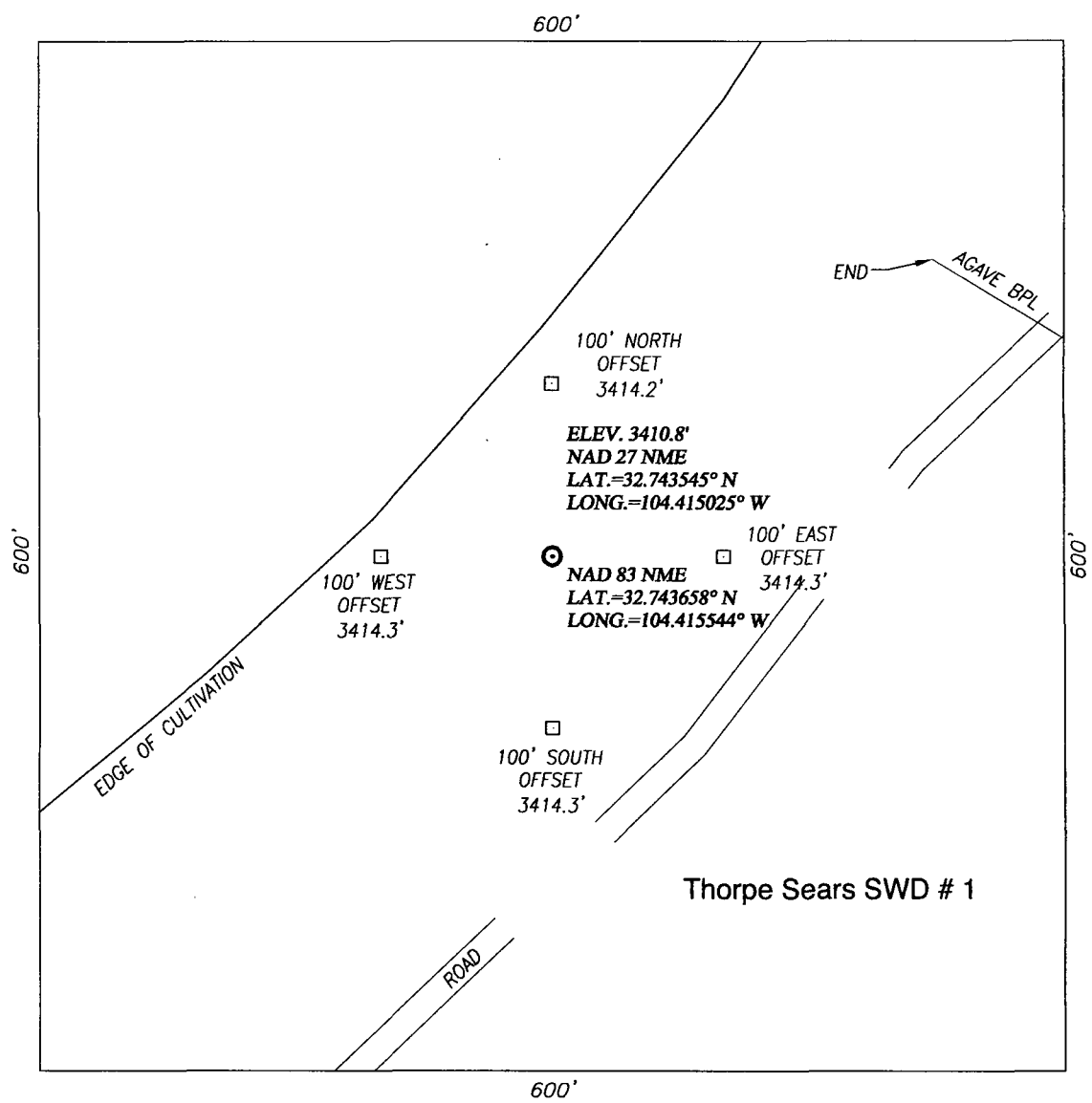
I hereby certify that the information contained herein is true and complete to the best of my knowledge and belief.

Name Paul G. White  
Position Engineer (Consulting)  
Company Fundamental Oil Corp  
Date 8-23-68

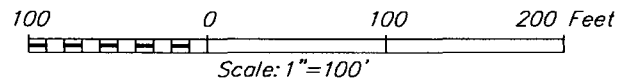
I hereby certify that the well location shown on this plat was plotted from field notes of actual surveys made by me or under my supervision, and that the same is true and correct to the best of my knowledge and belief.

Date Surveyed August 15, 1968  
Registered Professional Engineer and/or Land Surveyor

James H. Brown  
Certificate No. 542



NOTE:  
1) SEE "LOCATION VERIFICATION MAP"  
FOR PROPOSED ROAD LOCATION.



**DIRECTIONS**

FROM THE INTERSECTION OF U.S. HWY 285 AND CO. RD. 39  
(FOUR DINKUS) GO WEST APPROX. 1 MILE TURN LEFT AND GO  
SOUTH APPROX. 0.9 MILES TO LOCATION.

**GREAT WESTERN DRILLING COMPANY**

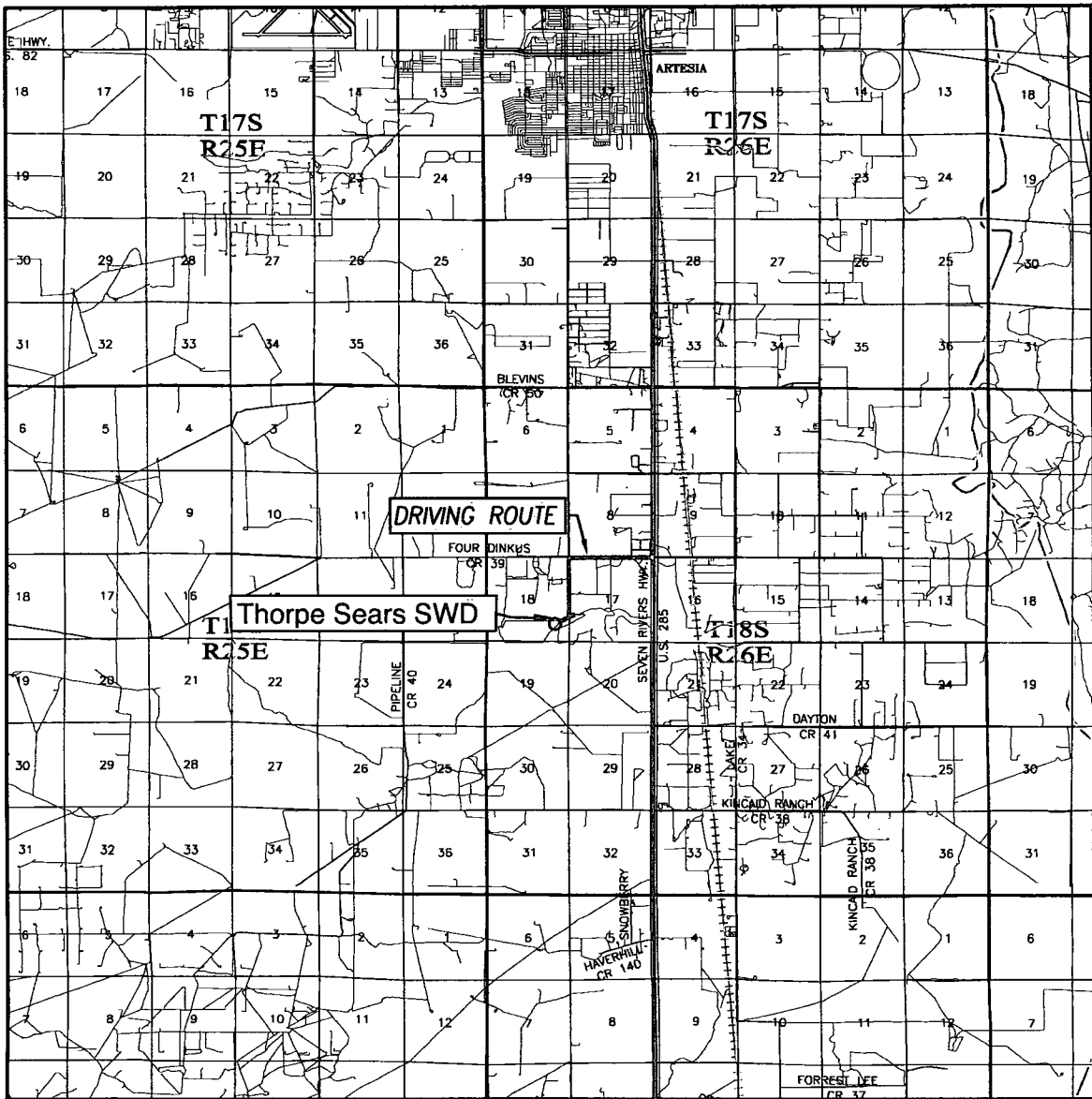
LOCATED 1094 FEET FROM THE SOUTH LINE  
AND 913 FEET FROM THE EAST LINE OF SECTION 18,  
TOWNSHIP 18 SOUTH, RANGE 26 EAST, N.M.P.M.,  
EDDY COUNTY, NEW MEXICO



PROVIDING SURVEYING SERVICES  
SINCE 1946  
**JOHN WEST SURVEYING COMPANY**  
412 N. DAL PASO HOBBS, N.M. 88240  
(575) 393-3117 www.jwsc.biz  
TBPLS# 10021000

Survey Date: 10/29/14	CAD Date: 11/12/14	Drawn By: LSL
W.O. No.: 14111007	Rev: .	Rel. W.O.:
		Sheet 1 of 1

# VICINITY MAP



SCALE: 1" = 2 MILES

DRIVING ROUTE: SEE LOCATION VERIFICATION MAP

SEC. 18 TWP. 18-S RGE. 26-E

SURVEY \_\_\_\_\_ N.M.P.M. \_\_\_\_\_


COUNTY EDDY STATE NEW MEXICO

DESCRIPTION 1094' FSL & 913' FEL

ELEVATION 3411'

OPERATOR GREAT WESTERN DRILLING COMPANY

LEASE Thorpe Sears SWD



PROVIDING SURVEYING SERVICES  
 SINCE 1946  
**JOHN WEST SURVEYING COMPANY**  
 412 N. DAL PASO HOBBS, N.M. 88240  
 (575) 393-3117 www.jwsc.biz  
 TBPLS# 10021000

**Great Western Drilling Company  
Ogrid # 9338  
Thorpe Sears SWD # 1  
API # 30-015-20169  
1034 FSL X 913 FEL  
Unit Letter "P", Section 18, T18S, R26E  
Eddy County, New Mexico**

**NM OIL CONSERVATION  
ARTESIA DISTRICT**

**NOV 20 2014**

**RECEIVED**

**Great Western Drilling proposes to drill out cement plugs to original TD of 8970 feet and to drill to a new TD 10500 feet.**

**5 ½" casing will be run and cemented at 9800 feet.**

**Original C102 dated August 15, 1968 was found to be in error. Well was surveyed in 2014 and new C102 is enclosed.**

**Well will be re-entered and new hole will be drilled using cut brine.**