

UNITED STATES  
DEPARTMENT OF THE INTERIOR  
BUREAU OF LAND MANAGEMENT

SHL

## APPLICATION FOR PERMIT TO DRILL OR REENTER

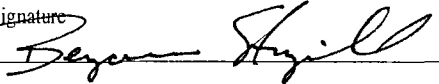
5. Lease Serial No. NMMN0540701	BHL-FEE	
6. If Indian, Allottee or Tribe Name		
7. If Unit or CA Agreement, Name and No.		
8. Lease Name and Well No. <313966> Jester 19 W2AP Fed Com #1H		
9. API Well No. 30-015-42830		
10. Field and Pool, or Exploratory Forehand Ranch Southwest (76780)		
11. Sec., T. R. M. or Blk. and Survey or Area Sec. 19, T23S, R27E		
12. County or Parish Eddy	13. State NM	
15. Distance from proposed* location to nearest property or lease line, ft. (Also to nearest drig. unit line, if any)	16. No. of acres in lease 160	17. Spacing Unit dedicated to this well 320
18. Distance from proposed location* to nearest well, drilling, completed, applied for, on this lease, ft.	19. Proposed Depth 14,089.1'-MD 9,530.0'-TVD	20. BLM/BIA Bond No. on file NM-1693 nationwide, NMB-000919
21. Elevations (Show whether DF, KDB, RT, GL, etc.) 3192'	22. Approximate date work will start* 07/01/2014	23. Estimated duration 60 Days

1a. Type of work: <input checked="" type="checkbox"/> DRILL <input type="checkbox"/> REENTER	ATS-14-852
1b. Type of Well: <input type="checkbox"/> Oil Well <input checked="" type="checkbox"/> Gas Well <input type="checkbox"/> Other <input checked="" type="checkbox"/> Single Zone <input type="checkbox"/> Multiple Zone	
2. Name of Operator Mewbourne Oil Company	
3a. Address PO Box 5270 Hobbs, NM 88241	3b. Phone No. (include area code) 575-393-5905
4. Location of Well (Report location clearly and in accordance with any State requirements.) At surface 185' FNL & 710' FEL Sec. 19, T23S, R27E At proposed prod. zone 330' FSL & 660' FEL Sec. 19, T23S, R27E	
14. Distance in miles and direction from nearest town or post office* 9.1 miles from Carlsbad, NM	
JNORTHODOX LOCATION	

## 24. Attachments

The following, completed in accordance with the requirements of Onshore Oil and Gas Order No.1, must be attached to this form:

- |  |   |
|--|---|
| 1. Well plat certified by a registered surveyor.   | 4. Bond to cover the operations unless covered by an existing bond on file (see Item 20 above). |
| 2. A Drilling Plan.  | 5. Operator certification   |
| 3. A Surface Use Plan (if the location is on National Forest System Lands, the SUPO must be filed with the appropriate Forest Service Office). | 6. Such other site specific information and/or plans as may be required by the BLM.             |

25. Signature 	Name (Printed/Typed) Benjamin Sturgill	Date 6-19-2014
--	---	-------------------

Approved by (Signature) Steve Caffey	Name (Printed/Typed)	Date NOV 25 2014
Title FIELD MANAGER	Office CARLSBAD FIELD OFFICE	

Application approval does not warrant or certify that the applicant holds legal or equitable title to those rights in the subject lease which would entitle the applicant to conduct operations thereon.

Conditions of approval, if any, are attached.

APPROVAL FOR TWO YEARS

Title 18 U.S.C. Section 1001 and Title 43 U.S.C. Section 1212, make it a crime for any person knowingly and willfully to make to any department or agency of the United States any false, fictitious or fraudulent statements or representations as to any matter within its jurisdiction.

(Continued on page 2)

\*(Instructions on page 2)

Carlsbad Controlled Water Basin

NM OIL CONSERVATION  
ARTESIA DISTRICT

DEC 08 2014

RECEIVED

Approval Subject to General Requirements  
& Special Stipulations AttachedSEE ATTACHED FOR  
CONDITIONS OF APPROVAL

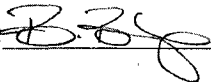
## Mewbourne Oil Company

PO Box 5270  
Hobbs, NM 88241  
(575) 393-5905

I hereby certify that I, or someone under my direct supervision, have inspected the drill site and access route proposed herein; that I am familiar with the conditions which currently exist; that I have full knowledge of State and Federal laws applicable to this operation; that the statements made in this APD package are, to the best of my knowledge, true and correct; and that the work associated with the operations proposed herein will be performed in conformity with this APD package and the terms and conditions under which it is approved. I also certify that I, or the company I represent, am responsible for the operations conducted under this application. These statements are subject to the provisions of 18 U.S.C. 1001 for the filing of false statements.

Executed this 5 day of June, 2014.

Name: Robin Terrell

Signature:  FOR Robin Terrell

Position Title: Hobbs District Manager

Address: PO Box 5270, Hobbs NM 88241

Telephone: 575-393-5905

E-mail: rterrell@mewbourne.com

District I  
1625 N. French Dr., Hobbs, NM 88240  
Phone: (575) 393-6161 Fax: (575) 393-0720

District II  
811 S. First St., Artesia, NM 88210  
Phone: (575) 748-1283 Fax: (575) 748-9720

District III  
1000 Rio Brazos Road, Aztec, NM 87410  
Phone: (505) 334-6178 Fax: (505) 334-6170

District IV  
1220 S. St. Francis Dr., Santa Fe, NM 87505  
Phone: (505) 476-3460 Fax: (505) 476-3462

State of New Mexico  
Energy, Minerals & Natural Resources Department  
OIL CONSERVATION DIVISION  
1220 South St. Francis Dr.  
Santa Fe, NM 87505

Form C-102  
Revised August 1, 2011  
Submit one copy to appropriate  
District Office

☐ AMENDED REPORT

WELL LOCATION AND ACREAGE DEDICATION PLAT

<sup>1</sup> API Number 30-015-42830	<sup>2</sup> Pool Code 76780	<sup>3</sup> Pool Name Wolfcamp (GA2) Forehand Ranch, Southwest
<sup>4</sup> Property Code 313966	<sup>5</sup> Property Name JESTER 19 W2AP FED COM	<sup>6</sup> Well Number 1H
<sup>7</sup> OGRID No. 14744	<sup>8</sup> Operator Name MEWBOURNE OIL COMPANY	<sup>9</sup> Elevation 3192'

<sup>10</sup> Surface Location

UL or lot no.	Section	Township	Range	Lot Idn	Feet from the	North/South line	Feet from the	East/West line	County
A	19	23-S	27-E		185	NORTH	710	EAST	EDDY

<sup>11</sup> Bottom Hole Location If Different From Surface

UL or lot no.	Section	Township	Range	Lot Idn	Feet from the	North/South line	Feet from the	East/West line	County
P	19	23-S	27-E		330	SOUTH	660	EAST	EDDY

<sup>12</sup> Dedicated Acres	<sup>13</sup> Joint or Infill	<sup>14</sup> Consolidation Code	<sup>15</sup> Order No.
320			

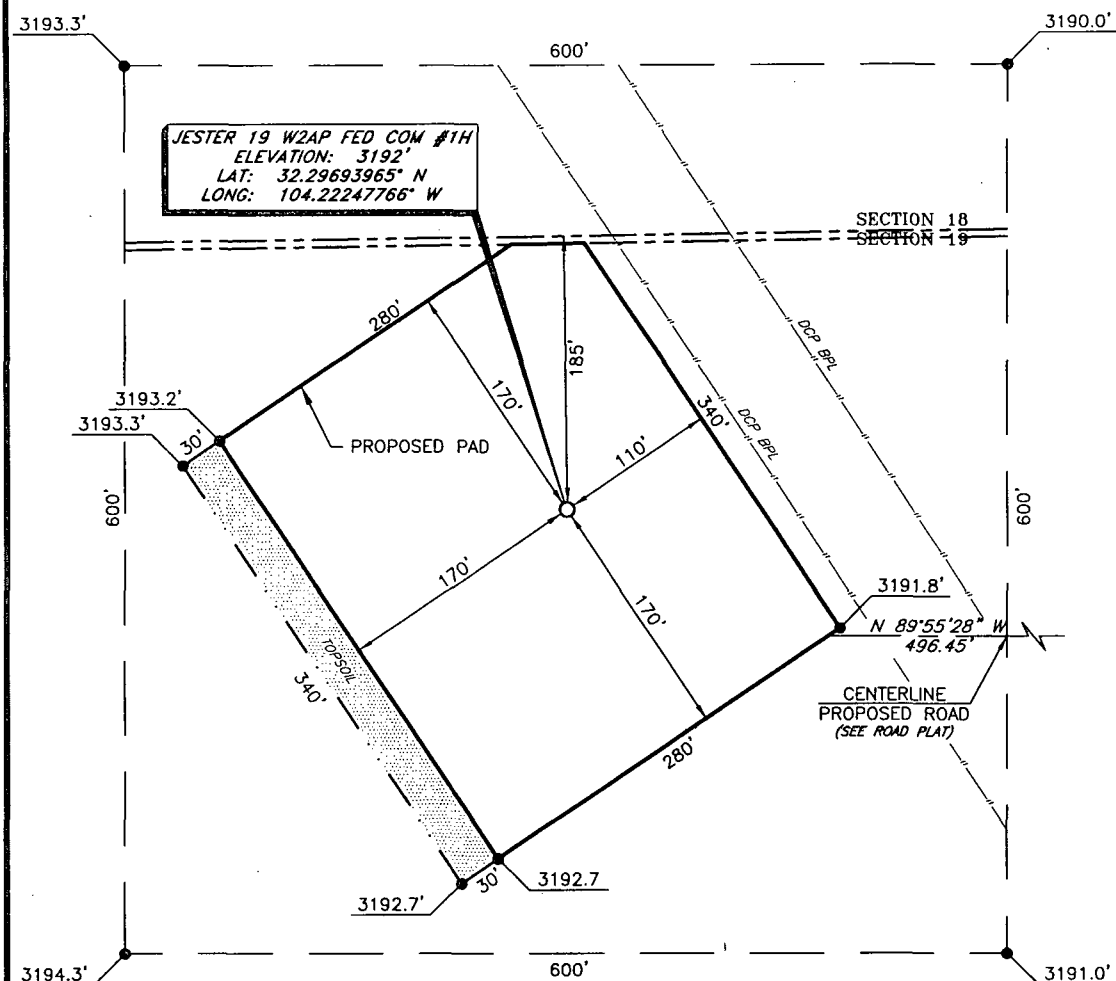
No allowable will be assigned to this completion until all interests have been consolidated or a non-standard unit has been approved by the division.

<p><b>GEODETIC DATA</b> NAD 27 GRID - NM EAST SURFACE LOCATION N 471761.3 E 534253.5 LAT: 32.29693965° N LONG: 104.22247765° W</p> <p><b>CORNER DATA</b> NAD 27 GRID - NM EAST A: FND BRASS CAP 1943 N 466582.4 - E 529660.5 B: FND BRASS CAP 1943 N 469232.9 - E 529665.1 C: FND BRASS CAP 1943 N 471883.1 - E 529671.5 D: FND 1/2" RBR IN STONE MOUND N 471919.9 - E 532336.8 E: FND PK NAIL IN CL ROAD N 471956.1 - E 534962.0 F: CALCULATED CORNER 469313.5 - E 534967.6 G: CALCULATED CORNER N 466627.0 - E 534999.6 H: CALCULATED CORNER N 466627.4 - E 532344.4</p> <p>Project area Producing stream Well Path</p> <p>DETAIL "A" S.L. 3193.3 600' 3190.0 3194.3 3191.0</p>	<p><b><sup>17</sup> OPERATOR CERTIFICATION</b> I hereby certify that the information contained herein is true and complete to the best of my knowledge and belief, and that this organization either owns a working interest or unleased mineral interest in the land including the proposed bottom hole location or has a right to drill this well at this location pursuant to a contract with an owner of such a mineral or working interest, or to a voluntary pooling agreement or a compulsory pooling order heretofore entered by the division.</p> <p>Signature: <i>Bradley Bishop</i> Date: 6-5-14 Printed Name: BRADLEY BISHOP E-mail Address:</p> <p><b><sup>18</sup> SURVEYOR CERTIFICATION</b> I hereby certify that the well location shown on this plat was plotted from field notes of actual surveys made by me or under my supervision, and that the same is true and correct to the best of my belief.</p> <p>5/27/14 Date of Survey Signature and Seal of Professional Surveyor:  19680 Certificate Number</p>
---	--

Exhibit "3"

# MEWBOURNE OIL COMPANY

Jester 19 W2AP Fed Com #1H  
(185' FNL & 710' FEL)  
Section 19, T-23-S, R-27-E,  
N. M. P. M., Eddy Co., New Mexico



## DIRECTIONS TO LOCATION

From the intersection of CR-763 (Bounds Rd.) and CR-748  
Old Cavern Hwy.;

Go North on CR-748 approx. 3.0 miles;

The location is 710 feet West of the CR-748.

SCALE: 1" = 100'  
0 50 100

BEARINGS ARE  
NAD 27 GRID - NM EAST  
DISTANCES ARE GROUND.

Firm No.: TX 10193838 NM 4655451

Copyright 2014 - All Rights Reserved

NO.	REVISION	DATE
JOB NO.:	140221PAD	
DWG. NO.:	LS140221	

# RRC

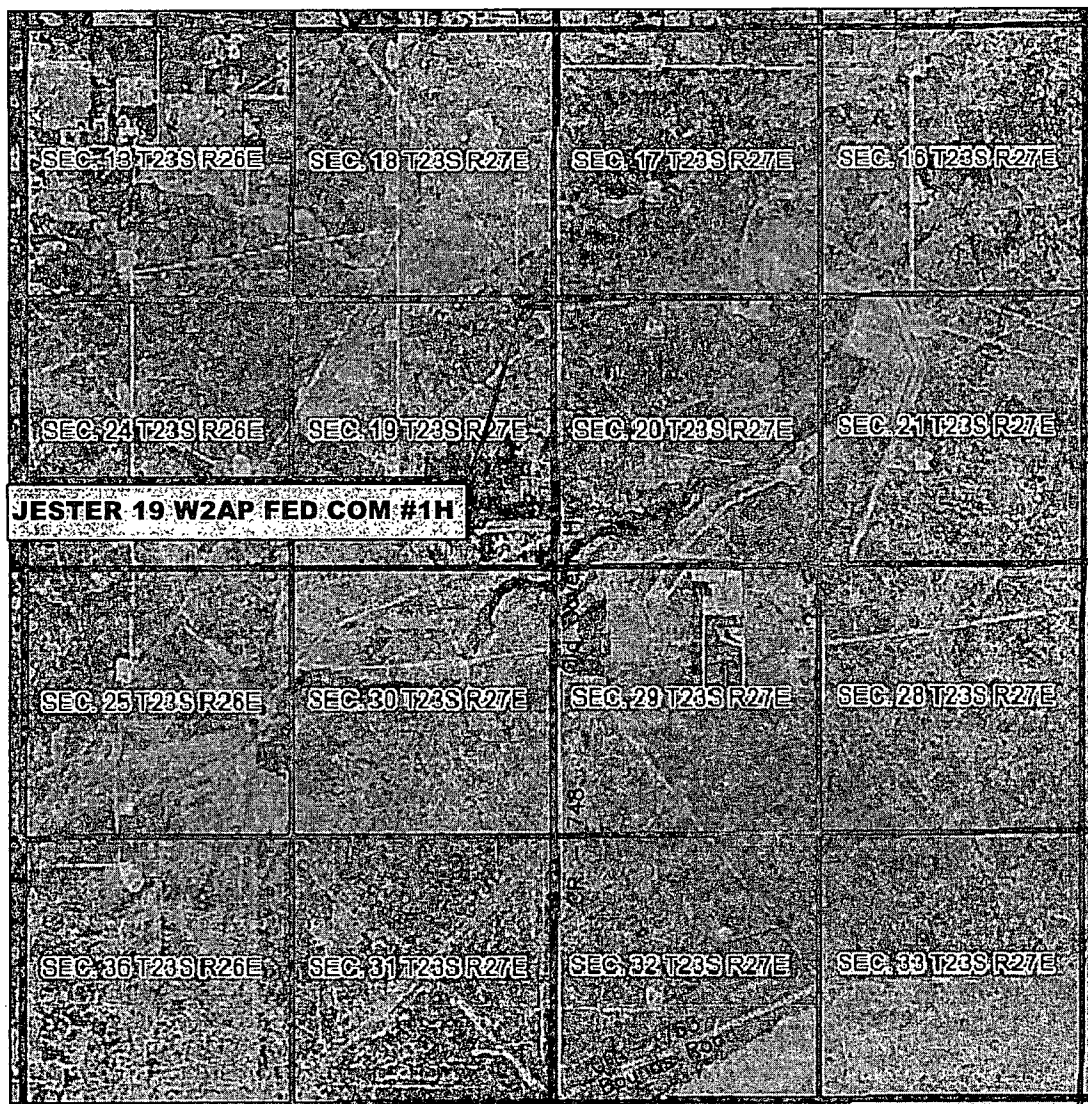
308 W. BROADWAY ST., HOBBS, NM 88240 (575) 964-8200

SCALE: 1"=100'
DATE: 5/27/14
SURVEYED BY: GB/SM
DRAWN BY: AF
APPROVED BY: RMH
SHEET : 1 OF 1

Exhibit "3A"

# VICINITY MAP

NOT TO SCALE



*SECTION 19, TWP. 23 SOUTH, RGE. 27 EAST,  
N. M. P. M., EDDY COUNTY, NEW MEXICO*

OPERATOR: Mewbourne Oil Company  
LEASE: Jester 19 W2AP Fed Com  
WELL NO.: 1H

LOCATION: 185' FNL & 710' FEL  
ELEVATION: 3192'

Firm No.: TX 10193838 NM 4655451

Copyright 2014 - All Rights Reserved

NO.	REVISION	DATE
JOB NO.: LS140221		
DWG. NO.: 140221VM		

# RRC

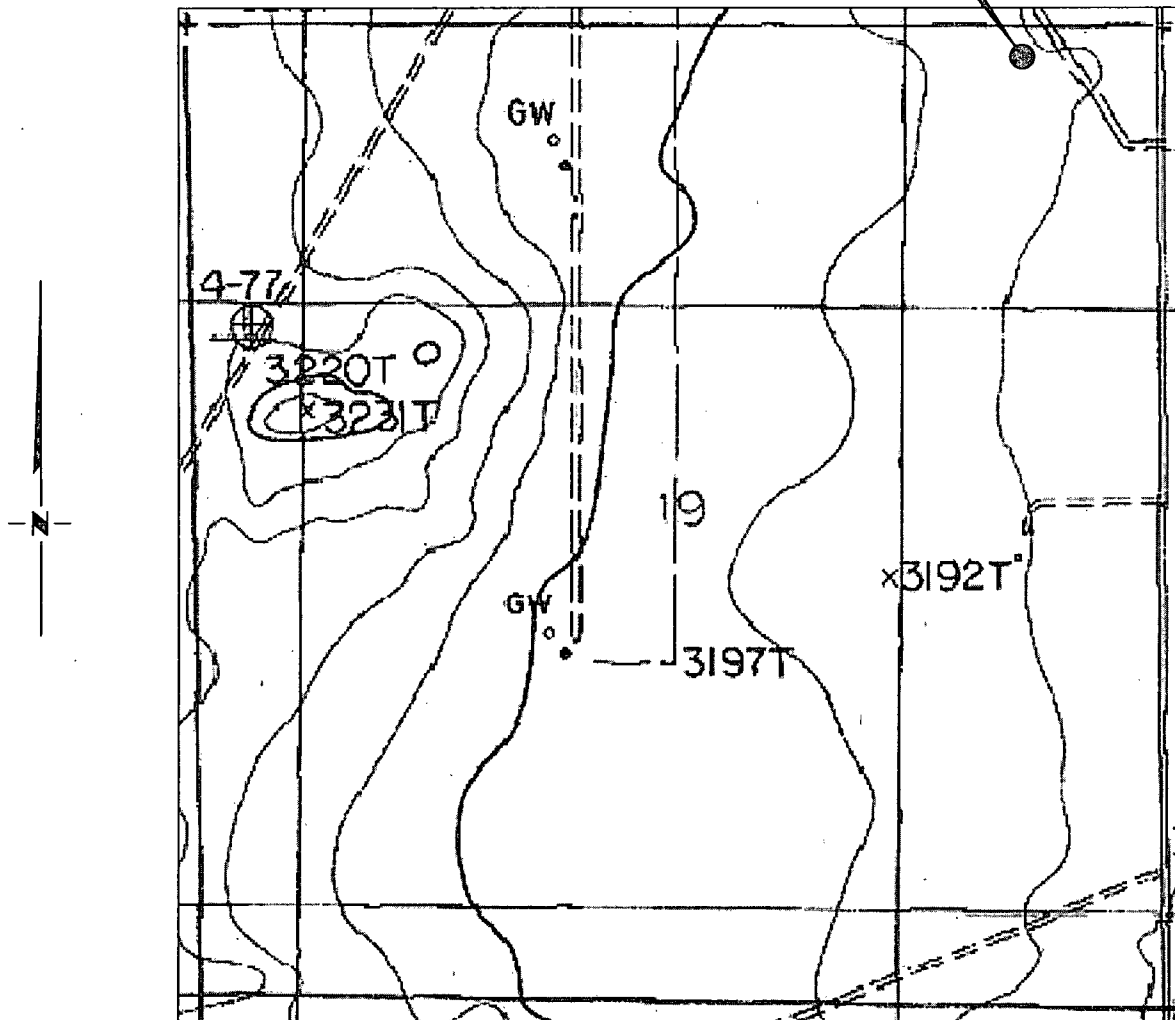
308 W. BROADWAY ST., HOBBS, NM 88240 (575) 964-8200

SCALE: N.T.S.
DATE: 5/27/14
SURVEYED BY: GB/SM
DRAWN BY: AF
APPROVED BY: RMH
SHEET : 1 OF 1

Exhibit "3b"

# LOCATION VERIFICATION MAP

JESTER 19 W2AP FED COM #1H



SECTION 19, TWP. 23 SOUTH, RGE. 27 EAST,  
N. M. P. M., EDDY COUNTY, NEW MEXICO

OPERATOR: Mewbourne Oil Company  
LEASE: Jester 19 W2AP Fed Com  
WELL NO.: 1H  
ELEVATION: 3192'

LOCATION: 185' FNL & 710' FEL  
CONTOUR INTERVAL: 10'  
USGS TOPO. SOURCE MAP:  
Otis, NM (Prov. Ed. 1985)

Firm No.: TX 10193838 NM 4655451

Copyright 2014 - All Rights Reserved

NO.	REVISION	DATE
JOB NO.: LS140221		
DWG. NO.: 140221LVM		

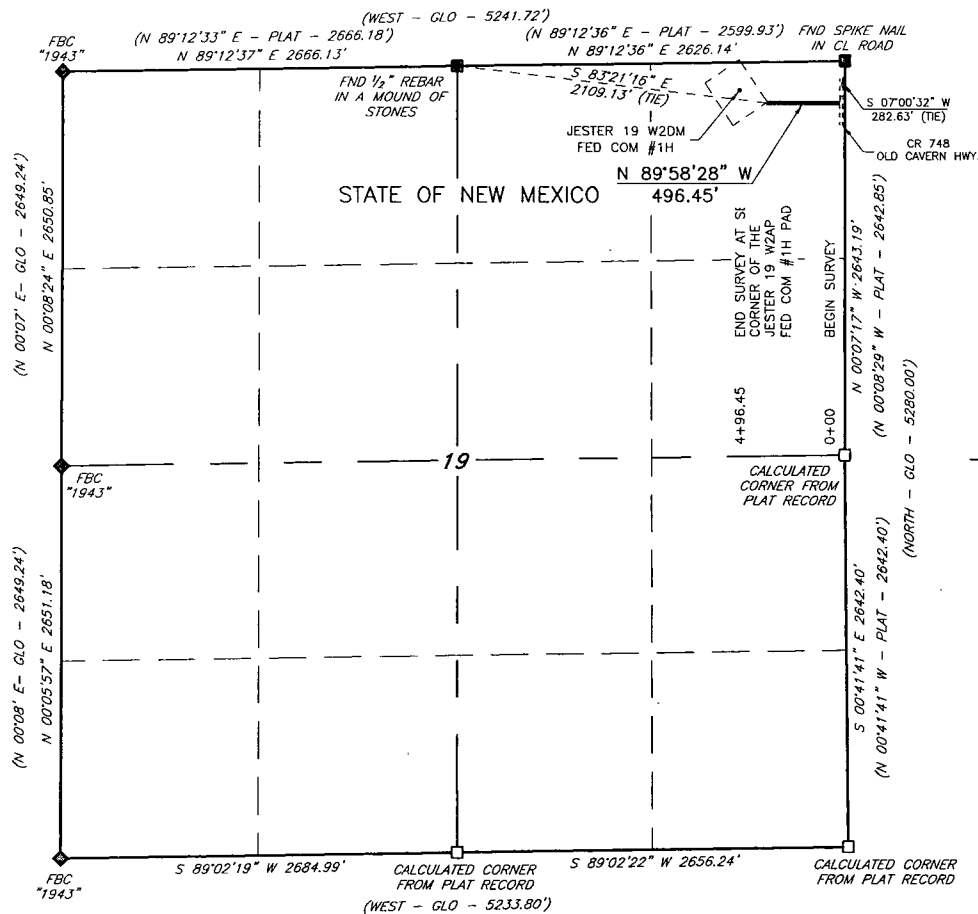
# RRC

308 W. BROADWAY ST., HOBBS, NM 88240 (575) 964-8200

SCALE: 1"=1000'
DATE: 5/27/14
SURVEYED BY: GB/SM
DRAWN BY: AF
APPROVED BY: RMH
SHEET : 1 OF 1

Exhibit "30"

**MEWBOURNE OIL COMPANY**  
**PROPOSED ACCESS ROAD FOR THE JESTER 19 W2AP FED COM #1H**  
**SEC. 19, T23S, R27E, N.M.P.M., EDDY CO., N.M.**



**DESCRIPTION**

A strip of land being 20 feet wide, 496.45 feet or 30.088 rods in length lying in Section 19, Township 23 South, Range 27 East, N. M. P. M., Eddy County, New Mexico, being 10 feet left and 10 feet right of the following described survey of a centerline across the lands of the State of New Mexico;

Beginning at Engr. Sta. 0+00, a point on the West Right-of-Way of County Road 748, Old Cavern Highway, in the Northeast quarter of Section 19, which bears S 07°00'32" W, 282.63 feet from a found Spike Nail in the centerline of CR 748, found for the Northeast corner of Section 19, according to a plat filed for record in Cabinet A, Slide 783-1, on 23rd May, 1999, of the Deed Records of Eddy County, New Mexico;

Thence N 89°58'28" W, 496.45 feet to Sta. 4+96.45, the End of Survey, a point in the Northwest quarter of Section 19, which bears S 83°21'16" E, 2109.13 feet from a 1/2" rebar in a mound of stones, found for the Northeast quarter corner of Section 19.

Said strip of land contains 0.228 acres, more or less and is allocated by forties as follows:

NE ¼ NE ¼      0.228 Acres

SCALE: 1" = 1000'  
 0      500      1000

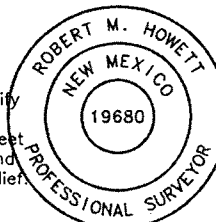
BEARINGS: NAD 27 GRID-NM EAST  
 DISTANCES: HORIZ.

**LEGEND**  
 ( ) RECORD DATA  
 FBC "\*\*\*\*\*" FOUND BRASS CAP "YEAR"  
 □ CALCULATED CORNER  
 ■ FOUND MON. AS NOTED  
 — PROPOSED ROAD

I, R. M. Howett, a N. M. Professional Surveyor, hereby certify that this plat was prepared from an actual ground survey made under my direct supervision, said survey and plat meet the Min. Stds. for Land Surveying in the State of N. M. and are true and correct to the best of my knowledge and belief.

*Robert M. Howett*

Robert M. Howett      NM PS 19680



Firm No.: TX 10193838 NM 4655451

Copyright 2014 - All Rights Reserved

NO.	REVISION	DATE
JOB NO.:	LS140221	
DWG. NO.:	140221RD	

**RRC**

308 W. BROADWAY ST., HOBBS, NM 88240 (575) 964-8200

SCALE: 1"=1000'
DATE: 5/27/14
SURVEYED BY: GB/SM
DRAWN BY: AF
APPROVED BY: RMH
SHEET : 1 OF 1



SESE SESE

SWSW SWSW

Exhibit "3E"

Proposed Road

Jester 19W2AP

Old Ocean Hwy

NENE NENE

NWNW NWNW

© 2014 Google

748

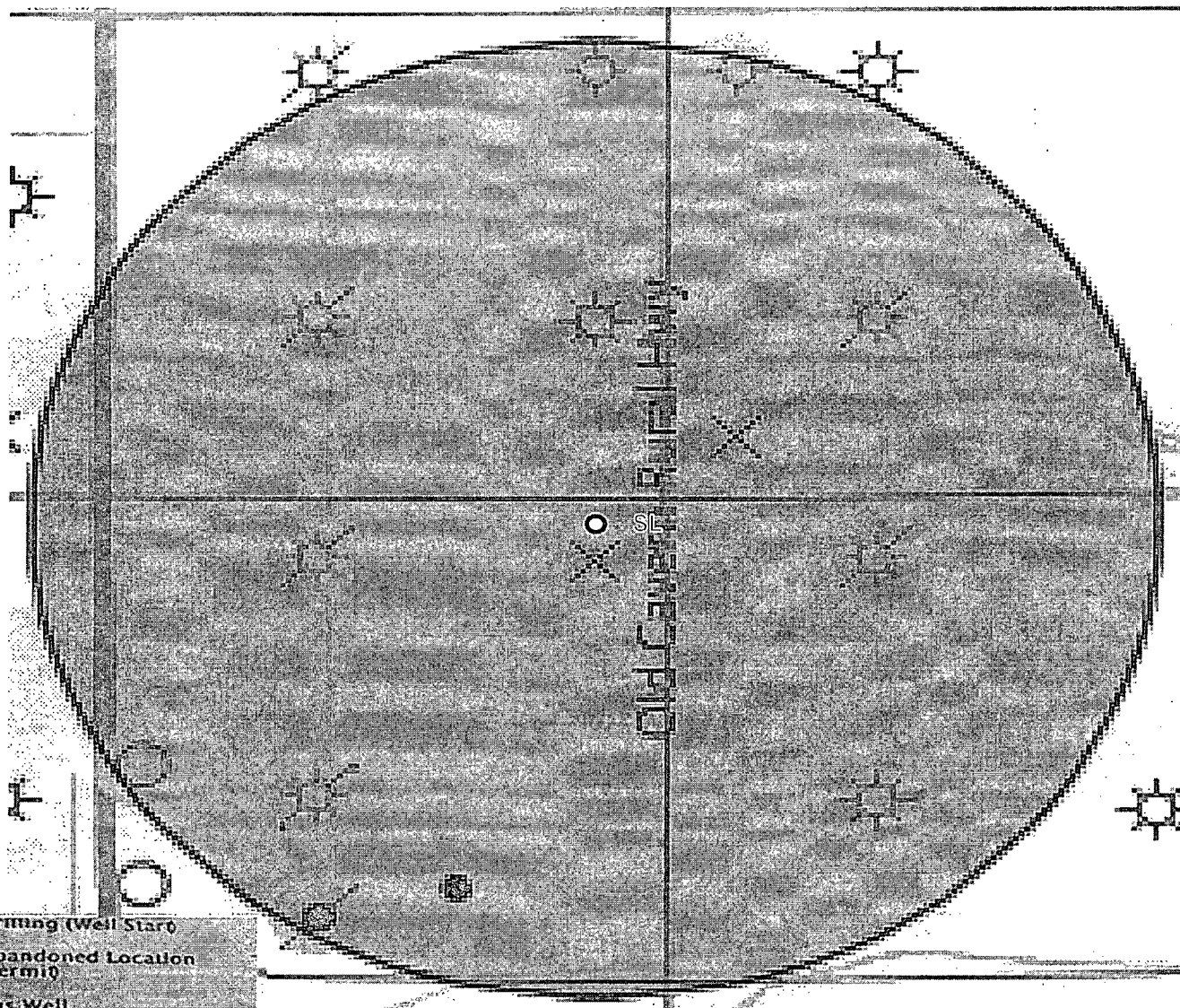
GOO  
Ea

1996

Imagery Date: 4/16/2013 32°17'46.98" N 104°13'16.48" W elev 3195 ft



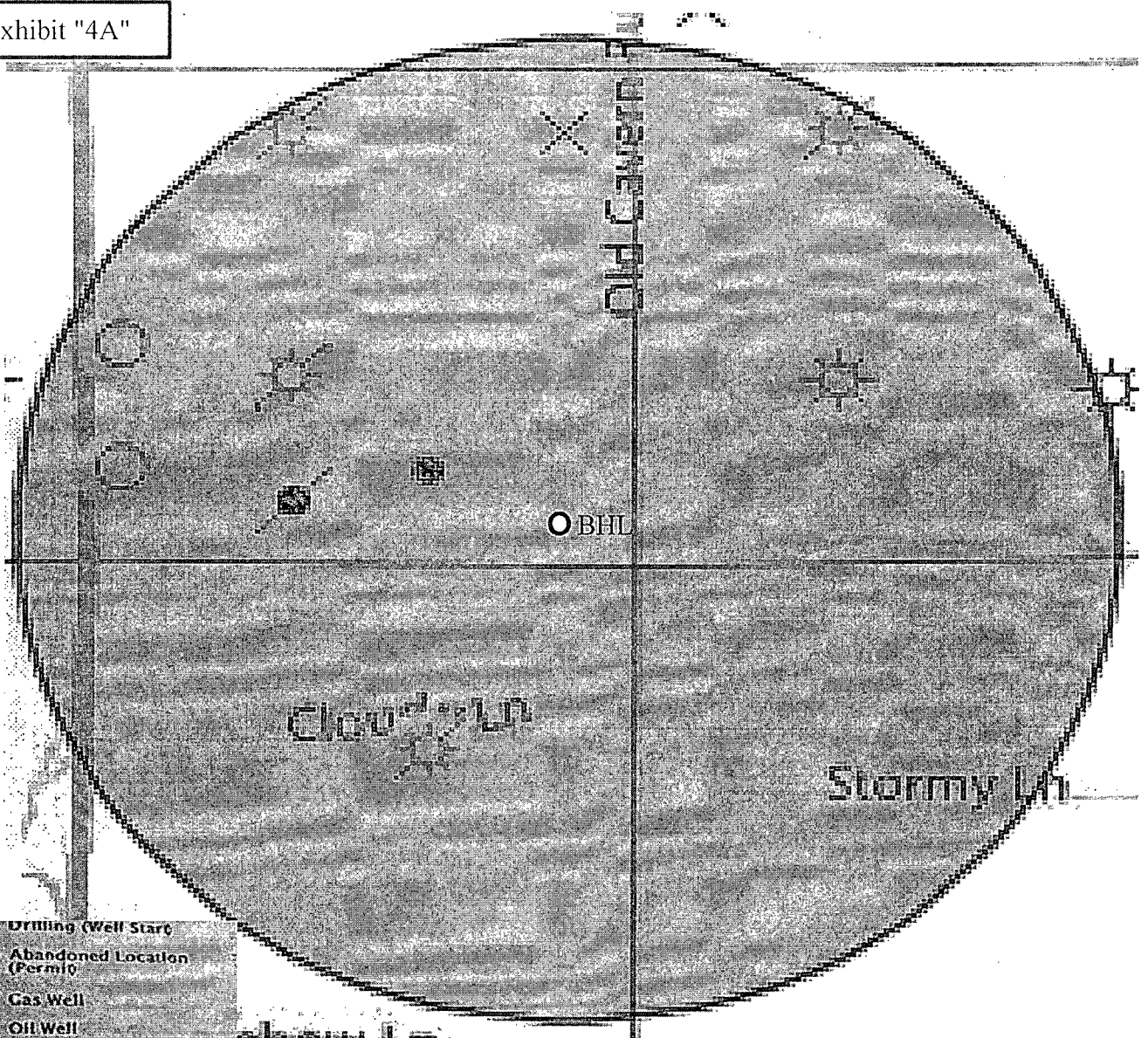
Exhibit "4"



Surface Location  
Jester 19 W2AP Fed Com #1H  
Sec 19 T23S R27E

- Drilling (Well Start)
- ✕ Abandoned Location (Permit)
- ✱ Gas Well
- Oil Well
- ✱ Oil and Gas Well
- Other (Observation, etc)
- ✱ Injection Well
- ◇ Suspended
- ✱ Plugged Gas Well
- ✱ Plugged Oil Well
- ✱ Plugged Oil and Gas
- ◇ Dry Hole (No Shows)
- ✱ Dry Hole w/Gas Show
- ◇ Dry Hole w/Oil Show
- ✱ Dry Hole w/Oil and Gas Show

Exhibit "4A"



- Drilling (Well Start)
- ✕ Abandoned Location (Permit)
- ✕ Gas Well
- Oil Well
- ✕ Oil and Gas Well
- Other (Observation, etc)
- ✕ Injection Well
- Suspended
- ✕ Plugged Gas Well
- ✕ Plugged Oil Well
- ✕ Plugged Oil and Gas
- ◇ Dry Hole (No Shows)
- ◇ Dry Hole w/Gas Show
- ◇ Dry Hole w/Oil Show
- ◇ Dry Hole w/Oil and Gas Show

Bottom Hole Location  
 Jester 19 W2AP Fed Com #1H  
 Sec 19 T23S R27E

**Drilling Program**  
**Mewbourne Oil Company**  
Jester 19 W2AP Fed Com #1H  
185' FNL & 710' FEL  
Sec. 19 T23S R27E  
Eddy County, New Mexico

**1. The estimated (TVD) tops of geological markers are as follows:**

Rustler	425'
Top of Salt	550'
Base of Salt	1940'
Delaware	2060'
Bell Canyon	NP
Cherry Canyon	NP
Manzanita Marker	NP
Brushy Canyon	NP
*Bone Springs	5320'
1 <sup>st</sup> Bone Spring Sand	6375'
2 <sup>nd</sup> Bone Spring Sand	6910'
3 <sup>rd</sup> Bone Spring Sand	8480'
Wolfcamp	8830'

**2. Estimated depths of anticipated fresh water, oil, or gas:**

Water	Fresh water is anticipated @ 175' and will be protected by setting surface casing at 450' and cementing to surface.
Hydrocarbons	Oil and gas are anticipated in the above (*) formations. These zones will be protected by casing as necessary.

**3. Pressure control equipment:**

A 2000# WP annular will be installed after running 13 3/8" casing. A 5000# WP double ram BOP and 5000# WP Annular will be installed after running 9 5/8" & 7" casing. Pressure tests will be conducted prior to drilling out under all casing strings. BOP controls will be installed prior to drilling under surface casing and will remain in use until completion of drilling operations. BOPs will be inspected and operated as recommended in Onshore Order #2. A Kelly cock and a sub equipped with a full opening valve sized to fit the drill pipe and collars will be available on the rig floor in the open position when the Kelly is not in use.

Will test the 13 3/8" annular to 1250# and the 9 5/8" & 7" BOPE to 5000# and annular to 2500# with a third party testing company before drilling below each shoe, but will test again, if needed, in 30 days from the 1<sup>st</sup> test as per BLM Onshore Oil and Gas Order #2.

**4. Drilling Program:**

MOC proposes to drill a vertical wellbore to 8957' & kick off to horizontal @ 9530' TVD. The well will be drilled to 14,089' MD (9530' TVD). See attached directional plan.

**5. Proposed casing and cementing program:**

**A. Casing Program:**

<u>Hole Size</u>	<u>Casing</u>	<u>Wt/Ft</u>	<u>Grade</u>	<u>Depth</u>	<u>Jt Type</u>
17 1/2"	13 3/8" (new)	48#	H40	0'-450'	ST&C
12 1/4"	9 5/8" (new)	36#	J55	0'-2000'	LT&C
8 3/4"	7" (new)	26#	P110	0-8957' MD	LT&C
8 3/4"	7" (new)	26#	P110	8597'-9857' MD	BT&C
6 1/8"	4 1/2" (new)	13.5#	P110	9657'-TD	LT&C

Minimum casing design factors: Collapse 1.125, Burst 1.0, Tensile strength 1.8.

\*Subject to availability of casing.

## B. Cementing Program:

- i. Surface Casing: 204 sacks \*Lite "C" (35:65:4) cement w/salt and lost circulation additives. Yield at 2.12 cuft/sk. Mix @ 11.17gal/sk FW. 200 sks class "C" w/2%  $\text{CaCl}_2$ . Yield at 1.34 cuft/sk. Mix @ 6.34gal/sk FW. Cmt circulated to surface w/100% excess.
- ii. Intermediate Casing: 280 sacks \*Lite "C" (35:65:4) cement w/salt and lost circulation material additives. Yield at 2.12 cuft/sk. Mix @ 11.17gal/sk FW. 200 sks class "C" neat. Yield at 1.33 cuft/sk. Mix @ 6.32gal/sk. Cmt circulated to surface w/25% excess.
- iii. Production Casing: 470 sacks \*Lite "C" (60:40:0) cement w/salt and fluid loss additives. Yield at 2.12 cuft/sk. Mix @ 11.31gal/sk FW. 300 sks class "H" w/salt and fluid loss additives. Yield at 1.18 cuft/sk. Mix @ 5.21gal/sk FW. Cmt calculated to tieback into intermediate casing @ 1800' w/25% excess.
- iv. Production Liner: This will be a Packer/Port completion from TD up inside 7" casing with packer type liner hanger.

See  
COA

\*Referring to above blends of lite cement: (wt% fly ash : wt% cement : wt% bentonite of the total of first two numbers). Generic names of additives are used since the availability of specific company and products are unknown at this time.

*\*Mewbourne Oil Company reserves the right to change cement designs as hole conditions may warrant.*

## 6. Mud Program:

Interval	Type System	Weight	Viscosity	Fluid Loss
0'-450'	FW spud mud	8.6-9.0	32-34	NA
450'-2000'	Brine water	10.0	29-30	NA
2000'-8957'	FW mud	8.6-8.8	28-30	NA
8957'- TD	FW w/Polymer	8.5-8.7	32-35	15

\*Visual mud monitoring system shall be in place to detect volume changes indicating loss or gain of circulation fluid volume. Sufficient mud materials will be kept on location at all times to combat abnormal conditions.

## 7. Evaluation Program:

Samples: 10' samples from surface casing to TD  
Logging: GR, CNL & Gyro from KOP-100' (8857') to surface and GR from KOP to TD.

## 8. Downhole Conditions

See  
COA

Zones of abnormal pressure:	None anticipated
Zones of lost circulation:	Anticipated in surface and intermediate holes
Maximum bottom hole temperature:	135 degree F
Maximum bottom hole pressure:	8.3 lbs/gal gradient or less (9530' x .43668 = 4161.56 psi per foot.)

## 9. Anticipated Starting Date:

Mewbourne Oil Company intends to drill this well as soon as possible after receiving approval with approximately 45 days involved in drilling operations and an additional 10 days involved in completion operations on the project.

# **Mewbourne Oil Company**

**Eddy County, New Mexico**

**Sec 19-23S-27E Jester 19 W2AP Fed Com #1H**

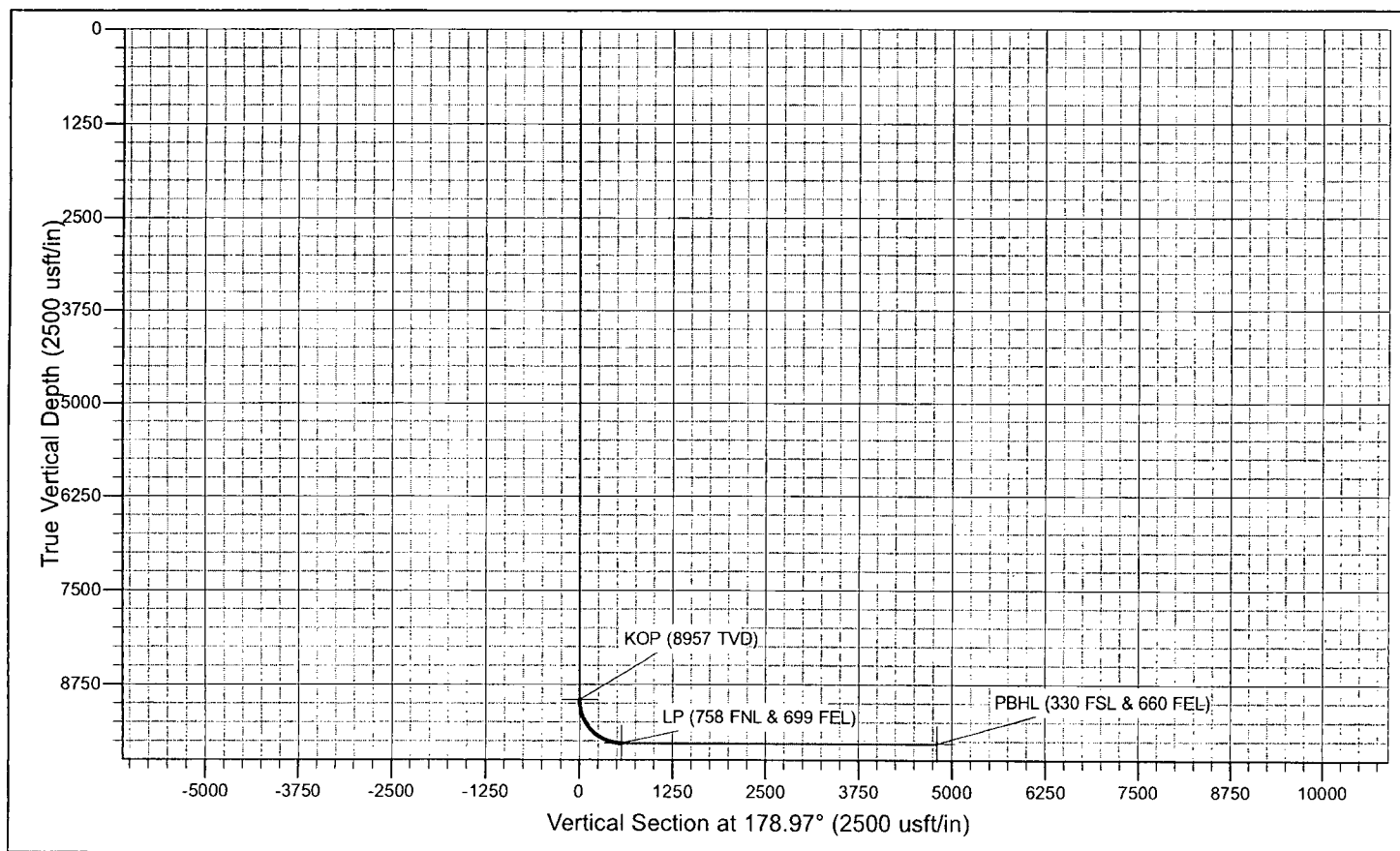
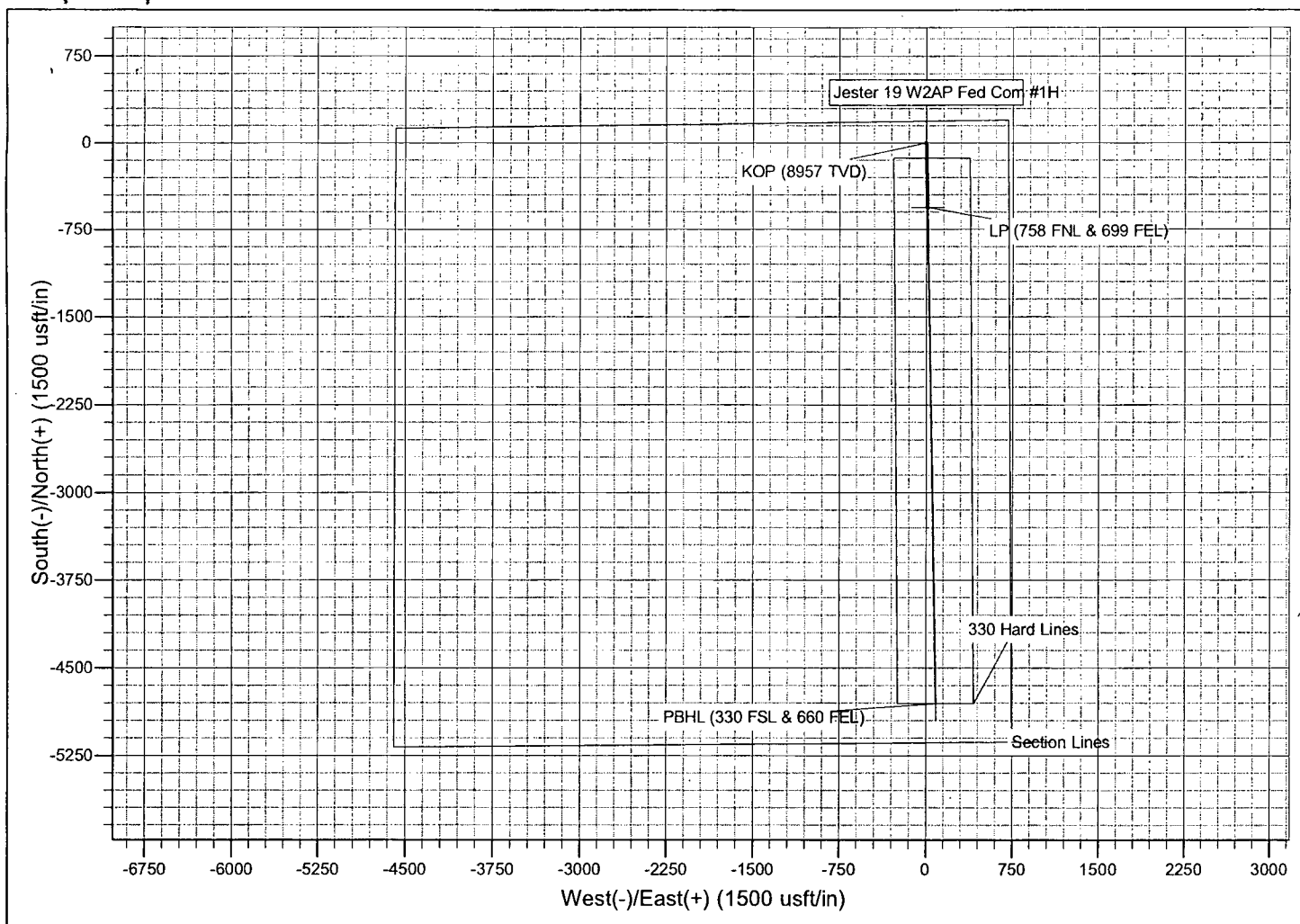
**Jester 19 W2AP Fed Com #1H**

**Original Hole**

**Plan: Design #1**

## **Standard Planning Report**

**02 June, 2014**





# Planning Report

<b>Database:</b>	Hobbs	<b>Local Co-ordinate Reference:</b>	Site Sec 19-23S-27E Jester 19 W2AP Fed Com #1H
<b>Company:</b>	Mewbourne Oil Company	<b>TVD Reference:</b>	WELL @ 3195.0usft (Original Well Elev)
<b>Project:</b>	Eddy County, New Mexico	<b>MD Reference:</b>	WELL @ 3195.0usft (Original Well Elev)
<b>Site:</b>	Sec 19-23S-27E Jester 19 W2AP Fed Com #1H	<b>North Reference:</b>	Grid
<b>Well:</b>	Jester 19 W2AP Fed Com #1H	<b>Survey Calculation Method:</b>	Minimum Curvature
<b>Wellbore:</b>	Original Hole		
<b>Design:</b>	Design #1		

<b>Project</b>	Eddy County, New Mexico		
<b>Map System:</b>	US State Plane 1927 (Exact solution)	<b>System Datum:</b>	Mean Sea Level
<b>Geo Datum:</b>	NAD 1927 (NADCON CONUS)		
<b>Map Zone:</b>	New Mexico East 3001		

<b>Site</b>	Sec 19-23S-27E Jester 19 W2AP Fed Com #1H		
<b>Site Position:</b>		<b>Northing:</b>	471,761.30 usft
<b>From:</b>	Map	<b>Easting:</b>	534,253.50 usft
<b>Position Uncertainty:</b>	0.0 usft	<b>Slot Radius:</b>	13-3/16 "
		<b>Latitude:</b>	32° 17' 48.983 N
		<b>Longitude:</b>	104° 13' 20.919 W
		<b>Grid Convergence:</b>	0.06 °

<b>Well</b>	Jester 19 W2AP Fed Com #1H		
<b>Well Position</b>	<b>+N/-S</b>	0.0 usft	<b>Northing:</b> 471,761.30 usft
	<b>+E/-W</b>	0.0 usft	<b>Easting:</b> 534,253.50 usft
<b>Position Uncertainty</b>	0.0 usft	<b>Wellhead Elevation:</b>	3,195.0 usft
		<b>Latitude:</b>	32° 17' 48.983 N
		<b>Longitude:</b>	104° 13' 20.919 W
		<b>Ground Level:</b>	3,175.0 usft

<b>Wellbore</b>	Original Hole				
<b>Magnetics</b>	<b>Model Name</b>	<b>Sample Date</b>	<b>Declination (°)</b>	<b>Dip Angle (°)</b>	<b>Field Strength (nT)</b>
	IGRF2010	6/2/2014	7.53	60.07	48,295

<b>Design</b>	Design #1			
<b>Audit Notes:</b>				
<b>Version:</b>	<b>Phase:</b>	PROTOTYPE	<b>Tie On Depth:</b>	0.0
<b>Vertical Section:</b>	<b>Depth From (TVD) (usft)</b>	<b>+N/-S (usft)</b>	<b>+E/-W (usft)</b>	<b>Direction (°)</b>
	0.0	0.0	0.0	178.97

<b>Plan Sections</b>										
Measured Depth (usft)	Inclination (°)	Azimuth (°)	Vertical Depth (usft)	+N/-S (usft)	+E/-W (usft)	Dogleg Rate (°/100usft)	Build Rate (°/100usft)	Turn Rate (°/100usft)	TFO (°)	Target
0.0	0.00	0.00	0.0	0.0	0.0	0.00	0.00	0.00	0.00	
8,957.0	0.00	0.00	8,957.0	0.0	0.0	0.00	0.00	0.00	0.00	
9,857.1	90.00	178.97	9,530.0	-572.9	10.3	10.00	10.00	0.00	178.97	
14,089.1	90.00	178.97	9,530.0	-4,804.3	86.1	0.00	0.00	0.00	0.00	PBHL (330 FSL & 6

# Planning Report

<b>Database:</b>	Hobbs	<b>Local Co-ordinate Reference:</b>	Site Sec 19-23S-27E Jester 19 W2AP Fed Com #1H
<b>Company:</b>	Mewbourne Oil Company	<b>TVD Reference:</b>	WELL @ 3195.0usft (Original Well Elev)
<b>Project:</b>	Eddy County, New Mexico	<b>MD Reference:</b>	WELL @ 3195.0usft (Original Well Elev)
<b>Site:</b>	Sec 19-23S-27E Jester 19 W2AP Fed Com #1H	<b>North Reference:</b>	Grid
<b>Well:</b>	Jester 19 W2AP Fed Com #1H	<b>Survey Calculation Method:</b>	Minimum Curvature
<b>Wellbore:</b>	Original Hole		
<b>Design:</b>	Design #1		

Planned Survey										
Measured Depth (usft)	Inclination (°)	Azimuth (°)	Vertical Depth (usft)	+N/-S (usft)	+E/-W (usft)	Vertical Section (usft)	Dogleg Rate (°/100usft)	Build Rate (°/100usft)	Turn Rate (°/100usft)	
0.0	0.00	0.00	0.0	0.0	0.0	0.0	0.00	0.00	0.00	
100.0	0.00	0.00	100.0	0.0	0.0	0.0	0.00	0.00	0.00	
200.0	0.00	0.00	200.0	0.0	0.0	0.0	0.00	0.00	0.00	
300.0	0.00	0.00	300.0	0.0	0.0	0.0	0.00	0.00	0.00	
400.0	0.00	0.00	400.0	0.0	0.0	0.0	0.00	0.00	0.00	
500.0	0.00	0.00	500.0	0.0	0.0	0.0	0.00	0.00	0.00	
600.0	0.00	0.00	600.0	0.0	0.0	0.0	0.00	0.00	0.00	
700.0	0.00	0.00	700.0	0.0	0.0	0.0	0.00	0.00	0.00	
800.0	0.00	0.00	800.0	0.0	0.0	0.0	0.00	0.00	0.00	
900.0	0.00	0.00	900.0	0.0	0.0	0.0	0.00	0.00	0.00	
1,000.0	0.00	0.00	1,000.0	0.0	0.0	0.0	0.00	0.00	0.00	
1,100.0	0.00	0.00	1,100.0	0.0	0.0	0.0	0.00	0.00	0.00	
1,200.0	0.00	0.00	1,200.0	0.0	0.0	0.0	0.00	0.00	0.00	
1,300.0	0.00	0.00	1,300.0	0.0	0.0	0.0	0.00	0.00	0.00	
1,400.0	0.00	0.00	1,400.0	0.0	0.0	0.0	0.00	0.00	0.00	
1,500.0	0.00	0.00	1,500.0	0.0	0.0	0.0	0.00	0.00	0.00	
1,600.0	0.00	0.00	1,600.0	0.0	0.0	0.0	0.00	0.00	0.00	
1,700.0	0.00	0.00	1,700.0	0.0	0.0	0.0	0.00	0.00	0.00	
1,800.0	0.00	0.00	1,800.0	0.0	0.0	0.0	0.00	0.00	0.00	
1,900.0	0.00	0.00	1,900.0	0.0	0.0	0.0	0.00	0.00	0.00	
2,000.0	0.00	0.00	2,000.0	0.0	0.0	0.0	0.00	0.00	0.00	
2,100.0	0.00	0.00	2,100.0	0.0	0.0	0.0	0.00	0.00	0.00	
2,200.0	0.00	0.00	2,200.0	0.0	0.0	0.0	0.00	0.00	0.00	
2,300.0	0.00	0.00	2,300.0	0.0	0.0	0.0	0.00	0.00	0.00	
2,400.0	0.00	0.00	2,400.0	0.0	0.0	0.0	0.00	0.00	0.00	
2,500.0	0.00	0.00	2,500.0	0.0	0.0	0.0	0.00	0.00	0.00	
2,600.0	0.00	0.00	2,600.0	0.0	0.0	0.0	0.00	0.00	0.00	
2,700.0	0.00	0.00	2,700.0	0.0	0.0	0.0	0.00	0.00	0.00	
2,800.0	0.00	0.00	2,800.0	0.0	0.0	0.0	0.00	0.00	0.00	
2,900.0	0.00	0.00	2,900.0	0.0	0.0	0.0	0.00	0.00	0.00	
3,000.0	0.00	0.00	3,000.0	0.0	0.0	0.0	0.00	0.00	0.00	
3,100.0	0.00	0.00	3,100.0	0.0	0.0	0.0	0.00	0.00	0.00	
3,200.0	0.00	0.00	3,200.0	0.0	0.0	0.0	0.00	0.00	0.00	
3,300.0	0.00	0.00	3,300.0	0.0	0.0	0.0	0.00	0.00	0.00	
3,400.0	0.00	0.00	3,400.0	0.0	0.0	0.0	0.00	0.00	0.00	
3,500.0	0.00	0.00	3,500.0	0.0	0.0	0.0	0.00	0.00	0.00	
3,600.0	0.00	0.00	3,600.0	0.0	0.0	0.0	0.00	0.00	0.00	
3,700.0	0.00	0.00	3,700.0	0.0	0.0	0.0	0.00	0.00	0.00	
3,800.0	0.00	0.00	3,800.0	0.0	0.0	0.0	0.00	0.00	0.00	
3,900.0	0.00	0.00	3,900.0	0.0	0.0	0.0	0.00	0.00	0.00	
4,000.0	0.00	0.00	4,000.0	0.0	0.0	0.0	0.00	0.00	0.00	
4,100.0	0.00	0.00	4,100.0	0.0	0.0	0.0	0.00	0.00	0.00	
4,200.0	0.00	0.00	4,200.0	0.0	0.0	0.0	0.00	0.00	0.00	
4,300.0	0.00	0.00	4,300.0	0.0	0.0	0.0	0.00	0.00	0.00	
4,400.0	0.00	0.00	4,400.0	0.0	0.0	0.0	0.00	0.00	0.00	
4,500.0	0.00	0.00	4,500.0	0.0	0.0	0.0	0.00	0.00	0.00	
4,600.0	0.00	0.00	4,600.0	0.0	0.0	0.0	0.00	0.00	0.00	
4,700.0	0.00	0.00	4,700.0	0.0	0.0	0.0	0.00	0.00	0.00	
4,800.0	0.00	0.00	4,800.0	0.0	0.0	0.0	0.00	0.00	0.00	
4,900.0	0.00	0.00	4,900.0	0.0	0.0	0.0	0.00	0.00	0.00	
5,000.0	0.00	0.00	5,000.0	0.0	0.0	0.0	0.00	0.00	0.00	
5,100.0	0.00	0.00	5,100.0	0.0	0.0	0.0	0.00	0.00	0.00	

# Planning Report

<b>Database:</b>	Hobbs	<b>Local Co-ordinate Reference:</b>	Site Sec 19-23S-27E Jester 19 W2AP Fed Com #1H
<b>Company:</b>	Mewbourne Oil Company	<b>TVD Reference:</b>	WELL @ 3195.0usft (Original Well Elev)
<b>Project:</b>	Eddy County, New Mexico	<b>MD Reference:</b>	WELL @ 3195.0usft (Original Well Elev)
<b>Site:</b>	Sec 19-23S-27E Jester 19 W2AP Fed Com #1H	<b>North Reference:</b>	Grid
<b>Well:</b>	Jester 19 W2AP Fed Com #1H	<b>Survey Calculation Method:</b>	Minimum Curvature
<b>Wellbore:</b>	Original Hole		
<b>Design:</b>	Design #1		

Planned Survey									
Measured Depth (usft)	Inclination (°)	Azimuth (°)	Vertical Depth (usft)	+N/-S (usft)	+E/-W (usft)	Vertical Section (usft)	Dogleg Rate (°/100usft)	Build Rate (°/100usft)	Turn Rate (°/100usft)
5,200.0	0.00	0.00	5,200.0	0.0	0.0	0.0	0.00	0.00	0.00
5,300.0	0.00	0.00	5,300.0	0.0	0.0	0.0	0.00	0.00	0.00
5,400.0	0.00	0.00	5,400.0	0.0	0.0	0.0	0.00	0.00	0.00
5,500.0	0.00	0.00	5,500.0	0.0	0.0	0.0	0.00	0.00	0.00
5,600.0	0.00	0.00	5,600.0	0.0	0.0	0.0	0.00	0.00	0.00
5,700.0	0.00	0.00	5,700.0	0.0	0.0	0.0	0.00	0.00	0.00
5,800.0	0.00	0.00	5,800.0	0.0	0.0	0.0	0.00	0.00	0.00
5,900.0	0.00	0.00	5,900.0	0.0	0.0	0.0	0.00	0.00	0.00
6,000.0	0.00	0.00	6,000.0	0.0	0.0	0.0	0.00	0.00	0.00
6,100.0	0.00	0.00	6,100.0	0.0	0.0	0.0	0.00	0.00	0.00
6,200.0	0.00	0.00	6,200.0	0.0	0.0	0.0	0.00	0.00	0.00
6,300.0	0.00	0.00	6,300.0	0.0	0.0	0.0	0.00	0.00	0.00
6,400.0	0.00	0.00	6,400.0	0.0	0.0	0.0	0.00	0.00	0.00
6,500.0	0.00	0.00	6,500.0	0.0	0.0	0.0	0.00	0.00	0.00
6,600.0	0.00	0.00	6,600.0	0.0	0.0	0.0	0.00	0.00	0.00
6,700.0	0.00	0.00	6,700.0	0.0	0.0	0.0	0.00	0.00	0.00
6,800.0	0.00	0.00	6,800.0	0.0	0.0	0.0	0.00	0.00	0.00
6,900.0	0.00	0.00	6,900.0	0.0	0.0	0.0	0.00	0.00	0.00
7,000.0	0.00	0.00	7,000.0	0.0	0.0	0.0	0.00	0.00	0.00
7,100.0	0.00	0.00	7,100.0	0.0	0.0	0.0	0.00	0.00	0.00
7,200.0	0.00	0.00	7,200.0	0.0	0.0	0.0	0.00	0.00	0.00
7,300.0	0.00	0.00	7,300.0	0.0	0.0	0.0	0.00	0.00	0.00
7,400.0	0.00	0.00	7,400.0	0.0	0.0	0.0	0.00	0.00	0.00
7,500.0	0.00	0.00	7,500.0	0.0	0.0	0.0	0.00	0.00	0.00
7,600.0	0.00	0.00	7,600.0	0.0	0.0	0.0	0.00	0.00	0.00
7,700.0	0.00	0.00	7,700.0	0.0	0.0	0.0	0.00	0.00	0.00
7,800.0	0.00	0.00	7,800.0	0.0	0.0	0.0	0.00	0.00	0.00
7,900.0	0.00	0.00	7,900.0	0.0	0.0	0.0	0.00	0.00	0.00
8,000.0	0.00	0.00	8,000.0	0.0	0.0	0.0	0.00	0.00	0.00
8,100.0	0.00	0.00	8,100.0	0.0	0.0	0.0	0.00	0.00	0.00
8,200.0	0.00	0.00	8,200.0	0.0	0.0	0.0	0.00	0.00	0.00
8,300.0	0.00	0.00	8,300.0	0.0	0.0	0.0	0.00	0.00	0.00
8,400.0	0.00	0.00	8,400.0	0.0	0.0	0.0	0.00	0.00	0.00
8,500.0	0.00	0.00	8,500.0	0.0	0.0	0.0	0.00	0.00	0.00
8,600.0	0.00	0.00	8,600.0	0.0	0.0	0.0	0.00	0.00	0.00
8,700.0	0.00	0.00	8,700.0	0.0	0.0	0.0	0.00	0.00	0.00
8,800.0	0.00	0.00	8,800.0	0.0	0.0	0.0	0.00	0.00	0.00
8,900.0	0.00	0.00	8,900.0	0.0	0.0	0.0	0.00	0.00	0.00
8,957.0	0.00	0.00	8,957.0	0.0	0.0	0.0	0.00	0.00	0.00
KOP (8957 TVD)									
9,000.0	4.30	178.97	9,000.0	-1.6	0.0	1.6	10.00	10.00	0.00
9,100.0	14.30	178.97	9,098.5	-17.7	0.3	17.8	10.00	10.00	0.00
9,200.0	24.30	178.97	9,192.8	-50.8	0.9	50.8	10.00	10.00	0.00
9,300.0	34.30	178.97	9,279.9	-99.6	1.8	99.6	10.00	10.00	0.00
9,400.0	44.30	178.97	9,357.2	-162.9	2.9	162.9	10.00	10.00	0.00
9,500.0	54.30	178.97	9,422.3	-238.6	4.3	238.6	10.00	10.00	0.00
9,600.0	64.30	178.97	9,473.3	-324.4	5.8	324.5	10.00	10.00	0.00
9,700.0	74.29	178.97	9,508.6	-417.8	7.5	417.9	10.00	10.00	0.00
9,800.0	84.29	178.97	9,527.2	-515.9	9.2	516.0	10.00	10.00	0.00
9,847.4	89.03	178.97	9,529.9	-563.2	10.1	563.3	10.00	10.00	0.00
LP (758 FNL & 699 FEL)									
9,857.1	90.00	178.97	9,530.0	-572.9	10.3	573.0	10.00	10.00	0.00

# Planning Report

<b>Database:</b>	Hobbs	<b>Local Co-ordinate Reference:</b>	Site Sec 19-23S-27E Jester 19 W2AP Fed Com #1H
<b>Company:</b>	Mewbourne Oil Company	<b>TVD Reference:</b>	WELL @ 3195.0usft (Original Well Elev)
<b>Project:</b>	Eddy County, New Mexico	<b>MD Reference:</b>	WELL @ 3195.0usft (Original Well Elev)
<b>Site:</b>	Sec 19-23S-27E Jester 19 W2AP Fed Com #1H	<b>North Reference:</b>	Grid
<b>Well:</b>	Jester 19 W2AP Fed Com #1H	<b>Survey Calculation Method:</b>	Minimum Curvature
<b>Wellbore:</b>	Original Hole		
<b>Design:</b>	Design #1		

## Planned Survey

Measured Depth (usft)	Inclination (°)	Azimuth (°)	Vertical Depth (usft)	+N/-S (usft)	+E/-W (usft)	Vertical Section (usft)	Dogleg Rate (°/100usft)	Build Rate (°/100usft)	Turn Rate (°/100usft)
9,900.0	90.00	178.97	9,530.0	-615.8	11.0	615.9	0.00	0.00	0.00
10,000.0	90.00	178.97	9,530.0	-715.8	12.8	715.9	0.00	0.00	0.00
10,100.0	90.00	178.97	9,530.0	-815.8	14.6	815.9	0.00	0.00	0.00
10,200.0	90.00	178.97	9,530.0	-915.8	16.4	915.9	0.00	0.00	0.00
10,300.0	90.00	178.97	9,530.0	-1,015.8	18.2	1,015.9	0.00	0.00	0.00
10,400.0	90.00	178.97	9,530.0	-1,115.8	20.0	1,115.9	0.00	0.00	0.00
10,500.0	90.00	178.97	9,530.0	-1,215.7	21.8	1,215.9	0.00	0.00	0.00
10,600.0	90.00	178.97	9,530.0	-1,315.7	23.6	1,315.9	0.00	0.00	0.00
10,700.0	90.00	178.97	9,530.0	-1,415.7	25.4	1,415.9	0.00	0.00	0.00
10,800.0	90.00	178.97	9,530.0	-1,515.7	27.2	1,515.9	0.00	0.00	0.00
10,900.0	90.00	178.97	9,530.0	-1,615.7	29.0	1,615.9	0.00	0.00	0.00
11,000.0	90.00	178.97	9,530.0	-1,715.7	30.7	1,715.9	0.00	0.00	0.00
11,100.0	90.00	178.97	9,530.0	-1,815.6	32.5	1,815.9	0.00	0.00	0.00
11,200.0	90.00	178.97	9,530.0	-1,915.6	34.3	1,915.9	0.00	0.00	0.00
11,300.0	90.00	178.97	9,530.0	-2,015.6	36.1	2,015.9	0.00	0.00	0.00
11,400.0	90.00	178.97	9,530.0	-2,115.6	37.9	2,115.9	0.00	0.00	0.00
11,500.0	90.00	178.97	9,530.0	-2,215.6	39.7	2,215.9	0.00	0.00	0.00
11,600.0	90.00	178.97	9,530.0	-2,315.6	41.5	2,315.9	0.00	0.00	0.00
11,700.0	90.00	178.97	9,530.0	-2,415.5	43.3	2,415.9	0.00	0.00	0.00
11,800.0	90.00	178.97	9,530.0	-2,515.5	45.1	2,515.9	0.00	0.00	0.00
11,900.0	90.00	178.97	9,530.0	-2,615.5	46.9	2,615.9	0.00	0.00	0.00
12,000.0	90.00	178.97	9,530.0	-2,715.5	48.7	2,715.9	0.00	0.00	0.00
12,100.0	90.00	178.97	9,530.0	-2,815.5	50.5	2,815.9	0.00	0.00	0.00
12,200.0	90.00	178.97	9,530.0	-2,915.5	52.2	2,915.9	0.00	0.00	0.00
12,300.0	90.00	178.97	9,530.0	-3,015.4	54.0	3,015.9	0.00	0.00	0.00
12,400.0	90.00	178.97	9,530.0	-3,115.4	55.8	3,115.9	0.00	0.00	0.00
12,500.0	90.00	178.97	9,530.0	-3,215.4	57.6	3,215.9	0.00	0.00	0.00
12,600.0	90.00	178.97	9,530.0	-3,315.4	59.4	3,315.9	0.00	0.00	0.00
12,700.0	90.00	178.97	9,530.0	-3,415.4	61.2	3,415.9	0.00	0.00	0.00
12,800.0	90.00	178.97	9,530.0	-3,515.4	63.0	3,515.9	0.00	0.00	0.00
12,900.0	90.00	178.97	9,530.0	-3,615.4	64.8	3,615.9	0.00	0.00	0.00
13,000.0	90.00	178.97	9,530.0	-3,715.3	66.6	3,715.9	0.00	0.00	0.00
13,100.0	90.00	178.97	9,530.0	-3,815.3	68.4	3,815.9	0.00	0.00	0.00
13,200.0	90.00	178.97	9,530.0	-3,915.3	70.2	3,915.9	0.00	0.00	0.00
13,300.0	90.00	178.97	9,530.0	-4,015.3	72.0	4,015.9	0.00	0.00	0.00
13,400.0	90.00	178.97	9,530.0	-4,115.3	73.8	4,115.9	0.00	0.00	0.00
13,500.0	90.00	178.97	9,530.0	-4,215.3	75.5	4,215.9	0.00	0.00	0.00
13,600.0	90.00	178.97	9,530.0	-4,315.2	77.3	4,315.9	0.00	0.00	0.00
13,700.0	90.00	178.97	9,530.0	-4,415.2	79.1	4,415.9	0.00	0.00	0.00
13,800.0	90.00	178.97	9,530.0	-4,515.2	80.9	4,515.9	0.00	0.00	0.00
13,900.0	90.00	178.97	9,530.0	-4,615.2	82.7	4,615.9	0.00	0.00	0.00
14,000.0	90.00	178.97	9,530.0	-4,715.2	84.5	4,715.9	0.00	0.00	0.00
14,089.1	90.00	178.97	9,530.0	-4,804.3	86.1	4,805.1	0.00	0.00	0.00

PBHL (330 FSL & 660 FEL)



# Planning Report

<b>Database:</b>	Hobbs	<b>Local Co-ordinate Reference:</b>	Site Sec 19-23S-27E Jester 19 W2AP Fed Com #1H
<b>Company:</b>	Mewbourne Oil Company	<b>TVD Reference:</b>	WELL @ 3195.0usft (Original Well Elev)
<b>Project:</b>	Eddy County, New Mexico	<b>MD Reference:</b>	WELL @ 3195.0usft (Original Well Elev)
<b>Site:</b>	Sec 19-23S-27E Jester 19 W2AP Fed Com #1H	<b>North Reference:</b>	Grid
<b>Well:</b>	Jester 19 W2AP Fed Com #1H	<b>Survey Calculation Method:</b>	Minimum Curvature
<b>Wellbore:</b>	Original Hole		
<b>Design:</b>	Design #1		

## Design Targets

Target Name	Dip Angle	Dip Dir.	TVD	+N-S	+E-W	Northing	Easting	Latitude	Longitude
- hit/miss target	(°)	(°)	(usft)	(usft)	(usft)	(usft)	(usft)		
- Shape									
KOP (8957 TVD) - plan hits target center - Point	0.00	0.00	8,957.0	0.0	0.0	471,761.30	534,253.50	32° 17' 48.983 N	104° 13' 20.919 W
PBHL (330 FSL & 66C) - plan hits target center - Point	0.00	0.00	9,530.0	-4,804.3	86.1	466,957.00	534,339.60	32° 17' 1.437 N	104° 13' 19.974 W
LP (758 FNL & 699 FI) - plan misses target center by 0.6usft at 9847.4usft MD (9529.9 TVD, -563.2 N, 10.1 E) - Point	0.00	0.00	9,530.0	-563.2	9.5	471,198.10	534,263.00	32° 17' 43.409 N	104° 13' 20.815 W

## Casing Points

Measured Depth	Vertical Depth	Name	Casing Diameter	Hole Diameter
(usft)	(usft)		(")	(")
9,857.1	9,530.0	7"	7	8-3/4

# 13 5/8" 2M BOPE & Closed Loop Equipment Schematic

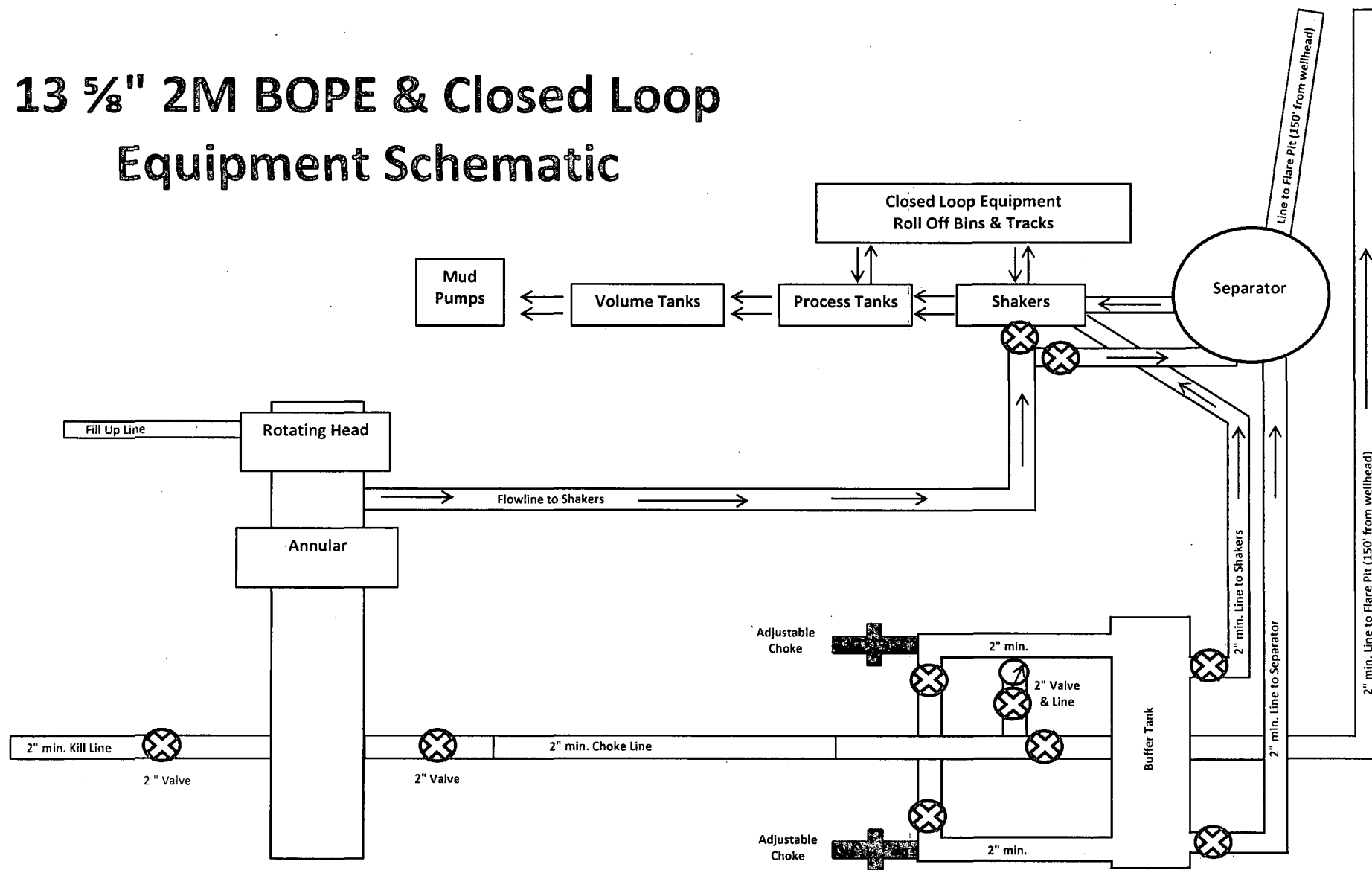


EXHIBIT "2"

Jester 19 W2AP Fed Com #1H



# 11" 5M BOPE & Closed Loop Equipment Schematic

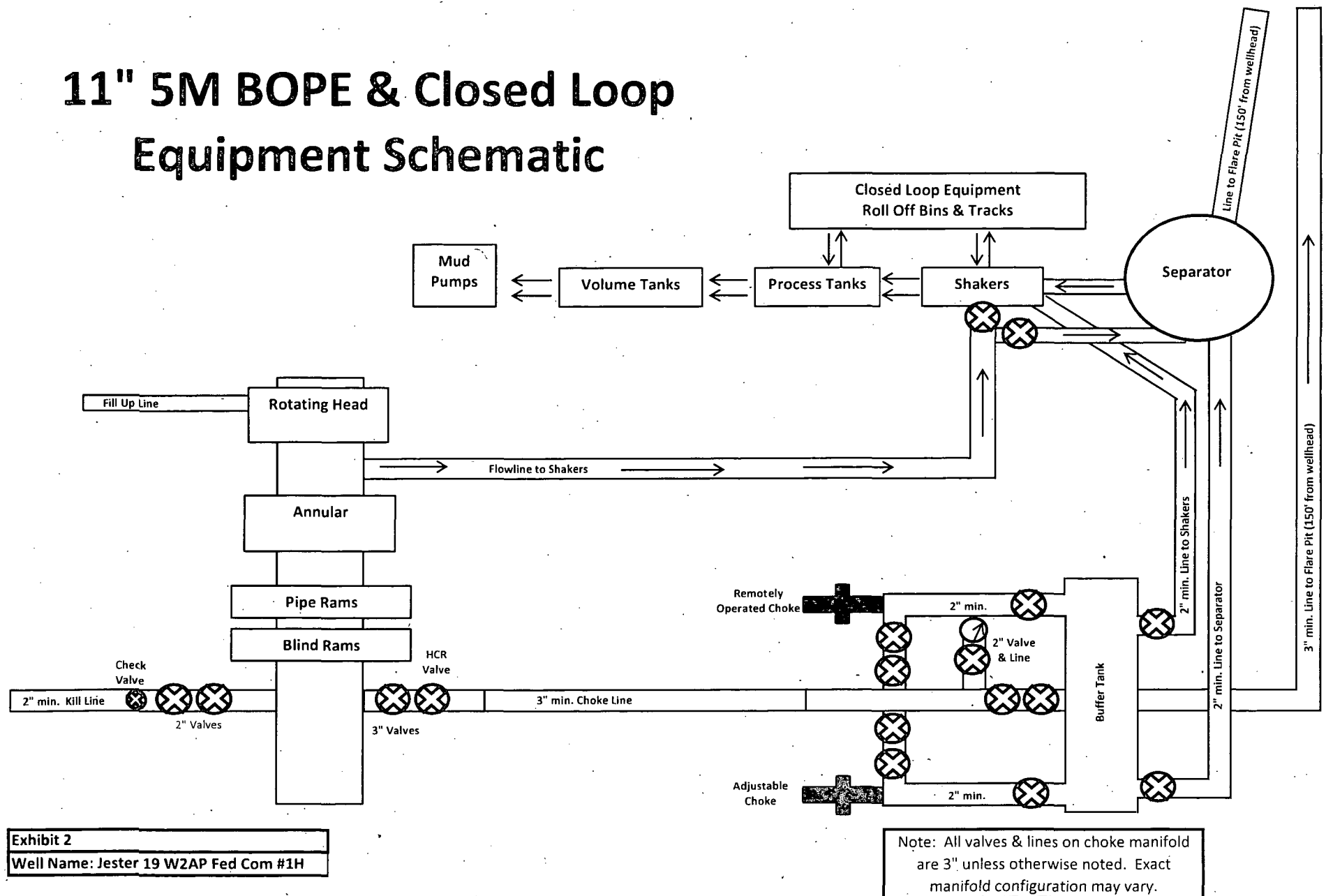


Exhibit 2  
Well Name: Jester 19 W2AP Fed Com #1H

**Notes Regarding Blowout Preventer**

**Mewbourne Oil Company**

Jester 19 W2AP Fed Com #1H

185' FNL & 710' FEL (SHL)

Sec 19-T23S-R27E

Eddy County, New Mexico

- I. Drilling nipple (bell nipple) to be constructed so that it can be removed without the use of a welder through the opening of the rotary table, with minimum internal diameter equal to blowout preventer bore.
- II. Blowout preventer and all fittings must be in good condition with a minimum 3000 psi working pressure on 9 5/8" and 7" casing.
- III. Safety valve must be available on the rig floor at all times with proper connections to install in the drill string. Valve must be full bore with minimum 3000 psi working pressure.
- IV. Equipment through which bit must pass shall be at least as large as internal diameter of the casing.
- V. A kelly cock shall be installed on the kelly at all times.

Blowout preventer closing equipment to include and accumulator of at least 40 gallon capacity, two independent sources of pressure on closing unit, and meet all other API specifications.

H2S Diagram  
Closed Loop Pad Dimensions 280' x 340'

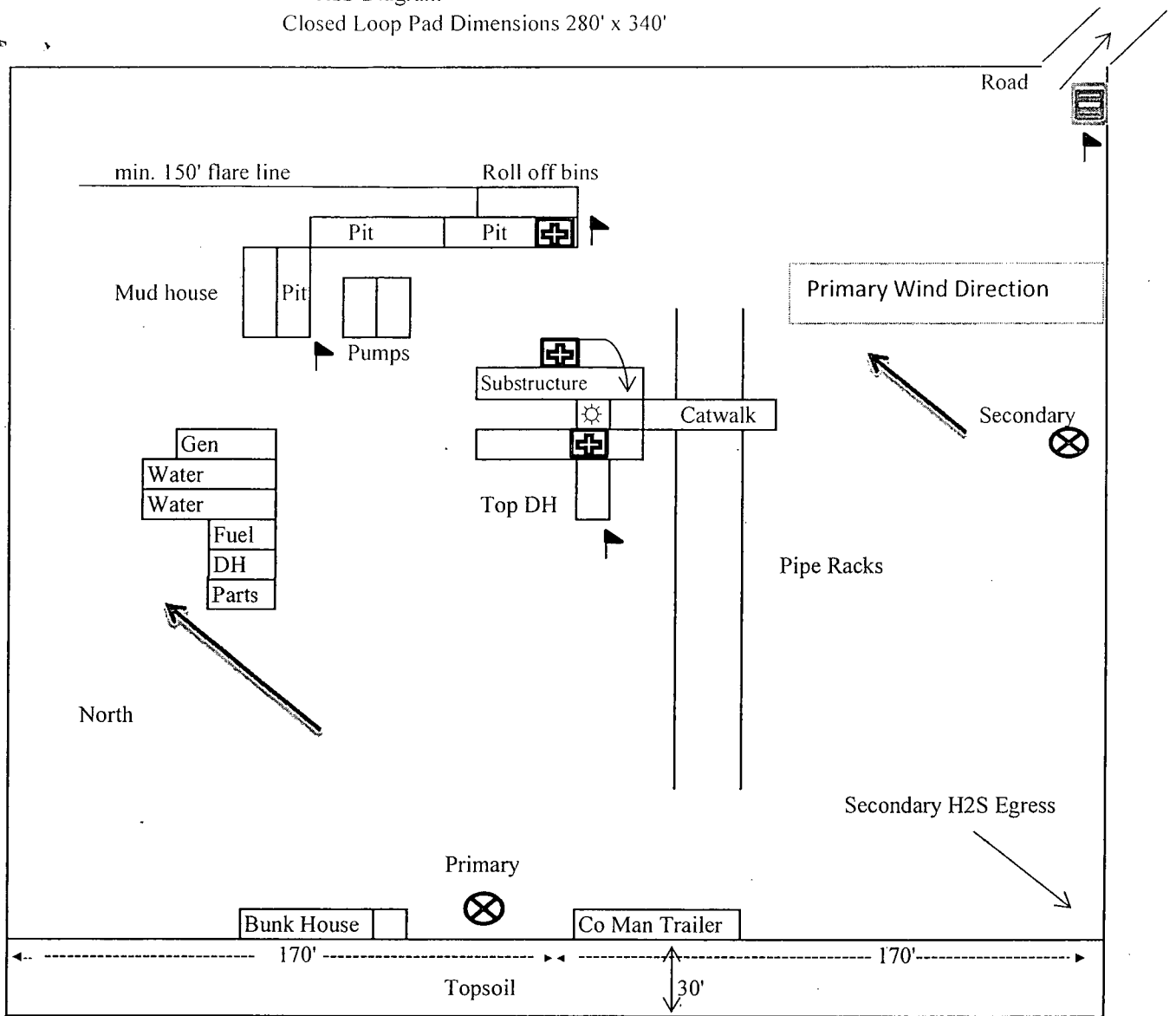


Exhibit 5



= Safety Stations



= Wind Markers



= H2S Monitors



= Warning Signs

Mewbourne Oil Company  
Jester W2AP Fed Com #1H  
185' FNL & 710' FEL  
Sec. 19 T23S R27E  
Eddy County, NM

## Hydrogen Sulfide Drilling Operations Plan

**Mewbourne Oil Company**  
Jester 19 W2AP Fed Com #1H  
185' FNL & 710' FEL (SL)  
Sec 19-T23S-R27E  
Eddy County, New Mexico

### **1. General Requirements**

Rule 118 does not apply to this well because MOC has researched this area and no high concentrations of H<sub>2</sub>S were found. MOC will have on location and working all H<sub>2</sub>S safety equipment before the Delaware formation for purposes of safety and insurance requirements.

### **2. Hydrogen Sulfide Training**

All personnel, whether regularly assigned, contracted, or employed on an unscheduled basis, will have received training from a qualified instructor in the following areas prior to entering the drilling pad area of the well:

1. The hazards and characteristics of hydrogen sulfide gas.
2. The proper use of personal protective equipment and life support systems.
3. The proper use of hydrogen sulfide detectors, alarms, warning systems, briefing areas, evacuation procedures.
4. The proper techniques for first aid and rescue operations.

Additionally, supervisory personnel will be trained in the following areas:

- 1 The effects of hydrogen sulfide on metal components. If high tensile tubular systems are utilized, supervisory personnel will be trained in their special maintenance requirements.
- 2 Corrective action and shut in procedures, blowout prevention, and well control procedures while drilling a well.
- 3 The contents of the Hydrogen Sulfide Drilling Operations Plan.

There will be an initial training session prior to encountering a known hydrogen sulfide source. The initial training session shall include a review of the site specific Hydrogen Sulfide Drilling Operations Plan.

### **3. Hydrogen Sulfide Safety Equipment and Systems**

All hydrogen sulfide safety equipment and systems will be installed, tested, and operational prior to drilling below the 9-5/8" intermediate casing.

1. Well Control Equipment
  - A. Choke manifold with minimum of one adjustable choke/remote choke.
  - B. Blowout preventers equipped with blind rams and pipe rams to accommodate all pipe sizes with properly sized closing unit
  - C. Auxiliary equipment including annular type blowout preventer.
2. Protective Equipment for Essential Personnel

Thirty minute self contained work unit located in the dog house and at briefing areas.

Additionally: If H<sub>2</sub>S is encountered in concentrations less than 10 ppm, fans will be placed in work areas to prevent the accumulation of hazardous amounts of poisonous gas. If higher concentrations of H<sub>2</sub>S are detected the well will be shut in MOC will follow Onshore Order 6 and install a rotating head, mud/gas separator, remote choke and flare line with igniter will be installed.

3. Hydrogen Sulfide Protection and Monitoring Equipment

Two portable hydrogen sulfide monitors positioned on location for optimum coverage and detection. The units shall have audible sirens to notify personnel when hydrogen sulfide levels exceed 20 PPM.

4. Visual Warning Systems

A. Wind direction indicators as indicated on the well site diagram.

B. Caution signs shall be posted on roads providing access to location. Signs shall be painted a high visibility color with lettering of sufficient size to be readable at reasonable distances from potentially contaminated areas.

4. **Mud Program**

The mud program has been designed to minimize the amount of hydrogen sulfide entrained in the mud system. Proper mud weight, safe drilling practices, and the use of hydrogen sulfide scavengers will minimize hazards while drilling the well.

5. **Metallurgy**

All tubular systems, wellheads, blowout preventers, drilling spools, kill lines, choke manifolds, and valves shall be suitable for service in a hydrogen sulfide environment when chemically treated.

6. **Communications**

State & County officials' phone numbers are posted on rig floor and supervisors trailer. Communications in company vehicles and toolpushers are either two way radios or cellular phones.

7. **Well Testing**

Drill stem testing is not an anticipated requirement for evaluation of this well. A drill stem test is required and will be conducted with a minimum number of personnel in the immediate vicinity. The test will be conducted during daylight hours only.

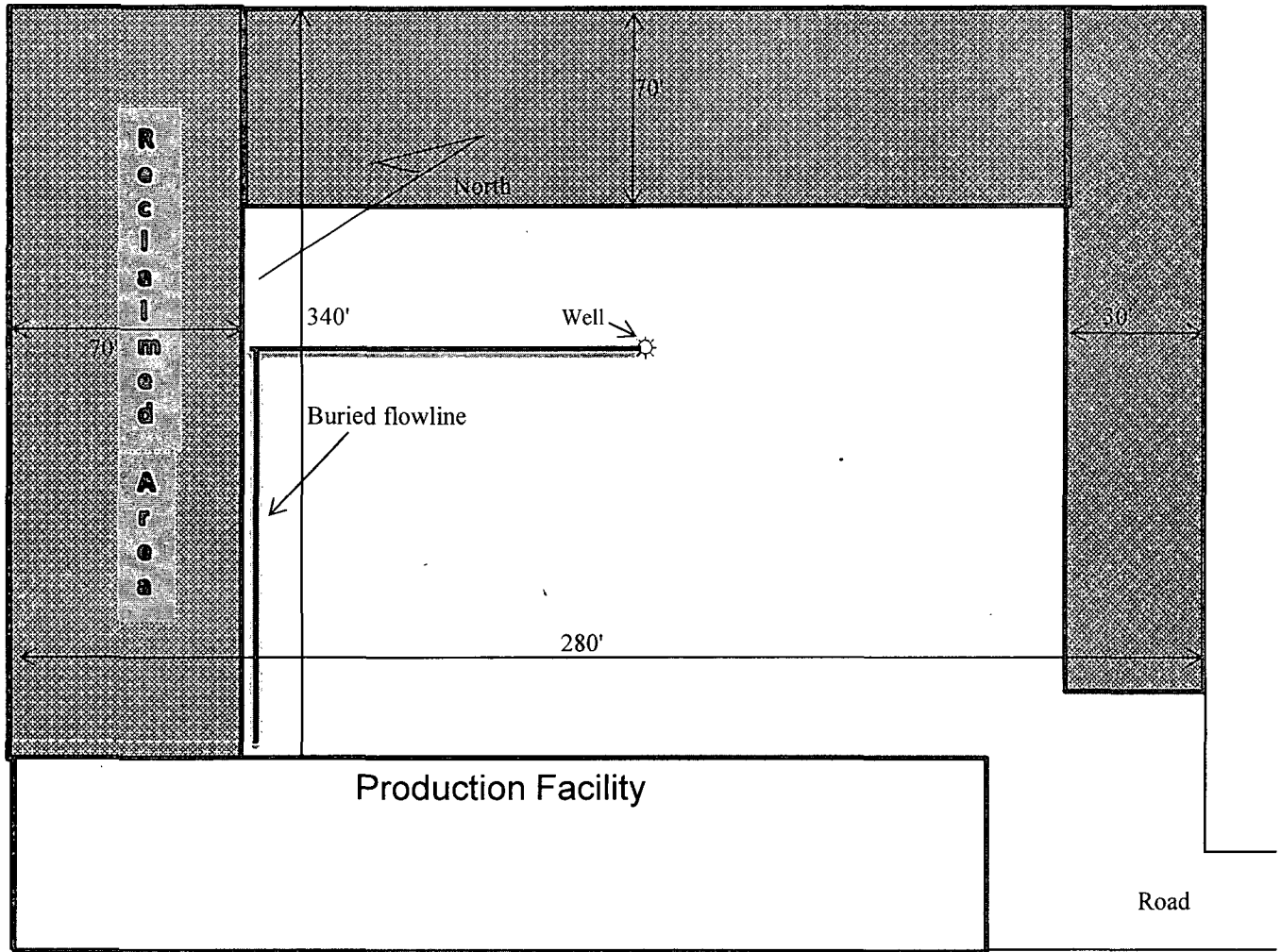
8. **Emergency Phone Numbers**

Lea County Sheriff's Office	911 or 575-396-3611
Ambulance Service	911 or 575-885-2111
Carlsbad Fire Dept	911 or 575-885-2111
Closest Medical Facility - Columbia Medical Center of Carlsbad	575-492-5000

Mewbourne Oil Company	Hobbs District Office	575-393-5905
	Fax	575-397-6252
	2 <sup>nd</sup> Fax	575-393-7259

District Manager	Robin Terrell	575-390-4816
Drilling Superintendent	Frosty Lathan	575-390-4103
	Bradley Bishop	575-390-6838
Drilling Foreman	Wesley Noseff	575-441-0729

Closed Loop Pad Dimensions 280' x 340'



Mewbourne Oil Company  
Jester 19 W2AP Fed Com #1H  
185' FNL & 710' FEL  
Sec. 19 T23S R27E  
Eddy Co. NM



## **SURFACE USE PLAN OF OPERATIONS**

### **MEWBOURNE OIL COMPANY**

Jester 19 W2AP Fed Com #1H  
185' FNL & 710' FEL (SHL)  
Sec. 19 – T23S-R27E  
Eddy County, New Mexico

### **Introduction**

This plan is submitted with Form 3160-3, Application for Permit to Drill, Covering the above described well. The purpose of this plan is to describe the location of the proposed well, the proposed construction activities and operations plan, the magnitude of the surface disturbance involved, and the procedures to be followed in restoring the surface so that a complete appraisal can be made of the environmental impact associated with the proposed operations.

### **1. Existing Roads**

- a. The existing access road route to the proposed project is depicted on **Exhibit 3E**. Improvements to the driving surface will be done where necessary. No new surface disturbance will be done, unless otherwise noted in the New or Reconstructed Access Roads section of this surface use plan.
- b. The existing oil and gas roads utilized to access the proposed project will be maintained by crowning, clearing ditches, and fixing potholes. All existing structures on the entire access route such as cattleguards, other range improvement projects, culverts, etc. will be properly repaired or replaced if they are damaged or have deteriorated beyond practical use.
- c. Mewbourne Oil Co. will cooperate with other operators in the maintenance of lease roads.

### **2. New or Reconstructed Access Roads**

- a. An access road will be needed for this proposed project. See the survey plat(s) for the location of the access road.
- b. The length of access road needed to be constructed for this proposed project is about **496.5 feet**.
- c. The access road will be 14 feet wide and will be constructed with 6 inches of compacted caliche. A 25 foot wide area would be needed to construct the road.
- d. When the road travels on fairly level ground, the road will be crowned and ditched with a 2% slope from the tip of the road crown to the edge of the driving surface. The ditches will be 3 feet wide with 3:1 slopes.
- e. The access road will be constructed with a ditch on each side of the road.
- f. The maximum grade for the access road will be 5 percent.
- g. If the road is longer than 1,000 feet, turnouts will be constructed with an interval of 1,000 feet. Turnouts will be intervisible and will be 10 feet wide and 100 feet long.
- h. Low water crossings will be constructed where drainages cross the access road.

- i. Construction of new or reconstructed roads, on surface under the jurisdiction of the Bureau of Land Management will include ditching, draining, crowning and capping or sloping and dipping the roadbed as necessary to provide a well-drained and safe road.
- j. An appropriately sized cattle guard will be installed where the proposed access road crosses a fence line.
- k. A New Mexico State Land Office right-of-way grant is needed for the construction of this access road and one will be acquired prior to construction.
- l. Lead-off ditches will be constructed for the proposed access road, but will not extend more than 15 feet outside the road edge.

### **3. Location of Existing Wells**

- a. Exhibit 4, 4A of the APD depicts all known wells within a one mile radius of the proposed well.

### **4. Location of Existing and/or Proposed Production Facilities**

- a. All permanent, lasting more than 6 months, above ground structures including but not limited to pumpjacks, storage tanks, pipeline risers, meter housing, etc. that are not subject to safety requirements will be painted a non-reflective paint color that blends in with the surrounding landscape. The paint color will be one of the colors from the BLM Standard Environmental Colors chart selected by the BLM authorized officer.
- b. All proposed production facilities that are located on the well pad will be strategically placed to allow for maximum interim reclamation, recontouring, and revegetation of the well location.
- c. If any plans change regarding the production facility or other infrastructure (pipeline, electric line, etc.), we will submit a sundry notice or right of way (if applicable) prior to installation of construction.
- d. An electric line will be applied for through a sundry notice or BLM right of way at a later date.

### **5. Location and Types of Water**

- a. The well will be drilled with a combination of fresh water and brine water based mud systems. The water will be obtained from commercial suppliers in the area and/or hauled to the location by transport trucks over existing and proposed roads as identified above in this surface use plan.

## **6. Construction Materials**

- a. Construction material that will be used to build the well pad and road will be caliche.
- b. The construction contractor will be solely responsible for securing construction materials required for this operation and paying any royalties that may be required on those materials.
- c. Obtaining caliche: One way of obtaining caliche to build locations and roads will be by “turning over” the location. This means, caliche will be obtained from the actual well site. A caliche permit will be obtained from BLM prior to obtaining caliche. Amount of caliche will vary for each pad. The procedure below has been approved by BLM personnel:
  - i. The top 6 inches of topsoil is pushed off and stockpiled along the side of the location.
  - ii. An approximate 160' X 160' area is used within the proposed well site to remove caliche.
  - iii. Subsoil is removed and stockpiled within the surveyed well pad.
  - iv. When caliche is found, material will be stock piled within the pad site to build the location and road.
  - v. Then subsoil is pushed back in the hole and caliche is spread accordingly across entire location and road.
  - vi. Once well is drilled, the stock piled top soil will be used for interim reclamation and spread along areas where caliche is picked up and the location size is reduced.
  - vii. Neither caliche, nor subsoil will be stock piled outside of the well pad. Topsoil will be stockpiled along the edge of the pad as depicted in the Well Site Layout or survey plat.

In the event that no caliche is found onsite, caliche will be hauled in from a BLM, state, or private mineral pit. A BLM mineral material permit will be acquired prior to obtaining any mineral material from BLM pits or land.

## **7. Methods of Handling Waste**

- a. The well will be drilled utilizing a closed loop system. Drill cuttings will be properly contained in steel tanks and taken to an NMOCD approved disposal facility.
- b. Drilling fluids and produced oil and water from the well during completion operations will be stored safely in closed containers and disposed of properly in an NMOCD approved disposal facility.

- c. Garbage and trash produced during drilling and completion operations will be collected in trash containers and disposed of properly at a state approved site. All trash on and around the well site will be collected for disposal.
- d. All human waste and grey water from drilling and completion operations will be properly contained and disposed of properly at a disposal facility.
- e. After drilling and completion operations, trash, chemicals, salts, frac sand and other waste material will be removed and disposed of properly at a disposal site.

## **8. Ancillary Facilities**

- a. No ancillary facilities will be needed for this proposed project.

## **9. Well Site Layout**

- a. The proposed drilling pad to be built was staked and surveyed by a professional surveyor. The attached survey plat of the well site depicts the drilling pad layout as staked.
- b. A title of a well site diagram is **Exhibit 5**. This diagram depicts the rig layout.
- c. In areas to be heavily disturbed, the top 6 inches of soil material, will be stripped and stockpiled on the perimeter of the well location to keep topsoil viable, and to make redistribution of topsoil more efficient during interim reclamation. Stockpiled topsoil should include vegetative material. Topsoil will be clearly segregated and stored separately from subsoils. Contaminated soil will not be stockpiled, but properly treated and handled prior to topsoil salvaging.

## **10. Plans for Surface Reclamation**

Within 90 days of cessation of drilling and completion operations, all equipment not necessary for production operations will be removed. The location will be cleaned of all trash and junk to assure the well site is left as aesthetically pleasing as reasonably possible.

### **a. Interim Reclamation (well pad)**

- i. Interim reclamation will be performed on the well site after the well is drilled and completed. **Exhibit 6** depicts the location and dimensions of the planned interim reclamation for the well site.
- ii. The well location and surrounding areas will be cleared of, and maintained free of, all materials, trash, and equipment not required for production.
- iii. In areas planned for interim reclamation, all the surfacing material will be removed and returned to the original mineral pit or recycled to repair or build roads and well pads.

- iv. The areas planned for interim reclamation will then be recontoured to the original contour if feasible, or if not feasible, to an interim contour that blends with the surrounding topography as much as possible. Where applicable, the fill material of the well pad will be backfilled into the cut to bring the area back to the original contour. The interim cut and fill slopes prior to re-seeding will not be steeper than a 3:1 ratio, unless the adjacent native topography is steeper. Note: Constructed slopes may be much steeper during drilling, but will be recontoured to the above ratios during interim reclamation.
- v. Topsoil will be evenly respread and aggressively revegetated over the entire disturbed area not needed for all-weather operations including cuts & fills. To seed the area, the proper BLM seed mixture, free of noxious weeds, will be used. Final seedbed preparation will consist of contour cultivating to a depth of 4 to 6 inches within 24 hours prior to seeding, dozer tracking, or other imprinting in order to break the soil crust and create seed germination micro-sites.
- vi. Proper erosion control methods will be used on the area to control erosion, runoff and siltation of the surrounding area.
- vii. The interim reclamation will be monitored periodically to ensure that vegetation has reestablished and that erosion and invasive/noxious weeds are controlled.

**b. Final Reclamation (well pad, buried pipelines, etc.)**

- i. Prior to final reclamation procedures, the well pad, road, and surrounding area will be cleared of material, trash, and equipment.
- ii. All surfacing material will be removed and returned to the original mineral pit or recycled to repair or build roads and well pads.
- iii. All disturbed areas, including roads, pipelines, pads, production facilities, and interim reclaimed areas will be recontoured to the contour existing prior to initial construction or a contour that blends indistinguishably with the surrounding landscape. Topsoil that was spread over the interim reclamation areas will be stockpiled prior to recontouring. The topsoil will be redistributed evenly over the entire disturbed site to ensure successful revegetation.
- iv. After all the disturbed areas have been properly prepared, the areas will be seeded with the proper BLM seed mixture, free of noxious weeds. Final seedbed preparation will consist of contour cultivating to a depth of 4 to 6 inches within 24 hours prior to seeding, dozer tracking, or other imprinting in order to break the soil crust and create seed germination micro-sites.

- v. Proper erosion control methods will be used on the entire area to control erosion, runoff and siltation of the surrounding area.
- vi. All unused equipment and structures including pipelines, electric line poles, tanks, etc. that serviced the well will be removed.
- vii. All reclaimed areas will be monitored periodically to ensure that revegetation occurs, that the area is not redisturbed, and that erosion and invasive/noxious weeds are controlled.

#### **11. Surface Ownership**

- a. The surface ownership of the proposed project is the State of New Mexico (New Mexico State Land Office).
- b. Surface use is provided under the terms of the lease.

#### **12. Other Information**

- a. No other information is needed at this time.

#### **13. Operator's Representative**

- a. Through APD approval, drilling, completion and production operations:

**Robin Terrell, District Manager**  
Mewbourne Oil Company  
PO Box 5270  
Hobbs, NM 88241  
575-393-5905

# PECOS DISTRICT CONDITIONS OF APPROVAL

<b>OPERATOR'S NAME:</b>	<b>Mewbourne Oil Company</b>
<b>LEASE NO.:</b>	<b>NMNM--0540701</b>
<b>WELL NAME &amp; NO.:</b>	<b>Jester 19 W2AP Fed Com 1H</b>
<b>SURFACE HOLE FOOTAGE:</b>	<b>0185' FNL &amp; 0710' FEL</b>
<b>BOTTOM HOLE FOOTAGE:</b>	<b>0330' FSL &amp; 0660' FEL</b>
<b>LOCATION:</b>	<b>Section 19, T. 23 S., R 27 E., NMPM</b>
<b>COUNTY:</b>	<b>Eddy County, New Mexico</b>

## TABLE OF CONTENTS

Standard Conditions of Approval (COA) apply to this APD. If any deviations to these standards exist or special COAs are required, the section with the deviation or requirement will be checked below.

- ☐ **General Provisions**
- ☐ **Permit Expiration**
- ☐ **Archaeology, Paleontology, and Historical Sites**
- ☐ **Noxious Weeds**
- ☒ **Special Requirements**
  - Communitization Agreement
- ☐ **Construction**
  - Notification
  - Topsoil
  - Closed Loop System
  - Federal Mineral Material Pits
  - Well Pads
  - Roads
- ☐ **Road Section Diagram**
- ☒ **Drilling**
  - Medium Cave/Karst
  - Capitan water basin
  - Witness surface casing
- ☐ **Production (Post Drilling)**
  - Well Structures & Facilities
- ☐ **Interim Reclamation**
- ☐ **Final Abandonment & Reclamation**



## **I. GENERAL PROVISIONS**

The approval of the Application For Permit To Drill (APD) is in compliance with all applicable laws and regulations: 43 Code of Federal Regulations 3160, the lease terms, Onshore Oil and Gas Orders, Notices To Lessees, New Mexico Oil Conservation Division (NMOCD) Rules, National Historical Preservation Act As Amended, and instructions and orders of the Authorized Officer. Any request for a variance shall be submitted to the Authorized Officer on Form 3160-5, Sundry Notices and Report on Wells.

## **II. PERMIT EXPIRATION**

If the permit terminates prior to drilling and drilling cannot be commenced within 60 days after expiration, an operator is required to submit Form 3160-5, Sundry Notices and Reports on Wells, requesting surface reclamation requirements for any surface disturbance. However, if the operator will be able to initiate drilling within 60 days after the expiration of the permit, the operator must have set the conductor pipe in order to allow for an extension of 60 days beyond the expiration date of the APD. (Filing of a Sundry Notice is required for this 60 day extension.)

## **III. ARCHAEOLOGICAL, PALEONTOLOGY & HISTORICAL SITES**

Any cultural and/or paleontological resource discovered by the operator or by any person working on the operator's behalf shall immediately report such findings to the Authorized Officer. The operator is fully accountable for the actions of their contractors and subcontractors. The operator shall suspend all operations in the immediate area of such discovery until written authorization to proceed is issued by the Authorized Officer. An evaluation of the discovery shall be made by the Authorized Officer to determine the appropriate actions that shall be required to prevent the loss of significant cultural or scientific values of the discovery. The operator shall be held responsible for the cost of the proper mitigation measures that the Authorized Officer assesses after consultation with the operator on the evaluation and decisions of the discovery. Any unauthorized collection or disturbance of cultural or paleontological resources may result in a shutdown order by the Authorized Officer.

## **IV. NOXIOUS WEEDS**

The operator shall be held responsible if noxious weeds become established within the areas of operations. Weed control shall be required on the disturbed land where noxious weeds exist, which includes the roads, pads, associated pipeline corridor, and adjacent land affected by the establishment of weeds due to this action. The operator shall consult with the Authorized Officer for acceptable weed control methods, which include following EPA and BLM requirements and policies.

## **V. SPECIAL REQUIREMENT(S)**

### **Communitization Agreement**

A Communitization Agreement covering the acreage dedicated to this well must be filed for approval with the BLM. The effective date of the agreement shall be prior to any sales. In addition, the well sign shall include the surface and bottom hole lease numbers. If the Communitization Agreement number is known, it shall also be on the sign. If not, it shall be placed on the sign when the sign is replaced.

## **VI. CONSTRUCTION**

### **A. NOTIFICATION**

The BLM shall administer compliance and monitor construction of the access road and well pad. Notify the Carlsbad Field Office at (575) 234-5909 at least 3 working days prior to commencing construction of the access road and/or well pad.

When construction operations are being conducted on this well, the operator shall have the approved APD and Conditions of Approval (COA) on the well site and they shall be made available upon request by the Authorized Officer.

### **B. TOPSOIL**

The operator shall strip the top portion of the soil (root zone) from the entire well pad area and stockpile the topsoil along the edge of the well pad as depicted in the APD. The root zone is typically six (6) inches in depth. All the stockpiled topsoil will be redistributed over the interim reclamation areas. Topsoil shall not be used for berming the pad or facilities. For final reclamation, the topsoil shall be spread over the entire pad area for seeding preparation.

Other subsoil (below six inches) stockpiles must be completely segregated from the topsoil stockpile. Large rocks or subsoil clods (not evident in the surrounding terrain) must be buried within the approved area for interim and final reclamation.

### **C. CLOSED LOOP SYSTEM**

Tanks are required for drilling operations: No Pits.

The operator shall properly dispose of drilling contents at an authorized disposal site.

### **D. FEDERAL MINERAL MATERIALS PIT**

Payment shall be made to the BLM prior to removal of any federal mineral materials. Call the Carlsbad Field Office at (575) 234-5972.

### **E. WELL PAD SURFACING**

Surfacing of the well pad is not required.

If the operator elects to surface the well pad, the surfacing material may be required to be removed at the time of reclamation. The well pad shall be constructed in a manner which creates the smallest possible surface disturbance, consistent with safety and operational needs.

### **F. EXCLOSURE FENCING (CELLARS & PITS)**

**Exclosure Fencing**

The operator will install and maintain exclosure fencing for all open well cellars to prevent access to public, livestock, and large forms of wildlife before and after drilling operations until the pit is free of fluids and the operator initiates backfilling. (For examples of exclosure fencing design, refer to BLM's Oil and Gas Gold Book, Exclosure Fence Illustrations, Figure 1, Page 18.)

**G. ON LEASE ACCESS ROADS****Road Width**

The access road shall have a driving surface that creates the smallest possible surface disturbance and does not exceed fourteen (14) feet in width. The maximum width of surface disturbance, when constructing the access road, shall not exceed twenty-five (25) feet.

**Surfacing**

Surfacing material is not required on the new access road driving surface. If the operator elects to surface the new access road or pad, the surfacing material may be required to be removed at the time of reclamation.

Where possible, no improvements should be made on the unsurfaced access road other than to remove vegetation as necessary, road irregularities, safety issues, or to fill low areas that may sustain standing water.

The Authorized Officer reserves the right to require surfacing of any portion of the access road at any time deemed necessary. Surfacing may be required in the event the road deteriorates, erodes, road traffic increases, or it is determined to be beneficial for future field development. The surfacing depth and type of material will be determined at the time of notification.

**Crowning**

Crowning shall be done on the access road driving surface. The road crown shall have a grade of approximately 2% (i.e., a 1" crown on a 14' wide road). The road shall conform to Figure 1; cross section and plans for typical road construction.

**Ditching**

Ditching shall be required on both sides of the road.

**Turnouts**

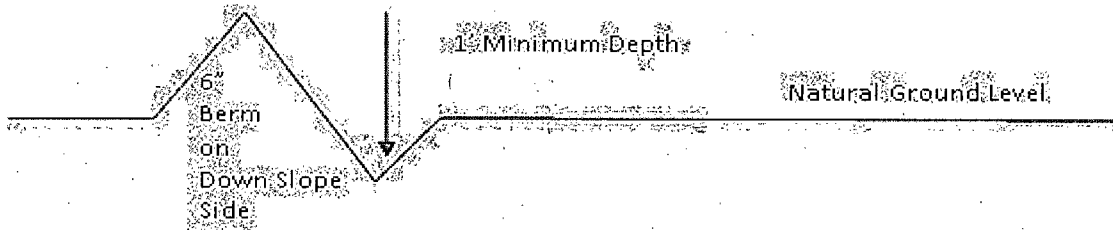
Vehicle turnouts shall be constructed on the road. Turnouts shall be intervisible with interval spacing distance less than 1000 feet. Turnouts shall conform to Figure 1; cross section and plans for typical road construction.

**Drainage**

Drainage control systems shall be constructed on the entire length of road (e.g. ditches, sidehill outslowing and insloping, lead-off ditches, culvert installation, and low water crossings).

A typical lead-off ditch has a minimum depth of 1 foot below and a berm of 6 inches above natural ground level. The berm shall be on the down-slope side of the lead-off ditch.

#### **Cross Section of a Typical Lead-off Ditch**



All lead-off ditches shall be graded to drain water with a 1 percent minimum to 3 percent maximum ditch slope. The spacing interval are variable for lead-off ditches and shall be determined according to the formula for spacing intervals of lead-off ditches, but may be amended depending upon existing soil types and centerline road slope (in %);

#### **Formula for Spacing Interval of Lead-off Ditches**

Example - On a 4% road slope that is 400 feet long, the water flow shall drain water into a lead-off ditch. Spacing interval shall be determined by the following formula:

$$400 \text{ foot road with } 4\% \text{ road slope: } \frac{400'}{4\%} + 100' = 200' \text{ lead-off ditch interval}$$

#### **Cattleguards**

An appropriately sized cattleguard sufficient to carry out the project shall be installed and maintained at fence/road crossings. Any existing cattleguards on the access road route shall be repaired or replaced if they are damaged or have deteriorated beyond practical use. The operator shall be responsible for the condition of the existing cattleguards that are in place and are utilized during lease operations.

#### **Fence Requirement**

Where entry is granted across a fence line, the fence shall be braced and tied off on both sides of the passageway prior to cutting. The operator shall notify the private surface landowner or the grazing allotment holder prior to crossing any fences.

#### **Public Access**

Public access on this road shall not be restricted by the operator without specific written approval granted by the Authorized Officer.

## Construction Steps

1. Salvage topsoil
2. Construct road

3. Redistribute topsoil
4. Revegetate slopes

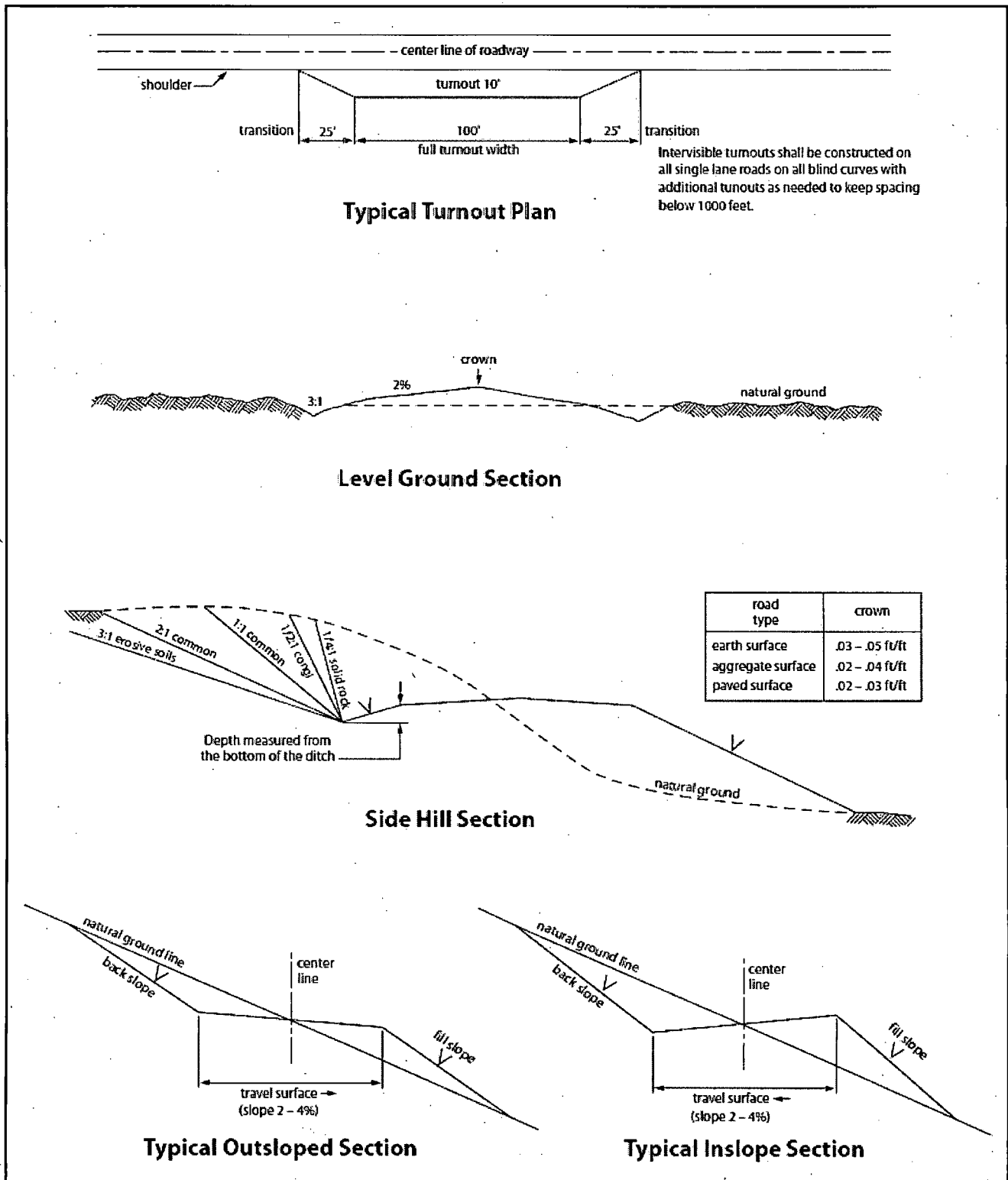


Figure 1. Cross-sections and plans for typical road sections representative of BLM resource or FS local and higher-class roads.

## VII. DRILLING

### A. DRILLING OPERATIONS REQUIREMENTS

The BLM is to be notified in advance for a representative to witness:

- a. Spudding well (minimum of 24 hours)
- b. Setting and/or Cementing of all casing strings (minimum of 4 hours)
- c. BOPE tests (minimum of 4 hours)

☒ **Eddy County**

Call the Carlsbad Field Office, 620 East Greene St., Carlsbad, NM 88220,  
(575) 361-2822

1. **Although there are no measured amounts of Hydrogen Sulfide reported, it is always a potential hazard. If Hydrogen Sulfide is encountered, provide measured values and formations to the BLM.**
2. Unless the production casing has been run and cemented or the well has been properly plugged, the drilling rig shall not be removed from over the hole without prior approval. **If the drilling rig is removed without approval – an Incident of Non-Compliance will be written and will be a “Major” violation.**
3. Floor controls are required for 3M or Greater systems. These controls will be on the rig floor, unobstructed, readily accessible to the driller and will be operational at all times during drilling and/or completion activities. Rig floor is defined as the area immediately around the rotary table; the area immediately above the substructure on which the draw works is located, this does not include the dog house or stairway area.
4. **The record of the drilling rate along with the GR/N well log run from TD to surface (horizontal well – vertical portion of hole) shall be submitted to the BLM office as well as all other logs run on the borehole 30 days from completion. If available, a digital copy of the logs is to be submitted in addition to the paper copies. The Rustler top and top and bottom of Salt are to be recorded on the Completion Report.**

### B. CASING

**Changes to the approved APD casing program need prior approval if the items substituted are of lesser grade or different casing size or are Non-API. The Operator can exchange the components of the proposal with that of superior strength (i.e. changing from J-55 to N-80, or from 36# to 40#). Changes to the approved cement program need prior approval if the altered cement plan has less volume or strength or if the changes are substantial (i.e. Multistage tool, ECP, etc.).**



**The initial wellhead installed on the well will remain on the well with spools used as needed.**

**Centralizers required on surface casing per Onshore Order 2.III.B.1.f.**

**Wait on cement (WOC) time prior to drilling out for a primary cement job will be a minimum 18 hours for a water basin, 24 hours in the potash area, or 500 pounds compressive strength, whichever is greater for all casing strings. DURING THIS WOC TIME, NO DRILL PIPE, ETC. SHALL BE RUN IN THE HOLE. Provide compressive strengths including hours to reach required 500 pounds compressive strength prior to cementing each casing string. IF OPERATOR DOES NOT HAVE THE WELL SPECIFIC CEMENT DETAILS ONSITE PRIOR TO PUMPING THE CEMENT FOR EACH CASING STRING, THE WOC WILL BE 30 HOURS. See individual casing strings for details regarding lead cement slurry requirements.**

**No pea gravel permitted for remedial or fall back remedial without prior authorization from the BLM engineer.**

**Medium Cave/Karst**

**Possible water flows in the Salado and Castile.**

**Possible lost circulation in the Red Beds, Rustler, and Delaware.**

**Abnormal pressure may be encountered within the 3<sup>rd</sup> Bone Spring Sandstone and Wolfcamp formation.**

- 1. The 13-3/8 inch surface casing shall be set at approximately 450 feet (a minimum of 25 feet into the Rustler Anhydrite and above the salt) and cemented to the surface. If salt is encountered, set casing at least 25 feet above the salt.**
  - a. If cement does not circulate to the surface, the appropriate BLM office shall be notified and a temperature survey utilizing an electronic type temperature survey with surface log readout will be used or a cement bond log shall be run to verify the top of the cement. Temperature survey will be run a minimum of six hours after pumping cement and ideally between 8-10 hours after completing the cement job.**
  - b. Wait on cement (WOC) time for a primary cement job is to include the lead cement slurry.**
  - c. Wait on cement (WOC) time for a remedial job will be a minimum of 4 hours after bringing cement to surface or 500 pounds compressive strength, whichever is greater.**
  - d. If cement falls back, remedial cementing will be done prior to drilling out that string.**

2. The minimum required fill of cement behind the 9-5/8 inch intermediate casing is:

- ☒ Cement to surface. If cement does not circulate see B.1.a, c-d above. **Wait on cement (WOC) time for a primary cement job is to include the lead cement slurry due to cave/karst or potash.**

**Formation below the 9-5/8" shoe to be tested according to Onshore Order 2.III.B.1.i. Test to be done as a mud equivalency test using the mud weight necessary for the pore pressure of the formation below the shoe (not the mud weight required to prevent dissolving the salt formation) and the mud weight for the bottom of the hole. Report results to BLM office.**

**Centralizers required through the curve and a minimum of one every other joint.**

3. The minimum required fill of cement behind the 7 inch production casing is:

- ☒ Cement should tie-back at least 200 feet into previous casing string. Operator shall provide method of verification. **Excess calculates to 10% - Additional cement may be required.**

**Formation below the 7" shoe to be tested according to Onshore Order 2.III.B.1.i. Test to be done as a mud equivalency test using the mud weight necessary for the pore pressure of the formation below the shoe and the mud weight for the bottom of the hole. Report results to BLM office.**

4. Cement not required on the 4-1/2" casing. **Packer system being used.**

5. If hardband drill pipe is rotated inside casing, returns will be monitored for metal. If metal is found in samples, drill pipe will be pulled and rubber protectors which have a larger diameter than the tool joints of the drill pipe will be installed prior to continuing drilling operations.

## **C. PRESSURE CONTROL**

1. All blowout preventer (BOP) and related equipment (BOPE) shall comply with well control requirements as described in Onshore Oil and Gas Order No. 2 and API RP 53 Sec. 17.
2. Minimum working pressure of the blowout preventer (BOP) and related equipment (BOPE) required for drilling below the surface casing shoe shall be **2000 (2M) psi.**
  - a. **For surface casing only:** If the BOP/BOPE is to be tested against casing, the wait on cement (WOC) time for that casing is to be met (see WOC statement at start of casing section). Independent service company required.

3. Minimum working pressure of the blowout preventer (BOP) and related equipment (BOPE) required for drilling below the 9-5/8 intermediate casing shoe shall be **5000 (5M) psi. 5M system requires an HCR valve, remote kill line and annular to match. The remote kill line is to be installed prior to testing the system and tested to stack pressure.**
4. The appropriate BLM office shall be notified a minimum of 4 hours in advance for a representative to witness the tests.
  - a. In a water basin, for all casing strings utilizing slips, these are to be set as soon as the crew and rig are ready and any fallback cement remediation has been done. The casing cut-off and BOP installation can be initiated four hours after installing the slips, which will be approximately six hours after bumping the plug. For those casing strings not using slips, the minimum wait time before cut-off is eight hours after bumping the plug. BOP/BOPE testing can begin after cut-off or once cement reaches 500 psi compressive strength (including lead when specified), whichever is greater. However, if the float does not hold, cut-off cannot be initiated until cement reaches 500 psi compressive strength (including lead when specified).
  - b. The tests shall be done by an independent service company utilizing a test plug **not a cup or J-packer**. The operator also has the option of utilizing an independent tester to test without a plug (i.e. against the casing) pursuant to Onshore Order 2 with the pressure not to exceed 70% of the burst rating for the casing. Any test against the casing must meet the WOC time for water basin (18 hours) or potash (24 hours) or 500 pounds compressive strength, whichever is greater, prior to initiating the test (see casing segment as lead cement may be critical item).
  - c. The test shall be run on a 5000 psi chart for a 2-3M BOP/BOP, on a 10000 psi chart for a 5M BOP/BOPE and on a 15000 psi chart for a 10M BOP/BOPE. If a linear chart is used, it shall be a one hour chart. A circular chart shall have a maximum 2 hour clock. If a twelve hour or twenty-four hour chart is used, tester shall make a notation that it is run with a two hour clock.
  - d. The results of the test shall be reported to the appropriate BLM office.
  - e. All tests are required to be recorded on a calibrated test chart. **A copy of the BOP/BOPE test chart and a copy of independent service company test will be submitted to the appropriate BLM office.**
  - f. The BOP/BOPE test shall include a low pressure test from 250 to 300 psi. The test will be held for a minimum of 10 minutes if test is done with a test plug and 30 minutes without a test plug. This test shall be performed prior to the test at full stack pressure.

**D. DRILL STEM TEST**

If drill stem tests are performed, Onshore Order 2.III.D shall be followed.

**E. WASTE MATERIAL AND FLUIDS**

All waste (i.e. drilling fluids, trash, salts, chemicals, sewage, gray water, etc.) created as a result of drilling operations and completion operations shall be safely contained and disposed of properly at a waste disposal facility. No waste material or fluid shall be disposed of on the well location or surrounding area.

Porto-johns and trash containers will be on-location during fracturing operations or any other crew-intensive operations.

**JAM 112414**

## **VIII. PRODUCTION (POST DRILLING)**

### **A. WELL STRUCTURES & FACILITIES**

#### **Placement of Production Facilities**

Production facilities should be placed on the well pad to allow for maximum interim recontouring and revegetation of the well location.

#### **Exclosure Netting (Open-top Tanks)**

Immediately following active drilling or completion operations, the operator will take actions necessary to prevent wildlife and livestock access, including avian wildlife, to all open-topped tanks that contain or have the potential to contain salinity sufficient to cause harm to wildlife or livestock, hydrocarbons, or Resource Conservation and Recovery Act of 1976-exempt hazardous substances. At a minimum, the operator will net, screen, or cover open-topped tanks to exclude wildlife and livestock and prevent mortality. If the operator uses netting, the operator will cover and secure the open portion of the tank to prevent wildlife entry. The operator will net, screen, or cover the tanks until the operator removes the tanks from the location or the tanks no longer contain substances that could be harmful to wildlife or livestock. Use a maximum netting mesh size of 1 ½ inches. The netting must not be in contact with fluids and must not have holes or gaps.

#### **Chemical and Fuel Secondary Containment and Exclosure Screening**

The operator will prevent all hazardous, poisonous, flammable, and toxic substances from coming into contact with soil and water. At a minimum, the operator will install and maintain an impervious secondary containment system for any tank or barrel containing hazardous, poisonous, flammable, or toxic substances sufficient to contain the contents of the tank or barrel and any drips, leaks, and anticipated precipitation. The operator will dispose of fluids within the containment system that do not meet applicable state or U. S. Environmental Protection Agency livestock water standards in accordance with state law; the operator must not drain the fluids to the soil or ground. The operator will design, construct, and maintain all secondary containment systems to prevent wildlife and livestock exposure to harmful substances. At a minimum, the operator will install effective wildlife and livestock exclosure systems such as fencing, netting, expanded metal mesh, lids, and grate covers. Use a maximum netting mesh size of 1 ½ inches.

#### **Open-Vent Exhaust Stack Exclosures**

The operator will construct, modify, equip, and maintain all open-vent exhaust stacks on production equipment to prevent birds and bats from entering, and to discourage perching, roosting, and nesting. (*Recommended exclosure structures on open-vent exhaust stacks are in the shape of a cone.*) Production equipment includes, but may not be limited to, tanks, heater-treaters, separators, dehydrators, flare stacks, in-line units, and compressor mufflers.

#### **Containment Structures**

Proposed production facilities such as storage tanks and other vessels will have a secondary containment structure that is constructed to hold the capacity of 1.5 times the

largest tank, plus freeboard to account for precipitation, unless more stringent protective requirements are deemed necessary.

#### **Painting Requirement**

All above-ground structures including meter housing that are not subject to safety requirements shall be painted a flat non-reflective paint color, **Shale Green** from the BLM Standard Environmental Color Chart (CC-001: June 2008).

### **IX. INTERIM RECLAMATION**

During the life of the development, all disturbed areas not needed for active support of production operations should undergo interim reclamation in order to minimize the environmental impacts of development on other resources and uses.

Within six (6) months of well completion, operators should work with BLM surface management specialists (Jim Amos: 575-234-5909) to devise the best strategies to reduce the size of the location. Interim reclamation should allow for remedial well operations, as well as safe and efficient removal of oil and gas.

During reclamation, the removal of caliche is important to increasing the success of revegetating the site. Removed caliche that is free of contaminants may be used for road repairs, fire walls or for building other roads and locations. In order to operate the well or complete workover operations, it may be necessary to drive, park and operate on restored interim vegetation within the previously disturbed area. Disturbing revegetated areas for production or workover operations will be allowed. If there is significant disturbance and loss of vegetation, the area will need to be revegetated. Communicate with the appropriate BLM office for any exceptions/exemptions if needed.

All disturbed areas after they have been satisfactorily prepared need to be reseeded with the seed mixture provided below.

Upon completion of interim reclamation, the operator shall submit a Sundry Notices and Reports on Wells, Subsequent Report of Reclamation (Form 3160-5).

### **X. FINAL ABANDONMENT & RECLAMATION**

At final abandonment, well locations, production facilities, and access roads must undergo "final" reclamation so that the character and productivity of the land are restored.

Earthwork for final reclamation must be completed within six (6) months of well plugging. All pads, pits, facility locations and roads must be reclaimed to a satisfactory revegetated, safe, and stable condition, unless an agreement is made with the landowner or BLM to keep the road and/or pad intact.

After all disturbed areas have been satisfactorily prepared, these areas need to be revegetated with the seed mixture provided below. Seeding should be accomplished by drilling on the contour whenever practical or by other approved methods. Seeding may need to be repeated until revegetation is successful, as determined by the BLM.

Operators shall contact a BLM surface protection specialist prior to surface abandonment operations for site specific objectives (Jim Amos: 575-234-5909).



## Seed Mixture 1, for Loamy Sites

The holder shall seed all disturbed areas with the seed mixture listed below. The seed mixture shall be planted in the amounts specified in pounds of pure live seed (PLS)\* per acre. There shall be no primary or secondary noxious weeds in the seed mixture. Seed will be tested and the viability testing of seed will be done in accordance with State law(s) and within nine (9) months prior to purchase. Commercial seed will be either certified or registered seed. The seed container will be tagged in accordance with State law(s) and available for inspection by the authorized officer.

Seed will be planted using a drill equipped with a depth regulator to ensure proper depth regulator to ensure proper depth of planting where drilling is possible. The seed mixture will be evenly and uniformly planted over the disturbed area (small/heavier seeds have a tendency to drop the bottom of the drill and are planted first). The holder shall take appropriate measures to ensure this does not occur. Where drilling is not possible, seed will be broadcast and the area shall be raked or chained to cover the seed. When broadcasting the seed, the pounds per acre are to be doubled. The seeding will be repeated until a satisfactory stand is established as determined by the authorized officer. Evaluation of growth will not be made before completion of at least one full growing season after seeding.

Species to be planted in pounds of pure live seed\* per acre:

### Species

lb/acre

Plains lovegrass ( <i>Eragrostis intermedia</i> )	0.5
Sand dropseed ( <i>Sporobolus cryptandrus</i> )	1.0
Sideoats grama ( <i>Bouteloua curtipendula</i> )	5.0
Plains bristlegrass ( <i>Setaria macrostachya</i> )	2.0

\*Pounds of pure live seed:

Pounds of seed x percent purity x percent germination = pounds pure live seed