

District I
1625 N. French Dr., Hobbs, NM 88240
Phone: (575) 393-6161 Fax: (575) 393-0720

District II
811 S. First St., Artesia, NM 88210
Phone: (575) 748-1283 Fax: (575) 748-9720

District III
1000 Rio Brazos Road, Aztec, NM 87410
Phone: (505) 334-6178 Fax: (505) 334-6178

District IV
1220 S. St. Francis Dr., Santa Fe, NM 87505
Phone: (505) 476-3460 Fax: (505) 476-3462

State of New Mexico
Energy Minerals and Natural Resources
Oil Conservation Division
1220 South St. Francis Dr.
Santa Fe, NM 87505

Form C-101
Revised July 18, 2013

APPLICATION FOR PERMIT TO DRILL, RE-ENTER, DEEPEN, PLUGBACK, OR ADD A ZONE

¹ Operator Name and Address COG Operating LLC 2208 West Main Street Artesia, NM 88210		² OGRID Number 229137
³ Property Code 308043		⁴ API Number 30-015-42880
⁵ Property Name CCAP STATE COM		⁶ Well No 6H

⁷ Surface Location

UL - Lot	Section	Township	Range	Lot Idn	Feet from	N/S Line	Feet From	E/W Line	County
H	16	22S	27E		1650'	North	330'	East	Eddy

⁸ Proposed Bottom Hole Location

UL - Lot	Section	Township	Range	Lot Idn	Feet from	N/S Line	Feet From	E/W Line	County
E	16	22S	27E		1980'	North	330'	West	Eddy

⁹ Pool Information

Pool Name	Pool Code
Wildcat; Bone Spring	96403

Additional Well Information

¹¹ Work Type New Well	¹² Well Type Oil	¹³ Cable/Rotary	¹⁴ Lease Type State	¹⁵ Ground Level Elevation 2102.0'
¹⁶ Multiple N	¹⁷ Proposed Depth 13141'	¹⁸ Formation Bone Spring	¹⁹ Contractor	²⁰ Spud Date 12/31/2014
Depth to Ground water		Distance from nearest fresh water well		Distance to nearest surface water

☒ We will be using a closed-loop system in lieu of lined pits

²¹ Proposed Casing and Cement Program

Type	Hole Size	Casing Size	Casing Weight/ft	Setting Depth	Sacks of Cement	Estimated TOC
Surface	17.5	13.375	48	230'	325	0
Intemd	12.25	9.625	40	1905'	675	0
Production	8.75	7.0	26	8229'	1025	0
Production	8.75	5.5	17	8229' - 9054'	250	0
Production	7.875	5.5	17	9054' - 13141'	1500	0

Casing/Cement Program: Additional Comments

Drill 17-1/2" hole to 230' with Fresh Water. Run 13-3/8", 48#, H-40 csg and cement to surface. Drill 12-1/4" hole to 1905' with Brine Water. Run 9-5/8", 40#, J-55 csg and cement to surface. Drill 8-3/4" hole with Fresh Water/Cut Brine to approximately 8229', kick off and drill 8-3/4" hole to end of curve (EOC) at approximately 9054' MD, 8750' TVD. Drill 7-7/8" lateral with Cut Brine to approximately 13141' MD, 8700' TVD. Run 7" X 5 1/2" tapered production casing as follows: 7" 26# P110 LTC casing 0' - 8229' and 5-1/2", 17#, P-110 LTC casing 8229' - 13141' and cement to surface.

²² Proposed Blowout Prevention Program

Type	Working Pressure	Test Pressure	Manufacturer
Double Ram	3000	3000	Cameron

²³ I hereby certify that the information given above is true and complete to the best of my knowledge and belief. I further certify that I have complied with 19.15.14.9 (A) NMAC <input checked="" type="checkbox"/> and/or 19.15.14.9 (B) NMAC <input checked="" type="checkbox"/> if applicable. Signature: <i>Mayte Reyes</i>		OIL CONSERVATION DIVISION	
Printed name: Mayte Reyes		Approved By: <i>[Signature]</i>	
Title: Regulatory Analyst		Title: <i>Dir. R. Sepewski</i>	
E-mail Address: mreyes1@concho.com		Approved Date: 12/23/2014	Expiration Date: 12/23/2014
Date: 12/23/2014	Phone: 575-748-6945	Conditions of Approval Attached	

DISTRICT IV
1820 N. ST. FRANCIS DR., SANTA FE, NM 87505
Phone: (505) 476-3480 Fax: (505) 476-3482

Form C-102
Revised August 1, 2011
Submit one copy to appropriate
District Office

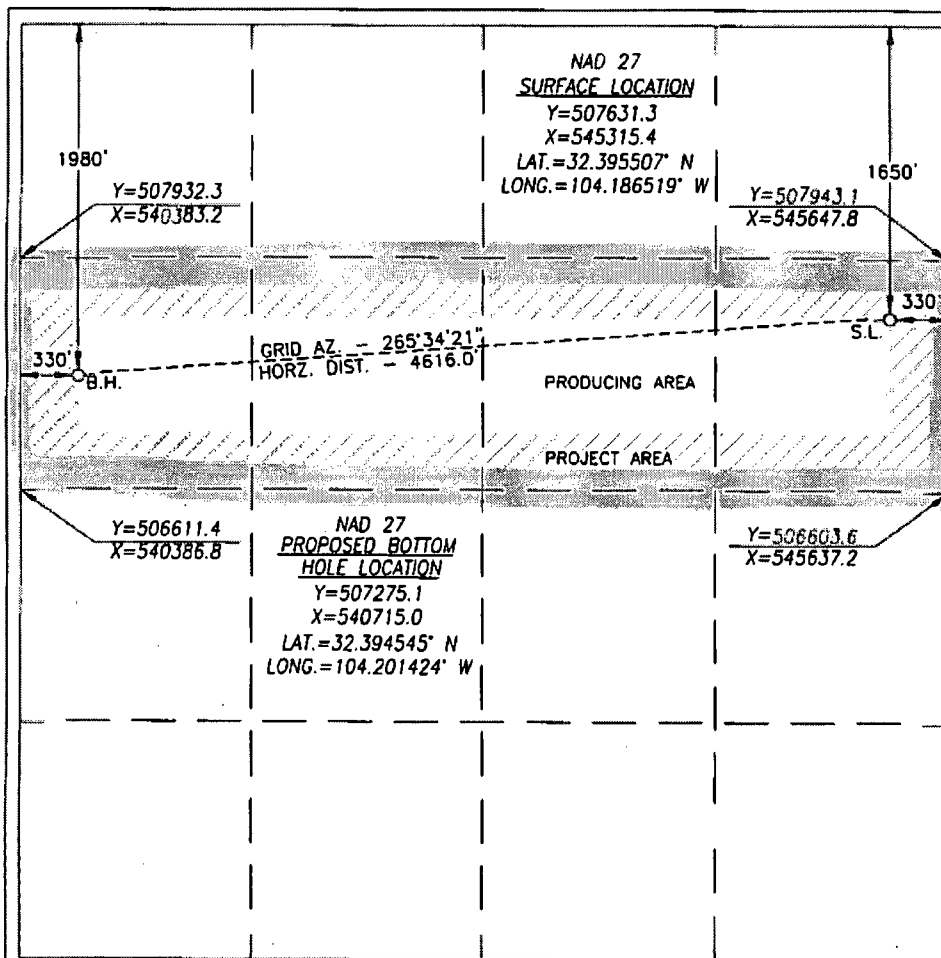
☐ AMENDED REPORT

API Number 30-015- 42880	Pool Code 96403	Pool Name Wildcat; Bone Spring
Property Code 308043	Property Name CCAP ST COM	Well Number 6H
OGRID No. 229137	Operator Name COG OPERATING, LLC	Elevation 3102.0

UL or lot No.	Section	Township	Range	Lot Idn	Feet from the	North/South line	Feet from the	East/West line	County
H	16	22-S	27-E		1650	NORTH	330	EAST	EDDY

UL or lot No.	Section	Township	Range	Lot Idn	Feet from the	North/South line	Feet from the	East/West line	County
E	16	22-S	27-E		1980	NORTH	330	WEST	EDDY

Dedicated Acres	Joint or Infill	Consolidation Code	Order No.
160			



I hereby certify that the information herein is true and complete to the best of my knowledge and belief, and that this organization either owns a working interest or unleased mineral interest in the land including the proposed bottom hole location or has a right to drill this well at this location pursuant to a contract with an owner of such mineral or working interest, or to a voluntary pooling agreement or a compulsory pooling order heretofore entered by the division.

M. J. P. [Signature] 12/23/14
Signature Date

Mayte Reyes

Printed Name

mreyes1@concho.com

E-mail Address

I hereby certify that the well location shown on this plat was plotted from field notes of actual surveys made by me or under my supervision, and that the same is true and correct to the best of my belief.

OCTOBER 23, 2014

Date of Survey

Signature & Seal of Professional Surveyor



Certificate No. CHAD HARCROW 17777
W.O. 14-1030 DRAWN BY: AF

CCAP State Com #6H

	Hole					
	Size	Casing	Wt	Depth	Cmt	TOC
Surface	17.5	13.375	48	0-230'	325	0
Intrmd	12.25	9.625	40	0-1905'	675	0
Prod	8.75	7.0	26	0-8229'	1025	0
Prod	8.75	5.5	17	8229'-9054'	250	0
Prod	7.875	5.5	17	9054'-13141'	1500	0

Drill 17-1/2" hole to 230' with Fresh Water. Run 13-3/8", 48#, H-40 csg and cement to surface. Drill 12-1/4" hole to 1905' with Brine Water. Run 9-5/8", 40#, J-55 csg and cement to surface. Drill 8-3/4" hole with Fresh Water/Cut Brine to approximately 8229', kick off and drill 8-3/4" hole to end of curve (EOC) at approximately 9054' MD, 8750' TVD. Drill 7-7/8" lateral with Cut Brine to approximately 13141' MD, 8700' TVD. Run 7" X 5 1/2" tapered production casing as follows: 7" 26# P110 LTC casing 0'-8229' and 5-1/2", 17#, P-110 LTC casing 8229'-13141' and cement to surface.

Well Control

Type	Pressure	Test	Manufacture
Double Ram	3000	3000	Cameron