

# NM OIL CONSERVATION

ARTESIA DISTRICT

FEB 06 2015

## DISTRICT I

1625 N. FRENCH DR., HOHBS, NM 88240

## DISTRICT II

1301 W. GRAND AVENUE, ARTESIA, NM 88210

## DISTRICT III

1000 RIO BRAZOS RD., AZTEC, NM 87410

## DISTRICT IV

11885 S. ST. FRANCIS DR., SANTA FE, NM 87505

State of New Mexico  
Energy, Minerals and Natural Resources Department

RECEIVED

## OIL CONSERVATION DIVISION

11885 SOUTH ST. FRANCIS DR.  
Santa Fe, New Mexico 87505

Form C-102

Revised October 12, 2005

Submit to Appropriate District Office

State Lease - 4 Copies

Fee Lease - 3 Copies

## WELL LOCATION AND ACREAGE DEDICATION PLAT

☐ AMENDED REPORT

API Number 30-015-42939	Pool Code 97558	Pool Name GJ; 7RVS-QN-GB-Glorieta, Yeso
Property Code 302497	Property Name GJ WEST COOP UNIT	Well Number 302
OGRID No. 229137	Operator Name COG OPERATING, LLC	Elevation 3602'

### Surface Location

UL or lot No.	Section	Township	Range	Lot Idn	Feet from the	North/South line	Feet from the	East/West line	County
D	21	17-S	29-E		330	NORTH	330	WEST	EDDY

### Bottom Hole Location If Different From Surface

UL or lot No.	Section	Township	Range	Lot Idn	Feet from the	North/South line	Feet from the	East/West line	County
Dedicated Acrea	Joint or Infill	Consolidation Code	Order No.						
40									

NO ALLOWABLE WILL BE ASSIGNED TO THIS COMPLETION UNTIL ALL INTERESTS HAVE BEEN CONSOLIDATED  
OR A NON-STANDARD UNIT HAS BEEN APPROVED BY THE DIVISION

	<p>GEODETIC COORDINATES NAD 27 NME</p> <p>Y=664401.2 N X=575729.6 E</p> <p>LAT.=32.826283° N LONG.=104.086804° W</p>
<p>Accepted for Record RD 2/11/2015</p>	

### OPERATOR CERTIFICATION

I hereby certify that the information herein is true and complete to the best of my knowledge and belief, and that this organization either owns a working interest or unleased mineral interest in the land including the proposed bottom hole location or has a right to drill this well at this location pursuant to a contract with an owner of such mineral or working interest, or to a voluntary pooling agreement or a compulsory pooling order heretofore entered by the division.

2-5-15  
Date

Kelly J. Holly  
Printed Name

### SURVEYOR CERTIFICATION

I hereby certify that the well location shown on this plat was plotted from field notes of actual surveys made by me or under my supervision, and that the same is true and correct to the best of my belief.

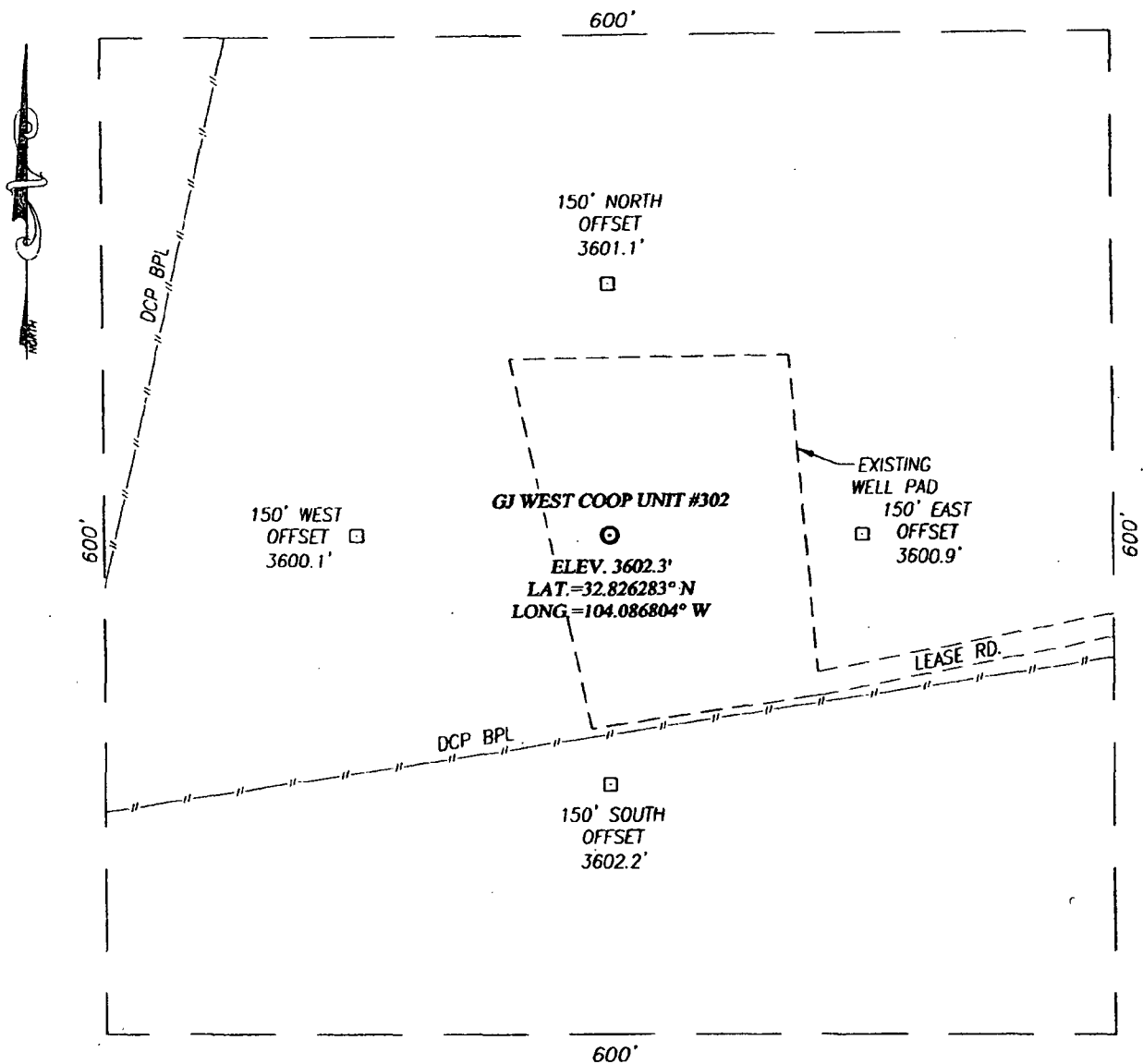
JANUARY 18, 2010

Date Surveyed: DSS  
Signature & Seal of Professional Surveyor

09.11.1256

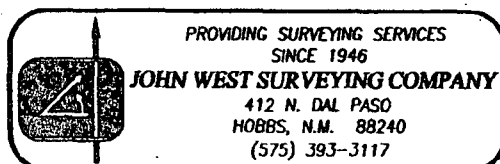
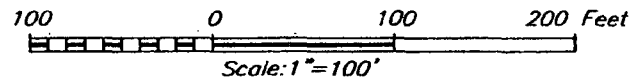
Certificate No. GARY G. EIDSON 12841  
RONALD J. EIDSON 3239

**SECTION 21, TOWNSHIP 17 SOUTH, RANGE 29 EAST, N.M.P.M.**  
 EDDY COUNTY NEW MEXICO



**DIRECTIONS TO LOCATION**

FROM THE INTERSECTION OF U.S. HWY. #82 AND CO. RD. #212 (VALLEY GAS RD.), GO NORTHWEST ON LEASE RD. APPROX. 0.4 MILES. VEER RIGHT AND GO NORTH APPROX. 0.2 MILES. TURN LEFT AND GO WEST APPROX. 0.2 MILES. TURN RIGHT AND GO NORTH APPROX. 0.1 MILE. TURN LEFT AND GO WEST APPROX. 200 FEET TO AN EXISTING EMPTY WELL PAD AND THIS LOCATION.

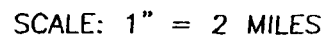


**COG OPERATING, LLC**

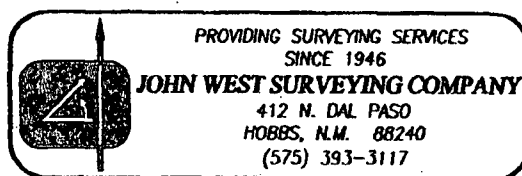
GJ WEST COOP UNIT #302 WELL  
 LOCATED 330 FEET FROM THE NORTH LINE  
 AND 330 FEET FROM THE WEST LINE OF SECTION 21,  
 TOWNSHIP 17 SOUTH, RANGE 29 EAST, N.M.P.M.,  
 EDDY COUNTY, NEW MEXICO

Survey Date: 01/18/10	Sheet 1 of 1 Sheets
W.O. Number: 09.11.1256	Dr By: DSS
Date: 01/20/10	09111256
	Scale: 1"=100'

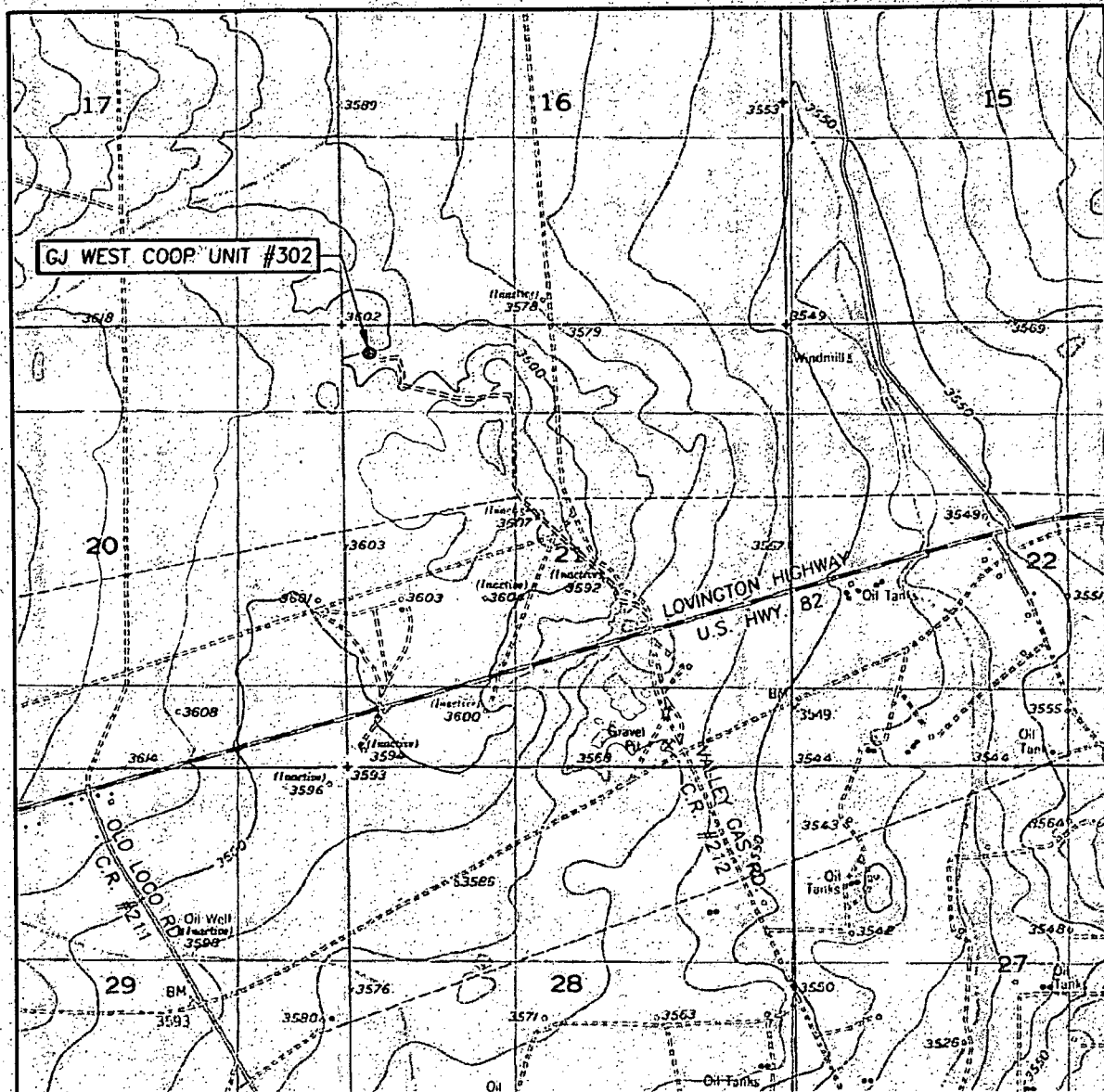
NORTH



LEASE GJ WEST COOP UNIT



# LOCATION VERIFICATION MAP



SCALE: 1" = 2000'

CONTOUR INTERVAL:  
RED LAKE SE, N.M. - 10'

SEC. 21 TWP. 17-S RGE. 29-E

SURVEY N.M.P.M.

COUNTY EDDY STATE NEW MEXICO

DESCRIPTION 330' FNL. & 330' FWL

ELEVATION 3602'

OPERATOR COG OPERATING, INC.

LEASE GJ WEST COOP UNIT

U.S.G.S. TOPOGRAPHIC MAP  
RED LAKE SE, N.M.

