

NM OIL CONSERVATION

ARTESIA DISTRICT

NMOC D

FEB 13 2015

Form 3160-3
(March 2012)

FORM APPROVED
OMB No. 1004-0137
Expires October 31, 2014

UNITED STATES
DEPARTMENT OF THE INTERIOR
BUREAU OF LAND MANAGEMENT

RECEIVED

APPLICATION FOR PERMIT TO DRILL OR REENTER

5. Lease Serial No.
NMNM-121950

6. If Indian, Allottee or Tribe Name

7. If Unit or CA Agreement, Name and No.

8. Lease Name and Well No.
Waterloo Federal #4 <314 204>

9. API Well No.
30-005-64228

10. Field and Pool, or Exploratory
Round Tank; San Andres

11. Sec., T. R. M. or Blk. and Survey or Area

Sec. 20 T15S R29E

12. County or Parish

Chaves

13. State

NM

1a. Type of work: ☒ DRILL ☐ REENTER

1b. Type of Well: ☒ Oil Well ☐ Gas Well ☐ Other ☒ Single Zone ☐ Multiple Zone

2. Name of Operator
Mack Energy Corporation

3a. Address
PO Box 960 Artesia, NM 88211-0960

3b. Phone No. (include area code)
(575)748-1288

4. Location of Well (Report location clearly and in accordance with any State requirements. *)

At surface 2310 FNL & 1650 FWL

At proposed prod. zone 2310 FNL & 1650 FWL

14. Distance in miles and direction from nearest town or post office*

12 miles northwest of Loco Hills, NM

15. Distance from proposed*
location to nearest
property or lease line, ft.
(Also to nearest drlg. unit line, if any) 330'

16. No. of acres in lease

240

17. Spacing Unit dedicated to this well

40

18. Distance from proposed location*
to nearest well, drilling, completed,
applied for, on this lease, ft. 1320'

19. Proposed Depth

3500'

20. BLM/BIA Bond No. on file

NMB000286

21. Elevations (Show whether DF, KDB, RT, GL, etc.)

3758.5'

22. Approximate date work will start*

11/1/2014

23. Estimated duration

7 days

24. Attachments

ROSWELL CONTROLLED WATER BASIN

The following, completed in accordance with the requirements of Onshore Oil and Gas Order No. 1, must be attached to this form:

1. Well plat certified by a registered surveyor.
2. A Drilling Plan.
3. A Surface Use Plan (if the location is on National Forest System Lands, the SUPO must be filed with the appropriate Forest Service Office).

4. Bond to cover the operations unless covered by an existing bond on file (see Item 20 above).
5. Operator certification
6. Such other site specific information and/or plans as may be required by the BLM.

25. Signature

Jerry W. Sherrell

Name (Printed/Typed)

Jerry W. Sherrell

Date

8-25-2014

Title

Production Clerk

Approved by (Signature)

/s/ Al Collar

Name (Printed/Typed)

/s/ Al Collar

Date

FEB 13 2015

Title

Assistant Field Manager,

Office

Roswell Field Office

APPROVED FOR 2 YEARS

Application approval does not warrant or certify that the applicant holds legal or equitable title to those rights in the subject lease which would entitle the applicant to conduct operations thereon.

Conditions of approval, if any, are attached.

Title 18 U.S.C. Section 1001 and Title 4 States any false, fictitious or fraudulent statement.

(Continued on page 2)

Must be in compliance with NMOC Rule 5.9 prior to transporting/selling product.

and willfully to make to any department or agency of the United States

*(Instructions on page 2)

Accepted for record
NMOC D 4/8/15

DECLARED WATER BASIN

CLAMANT BEHIND THE
CASING MUST BE

CIRCULATED

WITNESS

APPROVAL SUBJECT TO
GENERAL REQUIREMENTS AND
SPECIAL STIPULATIONS ATTACHED

District I
1625 N. French Dr., Hobbs, NM 88240
Phone: (575) 393-6161 Fax: (575) 393-0720
District II
311 S. First St., Artesia, NM 88210
Phone: (575) 748-1283 Fax: (575) 748-9720
District III
1000 Rio Brazos Road, Aztec, NM 87410
Phone: (505) 334-6178 Fax: (505) 334-6170
District IV
1220 S. St. Francis Dr., Santa Fe, NM 87505
Phone: (505) 476-3460 Fax: (505) 476-3462

State of New Mexico
Energy, Minerals & Natural Resources Department
OIL CONSERVATION DIVISION
1220 South St. Francis Dr.
Santa Fe, NM 87505

NM OIL CONSERVATION

ARTESIA DISTRICT

Form C-102

FEB 17 2015

Revised August 1, 2011

Submit one copy to appropriate

District Office

RECEIVED

☐ AMENDED REPORT

WELL LOCATION AND ACREAGE DEDICATION PLAT

¹ API Number 30-005-64228	² Pool Code 52770	³ Pool Name Round Tank; San Andres
⁴ Property Code 314204	⁵ Property Name WATERLOO FEDERAL	
⁷ OGRID No. 13837	⁸ Operator Name MACK ENERGY CORPORATION	
		⁶ Well Number 4
		⁹ Elevation 3758.5

¹⁰ Surface Location

UL or lot no.	Section	Township	Range	Lot Idn	Feet from the	North/South line	Feet from the	East/West line	County
F	20	15 S	29 E		2310	NORTH	1650	WEST	CHAVES

¹¹ Bottom Hole Location If Different From Surface

UL or lot no.	Section	Township	Range	Lot Idn	Feet from the	North/South line	Feet from the	East/West line	County
¹² Dedicated Acres 40		¹³ Joint or Infill		¹⁴ Consolidation Code		¹⁵ Order No.			

No allowable will be assigned to this completion until all interests have been consolidated or a non-standard unit has been approved by the division.

N89°53'47"E 2637.31 FT			N89°52'35"E 2634.03 FT		
NW CORNER SEC. 20 LAT. = 33.0086773°N LONG. = 104.0592070°W NMSP EAST (FT) N = 730802.99 E = 625370.10	N/4 CORNER SEC. 20 LAT. = 33.0086712°N LONG. = 104.0506060°W NMSP EAST (FT) N = 730807.76 E = 628006.72	NE CORNER SEC. 20 LAT. = 33.0086670°N LONG. = 104.0420158°W NMSP EAST (FT) N = 730813.44 E = 630640.06			
WATERLOO FEDERAL #4 ELEV. = 3758.5' LAT. = 33.0023260°N (NAD83) LONG. = 104.0538431°W NMSP EAST (FT) N = 728496.55 E = 627020.55					
SURFACE LOCATION					
W/4 CORNER SEC. 20 LAT. = 33.0014276°N LONG. = 104.0592265°W NMSP EAST (FT) N = 728165.36 E = 625371.02		E/4 CORNER SEC. 20 LAT. = 33.0014268°N LONG. = 104.0422246°W NMSP EAST (FT) N = 728179.05 E = 630583.33			
NOTE: LATITUDE AND LONGITUDE COORDINATES ARE SHOWN USING THE NORTH AMERICAN DATUM OF 1983 (NAD83). LISTED NEW MEXICO STATE PLANE EAST COORDINATES ARE GRID (NAD83). BASIS OF BEARING AND DISTANCES USED ARE NEW MEXICO STATE PLANE EAST COORDINATES MODIFIED TO THE SURFACE.					
SW CORNER SEC. 20 LAT. = 32.9941778°N LONG. = 104.0592205°W NMSP EAST (FT) N = 725527.69 E = 625379.72	S/4 CORNER SEC. 20 LAT. = 32.9941805°N LONG. = 104.0506126°W NMSP EAST (FT) N = 725535.63 E = 628018.88	SE CORNER SEC. 20 LAT. = 32.9941741°N LONG. = 104.0419921°W NMSP EAST (FT) N = 725540.51 E = 630661.92			
S89°49'39"W 2639.85 FT			S89°53'39"W 2643.73 FT		

¹⁷ OPERATOR CERTIFICATION

I hereby certify that the information contained herein is true and complete to the best of my knowledge and belief, and that this organization either owns a working interest or unleased mineral interest in the land including the proposed bottom hole location or has a right to drill this well at this location pursuant to a contract with an owner of such a mineral or working interest, or to a voluntary pooling agreement or a compulsory pooling order heretofore entered by the division.

Jerry W. Sherrell 8-25-14
Signature Date

Jerry W. Sherrell
Printed Name

jerry@mec.com
E-mail Address

¹⁸ SURVEYOR CERTIFICATION

I hereby certify that the well location shown on this plat was plotted from field notes of actual surveys made by me or under my supervision, and that the same is true and correct to the best of my belief.

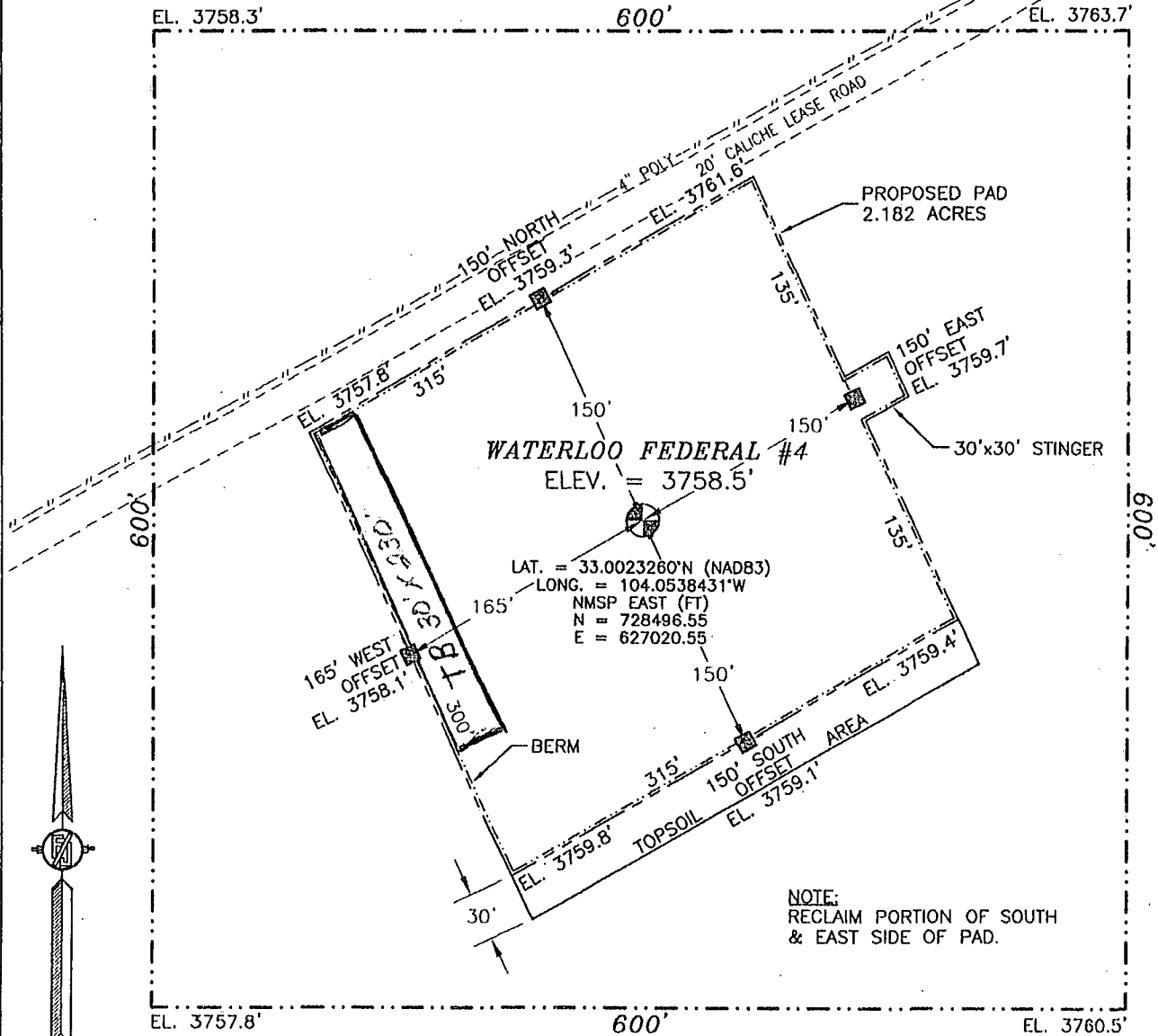
MAY 1 2014
Date of Survey

[Signature]
Signature and Seal of Professional Surveyor

Certificate Number: PLIMON E. JARAMILLO, PLS 12797
SURVEY NO. 3885

SECTION 20, TOWNSHIP 15 SOUTH, RANGE 29 EAST, N.M.P.M.
CHAVES COUNTY, STATE OF NEW MEXICO
SITE MAP

NOTE: LATITUDE AND LONGITUDE COORDINATES ARE SHOWN USING THE NORTH AMERICAN DATUM OF 1983 (NAD83). LISTED NEW MEXICO STATE PLANE EAST COORDINATES ARE GRID (NAD83). BASIS OF BEARING AND DISTANCES USED ARE NEW MEXICO STATE PLANE EAST COORDINATES MODIFIED TO THE SURFACE



0 10 50 100 200
SCALE 1" = 100'

DIRECTIONS TO LOCATION

FROM THE INTERSECTION OF STATE HIGHWAY 249 AND CR 30 (JEMINA) GO NORTHWEST ON STATE HIGHWAY 249 FOR APPROX. 2.1 MILES. GO SOUTH ON CALICHE LEASE ROAD FOR APPROX. 4.4 MILES. GO SOUTHEAST APPROX. 0.5 OF A MILE. GO SOUTHWEST APPROX. 0.2 OF A MILE. LOCATION IS APPROX. 150' SOUTH.

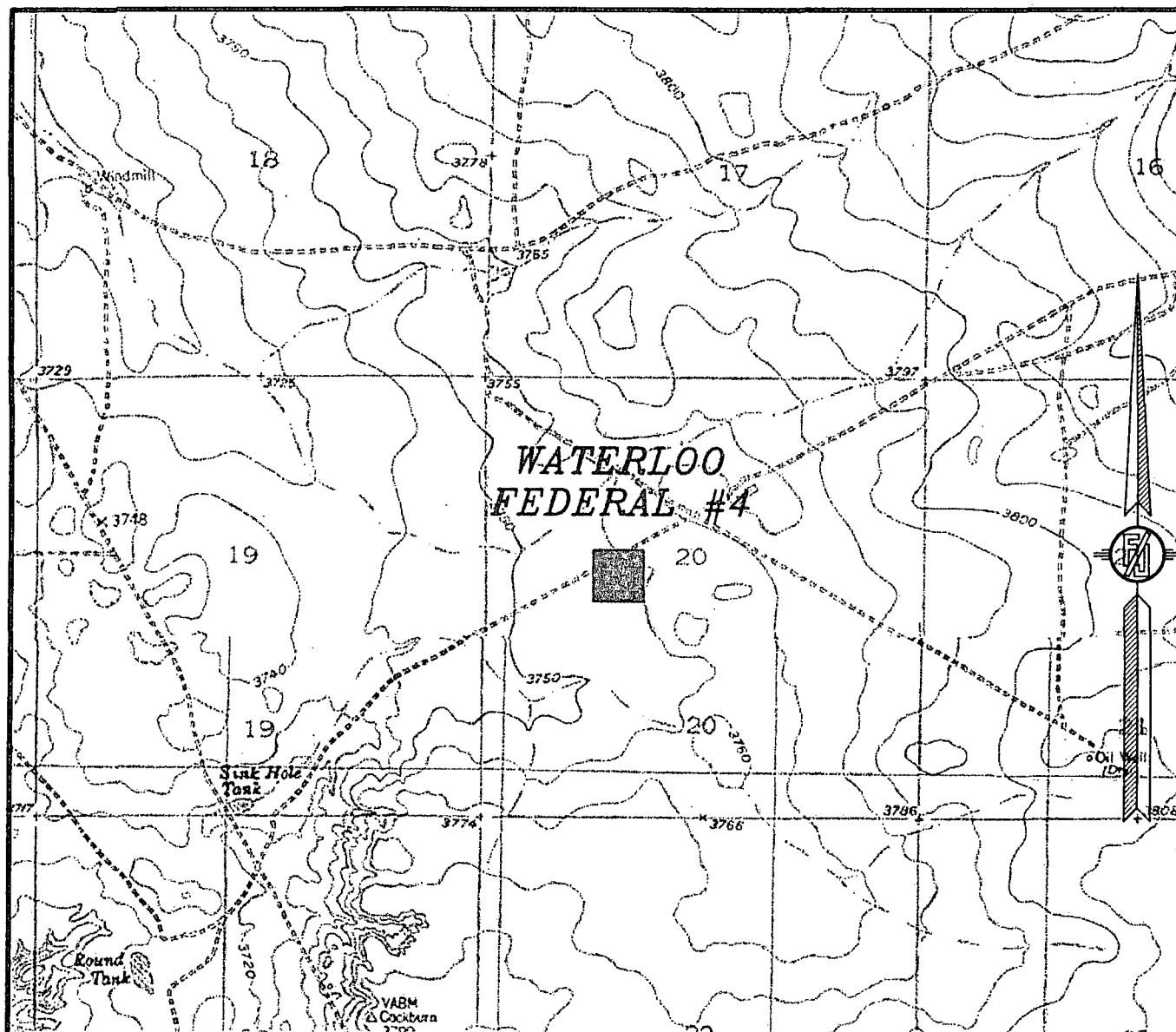
MACK ENERGY CORPORATION
WATERLOO FEDERAL #4
LOCATED 2310 FT. FROM THE NORTH LINE
AND 1650 FT. FROM THE WEST LINE OF
SECTION 20, TOWNSHIP 15 SOUTH,
RANGE 29 EAST, N.M.P.M.
CHAVES COUNTY, STATE OF NEW MEXICO

MAY 1, 2014

SURVEY NO. 2885

MADRON SURVEYING, INC. 301 SOUTH CANAL (575) 234-3341 CARLSBAD, NEW MEXICO

SECTION 20, TOWNSHIP 15 SOUTH, RANGE 29 EAST, N.M.P.M.
CHAVES COUNTY, STATE OF NEW MEXICO
LOCATION VERIFICATION MAP



USGS QUAD MAP:
KING CAMP & BASIN
WELL

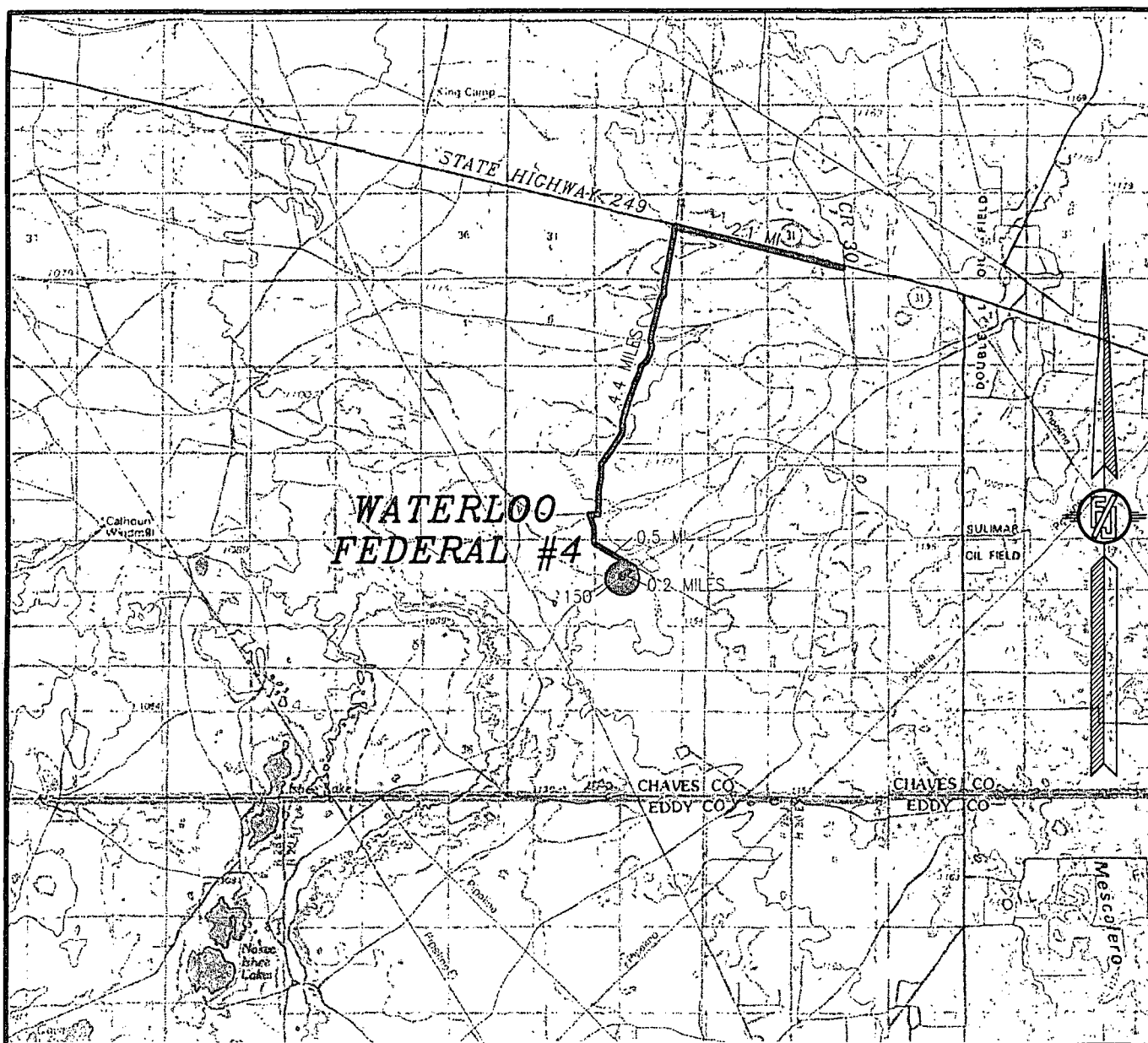
NOT TO SCALE

MACK ENERGY CORPORATION
WATERLOO FEDERAL #4
LOCATED 2310 FT. FROM THE NORTH LINE
AND 1650 FT. FROM THE WEST LINE OF
SECTION 20, TOWNSHIP 15 SOUTH,
RANGE 29 EAST, N.M.P.M.
CHAVES COUNTY, STATE OF NEW MEXICO

MAY 1, 2014

MADRON SURVEYING, INC. 301 SOUTH CANAL (575) 234-3341 CARLSBAD, NEW MEXICO SURVEY NO. 2885

SECTION 20, TOWNSHIP 15 SOUTH, RANGE 29 EAST, N.M.P.M.
CHAVES COUNTY, STATE OF NEW MEXICO
VICINITY MAP



DISTANCES IN MILES

NOT TO SCALE

DIRECTIONS TO LOCATION

FROM THE INTERSECTION OF STATE HIGHWAY 249 AND CR 30 (JEMINA) GO NORTHWEST ON STATE HIGHWAY 249 FOR APPROX. 2.1 MILES. GO SOUTH ON CALICHE LEASE ROAD FOR APPROX. 4.4 MILES. GO SOUTHEAST APPROX. 0.5 OF A MILE. GO SOUTHWEST APPROX. 0.2 OF A MILE. LOCATION IS APPROX. 150' SOUTH.

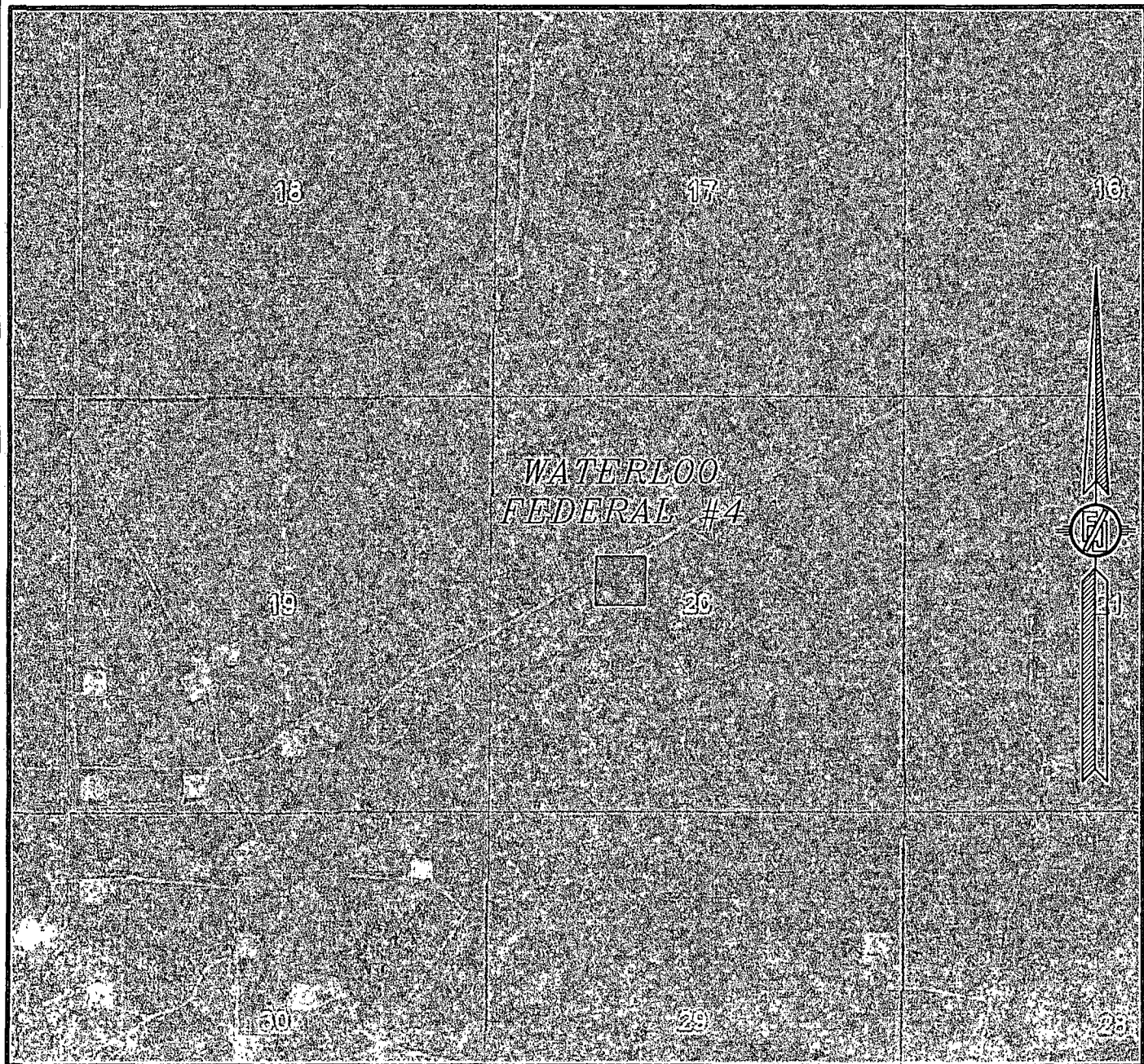
MACK ENERGY CORPORATION
WATERLOO FEDERAL #4
LOCATED 2310 FT. FROM THE NORTH LINE
AND 1650 FT. FROM THE WEST LINE OF
SECTION 20, TOWNSHIP 15 SOUTH,
RANGE 29 EAST, N.M.P.M.
CHAVES COUNTY, STATE OF NEW MEXICO

MAY 1, 2014

SURVEY NO. 2885

MADRON SURVEYING, INC. 301 SOUTH CANAL (575) 234-3341 CARLSBAD, NEW MEXICO

SECTION 20, TOWNSHIP 15 SOUTH, RANGE 29 EAST, N.M.P.M.
CHAVES COUNTY, STATE OF NEW MEXICO
AERIAL PHOTO



NOT TO SCALE
AERIAL PHOTO:
GOOGLE EARTH
APRIL 2013

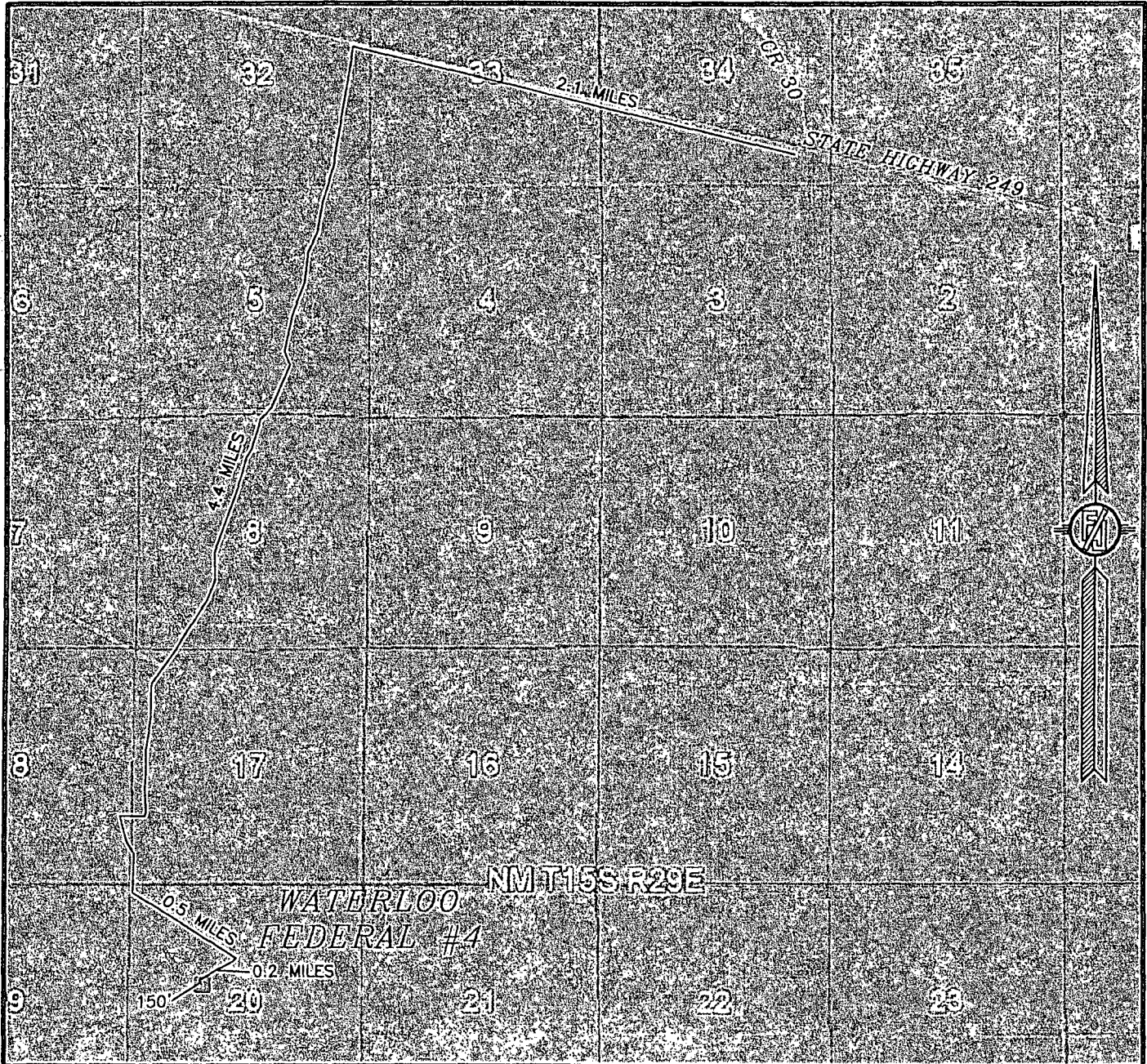
MACK ENERGY CORPORATION
WATERLOO FEDERAL #4
LOCATED 2310 FT. FROM THE NORTH LINE
AND 1650 FT. FROM THE WEST LINE OF
SECTION 20, TOWNSHIP 15 SOUTH,
RANGE 29 EAST, N.M.P.M.
CHAVES COUNTY, STATE OF NEW MEXICO

MAY 1, 2014

SURVEY NO. 2885

MADRON SURVEYING, INC. 301 SOUTH CANAL (575) 234-3341 CARLSBAD, NEW MEXICO

SECTION 20, TOWNSHIP 15 SOUTH, RANGE 29 EAST, N.M.P.M.
CHAVES COUNTY, STATE OF NEW MEXICO
ACCESS AERIAL ROUTE MAP



NOT TO SCALE
AERIAL PHOTO:
GOOGLE EARTH
FEBRUARY 2014

MACK ENERGY CORPORATION
WATERLOO FEDERAL #4
LOCATED 2310 FT. FROM THE NORTH LINE
AND 1650 FT. FROM THE WEST LINE OF
SECTION 20, TOWNSHIP 15 SOUTH,
RANGE 29 EAST, N.M.P.M.
CHAVES COUNTY, STATE OF NEW MEXICO

MAY 1, 2014

MADRON SURVEYING, INC. 301 SOUTH CANAL (575) 234-3341 CARLSBAD, NEW MEXICO SURVEY NO. 2885

FEB 17 2015

**ROSWELL FIELD OFFICE
CONDITIONS OF APPROVAL**

RECEIVED

OPERATOR'S NAME: Mack Energy Corporation - Sherrell, Jerry

LEASE NO.: NMNM121950

WELL NAME & NO.: WATERLOO FEDERAL - 4

SURFACE HOLE FOOTAGE: [2310] ' F [N] L [1650] ' F [W] L

BOTTOM HOLE FOOTAGE: [2310] ' F [N] L [1650] ' F [W] L

LOCATION: Section 020, T015. S., R 028 E., NMPM

COUNTY: Chaves County, New Mexico

1. All construction, operation and reclamation actions shall follow the regulations found at 43 CFR 3160, the Onshore Oil and Gas Orders, the Notices to Lessees (NTL's), and the Conditions of Approval (COA's).
2. A complete copy of the approved APD and the COA's shall be kept on location for reference by inspectors.

3. CONTAINMENT DIKES:

All production facilities shall have a lined containment structure large enough to contain 110% of the largest Tank plus 24 hours of production, unless more stringent protective requirements are deemed necessary by the Authorized Officer. (43 CFR 3162.5-1)

4. WELL PAD SURFACING:

Surfacing of the well pad is not required. If the operator elects to surface the well pad, final reclamation will include removal of all the surfacing material. The well pad shall be constructed in a manner which creates the smallest possible surface disturbance, consistent with safety and operational need.

5. ROAD SURFACING:

Surfacing material is not required on the new access road driving surface. If the operator elects to surface the new access road or pad, final reclamation will include removal of the surfacing material. Where possible, no improvements should be made on the unsurfaced access road other than to remove vegetation as necessary, road irregularities, safety issues, or to fill low areas that may contain standing water. The Authorized Officer reserves the right to require surfacing of any portion of the access road at any time deemed necessary. Surfacing may be required in the event the road deteriorates, erodes, road traffic increases, or it is determined to be beneficial for future field development. The surfacing depth and type of material will be determined at the time of notification.

More information regarding protections to cave and karst resources can be found in the Federal Cave Resources Protection Act of 1988.

10. WASTES, HAZARDOUS AND SOLID:

Waste materials produced during all phases of operation will be disposed of promptly in an approved manner so it will not impact the air, soil, water, vegetation or animals. "Waste" means all discarded matter including, but not limited to, human waste, trash, garbage, refuse, oil drums, petroleum products, ashes and equipment. All liquid waste, completion fluids and drilling products associated with oil and gas operations will be contained and then removed and deposited in an approved disposal facility. Portable toilets will remain on site throughout well pad construction, drilling and reclamation.

The operator and contractors shall ensure that all use, production, storage, transportation and disposal of hazardous materials, solid wastes and hazardous wastes associated with the drilling, completion and production of this well will be in accordance with all applicable existing or hereafter promulgated federal, state and local government rules, regulations and guidelines. All project related activities involving hazardous materials will be conducted in a manner to minimize potential environmental impacts. A file will be maintained onsite containing current Safety Data Sheets (SDS) for all chemicals, compounds and/or substances which are used in the course of construction, drilling, completion and production operations.

- Wait on cement (WOC) time for a primary cement job will be a minimum 18 hours or 500 pounds compression strength, whichever is greater. (This is to include the lead cement).
 - Wait on cement (WOC) time for a remedial job will be a minimum of 4 hours after bringing cement to surface or 500 pounds compression strength, whichever is greater.
 - If cement falls back, remedial action will be done prior to drilling out that string.
- B. The minimum required fill of cement behind the 5-1/2 inch production casing is sufficient to circulate to the surface. If cement does not circulate, a temperature survey utilizing an electronic type temperature survey with a surface log readout will be used or a cement bond log shall be run to verify the top of the cement.
- C. If hardband drill pipe is rotated inside casing, returns will be monitored for metal. If metal is found in samples, drill pipe will be pulled and rubber protectors which have a larger diameter than the tool joints of the drill pipe will be installed prior to continuing drilling operations.
- D. All casing shall be new or reconditioned and tested casing and meet API standards for new casing. The use of reconditioned and tested casing shall be subject to approval by the Authorized Officer. Approval will be contingent upon the wall thickness of any casing being verified to be at least 87-1/2 per cent of the nominal wall thickness of new casing.

PRESSURE CONTROL:

- A. Prior to drilling below the 8-5/8 inch surface casing shoe, the blowout preventer assembly (BOP/BOPE) shall be installed. The BOP/BOPE shall consist of a minimum of One Annular Preventer or Two Ram-Type Preventers and a Kelly Cock/Stabbing Valve.
- B. Before drilling below the 8-5/8 inch surface casing shoe, minimum working pressure of the blowout preventer and related equipment (BOPE) shall be 2000 psi. If operator chooses to use a control device greater than the minimum stand they will have to follow all guidelines as stated within Bureau of Land Management 43 CFR part 3160 and Onshore Oil and Gas Order No. 2 - Drilling Operations.
- C. The BOPE shall be installed before drilling below the 8-5/8 inch surface casing shoe and shall be tested as described in Onshore Oil and Gas Order No. 2. Any equipment failing to test satisfactorily shall be repaired or replaced.
- The BLM Roswell Field Office shall be notified a minimum of 24 hours in advance for a representative to witness the tests.

12. RECLAMATION:

Reclamation earthwork for interim and/or final reclamation shall be completed within 6 months of well completion or well plugging (weather permitting), and shall consist of:

- A. Backfilling pits,
- B. Re-contouring and stabilizing the well site, access road, cut/fill slopes, drainage channels; utility and pipeline corridors, and all other disturbed areas, to approximately the original contour, shape, function, and configuration.
- C. Surface ripping to a depth of 18-24 inches deep on 18-24 inch centers to reduce compaction (prior to topsoil placement),
- D. Final grading and replacement of all topsoil,
- E. Seeding in accordance with reclamation portions of the APD and these COA's.

Any subsequent disturbance of interim reclamation shall be reclaimed within six (6) months by the same means described herein.

Prior to conducting interim reclamation, the operator is required to:

- Submit a Sundry Notice and Reports on Wells (Notice of Intent), Form 3160-5, prior to conducting interim reclamation.
- Contact BLM at least three (3) working days prior to conducting any interim reclamation activities and prior to seeding.

The removal of caliche is important to the success of re-vegetating the site. Removed caliche may be used in road repairs, fire walls or for building other roads and locations. In addition, in order to operate the well or complete work-over operations, it may be necessary to drive, park and operate on restored interim vegetation within the previously disturbed area. Disturbing re-vegetated areas for production or work-over operations will be allowed. If there is significant disturbance and loss of vegetation, the area will need to be re-vegetated. Communicate with the appropriate BLM office for any exceptions/exemptions if needed.

Use a certified noxious weed-free seed mixture. Use seed tested for viability and purity in accordance with State law(s) within nine months of purchase. Use a commercial seed mixture certified or registered and tagged in accordance with State law(s). Make the seed mixture labels available for BLM inspection.

13. SEE ATTACHED SEED MIX: The Ecological Site Description for the well pad and access road is as follows:

Well Name	Ecosite Access rd
Waterloo Fed #4	Sandy SD-3

C. Topsoil Storage:

Topsoil and vegetation shall be stored separately from subsoil, spoils pile, or other excavated material. It is the operator's responsibility to ensure that topsoil, caliche, spoils, or other surfacing materials are not mixed together. Topsoil, spoil materials, and other excavated material may be stored on opposite or adjacent sides of the well pad. If topsoil and spoils are stored on the same well pad side, they will be no closer than toe to toe. Overlapping of material is not permitted. Each material pile will be within 30 feet of the pad's side.

D. Topsoil Replacement

All topsoil will be used for reclamation. Any other use of topsoil is not permitted.

Prior to termination, the operator shall contact the Authorized Officer to arrange a joint inspection of the access road. This inspection will be held to agree to an acceptable termination (and rehabilitation) plan. This plan shall include, but is not limited to, removal of facilities, drainage structures, or surface material, re-contouring, top soiling, or seeding. The Authorized Officer must approve the plan in writing prior to the operator's commencement of any termination activities.

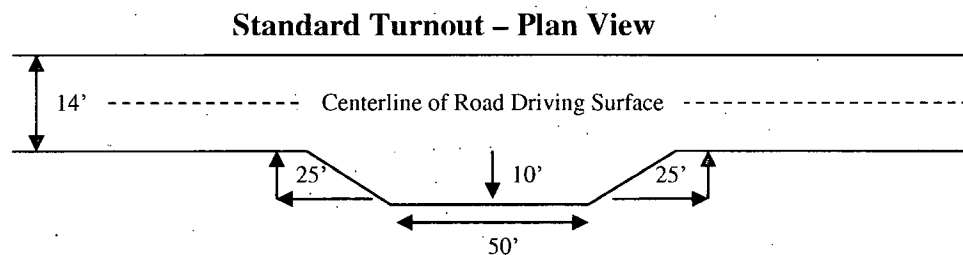
Where possible, no improvements should be made on the reclaimed portions of the access road other than to remove vegetation as necessary, road irregularities, safety issues, or to fill low areas that may sustain standing water.

The Authorized Officer reserves the right to require surfacing of any portion of the access road at any time deemed necessary. Surfacing may be required in the event the road deteriorates, erodes, road traffic increases, or it is determined to be beneficial for future field development. The surfacing depth and type of material will be determined at the time of notification.

The access road shall have a driving surface that creates the smallest possible surface disturbance and does not exceed fourteen (14) feet in width. The maximum width of surface disturbance, when constructing the access road, shall not exceed thirty (30) feet.

Crowning shall be done on the access road driving surface. The road crown shall have a grade of approximately 2% (i.e., a 1" crown on a 14' wide road). The road shall conform to Figure 1; cross section and plans for typical road construction.

Vehicle turnouts shall be constructed on the road. Turnouts shall be intervisible with interval spacing distance less than 1000 feet. Turnouts shall be constructed on all blind curves. Turnouts shall conform to the following diagram:



Drainage control systems shall be constructed on the entire length of road (e.g. ditches, side-hill, out-sloping and in-sloping, lead-off ditches, culvert installation, and low water crossings).

A typical lead-off ditch has a minimum depth of 1 foot below and a berm of 6 inches above natural ground level. The berm shall be on the down-slope side of the lead-off ditch.

SEED MIX FOR

Soil: Sotim-Simona association, moderately undulating

Ecological Site: Shallow Sand SD-3

Ecological Site: Sandy SD-3

March 19, 2001

Common Name

Pounds of

<u>and Preferred Variety</u>	<u>Scientific Name</u>	<u>Pure Live Seed Per Acre</u>
Black grama or Blue grama, var. Lovington	(<i>Bouteloua eriopoda</i>) (<i>Bouteloua gracilis</i>)	5.0
Sideoats grama var. Vaughn or El Reno	(<i>Bouteloua curtipendula</i>)	1.0
Sand dropseed or Mesa dropseed or Spike dropseed	(<i>Sporobolus cryptandrus</i>) (<i>S. flexuosus</i>) (<i>S. contractus</i>)	0.5
Desert or Scarlet Globemallow	(<i>Sphaeralcea ambigua</i>) or (<i>S. coccinea</i>)	1.0
Croton	(<i>Croton</i> spp.)	1.0
TOTAL POUNDS PURE LIVE SEED PER ACRE		8.5

Certified Weed Free Seed. A minimum of 4 species is required, including 1 forb species.

IF ONE SPECIES IS NOT AVAILABLE,
INCREASE ALL OTHERS PROPORTIONATELY