

NM OIL CONSERVATION
ARTESIA DISTRICT
MAR 04 2014

RECEIVED

FORM APPROVED
OMB No. 1004-0137
Expires October 31, 2014

UNITED STATES
DEPARTMENT OF THE INTERIOR
BUREAU OF LAND MANAGEMENT

AMENDED

APPLICATION FOR PERMIT TO DRILL OR REENTER

5. Lease Serial No. NMNM-121940	
6. If Indian, Allottee or Tribe Name	
7. If Unit or CA Agreement, Name and No. <314207>	
8. Lease Name and Well No. Churchill Federal #7	
9. API Well No. 30-005-64266	
10. Field and Pool, or Exploratory Round Tank; San Andres	
11. Sec., T. R. M. or Blk. and Survey or Area Sec. 13 T15S R28E	
12. County or Parish Chaves	13. State NM

1a. Type of work: ☒ DRILL ☐ REENTER

1b. Type of Well: ☒ Oil Well ☐ Gas Well ☐ Other ☒ Single Zone ☐ Multiple Zone

2. Name of Operator
Mack Energy Corporation

3a. Address
PO Box 960 Artesia, NM 88211-0960

3b. Phone No. (include area code)
(575)748-1288

4. Location of Well (Report location clearly and in accordance with any State requirements. *)
At surface 1450 FSL & 2460 FWL
At proposed prod. zone 1675 FSL & 2285 FWL

14. Distance in miles and direction from nearest town or post office*
12 miles northwest of Loco Hills, NM

15. Distance from proposed*
location to nearest
property or lease line, ft.
(Also to nearest drlg. unit line, if any) 330'

16. No. of acres in lease
2560

17. Spacing Unit dedicated to this well
40

18. Distance from proposed location*
to nearest well, drilling, completed,
applied for, on this lease, ft. 1320'

19. Proposed Depth
TVD 3500'
MD 3521.8'

20. BLM/BIA Bond No. on file
NMB000286

21. Elevations (Show whether DF, KDB, RT, GL, etc.)

3727' GL

22. Approximate date work will start*

11/1/2014

23. Estimated duration

7 days

24. Attachments

The following, completed in accordance with the requirements of Onshore Oil and Gas Order No. 1, must be attached to this form:

1. Well plat certified by a registered surveyor.
2. A Drilling Plan.
3. A Surface Use Plan (if the location is on National Forest System Lands, the SUPO must be filed with the appropriate Forest Service Office).

4. Bond to cover the operations unless covered by an existing bond on file (see Item 20 above).
5. Operator certification
6. Such other site specific information and/or plans as may be required by the BLM.

25. Signature
Jerry W. Sherrell

Name (Printed/Typed)
Jerry W. Sherrell

Date
11/26/14

Title
Production Clerk

Approved by (Signature)
Charles W. Schmidt /s/
Title
Field Manager

Name (Printed/Typed)
Charles Schmidt
Office

Date
FEB 26 2015
Roswell Field
Office

Application approval does not warrant or certify that the applicant holds legal or equitable title to those rights in the subject lease which would entitle the applicant to conduct operations thereon.
Conditions of approval, if any, are attached.

Title 18 U.S.C. Section 1001 and Title 43 U.S.C. Section 1212, make it a crime for any person knowingly and willfully to make to any department or agency of the United States any false, fictitious or fraudulent statements or representations as to any matter within its jurisdiction.

District I
1625 N. French Dr., Hobbs, NM 88240
Phone: (575) 393-6161 Fax: (575) 393-6720
District II
511 S. First St., Artesia, NM 88210
Phone: (575) 748-1253 Fax: (575) 748-9720
District III
1060 Rio Brazos Road, Aztec, NM 87410
Phone: (505) 334-6178 Fax: (505) 334-6170
District IV
1220 S. St. Francis Dr., Santa Fe, NM 87505
Phone: (505) 476-3460 Fax: (505) 476-3462

State of New Mexico
Energy, Minerals & Natural Resources Department
OIL CONSERVATION DIVISION
1220 South St. Francis Dr.
Santa Fe, NM 87505

Form C-102
Revised August 1, 2011
Submit one copy to appropriate
District Office

☐ AMENDED REPORT

WELL LOCATION AND ACREAGE DEDICATION PLAT

¹ API Number 30-005-64266	² Pool Code 52770	³ Pool Name Round Tank; San Andres
⁴ Property Code 314207	⁵ Property Name CHURCHILL FEDERAL	⁶ Well Number 7
⁷ OGRID No. 13837	⁸ Operator Name MACK ENERGY CORPORATION	⁹ Elevation 3727.0

¹⁰ Surface Location

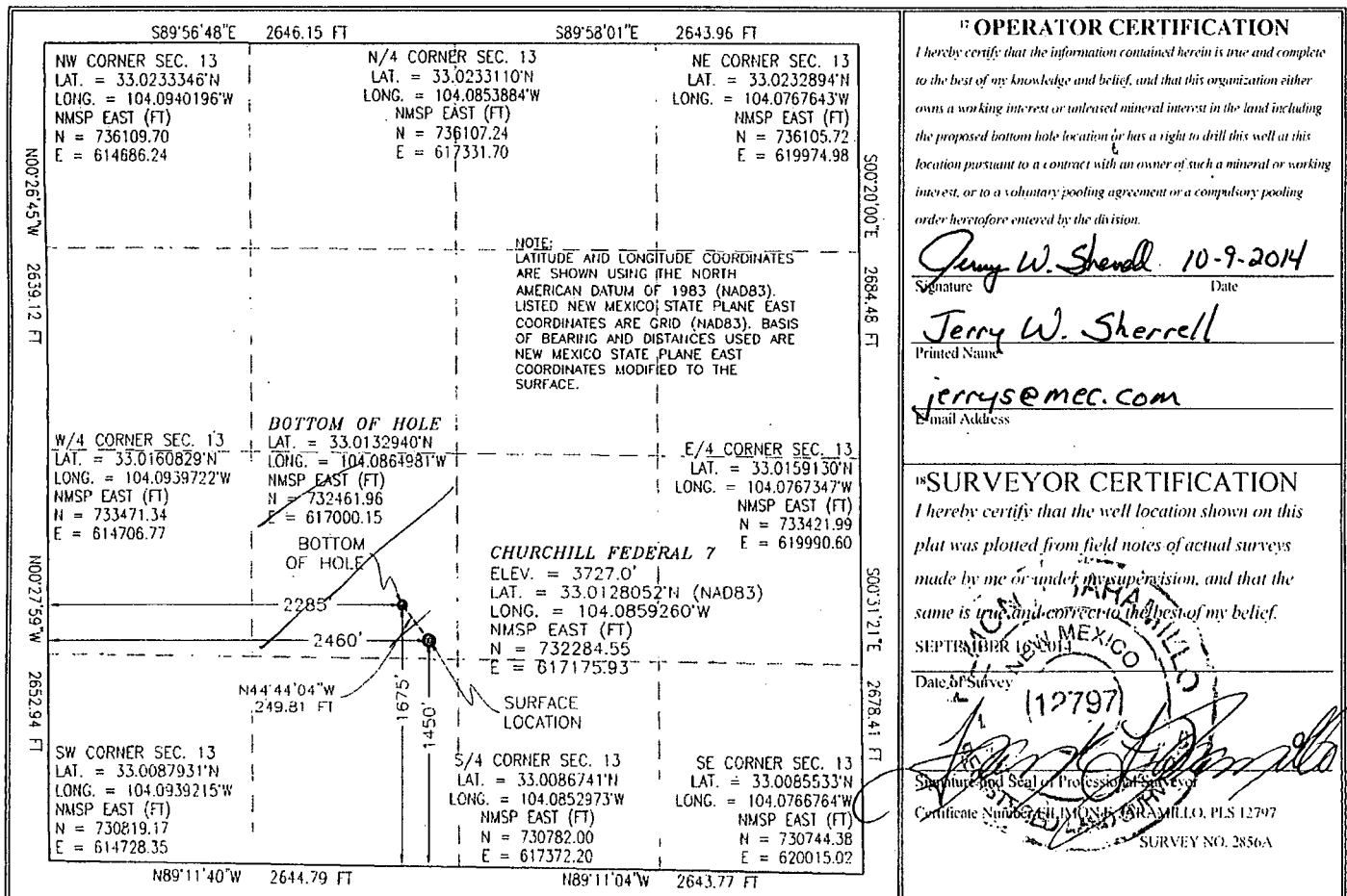
UL or lot no.	Section	Township	Range	Lot Idn	Feet from the	North/South line	Feet from the	East/West line	County
K	13	15 S	28 E		1450	SOUTH	2460	WEST	CHAVES

¹¹ Bottom Hole Location If Different From Surface

UL or lot no.	Section	Township	Range	Lot Idn	Feet from the	North/South line	Feet from the	East/West line	County
K	13	15 S	28 E		1675	SOUTH	2285	WEST	CHAVES

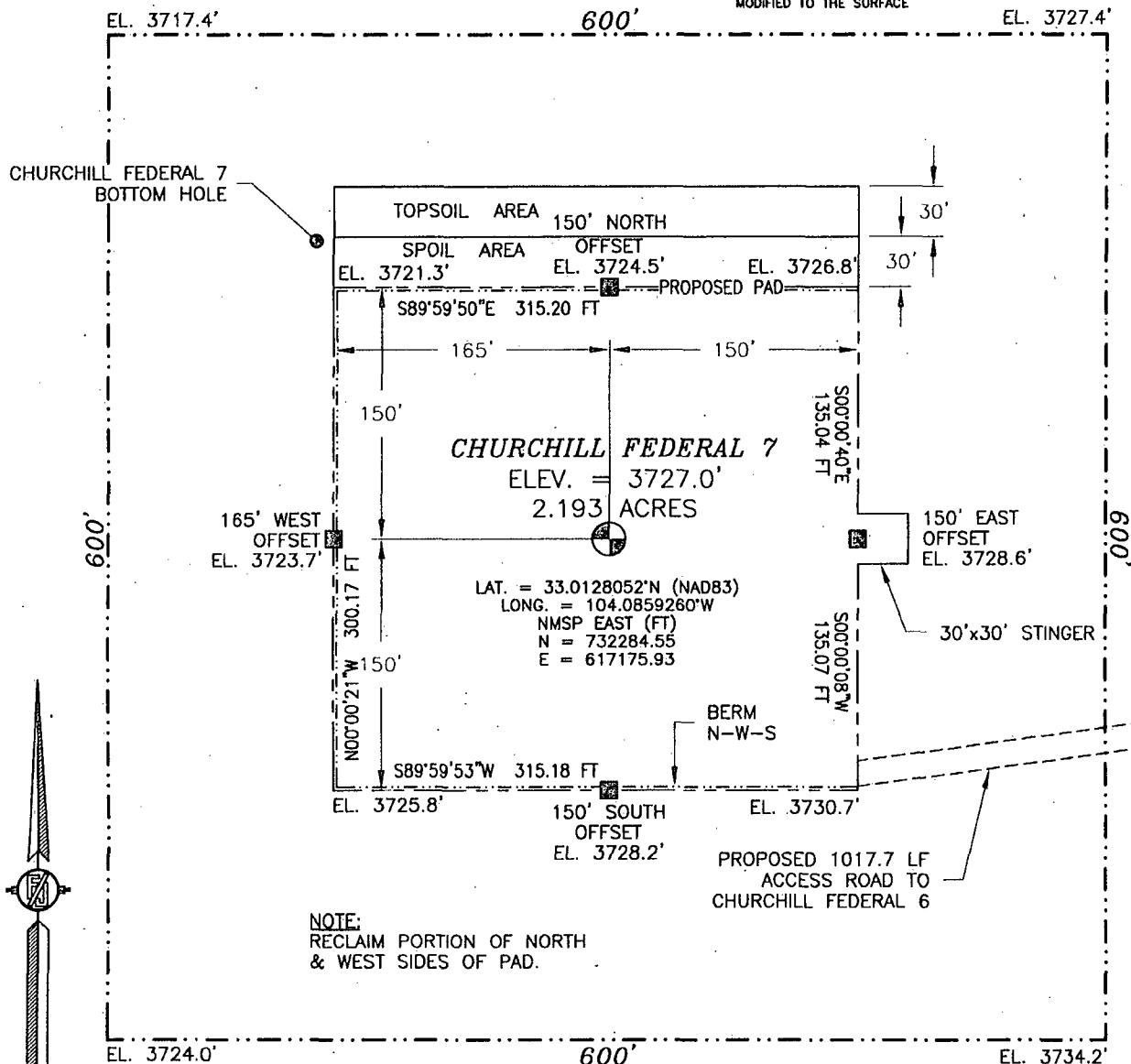
¹² Dedicated Acres 40	¹³ Joint or Infill	¹⁴ Consolidation Code	¹⁵ Order No.
--	-------------------------------	----------------------------------	-------------------------

No allowable will be assigned to this completion until all interests have been consolidated or a non-standard unit has been approved by the division.



SECTION 13, TOWNSHIP 15 SOUTH, RANGE 28 EAST, N.M.P.M.
CHAVES COUNTY, STATE OF NEW MEXICO
SITE MAP

NOTE: LATITUDE AND LONGITUDE COORDINATES ARE SHOWN USING THE NORTH AMERICAN DATUM OF 1983 (NAD83). LISTED NEW MEXICO STATE PLANE EAST COORDINATES ARE GRID (NAD83). BASIS OF BEARING AND DISTANCES USED ARE NEW MEXICO STATE PLANE EAST COORDINATES MODIFIED TO THE SURFACE



NOTE:
RECLAIM PORTION OF NORTH
& WEST SIDES OF PAD.

010 50 100 200
SCALE 1" = 100'

DIRECTIONS TO LOCATION

FROM THE INTERSECTION OF STATE HIGHWAY 249 AND CR 30 (JEMINA) GO NORTHWEST ON STATE HIGHWAY 249 FOR APPROX. 2.1 MILES. GO SOUTH ON 20' CALICHE LEASE ROAD FOR APPROX. 4.4 MILES. GO SOUTHEAST APPROX. 0.5 OF A MILE. GO SOUTHWEST APPROX. 1.2 MILES. GO WEST APPROX. 0.4 OF A MILE. GO NORTHWEST APPROX. 1.3 MILES. GO WEST APPROX. 260.8' TO THE SOUTHEAST CORNER OF CHURCHILL FEDERAL 6. FROM SOUTHWEST CORNER GO WEST APPROX. 1017.7' TO THE SOUTHEAST CORNER FOR THIS LOCATION.

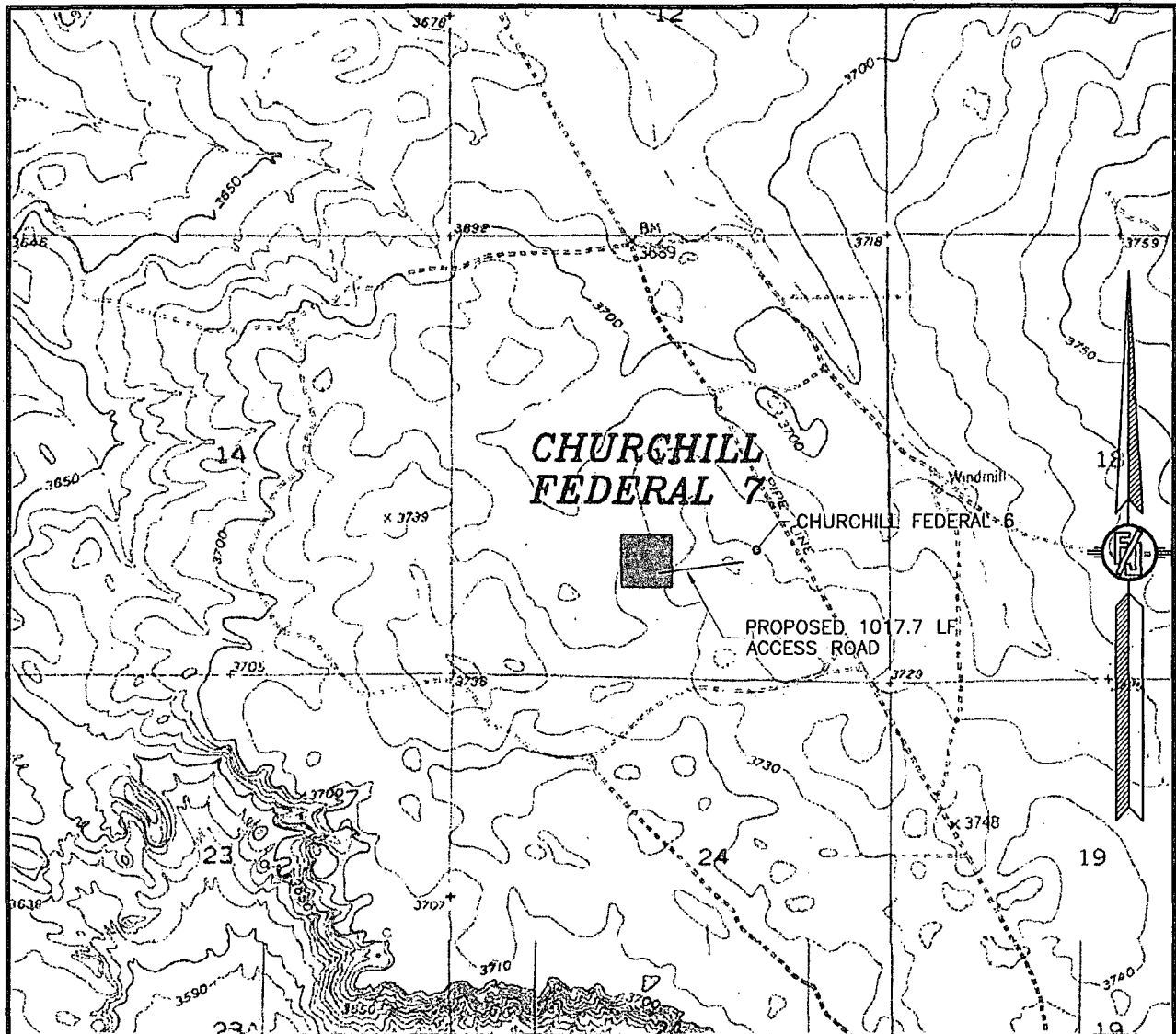
MACK ENERGY CORPORATION
CHURCHILL FEDERAL 7
LOCATED 1450 FT. FROM THE SOUTH LINE
AND 2460 FT. FROM THE WEST LINE OF
SECTION 13, TOWNSHIP 15 SOUTH,
RANGE 28 EAST, N.M.P.M.
CHAVES COUNTY, STATE OF NEW MEXICO

SEPTEMBER 16, 2014

SURVEY NO. 2856A

MADRON SURVEYING, INC. 301 SOUTH CANAL CARLSBAD, NEW MEXICO
(575) 234-3341

SECTION 13, TOWNSHIP 15 SOUTH, RANGE 28 EAST, N.M.P.M.
CHAVES COUNTY, STATE OF NEW MEXICO
LOCATION VERIFICATION MAP



USGS QUAD MAP:
KING CAMP

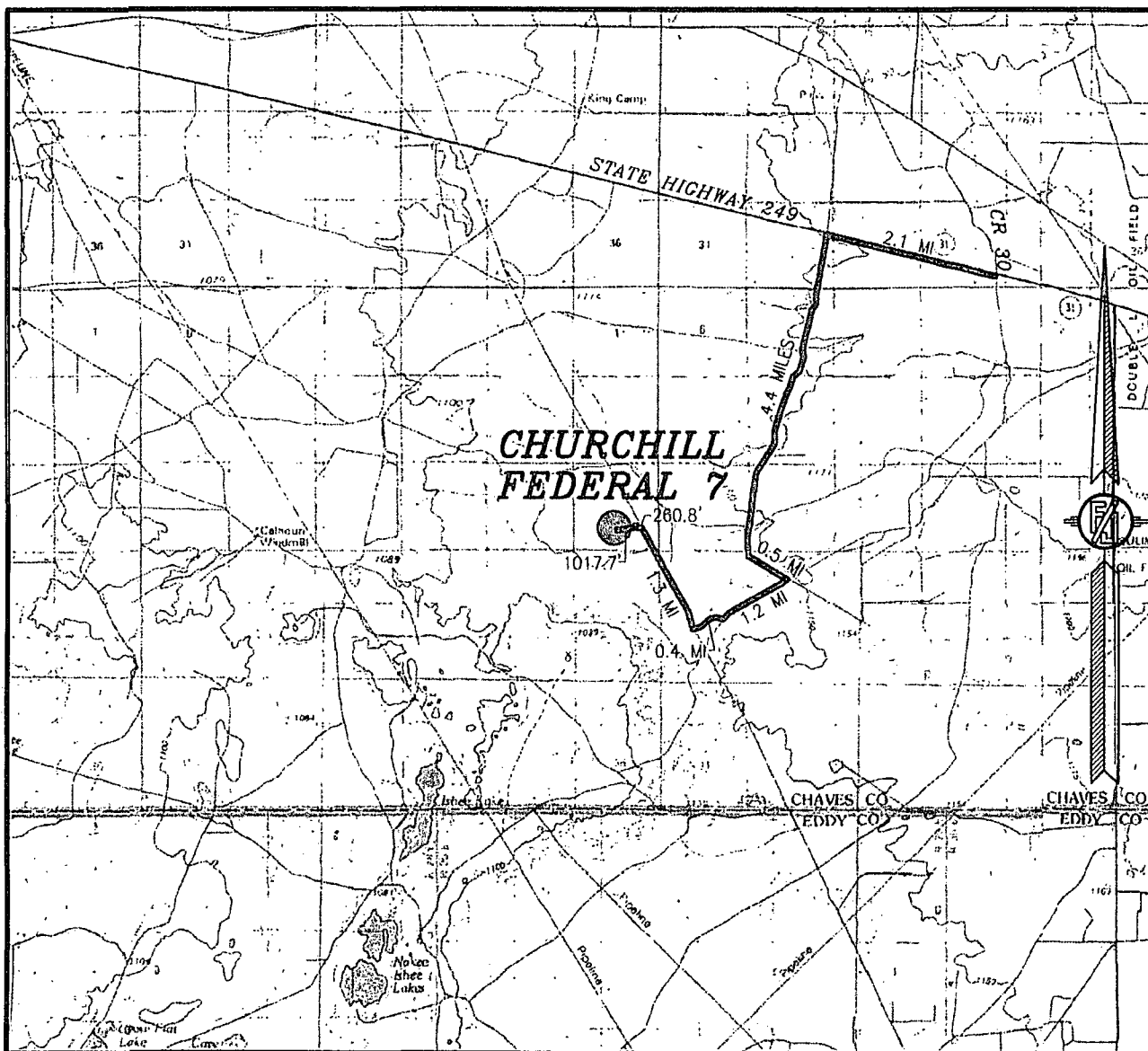
NOT TO SCALE

MACK ENERGY CORPORATION
CHURCHILL FEDERAL 7
LOCATED 1450 FT. FROM THE SOUTH LINE
AND 2460 FT. FROM THE WEST LINE OF
SECTION 13, TOWNSHIP 15 SOUTH,
RANGE 28 EAST, N.M.P.M.
CHAVES COUNTY, STATE OF NEW MEXICO

SEPTEMBER 16, 2014

MADRON SURVEYING, INC. 301 SOUTH CANAL (575) 234-3341 CARLSBAD, NEW MEXICO SURVEY NO. 2856A

SECTION 13, TOWNSHIP 15 SOUTH, RANGE 28 EAST, N.M.P.M.
CHAVES COUNTY, STATE OF NEW MEXICO
VICINITY MAP



DISTANCES IN MILES

NOT TO SCALE

DIRECTIONS TO LOCATION

FROM THE INTERSECTION OF STATE HIGHWAY 249 AND CR 30 (JEMINA) GO NORTHWEST ON STATE HIGHWAY 249 FOR APPROX. 2.1 MILES. GO SOUTH ON 20' CALICHE LEASE ROAD FOR APPROX. 4.4 MILES. GO SOUTHEAST APPROX. 0.5 OF A MILE. GO SOUTHWEST APPROX. 1.2 MILES. GO WEST APPROX. 0.4 OF A MILE. GO NORTHWEST APPROX. 1.3 MILES. GO WEST APPROX. 260.8' TO THE SOUTHEAST CORNER OF CHURCHILL FEDERAL 6. FROM SOUTHWEST CORNER GO WEST APPROX. 1017.7' TO THE SOUTHEAST CORNER FOR THIS LOCATION.

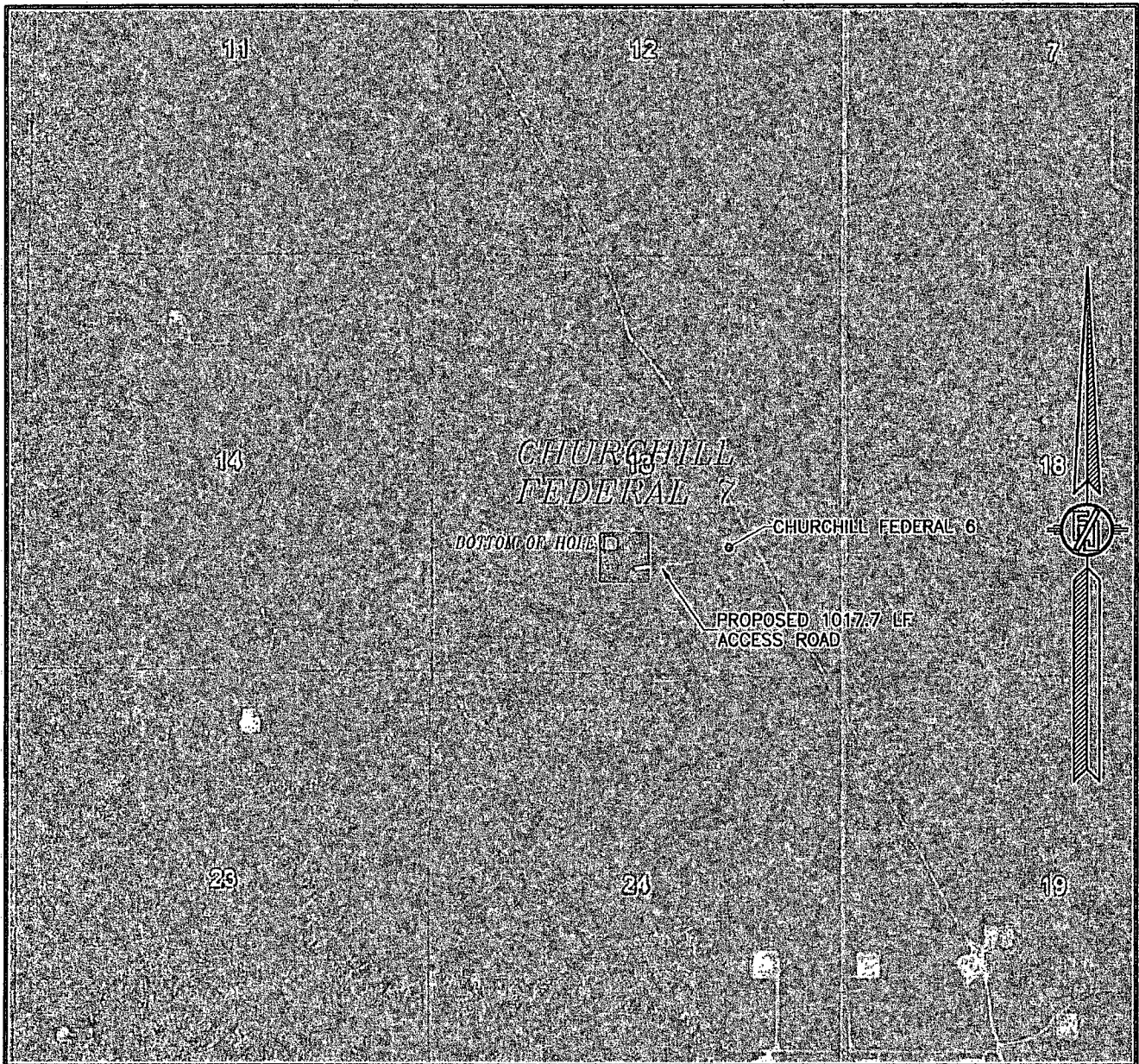
MACK ENERGY CORPORATION
CHURCHILL FEDERAL 7
LOCATED 1450 FT. FROM THE SOUTH LINE
AND 2460 FT. FROM THE WEST LINE OF
SECTION 13, TOWNSHIP 15 SOUTH,
RANGE 28 EAST, N.M.P.M.
CHAVES COUNTY, STATE OF NEW MEXICO

SEPTEMBER 16, 2014

SURVEY NO. 2856A

MADRON SURVEYING, INC. 301 SOUTH CANAL (575) 234-3341 CARLSBAD, NEW MEXICO

SECTION 13, TOWNSHIP 15 SOUTH, RANGE 28 EAST, N.M.P.M.
CHAVES COUNTY, STATE OF NEW MEXICO
AERIAL PHOTO



NOT TO SCALE
AERIAL PHOTO:
GOOGLE EARTH
APRIL 2013

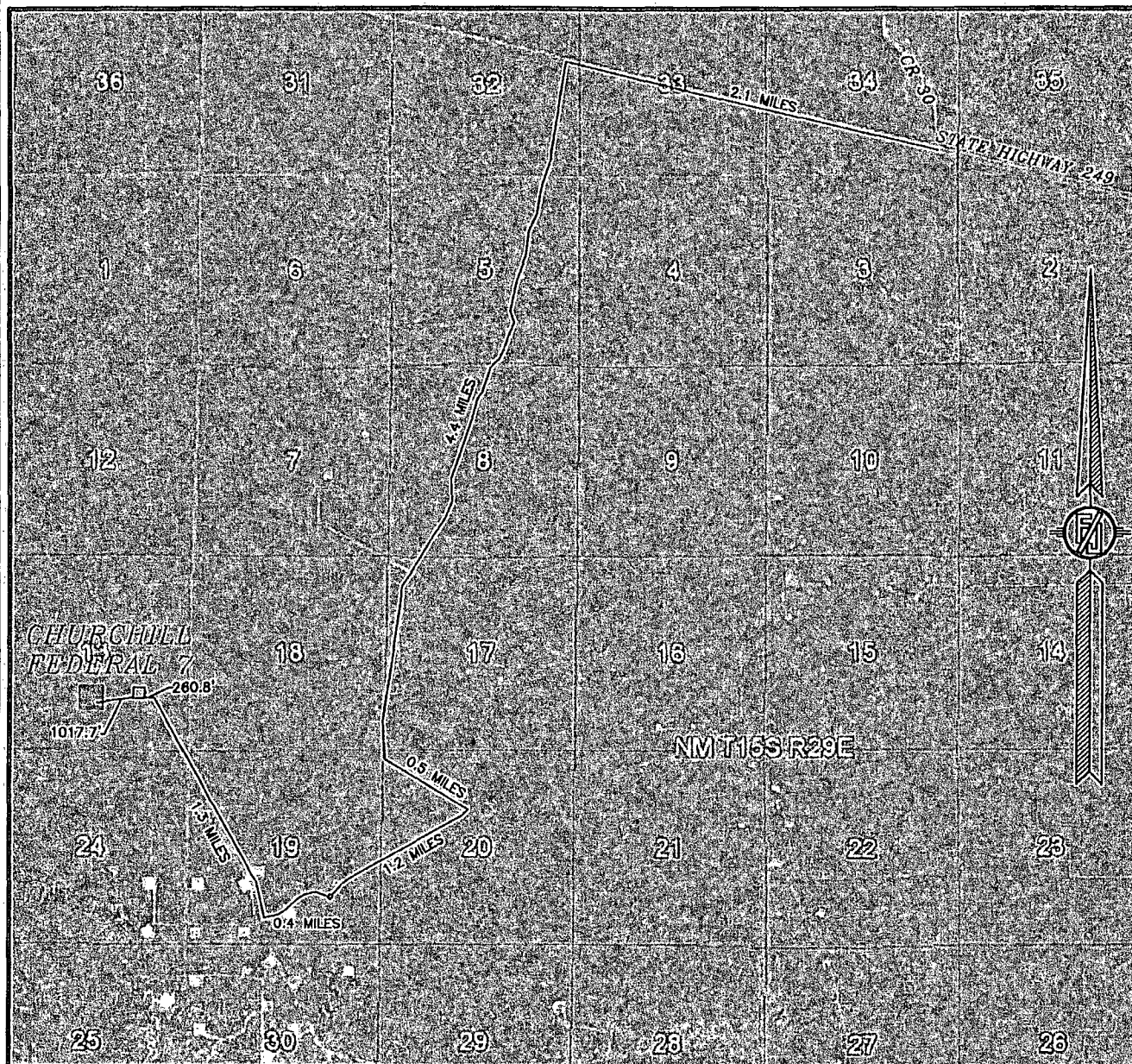
MACK ENERGY CORPORATION
CHURCHILL FEDERAL 7
LOCATED 1450 FT. FROM THE SOUTH LINE
AND 2460 FT. FROM THE WEST LINE OF
SECTION 13, TOWNSHIP 15 SOUTH,
RANGE 28 EAST, N.M.P.M.
CHAVES COUNTY, STATE OF NEW MEXICO

SEPTEMBER 16, 2014

SURVEY NO. 2856A

MADRON SURVEYING, INC. 301 SOUTH CANAL CARLSBAD, NEW MEXICO
(575) 234-3341

SECTION 13, TOWNSHIP 15 SOUTH, RANGE 28 EAST, N.M.P.M.
CHAVES COUNTY, STATE OF NEW MEXICO
ACCESS AERIAL ROUTE MAP



NOT TO SCALE
AERIAL PHOTO:
GOOGLE EARTH
FEBRUARY 2014

MACK ENERGY CORPORATION
CHURCHILL FEDERAL 7
LOCATED 1450 FT. FROM THE SOUTH LINE
AND 2460 FT. FROM THE WEST LINE OF
SECTION 13, TOWNSHIP 15 SOUTH,
RANGE 28 EAST, N.M.P.M.
CHAVES COUNTY, STATE OF NEW MEXICO

SEPTEMBER 16, 2014

SURVEY NO. 2856A

MADRON SURVEYING, INC. 301 SOUTH CANAL (575) 234-3341 CARLSBAD, NEW MEXICO

PECOS DISTRICT CONDITIONS OF APPROVAL

OPERATOR'S NAME: Mack Energy Corporation - Sherrell, Jerry

LEASE NO.: NMNM-121940

WELL NAME & NO.: CHURCHILL FEDERAL - 7

SURFACE HOLE FOOTAGE: [1450] ' F [S] L [2460] ' F [W] L

BOTTOM HOLE FOOTAGE: [1450] ' F [S] L [2460] ' F [W] L

LOCATION: Section 013, T01S. S., R 028 E., NMPM

COUNTY: Chaves County, New Mexico

1. All construction, operation and reclamation actions shall follow the regulations found at 43 CFR 3160, the Onshore Oil and Gas Orders, the Notices to Lessees (NTLs), and the Conditions of Approval (COAs).
2. A complete copy of the approved APD and the COAs shall be kept on location for reference by inspectors.

3. CONTAINMENT DIKES:

All production facilities shall have a lined containment structure large enough to contain 110% of the largest Tank plus 24 hours of production, unless more stringent protective requirements are deemed necessary by the Authorized Officer. (43 CFR 3162.5-1)

4. WELL PAD SURFACING:

Surfacing of the well pad is not required. If the operator elects to surface the well pad, final reclamation will include removal of all the surfacing material. The well pad shall be constructed in a manner which creates the smallest possible surface disturbance, consistent with safety and operational need.

5. ROAD SURFACING:

Surfacing material is not required on the new access road driving surface. If the operator elects to surface the new access road or pad, final reclamation will include removal of the surfacing material. Where possible, no improvements should be made on the unsurfaced access road other than to remove vegetation as necessary, road irregularities, safety issues, or to fill low areas that may contain standing water. The Authorized Officer reserves the right to require surfacing of any portion of the access road at any time deemed necessary. Surfacing may be required in the event the road deteriorates, erodes, road traffic increases, or it is determined to be beneficial for future field development. The surfacing depth and type of material will be determined at the time of notification.

6. PIPELINE PROTECTION REQUIREMENT:

Precautionary measures shall be taken by the operator during construction of the access road to protect existing pipelines that the access road will cross over. An earthen berm; 2 feet high by 3 feet wide and 14 feet across the access road travelway (2' X 3' X 14'), shall be constructed over existing pipelines. The operator shall be held responsible for any damage to existing pipelines. If the pipeline is ruptured and/or damaged the operator shall immediately cease construction operations and repair the pipeline. The operator shall be held liable for any unsafe construction operations that threaten human life and/or cause the destruction of equipment.

7. ARCHAEOLOGICAL, PALEONTOLOGY & HISTORICAL SITES

Any cultural and/or paleontological resource discovered by the operator or by any person working on the operator's behalf shall immediately report such findings to the Authorized Officer. The operator shall suspend all operations in the immediate area of such discovery until written authorization to proceed is issued by the Authorized Officer. An evaluation of the discovery shall be made by the Authorized Officer to determine the appropriate actions that shall be required to prevent the loss of significant cultural or scientific values of the discovery. The operator shall be held responsible for the cost of the proper mitigation measures that the Authorized Officer assesses after consultation with the operator on the evaluation and decisions of the discovery. Any unauthorized collection or disturbance of cultural or paleontological resources may result in a shutdown order by the Authorized Officer.

8. VISUAL RESOURCE MANAGEMENT (VRM):

Through color manipulation, by painting well facilities to blend with the rolling to flat vegetative and/or landform setting with a gray-green color, the view is expected to favorably blend with the form, line, color and texture of the existing landscape. The flat color Oil Green from the Standard Environmental Supplemental Colors (March 2007) also closely approximates the grey to grey-green setting. All facilities, including the meter building, would be painted this color. The paint formula is 17-0115 TPX (Pantone for Architecture and Interior Colors Guide 2003).

9. CAVE AND KARST RESOURCES:

Any Cave or Karst feature discovered by the operator or by any person working on the operator's behalf shall immediately report the feature to the Authorized Officer. The operator shall suspend all operations in the immediate area of such discovery until written authorization to proceed is issued by the Authorized Officer. To mitigate or lessen the probability of impacts associated with the drilling and production of oil and gas wells in karst areas, the operator will follow the guidelines listed in Appendix 3 of the 1997 Roswell Resource Management Plan, as amended, Practices for Oil and Gas Drilling and Production in Cave and Karst Areas.

A more complete discussion of the impacts of oil and gas drilling can be found in the Dark Canyon Environmental Impact Statement of 1993, published by the U.S. Department of the Interior, Bureau of Land Management.

More information regarding protections to cave and karst resources can be found in the Federal Cave Resources Protection Act of 1988.

10. WASTES, HAZARDOUS AND SOLID:

Waste materials produced during all phases of operation will be disposed of promptly in an approved manner so it will not impact the air, soil, water, vegetation or animals. "Waste" means all discarded matter including, but not limited to, human waste, trash, garbage, refuse, oil drums, petroleum products, ashes and equipment. All liquid waste, completion fluids and drilling products associated with oil and gas operations will be contained and then removed and deposited in an approved disposal facility. Portable toilets will remain on site throughout well pad construction, drilling and reclamation.

The operator and contractors shall ensure that all use, production, storage, transportation and disposal of hazardous materials, solid wastes and hazardous wastes associated with the drilling, completion and production of this well will be in accordance with all applicable existing or hereafter promulgated federal, state and local government rules, regulations and guidelines. All project related activities involving hazardous materials will be conducted in a manner to minimize potential environmental impacts. A file will be maintained onsite containing current Safety Data Sheets (SDS) for all chemicals, compounds and/or substances which are used in the course of construction, drilling, completion and production operations.

11. DRILLING:

DRILLING OPERATIONS REQUIREMENTS:

- A. The BLM is to be notified a minimum of 24 hours in advance for a representative to witness:
- Spudding well,
 - Setting and/or Cementing of all casing strings,
 - BOPE tests.

The Roswell Field Office Engineer on-call phone number is: (575) 627-0205.

- B. A Hydrogen Sulfide (H₂S) Drilling Operation Contingency Plan shall be activated prior to drilling into the Queen formation. A copy of the plan shall be posted at the drilling site.
- C. Unless the production casing has been run and cemented or the well has been properly plugged, the drilling rig shall not be removed from over the hole without prior approval.
- D. Include the API Number assigned to well by NMOCD on the subsequent report of setting the first casing string.
- E. The operator will accurately measure the drilling rate in feet/min to set the base of the usable water protection casing string(s) opposite competent rock. The record of the drilling rate along with the caliper-gamma ray-neutron well log run to surface will be

submitted to this office as well as all other logs run on the borehole 30 days from completion.

- F. Air, air-mist or fresh water and nontoxic drilling mud shall be used to drill to the base of the usable water protection casing string(s). Any polymers used will be water based and non-toxic.

CASING:

- A. Deepest depth of usable water occurs at an approximate depth of 83 feet. The operator will run 40 feet of conductor pipe and ready mix cement to the surface. The 8-5/8 inch usable water protection casing string(s) shall be set in competent bedrock at the top of the salt between 145 feet and 165 feet.
- If cement does not circulate to the surface, the Roswell Field Office shall be notified and a temperature survey utilizing an electronic type temperature survey with a surface log readout will be used or a cement bond log shall be run to verify the top of the cement.
 - Wait on cement (WOC) time for a primary cement job will be a minimum 18 hours or 500 pounds compression strength, whichever is greater. (This is to include the lead cement).
 - Wait on cement (WOC) time for a remedial job will be a minimum of 4 hours after bringing cement to surface or 500 pounds compression strength, whichever is greater.
 - If cement falls back, remedial action will be done prior to drilling out that string.
- B. The minimum required fill of cement behind the 5-1/2 inch production casing is sufficient to circulate to the surface. If cement does not circulate, a temperature survey utilizing an electronic type temperature survey with a surface log readout will be used or a cement bond log shall be run to verify the top of the cement.
- C. If hardband drill pipe is rotated inside casing, returns will be monitored for metal. If metal is found in samples, drill pipe will be pulled and rubber protectors which have a larger diameter than the tool joints of the drill pipe will be installed prior to continuing drilling operations.
- D. All casing shall be new or reconditioned and tested casing and meet API standards for new casing. The use of reconditioned and tested casing shall be subject to approval by the Authorized Officer. Approval will be contingent upon the wall thickness of any casing being verified to be at least 87-1/2 per cent of the nominal wall thickness of new casing.

PRESSURE CONTROL:

- A. Prior to drilling below the 8-5/8 inch surface casing shoe, the blowout preventer assembly (BOP/BOPE) shall be installed. The BOP/BOPE shall consist of a minimum of One Annular Preventer or Two Ram-Type Preventers and a Kelly Cock/Stabbing Valve.
- B. Before drilling below the 8-5/8 inch surface casing shoe, minimum working pressure of the blowout preventer and related equipment (BOPE) shall be 2000 psi. If operator chooses to use a control device greater than the minimum stand they will have to follow all guidelines as stated within Bureau of Land Management 43 CFR part 3160 and Onshore Oil and Gas Order No. 2 - Drilling Operations.
- C. The BOPE shall be installed before drilling below the 8-5/8 inch surface casing shoe and shall be tested as described in Onshore Oil and Gas Order No. 2. Any equipment failing to test satisfactorily shall be repaired or replaced.
 - The BLM Roswell Field Office shall be notified a minimum of 24 hours in advance for a representative to witness the tests.
 - The BOP/BOPE test shall include a low pressure test from 250 to 300 psi. The test will be held for a minimum of 10 minutes if test is done with a test plug and 30 minutes without a test plug.
 - All tests are required to be recorded on a calibrated test chart. A copy of the BOP/BOPE test will be submitted to the BLM Roswell Field Office at 2909 West Second Street, Roswell, New Mexico 88201.
 - Testing fluid must be water or an appropriate clear liquid suitable for sub-freezing temperatures. Use of drilling mud for testing is not permitted since it can mask small leaks.
 - Testing must be done in a safe workman like manner. Hard line connections shall be required.
 - The requested variance to test the BOPE prior to drilling below the 8-5/8 inch surface casing to the reduced pressure of 2000 psi by a third party is approved.

12. RECLAMATION:

Reclamation earthwork for interim and final reclamation shall be completed within 6 months of well completion or well plugging (weather permitting), and shall consist of:

- A. Backfilling pits,
- B. Re-contouring and stabilizing the well site, access road, cut/fill slopes, drainage channels, utility and pipeline corridors, and all other disturbed areas, to the original contour, shape, function, and configuration.

- C. Surface ripping to a depth of 18-24 inches deep on 18-24 inch centers to reduce compaction (prior to topsoil placement),
- D. Final grading and replacement of all topsoil,
- E. Seeding in accordance with reclamation portions of the APD and these COA's.

Any subsequent disturbance of interim reclamation shall be reclaimed within six (6) months by the same means described herein.

Prior to conducting interim reclamation, the operator is required to:

- Submit a Sundry Notice and Reports on Wells (Notice of Intent), Form 3160-5, prior to conducting interim reclamation.
- Contact BLM at least three (3) working days prior to conducting any interim reclamation activities and prior to seeding.

The removal of caliche is important to the success of re-vegetating the site. Removed caliche may be used in road repairs, fire walls or for building other roads and locations. In addition, in order to operate the well or complete work-over operations, it may be necessary to drive, park and operate on restored interim vegetation within the previously disturbed area. Disturbing re-vegetated areas for production or work-over operations will be allowed. If there is significant disturbance and loss of vegetation, the area will need to be re-vegetated. Communicate with the appropriate BLM office for any exceptions/exemptions if needed.

Use a certified noxious weed-free seed mixture. Use seed tested for viability and purity in accordance with State law(s) within nine months of purchase. Use a commercial seed mixture certified or registered and tagged in accordance with State law(s). Make the seed mixture labels available for BLM inspection.

13. SEE ATTACHED SEED MIX: The Ecological Site Description for the well pad and access road is as follows:

Well Name	Ecosite well pad	Ecosite Access Rd
Churchill Federal 7	Shallow Sandy SD-3	Shallow Sandy SD-3

14. FINAL ABANDONMENT:

- A. Upon abandonment of the well a Notice of Intent for Plug and Abandonment describing plugging procedures is required. Within 30 days of approval of the Notice you shall file with this office a Subsequent Report of Abandonment (Form 3160-5). To be included with this report is where the plugs were placed, volumes of cement used, and the well bore schematic as plugged.

- B. On private surface/federal mineral estate land the reclamation procedures on the road and well pad shall be accomplished in accordance with the Private Surface Land Owner agreements and a copy of the release is to be submitted upon abandonment.
- C. Upon abandonment of the well, all casing shall be cut-off at the base of the cellar or 3-feet below final restored ground level (whichever is deeper). The well bore shall then be covered with a metal plate at least ¼ inch thick and welded in place. The following information shall be permanently inscribed on the dry hole marker: Well name and number, the name of the operator, the lease serial number, the surveyed location (the quarter-quarter section, section, township and range or other authorized survey designation acceptable to the Authorized Officer; such as metes and bounds).
- D. The operator shall promptly plug and abandon each newly completed, re-completed or producing well which is not capable of producing in paying quantities. No well may be temporarily abandoned for more than 30 days without prior approval from this office. When justified by the operator, BLM may authorize additional delays, no one of which may exceed an additional 12 months. Upon removal of drilling or producing equipment from the site of a well which is to be permanently abandoned, the surface of the lands disturbed shall be reclaimed in accordance with an approved Notice of Intent for reclamation.

15. CLOSED LOOP SYSTEMS:

No reserve pit will be used. Steel tanks are required for drilling operations. The operator shall properly dispose of drilling contents at an authorized disposal facility. No open top tanks are permitted.

16. TOPSOIL:

A. Construction:

When saturated soil conditions exist on access roads or location, construction shall be halted until soil material dries out or is frozen sufficiently for construction to proceed without undue damage and erosion to soils, roads and locations. The topsoil will not be used to construct the containment structures or earthen dikes that are on the outside boundaries of the constructed well pad, tanks, and storage facilities.

B. Topsoil Stripping and Vegetation Removal:

Topsoil shall be stripped and vegetation shall be removed during construction of well pads, pipelines, roads, or other surface facilities. This shall include all growth medium and at a minimum, the upper two to six inches of soil (if that depth of topsoil is present), but shall also include stripping of any additional topsoil present at a site, such as indicated by color or texture. No topsoil shall be stripped when soils are moisture-saturated or frozen below the stripping depth.

C. Topsoil Storage:

Topsoil and vegetation shall be stored separately from subsoil, spoils pile, or other excavated material. It is the operator's responsibility to ensure that topsoil, caliche, spoils, or other surfacing materials are not mixed together. Topsoil, spoil materials, and other excavated material may be stored on opposite or adjacent sides of the well pad. If topsoil and spoils are stored on the same well pad side, they will be no closer than toe to

toe. Overlapping of material is not permitted. Each material pile will be within 30 feet of the pad's side.

D. Topsoil Replacement

All topsoil will be used for reclamation. Any other use of topsoil is not permitted.

17. ON LEASE ACCESS ROADS:

The operator agrees to comply with the following conditions of approval to the satisfaction of the Authorized Officer, BLM.

The operator shall construct, operate, maintain, and terminate the facilities, improvements, and structures within the access road in strict conformity with the stipulations which are made part of the permit. Any relocation, additional construction, or use that is not in accord with the approved stipulations, shall not be initiated without the prior written approval of the Authorized Officer.

The operator shall conduct all activities associated with the construction, operation, and termination of the right-of-way within the authorized limits of the access road.

The operator shall permit free and unrestricted access for all lawful purposes except for those specific areas designated as restricted by the Authorized Officer to protect the public, wildlife, livestock, or facilities constructed within the access road.

The Authorized Officer reserves the right to administrative access to public lands involved and operator may provide Authorized Officer with keys or combinations to locked gates on private property needed to access involved public lands.

Construction-related traffic shall be restricted to routes approved by the Authorized Officer. New access roads or cross-country vehicle travel will not be permitted unless prior written approval is given by the Authorized Officer.

No construction or routine maintenance activities shall be performed during periods when the soil is too wet to adequately support construction equipment. If such equipment creates ruts in excess of three inches deep, the soil shall be deemed too wet to adequately support construction equipment.

The operator shall maintain the access road in a safe, usable condition, as directed by the Authorized Officer. (A regular maintenance program shall include, but is not limited to, blading, ditching, culvert installation and surfacing).

Construction sites shall be maintained in a sanitary condition at all times; waste materials at those sites shall be disposed of promptly at an appropriate waste disposal site. "Waste" means all discarded matter including, but not limited to, human waste, trash, garbage, refuse, oil drums, petroleum products, ashes, and equipment.

The operator(s) shall comply with all applicable Federal laws and regulations existing or hereafter enacted or promulgated. In any event, the operator(s) shall comply with (40 CFR, Part 702-799), (40 CFR 761.1-761.193), (40 CFR, Part 117), Comprehensive Environmental Response, Compensation and Liability Act of 1980, Section 102b, the Comprehensive Environmental Response, Compensation and Liability Act of 1980, (42 U.S.C. 9601, et seq.) and the Resource Conservation and Recovery Act of 1976, 42 U.S.C. 6901 et seq.)

Prior to termination, the operator shall contact the Authorized Officer to arrange a joint inspection of the access road. This inspection will be held to agree to an acceptable termination (and rehabilitation) plan. This plan shall include, but is not limited to, removal of facilities, drainage structures, or surface material, re-contouring, top soiling, or seeding. The Authorized Officer must approve the plan in writing prior to the operator's commencement of any termination activities.

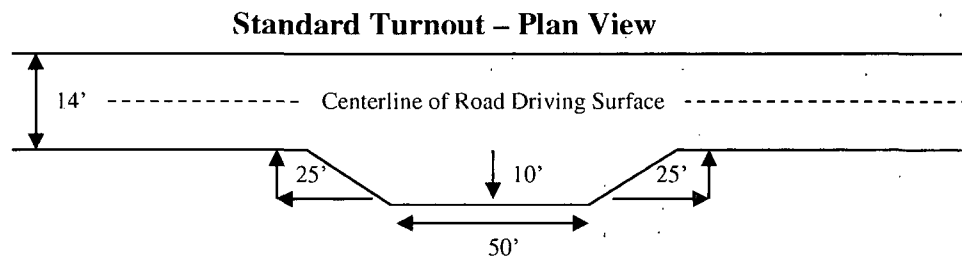
Where possible, no improvements should be made on the reclaimed portions of the access road other than to remove vegetation as necessary, road irregularities, safety issues, or to fill low areas that may sustain standing water.

The Authorized Officer reserves the right to require surfacing of any portion of the access road at any time deemed necessary. Surfacing may be required in the event the road deteriorates, erodes, road traffic increases, or it is determined to be beneficial for future field development. The surfacing depth and type of material will be determined at the time of notification.

The access road shall have a driving surface that creates the smallest possible surface disturbance and does not exceed fourteen (14) feet in width. The maximum width of surface disturbance, when constructing the access road, shall not exceed thirty (30) feet.

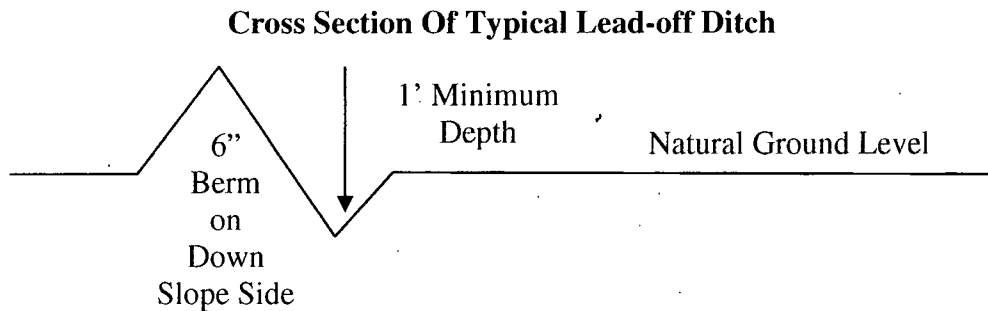
Crowning shall be done on the access road driving surface. The road crown shall have a grade of approximately 2% (i.e., a 1" crown on a 14' wide road). The road shall conform to Figure 1; cross section and plans for typical road construction.

Vehicle turnouts shall be constructed on the road. Turnouts shall be intervisible with interval spacing distance less than 1000 feet. Turnouts shall be constructed on all blind curves. Turnouts shall conform to the following diagram:



Drainage control systems shall be constructed on the entire length of road (e.g. ditches, side-hill, out-sloping and in-sloping, lead-off ditches, culvert installation, and low water crossings).

A typical lead-off ditch has a minimum depth of 1 foot below and a berm of 6 inches above natural ground level. The berm shall be on the down-slope side of the lead-off ditch.



All lead-off ditches shall be graded to drain water with a 1 percent minimum to 3 percent maximum ditch slope. The spacing interval are variable for lead-off ditches and shall be determined according to the formula for spacing intervals of lead-off ditches, but may be amended depending upon existing soil types and centerline road slope (in %);

Formula For Spacing Interval Of Lead-off Ditches

Example - On a 4% road slope that is 400 feet long, the water flow shall drain water into a lead-off ditch. Spacing interval shall be determined by the following formula:

$$400 \text{ foot road with } 4\% \text{ road slope: } \frac{400' + 100'}{4\%} = 200' \text{ lead-off ditch interval}$$

Appropriately sized culvert(s) shall be installed at the deep waterway channel flow crossing.

Dust Abatement: The operator shall implement dust abatement measures as needed to prevent fugitive dust from vehicular traffic, equipment operations, or wind events. The BLM may direct the operator to change the level and type of treatment (watering or application of various dust agents, surfactants, and road surfacing material) if dust abatement measures are observed to be insufficient to prevent fugitive dust. All agents other than water must be approved by the Authorized Officer prior to use.

Erosion Control: Cut-and-fill slopes shall be protected against erosion with the use of water bars, lateral furrows, or other measures approved by the BLM. Cut-and-fill slopes along drainages or in areas with high erosion potential shall also be protected from erosion using hydro-mulch designed specifically for erosion control or biodegradable blankets/matting, bales, or wattles of weed-free straw or weed-free native grass hay. A well-anchored fabric silt fence shall also be placed at the toe of cut-and-fill slopes along drainages or to protect other sensitive areas from deposition of soils eroded off the slopes. Additional Best Management

Practices (BMPs) shall be employed as necessary to reduce soil erosion and offsite transport of sediments.

Seeding Procedures: Seeding shall be conducted no more than 24 hours following completion of final seedbed preparation. Where conditions allow, seed shall be installed by drill-seeding to a depth of 0.25 to 0.5 inch. If interim re-vegetation is unsuccessful, the operator shall implement subsequent reseeding until interim reclamation standards are met.

18.Special Stipulations:

A two (2) foot high containment structure or earthen dike shall be constructed and maintained on the north, west, and south sides of the outside boundary of the well pad. The containment structure or earthen dike shall be constructed and maintained during the drilling phase, the production phase and for the life of the well.

SEED MIX FOR

Soil: Sotim-Simona association, moderately undulating

Ecological Site: Shallow Sand SD-3

Ecological Site: Sandy SD-3

March 19, 2001

<u>Common Name and Preferred Variety</u>	<u>Scientific Name</u>	<u>Pounds of Pure Live Seed Per Acre</u>
Black grama or Blue grama, var. Lovington	(<i>Bouteloua eriopoda</i>) (<i>Bouteloua gracilis</i>)	5.0
Sideoats grama var. Vaughn or El Reno	(<i>Bouteloua curtipendula</i>)	1.0
Sand dropseed or Mesa dropseed or Spike dropseed	(<i>Sporobolus cryptandrus</i>) (<i>S. flexuosus</i>) (<i>S. contractus</i>)	0.5
Desert or Scarlet Globemallow	(<i>Sphaeralcea ambigua</i>) or (<i>S. coccinea</i>)	1.0
<u>Croton</u>	<u>(<i>Croton</i> spp.)</u>	<u>1.0</u>
TOTAL POUNDS PURE LIVE SEED PER ACRE		8.5

Certified Weed Free Seed. A minimum of 4 species is required, including 1 forb species.

IF ONE SPECIES IS NOT AVAILABLE,
INCREASE ALL OTHERS PROPORTIONATELY