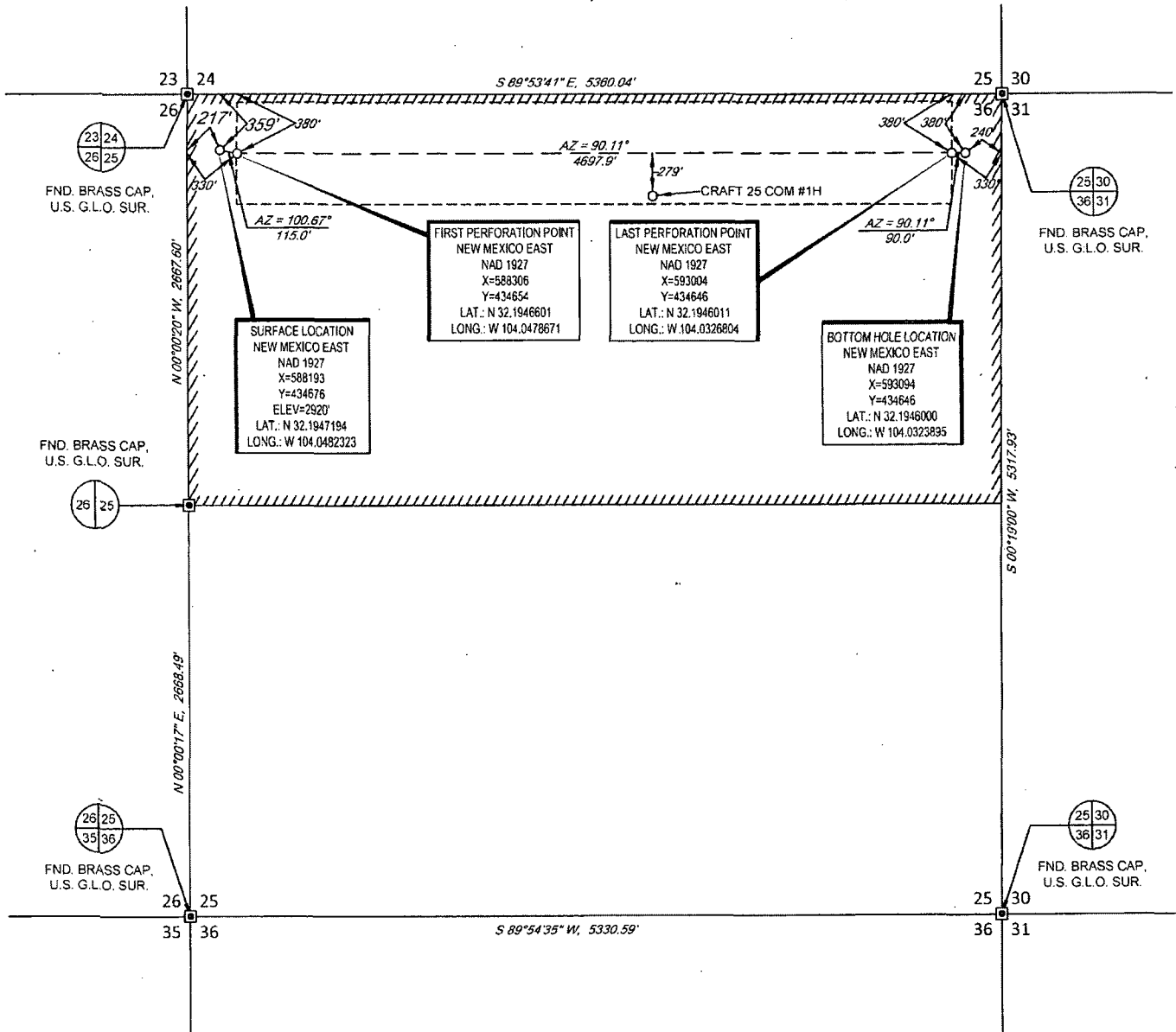


30-015-43018

SECTION 25, TOWNSHIP 24-S, RANGE 28-E, N.M.P.M.
EDDY COUNTY, NEW MEXICO

SCALE: 1" = 1000'
0' 500' 1000'

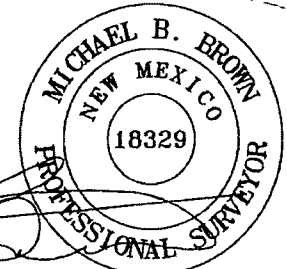
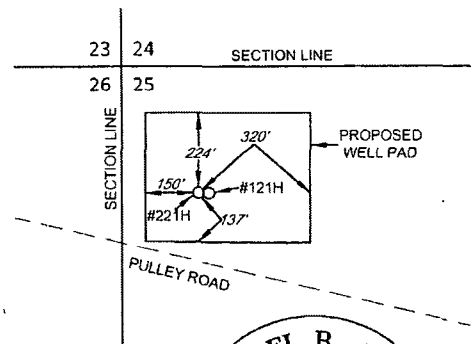
LEASE NAME & WELL NO.: PAUL 25-24S-28E RB #221H

SECTION 25 TWP 24-S RGE 28-E SURVEY N.M.P.M.
COUNTY EDDY STATE NM
DESCRIPTION 359' FNL & 217' FWL

DISTANCE & DIRECTION

FROM THE INT. OF US-285 S. & HWY-720 GO SOUTH ON US-285
S ±2.1 MILES, THENCE EAST (LEFT) ON PULLEY RD. ±1.0 MILES
TO A POINT ±200 FEET SOUTH OF THE LOCATION.

ALL BEARINGS, DISTANCES, AND COORDINATE VALUES CONTAINED HEREON ARE GRID
BASED UPON THE NEW MEXICO STATE PLANE COORDINATE SYSTEM, EAST ZONE OF THE
NORTH AMERICAN DATUM 1927, U.S. SURVEY FEET



Michael Blake Brown, P.S. No. 18329
MARCH 3, 2015

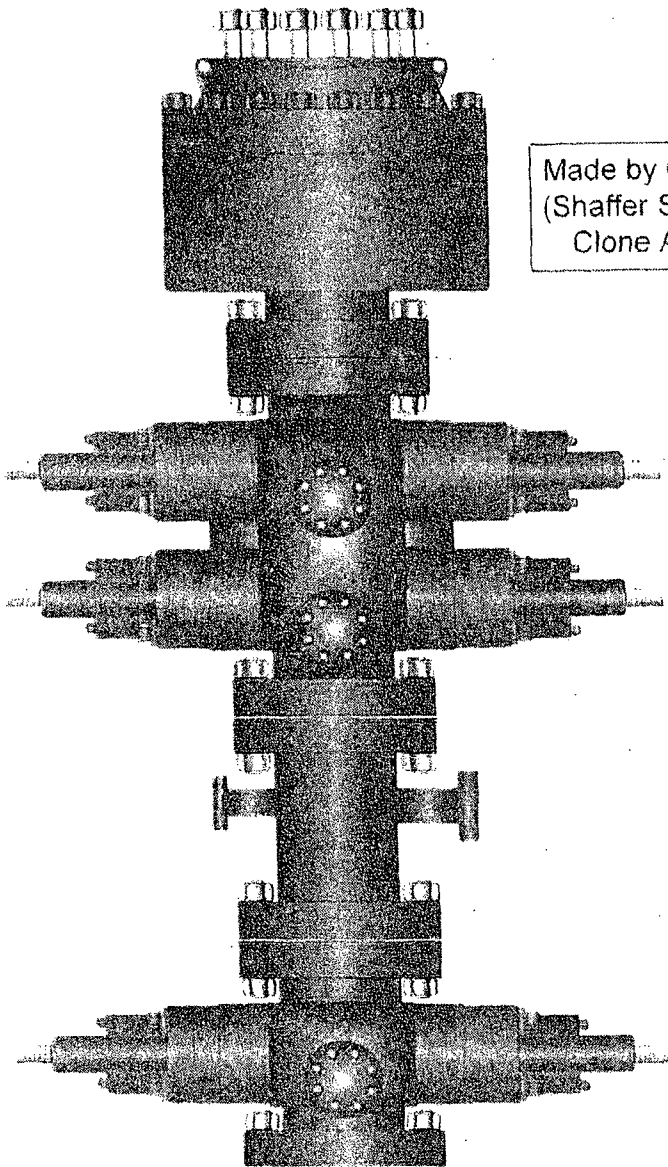




PATTERSON-UTI

Well Control

RIG: 297



Made by Cameron
(Shaffer Spherical)
Clone Annular

30-015-43018

PATTERSON-UTI # PS2-628

STYLE: New Shaffer Spherical

BORE 13 5/8" PRESSURE 5,000

HEIGHT: 48 1/2" WEIGHT: 13,800 lbs

PATTERSON-UTI # PC2-128

STYLE: New Cameron Type U

BORE 13 5/8" PRESSURE 10,000

RAMS: TOP 5" Pipe BTM Blinds

HEIGHT: 66 5/8" WEIGHT: 24,000 lbs

Length 40" Outlets 4" 10M

DSA 4" 10M x 2" 10M

PATTERSON-UTI # PC2-228

STYLE: New Cameron Type U

BORE 13 5/8" PRESSURE 10,000

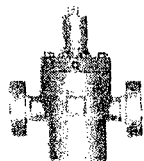
RAMS: 5" Pipe

HEIGHT: 41 5/8" WEIGHT: 13,000 lbs

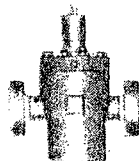
WING VALVES



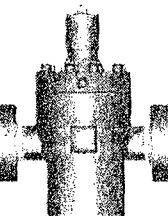
2" Check Valve



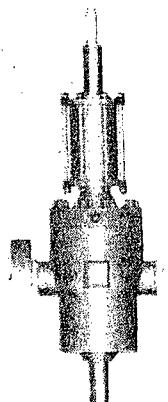
2" Manual Valve



2" Manual Valve



4" Manual Valve



4" Hydraulic Valve