

District I
1625 N. French Dr., Hobbs, NM 88240
Phone: (575) 393-6161 Fax: (575) 393-0720
District II
811 S. First St., Artesia, NM 88210
Phone: (575) 748-1283 Fax: (575) 748-9720
District III
1000 Rio Brazos Road, Aztec, NM 87410
Phone: (505) 334-6178 Fax: (505) 334-6170
District IV
1220 S. St. Francis Dr., Santa Fe, NM 87505
Phone: (505) 476-3460 Fax: (505) 476-3462

NM OIL CONSERVATION
Energy, Minerals & Natural Resources
Department
OIL CONSERVATION DIVISION
1220 South St. Francis Dr.
Sante Fe, NM 87505
RECEIVED
APR 20 2015

FORM C-102

Revised August 1, 2011

Submit one copy to appropriate

District Office

☐ AMENDED REPORT

WELL LOCATION AND ACREAGE DEDICATION PLAT

¹ API Number 15 42660	² Pool Code	³ Pool Name
⁴ Property Code	⁵ Property Name GUITAR 10-24S-28E RB	⁶ Well Number #202H
⁷ OGRID No.	⁸ Operator Name MATADOR PRODUCTION COMPANY	⁹ Elevation 2993'

¹⁰Surface Location

UL or lot no.	Section	Township	Range	Lot Idn	Feet from the	North/South line	Feet from the	East/West line	County
H	10	24-S	28-E	-	1733'	NORTH	204'	EAST	EDDY


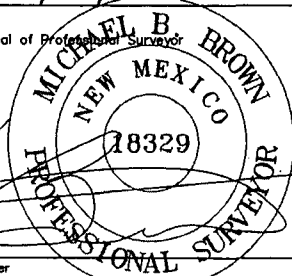
UL or lot no.	Section	Township	Range	Lot Idn	Feet from the	North/South line	Feet from the	East/West line	County
E	10	24-S	28-E	-	2221'	NORTH	233'	WEST	EDDY

¹² Dedicated Acres 320.00	¹³ Joint or Infill	¹⁴ Consolidation Code	¹⁵ Order No.
--	-------------------------------	----------------------------------	-------------------------

No allowable will be assigned to this completion until all interests have been consolidated or a non-standard unit has been approved by the division.

X=577196.75
Y=451034.71

X=582523.07
Y=450956.51

17 OPERATOR CERTIFICATION I hereby certify that the information contained herein is true and complete to the best of my knowledge and belief, and that this organization either owns a working interest or unleased mineral interest in the land including the proposed bottom hole location or has a right to drill this well at this location pursuant to a contract with an owner of such a mineral or working interest, or to a voluntary pooling agreement or a compulsory pooling order heretofore entered by the division.  Date: 4/16/2015 Printed Name: NATHAN FILBERT E-mail Address: J.FILBERT@MATADORRESOURCES.COM	
18 SURVEYOR CERTIFICATION I hereby certify that the well location shown on this plat was plotted from field notes of actual surveys made by me or under my supervision, and that the same is true to the best of my belief. 09/15/2014 Date of Survey Signature and Seal of Professional Surveyor  Certificate Number	

BOTTOM HOLE LOCATION
NEW MEXICO EAST
NAD 1927
X=577444
Y=448810
LAT.: N 32.2336473
LONG.: W 104.0828712
MD = 14150'

SURFACE LOCATION
NEW MEXICO EAST
NAD 1927
X=582320
Y=448926
LAT.: N 32.2347589
LONG.: W 104.0671001

LAST TAKE POINT
NEW MEXICO EAST
NAD 1927
X=577577
Y=448814
LAT.: N 32.2336566
LONG.: W 104.0824427
MD = 14017'

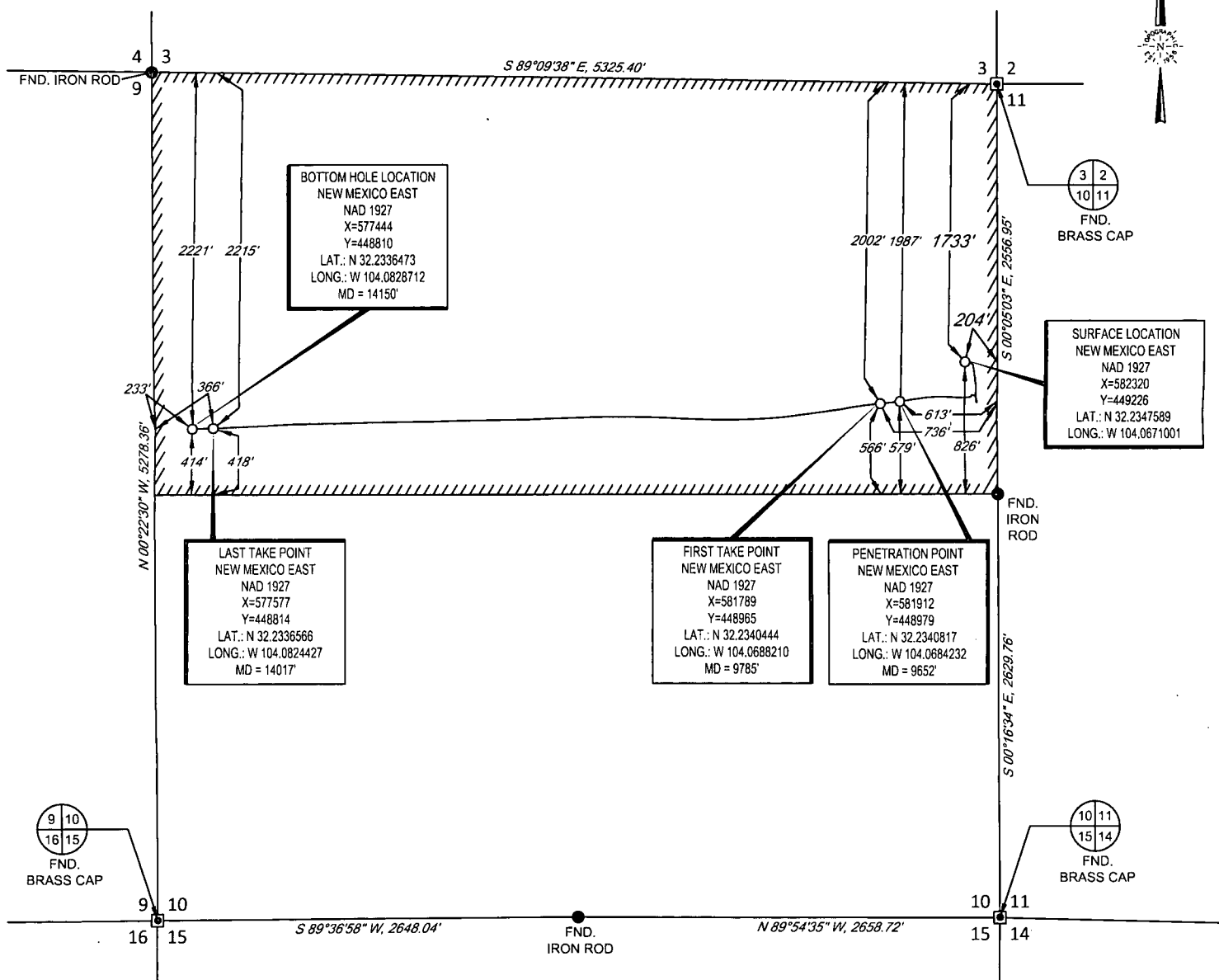
FIRST TAKE POINT
NEW MEXICO EAST
NAD 1927
X=581789
Y=448965
LAT.: N 32.2340444
LONG.: W 104.0688210
MD = 9785'

PENETRATION POINT
NEW MEXICO EAST
NAD 1927
X=581912
Y=448979
LAT.: N 32.2340817
LONG.: W 104.0684232
MD = 9652'

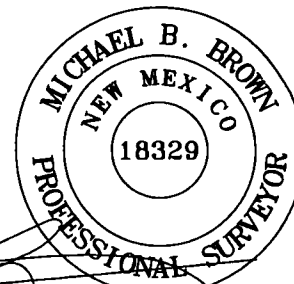
SCALE: 1" = 1000'

0' 500' 1000'

SECTION 10, TOWNSHIP 24-S, RANGE 28-E, N.M.P.M.
EDDY COUNTY, NEW MEXICO



LEASE NAME & WELL NO.: GUITAR 10-24S-28E RB #202H
SECTION 10 TWP 24-S RGE 28-E SURVEY N.M.P.M.
COUNTY EDDY STATE NM ELEVATION 2993'
DESCRIPTION 1733' FNL & 240' FEL



Michael Blake Brown, P.S. No. 18329
APRIL 15, 2015



TOPOGRAPHIC
LOYALTY INNOVATION LEGACY

1400 EVERMAN PARKWAY, Ste. 197 • FT. WORTH, TEXAS 76140
TELEPHONE: (817) 744-7512 • FAX (817) 744-7548
2903 NORTH BIG SPRING • MIDLAND, TEXAS 79705
TELEPHONE: (432) 682-1653 OR (800) 767-1653 • FAX (432) 682-1743
WWW.TOPOGRAPHIC.COM

NOTES:

1. ORIGINAL DOCUMENT SIZE: 8.5" X 11"
2. ALL BEARINGS, DISTANCES, AND COORDINATE VALUES CONTAINED HEREIN ARE GRID BASED UPON THE NEW MEXICO STATE PLANE COORDINATE SYSTEM, EAST ZONE, U.S. SURVEY FEET, NORTH AMERICAN DATUM 1927.
3. CERTIFICATION IS MADE ONLY TO THE LOCATION OF THIS EASEMENT, IN RELATION TO THE EVIDENCE FOUND DURING A FIELD SURVEY, MADE ON THE GROUND, UNDER MY SUPERVISION, AND USING DOCUMENTATION PROVIDED BY MATADOR PRODUCTION COMPANY. ONLY UTILITIES/EASEMENTS THAT WERE VISIBLE ON THE DATE OF THIS SURVEY, WITHIN/ADJOINING THIS EASEMENT, HAVE BEEN LOCATED AS SHOWN HEREON OF WHICH I HAVE KNOWLEDGE. THIS CERTIFICATION IS LIMITED TO THOSE PERSONS OR ENTITIES SHOWN ON THE FACE OF THIS PLAT AND IS NON-TRANSFERABLE, AND MADE FOR THIS TRANSACTION ONLY.

GUITAR 10-24S-28E RB
#202H AS-COMPLETED

REVISION:

INT DATE

DATE: 04/15/15

FILE:AD_GUITAR_10_24S_28E_RB_202H

DRAWN BY: M.M.L.

SHEET: 1 OF 1