

UNITED STATES
DEPARTMENT OF THE INTERIOR
BUREAU OF LAND MANAGEMENT

OCD Artesia

R-111-POTASH

FORM APPROVED
OMB No. 1004-0137
Expires October 31, 2014

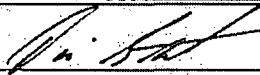
14-764

APPLICATION FOR PERMIT TO DRILL OR REENTER

1a. Type of work: <input checked="" type="checkbox"/> DRILL <input type="checkbox"/> REENTER		5. Lease Serial No. S-NMNM045236 BH-NMNM104730	
1b. Type of Well: <input checked="" type="checkbox"/> Oil Well <input type="checkbox"/> Gas Well <input type="checkbox"/> Other <input checked="" type="checkbox"/> Single Zone <input type="checkbox"/> Multiple Zone		6. If Indian, Allottee or Tribe Name	
2. Name of Operator OXY USA Inc. 16696		7. If Unit or CA Agreement, Name and No. Sundance 4 Federal #1H	
3a. Address P.O. Box 50250 Midland, TX 79710		8. Lease Name and Well No. Sundance 4 Federal #1H	
3b. Phone No. (include area code) 432-685-5717		9. API Well No. 30-015- 42368	
4. Location of Well (Report location clearly and in accordance with any State requirements.) At surface 235 FSL 500 FEL SESE(P) At proposed prod. zone 350 FSL 660 FEL SESE(P)		10. Field and Pool, or Exploratory Ingle Wells Bone Spring <33740>	
11. Sec., T. R. M. or Blk. and Survey or Area S - Sec 33 T23S R31E BH- Sec 4 T24S R31E		12. County or Parish Eddy	
13. State NM		14. Distance in miles and direction from nearest town or post office* 20 miles east from Loving, NM	
15. Distance from proposed* location to nearest property or lease line, ft. (Also to nearest drig. unit line, if any) S - 235' PP - 330'		16. No. of acres in lease 1842.12 4202.42ac	
17. Spacing Unit dedicated to this well 160.23 160ac		18. Distance from proposed location* to nearest well, drilling, completed, applied for, on this lease, ft. 154'	
19. Proposed Depth 9982'V 14830'M		20. BLM/BIA Bond No. on file NMB000862 ESB000226	
21. Elevations (Show whether DF, KDB, RT, GL, etc.) 3421.6' GL		22. Approximate date work will start* 02/01/2015	
23. Estimated duration 35 days		24. Attachments	

The following, completed in accordance with the requirements of Onshore Oil and Gas Order No. 1, must be attached to this form:

- Well plat certified by a registered surveyor.
- A Drilling Plan.
- A Surface Use Plan (if the location is on National Forest System Lands, the SUPO must be filed with the appropriate Forest Service Office).
- Bond to cover the operations unless covered by an existing bond on file (see Item 20 above).
- Operator certification
- Such other site specific information and/or plans as may be required by the BLM.

25. Signature 	Name (Printed Typed) David Stewart	Date 5/7/14
Title Sr. Regulatory Advisor david_stewart@oxy.com		
Approved by (Signature) /s/George MacDoneli	Name (Printed Typed)	Date MAY 14 2015
Title FIELD MANAGER	Office CARLSBAD FIELD OFFICE	

Application approval does not warrant or certify that the applicant holds legal or equitable title to those rights in the subject lease which would entitle the applicant to conduct operations thereon.
Conditions of approval, if any, are attached.

APPROVAL FOR TWO YEARS

Title 18 U.S.C. Section 1001 and Title 43 U.S.C. Section 1212, make it a crime for any person knowingly and willfully to make to any department or agency of the United States any false, fictitious or fraudulent statements or representations as to any matter within its jurisdiction.

(Continued on page 2)

NM OIL CONSERVATION
ARTESIA DISTRICT

*(Instructions on page 2)

Carlsbad Controlled Water Basin

MAY 18 2015

RECEIVED

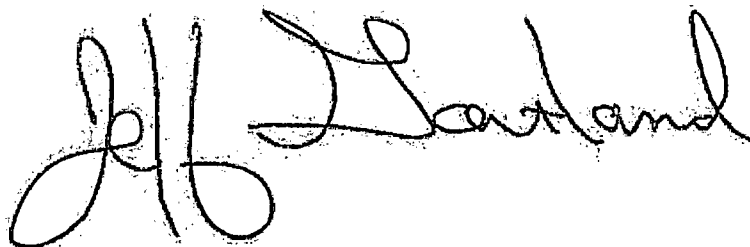
Approval Subject to General Requirements
& Special Stipulations AttachedSEE ATTACHED FOR
CONDITIONS OF APPROVAL

OPERATOR CERTIFICATION

I hereby certify that I, or someone under my direct supervision, have inspected the drill site and access route proposed herein; that I am familiar with the conditions that presently exist; that I have full knowledge of State and Federal laws applicable to this operation; that the statements made in this APD package are, to the best of my knowledge, true and correct; and that the work associated with the operations proposed herein will be performed in conformity with this APD package and the terms and conditions under which it is approved. I also certify that I, or the company I represent, am responsible for the operations conducted under this application. These statements are subject to the provisions of 18 U.S.C. 1001 for the filing of false statements. Executed this

7th day of May, 2014.

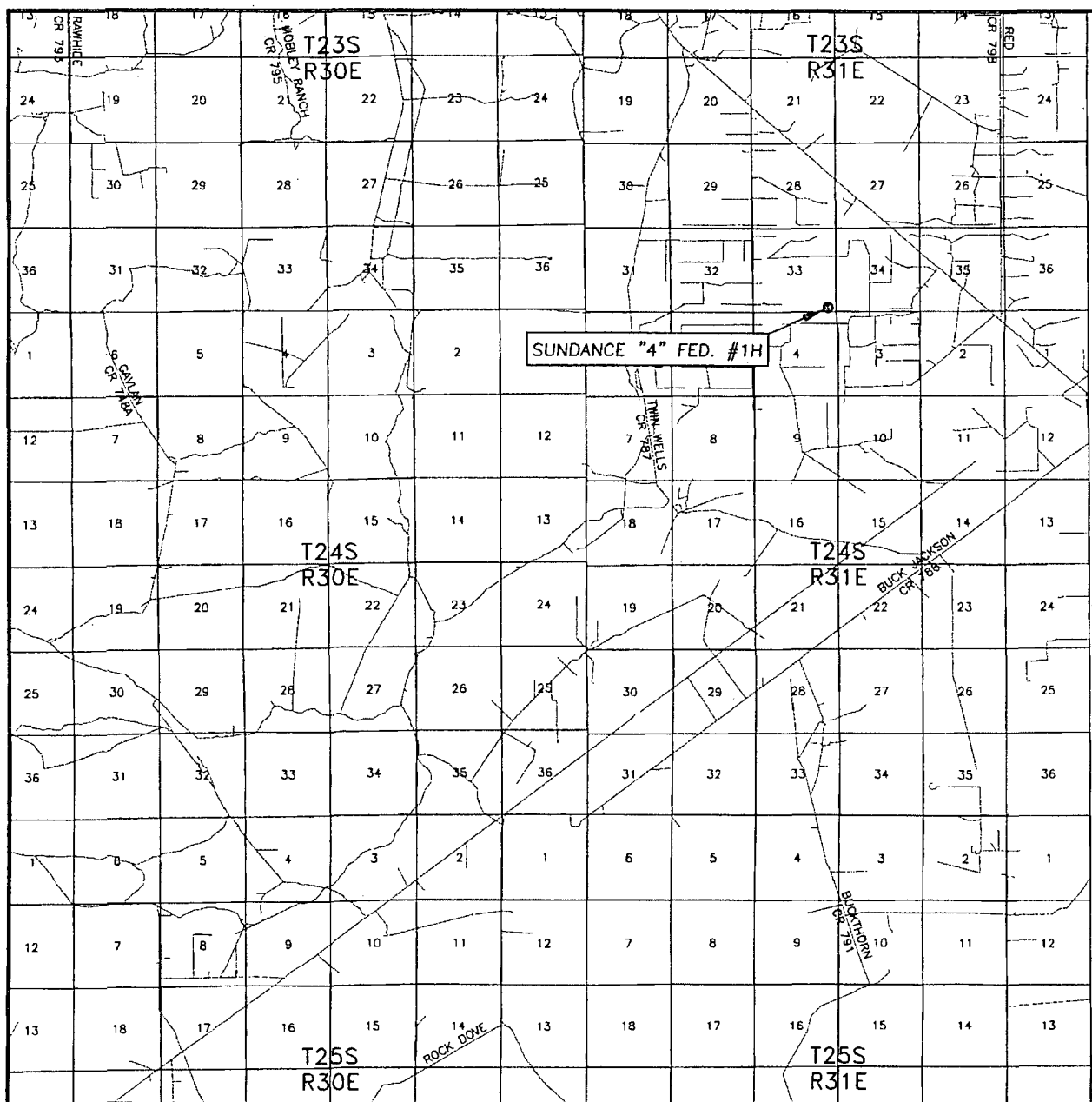
Name: Jeff Gartland
Position: Reservoir Management Team Leader
Address: 5 Greenway Plaza, Suite 110, Houston, TX 77046
Telephone: 713-552-8567
E-mail: (optional): jeff_gartland@oxy.com
Company: Occidental Permian LP / OXY USA Inc / OXY USA WTP LP
Field Representative (if not above signatory): Dusty Weaver
Address (if different from above): P.O. Box 50250 Midland, TX 79710
Telephone (if different from above): 432-685-5723
E-mail (if different from above): calvin_weaver@oxy.com



WFO 120927WZ-D (KA)

UM

VICINITY MAP

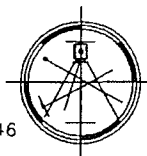


SEC. 33 TWP. 23-S RGE. 31-E
 SURVEY N.M.P.M.
 COUNTY EDDY
 DESCRIPTION 235' FSL & 500' FEL
 ELEVATION 3421.6'
 OPERATOR OXY USA INC.
 LEASE SUNDANCE "4" FED. #1H

SCALE: 1" = 2 MILES

Asel Surveying

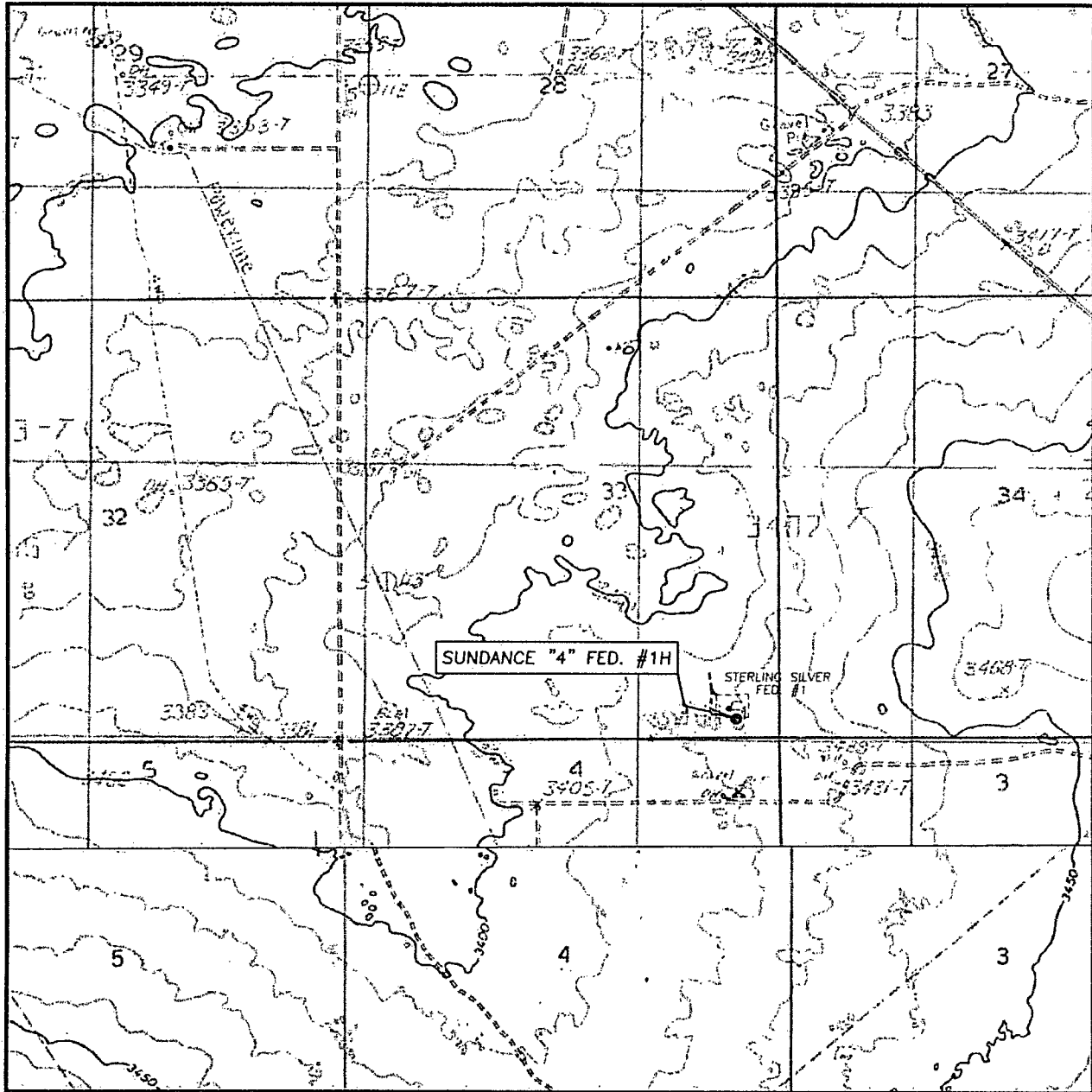
P.O. BOX 393 - 310 W. TAYLOR
 HOBBS, NEW MEXICO - 575-393-9146



DIRECTIONS BEGINNING AT THE INTERSECTION OF N.M. STATE HWY. #128 AND COUNTY ROAD #787 (TWIN WELLS ROAD), GO SOUTHEAST ON N.M. STATE HWY. #128 FOR 1.1 MILES, TURN RIGHT ON CALICHE ROAD AND GO SOUTH FOR 1.8 MILES, TURN LEFT AND GO EAST FOR 0.8 MILES, TURN RIGHT AND GO SOUTH FOR 0.6 MILES, TURN LEFT AND GO SOUTHEAST FOR 0.1 MILES TO LOCATION.

LVM

LOCATION VERIFICATION MAP



SCALE: 1" = 2000'

CONTOUR INTERVAL: 10'

SEC. 33 TWP. 23-S RGE. 31-E

SURVEY N.M.P.M.

COUNTY EDDY

DESCRIPTION 235' FSL & 500' FEL

ELEVATION 3421.6'

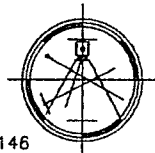
OPERATOR OXY USA INC.

LEASE SUNDANCE "4" FED. #1H

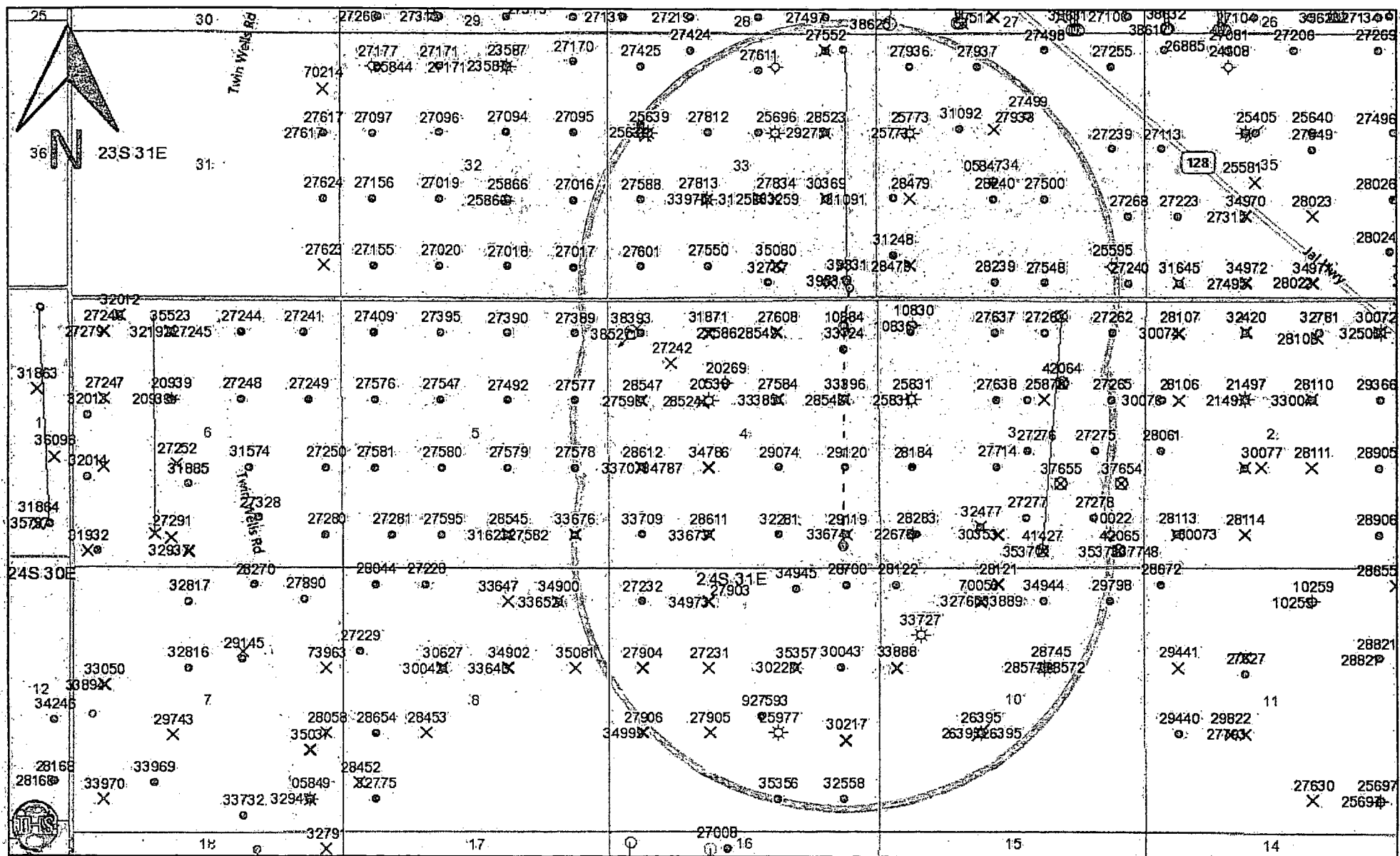
U.S.G.S. TOPOGRAPHIC MAP
LOS MEDANOS, N.M.

Asel Surveying

P.O. BOX 393 - 310 W. TAYLOR
HOBBS, NEW MEXICO - 575-393-9146

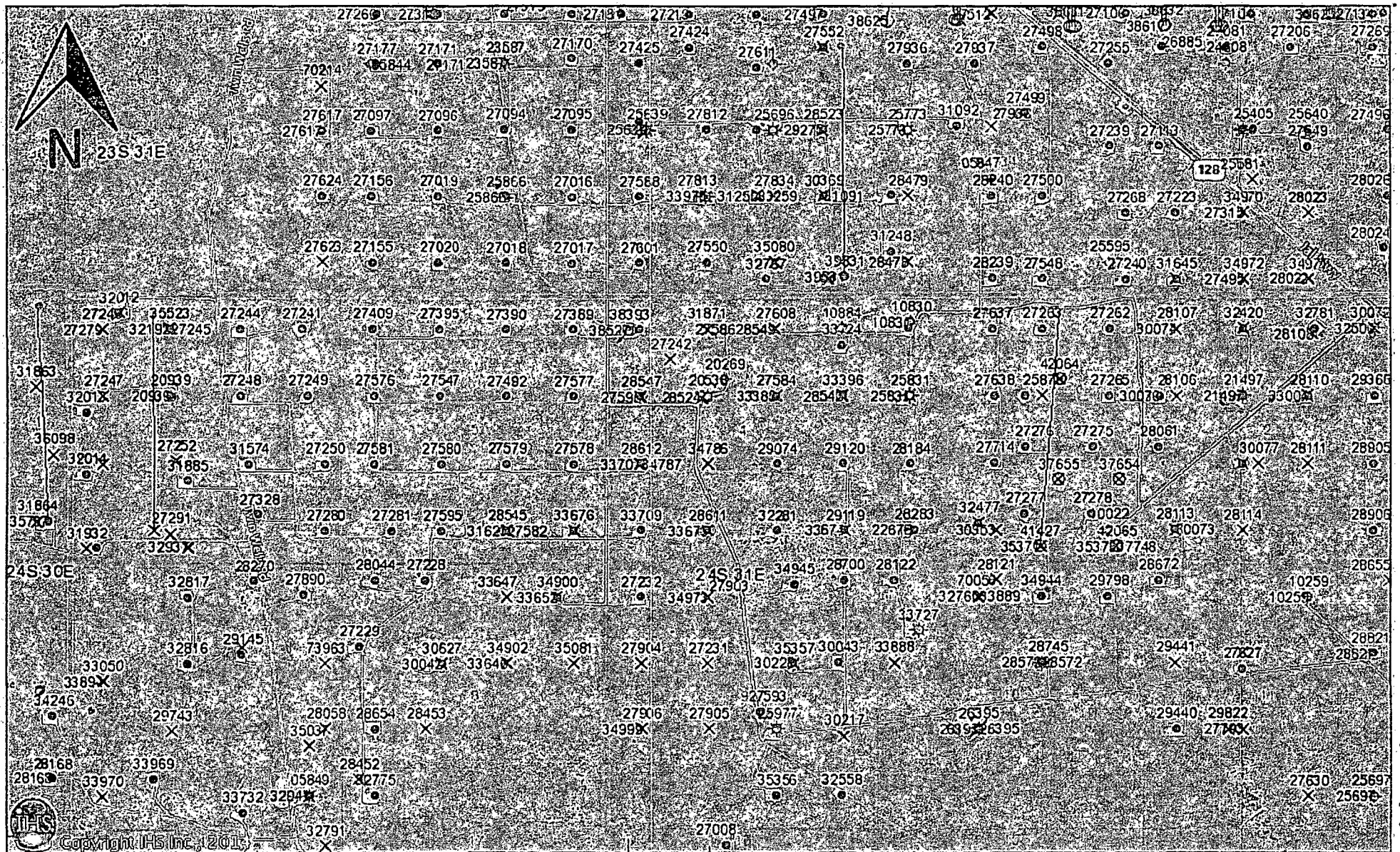


Sundance 4 Federal #1H - 1 Mile AOR



1 Mile Hor Plat

Sundance 4 Federal #1H - 9 Section AOR



Sterling Silver 33 CTB SWNE(G) Sec 33 T23S R31E

Sterling Silver 33 CTB

SUNDANCE 4 FED #1H PROPOSED FLOWLINE
SIZE: 4"
SURFACE/BURIED: SURFACE
DISTANCE: 4,950 FT
SERVICE: OIL/WATER/GAS
OPERATING PRESSURE: 125 PSI
NOTES: ROUTE WILL FOLLOW EXISTING ROADS

Sundance 4 Fed #1H



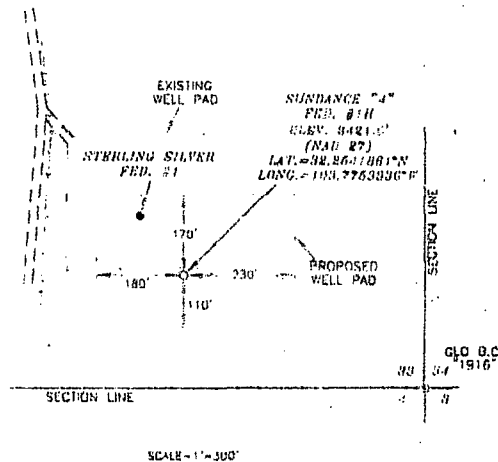
Sterling Silver 33 CTB

SUNDANCE 4 FED #1H PROPOSED FLOWLINE
SIZE: 4"
SURFACE/BURIED: SURFACE
DISTANCE: 4,950 FT
SERVICE: OIL/WATER/GAS
OPERATING PRESSURE: 125 PSI
NOTES: ROUTE WILL FOLLOW EXISTING ROADS

Sundance 4 Fed #1H

SECTION 33, TOWNSHIP 23 SOUTH, RANGE 31 EAST, N.M.P.M.,
SECTION 4, TOWNSHIP 24 SOUTH, RANGE 31 EAST, N.M.P.M.,
EDDY COUNTY NEW MEXICO

DRIVING DIRECTIONS:
BEGINNING AT THE INTERSECTION OF N.M.
STATE HWY. #128 AND COUNTY ROAD
#787 (TWIN WELLS ROAD), GO SOUTHEAST
ON N.M. STATE HWY. #128 FOR 1.1
MILES, TURN RIGHT ON CALICHE ROAD
AND GO SOUTH FOR 1.8 MILES, TURN
LEFT AND GO EAST FOR 0.8 MILES, TURN
RIGHT AND GO SOUTH FOR 0.6 MILES,
TURN LEFT AND GO SOUTHEAST FOR 0.1
MILES TO LOCATION.



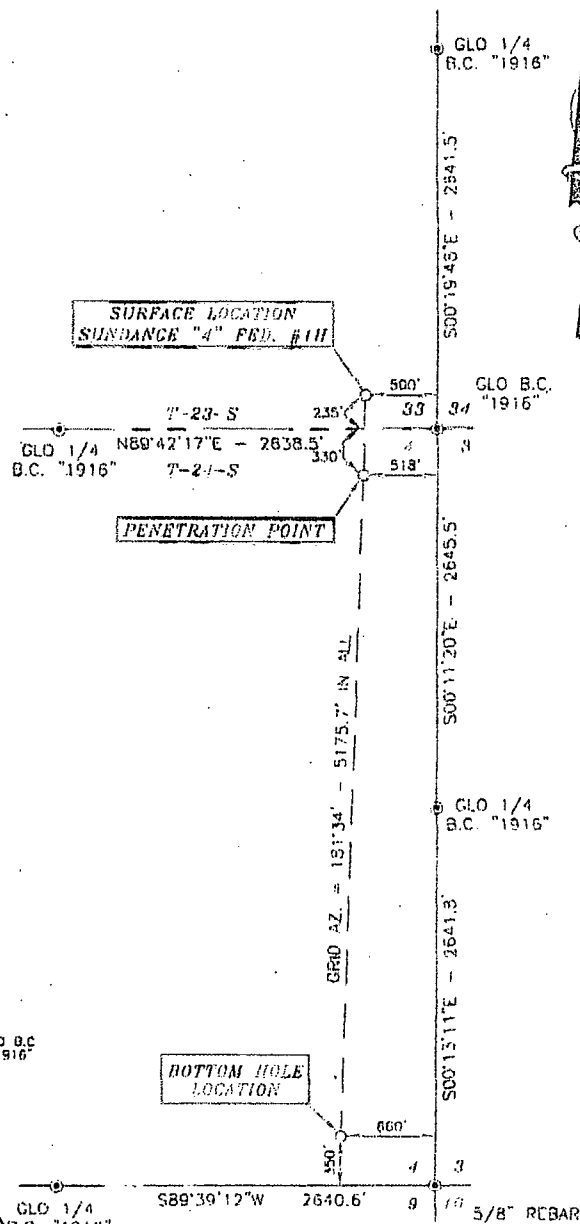
SURVEYORS CERTIFICATE

I, TERRY J. ASSEL, NEW MEXICO PROFESSIONAL SURVEYOR
NO. 15079, DO HEREBY CERTIFY THAT I CONDUCTED AND AM
RESPONSIBLE FOR THIS SURVEY, THAT THIS SURVEY IS
TRUE AND CORRECT TO THE BEST OF MY KNOWLEDGE AND
BELIEF, AND MEETS THE MINIMUM STANDARDS FOR
SURVEYING IN NEW MEXICO AS ADOPTED BY THE NEW
MEXICO STATE BOARD OF REGISTRATION FOR
PROFESSIONAL ENGINEERS AND SURVEYORS.

Terry J. Asel 4/24/2013
Terry J. Asel, N.M. R.P.L.S. No. 15079

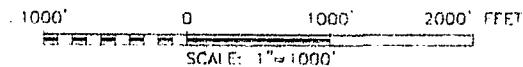
Asel Surveying

P.O. BOX 393 - 310 W. TAYLOR
HOBBS, NEW MEXICO 575 393 9146



LEGEND

● - DENOTES FOUND MONUMENT AS NOTED



OXY USA INC.

SUNDANCE "4" FED. #1H LOCATED AT
235' FSL & 500' FEL IN SECTION 33,
TOWNSHIP 23 SOUTH, RANGE 31 EAST,
N.M.P.M., EDDY COUNTY, NEW MEXICO

Survey Date: 09/27/12	Sheet 1 of 1 Sheets
W.O. Number: 120927WL-b (Rev. A)	Drawn By: KA Rev: A
Date: 04/23/13	120927WL-b Scale: 1"=1000'

Sterling Silver 33 CTB

47235 R31E SEC33

SUNDANCE 4 FED #1H PROPOSED FLOWLINE
SIZE: 4"
SURFACE/BURIED: SURFACE
DISTANCE: 4,950 FT
SERVICE: OIL/WATER/GAS
OPERATING PRESSURE: 125 PSI
NOTES: ROUTE WILL FOLLOW EXISTING ROADS

Sundance 4 Fed #1H

OXY USA Inc
Sundance 4 Federal #1H
APD Drilling Data

OPERATOR NAME / NUMBER: OXY USA INC 16696

LEASE NAME / NUMBER: Sundance 4 Federal #1H Federal Lease No. S-NMNM045236
BH-NMNM104730

STATE: NM **COUNTY:** Eddy

POOL NAME/NUMBER: Ingle Wells Bone Spring 33740

SURFACE LOCATION: 235 FSL 500 FEL SESE(P) Sec 33 T23S R31E
SL: LAT: 32.2541861N **LONG:** 103.7753336W **X:** 672499.2 **Y:** 456639.3 **NAD:** 27

PENETRATION POINT: 330 FNL 518 FEL NENE(A) Sec 4 T24S R31E
SL: LAT: 32.2526331N **LONG:** 103.7753930W **X:** 672483.8 **Y:** 456074.3 **NAD:** 27

BOTTOM HOLE LOCATION: 350 FSL 660 FEL SESE(P) Sec 4 T24S R31E
SL: LAT: 32.2399667N **LONG:** 103.7758776W **X:** 672357.9 **Y:** 451465.7 **NAD:** 27

APPROX GR ELEV: 3421.6' **EST KB ELEV:** 3445.6' (24' KB-GL)

1. GEOLOGIC NAME OF SURFACE FORMATION

a. Permian

2. ESTIMATED TOPS OF GEOLOGICAL MARKERS & DEPTHS OF ANTICIPATED FRESH WATER, OIL OR GAS

Formation	TVD - RKB	Expected Fluids
T. Rustler	511	--
T. Salt	840	--
B. Salt/Anhydrite	4250	--
T. Bell Canyon	4370	Form. Water
T. Cherry Canyon	5227	Oil/Gas
T. Brushy Canyon	6497	Oil/Gas
T. 1 st Bone Spring	8097	Oil/Gas
T. 2 nd Bone Spring	9627	Oil/Gas
Target 2 nd Bone Spring	9982	Oil/Gas
T. 3 rd Bone Spring	10250	Oil/Gas

Fresh water may be present above the Rustler. Potential fresh water zones will be protected by the surface casing.

LATERAL GREATEST PROJECTED TD: 14830' MD / 9982' TVD

OBJECTIVE: 2nd Bone Spring

3. CASING PROGRAM (ALL NEW CASING)

See COA

New Surface Casing ran in a 14.75" hole filled with 8.50 ppg mud

Hole Size (in)	Interval (ft)	OD (in)	Wt (ppf)	Grade	Conn	ID (in)	Tension (klb)	Burst (psi)	Collapse (psi)	Burst SF	Coll SF	Ten SF
14.75	540	11.75	47	J55	BTC	11	737	3070	1510	1.43	6.33	5.89

600'

New Intermediate Casing ran in a 10.625" hole filled with 10.2 ppg mud

Hole Size (in)	Interval (ft)	OD (in)	Wt (ppf)	Grade	Conn	ID (in)	Tension (klb)	Burst (psi)	Collapse (psi)	Burst SF	Coll SF	Ten SF
10.625	0-4350	8.625	32	J55	LTC	7.921*	417	3928	2533	1.43	3.95	1.86

New Production Casing ran in a 7.875" hole filled with 9.2 ppg mud

Hole Size (in)	Interval (ft)	OD (in)	Wt (ppf)	Grade	Conn	ID (in)	Tension (klb)	Burst (psi)	Collapse (psi)	Burst SF	Coll SF	Ten SF
7.875	0-14830	5.500	20	L80	BTC	4.778	466	8990	8830	1.22	1.88	1.65

*SPECIAL DRIFT TO 7.875"

Casing Design Assumptions:

Burst Loads

CSG Test (Surface)

- Internal: Displacement fluid + 70% CSG Burst rating
- External: Pore Pressure from section TD to surface

CSG Test (Intermediate)

- Internal: Displacement fluid + 70% CSG Burst rating
- External: Pore Pressure from the Intermediate hole TD to Surface CSG shoe and MW of the drilling mud that was in the hole when the CSG was run to surface

CSG Test (Production)

- Internal: Displacement fluid + 80% CSG Burst rating
- External: Pore Pressure from the well TD the Intermediate CSG shoe and MW of the drilling mud that was in the hole when the CSG was run to surface

Gas Kick (Surface/Intermediate)

- Internal: Gas Kick based on Pore Pressure or Fracture Gradient @ CSG shoe with a gas 0.115psi/ft Gas gradient to surface while drilling the next hole section (e.g. Gas Kick while drilling the production hole section is a burst load used to design the intermediate CSG)
- External: Pore Pressure from section TD to previous CSG shoe and MW of the drilling mud that was in the hole when the CSG was run to surface

Stimulation (Production)

- Internal: Displacement fluid + Max Frac treating pressure (not to exceed 80% CSG Burst rating)
- External: Pore Pressure from the well TD to the Intermediate CSG shoe and 8.5 ppg MWE to surface

Collapse Loads

Lost Circulation (Surface/Intermediate)

- Internal: Losses experienced while drilling the next hole section (e.g. losses while drilling the production hole section are used as a collapse load to design the intermediate CSG). After losses there will be a column of mud inside the CSG with an equivalent weight to the Pore Pressure of the lost circulation zone
- External: MW of the drilling mud that was in the hole when the CSG was run

Cementing (Surface/Intermediate/Production)

- Internal: Displacement Fluid
- External: Cement Slurries to TOC, MW to surface

Full Evacuation (Production)

- Internal: Atmospheric Pressure
- External: MW of the drilling mud that was in the hole when the CSG was run

Tension Loads

Running CSG (Surface/Intermediate/Production)

- Axial load of the buoyant weight of the string plus either 100 klb over-pull or string weight in air, whichever is less

Green Cement (Surface/Intermediate/Production)

- Axial load of the buoyant weight of the string plus the cement plug bump pressure (Final displacement pressure + 500 psi)

Burst, Collapse and Tensile SF are calculated using Landmark's Stress Check (Casing Design) software.

4. CEMENT PROGRAM:

Surface Interval

Interval	Amount sx	Ft of Fill	Type	Gal/Sk	PPG	Ft ³ /sk	24 Hr Comp
0' - 540' ^{600'} (165% Excess)	500	540	Premium Plus cement with 2% Calcium Chloride - Flake (Accelerator)	6.39	14.8	1.35	1726

Intermediate Interval

Interval	Amount sx	Ft of Fill	Type	Gal/Sk	PPG	Ft ³ /sk	24 Hr Comp
Lead: 0' - 3660' (165% Excess)	1030	3660	Halliburton Light Premium Plus Cement with 5% Salt (Accelerator), 0.4% HR-800 (Retarder)	9.84	12.9	1.85	771
Tail: 3660' - 4350' (165% Excess)	300	690	Premium Plus cement	6.34	14.8	1.33	1779

Production Casing

Interval	Amount sx	Ft of Fill	Type	Gal/Sk	PPG	Ft ³ /sk	24 Hr Comp
Lead: 0' - 9300' (100% Excess)	840	9300	TUNED LIGHT (TM) SYSTEM 3 lbm/sk Kol-Seal (Light Weight Additive), 0.125 lbm/sk Poly-E-Flake (Lost Circulation Additive), 0.2 lbm/sk HR-800 (Retarder)	14.04	10.2	2.94	947
Tail: 9300' - 14830' (40% Excess)	820	5530	Super H Cement, 0.5 % Halad(R)-344 (Low Fluid Loss Control), 0.4 % CFR-3 (Dispersant), 3 lbm/sk Salt (Salt), 0.2 % HR-800 (Retarder), 0.125 lbm/sk Poly-E-Flake (Lost Circulation Additive)	8.51	13.2	1.64	1275

DV TOOL SET AT 4450'

DV Tool will be used for contingency. If returns are not lost during primary cementing operation, DV cancellation plug will be run and 2nd stage cancelled. Contingency recipe for 2nd stage as follows:

Stage 2 Lead: 0' - 3850' (10% Excess)	380	3850	Halliburton Light Premium Plus cement with 3 lbm/sk Salt (Accelerator)	11.39	12.4	2.05	450 (500 psi in 29 hrs)
Stage 2 Tail: 3850' - 4450' (50% Excess)	100	600	94 lbm/sk Premium Plus Cement	6.34	14.8	1.33	1849

The volumes indicated above may be revised depending on caliper measurement.

5. DIRECTIONAL PLAN

Please see attached directional plan

6. PRESSURE CONTROL EQUIPMENT

Surface: 0' - ~~540'~~ ^{600'} None.

Intermediate and Production: 4350' MD/TVD - 14830' MD / 9982' TVD. Intermediate and Production hole will be drilled with a 13-5/8" 5M three ram stack with a 5M annular preventer and a 5M Choke Manifold.

- See COA
- a. All BOP's and associated equipment will be tested in accordance with Onshore Order #2 (250/5000 psi on rams for 10 minutes each and 250/3500 psi for 10 minutes for annular preventer, equal to 70% of working pressure) with a third party BOP testing service before drilling out the surface casing shoe. A Multibowl wellhead system will be used in this well therefore the BOPE test will cover the test requirements for the Intermediate and Production sections.
 - b. The Surface and Intermediate casings strings will be tested to 70% of their burst rating for 30 minutes. This will also test the seals of the lock down pins that hold the pack-off in place in the Multibowl wellhead system.
 - c. Pipe rams will be function tested every 24 hours and blind rams will be tested each time the drill pipe is out of the hole. These functional tests will be documented on the daily driller's log. A 2" kill line and 3" choke line will be accommodated on the drilling spool below the ram-type BOP.
 - d. The BOPE test will be repeated within 21 days of the original test, on the first trip, if drilling the intermediate or production section takes more time than planned.
 - e. Other accessory BOP equipment will include a floor safety valve, choke lines, and choke manifold having a 5000 psi working pressure rating and tested to 5000 psi.
 - f. The Operator also requests a variance to connect the BOP choke outlet to the choke manifold using a co-flex hose manufactured by Contitech Rubber Industrial KFT. It is a 3" ID x 35' flexible hose with a 10,000 psi working pressure. It has been tested to 15,000 psi and is built to API Spec 16C. Once the flex line is installed it will be tied down with safety clamps (certifications attached).
 - g. BOP & Choke manifold diagrams attached.
- See COA

7. MUD PROGRAM:

See COA

Depth	Mud Wt ppg	Vis Sec	Fluid Loss	Type System
0' - 540' ^{600'}	8.5	28 - 38	NC	Fresh Water / Spud Mud
540' - 4350'	10.2	28 - 32	NC	NaCl Brine
4350' - 9000'	9.0	28 - 32	NC	Cut Brine / Sweeps
9000' - 14830'	9.0-9.2	30 - 40	< 20	Cut Brine/Starch

Remarks: Pump high viscosity sweeps as needed for hole cleaning. The mud system will be monitored visually/manually as well as with an electronic PVT. The necessary mud products for additional weight and fluid loss control will be on location at all times. Appropriately weighted mud will be used to isolate potential gas, oil, and water zones until such time as casing can be cemented into place for zonal isolation.

8. CLOSED LOOP SYSTEM

A closed loop system will be utilized, consisting of above ground steel tanks and haul-off bins. Liquids, drilling fluids and cuttings will be disposed of at an approved facility.

9. AUXILIARY WELL CONTROL AND MONITORING EQUIPMENT

- a. A full opening drill pipe stabbing valve having the appropriate connections will be on the rig floor unobstructed and readily accessible at all times.
 - b. Hydrogen Sulfide detection equipment will be in operation after drilling out the surface casing shoe until the production casing is cemented. Breathing equipment will be on location upon drilling the surface casing shoe until total depth is reached. **If Hydrogen Sulfide is encountered, measured amounts and formations will be reported to the BLM.**
- See COA

10. POTENTIAL HAZARDS

- See COA*
- a. H2S detection equipment will be in operation after drilling out the surface casing shoe until the production casing has been cemented. Breathing equipment will be on location from drilling out the surface shoe until production casing is cemented. If H2S is encountered the operator will comply with Onshore Order #6 and report to BLM.
 - b. No abnormal temperatures or pressures are anticipated. The highest anticipated pressure gradient is **0.46 psi/ft**. Maximum anticipated bottom hole pressure is **between 4500 and 4600 psi**.
 - c. All personnel will be familiar with all aspects of safe operation of equipment being used to drill this well. Adequate flare lines will be installed off the mud/gas separator where gas may be flared safely.

11. ANTICIPATED STARTING DATE AND DURATION OF OPERATIONS

Road and location construction will begin after the BLM has approved the APD. Anticipated spud date will be as soon as possible after BLM approval and as soon as a rig will be available. Move in operations and drilling is expected to take 35 days. If production casing is run, then an additional 30 days will be needed to complete the well and construct surface facilities and/or lay flow lines in order to place well on production.

12. WIRELINE LOGGING / MUD LOGGING / LWD

- a. Wireline logging: None
- b. Mud loggers to be rigged up from intermediate casing shoe to TD
- c. Acquire GR while drilling, from KOP to TD

COMPANY PERSONNEL:

<u>Name</u>	<u>Title</u>	<u>Office Phone</u>	<u>Mobile Phone</u>
Chan Tyson	Drilling Engineer	(713)613-6668	(832) 564-6454
Sebastian Millan	Drilling Engineer Supervisor	(713)350-4950	(832) 528-3268
Roger Allen	Drilling Superintendent	(713)215-7617	(281) 682-3919
Oscar Quintero	Drilling Manager	(713)985-6343	(713) 689-4946

DP-1



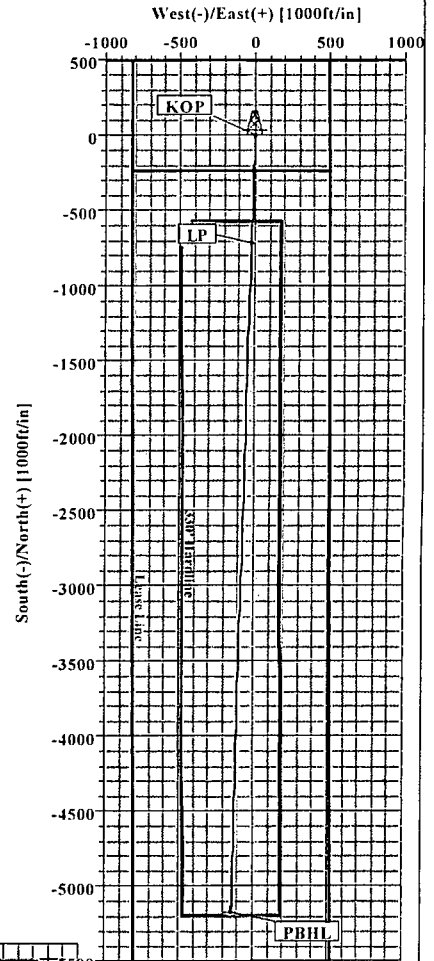
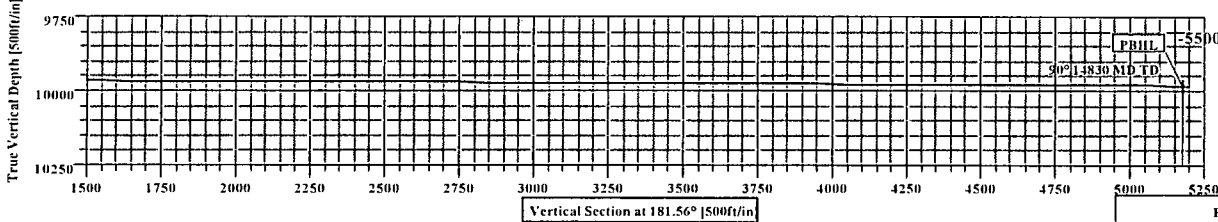
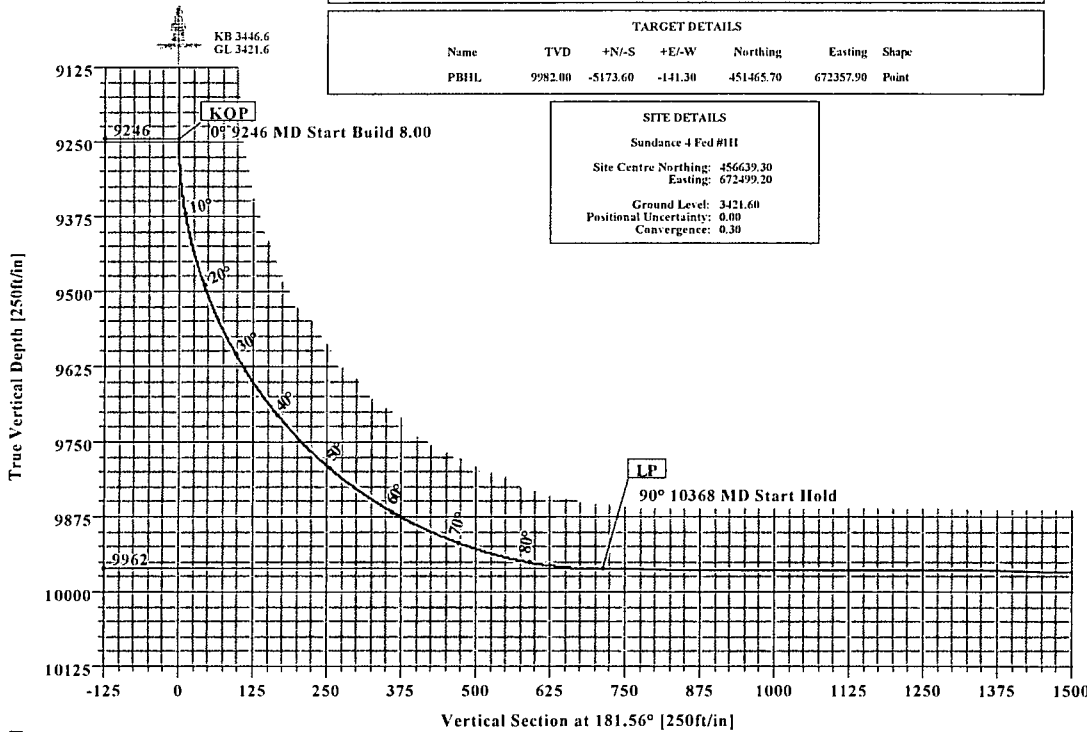
Sundance 4 Fed #1H
Eddy Co, New Mexico

SECTION DETAILS										
Sec	MD	Inc	Azi	TVD	+N/-S	+E/-W	DLeg	TFace	VSec	Target
1	0.00	0.00	181.56	0.00	0.00	0.00	0.00	0.00	0.00	
2	9245.81	0.00	181.56	9245.81	0.00	0.00	0.00	0.00	0.00	
3	10367.60	89.74	181.56	9962.00	-712.72	-19.47	8.00	181.56	712.99	
4	14830.19	89.74	181.56	9982.00	-5173.60	-141.30	0.00	0.00	5175.53	PBHL

WELL DETAILS						
Name	+N/-S	+E/-W	Northing	Easting	Latitude	Longitude
Sundance 4 Fed #1H	0.00	0.00	456639.30	672499.20	32°15'15.070N	103°46'31.202W

TARGET DETAILS						
Name	TVD	+N/-S	+E/-W	Northing	Easting	Shape
PBHL	9982.00	-5173.60	-141.30	451465.70	672357.90	Point

SITE DETAILS	
Sundance 4 Fed #1H	
Site Centre Northing:	456639.30
Easting:	672499.20
Ground Level:	3421.60
Positional Uncertainty:	0.00
Convergence:	0.30



Weatherford

Plan: Plan #2 (Sundance 4 Fed #1H/I)
Created By: Patrick Rudolph Date: 9/4/2013



Weatherford International Ltd.

WFT Plan Report - X & Y's



Weatherford

DP-2

Company: Occidental Permian Ltd. Date: 9/4/2013 Time: 15:58:01 Page: 1
 Field: Eddy Co, NM (Nad 27) Co-ordinate(N/E) Reference: Well: Sundance 4 Fed #1H, Grid North
 Site: Sundance 4 Fed #1H Vertical (TVD) Reference: SITE 3446.6
 Well: Sundance 4 Fed #1H Section (VS) Reference: Well (0.00N,0.00E,181.56Azi)
 Wellpath: 1 Survey Calculation Method: Minimum Curvature Db: Sybase

Plan: Plan #2 Date Composed: 9/4/2013
 Principal: Yes Version: 1
 Tied-to: From Surface

Site: Sundance 4 Fed #1H

Site Position: Northing: 456639.30 ft Latitude: 32 15 15.070 N
 From: Map Easting: 672499.20 ft Longitude: 103 46 31.202 W
 Position Uncertainty: 0.00 ft North Reference: Grid
 Ground Level: 3421.60 ft Grid Convergence: 0.30 deg

Well: Sundance 4 Fed #1H Slot Name:
 Well Position: +N/-S 0.00 ft Northing: 456639.30 ft Latitude: 32 15 15.070 N
 +E/-W 0.00 ft Easting: 672499.20 ft Longitude: 103 46 31.202 W
 Position Uncertainty: 0.00 ft

Wellpath: 1 Drilled From: Surface
 Current Datum: SITE Tie-on Depth: 0.00 ft
 Magnetic Data: 4/1/2014 Height 3446.60 ft Above System Datum: Mean Sea Level
 Field Strength: 48358 nT Declination: 7.34 deg
 Vertical Section: Depth From (TVD) +N/-S +E/-W Mag Dip Angle: 60.11 deg
 ft ft ft Direction deg
 0.00 0.00 0.00 181.56

Plan Section Information

MD ft	Incl deg	Azim deg	TVD ft	+N/-S ft	+E/-W ft	DLS deg/100ft	Build deg/100ft	Turn deg/100ft	TFO deg	Target
0.00	0.00	181.56	0.00	0.00	0.00	0.00	0.00	0.00	0.00	
9245.81	0.00	181.56	9245.81	0.00	0.00	0.00	0.00	0.00	0.00	
10367.60	89.74	181.56	9962.00	-712.72	-19.47	8.00	8.00	0.00	181.56	
14830.19	89.74	181.56	9982.00	-5173.60	-141.30	0.00	0.00	0.00	0.00	PBHL

Survey

MD ft	Incl deg	Azim deg	TVD ft	N/S ft	E/W ft	VS ft	DLS deg/100ft	MapN ft	MapE ft	Comment
9200.00	0.00	181.56	9200.00	0.00	0.00	0.00	0.00	456639.30	672499.20	
9245.81	0.00	181.56	9245.81	0.00	0.00	0.00	0.00	456639.30	672499.20	KOP
9250.00	0.34	181.56	9250.00	-0.01	0.00	0.01	8.00	456639.29	672499.20	
9300.00	4.34	181.56	9299.95	-2.05	-0.06	2.05	8.00	456637.25	672499.14	
9350.00	8.34	181.56	9349.63	-7.56	-0.21	7.57	8.00	456631.74	672498.99	
9400.00	12.34	181.56	9398.81	-16.53	-0.45	16.53	8.00	456622.77	672498.75	
9450.00	16.34	181.56	9447.24	-28.90	-0.79	28.91	8.00	456610.40	672498.41	
9500.00	20.34	181.56	9494.70	-44.62	-1.22	44.64	8.00	456594.68	672497.98	
9550.00	24.34	181.56	9540.94	-63.61	-1.74	63.63	8.00	456575.69	672497.46	
9600.00	28.34	181.56	9585.74	-85.78	-2.34	85.81	8.00	456553.52	672496.86	
9650.00	32.34	181.56	9628.88	-111.02	-3.03	111.06	8.00	456528.28	672496.17	
9700.00	36.34	181.56	9670.16	-139.20	-3.80	139.26	8.00	456500.10	672495.40	
9750.00	40.34	181.56	9709.37	-170.20	-4.65	170.26	8.00	456469.10	672494.55	
9800.00	44.34	181.56	9746.33	-203.85	-5.57	203.93	8.00	456435.45	672493.63	
9850.00	48.34	181.56	9780.84	-240.00	-6.55	240.09	8.00	456399.30	672492.65	
9900.00	52.34	181.56	9812.75	-278.47	-7.61	278.57	8.00	456360.83	672491.59	
9950.00	56.34	181.56	9841.90	-319.07	-8.71	319.19	8.00	456320.23	672490.49	
10000.00	60.34	181.56	9868.14	-361.60	-9.88	361.73	8.00	456277.70	672489.32	
10050.00	64.34	181.56	9891.35	-405.86	-11.08	406.01	8.00	456233.44	672488.12	
10100.00	68.34	181.56	9911.41	-451.63	-12.33	451.80	8.00	456187.67	672486.87	
10150.00	72.34	181.56	9928.24	-498.68	-13.62	498.87	8.00	456140.62	672485.58	
10200.00	76.34	181.56	9941.73	-546.80	-14.93	547.00	8.00	456092.50	672484.27	
10250.00	80.34	181.56	9951.84	-595.74	-16.27	595.96	8.00	456043.56	672482.93	



Weatherford International Ltd.

WFT Plan Report - X & Y's



Weatherford

DP-3

Company: Occidental Permian Ltd.	Date: 9/4/2013	Time: 15:58:01	Page: 2
Field: Eddy Co, NM (Nad 27)	Co-ordinate(NE) Reference:	Well: Sundance 4 Fed #1H, Grid North	
Site: Sundance 4 Fed #1H	Vertical (TVD) Reference:	SITE 3446.6	
Well: Sundance 4 Fed #1H	Section (VS) Reference:	Well (0.00N, 0.00E, 181.56Azi)	
Wellpath: 1	Survey Calculation Method:	Minimum Curvature	Db: Sybase

Survey

MD ft	Incl deg	Azim deg	TVD ft	N/S ft	E/W ft	VS ft	DLS deg/100ft	MapN ft	MapE ft	Comment
10300.00	84.34	181.56	9958.51	-645.26	-17.62	645.50	8.00	455994.04	672481.58	
10350.00	88.34	181.56	9961.70	-695.13	-18.99	695.39	8.00	455944.17	672480.21	
10367.60	89.74	181.56	9962.00	-712.72	-19.47	712.99	8.00	455926.58	672479.73	LP
10400.00	89.74	181.56	9962.14	-745.11	-20.35	745.39	0.00	455894.19	672478.85	
10500.00	89.74	181.56	9962.59	-845.07	-23.08	845.39	0.00	455794.23	672476.12	
10600.00	89.74	181.56	9963.04	-945.03	-25.81	945.39	0.00	455694.27	672473.39	
10700.00	89.74	181.56	9963.49	-1045.00	-28.54	1045.39	0.00	455594.30	672470.66	
10800.00	89.74	181.56	9963.94	-1144.96	-31.27	1145.38	0.00	455494.34	672467.93	
10900.00	89.74	181.56	9964.38	-1244.92	-34.00	1245.38	0.00	455394.38	672465.20	
11000.00	89.74	181.56	9964.83	-1344.88	-36.73	1345.38	0.00	455294.42	672462.47	
11100.00	89.74	181.56	9965.28	-1444.84	-39.46	1445.38	0.00	455194.46	672459.74	
11200.00	89.74	181.56	9965.73	-1544.80	-42.19	1545.38	0.00	455094.50	672457.01	
11300.00	89.74	181.56	9966.18	-1644.77	-44.92	1645.38	0.00	454994.53	672454.28	
11400.00	89.74	181.56	9966.63	-1744.73	-47.65	1745.38	0.00	454894.57	672451.55	
11500.00	89.74	181.56	9967.07	-1844.69	-50.38	1845.38	0.00	454794.61	672448.82	
11600.00	89.74	181.56	9967.52	-1944.65	-53.11	1945.38	0.00	454694.65	672446.09	
11700.00	89.74	181.56	9967.97	-2044.61	-55.84	2045.38	0.00	454594.69	672443.36	
11800.00	89.74	181.56	9968.42	-2144.57	-58.57	2145.37	0.00	454494.73	672440.63	
11900.00	89.74	181.56	9968.87	-2244.54	-61.30	2245.37	0.00	454394.76	672437.90	
12000.00	89.74	181.56	9969.32	-2344.50	-64.03	2345.37	0.00	454294.80	672435.17	
12100.00	89.74	181.56	9969.76	-2444.46	-66.76	2445.37	0.00	454194.84	672432.44	
12200.00	89.74	181.56	9970.21	-2544.42	-69.49	2545.37	0.00	454094.88	672429.71	
12300.00	89.74	181.56	9970.66	-2644.38	-72.22	2645.37	0.00	453994.92	672426.98	
12400.00	89.74	181.56	9971.11	-2744.34	-74.95	2745.37	0.00	453894.96	672424.25	
12500.00	89.74	181.56	9971.56	-2844.31	-77.68	2845.37	0.00	453794.99	672421.52	
12600.00	89.74	181.56	9972.00	-2944.27	-80.41	2945.37	0.00	453695.03	672418.79	
12700.00	89.74	181.56	9972.45	-3044.23	-83.14	3045.37	0.00	453595.07	672416.06	
12800.00	89.74	181.56	9972.90	-3144.19	-85.87	3145.36	0.00	453495.11	672413.33	
12900.00	89.74	181.56	9973.35	-3244.15	-88.60	3245.36	0.00	453395.15	672410.60	
13000.00	89.74	181.56	9973.80	-3344.12	-91.33	3345.36	0.00	453295.18	672407.87	
13100.00	89.74	181.56	9974.25	-3444.08	-94.06	3445.36	0.00	453195.22	672405.14	
13200.00	89.74	181.56	9974.69	-3544.04	-96.79	3545.36	0.00	453095.26	672402.41	
13300.00	89.74	181.56	9975.14	-3644.00	-99.52	3645.36	0.00	452995.30	672399.68	
13400.00	89.74	181.56	9975.59	-3743.96	-102.25	3745.36	0.00	452895.34	672396.95	
13500.00	89.74	181.56	9976.04	-3843.92	-104.98	3845.36	0.00	452795.38	672394.22	
13600.00	89.74	181.56	9976.49	-3943.89	-107.71	3945.36	0.00	452695.41	672391.49	
13700.00	89.74	181.56	9976.93	-4043.85	-110.44	4045.36	0.00	452595.45	672388.76	
13800.00	89.74	181.56	9977.38	-4143.81	-113.17	4145.35	0.00	452495.49	672386.03	
13900.00	89.74	181.56	9977.83	-4243.77	-115.90	4245.35	0.00	452395.53	672383.30	
14000.00	89.74	181.56	9978.28	-4343.73	-118.63	4345.35	0.00	452295.57	672380.57	
14100.00	89.74	181.56	9978.73	-4443.69	-121.37	4445.35	0.00	452195.61	672377.83	
14200.00	89.74	181.56	9979.18	-4543.66	-124.10	4545.35	0.00	452095.64	672375.10	
14300.00	89.74	181.56	9979.62	-4643.62	-126.83	4645.35	0.00	451995.68	672372.37	
14400.00	89.74	181.56	9980.07	-4743.58	-129.56	4745.35	0.00	451895.72	672369.64	
14500.00	89.74	181.56	9980.52	-4843.54	-132.29	4845.35	0.00	451795.76	672366.91	
14600.00	89.74	181.56	9980.97	-4943.50	-135.02	4945.35	0.00	451695.80	672364.18	
14700.00	89.74	181.56	9981.42	-5043.46	-137.75	5045.35	0.00	451595.84	672361.45	
14800.00	89.74	181.56	9981.86	-5143.43	-140.48	5145.34	0.00	451495.87	672358.72	
14830.19	89.74	181.56	9982.00	-5173.60	-141.30	5175.53	0.00	451465.70	672357.90	PBHL



Weatherford International Ltd.

WFT Plan Report - X & Y's



Weatherford

DP-4

Company:	Occidental Permian Ltd.	Date:	9/4/2013	Time:	15:58:01	Page:	3
Field:	Eddy Co, NM (Nad 27)	Co-ordinate(NE) Reference:	Well: Sundance 4 Fed #1H, Grid North:				
Site:	Sundance 4 Fed #1H	Vertical (TVD) Reference:	SITE 3446.6				
Well:	Sundance 4 Fed #1H	Section (VS) Reference:	Well (0.00N;0.00E;181.56Azi)				
Wellpath:	1	Survey Calculation Method:	Minimum Curvature			Db:	Sybase

Targets

Name	Description Dip.	Dir.	TVD ft	+N/-S ft	+E/-W ft	Map Northing ft	Map Easting ft	<--- Latitude ---> Deg Min Sec	<--- Longitude ---> Deg Min Sec
PBHL			9982.00	-5173.60	-141.30	451465.70	672357.90	32 14 23.880 N	103 46 33.160 W

Casing Points

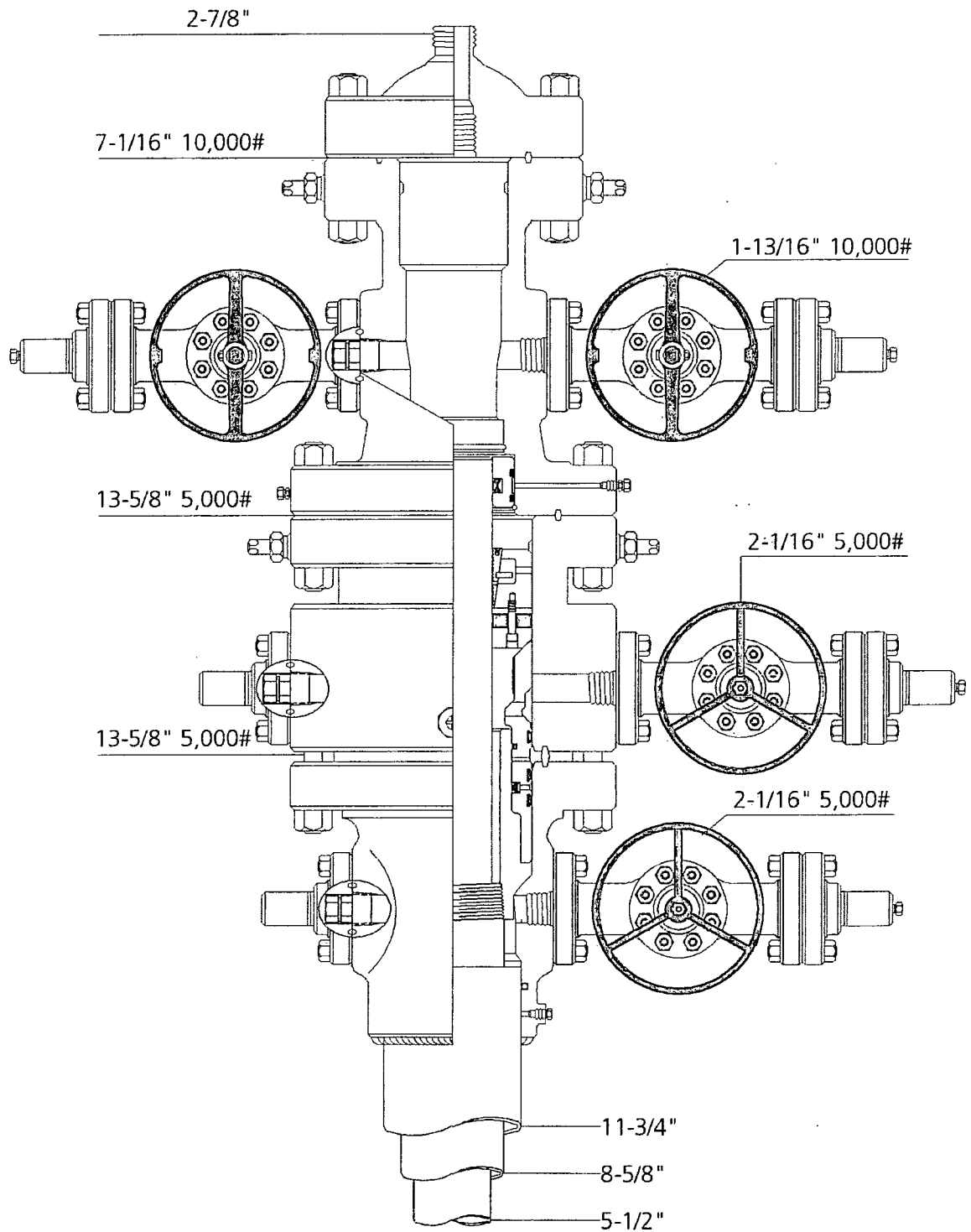
MD	TVD	Diameter	Hole Size	Name

Annotation

MD ft	TVD ft	
9245.81	9245.81	KOP
10367.60	9962.00	LP
14830.18	9982.00	PBHL

Formations

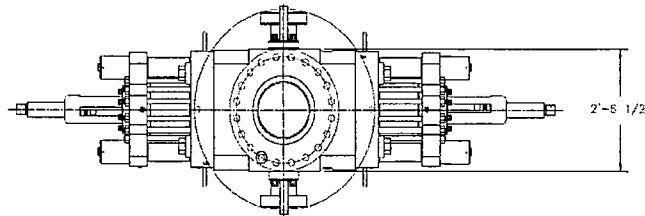
MD	TVD	Formations	Lithology	Dip Angle	Dip Direction



Permian Basin
MBS



Name: Jeanette	Date: 1-31-13	Working Pressure:	# 21073221
----------------	---------------	-------------------	------------



LEGEND

- ① - 4 1/16"-10M FLANGED END GATE VALVE
- ② - 4 1/16"-10M FLANGED END GATE VALVE WITH DOUBLE ACTING HYDRAULIC ACTUATOR
- ③ - 2 1/16"-10M FLANGED END GATE VALVE
- ④ - 2 1/16"-10M FLANGED END CHECK VALVE
- ⑤ - DOUBLE STUDDED ADAPTER

SEE LIFT LUG DETAIL

SHAFFER BOLTED-COVER SPHERICAL ANNULAR PREVENTER, (API 16A MONOGRAMMED, 13 5/8"-5M WP), 10M BOTTOM FLANGE x 5M STUDDED TOP (WEIGHT = 14,300 LBS WITH SHAFFER API 16A HOT OIL RESISTANT AGR/LONTRILE ELEMENT)

CAVERON UM DOUBLE RAM-TYPE PREVENTER (API 16A MONOGRAMMED, 13 5/8"-10M WP), WITH 5" CAMERON PIPE RAMS (CAMRAM FRONT PACKERS & TOP SEALS) IN TOP CAVITY AND CAMERON DS SHEARING BLIND RAMS IN BOTTOM CAVITY. BOTTOM FLANGE x STUDDED TOP (WEIGHT = 21,100 LBS WITH RAMS)

13 5/8"-10M WP CAMERON DRILLING SPOOL (API 16A MONOGRAMMED), STUDDED TOP x FLANGED BOTTOM, WITH 4 1/16"-10M WP FLANGED OUTLETS (WEIGHT APPROXIMATELY 6,000 LBS)

CAVERON UM SINGLE RAM-TYPE PREVENTER (API 16A MONOGRAMMED, 13 5/8"-10M WP), WITH 5" CAMERON PIPE RAMS (CAMRAM FRONT PACKERS & TOP SEALS) BOTTOM FLANGE x STUDDED TOP (WEIGHT = 10,900 LBS)

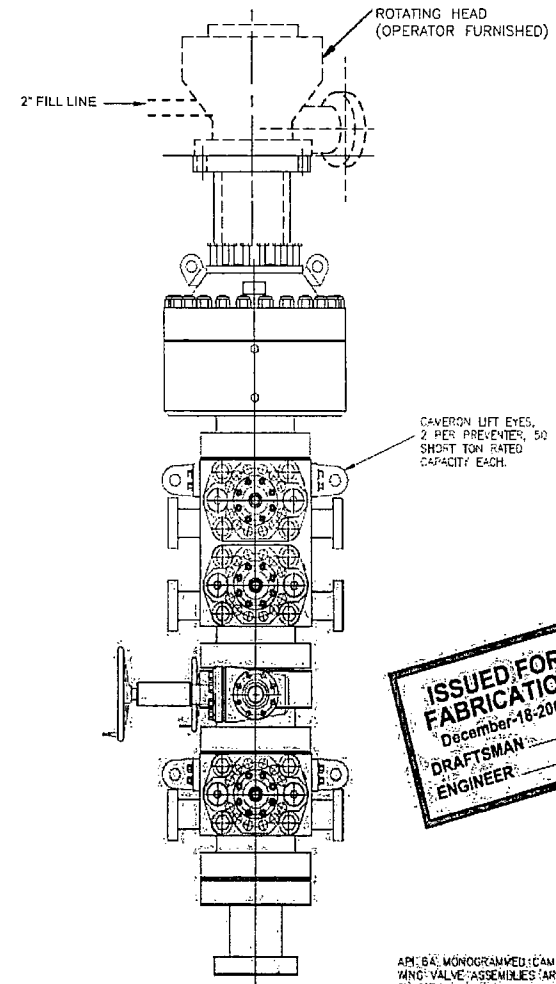
H&P FURNISHED
13 5/8"-10M x 13 5/8"-5M
ADAPTER SPOOL 2'-0" LONG

11'-1 5/8" CLOSED

12'-5 3/8" OPERATING

16'-0" OPENED

13 5/8 - 10M BOP STACK WITH 13 5/8 - 5M ANNULAR



CAVERON LIFT EYES,
2 PER PREVENTER, 50
SHORT TON RATED
CAPACITY EACH

**ISSUED FOR
FABRICATION**
December-18-2007
**DRAFTSMAN
ENGINEER**

API 16A MONOGRAMMED CAMERON CHOKE AND KILL
RING VALVE ASSEMBLIES ARE NOT SHOWN FOR
CLARITY

WEIGHTS DO NOT INCLUDE HOSES, ADAPTER SPOOLS
OR QUICK-CONNECT FITTINGS

PROPRIETARY

THIS DRAWING AND THE IDEAS AND INFORMATION INCLUDED
IN THIS DRAWING ARE PROPRIETARY AND ARE NOT TO BE
REPRODUCED, DISTRIBUTED OR DISCLOSED IN ANY MANNER
WITHOUT THE PRIOR WRITTEN CONSENT OF A QUALIFYING
OFFICER OF HELMERICH & PAYNE INTERNATIONAL DRILLING CO.

HELMERICH & PAYNE
INTERNATIONAL DRILLING CO.

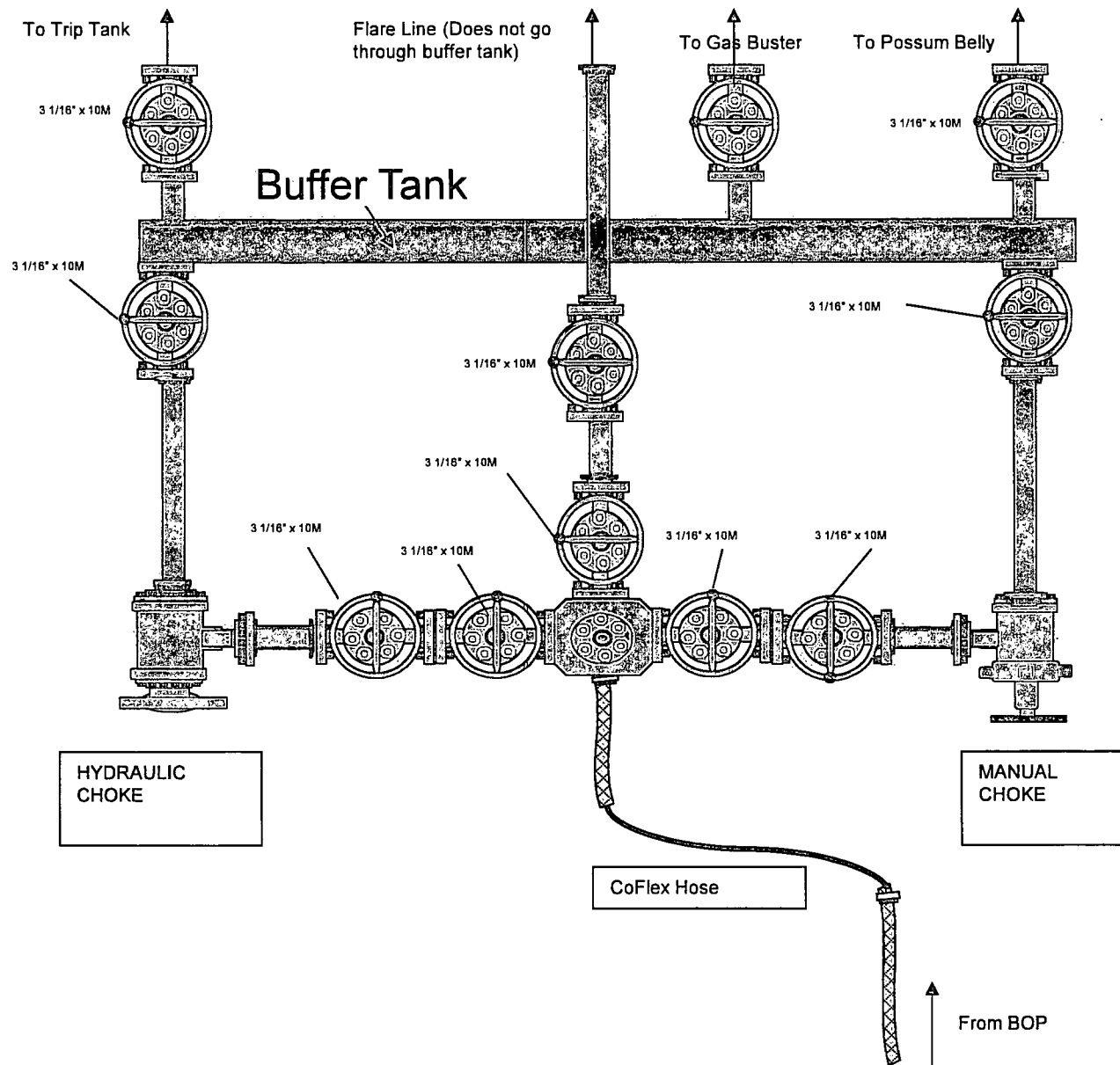
13 5/8"-10M BOP-3 RAM STACK
"FLEXRIGS"

CUSTOMER: H&P
PROJECT: FLEXRIGS
DRAWN: JMTS DATE: 8-8-07 DWG. NO.:
SCALE: 3/4"=1' SHEET: 1 OF 3 210-P1-07 E

REV	DATE	DESCRIPTION	BY
1	12/18/07	ADDED SHEET TO	JAV
2	4-10-07	CAVERON UM DOUBLE STUDDED ADAPTER VALVES 1, 2, 3 AND 4G CHECK VALVE ADDED	AVG
3	4-24-07	ADDED TO SPACER ADAPTER SPOOL	AVG
4	5-27-07	ADDED ADAPTER SPOOL	VAL
5	8-15-07	CORRECTED BOP STACK	VAL

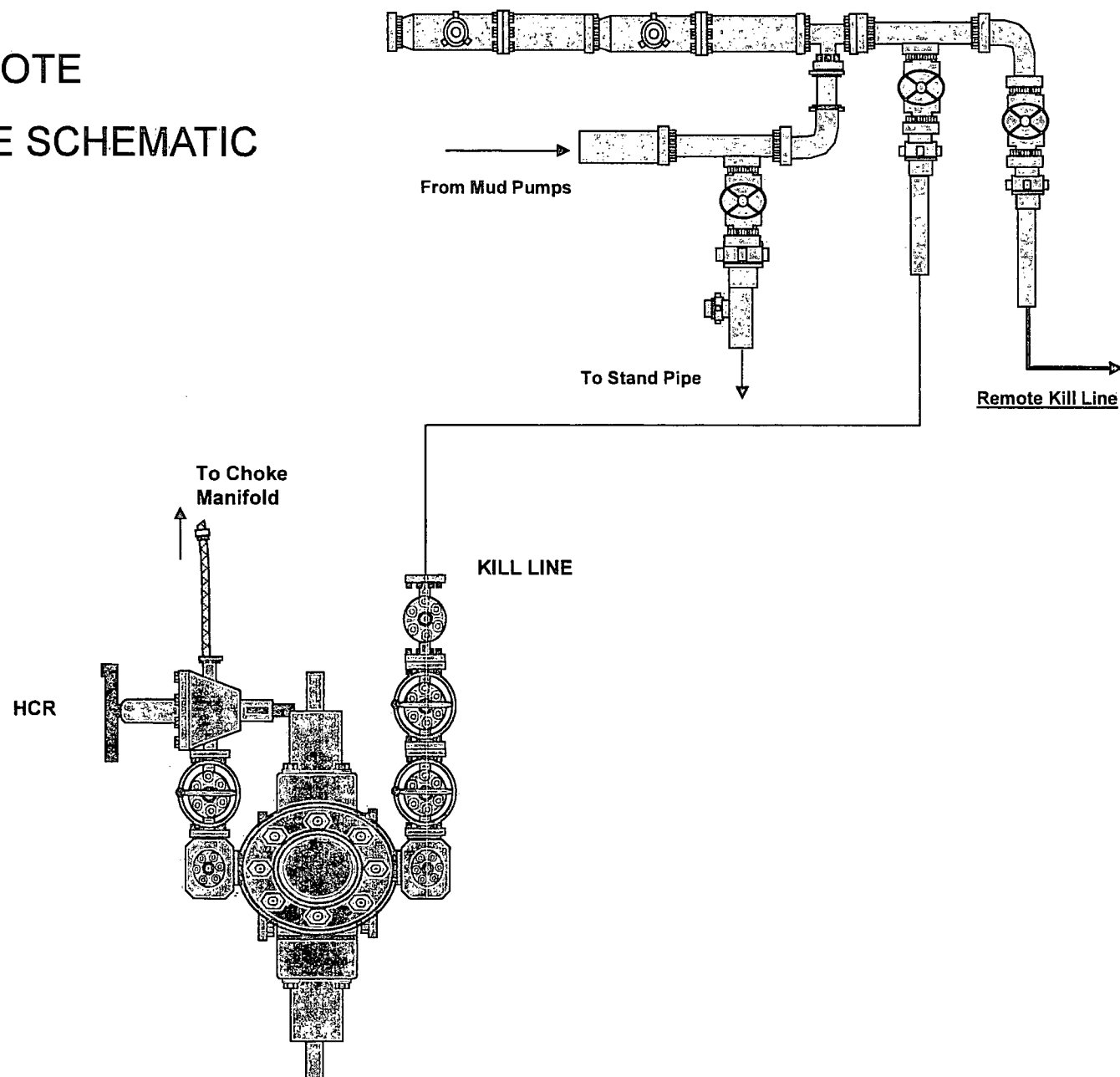
BOP-1

FLEX3 STD CHOKE MANIFOLD (COMPREHENSIVE)

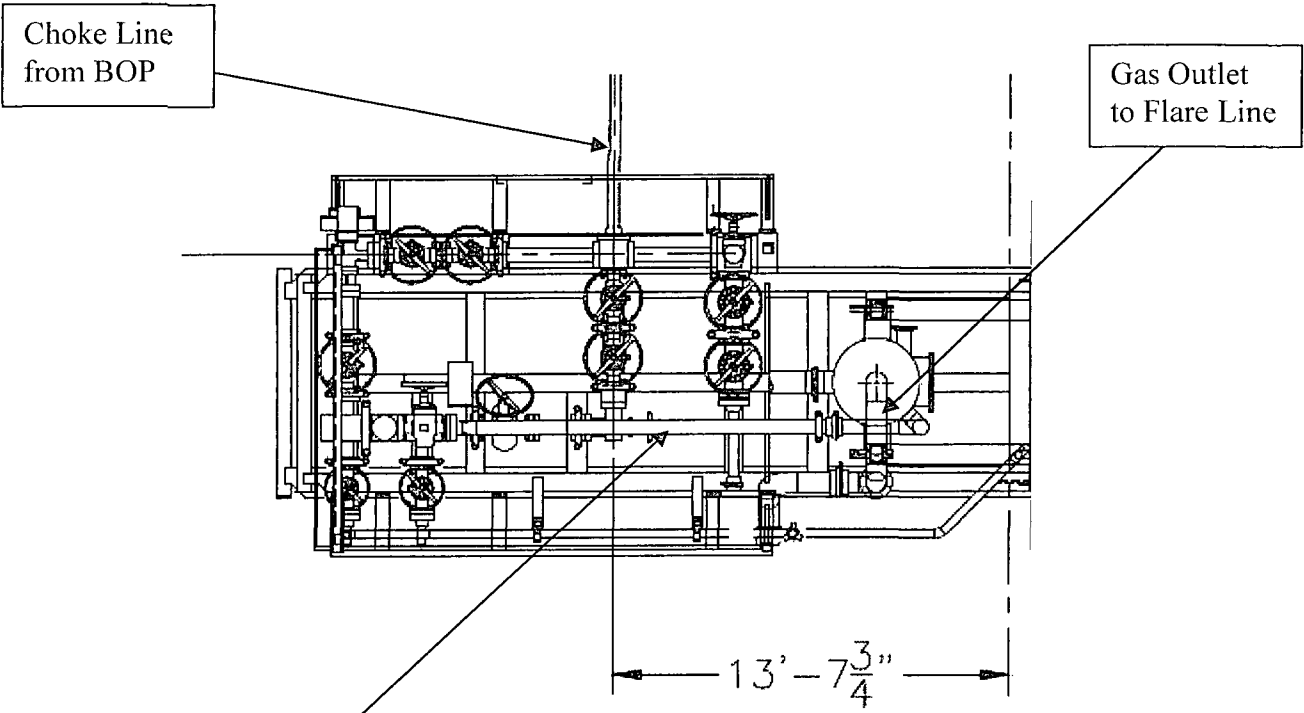


CM-1

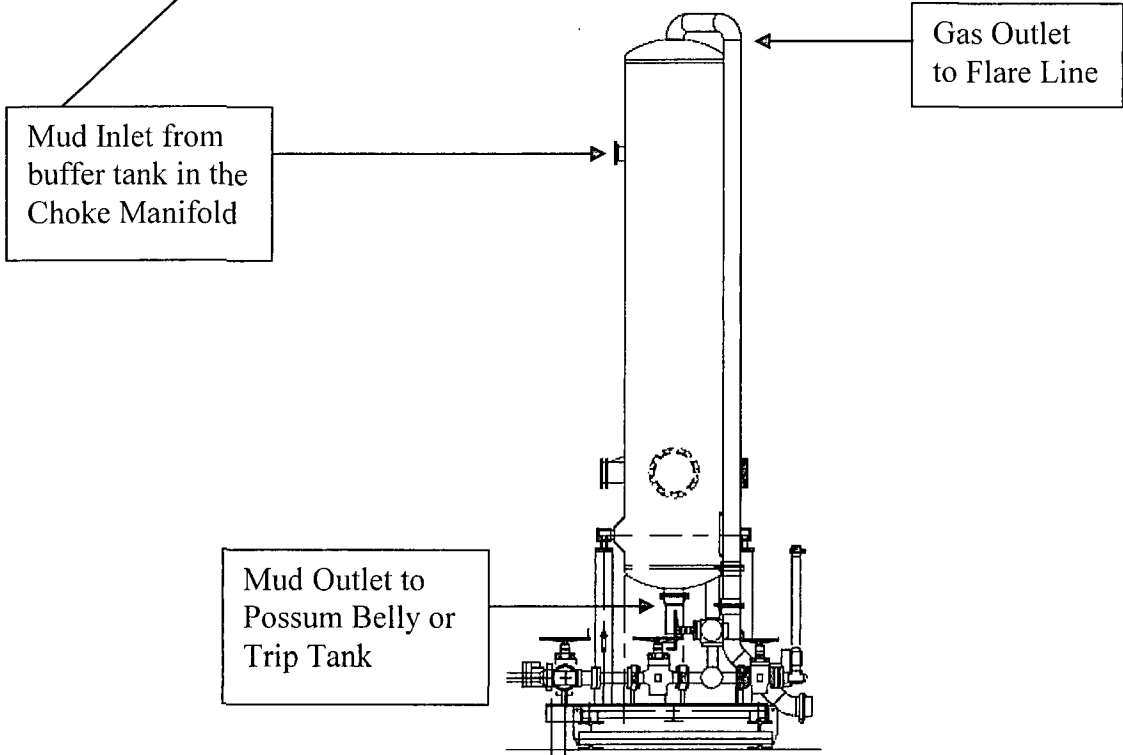
10M REMOTE KILL LINE SCHEMATIC



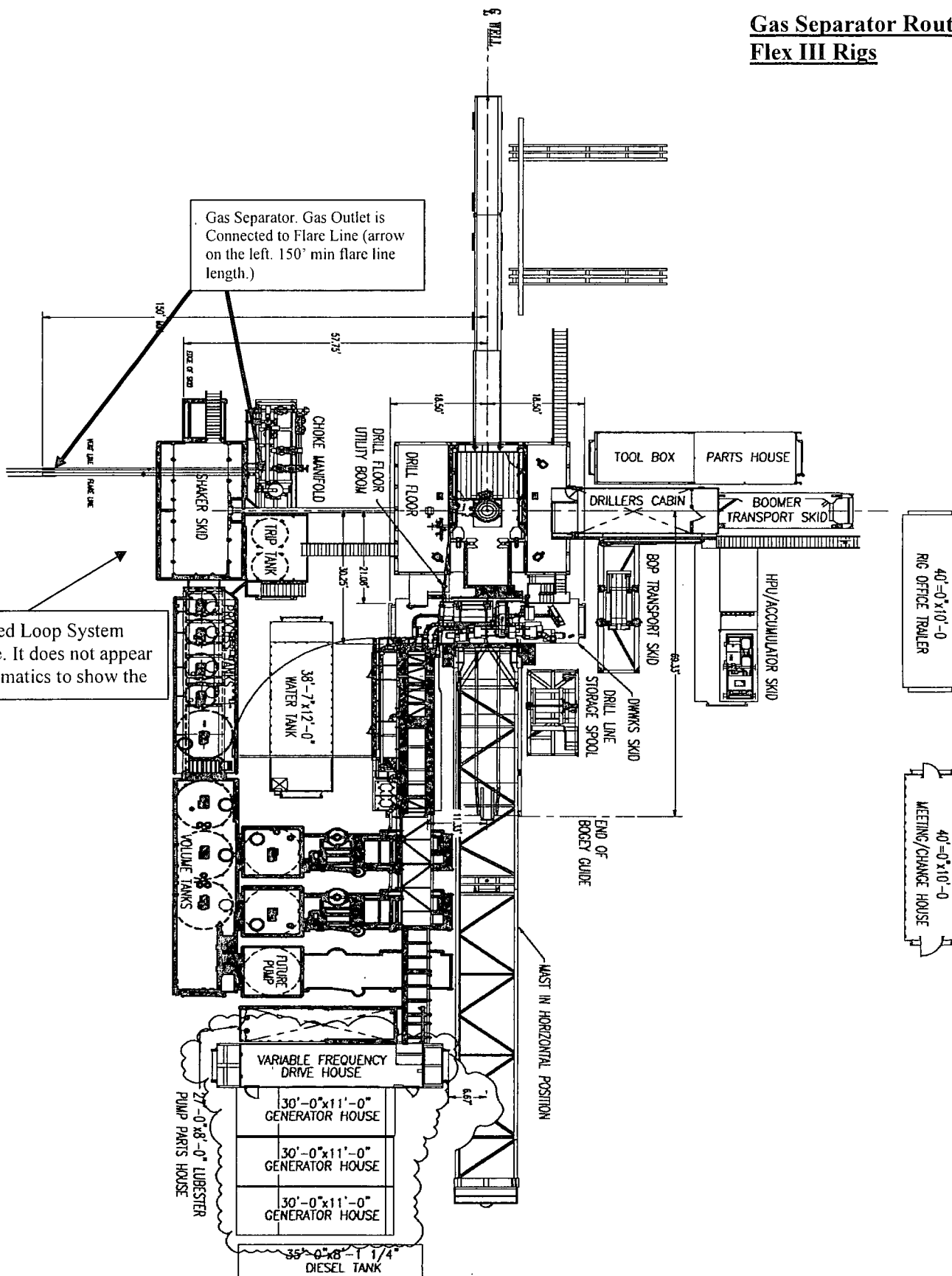
Choke Manifold – Gas Separator (Top View)



Choke Manifold – Gas Separator (Side View)



Gas Separator Routing Flex III Rigs





Fluid Technology

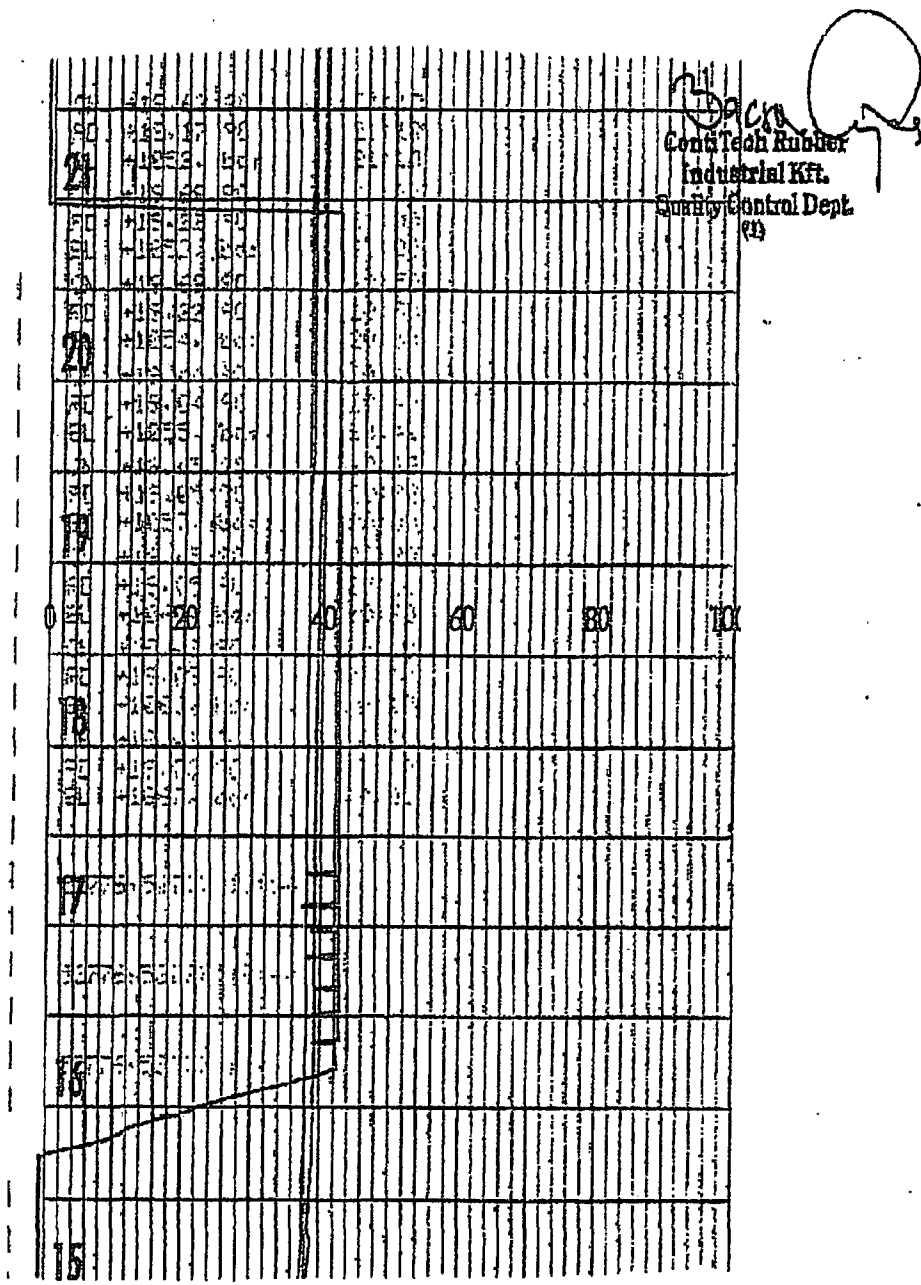
Quality Document

QUALITY CONTROL INSPECTION AND TEST CERTIFICATE				CERT. N°: 746	
PURCHASER: Phoenix Beattie Co.				P.O. N°: 002491	
CONTITECH ORDER N°: 412638		HOSE TYPE: 3" ID Choke and Kill Hose			
HOSE SERIAL N°: 52777		NOMINAL / ACTUAL LENGTH: 10,67 m			
W.P. 68,96 MPa 10000 psi		T.P. 103,4 MPa 15000 psi		Duration: 60 ~ min.	
Pressure test with water at ambient temperature <p style="text-align: center;">See attachment. (1 page)</p>					
↑ 10 mm = 10 Min. → 10 mm = 25 MPa					
COUPLINGS					
Type	Serial N°		Quality	Heat N°	
3" coupling with 4 1/16" Flange end	917 913		AISI 4130	T7998A	
			AISI 4130	26984	
INFOCHIP INSTALLED				API Spec 16 C Temperature rate: "B"	
All metal parts are flawless					
WE CERTIFY THAT THE ABOVE HOSE HAS BEEN MANUFACTURED IN ACCORDANCE WITH THE TERMS OF THE ORDER AND PRESSURE TESTED AS ABOVE WITH SATISFACTORY RESULT.					
Date:	Inspector		Quality Control		
04. April. 2008			ContiTech Rubber Industrial Kft. Quality Control Dept. (1)		

FH2

Coflex Hose Certification

Page: 1/1



Coflex Hose Certification

FH-6

Form No 100/12



Phoenix Beattie Corp

11535 Brittmoore Park Drive
Houston, TX 77041
Tel: (832) 327-0141
Fax: (832) 327-0148
E-mail mail@phoenixbeattie.com
www.phoenixbeattie.com

Delivery Note

Customer Order Number	370-369-001	Delivery Note Number	003078	Page	2
Customer / Invoice Address HELMERICH & PAYNE INT'L DRILLING CO 1437 SOUTH BOULDER TULSA, OK 74119		Delivery / Address HELMERICH & PAYNE IDC ATTN: JOE STEPHENSON - RIG 370 13609 INDUSTRIAL ROAD HOUSTON, TX 77015			

Customer Acc No	Phoenix Beattie Contract Manager	Phoenix Beattie Reference	Date
H01	JJL	006330	05/23/2008

Item No	Beattie Part Number / Description	Qty Ordered	Qty Sent	Qty To Follow
4	SC725-132CS SAFETY CLAMP 132MM 7.25T C/S GALVANIZED C/W BOLTS	1	1	0
5	00CERT-HYDRO HYDROSTATIC PRESSURE TEST CERTIFICATE	1	1	0
6	00CERT-LOAD LOAD TEST CERTIFICATES	1	1	0
7	00FREIGHT INBOUND / OUTBOUND FREIGHT PRE-PAY & ADD TO FINAL INVOICE NOTE: MATERIAL MUST BE ACCOMPANIED BY PAPERWORK INCLUDING THE PURCHASE ORDER, RIG NUMBER TO ENSURE PROPER PAYMENT	1	1	0

Phoenix Beattie Inspection Signature :

Received In Good Condition : Signature

Print Name

Date

All goods remain the property of Phoenix Beattie until paid for in full. Any damage or shortage on this delivery must be advised within 5 days. Returns may be subject to a handling charge.

FF-4

Coflex Hose Certification

Form No 100/12



Phoenix Beattie Corp

11535 Brittmoore Park Drive
Houston, TX 77041
Tel: (832) 327-0141
Fax: (832) 327-0148
E-mail: sales@phoenixbeattie.com
www.phoenixbeattie.com

Delivery Note

Customer Order Number	370-369-001	Delivery Note Number	003078	Page	1
Customer / Invoice Address HELMERICH & PAYNE INT'L DRILLING CO 1437 SOUTH BOULDER TULSA, OK 74119		Delivery / Address HELMERICH & PAYNE IDC ATTN: JOE STEPHENSON - RIG 370 13609 INDUSTRIAL ROAD HOUSTON, TX 77015			

Customer Acc No	Phoenix Beattie Contract Manager	Phoenix Beattie Reference	Date
H01	JJL	006330	05/23/2008

Item No	Beattie Part Number / Description	Qty Ordered	Qty Sent	Qty To Follow
1	HP10CK3A-35-4F1 3" 10K 16C C&K HOSE x 35ft OAL CW 4.1/16" API SPEC FLANGE E/ End 1: 4.1/16" 10Kpsi API Spec 6A Type 6BX Flange End 2: 4.1/16" 10Kpsi API Spec 6A Type 6BX Flange c/w BX155 Standard ring groove at each end Suitable for H2S Service Working pressure: 10,000psi Test pressure: 15,000psi Standard: API 16C Full specification Armor Guarding: Included Fire Rating: Not Included Temperature rating: -20 Deg C to +100 Deg C	1	1	0
2	SECK3-HPF3 LIFTING & SAFETY EQUIPMENT TO SUIT HP10CK3-35-F1 2 x 160mm ID Safety Clamps 2 x 244mm ID Lifting Collars & element C's 2 x 7ft Stainless Steel wire rope 3/4" OD 4 x 7.75t Shackles	1	1	0
3	SC725-200CS SAFETY CLAMP 200MM 7.25T C/S GALVANISED	1	1	0

Continued...

All goods remain the property of Phoenix Beattie until paid for in full. Any damage or shortage on this delivery must be advised within 5 days. Returns may be subject to a handling charge.



Material Identification Certificate

PA No	006330	Client	HELMERICH & PAYNE INT'L DRILLING	Client Ref	370-369-001	Page	1
-------	--------	--------	----------------------------------	------------	-------------	------	---

[illegible]

We hereby certify that these goods have been inspected by our Quality Management System, and to the best of our knowledge are found to conform to relevant industry standards within the requirements of the purchase order as issued to Phoenix Beattie Corporation.

05/23/08

Coflex Hose Certification

W-F-T

CERTIFICATE OF CONFORMITY

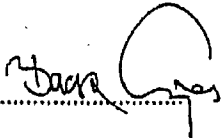
Supplier : CONTITECH RUBBER INDUSTRIAL KFT.
Equipment : 6 pcs. Choke and Kill Hose with installed couplings
Type : 3" x 10,67 m WP: 10000 psi
Supplier File Number : 412638
Date of Shipment : April. 2008
Customer : Phoenix Beattie Co.
Customer P.o. : 002491
Referenced Standards
/ Codes / Specifications : API Spec 16 C
Serial No.: 52754,52755,52776,52777,52778,52782

STATEMENT OF CONFORMITY

We hereby certify that the above items/equipment supplied by us are in conformity with the terms, conditions and specifications of the above Purchaser Order and that these items/equipment were fabricated inspected and tested in accordance with the referenced standards, codes and specifications and meet the relevant acceptance criteria and design requirements.

COUNTRY OF ORIGIN HUNGARY/EU

Signed :

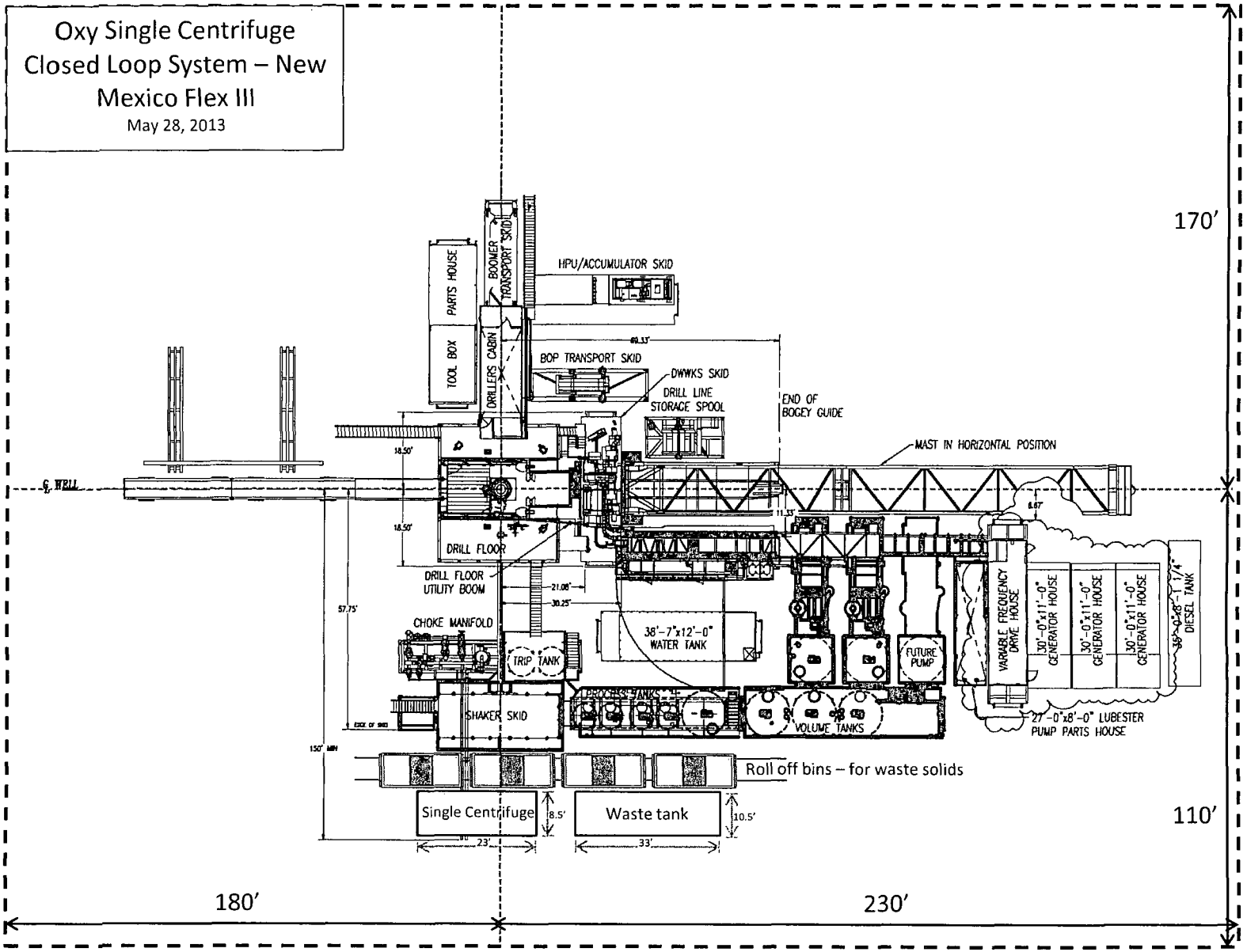


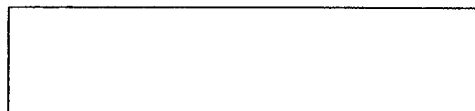
ContiTech Rubber
Industrial Kft.
Quality Control Dept.
(1)

Date: 04. April. 2008


Position: Q.C. Manager


Oxy Single Centrifuge
Closed Loop System – New
Mexico Flex III
May 28, 2013






Oxy Single Centrifuge
Closed Loop System – New
Mexico Flex III
May 28, 2013

 H2S Detectors. At least three detectors will be installed: bell nipple, rig floor and Shakers.

 Briefing Areas. At least two briefing areas will be placed, 90 deg off.

 Wind direction indicators. Visible from rig floor and from the mud pits area.

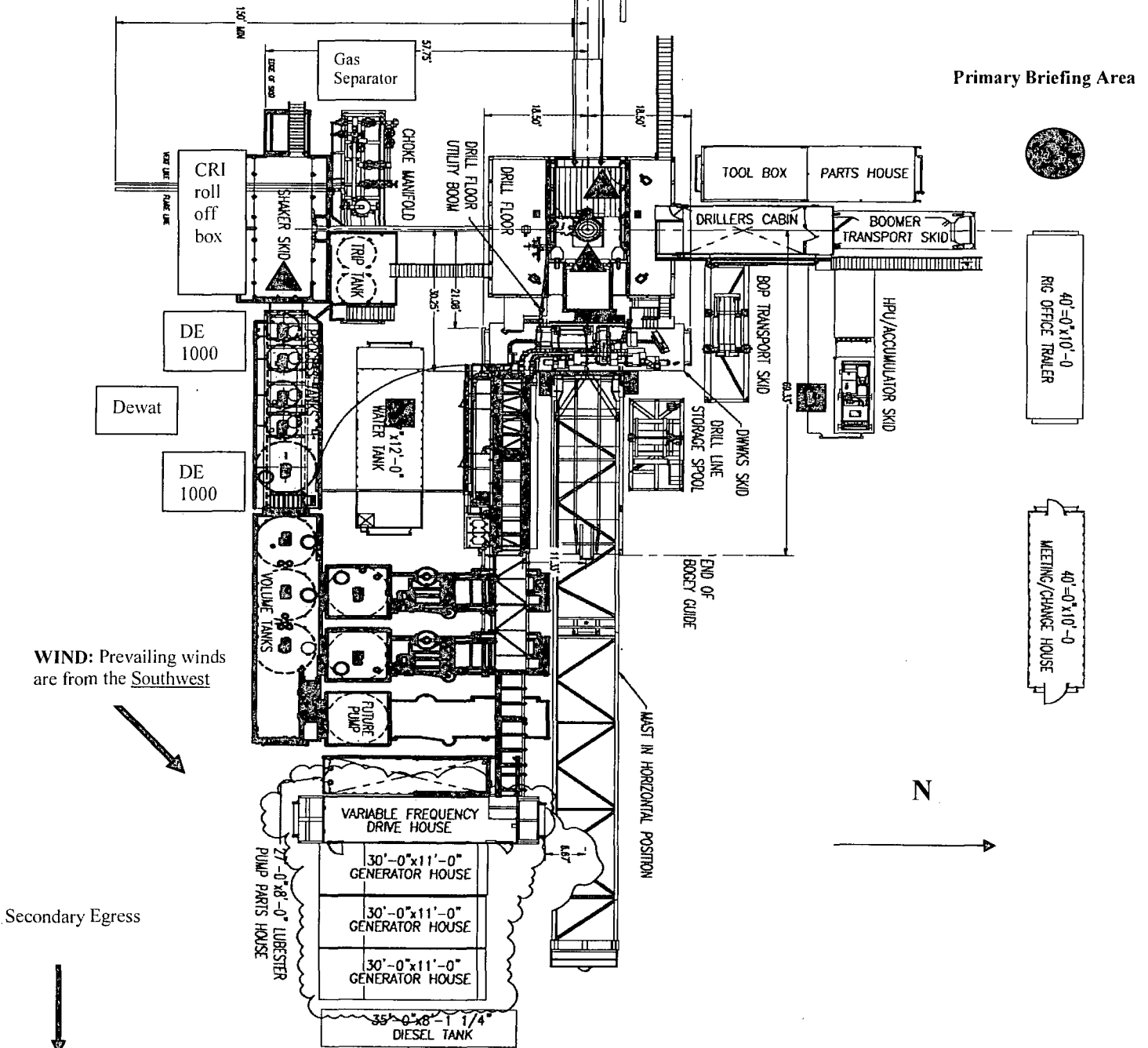
A gas buster is connected to both the choke manifold and flowline outlets.

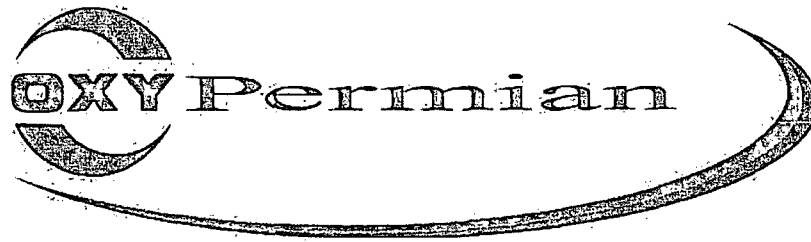
Rig Layout

Secondary Briefing Area

Exit to road. Caution sign placed here.

Primary Briefing Area



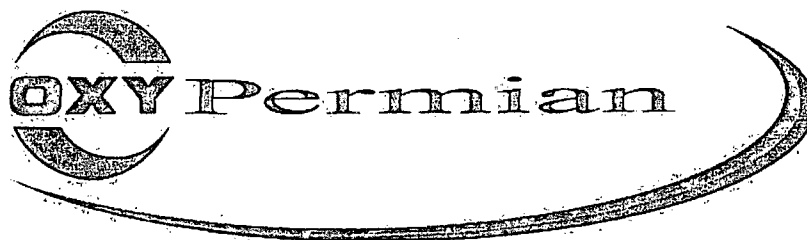


Permian Drilling Hydrogen Sulfide Drilling Operations Plan Sundance 4 Federal #1H

Open drill site. No homes or buildings are near the proposed location.

1. Escape

Personnel shall escape upwind of wellbore in the event of an emergency gas release. Escape can take place through the lease road on the Northwest side of the location. Personnel need to move to a safe distance and block the entrance to location. If the primary route is not an option due to the wind direction, then a secondary egress route should be taken.



Permian Drilling Hydrogen Sulfide Drilling Operations Plan New Mexico

Scope

This contingency plan establishes guidelines for the public, all company employees, and contract employees who's work activities may involve exposure to hydrogen sulfide (H₂S) gas.

While drilling this well, it is possible to encounter H₂S bearing formations. At all times, the first barrier to control H₂S emissions will be the drilling fluid, which will have a density high enough to control influx.

Objective

1. Provide an immediate and predetermined response plan to any condition when H₂S is detected. All H₂S detections in excess of 10 parts per million (ppm) concentration are considered an Emergency.
2. Prevent any and all accidents, and prevent the uncontrolled release of hydrogen sulfide into the atmosphere.
3. Provide proper evacuation procedures to cope with emergencies.
4. Provide immediate and adequate medical attention should an injury occur.

Discussion

Implementation:	This plan with all details is to be fully implemented before drilling to <u>commence</u> .
Emergency response Procedure:	This section outlines the conditions and denotes steps to be taken in the event of an emergency.
Emergency equipment Procedure:	This section outlines the safety and emergency equipment that will be required for the drilling of this well.
Training provisions:	This section outlines the training provisions that must be adhered to prior to drilling.
Drilling emergency call lists:	Included are the telephone numbers of all persons to be contacted should an emergency exist.
Briefing:	This section deals with the briefing of all people involved in the drilling operation.
Public safety:	Public safety personnel will be made aware of any potential evacuation and any additional support needed.
Check lists:	Status check lists and procedural check lists have been included to insure adherence to the plan.
General information:	A general information section has been included to supply support information.

Hydrogen Sulfide Training

All personnel, whether regularly assigned, contracted, or employed on an unscheduled basis, will receive training from a qualified instructor in the following areas prior to commencing drilling operations on the well:

1. The hazards and characteristics of H₂S.
2. Proper use and maintenance of personal protective equipment and life support systems.
3. H₂S detection.
4. Proper use of H₂S detectors, alarms, warning systems, briefing areas, evacuation procedures and prevailing winds.
5. Proper techniques for first aid and rescue procedures.
6. Physical effects of hydrogen sulfide on the human body.
7. Toxicity of hydrogen sulfide and sulfur dioxide.
8. Use of SCBA and supplied air equipment.
9. First aid and artificial respiration.
10. Emergency rescue.

In addition, supervisory personnel will be trained in the following areas:

1. The effects of H₂S on metal components. If high tensile strength tubular is to be used, personnel will be trained in their special maintenance requirements.
2. Corrective action and shut-in procedures when drilling a well, blowout prevention and well control procedures.
3. The contents and requirements of the H₂S Drilling Operations Plan.

H₂S training refresher must have been taken within one year prior to drilling the well. Specifics on the well to be drilled will be discussed during the pre-spud meeting. H₂S and well control (choke) drills will be performed while drilling the well, at least on a weekly basis. This plan shall be available in the well site. All personnel will be required to carry the documentation proving that the H₂S training has been taken.

Service company and visiting personnel

- A. Each service company that will be on this well will be notified if the zone contains H₂S.
- B. Each service company must provide for the training and equipment of their employees before they arrive at the well site.
- C. Each service company will be expected to attend a well site briefing

Emergency Equipment Requirements

1. Well control equipment

The well shall have hydraulic BOP equipment for the anticipated pressures. Equipment is to be tested on installation and follow Oxy Well Control standard, as well as BLM Onshore Order #2.

Special control equipment:

- A. Hydraulic BOP equipment with remote control on ground. Remotely operated choke.
- B. Rotating head
- C. Gas buster equipment shall be installed before drilling out of surface pipe.

2. Protective equipment for personnel

- A. Four (4) 30-minute positive pressure air packs (2 at each briefing area) on location.
- B. Adequate fire extinguishers shall be located at strategic locations.
- C. Radio / cell telephone communication will be available at the rig.
 - Rig floor and trailers.
 - Vehicle.

3. Hydrogen sulfide sensors and alarms

- A. H2S sensor with alarms will be located on the rig floor, at the bell nipple, and at the flow line. These monitors will be set to alarm at 10 ppm with strobe light, and audible alarm.
- B. Hand operated detectors with tubes.
- C. H2S monitor tester (to be provided by contract Safety Company.)
- D. There shall be one combustible gas detector on location at all times.

4. Visual Warning Systems

- A. One sign located at each location entrance with the following language:

**Caution – potential poison gas
Hydrogen sulfide
No admittance without authorization**

Wind sock – wind streamers:

- A. One 36" (in length) wind sock located at protection center, at height visible from rig floor.
- B. One 36" (in length) wind sock located at height visible from pit areas.

Condition flags

- A. One each condition flag to be displayed to denote conditions.

green – normal conditions
yellow – potential danger
red – danger, H2S present

- B. Condition flag shall be posted at each location sign entrance.

5. Mud Program

The mud program is designed to minimize the risk of having H2S and other formation fluids at surface. Proper mud weight and safe drilling practices will be applied. H2S scavengers will be used to minimize the hazards while drilling. Below is a summary of the drilling program.

Mud inspection devices:

Garrett gas train or hatch tester for inspection of sulfide concentration in mud system.

6. Metallurgy

- A. Drill string, casing, tubing, wellhead, blowout preventers, drilling spools or adapters, kill lines, choke manifold, lines and valves shall be suitable for the H2S service.
- B. All the elastomers, packing, seals and ring gaskets shall be suitable for H2S service.

7. Well Testing

No drill stem test will be performed on this well.

8. Evacuation plan

Evacuation routes should be established prior to well spud for each well and discussed with all rig personnel.

9. Designated area

- A. Parking and visitor area: all vehicles are to be parked at a predetermined safe distance from the wellhead.
- B. There will be a designated smoking area.
- C. Two briefing areas on either side of the location at the maximum allowable distance from the well bore so they offset prevailing winds perpendicularly, or at a 45-degree angle if wind direction tends to shift in the area.

Emergency procedures

- A. In the event of any evidence of H₂S level above 10 ppm, take the following steps:
 - 1. The Driller will pick up off bottom, shut down the pumps, slow down the pipe rotation.
 - 2. Secure and don escape breathing equipment, report to the upwind designated safe briefing / muster area.
 - 3. All personnel on location will be accounted for and emergency search should begin for any missing, the Buddy System will be implemented.
 - 4. Order non-essential personnel to leave the well site, order all essential personnel out of the danger zone and upwind to the nearest designated safe briefing / muster area.
 - 5. Entrance to the location will be secured to a higher level than our usual "Meet and Greet" requirement, and the proper condition flag will be displayed at the entrance to the location.
 - 6. Take steps to determine if the H₂S level can be corrected or suppressed and, if so, proceed as required.
- B. If uncontrollable conditions occur:
 - 1. Take steps to protect and/or remove any public in the down-wind area from the rig – partial evacuation and isolation. Notify necessary public safety personnel and appropriate regulatory entities (i.e. BLM) of the situation.

2. Remove all personnel to the nearest upwind designated safe briefing / muster area or off location.
3. Notify public safety personnel of safe briefing / muster area.
4. An assigned crew member will blockade the entrance to the location. No unauthorized personnel will be allowed entry to the location.
5. Proceed with best plan (at the time) to regain control of the well. Maintain tight security and safety procedures.

C. Responsibility:

1. Designated personnel.
 - a. Shall be responsible for the total implementation of this plan.
 - b. Shall be in complete command during any emergency.
 - c. Shall designate a back-up.

- All personnel:
1. On alarm, don escape unit and report to the nearest upwind designated safe briefing / muster area upw
 2. Check status of personnel (buddy system).
 3. Secure breathing equipment.
 4. Await orders from supervisor.

- Drill site manager:
1. Don escape unit if necessary and report to nearest upwind designated safe briefing / muster area.
 2. Coordinate preparations of individuals to return to point of release with tool pusher and driller (using the buddy system).
 3. Determine H₂S concentrations.
 4. Assess situation and take control measures.

- Tool pusher:
1. Don escape unit Report to up nearest upwind designated safe briefing / muster area.
 2. Coordinate preparation of individuals to return to point of release with tool pusher drill site manager (using the buddy system).
 3. Determine H₂S concentration.
 4. Assess situation and take control measures.

- Driller:
1. Don escape unit, shut down pumps, continue

- rotating DP.
2. Check monitor for point of release.
3. Report to nearest upwind designated safe briefing / muster area.
4. Check status of personnel (in an attempt to rescue, use the buddy system).
5. Assigns least essential person to notify Drill Site Manager and tool pusher by quickest means in case of their absence.
6. Assumes the responsibilities of the Drill Site Manager and tool pusher until they arrive should they be absent.

Derrick man
Floor man #1
Floor man #2

1. Will remain in briefing / muster area until instructed by supervisor.

Mud engineer:

1. Report to nearest upwind designated safe briefing / muster area.
2. When instructed, begin check of mud for ph and H₂S level. (Garett gas train.)

Safety personnel:

1. Mask up and check status of all personnel and secure operations as instructed by drill site manager.

Taking a kick

When taking a kick during an H₂S emergency, all personnel will follow standard Well control procedures after reporting to briefing area and masking up.

Open-hole logging

All unnecessary personnel off floor. Drill Site Manager and safety personnel should monitor condition, advise status and determine need for use of air equipment.

Running casing or plugging

Following the same "tripping" procedure as above. Drill Site Manager and safety personnel should determine if all personnel have access to protective equipment.

Ignition procedures

The decision to ignite the well is the responsibility of the operator (Oxy Drilling Management). The decision should be made only as a last resort and in a situation where it is clear that:

1. Human life and property are endangered.
2. There is no hope controlling the blowout under the prevailing conditions at the well.

Instructions for igniting the well

1. Two people are required for the actual igniting operation. They must wear self-contained breathing units and have a safety rope attached. One man (tool pusher or safety engineer) will check the atmosphere for explosive gases with the gas monitor. The other man is responsible for igniting the well.
2. Primary method to ignite: 25 mm flare gun with range of approximately 500 feet.
3. Ignite upwind and do not approach any closer than is warranted.
4. Select the ignition site best for protection, and which offers an easy escape route.
5. Before firing, check for presence of combustible gas.
6. After lighting, continue emergency action and procedure as before.
7. All unassigned personnel will remain in briefing area until instructed by supervisor or directed by the Drill Site Manager.

Remember: After well is ignited, burning hydrogen sulfide will convert to sulfur dioxide, which is also highly toxic. **Do not assume the area is safe after the well is ignited.**

Status check list

Note: All items on this list must be completed before drilling to production casing point.

1. H2S sign at location entrance.
2. Two (2) wind socks located as required.
3. Four (4) 30-minute positive pressure air packs (2 at each Briefing area) on location for all rig personnel and mud loggers.
4. Air packs inspected and ready for use.
5. Cascade system and hose line hook-up as needed.
6. Cascade system for refilling air bottles as needed.
7. Condition flag on location and ready for use.
8. H2S detection system hooked up and tested.
9. H2S alarm system hooked up and tested.
10. Hand operated H2S detector with tubes on location.
11. 1 – 100' length of nylon rope on location.
12. All rig crew and supervisors trained as required.
13. All outside service contractors advised of potential H2S hazard on well.
14. No smoking sign posted and a designated smoking area identified.
15. Calibration of all H2S equipment shall be noted on the IADC report.

Checked by: _____ Date: _____

Procedural check list during H₂S events**Perform each tour:**

1. Check fire extinguishers to see that they have the proper charge.
2. Check breathing equipment to ensure that it is in proper working order.
3. Make sure all the H₂S detection system is operative.

Perform each week:

1. Check each piece of breathing equipment to make sure that demand or forced air regulator is working. This requires that the bottle be opened and the mask assembly be put on tight enough so that when you inhale, you receive air or feel air flow.
2. BOP skills (well control drills).
3. Check supply pressure on BOP accumulator stand by source.
4. Check breathing equipment mask assembly to see that straps are loosened and turned back, ready to put on.
5. Check pressure on breathing equipment air bottles to make sure they are charged to full volume. (Air quality checked for proper air grade "D" before bringing to location)
6. Confirm pressure on all supply air bottles.
7. Perform breathing equipment drills with on-site personnel.
8. Check the following supplies for availability.
 - A. Emergency telephone list.
 - B. Hand operated H₂S detectors and tubes.

General evacuation plan

1. When the company approved supervisor (Drill Site Manager, consultant, rig pusher, or driller) determines the H₂S gas cannot be limited to the well location and the public will be involved, he will activate the evacuation plan.
2. Drill Site Manager or designee will notify local government agency that a hazardous condition exists and evacuation needs to be implemented.
3. Company or contractor safety personnel that have been trained in the use of H₂S detection equipment and self-contained breathing equipment will monitor H₂S concentrations, wind directions, and area of exposure. They will delineate the outer perimeter of the hazardous gas area. Extension to the evacuation area will be determined from information gathered.
4. Law enforcement personnel (state police, police dept., fire dept., and sheriff's dept.) Will be called to aid in setting up and maintaining road blocks. Also, they will aid in evacuation of the public if necessary.
5. After the discharge of gas has been controlled, company safety personnel will determine when the area is safe for re-entry.

Important: Law enforcement personnel will not be asked to come into a contaminated area. Their assistance will be limited to uncontaminated areas. Constant radio contact will be maintained with them.

Emergency actions

Well blowout – if emergency

1. Evacuate all personnel to “Safe Briefing / Muster Areas” or off location if needed.
2. If sour gas – evacuate rig personnel.
3. If sour gas – evacuate public within 3000 ft radius of exposure.
4. Don SCBA and shut well in if possible using the buddy system.
5. Notify Drilling Superintendent and call 911 for emergency help (fire dept and ambulance) if needed.
6. Implement the Blowout Contingency Plan, and Drilling Emergency Action Plan.
6. Give first aid as needed.

Person down location/facility

1. If immediately possible, contact 911. Give location and wait for confirmation.
2. Don SCBA and perform rescue operation using buddy system.

Toxic effects of hydrogen sulfide

Hydrogen sulfide is extremely toxic. The acceptable ceiling concentration for eight-hour exposure is 10 ppm, which is .001% by volume. Hydrogen sulfide is heavier than air (specific gravity – 1.192) and colorless. It forms an explosive mixture with air between 4.3 and 46.0 percent by volume. Hydrogen sulfide is almost as toxic as hydrogen cyanide and is between five and six times more toxic than carbon monoxide. Toxicity data for hydrogen sulfide and various other gases are compared in table i. Physical effects at various hydrogen sulfide exposure levels are shown in table ii.

Table i
Toxicity of various gases

Common name	Chemical formula	Specific gravity (sc=1)	Threshold limit (1)	Hazardous limit (2)	Lethal concentration (3)
Hydrogen Cyanide	Hcn	0.94	10 ppm	150 ppm/hr	300 ppm
Hydrogen Sulfide	H ₂ S	1.18	10 ppm	250 ppm/hr	600 ppm
Sulfur Dioxide	So ₂	2.21	5 ppm	-	1000 ppm
Chlorine	Cl ₂	2.45	1 ppm	4 ppm/hr	1000 ppm
Carbon Monoxide	Co	0.97	50 ppm	400 ppm/hr	1000 ppm
Carbon Dioxide	Co ₂	1.52	5000 ppm	5%	10%
Methane	Ch ₄	0.55	90,000 ppm	Combustible above 5% in air	

- 1) threshold limit – concentration at which it is believed that all workers may be repeatedly exposed day after day without adverse effects.
- 2) hazardous limit – concentration that will cause death with short-term exposure.
- 3) lethal concentration – concentration that will cause death with short-term exposure.

Toxic effects of hydrogen sulfide

Table ii
Physical effects of hydrogen sulfide

<u>Percent (%)</u>	<u>Ppm</u>	<u>Concentration</u> Grains <u>100 std. Ft3*</u>	<u>Physical effects</u>
0.001	<10	00.65	Obvious and unpleasant odor.

0.002	10	01.30	Safe for 8 hours of exposure.
0.010	100	06.48	Kill smell in 3 – 15 minutes. May sting eyes and throat.
0.020	200	12.96	Kills smell shortly; stings eyes and throat.
0.050	500	32.96	Dizziness; breathing ceases in a few minutes; needs prompt artificial respiration.
0.070	700	45.36	Unconscious quickly; death will result if not rescued promptly.
0.100	1000	64.30	Unconscious at once; followed by death within minutes.

*at 15.00 psia and 60'f.

Use of self-contained breathing equipment (SCBA)

1. Written procedures shall be prepared covering safe use of SCBA's in dangerous atmosphere, which might be encountered in normal operations or in emergencies. Personnel shall be familiar with these procedures and the available SCBA.
2. SCBA's shall be inspected frequently at random to insure that they are properly used, cleaned, and maintained.
3. Anyone who may use the SCBA's shall be trained in how to insure proper face-piece to face seal. They shall wear SCBA's in normal air and then wear them in a test atmosphere. (note: such items as facial hair {beard or sideburns} and eyeglasses will not allow proper seal.) Anyone that may be reasonably expected to wear SCBA's should have these items removed before entering a toxic atmosphere. A special mask must be obtained for anyone who must wear eyeglasses or contact lenses.
4. Maintenance and care of SCBA's:
 - a. A program for maintenance and care of SCBA's shall include the following:
 1. Inspection for defects, including leak checks.
 2. Cleaning and disinfecting.
 3. Repair.
 4. Storage.
 - b. Inspection, self-contained breathing apparatus for emergency use shall be inspected monthly.
 1. Fully charged cylinders.
 2. Regulator and warning device operation.
 3. Condition of face piece and connections.
 4. Rubber parts shall be maintained to keep them pliable and prevent deterioration.
 - c. Routinely used SCBA's shall be collected, cleaned and disinfected as frequently as necessary to insure proper protection is provided.
5. Persons assigned tasks that requires use of self-contained breathing equipment shall be certified physically fit (medically cleared) for breathing equipment usage at least annually.
6. SCBA's should be worn when:
 - A. Any employee works near the top or on top of any tank unless test reveals less than 10 ppm of H2S.

- B. When breaking out any line where H₂S can reasonably be expected.
- C. When sampling air in areas to determine if toxic concentrations of H₂S exists.
- D. When working in areas where over 10 ppm H₂S has been detected.
- E. At any time there is a doubt as to the H₂S level in the area to be entered.

Rescue
First aid for H₂S poisoning

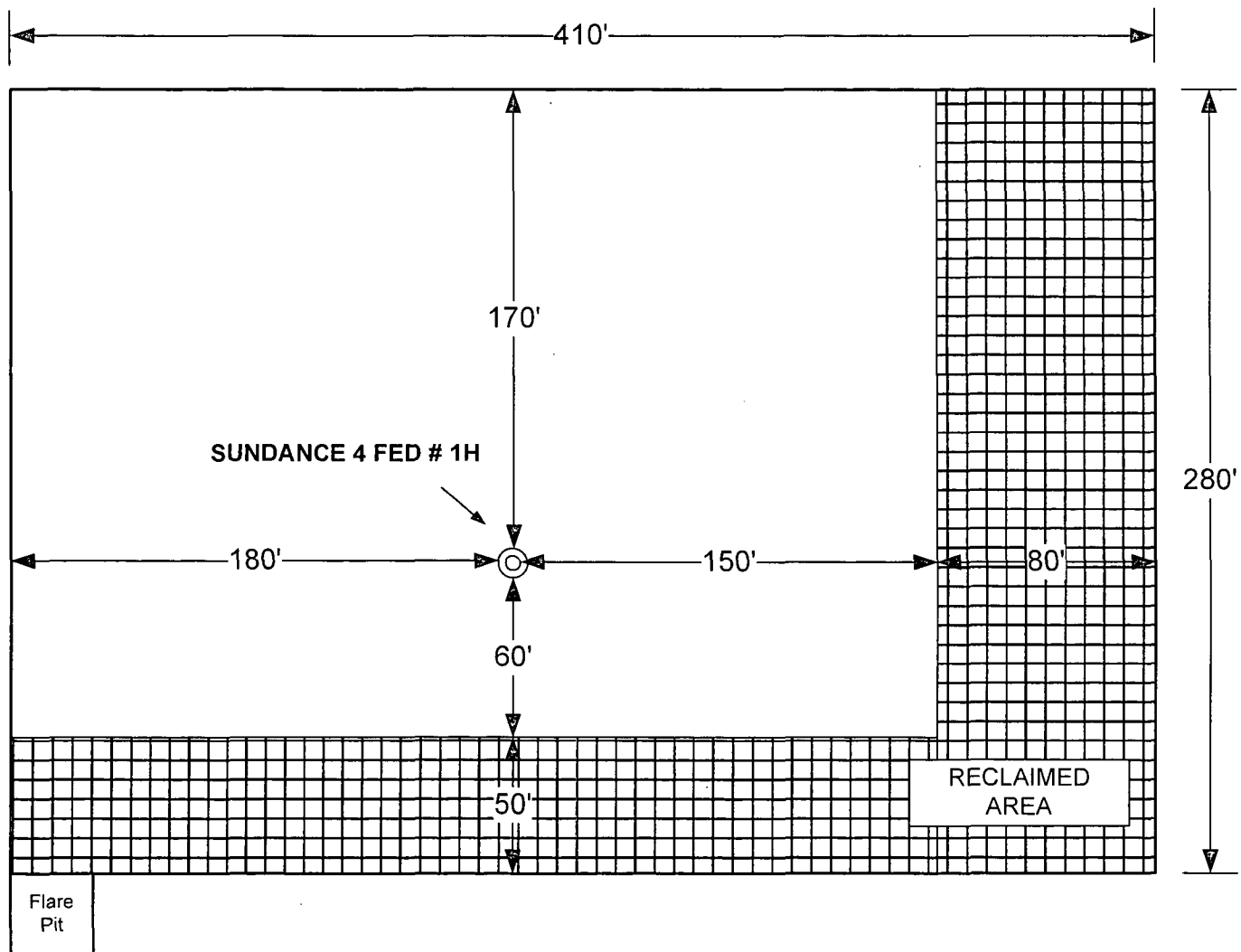
Do not panic!

Remain calm – think!

1. Don SCBA breathing equipment.
2. Remove victim(s) utilizing buddy system to fresh air as quickly as possible. (go up-wind from source or at right angle to the wind. Not down wind.)
3. Briefly apply chest pressure – arm lift method of artificial respiration to clean the victim's lungs and to avoid inhaling any toxic gas directly from the victim's lungs.
4. Provide for prompt transportation to the hospital, and continue giving artificial respiration if needed.
5. Hospital(s) or medical facilities need to be informed, before-hand, of the possibility of H₂S gas poisoning – no matter how remote the possibility is.
6. Notify emergency room personnel that the victim(s) has been exposed to H₂S gas.

Besides basic first aid, everyone on location should have a good working knowledge of artificial respiration.

Revised CM 6/27/2012



8' Diameter x 8' Deep Tinhorn
Cellar

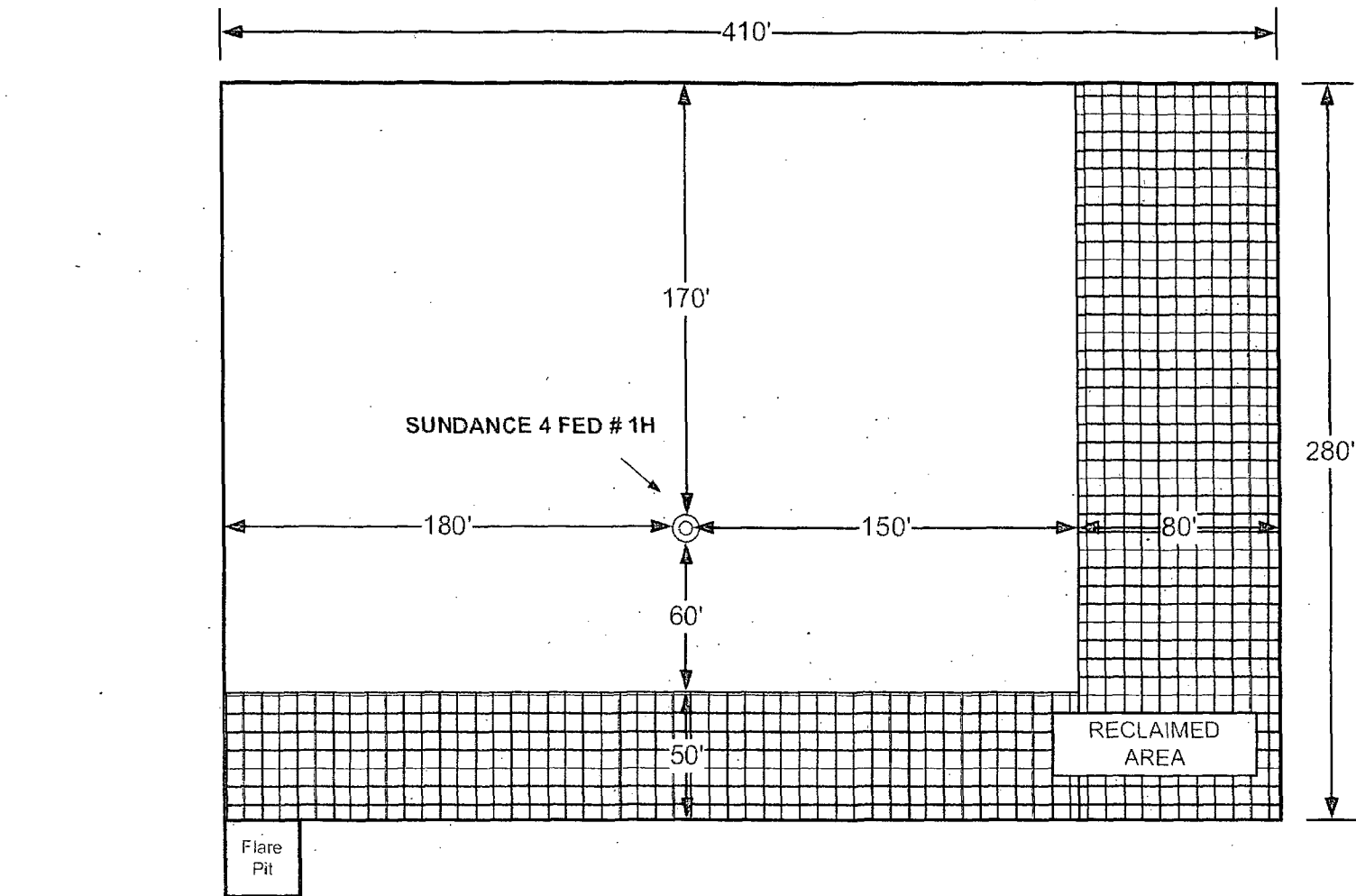
REVISION BLOCK

ENGINEERING RECORD

NO.	DATE	DESCRIPTION	BY	CHK	APP	BY	DATE

FLEX 3 & ENSIGN RIG DIAGRAM
SUNDANCE 4 FED # 1H
 EDDY COUNTY, NEW MEXICO

Well Site Layout

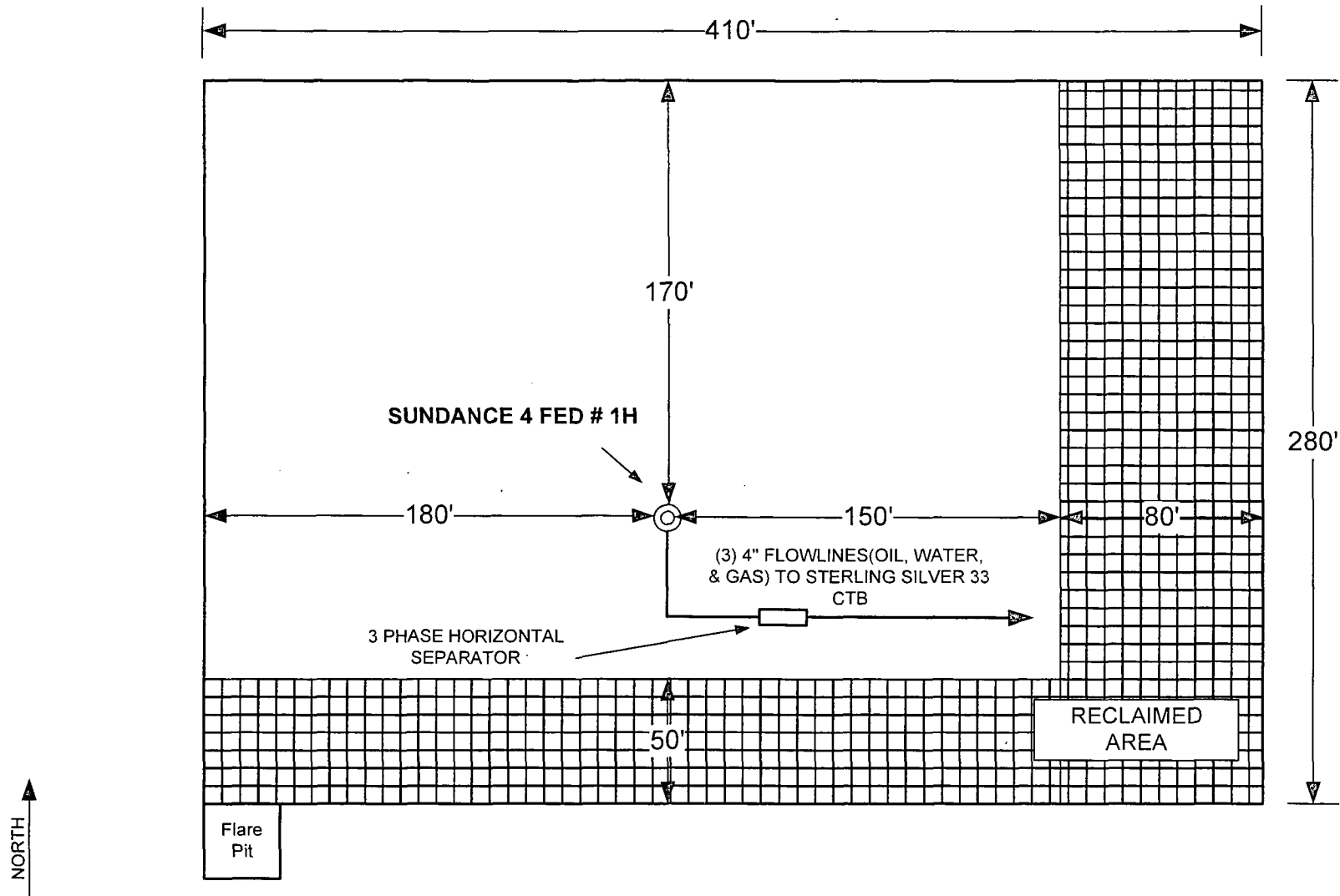


NORTH ↑

8' Diameter x 8' Deep Tinhorn
Cellar

REVISION BLOCK						ENGINEERING RECORD	
NO.	DATE	DESCRIPTION	BY	CHK	APP	BY	DATE

FLEX 3 & ENSIGN RIG DIAGRAM
SUNDANCE 4 FED # 1H
 EDDY COUNTY, NEW MEXICO



REVISION BLOCK						ENGINEERING RECORD		PRODUCTION FACILITY LAYOUT SUNDANCE 4 FED # 1H EDDY COUNTY, NEW MEXICO
NO.	DATE	DESCRIPTION	BY	CHK	APP	BY	DATE	
0	5/20/13	PRELIMINARY DRAFT	TKF					

Facility Layout

SURFACE USE PLAN OF OPERATIONS

Operator Name/Number:	OXY USA Inc.	16696
Lease Name/Number:	Sundance 4 Federal #1H	
Pool Name/Number:	Ingle Wells Bone Spring	33740
Surface Location:	235 FSL 500 FEL SESE(P) Sec 33 T23S R31E	Federal Lease No.NMNM045236
Penetration Point:	330 FNL 518 FEL NENE(A) Sec 4 T24S R31E	Federal Lease No.NMNM104730
Bottom Hole Location:	350 FSL 660 FEL SESE(P) Sec 4 T24S R31E	

1. Existing Roads

- a. A copy of a USGS "Los Medanos, NM" quadrangle map is attached showing the proposed location.
The well location is spotted on this map, which shows the existing road system.
- b. The well was staked by Terry J. Asel, Certificate No. 15079 on 9/27/12, certified 10/31/12.
- c. Directions to Location: From the Intersection of SH 128 and CR 787, go southeast on SH 128 for 1.1 miles. Turn right on caliche road and go south for 1.8 miles. Turn left and go east for 0.8 miles. Turn right and go south for 0.6 miles. Turn left and go southeast for 0.1 miles to location.

2. New or Reconstructed Access Roads:

- a. No new access road will be built.
- b. Surfacing material: N/A
- c. Maximum Grade: N/A
- d. Turnouts: None needed
- e. Drainage Design: N/A
- f. Culverts: None needed
- g. Cut and fills: N/A
- h. Gates or cattleguards: none required.
- i. Blade, water & repair an existing caliche road as needed.

3. Location of Existing Wells:

Existing wells within a one mile radius of the proposed well are shown on attached plat.

4. Location of Existing and/or Proposed Production Facilities.

- a. In the event the well is found productive, the Sterling Silver 33 central tank battery would be utilized and the necessary production equipment will be installed at the well site. See proposed Production Facilities Layout diagram.
- b. Electric line information is not available at this time, but If necessary will follow a route approved by the BLM.
- c. All flowlines will adhere to API Standards, see attached for detail and route.

5. Location and types of Water Supply.

This well will be drilled using a combination of water mud systems. It will be obtained from commercial water stations in the area and will be hauled to location by transport truck using existing and proposed roads.

6. Construction Materials:

Primary

All caliche utilized for the drilling pad and proposed access road will be obtained from an existing BLM/State/Fee approved pit or from prevailing deposits found on the location. Will use BLM recommended extra caliche from other locations close by for roads, if available.

Secondary

The secondary way of obtaining caliche to build locations and roads will be by "turning over" the location. This means, caliche will be obtained from the actual well site. A caliche permit will be obtained from BLM prior to pushing up any caliche. 2400 cubic yards is max amount of caliche needed for pad and roads. Amount will vary for each pad. The procedure below has been approved by BLM personnel:

- A. The top 6" of topsoil is pushed off and stockpiled along the side of the location.
- B. An approximate 120' X 120' area is used within the proposed well site to remove caliche.
- C. Subsoil is removed and piled along side the 120' X 120' are within the pad site.
- D. When caliche is found, material will be stocked piled within the pad site to build the location and road.
- E. Then subsoil is pushed back in the hole and caliche is spread accordingly across entire location and road.
- F. Once well is drilled the stock piled top soil will be used for interim reclamation and spread along areas where caliche is picked up and the location size is reduced. Neither caliche nor subsoil will be stock piled outside of the well pad. Topsoil will be stockpiled along the edge of the pad as depicted in attached plat.

7. Methods of Handling Waste Material:

- a. A closed loop system will be utilized consisting of above ground steel tanks and haul-off bins. Disposal of liquids, drilling fluids and cuttings will be disposed of at an approved facility.
 1. Solids - CRI
 2. Liquids - Laguna
- b. All trash, junk, and other waste material will be contained in trash cages or bins to prevent scattering. When the job is completed, all contents will be removed and disposed of in an approved sanitary landfill.
- c. The supplier, including broken sacks, will pick up slats remaining after completion of well.
- d. A Porto-john will be provided for the rig crews. This equipment will be properly maintained during the drilling and completion operations and will be removed when all operations are complete.
- e. Disposal of fluids to be transported will be by the following companies:
TFH Ltd. - Laguna SWD Facility

8. Ancillary Facilities: None needed

9. Well Site Layout

The proposed well site layout with dimensions of the pad layout and equipment location.

V-Door - West

CL Tanks- South

Pad - 280' X 410'

10. Plans for Surface Reclamation:

- a. After concluding the drilling and/or completion operations, if the well is found non-commercial, the caliche will be removed from the pad and transported to the original caliche pit or used for other drilling locations. The road will be reclaimed as directed by the BLM. The original top soil will again be returned to the pad and contoured, as close as possible, to the original topography.
- b. If the well is deemed commercially productive, caliche from areas of the pad site not required for operations will be reclaimed. The original top soil will be returned to the area of the drill pad not necessary to operate the well. These unused areas of the drill pad will be contoured, as close as possible, to match the original topography, and the area will be seeded with an approved BLM mixture to re-establish vegetation.

11. Surface Ownership

The surface is owned by the U.S. Government and is administered by the BLM. The surface is multiple use with the primary uses of the region for the grazing of livestock and the production of oil and gas. The surface is leased to: JR Engineering & Construction. P.O. Box 487, Carlsbad, NM 88221. They will be notified of our intention to drill prior to any activity.

12. Other Information

a. The vegetation cover is generally sparse consisting of mesquite, yucca, shinnery oak, sandsage and perennial native range grass. The topsoil is sandy in nature. Wildlife in the area is also sparse consisting of deer, coyotes, rabbits, rodents, reptiles, dove and quail.

b. There is no permanent or live water in the general proximity of the location.

c. There are no dwellings within 2 miles of the proposed well site.

d. Cultural Resources Examination - this well is located in the Permian Basin MOA (Paid 5/29/13 Receipt 2802419).

Pad + 1/4 mile road	<u>\$1,507.00</u>	47	\$0.19/ft over 1/4 mile	<u>\$0.00</u>	<u>\$1,507.00</u>
Pipeline - up to 1mile	<u>\$1,391.00</u>		\$290 per 1/4 mile	<u>\$0.00</u>	<u>\$1,391.00</u>
Total	<u>\$2,898.00</u>			<u>\$0.00</u>	<u>\$2,898.00</u>

e. Notice of this application will also be mailed to the following:

Western-Ag Minerals Co., P.O. Box 71, Carlsbad, NM 88221

13. Bond Coverage:

Bond Coverage is Individual-NMB000862, Nationwide-ESB00226

Operators Representatives:

The OXY Permian representatives responsible for ensuring compliance of the surface use plan are listed below.

Don Kendrick	Charles Wagner
Production Coordinator	Manager Field Operations
1502 West Commerce Dr.	1502 West Commerce Dr.
Carlsbad, NM 88220	Carlsbad, NM 88220
Office Phone: 575-628-4132	Office Phone: 575-628-4151
Cellular: 575-602-1484	Cellular: 575-725-8306
Roger Allen	Calvin (Dusty) Weaver
Drilling Superintendent	Operation Specialist
P.O. Box 4294	P.O. Box 50250
Houston, TX 77210	Midland, TX 79710
Office Phone: 713-215-7617	Office Phone: 432-685-5723
Cellular: 281-682-3919	Cellular: 806-893-3067
Sebastian Millan	Chan Tyson
Drilling Engineering Supervisor	Drilling Engineer
P.O. Box 4294	P.O. Box 4294
Houston, TX 77210	Houston, TX 77210
Office Phone: 713-985-8750	Office Phone: 713-513-6668
Cellular: 713-528-3268	Cellular: 832-564-6454

Oxy U.S.A. Inc.

New Mexico Staking Form

Date Staked: 9-11-12Lease/Well Name: Sundance 4 Fed #1HLegal Description: ²³⁵
~~H5~~ FSL 500 FEL Sec 33 T23S R31E

Latitude: _____

Longitude: _____

Move Information: 1.35' NorthCounty: EddySurface Owner: BLM

Nearest Residence: _____

Nearest Water Well: _____

V-Door: WestRoad Description: Road into 0 corner fromReclamation: 50' OFF SOUTH 80' OFF EAST

Source of Caliche _____

Topsoil EAST

John Fast
OK
9-27-12

PECOS DISTRICT CONDITIONS OF APPROVAL

OPERATOR'S NAME:	OXY USA Inc.
LEASE NO.:	NMNM-104730
WELL NAME & NO.:	Sundance 4 Federal 1H
SURFACE HOLE FOOTAGE:	0235' FSL & 0500' FEL
BOTTOM HOLE FOOTAGE:	0350' FSL & 0660' FEL Sec. 04, T. 24 S., R 31 E.
LOCATION:	Section 33, T. 23 S., R 31 E., NMPM
COUNTY:	Eddy County, New Mexico

TABLE OF CONTENTS

Standard Conditions of Approval (COA) apply to this APD. If any deviations to these standards exist or special COAs are required, the section with the deviation or requirement will be checked below.

- ☐ **General Provisions**
- ☐ **Permit Expiration**
- ☐ **Archaeology, Paleontology, and Historical Sites**
- ☐ **Noxious Weeds**
- ☒ **Special Requirements**
 - Lesser Prairie-Chicken Timing Stipulations
 - Ground-level Abandoned Well Marker
 - Potash
- ☐ **Construction**
 - Notification
 - Topsoil
 - Closed Loop System
 - Federal Mineral Material Pits
 - Well Pads
 - Roads
- ☐ **Road Section Diagram**
- ☒ **Drilling**
 - H2S Requirements
 - Cement Requirements
 - R-111-P Potash
 - Logging Requirements
 - Waste Material and Fluids
- ☐ **Production (Post Drilling)**
 - Well Structures & Facilities
 - Pipelines
- ☐ **Interim Reclamation**
- ☐ **Final Abandonment & Reclamation**

I. GENERAL PROVISIONS

The approval of the Application For Permit To Drill (APD) is in compliance with all applicable laws and regulations: 43 Code of Federal Regulations 3160, the lease terms, Onshore Oil and Gas Orders, Notices To Lessees, New Mexico Oil Conservation Division (NMOCD) Rules, National Historical Preservation Act As Amended, and instructions and orders of the Authorized Officer. Any request for a variance shall be submitted to the Authorized Officer on Form 3160-5, Sundry Notices and Report on Wells.

II. PERMIT EXPIRATION

If the permit terminates prior to drilling and drilling cannot be commenced within 60 days after expiration, an operator is required to submit Form 3160-5, Sundry Notices and Reports on Wells, requesting surface reclamation requirements for any surface disturbance. However, if the operator will be able to initiate drilling within 60 days after the expiration of the permit, the operator must have set the conductor pipe in order to allow for an extension of 60 days beyond the expiration date of the APD. (Filing of a Sundry Notice is required for this 60 day extension.)

III. ARCHAEOLOGICAL, PALEONTOLOGY & HISTORICAL SITES

Any cultural and/or paleontological resource discovered by the operator or by any person working on the operator's behalf shall immediately report such findings to the Authorized Officer. The operator is fully accountable for the actions of their contractors and subcontractors. The operator shall suspend all operations in the immediate area of such discovery until written authorization to proceed is issued by the Authorized Officer. An evaluation of the discovery shall be made by the Authorized Officer to determine the appropriate actions that shall be required to prevent the loss of significant cultural or scientific values of the discovery. The operator shall be held responsible for the cost of the proper mitigation measures that the Authorized Officer assesses after consultation with the operator on the evaluation and decisions of the discovery. Any unauthorized collection or disturbance of cultural or paleontological resources may result in a shutdown order by the Authorized Officer.

IV. NOXIOUS WEEDS

The operator shall be held responsible if noxious weeds become established within the areas of operations. Weed control shall be required on the disturbed land where noxious weeds exist, which includes the roads, pads, associated pipeline corridor, and adjacent land affected by the establishment of weeds due to this action. The operator shall consult with the Authorized Officer for acceptable weed control methods, which include following EPA and BLM requirements and policies.

V. SPECIAL REQUIREMENT(S)

Timing Limitation Stipulation / Condition of Approval for lesser prairie-chicken:

Oil and gas activities including 3-D geophysical exploration, and drilling will not be allowed in lesser prairie-chicken habitat during the period from March 1st through June 15th annually. During that period, other activities that produce noise or involve human activity, such as the maintenance of oil and gas facilities, pipeline, road, and well pad construction, will be allowed except between 3:00 am and 9:00 am. The 3:00 am to 9:00 am restriction will not apply to normal, around-the-clock operations, such as venting, flaring, or pumping, which do not require a human presence during this period. Additionally, no new drilling will be allowed within up to 200 meters of leks known at the time of permitting. Normal vehicle use on existing roads will not be restricted. Exhaust noise from pump jack engines must be muffled or otherwise controlled so as not to exceed 75 db measured at 30 feet from the source of the noise.

Ground-level Abandoned Well Marker to avoid raptor perching: Upon the plugging and subsequent abandonment of the well, the well marker will be installed at ground level on a plate containing the pertinent information for the plugged well. For more installation details, contact the Carlsbad Field Office at 575-234-5972.

VI. CONSTRUCTION

A. NOTIFICATION

The BLM shall administer compliance and monitor construction of the access road and well pad. Notify the Carlsbad Field Office at (575) 234-5909 at least 3 working days prior to commencing construction of the access road and/or well pad.

When construction operations are being conducted on this well, the operator shall have the approved APD and Conditions of Approval (COA) on the well site and they shall be made available upon request by the Authorized Officer.

B. TOPSOIL

The operator shall strip the top portion of the soil (root zone) from the entire well pad area and stockpile the topsoil along the edge of the well pad as depicted in the APD. The root zone is typically six (6) inches in depth. All the stockpiled topsoil will be redistributed over the interim reclamation areas. Topsoil shall not be used for berming the pad or facilities. For final reclamation, the topsoil shall be spread over the entire pad area for seeding preparation.

Other subsoil (below six inches) stockpiles must be completely segregated from the topsoil stockpile. Large rocks or subsoil clods (not evident in the surrounding terrain) must be buried within the approved area for interim and final reclamation.

C. CLOSED LOOP SYSTEM

Tanks are required for drilling operations: No Pits.

The operator shall properly dispose of drilling contents at an authorized disposal site.

D. FEDERAL MINERAL MATERIALS PIT

Payment shall be made to the BLM prior to removal of any federal mineral materials. Call the Carlsbad Field Office at (575) 234-5972.

E. WELL PAD SURFACING

Surfacing of the well pad is not required.

If the operator elects to surface the well pad, the surfacing material may be required to be removed at the time of reclamation. The well pad shall be constructed in a manner which creates the smallest possible surface disturbance, consistent with safety and operational needs.

F. EXCLOSURE FENCING (CELLARS & PITS)

Exclosure Fencing

The operator will install and maintain exclosure fencing for all open well cellars to prevent access to public, livestock, and large forms of wildlife before and after drilling operations until the pit is free of fluids and the operator initiates backfilling. (For examples of exclosure fencing design, refer to BLM's Oil and Gas Gold Book, Exclosure Fence Illustrations, Figure 1, Page 18.)

G. ON LEASE ACCESS ROADS**Road Width**

The access road shall have a driving surface that creates the smallest possible surface disturbance and does not exceed fourteen (14) feet in width. The maximum width of surface disturbance, when constructing the access road, shall not exceed twenty-five (25) feet.

Surfacing

Surfacing material is not required on the new access road driving surface. If the operator elects to surface the new access road or pad, the surfacing material may be required to be removed at the time of reclamation.

Where possible, no improvements should be made on the unsurfaced access road other than to remove vegetation as necessary, road irregularities, safety issues, or to fill low areas that may sustain standing water.

The Authorized Officer reserves the right to require surfacing of any portion of the access road at any time deemed necessary. Surfacing may be required in the event the road deteriorates, erodes, road traffic increases, or it is determined to be beneficial for future field development. The surfacing depth and type of material will be determined at the time of notification.

Crowning

Crowning shall be done on the access road driving surface. The road crown shall have a grade of approximately 2% (i.e., a 1" crown on a 14' wide road). The road shall conform to Figure 1; cross section and plans for typical road construction.

Ditching

Ditching shall be required on both sides of the road.

Turnouts

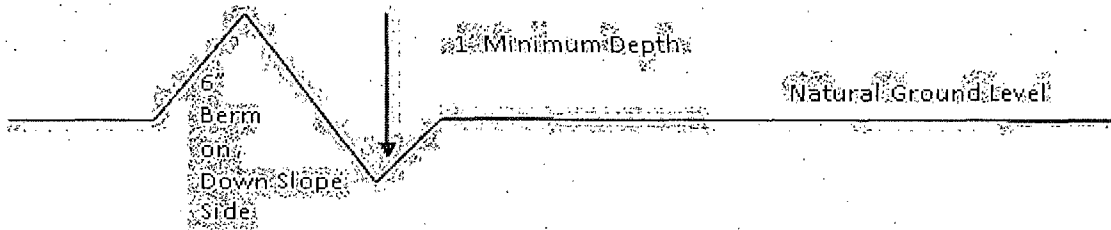
Vehicle turnouts shall be constructed on the road. Turnouts shall be intervisible with interval spacing distance less than 1000 feet. Turnouts shall conform to Figure 1; cross section and plans for typical road construction.

Drainage

Drainage control systems shall be constructed on the entire length of road (e.g. ditches, sidehill outslowing and insloping, lead-off ditches, culvert installation, and low water crossings).

A typical lead-off ditch has a minimum depth of 1 foot below and a berm of 6 inches above natural ground level. The berm shall be on the down-slope side of the lead-off ditch.

Cross Section of a Typical Lead-off Ditch



All lead-off ditches shall be graded to drain water with a 1 percent minimum to 3 percent maximum ditch slope. The spacing interval are variable for lead-off ditches and shall be determined according to the formula for spacing intervals of lead-off ditches, but may be amended depending upon existing soil types and centerline road slope (in %);

Formula for Spacing Interval of Lead-off Ditches

Example - On a 4% road slope that is 400 feet long, the water flow shall drain water into a lead-off ditch. Spacing interval shall be determined by the following formula:

$$400 \text{ foot road with } 4\% \text{ road slope: } \frac{400'}{4\%} + 100' = 200' \text{ lead-off ditch interval}$$

Cattleguards

An appropriately sized cattleguard sufficient to carry out the project shall be installed and maintained at fence/road crossings. Any existing cattleguards on the access road route shall be repaired or replaced if they are damaged or have deteriorated beyond practical use. The operator shall be responsible for the condition of the existing cattleguards that are in place and are utilized during lease operations.

Fence Requirement

Where entry is granted across a fence line, the fence shall be braced and tied off on both sides of the passageway prior to cutting. The operator shall notify the private surface landowner or the grazing allotment holder prior to crossing any fences.

Public Access

Public access on this road shall not be restricted by the operator without specific written approval granted by the Authorized Officer.

Construction Steps

1. Salvage topsoil
2. Construct road

3. Redistribute topsoil
4. Revegetate slopes

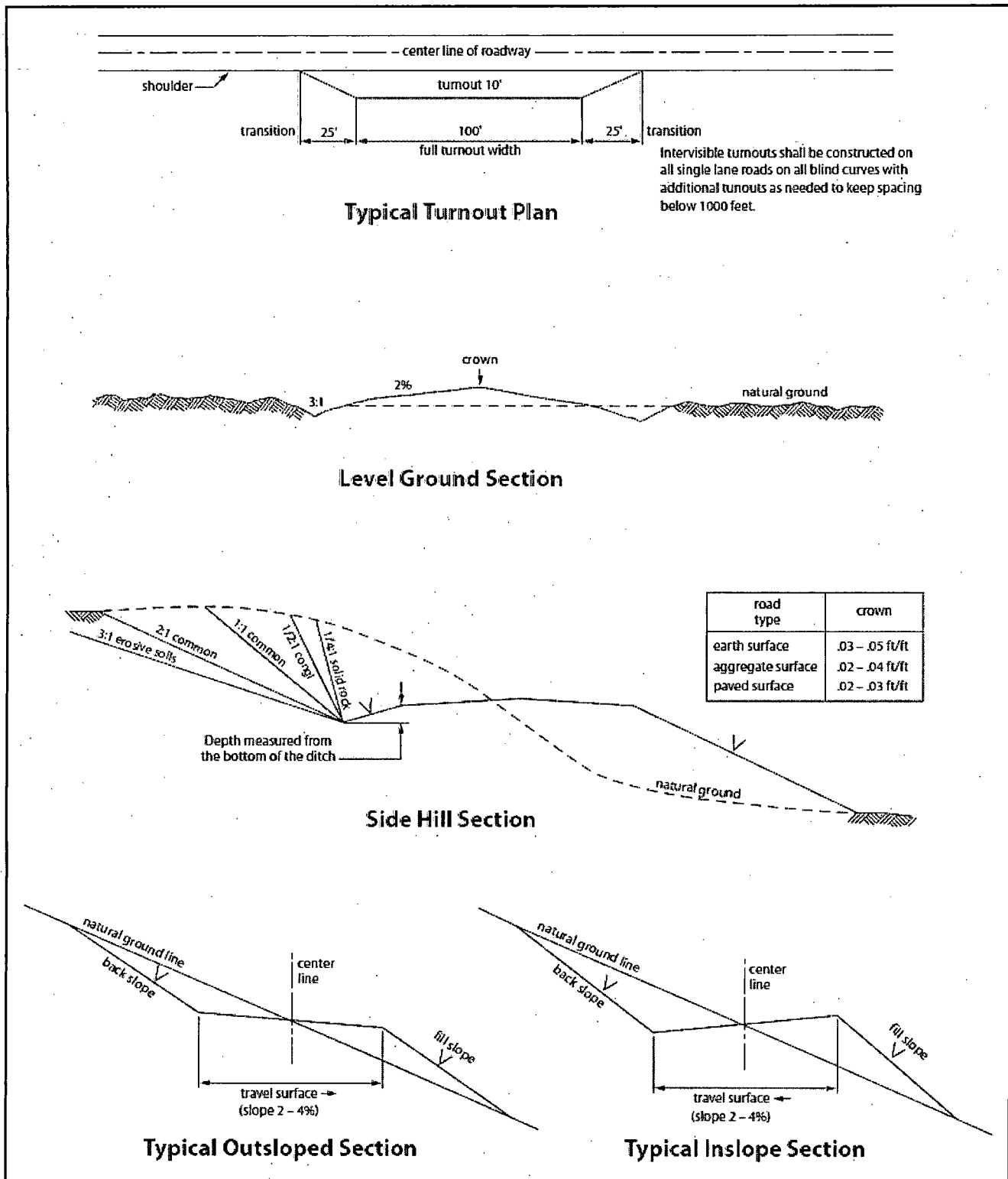


Figure 1. Cross-sections and plans for typical road sections representative of BLM resource or FS local and higher-class roads.

VII. DRILLING

A. DRILLING OPERATIONS REQUIREMENTS

The BLM is to be notified in advance for a representative to witness:

- a. Spudding well (minimum of 24 hours)
- b. Setting and/or Cementing of all casing strings (minimum of 4 hours)
- c. BOPE tests (minimum of 4 hours)

☒ **Eddy County**

Call the Carlsbad Field Office, 620 East Greene St., Carlsbad, NM 88220,
(575) 361-2822

1. **Hydrogen Sulfide (H₂S) monitors shall be installed prior to drilling out the surface shoe. If H₂S is detected in concentrations greater than 100 ppm, the Hydrogen Sulfide area shall meet Onshore Order 6 requirements, which includes equipment and personnel/public protection items. If Hydrogen Sulfide is encountered, provide measured values and formations to the BLM.**
2. Unless the production casing has been run and cemented or the well has been properly plugged, the drilling rig shall not be removed from over the hole without prior approval. **If the drilling rig is removed without approval – an Incident of Non-Compliance will be written and will be a “Major” violation.**
3. Floor controls are required for 3M or Greater systems. These controls will be on the rig floor, unobstructed, readily accessible to the driller and will be operational at all times during drilling and/or completion activities. Rig floor is defined as the area immediately around the rotary table; the area immediately above the substructure on which the draw works is located, this does not include the dog house or stairway area.
4. **The record of the drilling rate along with the GR/N well log run from TD to surface (horizontal well – vertical portion of hole) shall be submitted to the BLM office as well as all other logs run on the borehole 30 days from completion. If available, a digital copy of the logs is to be submitted in addition to the paper copies. The Rustler top and top and bottom of Salt are to be recorded on the Completion Report.**

B. CASING

Changes to the approved APD casing program need prior approval if the items substituted are of lesser grade or different casing size or are Non-API. The Operator can exchange the components of the proposal with that of superior strength (i.e. changing from J-55 to N-80, or from 36# to 40#). Changes to the approved cement program need prior approval if the altered cement plan has less volume or strength or if the changes are substantial (i.e. Multistage tool, ECP, etc.). The initial wellhead installed on the well will remain on the well with spools used as needed.

Centralizers required on surface casing per Onshore Order 2.III.B.1.f.

Wait on cement (WOC) for Potash Areas:

After cementing but before commencing any tests, the casing string shall stand cemented under pressure until both of the following conditions have been met: 1) cement reaches a minimum compressive strength of 500 psi for all cement blends, 2) until cement has been in place at least 24 hours. WOC time will be recorded in the driller's log.

No pea gravel permitted for remedial or fall back remedial without prior authorization from the BLM engineer.

R-111-P Potash

Possible water flows in the Castile, Salado, Delaware, and Bone Spring.

Possible lost circulation in the Rustler, Delaware, and Bone Spring.

1. The 11-3/4 inch surface casing shall be set at approximately 600 feet (a minimum of 25 feet into the Rustler Anhydrite and above the salt) and cemented to the surface. **If salt is encountered, set casing at least 25 feet above the salt.**
 - a. If cement does not circulate to the surface, the appropriate BLM office shall be notified and a temperature survey utilizing an electronic type temperature survey with surface log readout will be used or a cement bond log shall be run to verify the top of the cement. Temperature survey will be run a minimum of six hours after pumping cement and ideally between 8-10 hours after completing the cement job.
 - b. **Wait on cement (WOC) time for a primary cement job is to include the lead cement slurry.**
 - c. Wait on cement (WOC) time for a remedial job will be a minimum of 4 hours after bringing cement to surface or 500 pounds compressive strength, whichever is greater.

- d. If cement falls back, remedial cementing will be done prior to drilling out that string.

Formation below the 11-3/4" shoe to be tested according to Onshore Order

2.III.B.1.i. Test to be done as a mud equivalency test using the mud weight necessary for the pore pressure of the formation below the shoe and the mud weight for the bottom of the hole. Report results to BLM office.

Intermediate casing shall be kept fluid filled while running into hole to meet BLM minimum collapse requirements.

2. The minimum required fill of cement behind the 8-5/8 inch intermediate casing is:

- ☒ Cement to surface. If cement does not circulate see B.1.a, c-d above. **Wait on cement (WOC) time for a primary cement job is to include the lead cement slurry due to potash.**

Formation below the 8-5/8" shoe to be tested according to Onshore Order 2.III.B.1.i. Test to be done as a mud equivalency test using the mud weight necessary for the pore pressure of the formation below the shoe (not the mud weight required to prevent dissolving the salt formation) and the mud weight for the bottom of the hole. Report results to BLM office.

Centralizers required on horizontal leg, must be type for horizontal service and a minimum of one every other joint.

3. The minimum required fill of cement behind the 5-1/2 inch production casing is:

Operator has proposed DV tool at depth of 4450'. Operator is to submit sundry if DV tool depth varies by more than 100' from approved depth.

- a. First stage to DV tool:

- ☒ Cement to circulate. If cement does not circulate, contact the appropriate BLM office before proceeding with second stage cement job. Operator should have plans as to how they will achieve circulation on the next stage.

If operator circulates cement on the first stage, operator is approved to run the DV tool cancellation plug and cancel the second stage of the proposed cement plan. If cement does not circulate, operator will proceed with the second stage.

- b. Second stage above DV tool:

- ☒ Cement to surface. If cement does not circulate, contact the appropriate BLM office. **Excess calculates to 16% - Additional cement may be required.**

4. If hardband drill pipe is rotated inside casing, returns will be monitored for metal. If metal is found in samples, drill pipe will be pulled and rubber protectors which have a larger diameter than the tool joints of the drill pipe will be installed prior to continuing drilling operations.
5. Whenever a casing string is cemented in the R-111-P potash area, the NMOCD requirements shall be followed.

C. PRESSURE CONTROL

1. All blowout preventer (BOP) and related equipment (BOPE) shall comply with well control requirements as described in Onshore Oil and Gas Order No. 2 and API 53.
2. Variance approved to use flex line from BOP to choke manifold. Check condition of flexible line from BOP to choke manifold, replace if exterior is damaged or if line fails test. Line to be as straight as possible with no hard bends and is to be anchored according to Manufacturer's requirements. The flexible hose can be exchanged with a hose of equal size and equal or greater pressure rating. **Anchor requirements, specification sheet and hydrostatic pressure test certification matching the hose in service, to be onsite for review. These documents shall be posted in the company man's trailer and on the rig floor.** If the BLM inspector questions the straightness of the hose, a BLM engineer will be contacted and will review in the field or via picture supplied by inspector to determine if changes are required (operator shall expect delays if this occurs).
3. **Operator has proposed a multi-bowl wellhead assembly. This assembly will only be tested when installed on the surface casing. Minimum working pressure of the blowout preventer (BOP) and related equipment (BOPE) required for drilling below the surface casing shoe shall be 5000 (5M) psi.**
 - a. **Wellhead shall be installed by manufacturer's representatives, submit documentation with subsequent sundry.**
 - b. **If the welding is performed by a third party, the manufacturer's representative shall monitor the temperature to verify that it does not exceed the maximum temperature of the seal.**
 - c. **Manufacturer representative shall install the test plug for the initial BOP test.**
 - d. **Operator shall perform the intermediate casing integrity test to 70% of the casing burst. This will test the multi-bowl seals.**
 - e. **If the cement does not circulate and one inch operations would have been possible with a standard wellhead, the well head shall be cut off, cementing operations performed and another wellhead installed.**

5M system requires an HCR valve, remote kill line and annular to match. The remote kill line is to be installed prior to testing the system and tested to stack pressure.

4. The appropriate BLM office shall be notified a minimum of 4 hours in advance for a representative to witness the tests.
- a. In potash areas, for all casing strings utilizing slips, these are to be set as soon as the crew and rig are ready and any fallback cement remediation has been done. For all casing strings, casing cut-off and BOP installation can be initiated at twelve hours after bumping the plug. However, **no tests** shall commence until the cement has had a minimum of 24 hours setup time.
 - b. The tests shall be done by an independent service company utilizing a test plug **not a cup or J-packer**.
 - c. The test shall be run on a 5000 psi chart for a 2-3M BOP/BOP, on a 10000 psi chart for a 5M BOP/BOPE and on a 15000 psi chart for a 10M BOP/BOPE. If a linear chart is used, it shall be a one hour chart. A circular chart shall have a maximum 2 hour clock. If a twelve hour or twenty-four hour chart is used, tester shall make a notation that it is run with a two hour clock.
 - d. The results of the test shall be reported to the appropriate BLM office.
 - e. All tests are required to be recorded on a calibrated test chart. **A copy of the BOP/BOPE test chart and a copy of independent service company test will be submitted to the appropriate BLM office.**
 - f. The BOP/BOPE test shall include a low pressure test from 250 to 300 psi. The test will be held for a minimum of 10 minutes if test is done with a test plug and 30 minutes without a test plug. This test shall be performed prior to the test at full stack pressure.

D. DRILL STEM TEST

If drill stem tests are performed, Onshore Order 2.III.D shall be followed.

E. WASTE MATERIAL AND FLUIDS

All waste (i.e. drilling fluids, trash, salts, chemicals, sewage, gray water, etc.) created as a result of drilling operations and completion operations shall be safely contained and disposed of properly at a waste disposal facility. No waste material or fluid shall be disposed of on the well location or surrounding area.

Porto-johns and trash containers will be on-location during fracturing operations or any other crew-intensive operations.

JAM 051315

VIII. PRODUCTION (POST DRILLING)

A. WELL STRUCTURES & FACILITIES

Placement of Production Facilities

Production facilities should be placed on the well pad to allow for maximum interim recontouring and revegetation of the well location.

Exclosure Netting (Open-top Tanks)

Immediately following active drilling or completion operations, the operator will take actions necessary to prevent wildlife and livestock access, including avian wildlife, to all open-topped tanks that contain or have the potential to contain salinity sufficient to cause harm to wildlife or livestock, hydrocarbons, or Resource Conservation and Recovery Act of 1976-exempt hazardous substances. At a minimum, the operator will net, screen, or cover open-topped tanks to exclude wildlife and livestock and prevent mortality. If the operator uses netting, the operator will cover and secure the open portion of the tank to prevent wildlife entry. The operator will net, screen, or cover the tanks until the operator removes the tanks from the location or the tanks no longer contain substances that could be harmful to wildlife or livestock. Use a maximum netting mesh size of 1 ½ inches. The netting must not be in contact with fluids and must not have holes or gaps.

Chemical and Fuel Secondary Containment and Exclosure Screening

The operator will prevent all hazardous, poisonous, flammable, and toxic substances from coming into contact with soil and water. At a minimum, the operator will install and maintain an impervious secondary containment system for any tank or barrel containing hazardous, poisonous, flammable, or toxic substances sufficient to contain the contents of the tank or barrel and any drips, leaks, and anticipated precipitation. The operator will dispose of fluids within the containment system that do not meet applicable state or U. S. Environmental Protection Agency livestock water standards in accordance with state law; the operator must not drain the fluids to the soil or ground. The operator will design, construct, and maintain all secondary containment systems to prevent wildlife and livestock exposure to harmful substances. At a minimum, the operator will install effective wildlife and livestock exclosure systems such as fencing, netting, expanded metal mesh, lids, and grate covers. Use a maximum netting mesh size of 1 ½ inches.

Open-Vent Exhaust Stack Exclosures

The operator will construct, modify, equip, and maintain all open-vent exhaust stacks on production equipment to prevent birds and bats from entering, and to discourage perching, roosting, and nesting. (*Recommended exclosure structures on open-vent exhaust stacks are in the shape of a cone.*) Production equipment includes, but may not be limited to, tanks, heater-treaters, separators, dehydrators, flare stacks, in-line units, and compressor mufflers.

Containment Structures

Proposed production facilities such as storage tanks and other vessels will have a secondary containment structure that is constructed to hold the capacity of 1.5 times the

largest tank, plus freeboard to account for precipitation, unless more stringent protective requirements are deemed necessary.

Painting Requirement

All above-ground structures including meter housing that are not subject to safety requirements shall be painted a flat non-reflective paint color, **Shale Green** from the BLM Standard Environmental Color Chart (CC-001: June 2008).

B. PIPELINES

STANDARD STIPULATIONS FOR SURFACE INSTALLED PIPELINES

A copy of the application (Grant, Sundry Notice, APD) and attachments, including stipulations, survey plat and/or map, will be on location during construction. BLM personnel may request to you a copy of your permit during construction to ensure compliance with all stipulations.

Holder agrees to comply with the following stipulations to the satisfaction of the Authorized Officer:

1. The holder shall indemnify the United States against any liability for damage to life or property arising from the occupancy or use of public lands under this grant.
2. The holder shall comply with all applicable Federal laws and regulations existing or hereafter enacted or promulgated. In any event, the holder shall comply with the Toxic Substances Control Act of 1976 as amended, 15 USC 2601 et seq. (1982) with regards to any toxic substances that are used, generated by or stored on the right-of-way or on facilities authorized under this right-of-way grant. (See 40 CFR, Part 702-799 and especially, provisions on polychlorinated biphenyls, 40 CFR 761.1-761.193.) Additionally, any release of toxic substances (leaks, spills, etc.) in excess of the reportable quantity established by 40 CFR, Part 117 shall be reported as required by the Comprehensive Environmental Response, Compensation, and Liability Act, section 102b. A copy of any report required or requested by any Federal agency or State government as a result of a reportable release or spill of any toxic substances shall be furnished to the authorized officer concurrent with the filing of the reports to the involved Federal agency or State government.
3. The holder agrees to indemnify the United States against any liability arising from the release of any hazardous substance or hazardous waste (as these terms are defined in the Comprehensive Environmental Response, Compensation and Liability Act of 1980, 42 U.S.C. 9601, et seq. or the Resource Conservation and Recovery Act, 42 U.S.C. 6901, et seq.) on the Right-of-Way (unless the release or threatened release is wholly unrelated to activity of the Right-of-Way holder's activity on the Right-of-Way), or resulting from the activity of the Right-of-Way holder on the Right-of-Way. This agreement applies without regard to whether a release is caused by the holder, its agent, or unrelated third parties.

4. The holder shall be liable for damage or injury to the United States to the extent provided by 43 CFR Sec. 2883.1-4. The holder shall be held to a standard of strict liability for damage or injury to the United States resulting from pipe rupture, fire, or spills caused or substantially aggravated by any of the following within the right-of-way or permit area:

- a. Activities of the holder including, but not limited to construction, operation, maintenance, and termination of the facility.
- b. Activities of other parties including, but not limited to:
 - (1) Land clearing.
 - (2) Earth-disturbing and earth-moving work.
 - (3) Blasting.
 - (4) Vandalism and sabotage.
- c. Acts of God.

The maximum limitation for such strict liability damages shall not exceed one million dollars (\$1,000,000) for any one event, and any liability in excess of such amount shall be determined by the ordinary rules of negligence of the jurisdiction in which the damage or injury occurred.

This section shall not impose strict liability for damage or injury resulting primarily from an act of war or from the negligent acts or omissions of the United States.

5. If, during any phase of the construction, operation, maintenance, or termination of the pipeline, any oil, salt water, or other pollutant should be discharged from the pipeline system, impacting Federal lands, the control and total removal, disposal, and cleaning up of such oil, salt water, or other pollutant, wherever found, shall be the responsibility of the holder, regardless of fault. Upon failure of the holder to control, dispose of, or clean up such discharge on or affecting Federal lands, or to repair all damages resulting therefrom, on the Federal lands, the Authorized Officer may take such measures as he deems necessary to control and clean up the discharge and restore the area, including, where appropriate, the aquatic environment and fish and wildlife habitats, at the full expense of the holder. Such action by the Authorized Officer shall not relieve the holder of any responsibility as provided herein.

6. All construction and maintenance activity will be confined to the authorized right-of-way width of 20 feet. If the pipeline route follows an existing road or buried pipeline right-of-way, the surface pipeline must be installed no farther than 10 feet from the edge of the road or buried pipeline right-of-way. If existing surface pipelines prevent this distance, the proposed surface pipeline must be installed immediately adjacent to the outer surface pipeline. All construction and maintenance activity will be confined to existing roads or right-of-ways.

7. No blading or clearing of any vegetation will be allowed unless approved in writing by the Authorized Officer.

8. The holder shall install the pipeline on the surface in such a manner that will minimize suspension of the pipeline across low areas in the terrain. In hummocky or dune areas, the pipeline will be "snaked" around hummocks and dunes rather than suspended across these features.

9. The pipeline shall be buried with a minimum of 24 inches under all roads, "two-tracks," and trails. Burial of the pipe will continue for 20 feet on each side of each crossing. The condition of the road, upon completion of construction, shall be returned to at least its former state with no bumps or dips remaining in the road surface.

10. The holder shall minimize disturbance to existing fences and other improvements on public lands. The holder is required to promptly repair improvements to at least their former state. Functional use of these improvements will be maintained at all times. The holder will contact the owner of any improvements prior to disturbing them. When necessary to pass through a fence line, the fence shall be braced on both sides of the passageway prior to cutting of the fence. No permanent gates will be allowed unless approved by the Authorized Officer.

11. In those areas where erosion control structures are required to stabilize soil conditions, the holder will install such structures as are suitable for the specific soil conditions being encountered and which are in accordance with sound resource management practices.

12. Excluding the pipe, all above-ground structures not subject to safety requirement shall be painted by the holder to blend with the natural color of the landscape. The paint used shall be a color which simulates "Standard Environmental Colors" – **Shale Green**, Munsell Soil Color No. 5Y 4/2; designated by the Rocky Mountain Five State Interagency Committee.

13. The pipeline will be identified by signs at the point of origin and completion of the right-of-way and at all road crossings. At a minimum, signs will state the holder's name, BLM serial number, and the product being transported. Signs will be maintained in a legible condition for the life of the pipeline.

14. The holder shall not use the pipeline route as a road for purposes other than routine maintenance as determined necessary by the Authorized Officer in consultation with the holder. The holder will take whatever steps are necessary to ensure that the pipeline route is not used as a roadway.

15. Any cultural and/or paleontological resource (historic or prehistoric site or object) discovered by the holder, or any person working on his behalf, on public or Federal land shall be immediately reported to the authorized officer. Holder shall suspend all operations in the immediate area of such discovery until written authorization to proceed is issued by the authorized officer. An evaluation of the discovery will be made by the authorized officer to determine appropriate cultural or scientific values. The holder will be responsible for the cost of evaluation and any decision as to proper mitigation.

measures will be made by the authorized officer after consulting with the holder.

16. The operator shall be held responsible if noxious weeds become established within the areas of operations. Weed control shall be required on the disturbed land where noxious weeds exist, which includes the roads, powerline corridor, and adjacent land affected by the establishment of weeds due to this action. The operator shall consult with the Authorized Officer for acceptable weed control methods, which include following EPA and BLM requirements and policies.

17. Surface pipelines must be less than or equal to 4 inches and a working pressure below 125 psi.

IX. INTERIM RECLAMATION

During the life of the development, all disturbed areas not needed for active support of production operations should undergo interim reclamation in order to minimize the environmental impacts of development on other resources and uses.

Within six (6) months of well completion, operators should work with BLM surface management specialists (Jim Amos: 575-234-5909) to devise the best strategies to reduce the size of the location. Interim reclamation should allow for remedial well operations, as well as safe and efficient removal of oil and gas.

During reclamation, the removal of caliche is important to increasing the success of revegetating the site. Removed caliche that is free of contaminants may be used for road repairs, fire walls or for building other roads and locations. In order to operate the well or complete workover operations, it may be necessary to drive, park and operate on restored interim vegetation within the previously disturbed area. Disturbing revegetated areas for production or workover operations will be allowed. If there is significant disturbance and loss of vegetation, the area will need to be revegetated. Communicate with the appropriate BLM office for any exceptions/exemptions if needed.

All disturbed areas after they have been satisfactorily prepared need to be reseeded with the seed mixture provided below.

Upon completion of interim reclamation, the operator shall submit a Sundry Notices and Reports on Wells, Subsequent Report of Reclamation (Form 3160-5).

X. FINAL ABANDONMENT & RECLAMATION

At final abandonment, well locations, production facilities, and access roads must undergo "final" reclamation so that the character and productivity of the land are restored.

Earthwork for final reclamation must be completed within six (6) months of well plugging. All pads, pits, facility locations and roads must be reclaimed to a satisfactory

revegetated, safe, and stable condition, unless an agreement is made with the landowner or BLM to keep the road and/or pad intact.

After all disturbed areas have been satisfactorily prepared, these areas need to be revegetated with the seed mixture provided below. Seeding should be accomplished by drilling on the contour whenever practical or by other approved methods. Seeding may need to be repeated until revegetation is successful, as determined by the BLM.

Operators shall contact a BLM surface protection specialist prior to surface abandonment operations for site specific objectives (Jim Amos: 575-234-5909).

Ground-level Abandoned Well Marker to avoid raptor perching: Upon the plugging and subsequent abandonment of the well, the well marker will be installed at ground level on a plate containing the pertinent information for the plugged well.

Seed Mixture for LPC Sand/Shinnery Sites

The holder shall seed all disturbed areas with the seed mixture listed below. The seed mixture shall be planted in the amounts specified in pounds of pure live seed (PLS)* per acre. There shall be no primary or secondary noxious weeds in the seed mixture. Seed will be tested and the viability testing of seed will be done in accordance with State law(s) and within nine (9) months prior to purchase. Commercial seed will be either certified or registered seed. The seed container will be tagged in accordance with State law(s) and available for inspection by the authorized officer.

Seed will be planted using a drill equipped with a depth regulator to ensure proper depth of planting where drilling is possible. The seed mixture will be evenly and uniformly planted over the disturbed area (smaller/heavier seeds have a tendency to drop the bottom of the drill and are planted first). The holder shall take appropriate measures to ensure this does not occur. Where drilling is not possible, seed will be broadcast and the area shall be raked or chained to cover the seed. When broadcasting the seed, the pounds per acre are to be doubled. The seeding will be repeated until a satisfactory stand is established as determined by the authorized officer. Evaluation of growth will not be made before completion of at least one full growing season after seeding.

Species to be planted in pounds of pure live seed* per acre:

<u>Species</u>	<u>lb/acre</u>
Plains Bristlegrass	5lbs/A
Sand Bluestem	5lbs/A
Little Bluestem	3lbs/A
Big Bluestem	6lbs/A
Plains Coreopsis	2lbs/A
Sand Dropseed	1lbs/A

*Pounds of pure live seed:

Pounds of seed x percent purity x percent germination = pounds pure live seed